



Microsoft

Exam Questions 70-740

Installation, Storage, and Compute with Windows Server 2016

NEW QUESTION 1

Note: This question is part of a series of questions that present the same scenario. Each question in the series contains a unique solution that might meet the stated goals. Some question sets might have more than one correct solution, while others might not have a correct solution.

After you answer a question in this section, you will NOT be able to return to it. As a result, these questions will not appear in the review screen.

You have a server named Server1 that runs Windows Server 2016. Server1 has the Hyper-V server role and Docker installed.

You pull the Microsoft/iis Docker image to Server1.

You need to view the available space in the Microsoft/iis Docker image. Solution: You run the command `docker run -d Microsoft/iis`.

You open Disk Management on Server1. Does this meet the goal?

- A. Yes
- B. No

Answer: B

NEW QUESTION 2

You have a Hyper-V server named Server1 that runs Windows Server 2012 R2.

Server1 hosts a virtual machine named VM1 that runs Windows Server 2016. VM1 connects to an external virtual switch named Switch1.

You can ping VM1 from Server1.

You upgrade Server1 to Windows Server 2016.

You need to ensure that you can connect to VM1 by using PowerShell Direct. What should you do?

- A. Configure the firewall rules on Server1.
- B. Enable the Hyper-V extensible switch extensions on Server1.
- C. Upgrade the configuration version of VM1.
- D. Configure the firewall rules on VM1.

Answer: C

NEW QUESTION 3

HOTSPOT

Your network contains an Active Directory forest. The forest contains two domain controllers named DC1 and DC2 that run Windows Server 2016. DC1 holds all of the operations master roles.

DC1 experiences a hardware failure.

You plan to use an automated process that will create 1000 user accounts. You need to ensure that the automated process can complete successfully.

Which command should you run? To answer, select the appropriate options in the answer area.

▼

Move-ADDirectoryServerOperatinMasterRole
ntdsutil

-identity "DC2" -OperationMasterRole

▼

PDCEmulator
InfrastructureMaster
RIDMaster
SchemaMaster

▼

Seize pdc
-Force

- A. Mastered
- B. Not Mastered

Answer: A

Explanation:

▼

Move-ADDirectoryServerOperatinMasterRole
ntdsutil

-identity "DC2" -OperationMasterRole

▼

PDCEmulator
InfrastructureMaster
RIDMaster
SchemaMaster

▼

Seize pdc
-Force

NEW QUESTION 4

You deploy a Hyper-V server named Served in an isolated test environment. The test environment is prevented from accessing the Internet. Server1 runs the Datacenter edition of Windows Server 2016. You plan to deploy the following guest virtual machines on the server.

Quantity	Operating system	Domain member
10	Windows Server 2012 R2	Yes
4	Windows Server 2016	No
5	Windows Server 2016	Yes

Which activation model should you use for the virtual machines'?

- A. Multiple Activation Key (MAK)
- B. Automatic Virtual Machine Activation (AVMA)
- C. Original Equipment Manufacturer (OEM) key
- D. Key Management Service (KMS)

Answer: B

NEW QUESTION 5

HOTSPOT

Your network contains an Active Directory domain named contoso.com. The domain contains a DNS server named Server1.

You enable Response Rate Limiting on Server1.

You need to prevent Response Rate Limiting from applying to hosts that reside on the network of 10.0.0.0/24.

Which cmdlets should you run? To answer, select the appropriate options in the answer area.

First cmdlet to run:

Add-DnsServerClientSubnet
Enable-DnsServerPolicy
Set-DnsServerResponseRateLimiting
Set-DnsServerResponseRateLimitingExceptionlist

Second cmdlet to run:

Add- DnsServerResponseRateLimitingExceptionlist
Add-DnsServerQueryResolutionPolicy
Add-DnsServerZoneScope
Set-DnsServerDsSetting

- A. Mastered
- B. Not Mastered

Answer: A

Explanation:

First cmdlet to run:

Add-DnsServerClientSubnet
Enable-DnsServerPolicy
Set-DnsServerResponseRateLimiting
Set-DnsServerResponseRateLimitingExceptionlist

Second cmdlet to run:

Add- DnsServerResponseRateLimitingExceptionlist
Add-DnsServerQueryResolutionPolicy
Add-DnsServerZoneScope
Set-DnsServerDsSetting

NEW QUESTION 6

You have a server that runs Windows Server 2016.

The server contains a storage pool named Pool1. Pool1 contains five physical disks named Disk1, Disk2, Disk3, Disk4, and Disk5.

A virtual disk named VirtualDisk1 is stored in pool1. VirtualDisk1 uses the parity storage layout. Disk3 fails.

You need to remove Disk3 from Pool1.

Which two commands should you run? Each correct answer presents part of the solution.

- A. Update-StoragePool –FriendlyName Pool1
- B. Set-ResiliencySetting –StoragePool Pool1 –PhysicalDiskRedundancyDefault 4
- C. Reset-PhysicalDisk –FriendlyName Disk3
- D. Set-PhysicalDisk –FriendlyName Disk3 –Usage Retired
- E. Remove-PhysicalDisk –FriendlyName Disk3

Answer: BE

NEW QUESTION 7

Your network contains an Active Directory domain named contoso.com. The domain contains two servers named Server1 and Server2 that have the same hardware configuration

You need to asynchronously replicate volume F: from Server1 to Server2. What should you do?

- A. RunNew-SRPartnershipand specify the -RephcationModeparameter.
- B. install the Failover Clustering feature and create a new cluster resource group.
- C. Install the Failover Clustering feature and use Cluster Shared Volumes (CSV).
- D. RunSet-DfsrServiceConfigurationand specify the -RPCPortparameter

Answer: A

NEW QUESTION 8

HOTSPOT

You have a server named Server1 that runs Windows Server 2016 Server1 has the Windows Application proxy role service installed

You plan to deploy Remote Desktop Gateway (RD Gateway) services. Clients will connect to the RD Gateway services by using various types of devices including Windows, iOS and Android devices.

You need to publish the RD Gateway services through the Web Application Proxy.

Which command should you run? To answer, select the appropriate options in the answer area.

▼

Add-WebApplicationProxyApplication
Set-WebApplicationProxyApplication
Set-WebApplicationProxyConfiguration

-BackendServerURL 'https://rdg.contoso.com/rdg1/'
-ExternalCertificateThumbprint
'1a2b3c4d5e6f1a2b3c4d5e6f1a2b3c4d5e6f1a2b'

-ExternalURL 'https://rdg.contoso.com/rdg1'
-Name 'RDG1'

-ExternalPreAuthentication

▼

ADFS
ADFSforOAuth
ClientCertificate
PassThrough

-ADFSRelyingPartyName 'Default provider'

-BackendServerAuthenticationSPN 'HTTP/RDG1'

- A. Mastered
- B. Not Mastered

Answer: A

Explanation:

▼

Add-WebApplicationProxyApplication
Set-WebApplicationProxyApplication
Set-WebApplicationProxyConfiguration

-BackendServerURL 'https://rdg.contoso.com/rdg1/'
-ExternalCertificateThumbprint
'1a2b3c4d5e6f1a2b3c4d5e6f1a2b3c4d5e6f1a2b'

-ExternalURL 'https://rdg.contoso.com/rdg1'
-Name 'RDG1'

-ExternalPreAuthentication

▼

ADFS
ADFSforOAuth
ClientCertificate
PassThrough

-ADFSRelyingPartyName 'Default provider'

-BackendServerAuthenticationSPN 'HTTP/RDG1'

NEW QUESTION 9
HOTSPOT

You have a server named Served that runs Windows Server 2016. Server1 has the Windows Application Proxy role service installed. You are publishing an application named App1 that will use Integrated Windows authentication as shown in the following graphic.



Use the drop-down menus to select the answer choice that completes each statement based on the information presented in the graphic

Before you can complete the wizard, you must [answer choice]

▼

change the external certificate
configure the Backend server SPN
select Enable HTTP to HTTPS redirection

To ensure that users can access App1 externally, you must
change the External URL to [answer choice.]

▼

https://app1.contoso.com/app1
https://server02.contoso.com/app1
https://server02.contoso.com/publish/app1

- A. Mastered
- B. Not Mastered

Answer: A

Explanation:

Before you can complete the wizard, you must [answer choice]

▼

change the external certificate
configure the Backend server SPN
select Enable HTTP to HTTPS redirection

To ensure that users can access App1 externally, you must
change the External URL to [answer choice.]

▼

https://app1.contoso.com/app1
https://server02.contoso.com/app1
https://server02.contoso.com/publish/app1

NEW QUESTION 10

You need to create highly available storage spaces that connect to directly attached storage on the hosts Which cmdlet should you use?

- A. Enable-ClusterStorageSpacesDiret
- B. Set-StoragePool
- C. Add-ClusterDisk
- D. Update-ClusterVirtualMachineConfiguration

Answer: A

NEW QUESTION 10

You have a failover cluster named Cluster1

A virtual machine named VM1 is a highly available virtual machine that runs on Cluster1 A custom application named App1 runs on VM1.

You need to configure monitoring of VM1. If App1 adds an error entry to the Application event log, VM1 should be automatically rebooted and moved to another cluster node

Which tool should you use?

- A. Hyper-V Manager
- B. Failover Cluster Manager
- C. Server Manager
- D. Resource Monitor

Answer: B

NEW QUESTION 11

You are configuring a Windows Server 2016 failover cluster in a workgroup.

Before installing one of the nodes, you run the ipconfig /all command and receive the following output

```
Windows IP Configuration

Host Name . . . . . : Server1
Primary Dns Suffix . . . . . :
Node Type . . . . . : Hybrid
IP Routing Enabled. . . . . : No
WINS Proxy Enabled. . . . . : No
DNS Suffix Search List. . . . . :

Ethernet adapter Ethernet:

Connection-specific DNS Suffix . :
Description . . . . . : Microsoft Hyper-V Network Adapter
Physical Address. . . . . : 00-15-5D-01-62-17
DHCP Enabled. . . . . : Yes
Autoconfiguration Enabled . . . . : Yes
Link-local IPv6 Address . . . . . : fe80::7548:46d8:8ffc:d5ab%17(Preferred)
IPv4 Address. . . . . : 192.168.1.154(Preferred)
Subnet Mask . . . . . : 255.255.255.0
Default Gateway . . . . . : 192.168.1.10
DHCPv6 IAID . . . . . : 369099429
DHCPv6 Client DUID. . . . . : 00-01-00-01-1A-1D-5D-60-00-02-A5-4E-F4-85
DNS Servers . . . . . : 192.168.1.32
NetBIOS over Tcpip. . . . . : Disabled
```

You need to ensure that Server 1 can be added as a node in the cluster What should you do?

- A. Assign a static IP address
- B. Change the Node Type to Broadcast
- C. Configure a DNS suffix
- D. Enable NetBIOS over TCP/IP

Answer: C

NEW QUESTION 12

You have an application named App1 App1 is distributed to multiple Hyper-V virtual machines in a multitenant environment You need to ensure that the traffic is distributed evenly among the virtual machines that host App1 What should you include in the environment?

- A. Network Controller and Windows Server Network Load Balancing (NLB) nodes
- B. Network Controller and Windows Server Software Load Balancing (SLB) nodes
- C. an RAS Gateway and Windows Server Network Load Balancing (NLB) nodes
- D. an RAS Gateway and Windows Server Software Load Balancing (SLB) nodes

Answer: D

NEW QUESTION 13

HOTSPOT

You have an Active Directory domain named Contoso.com. The domain contains Hyper-V hosts named Server1 and Server2 that run Windows Server 2016. The Hyper-V hosts are configured to use NVGRE for network virtualization.

You have four virtual machines that are connected to an external switch. The virtual machines are configured as shown.

To which virtual machine or virtual machines can VM1 and VM3 connect? To answer, select the appropriate options in the answer area.

Virtual Machine Name	Hyper-V host	IP address	Netmask	GRE key
VM 1	Server1	192.168.1.16	255.255.255.0	16
VM 2	Server1	192.168.1.232	255.255.255.0	32
VM 3	Server2	192.168.1.32	255.255.255.0	32
VM 4	Server2	192.168.1.25	255.255.255.0	25
VM 5	Server2	192.168.1.116	255.255.255.0	16
VM 6	Server2	192.168.1.132	255.255.255.0	32

VM1 can connect to:

☐ VM2 only
☐ VM5 only
☐ VM2, VM3, VM5 and VM6 only
☐ VM2, VM3, VM4, VM5, and VM6

VM3 can connect to:

☐ VM6 only
☐ VM2, and VM6 only
☐ VM4, VM5 and VM6 only
☐ VM1, VM2, VM5, and VM6 only
☐ VM1, VM2, VM4, VM5, and VM6

- A. Mastered
B. Not Mastered

Answer: A

Explanation:

VM1 can connect to:

☐ VM2 only
☒ VM5 only
☐ VM2, VM3, VM5 and VM6 only
☐ VM2, VM3, VM4, VM5, and VM6

VM3 can connect to:

☐ VM6 only
☒ VM2, and VM6 only
☐ VM4, VM5 and VM6 only
☐ VM1, VM2, VM5, and VM6

NEW QUESTION 15

You have a server named Server1 that runs Windows Server 2016. You need to configure Server1 as a multitenant RAS Gateway. What should you install on Server1?

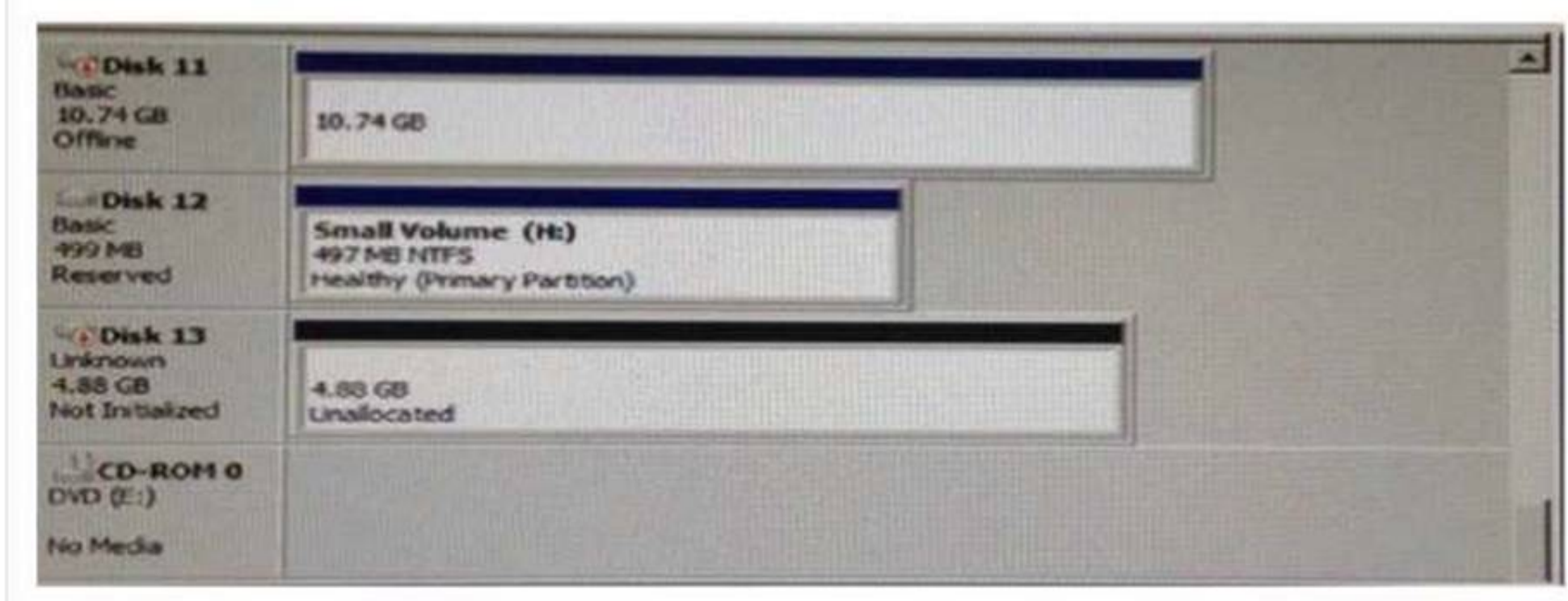
- A. the Network Policy and Access Services server role
B. the Remote Access server role
C. the Data Center Bridging feature
D. the Network Controller server role

Answer: B

NEW QUESTION 17

HOTSPOT

You have a server named Server1 that runs Windows Server 2016 and has the Hyper-V server role installed. You open Disk Management on Server1 as shown in the following graphic.



You plan to configure Disk13 as a pass-through disk for a generation 1 virtual machine.

Use the drop-down menus to select the answer choice that completes each statement based on the information presented in the graphic.

The status of Disk 13 must be set to [answer choice.]

▼

Initializing
Offline
Online

If the virtual machine uses Disk 13 as the system partition, Disk 13 must be attached to [answer choice] in Hyper-V Manager.

▼

a Fibre Channel adapter
an IDE controller
a SCSI controller

- A. Mastered
- B. Not Mastered

Answer: A

Explanation:

The status of Disk 13 must be set to [answer choice.]

▼

Initializing
Offline
Online

If the virtual machine uses Disk 13 as the system partition, Disk 13 must be attached to [answer choice] in Hyper-V Manager.

▼

a Fibre Channel adapter
an IDE controller
a SCSI controller

NEW QUESTION 21

DRAG DROP

Your network contains an Active Directory domain named contoso.com. The domain contains two servers named Server1 and Server2 that run Windows Server.

2016.

Server1 has IP Address Management (IPAM) installed Server2 has Microsoft System Center 2016 Virtual Machine Manager (VMM) installed.

You need to integrate IPAM and VMM

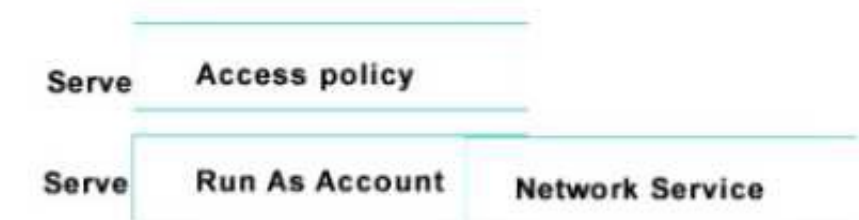
Which types of objects should you create on each server? To answer, drag the appropriate object types to the correct servers Each object type may be used once, more than once, or not at all You may need to drag the split bar between panes or scroll to view content



- A. Mastered
- B. Not Mastered

Answer: A

Explanation:



NEW QUESTION 23

Note: This question is part of a series of questions that use the same similar answer choices An answer choice may be correct for more than one question in the series Each question is independent of the other questions in this series. Information and details provided in a question apply only to that question
 You have a two-node Hyper-V cluster named Cluster1 at a primary location and a stand-alone Hyper- V host named Server1 at a secondary location
 A virtual machine named VM1 runs on Cluster1 You configure a Hyper-V Replica of VM1 to Server1 You need to perform a Test Fai lover of VM1. Which tool should you use?

- A. the clussvc.exe command
- B. the cluster.exe command
- C. the Computer Management console
- D. the configurehyperv.exe command
- E. the Disk Management console
- F. the Failover Cluster Manager console
- G. the Hyper-V Manager console
- H. the Server Manager Desktop app

Answer: G

NEW QUESTION 28

Note: This question is part of a series of questions that use the same similar answer choices. An answer choice may be correct for more than one question in the series. Each question is independent of the other questions in this series. Information and details provided in a question apply only to that question.
 You have an Active Directory domain that contains two Hyper-V servers named Server1 and Server2. Server1 has Windows Server 2016 installed. Server2 has Windows Server 2012 R2 installed.
 Each Hyper-V server has three network cards. Each network card is connected to a different subnet. Server1 contains a dedicated migration network.
 Server2 contains a virtual machine named VM5.
 You plan to perform a live migration of VM5 to Server1.
 You need to ensure that Server1 uses all available networks to perform the live migration of VM5. What should you run1?

- A. the Mount-VHD cmdlet
- B. the Diskpart command
- C. the Set-VHD cmdlet
- D. the Set-VM cmdlet
- E. the Set-VMHost cmdlet
- F. the Set-VMProcessor cmdlet
- G. the Install-WindowsFeature cmdlet
- H. the Optimize-VHD cmdlet

Answer: E

NEW QUESTION 33

In this section, you'll see one or more sets of questions with the same scenario and problem Each

question presents a unique solution to the problem, and you must determine whether the solution meets the stated goals. Any of the solutions might solve the problem. It is also possible that none of the solutions solve the problem.

Once you answer a question in this section, you will NOT be able to return to it. As a result, these questions will not appear in the review screen

Note: This question is part of a series of questions that present the same scenario. Each question in the series contains a unique solution. Determine whether the solution meets the stated goals.

Your network contains an Active Directory domain named contoso.com. The domain contains a DNS server named Server1. All client computers run Windows 10. On Server1, you have the following zone configuration

ZoneName	ZoneType	IsAutoCreated	IsDsIntegrated	IsReverseLookupZone	IsSign
-----	-----	-----	-----	-----	-----
_msdcs.contoso.com	Primary	False	True	False	False
adatum.com	Forwarder	False	False	False	
contoso.com	Primary	False	True	False	False
fabrikam.com	Primary	False	False	False	True
TrustAnchors	Primary	False	True	False	False

You have the following subnets defined on Server1.

Name	IPv4Subnet	IPv6Subnet
-----	-----	-----
Subnet1	{10.0.0.0/24}	
Subnet2	{10.0.1.0/24}	
Subnet3	{192.168.15.0/24}	
Subnet4	{172.16.1.0/24}	

You need to prevent Server1 from resolving queries from DNS clients located on Subnet4 Server1

must resolve queries from all other DNS clients

Solution From Windows PowerShell on Setver1, you run the Add-DnsServerTrustAnchor cmdtel Does this meet the goal?

- A. Yes
- B. No

Answer: A

NEW QUESTION 34

Note: This question is part of a series of questions that present the same scenario. Each question in the series contains a unique solution that might meet the stated goals. Some question sets might

have more than one correct solution, while others might not have a correct solution.

After you answer a question in this section, you will NOT be able to return to it. As a result, these questions will not appear in the review screen.

You are a server administrator at a company named Contoso, Ltd.

Contoso has a Windows Server 2016 Hyper-V environment configured as shown in the following table.

Hyper-V host name	Configuration	Virtual switch name
Host1	- Uses an Intel processor - Is a member of a SAN named SAN1	Switch1
Host2	- Uses an AMD processor - Has local storage only	Switch2
Host3	- Uses an Intel processor - Is a member of a SAN named SAN1	Switch1
Host4	- Uses an Intel processor - Has local storage only	Switch2

All of the virtual switches are of the external type.

You need to ensure that you can move virtual machines between the hosts without causing the virtual machines to disconnect from the network.

Solution: You implement live migration by using Host3 and Host4. Does this meet the goal?

- A. Yes
- B. No

Answer: A

NEW QUESTION 36

Note: This question is part of a series of questions that present the same scenario. Each question in

the series contains a unique solution that might meet the stated goals. Some question sets might have more than one correct solution, white others might not have a correct solution.

You have a server named Server1 that runs Windows Server 2016. Server1 hosts a line-of-business application named App1. App1 has a memory leak that occasionally causes the application to consume an excessive amount of memory.

You need to log an event in the Application event log whenever App1 consume more than 4 GB of memory.
Solution: You create a system configuration information data collector. Does this meet the goal?

- A. Yes
- B. No

Answer: B

NEW QUESTION 41

HOTSPOT

You implement a Windows Server 2016 failover cluster named Cluster1 as a highly available file server.
You run the Get-Cluster cmdlet and receive the following output.

```
AddEvictDelay : 60
AdministrativeAccessPoint : Dns
AutoAssignNodeSite : 0
AutoBalancerMode : 2
AutoBalancerLevel : 1
ClusSvcHangTimeout : 135
ClusSvcRegroupStageTimeout : 5
ClusSvcRegroupTickInMilliseconds : 300
ClusterEnforcedAntiAffinity : 0
ClusterFunctionalLevel : 9
ClusterUpgradeVersion : 7
ClusterGroupWaitDelay : 120
ClusterLogLevel : 3
ClusterLogSize : 300
DatabaseReadWriteMode : 0
DefaultNetworkRole : 3
Description :
Domain : contoso.com
EnableSharedVolumes : Enabled
FixQuorum : 0
Id : ec6121be-f816-426b-b550-72cafb943f1b
Name : cluster1
```

Use the drop-down menus to select the answer choice that completes each statement based on the information presented in the graphic.

Answer Area

You can perform Cluster-Aware Updating (CAU) in [answer choice].

self-updating mode only
remote-updating mode only
remote-updating mode and self-updating mode

You can use [answer choice] to create a file share in Cluster1.

DFS Management
Failover Cluster Manager
File Server Resource Manager
Server Manager

- A. Mastered
- B. Not Mastered

Answer: A

Explanation:

Answer Area

You can perform Cluster-Aware Updating (CAU) in **[answer choice]**.

▼

self-updating mode only

remote-updating mode only

remote-updating mode and self-updating mode

You can use **[answer choice]** to create a file share in Cluster1.

▼

DFS Management

Failover Cluster Manager

File Server Resource Manager

Server Manager

NEW QUESTION 45

You have a Windows Server 2016 Hyper-V failover cluster that contains two nodes named Node1 and Node2. On Node1, you create a virtual machine named VM01 by using Hyper-V Manager. You need to configure VM01 to move to Node2 automatically if Node1 becomes unavailable. What should you do?

- A. From Failover Cluster manager, run the configure Role actions.
- B. From Hyper-V Manager, click VM01 and click Enable Replication.
- C. From Hyper-V Manager Click Node 1 and the modify the hyper-V settings.
- D. From Windows Powershell, run the Enable-VMReplication cmdlet.

Answer: A

Explanation:

<http://windowsitpro.com/hyper-v/make-vm-highly-available-windows-server-2012>

NEW QUESTION 49

DRAG DROP

Note: This question is part of a series of questions that use the same scenario. For your convenience, the scenario is repeated in each question. Each question presents a different goal and answer choices, but the text of the scenario is exactly the same in each question in this series. Your network contains an Active Directory domain named contoso.com. The functional level of the forest and the domain is Windows Server 2008 R2. All servers in the domain run Windows Server 2016 Standard. The domain contains 300 client computers that run either Windows 8.1 or Windows 10. The domain contains nine servers that are configured as shown in the following table.

Name	Configuration	Planned changes
Server1	Domain controller	None
Server2	File server	Run Failover Clustering and Storage Spaces Direct
Server3	File server	Run Failover Clustering and Storage Spaces Direct
Server4	Hyper-V host	Run shielded virtual machines
Server5	Hyper-V host	None
Server6	Member server	Run Active Directory Federation Services (AD FS)
VM1	Virtual machine hosted on Server5	None
VM2	Virtual machine hosted on Server5	None
VM3	Virtual machine hosted on Server5	None

The virtual machines are configured as follows:

- Each virtual machine has one virtual network adapter.
- VM1 and VM2 are part of a Network Load Balancing (NLB) cluster.
- All of the servers on the network can communicate with all of the virtual machines.

You need to install the correct edition of Windows Server 2016 to support the planned changes for Server2, Server3, Server4, and Server5.

Which edition or editions should you choose for each server? To answer, drag the appropriate editions to the correct servers. Each edition may be used once, more than once, or not at all. You may need to drag the split bar between panes or scroll to view content.

Editions

Standard only

Standard or Datacenter

Datacenter only

Server2:

Edition

Server3:

Edition

Server4:

Edition

Server6:

Edition

A. Mastered

B. Not Mastered

Answer: A

Explanation:

Editions

Standard only

Standard or Datacenter

Datacenter only

Server2:

Datacenter only

Server3:

Datacenter only

Server4:

Datacenter only

Server6:

Standard or Datacenter

NEW QUESTION 50

Note This question is part of a series of questions that use the same scenario. For your convenience, the scenario is repeated in each question. Each question presents a different goal and answer choices, but the text of the scenario is exactly the same in each question in this series.

Start of Repeated Scenario:

A company named Contoso, Ltd. has several servers that run Windows Server 2016 Contoso has a Hyper V environment that uses failover clustering and Windows Server Update Services (WSUS). The environment contains several Windows containers and several virtual machines. The WSUS deployment contains one upstream server that is located on the company's perimeter network and several downstream servers located on the internal network, A firewall separates the upstream server from the downstream servers.

You plan to deploy a human resources application to a new server named HRServer5. HRServer5 contains a FAT32-formatted data volume.

The CIO of Contoso identifies the following requirements for the company's IT department:

- Deploy failover cluster to two new virtual machines.
- Store all application databases by using Encrypted File System (EFS).
- Ensure that each Windows container has a dedicated IP address assigned by a DHCP server
- Produce a report that lists the processor time used by all of the processes on a server named Server 1 for five hour.

Encrypt all communication between the internal network and the perimeter network, including all WSUS communications.

- Automatically load balance the virtual machines hosted in the Hyper-V cluster when processor utilization exceeds 70 percent.

End of Repeated Scenario.

You need to modify the Hyper V cluster to meet the load balancing requirement for the virtual machine. Which command should you run?

- A. (Get-ClusterParameter) AutoBalanecrMode=2
- B. (Get-Cluster).AutoBalanecrMode=2
- C. (Get-ClusterParameter).AutoBalancerLevel=2
- D. (Get-Cluster).AutoBalancerLevel=2

Answer: D

NEW QUESTION 52

You have a server named Server1 that runs Windows Server 2016. You need to install the DNS Server role on Server1. What should you run?

A. the dns.exe command

B. the optionalfcaturcs.exe command

C. the Install-Package cmdlet

D. the Enable-WindowsOptionalFeature cmdlet

Answer: D

NEW QUESTION 54

You have a server named Server 1 that runs Windows Server 2016 and has the Hyper-V server role installed. On Server1, you plan to create a virtual machine named VM1. You need to ensure that you can start VM1 from the network. What are two possible ways to achieve the goal? Each correct answer presents a complete solution.

- A. Create a generation 2 virtual machine.
- B. Create a generation 1 virtual machine and run the `Enable-NetAdapterPackageDirectcmdlet`.
- C. Create a generation 1 virtual machine that has a legacy network adapter.
- D. Create a generation 1 virtual machine and configure a single root I/O virtualization (SRV-IO) interface for the network adapter.

Answer: AC

NEW QUESTION 57

You have a Hyper-V host that runs Windows Server 2016. The host contains a virtual machine named VM1. VM1 has resource metering enabled. You need to use resource metering to track the amount of network traffic that VM1 sends to the 10.0.0.0/8 network. Which cmdlet should you run?

- A. `Add-VMNetworkAdapteiAd`
- B. `Set-VMNetworkAdapter`
- C. `New-VMResourcePool`
- D. `Set-VMNetworkAdapterRoutingDomamMapping`

Answer: A

NEW QUESTION 58

After you answer a question in this section, you will NOT be able to return to it. As a result, these questions will not appear in the review screen.

You have a server named Server1 that runs Windows Server 2016.

You plan to use Windows Server Backup to back up all of the data on Server1. You create a new volume on Server1.

You need to ensure that the new volume can be used as a backup target. The backup target must support incremental backups.

Solution: You mount the volume to C:\Backup, and you format the volume by using FAT32. Does this meet the goal?

- A. Yes
- B. No

Answer: A

NEW QUESTION 60

Your network contains an Active Directory domain. The domain contains a new file server named Server1 that runs a Server Core installation of Windows Server 2016.

Server1 has an ReFS-formatted volume D: and NTFS-formatted volume E: The volumes do not contain any data.

You install the Data Deduplication role service on Server1.

You need to implement Data Deduplication for volumes on D: and E:.

Solution: From Windows PowerShell, you run `Format-Volume E: -FileSystem ReFS` and `Enable- DeDupVolume -Volume D:,E:.`

Does this meet the goal?

- A. Yes
- B. No

Answer: A

Explanation:

References: <https://docs.microsoft.com/en-us/windows-server/storage/data- deduplication/understand>

NEW QUESTION 61

Your network contains an Active Directory domain. The domain contains a new file server named Server1 that runs a Server Core installation of Windows Server 2016.

Server1 has an ReFS-formatted volume D: and NTFS-formatted volume E: The volumes do not contain any data.

You install the Data Deduplication role service on Server1.

You need to implement Data Deduplication for volumes on D: and E:.

Solution: From Windows PowerShell, you run `Format-Volume D: -FileSystem EXFat` and `Enable- DeDupVolume -Volume D:,E:.`

Does this meet the goal?

- A. Yes
- B. No

Answer: A

NEW QUESTION 66

DRAG DROP

You are preparing an image of Windows Server 2016.

The image is missing the driver foe a network adapter that is required in your environment. You need to ensure that the image contains the network adapter driver.

Which three cmdlets should you use in sequence? To answer, move the appropriate cmdlets from the list of cmdlets to the answer area and arrange them m the correct order.

Cmdlets

- Mount-WindowsImage
- Add-WindowsDriver
- Get-WindowsImage
- Save-WindowsImage
- Add-WindowsFeature
- Dismount-WindowsImage
- Optimize-WindowsImage

Answer Area

- 1
- 2
- 3

- A. Mastered
B. Not Mastered

Answer: A

Explanation:

Cmdlets

- Mount-WindowsImage
- Get-WindowsImage
- Save-WindowsImage
- Add-WindowsFeature

Answer Area

- 1

Add-WindowsDriver
- 2

Optimize-WindowsImage
- 3

Dismount-WindowsImage

NEW QUESTION 68

You have Nano Setver image named Disk1 .vhdx. You mount Disk1 .vhdx.
You need to add a folder that contains several files to the image. Which tool or cmdlet you should use?

- A. Copy-Item
B. Add-WindowsImage
C. Add-WindowsPackage
D. Edit-NanoServerImage

Answer: A

NEW QUESTION 70

HOTSPOT

You have a Hyper-V host named Server1 that runs Windows Server 2016.

You deploy a virtual machine named VM1 to Server1. VM1 runs Windows Server 2016. You need to ensure that you can install the Hyper-V server role on VM1.

Which command should you run? To answer, select the appropriate options in the answer area.

Answer Area

Enable-VMIntegrationService
Set-VM
Set-VMBios
Set-VMFirmware
Set-VMHost
Set-VMProcessor

SERVER1 - EnableEnhancedSessionMode \$true
SERVER1 - EnableSecureBoot on
SERVER1 - ExposeVirtualizationExtensions \$true
VM1 - EnableEnhancedSessionMode \$true
VM1 - EnableSecureBoot on
VM1 - ExposeVirtualizationExtensions \$true

- A. Mastered
- B. Not Mastered

Answer: A

Explanation:

References:

<https://docs.microsoft.com/en-us/virtualization/hyper-v-on-windows/user-guide/nested-virtualization>

NEW QUESTION 75

Note: This question is part of a series of questions that use the same or similar answer choices. An answer choice may be correct for more than one question in the series. Each question is independent of the other questions in this series. Information and details provided in a question apply only to that question.

You have two servers named Server1 and Server2 that run Windows Server 2016. Server1 and Server2 have the Hyper-V server role installed and are nodes in a failover cluster.

On Server1, an administrator creates a virtual machine named VM1. You need to configure VM1 for high availability.

Which tool should you use?

- A. the clussvc.exe command
- B. the cluster.exe command
- C. the Computer Management snap-in
- D. the configurehyperv.exe command
- E. the Disk Management snap-in
- F. the Failover Cluster Manager snap-in
- G. the Hyper-V Manager snap-in
- H. the Server Manager app

Answer: F

Explanation:

References:

<http://windowsitpro.com/hyper-v/make-vm-highly-available-windows-server-2012>

NEW QUESTION 77

You create a Nano server image named Nano1.vhdx by using the New-NanoServerImage cmdlet. You attach Nano1.vhdx to a Generation 1 virtual machine named Nano1.

When you start Nano1, you get the following error message: "Boot failure. Reboot and select proper Boot device or Insert Boot Media in selected Boot device"

You need to successfully start Nano server. What should you do?

- A. Attach Nano1.vhdx to a SCSIcontroller.
- B. Recreate Nano1 as a Generation 2 virtual machine.
- C. Increase the memory of Nano1 to 512 Mb.
- D. Modify the BIOS settings of Nano1.

Answer: B

Explanation:

A Generation 1 VM cannot boot from a vhdx disk; only a Generation 2 VM can boot from an vhdx disk.

NEW QUESTION 78

HOTSPOT

Your company has a main office and a branch office. The two offices connect to each other by using a WAN link.

Your network contains an Active Directory forest named contoso.com. The forest contains a domain controller named DC1. All of the domain controllers are

located in the main office.

You install a read-only domain controller (RODC) named RODC1 in the branch office.

You create a user account for a new user named User1. You add User1 to the Allowed RODC Password Replication Group. User1 starts work on Monday.

You are notified that the WAN link will be down for maintenance on Monday. You need to ensure that User1 can log on in the branch office site on Monday.

Which command should you run? To answer, select the appropriate options in the answer area.

Answer Area

▼	▼
clonepr	/prp
ldifde	/replicate
repadmin	/rodcpwdrepl
replmon	/syncall

rodcl.fabrikam.com dcl.fabrikam.com "cn=user1,ou=users,dc=fabrikam,DC=com"

- A. Mastered
- B. Not Mastered

Answer: A

Explanation:

References:

[https://technet.microsoft.com/en-us/library/cc742095\(v=ws.11\).aspx](https://technet.microsoft.com/en-us/library/cc742095(v=ws.11).aspx)

NEW QUESTION 81

HOTSPOT

Your network contains an Active Directory forest named contoso.com. You need to add a new domain named fabrikam.com to the forest.

What command should you run? To answer, select the appropriate options in the answer area.

Answer Area

▼	-DomainType	▼
Install-ADDSDomain		TreeDomain
Install-ADDSDomainController		ChildDomain
Install-ADDSTForest		

-InstallDns:\$true -NewDomainName fabrikam.com -ParentDomainName contoso.com

- A. Mastered
- B. Not Mastered

Answer: A

Explanation:

Answer Area

▼	-DomainType	▼
Install-ADDSDomain		TreeDomain
Install-ADDSDomainController		ChildDomain
Install-ADDSTForest		

-InstallDns:\$true -NewDomainName fabrikam.com -ParentDomainName contoso.com

Explanation:

References:

[https://technet.microsoft.com/en-us/library/hh974722\(v=wps.630\).aspx](https://technet.microsoft.com/en-us/library/hh974722(v=wps.630).aspx)

NEW QUESTION 83

Note: This question is part of a series of questions that present the same scenario. Each question in the series contains a unique solution that might meet the stated goals. Some question sets might have more than one correct solution, while others might not have a correct solution.
After your answer a question in this section, you will NOT be able to return to it. As a result, these questions will not appear in the review screen.
Your network contains an Active Directory forest named contoso.com. You need to identify which server is the schema master.
Solution: From Windows PowerShell, you run Get-ADDomainController -Discover -Service 2. Does this meet the goal?

- A. Yes
- B. No

Answer: B

Explanation:

References:

<https://blogs.technet.microsoft.com/mempson/2007/11/08/how-to-find-out-who-has-your-fsmo-roles/>

NEW QUESTION 86

Note: This question is part of a series of questions that present the same scenario. Each question in the series contains a unique solution that might meet the stated goals. Some question sets might have more than one correct solution, while others might not have a correct solution.
After your answer a question in this section, you will NOT be able to return to it. As a result, these questions will not appear in the review screen.
Your network contains an Active Directory forest named contoso.com. You need to identify which server is the schema master.
Solution: From a command prompt, you run netdom query fsmo. Does this meet the goal?

- A. Yes
- B. No

Answer: A

Explanation:

References: <https://blogs.technet.microsoft.com/mempson/2007/11/08/how-to-find-out-who-has-your-fsmo-roles/>

NEW QUESTION 87

Your Network contains one Active Directory domain named contoso.com. You pilot DirectAccess on the network.
During the pilot deployment, you enable DirectAccess only for a group Contoso\Test Computers. Once the pilot is complete, you need to enable DirectAccess for all the client computers in the domain.
What should you do?

- A. From Windows PowerShell, run the Set-DAClient cmdlet.
- B. From Windows PowerShell, run the Set-DirectAccess cmdlet.
- C. From Active Directory Users and Computers, modify the membership of the Windows Authorization Access Group.
- D. From Group Policy Management, modify the security filtering of an object named Direct Access Client Setting Group Policy.

Answer: D

NEW QUESTION 91

A company named Contoso, Ltd has five Hyper-V hosts that are configured as shown In the following table.

Hyper-V host name	Configuration
Server1	Windows Sever 2012 R2 and an Intel Xeon E7 processor
Server2	Windows Sever 2012 R2 and an Intel i7 processor
Server3	Windows Sever 2016 and an Intel i7 processor
Server4	Windows Sever 2016 and an AMD Opteron processor
Server5	Windows Sever 2012 R2 and an Intel Xeon E7 processor

What are two valid live migration scenarios for virtual machines in your environment? Each correct answer presents a complete solution.

- A. from Server4 to Server5
- B. from Server1 to Server5
- C. from Server3 to Server4
- D. from Server2 to Server3

Answer: BD

NEW QUESTION 92

You have a Hyper-V host named Server1 that runs Windows Server 2016. Server1 hosts a virtual machine named VM1. VM1 is in a workgroup. VM1 is currently in a running state.
You need to create 10 copies of VM1 on Server1 in the least amount of time possible. Which cmdlets should you use?

- A. Stop-VM, and then Import-VM
- B. Export-VM, and then Import-VM
- C. Checkpoint-VM, and then New-VM
- D. Copy-VMFile, and then New-VM

Answer: B

NEW QUESTION 95

You have a server named Server1 that runs Windows Server 2016. Server1 has four SCSI disks and a storage pool named Pool1 that contains three disks. You create a virtual disk named Disk 1 that uses a mirrored layout. You create a partition named Partition1 that uses all of the available space on Disk 1. You need to extend Partition1. What should you do first?

- A. From Windows PowerShell, run the Resize-VirtualDisk cmdlet.
- B. From Windows PowerShell, run the Resize-StorageTier cmdlet.
- C. From Windows PowerShell, run the Expand-IscsiVirtualDisk cmdlet.
- D. From Disk Management, modify the properties of Partition1.

Answer: A

NEW QUESTION 98

Note: This question is part of a series of questions that use the same scenario. For your convenience, the scenario is repeated in each question. Each question presents a different goal and answer choices, but the text of the scenario is exactly the same in each question in this series.

Start of repeated scenario

Your network contains an Active Directory domain named contoso.com. The functional level of the forest and the domain is Windows Server 2008 R2. All servers in the domain run Windows Server 2016 Standard. The domain contains 300 client computers that run either Windows 8.1 or Windows 10.

The domain contains nine servers that are configured as shown in the following table.

Server name	Configuration	Planned changes
Server1	Domain controller	None
Server2	File server	Run Failover Clustering and Storage Spaces Direct
Server3	File server	Run Failover Clustering and Storage Spaces Direct
Server4	Hyper-V host	Run shielded virtual machines
Server5	Hyper-V host	None
Server6	Member server	Run Active Directory Federation Services (AD FS)
VM1	Virtual machine hosted on Server 5	None
VM2	Virtual machine hosted on Server 5	None
VM3	Virtual machine hosted on Server 5	None

The virtual machines are configured as follows:

- Each virtual machine has one virtual network adapter.
- VM1 and VM2 are part of a Network Load Balancing (NLB) cluster.
- All of the servers on the network can communicate with all of the virtual machines. End of repeated scenario.

You create a new NLB cluster that contains VM3.

You need to ensure that VM2 can remain in the original cluster and be added to the new cluster. What should you do first?

- A. Add a new virtual network adapter to VM2.
- B. Install the Web Application Proxy server role on VM2 and VM3.
- C. Modify the default port rule.
- D. Change the cluster operation mode.

Answer: A

NEW QUESTION 100

DRAG DROP

You have a server named Server1 that runs Windows Server 2016.

On Server1 you use the Basic template to create a new Data Collector Set named CollectorSet1.

You need to configure data collection for the performance counters. The configuration must support the following requirements:

Data collection must run on a schedule.

Data collection must stop if there is less than 1 GB of free disk space.

What should you modify to meet each requirement? To answer, drag the appropriate settings to the correct requirements. Each setting may be used once, more than once, or not at all. You may need to drag the Split bar between panes or scroll to view content.

Settings to Modify

The Data Manager settings of CollectorSet1

The properties of the performance counter data collector

The properties of CollectorSet1

Answer Area

Data collection must run on a schedule:

Setting to modify

Data collection must stop if there is less than 1 GB of free disk space:

Setting to modify

- A. Mastered
- B. Not Mastered

Answer: A

Explanation:

Settings to Modify

The Data Manager settings of CollectorSet1

Data collection must run on a schedule:

The properties of CollectorSet1

Data collection must stop if there is less than 1 GB of free disk space:

The properties of the performance counter data collector

NEW QUESTION 104

Your IT company is constantly changing, with new users coming and going throughout the year. One of your common tasks requires the deletion of user accounts for employees who have left the company. Which command can be used to delete user accounts?

- A. LDIFDE
- B. Dsmmod
- C. Dspromo
- D. Netsh

Answer: A

NEW QUESTION 108

You want to boot a Linux Operating System with the Secure Boot option enabled in a virtual machine. This will be the first time you boot the OS. What must you do?

- A. Set the -BootOrder to HardDiskDrive
- B. Configure the virtual machine to use the Microsoft UEFI Certificate Authority
- C. You can't enable Secure Boot with Linux
- D. Set -EnableSecureBoot without specifying a template

Answer: B

Explanation:

Linux operating systems running on newer generation virtual machines can boot with the Secure Boot option enabled. Before you boot the virtual machine for the first time, you must configure the virtual machine to use the Microsoft UEFI Certificate Authority. You can do this from Hyper-V Manager, Virtual Machine Manager, or an elevated Windows Powershell session.

NEW QUESTION 112

You have a container host named Server1 that runs Windows Server 2016. You need to start a Hyper-V container on Server1. Which parameter should you use with the docker run command?

- A. --runtime
- B. --entrypoint
- C. --privileged

- D. --isolation
- E. --expose

Answer: D

Explanation:

<https://docs.microsoft.com/en-us/virtualization/windowscontainers/deploy-containers/system-requirements>

NEW QUESTION 115

You have Hyper-V virtual machines that run 50 web servers, 10 Microsoft SQL Server servers. 10 file servers, and eight domain controllers. You need to implement a backup strategy that meets the following requirements:

- *Backs up all servers
- *Centralizes backup management
- *Performs application-level backups
- *Provides the ability to perform bare metal recovery What should you use?

- A. Microsoft Azure VM Backup
- B. Microsoft Azure Backup Agent
- C. Windows Server Backup
- D. Microsoft Azure Backup Server

Answer: D

NEW QUESTION 117

You have two Hyper-V hosts named Server1 and Server2 that run Windows Server 2016. Server1 hosts a virtual machine named VM1 that is in a Running state.

On Server1, you export VM1 and then you import VM1 on Server2. What is the current state of VM1 on Server2?

- A. Off
- B. Running
- C. Paused
- D. Saved

Answer: B

NEW QUESTION 122

You have three Hyper-V hosts named Server1, Server2, and Server3 that run Windows Server 2016. The servers are nodes in a failover cluster. The failover cluster contains two virtual machines named VM1 and VM2. The roles for VM1 and VM2 have the following configurations.

```
PS C:\> Get-ClusterGroup vm1,vm2 | fl *
```

AntiAffinityClassNames	: {}
AutoFailbackType	: 0
ColdStartSetting	: 0
Cluster	: Cluster1
DefaultOwner	: 1
Description	:
GroupType	: VirtualMachine
FailoverPeriod	: 6
FailoverThreshold	: 4294967295
FailbackWindowEnd	: 4294967295
FailbackWindowStart	: 4294967295
IsCoreGroup	: False
Name	: vm1
OwnerNode	: Server1
PersistentState	: 1
PreferredSite	: {}
Priority	: 0
ReliliencyPeriod	: 429467295
State	: Online
StatusInformation	: 0
Id	: d02c87d1-8alc-4fffb-b87d-adf059416f25

AntiAffinityClassNames	: {}
AutoFailbackType	: 0
ColdStartSetting	: 0
Cluster	: Cluster1
DefaultOwner	: 1
Description	:
GroupType	: VirtualMachine
FailoverPeriod	: 6
FailoverThreshold	: 4294967295
FailbackWindowEnd	: 4294967295
FailbackWindowStart	: 4294967295
IsCoreGroup	: False
Name	: vm2
OwnerNode	: Server1
PersistentState	: 1
PreferredSite	: {}
Priority	: 3000
ResiliencyPeriod	: 4294967295
State	: Online
StatusInformation	: 0
Id	: ab38e657-bfcf-463d-a88b-d4e99aff4ef1

All of the nodes in the failover cluster have sufficient resources to run VM1 and VM2 concurrently. VM1 and VM2 fail over to Server3. What is the state of each virtual machine after the failover?

- A. Both VM1 and VM2 are stopped.
- B. Both VM1 and VM2 are running.
- C. VM1 is stopped and VM2 is running.
- D. VM1 is stopped and VM2 is paused.

Answer: C

Explanation:

References:

[https://msdn.microsoft.com/en-us/library/jj151956\(v=vs.85\).aspx](https://msdn.microsoft.com/en-us/library/jj151956(v=vs.85).aspx)

NEW QUESTION 124

HOTSPOT
You have a Windows Server 2016 failover cluster that has a cluster network named ClusterNetwork1. You need to ensure that ClusterNetwork1 is enabled for cluster communication only.
What command should you run? To answer, select the appropriate options in the answer area.

Answer Area

(

▼

Get-ClusterNetwork
Get-ClusterResource
Set-ClusterParameter
Update-ClusterIPResource

ClusterNetwork1).

▼

ID
Metric
Role
State

=1

- A. Mastered
- B. Not Mastered

Answer: A

Explanation:

Answer Area

(

▼

Get-ClusterNetwork
Get-ClusterResource
Set-ClusterParameter
Update-ClusterIPResource

ClusterNetwork1).

▼

ID
Metric
Role
State

=1

NEW QUESTION 126

HOTSPOT
You plan to deploy three servers named Server1, Server2, and Server3 that will run Windows Server 2016. The servers will have the following disk configurations:
Server1 will have a C: drive of 2 TB.
Server2 will have two disks. The C: drive will be 2 TB. The D: drive will be 1TB. D: must support file system-based compression.
Server3 will have two disks. The C: drive will be 2 TB. The D: drive will be 1TB and must support file- system based quotas.
Which file system can you use for each drive? To answer, select the appropriate options in the answer area.

Answer Area

C: on all servers:

▼

NTFS only
ReFS only
Either NTFS or ReFS

D: on Server2:

▼

NTFS only
ReFS only
Either NTFS or ReFS

D: on Server3:

▼

NTFS only
ReFS only
Either NTFS or ReFS

- A. Mastered
- B. Not Mastered

Answer: A

Explanation:

Answer Area

C: on all servers:

NTFS only

ReFS only

Either NTFS or ReFS

D: on Server2:

NTFS only

ReFS only

Either NTFS or ReFS

D: on Server3:

NTFS only

ReFS only

Either NTFS or ReFS

NEW QUESTION 128

HOTSPOT

Note: This question is part of a series of questions that use the same scenario. For your convenience, the scenario is repeated in each question. Each question presents a different goal and answer choices, but the text of the scenario is exactly the same in each question in this series.

Your network contains an Active Directory domain named contoso.com. The functional level of the forest and the domain is Windows Server 2008 R2. All servers in the domain run Windows Server 2016 Standard. The domain contains 300 client computers that run either Windows 8.1 or Windows 10.

The domain contains nine servers that are configured as shown in the following table.

Name	Configuration	Planned changes
Server1	Domain controller	None
Server2	File server	Run Failover Clustering and Storage Spaces Direct
Server3	File server	Run Failover Clustering and Storage Spaces Direct
Server4	Hyper-V host	Run shielded virtual machines
Server5	Hyper-V host	None
Server6	Member server	Run Active Directory Federation Services (AD FS)
VM1	Virtual machine hosted on Server5	None
VM2	Virtual machine hosted on Server5	None
VM3	Virtual machine hosted on Server5	None

The virtual machines are configured as follows:

Each virtual machine has one virtual network adapter.

VM1 and VM2 are part of a Network Load Balancing (NLB) cluster.

All of the servers on the network can communicate with all of the virtual machines. For VM1 and VM2, you plan to use live migration between Server4 and Server5.

You need to ensure that when the virtual machines migrate, they maintain connectivity to the network.

Which virtual switch names and connection types should you use on each server? To answer, select the appropriate options in the answer area.

Answer Area

Virtual switch connection type on Server4:

▼

External network

Internal network

Private network

Virtual switch connection type on Server5:

▼

External network

Internal network

Private network

Virtual switch name on Server4:

▼

External on Server4

Network switch

Server4

Virtual switch name on Server5:

▼

External on Server5

Network switch

Server5

- A. Mastered
- B. Not Mastered

Answer: A

Explanation:

Answer Area

Virtual switch connection type on Server4:

▼

External network

Internal network

Private network

Virtual switch connection type on Server5:

▼

External network

Internal network

Private network

Virtual switch name on Server4:

▼

External on Server4

Network switch

Server4

Virtual switch name on Server5:

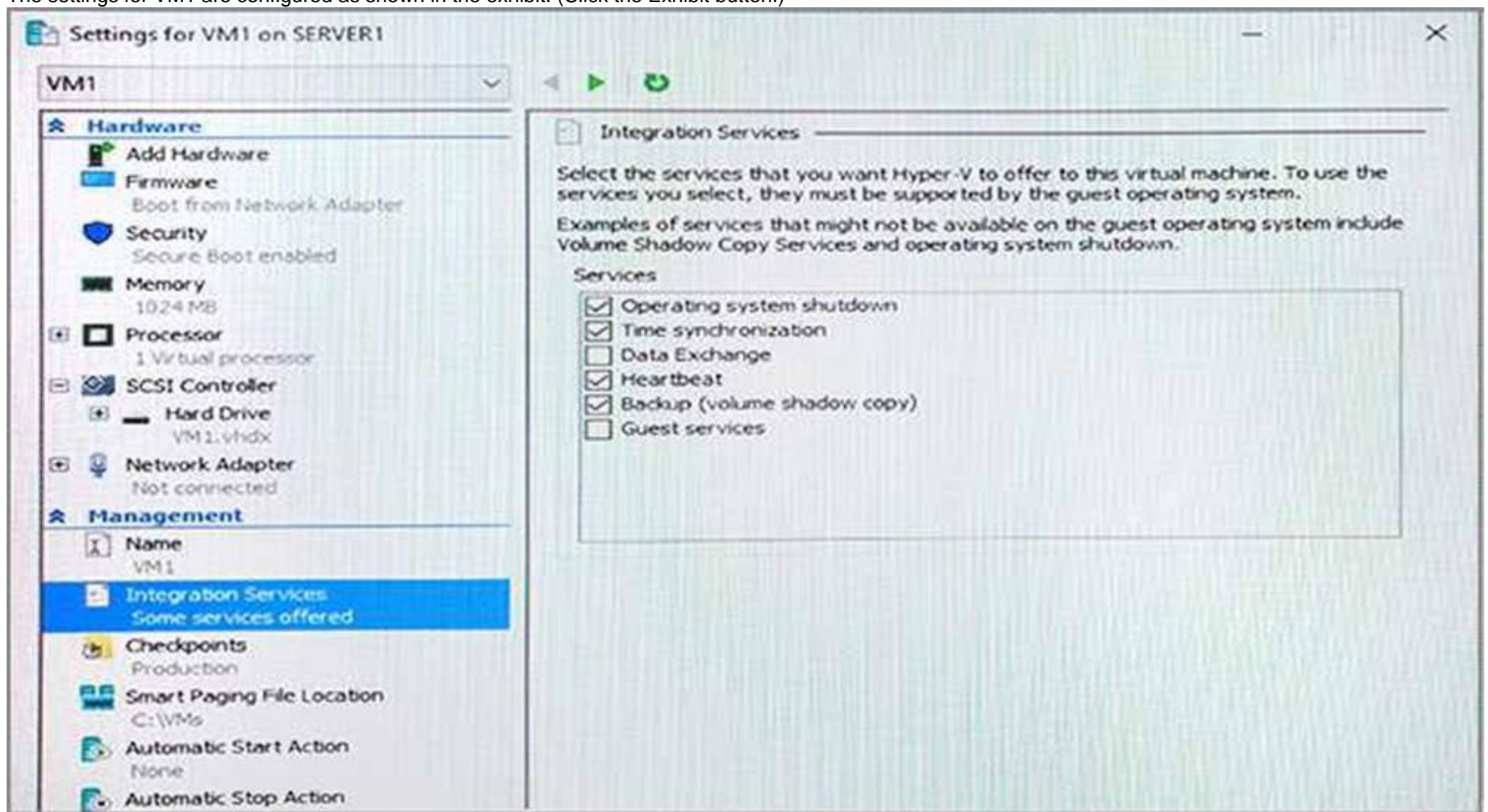
▼

External on Server5

Network switch

Server5

Note: This question is part of a series of questions that present the same scenario. Each question in the series contains a unique solution that might meet the stated goals. Some question sets might have more than one correct solution, while others might not have a correct solution. After you answer a question in this section, you will NOT be able to return to it. As a result, these questions will not appear in the review screen. You have a Hyper-V host named Server1 that hosts a virtual machine named VM1. Server1 and VM1 run Windows Server 2016. The settings for VM1 are configured as shown in the exhibit. (Click the Exhibit button.)



You need to ensure that you can use the Copy-VMFile cmdlet on Server1 to copy files from VM1. Solution: You connect VM1 to an internal virtual switch. Does this meet the goal?

- A. Yes
- B. No

Answer: B

NEW QUESTION 136

You have Nano Server image named Disk1.vhdx.

You mount Disk1.vhdx.

You need to add a folder that contains several files to the image. Which tool or cmdlet you should use?

- A. File Explore.
- B. Add-Windows Image
- C. Nano Server Image Builder
- D. Server Manager

Answer: D

NEW QUESTION 137

Note This question is part of a series of questions that use the same scenario. For your convenience, the scenario is repeated in each question. Each question presents a different goal and answer choices, but the text of the scenario is exactly the same in each question in this series.

Start of Repeated Scenario:

A company named Contoso, Ltd. has several servers that run Windows Server 2016 Contoso has a Hyper V environment that uses failover clustering and Windows Server Update Services (WSUS). The environment contains several Windows containers and several virtual machines.

The WSUS deployment contains one upstream server that is located on the company's perimeter network and several downstream servers located on the internal network, A firewall separates the upstream server from the downstream servers.

You plan to deploy a human resources application to a new server named HRServer5. HRServer5 contains a FAT32-formatted data volume.

The CIO of Contoso identifies the following requirements for the company's IT department:

- Deploy failover cluster to two new virtual machines.
- Store all application databases by using Encrypted File System (EFS).
- Ensure that each Windows container has a dedicated IP address assigned by a DHCP server
- Produce a report that lists the processor time used by all of the processes on a server named Server 1 for five hour.

Encrypt all communication between the internal network and the perimeter network, including all WSUS communications.

- Automatically load balance the virtual machines hosted in the Hyper-V cluster when processor utilization exceeds 70 percent.

End of Repeated Scenario.

You need to modify the Hyper V cluster to meet the load balancing requirement for the virtual machine. Which command should you run?

- A. network address translation (NAT)
- B. I2bridge
- C. I2tunnel

D. transparent

Answer: A

NEW QUESTION 141

HOTSPOT

You have a server named Server1 that runs Windows Server 2016.

On Server1, you have a custom image of Windows Server 2016 Standard in a file named Image1.wim. The image is mounted to C:\Folder1.

You discover corrupted files in the WinSxS folder of the mounted image.

From the Windows Server 2016 installation media, you mount an image of Windows Server 2016 Standard from Install.wim to C:\Folder2.

You need to repair the corrupted image.

Which command should you run? To answer, select the appropriate options in the answer area. NOTE: Each correct selection is worth one point.

Answer Area

Dism /Cleanup-Image /Image:

C:\Folder1

C:\Folder1\image1.wim

C:\Folder2\install.wim:1

C:\Folder2\Windows

/CheckIntegrity

/RestoreHealth

/ScanHealth

/StartComponentCleanup

/Source:

C:\Folder1

C:\Folder1\image1.wim

C:\Folder2\install.wim:1

C:\Folder2\Windows

- A. Mastered
- B. Not Mastered

Answer: A

Explanation:

References: <https://docs.microsoft.com/en-us/windows-hardware/manufacture/desktop/repair-a-windows-image>

NEW QUESTION 143

You have two servers named Server1 and Server 2 that run Windows Server 2016.

Server 1 and Server 2 are nodes in a Network Load Balancing (NLB) cluster. The Web Sever server role is installed on each node.

Users report that when they submit web form data, sometimes the data is not stored, and they must full in the form again.

You need to resolve the issue. The solution must ensure that connections are load balanced between Server 1 Server 2.

What should you do in the NLB cluster?

- A. Modify the existing port rules.
- B. Modify the Cluster operation mode.
- C. Add the Microsoft Load Balancing/Failover Provider service to all of the network adapters.
- D. Add an IP address.

Answer: B

NEW QUESTION 144

You have a Windows Server 2016 failover cluster named Ousted that contains three nodes named

Server 1, Server 2, and Server 3. Each node hosts several virtual machines. the virtual machines are configured to fail over to another node in Ousted if the hosting node tails.

You need to ensure that it if the Cluster service tails on one of the nodes, the virtual machine of that node will fail over immediately.

Which setting should you configure?

- A. failureConditionLevel
- B. QuarantineDuration
- C. Resiliency Period
- D. ResiliencyLevel

Answer: B

NEW QUESTION 145

HOTSPOT

You have a server named Server1 that runs Windows Server 2016. You create a storage pool named Pool1. Pool1 contains three disks.

You need to create a two-way mirror storage space from the disks in Pool1.

Which command should you run? To answer, select the appropriate options in the answer area. NOTE: Each correct selection is worth one point.

Answer Area

<div><div></div><div>New-StorageSunsystemVirtualDisk New-VHD New-VirtualDisk New-Volume</div></div>	<div><div></div><div>-StoragePoolFirendlyName Pool1 -FirendlyName Space1- -UseMaximumSize -ResiliencySettingName Mirror</div></div>
<div><div>-NumberofDataCopies</div><div><div></div><div>1 2 3</div></div></div>	<div><div>-NumberOfColumns-</div><div><div></div><div>1 2 3</div></div></div>

- A. Mastered
- B. Not Mastered

Answer: A

Explanation:

References: <https://charbelnemnom.com/2014/09/step-by-step-how-to-create-a-two-way-mirrored-storage-space-via-powershell-storagespaces-powershell/>

NEW QUESTION 149

You have a Hyper-V host named Server1 that runs Windows Server 2016. Server1 host a virtual machine named VM1. VM1 has the following settings: Nested virtualization is enabled.

Dynamic Memory is disabled. VM1 is currently running.

You need to adjust the amount of memory assigned to VM1 as quickly as possible. What should you do first?

- A. Change the memory buffer setting of VM1.
- B. Pause VM1.
- C. Shut down VM1.
- D. Enable Dynamic Memory for VM1.

Answer: D

NEW QUESTION 150

You have a Hyper-V host named Server1 that runs Windows Server 2016. Server1 has ab external virtual switch named Switch1. Server1 hosts a virtual machine named VM1 that runs Windows Server 2016. VM1 has one network adapter. The network adapter connects to Switch1.

You need to limit the maximum network bandwidth available to VM1 to 100 Mbps. The solution must limit the bandwidth for VM1 only.

Which cmdlet should you run?

- A. Set-NetAdapter
- B. Set-VMNetworkAdapter
- C. Set-VM
- D. Set-NetAdapterVmq
- E. Set-NetworkSwitchPortProperty

Answer: B

Explanation:

The Set-VMNetworkAdapterVlan cmdlet configures virtual LAN settings for the traffic through a virtual network adapter.

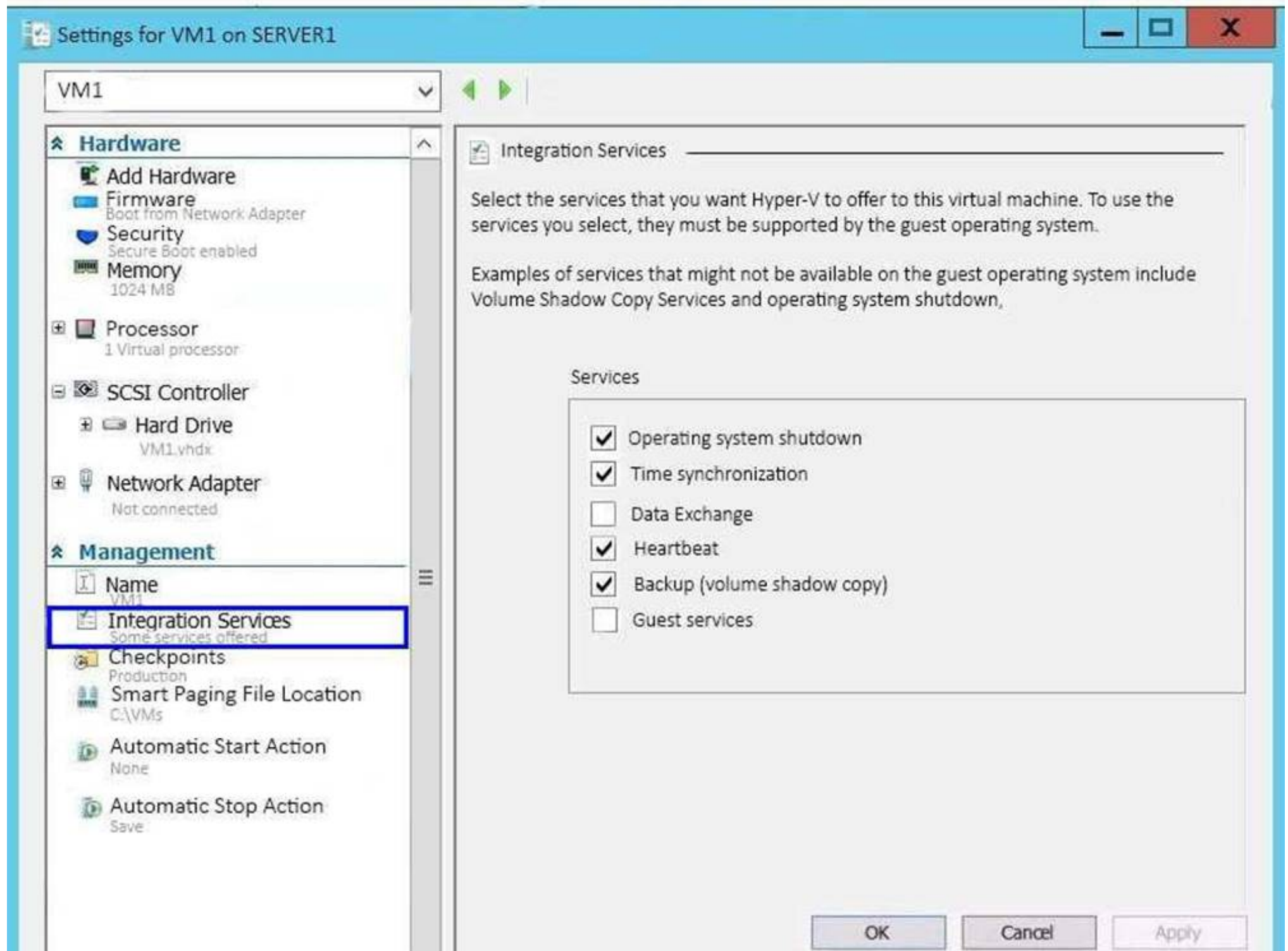
NEW QUESTION 154

Note: This question is part of a series of questions that present the same scenario. Each question in the series contains a unique solution that might meet the stated goals. Some question sets might have more than one correct solution, while others might not have a correct solution.

After you answer a question in this section, you will NOT be able to return to it. As a result, these questions will not appear in the review screen.

You have a Hyper-V host named Server1 that hosts a virtual machine named VM1. Server1 and VM1 run Windows Server 2016.

The settings for VM1 are configured as shown in the exhibit. (Click the Exhibit button.)



You need to ensure that you can use the Copy-VMFile cmdlet on Server1 to copy files from VM1. Solution: You enable the Guest services integration service for VM1.

Does this meet the goal?

- A. Yes
- B. No

Answer: A

Explanation:

References: [https://technet.microsoft.com/en-us/library/dn798297\(v=ws.11\).aspx](https://technet.microsoft.com/en-us/library/dn798297(v=ws.11).aspx)

NEW QUESTION 159

HOTSPOT

You have a Windows Server 2016 failover cluster named Cluster1. You need to implement Cloud Witness for Cluster 1.

What should you do? To answer, select the appropriate options in the answer area. NOTE: Each correct selection is worth one point.

Answer Area

In Microsoft Azure, create:

An availability set
An integration account
A public IP address
A Recovery Services vault
A storage account

On Cluster1, run:

Add-ClusterResource
Add-ClusterResourceType
Set-ClusterParameter
Set-ClusterQuorum

- A. Mastered
- B. Not Mastered

Answer: A

Explanation:

References:

<https://www.vembu.com/blog/deploying-a-azure-cloud-witness-for-a-failover-cluster-in-windows-server-2016/>
<https://docs.microsoft.com/en-us/powershell/module/failoverclusters/set-clusterquorum?view=win10-ps>

NEW QUESTION 160

You have a server named Server1 that runs Windows Server 2016.

The server has an application named App1. App1 writes entries to the Application event log when errors are encountered. The events have IDs of either 111 or 112.

You need to restart the service whenever either of these events is logged. What should you do?

- A. From Windows PowerShell, run the Write-EventLog cmdlet and specify the-EventID parameter and the -Source parameter.
- B. From Event Viewer, create a custom view that has a filter for the event IDs.
- C. From Event Viewer, create a subscription that has a filter for the event IDs.
- D. From Task Scheduler, use Create Task to create one task that includes triggers for both event IDs.
- E. From Windows PowerShell, run the Get-SMSEvent cmdlet and pipe the output to the Start-NetEventSession cmdlet.
- F. From Performance Monitor, add an Event Trace Session data collector that uses the Microsoft-Windows-Eventlog provider.

Answer: D

NEW QUESTION 163

Note: This question is part of a series of questions that present the same scenario. Each question in

the series contains a unique solution that might meet the stated goals. Some question sets might have more than one correct solution, while others might not have a correct solution.

After you answer a question in this section, you will NOT be able to return to it. As a result, these questions will not appear in the review screen.

Your network contains an Active Directory forest named contoso.com. The forest contains a child domain named eu.contoso.com.

You plan to implement live migration between two Hyper-V hosts that run Windows Server 2016. The hosts are configured as shown in the following table.

Host name	Configuration
Host1	<ul style="list-style-type: none">• Is a member of the contoso.com domain• Uses an Intel Xeon processor released in 2012• Has an external virtual switch named Switch1• Hosts a virtual machine named VM1 that connects to Switch1
Host2	<ul style="list-style-type: none">• Is a member of the eu.contoso.com domain• Uses an Intel Xeon processor released in 2016• Has an external virtual switch named Switch1

You need to ensure that you can perform a live migration of VM1 from Host1 to Host2. Solution: You move Host2 to the contoso.com domain. Does meet the goal?

- A. Yes
B. No

Answer: B

NEW QUESTION 166

Note: This question is part of a series of questions that present the same scenario. Each question in the series contains a unique solution that might meet the stated goals. Some question sets might have more than one correct solution, while others might not have a correct solution.

After you answer a question in this section, you will NOT be able to return to it. As a result, these questions will not appear in the review screen.

Your network contains an Active Directory forest.

You install Windows Server 2016 on 10 virtual machines.

You need to deploy the Web Server (IIS) server role identically to the virtual machines.

Solution: You use Windows PowerShell Desired State Configuration (DSC) to create a default configuration, and then you apply the configuration to the virtual machines.

Does this meet the goal?

- A. Yes
B. No

Answer: A

Explanation:

References:

<https://www.simple-talk.com/sysadmin/powershell/powershell-desired-state-configuration-the-basics/>

NEW QUESTION 171

You have a server named Server1 that runs Windows Server 2016 You install the Docker daemon on

Server1 You need to configure the Docker daemon to accept connections only on TCP port 64500. What should you do?

- A. Run theNew-NetFirewallRulecmdlet
B. Run theSet-ServiceWindows PowerShell cmdlet.
C. Run the sc config command.
D. Run the sc control command.

Answer: C

NEW QUESTION 173

Note: This question is part of a series of questions that present the same scenario. Each question in the series contains a unique solution that might meet the stated goals. Some question sets might have more than one correct solution, while others might not have a correct solution.

After you answer a question in this section, you will NOT be able to return to it. As a result, these questions will not appear in the review screen.

You network contains an Active Directory forest named contoso.com. The forest contains a child domain named eu.contoso.com.

You plan to implement live migration between two Hyper-V hosts that run Windows Server 2016. The hosts are configured as shown in the following table.

Host name	Configuration
Host1	<ul style="list-style-type: none"> Is a member of the contoso.com domain Uses an Intel Xeon processor released in 2012 Has an external virtual switch named Switch1 Hosts a virtual machine named VM1 that connects to Switch1
Host2	<ul style="list-style-type: none"> Is a member of the eu.contoso.com domain Uses an Intel Xeon processor released in 2016 Has an external virtual switch named Switch1

You need to ensure that you can perform a live migration of VM1 from Host1 to Host2.

Solution: You replace the processor in Host1 with a processor that is identical to the processor in Host2.

Does meet the goal?

- A. Yes
B. No

Answer: B

NEW QUESTION 177

HOTSPOT

You have a Hyper-V host named Server1 that runs Windows Server 2016 datacenter. Server1 is activated.

On Server1, you deploy a virtual machine named VM1 that has a Server Core installation of Windows Server 2016 Standard.

You need to activate VM1 by using Automatic Virtual Machine Activation (AVMA).

Which command should you run? To answer, select the appropriate options in the answer area. NOTE: Each correct selection is worth one point.

Answer Area

▼

reg.exe
regsvr32.exe
setup.exe
Set-VM
Set-WindowsProductKey
slmgr.vbs

▼

/ipk
/pkey
/rearm
/unattend:PID=
-ProductKey

C3RCX-M6NRP-6CXC9-TW2F2-4RHYD

- A. Mastered
B. Not Mastered

Answer: A

Explanation:

References: <https://blogs.technet.microsoft.com/askcore/2013/11/13/activating-virtual-machines-via-automatic-virtual-machine-activation-in-windows-server-2012-r2/>

NEW QUESTION 179

You have a server named Server1 that runs Windows Server 2016.

The server has an application named App1. App1 writes entries to the Application event log when errors are encountered. The events have IDs of either 111 or 112.

You need to restart the service whenever either of these events is logged. What should you do?

- A. From Windows PowerShell, run the Get-SMSEvent cmdlet and pipe the output to the Start-NetEventSession cmdlet.
B. From Event Viewer, create a subscription that has a filter for the event IDs.
C. From Event Viewer, use the Create Basic Task Wizard for each event ID.
D. From Windows PowerShell, run the Get-Event cmdlet and pipe the output to the Start-NetEventSession cmdlet.

Answer: C

NEW QUESTION 183

You have a server named VM1. VM1 is a virtual machine on a Hyper-V host that runs Windows Server 2016. You need to create a checkpoint that includes the

virtual machine memory state of VM1.
What command should you run? To answer, select the appropriate options in the answer area.

▼

Checkpoint-VM

Get-VMSnapshot

Set-VM

-Name VM1 -CheckpointType

▼

Production

ProductionOnly

Standard

▼

Checkpoint-VM

Export-VMSnapshot

Get-VHDSnapshot

-Name VM1 -SnapshotName Snapshot1

- A. Mastered
- B. Not Mastered

Answer: A

Explanation:
References:
<https://docs.microsoft.com/en-us/virtualization/hyper-v-on-windows/user-guide/checkpoints>

NEW QUESTION 185

You have a Hyper-V host named Server1 that runs Windows Server 2016. Server1 hosts a virtual machine named VM1 that runs Windows Server 2012. VM1 has the following configuration.

```
C:\>Get-VM VM1 | fl Version, HardDrives, DynamicMemoryEnabled, Generation, MemoryStartup

Version           : 5.0
HardDrives        : {Hard drive on IDE controller number 0 at location 0}
DynamicMemoryEnabled : False
Generation        : 1
MemoryStartup     : 536870912

C:\>Get-VMIntegrationService VM1

VMName Name                Enabled PrimaryStatusDescription SecondaryStatusDescription
-----
VM1    Guest Service Interface False      OK
VM1    Heartbeat                False      OK
VM1    Key-Value Pair Exchange  False      OK
VM1    Shutdown                  False      OK
VM1    Time Synchronization     False      OK
VM1    VSS                       False      OK
```

You discover that when you back up Server1, VM1 temporarily pauses.
You need to ensure that you can back up Server1 without causing downtime on VM1. What should you do?

- A. Increase the memory on VM1
- B. Connect the hard disk drive of VM1 to an SCSI controller
- C. Update the virtual machine version of VM1
- D. Upgrade VM1 to Windows Server 2016
- E. Enable the VSS integration service on VM1

Answer: E

Explanation:
References:
<https://www.starwindsoftware.com/blog/hyper-v-backup-challenges-windows-server-2016-needs-to-address>

NEW QUESTION 190

.....

About Exambible

[Your Partner of IT Exam](#)

Found in 1998

Exambible is a company specialized on providing high quality IT exam practice study materials, especially Cisco CCNA, CCDA, CCNP, CCIE, Checkpoint CCSE, CompTIA A+, Network+ certification practice exams and so on. We guarantee that the candidates will not only pass any IT exam at the first attempt but also get profound understanding about the certificates they have got. There are so many alike companies in this industry, however, Exambible has its unique advantages that other companies could not achieve.

Our Advances

* 99.9% Uptime

All examinations will be up to date.

* 24/7 Quality Support

We will provide service round the clock.

* 100% Pass Rate

Our guarantee that you will pass the exam.

* Unique Gurantee

If you do not pass the exam at the first time, we will not only arrange FULL REFUND for you, but also provide you another exam of your claim, ABSOLUTELY FREE!

NEW QUESTION 1

Note: This question is part of a series of questions that present the same scenario. Each question in the series contains a unique solution that might meet the stated goals. Some question sets might have more than one correct solution, while others might not have a correct solution.

After you answer a question in this section, you will NOT be able to return to it. As a result, these questions will not appear in the review screen.

You have a server named Server1 that runs Windows Server 2016. Server1 has the Hyper-V server role and Docker installed.

You pull the Microsoft/iis Docker image to Server1.

You need to view the available space in the Microsoft/iis Docker image. Solution: You run the command `docker run -d Microsoft/iis`.

You open Disk Management on Server1. Does this meet the goal?

- A. Yes
- B. No

Answer: B

NEW QUESTION 2

You have a Hyper-V server named Server1 that runs Windows Server 2012 R2.

Server1 hosts a virtual machine named VM1 that runs Windows Server 2016. VM1 connects to an external virtual switch named Switch1.

You can ping VM1 from Server1.

You upgrade Server1 to Windows Server 2016.

You need to ensure that you can connect to VM1 by using PowerShell Direct. What should you do?

- A. Configure the firewall rules on Server1.
- B. Enable the Hyper-V extensible switch extensions on Server1.
- C. Upgrade the configuration version of VM1.
- D. Configure the firewall rules on VM1.

Answer: C

NEW QUESTION 3

HOTSPOT

Your network contains an Active Directory forest. The forest contains two domain controllers named DC1 and DC2 that run Windows Server 2016. DC1 holds all of the operations master roles.

DC1 experiences a hardware failure.

You plan to use an automated process that will create 1000 user accounts. You need to ensure that the automated process can complete successfully.

Which command should you run? To answer, select the appropriate options in the answer area.

▼

Move-ADDirectoryServerOperatinMasterRole
ntdsutil

-identity "DC2" -OperationMasterRole

▼

PDCEmulator
InfrastructureMaster
RIDMaster
SchemaMaster

▼

Seize pdc
-Force

- A. Mastered
- B. Not Mastered

Answer: A

Explanation:

▼

Move-ADDirectoryServerOperatinMasterRole
ntdsutil

-identity "DC2" -OperationMasterRole

▼

PDCEmulator
InfrastructureMaster
RIDMaster
SchemaMaster

▼

Seize pdc
-Force

NEW QUESTION 4

You deploy a Hyper-V server named Served in an isolated test environment. The test environment is prevented from accessing the Internet. Server1 runs the Datacenter edition of Windows Server 2016. You plan to deploy the following guest virtual machines on the server.

Quantity	Operating system	Domain member
10	Windows Server 2012 R2	Yes
4	Windows Server 2016	No
5	Windows Server 2016	Yes

Which activation model should you use for the virtual machines'?

- A. Multiple Activation Key (MAK)
- B. Automatic Virtual Machine Activation (AVMA)
- C. Original Equipment Manufacturer (OEM) key
- D. Key Management Service (KMS)

Answer: B

NEW QUESTION 5

HOTSPOT

Your network contains an Active Directory domain named contoso.com. The domain contains a DNS server named Server1.

You enable Response Rate Limiting on Server1.

You need to prevent Response Rate Limiting from applying to hosts that reside on the network of 10.0.0.0/24.

Which cmdlets should you run? To answer, select the appropriate options in the answer area.

First cmdlet to run:

Add-DnsServerClientSubnet
Enable-DnsServerPolicy
Set-DnsServerResponseRateLimiting
Set-DnsServerResponseRateLimitingExceptionlist

Second cmdlet to run:

Add- DnsServerResponseRateLimitingExceptionlist
Add-DnsServerQueryResolutionPolicy
Add-DnsServerZoneScope
Set-DnsServerDsSetting

- A. Mastered
- B. Not Mastered

Answer: A

Explanation:

First cmdlet to run:

Add-DnsServerClientSubnet
Enable-DnsServerPolicy
Set-DnsServerResponseRateLimiting
Set-DnsServerResponseRateLimitingExceptionlist

Second cmdlet to run:

Add- DnsServerResponseRateLimitingExceptionlist
Add-DnsServerQueryResolutionPolicy
Add-DnsServerZoneScope
Set-DnsServerDsSetting

NEW QUESTION 6

You have a server that runs Windows Server 2016.

The server contains a storage pool named Pool1. Pool1 contains five physical disks named Disk1, Disk2, Disk3, Disk4, and Disk5.

A virtual disk named VirtualDisk1 is stored in pool1. VirtualDisk1 uses the parity storage layout. Disk3 fails.

You need to remove Disk3 from Pool1.

Which two commands should you run? Each correct answer presents part of the solution.

- A. Update-StoragePool –FriendlyName Pool1
- B. Set-ResiliencySetting –StoragePool Pool1 –PhysicalDiskRedundancyDefault 4
- C. Reset-PhysicalDisk –FriendlyName Disk3
- D. Set-PhysicalDisk –FriendlyName Disk3 –Usage Retired
- E. Remove-PhysicalDisk –FriendlyName Disk3

Answer: BE

NEW QUESTION 7

Your network contains an Active Directory domain named contoso.com. The domain contains two servers named Server1 and Server2 that have the same hardware configuration

You need to asynchronously replicate volume F: from Server1 to Server2. What should you do?

- A. RunNew-SRPartnershipand specify the -RephcationModeparameter.
- B. install the Failover Clustering feature and create a new cluster resource group.
- C. Install the Failover Clustering feature and use Cluster Shared Volumes (CSV).
- D. RunSet-DfsrServiceConfigurationand specify the -RPCPortparameter

Answer: A

NEW QUESTION 8

HOTSPOT

You have a server named Server1 that runs Windows Server 2016 Server1 has the Windows Application proxy role service installed

You plan to deploy Remote Desktop Gateway (RD Gateway) services. Clients will connect to the RD Gateway services by using various types of devices including Windows, iOS and Android devices.

You need to publish the RD Gateway services through the Web Application Proxy.

Which command should you run? To answer, select the appropriate options in the answer area.

Add-WebApplicationProxyApplication
Set-WebApplicationProxyApplication
Set-WebApplicationProxyConfiguration

-BackendServerURL 'https://rdg.contoso.com/rdg1/'
-ExternalCertificateThumbprint
'1a2b3c4d5e6f1a2b3c4d5e6f1a2b3c4d5e6f1a2b'
-ExternalURL 'https://rdg.contoso.com/rdg1'
-Name 'RDG1'

-ExternalPreAuthentication

ADFS
ADFSforOAuth
ClientCertificate
PassThrough

-ADFSRelyingPartyName 'Default provider'

-BackendServerAuthenticationSPN 'HTTP/RDG1'

- A. Mastered
- B. Not Mastered

Answer: A

Explanation:

Add-WebApplicationProxyApplication
Set-WebApplicationProxyApplication
Set-WebApplicationProxyConfiguration

-BackendServerURL 'https://rdg.contoso.com/rdg1/'
-ExternalCertificateThumbprint
'1a2b3c4d5e6f1a2b3c4d5e6f1a2b3c4d5e6f1a2b'
-ExternalURL 'https://rdg.contoso.com/rdg1'
-Name 'RDG1'

-ExternalPreAuthentication

ADFS
ADFSforOAuth
ClientCertificate
PassThrough

-ADFSRelyingPartyName 'Default provider'

-BackendServerAuthenticationSPN 'HTTP/RDG1'

NEW QUESTION 9
HOTSPOT

You have a server named Served that runs Windows Server 2016. Server1 has the Windows Application Proxy role service installed. You are publishing an application named App1 that will use Integrated Windows authentication as shown in the following graphic.



Use the drop-down menus to select the answer choice that completes each statement based on the information presented in the graphic

Before you can complete the wizard, you must [answer choice]

▼

change the external certificate
configure the Backend server SPN
select Enable HTTP to HTTPS redirection

To ensure that users can access App1 externally, you must
change the External URL to [answer choice.]

▼

https://app1.contoso.com/app1
https://server02.contoso.com/app1
https://server02.contoso.com/publish/app1

- A. Mastered
- B. Not Mastered

Answer: A

Explanation:

Before you can complete the wizard, you must [answer choice]

▼

change the external certificate
configure the Backend server SPN
select Enable HTTP to HTTPS redirection

To ensure that users can access App1 externally, you must
change the External URL to [answer choice.]

▼

https://app1.contoso.com/app1
https://server02.contoso.com/app1
https://server02.contoso.com/publish/app1

NEW QUESTION 10

You need to create highly available storage spaces that connect to directly attached storage on the hosts Which cmdlet should you use?

- A. Enable-ClusterStorageSpacesDiret
- B. Set-StoragePool
- C. Add-ClusterDisk
- D. Update-ClusterVirtualMachineConfiguration

Answer: A

NEW QUESTION 10

You have a failover cluster named Cluster1

A virtual machine named VM1 is a highly available virtual machine that runs on Cluster1 A custom application named App1 runs on VM1.

You need to configure monitoring of VM1. If App1 adds an error entry to the Application event log, VM1 should be automatically rebooted and moved to another cluster node

Which tool should you use?

- A. Hyper-V Manager
- B. Failover Cluster Manager
- C. Server Manager
- D. Resource Monitor

Answer: B

NEW QUESTION 11

You are configuring a Windows Server 2016 failover cluster in a workgroup.

Before installing one of the nodes, you run the ipconfig /all command and receive the following output

```
Windows IP Configuration

Host Name . . . . . : Server1
Primary Dns Suffix . . . . . :
Node Type . . . . . : Hybrid
IP Routing Enabled. . . . . : No
WINS Proxy Enabled. . . . . : No
DNS Suffix Search List. . . . . :

Ethernet adapter Ethernet:

Connection-specific DNS Suffix . :
Description . . . . . : Microsoft Hyper-V Network Adapter
Physical Address. . . . . : 00-15-5D-01-62-17
DHCP Enabled. . . . . : Yes
Autoconfiguration Enabled . . . . : Yes
Link-local IPv6 Address . . . . . : fe80::7548:46d8:8ffc:d5ab%17(Preferred)
IPv4 Address. . . . . : 192.168.1.154(Preferred)
Subnet Mask . . . . . : 255.255.255.0
Default Gateway . . . . . : 192.168.1.10
DHCPv6 IAID . . . . . : 369099429
DHCPv6 Client DUID. . . . . : 00-01-00-01-1A-1D-5D-60-00-02-A5-4E-F4-85
DNS Servers . . . . . : 192.168.1.32
NetBIOS over Tcpip. . . . . : Disabled
```

You need to ensure that Server 1 can be added as a node in the cluster What should you do?

- A. Assign a static IP address
- B. Change the Node Type to Broadcast
- C. Configure a DNS suffix
- D. Enable NetBIOS over TCP/IP

Answer: C

NEW QUESTION 12

You have an application named App1 App1 is distributed to multiple Hyper-V virtual machines in a multitenant environment You need to ensure that the traffic is distributed evenly among the virtual machines that host App1 What should you include in the environment?

- A. Network Controller and Windows Server Network Load Balancing (NLB) nodes
- B. Network Controller and Windows Server Software Load Balancing (SLB) nodes
- C. an RAS Gateway and Windows Server Network Load Balancing (NLB) nodes
- D. an RAS Gateway and Windows Server Software Load Balancing (SLB) nodes

Answer: D

NEW QUESTION 13

HOTSPOT

You have an Active Directory domain named Contoso.com. The domain contains Hyper-V hosts named Server1 and Server2 that run Windows Server 2016. The Hyper-V hosts are configured to use NVGRE for network virtualization. You have four virtual machines that are connected to an external switch. The virtual machines are configured as shown. To which virtual machine or virtual machines can VM1 and VM3 connect? To answer, select the appropriate options in the answer area.

Virtual Machine Name	Hyper-V host	IP address	Netmask	GRE key
VM 1	Server1	192.168.1.16	255.255.255.0	16
VM 2	Server1	192.168.1.232	255.255.255.0	32
VM 3	Server2	192.168.1.32	255.255.255.0	32
VM 4	Server2	192.168.1.25	255.255.255.0	25
VM 5	Server2	192.168.1.116	255.255.255.0	16
VM 6	Server2	192.168.1.132	255.255.255.0	32

VM1 can connect to:

VM2 only
VM5 only
VM2, VM3, VM5 and VM6 only
VM2, VM3, VM4, VM5, and VM6

VM3 can connect to:

VM6 only
VM2, and VM6 only
VM4, VM5 and VM6 only
VM1, VM2, VM5, and VM6 only
VM1, VM2, VM4, VM5, and VM6

- A. Mastered
- B. Not Mastered

Answer: A

Explanation:

VM1 can connect to:

VM2 only
VM5 only
VM2, VM3, VM5 and VM6 only
VM2, VM3, VM4, VM5, and VM6

VM3 can connect to:

VM6 only
VM2, and VM6 only
VM4, VM5 and VM6 only
VM1, VM2, VM5, and VM6

NEW QUESTION 15

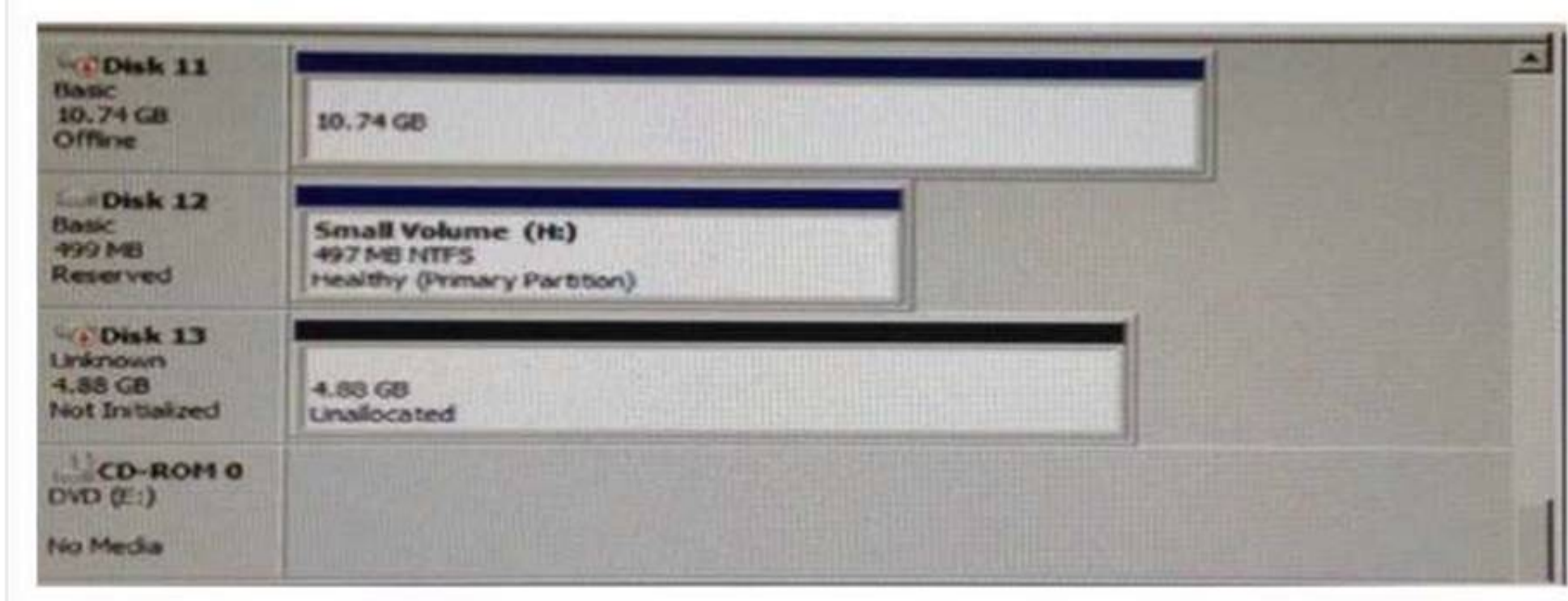
You have a server named Server1 that runs Windows Server 2016. You need to configure Server1 as a multitenant RAS Gateway. What should you install on Server1?

- A. the Network Policy and Access Services server role
- B. the Remote Access server role
- C. the Data Center Bridging feature
- D. the Network Controller server role

Answer: B

NEW QUESTION 17
HOTSPOT

You have a server named Server1 that runs Windows Server 2016 and has the Hyper-V server role installed. You open Disk Management on Server1 as shown in the following graphic.



You plan to configure Disk13 as a pass-through disk for a generation 1 virtual machine. Use the drop-down menus to select the answer choice that completes each statement based on the information presented in the graphic.

The status of Disk 13 must be set to [answer choice.]

▼

Initializing
Offline
Online

If the virtual machine uses Disk 13 as the system partition, Disk 13 must be attached to [answer choice] in Hyper-V Manager.

▼

a Fibre Channel adapter
an IDE controller
a SCSI controller

- A. Mastered
- B. Not Mastered

Answer: A

Explanation:

The status of Disk 13 must be set to [answer choice.]

▼

Initializing
Offline
Online

If the virtual machine uses Disk 13 as the system partition, Disk 13 must be attached to [answer choice] in Hyper-V Manager.

▼

a Fibre Channel adapter
an IDE controller
a SCSI controller

NEW QUESTION 21
DRAG DROP

Your network contains an Active Directory domain named contoso.com. The domain contains two servers named Server1 and Server2 that run Windows Server.

2016.

Server1 has IP Address Management (IPAM) installed Server2 has Microsoft System Center 2016 Virtual Machine Manager (VMM) installed.

You need to integrate IPAM and VMM

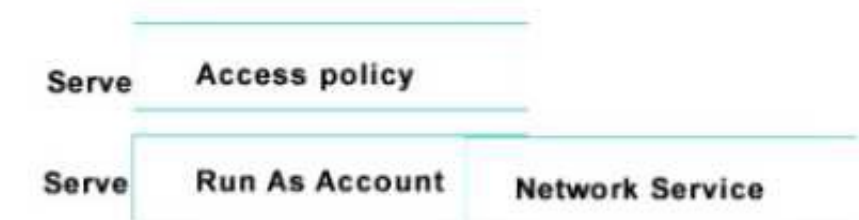
Which types of objects should you create on each server? To answer, drag the appropriate object types to the correct servers Each object type may be used once, more than once, or not at all You may need to drag the split bar between panes or scroll to view content



- A. Mastered
- B. Not Mastered

Answer: A

Explanation:



NEW QUESTION 23

Note: This question is part of a series of questions that use the same similar answer choices An answer choice may be correct for more than one question in the series Each question is independent of the other questions in this series. Information and details provided in a question apply only to that question
 You have a two-node Hyper-V cluster named Cluster1 at a primary location and a stand-alone Hyper- V host named Server1 at a secondary location
 A virtual machine named VM1 runs on Cluster1 You configure a Hyper-V Replica of VM1 to Server1 You need to perform a Test Fai lover of VM1. Which tool should you use?

- A. the clussvc.exe command
- B. the cluster.exe command
- C. the Computer Management console
- D. the configurehyperv.exe command
- E. the Disk Management console
- F. the Failover Cluster Manager console
- G. the Hyper-V Manager console
- H. the Server Manager Desktop app

Answer: G

NEW QUESTION 28

Note: This question is part of a series of questions that use the same similar answer choices. An answer choice may be correct for more than one question in the series. Each question is independent of the other questions in this series. Information and details provided in a question apply only to that question.
 You have an Active Directory domain that contains two Hyper-V servers named Server1 and Server2. Server1 has Windows Server 2016 installed. Server2 has Windows Server 2012 R2 installed.
 Each Hyper-V server has three network cards. Each network card is connected to a different subnet. Server1 contains a dedicated migration network.
 Server2 contains a virtual machine named VM5.
 You plan to perform a live migration of VM5 to Server1.
 You need to ensure that Server1 uses all available networks to perform the live migration of VM5. What should you run1?

- A. the Mount-VHD cmdlet
- B. the Diskpart command
- C. the Set-VHD cmdlet
- D. the Set-VM cmdlet
- E. the Set-VMHost cmdlet
- F. the Set-VMProcessor cmdlet
- G. the Install-WindowsFeature cmdlet
- H. the Optimize-VHD cmdlet

Answer: E

NEW QUESTION 33

In this section, you'll see one or more sets of questions with the same scenario and problem Each

question presents a unique solution to the problem, and you must determine whether the solution meets the stated goals. Any of the solutions might solve the problem. It is also possible that none of the solutions solve the problem.

Once you answer a question in this section, you will NOT be able to return to it. As a result, these questions will not appear in the review screen

Note: This question is part of a series of questions that present the same scenario. Each question in the series contains a unique solution. Determine whether the solution meets the stated goals.

Your network contains an Active Directory domain named contoso.com. The domain contains a DNS server named Server1. All client computers run Windows 10. On Server1, you have the following zone configuration

ZoneName	ZoneType	IsAutoCreated	IsDsIntegrated	IsReverseLookupZone	IsSign
-----	-----	-----	-----	-----	-----
_msdcs.contoso.com	Primary	False	True	False	False
adatum.com	Forwarder	False	False	False	
contoso.com	Primary	False	True	False	False
fabrikam.com	Primary	False	False	False	True
TrustAnchors	Primary	False	True	False	False

You have the following subnets defined on Server1.

Name	IPv4Subnet	IPv6Subnet
----	-----	-----
Subnet1	{10.0.0.0/24}	
Subnet2	{10.0.1.0/24}	
Subnet3	{192.168.15.0/24}	
Subnet4	{172.16.1.0/24}	

You need to prevent Server1 from resolving queries from DNS clients located on Subnet4 Server1

must resolve queries from all other DNS clients

Solution From Windows PowerShell on Setver1, you run the Add-DnsServerTrustAnchor cmdtel Does this meet the goal?

- A. Yes
- B. No

Answer: A

NEW QUESTION 34

Note: This question is part of a series of questions that present the same scenario. Each question in the series contains a unique solution that might meet the stated goals. Some question sets might

have more than one correct solution, while others might not have a correct solution.

After you answer a question in this section, you will NOT be able to return to it. As a result, these questions will not appear in the review screen.

You are a server administrator at a company named Contoso, Ltd.

Contoso has a Windows Server 2016 Hyper-V environment configured as shown in the following table.

Hyper-V host name	Configuration	Virtual switch name
Host1	- Uses an Intel processor - Is a member of a SAN named SAN1	Switch1
Host2	- Uses an AMD processor - Has local storage only	Switch2
Host3	- Uses an Intel processor - Is a member of a SAN named SAN1	Switch1
Host4	- Uses an Intel processor - Has local storage only	Switch2

All of the virtual switches are of the external type.

You need to ensure that you can move virtual machines between the hosts without causing the virtual machines to disconnect from the network.

Solution: You implement live migration by using Host3 and Host4. Does this meet the goal?

- A. Yes
- B. No

Answer: A

NEW QUESTION 36

Note: This question is part of a series of questions that present the same scenario. Each question in

the series contains a unique solution that might meet the stated goals. Some question sets might have more than one correct solution, white others might not have a correct solution.

You have a server named Server1 that runs Windows Server 2016. Server1 hosts a line-of-business application named App1. App1 has a memory leak that occasionally causes the application to consume an excessive amount of memory.

You need to log an event in the Application event log whenever App1 consume more than 4 GB of memory.
Solution: You create a system configuration information data collector. Does this meet the goal?

- A. Yes
- B. No

Answer: B

NEW QUESTION 41

HOTSPOT

You implement a Windows Server 2016 failover cluster named Cluster1 as a highly available file server.
You run the Get-Cluster cmdlet and receive the following output.

```
AddEvictDelay : 60
AdministrativeAccessPoint : Dns
AutoAssignNodeSite : 0
AutoBalancerMode : 2
AutoBalancerLevel : 1
ClusSvcHangTimeout : 135
ClusSvcRegroupStageTimeout : 5
ClusSvcRegroupTickInMilliseconds : 300
ClusterEnforcedAntiAffinity : 0
ClusterFunctionalLevel : 9
ClusterUpgradeVersion : 7
ClusterGroupWaitDelay : 120
ClusterLogLevel : 3
ClusterLogSize : 300
DatabaseReadWriteMode : 0
DefaultNetworkRole : 3
Description :
Domain : contoso.com
EnableSharedVolumes : Enabled
FixQuorum : 0
Id : ec6121be-f816-426b-b550-72cafb943f1b
Name : cluster1
```

Use the drop-down menus to select the answer choice that completes each statement based on the information presented in the graphic.

Answer Area

You can perform Cluster-Aware Updating (CAU) in [answer choice].

self-updating mode only
remote-updating mode only
remote-updating mode and self-updating mode

You can use [answer choice] to create a file share in Cluster1.

DFS Management
Failover Cluster Manager
File Server Resource Manager
Server Manager

- A. Mastered
- B. Not Mastered

Answer: A

Explanation:

Answer Area

You can perform Cluster-Aware Updating (CAU) in **[answer choice]**.

▼

self-updating mode only

remote-updating mode only

remote-updating mode and self-updating mode

You can use **[answer choice]** to create a file share in Cluster1.

▼

DFS Management

Failover Cluster Manager

File Server Resource Manager

Server Manager

NEW QUESTION 45

You have a Windows Server 2016 Hyper-V failover cluster that contains two nodes named Node1 and Node2. On Node1, you create a virtual machine named VM01 by using Hyper-V Manager. You need to configure VM01 to move to Node2 automatically if Node1 becomes unavailable. What should you do?

- A. From Failover Cluster manager, run the configure Role actions.
- B. From Hyper-V Manager, click VM01 and click Enable Replication.
- C. From Hyper-V Manager Click Node 1 and the modify the hyper-V settings.
- D. From Windows Powershell, run the Enable-VMReplication cmdlet.

Answer: A

Explanation:

<http://windowsitpro.com/hyper-v/make-vm-highly-available-windows-server-2012>

NEW QUESTION 49

DRAG DROP

Note: This question is part of a series of questions that use the same scenario. For your convenience, the scenario is repeated in each question. Each question presents a different goal and answer choices, but the text of the scenario is exactly the same in each question in this series. Your network contains an Active Directory domain named contoso.com. The functional level of the forest and the domain is Windows Server 2008 R2. All servers in the domain run Windows Server 2016 Standard. The domain contains 300 client computers that run either Windows 8.1 or Windows 10. The domain contains nine servers that are configured as shown in the following table.

Name	Configuration	Planned changes
Server1	Domain controller	None
Server2	File server	Run Failover Clustering and Storage Spaces Direct
Server3	File server	Run Failover Clustering and Storage Spaces Direct
Server4	Hyper-V host	Run shielded virtual machines
Server5	Hyper-V host	None
Server6	Member server	Run Active Directory Federation Services (AD FS)
VM1	Virtual machine hosted on Server5	None
VM2	Virtual machine hosted on Server5	None
VM3	Virtual machine hosted on Server5	None

The virtual machines are configured as follows:

- Each virtual machine has one virtual network adapter.
- VM1 and VM2 are part of a Network Load Balancing (NLB) cluster.
- All of the servers on the network can communicate with all of the virtual machines.

You need to install the correct edition of Windows Server 2016 to support the planned changes for Server2, Server3, Server4, and Server5.

Which edition or editions should you choose for each server? To answer, drag the appropriate editions to the correct servers. Each edition may be used once, more than once, or not at all. You may need to drag the split bar between panes or scroll to view content.

Editions		Answer Area	
<div>Standard only</div>	<div>Datacenter only</div>	Server2:	<div>Edition</div>
<div>Standard or Datacenter</div>		Server3:	<div>Edition</div>
		Server4:	<div>Edition</div>
		Server6:	<div>Edition</div>

- A. Mastered
- B. Not Mastered

Answer: A

Explanation:

Editions		Answer Area	
<div>Standard only</div>	<div>Datacenter only</div>	Server2:	<div>Datacenter only</div>
<div>Standard or Datacenter</div>		Server3:	<div>Datacenter only</div>
		Server4:	<div>Datacenter only</div>
		Server6:	<div>Standard or Datacenter</div>

NEW QUESTION 50

Note This question is part of a series of questions that use the same scenario. For your convenience, the scenario is repeated in each question. Each question presents a different goal and answer choices, but the text of the scenario is exactly the same in each question in this series.

Start of Repeated Scenario:

A company named Contoso, Ltd. has several servers that run Windows Server 2016 Contoso has a Hyper V environment that uses failover clustering and Windows Server Update Services (WSUS). The environment contains several Windows containers and several virtual machines. The WSUS deployment contains one upstream server that is located on the company's perimeter network and several downstream servers located on the internal network, A firewall separates the upstream server from the downstream servers.

You plan to deploy a human resources application to a new server named HRServer5. HRServer5 contains a FAT32-formatted data volume.

The CIO of Contoso identifies the following requirements for the company's IT department:

- Deploy failover cluster to two new virtual machines.
- Store all application databases by using Encrypted File System (EFS).
- Ensure that each Windows container has a dedicated IP address assigned by a DHCP server
- Produce a report that lists the processor time used by all of the processes on a server named Server 1 for five hour.

Encrypt all communication between the internal network and the perimeter network, including all WSUS communications.

- Automatically load balance the virtual machines hosted in the Hyper-V cluster when processor utilization exceeds 70 percent.

End of Repeated Scenario.

You need to modify the Hyper V cluster to meet the load balancing requirement for the virtual machine. Which command should you run?

- A. (Get-ClusterParameter) AutoBalanecrMode=2
- B. (Get-Cluster).AutoBalanecrMode=2
- C. (Get-ClusterParameter).AutoBalancerLevel=2
- D. (Get-Cluster).AutoBalancerLevel=2

Answer: D

NEW QUESTION 52

You have a server named Server1 that runs Windows Server 2016. You need to install the DNS Server role on Server1. What should you run?

- A. the dns.exe command
- B. the optionalfcaturcs.exe command
- C. the Install-Package cmdlet
- D. the Enable-WindowsOptionalFeature cmdlet

Answer: D

NEW QUESTION 54

You have a server named Server 1 that runs Windows Server 2016 and has the Hyper-V server role installed. On Server1, you plan to create a virtual machine named VM1. You need to ensure that you can start VM1 from the network. What are two possible ways to achieve the goal? Each correct answer presents a complete solution.

- A. Create a generation 2 virtual machine.
- B. Create a generation 1 virtual machine and run the `Enable-NetAdapterPackageDirectcmdlet`.
- C. Create a generation 1 virtual machine that has a legacy network adapter.
- D. Create a generation 1 virtual machine and configure a single root I/O virtualization (SRV-IO) interface for the network adapter.

Answer: AC

NEW QUESTION 57

You have a Hyper-V host that runs Windows Server 2016. The host contains a virtual machine named VM1. VM1 has resource metering enabled. You need to use resource metering to track the amount of network traffic that VM1 sends to the 10.0.0.0/8 network. Which cmdlet should you run?

- A. `Add-VMNetworkAdapteiAd`
- B. `Set-VMNetworkAdapter`
- C. `New-VMResourcePool`
- D. `Set-VMNetworkAdapterRoutingDomamMapping`

Answer: A

NEW QUESTION 58

After you answer a question in this section, you will NOT be able to return to it. As a result, these questions will not appear in the review screen.

You have a server named Server1 that runs Windows Server 2016.

You plan to use Windows Server Backup to back up all of the data on Server1. You create a new volume on Server1.

You need to ensure that the new volume can be used as a backup target. The backup target must support incremental backups.

Solution: You mount the volume to C:\Backup, and you format the volume by using FAT32. Does this meet the goal?

- A. Yes
- B. No

Answer: A

NEW QUESTION 60

Your network contains an Active Directory domain. The domain contains a new file server named Server1 that runs a Server Core installation of Windows Server 2016.

Server1 has an ReFS-formatted volume D: and NTFS-formatted volume E: The volumes do not contain any data.

You install the Data Deduplication role service on Server1.

You need to implement Data Deduplication for volumes on D: and E:.

Solution: From Windows PowerShell, you run `Format-Volume E: -FileSystem ReFS` and `Enable- DeDupVolume -Volume D:,E:.`

Does this meet the goal?

- A. Yes
- B. No

Answer: A

Explanation:

References: <https://docs.microsoft.com/en-us/windows-server/storage/data- deduplication/understand>

NEW QUESTION 61

Your network contains an Active Directory domain. The domain contains a new file server named Server1 that runs a Server Core installation of Windows Server 2016.

Server1 has an ReFS-formatted volume D: and NTFS-formatted volume E: The volumes do not contain any data.

You install the Data Deduplication role service on Server1.

You need to implement Data Deduplication for volumes on D: and E:.

Solution: From Windows PowerShell, you run `Format-Volume D: -FileSystem EXFat` and `Enable- DeDupVolume -Volume D:,E:.`

Does this meet the goal?

- A. Yes
- B. No

Answer: A

NEW QUESTION 66

DRAG DROP

You are preparing an image of Windows Server 2016.

The image is missing the driver foe a network adapter that is required in your environment. You need to ensure that the image contains the network adapter driver.

Which three cmdlets should you use in sequence? To answer, move the appropriate cmdlets from the list of cmdlets to the answer area and arrange them m the correct order.

Cmdlets

- Mount-WindowsImage
- Add-WindowsDriver
- Get-WindowsImage
- Save-WindowsImage
- Add-WindowsFeature
- Dismount-WindowsImage
- Optimize-WindowsImage

Answer Area

- 1
- 2
- 3

- A. Mastered
B. Not Mastered

Answer: A

Explanation:

Cmdlets

- Mount-WindowsImage
- Get-WindowsImage
- Save-WindowsImage
- Add-WindowsFeature

Answer Area

- 1

Add-WindowsDriver
- 2

Optimize-WindowsImage
- 3

Dismount-WindowsImage

NEW QUESTION 68

You have Nano Setver image named Disk1 .vhdx. You mount Disk1 .vhdx.
You need to add a folder that contains several files to the image. Which tool or cmdlet you should use?

- A. Copy-Item
B. Add-WindowsImage
C. Add-WindowsPackage
D. Edit-NanoServerImage

Answer: A

NEW QUESTION 70

HOTSPOT

You have a Hyper-V host named Server1 that runs Windows Server 2016.

You deploy a virtual machine named VM1 to Server1. VM1 runs Windows Server 2016. You need to ensure that you can install the Hyper-V server role on VM1.

Which command should you run? To answer, select the appropriate options in the answer area.

Answer Area

Enable-VMIntegrationService
 Set-VM
 Set-VMBios
 Set-VMFirmware
 Set-VMHost
 Set-VMProcessor

SERVER1 - EnableEnhancedSessionMode \$true
 SERVER1 - EnableSecureBoot on
 SERVER1 - ExposeVirtualizationExtensions \$true
 VM1 - EnableEnhancedSessionMode \$true
 VM1 - EnableSecureBoot on
 VM1 - ExposeVirtualizationExtensions \$true

- A. Mastered
- B. Not Mastered

Answer: A

Explanation:

References:

<https://docs.microsoft.com/en-us/virtualization/hyper-v-on-windows/user-guide/nested-virtualization>

NEW QUESTION 75

Note: This question is part of a series of questions that use the same or similar answer choices. An answer choice may be correct for more than one question in the series. Each question is independent of the other questions in this series. Information and details provided in a question apply only to that question.

You have two servers named Server1 and Server2 that run Windows Server 2016. Server1 and Server2 have the Hyper-V server role installed and are nodes in a failover cluster.

On Server1, an administrator creates a virtual machine named VM1. You need to configure VM1 for high availability.

Which tool should you use?

- A. the clussvc.exe command
- B. the cluster.exe command
- C. the Computer Management snap-in
- D. the configurehyperv.exe command
- E. the Disk Management snap-in
- F. the Failover Cluster Manager snap-in
- G. the Hyper-V Manager snap-in
- H. the Server Manager app

Answer: F

Explanation:

References:

<http://windowsitpro.com/hyper-v/make-vm-highly-available-windows-server-2012>

NEW QUESTION 77

You create a Nano server image named Nano1.vhdx by using the New-NanoServerImage cmdlet. You attach Nano1.vhdx to a Generation 1 virtual machine named Nano1.

When you start Nano1, you get the following error message: "Boot failure. Reboot and select proper Boot device or Insert Boot Media in selected Boot device"

You need to successfully start Nano server. What should you do?

- A. Attach Nano1.vhdx to a SCSIcontroller.
- B. Recreate Nano1 as a Generation 2 virtual machine.
- C. Increase the memory of Nano1 to 512 Mb.
- D. Modify the BIOS settings of Nano1.

Answer: B

Explanation:

A Generation 1 VM cannot boot from a vhdx disk; only a Generation 2 VM can boot from an vhdx disk.

NEW QUESTION 78

HOTSPOT

Your company has a main office and a branch office. The two offices connect to each other by using a WAN link.

Your network contains an Active Directory forest named contoso.com. The forest contains a domain controller named DC1. All of the domain controllers are

located in the main office.

You install a read-only domain controller (RODC) named RODC1 in the branch office.

You create a user account for a new user named User1. You add User1 to the Allowed RODC Password Replication Group. User1 starts work on Monday.

You are notified that the WAN link will be down for maintenance on Monday. You need to ensure that User1 can log on in the branch office site on Monday.

Which command should you run? To answer, select the appropriate options in the answer area.

Answer Area

▼	▼
clonepr	/prp
ldifde	/replicate
repadmin	/rodcpwdrepl
replmon	/syncall

rodcl.fabrikam.com dcl.fabrikam.com "cn=user1,ou=users,dc=fabrikam,DC=com"

- A. Mastered
- B. Not Mastered

Answer: A

Explanation:

References:

[https://technet.microsoft.com/en-us/library/cc742095\(v=ws.11\).aspx](https://technet.microsoft.com/en-us/library/cc742095(v=ws.11).aspx)

NEW QUESTION 81

HOTSPOT

Your network contains an Active Directory forest named contoso.com. You need to add a new domain named fabrikam.com to the forest.

What command should you run? To answer, select the appropriate options in the answer area.

Answer Area

▼	-DomainType	▼
Install-ADDSDomain		TreeDomain
Install-ADDSDomainController		ChildDomain
Install-ADDSTForest		

-InstallDns:\$true -NewDomainName fabrikam.com -ParentDomainName contoso.com

- A. Mastered
- B. Not Mastered

Answer: A

Explanation:

Answer Area

▼	-DomainType	▼
Install-ADDSDomain		TreeDomain
Install-ADDSDomainController		ChildDomain
Install-ADDSTForest		

-InstallDns:\$true -NewDomainName fabrikam.com -ParentDomainName contoso.com

Explanation:

References:

[https://technet.microsoft.com/en-us/library/hh974722\(v=wps.630\).aspx](https://technet.microsoft.com/en-us/library/hh974722(v=wps.630).aspx)

NEW QUESTION 83

Note: This question is part of a series of questions that present the same scenario. Each question in the series contains a unique solution that might meet the stated goals. Some question sets might have more than one correct solution, while others might not have a correct solution.
After your answer a question in this section, you will NOT be able to return to it. As a result, these questions will not appear in the review screen.
Your network contains an Active Directory forest named contoso.com. You need to identify which server is the schema master.
Solution: From Windows PowerShell, you run Get-ADDomainController -Discover -Service 2. Does this meet the goal?

- A. Yes
- B. No

Answer: B

Explanation:

References:

<https://blogs.technet.microsoft.com/mempson/2007/11/08/how-to-find-out-who-has-your-fsmo-roles/>

NEW QUESTION 86

Note: This question is part of a series of questions that present the same scenario. Each question in the series contains a unique solution that might meet the stated goals. Some question sets might have more than one correct solution, while others might not have a correct solution.
After your answer a question in this section, you will NOT be able to return to it. As a result, these questions will not appear in the review screen.
Your network contains an Active Directory forest named contoso.com. You need to identify which server is the schema master.
Solution: From a command prompt, you run netdom query fsmo. Does this meet the goal?

- A. Yes
- B. No

Answer: A

Explanation:

References: <https://blogs.technet.microsoft.com/mempson/2007/11/08/how-to-find-out-who-has-your-fsmo-roles/>

NEW QUESTION 87

Your Network contains one Active Directory domain named contoso.com. You pilot DirectAccess on the network.
During the pilot deployment, you enable DirectAccess only for a group Contoso\Test Computers. Once the pilot is complete, you need to enable DirectAccess for all the client computers in the domain.
What should you do?

- A. From Windows PowerShell, run the Set-DAClient cmdlet.
- B. From Windows PowerShell, run the Set-DirectAccess cmdlet.
- C. From Active Directory Users and Computers, modify the membership of the Windows Authorization Access Group.
- D. From Group Policy Management, modify the security filtering of an object named Direct Access Client Setting Group Policy.

Answer: D

NEW QUESTION 91

A company named Contoso, Ltd has five Hyper-V hosts that are configured as shown In the following table.

Hyper-V host name	Configuration
Server1	Windows Sever 2012 R2 and an Intel Xeon E7 processor
Server2	Windows Sever 2012 R2 and an Intel i7 processor
Server3	Windows Sever 2016 and an Intel i7 processor
Server4	Windows Sever 2016 and an AMD Opteron processor
Server5	Windows Sever 2012 R2 and an Intel Xeon E7 processor

What are two valid live migration scenarios for virtual machines in your environment? Each correct answer presents a complete solution.

- A. from Server4 to Server5
- B. from Server1 to Server5
- C. from Server3 to Server4
- D. from Server2 to Server3

Answer: BD

NEW QUESTION 92

You have a Hyper-V host named Server1 that runs Windows Server 2016. Server1 hosts a virtual machine named VM1. VM1 is in a workgroup. VM1 is currently in a running state.
You need to create 10 copies of VM1 on Server1 in the least amount of time possible. Which cmdlets should you use?

- A. Stop-VM, and then Import-VM
- B. Export-VM, and then Import-VM
- C. Checkpoint-VM, and then New-VM
- D. Copy-VMFile, and then New-VM

Answer: B

NEW QUESTION 95

You have a server named Server1 that runs Windows Server 2016. Server1 has four SCSI disks and a storage pool named Pool1 that contains three disks. You create a virtual disk named Disk 1 that uses a mirrored layout. You create a partition named Partition1 that uses all of the available space on Disk 1. You need to extend Partition1. What should you do first?

- A. From Windows PowerShell, run the Resize-VirtualDisk cmdlet.
- B. From Windows PowerShell, run the Resize-StorageTier cmdlet.
- C. From Windows PowerShell, run the Expand-IscsiVirtualDisk cmdlet.
- D. From Disk Management, modify the properties of Partition1.

Answer: A

NEW QUESTION 98

Note: This question is part of a series of questions that use the same scenario. For your convenience, the scenario is repeated in each question. Each question presents a different goal and answer choices, but the text of the scenario is exactly the same in each question in this series.

Start of repeated scenario

Your network contains an Active Directory domain named contoso.com. The functional level of the forest and the domain is Windows Server 2008 R2. All servers in the domain run Windows Server 2016 Standard. The domain contains 300 client computers that run either Windows 8.1 or Windows 10.

The domain contains nine servers that are configured as shown in the following table.

Server name	Configuration	Planned changes
Server1	Domain controller	None
Server2	File server	Run Failover Clustering and Storage Spaces Direct
Server3	File server	Run Failover Clustering and Storage Spaces Direct
Server4	Hyper-V host	Run shielded virtual machines
Server5	Hyper-V host	None
Server6	Member server	Run Active Directory Federation Services (AD FS)
VM1	Virtual machine hosted on Server 5	None
VM2	Virtual machine hosted on Server 5	None
VM3	Virtual machine hosted on Server 5	None

The virtual machines are configured as follows:

- Each virtual machine has one virtual network adapter.
- VM1 and VM2 are part of a Network Load Balancing (NLB) cluster.
- All of the servers on the network can communicate with all of the virtual machines. End of repeated scenario.

You create a new NLB cluster that contains VM3.

You need to ensure that VM2 can remain in the original cluster and be added to the new cluster. What should you do first?

- A. Add a new virtual network adapter to VM2.
- B. Install the Web Application Proxy server role on VM2 and VM3.
- C. Modify the default port rule.
- D. Change the cluster operation mode.

Answer: A

NEW QUESTION 100

DRAG DROP

You have a server named Server1 that runs Windows Server 2016.

On Server1 you use the Basic template to create a new Data Collector Set named CollectorSet1.

You need to configure data collection for the performance counters. The configuration must support the following requirements:

Data collection must run on a schedule.

Data collection must stop if there is less than 1 GB of free disk space.

What should you modify to meet each requirement? To answer, drag the appropriate settings to the correct requirements. Each setting may be used once, more than once, or not at all. You may need to drag the Split bar between panes or scroll to view content.

Settings to Modify

The Data Manager settings of CollectorSet1

The properties of the performance counter data collector

The properties of CollectorSet1

Answer Area

Data collection must run on a schedule:

Setting to modify

Data collection must stop if there is less than 1 GB of free disk space:

Setting to modify

- A. Mastered
- B. Not Mastered

Answer: A

Explanation:

Settings to Modify

The Data Manager settings of CollectorSet1

Data collection must run on a schedule:

The properties of CollectorSet1

Data collection must stop if there is less than 1 GB of free disk space:

The properties of the performance counter data collector

NEW QUESTION 104

Your IT company is constantly changing, with new users coming and going throughout the year. One of your common tasks requires the deletion of user accounts for employees who have left the company. Which command can be used to delete user accounts?

- A. LDIFDE
- B. Dsmmod
- C. Dspromo
- D. Netsh

Answer: A

NEW QUESTION 108

You want to boot a Linux Operating System with the Secure Boot option enabled in a virtual machine. This will be the first time you boot the OS. What must you do?

- A. Set the -BootOrder to HardDiskDrive
- B. Configure the virtual machine to use the Microsoft UEFI Certificate Authority
- C. You can't enable Secure Boot with Linux
- D. Set -EnableSecureBoot without specifying a template

Answer: B

Explanation:

Linux operating systems running on newer generation virtual machines can boot with the Secure Boot option enabled. Before you boot the virtual machine for the first time, you must configure the virtual machine to use the Microsoft UEFI Certificate Authority. You can do this from Hyper-V Manager, Virtual Machine Manager, or an elevated Windows Powershell session.

NEW QUESTION 112

You have a container host named Server1 that runs Windows Server 2016. You need to start a Hyper-V container on Server1. Which parameter should you use with the docker run command?

- A. --runtime
- B. --entrypoint
- C. --privileged

- D. --isolation
- E. --expose

Answer: D

Explanation:

<https://docs.microsoft.com/en-us/virtualization/windowscontainers/deploy-containers/system-requirements>

NEW QUESTION 115

You have Hyper-V virtual machines that run 50 web servers, 10 Microsoft SQL Server servers. 10 file servers, and eight domain controllers. You need to implement a backup strategy that meets the following requirements:

- *Backs up all servers
- *Centralizes backup management
- *Performs application-level backups
- *Provides the ability to perform bare metal recovery What should you use?

- A. Microsoft Azure VM Backup
- B. Microsoft Azure Backup Agent
- C. Windows Server Backup
- D. Microsoft Azure Backup Server

Answer: D

NEW QUESTION 117

You have two Hyper-V hosts named Server1 and Server2 that run Windows Server 2016. Server1 hosts a virtual machine named VM1 that is in a Running state.

On Server1, you export VM1 and then you import VM1 on Server2. What is the current state of VM1 on Server2?

- A. Off
- B. Running
- C. Paused
- D. Saved

Answer: B

NEW QUESTION 122

You have three Hyper-V hosts named Server1, Server2, and Server3 that run Windows Server 2016. The servers are nodes in a failover cluster. The failover cluster contains two virtual machines named VM1 and VM2. The roles for VM1 and VM2 have the following configurations.

```
PS C:\> Get-ClusterGroup vm1,vm2 | fl *
```

```
AntiAffinityClassNames      : {}
AutoFailbackType            : 0
ColdStartSetting            : 0
Cluster                     : Cluster1
DefaultOwner                : 1
Description                  :
GroupType                   : VirtualMachine
FailoverPeriod              : 6
FailoverThreshold           : 4294967295
FailbackWindowEnd           : 4294967295
FailbackWindowStart        : 4294967295
IsCoreGroup                 : False
Name                        : vm1
OwnerNode                   : Server1
PersistentState             : 1
PreferredSite               : {}
Priority                    : 0
ReliliencyPeriod            : 429467295
State                       : Online
StatusInformation           : 0
Id                          : d02c87d1-8alc-4fffb-b87d-adf059416f25
```

```
AntiAffinityClassNames      : {}
AutoFailbackType            : 0
ColdStartSetting            : 0
Cluster                     : Cluster1
DefaultOwner                : 1
Description                  :
GroupType                   : VirtualMachine
FailoverPeriod              : 6
FailoverThreshold           : 4294967295
FailbackWindowEnd           : 4294967295
FailbackWindowStart        : 4294967295
IsCoreGroup                 : False
Name                        : vm2
OwnerNode                   : Server1
PersistentState             : 1
PreferredSite               : {}
Priority                    : 3000
ResiliencyPeriod            : 4294967295
State                       : Online
StatusInformation           : 0
Id                          : ab38e657-bfcf-463d-a88b-d4e99aff4ef1
```

All of the nodes in the failover cluster have sufficient resources to run VM1 and VM2 concurrently. VM1 and VM2 fail over to Server3. What is the state of each virtual machine after the failover?

- A. Both VM1 and VM2 are stopped.
- B. Both VM1 and VM2 are running.
- C. VM1 is stopped and VM2 is running.
- D. VM1 is stopped and VM2 is paused.

Answer: C

Explanation:

References:

[https://msdn.microsoft.com/en-us/library/jj151956\(v=vs.85\).aspx](https://msdn.microsoft.com/en-us/library/jj151956(v=vs.85).aspx)

NEW QUESTION 124

HOTSPOT
You have a Windows Server 2016 failover cluster that has a cluster network named ClusterNetwork1. You need to ensure that ClusterNetwork1 is enabled for cluster communication only.
What command should you run? To answer, select the appropriate options in the answer area.

Answer Area

(

▼

Get-ClusterNetwork
Get-ClusterResource
Set-ClusterParameter
Update-ClusterIPResource

ClusterNetwork1).

▼

ID
Metric
Role
State

=1

- A. Mastered
- B. Not Mastered

Answer: A

Explanation:

Answer Area

(

▼

Get-ClusterNetwork
Get-ClusterResource
Set-ClusterParameter
Update-ClusterIPResource

ClusterNetwork1).

▼

ID
Metric
Role
State

=1

NEW QUESTION 126

HOTSPOT
You plan to deploy three servers named Server1, Server2, and Server3 that will run Windows Server 2016. The servers will have the following disk configurations:
Server1 will have a C: drive of 2 TB.
Server2 will have two disks. The C: drive will be 2 TB. The D: drive will be 1TB. D: must support file system-based compression.
Server3 will have two disks. The C: drive will be 2 TB. The D: drive will be 1TB and must support file- system based quotas.
Which file system can you use for each drive? To answer, select the appropriate options in the answer area.

Answer Area

C: on all servers:

▼

NTFS only
ReFS only
Either NTFS or ReFS

D: on Server2:

▼

NTFS only
ReFS only
Either NTFS or ReFS

D: on Server3:

▼

NTFS only
ReFS only
Either NTFS or ReFS

- A. Mastered
- B. Not Mastered

Answer: A

Explanation:

Answer Area

C: on all servers:

▼

NTFS only

ReFS only

Either NTFS or ReFS

D: on Server2:

▼

NTFS only

ReFS only

Either NTFS or ReFS

D: on Server3:

▼

NTFS only

ReFS only

Either NTFS or ReFS

NEW QUESTION 128

HOTSPOT

Note: This question is part of a series of questions that use the same scenario. For your convenience, the scenario is repeated in each question. Each question presents a different goal and answer choices, but the text of the scenario is exactly the same in each question in this series.

Your network contains an Active Directory domain named contoso.com. The functional level of the forest and the domain is Windows Server 2008 R2. All servers in the domain run Windows Server 2016 Standard. The domain contains 300 client computers that run either Windows 8.1 or Windows 10.

The domain contains nine servers that are configured as shown in the following table.

Name	Configuration	Planned changes
Server1	Domain controller	None
Server2	File server	Run Failover Clustering and Storage Spaces Direct
Server3	File server	Run Failover Clustering and Storage Spaces Direct
Server4	Hyper-V host	Run shielded virtual machines
Server5	Hyper-V host	None
Server6	Member server	Run Active Directory Federation Services (AD FS)
VM1	Virtual machine hosted on Server5	None
VM2	Virtual machine hosted on Server5	None
VM3	Virtual machine hosted on Server5	None

The virtual machines are configured as follows:

Each virtual machine has one virtual network adapter.

VM1 and VM2 are part of a Network Load Balancing (NLB) cluster.

All of the servers on the network can communicate with all of the virtual machines. For VM1 and VM2, you plan to use live migration between Server4 and Server5.

You need to ensure that when the virtual machines migrate, they maintain connectivity to the network.

Which virtual switch names and connection types should you use on each server? To answer, select the appropriate options in the answer area.

Answer Area

Virtual switch connection type on Server4:

▼

External network

Internal network

Private network

Virtual switch connection type on Server5:

▼

External network

Internal network

Private network

Virtual switch name on Server4:

▼

External on Server4

Network switch

Server4

Virtual switch name on Server5:

▼

External on Server5

Network switch

Server5

- A. Mastered
- B. Not Mastered

Answer: A

Explanation:

Answer Area

Virtual switch connection type on Server4:

▼

External network

Internal network

Private network

Virtual switch connection type on Server5:

▼

External network

Internal network

Private network

Virtual switch name on Server4:

▼

External on Server4

Network switch

Server4

Virtual switch name on Server5:

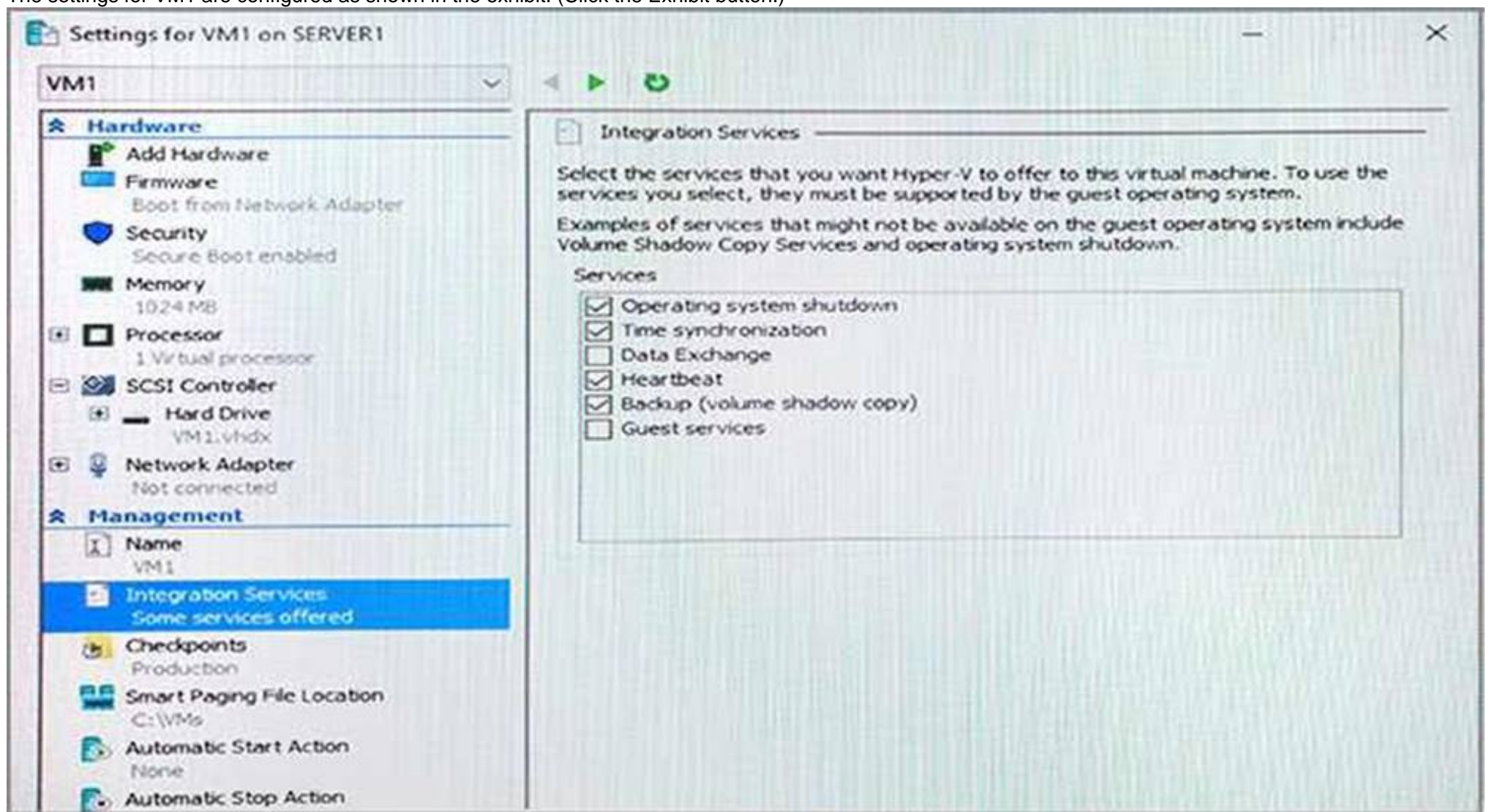
▼

External on Server5

Network switch

Server5

Note: This question is part of a series of questions that present the same scenario. Each question in the series contains a unique solution that might meet the stated goals. Some question sets might have more than one correct solution, while others might not have a correct solution. After you answer a question in this section, you will NOT be able to return to it. As a result, these questions will not appear in the review screen. You have a Hyper-V host named Server1 that hosts a virtual machine named VM1. Server1 and VM1 run Windows Server 2016. The settings for VM1 are configured as shown in the exhibit. (Click the Exhibit button.)



You need to ensure that you can use the Copy-VMFile cmdlet on Server1 to copy files from VM1. Solution: You connect VM1 to an internal virtual switch. Does this meet the goal?

- A. Yes
- B. No

Answer: B

NEW QUESTION 136

You have Nano Server image named Disk1.vhdx.

You mount Disk1.vhdx.

You need to add a folder that contains several files to the image. Which tool or cmdlet you should use?

- A. File Explore.
- B. Add-Windows Image
- C. Nano Server Image Builder
- D. Server Manager

Answer: D

NEW QUESTION 137

Note This question is part of a series of questions that use the same scenario. For your convenience, the scenario is repeated in each question. Each question presents a different goal and answer choices, but the text of the scenario is exactly the same in each question in this series.

Start of Repeated Scenario:

A company named Contoso, Ltd. has several servers that run Windows Server 2016 Contoso has a Hyper V environment that uses failover clustering and Windows Server Update Services (WSUS). The environment contains several Windows containers and several virtual machines.

The WSUS deployment contains one upstream server that is located on the company's perimeter network and several downstream servers located on the internal network, A firewall separates the upstream server from the downstream servers.

You plan to deploy a human resources application to a new server named HRServer5. HRServer5 contains a FAT32-formatted data volume.

The CIO of Contoso identifies the following requirements for the company's IT department:

- Deploy failover cluster to two new virtual machines.
 - Store all application databases by using Encrypted File System (EFS).
 - Ensure that each Windows container has a dedicated IP address assigned by a DHCP server
 - Produce a report that lists the processor time used by all of the processes on a server named Server 1 for five hour.
- Encrypt all communication between the internal network and the perimeter network, including all WSUS communications.
- Automatically load balance the virtual machines hosted in the Hyper-V cluster when processor utilization exceeds 70 percent.

End of Repeated Scenario.

You need to modify the Hyper V cluster to meet the load balancing requirement for the virtual machine. Which command should you run?

- A. network address translation (NAT)
- B. I2bridge
- C. I2tunnel

D. transparent

Answer: A

NEW QUESTION 141

HOTSPOT

You have a server named Server1 that runs Windows Server 2016.
On Server1, you have a custom image of Windows Server 2016 Standard in a file named Image1.wim. The image is mounted to C:\Folder1.
You discover corrupted files in the WinSxS folder of the mounted image.
From the Windows Server 2016 installation media, you mount an image of Windows Server 2016 Standard from Install.wim to C:\Folder2.
You need to repair the corrupted image.
Which command should you run? To answer, select the appropriate options in the answer area. NOTE: Each correct selection is worth one point.

Answer Area

Dism /Cleanup-Image /Image:

C:\Folder1

C:\Folder1\image1.wim

C:\Folder2\install.wim:1

C:\Folder2\Windows

/CheckIntegrity

/RestoreHealth

/ScanHealth

/StartComponentCleanup

/Source:

C:\Folder1

C:\Folder1\image1.wim

C:\Folder2\install.wim:1

C:\Folder2\Windows

- A. Mastered
- B. Not Mastered

Answer: A

Explanation:

References: <https://docs.microsoft.com/en-us/windows-hardware/manufacture/desktop/repair-a- windows-image>

NEW QUESTION 143

You have two servers named Server1 and Server 2 that run Windows Server 2016.
Server 1 and Server 2 are nodes in a Network Load Balancing (NLB) cluster. The Web Sever server role is installed on each node.
Users report that when they submit web form data, sometimes the data is not stored, and they must full in the form again.
You need to resolve the issue. The solution must ensure that connections are load balanced between Server 1 Server 2.
What should you do in the NLB cluster?

- A. Modify the existing port rules.
- B. Modify the Cluster operation mode.
- C. Add the Microsoft Load Balancing/Failover Provider service to all of the network adapters.
- D. Add an IP address.

Answer: B

NEW QUESTION 144

You have a Windows Server 2016 failover cluster named Ousted that contains three nodes named
Server 1, Server 2, and Server 3. Each node hosts several virtual machines. the virtual machines are configured to fail over to another node in Ousted if the
hosting node tails.
You need to ensure that it if the Cluster service tails on one of the nodes, the virtual machine of that node will fail over immediately.
Which setting should you configure?

- A. failureConditionLevel
- B. QuarantineDuration
- C. Resiliency Period
- D. ResiliencyLevel

Answer: B

NEW QUESTION 145

HOTSPOT

You have a server named Server1 that runs Windows Server 2016. You create a storage pool named Pool1. Pool1 contains three disks.

You need to create a two-way mirror storage space from the disks in Pool1.

Which command should you run? To answer, select the appropriate options in the answer area. NOTE: Each correct selection is worth one point.

Answer Area

<div><div></div><div>New-StorageSunsystemVirtualDisk New-VHD New-VirtualDisk New-Volume</div></div>	<div><div></div><div>-StoragePoolFirendlyName Pool1 -FirendlyName Space1- -UseMaximumSize -ResiliencySettingName Mirror</div></div>
<div><div>-NumberofDataCopies</div><div><div></div><div>1 2 3</div></div></div>	<div><div>-NumberOfColumns-</div><div><div></div><div>1 2 3</div></div></div>

- A. Mastered
- B. Not Mastered

Answer: A

Explanation:

References: <https://charbelnemnom.com/2014/09/step-by-step-how-to-create-a-two-way-mirrored-storage-space-via-powershell-storagespaces-powershell/>

NEW QUESTION 149

You have a Hyper-V host named Server1 that runs Windows Server 2016. Server1 host a virtual machine named VM1. VM1 has the following settings: Nested virtualization is enabled.

Dynamic Memory is disabled. VM1 is currently running.

You need to adjust the amount of memory assigned to VM1 as quickly as possible. What should you do first?

- A. Change the memory buffer setting of VM1.
- B. Pause VM1.
- C. Shut down VM1.
- D. Enable Dynamic Memory for VM1.

Answer: D

NEW QUESTION 150

You have a Hyper-V host named Server1 that runs Windows Server 2016. Server1 has ab external virtual switch named Switch1. Server1 hosts a virtual machine named VM1 that runs Windows Server 2016. VM1 has one network adapter. The network adapter connects to Switch1.

You need to limit the maximum network bandwidth available to VM1 to 100 Mbps. The solution must limit the bandwidth for VM1 only.

Which cmdlet should you run?

- A. Set-NetAdapter
- B. Set-VMNetworkAdapter
- C. Set-VM
- D. Set-NetAdapterVmq
- E. Set-NetworkSwitchPortProperty

Answer: B

Explanation:

The Set-VMNetworkAdapterVlan cmdlet configures virtual LAN settings for the traffic through a virtual network adapter.

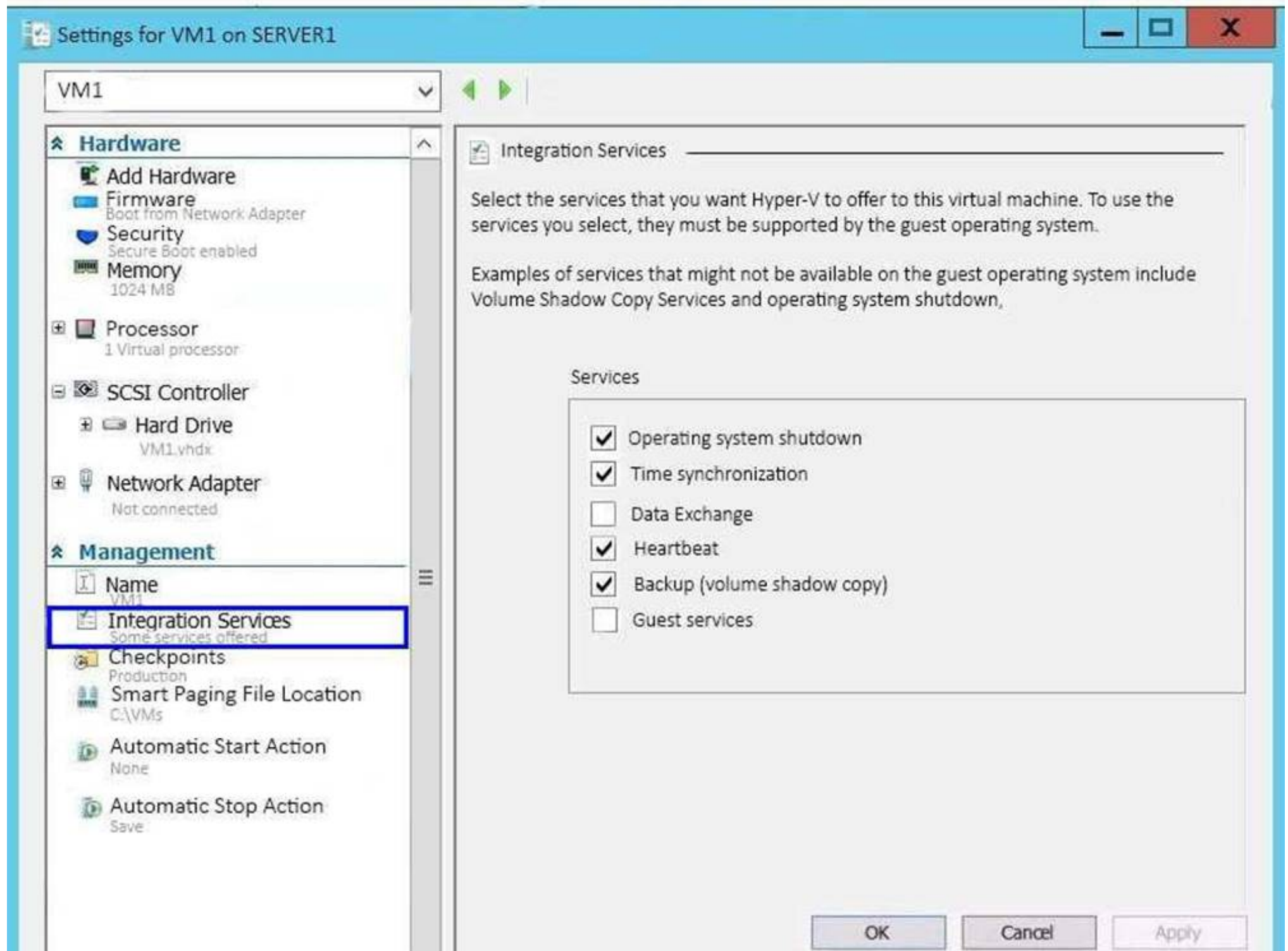
NEW QUESTION 154

Note: This question is part of a series of questions that present the same scenario. Each question in the series contains a unique solution that might meet the stated goals. Some question sets might have more than one correct solution, while others might not have a correct solution.

After you answer a question in this section, you will NOT be able to return to it. As a result, these questions will not appear in the review screen.

You have a Hyper-V host named Server1 that hosts a virtual machine named VM1. Server1 and VM1 run Windows Server 2016.

The settings for VM1 are configured as shown in the exhibit. (Click the Exhibit button.)



You need to ensure that you can use the Copy-VMFile cmdlet on Server1 to copy files from VM1. Solution: You enable the Guest services integration service for VM1.

Does this meet the goal?

- A. Yes
- B. No

Answer: A

Explanation:

References: [https://technet.microsoft.com/en-us/library/dn798297\(v=ws.11\).aspx](https://technet.microsoft.com/en-us/library/dn798297(v=ws.11).aspx)

NEW QUESTION 159

HOTSPOT

You have a Windows Server 2016 failover cluster named Cluster1. You need to implement Cloud Witness for Cluster 1.

What should you do? To answer, select the appropriate options in the answer area. NOTE: Each correct selection is worth one point.

Answer Area

In Microsoft Azure, create:

An availability set
An integration account
A public IP address
A Recovery Services vault
A storage account

On Cluster1, run:

Add-ClusterResource
Add-ClusterResourceType
Set-ClusterParameter
Set-ClusterQuorum

- A. Mastered
- B. Not Mastered

Answer: A

Explanation:

References:

<https://www.vembu.com/blog/deploying-a-azure-cloud-witness-for-a-failover-cluster-in-windows-server-2016/>
<https://docs.microsoft.com/en-us/powershell/module/failoverclusters/set-clusterquorum?view=win10-ps>

NEW QUESTION 160

You have a server named Server1 that runs Windows Server 2016.

The server has an application named App1. App1 writes entries to the Application event log when errors are encountered. The events have IDs of either 111 or 112.

You need to restart the service whenever either of these events is logged. What should you do?

- A. From Windows PowerShell, run the Write-EventLog cmdlet and specify the-EventID parameter and the -Source parameter.
- B. From Event Viewer, create a custom view that has a filter for the event IDs.
- C. From Event Viewer, create a subscription that has a filter for the event IDs.
- D. From Task Scheduler, use Create Task to create one task that includes triggers for both event IDs.
- E. From Windows PowerShell, run the Get-SMSEvent cmdlet and pipe the output to the Start-NetEventSession cmdlet.
- F. From Performance Monitor, add an Event Trace Session data collector that uses the Microsoft-Windows-Eventlog provider.

Answer: D

NEW QUESTION 163

Note: This question is part of a series of questions that present the same scenario. Each question in

the series contains a unique solution that might meet the stated goals. Some question sets might have more than one correct solution, while others might not have a correct solution.

After you answer a question in this section, you will NOT be able to return to it. As a result, these questions will not appear in the review screen.

You network contains an Active Directory forest named contoso.com. The forest contains a child domain named eu.contoso.com.

You plan to implement live migration between two Hyper-V hosts that run Windows Server 2016. The hosts are configured as shown in the following table.

Host name	Configuration
Host1	<ul style="list-style-type: none">• Is a member of the contoso.com domain• Uses an Intel Xeon processor released in 2012• Has an external virtual switch named Switch1• Hosts a virtual machine named VM1 that connects to Switch1
Host2	<ul style="list-style-type: none">• Is a member of the eu.contoso.com domain• Uses an Intel Xeon processor released in 2016• Has an external virtual switch named Switch1

You need to ensure that you can perform a live migration of VM1 from Host1 to Host2. Solution: You move Host2 to the contoso.com domain. Does meet the goal?

- A. Yes
B. No

Answer: B

NEW QUESTION 166

Note: This question is part of a series of questions that present the same scenario. Each question in the series contains a unique solution that might meet the stated goals. Some question sets might have more than one correct solution, while others might not have a correct solution.

After you answer a question in this section, you will NOT be able to return to it. As a result, these questions will not appear in the review screen.

Your network contains an Active Directory forest.

You install Windows Server 2016 on 10 virtual machines.

You need to deploy the Web Server (IIS) server role identically to the virtual machines.

Solution: You use Windows PowerShell Desired State Configuration (DSC) to create a default configuration, and then you apply the configuration to the virtual machines.

Does this meet the goal?

- A. Yes
B. No

Answer: A

Explanation:

References:

<https://www.simple-talk.com/sysadmin/powershell/powershell-desired-state-configuration-the-basics/>

NEW QUESTION 171

You have a server named Server1 that runs Windows Server 2016 You install the Docker daemon on

Server1 You need to configure the Docker daemon to accept connections only on TCP port 64500. What should you do?

- A. Run theNew-NetFirewallRulecmdlet
B. Run theSet-ServiceWindows PowerShell cmdlet.
C. Run the sc config command.
D. Run the sc control command.

Answer: C

NEW QUESTION 173

Note: This question is part of a series of questions that present the same scenario. Each question in the series contains a unique solution that might meet the stated goals. Some question sets might have more than one correct solution, while others might not have a correct solution.

After you answer a question in this section, you will NOT be able to return to it. As a result, these questions will not appear in the review screen.

You network contains an Active Directory forest named contoso.com. The forest contains a child domain named eu.contoso.com.

You plan to implement live migration between two Hyper-V hosts that run Windows Server 2016. The hosts are configured as shown in the following table.

Host name	Configuration
Host1	<ul style="list-style-type: none"> Is a member of the contoso.com domain Uses an Intel Xeon processor released in 2012 Has an external virtual switch named Switch1 Hosts a virtual machine named VM1 that connects to Switch1
Host2	<ul style="list-style-type: none"> Is a member of the eu.contoso.com domain Uses an Intel Xeon processor released in 2016 Has an external virtual switch named Switch1

You need to ensure that you can perform a live migration of VM1 from Host1 to Host2.

Solution: You replace the processor in Host1 with a processor that is identical to the processor in Host2.

Does meet the goal?

- A. Yes
B. No

Answer: B

NEW QUESTION 177

HOTSPOT

You have a Hyper-V host named Server1 that runs Windows Server 2016 datacenter. Server1 is activated.

On Server1, you deploy a virtual machine named VM1 that has a Server Core installation of Windows Server 2016 Standard.

You need to activate VM1 by using Automatic Virtual Machine Activation (AVMA).

Which command should you run? To answer, select the appropriate options in the answer area. NOTE: Each correct selection is worth one point.

Answer Area

reg.exe
regsvr32.exe
setup.exe
Set-VM
Set-WindowsProductKey
slmgr.vbs

/ipk
/pkey
/rearm
/unattend:PID=
-ProductKey

C3RCX-M6NRP-6CXC9-TW2F2-4RHYD

- A. Mastered
B. Not Mastered

Answer: A

Explanation:

References: <https://blogs.technet.microsoft.com/askcore/2013/11/13/activating-virtual-machines-via-automatic-virtual-machine-activation-in-windows-server-2012-r2/>

NEW QUESTION 179

You have a server named Server1 that runs Windows Server 2016.

The server has an application named App1. App1 writes entries to the Application event log when errors are encountered. The events have IDs of either 111 or 112.

You need to restart the service whenever either of these events is logged. What should you do?

- A. From Windows PowerShell, run the Get-SMSEvent cmdlet and pipe the output to the Start-NetEventSession cmdlet.
B. From Event Viewer, create a subscription that has a filter for the event IDs.
C. From Event Viewer, use the Create Basic Task Wizard for each event ID.
D. From Windows PowerShell, run the Get-Event cmdlet and pipe the output to the Start-NetEventSession cmdlet.

Answer: C

NEW QUESTION 183

You have a server named VM1. VM1 is a virtual machine on a Hyper-V host that runs Windows Server 2016. You need to create a checkpoint that includes the

virtual machine memory state of VM1.
What command should you run? To answer, select the appropriate options in the answer area.

▼

Checkpoint-VM
Get-VMSnapshot
Set-VM

-Name VM1 -CheckpointType

▼

Production
ProductionOnly
Standard

▼

Checkpoint-VM
Export-VMSnapshot
Get-VHDSnapshot

-Name VM1 -SnapshotName Snapshot1

- A. Mastered
- B. Not Mastered

Answer: A

Explanation:
References:
<https://docs.microsoft.com/en-us/virtualization/hyper-v-on-windows/user-guide/checkpoints>

NEW QUESTION 185

You have a Hyper-V host named Server1 that runs Windows Server 2016. Server1 hosts a virtual machine named VM1 that runs Windows Server 2012. VM1 has the following configuration.

```
C:\>Get-VM VM1 | fl Version, HardDrives, DynamicMemoryEnabled, Generation, MemoryStartup

Version           : 5.0
HardDrives        : {Hard drive on IDE controller number 0 at location 0}
DynamicMemoryEnabled : False
Generation        : 1
MemoryStartup     : 536870912

C:\>Get-VMIntegrationService VM1

VMName Name                Enabled PrimaryStatusDescription SecondaryStatusDescription
-----
VM1    Guest Service Interface False      OK
VM1    Heartbeat                False      OK
VM1    Key-Value Pair Exchange  False      OK
VM1    Shutdown                  False      OK
VM1    Time Synchronization     False      OK
VM1    VSS                       False      OK
```

You discover that when you back up Server1, VM1 temporarily pauses.
You need to ensure that you can back up Server1 without causing downtime on VM1. What should you do?

- A. Increase the memory on VM1
- B. Connect the hard disk drive of VM1 to an SCSI controller
- C. Update the virtual machine version of VM1
- D. Upgrade VM1 to Windows Server 2016
- E. Enable the VSS integration service on VM1

Answer: E

Explanation:
References:
<https://www.starwindsoftware.com/blog/hyper-v-backup-challenges-windows-server-2016-needs-to-address>

NEW QUESTION 190

.....

Relate Links

100% Pass Your 70-740 Exam with ExamBible Prep Materials

<https://www.exambible.com/70-740-exam/>

Contact us

We are proud of our high-quality customer service, which serves you around the clock 24/7.

Viste - <https://www.exambible.com/>