

Red-Hat

Exam Questions EX200

EX200 Red Hat Certified System Administrator (RHCSA) Exam



NEW QUESTION 1

Configure a cron Task.

User natasha must configure a cron job, local time 14:23 runs and executes: */bin/echo hiya every day.

- A. Mastered
- B. Not Mastered

Answer: A

Explanation:

```
crontab -e -u natasha 23 14/bin/echo hiya
crontab -l -u natasha // view systemctl enable crond systemctl restart crond
```

NEW QUESTION 2

Create a 512M partition, make it as ext4 file system, mounted automatically under /mnt/data and which take effect automatically at boot-start.

- A. Mastered
- B. Not Mastered

Answer: A

Explanation:

```
# fdisk /dev/vda
n
+512M
w
# partprobe /dev/vda
# mkfs -t ext4 /dev/vda5
# mkdir -p /data
# vim /etc/fstab
/dev/vda5 /data ext4 defaults 0 0
# mount -a
```

NEW QUESTION 3

Configure the verification mode of your host account and the password as LDAP. And it can login successfully through ldapuser40. The password is set as "password".

And the certificate can be downloaded from <http://ip/dir/ldap.crt>. After the user logs on the user has no host directory unless you configure the autofs in the following questions.

- A. Mastered
- B. Not Mastered

Answer: A

Explanation:

```
system-config-authentication
LDAP Server: ldap://instructor.example.com (In domain form, not write IP)
OR
# yum groupinstall directory-client (1.krb5-workstation 2.pam-krb5 3.sssd)
# system-config-authentication
1.User Account Database: LDAP
2. LDAP Search Base DN: dc=example,dc=com
3. LDAP Server: ldap://instructor.example.com (In domain form, not write IP)
4. Download CA Certificate
5. Authentication Method: LDAP password
6. Apply
getent passwd ldapuser40
```

NEW QUESTION 4

Your System is going to use as a Router for two networks. One Network is 192.168.0.0/24 and Another Network is 192.168.1.0/24. Both network's IP address has assigned. How will you forward the packets from one network to another network?

- A. Mastered
- B. Not Mastered

Answer: A

Explanation:

```
echo "1" >/proc/sys/net/ipv4/ip_forward
vi /etc/sysctl.conf
net.ipv4.ip_forward = 1
```

If you want to use the Linux System as a Router to make communication between different networks, you need enable the IP forwarding. To enable on running session just set value 1 to /proc/sys/net/ipv4/ip_forward. As well as automatically turn on the IP forwarding features on next boot set on /etc/sysctl.conf file.

NEW QUESTION 5

Configure your Host Name, IP Address, Gateway and DNS.

Host name: station.domain40.example.com

/etc/sysconfig/network

hostname=abc.com

hostname abc.com

IP Address:172.24.40.40/24

Gateway172.24.40.1

DNS:172.24.40.1

A. Mastered

B. Not Mastered

Answer: A

Explanation:

```
# cd /etc/sysconfig/network-scripts/
```

```
# ls
```

```
# vim ifcfg-eth0 (Configure IP Address, Gateway and DNS) IPADDR=172.24.40.40 GATEWAY=172.24.40.1
```

```
DNS1=172.24.40.1
```

```
# vim /etc/sysconfig/network
```

```
(Configure Host Name)
```

```
HOSTNAME= station.domain40.example.com
```

```
OR
```

Graphical Interfaces:

System->Preference->Network Connections (Configure IP Address, Gateway and DNS) Vim

```
/etc/sysconfig/network
```

```
(Configure Host Name)
```

NEW QUESTION 6

A YUM repository has been provided at http://server.domain11.example.com/pub/x86_64/Server. Configure your system to use this location as a default repository.

A. Mastered

B. Not Mastered

Answer: A

Explanation:

```
vim/etc/yum/repos/base.repo
```

```
[base]
```

```
name=base
```

```
baseurl= http://server.domain11.example.com/pub/x86_64/Server
```

```
gpgcheck=0
```

```
enable=1
```

```
Save and Exit
```

Use yum list for validation, the configuration is correct if list the package information. If the Yum configuration is not correct then maybe cannot answer the following questions.

NEW QUESTION 7

Download the document from <ftp://instructor.example.com/pub/testfile>, find all lines containing [abcde] and redirect to /MNT/answer document, then rearrange the order according the original content.

A. Mastered

B. Not Mastered

Answer: A

Explanation:

Download the file to /tmp first

```
grep [abcde] /tmp/testfile > /mnt/answer
```

NEW QUESTION 8

Successfully resolve to server1.example.com where your DNS server is 172.24.254.254.

A. Mastered

B. Not Mastered

Answer: A

Explanation:

```
vi /etc/resolv.conf
```

```
nameserver 172.24.254.254
```

```
host server1.example.com
```

On every clients, DNS server is specified in /etc/resolv.conf. When you request by name it tries to resolv from DNS server.

NEW QUESTION 9

According the following requirements to create user, user group and the group members:

- A group named admin.
 - A user named mary, and belong to admin as the secondary group.
 - A user named alice, and belong to admin as the secondary group.
 - A user named bobby, bobby's login shell should be non-interactive. Bobby not belong to admin as the secondary group.
- Mary, Alice, bobby users must be set "password" as the user's password.

- A. Mastered
- B. Not Mastered

Answer: A

Explanation:

see explanation below.

```
groupadd admin
useradd -G admin mary
useradd -G admin alice
useradd -s /sbin/nologin bobby
echo "password" | passwd --stdin mary
echo "password" | passwd --stdin alice
echo "password" | passwd --stdin bobby
```

NEW QUESTION 10

Find all lines in the file /usr/share/dict/words that contain the string seismic. Put a copy of all these lines in their original order in the file /root/wordlist. /root/wordlist should contain no empty lines and all lines must be exact copies of the original lines in /usr/share/dict/words.

- A. Mastered
- B. Not Mastered

Answer: A

Explanation:

```
grep seismic /usr/share/dict/words> /root/wordlist
```

NEW QUESTION 10

Configure a HTTP server, which can be accessed through <http://station.domain40.example.com>. Please download the released page from <http://ip/dir/example.html>.

- A. Mastered
- B. Not Mastered

Answer: A

Explanation:

```
# yum install -y httpd
# chkconfig httpd on
# cd /var/www/html
# wget http://ip/dir/example.html
# cp example.com index.html
# vim /etc/httpd/conf/httpd.conf
NameVirtualHost 192.168.0.254:80
<VirtualHost 192.168.0.254:80>
DocumentRoot /var/www/html/
ServerName station.domain40.example.com
</VirtualHost>
```

NEW QUESTION 13

Configure your NFS services. Share the directory by the NFS Shared services.

- A. Mastered
- B. Not Mastered

Answer: A

Explanation:

see explanation below.

```
/etc/init.d/rpcbind start
/etc/init.d/nfslock start
/etc/init.d/nfs start
chkconfig rpcbind on
chkconfig nfslock on
chkconfig nfs on
showmount -e localhost
```

NEW QUESTION 17

Configure your Host Name, IP Address, Gateway and DNS.

Host name: dtop5.dn.ws.com
IP Address: 172.28.10.5/4

Gateway: 172.28.10.1
 DNS: 172.28.10.1

- A. Mastered
- B. Not Mastered

Answer: A

Explanation:

- ▶ Configure Host Name
 - ▶ vim /etc/sysconfig/network NETWORKING=yes HOSTNAME=dtop5.dn.ws.com GATEWAY=172.28.10.1
2. Configure IP Address, Gateway and DNS
 Configure the network by Network Manager:



Note: Please remember to choose two options:

- ▶ Connect automatically
- ▶ Available to all users

Click "Apply", save and exit, and restart your network services:

Service network restart

3. Validate these profiles:

a) Check gateway: # vim / etc / sysconfig / network

NETWORKING=yes

HOSTNAME=dtop5.dn.ws.com

GATEWAY=172.28.10.1

b) Check Host Name: # vim /etc/hosts

172.28.10.5 dtop5.dn.ws.com dtop5 # Added by NetworkManager

127.0.0.1 localhost.localdomain localhost

::1 dtop.dn.ws.com dtop5 localhost6.localdomain6 localhost6

c) Check DNS: # vim /etc/resolv.conf

Generated by NetworkManager

Search dn.ws.com

Nameserver 172.28.10.1

d) Check Gateway: # vim /etc/sysconfig/network-scripts/ifcfg-eth0


```
DEVICE="eth0"
NM_CONTROLLED="yes"
ONBOOT=yes
TYPE=Ethernet
BOOTPROTO=none
IPADDR=172.28.10.5
PREFIX=24
GATEWAY=172.28.10.1
DNS1=172.28.10.1
DOMAIN=dn.ws.com
DEFROUTE=yes
IPV4_FAILURE_FATAL=yes
IPV6INIT=no
NAME="System eth0"
UUID=5fb06bd0-0bb0-7ffb-45f1-d6edd65f3e03
HWADDR=00:0c:29:0E:A6:C8
```

NEW QUESTION 21

Configure autofs.

Configure the autofs automatically mount to the home directory of LDAP, as required: server.domain11.example.com use NFS to share the home to your system.

This file system contains a pre configured home directory of user ldapuserX.

Home directory of ldapuserX is: server.domain11.example.com /home/guests/ldapuser

Home directory of ldapuserX should automatically mount to the ldapuserX of the local /home/guests Home directory's write permissions must be available for users ldapuser1's password is password

- A. Mastered
- B. Not Mastered

Answer: A

Explanation:

```
yum install -y autofs mkdir /home/rehome
```

```
cd /etc/auto.master
```

```
/home/rehome/etc/auto.ldap
```

Keep then exit

```
cp /etc/auto.misc /etc/auto.ldap
```

```
cd /etc/auto.ldap
```

```
ldapuserX -fstype=nfs,rw server.domain11.example.com:/home/guests/
```

Keep then exit

```
systemctl start autofs
```

```
systemctl enable autofs
```

```
su - ldapuserX// test
```

If the above solutions cannot create files or the command prompt is -bash-4.2\$, it maybe exist multi-level directory, this needs to change the server.domain11.example.com:/home/guests/ to server.domain11.example.com:/home/guests/ldapuserX. What is multi-level directory? It means there is a directory of ldapuserX under the /home/guests/ldapuserX in the questions. This directory is the real directory.

NEW QUESTION 22

Find the rows that contain abcde from file /etc/testfile, and write it to the file/tmp/testfile, and the sequence is requested as the same as /etc/testfile.

- A. Mastered
- B. Not Mastered

Answer: A

Explanation:

```
# cat /etc/testfile | while read line;
```

```
do
```

```
echo $line | grep abcde | tee -a /tmp/testfile
```

```
done
```

```
OR
```

```
grep `abcde` /etc/testfile > /tmp/testfile
```

NEW QUESTION 26

Create a logical volume

Create a new logical volume as required:

Name the logical volume as database, belongs to datastore of the volume group, size is 50 PE. Expansion size of each volume in volume group datastore is 16MB.

Use ext3 to format this new logical volume, this logical volume should automatically mount to /mnt/database

- A. Mastered
- B. Not Mastered

Answer: A

Explanation:

fdisk -cu /dev/vda// Create a 1G partition, modified when needed

partx -a /dev/vda

pvccreate /dev/vdax

vgcreate datastore /dev/vdax -s 16M

lvcreate -l 50 -n database datastore

mkfs.ext3 /dev/datastore/database

mkdir /mnt/database

mount /dev/datastore/database /mnt/database/ df -Th

vi /etc/fstab

/dev/datastore /database /mnt/database/ ext3 defaults 0 0 mount -a

Restart and check all the questions requirements.

NEW QUESTION 28

Configure the system synchronous as 172.24.40.10.

- A. Mastered
- B. Not Mastered

Answer: A

Explanation:

Graphical Interfaces:

System-->Administration-->Date & Time

OR

system-config-date

NEW QUESTION 31

Adjust the size of the Logical Volume.

Adjust the size of the vo Logical Volume, its file system size should be 290M. Make sure that the content of this system is complete.

Note: the partition size is rarely accurate to the same size as required, so in the range 270M to 320M is acceptable.

- A. Mastered
- B. Not Mastered

Answer: A

Explanation:

Addition

df -hT

lvextend -L +100M /dev/vg0/vo

Lvscan

xfs_growfs /home/ //home is the mounted directory of the LVM, this step just need to do in the practice environment, and test EXT4 does not need this step.

resize2fs /dev/vg0/vo// use this command to update in examination. df -hT

OR

Subtraction

e2fsck -f/dev/vg0/vo

umount /home

resize2fs /dev/vg0/vo // the final required partition capacity is 100M lvreduce -l 100M /dev/vg0/vo mount /dev/vg0/vo/home

df -hT

NEW QUESTION 32

Configure your web services, download from <http://instructor.example.com/pub/serverX.html> And the services must be still running after system rebooting.

- A. Mastered
- B. Not Mastered

Answer: A

Explanation:

cd /var/www/html

wget

<http://instructor.example.com/pub/serverX.html> mv serverX.html index.html /etc/init.d/httpd restart chkconfig httpd on

NEW QUESTION 34

Create a volume group, and set 8M as a extends. Divided a volume group containing 50 extends on volume group lv (lvshare), make it as ext4 file system, and mounted automatically under /mnt/data. And the size of the floating range should set between 380M and 400M.

- A. Mastered
- B. Not Mastered

Answer: A

Explanation:

```
# fdisk
# partprobe
# pvcreate /dev/vda6
# vgcreate -s 8M vg1 /dev/vda6 -s
# lvcreate -n lvshare -l 50 vg1 -l
# mkfs.ext4 /dev/vg1/lvshare
# mkdir -p /mnt/data
# vim /etc/fstab
/dev/vg1/lvshare /mnt/data ext4 defaults 0 0
# mount -a
# df -h
```

NEW QUESTION 37

Create a new logical volume according to the following requirements:

The logical volume is named database and belongs to the datastore volume group and has a size of 50 extents. Logical volumes in the datastore volume group should have an extent size of 16 MB.

Format the new logical volume with a ext3 filesystem.

The logical volume should be automatically mounted under /mnt/database at system boot time.

- A. Mastered
- B. Not Mastered

Answer: A

Explanation:

```
fdisk -cu /dev/vda
partx -a /dev/vda
pvcreate /dev/vdax
vgcreate datastore /dev/vdax -s 16M
lvcreate-l 50 -n database datastore
mkfs.ext3 /dev/datastore/database
mkdir /mnt/database
mount /dev/datastore/database /mnt/database/ df -Th
vi /etc/fstab
/dev/datastore /database /mnt/database/ ext3 defaults 0 0 mount -a
```

NEW QUESTION 38

Some users home directory is shared from your system. Using showmount -e localhost command, the shared directory is not shown. Make access the shared users home directory.

- A. Mastered
- B. Not Mastered

Answer: A

Explanation:

- ▶ Verify the File whether Shared or not ? : cat /etc/exports
- ▶ Start the nfs service: service nfs start
- ▶ Start the portmap service: service portmap start
- ▶ Make automatically start the nfs service on next reboot: chkconfig nfs on
- ▶ Make automatically start the portmap service on next reboot: chkconfig portmap on
- ▶ Verify either sharing or not: showmount -e localhost
- ▶ Check that default firewall is running on system?

If running flush the iptables using iptables -F and stop the iptables service.

NEW QUESTION 42

According the following requirements, configure autofs service and automatically mount to user's home directory in the ldap domain.

- Instructor.example.com (192.168.0.254) has shared /home/guests/ldapuserX home directory to your system by over NFS export, X is your hostname number.

- LdapuserX's home directory is exist in the instructor.example.com: /home/ guests/ldapuserX

- LdapuserX's home directory must be able to automatically mount to /home/ guests/ldapuserX in your system.

- Home directory have write permissions for the corresponding user.

However, you can log on to the ldapuser1 - ldapuser99 users after verification. But you can only get your corresponding ldapuser users. If your system's hostname is server1.example.com, you can only get ldapuser1's home directory.

- A. Mastered
- B. Not Mastered

Answer: A

Explanation:

(1)find /etc -size 10k -exec cp {} /tmp/findfiles \;

(2)find / -user lucy -exec cp -a {} /tmp/findfiles \;

Note: If find users and permissions, you need to use cp - a options, to keep file permissions and user attributes etc.

NEW QUESTION 45

Notes:

NFS NFS instructor.example.com:/var/ftp/pub/rhel6/dvd

A. Mastered

B. Not Mastered

Answer: A

Explanation:

YUM

<http://instructor.example.com/pub/rhel6/dvd>

ldap <http://instructor.example.com/pub/EXAMPLE-CA-CERT> Install dialog package.

yum install dialog

NEW QUESTION 48

Create a Shared Directory.

Create a shared directory /home/admins, make it has the following characteristics:

/home/admins belongs to group adminuser

This directory can be read and written by members of group adminuser Any files created in /home/ admin, group automatically set as adminuser.

A. Mastered

B. Not Mastered

Answer: A

Explanation:

mkdir /home/admins

chgrp -R adminuser /home/admins

chmodg+w /home/admins

chmodg+s /home/admins

NEW QUESTION 50

Create a user named alex, and the user id should be 1234, and the password should be alex111.

A. Mastered

B. Not Mastered

Answer: A

Explanation:

useradd -u 1234 alex

passwd alex

alex111

alex111

OR

echo alex111|passwd -stdin alex

NEW QUESTION 53

According the following requirements to create a local directory /common/admin.

▶ This directory has admin group.

▶ This directory has read, write and execute permissions for all admin group members.

▶ Other groups and users don't have any permissions.

▶ All the documents or directories created in the/common/admin are automatically inherit the admin group.

A. Mastered

B. Not Mastered

Answer: A

Explanation:

mkdir -p /common/admin

chgrp admin /common/admin

chmod 2770 /common/admin


NEW QUESTION 57

Create a swap space, set the size is 600 MB, and make it be mounted automatically after rebooting the system (permanent mount).

- A. Mastered
- B. Not Mastered

Answer: A

Explanation:

 if=/dev/zero of=/swapfile bs=1M count=600 mkswap /swapfile
/etc/fstab:
/swapfile swap swap defaults 0 0 mount -a

NEW QUESTION 58

Upgrading the kernel as 2.6.36.7.1, and configure the system to Start the default kernel, keep the old kernel available.

- A. Mastered
- B. Not Mastered

Answer: A

Explanation:

```
# cat /etc/grub.conf
# cd /boot
# lftp it
# get dr/dom/kernel-xxxx.rpm
# rpm -ivh kernel-xxxx.rpm
# vim /etc/grub.conf default=0
```

NEW QUESTION 61

Configure a task: plan to run echo hello command at 14:23 every day.

- A. Mastered
- B. Not Mastered

Answer: A

Explanation:

```
# which echo
# crontab -e
23 14 * * * /bin/echo hello
# crontab -l (Verify)
```

NEW QUESTION 63

Open kmcrl value of 5 , and can verify in /proc/ cmdline

- A. Mastered
- B. Not Mastered

Answer: A

Explanation:

see explanation below.
vim /boot/grub/grub.conf
kernel/vmlinuz-2.6.32-71.el6.x86_64 ro root=/dev/mapper/GLSvg-GLSrootrd_LVM_LV=GLSvg/GLSroot
rd_LVM_LV=GLSvg/GLSswprd_NO_LUKSrd_NO_MDrd_NO_DM
LANG=en_US.UTF-8 SYSFONT=latacyrheb-sun16 KEYBOARDTYPE=pc KEYTABLE=us crashkernel=auto rhgb quiet kmcrl=5
Restart to take effect and verification:
cat /proc/cmdline
ro root=/dev/mapper/GLSvg-GLSroot rd_LVM_LV=GLSvg/GLSroot rd_LVM_LV=GLSvg/GLSswap rd_NO_LUKS rd_NO_MD rd_NO_DM
LANG=en_US.UTF-8 SYSFONT=latacyrheb-sun16 KEYBOARDTYPE=pc KEYTABLE=us rhgb quiet kmcrl=5


NEW QUESTION 68

A YUM source has been provided in the <http://instructor.example.com/pub/rhel6/dvd>
Configure your system and can be used normally.

- A. Mastered
- B. Not Mastered

Answer: A

Explanation:

 /etc/yum.repos.d/base.repo
[base]
name=base
baseurl=http://instructor.example.com/pub/rhel6/dvd
gpgcheck=0
yum list

NEW QUESTION 69

You are new System Administrator and from now you are going to handle the system and your main task is Network monitoring, Backup and Restore. But you don't know the root password. Change the root password to redhat and login in default Runlevel.

- A. Mastered
- B. Not Mastered

Answer: A

Explanation:

When you Boot the System, it starts on default Runlevel specified in /etc/inittab:

Id?:initdefault:

When System Successfully boot, it will ask for username and password. But you don't know the root's password. To change the root password you need to boot the system into single user mode. You can pass the kernel arguments from the boot loader.

1. Restart the System.
2. You will get the boot loader GRUB screen.
3. Press a and type 1 or s for single mode ro root=LABEL=/ rhgb quiet s
4. System will boot on Single User mode.
5. Use passwd command to change.
6. Press ctrl+d

NEW QUESTION 74

Create a 2G swap partition which take effect automatically at boot-start, and it should not affect the original swap partition.

- A. Mastered
- B. Not Mastered

Answer: A

Explanation:

```
# fdisk /dev/sda
```

```
p
```

```
(check Partition table)
```

```
n
```

```
(create new partition: press e to create extended partition, press p to create the main partition, and the extended partition is further divided into logical partitions)
```

```
Enter
```

```
+2G
```

```
t
```

```
l
```

```
W
```

```
partx -a /dev/sda
```

```
partprobe
```

```
mkswap /dev/sda8
```

```
Copy UUID
```

```
swapon -a
```

```
vim /etc/fstab
```

```
UUID=XXXXXX swap swap defaults 0 0
```

```
(swapon -s)
```


NEW QUESTION 78

Make on /archive directory that only the user owner and group owner member can fully access.

- A. Mastered
- B. Not Mastered

Answer: A

Explanation:

 `chmod 770 /archive`

 Verify using : `ls -ld /archive` Preview should be like:

```
drwxrwx--- 2 root sysuser 4096 Mar 16 18:08 /archive
```

To change the permission on directory we use the chmod command. According to the question that only the owner user (root) and group member (sysuser) can fully access the directory so: `chmod 770 /archive`

NEW QUESTION 82

Configure a user account.

Create a user iaruid is 3400. Password is redhat

- A. Mastered
- B. Not Mastered

Answer: A

Explanation:

```
useradd -u 3400 iar
```

```
passwd iar
```

NEW QUESTION 83

Create a backup

Create a backup file named /root/backup.tar.bz2, contains the content of /usr/local, tar must use bzip2 to compress.

- A. Mastered
- B. Not Mastered

Answer: A

Explanation:

```
cd /usr/local
```

```
tar -jcvf /root/backup.tar.bz2
```

```
mkdir /test
```

```
tar -jxvf /root/backup.tar.bz2 -C /test//
```

Decompression to check the content is the same as the /usr/loca after If the questions require to use gzip to compress. change -j to -z.

NEW QUESTION 84

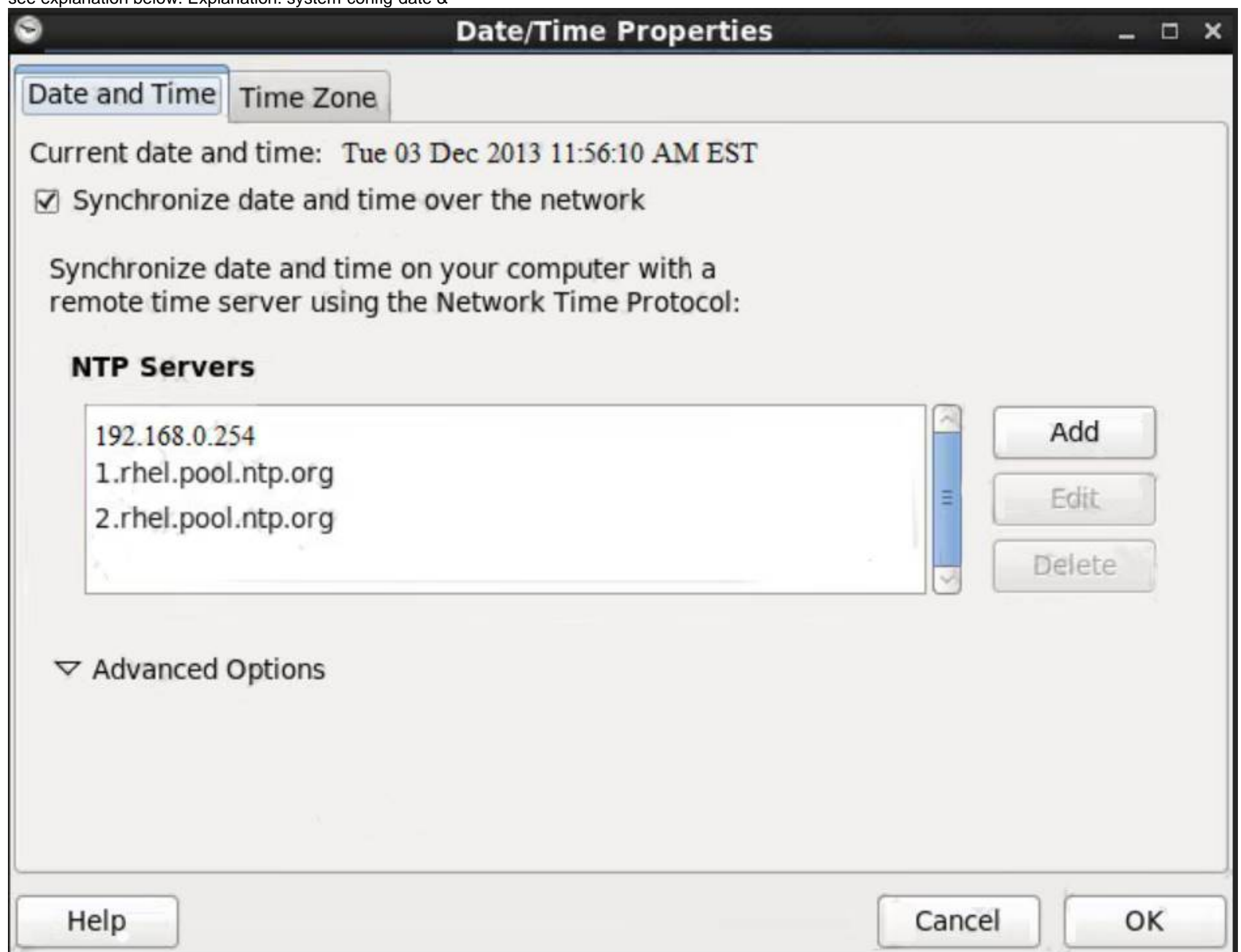
Configure the NTP service in your system.

- A. Mastered
- B. Not Mastered

Answer: A

Explanation:

see explanation below. Explanation: system-config-date &



NEW QUESTION 87

Download ftp://192.168.0.254/pub/boot.iso to /root, and mounted automatically under /media/cdrom and which take effect automatically at boot-start.

- A. Mastered
- B. Not Mastered

Answer: A

Explanation:

```
# cd /root; wget ftp://192.168.0.254/pub/boot.iso
# mkdir -p /media/cdrom
# vim /etc/fstab
/root/boot.iso /media/cdrom iso9660 defaults,loop 0 0
# mount -a
mount [-t vfstype] [-o options] device dir
```

NEW QUESTION 91

Add a new logical partition having size 100MB and create the data which will be the mount point for the new partition.

- A. Mastered
- B. Not Mastered

Answer: A

Explanation:

1. Use fdisk /dev/hda-> To create new partition.
 2. Type n ->For New partitions
 3. It will ask for Logical or Primary Partitions. Press l for logical.
 4. It will ask for the Starting Cylinder: Use the Default by pressing Enter Keys
 5. Type the size: +100M you can specify either Last cylinder of size here.
 6. Press P to verify the partitions lists and remember the partitions name.
 7. Press w to write on partitions table.
 8. Either Reboot or use partprobe command.
 9. Use mkfs -t ext3 /dev/hda?
- OR
1. mke2fs -j /dev/hda? ->To create ext3 filesystem.
 2. vi /etc/fstab
 3. Write:
/dev/hda? /data ext3 defaults 0 0
 4. Verify by mounting on current sessions also: mount /dev/hda? /data

NEW QUESTION 94

The firewall must be open.

- A. Mastered
- B. Not Mastered

Answer: A

Explanation:

```
/etc/init.d/iptables start
iptables -F
iptables -X
iptables -Z
/etc/init.d/iptables save
chkconfig iptables on
```

NEW QUESTION 99

Create one partitions having size 100MB and mount it on data.

- A. Mastered
- B. Not Mastered


Answer: A

Explanation:

1. Use fdisk /dev/hda to create new partition.
 2. Type n For New partitions.
 3. It will ask for Logical or Primary Partitions. Press l for logical.
 4. It will ask for the Starting Cylinder: Use the Default by pressing Enter Key.
 5. Type the Size: +100M you can specify either Last cylinder of size here.
 6. Press P to verify the partitions lists and remember the partitions name.
 7. Press w to write on partitions table.
 8. Either Reboot or use partprobe command.
 9. Use mkfs -t ext3 /dev/hda?
- OR
- ```
mke2fs -j /dev/hda? To create ext3 filesystem.
vi /etc/fstab
Write:
/dev/hda? /data ext3 defaults 1 2
Verify by mounting on current Sessions also: mount /dev/hda? /data
```

**NEW QUESTION 104**

Copy /etc/fstab document to /var/TMP directory. According the following requirements to configure the permission of this document.

-  The owner of this document must be root.



- ▶ This document belongs to root group.
- ▶ User mary have read and write permissions for this document.
- ▶ User alice have read and execute permissions for this document.
- ▶ Create user named bob, set uid is 1000. Bob have read and write permissions for this document.
- ▶ All users has read permission for this document in the system.

A. Mastered  
B. Not Mastered

**Answer:** A

**Explanation:**

```
cp /etc/fstab /var/tmp
chown root:root /var/tmp/fstab
chmod a-x /var/tmp/fstab
setfacl -m u:mary:rw /var/tmp/fstab
setfacl -m u:alice:rx /var/tmp/fstab
useradd -u 1000 bob
```

**NEW QUESTION 109**

Search files.  
Find out files owned by jack, and copy them to directory /root/findresults

A. Mastered  
B. Not Mastered

**Answer:** A

**Explanation:**

```
mkdir /root/findfiles
find / -user jack -exec cp -a {} /root/findfiles/ \; ls /root/findresults
```

**NEW QUESTION 114**

Make a swap partition having 100MB. Make Automatically Usable at System Boot Time.

A. Mastered  
B. Not Mastered

**Answer:** A

**Explanation:**

see explanation below.

- ▶ Use fdisk /dev/hda ->To create new partition.
- ▶ Type n-> For New partition
- ▶ It will ask for Logical or Primary Partitions. Press l for logical.
- ▶ It will ask for the Starting Cylinder: Use the Default by pressing Enter Key.
- ▶ Type the Size: +100M ->You can Specify either Last cylinder of Size here.
- ▶ Press P to verify the partitions lists and remember the partitions name. Default System ID is 83 that means Linux Native.
- ▶ Type t to change the System ID of partition.
- ▶ Type Partition Number
- ▶ Type 82 that means Linux Swap.
- ▶ Press w to write on partitions table.
- ▶ Either Reboot or use partprobe command.
- ▶ mkswap /dev/hda? ->To create Swap File system on partition.
- ▶ swapon /dev/hda? ->To enable the Swap space from partition.
- ▶ free -m ->Verify Either Swap is enabled or not.
- ▶ vi /etc/fstab/dev/hda? swap swap defaults 0 0
- ▶ Reboot the System and verify that swap is automatically enabled or not.

**NEW QUESTION 116**

One Logical Volume named lv1 is created under vg0. The Initial Size of that Logical Volume is 100MB. Now you required the size 500MB. Make successfully the size of that Logical Volume 500M without losing any data. As well as size should be increased online.

A. Mastered  
B. Not Mastered

**Answer:** A

**Explanation:**

The LVM system organizes hard disks into Logical Volume (LV) groups. Essentially, physical hard disk partitions (or possibly RAID arrays) are set up in a bunch of equal sized chunks known as Physical Extents (PE). As there are several other concepts associated with the LVM system, let's start with some basic definitions: Physical Volume (PV) is the standard partition that you add to the LVM mix. Normally, a physical volume is a standard primary or logical partition. It can also be a RAID array.

Physical Extent (PE) is a chunk of disk space. Every PV is divided into a number of equal sized PEs. Every PE in a LV group is the same size. Different LV groups can have different sized PEs.

Logical Extent (LE) is also a chunk of disk space. Every LE is mapped to a specific PE.

Logical Volume (LV) is composed of a group of LEs. You can mount a file system such as /home and /var on an LV.

Volume Group (VG) is composed of a group of LVs. It is the organizational group for LVM. Most of the commands that you'll use apply to a specific VG.

- ▶ Verify the size of Logical Volume: `lvdisplay /dev/vg0/lv1`
- ▶ Verify the Size on mounted directory: `df -h` or `df -h` mounted directory name
- ▶ Use: `lvextend -L+400M /dev/vg0/lv1`
- ▶ `ext2online -d /dev/vg0/lv1` to bring extended size online.
- ▶ Again Verify using `lvdisplay` and `df -h` command.

**NEW QUESTION 117**

Create a collaborative directory /home/admins with the following characteristics: Group ownership of /home/admins is adminuser

The directory should be readable, writable, and accessible to members of adminuser, but not to any other user. (It is understood that root has access to all files and directories on the system.)

Files created in /home/admins automatically have group ownership set to the adminuser group

- A. Mastered
- B. Not Mastered

**Answer:** A

**Explanation:**

```
mkdir /home/admins
chgrp -R adminuser /home/admins
chmodg+w /home/admins
chmodg+s /home/admins
```

**NEW QUESTION 118**

There is a local logical volumes in your system, named with shrink and belong to VGSRV volume group, mount to the /shrink directory. The definition of size is 320 MB.

Requirement:

Reduce the logical volume to 220 MB without any loss of data. The size is allowed between 200-260 MB after reducing.

- A. Mastered
- B. Not Mastered

**Answer:** A

**Explanation:**

```
cd;umount /shrink
e2fsck -f /dev/mapper/vgsrv-shrink
resize2fs /dev/mapper/vgsrv-shrink 220M
lvreduce -L 220M /dev/mapper/vgsrv-shrink
mount -a
```

**NEW QUESTION 119**

Upgrade the kernel, start the new kernel by default. kernel download from this address: <ftp://server1.domain10.example.com/pub/update/new.kernel>

- A. Mastered
- B. Not Mastered

**Answer:** A

**Explanation:**

Download the new kernel file and then install it.

```
[root@desktop8 Desktop]# ls
kernel-2.6.32-71.7.1.el6.x86_64.rpm
kernel-firmware-2.6.32-71.7.1.el6.noarch.rpm
[root@desktop8 Desktop]# rpm -ivh kernel-*
Preparing... #####
[100%]
1:kernel-firmware
[50%]
2:kernel
[100%]
Verify the grub.conf file, whether use the new kernel as the default boot. [root@desktop8 Desktop]# cat
/boot/grub/grub.conf default=0
title Red Hat Enterprise Linux Server (2.6.32-71.7.1.el6.x86_64)
root (hd0,0)
kernel /vmlinuz-2.6.32-71.7.1.el6.x86_64 ro root=/dev/mapper/vol0-root rd_LVM_LV=vol0/root rd_NO_LUKS rd_NO_MD
```

rd\_NO\_DM LANG=en\_US.UTF-8 SYSFONT=latarcyrheb-sun16 KEYBOARDTYPE=pc KEYTABLE=us crashkernel=auto rhgb quiet  
initrd /initramfs-2.6.32-71.7.1.el6.x86\_64.img

#### NEW QUESTION 123

Add users: user2, user3.

The Additional group of the two users: user2, user3 is the admin group Password: redhat

- A. Mastered
- B. Not Mastered

**Answer:** A

#### Explanation:

```
useradd -G admin user2
useradd -G admin user3
passwd user2
redhat
passwd user3
redhat
```

#### NEW QUESTION 125

Configure your system so that it is an NTP client of server.domain11.example.com

- A. Mastered
- B. Not Mastered

**Answer:** A

#### Explanation:

#system-config-date

Note: dialog box will open in that

Check mark Synchronize date and time over network. Remove all the NTP SERVER and click ADD and type server.domain11.example.com

\*\*\*\*\*And then press ENTER and the press OK\*\*\*\*\*

#### NEW QUESTION 130

There is a server having 172.24.254.254 and 172.25.254.254. Your System lies on 172.24.0.0/16. Make successfully ping to 172.25.254.254 by Assigning following IP: 172.24.0.x where x is your station number.

- A. Mastered
- B. Not Mastered

**Answer:** A

#### Explanation:

- ▶ Use netconfig command
- ▶ Enter the IP Address as given station number by your examiner: example: 172.24.0.1
- ▶ Enter Subnet Mask
- ▶ Enter Default Gateway and primary name server
- ▶ press on ok
- ▶ ifdown eth0
- ▶ ifup eth0
- ▶ verify using ifconfig

In the lab server is playing the role of router, IP forwarding is enabled. Just set the Correct IP and gateway, you can ping to 172.25.254.254.

#### NEW QUESTION 133

SELinux must be running in the Enforcing mode.

- A. Mastered
- B. Not Mastered

**Answer:** A

#### Explanation:

getenforce // Check the current mode of SELinux // SELinux runs in enforcing mode // Check

getenforce 1

getenforce

vim /etc/selinux/config selinux=enforcing // To temporarily enable SELinux

wg

sestatus

#### NEW QUESTION 135

Binding to an external validation server.

System server.domain11.example.com provides a LDAP validation service, your system should bind to this service as required:

Base DN of validation service is dc=example,dc=com

LDAP is used for providing account information and validation information Connecting and using the certification of

<http://server.domain11.example.com/pub/EXAMPLE-CA-CERT> to encrypt

After the correct configuration, ldapuser1 can log into your system, it does not have HOME directory until you finish autofs questions, ldapuser1 password is password.

- A. Mastered
- B. Not Mastered

**Answer:** A

**Explanation:**

yum -y install sssd authconfig-gtk krb5-workstation authconfig-gtk // open the graphical interface

Modify user account database to ldap, fill up DN and LDAP SERVER as questions required, use TLS to encrypt connections making tick, write

<http://server.domain11.example.com/pub/EXAMPLE-CA-CERT> to download ca, authentication method choose ldap password.

You can test if the ldapuser is added by the following command:

Id ldapuser1

Note: user password doesn't not need to set

**NEW QUESTION 136**

Create User Account.

Create the following user, group and group membership:

Adminuser group

User natasha, using adminuser as a sub group

User Harry, also using adminuser as a sub group

User sarah, can not access the SHELL which is interactive in the system, and is not a member of adminuser, natashaharrysarah password is redhat.

- A. Mastered
- B. Not Mastered

**Answer:** A

**Explanation:**

groupadd adminuser

useradd natasha -G adminuser

useradd haryy -G adminuser

useradd sarah -s /sbin/nologin

Passwd user name // to modify password or echo redhat | passwd --stdin user name id natasha // to view user group.

**NEW QUESTION 137**

.....

## Thank You for Trying Our Product

### We offer two products:

1st - We have Practice Tests Software with Actual Exam Questions

2nd - Questions and Answers in PDF Format

### EX200 Practice Exam Features:

- \* EX200 Questions and Answers Updated Frequently
- \* EX200 Practice Questions Verified by Expert Senior Certified Staff
- \* EX200 Most Realistic Questions that Guarantee you a Pass on Your First Try
- \* EX200 Practice Test Questions in Multiple Choice Formats and Updates for 1 Year

**100% Actual & Verified — Instant Download, Please Click**  
**[Order The EX200 Practice Test Here](#)**