

98-365 Dumps

Windows Server Administration Fundamentals

<https://www.certleader.com/98-365-dumps.html>



NEW QUESTION 1

Which two services should you use to ensure that your networked computers and servers automatically maintain the latest security patches? (Choose two.)

- A. Windows Server Update Service
- B. Update command in Programs and Features
- C. Microsoft Windows Update
- D. Driver Update in Hardware Properties

Answer: AC

Explanation:

A: Windows Server Update Services (WSUS) enables information technology administrators to deploy the latest Microsoft product updates to computers that are running the Windows operating system. By using WSUS, administrators can fully manage the distribution of updates that are released through Microsoft Update to computers in their network.

C: Windows Update keeps a Windows PC up to date.

NEW QUESTION 2

Disk mirroring occurs when data is:

- A. Duplicated on the same disk.
- B. Backed up by using parity.
- C. Duplicated on separate disks.
- D. Split between disks.

Answer: C

NEW QUESTION 3

You notice frequent writes to the page file.

Which should you monitor to determine the cause?

- A. CPU
- B. RAM
- C. Network
- D. Hard disk

Answer: B

Explanation:

When the RAM is full the page file is used as virtual RAM.

NEW QUESTION 4

This question requires that you evaluate the underlined text to determine if it is correct.

You install a new Windows Server 2008 R2 server for your school athletic department. The installation completes without errors. However, the new server is unable to communicate with the network. After checking cable connections and network configuration, you find that no network connections are listed in the Control Panel/Network Connections applet.

You should use "Device Manager" to investigate a potential problem with the network adapter driver.

Select the correct answer if the underlined text does not make the statement correct. Select "No change is needed" if the underlined text makes the statement correct

- A. Network and Sharing Center
- B. Control Panel/Network Connections
- C. Server Manager/WMI Control
- D. No change is needed

Answer: D

Explanation:

The Device Manager is a Control Panel applet in Microsoft Windows operating systems. It allows users to view and control the hardware attached to the computer. When a piece of hardware is not working, the offending hardware is highlighted for the user to deal with.

Reference: http://en.wikipedia.org/wiki/Device_Manager

NEW QUESTION 5

You manage the servers for the School of Business at your university. The school has a Hyper-V server that runs three virtual machines (VMs). Each VM runs Windows Server 2008 R2.

You need to apply the latest Windows server updates to each of the VMs. You need to be able to revert the servers back to their original state before applying the updates.

Which Microsoft Virtualization feature should you use?

- A. Live Migration
- B. Snapshots
- C. VHD Virtual Hard Disks
- D. Failover Cluster

Answer: B

Explanation:

Snapshots provide a fast and easy way to revert the virtual machine to a previous state.

NEW QUESTION 6

Which snap-in is used to create files that contain information about the state of your server's resources at a given time?

- A. Reliability and Performance Monitor
- B. Event Viewer
- C. Services
- D. System Monitor

Answer: A

Explanation:

Applies To: Windows Server 2008/2012

Windows Reliability and Performance Monitor is a Microsoft Management Console (MMC) snap-in that combines the functionality of previous stand-alone tools including Performance Logs and Alerts, Server Performance Advisor, and System Monitor. It provides a graphical interface for customizing performance data collection and Event Trace Sessions.

NEW QUESTION 7

You need to assign permissions to access resources.

Which type of group should you use?

- A. Workgroup
- B. Security group
- C. Organizational group
- D. Distribution group

Answer: B

Explanation:

security groups control access to the Workgroup server's functionality.

NEW QUESTION 8

Which provides centralized management of users and computers?

- A. Active Directory
- B. Windows Internet Name Service (WINS)
- C. Dynamic Host Configuration Protocol (DHCP)
- D. Remote Access

Answer: A

Explanation:

Active Directory (AD) is a directory service implemented by Microsoft for Windows domain networks. It is included in most Windows Server operating systems. An AD domain controller authenticates and authorizes all users and computers in a Windows domain type network—assigning and enforcing security policies for all computers and installing or updating software.

NEW QUESTION 9

What is the name for a stand-alone digital storage system connected directly to a server or workstation HBA?

- A. Small Computer System Interface (SCSI)
- B. Direct Attached Storage (DAS)
- C. Network Attached Storage (NAS)
- D. Storage Area Network (SAN)

Answer: A

Explanation:

The term HBA applies to a variety of interconnects, it is most commonly used with storage protocols such as Fibre Channel (FC) and serial-attached SCSI (SAS). Note: A host bus adapter (HBA) is a circuit board and/or integrated circuit adapter that provides input/output (I/O) processing and physical connectivity between a host system, or

server, and a storage and/or network device.

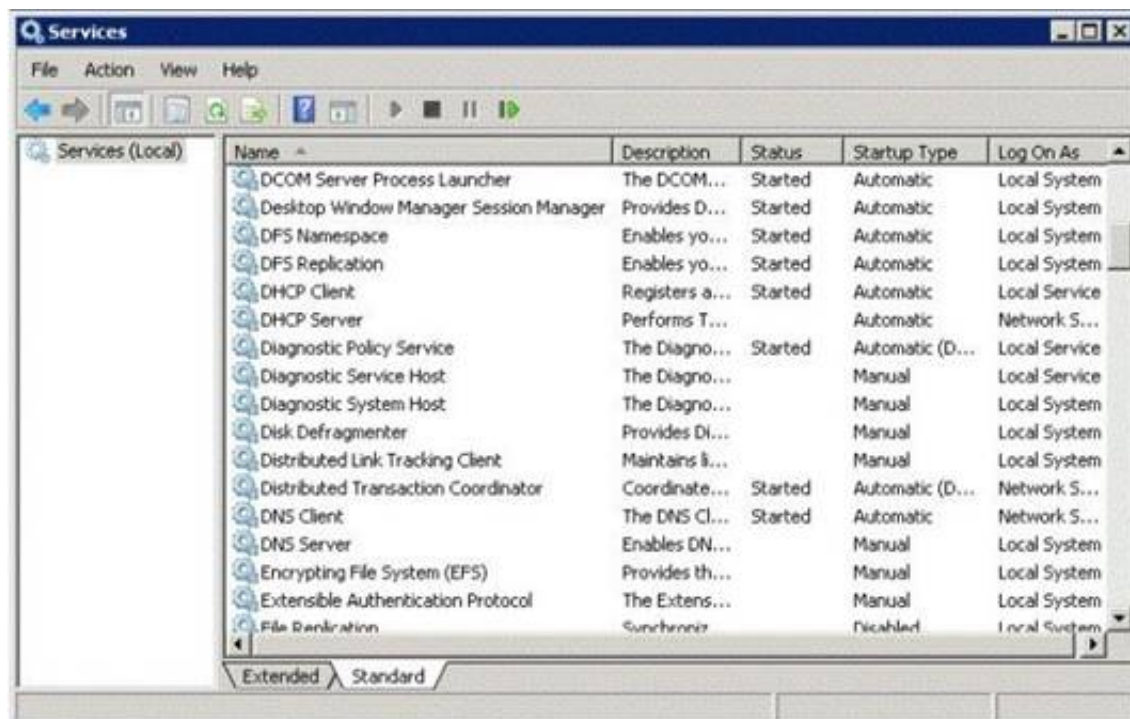
Reference: <http://searchstorage.techtarget.com/definition/host-bus-adapter>

NEW QUESTION 10**HOTSPOT**

You restart the Windows Server 2008 R2 server for your computer lab.

After the restart, a workstation cannot connect to any local network resource. Other workstations in the lab can connect to local network resources, but cannot browse the Internet.

The Services console is shown in the following image:



Use the drop-down menus to select the answer choice that completes each statement. Each correct selection is worth one point.

Answer Area

Changing the status of the DHCP Server service to **[answer choice]** allows the users to receive working IP addresses.

▼

Resume

Automatic

Started

Setting the DNS Server service startup type to **[answer choice]** restores name resolution services when the server is rebooted.

▼

Manual

Automatic

Started

- A. Mastered
- B. Not Mastered

Answer: A

Explanation:

Answer Area

Changing the status of the DHCP Server service to **[answer choice]** allows the users to receive working IP addresses.

▼

Resume

Automatic

Started

Setting the DNS Server service startup type to **[answer choice]** restores name resolution services when the server is rebooted.

▼

Manual

Automatic

Started

NEW QUESTION 10

Which two components are required to configure a TCP/IP connection? (Choose two)

- A. Subnet mask
- B. DHCP address
- C. Host address
- D. Domain name

Answer: AB

Explanation:

An IP address and a subnet mask.

NEW QUESTION 12

Which task can you accomplish by using Organizational Units?

- A. Apply shared folder permissions to users
- B. Place different domains in a centralized manageable environment
- C. Create a secondary Active Directory
- D. Logically represent a hierarchical structure of your company

Answer: D

Explanation:

A particularly useful type of directory object contained within domains is the organizational unit. Organizational units are Active Directory containers into which you can place users, groups, computers, and other organizational units. An organizational unit cannot contain objects from other domains.

An organizational unit is the smallest scope or unit to which you can assign Group Policy settings or delegate administrative authority. Using organizational units, you can create containers within a domain that represent the hierarchical, logical structures within your organization.

NEW QUESTION 17

What is the minimum number of disks required for RAID 5?

- A. 1
- B. 2
- C. 3
- D. 5

Answer: :C

Explanation:

You would need two disks for data and one for parity.

NEW QUESTION 21

The purpose of the Information Technology Infrastructure Library is to provide a:

- A. Set of standards for networking protocols.
- B. Set of best practices for managing IT services.
- C. Downloadable library of hardware drivers.
- D. Technical library of Windows infrastructure services.

Answer: B

Explanation:

The Information Technology Infrastructure Library (ITIL) is a set of practices for IT service management (ITSM) that focuses on aligning IT services with the needs of business.

NEW QUESTION 26

This question requires that you evaluate the underlined text to determine if it is correct.

The minimum permission needed to delete other users' documents from a print queue is "Print".

Select the correct answer if the underlined text does not make the statement correct. Select 'No change is needed' if the underlined text makes the statement correct.

- A. Manage Documents
- B. Manage Printers
- C. Deny
- D. No change is needed

Answer: A

Explanation:

Manage documents. If you have this permission, you can manage all jobs for a printer that are waiting in the print queue, including documents or files that are being printed by other users.

Incorrect:

Not D: With print permissions you can only delete your own documents.

Reference: <http://windows.microsoft.com/en-us/windows-vista/what-are-printer-permissions>

NEW QUESTION 30

Which is an advantage of 64-bit operating systems over 32-bit operating systems?

- A. Larger amounts of accessible RAM
- B. More device drivers
- C. More compatible applications
- D. Cheaper hardware

Answer: A

Explanation:

Can access a larger address space.

NEW QUESTION 35

The manager at the coffee house where you work asks for advice on adding storage to the store's server to perform backups.

The additional storage must meet the following requirements:

? Hold at least 600 GB

? Be reasonably priced

? Be reasonably fast

Which solution should you recommend?

- A. USB hard drive
- B. USB flash drive
- C. SCSI tape backup system
- D. External SCSI hard drive

Answer: C

NEW QUESTION 38

You need to manage a Windows Server 2008 server from a Windows client computer by using a Management Console.

What should you install on the client computer?

- A. Remote Assistance
- B. Remote Server Administration Tools
- C. Windows Server Resource Kit
- D. Microsoft Office SharePoint Server

Answer: B

Explanation:

Example: Remote Server Administration Tools for Windows 8.1 enables IT administrators to manage roles and features that are installed on computers that are running Windows Server 2012 or Windows Server 2012 R2 from a remote computer that is running Windows 8.1 Pro or Windows 8.1 Enterprise.

NEW QUESTION 43

By default, which group can create and link Group Policy Objects?

- A. Authenticated Users
- B. Domain Users
- C. Domain Administrators
- D. Local Administrators

Answer: :C

Explanation:

The Domain Administrators are the only people who can create GPOs by default.

NEW QUESTION 44

What is required to create a volume mount point?

- A. A dynamic disk
- B. RAID 1 implementation
- C. An NTFS file system volume or partition
- D. Extended volumes

Answer: C

Explanation:

A volume mount point can be placed in any empty folder of the host NTFS volume.

NEW QUESTION 47

Which technology is used to create and manage relational databases?

- A. Microsoft Exchange Server
- B. Microsoft Commerce Server
- C. Microsoft Groove Server
- D. Microsoft SQL Server

Answer: D

Explanation:

SQL Server databases are relational.

NEW QUESTION 51

This question requires that you evaluate the underlined text to determine if it is correct.

"Microsoft App-V" can make applications available to end user computers without having to install the applications on those computers.

Select the correct answer if the underlined text does not make the statement correct. Select 'No change is needed' if the underlined text makes the statement correct.

- A. Microsoft Hyper-V
- B. DirectAccess
- C. Windows Deployment Services
- D. No change is needed.

Answer: D

Explanation:

Microsoft Application Virtualization (MS App-V) platform allows applications to be deployed ("streamed") in real-time to any client from a virtual application server. It removes the need for traditional local installation of the applications.

Reference: http://en.wikipedia.org/wiki/Microsoft_App-V

NEW QUESTION 55

You need to manage your server remotely as if you were seated in front of it. Which tool should you use?

- A. Remote Desktop Client
- B. Remote Desktop Session Host
- C. Remote Desktop Gateway
- D. Remote Server Administration Tools

Answer: D

Explanation:

Example: Remote Server Administration Tools for Windows 8.1 enables IT administrators to manage roles and features that are installed on computers that are running Windows Server 2012 or Windows Server 2012 R2 from a remote computer that is running Windows 8.1 Pro or Windows 8.1 Enterprise.

NEW QUESTION 56

You manage a Workgroup. You need to create a group for print administrators. Which type of group should you create?

- A. Domain Local group
- B. Local group
- C. Global group
- D. Universal group

Answer: B

Explanation:

Many organizations deploy Windows servers and workstations in workgroup configurations and for these organizations, local group policies can play a vital role in simplifying Windows system administration.

Read more at http://tech.sportstoday.us/windows_server/windows-server-2008-r2---planning-workgroup-and-standalone-local-group-policy-configuration.aspx#iV1QJMxpiO0FVQyk.99

NEW QUESTION 59

To enable enhanced keyboard and mouse functions for a Hyper-V virtual machine, you need to install:

- A. Hyper-V Integration Components.
- B. Keyboard and mouse drivers.
- C. Microsoft Updates.
- D. Hyper-V Server.

Answer: A

Explanation:

To get a virtual machine (VM) to work properly, it's critical to install the Hyper-V integration components. These integration components install agents into a VM that enable a host to successfully back up a VM, recognize when it has gone down, copy and paste data into and out of a VM, and synchronize its clock to the host. These components are important to processing a VM's workload: In effect, their installation reconfigures an operating system to make it "aware" that it has been virtualized, resulting in an "enlightened" OS.

NEW QUESTION 64

HOTSPOT

For each of the following statements, select Yes if the statement is true. Otherwise, select No. Each correct selection is worth one point.

Answer Area

	Yes	No
A forest is a complete instance of Active Directory.	<input type="radio"/>	<input type="radio"/>
A leaf can have child objects.	<input type="radio"/>	<input type="radio"/>
A domain is a logical structure used for delegating authority over a collection of objects.	<input type="radio"/>	<input type="radio"/>

- A. Mastered
- B. Not Mastered

Answer: A

Explanation:

Answer Area

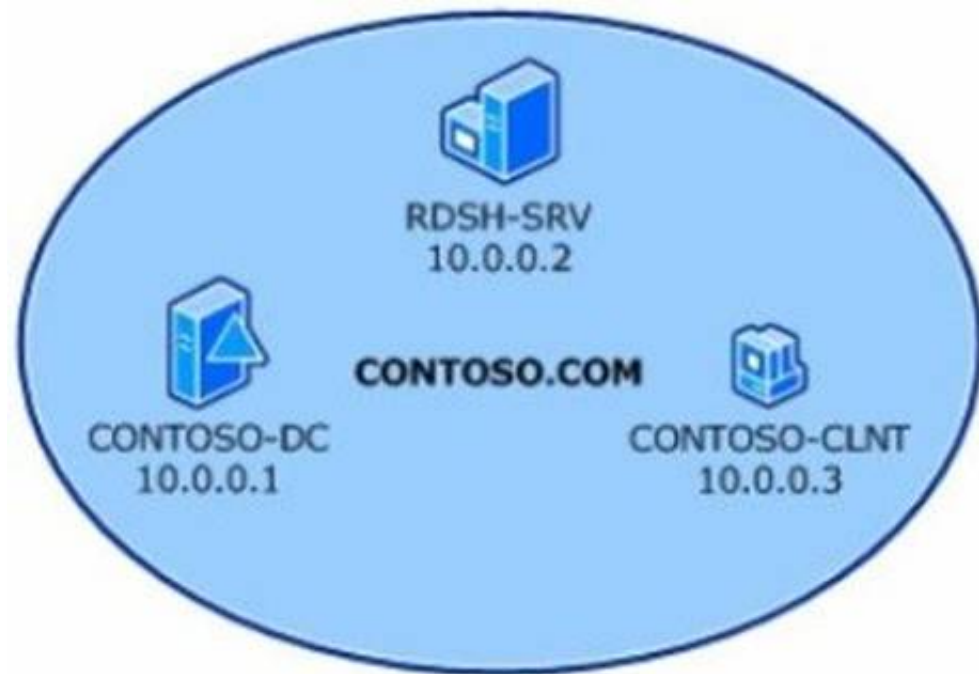
	Yes	No
A forest is a complete instance of Active Directory.	<input checked="" type="radio"/>	<input type="radio"/>
A leaf can have child objects.	<input type="radio"/>	<input checked="" type="radio"/>
A domain is a logical structure used for delegating authority over a collection of objects.	<input checked="" type="radio"/>	<input type="radio"/>

NEW QUESTION 69

HOTSPOT

You create a user account named user1 and an Active Directory Domain Services group named RDGroup in Active Directory Domain Services. The lab environment is shown in the following image:

Computer name	Operating system	Applications and services
RDSH-SRV	Windows Server 2008 R2	RD Session Host
CONTOSO-DC	Windows Server 2008 R2	Active Directory Domain Services, Domain Name System (DNS)
CONTOSO-CLNT	Windows® 7	Remote Desktop Connection



Use the drop-down menus to select the answer choice that completes each statement. Each correct selection is worth one point.

Answer Area

To enable only remote desktop access to the RDSH-SRV server for RDGroup, add RDGroup to the **[answer choice]** group on the host.

▼

Remote Desktop Users

Users

Administrators

To enable restricted access to the RDSH-SRV server for user1, add user1 to the **[answer choice]** group in Active Directory.

▼

RDGroup

Users

Administrators

- A. Mastered
- B. Not Mastered

Answer: A

Explanation:

Answer Area

To enable only remote desktop access to the RDSH-SRV server for RDGroup, add RDGroup to the **[answer choice]** group on the host.

▼

Remote Desktop Users

Users

Administrators

To enable restricted access to the RDSH-SRV server for user1, add user1 to the **[answer choice]** group in Active Directory.

▼

RDGroup

Users

Administrators

NEW QUESTION 74

Which should you use to manage the working environments of users and computers in an Active Directory infrastructure?

- A. Active Directory Domains and Trusts
- B. Group Policy Objects
- C. Builtin containers
- D. Global security groups

Answer: B

Explanation:

A Group Policy Object (GPO) is a collection of settings that define what a system will look like and how it will behave for a defined group of users or computers.

NEW QUESTION 79

You are logged in as an administrator. You need to recover company documents created by a person who has left the company. You get an "Access Denied" message when you try to access the folder.

What is the first step you should take to access the documents?

- A. Disable inheritance
- B. Take ownership
- C. Enable sharing
- D. Remove the "Read-Only" Attribute
- E. Enable offline files

Answer: B

Explanation:

The owner of the object controls how permissions are set on the object and to whom permissions are granted.

The Take Ownership permission on an object or the Restore files and directories user right are the minimum requirements to complete this procedure. Review the details in "Additional considerations" in this topic.

To take ownership of a file or folder

? Open Windows Explorer, and then locate the file or folder you want to take ownership of.

? Right-click the file or folder, click Properties, and then click the Security tab.

? Click Advanced, and then click the Owner tab.

? Click Edit, and then do one of the following:

? (Optional) To change the owner of all subcontainers and objects within the tree, select the Replace owner on subcontainers and objects check box.

NEW QUESTION 84

Users report that they are unable to print. What should you do first?

- A. Verify that the Print Spooler Service is running.
- B. Pause the Print Spooler service.
- C. Restart the Print Spooler service.
- D. Disable the Print Spooler Service.

Answer: C

Explanation:

Try to restart the Print Spooler.

NEW QUESTION 86

Which file storage system can be used on a Windows Server?

- A. NFS
- B. NTFS
- C. EXT3
- D. FAT16

Answer: B

NEW QUESTION 89

You need to see what effect the applied group policies are having on an individual user or computer.

What should you use?

- A. Local Users and Groups
- B. Resultant Set of Policy
- C. Local Security Policy
- D. Effective Permissions

Answer: D

Explanation:

If you would like to find out what permissions a user or group has on an object, you can use the Effective Permissions tool. It calculates the permissions that are granted to the specified user or group. The calculation takes the permissions in effect from group membership into account, as well as any permissions inherited from the parent object. It looks up all domain and local groups in which the user or group is a member.

NEW QUESTION 94

This question requires that you evaluate the underlined text to determine if it is correct. "Hardware-based RAID" uses system processing resources.

Select the correct answer if the underlined text does not make the statement correct. Select "No change is needed" if the underlined text makes the statement correct.

- A. Windows-based RAID
- B. RAID 10
- C. RAID 6
- D. No change is needed.

Answer: A

NEW QUESTION 99

Settings from which group policy object are processed first during logon?

- A. Domain
- B. Organizational Unit
- C. Local
- D. Site

Answer: C

Explanation:

Group Policy settings are processed in the following order:

? Local Group Policy object—Each computer has exactly one Group Policy object that is stored locally. This processes for both computer and user Group Policy processing.

? Site—Any GPOs that have been linked to the site that the computer belongs to are processed next. Processing is in the order that is specified by the administrator, on the Linked Group Policy Objectstab for the site in Group Policy Management Console (GPMC). The GPO with the lowest link order is processed last, and therefore has the highest precedence.

? Domain—Processing of multiple domain-linked GPOs is in the order specified by the administrator, on the Linked Group Policy Objects tab for the domain in GPMC. The GPO with the lowest link order is processed last, and therefore has the highest precedence.

? Organizational units—GPOs that are linked to the organizational unit that is highest in the Active Directory hierarchy are processed first, then GPOs that are linked to its child organizational unit, and so on. Finally, the GPOs that are linked to the organizational unit that contains the user or computer are processed.

Reference: Order of processing settings

<https://technet.microsoft.com/sv-se/library/cc778890%28v=ws.10%29.aspx>

NEW QUESTION 100

You need to control which Microsoft Office updates are automatically deployed to client computers. Which tool should you use?

- A. Microsoft Office SharePoint Services (MOSS)
- B. Windows Server Update Services (WSUS)
- C. Windows Update
- D. Microsoft Office Update

Answer: B

Explanation:

Windows Server Update Services (WSUS) enables information technology administrators to deploy the latest Microsoft product updates to computers that are running the Windows operating system. By using WSUS, administrators can fully manage the distribution of updates that are released through Microsoft Update to computers in their network.

NEW QUESTION 102

What must you install in order to host a Web site on a Windows Server?

- A. Active Directory Sites and Services
- B. Windows Internet Naming Service (WINS)
- C. Fully Qualified Domain Name (FQDN)
- D. Internet Information Server (IIS)

Answer: D

NEW QUESTION 106

Which task is executed during the Power-On Self Test (POST)?

- A. The amount of system RAM is detected.
- B. The Master Boot Record is created.
- C. The operating system is initialized.
- D. Disk file systems are detected.

Answer: A

Explanation:

The principal duties of the main BIOS during POST are as follows:

verify CPU registers

verify the integrity of the BIOS code itself

verify some basic components like DMA, timer, interrupt controller

(A) find, size, and verify system main memory initialize BIOS

pass control to other specialized BIOSes (if and when required) identify, organize, and select which devices are available for booting

NEW QUESTION 107

Which RAID level uses parity information to recover data from a failed disk?

- A. RAID 0
- B. RAID 1
- C. RAID 5
- D. RAID 10

Answer: :C

NEW QUESTION 109

A record of specific aspects of system performance over time is referred to as a/an:

- A. Threshold
- B. Log
- C. Event
- D. Alert

Answer: B

Explanation:

Working with Performance Logs

Applies To: Windows 7, Windows Server 2008 R2, Windows Server 2012, Windows Vista You can view log files or log data provided by a database in Performance Monitor to see a visual representation of performance data collected by Data Collector Sets.

NEW QUESTION 110

You need to install storage device drivers for a Windows boot partition. When should you do this?

- A. After you have started Windows for the first time
- B. Before creation of the RAID array
- C. During the post-boot phase
- D. During the installation phase

Answer: D

Explanation:

Example:

During the first phase of the Windows XP installation, Setup displays the following message at the bottom of the screen:

Press F6 if you have to install a third-party SCSI or RAID driver.

Press F6 and then follow the instructions to install a mass-storage device driver from your Original Equipment Manufacturer (OEM).

NEW QUESTION 115

A system error window keeps displaying.

Where do you find detailed information about that error?

- A. Event Viewer
- B. Resource Monitor
- C. Task Manager
- D. Device Manager

Answer: A

Explanation:

Event Viewer is a tool that displays detailed information about significant events (for example, programs that don't start as expected or updates that are downloaded automatically) on your computer. Event Viewer can be helpful when troubleshooting problems and errors with Windows and other programs.

Reference: windows.microsoft.com/en-us/windows/open-event-viewer

NEW QUESTION 118

Which technology uses digital certificates for secure communications over the Internet?

- A. Fully Qualified Domain Name (FQDN)
- B. Internet Service Manager (ISM)
- C. Secure Sockets Layer (SSL)
- D. File Transfer Protocol (FTP)

Answer: C

NEW QUESTION 119

Which two files are executed so that a Windows 2008 R2 server boots into the operating system? (Choose two.)

- A. winload.exe
- B. ntldr.exe
- C. bootmgr.exe
- D. boot.ini

Answer: AC

Explanation:

A: The Windows Boot Manager invokes winload.exe—the operating system boot loader—to load the operating system kernel executive (ntoskrnl.exe) and core device drivers. In that respect, winload.exe is functionally equivalent to the operating system loader function of NTLDR in prior versions of Windows NT.

C: Windows Vista and later operating systems replaced the NTLDR with the Windows Boot Manager (BOOTMGR). The BOOTMGR file is located in the 100 MB system partition automatically created during the Window 7 and Server 2008 R2 installation. In Windows Vista and Server 2008 the file is located in the System Partition. Once the computer is started the boot sector loads the BOOTMGR which in turn looks for an active partition.

Incorrect:

Not B, not D: In legacy operating systems the boot sector (boot strap loader) loads the NTLDR that would then look for the BOOT.INI.

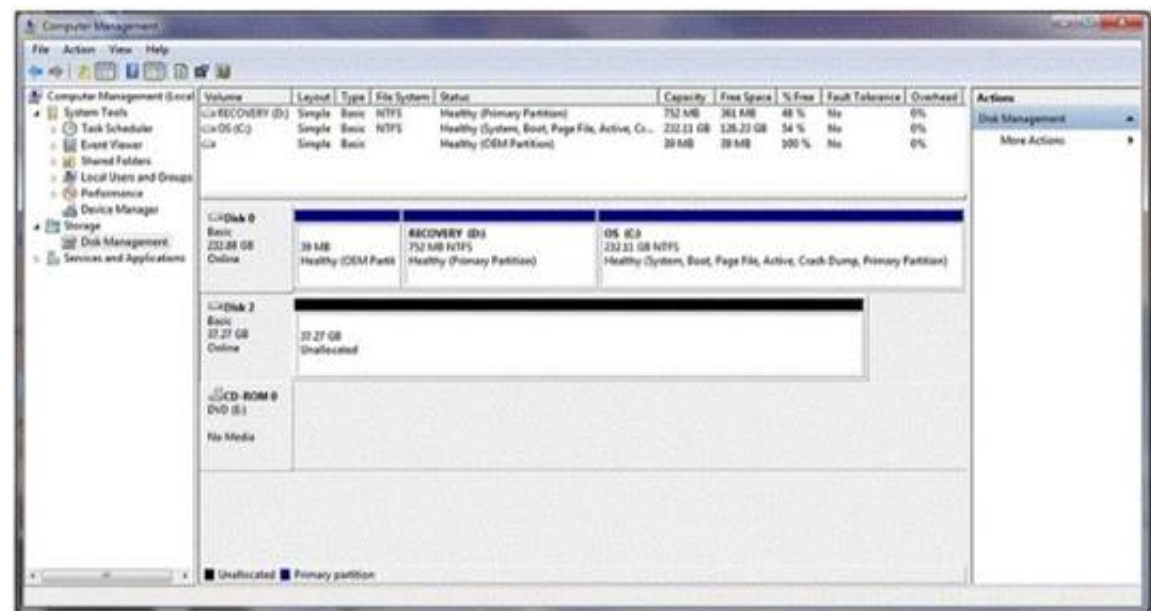
Reference: http://en.wikipedia.org/wiki/Windows_Vista_startup_process

NEW QUESTION 122

HOTSPOT

You buy a new USB hard drive for your server. After connecting the drive, you need to make this drive available to Windows.

In Computer Management Disk Management you see the drive, but it is not visible in Explorer's Computer view, as shown in the following image:



Use the drop-down menus to select the answer choice that completes each statement. Each correct selection is worth one point.

Answer Area

You should create a [answer choice] volume on Disk 2.

simple
spanned
striped

You should format Disk 2 as [answer choice] to support compression.

exFAT
FAT32
NTFS

- A. Mastered
- B. Not Mastered

Answer: A

Explanation:

Answer Area

You should create a [answer choice] volume on Disk 2.

simple
spanned
striped

You should format Disk 2 as [answer choice] to support compression.

exFAT
FAT32
NTFS

NEW QUESTION 125

Which Hyper-V network type shares the host's physical network adapter?

- A. External
- B. Public
- C. Private
- D. Internal

Answer: A

Explanation:

For Hyper-V host networking, the most common option is to create an external access virtual switch. This allows VMs on the host to access other systems on a traditional VLAN or standard switched network.

NEW QUESTION 129

You manage a company's Active Directory. You need to delegate the control of a branch office to a set of administrators. Where would you place the users and computers that belong to the branch office?

- A. In a distribution group
- B. In an Organizational Unit
- C. In the root of the domain
- D. In the Built-in container

Answer: B

NEW QUESTION 134

A small law firm hires you to set up its first file server. You decide to install Windows Server 2008 R2 on a custom-built computer purchased from a local computer

supplier. Early in the process, the installation prompts for storage drivers.
What are two possible ways to provide the drivers to the installation process? (Choose two.)

- A. Download the drivers, save them to the original installation DVD disk, and restart the installation process.
- B. Point the installation to a URL on the manufacturer's website.
- C. Place them in the root directory of a USB flash drive and insert the flash drive into a USB port.
- D. Burn them to a blank CD and insert it in place of the installation disk.

Answer: BD

Explanation:

Example for Windows 7 (handled in a similar way on Server 2008):
You might need to update the driver for your PC's storage controller. This driver controls how the hard drive interacts with the rest of the PC. To do this:
? Find the type of storage controller your PC uses by checking the documentation that came with your PC or going to the manufacturer's website.
? On a second PC, go to the manufacturer's website and download the latest driver on a USB flash drive or other removable media.
? Start Windows 7 installation again, and on the Where do you want to install Windows? page, click Load Driver.
? Insert the removable media containing the driver into your PC, and click OK.
? Select the driver from the list of results and then click Next. Follow the instructions on your screen to continue installing Windows 7.

NEW QUESTION 136

What is the default port for HTTPS?

- A. 21
- B. 80
- C. 135
- D. 443

Answer: D

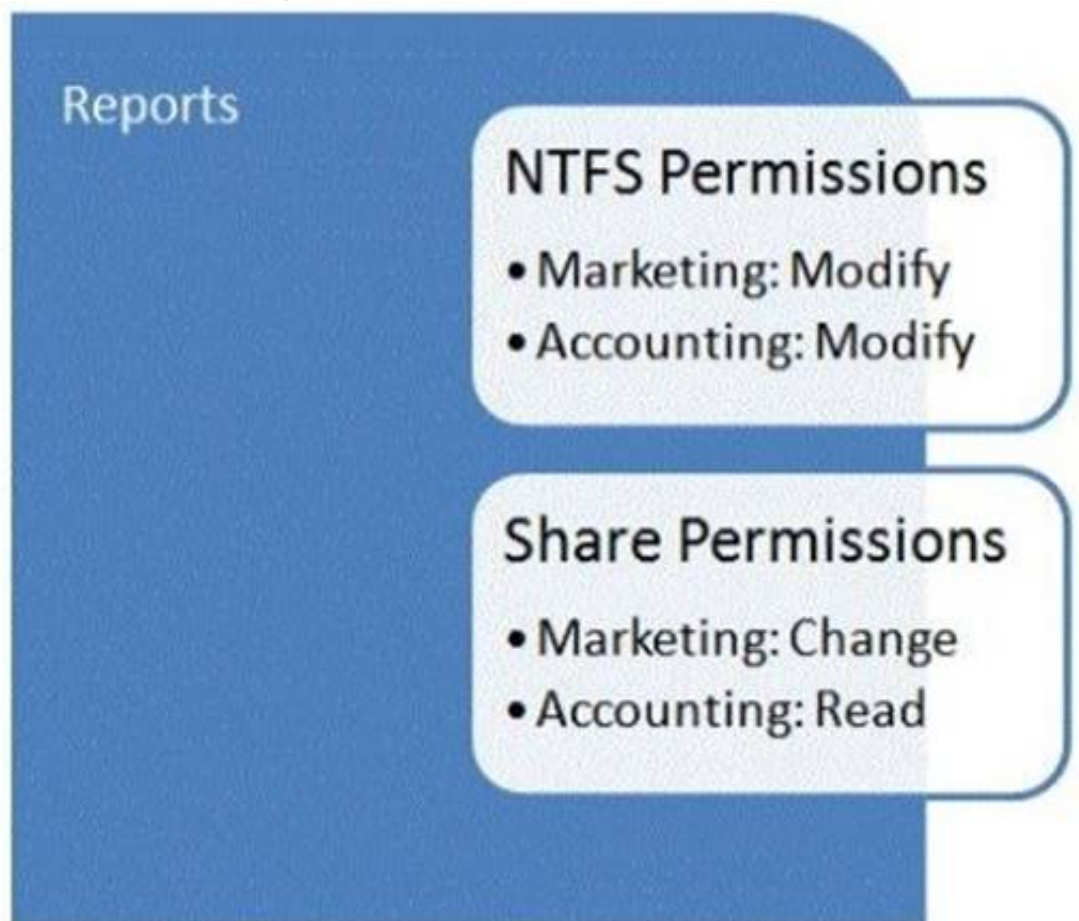
Explanation:

43, TCP, Hypertext Transfer Protocol over TLS/SSL (HTTPS)

NEW QUESTION 141

HOTSPOT

You are troubleshooting a permissions issue with the Reports share. The permissions are shown in the following image:



The groups connect to the share.
Use the drop-down menus to select the answer choice that answers each question. Each correct selection is worth one point.

Answer Area

Accounting

	▼
Read	
Modify	
Full Control	

Marketing

	▼
Read	
Modify	
Full Control	

- A. Mastered
- B. Not Mastered

Answer: A

Explanation:

Answer Area

Accounting	<div><div>Read</div><div>Modify</div><div>Full Control</div></div>
Marketing	<div><div>Read</div><div>Modify</div><div>Full Control</div></div>

NEW QUESTION 142

HOTSPOT

For each of the following statements, select Yes if the statement is true. Otherwise, select No. Each correct selection is worth one point.

Answer Area

	Yes	No
A Windows Server 2008 R2 server that has an operations master role must also be a domain controller.	<input type="radio"/>	<input type="radio"/>
A single Windows Server 2008 R2 server may only be assigned a maximum of one operations master role.	<input type="radio"/>	<input type="radio"/>
Some operations master roles are assigned per domain, while others only need to be assigned to the forest.	<input type="radio"/>	<input type="radio"/>

- A. Mastered
- B. Not Mastered

Answer: A

Explanation:

Answer Area

	Yes	No
A Windows Server 2008 R2 server that has an operations master role must also be a domain controller.	<input checked="" type="radio"/>	<input type="radio"/>
A single Windows Server 2008 R2 server may only be assigned a maximum of one operations master role.	<input type="radio"/>	<input checked="" type="radio"/>
Some operations master roles are assigned per domain, while others only need to be assigned to the forest.	<input checked="" type="radio"/>	<input type="radio"/>

NEW QUESTION 143

You need to restart the print spooler on a Windows Server 2008 R2 server. Which tool should you use?

- A. Devices and Printers
- B. The Device Manager
- C. Printer Properties
- D. The Services console

Answer: D

Explanation:

You can restart a service from the Services applet (available in Administrative Tools).

NEW QUESTION 145

Which type of license is required to connect remotely to an application?

- A. Windows Server External Connector License
- B. Remote Desktop Services Client Access License

C. System Center Operations Manager Client Management License
D. Remote Server Application License

Answer: B

Explanation:

Remote Desktop Services Client Access License is used to access applications on a Windows server.

NEW QUESTION 147

.....

Thank You for Trying Our Product

* 100% Pass or Money Back

All our products come with a 90-day Money Back Guarantee.

* One year free update

You can enjoy free update one year. 24x7 online support.

* Trusted by Millions

We currently serve more than 30,000,000 customers.

* Shop Securely

All transactions are protected by VeriSign!

100% Pass Your 98-365 Exam with Our Prep Materials Via below:

<https://www.certleader.com/98-365-dumps.html>