

## NCA-5.20 Dumps

### Nutanix Certified Associate (NCA) 5.20 Exam

<https://www.certleader.com/NCA-5.20-dumps.html>



**NEW QUESTION 1**

Which Nutanix cluster component is responsible for the cluster configuration?

- A. Cassandra
- B. Stargate
- C. Zookeeper
- D. Zeus

**Answer: C**

**NEW QUESTION 2**

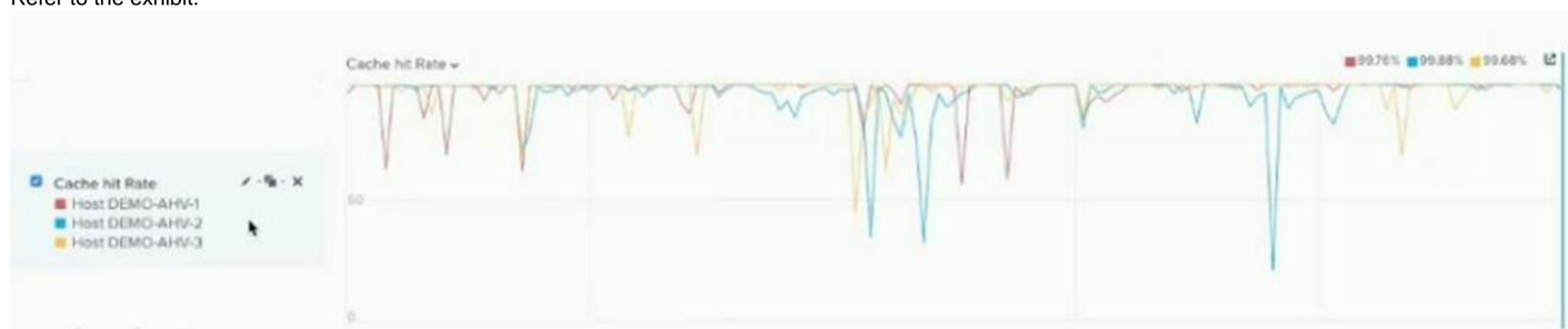
A new Project is being rolled out to an AHV cluster being monitored by Prism Central. The applications team indicates that the application managed by the project is very memory intensive. The administrator wants to be notified about any memory constraints, should they occur. How would an administrator most effectively achieve this task?

- A. Search for the VM, then in the Details page go to metrics and select CPU Usage.
- B. Create a new Metric chart for the duster, and analyze Hypervisor Memory Usage.
- C. Create a Report to tracking the Memory Usage.
- D. Create a new Alert Policy for Memory Usage and set to Critical after 80%.

**Answer: D**

**NEW QUESTION 3**

Refer to the exhibit:



Based on the exhibit what can be definitively determined about Host DEMO-AHV-2'

- A. it has performed more on-disk lookups than the other nodes.
- B. It's cache is undersized compared to the other nodes.
- C. The system memory is undersized.
- D. It is hosting a higher quantity of VMs than the other nodes.

**Answer: A**

**NEW QUESTION 4**

An administrator has been asked to add 200 virtual machines to their existing Nutanix cluster. Which Nutanix product will help them plan for this addition capacity?

- A. Beam
- B. Prism Pro
- C. Era
- D. Calm

**Answer: B**

**NEW QUESTION 5**

An administrator needs to provide users access to Prism Central Projects Which source of user accounts must the administrator use?

- A. Open LDAP
- B. Active Directory
- C. Local users
- D. SAML2 Provider

**Answer: B**

**NEW QUESTION 6**

Which Component Allows you to pair sites for disaster Recovery Policy Creation Using Nutanix Leap?

- A. Availability Zones
- B. Protection Domains
- C. Recovery Plans
- D. Protection Policies

**Answer: A**

**NEW QUESTION 7**

An administrator has a physical server that provides Active Directory service. IT has been hesitant to virtualize it due to its mission critical nature. What can the administrator do to ensure that Active Directory experiences the least downtime when hosted on Nutanix?

- A. Mark the VM as an Agent VM.
- B. Configure Runbook to power on the VM first.
- C. Turn off IPAM for the VM's VLAN.
- D. Turn off Live Migration for the VM.

**Answer: A**

**NEW QUESTION 8**

Which Task is Required to initiate a live migration of VMs between two cluster?

- A. Replicate VM Recovery Point
- B. Promote Metro Availability Protection Domain
- C. Press Migrate Button on the Protection Domain
- D. Perform a Leap Planned Failover

**Answer: C**

**NEW QUESTION 9**

Which Nutanix cluster component is responsible for triggering data movement events between SSD and HDD tiers?

- A. Genesis
- B. ILM
- C. Cassandra
- D. OpLog

**Answer: B**

**NEW QUESTION 10**

Refer to the exhibit.



An administrator reviews the error in the exhibit then examines the state of the cluster. The administrator finds that the AHV host is up and functional, but the cluster capacity is low.

What will happen to the VMs on the host with this Controller VM?

- A. They will reboot onto other nodes in the cluster.
- B. They will shut down and be orphaned on the host.
- C. They will remain on the current host.
- D. They will be shut down unless protected by a Protection Policy.

**Answer: A**

**NEW QUESTION 10**

Which two Protection Domain features require a configured schedule of less than 15 minutes? (Choose two.)

- A. Metro Availability DR
- B. Synchronous DR
- C. Asynchronous DR
- D. NearSyncRD

**Answer: AD**

**NEW QUESTION 14**

An application owner had reported that an AHV-based critical application VM is performing very slowly. After initial diagnostics, it has been observed that the CPU utilization is significantly higher than normal.

What two actions should the administrator take on this VM without shutting it down? (Choose two.)

- A. Increase number of vCPU in Prism Element
- B. Configure additional cores in acli
- C. Ensure CPU hot-add is supported by the Guest
- D. Use PrismElement to increase the number of cores

**Answer: AC**

**NEW QUESTION 19**

Assuming Sufficient Storage Capacity , how long are entities kept in the prism recycle bin?

- A. 8 hours
- B. 24 hours
- C. 1 week
- D. 1 month

**Answer: B**

**NEW QUESTION 23**

An administrator is experiencing an issue and needs to enable access for Nutanix support to login. What should the administrator do to meet this requirement?

- A. Enable Remote Support from Prism Element
- B. Enable SSH
- C. Enable Pulse
- D. Enable Remote Support from Prism Central

**Answer: A**

**NEW QUESTION 28**

An administrator is managing two AHV and vSphere-based clusters. The administrator is able to install a Windows Guest OS from an ISO Image to VMware VMs, but is unable to do the same activity with AHV VMs. What should the administrator do to successfully perform this action with AHV VMs?

- A. Verify cluster iSCSI Data Services IP
- B. Provide virtIO Drivers
- C. Manage Nutanix Guest Tools
- D. Change VM settings from BIOS to UEFI

**Answer: B**

**NEW QUESTION 32**

An administrator needs to replace a node in a three-node cluster. The health status for the environment is good and the cluster is able to support a single node failure. Which step must be performed first?

- A. Remove the failed node from the cluster
- B. Verify hypervisor versions
- C. Plug in all network cables
- D. Expand the cluster with the new node

**Answer: D**

**NEW QUESTION 36**

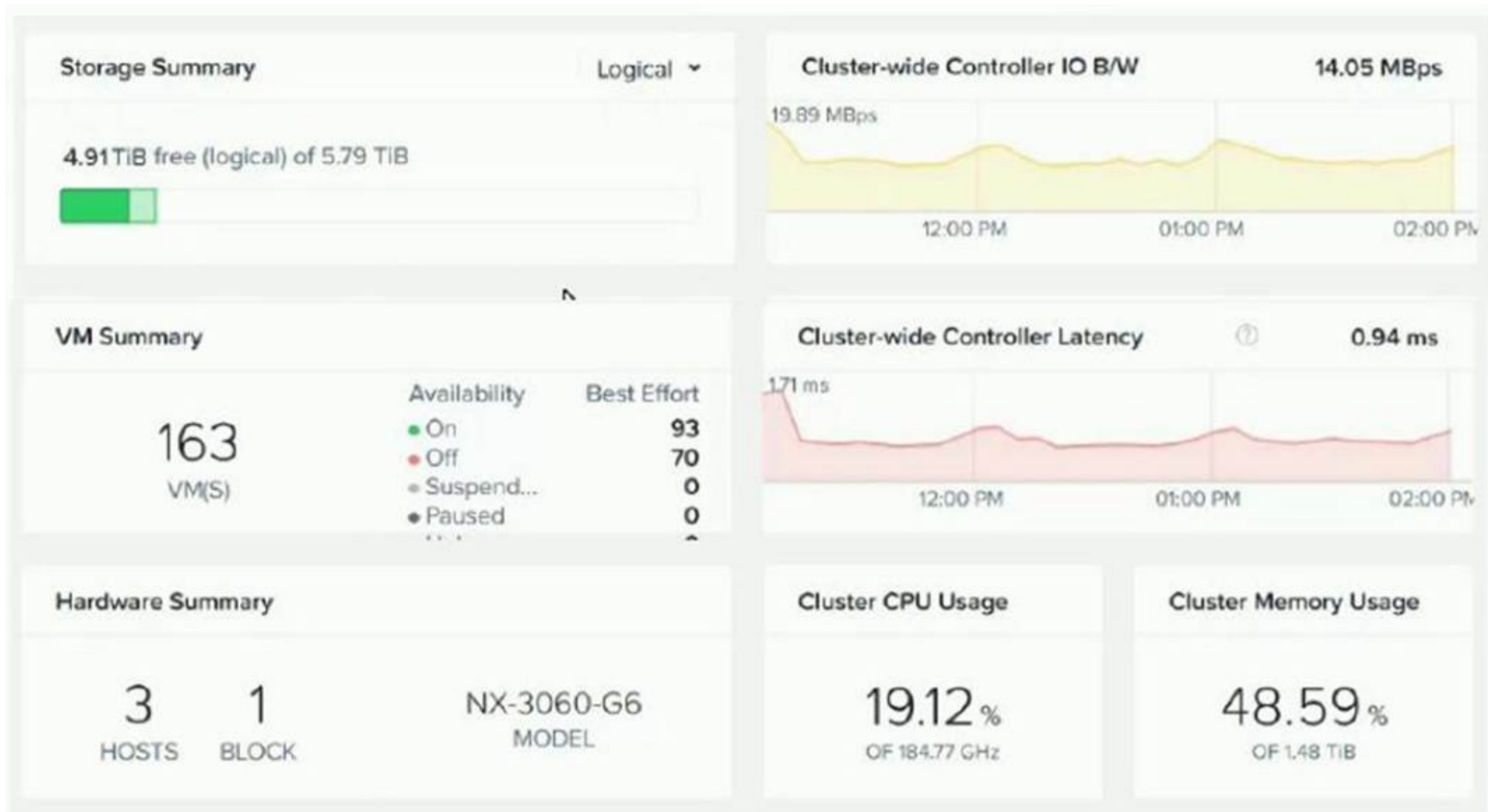
An administrator recently installed Prism Central to use Categories. After having created Categories and Values, the administrator needs to apply these Categories to multiple workloads. How can the administrator easily perform this task?

- A. Create a Playbook to automate the process
- B. Choose multiple VMs and select Manage Categories
- C. Go to Categories and select the VMs to be added
- D. Manage the VMs ownership

**Answer: B**

**NEW QUESTION 37**

Refer to the exhibit.



An administrator wants to make sure there are enough compute resources within the AHV- based Nutanix cluster during any maintenance operations or a node failure.

What configuration should the administrator change to achieve this task?

- A. Enable Degraded Node Detection
- B. Enable MA Reservation
- C. Reserve 33% CPU and 33% memory
- D. Set virtual machine affinity rules

**Answer: B**

**NEW QUESTION 40**

An administrator attempts to reinstall a VM's QuestOS, but is unable to change the legacy BIOS boot priority. Based on the exhibit, what is causing this issue?

- A. GuestOS reinstall is not possible for a VM
- B. The CD-ROM is empty
- C. The VM is currently on
- D. The VM is undergoing a snapshot

**Answer: C**

**NEW QUESTION 41**

An administrator has a SQL VM running, which is experiencing high disk latency. What could the administrator do to alleviate this?

- A. Increase CPU and Memory on the CVM
- B. Attach additional Volume Groups to the VM
- C. Add more CPU and Memory to the VM
- D. Create another Storage Container

**Answer: D**

**NEW QUESTION 44**

An administrator has been asked to investigate performance issues for a business critical application. The application runs on a single VM. What is the easiest way for the administrator to begin troubleshooting this issue?

- A. On the Analysis page, create an entity chart with all metrics included
- B. On the Health page, look for Critical or Warning alerts for the VM.
- C. Review the metrics charts on the Prism Element Home page
- D. Review the VM Performance tab for the VM in Prism Element

**Answer: A**

**NEW QUESTION 47**

An administrator has planned a RAM upgrade on a 3-node Nutanix cluster. Which step should be performed first for a non-disruptive memory upgrade?

- A. Stop one CVM at a time
- B. RunNCC

- C. Power off one host at time
- D. Live Migrate VMs

**Answer:** B

**NEW QUESTION 51**

Which statement best defines Replication Factor 2 (RF2)?

- A. Data will be written locally, and a second copy then will be replicated to another cluster
- B. Data will be written locally, and a second copy to another disk group
- C. Data will be written locally, and a second copy goes to a remote site
- D. Data will be written locally, and a second copy goes to another node in the same cluster

**Answer:** D

**NEW QUESTION 53**

A New Project is Being rolled out to an AHV Cluter being monitored by prism Central , The Application team indicated that the application managed by the project is very memory intensive . The administrator wants to be notified about any memory constraints should they occur. How would an administrator most effectively achieve this task?

- A. Create a new metric chart for the cluster and analyse hypervisor Memory Usage
- B. Search for the VM , then in the details page , go to metrics an select CPU usage.
- C. Create a Report to tracking the memory Usage
- D. Create a new alert policy for the memory Usage and set to critical after 80%.

**Answer:** D

**NEW QUESTION 55**

Which two Nutanix features offer the ability to restore a VM? (Choose two.)

- A. Data Protection
- B. Nutanix Leap
- C. Nutanix Flow
- D. Site Recovery Manager

**Answer:** AB

**NEW QUESTION 60**

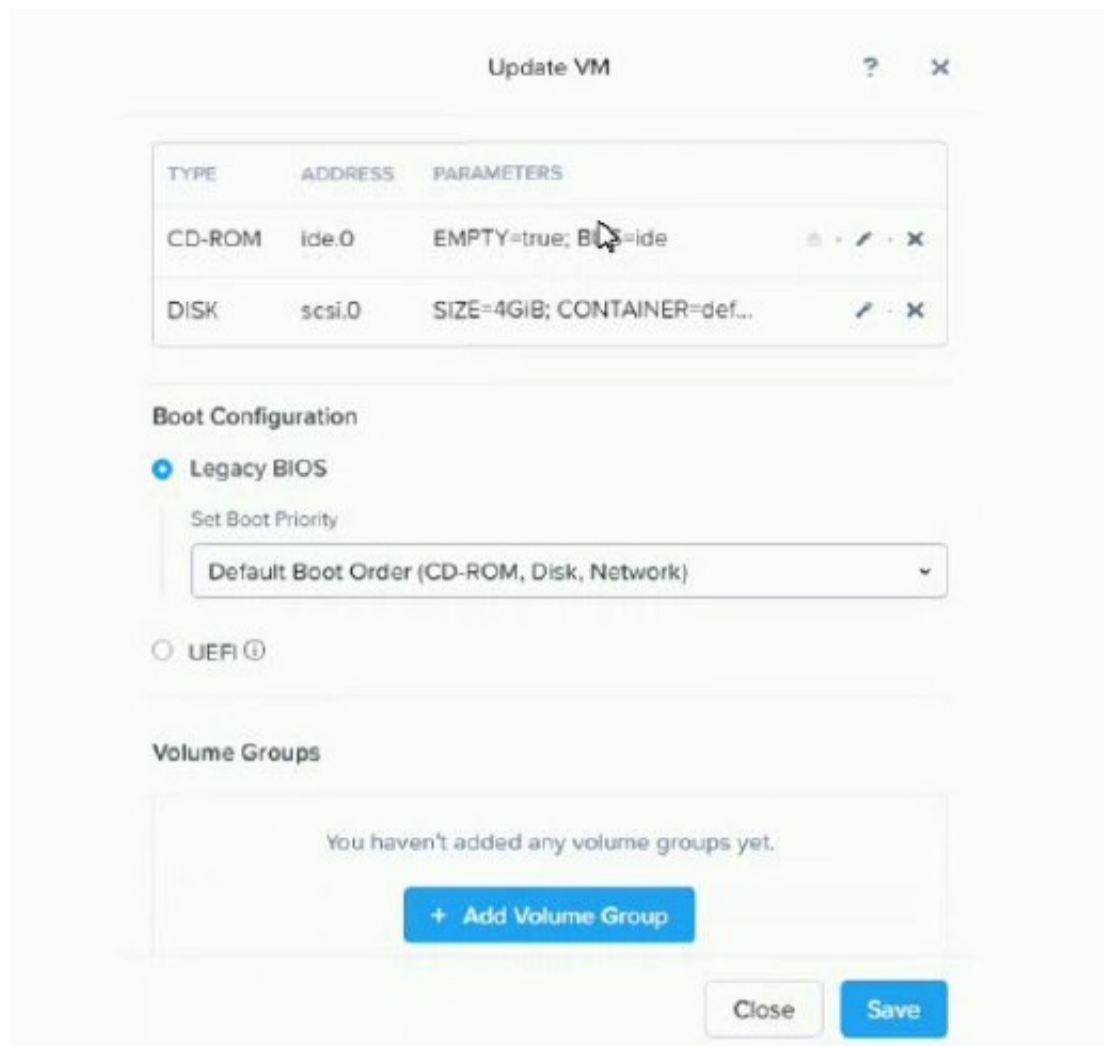
An Administrator Wants a VM to Communicate with two Separate VLANs. What steps should the administrator complete?

- A. Add a single NIC to the VM and Configure it for both VLANs
- B. Add two NICs to the VM and Configure one for each VLAN
- C. Turn on IPAM for autoconfiguration of VLANs
- D. Configure a security Policy to assign VLANs to the VM

**Answer:** B

**NEW QUESTION 64**

Refer to the exhibit.



A team member has built a CentOS VM image for use as a template. An administrator deploys a new VM using the CentOS image as the 05 drive. No other drives are presented to the VM.

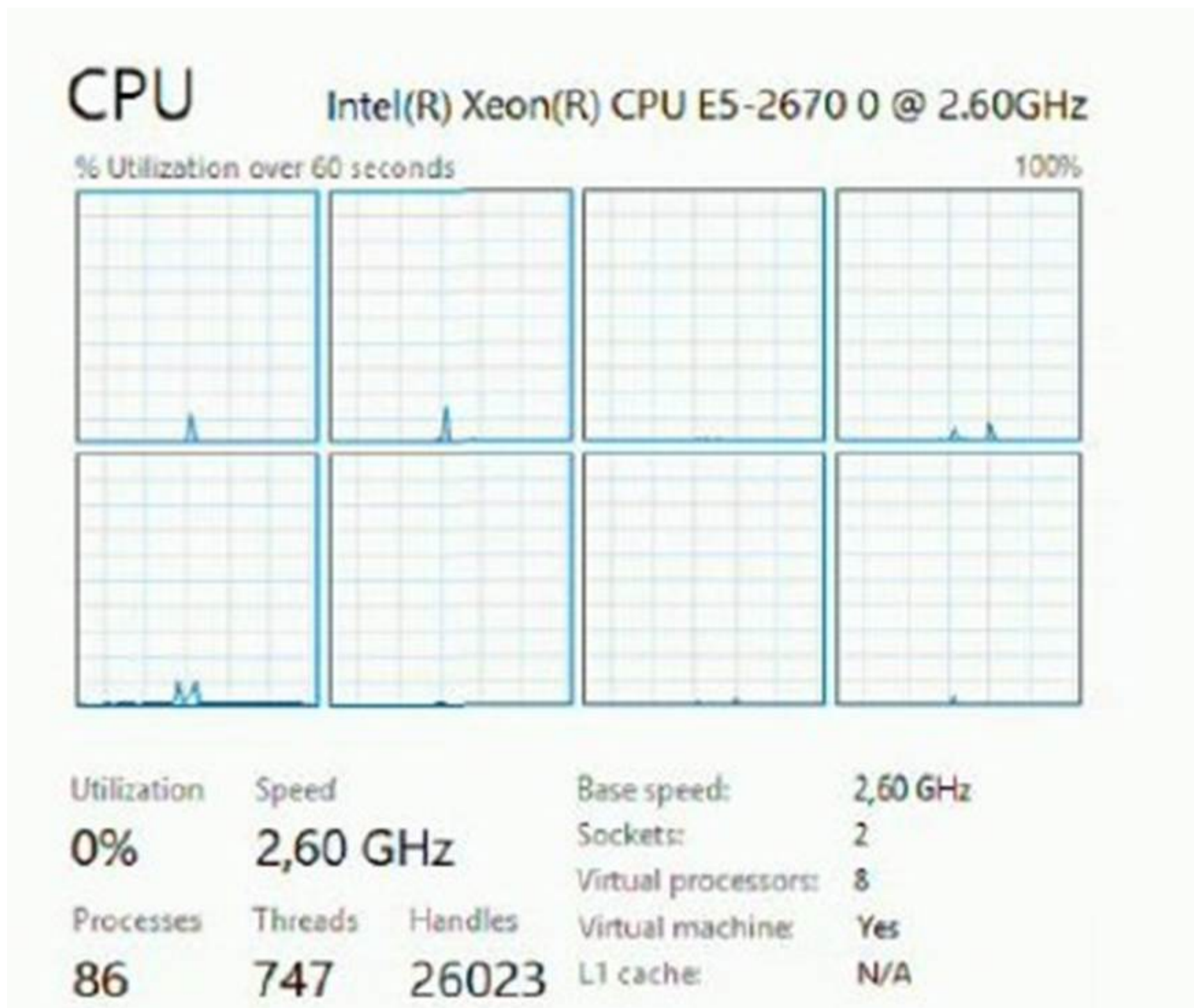
Following the deployment, the administrator attempts to boot the VM, but is unsuccessful. What could be causing this issue?

- A. The VMS Boot Priority must reference disk first before CD-ROW
- B. The VM's Disk (scsi.O) setting must be set to make this disk bootable
- C. No Volume Groups have been created for the VM
- D. The CentOS VM image was built with UEF:

**Answer:** D

**NEW QUESTION 69**

Refer to the exhibit.



An administrator needs to upgrade a VM to 10 virtual processors. Which action should the administrator take to complete this task?

- A. Power-off the VM and add one vCPU
- B. Update the VM adding two vCPUs
- C. Update the VM adding two cores
- D. Power-off the VM and add one core

**Answer: C**

**NEW QUESTION 70**

An Administrator has created a Volume Group for a specific VM on an AHV Cluster. What is the next step required to use vDisk in the VM?

- A. Attach the Volume Group to the VM
- B. Configure CHAP Authentication
- C. Reboot the VM
- D. Bring the disk Online

**Answer: A**

**NEW QUESTION 75**

An administrator needs to expand a Nutanix cluster that is tagging the network traffic at the CVM and AHV level. However, the administrator doesn't remember the configured VLAN ID.

Which command can the administrator run to find the correct VLAN ID from the CVM?

- A. ifconfig
- B. manage-ovs
- C. acli
- D. ovs-vsctl

**Answer: D**

**NEW QUESTION 76**

Which Nutanix Product Provide S3-Compatible Storage ?

- A. Volumes
- B. Files
- C. Objects
- D. Mine

**Answer:** C

**NEW QUESTION 81**

Refer to the exhibit.

The screenshot shows a dialog box titled "Data Resiliency Status" with a question mark and a close button (X) in the top right corner. Below the title bar, it says "FAULT DOMAIN TYPE: HOST". The main content is a table with three columns: "COMPONENT", "FAILURES TOLERABLE", and "MESSAGE".

COMPONENT	FAILURES TOLERABLE	MESSAGE
Static Configuration	1	
ZooKeeper	0	Desired fault tolerance for Zookeeper is 1 but we can tolerate only 0 node failure(s)
Stargate Health	1	
Oplog	1	
Metadata	1	
Extent Groups	1	
Erasur Code Strip Size	1	
Free Space	1	

At the bottom right of the dialog box, there is a blue button labeled "Close".

An administrator notices that the Data Resiliency Status of some components has been reduced to 0, making it impossible to support a node failure in the cluster. What failed component caused this issue?

- A. CVM
- B. Disk
- C. Node
- D. Block

**Answer:** A

**NEW QUESTION 84**

An administrator wants to evaluate the overall health of the Nutanix cluster. What should be the first step?

- A. Run NCC
- B. Run Log Collector
- C. Run Xi Beam
- D. Run LCM

**Answer:** A

**NEW QUESTION 88**

An administrator needs to upgrade AOS for an air gapped cluster by using Prism Element. Which two actions allow the administrator to perform the upgrade? Choose Two

- A. Extract the AOS binaries to the CVM
- B. Manually Upload Binaries to a local http server
- C. Manually Upload AOS binaries and metadata
- D. Use the LCM dark site Option Providing AOS Binaries

**Answer:** CD

**NEW QUESTION 93**

An Administrator wants to copy some virtual machine disk files to ADSF from an external VMware ESXI Host. Which two action should the administrator take to complete this task? choose two

- A. Enable CHAP on Volume Group
- B. Mount container as NFS on External host
- C. Configure Whitelist on container
- D. Configure Volume Group

**Answer:** BC

**NEW QUESTION 94**

.....

## Thank You for Trying Our Product

\* 100% Pass or Money Back

All our products come with a 90-day Money Back Guarantee.

\* One year free update

You can enjoy free update one year. 24x7 online support.

\* Trusted by Millions

We currently serve more than 30,000,000 customers.

\* Shop Securely

All transactions are protected by VeriSign!

**100% Pass Your NCA-5.20 Exam with Our Prep Materials Via below:**

<https://www.certleader.com/NCA-5.20-dumps.html>