

Microsoft

Exam Questions 98-361

Microsoft MTA Software Development Fundamentals



NEW QUESTION 1

- (Topic 1)

This question requires that you evaluate the underlined text to determine if it is correct. The default entry point for a console application is the Class method.

Select the correct answer if the underlined text does not make the statement correct. Select

"No change is needed" if the underlined text makes the statement correct.

- A. No change is needed
- B. Main
- C. Program
- D. Object

Answer: B

Explanation:

The default entry point for a console application is the Class Main.

NEW QUESTION 2

- (Topic 1)

All objects in .NET inherit from which item?

- A. the System.Object class
- B. a value type
- C. a reference type
- D. the System.Type class

Answer: A

Explanation:

The System.Object class supports all classes in the .NET Framework class hierarchy and provides low-level services to derived classes. This is the ultimate base class of all classes in the .NET Framework; it is the root of the type hierarchy.

NEW QUESTION 3

- (Topic 1)

You are creating an application that presents users with a graphical interface in which they can enter data. The application must run on computers that do not have network connectivity.

Which type of application should you choose?

- A. Console-based
- B. Windows Forms
- C. Windows Service
- D. ClickOnce

Answer: B

Explanation:

Use Windows Forms when a GUI is needed.

NEW QUESTION 4

- (Topic 1)

You are creating a routine that will perform calculations by using a repetition structure. You need to ensure that the entire loop executes at least once.

Which looping structure should you use?

- A. For
- B. While
- C. Do„While
- D. Fo
- E. „Each

Answer: :C

Explanation:

In a Do..While loop the test is at the end of the structure, so it will be executed at least once.

NEW QUESTION 5

- (Topic 1)

You are creating an application for a help desk center. Calls must be handled in the same order in which they were received.

Which data structure should you use?

- A. Binary tree
- B. Stack
- C. Hashtable
- D. Queue

Answer: D

Explanation:

A queue keeps the order of the items.

NEW QUESTION 6

- (Topic 1)

You have a class with a property.

You need to ensure that consumers of the class can write to the value of the property. Which keyword should you use?

- A. value
- B. add
- C. get
- D. set

Answer: D

Explanation:

Set:

The set { } implementation receives the implicit argument "value." This is the value to which the property is assigned.

* Property. On a class, a property gets and sets values. A simplified syntax form, properties are implemented in the IL as methods (get, set).

NEW QUESTION 7

- (Topic 1)

This question requires that you evaluate the underlined text to determine if it is correct. Converting an object to a more general type is called upcasting.

Select the correct answer if the underlined text does not make the statement correct. Select "No change is needed" if the underlined text makes the statement correct.

- A. No change is needed
- B. downcasting
- C. interfacing
- D. flexing

Answer: :A

Explanation:

Casting up a hierarchy means casting from a derived object reference to a base object reference.

NEW QUESTION 8

- (Topic 1)

You are creating the necessary variables for an application. The data you will store in these variables has the following characteristics:

? Consists of numbers

? Includes numbers that have decimal points

? Requires more than seven digits of precision

You need to use a data type that will minimize the amount of memory that is used. Which data type should you use?

- A. decimal
- B. double
- C. byte
- D. float

Answer: B

Explanation:

The double keyword signifies a simple type that stores 64-bit floating-point values.

Precision: 15-16 digits

Incorrect:

Not D: The float keyword signifies a simple type that stores 32-bit floating-point values. Precision: 7 digits

NEW QUESTION 9

- (Topic 1)

You are writing a Web application that processes room reservation requests. You need to

verify that the room that a guest has selected is not already reserved by another guest.

Which type of programming should you use to determine whether the room is still available when the request is made?

- A. functional
- B. dynamic
- C. in-browser
- D. server-side

Answer: D

NEW QUESTION 10

DRAG DROP - (Topic 1)

You are extending an application that stores and displays the results of various types of foot races. The application contains the following definitions:

```
public interface IDisplayResult
{
    void Display();
}

public class Race
{
    public int Seconds;

    public virtual void Display()
    {
        Console.WriteLine(Seconds);
    }
}
```

The following code is used to display the result for a race:

```
var r1 = new FootRace();
var r2 = r1 as IDisplayResult;
r1.Seconds = 99;
```

```
r1.Display();
r2.Display();
r1.DisplayRaw();
```

The contents of the console must be as follows:

- ? 99 seconds
- ? 1.65 minutes
- ? 99

You need to implement the FootRace class.

Match the method declaration to the method body, (To answer, drag the appropriate declaration from the column on the left to its body on the right. Each declaration may be used once, more than once, or not at all. Each correct match is worth one point.)

Code Segments	Answer Area
<div>public override void Display()</div>	<pre>public class FootRace : Race, IDisplayResult { Code Segment { Console.WriteLine(Seconds + " seconds"); } Code Segment { base.Display(); } Code Segment { Console.WriteLine(Seconds / 60d + " minutes"); } }</pre>
<div>public void DisplayRaw()</div>	
<div>void IDisplayResult.Display()</div>	
<div>private void Display()</div>	

- A. Mastered
- B. Not Mastered

Answer: A

Explanation:

Code Segments	Answer Area
<div>public override void Display()</div>	<pre>public class FootRace : Race, IDisplayResult { public override void Display() { Console.WriteLine(Seconds + " seconds"); } public void DisplayRaw() { base.Display(); } void IDisplayResult.Display() { Console.WriteLine(Seconds / 60d + " minutes"); } }</pre>
<div>public void DisplayRaw()</div>	
<div>void IDisplayResult.Display()</div>	
<div>private void Display()</div>	

Which function does Simple Object Access Protocol (SOAP) provide when using Web services?

- A. directory of registered Web services
- B. communications protocol
- C. security model
- D. model for describing Web services

Answer: B

Explanation:

SOAP, originally defined as Simple Object Access Protocol, is a protocol specification for exchanging structured information in the implementation of web services in computer networks. It relies on XML Information Set for its message format, and usually relies on other application layer protocols, most notably Hypertext Transfer Protocol (HTTP) or Simple Mail Transfer Protocol (SMTP), for message negotiation and transmission.

NEW QUESTION 11

- (Topic 1)

In the life cycle of an ASP. NET Web page, which phase follows the SaveStateComplete phase?

- A.PostBack
- B. PostInit
- C. Load
- D. Render

Answer: D

Explanation:

The SaveStateComplete event is raised after the view state and control state of the page and controls on the page are saved to the persistence medium. This is the last event raised before the page is rendered to the requesting browser.

NEW QUESTION 15

HOTSPOT - (Topic 1)

You are reviewing the following class that is used to manage the results of a 5K race:

```
public class Player
{
    private string _name;
    public const string Key = "player";

    public bool MatchName(string searchTerm)
    {
        return _name.ToLower() == searchTerm;
    }

    public void SetResult(int rank, string name)
    {
        if (_name != null)
            return;

        Ranking = rank;
        _name = name;
    }

    public int Ranking { get; private set; }
}
```

For each of the following statements, select Yes if the statement is true. Otherwise, select No. Each correct selection is worth one point.

Answer Area

Description of Behavior	Yes	No
You can only set the player’s ranking once.	<input type="radio"/>	<input type="radio"/>
If you call the MatchName method, the code will throw an exception.	<input type="radio"/>	<input type="radio"/>
You can change Key from “player” to “racer”.	<input type="radio"/>	<input type="radio"/>

- A. Mastered
- B. Not Mastered

Answer: A

Explanation:

Answer Area

Description of Behavior	Yes	No
You can only set the player’s ranking once.	<input checked="" type="radio"/>	<input type="radio"/>
If you call the MatchName method, the code will throw an exception.	<input checked="" type="radio"/>	<input type="radio"/>
You can change Key from “player” to “racer”.	<input type="radio"/>	<input checked="" type="radio"/>

NEW QUESTION 16

- (Topic 1)

You are designing a class for an application. You need to restrict the availability of the member variable accessCount to the base class and to any classes that are derived from the base class.

Which access modifier should you use?

- A. Internal
- B. Protected
- C. Private
- D. Public

Answer: C

NEW QUESTION 20

- (Topic 1)

You are designing a Windows Store application.

You need to design the application so that users can share content by connecting two or more devices by physically tapping the devices together.

Which user experience (UX) guideline for Windows Store applications should you use?

- A. Share and data exchange
- B. location-awareness
- C. device-awareness
- D. proximity gestures

Answer: A

NEW QUESTION 25

- (Topic 1)

Which two types of information should you include in an effective test case? (Choose two.)

- A. the expected result from testing the case
- B. multiple actions combined as a single step to test the case
- C. any pre-conditions necessary to test the case
- D. the stakeholders who originated the test case

Answer: AB

Explanation:

You can create manual test cases using Microsoft Test Manager that have both action and validation test steps. You can also share a set of common test steps between multiple test cases called shared steps. This simplifies maintenance of test steps if your application under test changes.

NEW QUESTION 29

HOTSPOT - (Topic 1)

For each of the following statements, select Yes if the statement is true. Otherwise, select No. Each correct selection is worth one point.

Answer Area

Description of Behavior	Yes	No
A queue's items are stored in the order they were added.	<input type="radio"/>	<input type="radio"/>
A queue is a first in, first out (FIFO) data structure.	<input type="radio"/>	<input type="radio"/>
A queue has a limited number of items.	<input type="radio"/>	<input type="radio"/>

- A. Mastered
- B. Not Mastered

Answer: A

Explanation:

Answer Area

Description of Behavior	Yes	No
A queue's items are stored in the order they were added.	<input checked="" type="radio"/>	<input type="radio"/>
A queue is a first in, first out (FIFO) data structure.	<input checked="" type="radio"/>	<input type="radio"/>
A queue has a limited number of items.	<input type="radio"/>	<input checked="" type="radio"/>

NEW QUESTION 30

- (Topic 1)

Which programming language is characterized as client-side, dynamic and weakly typed?

- A. JavaScript
- B. HTML
- C. ASP.NET
- D. C#

Answer: A

Explanation:

JavaScript is characterized as a dynamic, weakly typed, prototype-based language with first-class functions. It is primarily used in the form of client-side JavaScript for the development of dynamic websites.

NEW QUESTION 31

- (Topic 1)

How does a console-based application differ from a Windows Forms application?

- A. Console-based applications require the XNA Framework to run.
- B. Windows Forms applications do not provide a method for user input.
- C. Windows Forms applications can access network resources.
- D. Console-based applications do not display a graphical interface.

Answer: D

NEW QUESTION 32

- (Topic 1)

The purpose of the Finally section in an exception handler is to:

- A. Execute code regardless of whether an exception is thrown.
- B. Conclude the execution of the application.
- C. Execute code only when an exception is thrown.
- D. Break out of the error handler.

Answer: A

Explanation:

By using a finally block, you can clean up any resources that are allocated in a try block, and you can run code even if an exception occurs in the try block. Typically, the statements of a finally block run when control leaves a try statement. The transfer of control can occur as a result of normal execution, of execution of a break, continue, goto, or return statement, or of propagation of an exception out of the try statement.

NEW QUESTION 35

- (Topic 1)

This question requires that you evaluate the underlined text to determine if it is correct.

The process of transforming compiled C# code into an XML string for a web service is known as deserialization.

Select the correct answer if the underlined text does not make the statement correct. Select "No change is needed" if the underlined text makes the statement correct.

- A. No change is needed
- B. serialization
- C. decoding
- D. encoding

Answer: B

Explanation:

Serialization is the process of converting an object into a stream of bytes in order to store the object or transmit it to memory, a database, or a file. Its main purpose is to save the state of an object in order to be able to recreate it when needed.

Serialization allows the developer to save the state of an object and recreate it as needed, providing storage of objects as well as data exchange. Through serialization, a developer can perform actions like sending the object to a remote application by means of a Web

Service, passing an object from one domain to another, passing an object through a firewall as an XML string, or maintaining security or user-specific information across applications.

NEW QUESTION 38

- (Topic 1)

You plan to create an application for your company. The application will run automated routines and write the results to a text-based log file. Little or no user interaction is required.

Security requirements on the host computers prevent you from running applications on startup, and users must be able to see the status easily on the screen. The host computers also have limited memory and monitors that display only two colors. These computers will have no network connectivity.

Which type of application should you use for this environment?

- A. Directx
- B. Windows Service
- C. console-based
- D. Windows Store app

Answer: C

Explanation:

Building Console Applications

Applications in the .NET Framework can use the System.Console class to read characters from and write characters to the console. Data from the console is read from the standard input stream, data to the console is written to the standard output stream, and error data to the console is written to the standard error output stream.

NEW QUESTION 43

- (Topic 1)

You have a table named ITEMS with the following fields:

? ID (integer, primary key, auto generated)

? Description (text)

? Completed (Boolean)

You need to insert the following data in the table:

"Cheese", False

Which statement should you use?

- A. INSERT INTO ITEMS (ID, Description, Completed) VALUES (1, 'Cheese', 0)
- B. INSERT INTO ITEMS (Description, Completed) VALUES ('Cheese', 1)
- C. INSERT INTO ITEMS (10, Description, Completed) VALUES (NEWID(), 'Cheese', 6)
- D. INSERT INTO ITEMS (Description, Completed) VALUES ('Cheese', 0)

Answer: D

Explanation:

The string values TRUE and FALSE can be converted to bit values: TRUE is converted to 1 and FALSE is converted to 0.

Incorrect:

Not A, not C: ID is autogenerated and should not be specified.

NEW QUESTION 48

- (Topic 1)

You need to group all the style settings into a separate file that can be applied to all the pages in a Web application.

What should you do?

- A. Use a Cascading Style Sheet (CSS).
- B. Use inline styles.
- C. Use an Extensible Markup Language (XML) schema.
- D. Use a WebKit.

Answer: A

Explanation:

Cascading Style Sheets (CSS) is a style sheet language used for describing the look and formatting of a document written in a markup language.

CSS is designed primarily to enable the separation of document content from document presentation, including elements such as the layout, colors, and fonts.

NEW QUESTION 52

- (Topic 1)

Which type of Windows application presents a parent window that contains child windows?

- A. Application programming interface (API)
- B. Single-document interface (SDI)
- C. Multiple-document interface (MDI)
- D. Command-line interface (CLI)

Answer: C

Explanation:

A multiple document interface (MDI) is a graphical user interface in which multiple windows reside under a single parent window. Such systems often allow child windows to embed other windows inside them as well, creating complex nested hierarchies. This contrasts with single document interfaces (SDI) where all windows are independent of each other.

NEW QUESTION 57

- (Topic 1)

You have a server that limits the number of data connections.

What should you use to optimize connectivity when the number of users exceeds the number of available connections?

- A. Connection timeouts
- B. Named pipes
- C. Normalization
- D. Connection pooling

Answer: D

Explanation:

In software engineering, a connection pool is a cache of database connections maintained so that the connections can be reused when future requests to the database are required.

NEW QUESTION 62

- (Topic 1)

This question requires that you evaluate the underlined text to determine if it is correct.

Internet Information Services (IIS) must be installed on the client computers in order to run a deployed ASP.NET application.

Select the correct answer if the underlined text does not make the statement correct. Select "No change is needed" if the underlined text makes the statement correct.

- A. No change is needed
- B. computer that hosts the application
- C. computer that you plan to deploy from
- D. Application Layer Gateway Service

Answer: B

Explanation:

Internet Information Services (IIS) must be installed on computer that hosts the application in order to run a deployed ASP.NET application.

NEW QUESTION 63

- (Topic 1)

Which type of function can a derived class override?

- A. a non-virtual public member function
- B. a private virtual function
- C. a protected virtual member function
- D. a static function

Answer: C

Explanation:

You can override virtual functions defined in a base class from the Visual Studio.

The override modifier is required to extend or modify the abstract or virtual implementation of an inherited method, property, indexer, or event.

NEW QUESTION 66

- (Topic 1)

You are creating an application that accepts input and displays a response to the user. You cannot create a graphical interface for this application.

Which type of application should you create?

- A. Windows Forms
- B. Windows Service
- C. Web-based
- D. Console-based

Answer: C

NEW QUESTION 67

- (Topic 1)

A table named Student has columns named ID, Name, and Age. An index has been created on the ID column. What advantage does this index provide?

- A. It reorders the records alphabetically.
- B. It speeds up query execution.
- C. It minimizes storage requirements.
- D. It reorders the records numerically.

Answer: B

Explanation:

Faster to access an index table.

NEW QUESTION 72

- (Topic 1)

You are creating an application for a priority help desk center. The most recent call must be handled first.

Which data structure should you use?

- A. queue
- B. hashtable
- C. stack
- D. binary tree

Answer: C

Explanation:

In computer science, a stack is a particular kind of abstract data type or collection in which the principal (or only) operations on the collection are the addition of an entity to the collection, known as push and removal of an entity, known as pop. The relation between the push and pop operations is such that the stack is a Last-In-First-Out (LIFO)

data structure. In a LIFO data structure, the last element added to the structure must be the first one to be removed.

NEW QUESTION 77

- (Topic 1)

How many parameters can a default constructor have?

- A. 1
- B. 2
- C. 3 or more

Answer: A

Explanation:

If a class contains no instance constructor declarations, a default instance constructor is automatically provided. That default constructor simply invokes the parameterless constructor of the direct base class.

NEW QUESTION 78

- (Topic 1)

In the application life cycle, the revision of an application after it has been deployed is referred to as:

- A. Unit testing
- B. Integration
- C. Maintenance
- D. Monitoring

Answer: C

NEW QUESTION 81

- (Topic 1)

This question requires that you evaluate the underlined text to determine if it is correct.

When a base class declares a method as virtual, the method is hidden from implementation by a derived class.

Select the correct answer if the underlined text does not make the statement correct. Select "No change is needed" if the underlined text makes the statement correct.

- A. No change is needed
- B. can be overridden with its own implementation by a derived class
- C. must be overridden in any non-abstract class that directly inherits from that class
- D. cannot be overridden with its own implementation by a derived class

Answer: B

Explanation:

The implementation of a non-virtual method is invariant: The implementation is the same whether the method is invoked on an instance of the class in which it is declared or an instance of a derived class. In contrast, the implementation of a virtual method can be superseded by derived classes. The process of superseding the implementation of an inherited virtual method is known as overriding that method.

NEW QUESTION 84

- (Topic 1)

You are building a web application that enables international exchange students to schedule phone calls with their prospective schools.

The application allows students to indicate a preferred date and time for phone calls. Students may indicate no preferred time by leaving the date and time field empty. The application must support multiple time zones.

Which data type should you use to record the student's preferred date and time?

- A. uLong?
- B. DateTime
- C. SByte
- D. DateTimeOffset?

Answer: D

Explanation:

datetimeoffset: Defines a date that is combined with a time of a day that has time zone awareness and is based on a 24-hour clock.

Incorrect:

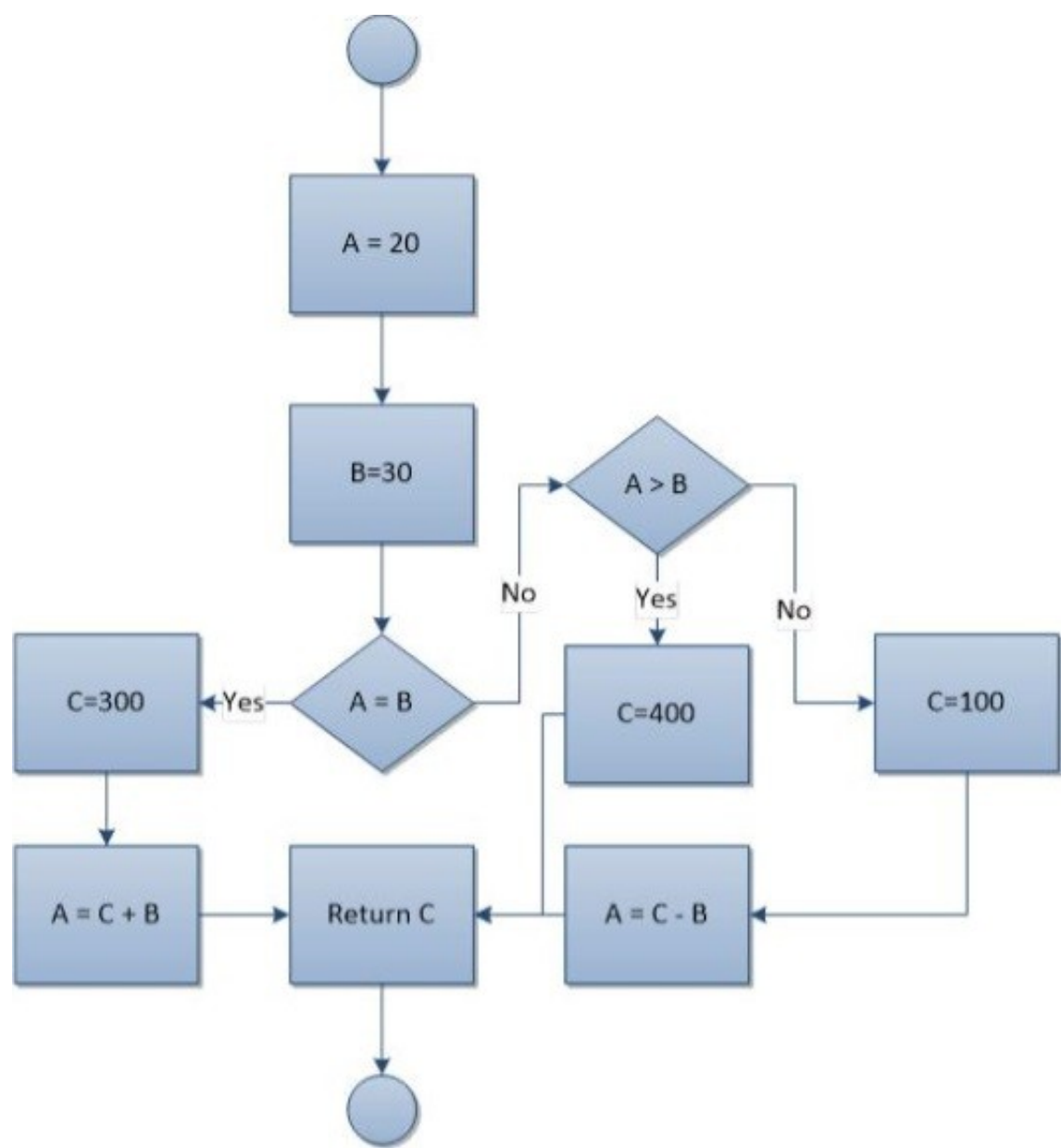
DateTime: Defines a date that is combined with a time of day with fractional seconds that is based on a 24-hour clock.

sByte: The sbyte keyword indicates an integral type that stores values in the range of -128 to 127.

NEW QUESTION 85

HOTSPOT - (Topic 1)

You have the following flowchart:



Use the drop-down menus to select the answer choice that completes each statement Each correct selection is worth one point.

Answer Area

The value that is returned is [answer choice].

The value of A is [answer choice].

Answer Area

The value that is returned is [answer choice].

20
100
300
400

The value of A is [answer choice].

20
30
70
330

- A. Mastered
- B. Not Mastered

Answer: A

Explanation:

Answer Area

The value that is returned is [answer choice].

20
100
300
400

The value of A is [answer choice].

20
30
70
330

NEW QUESTION 90

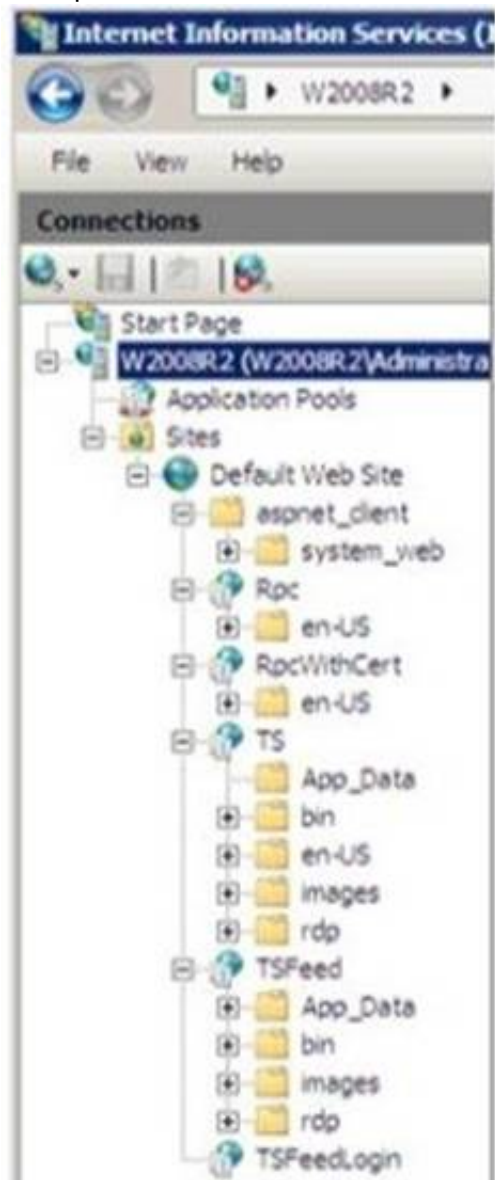
- (Topic 1)
In which order do the typical phases of the Software Development Life Cycle occur?

- A. Development, design, requirements gathering, and testing
- B. Design, requirements gathering, development, and testing
- C. Design, development, requirements gathering, and testing
- D. Requirements gathering, design, development, and testing

Answer: D

NEW QUESTION 94

HOTSPOT - (Topic 1)
You open the Internet Information Services 7.5 Manager console as shown in the following exhibit:



You need to examine the current configuration of the server W2008R2.
Use the drop-down menus to select the answer choice that answers each question. Each correct selection is worth one point.

Answer Area

How many sites are configured on server W2008R2?

How many applications are configured on server W2008R2?

Answer Area

How many sites are configured on server W2008R2?

0
1
5
13

How many applications are configured on server W2008R2?

0
1
5
13

- A. Mastered
B. Not Mastered

Answer: A

Explanation:

Answer Area

How many sites are configured on server W2008R2?

0
1
5
13

How many applications are configured on server W2008R2?

0
1
5
13

NEW QUESTION 95

- (Topic 1)

Which term is used to describe a class that inherits functionality from an existing class?

- A. Base class
B. Inherited class
C. Derived class
D. Superclass

Answer: C

Explanation:

Classes (but not structs) support the concept of inheritance. A class that derives from another class (the base class) automatically contains all the public, protected, and internal members of the base class except its constructors and destructors.

NEW QUESTION 99

- (Topic 1)

You run the following code:

```
int a = 10;  
int b = 20;  
int c = 30;  
int result = 0;  
  
if (a <= b || c > a)  
    result = 10;  
else if (a <= b || c <= a)  
    result = 20;  
else  
    result = 30;
```

What is the value of result when the code has completed?

- A. 10
B. 20
C. 30

Answer: B

Explanation:

The conditional-OR operator (||) performs a logical-OR of its bool operands. If the first operand evaluates to true, the second operand isn't evaluated. If the first operand evaluates to false, the second operator determines whether the OR expression as a whole evaluates to true or false.

NEW QUESTION 100

- (Topic 1)

You have a Microsoft ASP.NET web application.

You need to store a value that can be shared across users on the server. Which type of state management should you use?

- A. Session
- B. ViewState
- C. Application
- D. Cookies

Answer: C

Explanation:

Application state is a data repository available to all classes in an ASP.NET application. Application state is stored in memory on the server and is faster than storing and retrieving information in a database. Unlike session state, which is specific to a single user session, application state applies to all users and sessions. Therefore, application state is a useful place to store small amounts of often-used data that does not change from one user to another.

Incorrect:

not A: Session State contains information that is pertaining to a specific session (by a particular client/browser/machine) with the server. It's a way to track what the user is doing on the site.. across multiple pages...amid the statelessness of the Web. e.g. the contents of a particular user's shopping cart is session data. Cookies can be used for session state. Not B: Viewstate is a state management technique in asp.net. ASP.NET Viewstate is preserving the data between the requests or postbacks and stored in hidden fields on the page.

NEW QUESTION 104

HOTSPOT - (Topic 1)

For each of the following statements, select Yes if the statement is true. Otherwise, select No. Each correct selection is worth one point.

Answer Area

Description of Behavior	Yes	No
The "is a" relationship between classes refers to composition.	<input type="radio"/>	<input type="radio"/>
The "has a" relationship between classes refers to inheritance.	<input type="radio"/>	<input type="radio"/>
Both composition and inheritance allow you to create sub-objects.	<input type="radio"/>	<input type="radio"/>

- A. Mastered
- B. Not Mastered

Answer: A

Explanation:

Answer Area

Description of Behavior	Yes	No
The "is a" relationship between classes refers to composition.	<input type="radio"/>	<input checked="" type="radio"/>
The "has a" relationship between classes refers to inheritance.	<input type="radio"/>	<input checked="" type="radio"/>
Both composition and inheritance allow you to create sub-objects.	<input checked="" type="radio"/>	<input type="radio"/>

NEW QUESTION 109

- (Topic 1)

What are two possible options for representing a Web application within Internet

Information Services (IIS)? (Each correct answer presents a complete solution. Choose two.)

- A. Web site
- B. Web directory

- C. Virtual directory
- D. Application server
- E. Application directory

Answer: AC

Explanation:

* Create a Web Application
An application is a grouping of content at the root level of a Web site or a grouping of content in a separate folder under the Web site's root directory. When you add an application in IIS 7, you designate a directory as the application root, or starting point, for the application and then specify properties specific to that particular application, such as the application pool that the application will run in.
* You can make an Existing Virtual Directory a Web Application.

NEW QUESTION 111

HOTSPOT - (Topic 2)
You are reviewing the following class that is used to manage the results of a 5K race:

```
Public Class Player
    Private _name As String
    Public Const Key As String = "player"

    Private _ranking As Integer
    Public Property Ranking() As Integer
        Get
            Return _ranking
        End Get
        Private Set(value As Integer)
            _ranking = value
        End Set
    End Property

    Public Function MatchName(searchTerm As String) As Boolean
        Return _name.ToLower() = searchTerm
    End Function

    Public Sub SetResult(rank As Integer, name As String)
        If (Not IsNothing(_name)) Then
            Return
        End If

        Ranking = rank
        _name = name
    End Sub
End Class
```

For each of the following statements, select Yes if the statement is true. Otherwise, select No. Each correct selection is worth one point.

Answer Area

Description of Behavior	Yes	No
You can only set the player’s ranking once.	<input type="radio"/>	<input type="radio"/>
If you call the MatchName method, the code will throw an exception.	<input type="radio"/>	<input type="radio"/>
You can change Key from “player” to “racer”.	<input type="radio"/>	<input type="radio"/>

- A. Mastered
- B. Not Mastered

Answer: A

Explanation:

Answer Area

Description of Behavior	Yes	No
You can only set the player’s ranking once.	<input checked="" type="radio"/>	<input type="radio"/>
If you call the MatchName method, the code will throw an exception.	<input checked="" type="radio"/>	<input type="radio"/>
You can change Key from “player” to “racer”.	<input type="radio"/>	<input checked="" type="radio"/>

NEW QUESTION 113

HOTSPOT - (Topic 2)

For each of the following statements, select Yes if the statement is true. Otherwise, select No. Each correct selection is worth one point.

Answer Area

Statement	Yes	No
XHTML attribute names must be in uppercase.	<input type="radio"/>	<input type="radio"/>
XHTML attribute values must be in quotation marks.	<input type="radio"/>	<input type="radio"/>
XHTML attribute minimization is forbidden.	<input type="radio"/>	<input type="radio"/>

- A. Mastered
- B. Not Mastered

Answer: A

Explanation:

Answer Area

Statement	Yes	No
XHTML attribute names must be in uppercase.	<input type="radio"/>	<input checked="" type="radio"/>
XHTML attribute values must be in quotation marks.	<input checked="" type="radio"/>	<input type="radio"/>
XHTML attribute minimization is forbidden.	<input checked="" type="radio"/>	<input type="radio"/>

NEW QUESTION 115

- (Topic 2)

This question requires that you evaluate the underlined text to determine if it is correct.

When creating a site to utilize message queuing, the "IP address" must be configured to MSMQ.

Select the correct answer if the underlined text does not make the statement correct. Select "No change is needed" if the underlined text makes the statement correct.

- A. No change is needed

- B. protocol
- C. host header
- D. port

Answer: B

Explanation:

MSMQ is a messaging protocol that allows applications running on separate servers/processes to communicate in a failsafe manner.

NEW QUESTION 118

- (Topic 2)

This question requires that you evaluate the underlined text to determine if it is correct.

The benefit of using a transaction when updating multiple tables is that the update cannot fail.

Select the correct answer if the underlined text does not make the statement correct. Select "No change is needed" if the underlined text makes the statement correct.

- A. No change is needed
- B. succeeds or fails as a unit
- C. finishes as quickly as possible
- D. can be completed concurrently with other transactions

Answer: B

Explanation:

The benefit of using a transaction when updating multiple tables is that the update succeeds or fails as a unit.

NEW QUESTION 120

- (Topic 2)

A data warehouse database is designed to:

- A. Require validation of incoming data during real-time business transactions.
- B. Enable business decisions by collecting, consolidating, and organizing data.
- C. Support real-time business operations.
- D. Support a large number of concurrent users.

Answer: B

NEW QUESTION 121

- (Topic 2)

How should you configure an application to consume a Web service?

- A. Add the Web service to the development computer.
- B. Add a reference to the application in the Web service.
- C. Add a reference to the Web service in the application.
- D. Add the Web service code to the application.

Answer: C

Explanation:

Start by adding a Service Reference to the project. Right-click the ConsoleApplication1 project and choose ??Add Service Reference??:

NEW QUESTION 125

- (Topic 2)

Which of the following must exist to inherit attributes from a particular class?

- A. Public properties
- B. A has-a relationship
- C. Static members
- D. An is-a relationship

Answer: A

Explanation:

There must be some public properties that can be inherited.

NEW QUESTION 130

- (Topic 2)

You are writing a Web application that processes room reservation requests. You need to verify that the room that a guest has selected is not already reserved by another guest.

Which type of programming should you use to determine whether the room is still available when the request is made?

- A. functional
- B. in-browser
- C. dynamic
- D. server-side

Answer: :D

NEW QUESTION 134

- (Topic 2)

In your student directory database, the Students table contains the following fields:

firstName lastName emailAddress telephoneNumber

You need to retrieve the data from the firstName, lastName, and emailAddress fields for all students listed in the directory. The results must be in alphabetical order according to lastName and then firstName.

Which statement should you use?

- ☐ A. `SELECT firstName, lastName, emailAddress
FROM Students BY lastName, firstName`
- ☐ B. `SELECT firstName, lastName
FROM Students
ORDER BY lastName, firstName, emailAddress`
- ☐ C. `SELECT firstName, lastName, emailAddress
FROM Students
SORT BY lastName, firstName`
- ☐ D. `SELECT firstName, lastName, emailAddress
FROM Students
ORDER BY lastName, firstName`

- A. Option A
B. Option B
C. Option C
D. Option D

Answer: D

Explanation:

to sort use: ORDER BY LastName, FirstName

NEW QUESTION 139

- (Topic 2)

This question requires that you evaluate the underlined text to determine if it is correct. A data dictionary that describes the structure of a database is called metadata.

Select the correct answer if the underlined text does not make the statement correct. Select "No change is needed" if the underlined text makes the statement correct.

- A. No change is needed
B. normalization
C. a database management system (DBMS)
D. metacontent

Answer: A

NEW QUESTION 144

- (Topic 2)

You have a table named ITEMS with the following fields:

? ID (integer, primary key. auto generated)

? Description (text)

? Completed (Boolean)

You need to insert the following data in the table: "Cheese", False

Which statement should you use?

- A. `INSERT INTO ITEMS (Description, Completed) VALUES ('Cheese', 1)`
B. `INSERT INTO ITEMS (ID, Description, Completed) VALUES (NEWID(), 'Cheese', 0)`
C. `INSERT INTO ITEMS (ID, Description, Completed) VALUES (1, 'Cheese', 0)`
D. `INSERT INTO ITEMS (Description, Completed) VALUES ('Cheese', 0)`

Answer: D

Explanation:

The string values TRUE and FALSE can be converted to bit values: TRUE is converted to 1 and FALSE is converted to 0.

Incorrect:

Not B, not C: ID is autogenerated and should not be specified.

NEW QUESTION 148

- (Topic 2)

You have a server that limits the number of data connections.
What should you use to optimize connectivity when the number of users exceeds the number of available connections?

- A. Named pipes
- B. Normalization
- C. Connection timeouts
- D. Connection pooling

Answer: D

Explanation:
In software engineering, a connection pool is a cache of database connections maintained so that

NEW QUESTION 150

- (Topic 2)
A class named Manager is derived from a parent class named Employee. The Manager class includes characteristics that are unique to managers.
Which term is used to describe this object-oriented concept?

- A. inheritance
- B. data modeling
- C. data hiding
- D. encapsulation

Answer: A

Explanation:
Classes (but not structs) support the concept of inheritance. A class that derives from another class (the base class) automatically contains all the public, protected, and internal members of the base class except its constructors and destructors.
Incorrect:
not D: Encapsulation is sometimes referred to as the first pillar or principle of object- oriented programming. According to the principle of encapsulation, a class or struct can specify how accessible each of its members is to code outside of the class or struct. Methods and variables that are not intended to be used from outside of the class or assembly can be hidden to limit the potential for coding errors or malicious exploits.

NEW QUESTION 154

- (Topic 2)
This question requires that you evaluate the underlined text to determine if it is correct.
The bubble sort algorithm steps through the list to be sorted, comparing adjacent items and swapping them if they are in the wrong order.
Select the correct answer if the underlined text does not make the statement correct. Select "No change is needed" if the underlined text makes the statement correct.

- A. No change is needed
- B. merge
- C. library
- D. insertion

Answer: A

NEW QUESTION 157

HOTSPOT - (Topic 2)
For each of the following statements, select Yes if the statement is true. Otherwise, select No. Each correct selection is worth one point.

Answer Area

Description of Behavior	Yes	No
A queue’s items are stored in the order they were added.	<input type="radio"/>	<input type="radio"/>
A queue is a first in, first out (FIFO) data structure.	<input type="radio"/>	<input type="radio"/>
A queue has a limited number of items.	<input type="radio"/>	<input type="radio"/>

- A. Mastered
- B. Not Mastered

Answer: A

Explanation:

Answer Area

Description of Behavior	Yes	No
A queue's items are stored in the order they were added.	<input checked="" type="radio"/>	<input type="radio"/>
A queue is a first in, first out (FIFO) data structure.	<input checked="" type="radio"/>	<input type="radio"/>
A queue has a limited number of items.	<input type="radio"/>	<input checked="" type="radio"/>

NEW QUESTION 158

- (Topic 2)

A table named Student has columns named ID, Name, and Age. An index has been created on the ID column. What advantage does this index provide?

- A. It reorders the records alphabetically.
- B. It reorders the records numerically.
- C. It speeds up query execution.
- D. It minimizes storage requirements.

Answer: C

Explanation:

Faster to access an index table.

NEW QUESTION 163

- (Topic 2)

This question requires that you evaluate the underlined text to determine if it is correct.

To minimize the amount of storage used on the hard drive by an application that generates many small files, you should make the partition as small as possible. Select the correct answer if the underlined text does not make the statement correct. Select "No change is needed" if the underlined text makes the statement correct.

- A. No change is needed
- B. file allocation table
- C. block size
- D. folder and file names

Answer: C

NEW QUESTION 166

- (Topic 2)

How many parameters can a default constructor have?

- A. 1
- B. 2
- C. 3 or more

Answer: :A

Explanation:

If a class contains no instance constructor declarations, a default instance constructor is automatically provided. That default constructor simply invokes the parameterless constructor of the direct base class.

NEW QUESTION 168

- (Topic 2)

The throw keyword is used to perform which two actions? (Choose two.)

- A. stop processing of the code
- B. move error handling to a separate thread
- C. raise exceptions
- D. re-throw exceptions as a different type

Answer: CD

Explanation:

* The Throw statement throws an exception that you can handle with structured exception-handling code (Try...Catch...Finally) or unstructured exception- handling code (On Error GoTo). You can use the Throw statement to trap errors within your code because Visual Basic moves up the call stack until it finds the appropriate exception- handling code.

* This example throws an ApplicationException exception. Throw New ApplicationException

NEW QUESTION 171

HOTSPOT - (Topic 2)

You are developing a web application.

You need to create the following graphic by using Cascading Style Sheets (CSS):



Use the drop-down menus to select the answer choice that completes each statement. Each correct selection is worth one point.

Answer Area

For the CSS Style **background-image**, you should use the value [answer choice]

For the CSS Style **border-radius**, you should use the value [answer choice]

Answer Area

For the CSS Style **background-image**, you should use the value [answer choice]

For the CSS Style **border-radius**, you should use the value [answer choice]

- A. Mastered
- B. Not Mastered

Answer: A

Explanation:

Answer Area

For the CSS Style **background-image**, you should use the value [answer choice]

For the CSS Style **border-radius**, you should use the value [answer choice]

NEW QUESTION 172

- (Topic 2)

You are building a web application that enables international exchange students to schedule phone calls with their prospective schools.

The application allows students to indicate a preferred date and time for phone calls. Students may indicate no preferred time by leaving the date and time field empty. The application must support multiple time zones.

Which data type should you use to record the student's preferred date and time?

- A. uLong?
- B. DateTimeOffset?
- C. SByte
- D. Date

Answer: B

Explanation:

datetimeoffset: Defines a date that is combined with a time of a day that has time zone awareness and is based on a 24-hour clock.

Incorrect:

Date: Defines a date.

sByte: The sbyte keyword indicates an integral type that stores values in the range of -128 to 127.

NEW QUESTION 176

- (Topic 2)

What does the Console.Error property do within a console-based application?

- A. sets the standard error output stream
- B. gets the standard error input stream

- C. sets the standard error input stream
- D. gets the standard error output stream

Answer: D

Explanation:

The Console.Error property gets the standard error output stream.

NEW QUESTION 181

- (Topic 2)

Which type of function can a derived class override?

- A. A Protected Overridable member function
- B. A Shared function
- C. A Private Overridable function
- D. A non-overridable public member function

Answer: A

Explanation:

The Overridable modifier allows a property or method in a class to be overridden in a derived class. You cannot specify Overridable on a Private method.

NEW QUESTION 182

- (Topic 2)

How does a console-based application differ from a Windows Forms application?

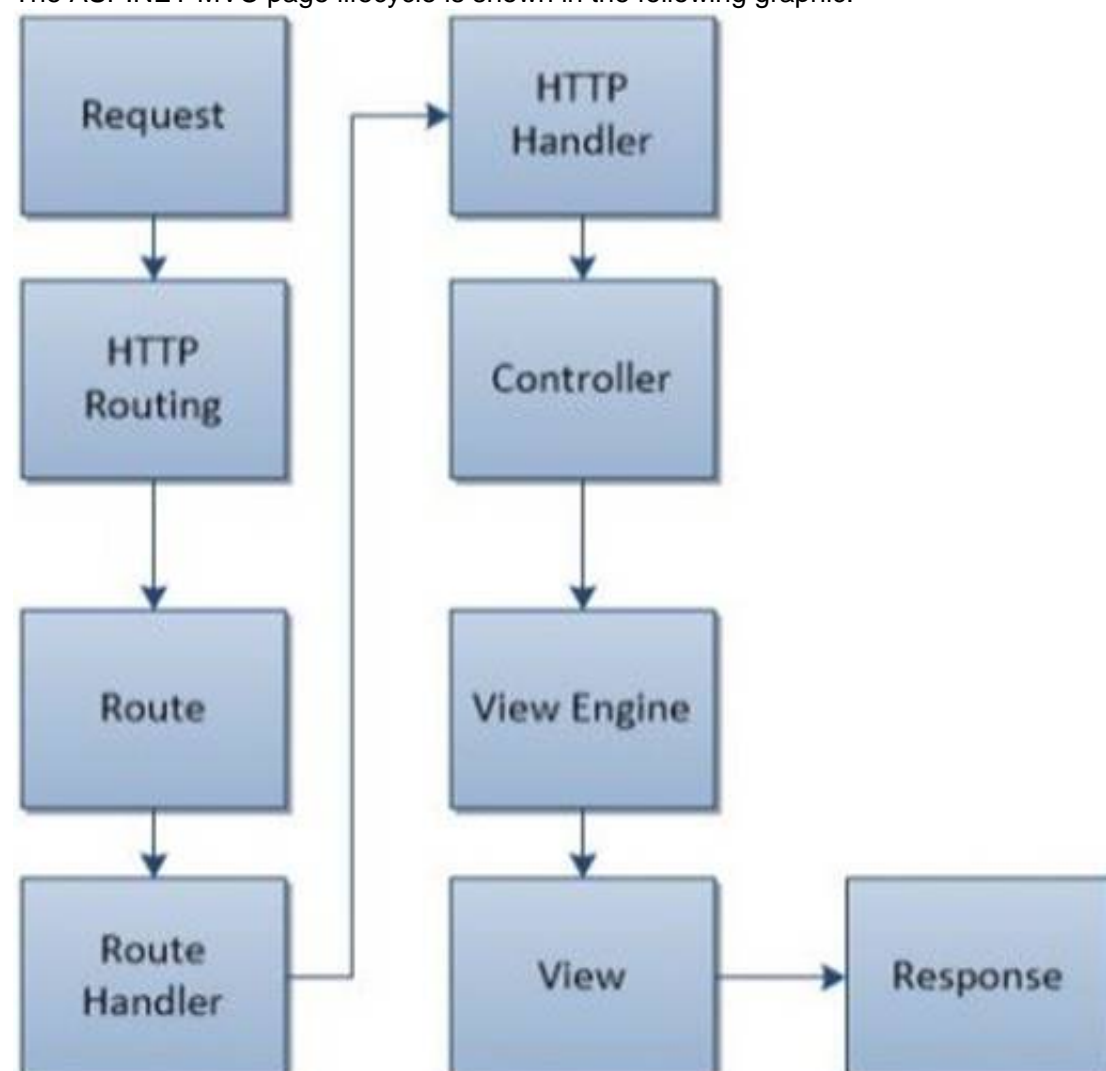
- A. Windows Forms applications can access network resources.
- B. Console-based applications do not display a graphical interface.
- C. Console-based applications require the XNA Framework to run.
- D. Windows Forms applications do not provide a method for user input.

Answer: B

NEW QUESTION 185

HOTSPOT - (Topic 2)

The ASP.NET MVC page lifecycle is shown in the following graphic:



Use the drop-down menus to select the answer choice that completes each statement Each correct selection is worth one point.

Answer Area

The [answer choice] event determines which action method is needed and then calls that method.

The URL pattern is matched during the [answer choice] event.

Answer Area

The [answer choice] event determines which action method is needed and then calls that method.

View
Route
Controller
HTTP Handler

The URL pattern is matched during the [answer choice] event.

View
Route
Controller
HTTP Handler

- A. Mastered
- B. Not Mastered

Answer: A

Explanation:

Answer Area

The [answer choice] event determines which action method is needed and then calls that method.

View
Route
Controller
HTTP Handler

The URL pattern is matched during the [answer choice] event.

View
Route
Controller
HTTP Handler

NEW QUESTION 188

HOTSPOT - (Topic 2)

For each of the following statements, select Yes if the statement is true. Otherwise, select No. Each correct selection is worth one point.

Answer Area

Test Behavior	Yes	No
The primary goal of unit testing is to take the smallest piece of testable software in the application, isolate it from the remainder of the code, and determine whether it behaves exactly as expected.	<input type="radio"/>	<input type="radio"/>
In unit testing, each unit is tested separately before integrating the units into modules to test the interfaces between modules.	<input type="radio"/>	<input type="radio"/>
The driver that you use in unit testing simulates a calling unit and the stub simulates a called unit.	<input type="radio"/>	<input type="radio"/>

- A. Mastered
- B. Not Mastered

Answer: A

Explanation:

Answer Area

Test Behavior	Yes	No
The primary goal of unit testing is to take the smallest piece of testable software in the application, isolate it from the remainder of the code, and determine whether it behaves exactly as expected.	<input checked="" type="radio"/>	<input type="radio"/>
In unit testing, each unit is tested separately before integrating the units into modules to test the interfaces between modules.	<input checked="" type="radio"/>	<input type="radio"/>
The driver that you use in unit testing simulates a calling unit and the stub simulates a called unit.	<input checked="" type="radio"/>	<input type="radio"/>

NEW QUESTION 192

- (Topic 2)

Which three phrases are advantages of connection pooling? (Choose three.)

- A. reduces load on the server
- B. improved performance
- C. reduces time to create a connection
- D. requires no configuration
- E. improved scalability

Answer: BCE

Explanation:

B: In connection pooling, after a connection is created, it is placed in the pool and it is used over again so that a new connection does not have to be established.
E: Connection pooling often improves application performance, concurrency and scalability.
C: Connection pooling also cuts down on the amount of time a user must wait to establish a connection to the database.

NEW QUESTION 193

- (Topic 2)

What are two possible options for representing a Web application within Internet Information Services (IIS)? (Each correct answer presents a complete solution. Choose two.)

- A. web site
- B. virtual directory
- C. application directory
- D. application server
- E. Web directory

Answer: AB

Explanation:

* Create a Web Application

An application is a grouping of content at the root level of a Web site or a grouping of content in a separate folder under the Web site's root directory. When you add an application in IIS 7, you designate a directory as the application root, or starting point, for the application and then specify properties specific to that particular application, such as the application pool that the application will run in.

* You can make an Existing Virtual Directory a Web Application.

NEW QUESTION 198

- (Topic 2)

Which language was designed for the primary purpose of querying data, modifying data, and managing databases in a Relational Database Management System?

- A. C + +
- B. Java
- C. SQL
- D. Visual Basic

Answer: C

Explanation:

SQL is a special-purpose programming language designed for managing data held in a relational database management system (RDBMS).

NEW QUESTION 200

- (Topic 2)

You are creating an application that presents users with a graphical interface in which they computers that do not have network connectivity. Which type of application should you choose?

- A. ClickOnce
- B. Windows Service
- C. Windows Forms
- D. Console-based

Answer: C

Explanation:

Use Windows Forms when a GUI is needed.

NEW QUESTION 204

- (Topic 2)

This question requires that you evaluate the underlined text to determine if it is correct. The default entry point for a console application is the Class method. Select the correct answer if the underlined text does not make the statement correct. Select "No change is needed" if the underlined text makes the statement correct.

- A. No change is needed
- B. Main
- C. Program
- D. Object

Answer: B

Explanation:

The default entry point for a console application is the Class Main.

NEW QUESTION 208

HOTSPOT - (Topic 2)

For each of the following statements, select Yes if the statement is true. Otherwise, select No. Each correct selection is worth one point.

Answer Area

Statement	Yes	No
Within an XHTML document, the XHTML DOCTYPE declaration is mandatory.	<input type="radio"/>	<input type="radio"/>
Within an XHTML document, the XML namespace attribute in the html tag is mandatory.	<input type="radio"/>	<input type="radio"/>
Within an XHTML document, the html, head, title, and body tags are mandatory.	<input type="radio"/>	<input type="radio"/>

- A. Mastered
- B. Not Mastered

Answer: A

Explanation:

Answer Area

Statement	Yes	No
Within an XHTML document, the XHTML DOCTYPE declaration is mandatory.	<input checked="" type="radio"/>	<input type="radio"/>
Within an XHTML document, the XML namespace attribute in the html tag is mandatory.	<input checked="" type="radio"/>	<input type="radio"/>
Within an XHTML document, the html, head, title, and body tags are mandatory.	<input checked="" type="radio"/>	<input type="radio"/>

NEW QUESTION 213

- (Topic 2)

This question requires that you evaluate the underlined text to determine if it is correct. The Response.Redirect method is used to transfer processing of the current page to a new

page, and then return processing back to the calling page once processing of the new page has completed.

Select the correct answer if the underlined text does not make the statement correct. Select "No change is needed" if the underlined text makes the statement correct.

- A. No change is needed
- B. Server.Transfer method
- C. Server.Execute method
- D. meta http-equiv="refresh" tag

Answer: C

Explanation:

The Execute method calls an .asp file, and processes it as if it were part of the calling ASP script. The Execute method is similar to a procedure call in many programming languages.

Incorrect:

* Response.Redirect Method

The Redirect method causes the browser to redirect the client to a different URL.

* The Server.Transfer method sends all of the information that has been assembled for processing by one .asp file to a second .asp file.

NEW QUESTION 214

- (Topic 2)

Your application must pull data from a database that resides on a separate server. Which action must you perform before your application can retrieve the data?

- A. Establish a connection to the database by using the appropriate data provider.
- B. Create a routine that bypasses firewalls by using Windows Management Instrumentation (WMI).
- C. Install the database on each client computer.
- D. Configure the network routers to allow database connections.

Answer: A

NEW QUESTION 219

- (Topic 2)

An application presents the user with a graphical interface. The interface includes buttons that the user clicks to perform tasks. Each time the user clicks a button, a method is called that corresponds to that button.

Which term is used to describe this programming model?

- A. Event driven
- B. Structured
- C. Service oriented
- D. Functional

Answer: A

NEW QUESTION 222

- (Topic 2)

This question requires that you evaluate the underlined text to determine if it is correct.

The duplication of code so that modifications can happen in parallel is known as separating.

Select the correct answer if the underlined text does not make the statement correct. Select "No change is needed" if the underlined text makes the statement correct.

- A. No change is needed
- B. branching
- C. merging
- D. splitting

Answer: B

Explanation:

When you develop applications in a team-based environment, you might need to access multiple versions of your application at the same time. If you copy one or more areas of your code into a separate branch, you can update one copy while you preserve the original version, or you can update both branches to meet different needs. Depending on your development goals, you can later merge the changes from multiple branches to create a single version that reflects all changes

NEW QUESTION 225

- (Topic 2)

You are creating a routine that will perform calculations by using a repetition structure. You need to ensure that the entire loop executes at least once.

Which looping structure should you use?

- A. For-Each
- B. For
- C. While
- D. Do-While

Answer: D

Explanation:

In a Do..While loop the test is at the end of the structure, so it will be executed at least once.

NEW QUESTION 229

- (Topic 2)

Your database administrators will not allow you to write SQL code in your application. How should you retrieve data in your application?

- A. Reference an index in the database.
- B. Call a stored procedure.
- C. Query a database view.
- D. Script a SELECT statement to a file.

Answer: B

Explanation:

The SQL will only be inside the stored procedure.

NEW QUESTION 230

- (Topic 2)

This question requires that you evaluate the underlined text to determine if it is correct. To improve performance, a SQL SELECT statement should use indexes. Select the correct answer if the underlined text does not make the statement correct. Select "No change is needed" if the underlined text makes the statement correct.

- A. No change is needed
- B. joins
- C. grouping
- D. ordering

Answer: A

NEW QUESTION 232

- (Topic 2)

When a web service is referenced from a client application in Microsoft Visual Studio, which two items are created? (Choose two.)

- A. a stub
- B. a proxy
- C. a.disco file
- D. a.wsdlfile

Answer: CD

Explanation:

A .wsdl file that references the Web service is created, together with supporting files, such as discovery (.disco and .discomap) files, that include information about where the Web service is located.

NEW QUESTION 233

- (Topic 2)

Class C and Class D inherit from Class B. Class B inherits from Class A. The classes have the methods shown in the following table.

Class	Method
A	m1
B	m2
C	m3
D	m4

All methods have a protected scope.

Which methods does Class C have access to?

- A. only m1, m3
- B. only m2, m3
- C. m1, m3, m4
- D. m1, m2, m3
- E. m2, m3, m4
- F. only m3, m4

Answer: D

NEW QUESTION 236

- (Topic 2)

Which term is used to describe a class that inherits functionality from an existing class?

- A. Superclass
- B. Base class
- C. Inherited class
- D. Derived class

Answer: D

Explanation:

Classes (but not structs) support the concept of inheritance. A class that derives from another class (the base class) automatically contains all the public, protected, and internal members of the base class except its constructors and destructors.

NEW QUESTION 238

- (Topic 2)

You are creating an application that presents users with a graphical interface. Users will run this application from remote computers. Some of the remote computers do not have the . NET Framework installed. Users do not have permissions to install software. Which type of application should you choose?

- A. Console-based
- B. AS
- C. NET
- D. Windows Service
- E. Windows Forms

Answer: B

NEW QUESTION 240

HOTSPOT - (Topic 2)

You are reviewing the following code that saves uploaded images.

```
Public Structure ImageInfo
    Public Data As Byte()
    Public Length As Integer
    Public Id As Guid
End Structure

Public Sub Post()
    Dim uploaded = PostedImage()
    Dim newImage = New ImageInfo()
    newImage.Data = uploaded
    newImage.Length = uploaded.Length
    newImage.Id = Guid.NewGuid()
End Sub
```

For each of the following statements, select Yes if the statement is true. Otherwise, select No. Each correct selection is worth one point.

Answer Area

Description of Behavior	Yes	No
The bytes that comprise the image are stored on the stack.	<input type="radio"/>	<input type="radio"/>
The length of the image data is stored on the heap.	<input type="radio"/>	<input type="radio"/>
The Id of the image is stored on the stack.	<input type="radio"/>	<input type="radio"/>

- A. Mastered
- B. Not Mastered

Answer: A

Explanation:

Answer Area

Description of Behavior	Yes	No
The bytes that comprise the image are stored on the stack.	<input type="radio"/>	<input checked="" type="radio"/>
The length of the image data is stored on the heap.	<input type="radio"/>	<input checked="" type="radio"/>
The Id of the image is stored on the stack.	<input checked="" type="radio"/>	<input type="radio"/>

NEW QUESTION 241

- (Topic 2)
You are reviewing a design for a database. A portion of this design is shown in the exhibit. Note that you may choose to view either the Crow's Foot Notation or Chen Notation version of the design. (To view the Crow's Foot Notation, click the Exhibit A button. To view the Chen Notation, click the Exhibit B button.)

Exhibit A



Exhibit B



Which term is used to describe the relationship between Customer and Order?

- A. many-to-many
- B. multi-dimensional
- C. one-to-many
- D. one-to-one
- E. one-dimensional

Answer: C

Explanation:

A customer can have many orders.

NEW QUESTION 242

- (Topic 2)
The following functions are defined:

```
Public Shared Function Printer(j As Integer) As Integer
    Dim i As Integer = j
    While i > 0
        Console.Write(i)
        i = Printer(i - 1)
    End While
    Return j
End Function
```

What does the console display after the following line? Printer(2)

- A. 210
- B. 211
- C. 2101
- D. 2121

Answer: B

NEW QUESTION 243

- (Topic 2)
Which service can host an ASP.NET application?

- A. Remote Desktop Services
- B. Internet Information Services
- C. web Services
- D. Cluster Services

Answer: :B

Explanation:

Using Internet Information Services (IIS) Manager, you can create a local Web site for hosting an ASP.NET Web application.

NEW QUESTION 245

.....

Thank You for Trying Our Product

We offer two products:

1st - We have Practice Tests Software with Actual Exam Questions

2nd - Questions and Answers in PDF Format

98-361 Practice Exam Features:

- * 98-361 Questions and Answers Updated Frequently
- * 98-361 Practice Questions Verified by Expert Senior Certified Staff
- * 98-361 Most Realistic Questions that Guarantee you a Pass on Your First Try
- * 98-361 Practice Test Questions in Multiple Choice Formats and Updates for 1 Year

100% Actual & Verified — Instant Download, Please Click
[Order The 98-361 Practice Test Here](#)