

# Oracle

## Exam Questions 1Z0-518

Oracle EBS R12.1 Receivables Essentials



#### NEW QUESTION 1

Identify the two benefits of using Multi-Org Access Control. (Choose two.)

- A. View asset Information across multiple asset books.
- B. Restrict access to users based on their Organization assignments.
- C. Submit and view data across different Ledgers using a single responsibility.
- D. Enter Payables invoices for different Operating Units using a single responsibility.
- E. View Consolidated requisitions across Operating Units using a single responsibility.

**Answer:** DE

#### NEW QUESTION 2

Several fields are required during manual Invoice entry. Which are the fields required at the header level?

- A. date, customer, source, type, GL date, legal entity
- B. date, legal entity, bill-to, source, type, class, remit-to
- C. terms, date, bill-to, source, legal entity, type, remit-to
- D. date, customer, source, type, General Ledger (GL) date, class
- E. date, source, class, type, GL date, legal entity, bill-to, terms, remit-to

**Answer:** E

#### NEW QUESTION 3

Select three statements that apply to IReceivables. (Choose three.)

- A. It Is a Web-based self-service application.
- B. It can be used to verify the status of Invoices and receipts.
- C. It is geared towards call centers, as well as credit and collections departments.
- D. It can be used to initiate the Oracle Approvals Management (AME) credit memo request workflow.

**Answer:** ABD

#### NEW QUESTION 4

Which three statements are true about Balance Forward Billing? (Choose three.)

- A. Billing date is an optional grouping rule.
- B. Billing date value is mandatory when cycle is external.
- C. Accept Consolidated Billing Invoices program is available.
- D. Print New Consolidated Billing Invoices program is available.
- E. It considers both manual transactions and imported transactions.
- F. Activity can be consolidated across account sites, or by each billing site.

**Answer:** BEF

#### NEW QUESTION 5

Which two statements are true about invoicing rules and accounting rules? (Choose two.)

- A. If a transaction has an invoicing rule, an accounting rule is optional.
- B. If a transaction has an invoicing rule, an accounting rule is not allowed.
- C. If a transaction has an invoicing rule, an accounting rule is also required.
- D. Invoicing rules and accounting rules have no effect until Invoices are paid.
- E. Invoicing rules and accounting rules have no effect unless you choose the accrual method of accounting.
- F. Invoicing rules determine when invoices are due
- G. Accounting rules affect how invoices are accounted for

**Answer:** CE

#### NEW QUESTION 6

Your functional end users are perplexed by the contents of the AutoInvoice Execution report. They needed expert guidance and came to you. You look at the report and see that the Interface Lines section of the report shows the following:

Selected: 9

Successfully Processed: 8

Failed Validation: 0

What is the likely reason for this?

- A. An adjustment update of an old Invoice is Included in this batch.
- B. The General Ledger (GL) code combination 10 failed the cross validation rules.
- C. A debit memo for an Invoice and the Invoice itself were submitted in the same batch and the debit memo is selected first.
- D. A credit memo for an Invoice and the Invoice itself are submitted in the same batch and the credit memo is selected first.
- E. The GL code combination segment value for the cost center was valid in the prior calendar month but is end-dated a day earlier.

**Answer:** D

#### NEW QUESTION 7

Your client has set up Oracle Lease Management (OLM) and Oracle Credit Management (OCM) without scoring models. Which three tasks can be successfully

completed by Oracle Workflow in OCM without manual intervention? (Choose three.)

- A. creating a case folder
- B. calculating a credit score
- C. creating a credit application
- D. creating a final credit recommendation
- E. sending notifications to the credit scheduler

**Answer:** ACE

#### NEW QUESTION 8

Which four transactions are improved by Autolvoice? (Choose four)

- A. invoices
- B. deposits
- C. guarantees
- D. debit memos
- E. credit memos
- F. on-account credits

**Answer:** ADEF

#### NEW QUESTION 9

Select four processes that are facilitated by the credit management workflow. (Choose four.)

- A. gathering prospect credit data
- B. analyzing prospect credit data
- C. gathering organization account credit data
- D. implementing credit decisions for individuals
- E. implementing credit decisions for organizations
- F. analyzing customer account credit data for Individuals

**Answer:** ABCE

#### NEW QUESTION 10

To properly associate one transaction type with another In Receivables, you have to define transact/on types In a specific order. Identify the correct order.

- A. invoice, credit memo, debit memo
- B. Invoice, debit memo, credit memo
- C. credit memo, invoice, debit memo
- D. credit memo, debit memo, invoice
- E. debit memo, invoice, credit memo
- F. debit memo, credit memo, invoice

**Answer:** C

#### NEW QUESTION 10

There are several setup steps for receipts in Oracle Receivables; some are required whereas others are optional. Which two setup steps are optional? (Choose two.)

- A. Define receipt classes.
- B. Define receipt methods.
- C. Define receipt sources.
- D. Define AutoCash rule sets.
- E. Define application rule sets.

**Answer:** DE

#### NEW QUESTION 11

BT Inc. Is Implementing Oracle Accounts Receivable to Interface with an external non-Oracle legacy billing system. The client wants Receivables to generate accounting entries, Instead of sending accounting data through the Interface.

Identify four setup items that are used by Receivables to generate the General Ledger (GL) code combinations. (Choose four,)

- A. AutoAccounting
- B. transaction type
- C. accounting rules
- D. transaction source
- E. customer bill-to site
- F. standard memo line

**Answer:** ABEF

#### NEW QUESTION 16

Which statement best describes stages In the credit review process?

- A. initiating a credit review, data collection, data analysis, making and implementing the recommendations
- B. defining a profile class, assigning it to customers, setting up the scoring model, and starting the workflow background process

- C. manually reviewing customers' past billing and payment history, initiating discussions with customers, and implementing recommendations
- D. manually initiating a review by sending out mails to customers requesting information, reviewing and making recommendations, and implementing recommendations after approval

**Answer:** A

#### NEW QUESTION 21

Your client has requirements to enter customers, suppliers, and remit-to addresses in country-specific formats for the United States, United Kingdom, and Ireland. Which are the three steps required to set up new flexible address formats in Oracle Applications? (Choose three.)

- A. creating address style lookup
- B. creating flexible address code
- C. setting up the "Default Address" profile option
- D. assigning address style to a specific country
- E. setting up flexible address format in a descriptive flexfield

**Answer:** ADE

#### NEW QUESTION 24

Identify the Receivables activity type where you are unable to select the tax rate code source option of invoice.

- A. adjustment
- B. earned discount
- C. unearned discount
- D. miscellaneous cash

**Answer:** D

#### NEW QUESTION 25

ABC Company is implementing Oracle Financials. The finance manager wants to set up a control point before the Receivables entries are transferred to General Ledger. Which two statements are correct about the control mechanisms that Receivables can provide? (Choose two.)

- A. Oracle approval limit can be used to approve or reject the invoices.
- B. Oracle approval limit can be used to approve or reject the credit memos.
- C. Oracle approval limit can be used to approve or reject the adjustment activities.
- D. Oracle Approvals Management (AME) Workflow can be used to approve or reject the invoices.
- E. Oracle Approvals Management (AME) Workflow can be used to approve or reject the credit memos.
- F. Oracle Approvals Management (AME) Workflow can be used to approve or reject the adjustment activities.

**Answer:** CE

#### NEW QUESTION 26

You want an invoice to be due in four stages. What should you do when creating the invoice to accomplish this?

- A. Assign an invoicing rule with four schedules.
- B. Assign an accounting rule with four schedules.
- C. Assign payment terms that have four payment schedules.
- D. Assign payment terms that have four discount periods defined.
- E. Create four lines and assign different payment terms to each line.

**Answer:** C

#### NEW QUESTION 31

In order for supplementary data sources to be registered in Oracle Bill Presentment Architecture (BPA), they must be interfaced with which Oracle Application?

- A. Oracle Projects
- B. Oracle Receivables
- C. Oracle Service Contract
- D. Oracle Order Management

**Answer:** B

#### NEW QUESTION 33

Which three statements are true about modifying flexfield values? (Choose three.)

- A. The values cannot be disabled.
- B. The value description can be changed.
- C. The effective dates for a value can be limited.
- D. The values can be deleted after they are defined.
- E. The values cannot be modified after they are defined.

**Answer:** BCE

#### NEW QUESTION 35

Identify the profile option that is required to enable Multi-Org Access Control for multiple Operating Units.

- A. HR: User Type
- B. MO: Operating Unit
- C. MO: Security Profile
- D. HR: Business Group
- E. MO: Default Operating Unit

**Answer:** C

#### NEW QUESTION 36

Which two options would you use to restrict the functionality provided by a responsibility? (Choose two.)

- A. creating an appropriate role
- B. creating an appropriate group
- C. constructing a new menu hierarchy
- D. defining rules to exclude specific functions

**Answer:** CD

#### NEW QUESTION 37

Which three statements are true about Oracle Workflow and Oracle Alerts? (Choose three.)

- A. Alerts can perform only one action.
- B. Workflow can support complex conditional
- C. Alerts can be configured for any frequency of occurrence.
- D. Workflows can wait for a user response during an activity.
- E. Alerts can perform multiple actions in a sequence that you specify.
- F. Alerts run only when a database record is either updated or created

**Answer:** BDE

#### NEW QUESTION 40

Daily business Intelligence pages summarized content for a particular functional area, Identify three features that the pages contain, (Choose three)

- A. Region
- B. Report
- C. Parameter
- D. Responsibilities
- E. Key Performance Indicators (KPIs)

**Answer:** ACE

#### NEW QUESTION 45

Identify three steps to be performed after defining a Flexfield structure, but before entering values, (Choose three)

- A. Select the ??Freeze Flexfield Definition?? check box.
- B. Click the Compile button to build the Flexfield structure.
- C. Save your changes before freezing the Flexfield definition.
- D. Submit a concurrent request to build the Flexfield structure.
- E. Do not save your changes before freezing the Flexfield definition.

**Answer:** ABC

#### NEW QUESTION 46

Identify four features of Workflow Monitor. (Choose four)

- A. enables you to view your workflows
- B. enables you to modify a workflow definition file
- C. enables you to download a workflow definition file
- D. displays status information for the process instance
- E. enables administrators to perform control Operations
- F. enables you to search for a workflow process instance
- G. provides only summary-level information about individual activities of a workflow process

**Answer:** ADEF

#### NEW QUESTION 51

Event Types in Subledger Accounting is a grouping of\_\_\_\_\_.

- A. Events
- B. Accounts
- C. Event Models
- D. Event Entitles
- E. Event Classes

**Answer:** E

**NEW QUESTION 56**

Identify the component in Subledger Accounting that enables you to meet the requirements for multiple accounting representations for an event.

- A. Event Definition
- B. Event Classification
- C. Subledger Accounting method
- D. Application Accounting Definition

**Answer:** D

**NEW QUESTION 60**

Oracle Daily Business Intelligence functions are secured using standard Oracle Applications function security. Choose three dashboards that are secured by the Inventory Organization. (Choose three.)

- A. Inventory Management
- B. Warehouse Management
- C. Procurement Management
- D. Commodity Supplier Management
- E. Customer Fulfillment Management

**Answer:** ABE

**NEW QUESTION 63**

Which four products in Oracle E-Business Suite Release 12 require a Multi-Org setup? (Choose four)

- A. Payables
- B. Purchasing
- C. Receivables
- D. General Ledger
- E. Order Management

**Answer:** ABCE

**NEW QUESTION 68**

Identify two Descriptive Flexfield components whose values are used to determine Contexts. (Choose two.)

- A. the Context field
- B. Global Segments
- C. the Reference field
- D. Context-sensitive Segments

**Answer:** AC

**NEW QUESTION 69**

Which two statements are true regarding ownership of shared entities? (Choose two)

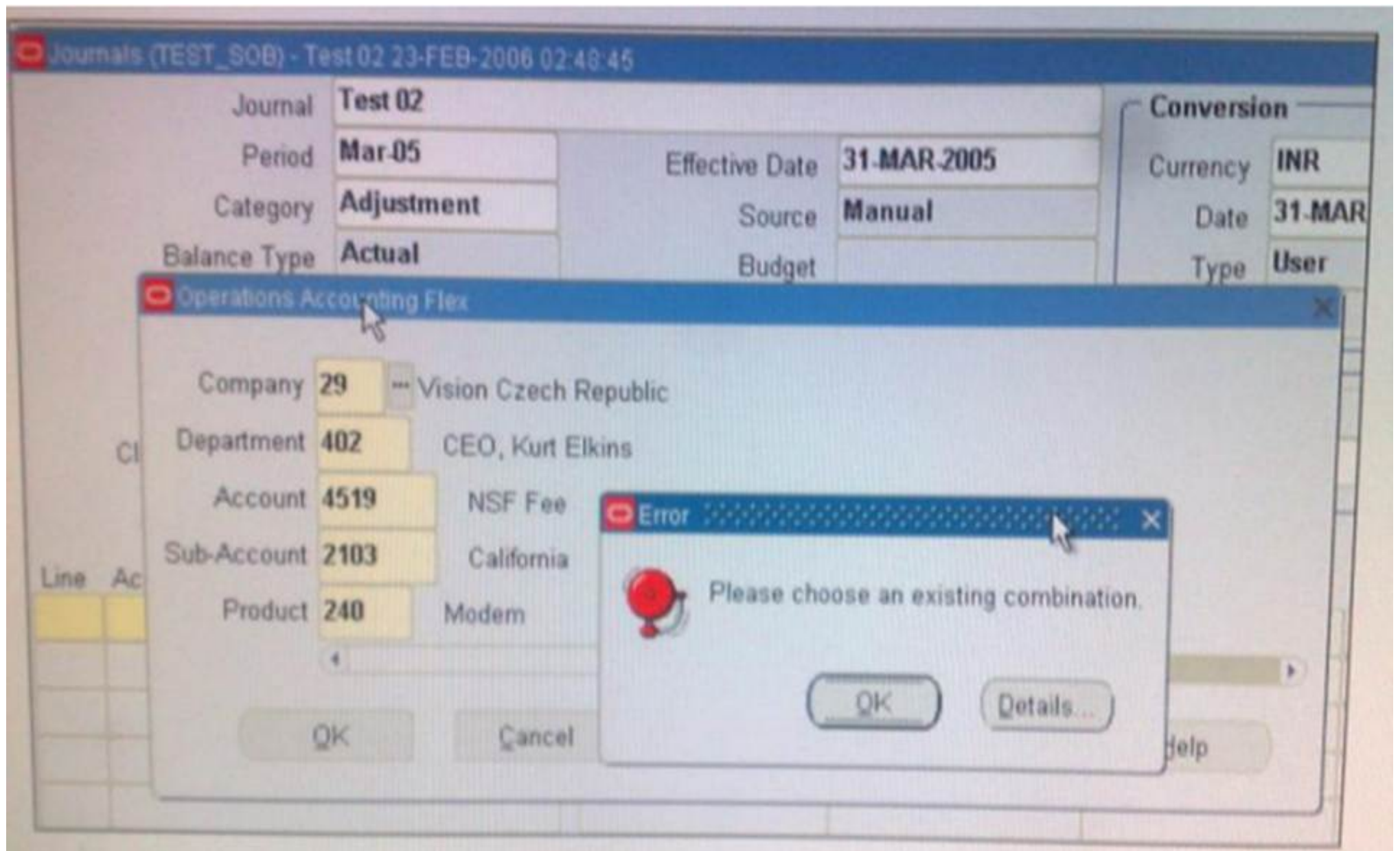
- A. Items is owned by Oracle Purchasing, whereas Locations is owned by Oracle Receivables,
- B. Suppliers is owned by Oracle Purchasing, whereas Units of Measure is owned by Oracle Inventory.
- C. Ledger is owned by Oracle General Ledger, whereas Locations is owned by Oracle Human Resources.
- D. Customers is owned by Oracle Human Resources, whereas Locations is owned by Oracle Receivables.
- E. Sales Force is owned by Oracle Order Management, whereas Employees is owned by Oracle Human Resources.

**Answer:** BC

**NEW QUESTION 71**

View the Exhibit.





While entering a journal in the Journals form, you enter a code combination of 29.402.4519.2103.240 in the five-segment Accounting Flexfield. However, you are unable to proceed after entering this account combination.

What could be the problem in the structure definition of the Accounting Flexfield?

- A. The "Freeze Rollup Groups" check box is selected.
- B. The "Allow Dynamic Inserts" check box is deselected.
- C. The "Freeze Flexfield Definition" check box is selected.
- D. The "Cross-Validate Segments" check box is selected.

**Answer: B**

#### NEW QUESTION 76

Identify the two benefits of using Multi-Org Access Control. (Choose two.)

- A. View asset Information across multiple asset books.
- B. Restrict access to users based on their Quantization assignments.
- C. Submit and view data across different Ledgers using a single responsibility.
- D. Enter Payables Invoices for different Operating Units using a single responsibility.
- E. View Consolidated requisitions across Operating Units using a single responsibility

**Answer: DE**

#### NEW QUESTION 80

.....

## Thank You for Trying Our Product

### We offer two products:

1st - We have Practice Tests Software with Actual Exam Questions

2nd - Questions and Answers in PDF Format

### 1Z0-518 Practice Exam Features:

- \* 1Z0-518 Questions and Answers Updated Frequently
- \* 1Z0-518 Practice Questions Verified by Expert Senior Certified Staff
- \* 1Z0-518 Most Realistic Questions that Guarantee you a Pass on Your First Try
- \* 1Z0-518 Practice Test Questions in Multiple Choice Formats and Updates for 1 Year

**100% Actual & Verified — Instant Download, Please Click**  
**[Order The 1Z0-518 Practice Test Here](#)**