

SC-200 Dumps

Microsoft Security Operations Analyst

<https://www.certleader.com/SC-200-dumps.html>



NEW QUESTION 1

HOTSPOT - (Topic 1)

You need to implement Azure Sentinel queries for Contoso and Fabrikam to meet the technical requirements.

What should you include in the solution? To answer, select the appropriate options in the answer area.

NOTE: Each correct selection is worth one point.

Minimum number of Log Analytics workspaces required in the Azure subscription of Fabrikam:

	▼
0	
1	
2	
3	

Query element required to correlate data between tenants:

	▼
extend	
project	
workspace	

- A. Mastered
- B. Not Mastered

Answer: A

Explanation:

Minimum number of Log Analytics workspaces required in the Azure subscription of Fabrikam:

	▼
0	
1	
2	
3	

Query element required to correlate data between tenants:

	▼
extend	
project	
workspace	

NEW QUESTION 2

HOTSPOT - (Topic 1)

You need to recommend remediation actions for the Azure Defender alerts for Fabrikam.

What should you recommend for each threat? To answer, select the appropriate options in the answer area.

NOTE: Each correct selection is worth one point.

Answer Area

Internal threat:

	▼
Add resource locks to the key vault.	
Modify the access policy settings for the key vault.	
Modify the role-based access control (RBAC) settings for the key vault.	

External threat:

	▼
Implement Azure Firewall.	
Modify the Key Vault firewall settings.	
Modify the network security groups (NSGs).	

- A. Mastered
- B. Not Mastered

Answer: A

Explanation:

Answer Area

Internal threat:

	▼
Add resource locks to the key vault.	
Modify the access policy settings for the key vault.	
Modify the role-based access control (RBAC) settings for the key vault.	

External threat:

	▼
Implement Azure Firewall.	
Modify the Key Vault firewall settings.	
Modify the network security groups (NSGs).	

NEW QUESTION 3

HOTSPOT - (Topic 1)

You need to create an advanced hunting query to investigate the executive team issue.

How should you complete the query? To answer, select the appropriate options in the answer area.

NOTE: Each correct selection is worth one point.

	▼
CloudAppEvents	
DeviceFileEvents	
DeviceProcessEvents	

```
| where TimeStamp > ago(2d)
```

```
| summarize activityCount =
```

	▼
avg()	
count()	
sum()	

```
by FolderPath, FileName,
```

```
ActionType, AccountDisplayName
```

```
| where activityCount > 5
```

- A. Mastered
- B. Not Mastered

Answer: A

Explanation:

	▼
CloudAppEvents	
DeviceFileEvents	
DeviceProcessEvents	

```
| where TimeStamp > ago(2d)
```

```
| summarize activityCount =
```

	▼
avg()	
count()	
sum()	

```
by FolderPath, FileName,
```

```
ActionType, AccountDisplayName
```

```
| where activityCount > 5
```

NEW QUESTION 4

- (Topic 1)

You need to complete the query for failed sign-ins to meet the technical requirements. Where can you find the column name to complete the where clause?

- A. Security alerts in Azure Security Center
- B. Activity log in Azure
- C. Azure Advisor
- D. the query windows of the Log Analytics workspace

Answer: D

NEW QUESTION 5

DRAG DROP - (Topic 2)

You need to add notes to the events to meet the Azure Sentinel requirements.

Which three actions should you perform in sequence? To answer, move the appropriate actions from the list of action to the answer area and arrange them in the correct order.

Actions

Add a bookmark and map an entity.

From Azure Monitor, run a Log Analytics query.

Add the query to favorites.

Select a query result.

From the Azure Sentinel workspace, run a Log Analytics query.

Answer Area

⬅

➡

⬆

⬆

- A. Mastered
- B. Not Mastered

Answer: A

Explanation:

Actions

Add a bookmark and map an entity.

From Azure Monitor, run a Log Analytics query.

Add the query to favorites.

Select a query result.

From the Azure Sentinel workspace, run a Log Analytics query.

Answer Area

⬅

➡

⬆

⬆

From the Azure Sentinel workspace, run a Log Analytics query.

Select a query result.

Add a bookmark and map an entity.

NEW QUESTION 6

- (Topic 2)
You need to modify the anomaly detection policy settings to meet the Microsoft Defender for Cloud Apps requirements and resolve the reported problem. Which policy should you modify?

- A. Activity from suspicious IP addresses
- B. Risky sign-in
- C. Activity from anonymous IP addresses
- D. Impossible travel

Answer: D

NEW QUESTION 7

- (Topic 2)
You need to restrict cloud apps running on CLIENT1 to meet the Microsoft Defender for Endpoint requirements. Which two configurations should you modify? Each correct answer present part of the solution.
NOTE: Each correct selection is worth one point.

- A. the Onboarding settings from Device management in Microsoft Defender Security Center
- B. Cloud App Security anomaly detection policies
- C. Advanced features from Settings in Microsoft Defender Security Center
- D. the Cloud Discovery settings in Cloud App Security

Answer: CD

Explanation:
All Cloud App Security unsanctioned apps must be blocked on the Windows 10 computers by using Microsoft Defender for Endpoint.
Reference:

<https://docs.microsoft.com/en-us/cloud-app-security/mde-govern>

NEW QUESTION 8

HOTSPOT - (Topic 2)

You need to configure the Microsoft Sentinel integration to meet the Microsoft Sentinel requirements. What should you do? To answer, select the appropriate options in the answer area. NOTE: Each correct selection is worth one point.

Answer Area

In the Microsoft Defender for Cloud Apps portal:

Add a security extension

Add a security extension

Configure app connectors

Configure log collectors

From Microsoft Sentinel in the Azure portal:

Add a data connector

Add a data connector

Add a workbook

Configure the Logs settings

- A. Mastered
- B. Not Mastered

Answer: A

Explanation:

Answer Area

In the Microsoft Defender for Cloud Apps portal:

Add a security extension

Add a security extension

Configure app connectors

Configure log collectors

From Microsoft Sentinel in the Azure portal:

Add a data connector

Add a data connector

Add a workbook

Configure the Logs settings

NEW QUESTION 9

- (Topic 2)

You need to modify the anomaly detection policy settings to meet the Cloud App Security requirements. Which policy should you modify?

- A. Activity from suspicious IP addresses
- B. Activity from anonymous IP addresses
- C. Impossible travel
- D. Risky sign-in

Answer: C

Explanation:

Reference:
<https://docs.microsoft.com/en-us/cloud-app-security/anomaly-detection-policy>

NEW QUESTION 10

HOTSPOT - (Topic 3)

You need to implement the query for Workbook1 and Webapp1. The solution must meet the Microsoft Sentinel requirements. How should you configure the query? To answer, select the appropriate options in the answer area. NOTE: Each correct selection is worth one point.

Answer Area

Data source to query:

JSON

A custom endpoint

A custom resource provider

JSON

On Webapp1:

Enable Cross-Origin Resource Sharing (CORS).

Enable Cross-Origin Resource Sharing (CORS).

Enable Same Origin Policy (SOP).

Enforce TLS 1.2.

- A. Mastered
- B. Not Mastered

Answer: A

Explanation:

Answer Area

Data source to query:

JSON

A custom endpoint

A custom resource provider

JSON

On Webapp1:

Enable Cross-Origin Resource Sharing (CORS).

Enable Cross-Origin Resource Sharing (CORS).

Enable Same Origin Policy (SOP).

Enforce TLS 1.2.

NEW QUESTION 10

- (Topic 3)
You need to ensure that the Group1 members can meet the Microsoft Sentinel requirements.
Which role should you assign to Group1?

- A. Microsoft Sentinel Automation Contributor
- B. Logic App Contributor
- C. Automation Operator
- D. Microsoft Sentinel Playbook Operator

Answer: D

NEW QUESTION 13

- (Topic 3)
You need to implement the Defender for Cloud requirements. Which subscription-level role should you assign to Group1?

- A. Security Admin
- B. Owner
- C. Security Assessment Contributor
- D. Contributor

Answer: B

NEW QUESTION 17

HOTSPOT - (Topic 3)
You need to implement the ASIM query for DNS requests. The solution must meet the Microsoft Sentinel requirements. How should you configure the query? To answer, select the appropriate options in the answer area. NOTE: Each correct selection is worth one point.

Answer Area

ASIM parser:

Im Dns

Im Dns

_Im_Dns_InfobloxNIOs

imDns

Filter:

A filtering parameter

A filtering parameter

A pack parameter

The WHERE clause

- A. Mastered
- B. Not Mastered

Answer: A

Explanation:

Answer Area

ASIM parser:

Im Dns

Im Dns

_Im_Dns_InfobloxNIOs

imDns

Filter:

A filtering parameter

A filtering parameter

A pack parameter

The WHERE clause

NEW QUESTION 21

- (Topic 3)

You need to implement the scheduled rule for incident generation based on rulequery1. What should you configure first?

- A. entity mapping
- B. custom details
- C. event grouping
- D. alert details

Answer: D

NEW QUESTION 22

- (Topic 4)

You use Azure Sentinel.

You need to receive an immediate alert whenever Azure Storage account keys are enumerated. Which two actions should you perform? Each correct answer presents part of the solution.

NOTE: Each correct selection is worth one point.

- A. Create a livestream
- B. Add a data connector
- C. Create an analytics rule
- D. Create a hunting query.
- E. Create a bookmark.

Answer: BC

Explanation:

B: To add a data connector, you would use the Azure Sentinel data connectors feature to connect to your Azure subscription and to configure log data collection for Azure Storage account key enumeration events.

C: After adding the data connector, you need to create an analytics rule to analyze the log data from the Azure storage connector, looking for the specific event of Azure storage account keys enumeration. This rule will trigger an alert when it detects the specific event, allowing you to take immediate action.

NEW QUESTION 24

- (Topic 4)

You implement Safe Attachments policies in Microsoft Defender for Office 365.

Users report that email messages containing attachments take longer than expected to be received.

You need to reduce the amount of time it takes to deliver messages that contain attachments without compromising security. The attachments must be scanned for malware, and any messages that contain malware must be blocked.

What should you configure in the Safe Attachments policies?

- A. Dynamic Delivery
- B. Replace
- C. Block and Enable redirect
- D. Monitor and Enable redirect

Answer: A

Explanation:

Reference:

<https://docs.microsoft.com/en-us/microsoft-365/security/office-365-security/safe-attachments?view=o365-worldwide>

NEW QUESTION 25

- (Topic 4)

You have a custom analytics rule to detect threats in Azure Sentinel.

You discover that the analytics rule stopped running. The rule was disabled, and the rule name has a prefix of AUTO DISABLED.

What is a possible cause of the issue?

- A. There are connectivity issues between the data sources and Log Analytics.
- B. The number of alerts exceeded 10,000 within two minutes.
- C. The rule query takes too long to run and times out.
- D. Permissions to one of the data sources of the rule query were modified.

Answer: D

Explanation:

Reference:

<https://docs.microsoft.com/en-us/azure/sentinel/tutorial-detect-threats-custom>

NEW QUESTION 28

- (Topic 4)

You use Microsoft Sentinel.

You need to receive an alert in near real-time whenever Azure Storage account keys are enumerated. Which two actions should you perform? Each correct answer presents part of the solution. NOTE: Each correct selection is worth one point

- A. Create a bookmark.
- B. Create an analytics rule.
- C. Create a livestream.
- D. Create a hunting query.
- E. Add a data connector.

Answer: DE

NEW QUESTION 31

DRAG DROP - (Topic 4)

You have an Azure Functions app that generates thousands of alerts in Azure Security Center each day for normal activity. You need to hide the alerts automatically in Security Center.

Which three actions should you perform in sequence in Security Center? Each correct answer presents part of the solution.

NOTE: Each correct selection is worth one point.

Actions	Answer area
Select Pricing & settings.	
Select Security alerts.	
Select IP as the entity type and specify the IP address.	⏪ ⏩
Select Azure Resource as the entity type and specify the ID.	⏪ ⏩
Select Suppression rules, and then select Create new suppression rule.	
Select Security policy.	

- A. Mastered
- B. Not Mastered

Answer: A

Explanation:

Actions	Answer area
Select Pricing & settings.	
Select Security alerts.	
Select IP as the entity type and specify the IP address.	
Select Azure Resource as the entity type and specify the ID.	
Select Suppression rules, and then select Create new suppression rule.	
Select Security policy.	

NEW QUESTION 34

- (Topic 4)

Note: This question is part of a series of questions that present the same scenario. Each question in the series contains a unique solution that might meet the stated goals. Some question sets might have more than one correct solution, while others might not have a correct solution.

After you answer a question in this section, you will NOT be able to return to it. As a result, these questions will not appear in the review screen.

You are configuring Azure Sentinel.

You need to create an incident in Azure Sentinel when a sign-in to an Azure virtual machine from a malicious IP address is detected.

Solution: You create a hunting bookmark. Does this meet the goal?

- A. Yes
- B. No

Answer: B

Explanation:

Reference:

<https://docs.microsoft.com/en-us/azure/sentinel/connect-azure-security-center>

NEW QUESTION 36

- (Topic 4)

You have a Microsoft 365 subscription. The subscription uses Microsoft 365 Defender and has data loss prevention (DLP) policies that have aggregated alerts configured.

You need to identify the impacted entities in an aggregated alert.

What should you review in the DIP alert management dashboard of the Microsoft Purview compliance portal?

- A. the Details tab of the alert
- B. Management log
- C. the Sensitive Info Types tab of the alert
- D. the Events tab of the alert

Answer: B

NEW QUESTION 41

HOTSPOT - (Topic 4)

You have the following SQL query.

```
let IPList = _GetWatchlist('Bad_IPs');
Event
| where Source == "Microsoft-Windows-Sysmon"
| where EventID == 3
| extend EvData = parse_xml(EventData)
| extend EventDetail = EvData.DataItem.EventData.Data
| extend SourceIP = EventDetail.[9].["#text"], DestinationIP = EventDetail.[14].["#text"]
| where SourceIP in (IPList) or DestinationIP in (IPList)
| extend IPMatch = case( SourceIP in (IPList), "SourceIP", DestinationIP in (IPList), "DestinationIP", "None")
| extend timestamp = TimeGenerated, AccountCustomEntitv = Username, HostCustomEntitv = Computer, '
```

Answer Area

Statements	Yes	No
The <code>UserName</code> field is set as the account entity.	<input type="radio"/>	<input type="radio"/>
The watchlist cannot be updated after it is created.	<input type="radio"/>	<input type="radio"/>
The <code>IPList</code> variable is set as the IP address entity.	<input type="radio"/>	<input type="radio"/>

- A. Mastered
- B. Not Mastered

Answer: A

Explanation:

Answer Area

Statements	Yes	No
The <code>UserName</code> field is set as the account entity.	<input type="radio"/>	<input checked="" type="radio"/>
The watchlist cannot be updated after it is created.	<input type="radio"/>	<input checked="" type="radio"/>
The <code>IPList</code> variable is set as the IP address entity.	<input type="radio"/>	<input checked="" type="radio"/>

NEW QUESTION 43

DRAG DROP - (Topic 4)

You have an Azure subscription that contains 100 Linux virtual machines.

You need to configure Microsoft Sentinel to collect event logs from the virtual machines. Which three actions should you perform in sequence? To answer, move the appropriate

actions from the list of actions to the answer area and arrange them in the correct order.

Actions

Add a Syslog connector to the workspace.

Add an Microsoft Sentinel workbook.

Add Microsoft Sentinel to a workspace.

Install the Log Analytics agent for Linux on the virtual machines.

Add a Security Events connector to the workspace.

Answer Area

- A. Mastered
- B. Not Mastered

Answer: A

Explanation:



NEW QUESTION 46

- (Topic 4)

You have a Microsoft Sentinel workspace named Workspace1 and 200 custom Advanced Security Information Model (ASIM) parsers based on the DNS schema. You need to make the 200 parsers available in Workspace1. The solution must minimize administrative effort. What should you do first?

- A. Copy the parsers to the Azure Monitor Logs page.
- B. Create a JSON file based on the DNS template.
- C. Create an XML file based on the DNS template.
- D. Create a YAML file based on the DNS template.

Answer: A

NEW QUESTION 51

- (Topic 4)

You have a Microsoft Sentinel workspace.

You enable User and Entity Behavior Analytics (UEBA) by using Audit logs and Signin logs. The following entities are detected in the Azure AD tenant:

- App name: App1
- IP address: 192.168.1.2
- Computer name: Device1
- Used client app: Microsoft Edge
- Email address: user1@company.com
- Sign-in URL: https://www.company.com

Which entities can be investigated by using UEBA?

- A. app name, computer name, IP address, email address, and used client app only
- B. IP address and email address only
- C. used client app and app name only
- D. IP address only

Answer: D

NEW QUESTION 55

HOTSPOT - (Topic 4)

You have a Microsoft Sentinel workspace that contains a custom workbook.

You need to query the number of daily security alerts. The solution must meet the following requirements:

- Identify alerts that occurred during the last 30 days.
- Display the results in a timechart.

How should you complete the query? To answer, select the appropriate options in the answer area. NOTE: Each correct selection is worth one point.

Answer Area



- A. Mastered
- B. Not Mastered

Answer: A

Explanation:

Answer Area



NEW QUESTION 60

HOTSPOT - (Topic 4)

You have a Microsoft 365 E5 subscription that uses Microsoft Teams.

You need to perform a content search of Teams chats for a user by using the Microsoft Purview compliance portal. The solution must minimize the scope of the search.

How should you configure the content search? To answer, select the appropriate options in the answer area.

NOTE: Each correct selection is worth one point.

Answer Area

The form shows two dropdown menus. The first is labeled "Locations:" and has a list of options: "Exchange mailboxes", "Exchange mailboxes", "Exchange public folders", and "SharePoint sites". The second is labeled "Keywords:" and has a list of options: "Kind", "Category", "ItemClass", and "Kind".

- A. Mastered
- B. Not Mastered

Answer: A

Explanation:

Answer Area

The form shows two dropdown menus. The first is labeled "Locations:" and has a list of options: "Exchange mailboxes", "Exchange mailboxes", "Exchange public folders", and "SharePoint sites". The second is labeled "Keywords:" and has a list of options: "Kind", "Category", "ItemClass", and "Kind".

NEW QUESTION 62

- (Topic 4)

You recently deployed Azure Sentinel.

You discover that the default Fusion rule does not generate any alerts. You verify that the rule is enabled.

You need to ensure that the Fusion rule can generate alerts. What should you do?

- A. Disable, and then enable the rule.
- B. Add data connectors
- C. Create a new machine learning analytics rule.
- D. Add a hunting bookmark.

Answer: B

Explanation:

Reference:

<https://docs.microsoft.com/en-us/azure/sentinel/connect-data-sources>

NEW QUESTION 67

HOTSPOT - (Topic 4)

You have an Azure subscription that has Azure Defender enabled for all supported resource types.

You create an Azure logic app named LA1.

You plan to use LA1 to automatically remediate security risks detected in Azure Security Center.

View the window

You need to test LA1 in Security Center.

What should you do? To answer, select the appropriate options in the answer area. NOTE: Each correct selection is worth one point.

Answer Area

Set the LA1 trigger to:

▼
When an Azure Security Center Recommendation is created or triggered
When an Azure Security Center Alert is created or triggered
When a response to an Azure Security Center alert is triggered

Trigger the execution of LA1 from:

▼
Recommendations
Workflow automation

- A. Mastered
- B. Not Mastered

Answer: A

Explanation:

Answer Area

Set the LA1 trigger to:

▼
When an Azure Security Center Recommendation is created or triggered
When an Azure Security Center Alert is created or triggered
When a response to an Azure Security Center alert is triggered

Trigger the execution of LA1 from:

▼
Recommendations
Workflow automation

NEW QUESTION 70

- (Topic 4)

You have an Azure subscription that uses Microsoft Defender for Cloud.

You have an Amazon Web Services (AWS) subscription. The subscription contains multiple virtual machines that run Windows Server.

You need to enable Microsoft Defender for Servers on the virtual machines.

Which two actions should you perform? Each correct answer presents part of the solution. NOTE: Each correct answer is worth one point.

- A. From Defender for Cloud, enable agentless scanning.
- B. Install the Azure Virtual Machine Agent (VM Agent) on each virtual machine.
- C. Onboard the virtual machines to Microsoft Defender for Endpoint.
- D. From Defender for Cloud, configure auto-provisioning.
- E. From Defender for Cloud, configure the AWS connector.

Answer: BC

NEW QUESTION 74

HOTSPOT - (Topic 4)

You have a Microsoft 365 E5 subscription.

You plan to perform cross-domain investigations by using Microsoft 365 Defender.

You need to create an advanced hunting query to identify devices affected by a malicious email attachment.

How should you complete the query? To answer, select the appropriate options in the answer area.

NOTE: Each correct selection is worth one point.

Answer Area

EmailAttachmentInfo

| where SenderFromAddress =~ "MaliciousSender@example.com"

| where isnotempty (SHA256)

|

	▼
extend	
join	
project	
union	

 (

DeviceFileEvents

|

	▼
extend	
join	
project	
union	

 FileName, SHA256

) on SHA256

|

	▼
extend	
join	
project	
union	

 Timestamp, FileName, SHA256, DeviceName, DeviceId,

NetworkMessageId, SenderFromAddress, RecipientEmailAddress

- A. Mastered
- B. Not Mastered

Answer: A

Explanation:

Answer Area

EmailAttachmentInfo

| where SenderFromAddress =~ "MaliciousSender@example.com"

| where isnotempty (SHA256)

|

	▼	(
extend		
join		
project		
union		

DeviceFileEvents

|

	▼	FileName, SHA256
extend		
join		
project		
union		

) on SHA256

|

	▼	Timestamp, FileName, SHA256, DeviceName, DeviceId,
extend		
join		
project		
union		

NetworkMessageId, SenderFromAddress, RecipientEmailAddress

NEW QUESTION 78

HOTSPOT - (Topic 4)

You need to use an Azure Resource Manager template to create a workflow automation that will trigger an automatic remediation when specific security alerts are received by Azure Security Center.

How should you complete the portion of the template that will provision the required Azure resources? To answer, select the appropriate options in the answer area.

NOTE: Each correct selection is worth one point.

```
"resources": [
  {
    "type": "Microsoft.Automation/automations",
    "apiVersion": "2019-01-01-preview",
    "name": "[parameters('name')]",
    "location": "[parameters('location')]",
    "properties": {
      "description": "[format(variables('description'), '{0}', parameters('subscriptionId'))]",
      "isEnabled": true,
      "actions": [
        {
          "actionType": "LogicApp",
          "logicAppResourceId": "[resourceId('ITEM2/workflows', parameters('appName'))]",
          "uri": "[listCallbackURL(resourceId(parameters('subscriptionId'), parameters('resourceGroupName'), 'Microsoft.Automation/workflows/triggers', parameters('appName'), 'manual'), '2019-05-01').value]"
        }
      ]
    }
  },
]
```

- A. Mastered
- B. Not Mastered

Answer: A

Explanation:

```

"resources": [
  {
    "type": "Microsoft.Automation",
    "apiVersion": "2019-01-01-preview",
    "name": "[parameters('name')]",
    "location": "[parameters('location')]",
    "properties": {
      "description": "[format(variables('description'), '{0}', parameters('subscriptionId'))]",
      "isEnabled": true,
      "actions": [
        {
          "actionType": "LogicApp",
          "logicAppResourceId": "[resourceId('ITEM2/workflows', parameters('appName'))]",
          "uri": "[listCallbackURL(resourceId(parameters('subscriptionId'), parameters('resourceGroupName'), 'Microsoft.Automation/workflows/triggers', parameters('appName'), 'manual'), '2019-05-01').value]"
        }
      ]
    }
  }
],

```

NEW QUESTION 81

- (Topic 4)

You have a custom Microsoft Sentinel workbook named Workbooks.

You need to add a grid to Workbook1. The solution must ensure that the grid contains a maximum of 100 rows.

What should you do?

- A. In the query editor interface, configure Settings.
- B. In the query editor interface, select Advanced Editor
- C. In the grid query, include the project operator.
- D. In the grid query, include the take operator.

Answer: B

NEW QUESTION 85

- (Topic 4)

You need to receive a security alert when a user attempts to sign in from a location that was never used by the other users in your organization to sign in.

Which anomaly detection policy should you use?

- A. Impossible travel
- B. Activity from anonymous IP addresses
- C. Activity from infrequent country
- D. Malware detection

Answer: C

Explanation:

Activity from a country/region that could indicate malicious activity. This policy profiles your environment and triggers alerts when activity is detected from a location that was not recently or was never visited by any user in the organization. Activity from the same user in different locations within a time period that is shorter than the expected travel time between the two locations. This can indicate a credential breach, however, it's also possible that the user's actual location is masked, for example, by using a VPN.

Reference:

<https://docs.microsoft.com/en-us/cloud-app-security/anomaly-detection-policy>

NEW QUESTION 88

- (Topic 4)

You have an Azure subscription named Sub1 and a Microsoft 365 subscription. Sub1 is linked to an Azure Active Directory (Azure AD) tenant named contoso.com.

You create an Azure Sentinel workspace named workspace1. In workspace1, you activate an Azure AD connector for contoso.com and an Office 365 connector for the Microsoft 365 subscription.

You need to use the Fusion rule to detect multi-staged attacks that include suspicious sign- ins to contoso.com followed by anomalous Microsoft Office 365 activity.

Which two actions should you perform? Each correct answer present part of the solution

NOTE: Each correct selection is worth one point.

- A. Create custom rule based on the Office 365 connector templates.
- B. Create a Microsoft incident creation rule based on Microsoft Defender for Cloud.
- C. Create a Microsoft Cloud App Security connector.
- D. Create an Azure AD Identity Protection connector.

Answer: AB

Explanation:

To use the Fusion rule to detect multi-staged attacks that include suspicious sign-ins to contoso.com followed by anomalous Microsoft Office 365 activity, you should perform the following two actions:

? Create an Azure AD Identity Protection connector. This will allow you to monitor suspicious activities in your Azure AD tenant and detect malicious sign-ins.

? Create a custom rule based on the Office 365 connector templates. This will allow you to monitor and detect anomalous activities in the Microsoft 365 subscription. Reference: <https://docs.microsoft.com/en-us/azure/sentinel/fusion-rules>

NEW QUESTION 91

- (Topic 4)

You plan to create a custom Azure Sentinel query that will provide a visual representation of the security alerts generated by Azure Security Center.

You need to create a query that will be used to display a bar graph. What should you include in the query?

- A. extend
- B. bin
- C. count
- D. workspace

Answer: B

Explanation:

Reference:

<https://docs.microsoft.com/en-us/azure/azure-monitor/visualize/workbooks-chart-visualizations>

NEW QUESTION 93

- (Topic 4)

You need to correlate data from the SecurityEvent Log Anarytks table to meet the Microsoft Sentinel requirements for using UEBA. Which Log Analytics table should you use?

- A. SentwIAuoNt
- B. AADRiskyUsers
- C. IdentityOirectoryEvents
- D. Identityinfo

Answer: C

NEW QUESTION 94

HOTSPOT - (Topic 4)

You need to create a query for a workbook. The query must meet the following requirements:

? List all incidents by incident number.

? Only include the most recent log for each incident.

How should you complete the query? To answer, select the appropriate options in the answer area.

NOTE: Each correct selection is worth one point.

`SecurityIncident`

	<div><div></div><div>project</div><div>sort</div><div>summarize</div></div>	<div><div></div><div>arg_max</div><div>limit</div><div>top</div></div>	<code>(LasModifiedTime,*) by IncidentNumber</code>
--	---	--	--

- A. Mastered
- B. Not Mastered

Answer: A

Explanation:

`SecurityIncident`

	<div><div></div><div>project</div><div>sort</div><div>summarize</div></div>	<div><div></div><div>arg_max</div><div>limit</div><div>top</div></div>	<code>(LasModifiedTime,*) by IncidentNumber</code>
--	---	--	--

NEW QUESTION 96

HOTSPOT - (Topic 4)

You have an Azure subscription that is linked to a hybrid Azure AD tenant and contains a Microsoft Sentinel workspace named Sentinel1.

You need to enable User and Entity Behavior Analytics (UEBA) for Sentinel 1 and configure UEBA to use data collected from Active Directory Domain Services (AD OS).

What should you do? To answer, select the appropriate options in the answer area. NOTE: Each correct selection is worth one point.

Answer Area

To the AD DS domain controllers, deploy:

The Azure Connected Machine agent

Microsoft Defender for Identity sensors

The Azure Connected Machine agent

The Azure Monitor agent

For Sentinel1, configure:

The Audit Logs data source

The Audit Logs data source

The Security Events data source

The Signin Logs data source

- A. Mastered
- B. Not Mastered

Answer: A

Explanation:

Answer Area

To the AD DS domain controllers, deploy:

The Azure Connected Machine agent

Microsoft Defender for Identity sensors

The Azure Connected Machine agent

The Azure Monitor agent

For Sentinel1, configure:

The Audit Logs data source

The Audit Logs data source

The Security Events data source

The Signin Logs data source

NEW QUESTION 97

HOTSPOT - (Topic 4)

You have an Azure subscription that contains an Microsoft Sentinel workspace.

You need to create a hunting query using Kusto Query Language (KQL) that meets the following requirements:

- Identifies an anomalous number of changes to the rules of a network security group (NSG) made by the same security principal
- Automatically associates the security principal with an Microsoft Sentinel entity

How should you complete the query? To answer, select the appropriate options in the answer area. NOTE: Each correct selection is worth one point.

AuditLogs

AzureActivity

AzureDiagnostics

in~ ("Microsoft.Network/networkSecurityGroups/securityRules/write")

e == "Succeeded"

| make-series dcount(ResourceId) default=0 on EventSubmissionTimestamp in range(ago(7d), now(), 1d) by Caller

| extend timestamp = todatetime(EventSubmissionTimestamp[0])

AccountCustomEntity = Caller

| extend

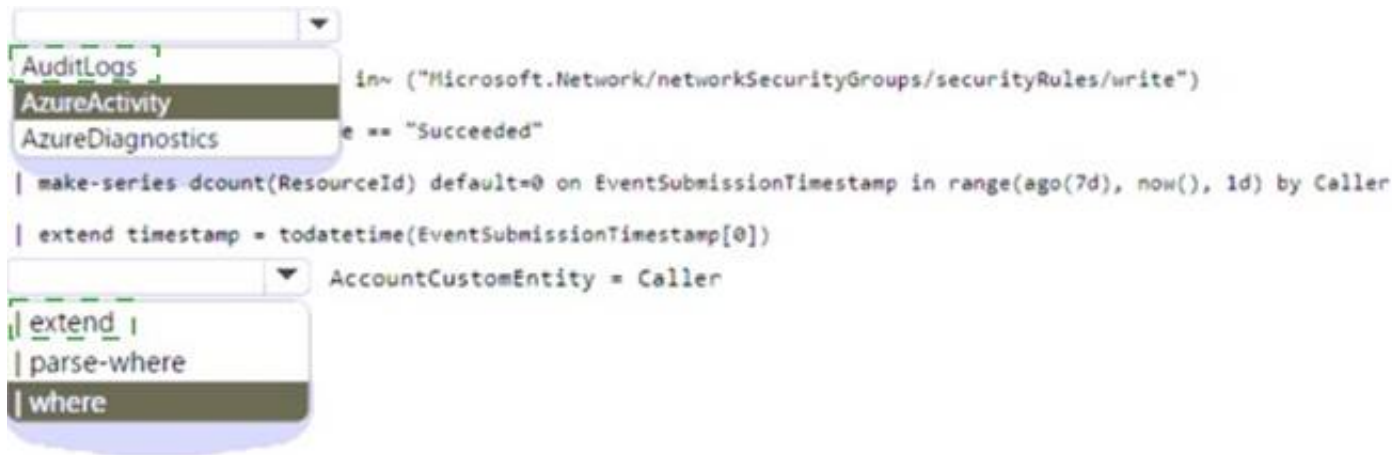
| parse-where

| where

- A. Mastered
- B. Not Mastered

Answer: A

Explanation:



NEW QUESTION 99

- (Topic 4)

Note: This question is part of a series of questions that present the same scenario. Each question in the series contains a unique solution that might meet the stated goals. Some question sets might have more than one correct solution, while others might not have a correct solution.

After you answer a question in this section, you will NOT be able to return to it. As a result, these questions will not appear in the review screen.

You are configuring Azure Sentinel.

You need to create an incident in Azure Sentinel when a sign-in to an Azure virtual machine from a malicious IP address is detected.

Solution: You create a Microsoft incident creation rule for a data connector. Does this meet the goal?

- A. Yes
- B. No

Answer: A

Explanation:

Reference:

<https://docs.microsoft.com/en-us/azure/sentinel/connect-azure-security-center>

NEW QUESTION 100

- (Topic 4)

You are responsible for responding to Azure Defender for Key Vault alerts.

During an investigation of an alert, you discover unauthorized attempts to access a key vault from a Tor exit node.

What should you configure to mitigate the threat?

- A. Key Vault firewalls and virtual networks
- B. Azure Active Directory (Azure AD) permissions
- C. role-based access control (RBAC) for the key vault
- D. the access policy settings of the key vault

Answer: A

Explanation:

Reference:

<https://docs.microsoft.com/en-us/azure/key-vault/general/network-security>

NEW QUESTION 101

- (Topic 4)

You have an Azure subscription that uses Microsoft Defender for Cloud.

You have an Amazon Web Services (AWS) account that contains an Amazon Elastic Compute Cloud (EC2) instance named EC2-1.

You need to onboard EC2-1 to Defender for Cloud. What should you install on EC2-1?

- A. the Log Analytics agent
- B. the Azure Connected Machine agent
- C. the unified Microsoft Defender for Endpoint solution package
- D. Microsoft Monitoring Agent

Answer: A

NEW QUESTION 106

- (Topic 4)

Your company uses line-of-business apps that contain Microsoft Office VBA macros.

You plan to enable protection against downloading and running additional payloads from the Office VBA macros as additional child processes.

You need to identify which Office VBA macros might be affected.

Which two commands can you run to achieve the goal? Each correct answer presents a complete solution.

NOTE: Each correct selection is worth one point.

- A. `Add-MpPreference -AttackSurfaceReductionRules_Ids D4F940AB -401B -4EFC -AADC -AD5F3C50688A -AttackSurfaceReductionRules_Actions Enabled`
- B. `Set-MpPreference -AttackSurfaceReductionRules_Ids D4F940AB -401B -4EFC -AADC -AD5F3C50688A -AttackSurfaceReductionRules_Actions AuditMode`
- C. `Add-MpPreference -AttackSurfaceReductionRules_Ids D4F940AB -401B -4EFC -AADC -AD5F3C50688A -AttackSurfaceReductionRules_Actions AuditMode`
- D. `Set-MpPreference -AttackSurfaceReductionRules_Ids D4F940AB -401B -4EFC -AADC -AD5F3C50688A -AttackSurfaceReductionRules_Actions Enabled`

- A. Option A
- B. Option B
- C. Option C
- D. Option D

Answer: BC

Explanation:

Reference:

<https://docs.microsoft.com/en-us/windows/security/threat-protection/microsoft-defender-atp/attack-surface-reduction>

NEW QUESTION 110

HOTSPOT - (Topic 4)

You have an Microsoft Sentinel workspace named SW1.

You plan to create a custom workbook that will include a time chart.

You need to create a query that will identify the number of security alerts per day for each provider.

How should you complete the query? To answer, select the appropriate options in the answer area.

NOTE: Each correct selection is worth one point.

Answer Area

SecurityAlert

```
| where TimeGenerated >= ago(30d)
| summarize count() by ProviderName,
```

timechart

render

materialize

project

render

(TimeGenerated, 1d)

bin

bin

series_add

series_fill_linear

take

- A. Mastered
- B. Not Mastered

Answer: A

Explanation:

Answer Area

SecurityAlert

```
| where TimeGenerated >= ago(30d)
| summarize count() by ProviderName,
```

timechart

render

materialize

project

render

(TimeGenerated, 1d)

bin

bin

series_add

series_fill_linear

take

NEW QUESTION 114

DRAG DROP - (Topic 4)

You are investigating an incident by using Microsoft 365 Defender.

You need to create an advanced hunting query to detect failed sign-in authentications on

three devices named CFOLaptop, CEOLaptop, and COOLaptop.

How should you complete the query? To answer, select the appropriate options in the answer area.

NOTE: Each correct selection is worth one point.

Values

Answer Area

```
| project LogonFailures=count()
```

```
| summarize LogonFailures=count()  
by DeviceName, LogonType
```

```
| where ActionType ==  
FailureReason
```

```
| where DeviceName in ("CFOLaptop,  
"CEOLaptop", "COOLaptop")
```

```
ActionType == "LogonFailed"
```

and

- A. Mastered
- B. Not Mastered

Answer: A

Explanation:

Values

Answer Area

```
| project LogonFailures=count()
```

```
| summarize LogonFailures=count()  
by DeviceName, LogonType
```

```
| where ActionType ==  
FailureReason
```

```
| where DeviceName in ("CFOLaptop,  
"CEOLaptop", "COOLaptop")
```

```
ActionType == "LogonFailed"
```

```
| summarize LogonFailures=count()  
by DeviceName, LogonType
```

```
| where DeviceName in ("CFOLaptop,  
"CEOLaptop", "COOLaptop")
```

```
| where ActionType ==  
FailureReason
```

```
ActionType == "LogonFailed"
```

```
| project LogonFailures=count()
```

and

NEW QUESTION 117

DRAG DROP - (Topic 4)

You have resources in Azure and Google cloud.

You need to ingest Google Cloud Platform (GCP) data into Azure Defender.

In which order should you perform the actions? To answer, move all actions from the list of actions to the answer area and arrange them in the correct order.

Actions

Answer Area

Enable Security Health Analytics.

From Azure Security Center, add cloud connectors.

Configure the GCP Security Command Center.

Create a dedicated service account and a private key.

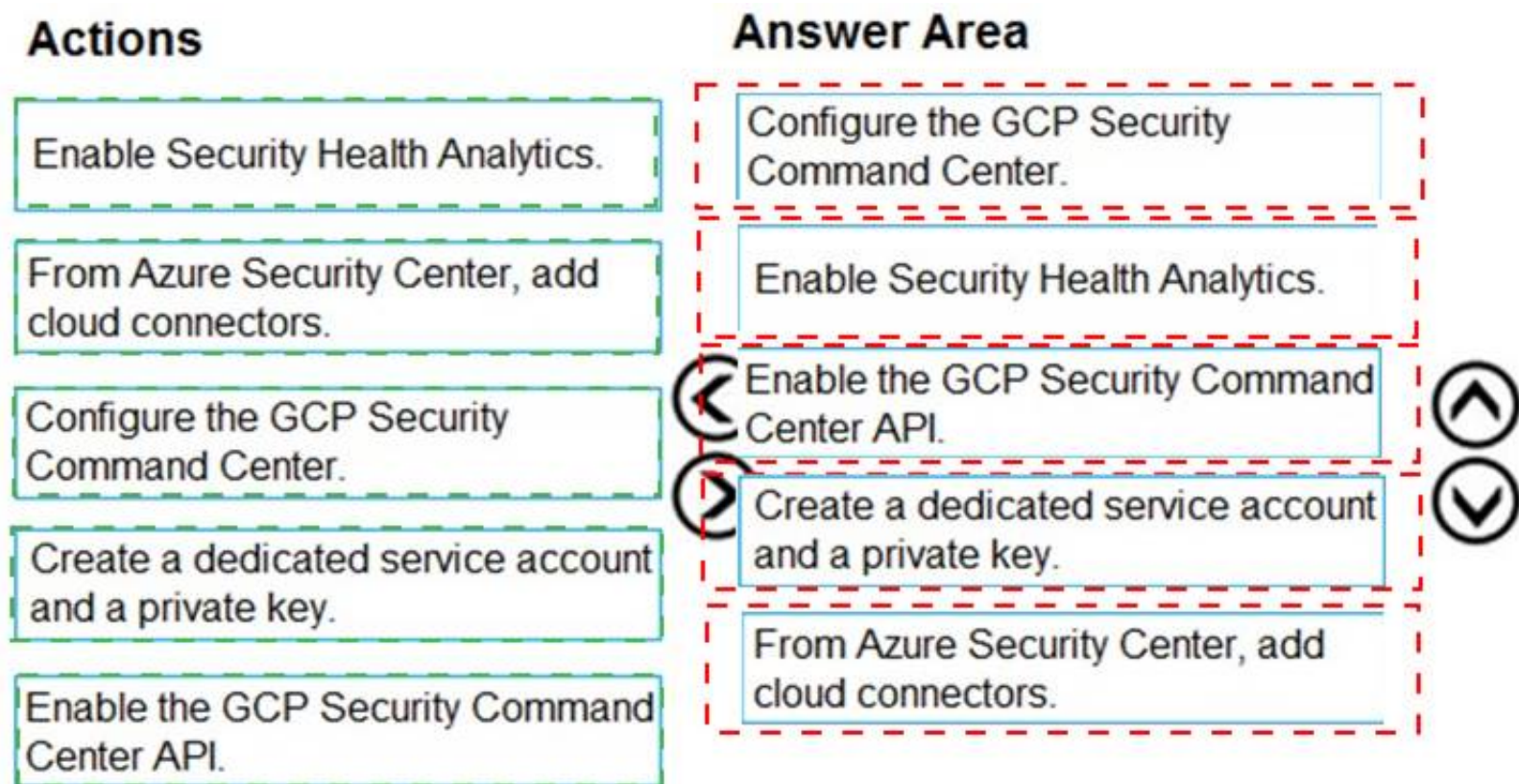
Enable the GCP Security Command Center API.



- A. Mastered
- B. Not Mastered

Answer: A

Explanation:



NEW QUESTION 119

- (Topic 4)

You use Azure Sentinel.

You need to use a built-in role to provide a security analyst with the ability to edit the queries of custom Azure Sentinel workbooks. The solution must use the principle of least privilege.

Which role should you assign to the analyst?

- A. Azure Sentinel Contributor
- B. Security Administrator
- C. Azure Sentinel Responder
- D. Logic App Contributor

Answer: C

Explanation:

Azure Sentinel Contributor can create and edit workbooks, analytics rules, and other Azure Sentinel resources.

Reference:

<https://docs.microsoft.com/en-us/azure/sentinel/roles>

NEW QUESTION 122

- (Topic 4)

You have a Microsoft Sentinel workspace.

You receive multiple alerts for failed sign in attempts to an account. You identify that the alerts are false positives.

You need to prevent additional failed sign-in alerts from being generated for the account. The solution must meet the following requirements.

- Ensure that failed sign-in alerts are generated for other accounts.
- Minimize administrative effort What should do?

- A. Create an automation rule.
- B. Create a watchlist.
- C. Modify the analytics rule.
- D. Add an activity template to the entity behavior.

Answer: A

Explanation:

An automation rule will allow you to specify which alerts should be suppressed, ensuring that failed sign-in alerts are generated for other accounts while minimizing administrative effort. To create an automation rule, navigate to the Automation Rules page in the Microsoft Sentinel workspace and configure the rule parameters to suppress the false positive alerts.

NEW QUESTION 127

- (Topic 4)

Note: This question is part of a series of questions that present the same scenario. Each question in the series contains a unique solution that might meet the stated goals. Some question sets might have more than one correct solution, while others might not have a correct solution.

After you answer a question in this section, you will NOT be able to return to it. As a result, these questions will not appear in the review screen.

You are configuring Microsoft Defender for Identity integration with Active Directory.

From the Microsoft Defender for identity portal, you need to configure several accounts for attackers to exploit.

Solution: You add each account as a Sensitive account. Does this meet the goal?

- A. Yes
- B. No

Answer: B

Explanation:

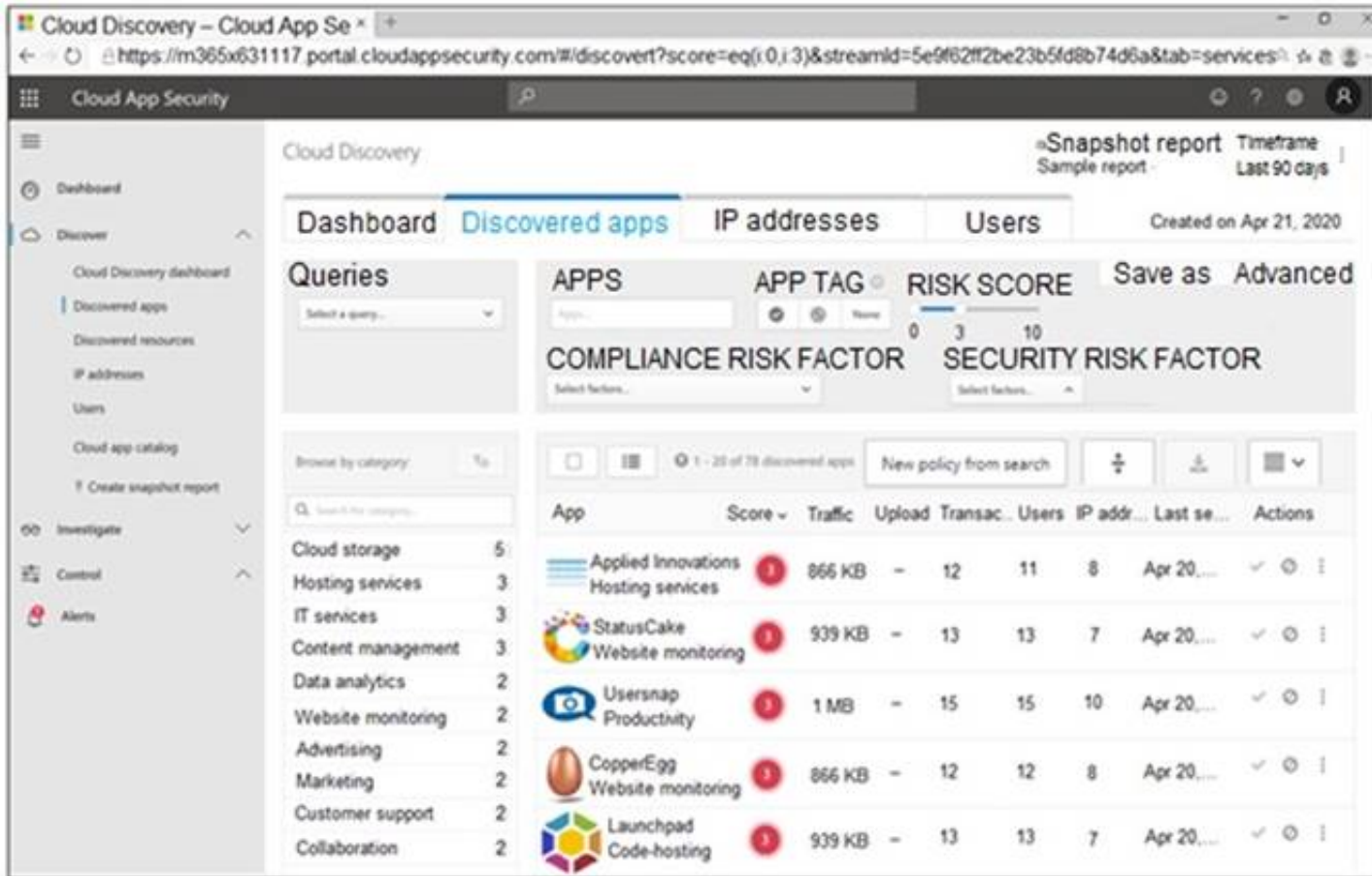
Reference:

<https://docs.microsoft.com/en-us/defender-for-identity/manage-sensitive-honeytoken-accounts>

NEW QUESTION 132

DRAG DROP - (Topic 4)

You open the Cloud App Security portal as shown in the following exhibit.



You need to remediate the risk for the Launchpad app.

Which four actions should you perform in sequence? To answer, move the appropriate actions from the list of actions to the answer area and arrange them in the correct order.

Actions

Answer Area

Tag the app as **Unsanctioned**.

Run the script on the source appliance.

Run the script in Azure Cloud Shell.

Select the app.

Tag the app as **Sanctioned**.

Generate a block script.



- A. Mastered
- B. Not Mastered

Answer: A

Explanation:

Actions

Answer Area

Tag the app as **Unsanctioned**.

Run the script on the source appliance!

Run the script in Azure Cloud Shell.

Select the app.

Tag the app as **Sanctioned**.

Generate a block script.



NEW QUESTION 136

- (Topic 4)

You have an Azure subscription that uses Microsoft Sentinel.

You need to minimize the administrative effort required to respond to the incidents and remediate the security threats detected by Microsoft Sentinel.

Which two features should you use? Each correct answer presents part of the solution.

NOTE: Each correct selection is worth one point.

- A. Microsoft Sentinel bookmarks
- B. Azure Automation runbooks
- C. Microsoft Sentinel automation rules
- D. Microsoft Sentinel playbooks
- E. Azure Functions apps

Answer: CE

Explanation:

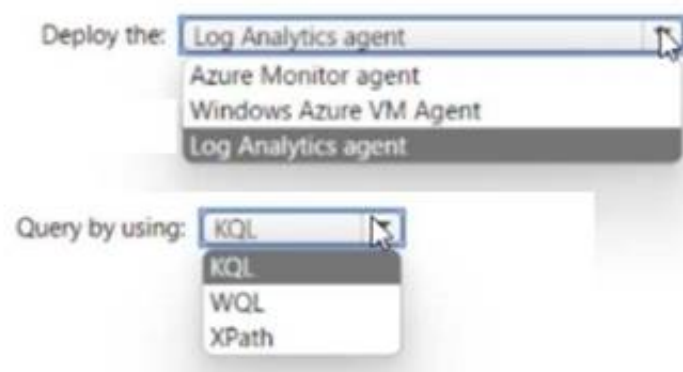
Reference: <https://docs.microsoft.com/en-us/azure/sentinel/tutorial-respond-threats-playbook?tabs=LAC>

NEW QUESTION 139

HOTSPOT - (Topic 4)

You need to meet the Microsoft Sentinel requirements for collecting Windows Security event logs. What should you do? To answer, select the appropriate options in the answer area. NOTE Each correct selection is worth one point.

Answer Area

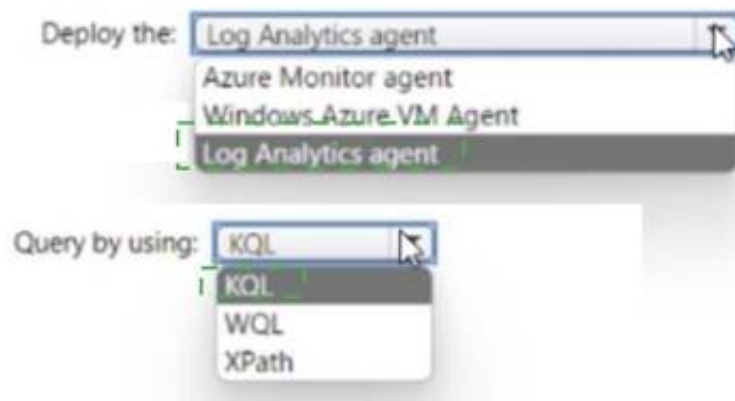


- A. Mastered
- B. Not Mastered

Answer: A

Explanation:

Answer Area



NEW QUESTION 144

HOTSPOT - (Topic 4)

You have a Microsoft 365 E5 subscription that uses Microsoft Defender 365.

Your network contains an on-premises Active Directory Domain Services (AD DS) domain that syncs with Azure AD.

You need to identify the 100 most recent sign-in attempts recorded on devices and AD DS domain controllers.

How should you complete The KQL query? To answer, select the appropriate options in the answer area.

NOTE: Each correct selection is worth one point.

Answer Area

```
DeviceLogonEvents
| extend Table = 'table1'
| take 100
| union
  join kind=full outer
  join kind=inner
  union
    IdentityLogonEvents
    IdentityInfo
    IdentityLogonEvents
    IdentityQueryEvents
| extend Table = 'table2'
| take 100
)
| project-reorder Timestamp, Table, AccountDomain, AccountName, AccountUpn, AccountSid
| order by Timestamp asc
```

- A. Mastered
- B. Not Mastered

Answer: A

Explanation:

Answer Area

```
DeviceLogonEvents
| extend Table = 'table1'
| take 100
| union
  join kind=full outer
  join kind=inner
  union
    IdentityLogonEvents
    IdentityInfo
    IdentityLogonEvents
    IdentityQueryEvents
| extend Table = 'table2'
| take 100
)
| project-reorder Timestamp, Table, AccountDomain, AccountName, AccountUpn, AccountSid
| order by Timestamp asc
```

NEW QUESTION 147

- (Topic 4)
You have an existing Azure logic app that is used to block Azure Active Directory (Azure AD) users. The logic app is triggered manually. You deploy Azure Sentinel. You need to use the existing logic app as a playbook in Azure Sentinel. What should you do first?

- A. And a new scheduled query rule.
- B. Add a data connector to Azure Sentinel.
- C. Configure a custom Threat Intelligence connector in Azure Sentinel.
- D. Modify the trigger in the logic app.

Answer: D

Explanation:

<https://docs.microsoft.com/en-us/azure/sentinel/playbook-triggers-actions> <https://docs.microsoft.com/en-us/azure/sentinel/tutorial-respond-threats-playbook>

NEW QUESTION 148

HOTSPOT - (Topic 4)
You have a Microsoft 365 E5 subscription that contains 200 Windows 10 devices enrolled

in Microsoft Defender for Endpoint.
You need to ensure that users can access the devices by using a remote shell connection directly from the Microsoft 365 Defender portal. The solution must use the principle of least privilege.
What should you do in the Microsoft 365 Defender portal? To answer, select the appropriate options in the answer area.
NOTE: Each correct selection is worth one point.

To configure Microsoft Defender for Endpoint:

▼

Turn on endpoint detection and response (EDR) in block mode

Turn on Live Response

Turn off Tamper Protection

To configure the devices:

▼

Add a network assessment job

Create a device group that contains the devices and set Automation level to Full

Create a device group that contains the devices and set Automation level to No automated response

- A. Mastered
- B. Not Mastered

Answer: A

Explanation:

Box 1: Turn on Live Response
Live response is a capability that gives you instantaneous access to a device by using a remote shell connection. This gives you the power to do in-depth investigative work and take immediate response actions.
Box: 2 : Add a network assessment job
Network assessment jobs allow you to choose network devices to be scanned regularly and added to the device inventory.

NEW QUESTION 151

- (Topic 4)
You have an Azure subscription that contains a user named User1. User1 is assigned an Azure Active Directory Premium Plan 2 license
You need to identify whether the identity of User1 was compromised during the last 90 days.
What should you use?

- A. the risk detections report
- B. the risky users report
- C. Identity Secure Score recommendations
- D. the risky sign-ins report

Answer: B

NEW QUESTION 155

DRAG DROP - (Topic 4)
You have an Azure subscription. The subscription contains 10 virtual machines that are onboarded to Microsoft Defender for Cloud.
You need to ensure that when Defender for Cloud detects digital currency mining behavior on a virtual machine, you receive an email notification. The solution must generate a test email.
Which three actions should you perform in sequence? To answer, move the appropriate actions from the list of actions to the answer area and arrange them in the correct order.

Actions

From Workflow automation in Defender for Cloud, change the status of the workflow automation.

From Logic App Designer, run a trigger.

From Security alerts in Defender for Cloud, create a sample alert.

From Logic App Designer, create a logic app.

From Workflow automation in Defender for Cloud, add a workflow automation.

Answer Area

>

<

- A. Mastered
- B. Not Mastered

Answer: A

Explanation:

Step 1: From Logic App Designer, create a logic app.
Create a logic app and define when it should automatically run
* 1. From Defender for Cloud's sidebar, select Workflow automation.
* 2. To define a new workflow, click Add workflow automation. The options pane for your new automation opens.

Dashboard > Microsoft Defender for Cloud

Microsoft Defender for Cloud | Workflow automation

Showing 73 subscriptions

Search (Ctrl+/) < 2 + Add workflow automation Refresh

General

Filter by name

Name	Status	Scope
DuduTe--	Disabled	ASC DEN
DuduTe--	Disabled	ASC DEN
RonnyTest	Disabled	ASC DEN
rr_reg_c--	Disabled	ASC DEN
test	Disabled	private-b
yoafrTes--	Disabled	ASC DEN
EnabeA--	Enabled	ASC Mult
Encrypt--	Enabled	ASC Mult
KerenN--	Enabled	ASC DEN
KerenSh--	Enabled	ASC DEN
KerenTe--	Enabled	ASC DEN
MorAuto	Enabled	ASC DEN
NewDes--	Enabled	ASC DEN

Add workflow automation

General

Name *

Description

Subscription

ADF Test sub - App Model V2

Resource group *

Trigger conditions

Choose the trigger conditions that will automatically trigger the configured action.

Defender for Cloud data type *

Security alert

Alert name contains

Alert severity *

All severities selected

Actions

Configure the Logic App that will be triggered. Choose an existing Logic App or visit the Logic Apps page to create a new one

Show Logic App instances from the following subscriptions *

73 selected

Logic App name

Select a logic app

Refresh

Create Cancel

Here you can enter:

A name and description for the automation.

The triggers that will initiate this automatic workflow. For example, you might want your Logic App to run when a security alert that contains "SQL" is generated.

The Logic App that will run when your trigger conditions are met.

* 3. From the Actions section, select visit the Logic Apps page to begin the Logic App creation process.

* 4. Etc.

Step 2: From Logic App Designer, run a trigger. Manually trigger a Logic App

You can also run Logic Apps manually when viewing any security alert or recommendation.

Step 3: From Workflow automation in Defender for cloud, add a workflow automation. Configure workflow automation at scale using the supplied policies
Automating your organization's monitoring and incident response processes can greatly improve the time it takes to investigate and mitigate security incidents.

Deploy Workflow Automation for Microsoft Defender for Cloud recommendations

Policy definition

Assign Edit definition Duplicate definition Delete definition Export definition

Essentials

Definition Assignments (0) Parameters

```

1 {
2   "properties": {
3     "displayName": "Deploy Workflow Automation for Microsoft Defender for Cloud recommendations",
4     "policyType": "BuiltIn",
5     "mode": "All",
6     "description": "Enable automation of Microsoft Defender for Cloud recommendations. This policy deploys
7     "metadata": {
8       "version": "1.0.0",
9       "category": "Security Center"
10    },

```

NEW QUESTION 159

- (Topic 4)

You need to ensure that you can run hunting queries to meet the Microsoft Sentinel requirements. Which type of workspace should you create?

- A. Azure Synapse AnarytKS
- B. AzureDalabricks
- C. Azure Machine Learning
- D. LogAnalytics

Answer: D

NEW QUESTION 163

DRAG DROP - (Topic 4)

You have the resources shown in the following table.

Name	Description
SW1	An Azure Sentinel workspace
CEF1	A Linux sever configured to forward Common Event Format (CEF) logs to SW1
Server1	A Linux server configured to send Common Event Format (CEF) logs to CEF1
Server2	A Linux server configured to send Syslog logs to CEF1

You need to prevent duplicate events from occurring in SW1.

What should you use for each action? To answer, drag the appropriate resources to the correct actions. Each resource may be used once, more than once, or not at all. You may need to drag the split bar between panes or scroll to view content.

NOTE: Each correct selection is worth one point.

Resources

Answer Area

SW1	From the Syslog configuration, remove the facilities that send CEF messages.	
CEF1		
Server1	From the Log Analytics agent, disable Syslog synchronization.	
Server2		

- A. Mastered
- B. Not Mastered

Answer: A

Explanation:

Resources

Answer Area

SW1	From the Syslog configuration, remove the facilities that send CEF messages.	Server1
CEF1		
Server1	From the Log Analytics agent, disable Syslog synchronization.	CEF1
Server2		

NEW QUESTION 168

- (Topic 4)

Note: This question is part of a series of questions that present the same scenario. Each question in the series contains a unique solution that might meet the stated goals. Some question sets might have more than one correct solution, while others might not have a correct solution.

After you answer a question in this section, you will NOT be able to return to it. As a result, these questions will not appear in the review screen.

You use Azure Security Center.

You receive a security alert in Security Center.

You need to view recommendations to resolve the alert in Security Center.

Solution: From Security alerts, you select the alert, select Take Action, and then expand the Mitigate the threat section.

Does this meet the goal?

- A. Yes
- B. No

Answer: A

Explanation:

Reference:

<https://docs.microsoft.com/en-us/azure/security-center/security-center-managing-and-responding-alerts>

NEW QUESTION 170

- (Topic 4)

Note: This question is part of a series of questions that present the same scenario. Each question in the series contains a unique solution that might meet the stated goals. Some question sets might have more than one correct solution, while others might not have a correct solution.

After you answer a question in this section, you will NOT be able to return to it. As a result, these questions will not appear in the review screen.

You are configuring Azure Sentinel.

You need to create an incident in Azure Sentinel when a sign-in to an Azure virtual machine from a malicious IP address is detected.

Solution: You create a scheduled query rule for a data connector. Does this meet the goal?

- A. Yes
- B. No

Answer: B

Explanation:

Reference:

<https://docs.microsoft.com/en-us/azure/sentinel/connect-azure-security-center>

NEW QUESTION 173

- (Topic 4)

You need to configure Microsoft Cloud App Security to generate alerts and trigger remediation actions in response to external sharing of confidential files.

Which two actions should you perform in the Cloud App Security portal? Each correct answer presents part of the solution.

NOTE: Each correct selection is worth one point.

- A. From Settings, select Information Protection, select Azure Information Protection, and then select Only scan files for Azure Information Protection classification labels and content inspection warnings from this tenant
- B. Select Investigate files, and then filter App to Office 365.
- C. Select Investigate files, and then select New policy from search
- D. From Settings, select Information Protection, select Azure Information Protection, and then select Automatically scan new files for Azure Information Protection classification labels and content inspection warnings
- E. From Settings, select Information Protection, select Files, and then enable file monitoring.
- F. Select Investigate files, and then filter File Type to Document.

Answer: DE

Explanation:

Reference:

<https://docs.microsoft.com/en-us/cloud-app-security/tutorial-dlp> <https://docs.microsoft.com/en-us/cloud-app-security/azip-integration>

NEW QUESTION 176

- (Topic 4)

You create an Azure subscription.

You enable Microsoft Defender for Cloud for the subscription.

You need to use Defender for Cloud to protect on-premises computers. What should you do on the on-premises computers?

- A. Configure the Hybrid Runbook Worker role.
- B. Install the Connected Machine agent.
- C. Install the Log Analytics agent
- D. Install the Dependency agent.

Answer: C

Explanation:

<https://docs.microsoft.com/en-us/azure/defender-for-cloud/quickstart-onboard-machines?pivots=azure-arc>

NEW QUESTION 179

HOTSPOT - (Topic 4)

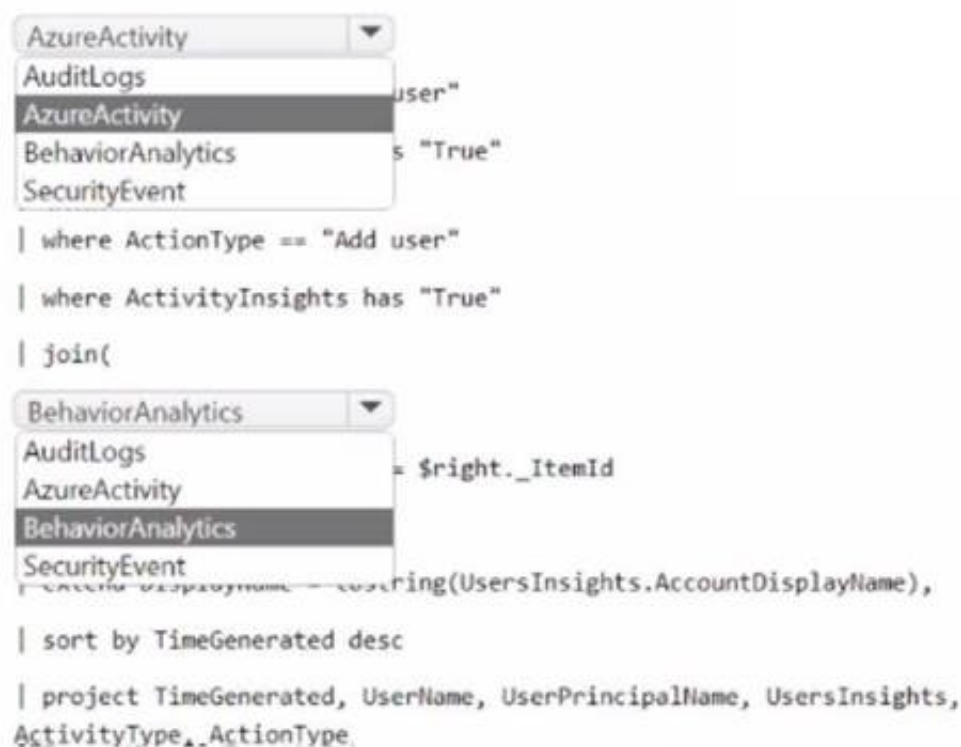
You have a Microsoft Sentinel workspace named sws1.

You need to create a query that will detect when a user creates an unusually large numbers of Azure AD user accounts.

How should you complete the query? To answer, select the appropriate options in the answer area.

NOTE: Each correct selection is worth one point.

Answer Area



- Answer: A**

Explanation:

Answer Area

```

| where ActionType == "Add user"
| where ActivityInsights has "True"
| join(
  BehaviorAnalytics
  = $right._ItemId
  using (UsersInsights.AccountDisplayName),
  sort by TimeGenerated desc
  project TimeGenerated, UserName, UserPrincipalName, UsersInsights,
  ActivityType, ActionType

```

NEW QUESTION 183

DRAG DROP - (Topic 4)

A company wants to analyze by using Microsoft 365 Apps.

You need to describe the connected experiences the company can use.

Which connected experiences should you describe? To answer, drag the appropriate connected experiences to the correct description. Each connected experience may be used once, more than once, or not at all. You may need to drag the split between panes or scroll to view content.

NOTE: Each correct selection is worth one point.

Connected experiences	Answer Area	Connected experience
<div data-bbox="268 1650 554 1659">Editor</div> <div data-bbox="554 1650 804 1659">Tap</div> <div data-bbox="554 1659 804 1668">Similarity checker</div> <div data-bbox="268 1668 554 1676">Friendly intro</div>		<div data-bbox="1026 1650 1497 1659">Description</div> <div data-bbox="1026 1659 1497 1676"> <p>Provides advanced grammar and style refinements such as clarity, conciseness, formality, and vocabulary suggestions.</p> <p>Allows you to use and repurpose existing content from relevant files most often used by coworkers.</p> <p>Identifies how much content in a document is original and inserts citations when necessary.</p> </div>

- A. Mastered
B. Not Mastered

Answer: A

Explanation:

The diagram illustrates the relationship between three components: **Connected experiences**, **Answer Area**, and **Description**.

- Connected experiences** (left): A vertical list of three items: **Editor**, **Tap**, and **Similarity checker**. Each item is enclosed in a dashed green box.
- Answer Area** (center): A vertical list of three items: **Editor**, **Tap**, and **Similarity checker**. Each item is enclosed in a dashed red box.
- Description** (right): A vertical list of three items: **Provides advanced grammar and style refinements such as clarity, conciseness, formality, and vocabulary suggestions.**, **Allows you to use and repurpose existing content from relevant files most often used by coworkers.**, and **Identifies how much content in a document is original and inserts citations when necessary.** Each item is enclosed in a dashed red box.

Arrows indicate the flow of information from the **Connected experiences** to the **Answer Area** and from the **Answer Area** to the **Description**.

NEW QUESTION 188

HOTSPOT - (Topic 4)

You need to assign role-based access control (RBAQ roles to Group1 and Group2 to meet The Microsoft Defender for Cloud requirements and the business requirements Which role should you assign to each group? To answer, select the appropriate options in the answer area NOTE Each correct selection is worth one point.

Answer Area



- A. Mastered
- B. Not Mastered

Answer: A

Explanation:

Answer Area



NEW QUESTION 193

- (Topic 4)

You provision a Linux virtual machine in a new Azure subscription.

You enable Azure Defender and onboard the virtual machine to Azure Defender.

You need to verify that an attack on the virtual machine triggers an alert in Azure Defender. Which two Bash commands should you run on the virtual machine?

Each correct answer

presents part of the solution.

NOTE: Each correct selection is worth one point.

- A. `cp /bin/echo ./asc_alerptest_662jfi039n`
- B. `./alerptest testing eicar pipe`
- C. `cp /bin/echo ./alerptest`
- D. `./asc_alerptest_662jfi039n testing eicar pipe`

Answer: AD

Explanation:

Reference:

<https://docs.microsoft.com/en-us/azure/security-center/security-center-alert-validation#simulate-alerts-on-your-azure-vms-linux->

NEW QUESTION 198

- (Topic 4)

You have an Azure subscription that uses Microsoft Defender for Servers Plan 1 and contains a server named Server1.

You enable agentless scanning.

You need to prevent Server1 from being scanned. The solution must minimize administrative effort.

What should you do?

- A. Create an exclusion tag.
- B. Upgrade the subscription to Defender for Servers Plan 2.
- C. Create a governance rule.
- D. Create an exclusion group.

Answer: D

NEW QUESTION 203

HOTSPOT - (Topic 4)

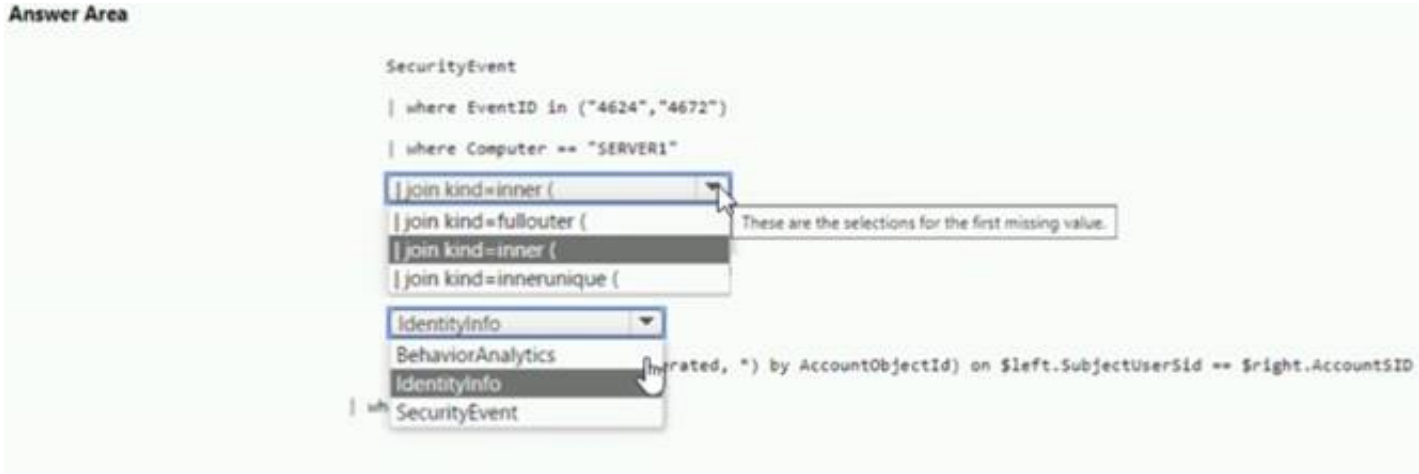
You have a Microsoft Sentinel workspace that has User and Entity Behavior Analytics (UEBA) enabled.

You need to identify all the log entries that relate to security-sensitive user actions performed on a server named Server1. The solution must meet the following requirements:

- Only include security-sensitive actions by users that are NOT members of the IT department.
- Minimize the number of false positives.

How should you complete the query? To answer, select the appropriate options in the answer area. NOTE: Each correct selection is worth one point.

Answer Area

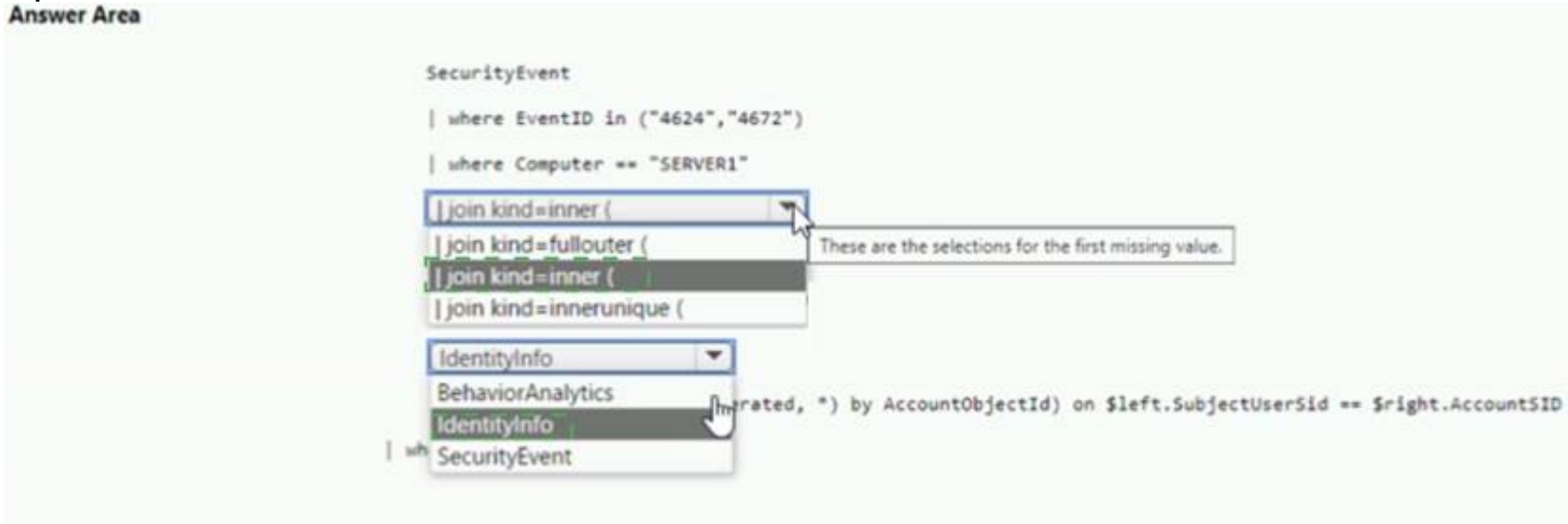


- A. Mastered
- B. Not Mastered

Answer: A

Explanation:

Answer Area



NEW QUESTION 204

- (Topic 4)
You have an Azure subscription that contains a Log Analytics workspace.
You need to enable just-in-time (JIT) VM access and network detections for Azure resources.
Where should you enable Azure Defender?

- A. at the subscription level
- B. at the workspace level
- C. at the resource level

Answer: A

Explanation:

Reference:
<https://docs.microsoft.com/en-us/azure/security-center/enable-azure-defender>

NEW QUESTION 207

- (Topic 4)
You need to deploy the native cloud connector to Account! to meet the Microsoft Defender for Cloud requirements. What should you do in Account! first?

- A. Create an AWS user for Defender for Cloud.
- B. Create an Access control (IAM) role for Defender for Cloud.
- C. Configure AWS Security Hub.
- D. Deploy the AWS Systems Manager (SSM) agent

Answer: D

NEW QUESTION 212

HOTSPOT - (Topic 4)
You have the following KQL query.

```
let IPList = _GetWatchlist('Bad_IPs');
Event
| where Source == "Microsoft-Windows-Sysmon"
| where EventID == 3
| extend EvData = parse_xml(EventData)
| extend EventDetail = EvData.DataItem.EventData.Data
| extend SourceIP = EventDetail.[9].["#text"], DestinationIP = EventDetail.[14].["#text"]
| where SourceIP in (IPList) or DestinationIP in (IPList)
| extend IPMatch = case( SourceIP in (IPList), "SourceIP", DestinationIP in (IPList), "DestinationIP", "None")
| extend timestamp = TimeGenerated, AccountCustomEntity = Username, HostCustomEntity = Computer, '
```

Statements

Yes

No

The **Username** field is set as the account entity.

☐☐

The watchlist cannot be updated after it is created.

☐☐

The **IPList** variable is set as the **IP** address entity.

☐☐

- A. Mastered
B. Not Mastered

Answer: A

Explanation:

Statements

Yes

No

The **Username** field is set as the account entity.

☒☐

The watchlist cannot be updated after it is created.

☒☐

The **IPList** variable is set as the **IP** address entity.

☐☒

NEW QUESTION 214

- (Topic 4)

You are configuring Azure Sentinel.

You need to send a Microsoft Teams message to a channel whenever a sign-in from a suspicious IP address is detected.

Which two actions should you perform in Azure Sentinel? Each correct answer presents part of the solution.

NOTE: Each correct selection is worth one point.

- A. Add a playbook.
B. Associate a playbook to an incident.
C. Enable Entity behavior analytics.
D. Create a workbook.
E. Enable the Fusion rule.

Answer: AB

Explanation:

Reference:

<https://docs.microsoft.com/en-us/azure/sentinel/tutorial-respond-threats-playbook>

NEW QUESTION 218

- (Topic 4)

You have five on-premises Linux servers.

You have an Azure subscription that uses Microsoft Defender for Cloud. You need to use Defender for Cloud to protect the Linux servers.

What should you install on the servers first?

- A. the Dependency agent
B. the Log Analytics agent
C. the Azure Connected Machine agent
D. the Guest Configuration extension

Answer: B

Explanation:

Defender for Cloud depends on the Log Analytics agent. Use the Log Analytics agent if you need to:

* Collect logs and performance data from Azure virtual machines or hybrid machines hosted outside of Azure
* Etc.

Reference:

<https://docs.microsoft.com/en-us/azure/defender-for-cloud/os-coverage> <https://docs.microsoft.com/en-us/azure/azure-monitor/agents/agents-overview#log-analytics-agent>

NEW QUESTION 223

HOTSPOT - (Topic 4)

Your network contains an on-premises Active Directory Domain Services (AD DS) domain that syncs with Azure AD.

You have a Microsoft 365 E5 subscription that uses Microsoft Defender 365.

You need to identify all the interactive authentication attempts by the users in the finance department of your company.

How should you complete the KQL query? To answer, select the appropriate options in the answer area.

NOTE: Each correct selection is worth one point.

Answer Area

IdentityQueryEvents
BehaviorAnalytics
IdentityInfo
IdentityQueryEvents

| where Department == 'Finance'

| project-rename objid = AccountObjectId

| join AuditLogs on \$left.objid == \$right.AccountObjectId
AuditLogs
IdentityLogonEvents
SigninLogs

- A. Mastered
- B. Not Mastered

Answer: A

Explanation:

Answer Area

IdentityQueryEvents
BehaviorAnalytics
IdentityInfo
IdentityQueryEvents

| where Department == 'Finance'

| project-rename objid = AccountObjectId

| join AuditLogs on \$left.objid == \$right.AccountObjectId
AuditLogs
IdentityLogonEvents
SigninLogs

NEW QUESTION 228

DRAG DROP - (Topic 4)

You are investigating an incident by using Microsoft 365 Defender.

You need to create an advanced hunting query to count failed sign-in authentications on three devices named CFOLaptop, CEOLaptop, and COOLaptop.

How should you complete the query? To answer, select the appropriate options in the answer area.

NOTE Each correct selection is worth one point

Values

Answer Area

project LogonFailures=count()
summarize LogonFailures=count() by DeviceName, LogonType
where ActionType == FailureReason
where DeviceName in ("CFOLaptop", "CEOLaptop", "COOLaptop")
ActionType == "LogonFailed"
ActionType == FailureReason
DeviceEvents
DeviceLogonEvents

	and

- A. Mastered
B. Not Mastered

Answer: A

Explanation:

Values

Answer Area

project LogonFailures=count()
summarize LogonFailures=count() by DeviceName, LogonType
where ActionType == FailureReason
where DeviceName in ("CFOLaptop", "CEOLaptop", "COOLaptop")
ActionType == "LogonFailed"
ActionType == FailureReason
DeviceEvents
DeviceLogonEvents

DeviceLogonEvents	
where DeviceName in ("CFOLaptop", "CEOLaptop", "COOLaptop")	and
ActionType == FailureReason	
summarize LogonFailures=count() by DeviceName, LogonType	

NEW QUESTION 230

DRAG DROP - (Topic 4)

You have an Azure subscription linked to an Azure Active Directory (Azure AD) tenant. The tenant contains two users named User1 and User2.

You plan to deploy Azure Defender.

You need to enable User1 and User2 to perform tasks at the subscription level as shown in the following table.

User	Task
User1	<ul style="list-style-type: none"> Assign initiatives Edit security policies Enable automatic provisioning
User2	<ul style="list-style-type: none"> View alerts and recommendations Apply security recommendations Dismiss alerts

The solution must use the principle of least privilege.

Which role should you assign to each user? To answer, drag the appropriate roles to the correct users. Each role may be used once, more than once, or not at all.

You may need to drag the split bar between panes or scroll to view content.

Roles	Answer Area
Contributor	User1:
Owner	User2:
Security administrator	
Security reader	

- A. Mastered
- B. Not Mastered

Answer: A

Explanation:

Box 1: Owner

Only the Owner can assign initiatives.

Box 2: Contributor

Only the Contributor or the Owner can apply security recommendations.

NEW QUESTION 232

- (Topic 4)

You have a suppression rule in Azure Security Center for 10 virtual machines that are used for testing. The virtual machines run Windows Server.

You are troubleshooting an issue on the virtual machines.

In Security Center, you need to view the alerts generated by the virtual machines during the last five days.

What should you do?

- A. Change the rule expiration date of the suppression rule.
- B. Change the state of the suppression rule to Disabled.
- C. Modify the filter for the Security alerts page.
- D. View the Windows event logs on the virtual machines.

Answer: B

Explanation:

Reference:

<https://docs.microsoft.com/en-us/azure/security-center/alerts-suppression-rules>

NEW QUESTION 233

- (Topic 4)

Your company stores the data for every project in a different Azure subscription. All the subscriptions use the same Azure Active Directory (Azure AD) tenant.

Every project consists of multiple Azure virtual machines that run Windows Server. The Windows events of the virtual machines are stored in a Log Analytics workspace in each machine's respective subscription.

You deploy Azure Sentinel to a new Azure subscription.

You need to perform hunting queries in Azure Sentinel to search across all the Log Analytics workspaces of all the subscriptions.

Which two actions should you perform? Each correct answer presents part of the solution. NOTE: Each correct selection is worth one point.

- A. Add the Security Events connector to the Azure Sentinel workspace.
- B. Create a query that uses the workspace expression and the union operator.
- C. Use the alias statement.
- D. Create a query that uses the resource expression and the alias operator.
- E. Add the Azure Sentinel solution to each workspace.

Answer: BE

Explanation:

Reference:

<https://docs.microsoft.com/en-us/azure/sentinel/extend-sentinel-across-workspaces-tenants>

NEW QUESTION 235

DRAG DROP - (Topic 4)

You plan to connect an external solution that will send Common Event Format (CEF) messages to Azure Sentinel.

You need to deploy the log forwarder.

Which three actions should you perform in sequence? To answer, move the appropriate actions from the list of actions to the answer area and arrange them in the correct order.

Actions	Answer Area
Deploy an OMS Gateway on the network.	
Set the syslog daemon to forward the events directly to Azure Sentinel.	
Configure the syslog daemon. Restart the syslog daemon and the Log Analytics agent.	⬅️ ⬆️
Download and install the Log Analytics agent.	⬆️
Set the Log Analytics agent to listen on port 25226 and forward the CEF messages to Azure Sentinel.	

- A. Mastered
B. Not Mastered

Answer: A

Explanation:

Actions	Answer Area
Deploy an OMS Gateway on the network.	Download and install the Log Analytics agent.
Set the syslog daemon to forward the events directly to Azure Sentinel.	Set the Log Analytics agent to listen on port 25226 and forward the CEF messages to Azure Sentinel.
Configure the syslog daemon. Restart the syslog daemon and the Log Analytics agent.	⬅️ ⬆️
Download and install the Log Analytics agent.	⬆️
Set the Log Analytics agent to listen on port 25226 and forward the CEF messages to Azure Sentinel.	

NEW QUESTION 238

HOTSPOT - (Topic 4)

You purchase a Microsoft 365 subscription.

You plan to configure Microsoft Cloud App Security.

You need to create a custom template-based policy that detects connections to Microsoft 365 apps that originate from a botnet network.

What should you use? To answer, select the appropriate options in the answer area.

NOTE: Each correct selection is worth one point.

Policy template type:

	▼
Access policy	
Activity policy	
Anomaly detection policy	

Filter based on:

	▼
IP address tag	
Source	
User agent string	

- A. Mastered
B. Not Mastered

Answer: A

Explanation:

Policy template type:

Access policy

Activity policy

Anomaly detection policy

Filter based on:

IP address tag

Source

User agent string

NEW QUESTION 240

HOTSPOT - (Topic 4)

You have an Azure subscription that uses Microsoft Defender for Cloud. You create a Google Cloud Platform (GCP) organization named GCP1. You need to onboard GCP1 to Defender for Cloud by using the native cloud connector. The solution must ensure that all future GCP projects are onboarded automatically. What should you include in the solution? To answer, select the appropriate options in the answer area. NOTE: Each correct selection is worth one point.

Answer Area

Create:

A management project and a custom role

A management group and an Azure AD service principal

A management project and a custom role

An Azure AD administrative unit and a managed identity

By:

Running a script in GCP Cloud Shell

Deploying a Bicep template

Running a script in Azure Cloud Shell

Running a script in GCP Cloud Shell

- A. Mastered
- B. Not Mastered

Answer: A

Explanation:

Answer Area

Create:

A management project and a custom role

A management group and an Azure AD service principal

A management project and a custom role

An Azure AD administrative unit and a managed identity

By:

Running a script in GCP Cloud Shell

Deploying a Bicep template

Running a script in Azure Cloud Shell

Running a script in GCP Cloud Shell

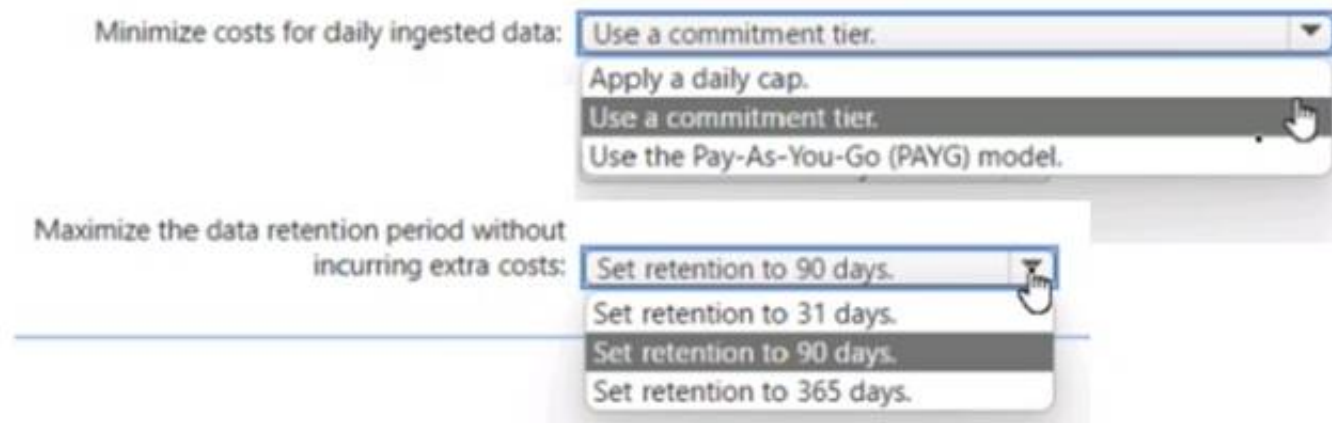
NEW QUESTION 241

HOTSPOT - (Topic 4)

You have an Azure subscription. You plan to implement an Microsoft Sentinel workspace. You anticipate that you will ingest 20 GB of security log data per day. You need to configure storage for the workspace. The solution must meet the following requirements:

- Minimize costs for daily ingested data.
- Maximize the data retention period without incurring extra costs.

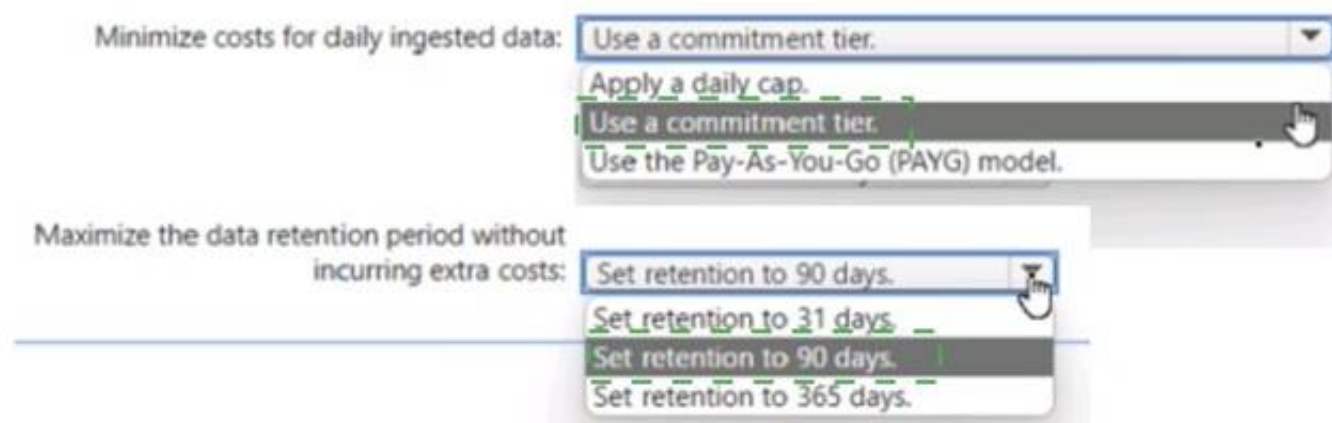
What should you do for each requirement? To answer, select the appropriate options in the answer area. NOTE Each correct selection is worth one point.



- A. Mastered
- B. Not Mastered

Answer: A

Explanation:



NEW QUESTION 244

- (Topic 4)

You have a playbook in Azure Sentinel.

When you trigger the playbook, it sends an email to a distribution group.

You need to modify the playbook to send the email to the owner of the resource instead of the distribution group.

What should you do?

- A. Add a parameter and modify the trigger.
- B. Add a custom data connector and modify the trigger.
- C. Add a condition and modify the action.
- D. Add a parameter and modify the action.

Answer: D

Explanation:

Reference:

<https://azsec.azurewebsites.net/2020/01/19/notify-azure-sentinel-alert-to-your-email- automatically/>

NEW QUESTION 246

- (Topic 4)

You are configuring Azure Sentinel.

You need to send a Microsoft Teams message to a channel whenever an incident representing a sign-in risk event is activated in Azure Sentinel.

Which two actions should you perform in Azure Sentinel? Each correct answer presents part of the solution.

NOTE: Each correct selection is worth one point.

- A. Enable Entity behavior analytics.
- B. Associate a playbook to the analytics rule that triggered the incident.
- C. Enable the Fusion rule.
- D. Add a playbook.
- E. Create a workbook.

Answer: AB

Explanation:

Reference:

<https://docs.microsoft.com/en-us/azure/sentinel/enable-entity-behavior-analytics> <https://docs.microsoft.com/en-us/azure/sentinel/automate-responses-with-playbooks>

NEW QUESTION 248

- (Topic 4)

You have the following advanced hunting query in Microsoft 365 Defender.


```
DeviceProcessEvents
| where Timestamp > ago (24h)
and InitiatingProcessFileName =~ 'runsl132.exe'
and InitiatingProcessCommandLine !contains " " and InitiatingProcessCommandLine != ""
and FileName in~ ('schtasks.exe')
and ProcessCommandLine has 'Change' and ProcessCommandLine has 'SystemRestore'
and ProcessCommandLine has 'disable'
| project Timestamp, AccountName, ProcessCommandLine
```

You need to receive an alert when any process disables System Restore on a device managed by Microsoft Defender during the last 24 hours. Which two actions should you perform? Each correct answer presents part of the solution. NOTE: Each correct selection is worth one point.

- A. Create a detection rule.
- B. Create a suppression rule.
- C. Add | order by Timestamp to the query.
- D. Block DeviceProcessEvents with DeviceNetworkEvents.
- E. Add DeviceId and ReportId to the output of the query.

Answer: AE

Explanation:

Reference:

<https://docs.microsoft.com/en-us/windows/security/threat-protection/microsoft-defender-atp/custom-detection-rules>

NEW QUESTION 250

- (Topic 4)

You have an Azure subscription that uses Microsoft Sentinel and contains 100 Linux virtual machines.

You need to monitor the virtual machines by using Microsoft Sentinel. The solution must meet the following requirements:

- Minimize administrative effort
 - Minimize the parsing required to read log data
- What should you configure?

- A. REST API integration
- B. a SysJog connector
- C. a Log Analytics Data Collector API
- D. a Common Event Format (CEF) connector

Answer: B

NEW QUESTION 253

HOTSPOT - (Topic 4)

From Azure Sentinel, you open the Investigation pane for a high-severity incident as shown in the following exhibit.



Use the drop-down menus to select the answer choice that completes each statement based on the information presented in the graphic. NOTE: Each correct selection is worth one point.

If you hover over the virtual machine named vm1, you can view [answer choice].

	▼
the inbound network security group (NSG) rules	
the last five Windows security log events	
the open ports on the host	
the running processes	

If you select [answer choice], you can navigate to the bookmarks related to the incident.

	▼
Entities	
Info	
Insights	
Timeline	

- A. Mastered
- B. Not Mastered

Answer: A

Explanation:

If you hover over the virtual machine named vm1, you can view [answer choice].

	▼
the inbound network security group (NSG) rules	
the last five Windows security log events	
the open ports on the host	
the running processes	

If you select [answer choice], you can navigate to the bookmarks related to the incident.

	▼
Entities	
Info	
Insights	
Timeline	

NEW QUESTION 255

- (Topic 4)

You are configuring Microsoft Cloud App Security.

You have a custom threat detection policy based on the IP address ranges of your company's United States-based offices.

You receive many alerts related to impossible travel and sign-ins from risky IP addresses. You determine that 99% of the alerts are legitimate sign-ins from your corporate offices. You need to prevent alerts for legitimate sign-ins from known locations.

Which two actions should you perform? Each correct answer presents part of the solution.

NOTE: Each correct selection is worth one point.

- A. Override automatic data enrichment.
- B. Add the IP addresses to the corporate address range category.
- C. Increase the sensitivity level of the impossible travel anomaly detection policy.
- D. Add the IP addresses to the other address range category and add a tag.
- E. Create an activity policy that has an exclusion for the IP addresses.

Answer: AD

NEW QUESTION 259

- (Topic 4)

You have a Microsoft Sentinel workspace named workspace1 that contains custom Kusto queries.

You need to create a Python-based Jupyter notebook that will create visuals. The visuals will display the results of the queries and be pinned to a dashboard. The solution must minimize development effort.

What should you use to create the visuals?

- A. plotly
- B. TensorFlow
- C. msticpy
- D. matplotlib

Answer: C

Explanation:

msticpy is a library for InfoSec investigation and hunting in Jupyter Notebooks. It includes functionality to: query log data from multiple sources. enrich the data with Threat Intelligence, geolocations and Azure resource data. extract Indicators of Activity (IoA) from logs and unpack encoded data.

MSTICPy reduces the amount of code that customers need to write for Microsoft Sentinel, and provides:

Data query capabilities, against Microsoft Sentinel tables, Microsoft Defender for Endpoint, Splunk, and other data sources.

Threat intelligence lookups with TI providers, such as VirusTotal and AlienVault OTX. Enrichment functions like geolocation of IP addresses, Indicator of Compromise (IoC) extraction, and WhoIs lookups.

Visualization tools using event timelines, process trees, and geo mapping.

Advanced analyses, such as time series decomposition, anomaly detection, and clustering.

Reference:

<https://docs.microsoft.com/en-us/azure/sentinel/notebook-get-started> <https://msticpy.readthedocs.io/en/latest/>

NEW QUESTION 260

- (Topic 4)

Note: This question is part of a series of questions that present the same scenario. Each question in the series contains a unique solution that might meet the stated goals. Some question sets might have more than one correct solution, while others might not have a correct solution.

After you answer a question in this section, you will NOT be able to return to it. As a result, these questions will not appear in the review screen.

You are configuring Microsoft Defender for Identity integration with Active Directory.

From the Microsoft Defender for identity portal, you need to configure several accounts for attackers to exploit.

Solution: From Azure Identity Protection, you configure the sign-in risk policy. Does this meet the goal?

A. Yes

B. No

Answer: B

Explanation:

Reference:

<https://docs.microsoft.com/en-us/defender-for-identity/manage-sensitive-honeytoken-accounts>

NEW QUESTION 263

- (Topic 4)

Note: This question is part of a series of questions that present the same scenario. Each question in the series contains a unique solution that might meet the stated goals. Some question sets might have more than one correct solution, while others might not have a correct solution.

After you answer a question in this section, you will NOT be able to return to it. As a result, these questions will not appear in the review screen.

You use Azure Security Center.

You receive a security alert in Security Center.

You need to view recommendations to resolve the alert in Security Center. Solution: From Regulatory compliance, you download the report.

Does this meet the goal?

A. Yes

B. No

Answer: B

Explanation:

Reference:

<https://docs.microsoft.com/en-us/azure/security-center/security-center-managing-and-responding-alerts>

NEW QUESTION 268

- (Topic 4)

You use Azure Defender.

You have an Azure Storage account that contains sensitive information.

You need to run a PowerShell script if someone accesses the storage account from a suspicious IP address.

Which two actions should you perform? Each correct answer presents part of the solution.

NOTE: Each correct selection is worth one point.

A. From Azure Security Center, enable workflow automation.

B. Create an Azure logic app that has a manual trigger

C. Create an Azure logic app that has an Azure Security Center alert trigger.

D. Create an Azure logic app that has an HTTP trigger.

E. From Azure Active Directory (Azure AD), add an app registration.

Answer: AC

Explanation:

Reference:

<https://docs.microsoft.com/en-us/azure/storage/common/azure-defender-storage-configure?tabs=azure-security-center>

<https://docs.microsoft.com/en-us/azure/security-center/workflow-automation>

NEW QUESTION 270

- (Topic 4)

You have a Microsoft Sentinel playbook that is triggered by using the Azure Activity connector.

You need to create a new near-real-time (NRT) analytics rule that will use the playbook. What should you configure for the rule?

A. the Incident automation settings

B. entity mapping

C. the query rule

D. the Alert automation settings

Answer: B

NEW QUESTION 271

- (Topic 4)

A company uses Azure Sentinel.

You need to create an automated threat response. What should you use?

A. a data connector

- B. a playbook
- C. a workbook
- D. a Microsoft incident creation rule

Answer: B

Explanation:

Reference:
<https://docs.microsoft.com/en-us/azure/sentinel/tutorial-respond-threats-playbook>

NEW QUESTION 272

DRAG DROP - (Topic 4)

You have a Microsoft Sentinel workspace named workspace1 and an Azure virtual machine named VM1.
You receive an alert for suspicious use of PowerShell on VM1.
You need to investigate the incident, identify which event triggered the alert, and identify whether the following actions occurred on VM1 after the alert:
? The modification of local group memberships
? The purging of event logs
Which three actions should you perform in sequence in the Azure portal? To answer, move the appropriate actions from the list of actions to the answer area and arrange them in the correct order.

Actions

From the details pane of the incident, select **Investigate**.

From the investigation blade, select the entity that represents VM1.

From the investigation blade, select the entity that represents powershell.exe.

From the investigation blade, select **Timeline**.

From the investigation blade, select **Info**.

From the investigation blade, select **Insights**.

Answer Area

- A. Mastered
- B. Not Mastered

Answer: A

Explanation:

Step 1: From the Investigation blade, select Insights
The Investigation Insights Workbook is designed to assist in investigations of Azure Sentinel Incidents or individual IP/Account/Host/URL entities.
Step 2: From the Investigation blade, select the entity that represents VM1.
The Investigation Insights workbook is broken up into 2 main sections, Incident Insights and Entity Insights.
Incident Insights
The Incident Insights gives the analyst a view of ongoing Sentinel Incidents and allows for quick access to their associated metadata including alerts and entity information.
Entity Insights
The Entity Insights allows the analyst to take entity data either from an incident or through manual entry and explore related information about that entity. This workbook presently provides view of the following entity types:
IP Address Account Host
URL
Step 3: From the details pane of the incident, select Investigate. Choose a single incident and click View full details or Investigate.

NEW QUESTION 275

DRAG DROP - (Topic 4)

You have a Microsoft Sentinel workspace that contains an Azure AD data connector. You need to associate a bookmark with an Azure AD-related incident.
What should you do? To answer, drag the appropriate blades to the correct tasks. Each blade may be used once, more than once, or not at all. You may need to drag the split bar between panes or scroll to view content
NOTE: Each correct selection is worth one point.

Blades

Hunting blade

Incident blade

Logs blade

Answer Area

Create a bookmark by using the: Blade

Associate a bookmark with the incident by using the: Blade

- A. Mastered
- B. Not Mastered

Answer: A

Explanation:

You can use the Logs blade or incident blade to create a bookmark of an Azure AD-related incident. Once the bookmark is created, you can associate it with the incident by using the incident blade. This allows you to quickly and easily access important information related to the incident in the future.

NEW QUESTION 280

- (Topic 4)

You have an Azure subscription that uses Microsoft Sentinel.
You need to create a custom report that will visualise sign-in information over time.
What should you create first?

- A. a workbook

- B. a hunting query
- C. a notebook
- D. a playbook

Answer: A

Explanation:

A workbook is a data-driven interactive report in Microsoft Sentinel. You can use workbooks to create custom reports based on data from your Azure subscription.
Reference: <https://docs.microsoft.com/en-us/azure/sentinel/workbooks-overview>

NEW QUESTION 284

HOTSPOT - (Topic 4)

You have an Azure subscription that uses Azure Defender.

You plan to use Azure Security Center workflow automation to respond to Azure Defender threat alerts.

You need to create an Azure policy that will perform threat remediation automatically. What should you include in the solution? To answer, select the appropriate options in the answer area.

NOTE: Each correct selection is worth one point.

Set available effects to:

	▼
Append	
DeployIfNotExists	
EnforceRegoPolicy	

To perform remediation use:

	▼
An Azure Automation runbook that has a webhook	
An Azure Logic Apps app that has the trigger set to When an Azure Security Center Alert is created or triggered	
An Azure Logic Apps app that has the trigger set to When a response to an Azure Security Center alert is triggered	

- A. Mastered
- B. Not Mastered

Answer: A

Explanation:

Set available effects to:

	▼
Append	
DeployIfNotExists	
EnforceRegoPolicy	

To perform remediation use:

	▼
An Azure Automation runbook that has a webhook	
An Azure Logic Apps app that has the trigger set to When an Azure Security Center Alert is created or triggered	
An Azure Logic Apps app that has the trigger set to When a response to an Azure Security Center alert is triggered	

NEW QUESTION 288

- (Topic 4)

You use Azure Security Center.

You receive a security alert in Security Center.

You need to view recommendations to resolve the alert in Security Center. What should you do?

- A. From Security alerts, select the alert, select Take Action, and then expand the Prevent future attacks section.
- B. From Security alerts, select Take Action, and then expand the Mitigate the threat section.
- C. From Regulatory compliance, download the report.
- D. From Recommendations, download the CSV report.

Answer: B

Explanation:

Reference:

<https://docs.microsoft.com/en-us/azure/security-center/security-center-managing-and-responding-alerts>

NEW QUESTION 290

DRAG DROP - (Topic 4)

You have a Microsoft 365 E5 subscription that uses Microsoft Exchange Online. You need to identify phishing email messages.

Which three cmdlets should you run in sequence? To answer, move the appropriate cmdlets from the list of cmdlets to the answer area and arrange them in the correct order.

Cmdlets

Connect-IPSSession

Start-ComplianceSearch

New-ComplianceSearch

Connect-ExchangeOnline

Search-UnifiedAuditLog

Answer Area

- A. Mastered
- B. Not Mastered

Answer: A

Explanation:

Cmdlets

Connect-IPSSession

Start-ComplianceSearch

New-ComplianceSearch

Connect-ExchangeOnline

Search-UnifiedAuditLog

Answer Area

New-ComplianceSearch

Connect-ExchangeOnline

Search-UnifiedAuditLog

NEW QUESTION 293

HOTSPOT - (Topic 4)

You use Azure Sentinel to monitor irregular Azure activity.

You create custom analytics rules to detect threats as shown in the following exhibit.

[Home](#) > [Azure Sentinel workspaces](#) > [Azure Sentinel](#)

Analytics rule wizard – Edit existing rule

DeployVM

[General](#) [Set rule logic](#) [Incident settings](#) [Automated response](#) [Review and create](#)

Define the logic for your new analytics rule.

Rule query

Any time details set here will be within the scope defined below in the Query scheduling fields.

```
AzureActivity
| where OperationName == "Create or Update Virtual Machine"
or OperationName == "Create Deployment"
| where ActivityStatus == "Succeeded"
| make-series dcount(ResourceId) default=0
on EventSubmissionTimestamp in range(ago(7d), now(), 1d) by Caller
```

[View query results >](#)

Map entities

Map the entities recognized by Azure Sentinel to the appropriate columns available in your query results. This enables Azure Sentinel to recognize the entities that are part of the alerts for further analysis. Entity type must be a string.

Entity Type	Column
Account	<div>Choose column ▼ Add</div>
Host	<div>Choose column ▼ Add</div>
IP	<div>Choose column ▼ Add</div>
URL	<div>Choose column ▼ Add</div>
FileHash	<div>Choose column ▼ Add</div>

Query scheduling

Run query every *

✓

Minutes ▼

Lookup data from the last * ⓘ

Hours ▼

Alert threshold

Generate alert when number of query results

Is greater than ▼

✓

Event grouping

Configure how rule query results are grouped into alerts

- ☒ Group all events into a single alert
- ☐ Trigger an alert for each event

Suppression

Stop running query after alert is generated ⓘ

On Off

Stop running query for *

✓

Hours ▼

[Previous](#)

[Next : Incident settings >](#)

You do NOT define any incident settings as part of the rule definition.

Use the drop-down menus to select the answer choice that completes each statement based on the information presented in the graphic.

NOTE: Each correct selection is worth one point.

If a user deploys three Azure virtual machines simultaneously, how many times will you receive **[answer choice]** in the next five hours.

▼

0 alerts

1 alert

2 alerts

3 alerts

If three separate users deploy one Azure virtual machine each within five minutes of each other, you will receive **[answer choice]**.

▼

0 alerts

1 alert

2 alerts

3 alerts

- A. Mastered
- B. Not Mastered

Answer: A

Explanation:

Graphical user interface, text, application, email Description automatically generated

NEW QUESTION 294

- (Topic 4)

You are investigating a potential attack that deploys a new ransomware strain.

You plan to perform automated actions on a group of highly valuable machines that contain sensitive information.

You have three custom device groups.

You need to be able to temporarily group the machines to perform actions on the devices. Which three actions should you perform? Each correct answer presents part of the solution. NOTE: Each correct selection is worth one point.

- A. Add a tag to the device group.
- B. Add the device users to the admin role.
- C. Add a tag to the machines.
- D. Create a new device group that has a rank of 1.
- E. Create a new admin role.
- F. Create a new device group that has a rank of 4.

Answer: ACD

Explanation:

<https://docs.microsoft.com/en-us/learn/modules/deploy-microsoft-defender-for-endpoints-environment/4-manage-access>

NEW QUESTION 298

- (Topic 4)

You have a Microsoft 365 E5 subscription that uses Microsoft Defender for Endpoint

You need to identify any devices that triggered a malware alert and collect evidence related to the alert. The solution must ensure that you can use the results to initiate device isolation for the affected devices.

What should you use in the Microsoft 365 Defender portal?

- A. Incidents
- B. Investigations
- C. Advanced hunting
- D. Remediation

Answer: A

NEW QUESTION 302

- (Topic 4)

You have a Microsoft 365 subscription that uses Azure Defender. You have 100 virtual machines in a resource group named RG1.

You assign the Security Admin roles to a new user named SecAdmin1.

You need to ensure that SecAdmin1 can apply quick fixes to the virtual machines by using Azure Defender. The solution must use the principle of least privilege. Which role should you assign to SecAdmin1?

- A. the Security Reader role for the subscription
- B. the Contributor for the subscription
- C. the Contributor role for RG1
- D. the Owner role for RG1

Answer: C

NEW QUESTION 305

- (Topic 4)

You have a third-party security information and event management (SIEM) solution.

You need to ensure that the SIEM solution can generate alerts for Azure Active Directory (Azure AD) sign-events in near real time.

What should you do to route events to the SIEM solution?

- A. Create an Azure Sentinel workspace that has a Security Events connector.
- B. Configure the Diagnostics settings in Azure AD to stream to an event hub.
- C. Create an Azure Sentinel workspace that has an Azure Active Directory connector.
- D. Configure the Diagnostics settings in Azure AD to archive to a storage account.

Answer: B

Explanation:

Reference:

<https://docs.microsoft.com/en-us/azure/active-directory/reports-monitoring/overview-monitoring>

NEW QUESTION 310

HOTSPOT - (Topic 4)

You are informed of an increase in malicious email being received by users.

You need to create an advanced hunting query in Microsoft 365 Defender to identify whether the accounts of the email recipients were compromised. The query must return the most recent 20 sign-ins performed by the recipients within an hour of receiving the known malicious email.

How should you complete the query? To answer, select the appropriate options in the answer area.

NOTE: Each correct selection is worth one point.

```
let MaliciousEmails =  
    | where MalwareFilterVerdict == "Malware"  
    | project TimeEmail = Timestamp, Subject, SenderFromAddress, AccountName =  
        toString(split (RecipientEmailAddress, "@") [0]);  
  
MaliciousEmails  
| join (  
    | project LogonTime = Timestamp, AccountName, DeviceName  
    ) on AccountName  
| where (LogonTime - TimeEmail) between (0min.. 60min)  
|  
    select 20  
    take 20  
    top 20
```

- A. Mastered
- B. Not Mastered

Answer: A

Explanation:

```
let MaliciousEmails =  
    | where MalwareFilterVerdict == "Malware"  
    | project TimeEmail = Timestamp, Subject, SenderFromAddress, AccountName =  
        toString(split (RecipientEmailAddress, "@") [0]);  
  
MaliciousEmails  
| join (  
    | project LogonTime = Timestamp, AccountName, DeviceName  
    ) on AccountName  
| where (LogonTime - TimeEmail) between (0min.. 60min)  
|  
    select 20  
    take 20  
    top 20
```

NEW QUESTION 311

.....

Thank You for Trying Our Product

* 100% Pass or Money Back

All our products come with a 90-day Money Back Guarantee.

* One year free update

You can enjoy free update one year. 24x7 online support.

* Trusted by Millions

We currently serve more than 30,000,000 customers.

* Shop Securely

All transactions are protected by VeriSign!

100% Pass Your SC-200 Exam with Our Prep Materials Via below:

<https://www.certleader.com/SC-200-dumps.html>