

# Cisco

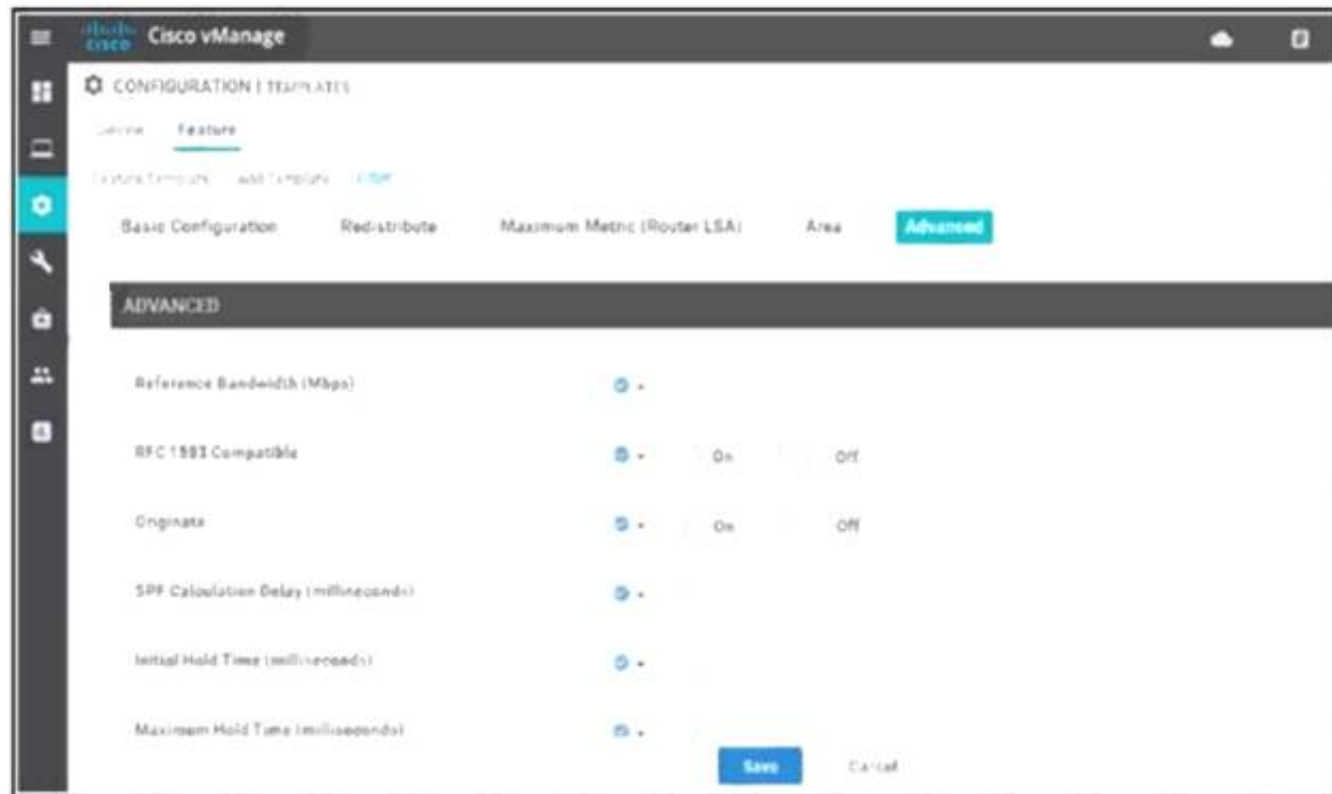
## Exam Questions 300-415

Implementing Cisco SD-WAN Solutions (ENSDWI)



### NEW QUESTION 1

Refer to the exhibit.



A network administrator is configuring OSPF advanced configuration parameters from a template using the vManager GUI for a branch WAN Edge router to calculate the cost of summary routes to an ASBR. Which action achieves this configuration?

- A. Disable RFC 1583 Compatible
- B. Enable Originate
- C. Enable RFC 1M3 Compatible
- D. Disable Original

**Answer: C**

### NEW QUESTION 2

Which two image formats are supported for controller codes? (Choose two.)

- A. .nxos
- B. .qcow2
- C. .ova
- D. .bin
- E. Tgz

**Answer: BC**

### NEW QUESTION 3

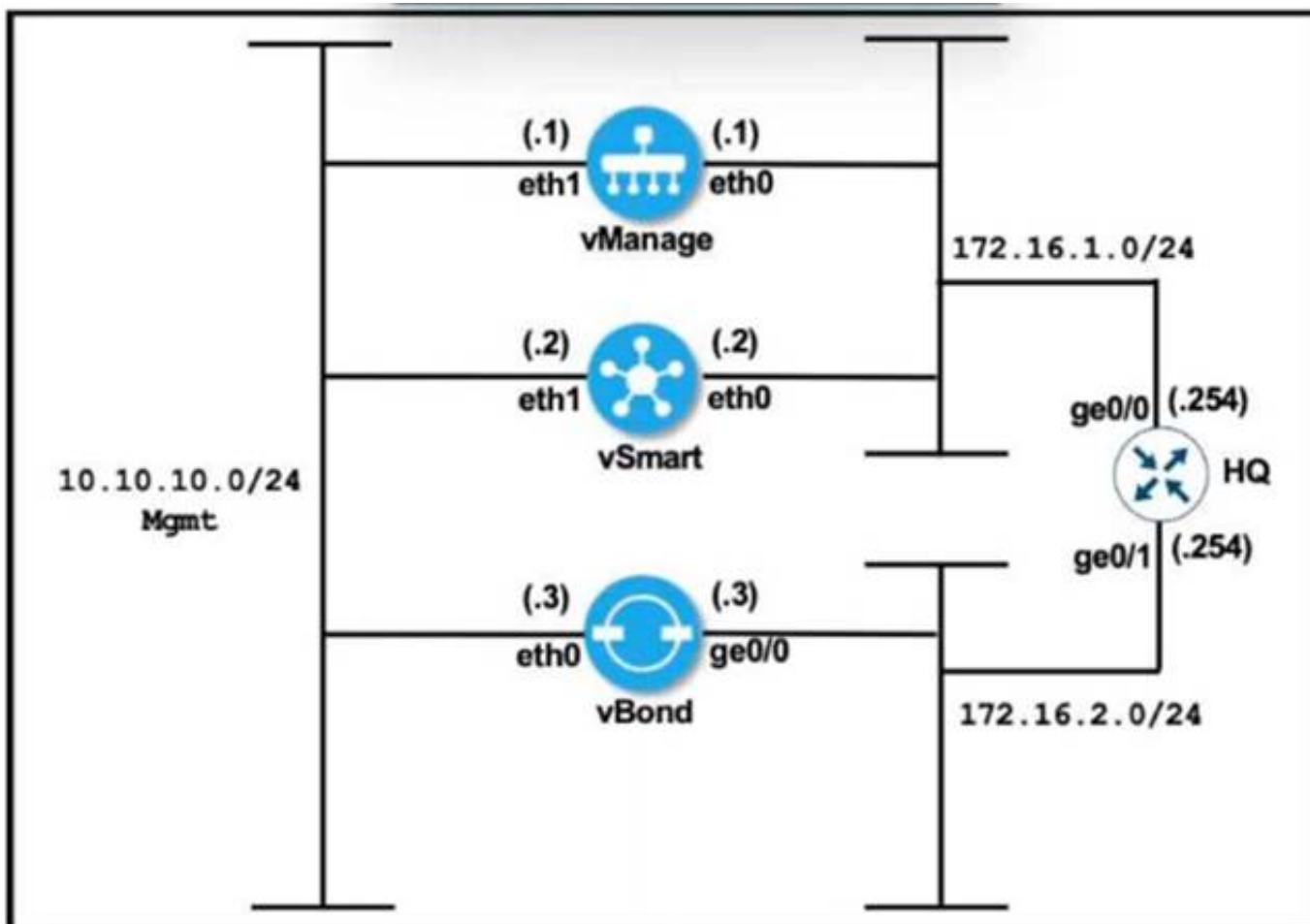
Which two platforms for the Cisco SD-WAN architecture are deployable in a hypervisor on-premises or in IAAS Cloud? (Choose two.)

- A. CSR 1000v
- B. vEdge 100c
- C. vEdge Cloud
- D. vEdge 2000
- E. ISR 4431

**Answer: AC**

### NEW QUESTION 4

Refer to the exhibit.



vManage	vBond
<pre> system   system-ip 10.10.10.101   host-name vManage   site-id 1   clock timezone Europe/London   vbond 172.16.2.1   organization-name Cisco.com ! vpn 0   interface eth1     ip address 172.16.1.1/24     no shut     tunnel-interface     allow-service all   ip route 0.0.0.0/0 172.16.1.254 ! commit </pre>	<pre> system   system-ip 10.10.10.103   host-name vBond   site-id 1   clock timezone Europe/Rome   vbond 172.16.2.1 local   organization-name Cisco.com ! vpn 0   interface ge0/0     ip address 172.16.2.1/24     no shut     tunnel-interface     encapsulation ipsec     allow-service all   ip route 0.0.0.0/0 172.16.1.254 ! commit </pre>

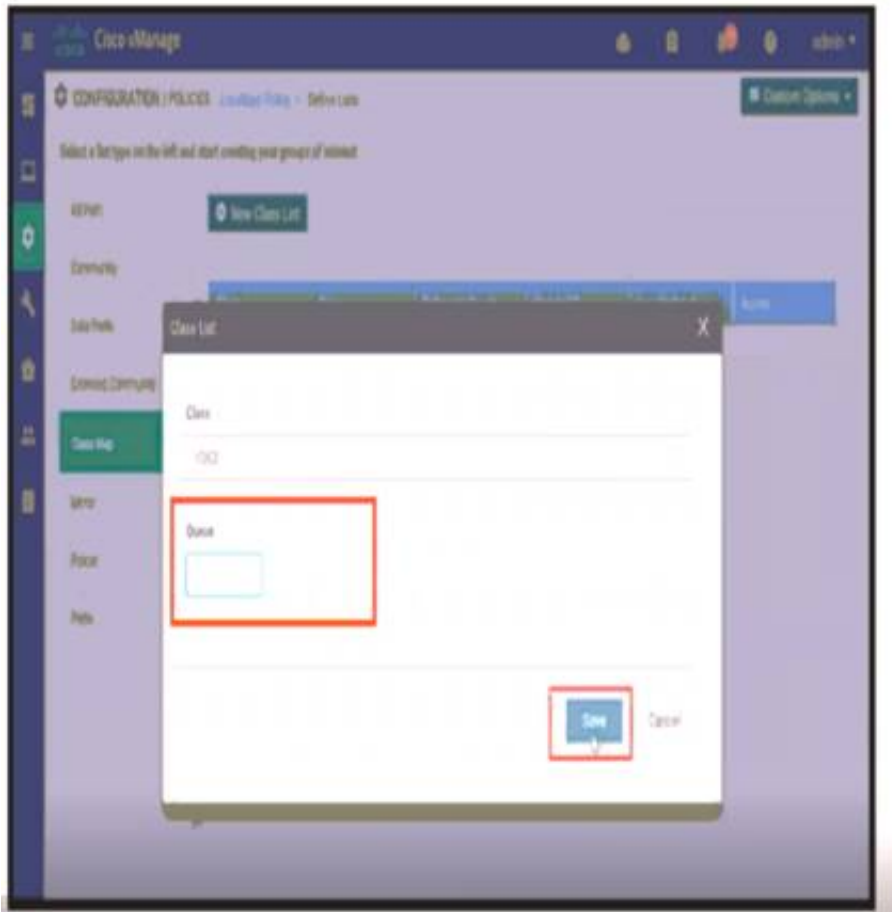
vManage and vBond have an issue establishing a connection to each other. Which configuration resolves the issue?

- A. Configure the timezone on vBond to Europe/London.
- B. Configure the encapsulation ipsec command under the tunnel interface on vManage.
- C. Configure a default route on vBond pointing to 172.16.2.254.
- D. Remove the encapsulation ipsec command under the tunnel interface of vBond.

**Answer: C**

#### NEW QUESTION 5

Refer to the exhibit.



A network administrator is setting the queueing value for voice traffic for one of the WAN Edge routers using vManager GUI. Which queue value must be set to accomplish this task?

- A. 1
- B. 2
- C. 3

**Answer: A**

#### NEW QUESTION 6

An organization wants to use the cisco SD-WAN regionalized service-chaining feature to optimize cost and user experience with application in the network, which allows branch routers to analyze and steer traffic toward the required network function. Which feature meets this requirement?

- A. Cloud Services Platform
- B. VNF Service Chaining
- C. Cloud onRamp for Colocation
- D. Cloud onRamp for IaaS

**Answer: C**

#### Explanation:

<https://www.cisco.com/c/dam/en/us/solutions/collateral/enterprise-networks/sd-wan/nb-06-cisco-sd-wan-ebook>

The solution provides enterprises with multiple distributed branch offices that are clustered around major cities or spread over several countries the ability to regionalize the routing services in colocation facilities.

#### NEW QUESTION 7

How many subnets are necessary in Azure VNet for a WAN Edge device to function in the cloud deployment?

- A. CSR is the WAN Edge device that is supported in the Microsoft cloud
- B. The Microsoft underlay cloud fabric performs the management function.
- C. There must be three subnets in VNet: management, public, and services.
- D. One public subnet is required in VNet
- E. The Microsoft underlay cloud fabric performs all of the routing functions for WAN Edge.
- F. Public and services subnets are required in VNet
- G. The Microsoft underlay cloud fabric performs the management function.

**Answer: D**

#### NEW QUESTION 8

An engineer is configuring a WAN Edge router for DIA based on matching QoS parameters. Which two actions accomplish this task? (Choose two.)

- A. Apply a QoS map policy.
- B. Configure a control policy.
- C. Configure a centralized data policy.
- D. Configure NAT on the transport interface.
- E. Apply a data policy on WAN interface.

**Answer: CD**

#### Explanation:

<https://www.cisco.com/c/dam/en/us/td/docs/solutions/CVD/SDWAN/sdwan-dia-deploy-2020aug.pdf>

### NEW QUESTION 9

Which pathway under Monitor > Network > Select Device is used to verify service insertion configuration?

- A. Real Time
- B. System Status
- C. ACL Logs
- D. Events

**Answer: A**

**Explanation:**

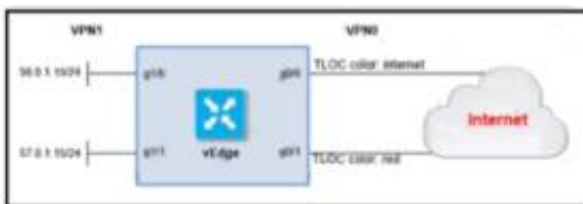
- Using Cisco vManage:

View the configured services on the Real Time monitoring page (**Monitor > Network > hub-device > Real Time**). For Device Options, select OMP Services.

<https://www.cisco.com/c/en/us/td/docs/routers/sdwan/configuration/policies/vedge-20-x/policies-book/service-c>

### NEW QUESTION 10

Refer to the exhibit.



The ge0/0 interface connects to a 30-MB link. A network administrator wants to always have 10 MB available for high priority traffic. When lower-priority traffic busts exceed 20 MB. Traffic should be redirected to the second WAN interface ge0/1. Which set of configurations accomplishes this task?

A)

```
policy
  policer bursty-traffic
    rate 10000
    burst 20000
    exceed drop
  access-list policer-bursty-traffic
    sequence 10
    match
      source-ip 56.0.1.0/24
    action accept
      policer bursty-traffic
    default-action accept
```

B)

```
policy
  policer bursty-traffic
    rate 100000
    burst 20000
    exceed continue
  access-list policer-bursty-traffic
    sequence 10
    match
      source-ip 56.0.1.0/24
    action accept
      policer bursty-traffic
    default-action accept
```

C)

```
policy
  policer bursty-traffic
    rate 1000000
    burst 20000
    exceed remark
  access-list policer-bursty-traffic
    sequence 10
    match
      source-ip 56.0.1.0/24
    action accept
      policer bursty-traffic
    default-action accept
```

D)

```
policy
  policer bursty-traffic
    rate 10
    burst 20
    exceed remark
  access-list policer-bursty-traffic
    sequence 10
    match
      source-ip 56.0.1.0/24
    action accept
  policer bursty-traffic
  default-action accept
```

- A. Option A
- B. Option B
- C. Option C
- D. Option D

**Answer: C**

**Explanation:**

```
policy
  policer bursty-traffic
    rate 10000000
    burst 20000
    exceed remark
  access-list policer-bursty-traffic
    sequence 10
    match
      source-ip 56.0.1.0/24
    action accept
  policer bursty-traffic
  default-action accept
```

<https://www.cisco.com/c/dam/en/us/td/docs/routers/sdwan/configuration/config-18-4.pdf#page=546>

#### NEW QUESTION 10

Which set of platforms must be in separate VMS as of release 16.1?

- A. vSmart and WAN Edge
- B. WAN Edge and vBond
- C. vManage and vSmart
- D. vBond and vSmart

**Answer: D**

#### NEW QUESTION 14

An engineer is configuring a data policy for IPv4 prefixes for a single WAN Edge device on a site with multiple WAN Edge devices. How is this policy added using the policy configuration wizard?

- A. In vManage NMS, select the configure policies screen, select the localized policy tab and click add policy
- B. In vSmart controller, select the configure policies screen, select the localized policy tab and click add policy
- C. In vManage NMS, select the configure policies screen, select the centralized policy tab and click add policy
- D. In vManage NMS, select the configure policies screen, select the localized policy tab and click add policy
- E. In vBond orchestrator, select the configure policies screen, select the localized policy tab and click add policy
- F. In vBond orchestrator, select the configure policies screen, select the centralized policy tab and click add policy
- G. In vManage NMS, select the configure policies screen, select the localized policy tab and click add policy
- H. In vManage NMS, select the configure policies screen, select the centralized policy tab and click add policy

**Answer: A**

#### NEW QUESTION 17

Which two different states of a WAN Edge certificate are shown on vManage? (Choose two.)

- A. inactive
- B. active
- C. staging
- D. invalid
- E. provisioned

**Answer: BE**



#### NEW QUESTION 20

What are the default username and password for vSmart Controller when it is installed on a VMware ESXi hypervisor'?

- A. username Cisco password admin
- B. username admin password Cisco
- C. username Cisco password Cisco
- D. username admin password admin

**Answer: D**

#### NEW QUESTION 25

Refer to the exhibit.

```
LAB-ROUTER#show ip route vrf 100
Gateway of last resort is 10.1.9.2 to network 0.0.0.0

m*   0.0.0.0/0 [251/0] via 10.1.9.2, 06:10:53
      [251/0] via 10.1.9.3, 06:10:53
O    10.80.6.0/24
      [110/300] via 172.19.75.78, 20:35:33, GigabitEthernet0/0/2.10
      [110/300] via 172.19.75.66, 1w0d, GigabitEthernet0/0/1.11
O    10.80.56.0/24
      [110/300] via 172.19.75.78, 20:35:33, GigabitEthernet0/0/2.10
      [110/300] via 172.19.75.66, 1w0d, GigabitEthernet0/0/1.11
```

The network administrator has configured a centralized topology policy that results in the displayed routing table at a branch office. Which two configurations are verified by the output? [Choose two.]

- A. The routing table is for the transport VPN.
- B. The default route is learned via OMP.
- C. This routing table is from a cEdge router.
- D. The default route is configured locally.
- E. The configured policy is adding a route tag of 300 to learned routes.

**Answer: BC**

#### NEW QUESTION 26

An engineer is adding a tenant with location ID 399533345 in vManage. What is the maximum number of alphanumeric characters that is accepted in the tenant name filed?

- A. 64
- B. 128
- C. 256
- D. 8

**Answer: B**

**Explanation:**

In the Add Tenant window:

- a. Enter a name for the tenant. It can be up to 128 characters and can contain only alphanumeric characters.

#### NEW QUESTION 31

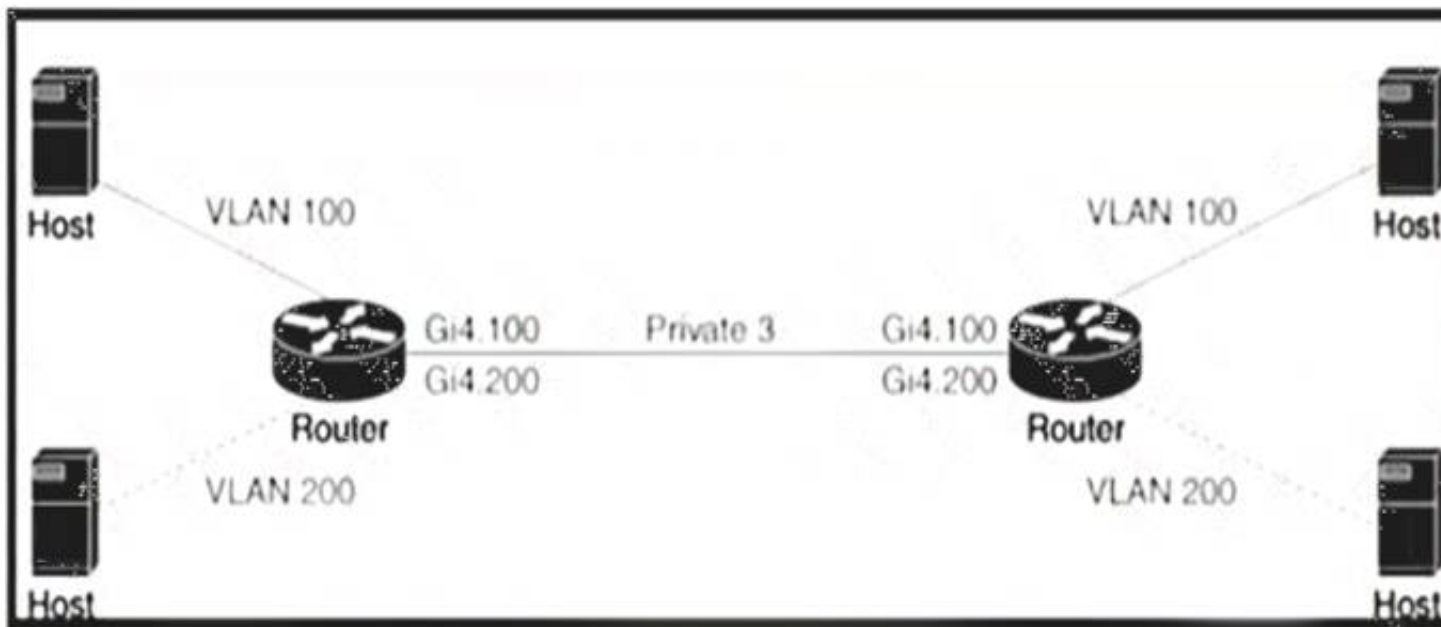
Which type of certificate is installed on vManage for a user to access vManage via a web browser?

- A. Controller Certificate
- B. Web Server Certificate
- C. WAN Edge Certificate
- D. SD-AVC Certificate

**Answer: B**

#### NEW QUESTION 32

Refer to the exhibit



An engineer is configuring a QoS policy to shape traffic for VLAN 100 on a subinterface Which policy configuration accomplishes the task?

A)

```
policy-map shape_GigabitEthernet4.100
class class-default
service-policy xyz_QoS-model
shape average 100000000
!
interface GigabitEthernet4.100
encapsulation dot1Q 200
service-policy output shape_GigabitEthernet4.100
```

B)

```
policy-map shape_GigabitEthernet4.100
class class Queue0
service-policy xyz_QoS-model
shape average 100000000
!
interface GigabitEthernet4.100
encapsulation dot1Q 200
service-policy output shape_GigabitEthernet4.100
```

C)

```
policy-map shape_GigabitEthernet4.200
class class-default
service-policy xyz_QoS-model
shape average 100000000
!
interface GigabitEthernet4.100
encapsulation dot1Q 100
service-policy output shape_GigabitEthernet4.200
```

D)

```
policy-map shape_GigabitEthernet4.200
class class Queue0
service-policy xyz_QoS-model
shape average 100000000
!
interface GigabitEthernet4.100
encapsulation dot1Q 100
service-policy output shape_GigabitEthernet4.100
```

- A. Option A
- B. Option B
- C. Option C
- D. Option D

**Answer: C**

### NEW QUESTION 33

An engineer configures an application-aware routing policy for a group of sites. The locations depend on public and private transports. The policy does not work as expected when one of the transports does not perform properly. This policy is configured:



```

policy
sla-class BULK_DATA
loss 20
latency 300
jitter 100
!
sla-class TRANSACTIONAL_DATA
loss 15
latency 50
jitter 100
!
sla-class REALTIME
loss 20
latency 100
jitter 30
!
app-route-policy VPN-10_MPLS_AND_INET_SITES
vpn-list VPN-10
sequence 1
match
dscp 46
!
action
backup-sla-preferred-color biz-internet
sla-class REALTIME preferred-color private1
!
!
sequence 11
match
dscp 34
!
action
backup-sla-preferred-color biz-internet
sla-class TRANSACTIONAL_DATA preferred-color private1
!
!
!

```

which configuration completes the policy so that it works for all locations?

A)

```

sla-class TRANSACTIONAL_DATA
loss 5
latency 50
jitter 100
!
sla-class REALTIME
loss 2
latency 100
jitter 30
!

```

B)

```

sla-class TRANSACTIONAL_DATA
loss 2
latency 100
jitter 30
!
sla-class REALTIME
loss 15
latency 100
jitter 100
!

```

C)

```

sla-class BULK_DATA
loss 10
latency 300
jitter 100
!
sla-class REALTIME
loss 2
latency 100
jitter 30
!

```

D)

```
sla-class BULK_DATA
loss 15
latency 100
jitter 100
!
sla-class TRANSACTIONAL_DATA
loss 10
latency 300
jitter 100
!
```

- A. Option A
- B. Option B
- C. Option C
- D. Option D

**Answer:** A

#### NEW QUESTION 35

Which secure connection should be used to access the REST APIs through the Cisco vManage web server?

- A. HTTP inspector interface
- B. authenticated HTTPS
- C. authenticated DTLS
- D. JSON Inspector interface

**Answer:** B

#### Explanation:

<https://documenter.getpostman.com/view/3224967/SVmpXhXd#ed9ccd34-cc5a-4258-bb6b-9b3848b7f650>

#### NEW QUESTION 37

A network administrator is bringing up one WAN Edge for branch connectivity. Which types of tunnels form when the WAN edge router connects to the SD-WAN fabric?

- A. DTLS or TLS tunnel with vBond controller and IPsec tunnel with vManage controller.
- B. DTLS or TLS tunnel with vBond controller and IPsec tunnel with other WAN Edge routers.
- C. DTLS or TLS tunnel with vSmart controller and IPsec tunnel with other Edge routers.
- D. DTLS or TLS tunnel with vSmart controller and IPsec tunnel with vBond controller.

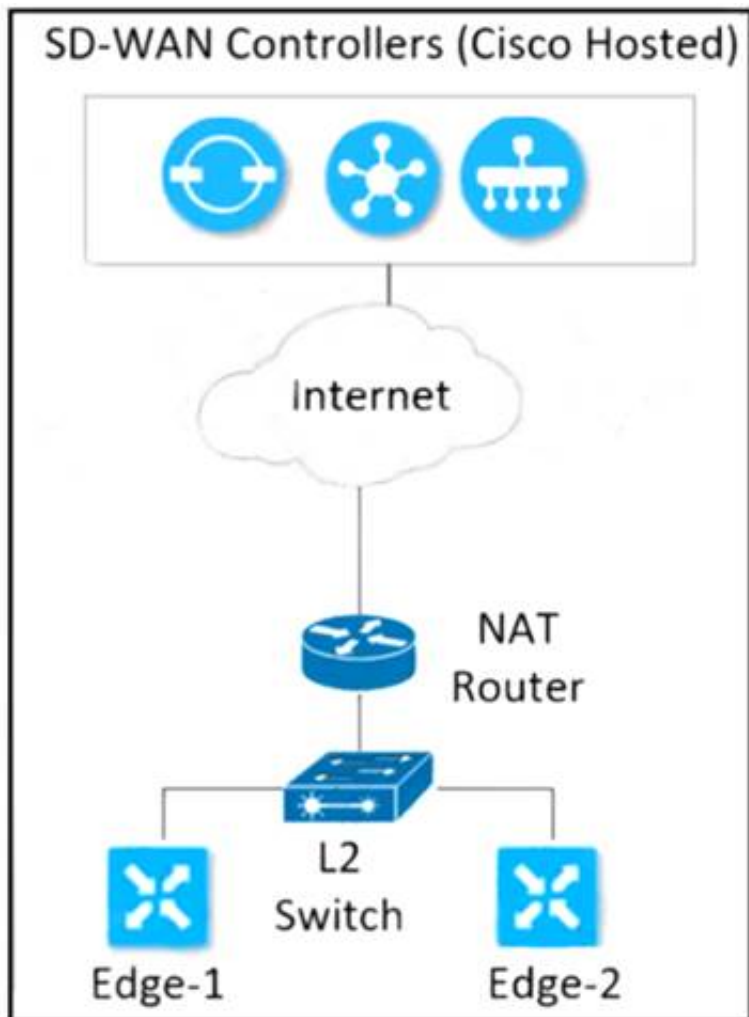
**Answer:** C

#### Explanation:

The WAN Edge routers form a permanent Datagram Transport Layer Security (DTLS) or Transport Layer Security (TLS) control connection to the vSmart controllers and connect to both of the vSmart controllers over each transport. The routers also form a permanent DTLS or TLS control connection to the vManage server, but over just one of the transports. The WAN Edge routers securely communicate to other WAN Edge routers using IPsec tunnels over each transport. The Bidirectional Forwarding Detection (BFD) protocol is enabled by default and runs

#### NEW QUESTION 38

Refer to the exhibit



Which configuration must the engineer use to form underlay connectivity for the Cisco SD-WAN network?

A)

```

R1
vpn 512
interface eth0
ip address 10.0.0.21/24
no shutdown
!
ip route 0.0.0.0/0 10.0.0.254
  
```

```

R2
vpn 512
interface eth0
ip address 10.0.0.2/24
no shutdown
!
ip route 0.0.0.0/0 10.0.0.254
  
```

B)

```

R1
vpn 10
interface ge0/2
ip address 10.10.10.9/29
no shutdown
!
ip route 0.0.0.0/0 10.10.10.11
  
```

```

R2
vpn 10
interface ge0/2
ip address 10.10.10.10/29
no shutdown
!
ip route 0.0.0.0/0 10.10.10.11
  
```

C)

```

R1
vpn 0
interface 10ge0/0
ip address 10.50.0.2/29
no shutdown
!
ip route 0.0.0.0/0 10.50.0.3
  
```

```

R2
vpn 0
interface 10ge0/0
ip address 10.50.0.1/29
no shutdown
!
ip route 0.0.0.0/0 10.50.0.3
  
```

D)

```
R1
vpn 0
interface ge0/0
ip address 10.50.0.2/30
tunnel-interface
!
ip route 0.0.0.0/0 10.50.0.4

R2
vpn 0
interface ge0/0
ip address 10.50.0.3/30
tunnel-interface
!
ip route 0.0.0.0/0 10.50.0.4
```

- A. Option A
- B. Option B
- C. Option C
- D. Option D

**Answer:** C

#### NEW QUESTION 40

A network administrator configures SNMPv3 on a Cisco WAN Edge router from CLI for monitoring purposes. How many characters are supported by the `snmp user <username>` command?

- A. from 1 to 8
- B. from 1 to 16
- C. from 1 to 32
- D. from 1 to 48

**Answer:** C

#### NEW QUESTION 44

A network administrator is configuring a centralized control policy based on match-action pairs for multiple conditions, which order must be configured to prefer Prefix List over TLOC and TLOC over Origin?

- A. highest to lowest sequence number
- B. nonsequential order
- C. deterministic order
- D. lowest to highest sequence number

**Answer:** D

#### Explanation:

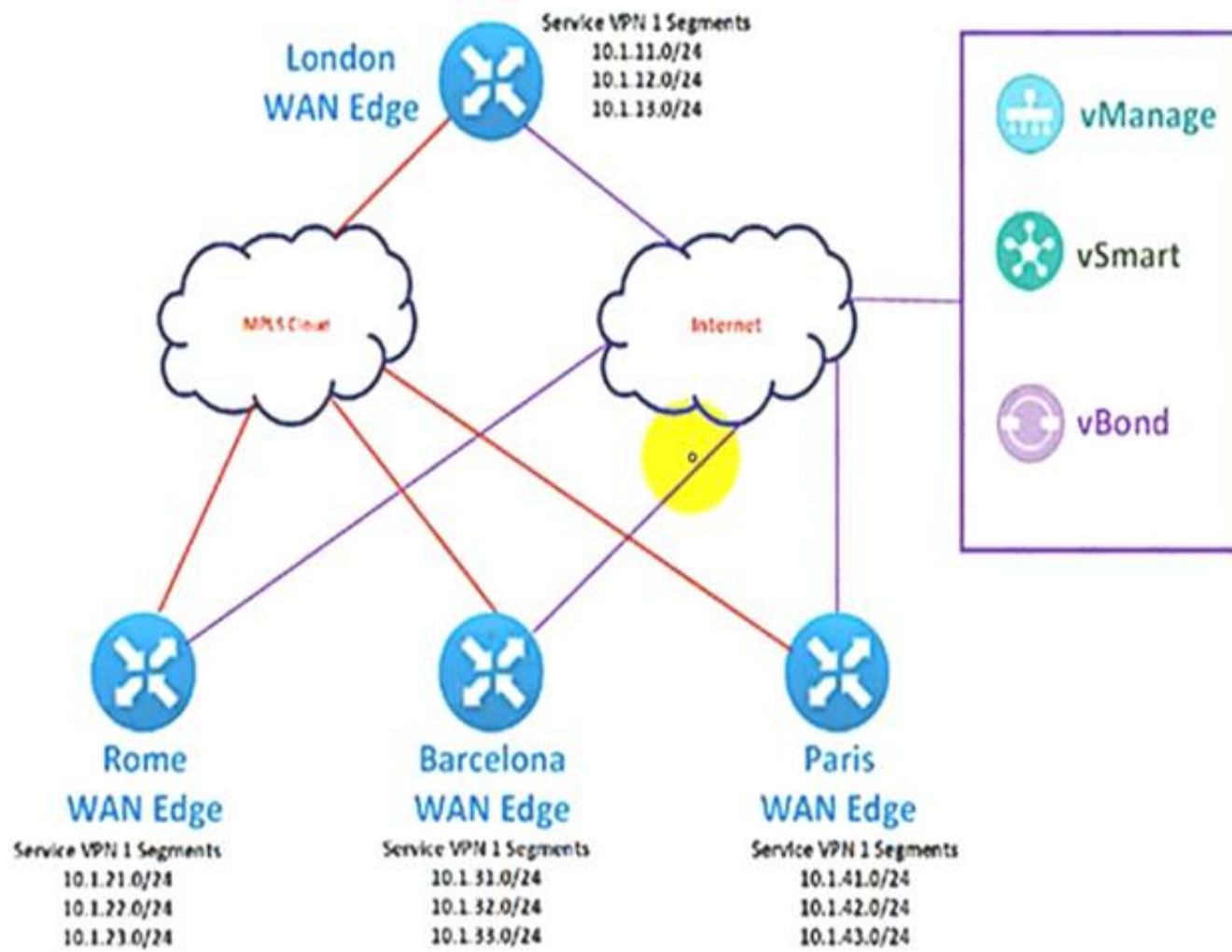
A centralized control policy consists of a series of numbered (ordered) sequences of match-action pairs that are evaluated in order, **from lowest sequence number to highest sequence number**. When a route or TLOC matches the match conditions, the associated action or actions are taken and policy evaluation on that packet stops. Keep this process in mind as you design your policies to ensure that the desired actions are taken on the items subject to policy.

If a route or TLOC matches no parameters in any of the sequences in the policy configure, it is, by default, rejected and discarded.

#### NEW QUESTION 47

Refer to the exhibit.





The Cisco SD-WAN network is configured with a default full-mesh topology. An engineer wants Paris WAN Edge to use the Internet HOC as the preferred TLOC for MSN Messenger and AOL Messenger traffic. Which policy achieves this goal?

A)



B)



C)



D)



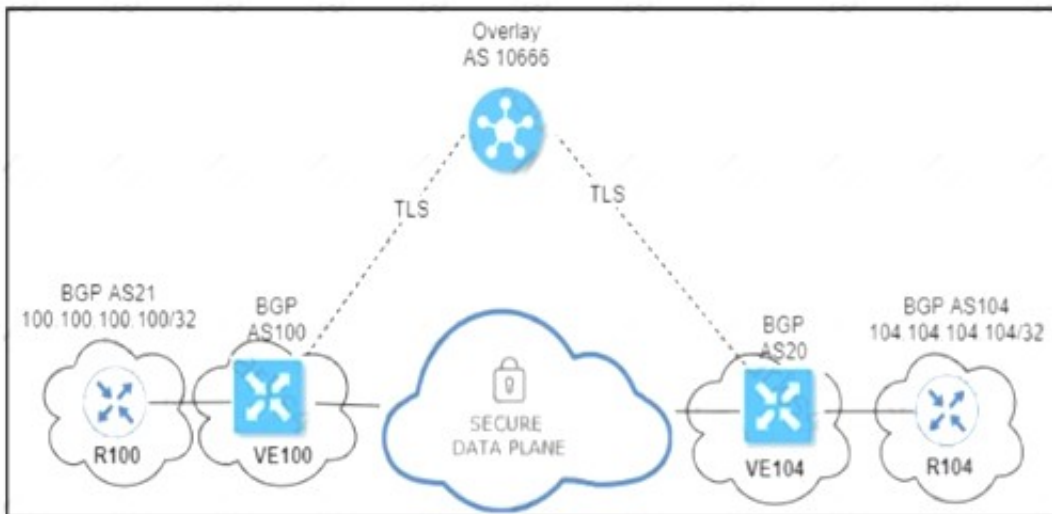


- A. Option A
- B. Option B
- C. Option C
- D. Option D

**Answer: A**

#### NEW QUESTION 48

Refer to the exhibit.



An engineer configured OMP with an overlay-as of 10666. What is the AS-PATH for prefix 104.104.104.104/32 on R100?

- A. 100 10666 104
- B. 100 10666
- C. 100 10666 20 104
- D. 100 20 104

**Answer: A**

#### NEW QUESTION 52

A network engineer must configure all branches to communicate with each other through the Service Chain Firewall located at the headquarters site. Which configuration allows the engineer to accomplish this task?

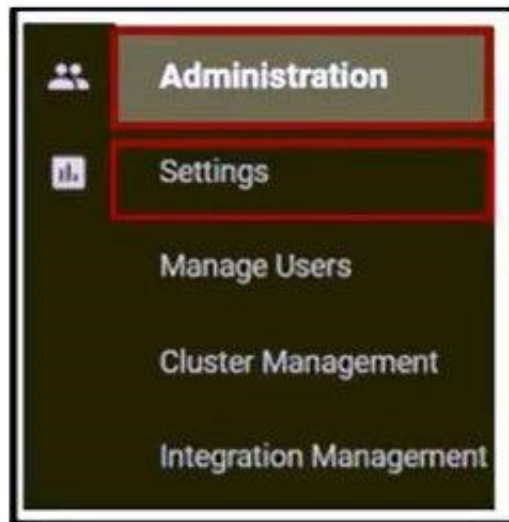
A)



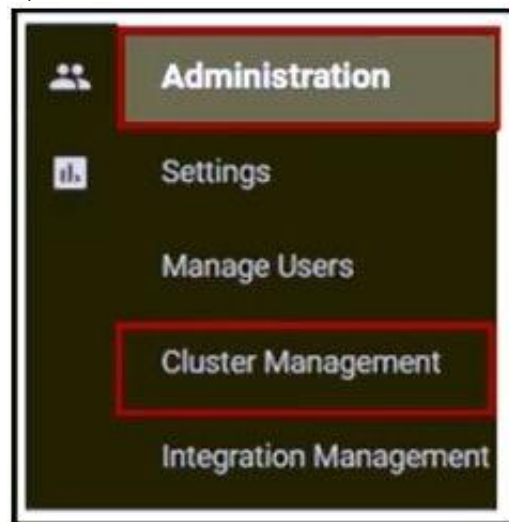
B)



C)



D)



- A. Option A
- B. Option B
- C. Option C
- D. Option D

**Answer: B**

#### NEW QUESTION 54

Which third-party Enterprise CA server must be used (or a cloud-based vSmart controller)?

- A. RootCert
- B. Microsoft
- C. RADIUS
- D. VeriSign

**Answer: A**

#### NEW QUESTION 58

A network administrator is configuring VRRP to avoid a traffic black hole when the transport side of the network is down on the master device. What must be configured to get the fastest failover to standby?

- A. lower timer interval
- B. prefix-list tracking
- C. higher group ID number
- D. OMP tracking

**Answer: B**

**Explanation:**

```
vEdge(config-vrrp)# track-prefix-list list-name
```

If all OMP sessions are lost, VRRP failover occurs as described for the track-omp option. In addition, if reachability to all the prefixes in the list is lost, VRRP failover occurs immediately, without waiting for the OMP hold timer to expire, thus minimizing the amount of overlay traffic is dropped while the vEdge routers determine the VRRP master.

#### NEW QUESTION 59

Which policy tracks path characteristics such as loss, latency, and jitter in vManage?

- A. VPN
- B. control
- C. app-route
- D. data

**Answer:** C

**Explanation:**

<https://www.cisco.com/c/en/us/td/docs/routers/sdwan/configuration/policies/ios-xe-17/policies-book-xe/applicat>

**NEW QUESTION 60**

A Cisco SD-WAN customer has a requirement to calculate the SHA value for files as they pass through the device to see the returned disposition and determine if the file is good, unknown or malicious. The customer also wants to perform real-time traffic analysis and generate alerts when threats are detected Which two Cisco SD-WAN solutions meet the requirements? (Choose two.)

- A. Cisco Trust Anchor Module
- B. Cisco Threat Grid
- C. Cisco Snort IPS
- D. Cisco AMP
- E. Cisco Secure Endpoint

**Answer:** CD

**NEW QUESTION 64**

An engineer wants to automate the onboarding process for a WAN Edge router with vManage. Which command will accomplish this?

- A. request vedge-cloud activate chassis-number <chassis-number> serial <serial>
- B. request vedge-cloud activate chassis-number <chassis-number> token <token-number>
- C. request vedge-cloud activate serial <serial> token <token-number>
- D. request vedge-cloud activate chassis-number <chassis-number> organization <organization>

**Answer:** B

**Explanation:**

```
vedge#  
vedge# vedge# request vedge-cloud activate chassis-number 19f2059b-5fd1-9027-a665-24c33d223247 token 22ee00b3a0c22d8269725d1cb495b718
```

**NEW QUESTION 67**

When VPNs are grouped to create destination zone in Zone-Based Firewall, how many zones can a single VPN be part of?

- A. two
- B. four
- C. one
- D. three

**Answer:** C

**NEW QUESTION 72**

Refer to the exhibit



The network team must configure application-aware routing for the Service VPN 50.0.0.0/16  
The SLA must prefer MPLS for video traffic but the remaining traffic must use a public network What must be defined other than applications before the application-aware policy is create?

- A. SLA Class, Site VP
- B. Prefix
- C. Data Prefix, Site VPN TLOC
- D. Application, SLA VP
- E. Prefix
- F. Color, SLA Class, Sue, VPN

Answer: A

NEW QUESTION 77

Refer to the exhibit.

			PEER		PEER		PEER		PUBLIC		CONTROLLER		GROUP
PEER	PEER	PEER	SITE	DOMAIN	PEER	PRIVATE	PEER	PEER	PUBLIC		LOCAL	COLOR	
TYPE	PROTOCOL	SYSTEM	IP	ID	ID	PRIVATE	IP	PORT	PUBLIC	IP	PORT		STATE
UPTIME	ID												
vbond	dtls	-	0	0	1.3.25.25	12346	1.3.25.25	12346	gold		connect		0
vbond	dtls	-	0	0	1.3.25.25	12346	1.3.25.25	12346	silver		connect		0

An engineer is troubleshooting a control connection Issue. What does "connect" mean in this how control connections output?

- A. Control connection is down
- B. Control connection is connected
- C. Control connection attempt is in progress
- D. Control connection is up

Answer: C

NEW QUESTION 82

What prohibits deleting a VNF image from the software repository?

- A. if the image is stored by vManage
- B. if the image is referenced by a service chain
- C. if the image is uploaded by a WAN Edge device
- D. if the image is included in a configured policy

Answer: D

**NEW QUESTION 84**

Refer to the exhibit

```
vManage#show control local-properties
personality                vmanage
sp-organization-name       Cisco
organization-name          Cisco
system-ip                  10.1.1.10
root-ca-chain-status       Installed
certificate-status          Installed
```

A vBond controller was added to the controller list with the same Enterprise Root CA certificate as vManage. The two controllers can reach each other via VPNO and share the same organization name, but the control connection is not initiated- Which action resolves the issue?

- A. Synchronize the WAN Edge list on vManage with controllers.
- B. Configure NTP on both controllers to establish a connection.
- C. Configure a valid system IP on the vBond controller.
- D. Configure a valid vBond IP on vManage.

**Answer: D**

**NEW QUESTION 85**

Which combination of platforms are managed by vManage?

- A. ISR4321, ASR1001, ENCS, ISRV
- B. ISR4351, ASR1002HX, vEdge2000, vEdge Cloud
- C. ISR4321, ASR1001, Nexus, ENCS
- D. ISR4351, ASR1009, vEdge2000, CSR1000v

**Answer: A**

**NEW QUESTION 87**

Which plane assists in the automatic onboarding of the SD-WAN routers into the SD-WAN overlay?

- A. Data
- B. Orchestration
- C. Management
- D. Control

**Answer: B**

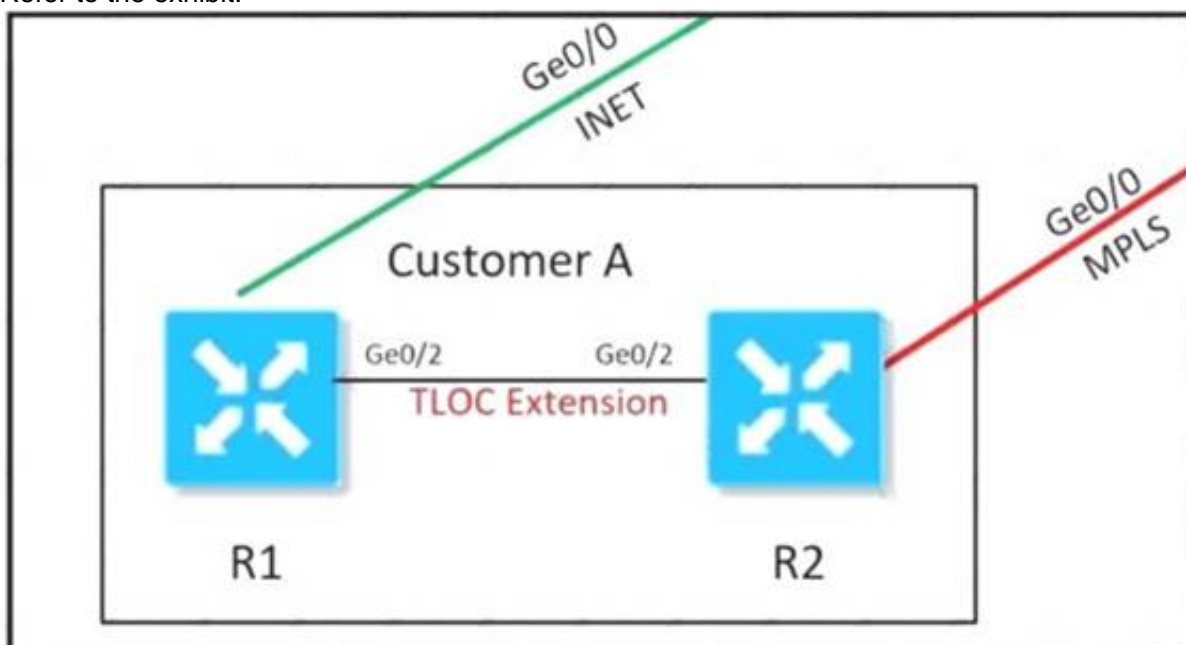
**Explanation:**

The Cisco SD-WAN solution is comprised of separate orchestration, management, control, and data planes.

- The **orchestration plane** assists in the **automatic onboarding** of the **SD-WAN routers into the SD-WAN overlay**.

**NEW QUESTION 89**

Refer to the exhibit.



An MPLS connection on R2 must extend to R1 Users behind R1 must have dual connectivity for data traffic Which configuration provides R1 control connectivity over the MPLS connection?

A)



R1  
interface ge0/2  
ip address 34.34.34.1/30  
tloc-extension ge0/1  
tunnel-interface  
color mpls

R2  
interface ge0/2  
ip address 34.34.34.2/30  
tloc-extension ge0/0  
tunnel-interface  
color public-internet

B)

R1  
interface ge0/2  
ip address 34.34.34.1/30  
tloc-extension ge0/1

R2  
interface ge0/0  
ip address 34.34.34.2/30  
tunnel-interface  
color mpls

C)

```
vpn 0
router
ospf
 redistribute omp route-policy OSPF_Route_Policy
 area 0
 interface ge0/2
 exit
lists
prefix-list W2_Loopback
ip-prefix 10.10.10.5/32
!
route-policy OSPF_Route_Policy
sequence 1
match
 address W2_Loopback
!
action accept
set
 metric 100
 metric-type type2
```

D)

```
vpn 10
name """" Service VPN 10 """"
router
ospf
 redistribute omp route-policy OSPF_Route_Policy
 area 0
 interface ge0/2
 exit
lists
prefix-list W2_Loopback
ip-prefix 10.10.10.5/32
!
route-policy OSPF_Route_Policy
sequence 1
match
 address W2_Loopback
!
action accept
```

- A. Option A
- B. Option B
- C. Option C
- D. Option D

**Answer:** D

#### NEW QUESTION 93

How is multicast routing enabled on devices in the Cisco SD-WAN overlay network?

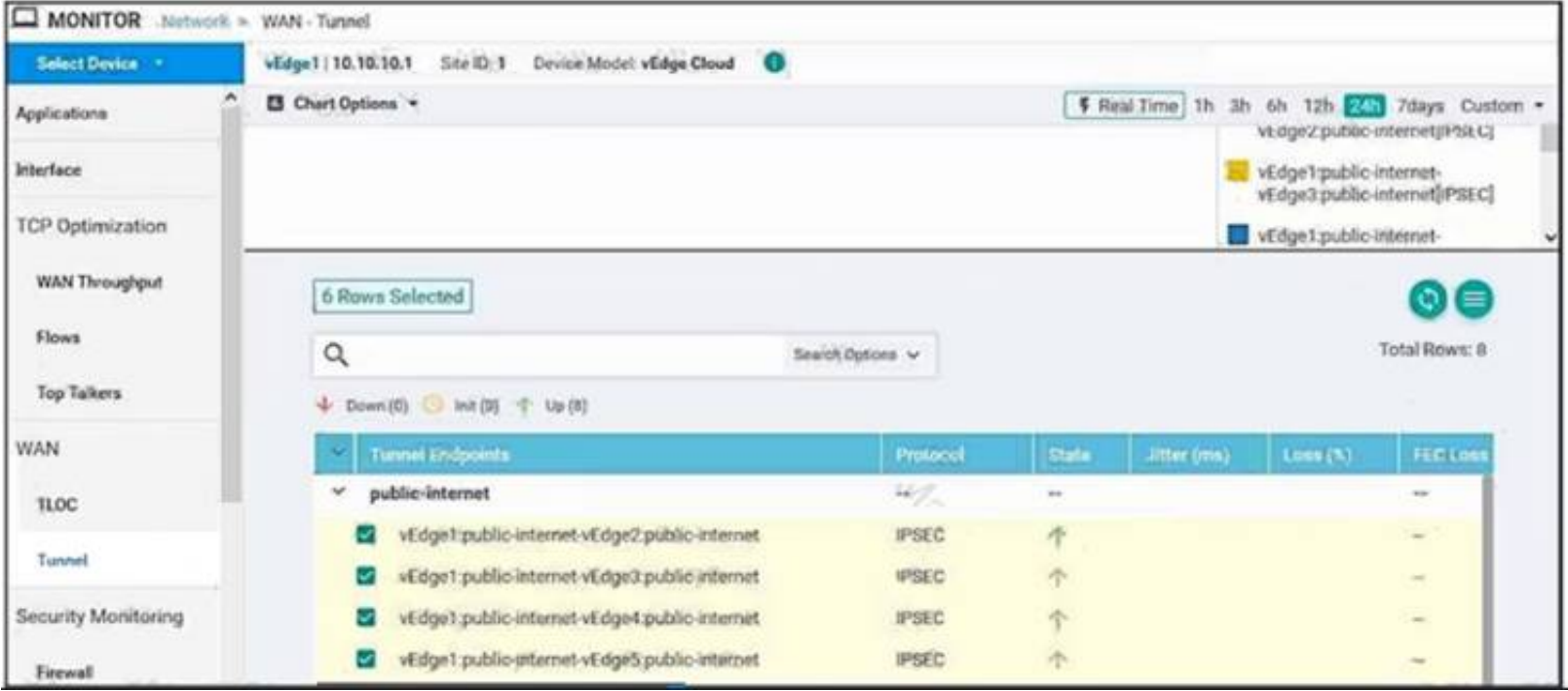
- A. The WAN Edge routers originate multicast service routes to the vSmart controller via OMP, which then forwards joins for requested multicast groups based on IGMP v1 or v2 toward the source or PIM-RP as specified in the original PIM join message.
- B. The vSmart controller originates multicast service routes to the WAN Edge routers via OMP, which then forwards joins for requested multicast groups based on IGMP v1 or v2 toward the source or PIM-RP as specified in the original PIM join message
- C. The vSmart controller originates multicast service routes to the WAN Edge routers via OMP, which then forwards joins (or requested multicast groups based on IGMP v2 or v3 toward the source or PIM-RP as specified in the original PIM join message
- D. The WAN Edge routers originate multicast service routes to the vSmart controller via OMP, which then forwards joins for requested multicast groups based on IGMP v2 or v3 toward the source or PIM-RP as specified in the original PIM join message
- E. which then forwards joins for requested multicast groups based on IGMP v2 or v3 toward the source or PIM-RP as specified in the original PIM join message

**Answer:** A

#### Explanation:

<https://www.cisco.com/c/en/us/td/docs/routers/sdwan/configuration/routing/ios-xe-17/routing-book-xe/m-multic>

**NEW QUESTION 94**  
Refer to the exhibit.



Which command-line configuration on a WAN Edge device achieves these results?

- A)
- ```

vpn 0
interface ge0/0
 ip address 10.50.0.101/30
 tunnel-interface
  encapsulation gre
  color public-internet
  allow-service ntp

ip route 0.0.0.0/0 10.50.0.102

```
- B)
- ```

vpn 0
interface ge0/0
 ip address 10.50.0.101/30
 tunnel-interface
  encapsulation ipsec
  color public-internet restrict
  allow-service all
  allow-service netconf

ip route 0.0.0.0/0 10.50.0.102

```

- C)
- ```

vpn 0
interface ge0/0
 ip address 10.50.0.101/30
 tunnel-interface
  encapsulation ipsec
  allow-service none

ip route 0.0.0.0/0 10.50.0.102

```

- D)
- ```

vpn 1
interface ge0/0
 ip address 10.50.0.101/30
 tunnel-interface
  encapsulation ipsec
  color public-internet restrict
  allow-service all
  allow-service netconf

ip route 0.0.0.0/0 10.50.0.102

```

- A. Option A  
B. Option B  
C. Option C  
D. Option D

**Answer: B**

**NEW QUESTION 97**

An engineer is configuring the branch office with a 172.16.0.0/16 subnet to use DIA for Internet traffic. All other traffic must flow to the central site or branches using the MPLS circuit Which configuration meets the requirement?

- A)

```
data-policy SDW_DIA
vpn-list VPN172
sequence 1
match
source-ip 172.16.0.0/16
destination-ip 172.16.0.0/16
!
sequence 2
match
source-data-prefix-list DIA
action accept
nat use-vpn 0
!
default-action accept
```

B)

```
data-policy SDW_DIA
vpn-list VPN172
sequence 1
match
source-ip 172.16.0.0/16
action accept
!
sequence 2
match
source-data-prefix-list DIA
action accept
nat use-vpn 0
!
default-action accept
```

C)

```
data-policy SDW_DIA
vpn-list VPN172
sequence 1
match
source-ip 172.16.0.0/16
destination-ip 172.16.0.0/16
action accept
!
sequence 2
match
source-data-prefix-list DIA
action accept
nat use-vpn 0
!
default-action accept
```

D)

```
data-policy SDW_DIA
vpn-list VPN172
sequence 1
match
source-ip 172.16.0.0/16
destination-ip 172.16.0.0/16
!
sequence 2
match
source-data-prefix-list DIA
action accept
!
default-action accept
```

- A. Option A
- B. Option B
- C. Option C
- D. Option D

Answer: C

#### NEW QUESTION 100

Refer to the exhibit



	Controller Type	Hostname	System IP	Expiration Date	uuid	Operation Status	Site ID	Certificate Serial
	vBond	vBond	10.1.1.103	14 Jun 2021 3:49:50 PM +04	f1d00	Installed	1	615DBF69000000000005
	vSmart	-	-	-	12aa1...	CSR Generated	-	No certificate installed
	vManage	vManage1	10.1.1.101	14 Jun 2021 2:17:34 PM +04	ca6-4f8	vBond Updated	1	61699683060000000002

vManage and vBond have an issue establishing a connection to vSmart Which two actions does the administrator take to fix the issue? (Choose two)  
 Install the certificate received from the certificate server.

- A. Manually resync vManage and vBond
- B. Reconfigure the vSmart from CLI with the proper Hostname & System IP
- C. Delete and re-add vSmart Click Generate and validate CSR
- D. Request a certificate from the certificate server based on the CSR for the vSmart

**Answer:** CD

#### NEW QUESTION 103

When redistribution is configured between OMP and BGP at two Data Center sites that have Direct Connection interlink, which step avoids learning the same routes on WAN Edge routers of the DCs from LAN?

- A. Define different VRFs on both DCs
- B. Set same overlay AS on both DC WAN Edge routers
- C. Set down-bit on Edge routers on DC1
- D. Set OMP admin distance lower than BGP admin distance

**Answer:** B

#### Explanation:

Typically, there are more than one datacenters for HA/redundancy requirements. After successful migration of the first datacenter, migrate the second datacenter in a similar method as explained in this section. Note that a routing loop can occur if there is a backdoor link between the datacenter sites and route advertisement is configured between the two datacenters. To avoid the loop, any of the three methods explained below can be used:

1. Use the same Autonomous System Numbers (ASN) on edge routers of the two datacenters. Because of the same ASN, the AS-PATH attribute will avoid learning the same prefixes on the edge routers that are advertised by the other datacenter towards the LAN side.
2. Use overlay-AS to insert Overlay Management Protocol (OMP) AS number when redistributing the routes from OMP into LAN side towards DC LAN. Configure all DC SD-WAN edge routers with the same overlay-as. This allows the edges to filter the routes advertised by the other DCs edge devices towards the LAN side and prevents redistributing the same routes back into OMP.
3. Use tags or communities to mark the prefixes at one datacenter when redistributing to DC LAN and filter on the edge of the other datacenter when learning advertisements from the LAN side.

#### NEW QUESTION 104

What problem happens on a device with two serial numbers, a unique device identifier (UDI), and secure unique device identifier (SUDI) when an engineer provisions ISR 4000 by PnP using only a UDI?

- A. It encounters spanning tree issues
- B. It faces interface buffer overflow patterns
- C. It encounters redirection problems.
- D. It encounters memory overload problems

**Answer:** D

#### NEW QUESTION 108

How must the application-aware enterprise firewall policies be applied within the same WAN Edge router?

- A. within and between zones
- B. between two VPN tunnels
- C. within zone pair
- D. between two VRFs

**Answer:** C

#### NEW QUESTION 113

An engineer must configure two branch WAN Edge devices where an Internet connection is available and the controllers are in the headquarters. The requirement is to have IPsec VPN tunnels established between the same colors. Which configuration meets the requirement on both WAN Edge devices?

☒ WAN Edge 1

```
vpn 0
interface ge0/0
ip address 10.0.0.1/24
ipv6 dhcp-client
tunnel-interface
color biz-internet restrict
encapsulation ipsec
```

☒ WAN Edge 2

```
vpn 0
interface ge0/0
ip address 10.0.0.2/24
ipv6 dhcp-client
tunnel-interface
color default
encapsulation ipsec
```

☒ WAN Edge 1

```
vpn 0
interface ge0/0
ip address 10.0.0.1/24
ipv6 dhcp-client
tunnel-interface
color default
encapsulation ipsec
```

☒ WAN Edge 2

```
vpn 0
interface ge0/0
ip address 10.0.0.2/24
ipv6 dhcp-client
tunnel-interface
color default
encapsulation ipsec
```

☒ WAN Edge 1

```
vpn 0
interface ge0/0
ip address 10.0.0.1/24
ipv6 dhcp-client
tunnel-interface
color public-internet restrict
encapsulation ipsec
```

☒ WAN Edge 2

```
vpn 0
interface ge0/0
ip address 10.0.0.2/24
ipv6 dhcp-client
tunnel-interface
color gold restrict
encapsulation ipsec
```

☒ WAN Edge 1

```
vpn 0
interface ge0/0
ip address 10.0.0.1/24
ipv6 dhcp-client
tunnel-interface
color gold restrict
encapsulation ipsec
```

☒ WAN Edge 2

```
vpn 0
interface ge0/0
ip address 10.0.0.2/24
ipv6 dhcp-client
tunnel-interface
color gold restrict
encapsulation ipsec
```

- A. Option A  
B. Option B  
C. Option C  
D. Option D

**Answer: D**



#### NEW QUESTION 114

Which storage format is used when vManage is deployed as a virtual machine on a KVM hypervisor?

- A. .iso
- B. .qcow2
- C. .ova
- D. .tgz

**Answer: B**

#### NEW QUESTION 115

Refer to exhibit.

PEER INSTANCE COLOR	PEER TYPE STATE	PEER PRIVATE PROTOCOL	PEER SYSTEM IP	SITE ERROR	DOMAIN PUBLIC ID	ID COUNT	PRIVATE IP	LOCAL PORT	REMOTE PUBLIC IP	REPEAT PORT	REMOTE
0	wood	grip	0.0.0.0	0	0	0	192.168.0.231	12346	192.168.0.231	12346	Default
p_down		CRTRJSEP	NOERR	9			2019-06-01T19:04:32+0200				ten

An engineer is troubleshooting tear down of control connections even though a valid Certificate Serial Number is entered Which two actions resolve the Issue? (Choose two)

- A. Enter a valid serial number on the controllers for a given device
- B. Remove the duplicate IP in the network.
- C. Enter a valid product ID (model) on the PNP portal
- D. Match the serial number file between the controllers
- E. Restore network reachability for the controller

**Answer: CD**

**Explanation:**

<https://community.cisco.com/t5/networking-documents/sd-wan-routers-troubleshoot-control-connections/ta-p/38>

#### NEW QUESTION 117

An engineer must configure local redundancy on a site. Which configuration accomplish this task?

- A. vpn 0interface interface-name
- B. tloc extension interlace nametloc extension interface interface name
- C. vpn 0tloc extension interface
- D. interface-flameinterface interface-name tloc-extension

**Answer: A**

#### NEW QUESTION 121

In a Cisco SD-WAN network, which component is responsible for distributing route and policy information via the OMP?

- A. vManage
- B. vSmart Controller
- C. vBond Orchestrator
- D. WAN Edge Router

**Answer: B**

**Explanation:**

The Cisco vSmart Controller maintains a centralized route table that stores the route information, called OMP routes, that it learns from the vEdge routers and from any other Cisco vSmart Controllers in the Cisco SD-WAN overlay network. Based on the configured policy, the Cisco vSmart Controller shares this route information with the Cisco vEdge network devices in the network so that they can communicate with each other.

#### NEW QUESTION 123

Which two services are critical for zero touch provisioning on-boarding? (Choose two)

- A. SNMP
- B. DNS
- C. DHCP
- D. AAA
- E. EMAIL

**Answer: BC**

#### NEW QUESTION 127

Refer to the exhibit.

```

policy
lists
!
  tloc-list dc-preference-east
  tloc 100.100.100.100 color mpls
encap ipsec preference 200
  tloc 101.101.101.101 color mpls
encap ipsec preference 400
!
  site-list sites-region-west
  site-id 1-20
!
  site-list sites-region-east
  site-id 21-40
!
  site-list dc-sites
  site-id 100-101

control-policy adv-dc-preference-west
sequence 10
match route
  site-list dc-sites
!
action accept
set
  tloc-list dc-preference-east
!

!
!
default-action accept
!
!
control-policy adv-dc-preference-east
sequence 10
match route
  site-list dc-sites
!
action accept
set
  tloc-list dc-preference-east
!
!
!
!
default-action accept
!
!
apply-policy
  site-list sites-region-west
  control-policy adv-dc-preference-west
out
!
  site-list sites-region-east
  control-policy adv-dc-preference-east
out
!
!
!
!

```

A customer wants to implement primary and secondary Cisco SD-WAN overlay routing for prefixes that are advertised for both data centers. The east data center (TLOC 101.101.101.101) is primary for east sites, and the west data center (TLOC 100.100.100.100) is primary for west sites. Which configuration change achieves this objective?

A.

```

lists
tloc-list dc-preference-west
tloc 100.100.100.100 color mpls encap ipsec preference 400
tloc 101.101.101.101 color mpls encap ipsec preference 200

control-policy adv-dc-preference-west
sequence 10
match route
  site-list dc-sites
!
action accept
set
  tloc-list dc-preference-west
!
!
default-action accept

```

B.

```

lists
tloc-list dc-preference-west
tloc 100.100.100.100 color mpls encap ipsec preference 200
tloc 101.101.101.101 color mpls encap ipsec preference 400

control-policy adv-dc-preference-west
sequence 10
match route
  site-list dc-sites
!
action accept
set
  tloc-list dc-preference-west
!
!
default-action accept

```

C.

```

tloc-list dc-preference-east
tloc 100.100.100.100 color mpls encap ipsec preference 400
tloc 101.101.101.101 color mpls encap ipsec preference 200

```

D.

```

control-policy adv-dc-preference-west
sequence 10
match route
  site-list dc-sites
!
action accept
set
  tloc-list dc-preference-west
!
!
default-action accept

```

- A. Option A
- B. Option B
- C. Option C
- D. Option D

**Answer:** A

#### NEW QUESTION 128

Which set of elements are verified by the controller to confirm the identity of edge devices?

- A. certificates, organization name and serial number of the device
- B. organization name serial number and system IP of the device
- C. certificates, organization name, and vBond domain
- D. certificates, system IP, and vBond domain

**Answer:** A

#### NEW QUESTION 129

Which controller is excluded from the process of checking against the authorized, allowed list?

- A. vBond
- B. PnP
- C. vSmart
- D. vManage

**Answer:** A

#### NEW QUESTION 131

What is the threshold to generate a warning alert about CPU or memory usage on a WAN Edge router?

- A. 70 to 85 percent
- B. 70 to 90 percent
- C. 75 to 85 percent
- D. 75 to 90 percent

**Answer:** C

#### NEW QUESTION 136

Which policy blocks TLOCs from remotes and allows TLOCs from the data center to form hub-and-spoke peering?

- A. localized control policy
- B. localized data policy
- C. centralized data policy
- D. centralized control policy

**Answer:** C

**Explanation:**

##### Centralized Policy

Centralized policy refers to policy provisioned on Cisco vSmart Controllers, which are the centralized controllers in the Cisco SD-WAN overlay network. Centralized policy comprises two components:

- Control policy, which affects the overlay network-wide routing of traffic
- Data policy, which affects the data traffic flow throughout the VPN segments in the network

#### NEW QUESTION 140

An engineer is adding a tenant with location JD 306432373 in vManage. What is the maximum number of alphanumeric characters that are accepted in the tenant name field?

- A. 64
- B. 128
- C. 256
- D. 8

**Answer:** B

**Explanation:**

In the Add Tenant window:

1. Enter a name for the tenant. It can be up to 128 characters and can contain only alphanumeric characters.



## NEW QUESTION 142

Which device in the SD- WAN solution receives and categorizes event reports, and generates alarms?

- A. WAN Edge routers
- B. vSmart controllers
- C. vManage NMS
- D. vBond controllers

**Answer: C**

### Explanation:

[https://sdwan-docs.cisco.com/Product\\_Documentation/vManage\\_Help/Release\\_17.1/vManage\\_NMS\\_Product\\_](https://sdwan-docs.cisco.com/Product_Documentation/vManage_Help/Release_17.1/vManage_NMS_Product_)

## NEW QUESTION 147

Refer to the exhibit.

```
vEdge1# show control connections
```

PEER TYPE	PEER PROT	PEER SYSTEM IP	SITE ID	DOMAIN ID	PEER PRIVATE IP	PEER PRIV PORT	PEER PUBLIC IP	
vsmart	dtls	10.2.2.2	1	1	10.50.0.5	12446	10.50.0.5	
vsmart	dtls	10.2.2.2	1	1	10.50.0.5	12446	10.50.0.5	
vbond	dtls	0.0.0.0	0	0	10.50.0.9	12346	10.50.0.9	
vbond	dtls	0.0.0.0	0	0	10.50.0.9	12346	10.50.0.9	
vmanage	dtls	10.1.1.1	1	0	10.50.0.1	12446	10.50.0.1	up

An organization is testing a Cisco SD-WAN solution and decided to have the control plane established first and not the data plane at the time of migration. Which configuration achieves this goal?

A)

**CONFIGURATION | CERTIFICATES**

**WAN Edge List** Controllers

[Send to Controllers](#) Click [Send to Controllers](#) to sync the WAN Edge list on all controllers.

Search Options Total Rows: 20

State	Device Model	Chassis Number	Hostname	IP Address	Serial No./Token	Validate
Invalid	vEdge Cloud	9a0cfea0-a463-7dec-c5...	vEdge1	10.10.10.1	BC42AE30	Invalid Staging Valid
Invalid	vEdge Cloud	cc5daa8e-9bb1-7c9d-f5...	vEdge2	10.10.10.2	E1F0754E	Invalid Staging Valid
Invalid	vEdge Cloud	d7b14bb6-f718-b111-8...	vEdge3	10.10.10.3	F5DA0A8D	Invalid Staging Valid
Invalid	vEdge Cloud	92b4f92b-daff-7ce2-c3...	vEdge4	10.10.10.4	BD992059	Invalid Staging Valid
Invalid	vEdge Cloud	0183a420-e93e-41f7-6f...	vEdge5	10.10.10.5	FA460EE6	Invalid Staging Valid

B)

**CONFIGURATION | DEVICES**

**WAN Edge List** Controllers

[Change Mode](#) [Upload WAN Edge List](#) [Export Bootstrap Configuration](#) [Sync Smart Account](#)

**CLI mode** [vManage mode](#) Search Options Total Rows: 20

State	Device Model	Chassis Number	Serial No./Token	Hostname	System IP	Site ID	Mode
Invalid	vEdge Cloud	9a0cfea0-a463-7dec-c586-85f9d29cd56a	BC42AE30	vEdge1	10.10.10.1	1	vManage
Invalid	vEdge Cloud	cc5daa8e-9bb1-7c9d-f545-1a9657a000...	E1F0754E	vEdge2	10.10.10.2	2	vManage
Invalid	vEdge Cloud	d7b14bb6-f718-b111-8dd5-535fa9c968a2	F5DA0A8D	vEdge3	10.10.10.3	3	vManage
Invalid	vEdge Cloud	92b4f92b-daff-7ce2-c3da-622673be0339	BD992059	vEdge4	10.10.10.4	4	vManage
Invalid	vEdge Cloud	0183a420-e93e-41f7-6fc6-f74bb8754881	FA460EE6	vEdge5	10.10.10.5	4	vManage

C)

**CONFIGURATION | CERTIFICATES**

**WAN Edge List** Controllers

[Send to Controllers](#) Click [Send to Controllers](#) to sync the WAN Edge list on all controllers.

Search Options Total Rows: 20

State	Device Model	Chassis Number	Hostname	IP Address	Serial No./Token	Validate
Invalid	vEdge Cloud	9a0cfea0-a463-7dec-c5...	vEdge1	10.10.10.1	BC42AE30	Invalid Staging Valid
Invalid	vEdge Cloud	cc5daa8e-9bb1-7c9d-f5...	vEdge2	10.10.10.2	E1F0754E	Invalid Staging Valid
Invalid	vEdge Cloud	d7b14bb6-f718-b111-8...	vEdge3	10.10.10.3	F5DA0A8D	Invalid Staging Valid
Invalid	vEdge Cloud	92b4f92b-daff-7ce2-c3...	vEdge4	10.10.10.4	BD992059	Invalid Staging Valid
Invalid	vEdge Cloud	0183a420-e93e-41f7-6f...	vEdge5	10.10.10.5	FA460EE6	Invalid Staging Valid

D)








CONFIGURATION | CERTIFICATES

WAN Edge List   Controllers

[Send to Controllers](#)   Click [Send to Controllers](#) to sync the WAN Edge list on all controllers.

Search Options   Total Rows: 20

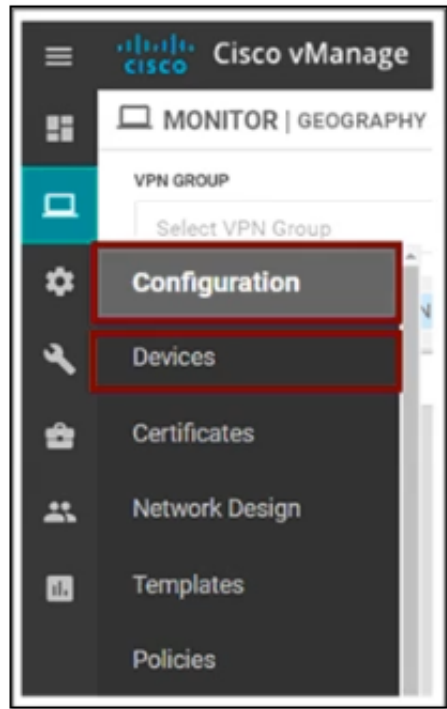
State	Device Model	Chassis Number	Hostname	IP Address	Serial No./Token	Validdate
	vEdge Cloud	9a0cfea0-a463-7dec-c5...	vEdge1	10.10.10.1	BC42AE30	Invalid   Staging   Valid
	vEdge Cloud	cc5daa8e-9bb1-7c9d-f5...	vEdge2	10.10.10.2	E1F0754E	Invalid   Staging   Valid
	vEdge Cloud	d7b14bb6-f718-b111-8...	vEdge3	10.10.10.3	F5DA0A8D	Invalid   Staging   Valid
	vEdge Cloud	92b4f92b-daff-7ce2-c3...	vEdge4	10.10.10.4	BD992059	Invalid   Staging   Valid
	vEdge Cloud	0183a420-e93e-41f7-6f...	vEdge5	10.10.10.5	FA460EE6	Invalid   Staging   Valid

- A. Option A
- B. Option B
- C. Option C
- D. Option D

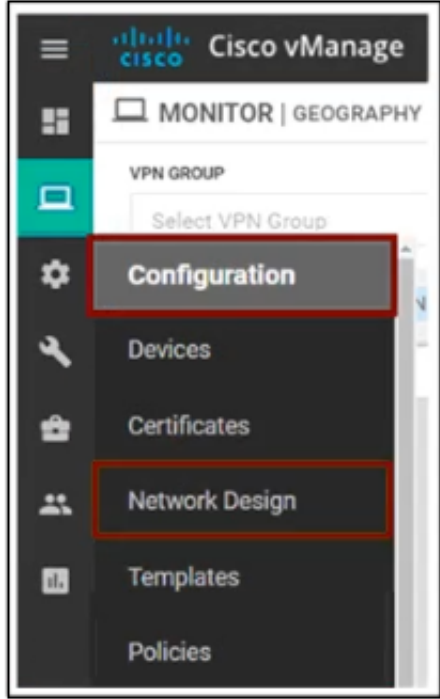
Answer: A

NEW QUESTION 150

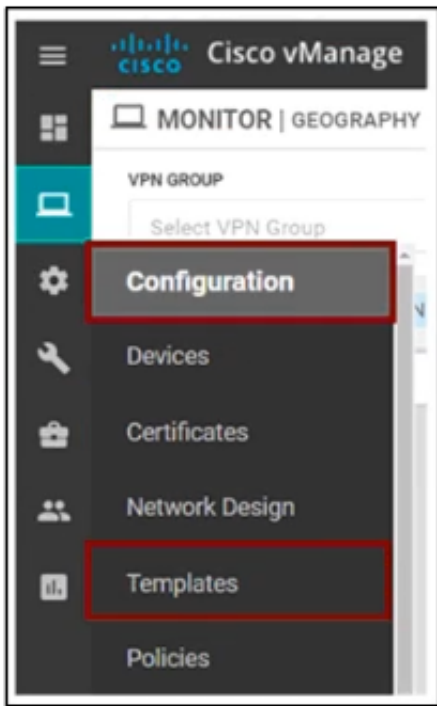
The Cisco SD-WAN engineer is configuring service chaining for a next-generation firewall located at the headquarters. Which configuration creates the service?  
A)



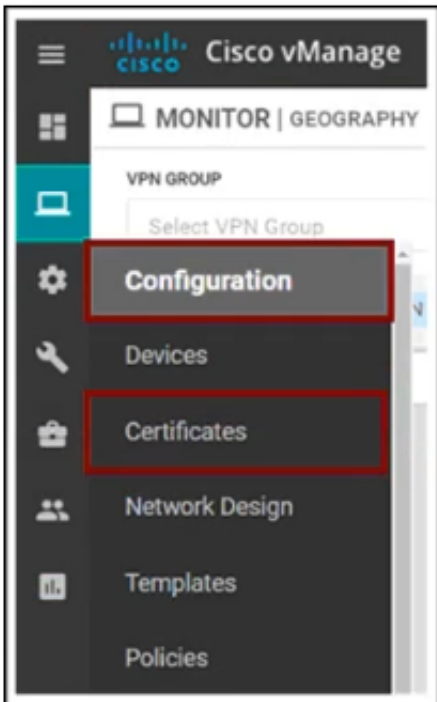
B)



C)



D)



- A. Option A
- B. Option B
- C. Option C
- D. Option D

**Answer: C**

#### NEW QUESTION 154

Which two WAN Edge devices should be deployed in a cloud? (Choose two.)

- A. vEdge 5000v
- B. ASR 1000v
- C. CSR 1000v
- D. vEdge 100wm
- E. vEdge cloud

**Answer: CE**

**Explanation:**

#### 2. Virtual platforms

- Cloud Services Router (CSR) 1000v running IOS XE SD-WAN Software
- vEdge Cloud Router running Viptela OS

#### NEW QUESTION 157

An engineer is troubleshooting a vEdge router and identifies a “DCONFFAIL – DTLS connection failure” message. What is the problem?

- A. certificate mismatch
- B. organization mismatch
- C. memory issue
- D. connectivity issue

**Answer:** D

**Explanation:**

<https://community.cisco.com/t5/networking-documents/sd-wan-routers-troubleshoot-control-connections/ta-p/38>

**NEW QUESTION 159**

An engineer must automate certificate signing through Cisco. Which vManage configuration achieves this task?

A)

```
vpn 0
  dns 208.67.222.222 primary
  allow-service dns
  allow-service sshd
  allow-service netconf
```

B)

```
vpn 0
  allow-service dns
  allow-service sshd
  allow-service netconf
```

C)

```
vpn 512
  dns 208.67.222.222 primary
  allow-service dns
  allow-service sshd
  allow-service netconf
```

D)

```
vpn 512
  allow-service dns
  allow-service sshd
  allow-service netconf
```

A. Option A

B. Option B

C. Option C

D. Option D

**Answer:** A

**NEW QUESTION 163**

A customer has MPLS and Internet as the TLOC colors. An engineer must configure controllers with the Internet and not with MPLS. Which configuration achieves this requirement on vManage?

A)

```
vpn 0
  interface eth1
  ip address 10.50.0.1/24
  tunnel-interface
  color mpls
```

B)

```
vpn 0
  interface eth1
  ip address 10.50.0.1/24
  tunnel-interface
  color public-internet
```

C)

```
vpn 0
  interface eth1
  ip address 10.50.0.1/24
  tunnel-interface
  color biz-internet
```

D)

```
vpn 0
  interface eth1
  ip address 10.50.0.1/24
  tunnel-interface
  color default
```

A. Option A

B. Option B

C. Option C

D. Option D

**Answer:** B

**NEW QUESTION 164**

What must an engineer consider when deploying an SD-WAN on-premises architecture based on ESXi hypervisor?

A. Cisco must provision the backup and snapshots platform for the SD-WAN architecture

B. The managed service provider must provision controllers with their appropriate certificates

- C. The IT team a required to provision the SO-WAN controllers and Is responsAte lor backups and disaster recovery implementation
- D. The IT team will be given access by Cisco to a vManage for configuration If templates and policies coeigmalim

**Answer: C**

**NEW QUESTION 167**

Which feature template configures OMP?

A)

Section	Parameter	Type	Variable/value
Authentication	Authentication Order	Drop-down	local
Local	User/admin/ Password	Device Specific	user_admin_passwd

B)

Section	Parameter	Type	Variable/value
Basic configuration	Number of paths advertised per prefix	Global	16
Advertise	Radio	Global	Off
	Static	Global	Off

C)

Section	Parameter	Type	Variable/value
Server	Hostname/IP Address	Global	10.4.48.13
	VPN ID	Global	1
	Source interface	Global	loopback0

D)

Section	Parameter	Type	Variable/value
Basic configuration	VPN	Global	512
IPv4 Route	Name	Global	Management VPN
	Prefix	Global	0.0.0.0/0
	Gateway	Radio button	Next Hop
	Next Hop	Device Specific	vpn512_mgt_next_hop_ip_addr

- A. Option A
- B. Option B
- C. Option C
- D. Option D

**Answer: B**

**NEW QUESTION 169**

Which two algorithms authenticate a user when configuring SNMPv3 monitoring on a WAN Edge router? (Choose two.)

- A. AES-256
- B. SHA-1
- C. AES-128
- D. MD5
- E. SHA-2

**Answer: AB**

**Explanation:**



Configure SNMPv3

Table 7. Feature History

Feature Name	Release Information	Description
Support for SNMPv3 AES-256 bit Authentication Protocol	Cisco SD-WAN Release 20.5.1	Support introduced for AES-256 bit Authentication Protocol called SHA-256

To configure SNMPv3, in SNMP Version, click V3. For SNMPv3, you can configure groups, users, and trap information. Configure groups and trap information as described above.

To configure SNMPv3 users, in the User section, click **Add New User** and enter the following parameters:

Table 8.

Parameter Name	Description
User	Enter a name of the SNMP user. It can be 1 to 32 alphanumeric characters.
Authentication Protocol	<p>Select the authentication mechanism for the user:</p> <ul style="list-style-type: none"> <li>SHA-1 message digest</li> <li>SHA-256 message digest</li> </ul> <p><b>Note</b> Starting from Cisco SD-WAN Release 20.5.1, SHA-256 authentication protocol was introduced. When you choose SHA-256 as the authentication protocol, you must set the security level as authPriv.</p> <p><b>Note</b> MD5 authentication protocol is deprecated for Cisco SD-WAN Release 20.3.2 and later releases.</p>

<https://www.cisco.com/c/en/us/td/docs/routers/sdwan/configuration/snmp/snmp-book.html>

NEW QUESTION 171

A customer is receiving routes via OMP from vSmart controller for a specific VPN. The customer must provide access to the W2 loopback received via OMP to the OSPF neighbor on the service-side VPN, which configuration fulfils these requirements?

```

vpn 0
router
ospf
 redistribute omp route-policy OSPF_Route_Policy
 area 0
 interface ge0/2
 exit
lists
 prefix-list W2_Loopback
 ip-prefix 10.10.10.5/24
 !
 route-policy OSPF_Route_Policy
 sequence 1
 match
 address W2_Loopback
 !
 default action accept
 set
 metric 100
 metric-type type1

vpn 0
router
ospf
 redistribute omp route-policy OSPF_Route_Policy
 area 0
 interface ge0/2
 exit
lists
 prefix-list W2_Loopback
 ip-prefix 10.10.10.5/32
 !
 route-policy OSPF_Route_Policy
 sequence 1
 match
 address W2_Loopback
 metric 100
 metric-type type1

```

```
vpn 0
router
ospf
 redistribute omp route-policy OSPF_Route_Policy
 area 0
 interface ge0/2
 exit
lists
 prefix-list W2_Loopback
 ip-prefix 10.10.10.5/32
!
 route-policy OSPF_Route_Policy
 sequence 1
 match
  address W2_Loopback
!
 action accept
 set
  metric 100
 metric-type type2

vpn 10
name """" Service VPN 10 """"
router
ospf
 redistribute omp route-policy OSPF_Route_Policy
 area 0
 interface ge0/2
 exit
lists
 prefix-list W2_Loopback
 ip-prefix 10.10.10.5/32
!
 route-policy OSPF_Route_Policy
 sequence 1
 match
  address W2_Loopback

ospf
 redistribute omp route-policy OSPF_Route_Policy
 area 0
 interface ge0/2
 exit
lists
 prefix-list W2_Loopback
 ip-prefix 10.10.10.5/32
!
 route-policy OSPF_Route_Policy
 sequence 1
 match
  address W2_Loopback
!
 action accept
 set
  metric 100
 metric-type type1
```

- A. Option A
- B. Option B
- C. Option C
- D. Option D
- E. Option E

**Answer:** D

**Explanation:**

Answer must start with VPN 10(service side) & should have metric-type 1 and not with VPN 0 (transport side)

**NEW QUESTION 176**

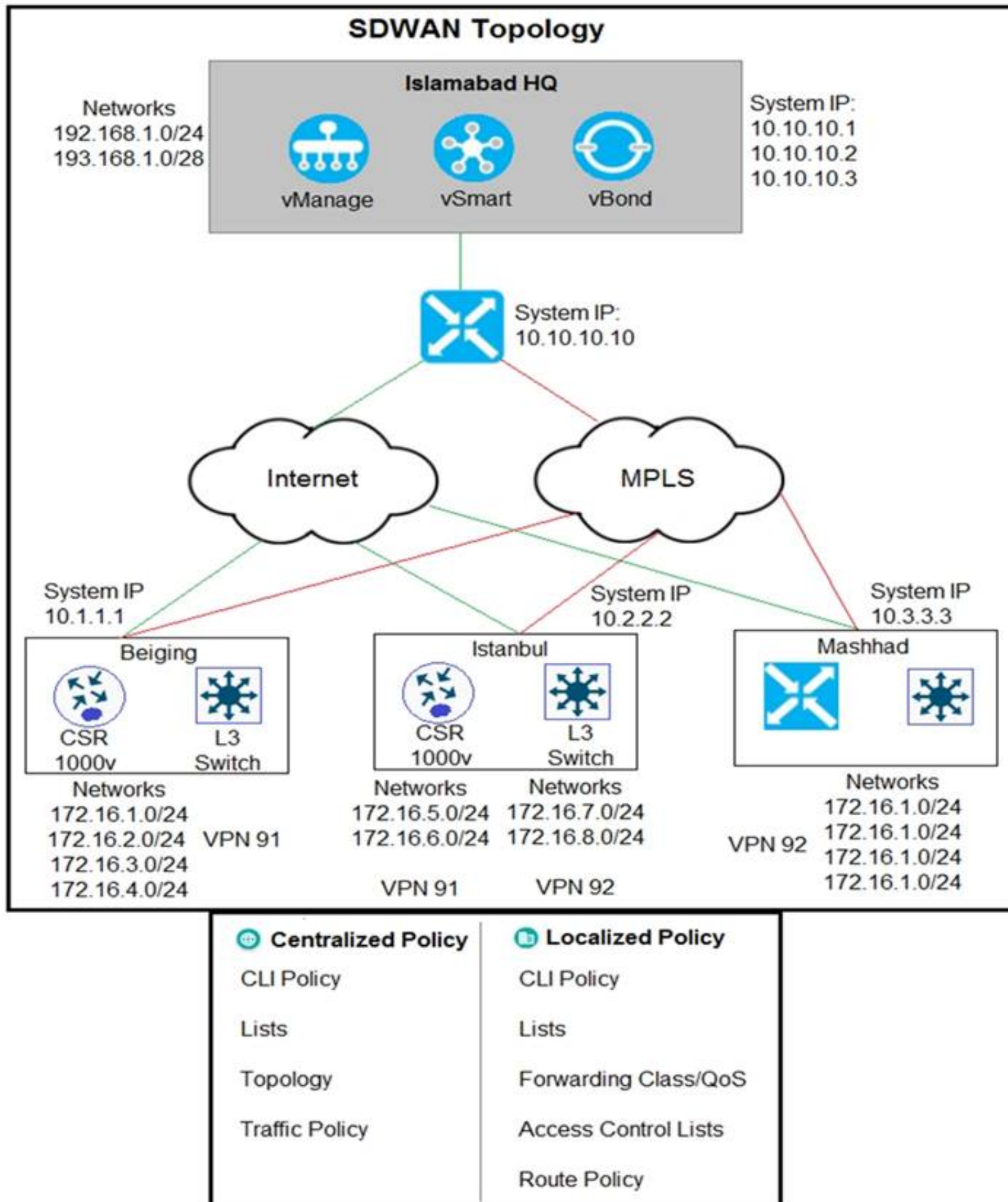
In which file format is a critical severity report downloaded from the MONITOR | ALARM tab in the vManage GUI?

- A. .txt
- B. .pdf
- C. .csv
- D. .xlsx

**Answer:** C

**NEW QUESTION 177**

Refer to the exhibit



The Cisco SD-WAN network is configured with a default full-mesh topology. Islamabad HQ and Islamabad WAN Edges must be used as the hub sites. Hub sites MPLS TLOC must be preferred when forwarding FTP traffic based on a configured SLA class list. Which policy configuration does the network engineer use to call the SLA class and set the preferred color to MPLS?

- A. Localized Policy, Route Policy
- B. Centralized Policy, Traffic Policy
- C. Localized Policy, Forwarding Class
- D. Centralized Policy Topology

**Answer: B**

#### NEW QUESTION 180

Which alarm setting is configured to monitor serious events that affect but do not shut down, the operation of a network function?

- A. Minor
- B. Major
- C. Medium
- D. Critical

**Answer: B**

#### NEW QUESTION 185

How should the IP addresses be assigned for all members of a Cisco vManage cluster located in the same data center?

- A. in the same subnet
- B. in overlapping IPs
- C. in each controller with a /32 subnet
- D. in different subnets

Answer: A

#### NEW QUESTION 189

An engineer creates a data policy to prevent communication from the 172.20.21.0/24 network to the 172.20.41.0/24 network. Which configuration accomplishes this task?

- ☐ policy  
lists  
vpn-list VPN1  
vpn 1  
!  
data-prefix-list LosAngeles-Net1  
ip-prefix 172.20.21.0/24  
data-prefix-list Rome-Net1  
ip-prefix 172.20.41.0/24  
!  
data-policy FILTER-POLICY  
vpn-list VPN1  
sequence 1  
match  
source-data-prefix-list LosAngeles-Net1  
action drop  
!  
sequence 11  
match  
source-data-prefix-list Rome-Net1  
action drop  
!  
default-action accept

---

- ☐ policy  
lists  
vpn-list VPN1  
vpn 1  
!  
data-prefix-list LosAngeles-Net1  
ip-prefix 172.20.21.0/24  
data-prefix-list Rome-Net1  
ip-prefix 172.20.41.0/24  
!  
data-policy FILTER-POLICY  
vpn-list VPN1  
sequence 1  
match  
source-data-prefix-list LosAngeles-Net1  
destination-data-prefix-list Rome-Net1  
action drop  
!  
default-action accept
- ☐ policy  
lists  
vpn-list VPN1  
vpn 1  
!  
data-prefix-list LosAngeles-Net1  
ip-prefix 172.20.0.0/16  
data-prefix-list Rome-Net1  
ip-prefix 172.20.0.0/16  
!  
data-policy FILTER-POLICY  
vpn-list VPN1  
sequence 1  
match  
source-data-prefix-list LosAngeles-Net1  
destination-data-prefix-list Rome-Net1  
action drop  
!  
default-action accept



```

○ policy
  lists
    vpn-list VPN1
    vpn 1
  !
  data-prefix-list LosAngeles-Net1
  ip-prefix 172.20.21.0/24
  data-prefix-list Rome-Net1
  ip-prefix 172.20.41.0/24
  !
  data-policy FILTER-POLICY
  vpn-list VPN1
  sequence 1
  match
    source-data-prefix-list LosAngeles-Net1
    destination-data-prefix-list Rome-Net1
  action accept
  !
  default-action drop
  
```

- A. Option A
- B. Option B
- C. Option C
- D. Option D

**Answer:** B

#### NEW QUESTION 194

What is a benefit of the application aware firewall feature in the Cisco SD-WAN solution?

- A. application monitoring
- B. application malware protection
- C. application visibility
- D. control policy enforcement

**Answer:** C

#### Explanation:

<https://www.cisco.com/c/dam/en/us/td/docs/routers/sdwan/configuration/config-18-4.pdf#page=242>

The Application Firewall inspects and blocks traffic based on applications or application-family. This application-aware firewall feature provides the following benefits:

- Application visibility and granular control

#### NEW QUESTION 198

Which Cisco SD-WAN component the initial communication between WAN Edge devices to join the fabric?

- A. WAN Edge Router
- B. vSmart Controller
- C. vManage
- D. vBond Orchestrator

**Answer:** D

#### Explanation:

The Cisco vBond Orchestrator orchestrates the initial control connection between Cisco vSmart Controllers and vEdge routers. It creates DTLS tunnels to the Cisco vSmart Controllers and vEdge routers to authenticate each node that is requesting control plane connectivity. This authentication

#### NEW QUESTION 200

After deploying Cisco SD-WAN the company realized that by default, all sites built direct IPsec VPN tunnels to each other. In their previous topology all spoke sites used the head office as their next hop for the LAN segment that belongs to network 40.0.0.0/16. The company wants to deploy its previous policy, which allows the 40.0.0.0/16 network that originates at the hub to advertise to the spokes. Which configuration meets the requirement?

A)

**Manage Preference and Prefix Lists**

Choose hub preference and add prefix lists as desired.

☐ All hubs are equal (All Spokes Sites connect to all Hubs) ☒ Advertise Hub TLOCs Hub\_TLOCs x

Spoke Sites	Associated Hub Sites	Prefix Lists (Optional)
Hub	= Spokes	LAN_Segment x

↑↓ Drag & drop to reorder

B)

**Manage Preference and Prefix Lists**

Choose hub preference and add prefix lists as desired.

☒ All hubs are equal (All Spokes Sites connect to all Hubs) ☐ Advertise Hub TLOCs

Spoke Sites	Associated Hub Sites	Prefix Lists (Optional)
Spokes	Hub	LAN_Segment x

C)

**Manage Preference and Prefix Lists**

Choose hub preference and add prefix lists as desired.

☐ All hubs are equal (All Spokes Sites connect to all Hubs) ☒ Advertise Hub TLOCs Hub\_TLOCs x

Spoke Sites	Associated Hub Sites	Prefix Lists (Optional)
Spokes	= Hub	LAN_Segment x

↑↓ Drag & drop to reorder

D)

**Choose hub preference and add prefix lists as desired.**

☐ All hubs are equal (All Spokes Sites connect to all Hubs) ☒ Advertise Hub TLOCs Hub\_TLOCs x

Spoke Sites	Associated Hub Sites	Prefix Lists (Optional)
Spokes	= Hub	Select one or more prefix lists

↑↓ Drag & drop to reorder

- A. Option A
- B. Option B
- C. Option C
- D. Option D

**Answer: D**

#### NEW QUESTION 205

Which Cisco SD-WAN component facilitates the initial communication between WAN Edge devices to join the fabric?

- A. vSmart Controller
- B. WAN Edge Router
- C. vManage
- D. vBond Orchestrator

**Answer: D**

#### NEW QUESTION 209

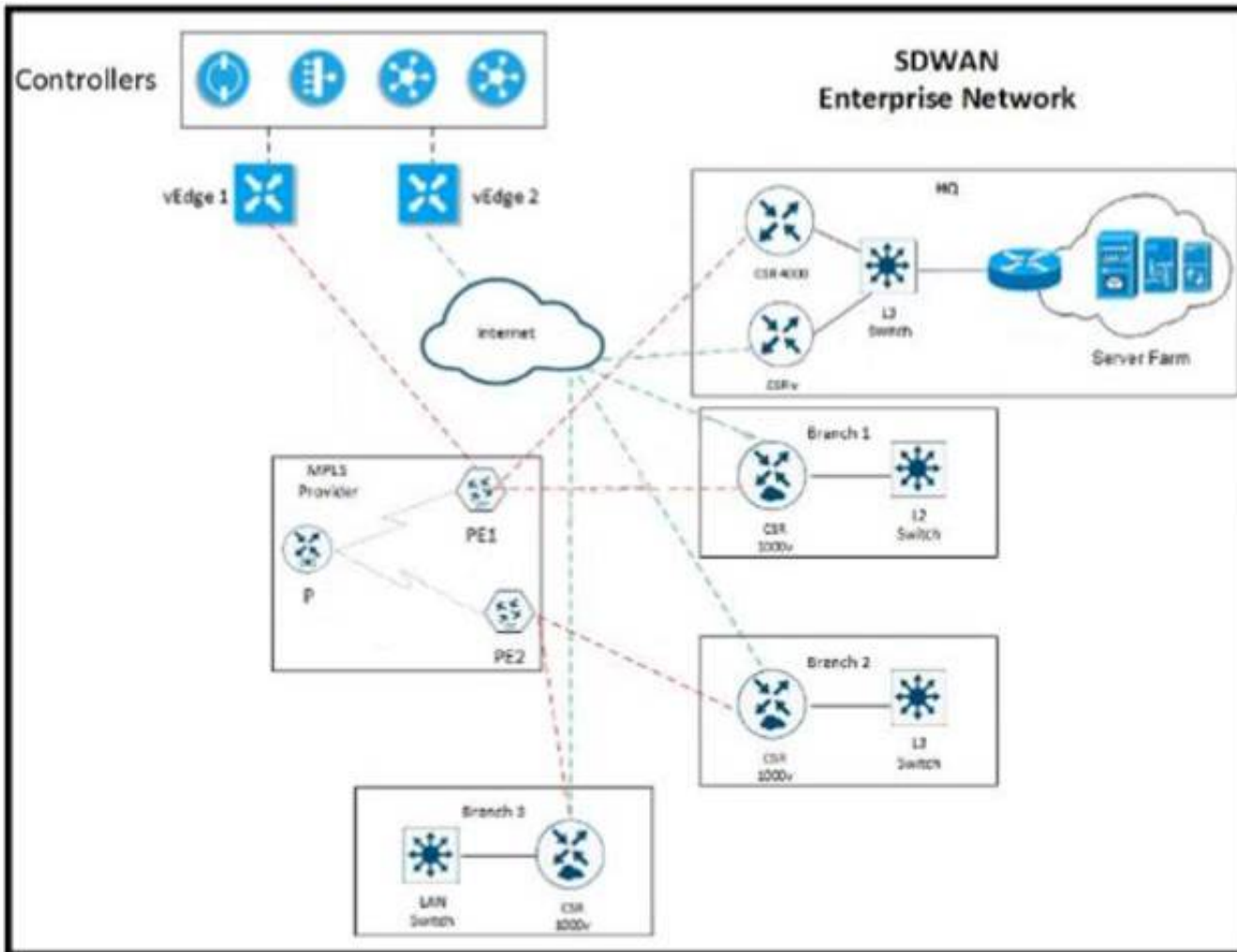
Which command on a WAN Edge device displays the information about the colors present in the fabric that are learned from vSmart via OMP?

- A. show omp tlocs
- B. show omp sessions
- C. show omp peers
- D. show omp route

**Answer:** A

**NEW QUESTION 210**

Refer to the exhibit



The network team must configure E1 GRP peering at HQ with devices in the service VPN connected to WAN Edge CSRv. CSRv is currently configured with

```
viptela-system:system
device-model vedge-cloud
host-nam CSRv
location CA
system-ip 10.4.4.4
domain-id 1
site-id 1
organization-name ABC
clock timezone US/Newyork
vbond 10.10.0.1 port 12346
```

```
omp
no shutdown
graceful-restart
```

Which configuration on the WAN Edge meets the requirement?

A)

```
vpn 0
interface ge0/0
description "Internet Circuit"
ip address 209.165.200.229/30
tunnel-interface
encapsulation ipsec
color public-internet
allow-service all

router
eigrp
address-family ipv4-unicast
maximum-path paths 4
network 10.0.0.0/28
redistribute omp

vpn 512
interface eth0
shutdown
```

B)



```
vpn 0
interface ge0/0
description "Internet Circuit"
ip address 209.165.200.229/30
tunnel-interface
encapsulation ipsec
color public-internet
allow-service all

router
eigrp
address-family ipv4-unicast
maximum-path paths 4
network 10.0.0.0/28
redistribute omp

vpn 512
interface eth0
shutdown
```

C)

```
vpn 0
interface ge0/0
description "Internet Circuit"
ip address 209.165.200.229/30
tunnel-interface
encapsulation ipsec
color public-internet
allow-service all

vpn 1
router
eigrp
address-family ipv4-unicast
maximum-path paths 4
network 10.0.0.0/28
redistribute omp

interface ge0/1
ip address 10.0.0.1/28

vpn 512
interface eth0
shutdown
```

D)

```
vpn 0
vpn 1
interface ge0/0
description "Internet Circuit"
ip address 209.165.200.229/30
tunnel-interface
encapsulation ipsec
color public-internet
allow-service all

router
eigrp
address-family ipv4-unicast
maximum-path paths 4
network 10.0.0.0/28
redistribute omp

interface ge0/1
ip address 10.0.0.1/28

vpn 512
interface eth0
shutdown
```

- A. Option A
- B. Option B
- C. Option C
- D. Option D

Answer: C

#### NEW QUESTION 213

An administrator is configuring the severity level on the vManage NMS for events that indicate that an action must be taken immediately. Which severity level must be configured?

- A. warning
- B. error
- C. critical
- D. alert

Answer: D

Explanation:

- Alert— Action must be taken immediately (corresponds to syslog severity 1).



#### NEW QUESTION 217

Drag and drop the security terminologies from the left onto the PCI-compliant network features and devices on the right.

transport security	IPS
perimeter security	zone-based firewall and VPNs
segmentation	IPsec VPN
attack prevention	firewall

- A. Mastered
- B. Not Mastered

**Answer:** A

#### Explanation:

Graphical user interface, application Description automatically generated

#### NEW QUESTION 222

What is an attribute of TLOC'?

- A. encryption
- B. local preference
- C. tag
- D. service

**Answer:** C

#### NEW QUESTION 227

Which type of policy must be applied on a WAN Edge application-aware firewall to control traffic between two or more VPNs?

- A. service-insertion policy
- B. data policy
- C. firewall policy
- D. control policy

**Answer:** C

#### NEW QUESTION 232

Which value is verified in the certificates to confirm the identity of the physical WAN Edge device?

- A. Serial Number
- B. OTP
- C. System-IP
- D. Chassis-ID

**Answer:** A

#### Explanation:

<https://www.cisco.com/c/en/us/td/docs/routers/sdwan/configuration/sdwan-xe-gs-book/manage-certificates.html>

#### NEW QUESTION 234

Which vBond system configuration under VPN 0 allows for a routable public IP address even if the DNS name, hostname, or IP address of the vBond orchestrator are omitted?

- A. local
- B. vbond-only
- C. dns-name
- D. WAN

**Answer:** A

#### NEW QUESTION 239

An enterprise has several sites with multiple VPNs that are isolated from each other A new requirement came where users in VPN 73 must be able to talk to users in VPN 50 Which configuration meets this requirement?

- ☐ policy  
control-policy Route\_Leaking  
sequence 1  
match route  
vpn-list VPN\_73  
prefix-list \_AnyIpv4PrefixList  
action accept  
export-to vpn-list VPN\_50  
sequence 11  
match route  
vpn-list VPN\_50  
prefix-list \_AnyIpv4PrefixList  
action accept  
export-to vpn-list VPN\_73  
default-action accept
- ☐ policy  
control-policy Route\_Leaking  
sequence 1  
match route  
VPN\_73  
prefix-list \_AnyIpv4PrefixList  
export-to VPN\_50  
sequence 11  
match route  
VPN\_50  
prefix-list \_AnyIpv4PrefixList  
export-to VPN\_73  
default-action accept
- ☐ policy  
control-policy Route\_Leaking  
sequence 1  
match route  
VPN\_ALL  
prefix-list \_AnyIpv4PrefixList  
action accept  
export-to VPN\_ALL
- ☐ policy  
control-policy Route\_Leaking  
sequence 1  
match route  
VPN\_50 VPN\_73  
prefix-list \_AnyIpv4PrefixList  
action accept  
export-to VPN\_73 VPN\_50

- A. Option A  
B. Option B  
C. Option C  
D. Option D

Answer: A

#### NEW QUESTION 244

An enterprise deployed a Cisco SD-WAN solution with hub-and-spoke topology using MPLS as the preferred network over the Internet. A network engineer must implement an application-aware routing policy to allow ICMP traffic to be load-balanced over both the available links. Which configuration meets the requirement?  
A)

```
app-route-policy _VPN_10_AAR
vpn-list VPN_50
sequence 21
match
app-list ICMP
source-ip 0.0.0.0/0
!
action
sla-class ICMP_SLA preferred-color public-internet
sla-class ICMP_SLA preferred-color mpls
```

B)

```
app-route-policy _VPN_10_AAR
vpn-list VPN_50
sequence 21
match
app-list ICMP
source-ip 0.0.0.0/0
!
action
sla-class ICMP_SLA
```

C)

```
app-route-policy _VPN_10_AAR
vpn-list VPN_50
sequence 21
match
app-list ICMP
source-ip 0.0.0.0/0
!
action
sla-class ICMP_SLA preferred-color mpls
backup-sla-preferred-color public-internet
```

D)

```
app-route-policy _VPN_10_AAR
vpn-list VPN_50
sequence 21
match
app-list ICMP
source-ip 0.0.0.0/0
!
action
sla-class ICMP_SLA preferred-color mpls public-internet
```

- A. Option A
- B. Option B
- C. Option C
- D. Option D

Answer: C

NEW QUESTION 246

At which layer does the application-aware firewall block applications on a WAN Edge?

- A. 3
- B. 7
- C. 5
- D. 2

Answer: B

NEW QUESTION 247

Drag and drop the actions from the left into the correct sequence on the right to create a data policy to direct traffic to the Internet exit.

Apply data policy	Step 1
Enable NAT functionality	Step 2
Create centralized data policy	Step 3
Identify VPN and match criteria	Step 4

- A. Mastered
- B. Not Mastered

Answer: A

Explanation:

Step 1 – Enable NAT Functionality Step 2 – Create centralized data policy  
Step 3 – Identify VPN and match criteria Step 4 – Apply data policy

NEW QUESTION 252

Which type of connection is created between a host VNet and a transit VNet when configuring Cloud OnRamp for IaaS?

- A. Azure private endpoint
- B. GRE tunnel
- C. IPsec tunnel
- D. Azure peer link

**Answer: C**

#### NEW QUESTION 253

Refer to the exhibit

```
vpn 1
service netsvc1 interface ipsec1

from-vsmart data-policy _1_ServiceIsectionIPSec
direction from-service
vpn-list 1
sequence 1
match
destination-ip 1.1.1.1/32
action accept
set
service netsvc1
default-action accept
from-vsmart lists vpn-list 1
vpn 1
```

Which command allows traffic through the IPsec tunnel configured in VPN 0?

- A. service local
- B. service FW address 1.1.1.1
- C. service netsvc1 vpn 1
- D. service netsvc1 address 1.1.1.1

**Answer: B**

#### Explanation:

<https://www.cisco.com/c/en/us/td/docs/routers/sdwan/configuration/policies/vedge-20-x/policies-book/service-c>

#### NEW QUESTION 257

In Cisco SD-WAN, what protocol is used for control connections between SD-WAN devices?

- A. DTLS
- B. OMP
- C. BGP
- D. OSPF

**Answer: A**

#### Explanation:

<https://www.cisco.com/c/en/us/td/docs/routers/sdwan/configuration/security/vedge/security-book/security-overv>

#### NEW QUESTION 258

Which protocol runs between the vSmart controllers and WAN Edge routers when the vSmart controller acts like a route reflector?

- A. OMP outside the DTLS/TLS control connection
- B. BGP inside the DTLS/TLS
- C. IPsec inside the DTLS/TLS control connection
- D. OMP inside the DTLS/TLS control connection

**Answer: D**

#### NEW QUESTION 259

An engineer wants to track tunnel characteristics within an SLA-based policy for convergence. Which policy configuration will achieve this goal?

- A. App-route policy
- B. VPN membership policy
- C. Control policy
- D. Data policy

**Answer: A**

#### Explanation:

An application-aware routing policy matches applications with an SLA, that is, with the data plane tunnel performance characteristics that are necessary to transmit the applications' data traffic. The primary purpose of application-aware routing policy is to optimize the path for data traffic being transmitted by Cisco SD-WAN devices.



**NEW QUESTION 261**

Which website allows access to visualize the geography screen from vManager using the internet?

- A. \*.opcnstreetmaps.org
- B. \*.fullstreetmaps.org
- C. \*.callstreelmaps.org
- D. \*.globaistreetmaps.org

**Answer:** A

**NEW QUESTION 264**

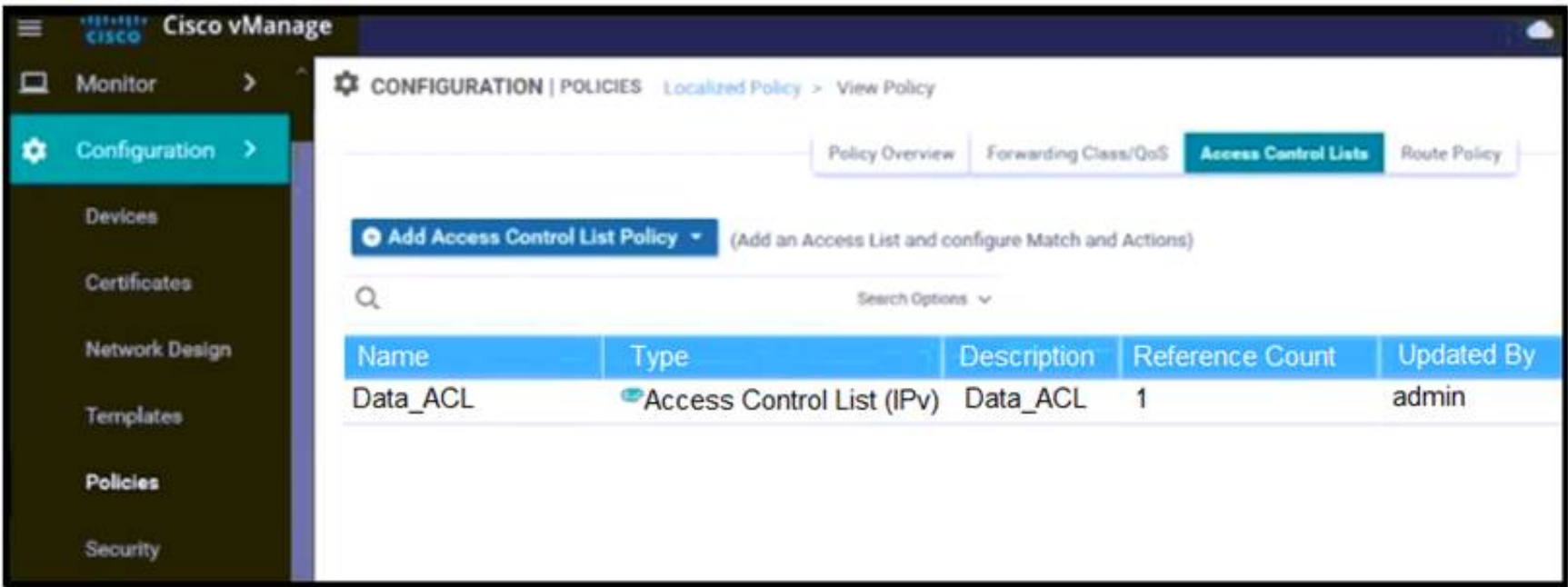
An engineer is applying QoS policy for the transport-side tunnel interfaces to enable scheduling and shaping for a WAN Edge cloud router Which command accomplishes the task?

- A. cloud-qos-service-side
- B. qos-scheduler QOS\_0
- C. qos-map QOS
- D. rewrite-rule QOS-REWRITE

**Answer:** C

**NEW QUESTION 269**

Refer to the exhibit.



An engineer must block FTP traffic coming in from a particular Service VPN on a WAN Edge device Which set of steps achieves this goal?

- A. Create a localized policy and add it to (he interface feature template
- B. Create a localized policy add it to the device template and add an ACL to the interface feature template
- C. Create a prefix tat, add it to the localized policy and add it to the interface feature template
- D. Create a localized policy add it to VPN template and add an ACL to the interface feature template

**Answer:** C

**NEW QUESTION 271**

Drag and drop the REST API calls from the left onto the functions on the right.

PUT	Retrieve or read.
GET	Update an object.
POST	Create an object.
DELETE	Remove an object.

- A. Mastered
- B. Not Mastered

**Answer:** A

**Explanation:**

- **GET:** Get resource from the server.
- **POST:** Create resource to the server.
- **PATCH or PUT:** Update existing resource on the server.
- **DELETE:** Delete existing resource from the server.

#### NEW QUESTION 273

Which two REST API functions are performed for Cisco devices in an overlay network? (Choose two)

- A. distributing a Snort image among devices
- B. attaching a device configuration template
- C. managing connections for smart licensing
- D. monitoring device certificates
- E. querying a device and aggregating statistics

**Answer:** BD

#### NEW QUESTION 277

Which protocol is used to measure loss latency, Jitter, and liveliness of the tunnel between WAN Edge router peers?

- A. OMP
- B. IP SLA
- C. NetFlow
- D. BFD

**Answer:** D

#### NEW QUESTION 278

Which two performance data details are provided by Cisco SO-WAN vAnalytics? (Choose two)

- A. jitter loss and latency for data tunnels
- B. application quality of experience score from zero to ten
- C. detail on total cost of ownership for the fabric
- D. certificate authority status (health and expiration dates) for all controllers
- E. view devices connected to a vManage NMS

**Answer:** AB

#### NEW QUESTION 283

Which Cisco SD-WAN WAN Edge platform supports LTE and Wi-Fi?

- A. vEdge2000
- B. ASR1001
- C. CSR 1000v
- D. ISR 1101

**Answer:** D

#### NEW QUESTION 284

An engineer must use data prefixes to configure centralized data policies using the vManage policy configuration wizard. What is the first step to accomplish this task?

- A. Create groups of interest
- B. Configure network topology.
- C. Configure traffic rules.
- D. Apply policies to sites and VPNs.

**Answer:** A

#### NEW QUESTION 288

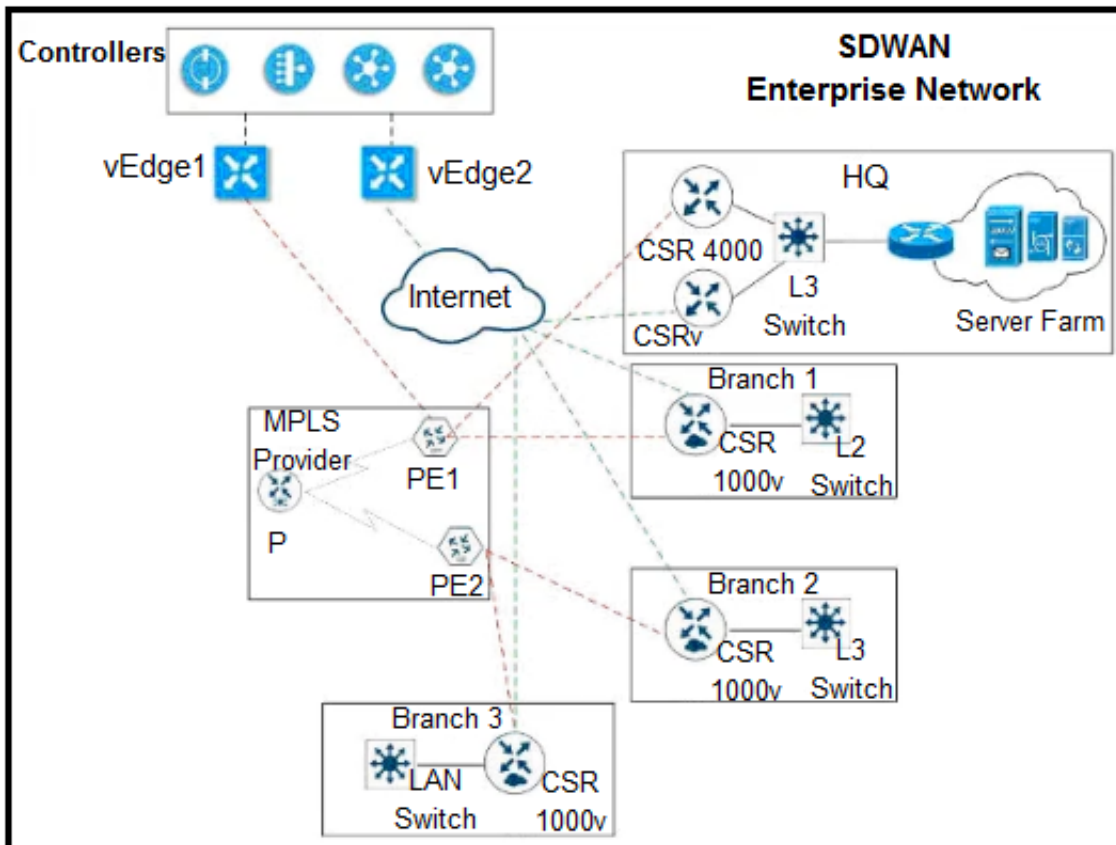
Which command verifies a policy that has been pushed to the vEdge router?

- A. vEdge# show running-config data policy
- B. vEdge# show policy from-vsmart
- C. vSmart# show running-config policy
- D. vSmart# show running-config apply-policy

**Answer:** B

#### NEW QUESTION 291

Refer to the exhibit



The network team must configure EIGRP peering at HQ with devices in the service VPN connected to WAN Edge CSRv. CSRv is currently configured with

```
viptela-system:system
device-model      vedge-cloud
host-nam         CSRv
location         CA
system-ip        10.4.4.4
domain-id        1
site-id          1
organization-name ABC
clock timezone   US/Newyork
vbond 10.10.0.1 port 12346
```

```
omp
no shutdown
graceful-restart
```

Which configuration on the WAN Edge meets the requirement?

Which configuration on the WAN Edge meets the requiremnet

A)

```

○ vpn 0
  router
    eigrp
      address-family ipv4-unicast
        maximum-paths 4
        network 10.0.0.0/28
        redistribute omp
  interface ge0/0
    description "Internet Circuit"
    ip address 209.165.200.229/30
    tunnel-interface
      encapsulation ipsec
      color public-internet
      allow-service all
  vpn 512
  interface eth0
    shutdown

```

B)

```

○ vpn 0
  vpn 1
  interface ge0/0
    description "Internet Circuit"
    ip address 209.165.200.229/30
    tunnel-interface
    encapsulation ipsec
    color public-internet
    allow-service all

  router
    eigrp
    address-family ipv4-unicast
    maximum-path paths 4
    network 10.0.0.0/28
    redistribute omp

  interface ge0/1
    ip address 10.0.0.1/28

  vpn 512
  interface eth0
    shutdown
  
```

C)

```

○ vpn 0
  interface ge0/0
    description "Internet Circuit"
    ip address 209.165.200.229/30
    tunnel-interface
    encapsulation ipsec
    color public-internet
    allow-service all

  vpn 1
  router
    eigrp
    address-family ipv4-unicast
    maximum-path paths 4
    network 10.0.0.0/28
    redistribute omp

  interface ge0/1
    ip address 10.0.0.1/28

  vpn 512
  interface eth0
    shutdown
  
```

D)

```

○ vpn 0
  interface ge0/0
    description "Internet Circuit"
    ip address 209.165.200.229/30
    tunnel-interface
    encapsulation ipsec
    color public-internet
    allow-service all

  router
    eigrp
    address-family ipv4-unicast
    maximum-path paths 4
    network 10.0.0.0/28
    redistribute omp

  vpn 512
  interface eth0
    shutdown
  
```

- A. Option A
- B. Option B
- C. Option C
- D. Option D

Answer: C

#### NEW QUESTION 294

Refer to the exhibit.



#Branch1-Edge1	#Branch1-Edge2
vpn 0	vpn 0
!	...
interface ge0/1	interface ge0/2
ip address	no shutdown
172.17.113.241/28	!
tunnel-interface	interface ge0/2.704
encapsulation ipsec	ip address 10.113.4.1/30
color mpls restrict	tunnel-interface
!	encapsulation ipsec
no shutdown	color mpls restrict
!	mtu 1496
interface ge0/2.704	no shutdown
ip address 10.113.4.2/30	!
tloc-extension ge0/2	ip route 0.0.0.0/0 10.113.4.2

Which configuration change is needed to configure the tloc-extension on Branch1-Edge1?

- A. interface ge0/2.704  
ip address 10.113.4.1/30  
tunnel-interface  
encapsulation ipsec  
color mpls restrict  
no shutdown
- B. interface ge0/2.704  
ip address 10.113.4.2/30  
mtu 1496  
tloc-extension ge0/1
- C. interface ge0/2.704  
ip address 10.113.4.2/30  
mtu 1496  
tloc-extension ge0/2
- D. interface ge0/2.704  
ip address 10.113.4.1/30  
tunnel-interface  
encapsulation ipsec  
color mpls restrict  
mtu 1496  
tloc-extension ge0/2  
no shutdown

- A. Option A
- B. Option B
- C. Option C
- D. Option D

Answer: B

#### NEW QUESTION 298

A vEdge platform is sending VRRP advertisement messages every 10 seconds. Which value configures the router back to the default timer?

- A. 2 seconds
- B. 3 seconds
- C. 1 second
- D. 5 seconds

Answer: C

**NEW QUESTION 299**

Refer to the exhibit,

```
Site 1:
vpn 10
  service FW address 1.1.1.1

On vSmart
policy
lists
  site-list firewall-sites
  site-id 1

apply-policy
  site-list firewall-sites control-policy firewall-service out
```

Which configuration routes Site 2 through the firewall in Site 1?

- ☒ control-policy firewall-service  
sequence 10  
match route  
site-id 2  
action accept  
set service local  
default-action accept
- ☐ On vSmart  
control-policy firewall-service  
sequence 10  
match route  
site-id 2  
action accept  
set  
service FW vpn 10  
default-action accept
- ☐ On vSmart  
control-policy firewall-service  
sequence 10  
match route  
site-id 2  
action accept  
set  
service FW vpn 10  
service local  
default-action accept
- ☐ On vSmart  
control-policy firewall-service  
sequence 10  
match route  
site-id 2  
action accept  
set service FW vpn 10  
default-action accept

- A. Option A
- B. Option B
- C. Option C
- D. Option D

Answer: D

**Explanation:**

<https://www.cisco.com/c/en/us/td/docs/routers/sdwan/configuration/policies/vedge-20-x/policies-book/service-c>

Here is the configuration procedure:

1. On the hub router, provision the firewall service, specifying the IP address of the firewall device. With this configuration, OMP on the hub router advertises one service route to the Cisco vSmart Controller. The service route contains a number of properties that identify the location of the firewall, including the TLOC of the hub router and a service label of svc-id-1, which identifies the service type as a firewall. (As mentioned above, before advertising the route, the device ensures that the firewall's IP address can be resolved locally.)

```
vpn 10
  service FW address 1.1.1.1
```

2. On the Cisco vSmart Controller, configure a control policy that redirects data traffic traveling from Site 1 to Site 2 through the firewall. Then, also on the Cisco vSmart Controller, apply this policy to Site 1.

```
policy
  lists
    site-list firewall-sites
      site-id 1
  control-policy firewall-service
    sequence 10
      match route
        site-id 2
      action accept
      set service FW vpn 10
    default-action accept
  apply-policy
    site-list firewall-sites control-policy firewall-service out
```

#### NEW QUESTION 304

In which Cisco SD-WAN deployment scenario does Cisco Umbrella SIG deliver the most value?

- A. when a centralized Internet breakout solution is implemented
- B. when resource-intensive security operations are offloaded from entry-level WAN Edge devices
- C. when the identity of several WAN Edge devices is verified throughout the network throughout the network

**Answer: B**

#### NEW QUESTION 309

Which protocol is used by the REST API to communicate with network services in the Cisco SD-WAN network?

- A. SSL
- B. HTTP
- C. IPsec
- D. SSM

**Answer: B**

#### NEW QUESTION 310

What is the result during a WAN Edge software upgrade process if the version of the WAN Edge software is higher than the one running on a controller device?

- A. The upgrade button is greyed out
- B. The upgrade proceeds with no warning message.
- C. The upgrade fails with a warning message
- D. The upgrade proceeds with a warning message

**Answer: D**

#### NEW QUESTION 315


How are custom application ports monitored in Cisco SD-WAN controllers?

- A. Customers add custom application ports in vAnalytics and vManage.
- B. Customers add custom application ports in vAnalytics and vSmart.
- C. Cisco adds custom application ports in vAnalytics and vManage.
- D. Cisco adds custom application ports in vAnalytics and vSmart.

**Answer: A**

#### NEW QUESTION 319

Refer to the exhibit.

Hostname	State	System IP	Reachability	Site ID	Device Model	BFD	Control
 BR1-VEGE1		10.3.0.1	reachable	300	vEdge Cloud	8	5

What does the BFD value of 8 represent?

- A. number of BFD sessions
- B. hello timer of BFD session
- C. poll-interval of BFD session.
- D. dead timer of BFD session

**Answer:** A

**NEW QUESTION 321**

Which protocol is configured on tunnels by default to detect loss, latency, jitter, and path failures in Cisco SD-WAN?

- A. TLS
- B. BFD
- C. OMP
- D. BGP

**Answer:** B

**NEW QUESTION 325**

A policy is created to influence routing path in the network using a group of prefixes. What policy application will achieve this goal when applied to a site List?

- A. vpn-membership policy
- B. cflowd-template
- C. app-route policy
- D. control-policy

**Answer:** D

**NEW QUESTION 329**

An engineer is configuring a list that matches all IP prefixes with lengths from /1 to /16 in a centralized control policy. Which list accomplishes this task?

- A. 0.0.0.0/1 le 16
- B. 0.0.0.0/0 ge 1
- C. 0.0.0.0/0 le 16
- D. 0.0.0.0/16 ge 1

**Answer:** A

**NEW QUESTION 333**

In the Cisco SD\_WAN solution, vSmart controller is responsible for which two actions? (Choose two.)

- A. Distribute crypto key information among vEdge routers
- B. Configure and monitor vEdge routers.
- C. Authenticate and authorize vEdge routers.
- D. Distribute the IP address from DHCP server to vEdge routers.
- E. Distribute route and policy information via OMP.

**Answer:** AE

**Explanation:**

vSmart controller - This software-based component is responsible for the centralized control plane of the SD-WAN network. It maintains a secure connection to each WAN Edge router and distributes routes and policy information via the Overlay Management Protocol (OMP), acting as a route reflector. It also orchestrates the secure data plane connectivity between the WAN Edge routers by reflecting crypto key information originating from WAN Edge routers, allowing for a very scalable, IKE-less architecture.

**NEW QUESTION 334**

An engineer builds a three-node vManage cluster and then realizes that multiple nodes are unnecessary for the size of the company. How should the engineer revert the setup to a single vManage?

- A. Remove two node from the three-node vManage duster
- B. Use the cluster conversion utility to convert to standalone vManage
- C. Restore vManage from the backup VM snapshot
- D. Leave the duster as & and point to one vManage

**Answer:** B

**NEW QUESTION 338**

Refer to the exhibit.



<b>vManage</b>  system system-ip 10.11.11.1 host-name vManage site-id 1 clock timezone Europe/London vbond 11.1.1.3 organization-name Cisco.com Vpn 0 Interface eth1 Ip address 11.1.1.1/24 No shut Tunnel-interface Allow-service all Ip route 0.0.0.0/0 11.1.1.254	<b>vSmart</b>  system system-ip 10.11.11.1 host-name vSmart site-id 1 clock timezone Europe/Rome vbond 11.1.1.3 organization-name Cisco.com Vpn 0 Interface eth1 Ip address 11.1.1.2/24 No shut Tunnel-interface Allow-service all Ip route 0.0.0.0/0 11.1.1.254
<b>vBond</b>  system system-ip 10.11.11.3 host-name vManage site-id 1 clock timezone Europe/London vbond 11.1.1.1 local organization-name Cisco.com Vpn 0 Interface ge0/0 Ip address 11.1.1.3/28 No shut Tunnel-interface Encapsulation ipsec Allow-service all Ip route 0.0.0.0/0 11.1.1.254	

vManage and vSmart have an issue establishing a connection to vBond. Which configuration resolves the issue?

- A. Configure the tunnel interface on all three controllers with a color of transport.
- B. Change the timezone on the vSmart to Europe/London.
- C. Configure the (11.1.1.X/24) IP addresses on the elhO interfaces on vManage and vSmart.
- D. Reconfigure the system-ip parameter on vSmart to 11.1.1.2.

Answer: B

NEW QUESTION 340

Which two products that perform lifecycle management for virtual instances are supported by WAN Edge cloud routers? (Choose two.)

- A. OpenStack
- B. AWS
- C. VMware vCenter
- D. Azure
- E. IBM Cloud

Answer: AC

Explanation:

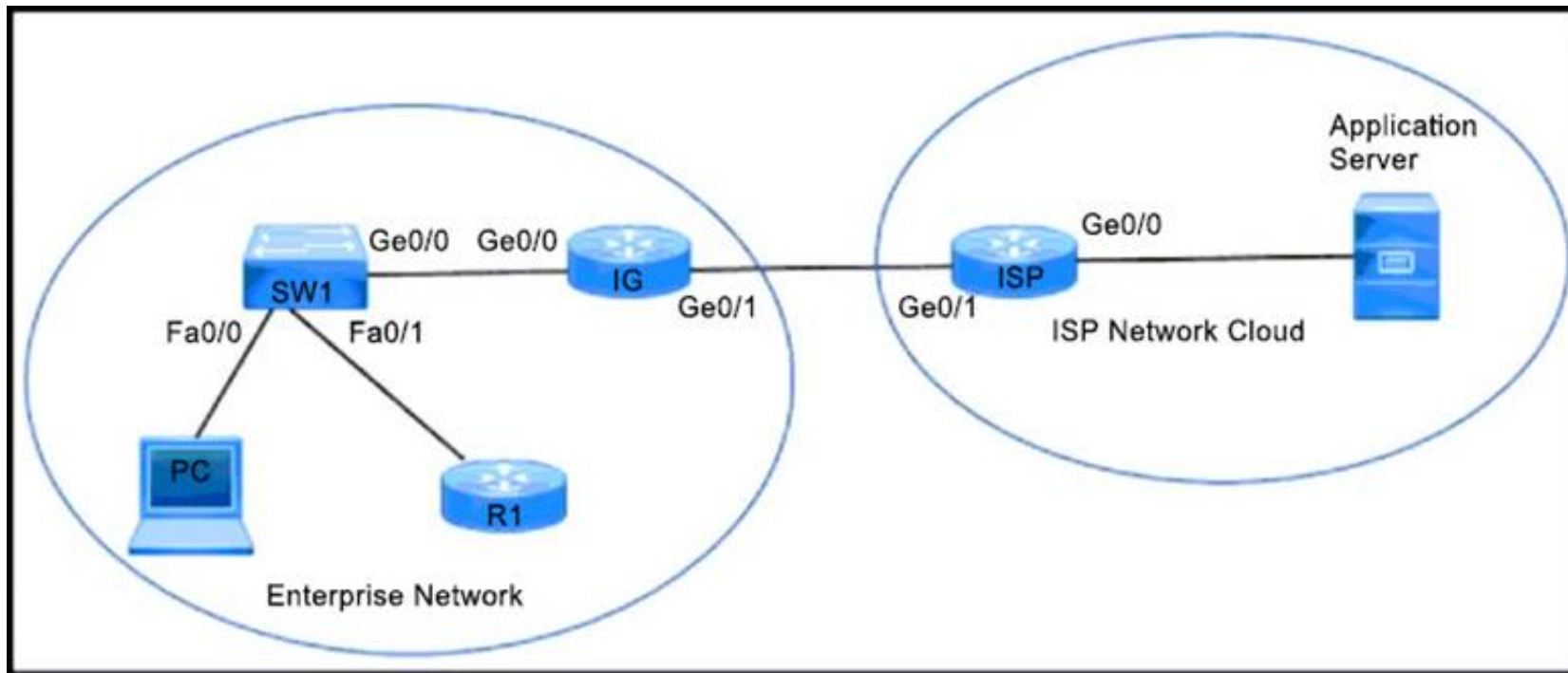
<https://www.cisco.com/c/en/us/solutions/collateral/enterprise-networks/sd-wan/nb-07-cloud-router-data-sheet-ct>

The following figure illustrates Cisco vEdge Cloud router solution elements.



NEW QUESTION 344

Refer to the exhibit.



An enterprise network is connected with an ISP network on an 80 Mbps bandwidth link. The network operation team observes 100 Mbps traffic on the 1Gig-ISP link during peak hours. Which configuration provides bandwidth control to avoid traffic congestion during peak hours?

A)

```
policy-map CUS_PMAP
class CUS_CMAP
  police 80000000 300000
!
interface gigabitethernet 0/0
description *** TO SW ***
ip address 10.0.10.5 255.255.255.0
service-policy input CUS_PMAPd
```

B)

```
policy-map SHAPE_MAP
class class-default
  shape average 80000000
!
interface gigabitethernet 0/1
description *** TO ISP ***
ip address 10.0.20.5 255.255.255.0
service-policy output SHAPE_MAP
```

C)

```
policy-map CUS_PMAP
class CUS_CMAP
  police 80000000 300000
!
interface gigabitethernet 0/0
description *** TO ISP ***
ip address 10.0.20.1 255.255.255.0
service-policy input CUS_PMAP
```

D)

```
policy-map SHAPE_MAP
class class-default
  shape average 8000000
!
interface gigabitethernet 0/1
description *** TO IG rack B455:A882:G718 ***
ip address 10.0.20.5 255.255.255.0
```

- A. Option A
- B. Option B
- C. Option C
- D. Option D

**Answer: B**

#### NEW QUESTION 348

What are two attributes of vRoute? (Choose two)

- A. originator
- B. service
- C. encapsulation
- D. carrier
- E. domain ID

**Answer: AB**

#### NEW QUESTION 352

What are the two functions of vSmart? (Choose two)

- A. It orchestrates connectivity between WAN Edge routers using policies to create network topology
- B. It ensures that valid WAN Edge routers can build the control pane connectivity
- C. It uses TLOCs to uniquely identify the circuit interface to control plane and data plane information
- D. It validates that the WAN Edge trying to join the overlay is authorized to join.
- E. It builds control plane connections with WAN Edge routers using ILS or ULS

**Answer:** DE

#### NEW QUESTION 357

An engineer must deploy a QoS policy with these requirements:

- policy name: App-police
- police rate: 1000000
- burst: 1000000
- exceed: drop

Which configuration meets the requirements?

- A. 

```
vpn-list VPN10
sequence 1
match
app-list youtube
action accept
set
policer App-police
```
- B. 

```
policy
data-policy policy-name
vpn-list 10
sequence 1
action accept
set
policer App-police
```
- C. 

```
vpn 10
interface ge0/0/0
set
policer App-police in
default action accept
```
- D. 

```
policy
action accept
set
policer App-police
```

- A. Option A
- B. Option B
- C. Option C
- D. Option D

**Answer:** B

#### NEW QUESTION 361

If Smart Account Sync is not used, which Cisco SD-WAN component is used to upload an authorized serial number file?

- A. WAN Edge
- B. vManage
- C. vSmart
- D. vBond

**Answer:** B

#### Explanation:

[https://sdwan-docs.cisco.com/Product\\_Documentation/vManage\\_Help/Release\\_18.3/Configuration/Devices](https://sdwan-docs.cisco.com/Product_Documentation/vManage_Help/Release_18.3/Configuration/Devices)

#### NEW QUESTION 366

An engineer configures policing with a rate of 125 Bps and a burst rate of 8000 bits, as shown here:

```
policy
policer p1
rate
burst
exceed drop
!
access-list acl1
sequence 1
match
source-ip 2.2.0.0/16
destination-ip 10.1.1.0/24 100.1.1.0/24
destination-port 20 30
protocol 6 17 23
!
action accept
policer p1
!
default-action drop
!
vpn 1
interface ge0/4
description Policy ID: B413:A88D:76G7::4
ip address 10.20.24.15/24
no shutdown
access-list acl1 out
!
```








Which configuration completes this task?

- A. Configure 125 for rate and 1000 for burst.
- B. Configure 1000 for rate and 64000 for burst
- C. Configure 125 for rate and 8000 for burst
- D. Configure 1000 for rate and 1000 for burst

Answer: D

NEW QUESTION 368

Refer to the exhibit

Address Family	<div><div></div><div><input checked="" type="radio"/> On</div><div><input type="radio"/> Off</div></div>
Address Family	<div><div></div><div>ipv4-unicast </div></div>
Maximum Number of Prefixes	<div><div></div><div></div></div>
Route Policy In	<div><div></div><div><div><input type="radio"/> On</div><div><input checked="" type="radio"/> Off</div></div></div>
Route Policy Out	<div><div></div><div><input checked="" type="radio"/> On</div><div><input type="radio"/> Off</div></div>
Policy Name	<div><div></div><div>eBGP_Community_Policy</div></div>

The engineering must assign tags to 3 Of its 74 server networks as soon as they are advertised to peers These server network must not be advertised AS which configuration fulfil the requirement?  
A)



```
policy
route-policy eBGP_Community_Policy
sequence 1
match
address Community_Prefix
action accept
set
community 999:65000 no-advertise
default-action reject
lists
prefix-list Community_Prefix
ip-prefix 20.20.20.0/24
ip-prefix 21.21.21.0/24
ip-prefix 22.22.22.0/24
```

B)

```
policy
route-policy eBGP_Community_Policy
sequence 1
match
address Community_Prefix
action accept
set
community 999:65000 local-as
default-action reject
lists
prefix-list Community_Prefix
ip-prefix 20.20.20.0/24
ip-prefix 21.21.21.0/24
ip-prefix 22.22.22.0/24
```

C)

```
policy
route-policy eBGP_Community_Policy
sequence 1
match
address Community_Prefix
action accept
set
community 999:65000 no-export
default-action accept
lists
prefix-list Community_Prefix
ip-prefix 20.20.20.0/24
ip-prefix 21.21.21.0/24
ip-prefix 22.22.22.0/24
```

D)

```
policy
route-policy eBGP_Community_Policy
sequence 1
match
address Community_Prefix
action accept
set
community 999:65000 no-advertise
default-action accept
lists
prefix-list Community_Prefix
ip-prefix 20.20.20.0/24
ip-prefix 21.21.21.0/24
ip-prefix 22.22.22.0/24
```

- A. Option A
- B. Option B
- C. Option C
- D. Option D

Answer: D

#### NEW QUESTION 370

Drag and drop the steps from the left into the sequence on the right for a WAN Edge router after powering on for zero touch provisioning.

Router contacts a DNS service.	1
Router establishes a connection to vBond.	2
Router contacts a DHCP server.	3
Router connects to the ZTP server.	4

- A. Mastered
- B. Not Mastered

Answer: A

Explanation:

Router contacts a DNS service.	Router contacts a DHCP server.
Router establishes a connection to vBond.	Router contacts a DNS service.
Router contacts a DHCP server.	Router connects to the ZTP server.
Router connects to the ZTP server.	Router establishes a connection to vBond.

NEW QUESTION 375

What is a description of vManage NMS?

- A. It is accessible only from VPN 512 (the management VPN).
- B. A cluster requires device templates to be created on and attached to the same server
- C. It is a software process on a dedicated WAN Edge router in the network.
- D. A cluster consists of a minimum of two vManage NMSs

Answer: B

Explanation:

<https://www.cisco.com/c/en/us/td/docs/routers/sdwan/configuration/optimization-ha/vedge/network-optimization>

NEW QUESTION 377

How is a TLOC uniquely identified from a WAN Edge router to the SD-WAN transport network?

- A. system IP address
- B. VPN ID
- C. OMP
- D. SD-WAN site ID

Answer: A

NEW QUESTION 379

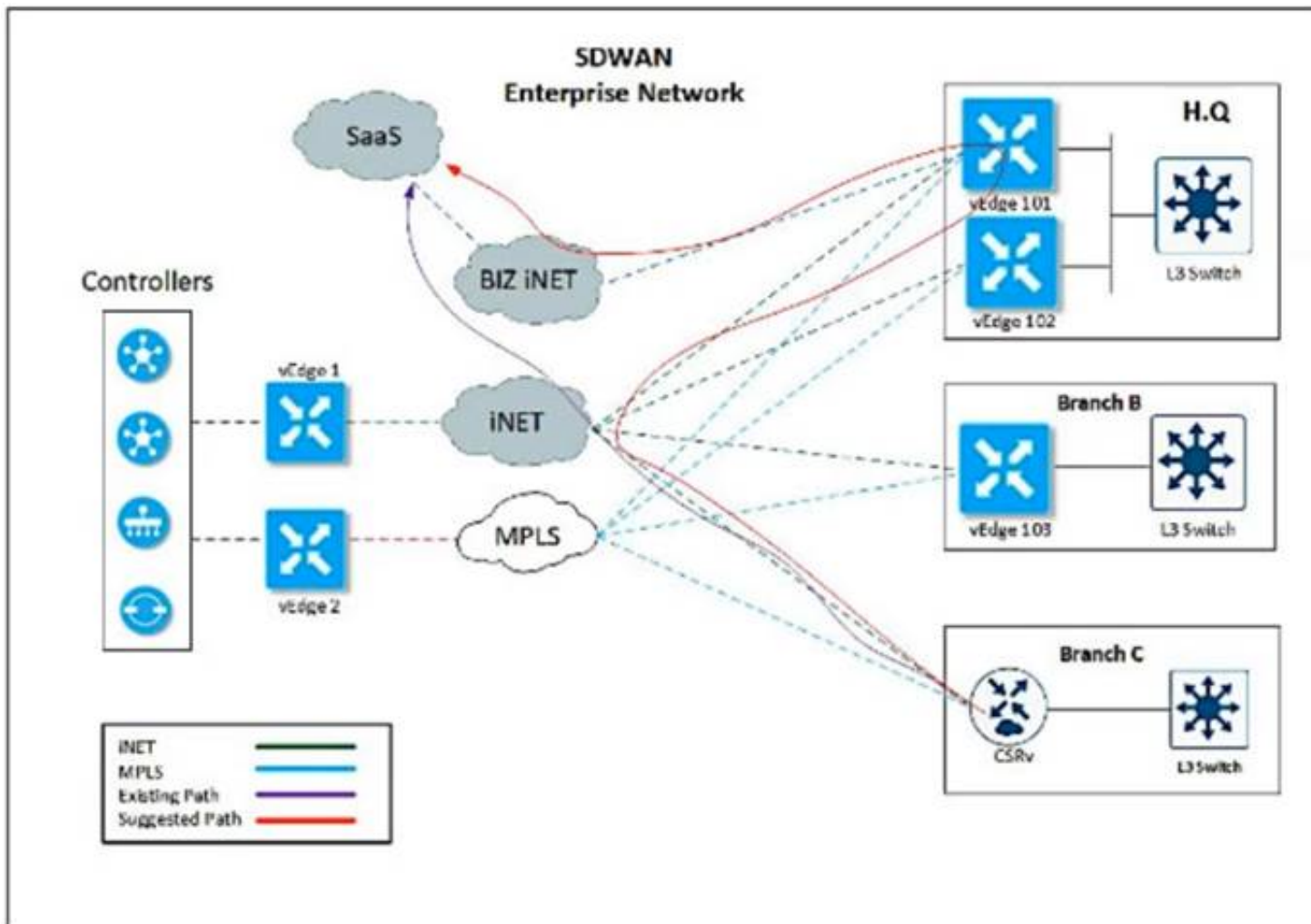
In a customer retail network with multiple data centers, what does the network administrator use to create a regional hub topology?

- A. control policy on vManage
- B. control policy on vSmart
- C. data policy on vSmart
- D. app route policy on vSmart

Answer: A

NEW QUESTION 380

Refer to the exhibit.



An enterprise decides to use the Cisco SD-WAN Cloud onRamp for SaaS feature and utilize H.Q site Biz iNET to reach SaaS Cloud for branch C. currently reaching SaaS Cloud directly. Which role must be assigned to devices at both sites in vManage Cloud Express for this solution to work?

- A. H.Q to be added as Gateway and Branch as DIA.
- B. Branch to be added as Client Sites and H.Q as DIA.
- C. Branch to be added as DIA and H.Q as Client Site.
- D. H.Q to be added as Gateway and Branch as Client Site.

**Answer: B**

#### NEW QUESTION 381

How is the software managed in Cisco SD-WAN?

- A. Software upgrade operation in the group must include vManag
- B. vBon
- C. and vSmart.
- D. Software downgrades are unsupported for vManage
- E. Software images must be uploaded to vManage through HTTP or FTP.
- F. Software images must be transferred through VPN 512 or VPN 0 of vManage.

**Answer: A**

#### NEW QUESTION 385

An administrator needs to configure SD-WAN to divert traffic from the company's private network to an ISP network. What action should be taken to accomplish this goal?

- A. configure the control policy
- B. configure the data policy
- C. configure the data security policy
- D. configure the application aware policy

**Answer: B**

#### Explanation:

Data policy influences the flow of data traffic traversing the network

#### NEW QUESTION 387

How are policies deployed on cloud-hosted Cisco SD-WAN controllers?

- A. Policies are created on vSmart and enforced by vSmart
- B. Policies are created on vSmart and enforced by vManage
- C. Policies are created on vManage and enforced by vManage.
- D. Policies are created on vManage and enforced by vSman

**Answer: A**

#### NEW QUESTION 392

Drag and drop the Cisco SD-WAN components from the left onto their functions on the right.

vBond Orchestrator	IPsec key reflection and rekeying
vManage	first point of authentication
vSmart Controller	passes data plane traffic
WAN Edge Router	used to build configuration and policies

- A. Mastered
- B. Not Mastered

Answer: A

Explanation:

vBond Orchestrator	vSmart Controller
vManage	vBond Orchestrator
vSmart Controller	WAN Edge Router
WAN Edge Router	vManage

NEW QUESTION 397

Which issue triggers the Cisco Umbrella resolver to toward DNS requests to the intelligent proxy? Which issue triggers the Cisco Umbrella resolver to toward DNS requests to the intelligent proxy?

- A. A domain is nonexistent.
- B. A domain is block-listed.
- C. A domain is locally reachable.
- D. A domain is grey-listed.

Answer: D

NEW QUESTION 401

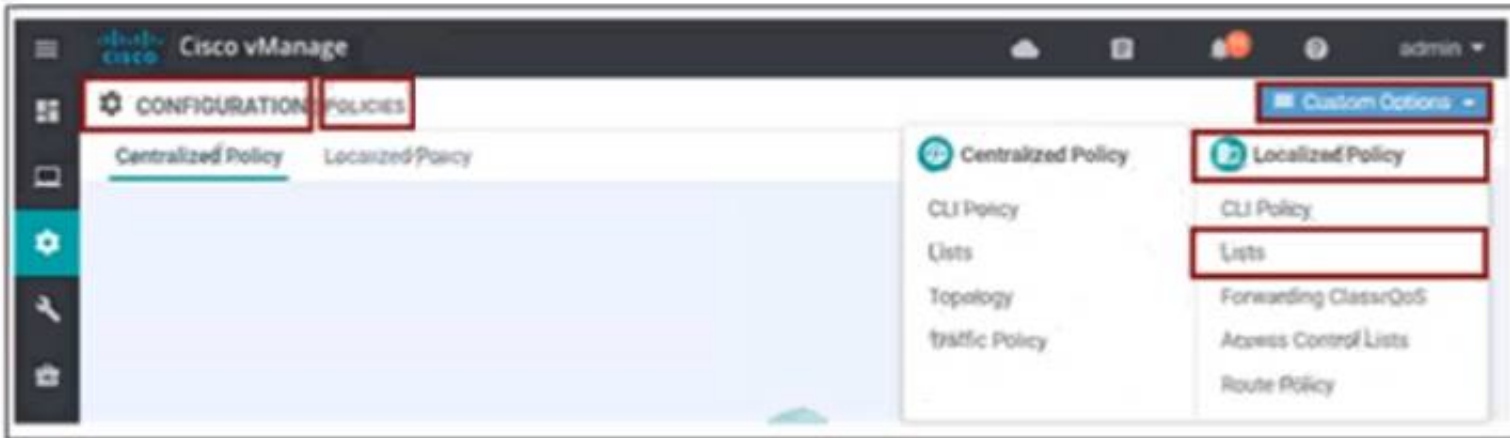
An engineer must create a QoS policy by creating a class map and assigning it to the LLQ queue on a WAN Edge router Which configuration accomplishes the task?

A)



B)





C)



D)



- A. Option A
- B. Option B
- C. Option C
- D. Option D

**Answer: D**

#### NEW QUESTION 405

Which scheduling method is configured by default for the eight queues in the cloud vEdge router1?

- A. low latency queue
- B. priority queue
- C. weighted random early detection
- D. weighted round robin

**Answer: D**

#### NEW QUESTION 406

Which SD-WAN component allows an administrator to manage and store software images for SD-WAN network elements?

- A. vGond controllers
- B. WAN Edge routers
- C. vSman controllers
- D. vManage NMS

**Answer: D**

#### NEW QUESTION 410

Refer to exhibit. An engineer is troubleshooting tear of control connection even though a valid CertificateSerialNumber is entered. Which two actions resolve Issue? (Choose two)

PEER PEER INSTANCE COLOR	PEER TYPE STATE	PEER PRIVATE PROTOCOL	PEER ERROR	SITE SYSTEM IP	DOMAIN PUBLIC ID	DOMAIN ID COUNT	PRIVATE IP DOWNTIME	LOCAL PORT	REMOTE PUBLIC IP	REPEAT PORT REMOTE
0 tear_down	vbond	dtls	0.0.0.0	9	0	0	192.168.0.231	12346	192.168.0.231	12346 default
	CRTREJ	SER	NOERR		2019-06-01T19:06:32+0200					

- A. Restore network reachability on the controller.
- B. Enter a valid serial number on the controller for a given device
- C. Enter a valid product ID (mode) on the PNP portal.
- D. Match the serial number file between the controller
- E. Remove the duplicate IP in the network

**Answer:** BC

#### NEW QUESTION 411

Which type of route advertisement of OMP can be verified?

- A. OMP, VP
- B. and origin
- C. Origin, TLOC, and VPN
- D. Origin, TLOC, and service
- E. OMP, TLOC and service

**Answer:** D

#### NEW QUESTION 414

Which multicast component is irrelevant when defining a multicast replicator outside the local network without any multicast sources or receivers?

- A. PIM interfaces
- B. TLOC
- C. overlay BFD
- D. OMP

**Answer:** A

#### NEW QUESTION 418

Which on-the-box security feature supported by the Cisco ISR 4451 SD-WAN device and not on vEdge?

- A. Cloud Express service
- B. Enterprise Firewall with Application Awareness
- C. reverse proxy
- D. IPsec/GRE cloud proxy

**Answer:** B

#### Explanation:

<https://www.cisco.com/c/en/us/products/collateral/software/one-wan-subscription/guide-c07-740642.html#Step2>

#### NEW QUESTION 422

Refer to the exhibit

PEER PRIVATE IP	PEER PRIVATE PORT	PEER PUBLIC IP	PEER PUBLIC PORT	REMOTE	COLOR	STATE	LOCAL ERROR
10.0.2.73	23456	10.0.2.73	23456	default		trying	DCONFALL

Cisco SD-WAN is deployed with controllers hosted in a data center All branches have WAN Edge devices with dual connections to the data center one via Internet and the other using MPLS Three branches out of 20 have issues with their control connections on MPLS circuit The local error refers to Control Connection Failure Which action resolves the issue\*?

- A. Rectify any issues with the underlay routing configuration
- B. Match the TLOC color on the controllers and all WAN Edge devices
- C. Match certificates for the DTLS connection and Root CA must be installed first on WAN Edge devices
- D. Update the system IP on vManage and then resend it to the controllers

**Answer:** A

#### NEW QUESTION 426

A WAN Edge device has several service VPNs with no routing protocol configured in the service VPNs The device must be configured so that all connected routes are visible in OMP for VPN 10 Which configuration meets the requirement?

- A)

```
vpn 10
name "---- Service VPN 10 ----"
omp
redistribute connected
```

B)

```
omp
no shutdown
graceful-restart
advertise connected
```

C)

```
omp
no shutdown
graceful-restart
redistribute connected
```

D)

```
vpn 10
name "---- Service VPN 10 ----"
omp
advertise connected
```

- A. Option A
- B. Option B
- C. Option B
- D. Option C

Answer: D

#### NEW QUESTION 431

Drag and drop the definitions from the left to the configuration on the right.

matching condition that allows traffic flow between two zones	destination zone
grouping of VPNs where the data traffic flows originate	firewall policy
container that associates forwarding and blocking decisions	source zone
grouping of VPNs where the data traffic flows terminate	zone pair

- A. Mastered
- B. Not Mastered

Answer: A

#### Explanation:

- **Source zone**—A grouping of VPNs where the data traffic flows originate.
- **Destination zone**—A grouping of VPNs where the data traffic flows terminate. A VPN can be part of only one zone
- **Zone-based firewall policy**—A data policy, similar to a localized data policy, that defines the conditions that the data traffic flow from the source zone must match to allow the flow to continue to the destination zone. Zone-based firewalls can match IP prefixes, IP ports, and protocols TCP, UDP, and ICMP. Matching flows can be accepted or dropped, and the packet headers can be logged. Nonmatching flows are dropped by default.
- **Zone pair**—A container that associates a source zone with a destination zone and that applies a zone-based firewall policy to the traffic that flows between zones.

Service Chaining

Traffic Flow Monitoring with Cflow

#### NEW QUESTION 433

Which OMP route is selected for equal OMP route preference values on WAN Edge routers?

- A. route with higher TLOC preference value
- B. route with origin type of connected



- C. route with origin type of static
- D. route with lower TLOC preference value

Answer: A

NEW QUESTION 438

Which OSPF command makes the WAN Edge router a less preferred exit from a site with a dual WAN Edge design?

A)

```
vpn vpn-id
router
ospf
area number
range prefix/length
```

B)

```
vpn vpn-id
router
ospf
max-metric
```

C)

```
vpn vpn-id
router
ospf
area number
no-summary
```

D)

```
vpn vpn-id
router
ospf
area number
nssa
no-summary
```

- A. Option A
- B. Option B
- C. Option C
- D. Option D

Answer: B

NEW QUESTION 442

The network administrator is configuring a QoS scheduling policy on traffic received from transport side tunnels on WAN Edge 5000 routers at location 406141498 Which command must be configured on these devices?

- A. cloud-qos
- B. service qos
- C. cloud-mis qos
- D. mis qos

Answer: A

NEW QUESTION 447

Drag and drop the steps from the left into the order on the right to upload software on vManage repository that is accessible from maintenance > Software Repository.

Click the repository	Step 1
select vManage to store the software	Step 2
Click Add net software	Step 3
Choose the file and click upload	Step 4

- A. Mastered
- B. Not Mastered

Answer: A



**Explanation:**

## Add an Image to the Software Repository

To add a software image to the software repository:

1. In Cisco vManage, click **Maintenance > Software Repository**.
2. Click **Add New Software** and select **vManage** from the drop-down menu.
3. In the **Upload Software to vManage** dialog box:
  - a. Click **Browse** and browse to the desired software image.
  - b. Click **Upload**.

<https://www.cisco.com/c/en/us/td/docs/routers/sdwan/configuration/Monitor-And-Maintain/monitor-maintain-bo>

### NEW QUESTION 450

What is the procedure to upgrade all Cisco SD-WAN devices to a recent version?

- A. The upgrade is performed for a group of WAN Edge devices first to ensure data-plane availability when other controllers are updated.
- B. The upgrade is performed first on vManage, then on WAN Edge devices, then on vBond and finally on vSmart. The reboot must start from WAN Edge devices.
- C. Upgrade and reboot are performed first on vManage then on vBond then on vSmart and finally on the Cisco WAN Edge devices.
- D. and finally on the Cisco WAN Edge devices.
- E. Upgrade and reboot are performed first on vBond
- F. then on vSmart
- G. and finally on the Cisco WAN Edge devices.

**Answer: C**

### NEW QUESTION 453

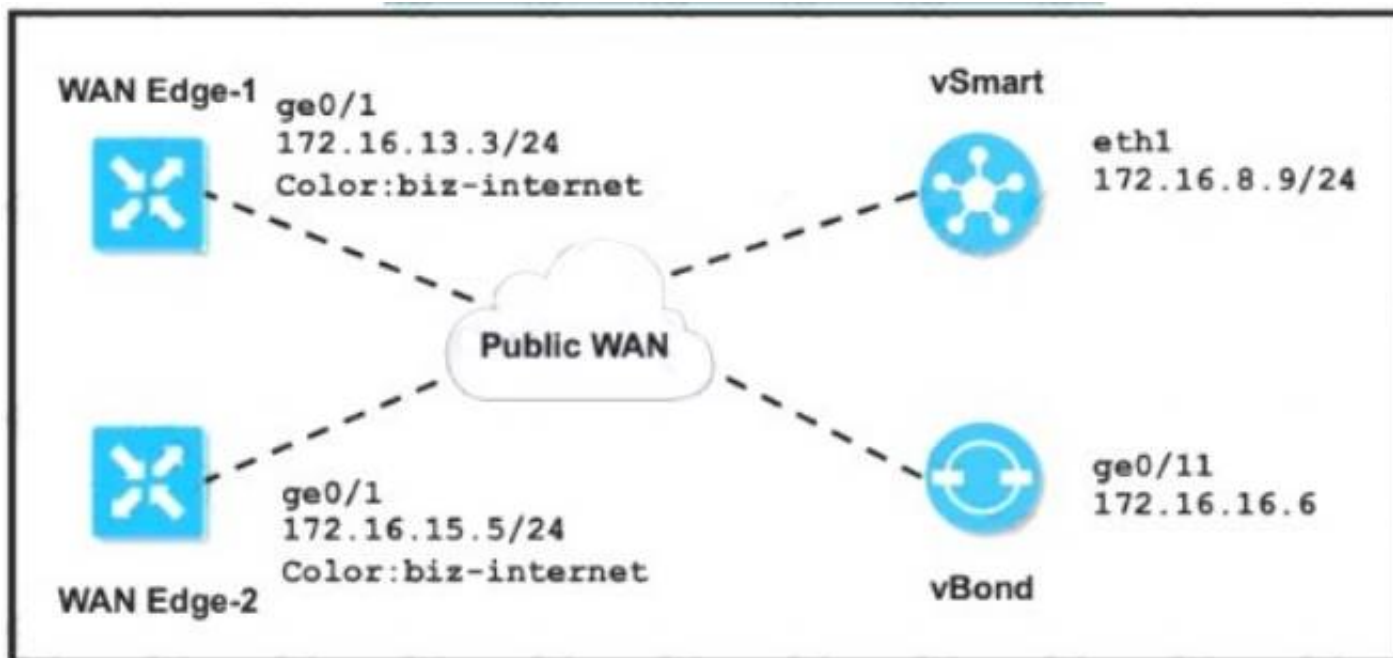
REST applications communicate over HTTP or HTTPS to make calls between network devices. Which two HTTPS standard methods are included? (Choose two.)

- A. Array
- B. DELETE
- C. POST
- D. Scalar
- E. Object

**Answer: BC**

### NEW QUESTION 456

Refer to the exhibit.



The tunnel interface configuration on both WAN Edge routers is:

```

vpn 0
 interface ge0/1
  tunnel-interface
  encapsulation ipsec
  color biz-internet
  allow-service dhcp
  allow-service dns
  allow-service icmp
  no allow-service sshd
  no allow-service ntp
  no allow-service stun
  !
  no shutdown
  
```

Which configuration for WAN Edge routers will connect to the Internet?

- ☐ vpn 0  
interface ge0/1  
ip address 172.16.16.5/24  
ip route 0.0.0.0/0 172.16.13.1
- ☐ vpn 0  
interface ge0/1  
ip address 172.16.13.3/24  
ip route 0.0.0.0/0 172.16.13.1
- ☐ vpn 0  
interface ge0/1  
ip address 172.16.13.3/24  
ip route 0.0.0.0/0 172.16.8.1
- ☐ vpn 0  
interface ge0/1  
ip address 172.16.16.5/24  
ip route 0.0.0.0/0 172.16.8.1

- A. Option A
- B. Option B
- C. Option C
- D. Option D

Answer: B

Explanation:

[https://sdwan-docs.cisco.com/Product\\_Documentation/Software\\_Features/SD-WAN\\_Release\\_16.3/02System\\_a](https://sdwan-docs.cisco.com/Product_Documentation/Software_Features/SD-WAN_Release_16.3/02System_a)

NEW QUESTION 458

Refer to the exhibit.

Address Family

On

Off

Address Family

ipv4-unicast

Maximum Number of Prefixes

Route Policy In

On

Off

Route Policy Out

On

Off

Policy Name

eBGP\_Community\_Policy

The engineer must assign community tags to 3 of its 74 critical server networks as soon as that are advertised to BGP peers. These server networks must not be advertised outside AS. Which configuration fulfill this requirement?

- A)

```
policy
route-policy eBGP_Community_Policy
sequence 1
match
address Community_Prefix
action accept
set
community 999:65000 local-as
default-action reject
lists
prefix-list Community_Prefix
ip-prefix 20.20.20.0/24
ip-prefix 21.21.21.0/24
ip-prefix 22.22.22.0/24
```
- B)

```
policy
route-policy eBGP_Community_Policy
sequence 1
match
address Community_Prefix
action accept
set
community 999:65000 no-export
default-action accept
lists
prefix-list Community_Prefix
ip-prefix 20.20.20.0/24
ip-prefix 21.21.21.0/24
ip-prefix 22.22.22.0/24
```
- C)

```
policy
route-policy eBGP_Community_Policy
sequence 1
match
address Community_Prefix
action accept
set
community 999:65000 local-as
default-action reject
lists
prefix-list Community_Prefix
ip-prefix 20.20.20.0/24
ip-prefix 21.21.21.0/24
ip-prefix 22.22.22.0/24
```

D)

```
policy
route-policy eBGP_Community_Polic
sequence 1
match
address Community_Prefix
action accept
set
community 999:65000 no-export
default-action accept
lists
prefix-list Community_Prefix
ip-prefix 20.20.20.0/24
ip-prefix 21.21.21.0/24
ip-prefix 22.22.22.0/24
```

- A. Option A
- B. Option B
- C. Option C
- D. Option D

Answer: D

#### NEW QUESTION 460

A network administrator is configuring a tunnel interface on a branch Cisco IOS XE router to run TLOC extensions. Which configuration will extend a TLOC over a GRE tunnel to another router in the branch?

- ☒

```
sdwan
interface g0/0
extended-interface
tloc-extension-gre-from 10.1.1.1
```
- ☐

```
sdwan
interface g0/0
gre-interface
tloc-extension-gre-to 10.1.1.1
```
- ☐

```
sdwan
interface g0/0
tunnel-interface
tloc-extension-gre-to 10.1.1.1
```
- ☒

```
sdwan
interface g0/0
tloc-interface
tloc-extension-gre-from 10.1.1.1
```

- A. Option A
- B. Option B
- C. Option C
- D. Option D

Answer: C

#### Explanation:

Configure a tunnel interface over which to run TLOC extensions (on IOS XE routers only). TLOC extensions allow you to extend a TLOC, over a GRE tunnel, to another router in the branch.

#### Command Hierarchy

```
sdwan
interface interface-name
tunnel-interface
tloc-extension-gre-to extended-interface-ip-address
```

**NEW QUESTION 462**

An engineer must configure a centralized policy on a site in which all HTTP traffic should use the Public Internet circuit if the loss on this circuit is below 10%. otherwise MPLS should be used Which configuration wizard fulfils this requirement?

- A. Create Applications or Groups of Interest > Configure Traffic Rules > Apply Policies to Sites and VPNs
- B. Configure VPN Membership > Apply Policies to Sites and VPNs
- C. Create Applications or Groups of interest > Configure Traffic Data > Apply Policies to Sites and VPNs
- D. Configure Topology > Apply Policies to Sites and VPNs

**Answer: A**

**NEW QUESTION 466**

In which device state does the WAN edge router create control connections, but data tunnels are not created?

- A. valid
- B. backup
- C. active
- D. staging

**Answer: D**

**Explanation:**

**Staging** – In this state, the WAN Edge device establishes secure control plane connections to the SD-WAN controllers (vBond, vManage, and vSmart) only. It is important to note that no data plane connections are established with other WAN Edge devices in the overlay network.

**NEW QUESTION 470**

An engineer is tasked to improve throughput for connection-oriented traffic by decreasing round-trip latency. Which configuration will achieve this goal?

- A. turn on "Enable TCP Optimization"
- B. turn off "Enhance ECMP Keying"
- C. turn off "Enable TCP Optimization"
- D. turn on "Enhance ECMP Keying"

**Answer: A**

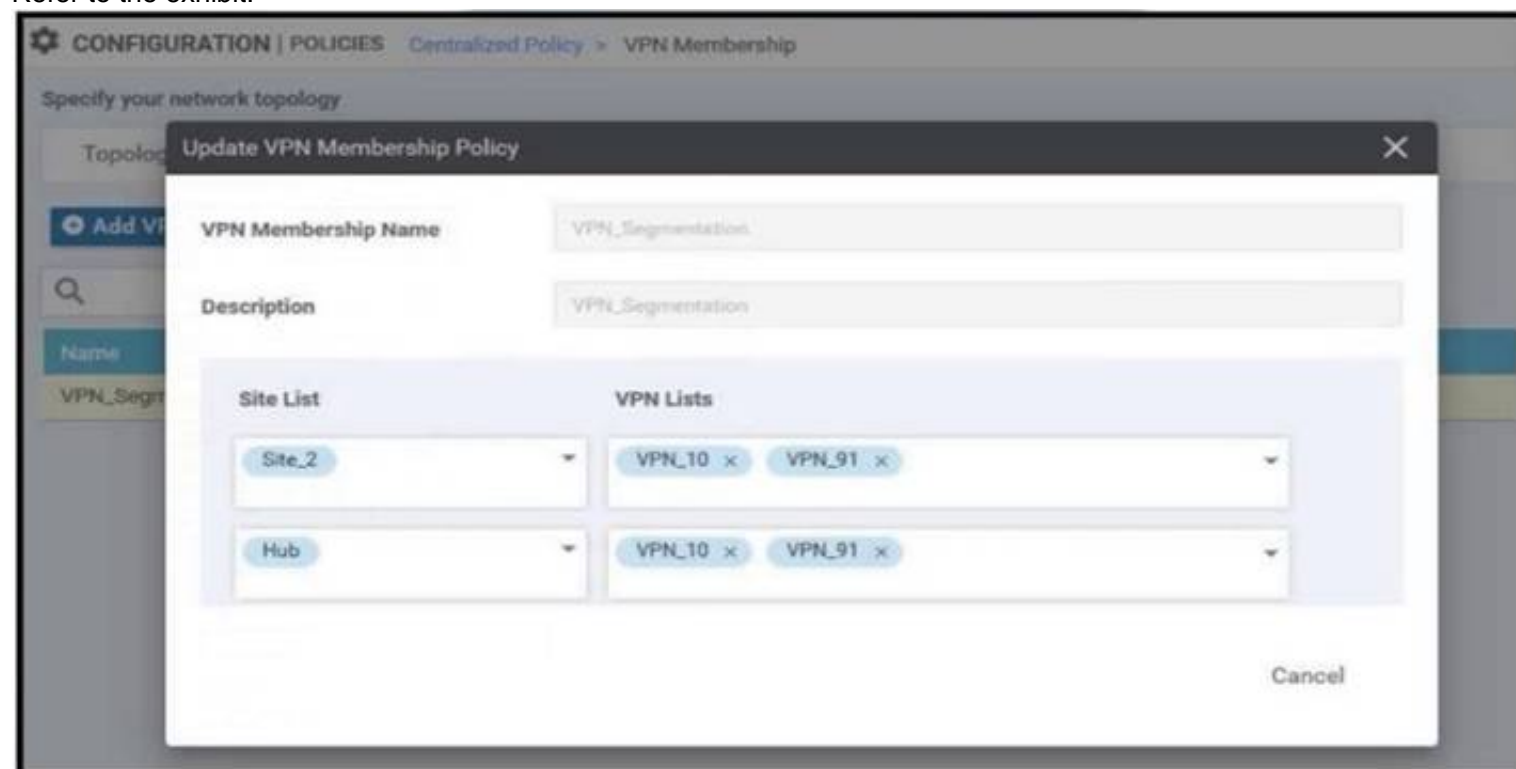
**Explanation:**

**TCP optimization** fine-tunes the processing of TCP data traffic to decrease round-trip latency and improve throughput.

<https://www.cisco.com/c/dam/en/us/td/docs/routers/sdwan/configuration/config-18-2.pdf#page=530>

**NEW QUESTION 474**

Refer to the exhibit.



An enterprise has hub and spoke topology where it has several VPNs. An engineer must allow users in VPN91 to reach users in VPN92 and VPN10 to reach VPN91 and VPN92. Which configuration meets these requirements?

A)



Route

Sequence Rule Drag and drop to re-arrange rules

1

Match Conditions

VPN List: VPN\_91

VPN Id

Actions

Accept

Export To: VPN\_92

2

Match Condition

VPN List: VPN\_92

VPN Id

Actions

Accept

Export To: VPN\_91

3

Match Condition

VPN List: VPN\_91\_and\_VPN\_92

VPN Id

Actions

Accept

Export To: VPN\_10

B)

Route

Sequence Rule Drag and drop to re-arrange rules

1

Match Conditions

VPN List: VPN\_10

VPN Id

Actions

Accept

Export To: VPN\_91\_and\_VPN\_92

2

Match Conditions

VPN List: All\_9X\_VPNs

VPN Id

Actions

Accept

Export To: All\_9X\_VPNs

3

Match Conditions

VPN List: VPN\_91\_and\_VPN\_92

VPN Id

Actions

Accept

Export To: VPN\_10

C)

Route

Sequence Rule Drag and drop to re-arrange rules

1

Match Conditions

VPN List: VPN\_10

VPN Id

Actions

Accept

Export To: VPN\_91\_and\_VPN\_92

2

Match Conditions

VPN List: VPN\_91\_and\_VPN\_92

VPN Id

Actions

Accept

Export To: VPN\_91\_and\_VPN\_92

3

Match Conditions

VPN List: VPN\_91\_and\_VPN\_92

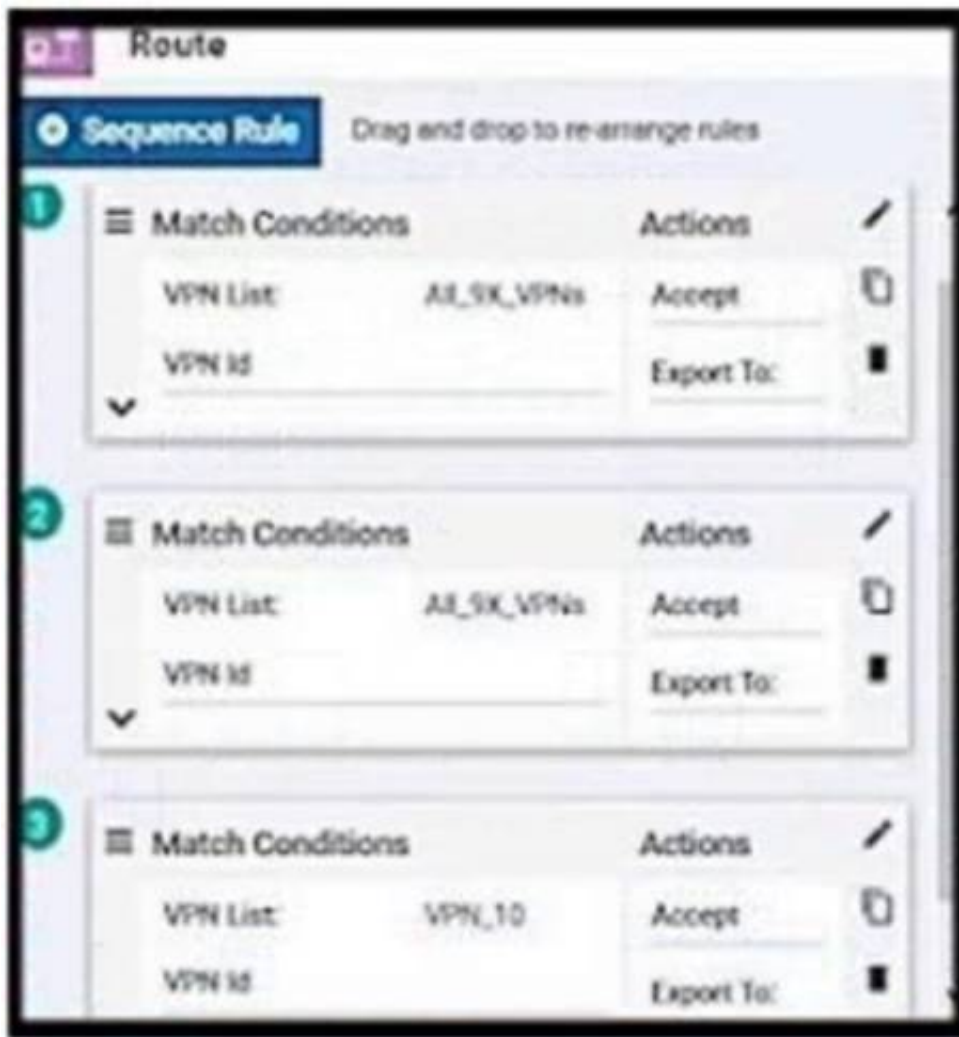
VPN Id

Actions

Accept

Export To: VPN\_10

D)



- A. Option A
- B. Option B
- C. Option C
- D. Option D

Answer: C

#### NEW QUESTION 479

What is the order of operations for software upgrades of Cisco SD-WAN nodes'?

- A. vBond vManage vSmart WAN Edge
- B. vManage vBond WAN Edg
- C. vSmart
- D. vManage vSmart, vBond, WAN Edge
- E. vManage vBond vSraart WAN Edge

Answer: D

#### NEW QUESTION 480

Which two vRoute attributes should be matched or set in vSmart policies and modified by data policies? (Choose two.)

- A. site ID
- B. preference
- C. VPN
- D. TLOC
- E. origin

Answer: BC

#### NEW QUESTION 482

Which type of lists are used to group related items via an application-aware routing policy under the policy lists command hierarchy on vSmart controllers?

- A. data prefix, sh
- B. and VPN
- C. OSCP value, application, and VPN
- D. data prefix, application, and SLA class
- E. DSCP value, site, and VPN

Answer: C

#### NEW QUESTION 485

.....

## Thank You for Trying Our Product

### We offer two products:

1st - We have Practice Tests Software with Actual Exam Questions

2nd - Questions and Answers in PDF Format

### 300-415 Practice Exam Features:

- \* 300-415 Questions and Answers Updated Frequently
- \* 300-415 Practice Questions Verified by Expert Senior Certified Staff
- \* 300-415 Most Realistic Questions that Guarantee you a Pass on Your First Try
- \* 300-415 Practice Test Questions in Multiple Choice Formats and Updates for 1 Year

**100% Actual & Verified — Instant Download, Please Click**  
**[Order The 300-415 Practice Test Here](#)**