

az-500 Dumps

Microsoft Azure Security Technologies

<https://www.certleader.com/az-500-dumps.html>



NEW QUESTION 1

Your network contains an on-premises Active Directory domain named corp.contoso.com.

You have an Azure subscription named Sub1 that is associated to an Azure Active Directory (Azure AD) tenant named contoso.com. You sync all on-premises identities to Azure AD.

You need to prevent users who have a givenName attribute that starts with TEST from being synced to Azure AD. The solution must minimize administrative effort. What should you use?

- A. Synchronization Rules Editor
- B. Web Service Configuration Tool
- C. the Azure AD Connect wizard
- D. Active Directory Users and Computers

Answer: A

Explanation:

Use the Synchronization Rules Editor and write attribute-based filtering rule.

References:

<https://docs.microsoft.com/en-us/azure/active-directory/hybrid/how-to-connect-sync-change-the-configuration>

NEW QUESTION 2

DRAG DROP

You need to configure an access review. The review will be assigned to a new collection of reviews and reviewed by resource owners.

Which three actions should you perform in sequence? To answer, move the appropriate actions from the list of actions to the answer area and arrange them in the correct order.

Select and Place:

Actions	Answer Area
Create an access review program.	
Set Reviewers to Selected users.	
Create an access review audit.	⬅
Create an access review control.	➡
Set Reviewers to Group owners.	⬆
Set Reviewers to Members.	⬇

- A. Mastered
- B. Not Mastered

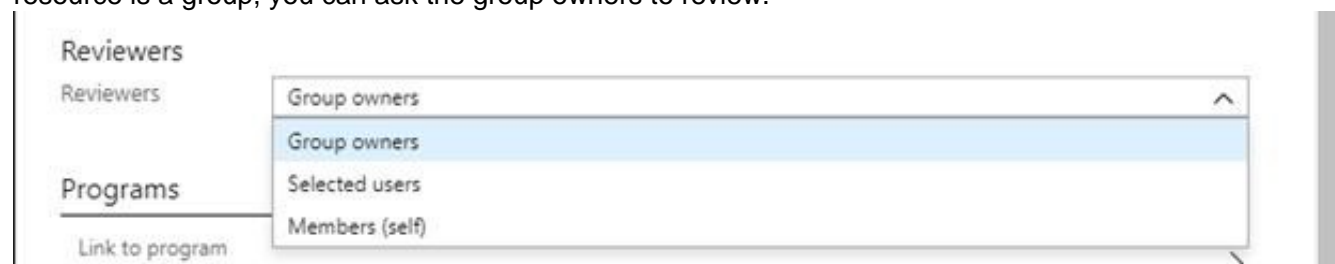
Answer: A

Explanation:

Step 1: Create an access review program Step 2: Create an access review control

Step 3: Set Reviewers to Group owners

In the Reviewers section, select either one or more people to review all the users in scope. Or you can select to have the members review their own access. If the resource is a group, you can ask the group owners to review.



References:

<https://docs.microsoft.com/en-us/azure/active-directory/governance/create-access-review>

<https://docs.microsoft.com/en-us/azure/active-directory/governance/manage-programs-controls>

NEW QUESTION 3

DRAG DROP

You create an Azure subscription.

You need to ensure that you can use Azure Active Directory (Azure AD) Privileged Identity Management (PIM) to secure Azure AD roles.

Which three actions should you perform in sequence? To answer, move the appropriate actions from the list of actions to the answer area and arrange them in the correct order.

Select and Place:

Actions

Verify your identity by using multi-factor authentication (MFA).

Consent to PIM.

Sign up PIM for Azure AD roles.

Discover privileged roles.

Discover resources.

Answer Area

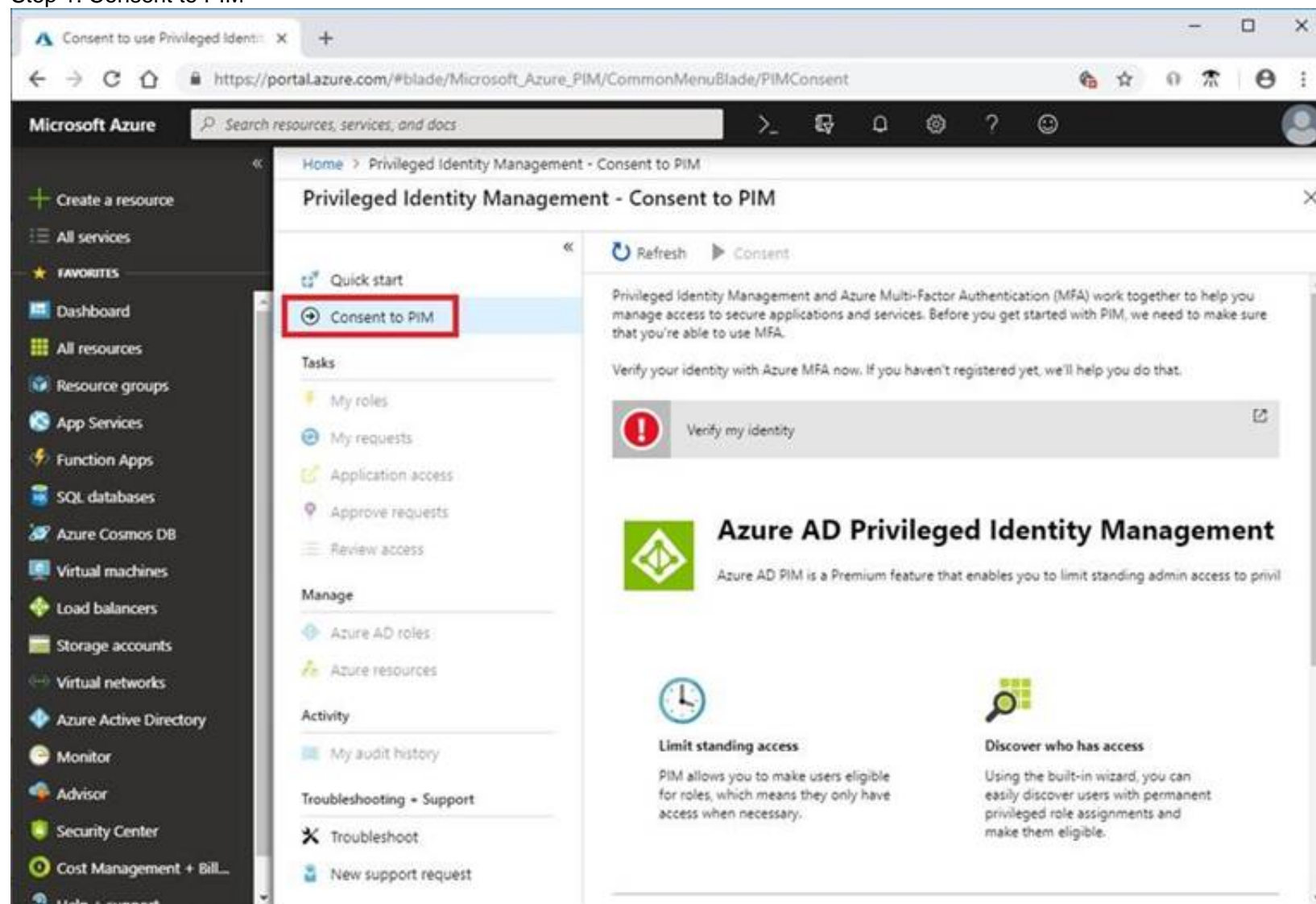


- A. Mastered
- B. Not Mastered

Answer: A

Explanation:

Step 1: Consent to PIM



Step: 2 Verify your identity by using multi-factor authentication (MFA)

Click Verify my identity to verify your identity with Azure MFA. You'll be asked to pick an account.

Step 3: Sign up PIM for Azure AD roles

Once you have enabled PIM for your directory, you'll need to sign up PIM to manage Azure AD roles.

References:

<https://docs.microsoft.com/en-us/azure/active-directory/privileged-identity-management/pim-getting-started>

NEW QUESTION 4

Your company plans to create separate subscriptions for each department. Each subscription will be associated to the same Azure Active Directory (Azure AD) tenant.

You need to configure each subscription to have the same role assignments. What should you use?

- A. Azure Security Center
- B. Azure Blueprints
- C. Azure AD Privileged Identity Management (PIM)
- D. Azure Policy

Answer: C

Explanation:

The Azure AD Privileged Identity Management (PIM) service also allows Privileged Role Administrators to make permanent admin role assignments.

References:

<https://docs.microsoft.com/en-us/azure/active-directory/privileged-identity-management/pim-how-to-add-role-to-user>

NEW QUESTION 5

You have an Azure subscription.

You create an Azure web app named Contoso1812 that uses an S1 App service plan.

You create a DNS record for www.contoso.com that points to the IP address of Contoso1812.

You need to ensure that users can access Contoso1812 by using the <https://www.contoso.com> URL. Which two actions should you perform? Each correct answer presents part of the solution.

NOTE: Each correct selection is worth one point.

A. Turn on the system-assigned managed identity for Contoso1812.

B. Add a hostname to Contoso1812.

C. Scale out the App Service plan of Contoso1812.

D. Add a deployment slot to Contoso1812.

E. Scale up the App Service plan of Contoso1812.

Answer: BE

Explanation:

B: You can configure Azure DNS to host a custom domain for your web apps. For example, you can create an Azure web app and have your users access it using either www.contoso.com or contoso.com as a fully qualified domain name (FQDN).

To do this, you have to create three records:

A root "A" record pointing to contoso.com A root "TXT" record for verification

A "CNAME" record for the www name that points to the A record

E: To map a custom DNS name to a web app, the web app's App Service plan must be a paid tier (Shared, Basic, Standard, Premium or Consumption for Azure Functions). I

Scale up the App Service plan: Select any of the non-free tiers (D1, B1, B2, B3, or any tier in the Production category). References:

<https://docs.microsoft.com/en-us/azure/dns/dns-web-sites-custom-domain>

Testlet 1

This is a case study. Case studies are not timed separately. You can use as much exam time as you would like to complete each case. However, there may be additional case studies and sections on this exam. You must manage your time to ensure that you are able to complete all questions included on this exam in the time provided.

To answer the questions included in a case study, you will need to reference information that is provided in the case study. Case studies might contain exhibits and other resources that provide more information about the scenario that is described in the case study. Each question is independent of the other question on this case study.

At the end of this case study, a review screen will appear. This screen allows you to review your answers and to make changes before you move to the next sections of the exam. After you begin a new section, you cannot return to this section.

To start the case study

To display the first question on this case study, click the Next button. Use the buttons in the left pane to explore the content of the case study before you answer the questions. Clicking these buttons displays information such as business requirements, existing environment, and problem statements. If the case study has an All Information tab, note that the information displayed is identical to the information displayed on the subsequent tabs. When you are ready to answer a question, click the Question button to return to the question.

Overview

Litware, Inc. is a digital media company that has 500 employees in the Chicago area and 20 employees in the San Francisco area.

Existing Environment

Litware has an Azure subscription named Sub1 that has a subscription ID of 43894a43-17c2-4a39-8cfc-3540c2653ef4.

Sub1 is associated to an Azure Active Directory (Azure AD) tenant named litwareinc.com. The tenant contains the user objects and the device objects of all the Litware employees and their devices. Each user is assigned an Azure AD Premium P2 license. Azure AD Privileged Identity Management (PIM) is activated.

The tenant contains the groups shown in the following table.

Name	Type	Description
Group1	Security group	A group that has the Dynamic User membership type, contains all the San Francisco users, and provides access to many Azure AD applications and Azure resources.
Group2	Security group	A group that has the Dynamic User membership type and contains the Chicago IT team

The Azure subscription contains the objects shown in the following table.

Name	Type	Description
VNet1	Virtual network	VNet1 is a virtual network that contains security-sensitive IT resources. VNet1 contains three subnets named Subnet0, Subnet1, and AzureFirewallSubnet.
VM0	Virtual machine	VM0 is an Azure virtual machine that runs Windows Server 2016, connects to Subnet0, and has just in time (JIT) VM access configured.
VM1	Virtual machine	VM1 is an Azure virtual machine that runs Windows Server 2016 and connects to Subnet0.
SQLDB1	Azure SQL Database	SQLDB1 is an Azure SQL database on a SQL Database server named LitwareSQLServer1.
WebApp1	Web app	WebApp1 is an Azure web app that is accessible by using https://litwareinc.com and http://www.litwareinc.com .
Resource Group1	Resource group	Resource Group1 is a resource group that contains VNet1, VM0, and VM1.
Resource Group2	Resource group	Resource Group2 is a resource group that contains shared IT resources.

Azure Security Center is set to the Free tier.

Planned changes

Litware plans to deploy the Azure resources shown in the following table.

Name	Type	Description
Firewall1	Azure Firewall	An Azure firewall on VNet1.
RT1	Route table	A route table that will contain a route pointing to Firewall1 as the default gateway and will be assigned to Subnet0.
AKS1	Azure Kubernetes Service (AKS)	A managed AKS cluster

Litware identifies the following identity and access requirements:

- _ All San Francisco users and their devices must be members of Group1.
- _ The members of Group2 must be assigned the Contributor role to Resource Group2 by using a permanent eligible assignment.
- _ Users must be prevented from registering applications in Azure AD and from consenting to applications that access company information on the users' behalf.

Platform Protection Requirements

Litware identifies the following platform protection requirements:

- _ Microsoft Antimalware must be installed on the virtual machines in Resource Group1.
- _ The members of Group2 must be assigned the Azure Kubernetes Service Cluster Admin Role. Azure AD users must be to authenticate to AKS1 by using their Azure AD credentials.
- _ Following the implementation of the planned changes, the IT team must be able to connect to VM0 by using JIT VM access.
- _ A new custom RBAC role named Role1 must be used to delegate the administration of the managed disks in Resource Group1. Role1 must be available only for Resource Group1.

Security Operations Requirements

Litware must be able to customize the operating system security configurations in Azure Security Center.

NEW QUESTION 6

HOTSPOT

You are evaluating the security of the network communication between the virtual machines in Sub2. For each of the following statements, select Yes if the statement is true. Otherwise, select No. NOTE: Each correct selection is worth one point.

Hot Area:

Answer Area

Statements	Yes	No
From VM1, you can successfully ping the public IP address of VM2.	<input type="radio"/>	<input type="radio"/>
From VM1, you can successfully ping the private IP address of VM3.	<input type="radio"/>	<input type="radio"/>
From VM1, you can successfully ping the public IP address of VM5.	<input type="radio"/>	<input type="radio"/>

A. Mastered

B. Not Mastered

Answer: A

Explanation:

Box 1: Yes

NSG1 has the inbound security rules shown in the following table.

Priority	Port	Protocol	Source	Destination	Action
65000	Any	Any	VirtualNetwork	VirtualNetwork	Allow
65001	Any	Any	AzureLoadBalancer	Any	Allow
65500	Any	Any	Any	Any	Deny

NSG2 has the inbound security rules shown in the following table.

Priority	Port	Protocol	Source	Destination	Action
100	80	TCP	Internet	VirtualNetwork	Allow
65000	Any	Any	VirtualNetwork	VirtualNetwork	Allow
65001	Any	Any	AzureLoadBalancer	Any	Allow
65500	Any	Any	Any	Any	Deny

Box 2: Yes

Box 3: No Note:

Sub2 contains the virtual machines shown in the following table.

Name	Network interface	Application security group	Connected to
VM1	NIC1	ASG1	Subnet1.1
VM2	NIC2	ASG2	Subnet1.1
VM3	NIC3	None	Subnet1.2
VM4	NIC4	ASG1	Subnet1.3
VM5	NIC5	None	Subnet2.1

Name	Subnet
VNetwork1	Subnet1.1, Subnet1.2 and Subnet1.3
VNetwork2	Subnet2.1

Sub2 contains the network security groups (NSGs) shown in the following table.

Name	Associated to
NSG1	NIC2
NSG2	Subnet1.1
NSG3	Subnet1.3
NSG4	Subnet2.1

Question Set 3

NEW QUESTION 7

You have an Azure subscription named Sub1. Sub1 contains a virtual network named VNet1 that contains one subnet named Subnet1.

You create a service endpoint for Subnet1.

Subnet1 contains an Azure virtual machine named VM1 that runs Ubuntu Server 18.04.

You need to deploy Docker containers to VM1. The containers must be able to access Azure Storage resources and Azure SQL databases by using the service endpoint.

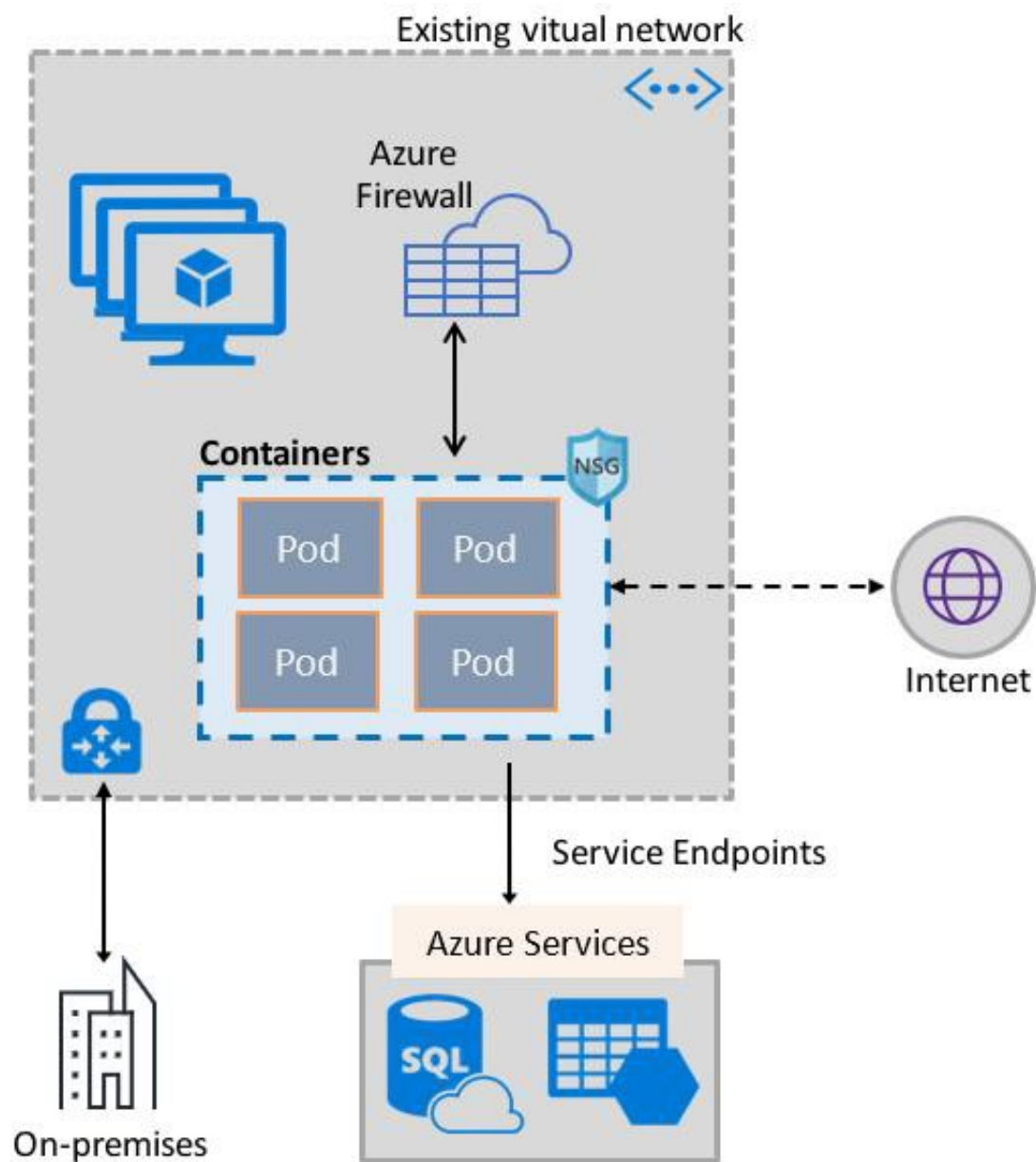
- A. Create an application security group and a network security group (NSG).
- B. Edit the docker-compose.yml file.
- C. Install the container network interface (CNI) plug-in.

Answer: C

Explanation:

The Azure Virtual Network container network interface (CNI) plug-in installs in an Azure Virtual Machine. The plug-in supports both Linux and Windows platform. The plug-in assigns IP addresses from a virtual network to containers brought up in the virtual machine, attaching them to the virtual network, and connecting them directly to other containers and virtual network resources. The plug-in doesn't rely on overlay networks, or routes, for connectivity, and provides the same performance as virtual machines.

The following picture shows how the plug-in provides Azure Virtual Network capabilities to Pods:



References:

<https://docs.microsoft.com/en-us/azure/virtual-network/container-networking-overview>

NEW QUESTION 8

HOTSPOT

You have an Azure subscription that contains the virtual machines shown in the following table.

Name	Resource group	Status
VM1	RG1	Stopped (Deallocated)
VM2	RG2	Stopped (Deallocated)

You create the Azure policies shown in the following table.

Policy definition	Resource type	Scope
Not allowed resource types	virtualMachines	RG1
Allowed resource types	virtualMachines	RG2

You create the resource locks shown in the following table.

Name	Type	Created on
Lock1	Read-only	VM1
Lock2	Read-only	RG2

For each of the following statements, select Yes if the statement is true. Otherwise, select No.

NOTE: Each correct selection is worth one point.

Hot Area:

Answer Area

Statements	Yes	No
You can start VM1.	<input type="radio"/>	<input type="radio"/>
You can start VM2.	<input type="radio"/>	<input type="radio"/>
You can create a virtual machine in RG2.	<input type="radio"/>	<input type="radio"/>

- A. Mastered
- B. Not Mastered

Answer: A

Explanation:

Answer Area

Statements	Yes	No
You can start VM1.	<input type="radio"/>	<input checked="" type="radio"/>
You can start VM2.	<input checked="" type="radio"/>	<input type="radio"/>
You can create a virtual machine in RG2.	<input checked="" type="radio"/>	<input type="radio"/>

References:
<https://docs.microsoft.com/en-us/azure/governance/blueprints/concepts/resource-locking>

NEW QUESTION 9

HOTSPOT

You have Azure virtual machines that have Update Management enabled. The virtual machines are configured as shown in the following table.

Name	Operating system	Region	Resource group
VM1	Windows Server 2012	East US	RG1
VM2	Windows Server 2012 R2	West US	RG1
VM3	Windows Server 2016	West US	RG2
VM4	Ubuntu Server 18.04 LTS	West US	RG2
VM5	Red Hat Enterprise Linux 7.4	East US	RG1
VM6	CentOS 7.5	East US	RG1

You schedule two update deployments named Update1 and Update2. Update1 updates VM3. Update2 updates VM6.
Which additional virtual machines can be updated by using Update1 and Update2? To answer, select the appropriate options in the answer area.
NOTE: Each correct selection is worth one point.

Hot Area:

Answer Area

Update1:

▼

VM2 only

VM4 only

VM1 and VM2 only

VM1, VM2, VM4, VM5, and VM6

Update2:

▼

VM5 only

VM1 and VM5 only

VM4 and VM5 only

VM1, VM2, and VM5 only

VM1, VM2, VM3, VM4, and VM5

- A. Mastered
- B. Not Mastered

Answer: A

Explanation:
Update1: VM1 and VM2 only

VM3: Windows Server 2016 West US RG2

Update2: VM4 and VM5 only VM6: CentOS 7.5 East US RG1

For Linux, the machine must have access to an update repository. The update repository can be private or public. References:

<https://docs.microsoft.com/en-us/azure/automation/automation-update-management>

NEW QUESTION 10

HOTSPOT

You have an Azure subscription named Sub1.

You create a virtual network that contains one subnet. On the subnet, you provision the virtual machines shown in the following table.

Name	Network interface	Application security group assignment	IP address
VM1	NIC1	AppGroup12	10.0.0.10
VM2	NIC2	AppGroup12	10.0.0.11
VM3	NIC3	AppGroup3	10.0.0.100
VM4	NIC4	AppGroup4	10.0.0.200

Currently, you have not provisioned any network security groups (NSGs). You need to implement network security to meet the following requirements:

- _ Allow traffic to VM4 from VM3 only.
- _ Allow traffic from the Internet to VM1 and VM2 only. Minimize the number of NSGs and network security rules.

How many NSGs and network security rules should you create? To answer, select the appropriate options in the answer area.

NOTE: Each correct selection is worth one point.

Hot Area:

Answer Area

NSGs:

Network security rules:

- A. Mastered
B. Not Mastered

Answer: A

Explanation:

NSGs: 2

Network security rules: 3

Not 2: You cannot specify multiple service tags or application groups) in a security rule.

References:

<https://docs.microsoft.com/en-us/azure/virtual-network/security-overview>

NEW QUESTION 10

You have an Azure subscription named Sub1 that is associated to an Azure Active Directory (Azure AD) tenant named contoso.com.

You are assigned the Global administrator role for the tenant. You are responsible for managing Azure Security Center settings. You need to create a custom sensitivity label.

What should you do first?

- A. Create a custom sensitive information type.
B. Elevate access for global administrators in Azure AD.
C. Upgrade the pricing tier of the Security Center to Standard.
D. Enable integration with Microsoft Cloud App Security.

Answer: A

Explanation:

First, you need to create a new sensitive information type because you can't directly modify the default rules.

References:

<https://docs.microsoft.com/en-us/office365/securitycompliance/customize-a-built-in-sensitive-information-type>

NEW QUESTION 11

You need to configure WebApp1 to meet the data and application requirements.
Which two actions should you perform? Each correct answer presents part of the solution.
NOTE: Each correct selection is worth one point.

- A. Upload a public certificate.
- B. Turn on the HTTPS Only protocol setting.
- C. Set the Minimum TLS Version protocol setting to 1.2.
- D. Change the pricing tier of the App Service plan.
- E. Turn on the Incoming client certificates protocol setting.

Answer: AC

Explanation:

A: To configure Certificates for use in Azure Websites Applications you need to upload a public Certificate.

C: Over time, multiple versions of TLS have been released to mitigate different vulnerabilities. TLS 1.2 is the most current version available for apps running on Azure App Service.

Incorrect Answers:

B: We need support the http url as well.

Note:

WebApp1 is an Azure web app that is accessible by using <https://litwareinc.com> and <http://www.litwareinc.com>.

References:

<https://docs.microsoft.com/en-us/azure/app-service/app-service-web-configure-tls-mutual-auth>

<https://azure.microsoft.com/en-us/updates/app-service-and-functions-hosted-apps-can-now-update-tls-versions/>

NEW QUESTION 15

HOTSPOT

You need to create Role1 to meet the platform protection requirements.

How should you complete the role definition of Role1? To answer, select the appropriate options in the answer area.

NOTE: Each correct selection is worth one point.

Hot Area:

Answer Area

```
(
  "Name" | "Role1",
  "Id" | "11111111-1111-1111-1111-111111111111",
  "IsCustom" : true,
  "Description": "VM storage operator"
  "Actions" : [
    [
      "Microsoft.Compute/
      Microsoft.Resources/
      Microsoft.Storage/
    ],
    "NotActions": [
      ],
    "AssignableScopes" : [
      ]
  ]
}
```

	▼
"Microsoft.Compute/	
"Microsoft.Resources/	
"Microsoft.Storage/	

	▼
disks/*",	
storageAccounts/*",	
virtualMachines/disks/*",	

- A. Mastered
- B. Not Mastered

Answer: A

Explanation:

Scenario: A new custom RBAC role named Role1 must be used to delegate the administration of the managed disks in Resource Group1. Role1 must be available only for Resource Group1.

Azure RBAC template managed disks "Microsoft.Storage/" References:

<https://blogs.msdn.microsoft.com/azureedu/2017/02/11/new-managed-disk-storage-option-for-your-azure-vms/>



NEW QUESTION 16

DRAG DROP

You need to configure SQLDB1 to meet the data and application requirements.

Which three actions should you recommend be performed in sequence? To answer, move the appropriate actions from the list of actions to the answer area and arrange them in the correct order.

Select and Place:

Actions	Answer Area
From the Azure portal, create an Azure AD administrator for LitwareSQLServer1.	
In SQLDB1, create contained database users.	
Connect to SQLDB1 by using Microsoft SQL Server Management Studio (SSMS).	 
In Azure AD, create a system-assigned managed identity.	
In Azure AD, create a user-assigned managed identity.	

- A. Mastered
- B. Not Mastered

Answer: A

Explanation:

Step 1: Connect to SQLDB1 by using Microsoft SQL Server Management Studio (SSMS)

Step 2: In SQLDB1, create contained database users.

Create a contained user in the database that represents the VM's system-assigned identity.

Step 3: In Azure AD, create a system-assigned managed identity.

A system-assigned identity for a Windows virtual machine (VM) can be used to access an Azure SQL server. Managed Service Identities are automatically managed by Azure and enable you to authenticate to services that support Azure AD authentication, without needing to insert credentials into your code.

References:

<https://docs.microsoft.com/en-us/azure/active-directory/managed-identities-azure-resources/tutorial-windows-vm-access-sql>

Question Set 2

NEW QUESTION 18

You have an Azure subscription that contains an Azure key vault named Vault1.

In Vault1, you create a secret named Secret1.

An application developer registers an application in Azure Active Directory (Azure AD). You need to ensure that the application can use Secret1.

What should you do?

- A. In Azure AD, create a role.
- B. In Azure Key Vault, create a key.
- C. In Azure Key Vault, create an access policy.
- D. In Azure AD, enable Azure AD Application Proxy.

Answer: A

Explanation:

Azure Key Vault provides a way to securely store credentials and other keys and secrets, but your code needs to authenticate to Key Vault to retrieve them.

Managed identities for Azure resources overview makes solving this problem simpler, by giving Azure services an automatically managed identity in Azure Active Directory (Azure AD). You can use this identity to authenticate to any service that supports Azure AD authentication, including Key Vault, without having any credentials in your code.

Example: How a system-assigned managed identity works with an Azure VM

After the VM has an identity, use the service principal information to grant the VM access to Azure resources. To call Azure Resource Manager, use role-based access control (RBAC) in Azure AD to assign the appropriate role to the VM service principal. To call Key Vault, grant your code access to the specific secret or key in Key Vault.

References:

<https://docs.microsoft.com/en-us/azure/key-vault/quick-create-net>

<https://docs.microsoft.com/en-us/azure/active-directory/managed-identities-azure-resources/overview>

NEW QUESTION 22

You have an Azure SQL database.

You implement Always Encrypted.

You need to ensure that application developers can retrieve and decrypt data in the database.

Which two pieces of information should you provide to the developers? Each correct answer presents part of the solution.

NOTE: Each correct selection is worth one point.

- A. a stored access policy
- B. a shared access signature (SAS)
- C. the column encryption key
- D. user credentials
- E. the column master key

Answer: CE

Explanation:

Always Encrypted uses two types of keys: column encryption keys and column master keys. A column encryption key is used to encrypt data in an encrypted column. A column master key is a key-protecting key that encrypts one or more column encryption keys.

References:

<https://docs.microsoft.com/en-us/sql/relational-databases/security/encryption/always-encrypted-database-engine>

NEW QUESTION 27

You have a hybrid configuration of Azure Active Directory (Azure AD).

All users have computers that run Windows 10 and are hybrid Azure AD joined.

You have an Azure SQL database that is configured to support Azure AD authentication.

Database developers must connect to the SQL database by using Microsoft SQL Server Management Studio (SSMS) and authenticate by using their on-premises Active Directory account.

You need to tell the developers which authentication method to use to connect to the SQL database from SSMS. The solution must minimize authentication prompts.

Which authentication method should you instruct the developers to use?

- A. SQL Login
- B. Active Directory – Universal with MFA support
- C. Active Directory – Integrated
- D. Active Directory – Password

Answer: C

Explanation:

Azure AD can be the initial Azure AD managed domain. Azure AD can also be an on-premises Active Directory Domain Services that is federated with the Azure AD.

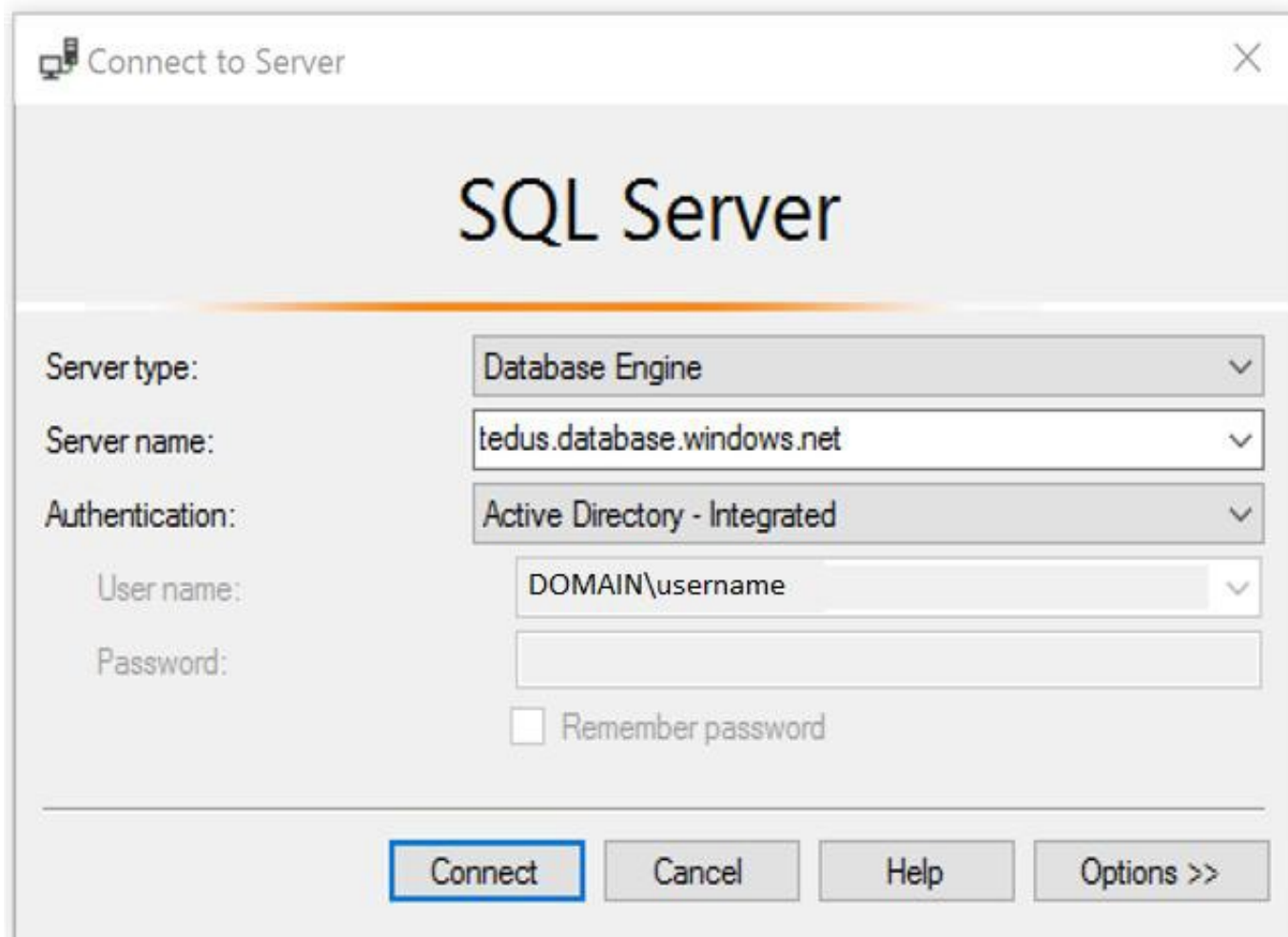
Using an Azure AD identity to connect using SSMS or SSDT

The following procedures show you how to connect to a SQL database with an Azure AD identity using SQL Server Management Studio or SQL Server Database Tools.

Active Directory integrated authentication

Use this method if you are logged in to Windows using your Azure Active Directory credentials from a federated domain.

1. Start Management Studio or Data Tools and in the Connect to Server (or Connect to Database Engine) dialog box, in the Authentication box, select Active Directory - Integrated. No password is needed or can be entered because your existing credentials will be presented for the connection.



2. Select the Options button, and on the Connection Properties page, in the Connect to database box, type the name of the user database you want to connect to. (The AD domain name or tenant ID" option is only supported for Universal with MFA connection options, otherwise it is greyed out.)

References:

<https://github.com/MicrosoftDocs/azure-docs/blob/master/articles/sql-database/sql-database-aad-authentication-configure.md>

NEW QUESTION 28

You have an Azure SQL Database server named SQL1.

You plan to turn on Advanced Threat Protection for SQL1 to detect all threat detection types. Which action will Advanced Threat Protection detect as a threat?

- A. A user updates more than 50 percent of the records in a table.

- B. A user attempts to sign as select * from table1.
- C. A user is added to the db_owner database role.
- D. A user deletes more than 100 records from the same table.

Answer: B

Explanation:

Advanced Threat Protection can detect potential SQL injections: This alert is triggered when an active exploit happens against an identified application vulnerability to SQL injection. This means the attacker is trying to inject malicious SQL statements using the vulnerable application code or stored procedures.

References:

<https://docs.microsoft.com/en-us/azure/sql-database/sql-database-threat-detection-overview>

NEW QUESTION 29

.....

Thank You for Trying Our Product

* 100% Pass or Money Back

All our products come with a 90-day Money Back Guarantee.

* One year free update

You can enjoy free update one year. 24x7 online support.

* Trusted by Millions

We currently serve more than 30,000,000 customers.

* Shop Securely

All transactions are protected by VeriSign!

100% Pass Your az-500 Exam with Our Prep Materials Via below:

<https://www.certleader.com/az-500-dumps.html>