

Exam Questions 400-007

Cisco Certified Design Expert (CCDE v3.0) Written Exam

<https://www.2passeasy.com/dumps/400-007/>



NEW QUESTION 1

An enterprise network has two core routers that connect to 200 distribution routers and uses full-mesh IBGP peering between these routers as its routing method. The distribution routers are experiencing high CPU utilization due to the BGP process. Which design solution is the most cost effective?

- A. Implement route reflectors on the two core routers
- B. Increase the memory on the core routers
- C. Implement e BGP between the core and distribution routers
- D. Increase the memory on the distribution routers
- E. Increase bandwidth between the core routers

Answer: A

NEW QUESTION 2

Which solution component helps to achieve comprehensive threat protection and compliance for migration to multicloud SDX architectures?

- A. system-oriented architecture
- B. OSASE architecture
- C. platform-oriented architecture
- D. SASE architecture

Answer: D

NEW QUESTION 3

Which management category is not part of FCAPS framework?

- A. Configuration
- B. Security
- C. Performance
- D. Authentication
- E. Fault-management

Answer: D

NEW QUESTION 4

You have been tasked with designing a data center interconnect to provide business continuity. You want to encrypt the traffic over the DCI using IEEE 802.1AE MACsec to prevent the deployment of any firewall or IPS. Which two interconnect technologies support MACsec? (Choose two.)

- A. EoMPLS
- B. MPLS Layer 3 VPN
- C. DMVPN
- D. GET VPN
- E. KVPLS

Answer: AE

NEW QUESTION 5

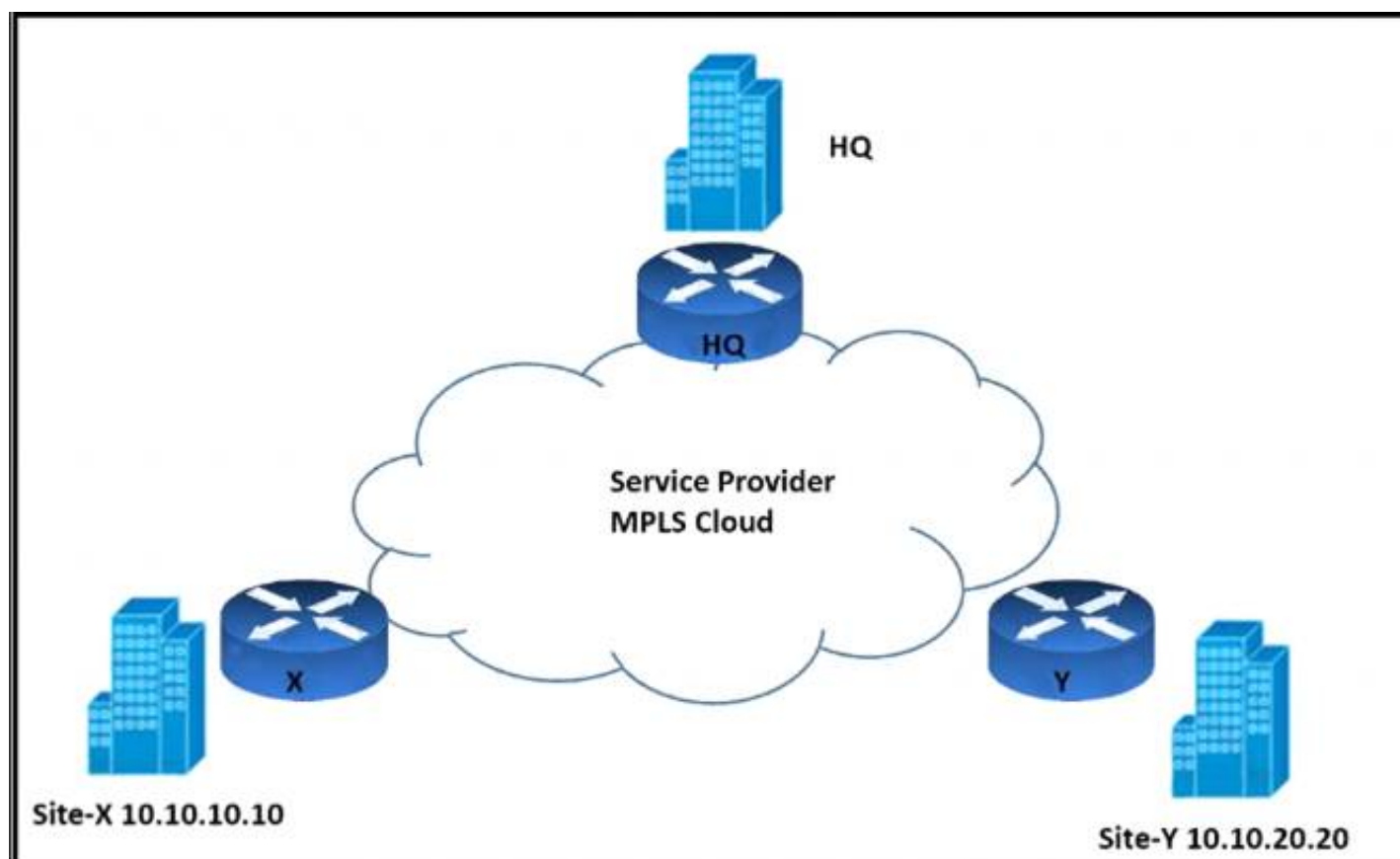
According to the CIA triad principles for network security design, which principle should be priority for a Zero Trust network?

- A. requirement for data-in-motion encryption and 2FA authentication
- B. requirement for data-at-rest encryption for user identification within the VPN termination hardware
- C. categorization of systems, data, and enterprise BYOD assets that are connected to network zones based on individual privacy needs
- D. ensuring that authorized users have high-availability system access from defined zones to defined systems or zones

Answer: A

NEW QUESTION 6

Refer to the exhibit.



An architect must design an enterprise WAN that connects the headquarters with 22 branch offices. The number of remote sites is expected to triple in the next three years. The final solution must comply with these requirements:

- Only the loopback address of each of the enterprise CE X and Y routers must be advertised to the interconnecting service provider cloud network.
- The transport layer must carry the VPNv4 label and VPN payload over the MP-BGP control plane.
- The transport layer must not be under service provider control.

Which enterprise WAN transport virtualization technique meets the requirements?

- A. EIGRP Over the Top
- B. MPLS over BGP over multipoint GRE
- C. DMVPN per VRF
- D. point-to-point GRE per VRF

Answer: B

NEW QUESTION 7

As a network designer you need to support an enterprise with hundreds of remote sites connected over a single WAN network that carries different types of traffic, including VoIP, video, and data applications which of following design considerations will not impact design decision?

- A. Focus on the solution instead of the problem, which helps to reduce downtime duration
- B. The location of the data collection
- C. What direction the data or flows should be metered
- D. Identify traffic types and top talkers over this link

Answer: A

NEW QUESTION 8

A customer migrates from a traditional Layer 2 data center network into a new SDN-based spine-and-leaf VXLAN EVPN data center within the same location. The networks are joined to enable host migration at Layer 2. What is the final migration step after hosts have physically migrated to have traffic flowing through the new network without changing any host configuration?

- A. Shut down legacy Layer 3 SVI
- B. clear ARP caches on all hosts being migrated and then configure the legacy VRRP address onto new VXLAN core switches
- C. Increase VRRP priorities on new infrastructure over legacy VRRP values, then shut down legacy SVIs
- D. Shut down legacy infrastructure to allow VXLAN gateways to become active
- E. Shut down legacy Layer 3 SVIs and activate new preconfigured Layer 3 SVIs on VXLAN

Answer: D

NEW QUESTION 9

Sometimes SDN leverages various overlay networking technologies to create layer(s) of network abstraction. What describes an overlay network?

- A. It transmits packets that traverse over network devices like switches and routers
- B. It encapsulates packets at source and destination, which incurs additional overhead
- C. Packet delivery and reliability occurs at Layer 3 and Layer 4
- D. It is responsible for the delivery of packets; NAT- or VRF-based segregation is required

Answer: B

NEW QUESTION 10

A healthcare customer requested that SNMP traps must be sent over the MPLS Layer 3 VPN service. Which protocol must be enabled?

- A. SNMPv3

- B. Syslog
- C. Syslog TLS
- D. SNMPv2
- E. SSH

Answer: A

NEW QUESTION 10

What statement describes the application layer as defined in the software-defined networking architecture?

- A. This layer is responsible for collecting the network status such as network usage and topology.
- B. This layer contains programs that communicate their desired network behavior to controllers.
- C. This layer is responsible for handling packets based on the rules provided by the controller.
- D. This layer processes the instructions and requirements sent by networking components.

Answer: B

NEW QUESTION 11

Which design consideration is valid when you contrast fabricPath and trill?

- A. FabricPath uses IS-IS, but TRILL uses VxLAN
- B. FabricPath permits active-active FHRP and TRILL support anycast gateway.
- C. FabricPath Permits ECMP, but TRILL does not
- D. FabricPath permits active-active mode, but TRILL supports only active-standby mode.

Answer: B

NEW QUESTION 13

Refer to the exhibit.



Company XYZ BGP topology is as shown in the diagram. The interface on the LA router connected toward the 10.1.5.0/24 network is faulty and is going up and down, which affects the entire routing domain. Which routing technique can be used in the routing policy design so that the rest of the network is not affected by the flapping issue?

- A. Use route dampening on LA router for the 10.1.5.0/24 network so that it does not get propagated when it flaps up and down
- B. Use route filtering on Chicago router to block the 10.1.5.0/24 network from coming in from the LA router
- C. Use route filtering on LA router to block the 10.1.5.0/24 network from getting propagated toward Chicago and New York
- D. Use route aggregation on LA router to summarize the 10.1.4.0/24, 10.1.5.0/24, 10.1.6.0/24, and 10.1.7.0/24 networks toward Chicago

Answer: D

NEW QUESTION 18

Which architecture does not require an explicit multicast signaling protocol, such as PIM or P2MP, to signal the multicast state hop-by-hop, but instead uses a link state protocol to advertise the multicast forwarding state?

- A. Binary indexed explicit routing
- B. Binary intermediate enhanced routing
- C. Bit indexed explicit replication
- D. Bi-directional implicit replication

Answer: C

NEW QUESTION 23

Company XYZ uses an office model where the employees can use any open desk and plug their laptops in. They want to authenticate the end users using their domain username and password before allowing them access to the network. The design must also accommodate the ability of controlling traffic within the same group or subnet if a macro (or micro) segmentation-based model is adopted in the future. Which protocol can be recommended for this design to authenticate end users?

- A. LDAP
- B. EAP
- C. TACACS+
- D. RADIUS

Answer: D

Explanation:

<https://www.networkstraining.com/what-is-cisco-ise/>

NEW QUESTION 25

Company XYZ, a global content provider, owns data centers on different continents. Their data center design involves a standard three-layer design with a Layer 3-only core. VRRP is used as the FHRP. They require VLAN extension across access switches in all data centers, and they plan to purchase a Layer 2 interconnection between two of their data centers in Europe in the absence of other business or technical constraints. Which termination point is optimal for the Layer 2 interconnection?

- A. at the core layer, to offer the possibility to isolate STP domains
- B. at the access layer because the STP root bridge does not need to align with the VRRP active node
- C. at the core layer because all external connections must terminate there for security reasons
- D. at the aggregation layer because it is the Layer 2 to Layer 3 demarcation point

Answer: D

NEW QUESTION 30

A network architect must redesign a service provider edge, where multiservice and multitenant PEs are currently present. Which design feature should be minimized in the new design to achieve reliability?

- A. bridging
- B. fate sharing
- C. redundancy
- D. unicast overlay routing

Answer: B

NEW QUESTION 31

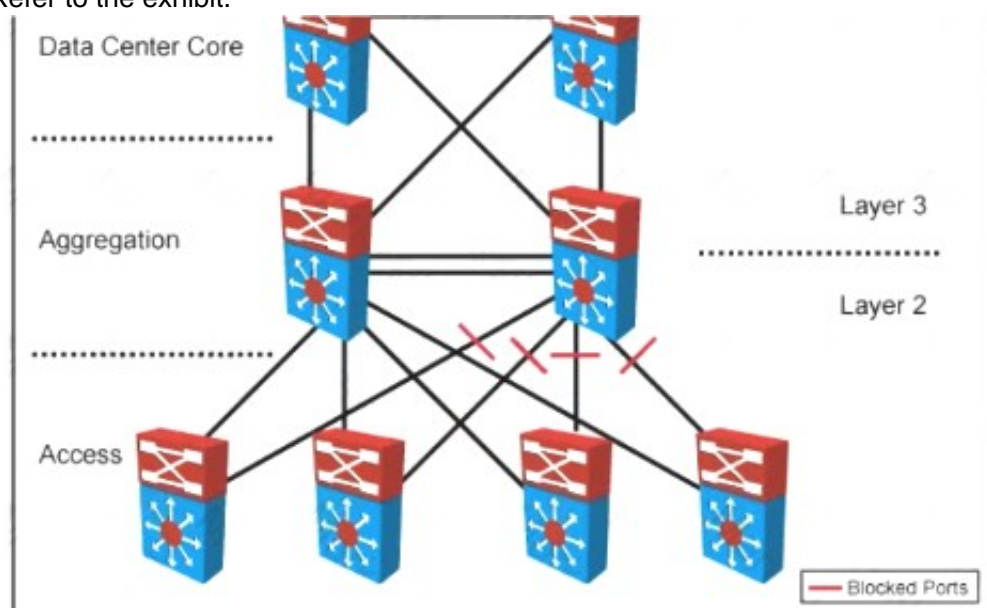
Which Interconnectivity method offers the fastest convergence in the event of a unidirectional issue between three Layer 3 switches connected together with routed links in the same rack in a data center?

- A. Copper Ethernet connectivity with BFD enabled
- B. Copper Ethernet connectivity with UDLD enabled
- C. Fiber Ethernet connectivity with BFD enabled
- D. Fiber Ethernet connectivity with UDLD enabled

Answer: C

NEW QUESTION 35

Refer to the exhibit.



Your company designed a network to allow server VLANs to span all access switches in a data center. In the design, Layer 3 VLAN interfaces and HSRP are configured on the aggregation switches. Which two features improve STP stability within the network design? (Choose two.)

- A. BPDU guard on access ports
- B. BPDU guard on the aggregation switch downlinks toward access switches
- C. root guard on the aggregation switch downlinks toward access switches
- D. root guard on access ports
- E. edge port on access ports
- F. access switch pairs explicitly determined to be root and backup root bridges

Answer: AE

NEW QUESTION 39

You are using iSCSI to transfer files between a 10 Gigabit Ethernet storage system and a 1 Gigabit Ethernet server. The performance is only approximately 700 Mbps, and output drops are occurring on the server switch port. Which action will improve performance in a cost-effective manner?

- A. Change the protocol to CIFS.
- B. Increase the queue to at least 1 GB
- C. Use a WRED random drop policy
- D. Enable the TCP Nagle algorithm on the receiver

Answer: A

NEW QUESTION 42

You are designing the routing design for two merging companies that have overlapping IP address space. Which of these must you consider when developing the routing and NAT design?

- A. Local to global NAT translation is done after routing
- B. Global to local NAT translation is done before routing.
- C. Local to global NAT translation is done before policy-based routing
- D. Global to local NAT translation is done after policy-based routing.

Answer: B

NEW QUESTION 44

Which two conditions must be met for EIGRP to maintain an alternate loop-free path to a remote network? (Choose two.)

- A. The Reported Distance from a successor is lower than the local Feasible Distance.
- B. The Reported Distance from a successor is higher than the local Feasible Distance.
- C. The feasibility condition does not need to be met.
- D. The Feasible Distance from a successor is lower than the local Reported Distance.
- E. A feasible successor must be present.

Answer: AE

NEW QUESTION 45

Which two statements describe the usage of the IS-IS overload bit technique? (Choose two)

- A. If overload-bit is set on a Level 2 intermediate system, the other Level 2 intermediate systems in the topology will stop using the overloaded IS to forward Level 2 traffic However, the intermediate system can still forward Level 1 traffic
- B. It can be set in intermediate systems (IS-IS routers) to prioritize control plane CSNP packets.
- C. It can be used to automatically synchronize the link-state database between Level 1 intermediate systems
- D. It can be set in intermediate systems (IS-IS routers) to avoid traffic black holes until routing protocols are fully converged after a reload operation.
- E. It can be set in intermediate systems (IS-IS routers) to attract transit traffic from other intermediate systems

Answer: AD

NEW QUESTION 50

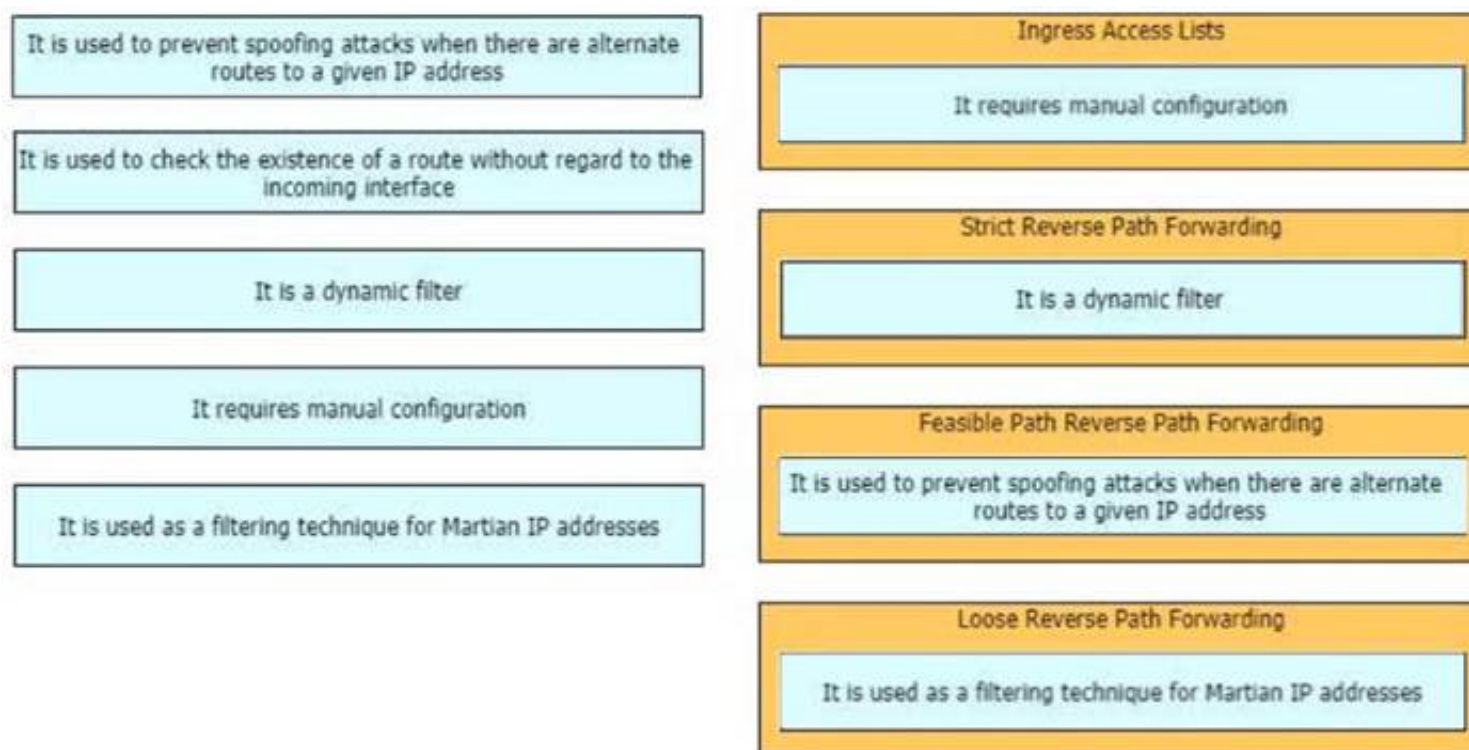
Drag and drop the design characteristics from the left onto the correct network filter techniques on the right. Not all options are used.

It is used to prevent spoofing attacks when there are alternate routes to a given IP address	Ingress Access Lists target 1
It is used to check the existence of a route without regard to the incoming interface	Strict Reverse Path Forwarding target 2
It is a dynamic filter	Feasible Path Reverse Path Forwarding target 3
It requires manual configuration	Loose Reverse Path Forwarding target 4
It is used as a filtering technique for Martian IP addresses	

- A. Mastered
- B. Not Mastered

Answer: A

Explanation:



NEW QUESTION 52

Company XYZ wants to redesign the Layer 2 part of their network and wants to use all available uplinks for increased performance. They also want to have end host reachability supporting conversational learning. However, due to design constraints, they cannot implement port-channel on the uplinks. Which other technique can be used to make sure the uplinks are in active/active state?

- A. TRILL
- B. LISP
- C. MSTP
- D. switch stack

Answer: B

NEW QUESTION 56

Company XYZ is designing the IS-IS deployment strategy for their multiarea IS-IS domain. They want IS-IS neighbour relationships to be minimized on each network segment and want to optimize the size of the IS-IS LSDB on each router. Which can design can be used to meet these requirements?

- A. Design all routers as Level 2 router
- B. Set the links between the routers as Level 1 with the area
- C. Design the network so that the routers connecting to other areas are Level 2 routers and internal routers are Level 1
- D. Design the network so that all routers are Level 1 routers
- E. Design the network so that the routers connecting to other areas are Level 1/Level 2 routers and internal routers are Level 1

Answer: D

NEW QUESTION 60

Company XYZ wants to deploy OSPF. The design plan requires that two OSPF networks be mutually redistributed at multiple locations and ensure end-to-end connectivity to all of the company's networks Which technology can be used to fulfill the requirements while avoiding the creation of routing loops?

- A. Create a virtual link between ASBRs.
- B. Change the router ID for both ASBRs.
- C. Redistribute routes as external type 2 routes.
- D. Use route maps on ASBRs to filter routes with tags so they are not redistributed.

Answer: D

Explanation:

<https://www.cisco.com/c/en/us/support/docs/ip/open-shortest-path-first-ospf/4170-ospfprocesses.html>

NEW QUESTION 64

What are two examples of business goals to be considered when a network design is built? (Choose two.)

- A. standardize resiliency
- B. minimize operational costs
- C. integrate endpoint posture
- D. ensure faster obsolescence
- E. reduce complexity

Answer: BE

NEW QUESTION 69

An enterprise organization currently provides WAN connectivity to their branch sites using MPLS technology, and the enterprise network team is considering rolling out SD-WAN services for all sites.

With regards to the deployment planning, drag and drop the actions from the left onto the corresponding steps on the right.

Select deployment models between virtual server software and hardware-based SD-WAN appliances.	step 1
Conduct a pilot test to observe and record unexpected issues.	step 2
Make an assessment of running protocols and application usage in the network.	step 3
Evaluate existing circuits and performance to get details of connectivity cost and reliability.	step 4
Layout transport plan based on business prioritizes traffic and the unique bandwidth requirements of each specific application.	step 5
Understand the traffic monitoring requirements and capabilities.	step 6

- A. Mastered
- B. Not Mastered

Answer: A

Explanation:

Table Description automatically generated with medium confidence

NEW QUESTION 71

An enterprise has identified these causes for inefficient CAPEX spending:

- CAPEX planning is driven by technology and not by business objectives.
- The CAPEX planning team lacks the data it needs to perform due diligence tasks.
- The organizational structure lacks sufficient accountability and incentives.

Which corporate cultural change contributes to improving the effectiveness of CAPEX spending?

- A. Build a financial control function that delivers high-quality reports on operational expenses for business insight and financial reporting.
- B. CxO-level staff must have a full technical understanding but the should not trust their technical leaders fully.
- C. Adopt new organizational models that promote real accountability for RO
- D. not just revenu
- E. EBITDA, and cash.
- F. Marketing and product management divisions must reduce their CAPEX budgets significantly to drive the change.

Answer: C

NEW QUESTION 75

Which two actions ensure voice quality in a branch location with a low-speed, high-latency WAN connection? (Choose two.)

- A. Increase WAN bandwidth
- B. Increase memory branch switch.
- C. Fragment data packets.
- D. Replace any electrical links with optical links
- E. Prioritize voice packets

Answer: CE

NEW QUESTION 76

Which two technologies enable multilayer segmentation? (Choose two.)

- A. policy-based routing
- B. segment routing
- C. data plane markings
- D. firewalls
- E. filter lists

Answer: AD

NEW QUESTION 80

Which purpose of a dynamically created tunnel interface on the design of IPv6 multicast services Is true?

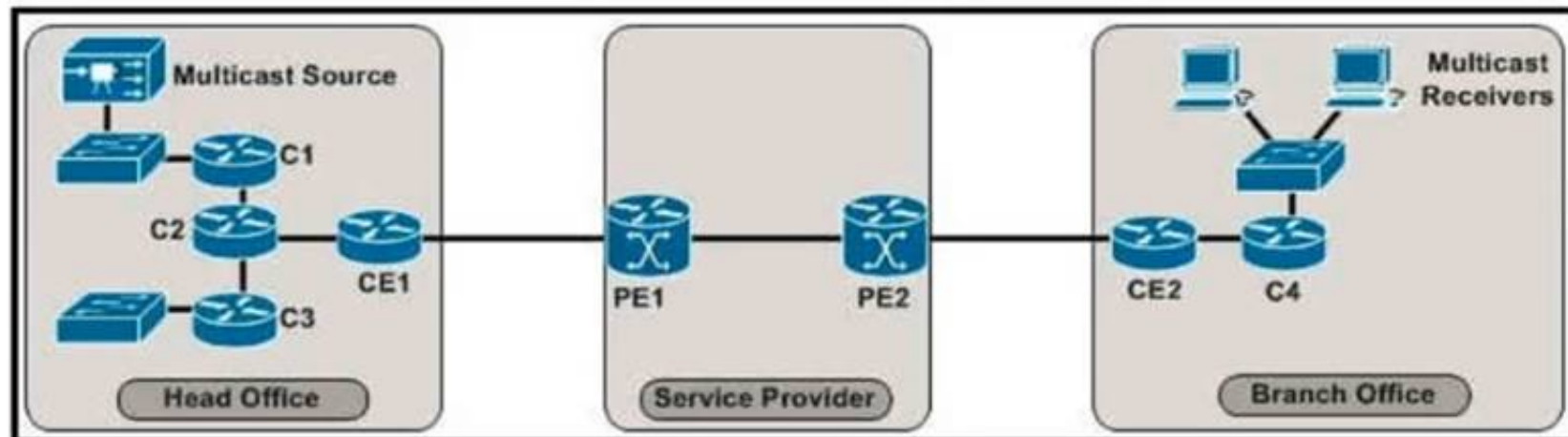
- A. first-hop router registration to the RP
- B. multicast client registration to the RP
- C. multicast source registration to the RP

D. transport of all IPv6 multicast traffic

Answer: D

NEW QUESTION 82

Refer to the exhibit.



The enterprise customer wants to stream one-way video from their head office to eight branch offices using multicast. Their current service provider provides a Layer3 VPN solution and manages the CE routers, but they do not currently support multicast. Which solution quickly allows this multicast traffic to go through while allowing for future scalability?

- A. Enable a GRE tunnel between nodes CE1 and CE2
- B. Enable a GRE tunnel between nodes C2 and C4
- C. Enable a GRE tunnel between nodes C1 and C4
- D. Implement hub and spoke MPLS VPN over DMVPN (also known as 2547o DMVPN) between CE1 and CE2
- E. The service provider must provide a Draft Rosen solution to enable a GRE tunnel between nodes PE1 and PE2

Answer: B

NEW QUESTION 83

A service provider recently migrated to an SD-WAN solution for delivering WAN connections to its customers. One of the main challenges with the SD-WAN deployment is that branch site volume increases every year, which causes management complexity. Which action resolves the issue?

- A. Implement a scalable network management system to manage all sites.
- B. Adopt a well-structured SD-WAN service management lifecycle model
- C. Build a service orchestration platform on top of the network controller
- D. Set up a dedicated team to monitor and provision new customers

Answer: C

NEW QUESTION 87

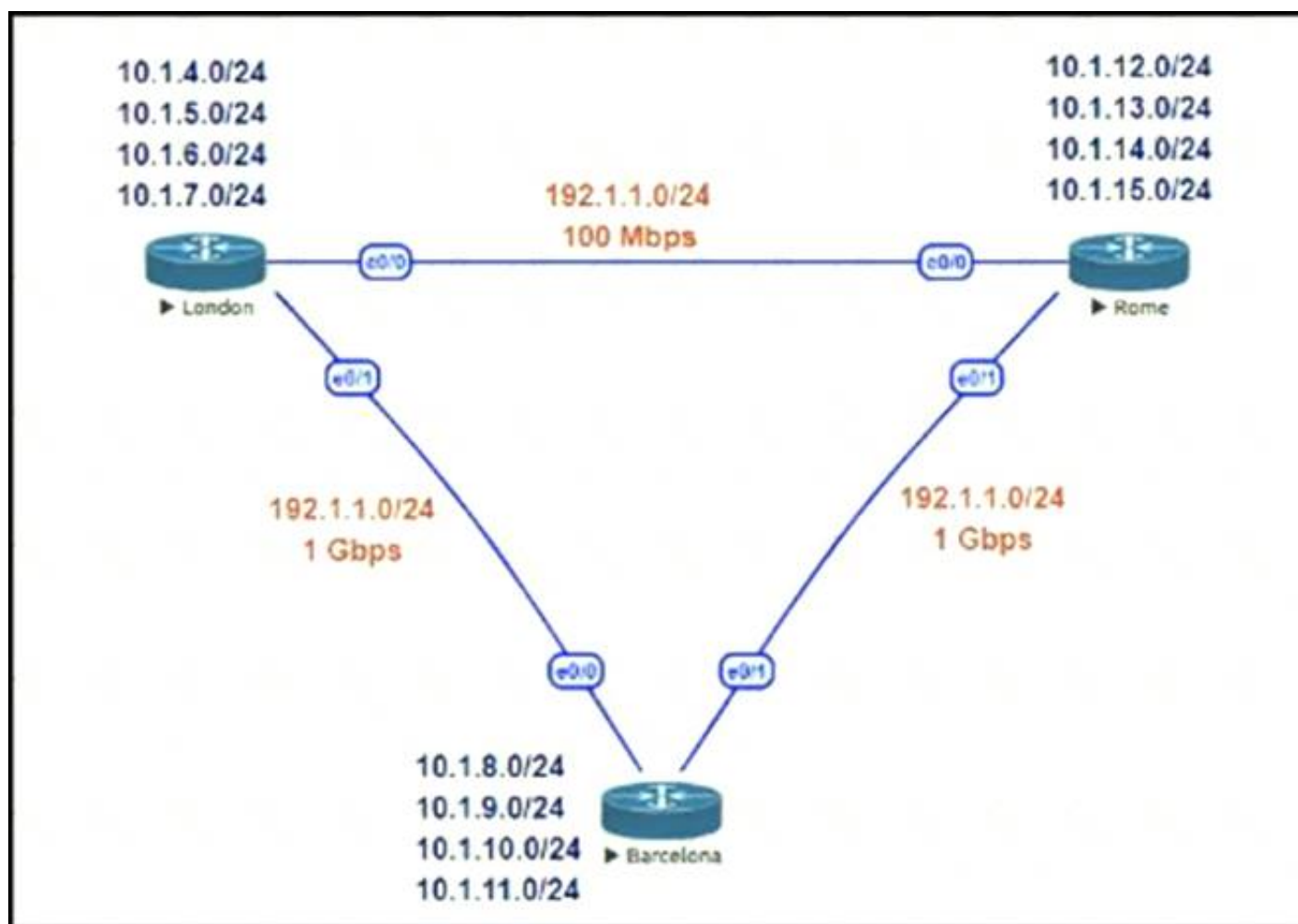
Which two data plane hardening techniques are true? (Choose two)

- A. warning banners
- B. redundant AAA servers
- C. Control Plane Policing
- D. SNMPv3
- E. infrastructure ACLs
- F. disable unused services
- G. routing protocol authentication

Answer: EF

NEW QUESTION 90

Refer to the exhibit.



This network is running EIGRP as the routing protocol and the internal networks are being advertised in EIGRP. Based on the link speeds, all traffic between London and Rome is getting propagated via Barcelona and the direct link between London and Rome is not being utilized under normal working circumstances. The EIGRP design should allow for efficiency in the routing table by minimizing the routes being exchanged. The link between London and Rome should be utilized for specific routes. Which two steps accomplish this task? (Choose two.)

- A. Configure EIGRP route summarization on all the interfaces to summarize the internal LAN routes
- B. Filter the routes on the link between London and Barcelona
- C. Filter the routes on the link between London and Rome
- D. Configure route leaking of summary routes on the link between London and Rome

Answer: AD

NEW QUESTION 93

Refer to the table.

CONNECTIVITY	CAPEX	OPEX ANNUAL	INSTALLATION FEE	TERM
DWDM over dark fiber	\$250,000	\$100,000	\$30,000	12 months
CWDM over dark fiber	\$150,000	\$100,000	\$25,000	18 months
MPLS wires only	\$50,000	\$80,000	\$5,000	24 months
Metro Ethernet	\$45,000	\$100,000	\$5,000	36 months

A customer investigates connectivity options for a DCI between two production data centers to aid a large-scale migration project. The solution must provide a single 10G connection between locations and be able to run its own varying QoS profiles without service provider interaction based on the migration stages. All connectivity methods are at 10 Gbps. Which transport technology costs the least if the connectivity is required for just one year?

- A. MPLS wires only
- B. CWDM over dark fiber
- C. DWDM over dark fiber
- D. Metro Ethernet

Answer: A

NEW QUESTION 95

Company XYZ is running a redundant private WAN network using OSPF as the underlay protocol. The current design accommodates for redundancy in the network, but it is taking over 30 seconds for the network to reconverge upon failure. Which technique can be implemented in the design to detect such a failure in a subsecond?

- A. STP
- B. fast hello
- C. OSPF LFA
- D. BFD
- E. flex links

Answer: D

NEW QUESTION 100

Which actions are performed at the distribution layer of the three-layer hierarchical network design model? (Choose two)

- A. Fast transport
- B. Reliability
- C. QoS classification and marking boundary
- D. Fault isolation
- E. Redundancy and load balancing

Answer: DE

NEW QUESTION 104

An IT service provider is upgrading network infrastructure to comply with PCI security standards. The network team finds that 802.1X and VPN authentication based on locally-significant certificates are not available on some legacy phones.

Which workaround solution meets the requirement?

- A. Replace legacy phones with new phones because the legacy phones will lose trust if the certificate is renewed.
- B. Enable phone VPN authentication based on end-user username and password.
- C. Temporarily allow fallback to TLS 1.0 when using certificates and then upgrade the software on legacy phones.
- D. Use authentication-based clear text password with no EAP-MD5 on the legacy phones.

Answer: B

NEW QUESTION 106

A multinational enterprise integrates a cloud solution with these objectives

- Achieve seamless connectivity across different countries and regions
- Extend data center and private clouds into public clouds and provider-hosted clouds

What are two outcomes of deploying data centers and fabrics that interconnect different cloud networks? (Choose two.)

- A. enhanced security
- B. data and network ownership
- C. ability to place workloads across clouds
- D. centralized visibility
- E. unidirectional workload mobility across the cloud

Answer: AC

NEW QUESTION 111

Which design benefit of bridge assurance is true?

- A. It supposes a spanning-tree topology change upon connecting and disconnecting a station on a port
- B. It prevents switched traffic from traversing suboptimal paths on the network.
- C. It allows small, unmanaged switches to be plugged into ports of access switches without the risk of switch loops.
- D. It prevents switch loops caused by unidirectional point-to-point link condition on Rapid PVST + and MST

Answer: D

NEW QUESTION 112

Which two pain points are the most common for container technology adoption? (Choose two)

- A. Performance
- B. Security
- C. Cost
- D. Container deployment
- E. Skilled staff
- F. Compliance

Answer: DE

NEW QUESTION 116

An engineer is designing a DMVPN network where OSPF has been chosen as the routing protocol A spoke-to-spoke 'J'ita propagation model must be set up Which two design considerations must be taken into account? (Choose two)

- A. Configure all the sites as network type broadcast
- B. The network type on all sites should be point-to-multipoint
- C. The network type should be point-to-multipoint for the hub and point-to-point for the spokes.
- D. The hub should be set as the DR by specifying the priority to 255.
- E. The hub should be the DR by changing the priority of the spokes to 0.

Answer: AE

NEW QUESTION 118

Company XYZ plans to run OSPF on a DMVPN network. They want to use spoke-to-spoke tunnels in the design What is a drawback or concern in this type of design?

- A. Additional host routes will be inserted into the routing tables
- B. Manual configuration of the spokes with the appropriate priority will be needed

- C. There will be split-horizon issue at the hub
- D. Manual configuration of the spoke IP address on the hub will be needed

Answer: B

NEW QUESTION 123

A multicast network is using Bidirectional PIM. Which two combined actions achieve high availability so that two RPs within the same network can act in a redundant manner? (Choose two)

- A. Use two phantom RP addresses
- B. Manipulate the administration distance of the unicast routes to the two RPs
- C. Manipulate the multicast routing table by creating static mroutes to the two RPs
- D. Advertise the two RP addresses in the routing protocol
- E. Use anycast RP based on MSDP peering between the two RPs
- F. Control routing to the two RPs through a longest match prefix

Answer: AF

Explanation:

<https://community.cisco.com/t5/networking-knowledge-base/rp-redundancy-with-pim-bidir-phantom-rp/ta-p/31>

NEW QUESTION 125

Company ABC uses IPv4-only. Recently they started deploying new endpoint devices. For operational reasons, IPv6 cannot be disabled on these new endpoint devices. Which security measure prevents the new endpoint from learning an IPv6 prefix from an attacker?

- A. Source Guard and Prefix Guard
- B. Router Advertisement Guard
- C. Prefix Guard
- D. Secure Neighbor Discovery

Answer: B

NEW QUESTION 127

A product manufacturing organization is integrating cloud services into their IT solution. The IT team is working on the preparation phase of the implementation approach, which includes the Define Strategy step. This step defines the scope of IT, the application, and the service. What is one topic that should be considered in the Define Strategy step?

- A. financial and governance models
- B. innovate and align with business according to volume
- C. due diligence and financial scenarios
- D. contingency exit strategy steps

Answer: D

NEW QUESTION 131

Which two factors provide multifactor authentication for secure access to applications and data, no matter where the users are or which devices they are on? (Choose two.)

- A. persona-based
- B. power-based
- C. push-based
- D. possession-based
- E. pull-based

Answer: CD

NEW QUESTION 133

An enterprise that runs numerous proprietary applications has major issues with its on-premises server estate hardware, to the point where business-critical functions are compromised. The enterprise accelerates plans to migrate services to the cloud. Which cloud service should be used if the enterprise wants to avoid hardware issues yet have control of its applications and operating system?

- A. SaaS
- B. PaaS
- C. IaaS
- D. hybrid cloud

Answer: C

NEW QUESTION 138

Which feature is supported by NETCONF but is not supported by SNMP?

- A. distinguishing between configuration data and operational data
- B. taking administrative actions
- C. collecting the status of specific fields
- D. changing the configuration of specific fields

Answer:

A

NEW QUESTION 140

A European national bank considers migrating its on-premises systems to a private cloud offering in a non-European location to significantly reduce IT costs. What is a primary factor prior to migration?

- A. data governance
- B. additional latency
- C. security
- D. cloud connectivity

Answer: C

NEW QUESTION 142

A key to maintaining a highly available network is building in the appropriate redundancy to protect against failure. This redundancy is carefully balanced with the inherent complexity of redundant systems. Which design consideration is relevant for enterprise WAN use cases when it comes to resiliency?

- A. Design in a way that expects outages and attacks on the network and its protected resources
- B. The design approach should consider simple and centralized management aspect
- C. Design in a way that it simplifies and improves ease of deployment
- D. Design automation tools wherever it is appropriate for greater visibility

Answer: A

NEW QUESTION 144

Which two statements explain the operation of BFD asynchronous mode? (Choose two)

- A. BFD asynchronous mode with echo packets combines the control packets and echo packets into a single packet.
- B. BFD asynchronous mode without echo packets uses control packets, and BFD asynchronous mode with echo packets does not.
- C. BFD asynchronous mode with and without echo packets use control packets.
- D. BFD asynchronous without echo packets has control packets sent back to the originating router, which echoes the control packet to detect failures.
- E. BFD asynchronous mode with echo packets uses separate control packets and echo packets.

Answer: CE

NEW QUESTION 145

You are designing a large-scale DMVPN network with more than 500 spokes using EIGRP as the IGP protocol Which design option eliminates potential tunnel down events on the spoke routers due to the holding time expiration?

- A. Increase the hold queue on the physical interface of the hub router.
- B. Increase the hold queue on the tunnel interface of the spoke routers
- C. Increase the hold queue on the tunnel interface of the hub router
- D. Apply QoS for pak_priority class
- E. Increase the hold queue on the physical interface of the spoke routers.

Answer: C

NEW QUESTION 146

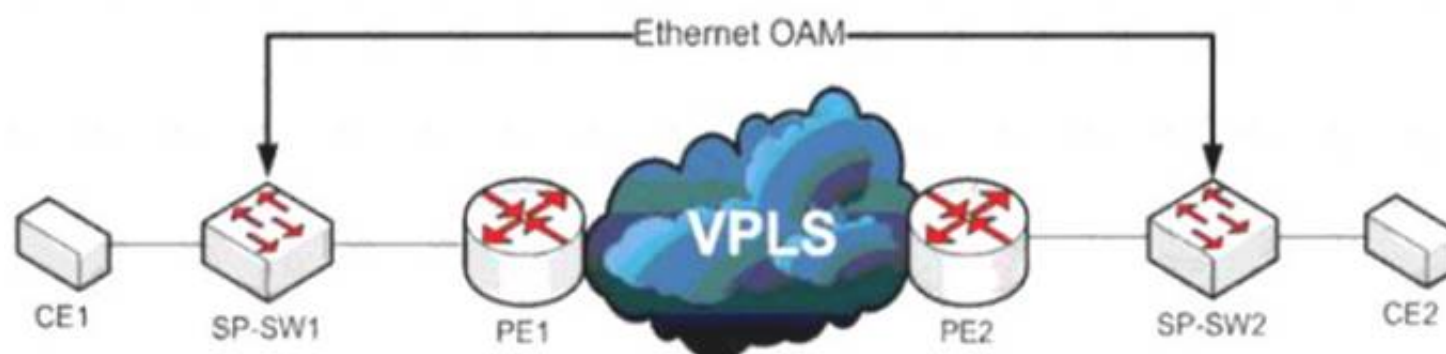
While designing a switched topology, in which two options is UplinkFast recommended? (Choose two)

- A. when switches of different spanning-tree types are connected (for example, 802.1d connecting to 802.1w)
- B. 802.1d connecting to 802.1w
- C. on distribution layer switches
- D. when hello timers are changed to more aggressive values
- E. on access layer switches
- F. on the core switches

Answer: AD

NEW QUESTION 149

Refer to the exhibit



A service provider has a requirement to use Ethernet OAM to detect end-to-end connectivity failures between SP-SW1 and SP-SW2 Which two ways to design this solution are true? (Choose two)

- A. Enable unicast heartbeat messages to be periodically exchanged between MEPs
- B. Enable Connectivity Fault Management on the SP switches

- C. Use upward maintenance endpoints on the SP switches
- D. Forward E-LMI PDUs over VPLS
- E. Forward LLD PDUs over the VPLS

Answer: BC

NEW QUESTION 154

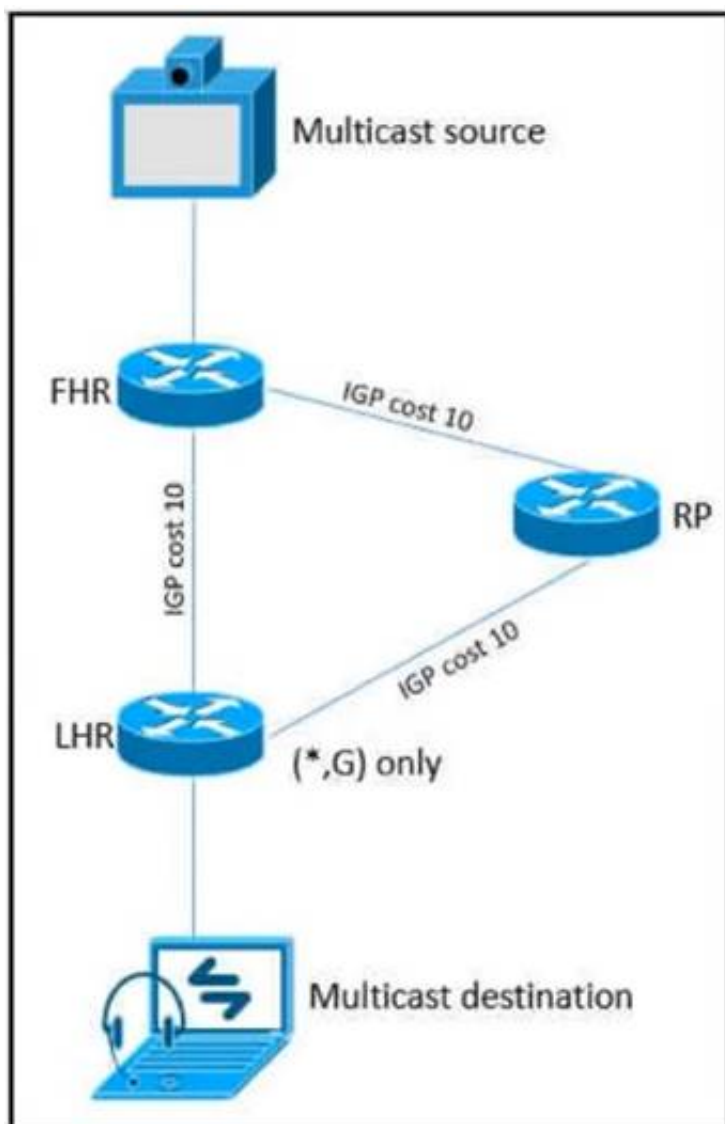
Which two possible drawbacks should you consider when introducing Network Functions Virtualization in a network design? (Choose two)

- A. Bandwidth utilization increases
- B. Traffic flows are suboptimal
- C. High-end routers are required to support NFV
- D. OpenFlow must be supported in the network
- E. An SDN orchestration layer is required to support NFV

Answer: CE

NEW QUESTION 157

Refer to the exhibit.



As part of a redesign project, you must predict multicast behavior. What happens to the multicast traffic received on the shared tree (*,G), if it is received on the LHR interface indicated*?

- A. It is dropped due to an unsuccessful RPF check against the multicast source
- B. It is switched given that no RPF check is performed
- C. It is switched due to a successful RPF check against the routing table
- D. It is dropped due to an unsuccessful RPF check against the multicast receiver.

Answer: A

Explanation:

<https://www.cisco.com/c/en/us/support/docs/ip/ip-multicast/16450-mcastguide0.html>

When a multicast packet arrives on an interface, the RPF process checks to ensure that this incoming interface is the outgoing interface used by unicast routing in order to reach the source of the multicast packet. This RPF check process prevents loops. Multicast routing does not forward a packet unless the source of the packet passes a RPF check. Once a packet passes this RPF check, multicast routing forwards the packet based only upon the destination address.

NEW QUESTION 160

Which two benefits can software defined networks provide to businesses? (Choose two.)

- A. provides additional redundancy
- B. decentralized management
- C. reduced latency
- D. enables innovation
- E. reduction of OpEx/CapEx
- F. meets high traffic demands

Answer: DE

NEW QUESTION 162

What are two examples of components that are part of an SDN architecture? (Choose two.)

- A. software plane
- B. control plane
- C. application plane
- D. management plane
- E. network plane

Answer: BD

NEW QUESTION 163

Which two characteristics apply to firewall transparent mode operations in a firewall solution design? (Choose two.)

- A. Changes in the existing IP addressing and subnets are required
- B. The firewall can participate actively on spanning tree.
- C. Multicast traffic can traverse the firewall.
- D. OSPF adjacencies can be established through the firewall
- E. The firewall acts like a router hop in the network.

Answer: CD

NEW QUESTION 165

Which main IoT migration aspect should be reviewed for a manufacturing plant?

- A. Sensors
- B. Security
- C. Applications
- D. Wi-Fi Infrastructure
- E. Ethernet Switches

Answer: A

NEW QUESTION 167

What are two advantages of controller-based networks versus traditional networks? (Choose two.)

- A. the ability to have forwarding tables at each device
- B. more flexible configuration per device
- C. more consistent device configuration
- D. programmatic APIs that are available per device
- E. the ability to configure the features for the network rather than per device

Answer: CE

NEW QUESTION 169

A green data center is being deployed and a design requirement is to be able to readily scale server virtualization Which IETF standard technology can provide this requirement?

- A. data center bridging
- B. unified fabric
- C. Transparent Interconnection of Lots of Links
- D. fabric path

Answer: C

NEW QUESTION 174

An architect receives a functional requirement for a NAC system from a customer security policy stating that if a corporate Wi-Fi device does not meet current AV definitions, then it cannot access the corporate network until the definitions are updated. Which component should be built into the NAC design?

- A. posture assessment with remediation VLAN
- B. quarantine SGTs
- C. dACLs with SGTs
- D. quarantine VLAN

Answer: A

NEW QUESTION 178

Drag and drop the design use cases from the left onto the correct uRPF techniques used to prevent spoofing attacks Not all options are used.

to check whether a route to a given IP address exists without regard to its incoming interface	strict mode
to filter Bogon IP addresses	feasible mode
to ensure the incoming interface is the best reverse path to a given IP address	loose mode
when there are alternate routes to a given IP address	

- A. Mastered
 B. Not Mastered

Answer: A

Explanation:

to check whether a route to a given IP address exists without regard to its incoming interface	to ensure the incoming interface is the best reverse path to a given IP address
to filter Bogon IP addresses	when there are alternate routes to a given IP address
to ensure the incoming interface is the best reverse path to a given IP address	to filter Bogon IP addresses
when there are alternate routes to a given IP address	

NEW QUESTION 180

What is a characteristic of a secure cloud architecture model?

- A. limited access to job function
 B. dedicated and restricted workstations
 C. multi-factor authentication
 D. software-defined network segmentation

Answer: C

NEW QUESTION 181

Which two features are advantages of SD-WAN compared to MPLS-based connectivity? (Choose two.)

- A. uses FEC constructs for traffic forwarding, thereby improving efficiency
 B. separates infrastructure and policy
 C. uses policy-based forwarding of real-time traffic with less complexity
 D. unifies the WAN backbone
 E. manages failures through backup links

Answer: CD

NEW QUESTION 182

The SD-WAN architecture is composed of separate orchestration management, control, and data planes Which activity happens at the orchestration plane?

- A. automatic onboarding of the SD-WAN routers into the SD-WAN overlay
 B. decision-making process on where traffic flows
 C. packet forwarding
 D. central configuration and monitoring

Answer: D

NEW QUESTION 187

A company requires an RPO of less than 10 seconds to ensure business continuity. Which technology should be deployed?

- A. geographically dispersed data centers with asynchronous replication
 B. a single data center with duplicated infrastructure, dual PSUs, and a UPS
 C. geographically dispersed data centers with synchronous replication
 D. a single data center with duplicated infrastructure and dual PSUs

Answer: C

NEW QUESTION 188

The Layer 3 control plane is the intelligence over the network that steers traffic toward its intended destination. Which two techniques can be used in service provider-style networks to offer a more dynamic, flexible, controlled, and secure control plane design? (Choose two.)

- A. access control lists
- B. firewalls
- C. QoS policy propagation with BGP
- D. remote black-holing trigger
- E. prefix lists

Answer: DE

NEW QUESTION 189

A customer migrates from a traditional Layer 2 data center network into a new SDN-based, spine-and-leaf VXLAN EVPN data center within the same location. The networks are joined to enable host migration at Layer 2 Which activity should be completed each time a legacy network is migrated?

- A. The migrated VLAN should be pruned from the Layer 2 interconnects.
- B. The migrated network should have a VXLAN VNID configured within the new network.
- C. The migrated network should be advertised to the EVPN network as a Type 2 network.
- D. The migrated network should be added to the EVPN BGP routing.

Answer: C

NEW QUESTION 192

What are two descriptions of network optimization? (Choose two.)

- A. maintain high availability
- B. proactive network management
- C. network redesign
- D. network health maintenance
- E. identify network requirements

Answer: AD

NEW QUESTION 196

Which two factors must be considered for high availability in campus LAN designs to mitigate concerns about unavailability of network resources? (Choose two.)

- A. device resiliency
- B. device type
- C. network type
- D. network resiliency
- E. network size

Answer: AD

NEW QUESTION 199

The major business applications of an enterprise are largely monolithic and hard-coded As part of a major modernization and overhaul of the applications the goal is to move to a modular and containerized application architecture mode At the same time decoupling from the hardware is desired to move to an on-demand provisioning However the CyberOps team mandated that the final architecture must provide the same security levels as an air-gapped data center. Which cloud architecture meets these requirements?

- A. IaaS
- B. private cloud
- C. PaaS
- D. hybrid cloud
- E. public cloud

Answer: B

NEW QUESTION 204

A business requirement stating that failure of WAN access for dual circuits into an MPLS provider for a Data Centre cannot happen due to related service credits that would need to be paid has led to diversely routed circuits to different points of presence on the providers network? What should a network designer also consider as part of the requirement?

- A. Provision of an additional MPLS provider
- B. Out of band access to the MPLS routers
- C. Ensuring all related remote branches are dual homed to the MPLS network
- D. Dual PSUs & Supervisors on each MPLS router

Answer: A

NEW QUESTION 205

A consultant needs to evaluate project management methodologies for a new service deployment on the existing network of a customer. The customer wants to be

involved in the end-to-end project progress and be provided with frequent updates. The customer also wants the ability to change the requirements if needed, as the project progresses. Which project management methodology should be used?

- A. three principles
- B. phased
- C. Agile
- D. Waterfall

Answer: C

NEW QUESTION 207

Company XYZ must design a strategy to protect their routers from DoS attacks, such as traffic destined to the router's own route processor, using separate control plane categories. Which two capabilities can be used to achieve this requirement? (Choose two.)

- A. Control Plane Protection using queue thresholding on the transit subinterface
- B. Control Plane Protection using port filtering on the transit subinterface
- C. Control Plane Protection using port filtering on the main interface
- D. Control Plane Protection using queue thresholding on the host subinterface
- E. Control Plane Protection using port filtering on the host subinterface

Answer: DE

NEW QUESTION 209

Company XYZ has two routing domains in their network, EIGRP and OSPF. The company wants to provide full reachability between the two domains by implementing redistribution on a router running both protocols. They need to design the redistribution in a way that the OSPF routers will see link costs added to external routes. How must the redistribution strategy be designed for this network?

- A. Redistribute using metric type 2 into OSPF.
- B. Redistribute using metric type 1 into OSPF.
- C. Redistribute using metric type 1 into EIGRP.
- D. Redistribute using metric type 2 into EIGRP.

Answer: B

Explanation:

[https://www.ciscopress.com/articles/article.asp?p=27573&seqNum=4#:~:text=Routes%20are%20redistributed%](https://www.ciscopress.com/articles/article.asp?p=27573&seqNum=4#:~:text=Routes%20are%20redistributed%20)

NEW QUESTION 213

A network engineering team is in the process of designing a lab network for a customer demonstration. The design engineer wants to show that the resiliency of the MPLS traffic Engineering Fast Reroute solution has the same failover/failback times as a traditional SONET/SDH network (around 50MSEC). In order to address both link failure and node failure within the lab typology network, which type of the MPLS TE tunnels must be considered for this demonstration?

- A. TE backup tunnel
- B. Next-hop (NHop) tunnel
- C. FRR Backup tunnel
- D. next-next-hop (NNHop) tunnel

Answer: D

NEW QUESTION 217

Which function is performed at the access layer of the three-layer hierarchical network design model?

- A. fault isolation
- B. QoS classification and marking boundary
- C. reliability
- D. fast transport
- E. redundancy and load balancing

Answer: B

NEW QUESTION 218

Which best practice ensures data security in the private cloud?

- A. Use IPsec for communication between unsecured network connection
- B. Encrypt data at rest and in transition.
- C. Use the same vendor for consistent encryption.
- D. Anonymize data ownership to comply with privacy rules.

Answer: B

NEW QUESTION 221

Which mechanism provides Layer 2 fault isolation between data centers?

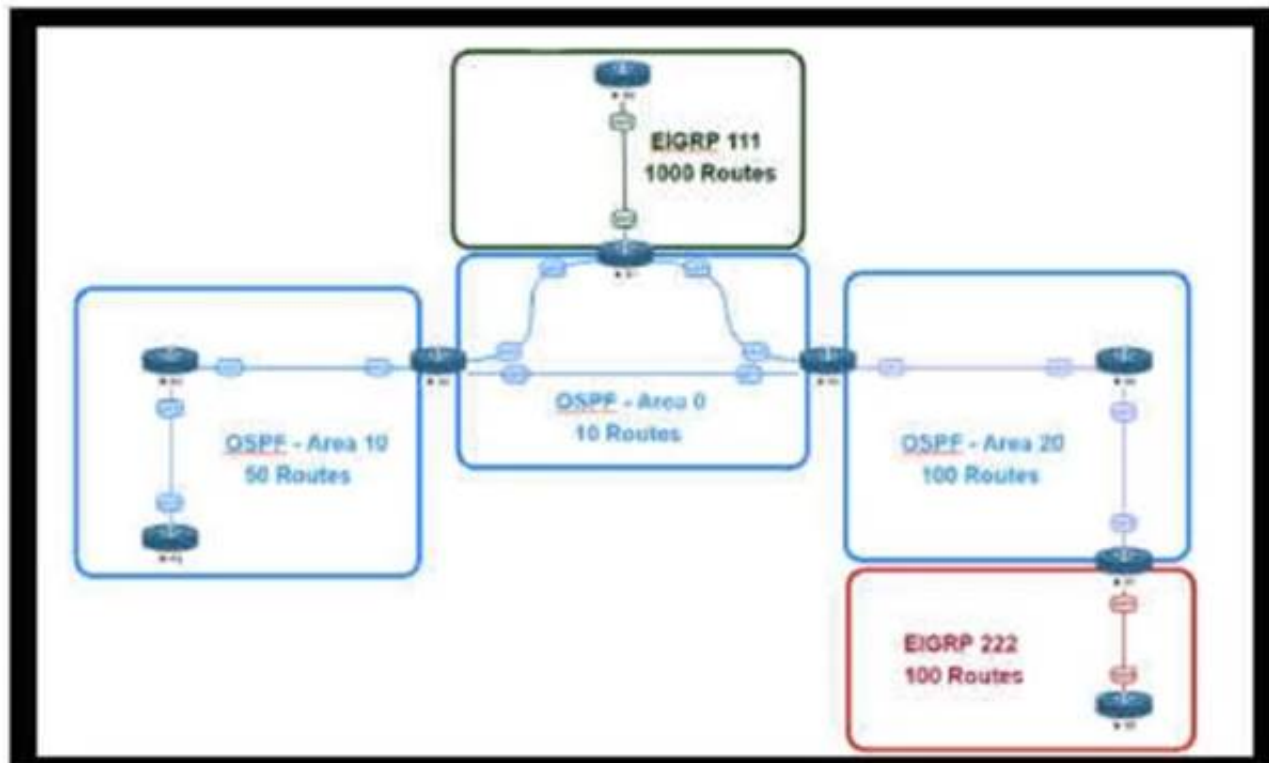
- A. fabric path
- B. OTL
- C. advanced VPLS
- D. LISP

E. TRILL

Answer: D

NEW QUESTION 222

Refer to the exhibit.



An engineer is designing a multiarea OSPF network for a client who also has a large EIGRP domain. EIGRP routes are getting redistributed into OSPF. OSPF area 20 has routers with limited memory and CPU resources. The engineer wants to block routes from EIGRP 111 from propagating into area 20 and allow EIGRP 222 routes to flow. In which OSPF area type fulfills this design requirement?

- A. area 20 as a stub area
- B. type 5 LSA filtering on the ASBR between EIGRP 111 and area 0
- C. area 20 as a NSSA area
- D. type 3 LSA filtering on the ABR between area 0 and area 20

Answer: C

NEW QUESTION 225

Which two advantages of using DWDM over traditional optical networks are true? (Choose two.)

- A. inherent topology flexibility and service protection provided without penalty through intelligent oversubscription of bandwidth reservation
- B. ability to expand bandwidth over existing optical infrastructure
- C. inherent topology flexibility with built-in service protection
- D. inherent topology flexibility with intelligent chromatic dispersion
- E. inherent topology flexibility with a service protection provided through a direct integration with an upper layer protocol

Answer: BC

NEW QUESTION 229

A BGP route reflector in the network is taking longer than expected to converge during large network changes. Troubleshooting shows that the router cannot handle all the TCP acknowledgements during route updates. Which action can be performed to tune the device performance?

- A. Increase the size of the hold queue.
- B. Increase the size of the large buffers.
- C. Decrease the size of the small buffers.
- D. Increase the keepalive timers for each BGP neighbor.

Answer: A

NEW QUESTION 232

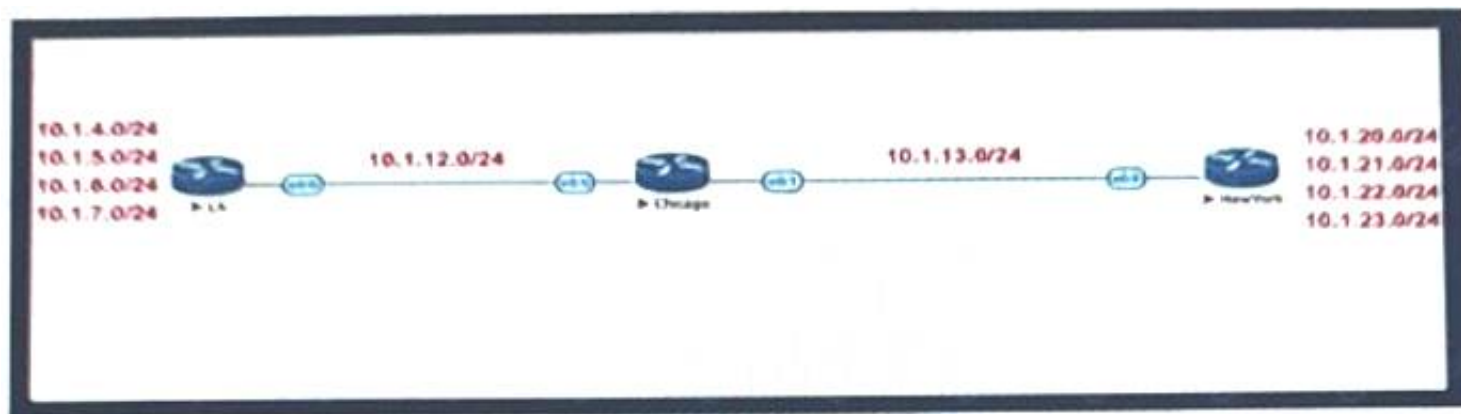
Which tool automates network implementation activities and shortens the implementation lifecycle?

- A. LISP
- B. Java
- C. Conclusion
- D. Python

Answer: D

NEW QUESTION 235

Refer to the exhibit.



Company XYZ BGP topology is as shown in the diagram. The interface on the LA router connected toward the 10.1.5.0/24 network is faulty and is going up and down, which affects the entire routing domain. Which routing technique can the network administrator use so that the rest of the network is not affected by the flapping issue?

- A. The LA administrator should use route aggregation to summarize the 10.1.4.0/24, 10.1.5.0/24, 10.1.6.0/24, and 10.1.7.0/24 networks toward Chicago
- B. The LA administrator should use route dampening for the 10.1.5.0/24 network so that it does not get propagated when it flaps up and down.
- C. The LA administrator should use route filtering to block the 10.1.5.0/24 network from getting propagated toward Chicago and New York.
- D. The Chicago administrator should use route filtering to block the 10.1.5.0/24 network from coming in from the LA router.

Answer: B

NEW QUESTION 238

Company XYZ was not satisfied with the reconvergence time OSPF is taking. BFD was implemented to try to reduce the reconvergence time, but the network is still experiencing delays when having to reconverge. Which technology will improve the design?

- A. OSPF fast hellos
- B. BFD echo
- C. Change the protocol to BGP
- D. Change the OSPF hello and dead intervals

Answer: B

NEW QUESTION 241

A business customer deploys workloads in the public cloud. Now the customer network faces governance issues with the flow of IT traffic and must ensure the security of data and intellectual property. Which action helps to identify the issue for further resolution?

- A. Set up a secure tunnel from customer routers to ensure that traffic is protected as it travels to the cloud service providers.
- B. Send IPFIX telemetry data from customer routers to a centralized collector to identify traffic to cloud service providers
- C. Build a zone-based firewall policy on Internet edge firewalls that collects statistics on traffic sent to cloud service providers
- D. Apply workload policies that dictate the security requirements to the workloads that are placed in the cloud.

Answer: B

NEW QUESTION 244

During evaluation of migrating current on premises infrastructure to add cloud-based infrastructure, a network planning team must meet three core requirements as they make recommendations on which cloud strategy to adopt going forward

- Technology is changing rapidly, therefore the enterprise must be open to adopting new ways of doing things, and be ready to invest CapEx-funds in the next three years
- Network bandwidth capacity requirements are dynamic and are expected to change over the next year
- If new technologies are to be introduced, operational expenses must be kept at a minimum.

Which cloud strategy meets these requirements?

- A. private
- B. hybrid
- C. public
- D. multicloud

Answer: D

NEW QUESTION 247

An architect designs a multi-controller network architecture with these requirements:

- Achieve fast failover to control traffic when controllers fail.
- Reduce connectivity loss and enable smart recovery to improve the SDN survivability.
- Improve connectivity by adding path diversity and capacity awareness for controllers.

Which control plane component of the multi-controller must be built to meet the requirements?

- A. control node reliability
- B. controller state consistency
- C. control path reliability
- D. controller clustering

Answer: B

NEW QUESTION 252

Which three tools are used for ongoing monitoring and maintenance of a voice and video environment? (Choose three.)

- A. flow-based analysis to measure bandwidth mix of applications and their flows
- B. call management analysis to identify network convergence-related failures
- C. call management analysis to identify CAC failures and call quality issues
- D. active monitoring via synthetic probes to measure loss, latency, and jitter
- E. passive monitoring via synthetic probes to measure loss, latency, and jitter
- F. flow-based analysis with PTP time-stamping to measure loss, latency, and jitter

Answer: ACD

NEW QUESTION 255

Company XYZ is designing their network using the three-layer hierarchical model. At which layer must the QoS design classify or mark the traffic?

- A. access
- B. core
- C. collapsed core
- D. distribution

Answer: A

NEW QUESTION 257

Which action must be taken before new VoIP systems are implemented on a network to ensure that the network is ready to handle the traffic?

- A. Evaluate bandwidth utilization and connection quality
- B. Enable special requirements such as direct DID lines on pickup
- C. Make recommendations to limit the size of the half-open session table on routers
- D. Check if anomaly detection is enabled for SIP and H.323 on Layer 3 devices

Answer: B

NEW QUESTION 261

Which extensions to GRE tunneling provide session tracking and in-order packet delivery in exchange for additional state stored in tunnel endpoints?

- A. GRE Protocol Type and Checksum extension fields.
- B. GRE Version and Reserved0 extension fields.
- C. No extension fields are available in the GRE header to track session data and packet sequences.
- D. GRE Key and Sequence number extensions.

Answer: D

NEW QUESTION 266

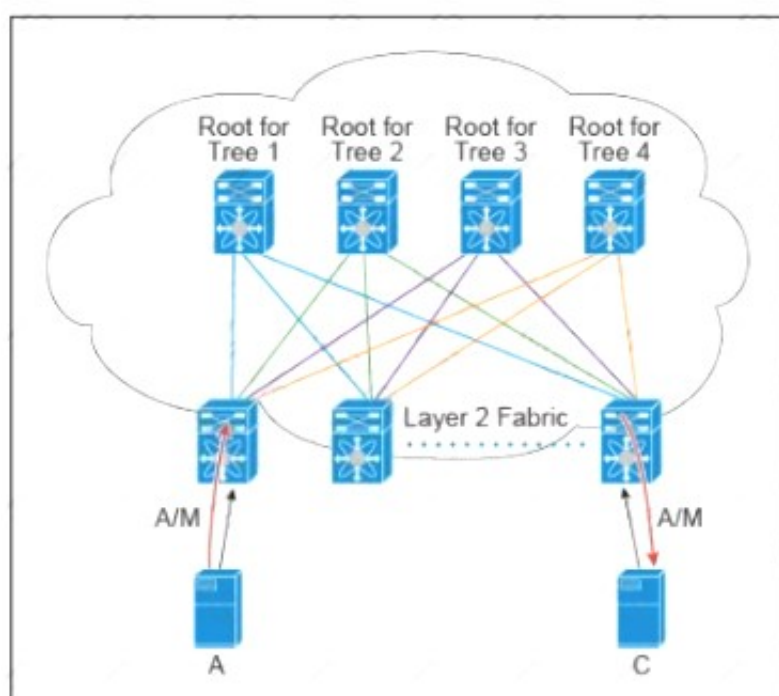
Which optimal use of interface dampening on a fast convergence network design is true?

- A. When occasional flaps of long duration occur
- B. when numerous adjacent flaps of very short duration occur
- C. when the router hardware is slower than the carrier delay down detection
- D. when the switch hardware is faster than the debounce timer down detection

Answer: B

NEW QUESTION 271

Refer to the exhibit.



There are multiple trees in the Cisco FabricPath. All switches in the Layer 2 fabric share the same view of each tree. Which two concepts describe how the multicast traffic is load-balanced across this topology? (Choose two)

- A. A specific (S,G) traffic is not load-balanced

- B. All trees are utilized at the same level of the traffic rate
- C. Every leaf node assigns the specific (S.G) to the same tree.
- D. A specific (S.G) multicast traffic is load-balanced across all trees due to better link utilization efficiency.
- E. The multicast traffic is generally load-balanced across all trees

Answer: BD

NEW QUESTION 275

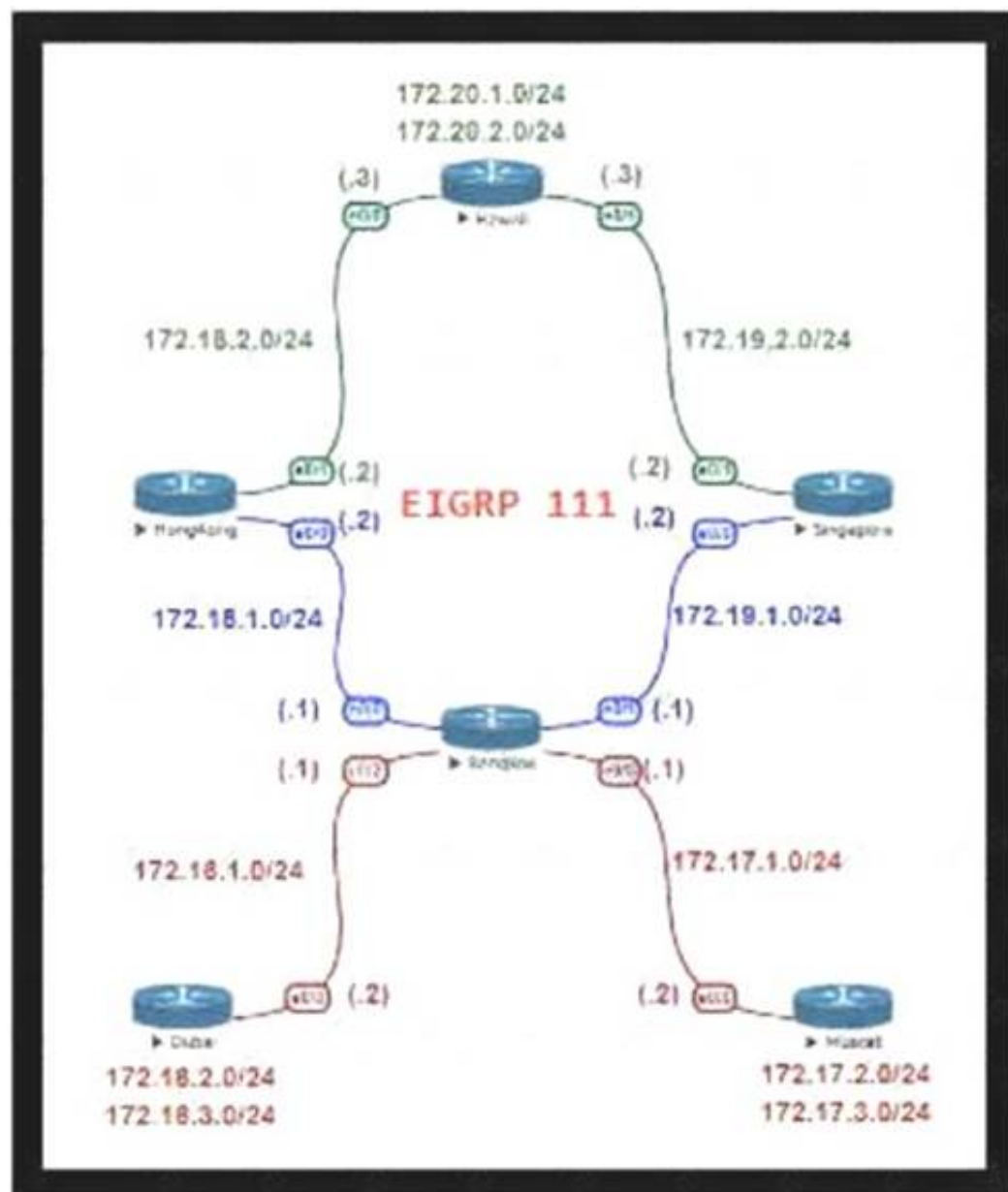
Which technology is an open-source infrastructure automation tool that automates repetitive tasks for users who work in networks such as cloud provisioning and intraservice orchestration?

- A. Ansible
- B. Contrail
- C. Java
- D. Jinja2

Answer: A

NEW QUESTION 276

Refer to the exhibit.



For Company XYZ Bangkok is using ECMP to reach the 172 20 2 0/24 network The company wants a design that would allow them to forward traffic from 172 16 2 0/24 toward 172 20 2 0/24 via the Singapore router as the preferred route The rest of the traffic should continue to use ECMP Which technology fulfills this design requirement?

- A. policy-based routing
- B. route summarization
- C. unequal-cost load balancing using variance
- D. LFA

Answer: A

NEW QUESTION 277

You want to mitigate failures that are caused by STP loops that occur before UDLD detects the failure or that are caused by a device that is no longer sending BPDUs. Which mechanism do you use along with UDLD?

- A. Root guard
- B. BPDU guard
- C. Loop guard
- D. BPDU filtering

Answer: C

NEW QUESTION 278

What are two key design principles when using a hierarchical core-distribution-access network model? (Choose two)

- A. A hierarchical network design model aids fault isolation
- B. The core layer is designed first, followed by the distribution layer and then the access layer
- C. The core layer provides server access in a small campus.
- D. A hierarchical network design facilitates changes
- E. The core layer controls access to resources for security

Answer: AD

NEW QUESTION 279

What advantage of placing the IS-IS layer 2 flooding domain boundary at the core Layer in a three-layer hierarchical network is true?

- A. The Layer 1 and Layer 2 domains can easily overlap
- B. It reduces the complexity of the Layer 1 domains
- C. It can be applied to any kind of topology
- D. The Layer 2 domain is contained and more stable

Answer: D

NEW QUESTION 280

When an SDN-based model is used to transmit multimedia traffic, which aspect should an architect consider while designing the network?

- A. QoE estimation
- B. security
- C. traffic patterns
- D. flow forwarding

Answer: A

NEW QUESTION 285

Your company wants to deploy a new data center infrastructure Based on the requirements you have chosen VXLAN as encapsulation technology The customer is concerned about miss-configuration of Layer 2 devices and DC wide outages caused by Layer 2 loops What do you answer?

- A. VXLAN offers native loop avoidance mechanism
- B. Storm Control should be enabled on all ports
- C. VPC+ could prevent L2 loop on access ports
- D. BPDU Guard should be enabled on all VTEP access ports

Answer: D

NEW QUESTION 290

Company XYZ has a new network based on IPv6. Some of the subnets that they are planning to use will be confidential and need an addressing scheme that confines them to the local campus network. Which type of IPv6 addresses can be used for these networks in the IPv6 addressing design?

- A. local addresses
- B. private addresses
- C. link-local addresses
- D. unique local addresses

Answer: D

NEW QUESTION 291

You are designing an Out of Band Cisco Network Admission Control. Layer 3 Real-IP Gateway deployment for a customer Which VLAN must be trunked back to the Clean Access Server from the access switch?

- A. authentication VLAN
- B. user VLAN
- C. untrusted VLAN
- D. management VLAN

Answer: D

NEW QUESTION 292

Which two statements describe the functionality of OSPF packet-pacing timers? (Choose two) The group-pacing timer controls the interval that is used for group and individual LSA refreshment

- A. OSPF flood-pacing timers allow dynamic control of the OSPF transmission queue size
- B. OSPF retransmission-pacing timers allow control of interpacket spacing between consecutive link-state update packets in the OSPF retransmission queue.
- C. OSPF retransmission-pacing timers allow control of packet interleaving between nonconsecutive link-state update packets in the OSPF retransmission queue.
- D. OSPF flood-pacing timers allow control of interpacket spacing between consecutive link-state update packets in the OSPF transmission queue

Answer: BD

NEW QUESTION 294

Organizations that embrace Zero Trust initiatives ranging from business policies to technology infrastructure can reap business and security benefits. Which two domains should be covered under Zero Trust initiatives? (Choose two)

- A. workload
- B. work domain
- C. workplace
- D. workgroup
- E. workspace

Answer: AC

NEW QUESTION 297

An enterprise requires MPLS connected branches to access cloud-based Microsoft 365 services over an SD-WAN solution. Internet access is available only at dual regional hub sites that are connected to the MPLS network. Which connectivity method provides an optimum access method to the cloud-based services if one ISP suffers loss or latency?

- A. Cloud onRamp gateway site
- B. Cloud onRamp SWG
- C. Cloud onRamp
- D. Cloud onRamp SaaS

Answer: D

Explanation:

<https://www.cisco.com/c/en/us/td/docs/routers/sdwan/configuration/cloudonramp/vedge-20-x/cloud-onramp-boo>

NEW QUESTION 298

You are designing a network running both IPv4 and IPv6 to deploy QoS. Which consideration is correct about the QoS for IPv4 and IPv6?

- A. IPv4 and IPv6 traffic types can use queuing mechanisms such as LLQ, PQ, and CQ.
- B. IPv6 packet classification is only available with process switching, whereas IPv4 packet classification is available with both process switching and CEF.
- C. IPv6 and IPv4 traffic types can use a single QoS policy to match both protocols.
- D. Different congestion management mechanisms need to be used for IPv4 and IPv6 traffic types.

Answer: C

NEW QUESTION 303

Which two actions must merchants do to be compliant with the Payment Card Industry Data Security Standard? (Choose two.)

- A. conduct risk analyses
- B. install firewalls
- C. use antivirus software
- D. establish monitoring policies
- E. establish risk management policies

Answer: BC

NEW QUESTION 308

An enterprise campus is adopting a network virtualization design solution with these requirements:

- It must include the ability to virtualize the data plane and control plane by using VLANs and VRFs
- It must maintain end-to-end logical path transport separation across the network
- resources available grouped at the access edge

Which two primary models can this network virtualization design be categorized? (Choose two.)

- A. Path isolation
- B. Session isolation
- C. Group virtualization
- D. Services virtualization
- E. Edge isolation

Answer: AD

NEW QUESTION 313

Which BGP feature provides fast convergence?

- A. BGP PIC
- B. BGP-EVPN
- C. BGP FlowSpec
- D. BGP-LS

Answer: A

NEW QUESTION 314

What is a description of a control plane action?

- A. de-encapsulating and re-encapsulating a packet in a data-link frame

- B. matching the destination MAC address of an Ethernet frame to the MAC address table
- C. matching the destination IP address of an IP packet to the IP routing table
- D. hosts locating routers that reside on attached links using the IPv6 Neighbor Discover Protocol

Answer: D

NEW QUESTION 316

A Tier-3 Service Provider is evolving into a Tier-2 Service Provider due to the amount of Enterprise business it is receiving. The network engineers are re-evaluating their IP/MPLS design considerations in order to support duplicate/overlapping IP addressing from their Enterprise customers within each Layer3 VPN. Which concept would need to be reviewed to ensure stability in their network?

- A. Assigning unique Route Distinguishers
- B. Assigning unique Route Target ID'S
- C. Assigning unique IP address space for the Enterprise NAT/Firewalls
- D. Assigning unique VRF ID's to each L3VPN

Answer: A

NEW QUESTION 319

An enterprise wants to provide low-cost delivery of network systems that can be scaled on business demand, followed by an initiative to reduce capital expenses for new IT equipment. Which technology meets these goals?

- A. IaaS within a private cloud
- B. IaaS within an on-premises location
- C. PaaS within a public cloud
- D. SaaS within an on-premises location

Answer: C

NEW QUESTION 324

Identity and access management between multiple users and multiple applications has become a mandatory requirement for Company XYZ to fight against ever increasing cybersecurity threats. To achieve this, federated identity services have been deployed in the Company XYZ network to provide single sign-on and Multi-Factor Authentication for the applications and services. Which protocol can be used by Company XYZ to provide authentication and authorization services?

- A. OAuth2
- B. OpenID Connect
- C. OpenID
- D. SAML2.0

Answer: D

NEW QUESTION 327

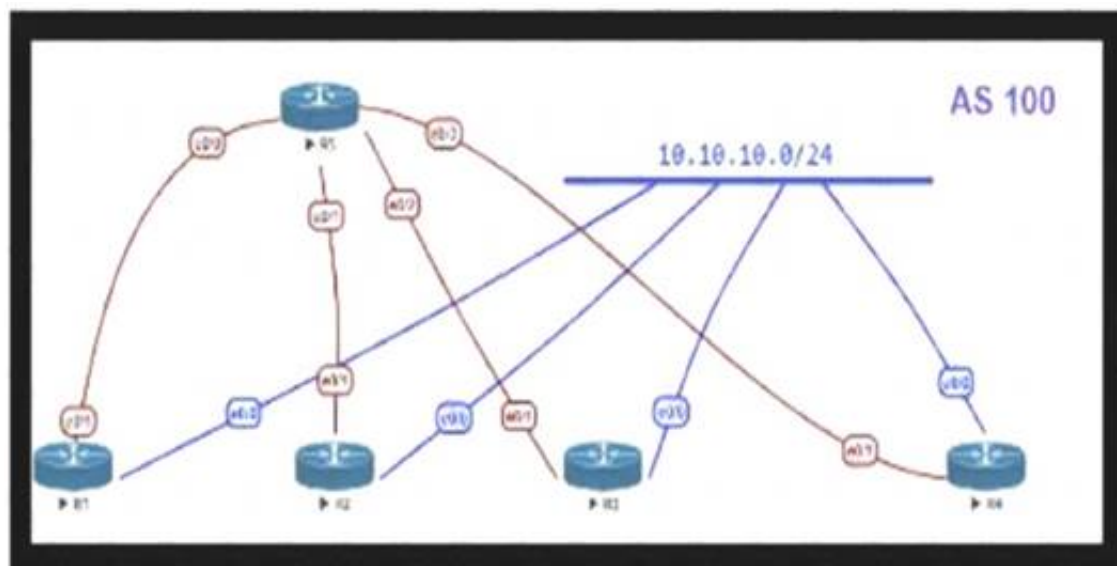
SD-WAN can be used to provide secure connectivity to remote offices, branch offices, campus networks, data centers, and the cloud over any type of IP-based underlay transport network. Which two statements describe SD WAN solutions? (Choose two.)

- A. SD-WAN networks are inherently protected against slow performance.
- B. Control and data forwarding planes are kept separate.
- C. Improved operational efficiencies result in cost savings.
- D. Solutions include centralized orchestration, control, and zero-touch provisioning.
- E. Solutions allow for variations of commodity and specialized switching hardware.

Answer: BD

NEW QUESTION 331

Refer to the exhibit.



OSPF is running as the IGP to provide reachability to all AS100 networks. R3 and R4 are the current ABRs at the boundary of OSPF Area0 and Area1. Now BGP must be deployed within AS 100 because it will be receiving Internet routes from its eBGP peers (the service provider) connected to R1 and R2. What is an optimal solution for this deployment to configure BGP relationships and redistribute BGP learned routes into OSPF?

- A. R5 should be configured as a route reflector for R1, R2, R3 and R4. BGP routes must be redistributed at R1 and R2 into OSPF.
- B. Configuration should be set up with R1 and R2, and R3 in one sub AS, with R4 in another, and redistribution at R1 and R2.

- C. A full mesh should be deployed between all the routers with mutual redistribution to take place at R1 and R2.
- D. R1, R2, R3 and R4 must be set up with a neighbor relationship with R5 only must not be a route reflector.

Answer: C

NEW QUESTION 336

An enterprise plans to evolve from a traditional WAN network to a software-defined WAN network. The existing devices have limited capability when it comes to virtualization. As the migration is carried out, enterprise applications and services must not experience any traffic impact. Which implementation plan can be used to accommodate this during the migration phase?

- A. Deploy controllers, deploy SD-WAN edge router
- B. In the data center, and migrate branch sites.
- C. Migrate data center WAN routers, migrate branch sites, and deploy SD-WAN edge routers.
- D. Migrate branch sites, migrate data center WAN routers, and deploy controllers.
- E. Deploy SD-WAN edge routers in the data center, deploy controllers, and migrate branch sites

Answer: A

NEW QUESTION 341

An MPLS service provider is offering a standard EoMPLS-based VPLS service to Customer A. providing Layer 2 connectivity between a central site and approximately 100 remote sites. Customer A wants to use the VPLS network to carry its internal multicast video feeds which are sourced at the central site and consist of 20 groups at Mbps each. Which service provider recommendation offers the most scalability?

- A. EoMPLS-based VPLS can carry multicast traffic in a scalable manner
- B. Use a mesh of GRE tunnels to carry the streams between sites
- C. Enable snooping mechanisms on the provider PE routers.
- D. Replace VPLS with a Layer 3 MVPN solution to carry the streams between sites

Answer: D

NEW QUESTION 346

You are tasked to design a QoS policy for a service provider so they can include it in the design of their MPLS core network. If the design must support an MPLS network with six classes, and CEs will be managed by the service provider, which QoS policy should be recommended?

- A. map IP CoS bits into the IP Precedence field
- B. map flow-label bits into the Exp field
- C. map IP precedence bits into the DSCP field
- D. map DSCP bits into the Exp field

Answer: D

NEW QUESTION 350

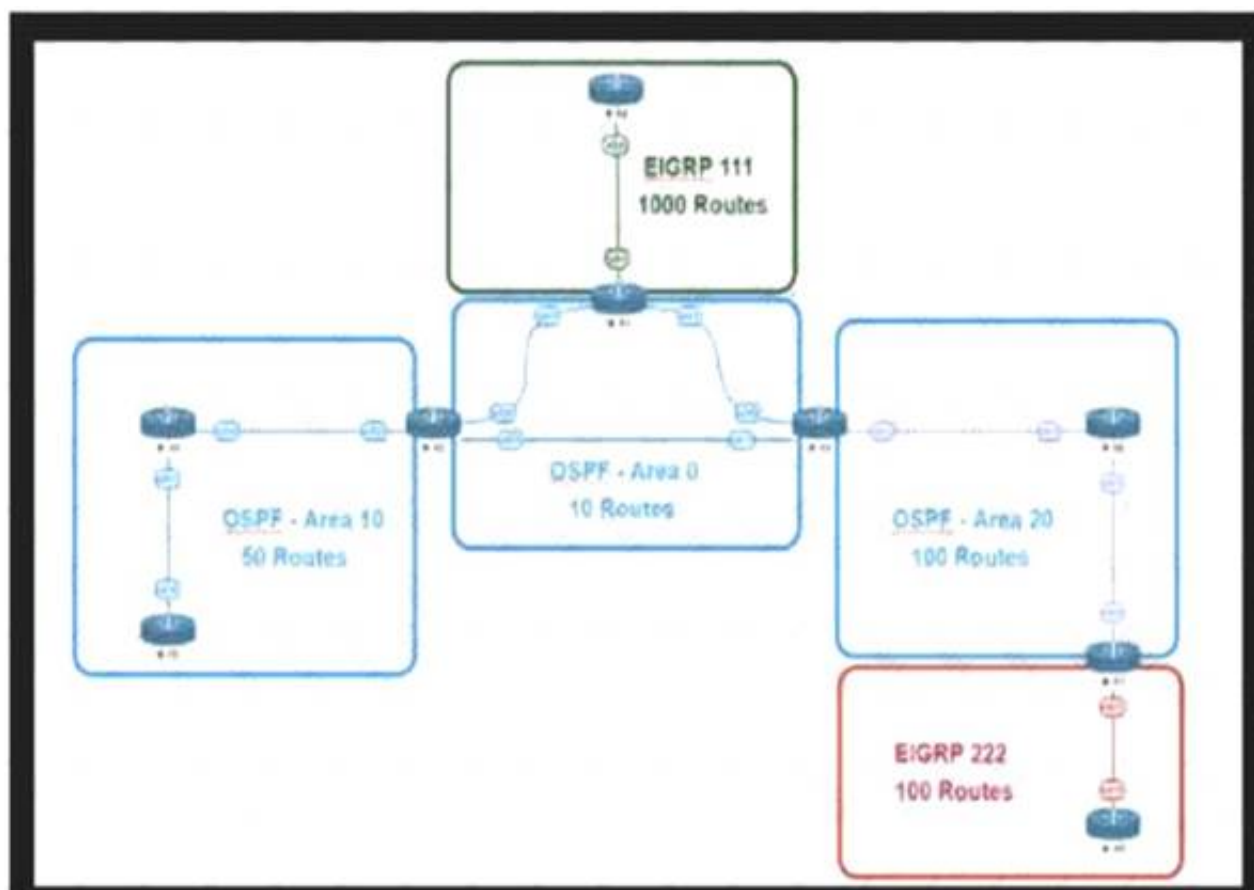
The controller has a global view of the network, and it can easily ensure that the network is in a consistent and optimal configuration. Which two statements describe a centralized SDN control path? (Choose two.)

- A. Scaling of the centralized controller cluster is challenging for services like DHCP and load-balancing.
- B. It is highly-available by design with no single-point-of-failure risks present.
- C. Integrating smart NIC capabilities on the local host level is made easier through rest APIs.
- D. It significantly improves the latency when performing reactive handling of PACKET_IN events.
- E. It centralized controller can support all southbound APIs, which allows for easy integration with legacy equipment.

Answer: AE

NEW QUESTION 354

Refer to the exhibit.



This network is running OSPF and EIGRP as the routing protocols Mutual redistribution of the routing protocols has been configured on the appropriate ASBRs The OSPF network must be designed so that flapping routes in EIGRP domains do not affect the SPF runs within OSPF The design solution must not affect the way EIGRP routes are propagated into the EIGRP domains Which technique accomplishes the requirement?

- A. route summarization on the ASBR interfaces facing the OSPF domain
- B. route summarization on the appropriate ASBRs.
- C. route summarization on the appropriate ASBRs.
- D. route summarization on EIGRP routers connecting toward the ASBR

Answer: B

NEW QUESTION 358

How must the queue sizes be designed to ensure that an application functions correctly?

- A. Each individual device queuing delay in the chain must be less than or equal to the application required delay.
- B. The queuing delay on every device in the chain must be exactly the same to the application required delay.
- C. The default queue sizes are good for any deployment as it compensates the serialization delay.
- D. The sum of the queuing delay of all devices plus serialization delay in the chain must be less than or equal to the application required delay.

Answer: D

NEW QUESTION 360

Which two impacts of adding the IP event dampening feature to a network design are true? (Choose two.)

- A. It protects against routing loops.
- B. It switches traffic immediately after a link failure.
- C. It speeds up link failure detection.
- D. It reduces the utilization of system processing resources.
- E. It improves overall network stability.

Answer: DE

NEW QUESTION 361

The Company XYZ network requires OSPF dead neighbor detection in a subsecond manner However the company network does not support BFD Which other feature can be used to fulfill the design requirement?

- A. STP
- B. fast hello
- C. LFA
- D. DPD

Answer: B

NEW QUESTION 362

Various teams in different organizations within an enterprise are preparing low-level design documents to capture network parameters using a Waterfall project model:

- hardware sizing and power consumption
- Layer 2 and layer 3 services parameters
- configuration of all control plane protocols

Input from relevant stakeholders was captured at the start of the project, and the project scope has been defined based on the parameters above. What impact will it have on documentation and project deliverables if the stakeholders ask to have changes carried out in the network before the information has been captured?

- A. This provides more opportunity to think outside the box.

- B. Rework is expected before the delivery.
- C. Significant effort and time are required.
- D. This provides a flexible approach to incorporate changes.

Answer: B

NEW QUESTION 366

Company XYZ has 30 sites running a legacy private WAN architecture that connects to the Internet via multiple high-speed connections. The company is now redesigning their network and must comply with these design requirements:

- Use a private WAN strategy that allows the sites to connect to each other directly and caters for future expansion.
- Use the Internet as the underlay for the private WAN.
- Securely transfer the corporate data over the private WAN.

Which two technologies should be incorporated into the design of this network? (Choose two.)

- A. S-VTI
- B. IPsec
- C. DMVPN
- D. GET VPN
- E. PPTP

Answer: BC

NEW QUESTION 370

A small organization of 20 employees is looking to deliver a network design service for modernizing customer networks to support advanced solutions.

- Project scope and weekly progress should be visualized by the management.
- Always consider feedback and make changes accordingly during the project.
- Should consider flexibility to change scope at the point of time.

Which project methodology meets the requirements and have the least impact on the outcome?

- A. Scrum
- B. LEAN
- C. Kanban
- D. Six-Sigma

Answer: A

Explanation:

<https://firebrand.training/uk/blog/scrum-vs-six-sigma-which-one-is-right-for-you>

NEW QUESTION 372

SDN is still maturing. Throughout the evolution of SDN, which two things will play a key role in enabling a successful deployment and avoiding performance visibility gaps in the infrastructure? (Choose two.)

- A. rapid on-demand growth
- B. dynamic real-time change
- C. falling back to old behaviors
- D. peer-to-peer controller infrastructure
- E. integration of device context

Answer: BE

NEW QUESTION 376

Which two types of planning approaches are used to develop business-driven network designs and to facilitate the design decisions? (Choose two.)

- A. cost optimization approach
- B. strategic planning approach
- C. modular approach
- D. tactical planning approach
- E. business optimization approach

Answer: BD

NEW QUESTION 377

A network security team uses a purpose-built tool to actively monitor the campus network, applications, and user activity. The team also analyzes enterprise telemetry data from IPFIX data records that are received from devices in the campus network. Which action can be taken based on the augmented data?

- A. reduction in time to detect and respond to threats
- B. integration with an incident response plan
- C. adoption and improvement of threat-detection response
- D. asset identification and grouping decisions

Answer: A

NEW QUESTION 378

The Company XYZ network is experiencing attacks against their router. Which type of Control Plane Protection must be used on the router to protect all control

plane IP traffic that is destined directly for one of the router interfaces?

- A. Control Plane Protection host subinterface
- B. Control Plane Protection main interface
- C. Control Plane Protection transit subinterface
- D. Control Plane Protection CEF-exception subinterface

Answer: A

NEW QUESTION 380

Drag and drop the optical technology design characteristics on the left to the correct optical technologies on the right. Not all options are used

suited for short-haul and long-haul distances

number of channels can be 40 or more

large channel spacing (2500 GHz)

small channel spacing (100 or 50 GHz)

suited for short-haul, typically limited to Metropolitan networks

maximum of 16 channels

only suitable for ring or dual-ring topology

CWDM (Coarse Wavelength Division Multiplexing)

target 1

target 2

target 3

DWDM (Dense Wavelength Division Multiplexing)

target 4

target 5

target 6

- A. Mastered
- B. Not Mastered

Answer: A

Explanation:

- 1 - target 4
- 2 - target 5
- 3 - target 1
- 4 - target 6
- 5 - target 2
- 6 - target 3

NEW QUESTION 382

The General Bank of Greece plans to upgrade its legacy end-of-life WAN network with a new flexible, manageable, and scalable solution. The mam requirements are ZTP support, end-to-end encryption application awareness and segmentation. The CTO states that the main goal of the bank is CAPEX reduction. Which WAN technology should be used for the solution?

- A. SD-branch
- B. DMVPN with PfR
- C. managed SD-WAN
- D. SD-WAN

Answer: C

NEW QUESTION 385

.....

THANKS FOR TRYING THE DEMO OF OUR PRODUCT

Visit Our Site to Purchase the Full Set of Actual 400-007 Exam Questions With Answers.

We Also Provide Practice Exam Software That Simulates Real Exam Environment And Has Many Self-Assessment Features. Order the 400-007 Product From:

<https://www.2passeasy.com/dumps/400-007/>

Money Back Guarantee

400-007 Practice Exam Features:

- * 400-007 Questions and Answers Updated Frequently
- * 400-007 Practice Questions Verified by Expert Senior Certified Staff
- * 400-007 Most Realistic Questions that Guarantee you a Pass on Your FirstTry
- * 400-007 Practice Test Questions in Multiple Choice Formats and Updatesfor 1 Year