



UiPath

Exam Questions UiPath-ADAv1

UiPath Automation Developer Associate v1 Exam

About Exambible

Your Partner of IT Exam

Found in 1998

Exambible is a company specialized on providing high quality IT exam practice study materials, especially Cisco CCNA, CCDA, CCNP, CCIE, Checkpoint CCSE, CompTIA A+, Network+ certification practice exams and so on. We guarantee that the candidates will not only pass any IT exam at the first attempt but also get profound understanding about the certificates they have got. There are so many alike companies in this industry, however, Exambible has its unique advantages that other companies could not achieve.

Our Advances

* 99.9% Uptime

All examinations will be up to date.

* 24/7 Quality Support

We will provide service round the clock.

* 100% Pass Rate

Our guarantee that you will pass the exam.

* Unique Gurantee

If you do not pass the exam at the first time, we will not only arrange FULL REFUND for you, but also provide you another exam of your claim, ABSOLUTELY FREE!

NEW QUESTION 1

A developer is working with a Purchase Order automation process. The number of shipment containers and boxes per container are obtained in two strings, "ShipmentContainers" and "BoxesPerContainer". The task is for the robot to obtain the total number of boxes in all shipment containers in an Int32 variable TotalBoxes.

Which expression should be used for calculating the total number of boxes?

- A. Convert.ToInt32(ShipmentContainers) * Convert.ToInt32(BoxesPerContainer)
- B. ShipmentContainers.ToInt() * BoxesPerContainer.ToInt()
- C. ShipmentContainers.ToInt32() * BoxesPerContainer.ToInt32()
- D. ShipmentContainers * BoxesPerContainer

Answer: A

Explanation:

To calculate the total number of boxes in all shipment containers, the expression that should be used is:

Convert.ToInt32(ShipmentContainers) * Convert.ToInt32(BoxesPerContainer)

This expression converts the two strings, "ShipmentContainers" and "BoxesPerContainer", into integer values using the Convert.ToInt32 method. This method converts the specified string representation of a 32-bit signed integer to an equivalent integer value¹. Then, the expression multiplies the two integer values to obtain the total number of boxes. For example, if "ShipmentContainers" is "5" and "BoxesPerContainer" is "10", then the expression will return 50 as the total number of boxes.

References: Convert.ToInt32 Method from UiPath documentation.

NEW QUESTION 2

Which Control Flow activity is suitable for a developer who needs to assess the value of a counter before executing the loop's body in a workflow?

- A. Do While
- B. Switch
- C. JWhile
- D. If

Answer: C

Explanation:

The While activity is a Control Flow activity that enables the developer to execute a specified part of the automation while a condition is met. The condition is evaluated before the loop body is executed, which means that the developer can assess the value of a counter or any other variable before performing the actions inside the loop. This type of activity can be useful to iterate through an array, a list, a data table, or any other collection of data, or to repeat an action until a certain value is reached or changed. The While activity can be found in the Activities panel, under Workflow > Control.

References:

? While - UiPath Activities

? While Activity - UiPath Studio

? UiPath While Loop Tutorial with Examples - RPA Tutorial

NEW QUESTION 3

What is a pre-requisite for running InitAllApplications TestCase?

- A. Invoke CloseAllApplications XAML file in Given.
- B. Invoke KillAllProcesses XAML file in Given.
- C. Invoke InitAllSettings XAML file in Given.
- D. Invoke SetTransactionStatus XAML file in Given.

Answer: C

Explanation:

The InitAllApplications TestCase is used to test the initialization of all the applications that are required for the automation process¹. The pre-requisite for running this TestCase is to invoke the InitAllSettings XAML file in the Given section of the TestCase². The InitAllSettings file is responsible for reading the configuration data from the Config.xlsx file and storing it in a dictionary variable³. This data is then used by the InitAllApplications file to open and log in to the applications using the credentials and URLs from the dictionary variable⁴.

NEW QUESTION 4

In order for a developer to utilize the default REFramework without relying on Orchestrator queues, what is the essential prerequisite to ensure that the project does not interact with Orchestrator?

- A. Omit the OrchestratorQueueName setting from the Config.xlsx file
- B. Exclude the three SetTransactionStatus activities from the SetTransactionStatus workflow & change the variable type.
- C. Eliminate the Get Transaction Data state from the Main state machine
- D. Exclude the Get Transaction Item activity from the project & change the variable type.
- E. Exclude the Get Transaction Item activity from the project
- F. Eliminate the three SetTransactionStatus activities from the SetTransactionStatus workflow & change the variable type.
- G. Remove the Get Transaction Data state from the Main state machine
- H. Remove the OrchestratorQueueName setting from Config.xlsx & change the variable type.

Answer: C

Explanation:

The default REFramework uses Orchestrator queues to store and retrieve transaction items, which are the units of work to be processed by the automation. To use the REFramework without Orchestrator queues, one needs to remove or modify the activities and variables that depend on them. The Get Transaction Item activity is used to fetch a transaction item from a queue, and the SetTransactionStatus activities are used to update the status of a transaction item in a queue. Therefore, these activities need to be excluded from the project. Additionally, the variable type of io_TransactionItem needs to be changed from QueueItem to a

suitable data type that represents the transaction data, such as DataRow, String, etc. (UiPath Automation Developer study guide)

References:

? REFramework without Orchestrator

? REFramework documentation

NEW QUESTION 5

A developer has declared a variable of type String named StrVar and assigned it the value "UIPATH STUDIO". What is the output of the expression, StrVar.IndexOf("U")?

- A. 1
- B. 9
- C. 10

Answer: A

Explanation:

The IndexOf method of String values returns the index of the first occurrence of a specified character or substring in a given string. The index is zero-based, meaning that the first character has the index 0, the second character has the index 1, and so on. If the character or substring is not found, the method returns -1. In this case, the expression StrVar.IndexOf("U") returns the index of the first occurrence of the character "U" in the string "UIPATH STUDIO", which is 0. Therefore, the answer is A. 0. References: String.IndexOf Method, String Variables

NEW QUESTION 6

A developer used a dictionary to store employee ID numbers as the key with associated employee surnames as the value. What is the benefit of using a dictionary?

- A. Dictionaries can have repeated keys
- B. Dictionaries must have unique values
- C. Dictionaries can be searched by keys or values
- D. Dictionary keys and values can be of different data types

Answer: D

Explanation:

The benefit of using a dictionary is that dictionary keys and values can be of different data types. A dictionary is a collection of key-value pairs, where each key is associated with a value. The key and the value can be of any data type, such as String, Integer, Boolean, Object, etc. This allows for more flexibility and versatility in storing and retrieving data³. For example, a dictionary can store employee ID numbers as the key with associated employee surnames as the value, where the key is of type Integer and the value is of type String. To access the value of a specific key, the syntax dictionaryName(key) can be used⁴. References: Dictionaries and How to use dictionary? from UiPath documentation and forum.

NEW QUESTION 7

What happens when the area selection feature in the UiPath Computer Vision wizard is used?

- A. The selected area is automatically resized to fit all UI elements within it.
- B. A portion of the application UI can be selected, which is helpful when dealing with multiple fields bearing the same label.
- C. The selected area is treated as a single UI element, with no further analysis of its contents.
- D. A duplicated UI can be selected, and the copy is modified in the automation process.

Answer: B

Explanation:

The area selection feature in the UiPath Computer Vision wizard is used to refine the scope of the UI elements that are detected by the Computer Vision activities¹. By using this feature, you can select a specific region of the application UI that you want to automate, and the wizard will only show the UI elements within that region. This is helpful when dealing with multiple fields bearing the same label, such as "Name" or "Address", as you can select only the field that you want to interact with². The selected area is not automatically resized, treated as a single UI element, or duplicated by the wizard. References:

? Can we change the selector on computer vision? forum post from UiPath

Community

? Computer Vision activities documentation from UiPath

? Computer Vision Recording forum post from UiPath Community

? AI Computer Vision for RPA product page from UiPath

? The New UiPath AI Computer Vision Is Now in Public Preview blog post from UiPath

NEW QUESTION 8

Based on best practices, how can the integer value, MyInteger be displayed inside a Log Message activity?

- A. "The value is MyIntegerToString"
- B. "The value is" = MyInteger
- C. "The value is " + MyInteger
- D. "The value is" + MyIntegerToString

Answer: D

Explanation:

To display the integer value, MyInteger, inside a Log Message activity, the expression that should be used is:

"The value is" + MyInteger.ToString

This expression uses the string concatenation operator (+) to combine the string literal "The value is" with the string representation of the MyInteger variable. The MyInteger variable is an integer type, which cannot be directly concatenated with a string type. Therefore, the ToString method is used to convert the MyInteger variable to a string type³. For example, if the MyInteger variable has the value 42, then the expression "The value is" + MyInteger.ToString will return the string "The value is 42". The Log Message activity writes the specified message to the Output panel, the log files, and the Orchestrator logs. The Log Message activity has a property called Message, which is the text to be logged⁴. The expression can be entered in the Message property of the Log Message activity to display the

integer value.

References: String Concatenation, Int32.ToString Method, and Log Message from UiPath documentation.

NEW QUESTION 9

Where in the REFramework template project is the "SetTransactionStatus.xaml" invoked?

- A. In the Finally section of the Try Catch activity in the Process Transaction state.
- B. In the Try section of the Try Catch activity in the End Process state.
- C. In the Try and Catches sections of the Try Catch activity in the Process Transaction state.
- D. In the Catches section of the Try Catch activity in the Process Transaction state.

Answer: A

Explanation:

The SetTransactionStatus.xaml file is invoked in the Finally section of the Try Catch activity in the Process Transaction state of the REFramework template project. This file is responsible for setting the status of the current transaction item based on the outcome of the process. It also closes all applications that are used by the process and logs relevant information. (UiPath Studio - REFramework - UiPath Academy)

References:

? Studio - REFramework - UiPath Documentation Portal

? UiPath Studio - REFramework - UiPath Academy

? REFramework documentation.pdf - Google Drive

NEW QUESTION 10

What happens to existing project dependencies in UiPath Studio when converting a Windows-Legacy project to Windows?

- A. Project dependencies are updated to the highest available version.
- B. Project dependencies are completely removed.
- C. Project dependencies remain unchanged.
- D. Project dependencies are marked as unresolved.

Answer: A

Explanation:

When converting a Windows-Legacy project to Windows, the project dependencies are automatically updated to the highest available version that is compatible with the Windows target framework. This is done to ensure that the project can use the latest features and improvements of the activities packages, as well as to avoid potential issues or conflicts with the legacy versions. The updated dependencies are reflected in the project.json file and the Manage Packages window of the project. The developer can also manually update the dependencies to a specific version if needed.

References:

? Deprecation of the Windows-Legacy Compatibility - UiPath Studio

? Convert Windows Project to Windows-Legacy - UiPath Community Forum

NEW QUESTION 10

Starting with UiPath Studio version 2022.10, what happens to dependencies that lack Windows compatibility when they are converted in a project?

- A. They are replaced with compatible alternatives.
- B. They are removed from the project.
- C. They are marked as unresolved.
- D. They are automatically resolved.

Answer: C

Explanation:

Starting with UiPath Studio version 2022.10, the default project type is Windows, which uses .NET 6 or .NET 5 with Windows support¹. If a project contains dependencies that lack Windows compatibility, such as custom activities or libraries, they are marked as unresolved when the project is converted to Windows². The developer needs to manually resolve them by finding compatible alternatives or updating the code³. References:

? Studio - Hardware and Software Requirements documentation, Project

Compatibility section

? Getting error: No compatible version with windows projects forum post, Question by @RajeshT

? Uipath New Version Features - 2022.10.3 blog post, New Default Project Compatibility = Windows section

NEW QUESTION 11

A developer is automating the process of entering sensitive information into text input fields that are constantly changing their position. Each text input field has a corresponding text label. The developer decides to automate the process by using Modern UI Activities with anchors. Which activities should be used?

- A. Find Text Position activity as the anchor and Type Secure Text activity as the action.
- B. Type Into activity with a valid anchor and the input text provided in the Secure Text property.
- C. Find Text Position activity as the anchor and Set Text activity as the action.
- D. Type Into activity with a valid anchor and the input text provided in the Text property.

Answer: A

Explanation:

The Find Text Position activity is used to find the position of a text on the screen and return it as a UiElement variable. This can be used as an anchor to locate the text input field that corresponds to the text label. The Type Secure Text activity is used to type a password or other sensitive information into a UI element, without revealing the actual text. The input

text is provided as a SecureString variable, which is encrypted and cannot be viewed in plain text. This ensures that the sensitive information is entered securely and accurately into the text input field.

References:

? Find Text Position - UiPath Activities

? Type Secure Text - UiPath Activities

? UiPath Anchor Base Tutorial & AnchorPosition Example

NEW QUESTION 16

Where is the TransactionNumber incremented in the REFramework?

- A. Only in the SetTransactionStatus.xaml workflow.
- B. In the End Process state in the Finally section of the Try Catch activity.
- C. In the RetryCurrentTransaction.xaml workflow and in the SetTransactionStatus.xaml workflow.
- D. In the New Transaction transition.

Answer: C

Explanation:

The TransactionNumber is a variable that stores the index of the current transaction item in the REFramework. The TransactionNumber is incremented in two places in the REFramework:

? In the RetryCurrentTransaction.xaml workflow, which is invoked when a system exception occurs and the retry mechanism is enabled. The workflow increments the TransactionNumber by 1 and sets the TransactionStatus to “Retry”. This allows the framework to retry the same transaction item with a new index. (UiPath ReFramework documentation2)

? In the SetTransactionStatus.xaml workflow, which is invoked at the end of each transaction to update the status of the transaction item and log the result. The workflow increments the TransactionNumber by 1 and sets the TransactionStatus to “Successful”, “Failed”, or “BusinessRuleException” depending on the outcome of the transaction. This allows the framework to move on to the next transaction item with a new index. (UiPath ReFramework documentation3)

References:

? 1: Robotic Enterprise Framework Template - UiPath Studio.

? 2: RetryCurrentTransaction.xaml - UiPath ReFramework.

? 3: SetTransactionStatus.xaml - UiPath ReFramework.

NEW QUESTION 19

Which of the following workflow names is correct, based on best practices?

- A. Transactionstatus
- B. Workflow1
- C. creation_of_file
- D. ScrapeFilteredStocks

Answer: D

Explanation:

The correct workflow name, based on best practices, is ScrapeFilteredStocks. This is because it follows the Pascal Case convention, which means that the first letter of each word is capitalized and there are no spaces or underscores between the words. This convention makes the workflow name easy to read and understand, as well as consistent with the UiPath standards. The other workflow names are incorrect because they either use lower case, snake case, or have no meaningful description. For example, Transactionstatus should be TransactionStatus, Workflow1 should be more descriptive, and creation_of_file should be CreationOfFile.

References:

? Naming Rules and Best Practices - Studio - UiPath Community Forum

? Workflow Design - UiPath Studio

NEW QUESTION 24

Which of the following is an outcome of converting a personal workspace into a folder in UiPath Orchestrator?

- A. The owner of the initial workspace is added by default to the newly created folder and assigned the Folder Administrator role.
- B. The owner of the initial workspace and the admin user are added by default to the newly created folder and assigned the Personal Workspace Administrator role.
- C. The admin user is added by default to the newly created folder with the User Administrator role.
- D. The owner of the initial workspace loses access to the newly created folder and the existing admin users are added by default.

Answer: A

Explanation:

A personal workspace in UiPath Orchestrator is a type of modern folder that allows a user to work on their own automation projects without affecting other users or folders1. A personal workspace can be converted into a regular folder by using the Convert to Folder option in the folder settings2. When this happens, the owner of the initial workspace is added by default to the newly created folder and assigned the Folder Administrator role2. This role gives the user full control over the folder and its entities, such as processes, queues, assets, etc3. The other options are incorrect because they do not reflect the actual outcome of converting a personal workspace into a folder.

References: Personal Workspaces documentation, Use of UiPath Orchestrator Folder Packages and Workspaces, Folder Roles documentation.

NEW QUESTION 25

A developer wants to create a process which runs in the background and uses Excel activities Which property of the Excel Application Scope activity must be configured for the process to run in the background?

- A. Private
- B. Visible
- C. Save changes
- D. Read-only

Answer: B

Explanation:

The Visible property of the Excel Application Scope activity determines whether the Excel file is opened in the foreground or in the background. If the Visible property is set to True (default value), the Excel file is opened and displayed on the screen. If the Visible property is set to False, the Excel file is opened and processed in the background, without showing the user interface. This can improve the performance and speed of the automation, as well as avoid any interference with the user's work. Therefore, to create a process that runs in the background and uses Excel activities, the Visible property of the Excel Application Scope activity must be configured to False. References: Excel Application Scope from UiPath documentation.

NEW QUESTION 29

A developer is using a Global Exception Handler as an error handling mechanism for a project. By default, how many times does a Global Exception Handler retry an activity that continually throws an error?

- A. 2
- B. 3
- C. 4
- D. 5

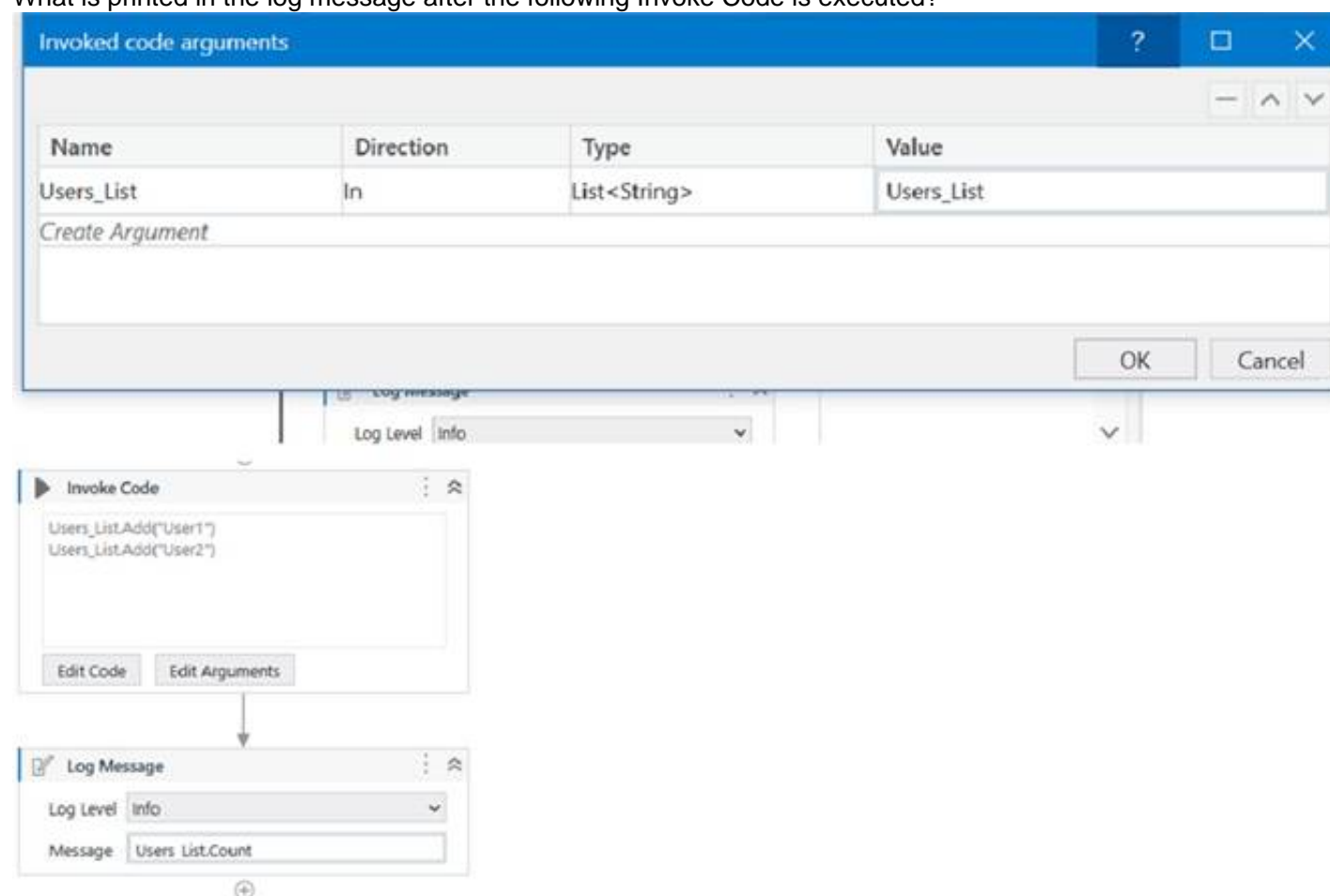
Answer: B

Explanation:

The Global Exception Handler is an error handling mechanism for a project. By default, it retries an activity that continually throws an error 3 times. The Global Exception Handler is a workflow that is executed when an exception occurs in the project. It allows the developer to define custom actions for handling different types of exceptions, such as logging, retrying, aborting, or continuing the execution¹. When the Global Exception Handler encounters an exception, it logs the name of the activity which faulted and starts retrying the activity three times. If it encounters the same exception each time and the number of retries reaches 3, the execution is aborted at the level of the activity which threw the exception². The number of retries can be modified by changing the value of the RetryCount variable in the Global Exception Handler workflow³. References: Global Exception Handler and Global Handler for Exceptions from UiPath documentation and Marketplace.

NEW QUESTION 32

A developer has created a variable of type List of Strings named "UsersList", and initialized it with an empty list: "UsersList = new List(Of String)". What is printed in the log message after the following Invoke Code is executed?



Name	Direction	Type	Value
Users_List	In	List<String>	Users_List

Create Argument

OK Cancel

Invoke Code

```
Users_List.Add("User1")
Users_List.Add("User2")
```

Edit Code Edit Arguments

Log Message

Log Level: Info

Message: Users_List.Count

- A. 2
- B. Object reference not set to an instance exception is thrown
- C. System Argument Exception is thrown

Answer: A

Explanation:

The code is adding two items to the list, but since the list is initialized as an empty list, the count will be 0.

References:

? Data Manipulation with Lists and Dictionaries in Studio course, Lesson 2: Lists, Topic: Creating Lists

? How to initiate List<String[]>? forum post, Answer by @VishalS

NEW QUESTION 35

A developer has defined the StrVar variable of type String Which expression should the developer use to return four characters starting with the second character?

- A. StrVar.Substring(1, 4)
- B. StrVar.Substnng(1, 5)
- C. StrVar.Substring (2, 4)
- D. StrVar.Substring (2, 5)

Answer: A

Explanation:

The Substring method is used to extract a part of a string based on a specified starting index and length. The syntax of the Substring method is: `string.Substring(startIndex, length)` where `startIndex` is the zero-based position of the first character in the substring, and `length` is the number of characters in the substring. For example, if the string is "Hello", then `string.Substring(1, 2)` will return "el", as it starts from the second character (index 1) and takes two characters. To return four characters starting with the second character, the `startIndex` should be 1 and the `length` should be 4. Therefore, the expression should be: `StrVar.Substring(1, 4)`
References: Substring and How to manipulate a part of string: Split, Trim, Substring, Replace, Remove, Left, Right from UiPath documentation and forum.

NEW QUESTION 36

A developer defines new log fields using the Add Log Fields activity. When will the custom log fields stop being added to the robot execution logs?

- A. When an Exception is caught and handled.
- B. When a Remove Log Fields activity is used to remove them.
- C. When a Log Message activity is executed with Log Level = Warn or higher.
- D. When the first Log Message activity is executed.

Answer: B

Explanation:

The Add Log Fields activity adds custom log fields to the Robot Execution Logs for every Log Message execution throughout the entire workflow¹. The custom log fields will persist until a Remove Log Fields activity is used to remove them². The other options are not correct.
References:
? Add Log Fields documentation, Description section
? Add log field forum post, Answer by @vvaidya

NEW QUESTION 41

In the context of the REFramework, if the OrchestratorQueueName key is present in both the Settings and Assets sheets, but an asset with the corresponding name is not present in Orchestrator, what will be the behavior at run time?

- A. The flow will throw an exception in InitAllSettings workflow.
- B. The flow will use the value from the Settings sheets since the asset is missing.
- C. An empty string will be saved for the "OrchestratorQueueName" key in the config dictionary.
- D. The "OrchestratorQueueName" key is not added to the config dictionary and the flow will throw in Get Transaction Data workflow.

Answer: B

Explanation:

The REFramework template is a robust and scalable framework for building RPA projects¹. It uses a config file to store the settings and constants that are used throughout the project². The config file has two sheets: Settings and Assets. The Settings sheet contains the key-value pairs that are read by the InitAllSettings workflow and stored in the config dictionary. The Assets sheet contains the names of the assets that are stored in Orchestrator and need to be retrieved by the InitAllApplications workflow. The OrchestratorQueueName key is used to specify the name of the queue that is used to store the transaction items for the process. If the OrchestratorQueueName key is present in both the Settings and Assets sheets, but an asset with the corresponding name is not present in Orchestrator, the behavior at run time will be as follows:
? The InitAllSettings workflow will read the value of the OrchestratorQueueName key from the Settings sheet and store it in the config dictionary.
? The InitAllApplications workflow will try to retrieve the asset with the name OrchestratorQueueName from Orchestrator using the Get Asset activity. Since the asset does not exist, the activity will throw an exception.
? The exception will be caught by a Try Catch block and handled by a Log Message activity with level Warning and message "Asset not found: OrchestratorQueueName".
? The flow will continue with the next asset in the Assets sheet or move to the next state if there are no more assets.
? The flow will use the value of the OrchestratorQueueName key from the config dictionary whenever it needs to access or update the queue.
Therefore, option B is correct. Option A is incorrect because the exception is thrown in InitAllApplications workflow, not InitAllSettings workflow. Option C is incorrect because an empty string is not saved for the OrchestratorQueueName key in the config dictionary. Option D is incorrect because the OrchestratorQueueName key is added to the config dictionary and the flow does not throw in Get Transaction Data workflow.
References:
? How to Use Enhanced REFramework to Implement UiPath Projects article from UiPath
? Config.xlsx documentation from UiPath
? [InitAllSettings.xml] documentation from UiPath
? [InitAllApplications.xml] documentation from UiPath
? [TransactionItem Variable] documentation from UiPath

NEW QUESTION 42

In the Output property of all Get Mail activities, what is the supported variable type?

- A. String
- B. List<String>
- C. MailMessage
- D. List<MailMessage>

Answer: D

Explanation:

In the Output property of all Get Mail activities, the supported variable type is List<MailMessage>. The Output property is the property that stores the result of the activity in a variable. The Get Mail activities are the activities that retrieve email messages from various mail servers, such as POP3, IMAP, Outlook, or Exchange. The result of the Get Mail activities is a collection of email messages that match the specified criteria, such as the mail folder, the filter, or the top count. The collection of email messages is represented by the List<MailMessage> type, which is a generic list that contains MailMessage objects. A MailMessage object is a class that represents an email message, with properties such as Subject, Body, Attachments, From, To, etc¹. For example, if the Get Mail activity is used to retrieve the email messages from the Inbox folder of an Outlook account, the Output property can be configured with a variable of type List<MailMessage>, such as mailList. The mailList variable will store the email messages as a list of MailMessage objects, which can then be accessed or manipulated using other activities,

such as For Each, Save Attachments, or Send Mail2.

References: MailMessage Class and Get Outlook Mail Messages from UiPath documentation

NEW QUESTION 46

In which situation will a UI Automation activity generate a partial selector?

- A. When included after a Find Element activity
- B. When included in an Attach Browser activity
- C. When included in an Excel Application Scope activity
- D. When included in a Trigger Scope activity

Answer: B

Explanation:

A partial selector is a selector that does not contain the information about the top-level window. A partial selector is usually generated when a UI Automation activity is included in a container activity, such as Attach Browser or Attach Window, that has a full selector of the outer window. This way, the UI Automation activity can use the partial selector relative to the container, instead of the full selector from the root. Therefore, the answer is B. When included in an Attach Browser activity. References: Full Versus Partial Selectors, Attach Browser

NEW QUESTION 51

In a UiPath REFramework project, what is the primary purpose of using Custom Log Fields?

- A. To add specific contextual information to log messages that are relevant to the automation process.
- B. To generate extra variables alongside log messages, enhancing workflow understanding.
- C. To maintain contextual insights within log messages, including secure details like credentials.
- D. To modify the representation of logged contextual data as it is displayed in the Orchestrator.

Answer: A

Explanation:

The Add Log Fields activity allows developers to create custom log fields that are added to the Robot Execution Logs. These custom log fields can be used to store and display additional information that is relevant to the automation process, such as transaction ID, invoice number, customer name, etc. The custom log fields can help to improve the traceability and analysis of the automation process, as well as to filter and group the logs based on specific criteria. (UiPath Automation Developer study guide)

References:

? Add Log Fields

? Logging and Log Levels

NEW QUESTION 56

Which of the following is a valid area/panel, from the UiPath Studio interface, from where a variable can be created?

- A. Activities Panel
- B. Locals Panel
- C. Data Manager Area
- D. Project Panel

Answer: A

Explanation:

Variables can be created from different areas or panels in the UiPath Studio interface, such as the body of an activity, the properties panel, the expression editor, or the variables panel. However, the activities panel is the only one among the given options that is a valid area for creating variables. The activities panel contains a list of activities that can be dragged and dropped to the designer panel to build workflows. By right-clicking a field in an activity and selecting Create Variable from the context menu, or pressing Ctrl+K, a variable can be created and assigned to that field. The variable's type and scope are automatically determined based on the activity and the container it is part of.

References:

? Create Variables Tutorial in Studio | UiPath

? Studio - Managing Variables - UiPath Documentation Portal

? Managing Variables - UiPath Studio

NEW QUESTION 58

What are the three main components of UiPath Integration Service?

- A. Connectors, API Tokens, Triggers.
- B. Connectors, Connections, Orchestrator.
- C. Connectors, Connections, Triggers.
- D. Activities, Connections, Triggers.

Answer: C

Explanation:

UiPath Integration Service is a feature that enables you to integrate UI and API automation in a unified way. The three main components of UiPath Integration Service are:

? Connectors: These are pre-built or custom components that provide access to various applications or systems through their APIs. You can use connectors to perform actions or retrieve data from different sources, such as Salesforce, Slack, Google Sheets, etc. (UiPath Integration Service documentation1)

? Connections: These are configurations that store the authentication and connection details for each connector. You can create and manage connections in the UiPath Automation Cloud and share them across different folders and processes. (UiPath Integration Service documentation2)

? Triggers: These are rules that define when and how to start a process in

Orchestrator based on events from connectors. You can configure triggers to react to data changes, insertions, deletions, or custom events in the connected applications or systems. (UiPath Integration Service documentation³)

References:

- ? 1: Integration Service - Connectors - UiPath Documentation Portal.
- ? 2: Integration Service - Connections - UiPath Documentation Portal.
- ? 3: Integration Service - Triggers - UiPath Documentation Portal.

NEW QUESTION 59

What is the purpose of the Interval filter in the Orchestrator's Monitoring page?

- A. It allows you to control the granularity of the displayed data and check the health of your system in either the last day or the last hour.
- B. It allows you to allocate licenses per machine for the displayed data.
- C. It allows you to choose between background and foreground processes for the displayed data.
- D. It enables you to sort the displayed data based on job priorities.

Answer: A

Explanation:

The Interval filter in the Orchestrator's Monitoring page lets you select the time range for the data that is displayed on the dashboard¹. You can choose between Last Day and Last Hour options to view the performance and health indicators of your system at different levels of detail².

References:

- ? Monitoring documentation, Interval Filter section
- ? UiPath Orchestrator Monitoring video, 2:10 - 2:30

NEW QUESTION 61

A developer creates a process that uses data from multiple sources and uploads it to an Orchestrator queue. The data originates from emails in different email inboxes and needs to be processed

in the same order in which the email was received. To ensure the Queue Items are processed in the correct order, which property of the Add Queue Item activity should be used?

- A. Postpone
- B. ItemInformation
- C. Reference
- D. Deadline

Answer: A

Explanation:

The Postpone property of the Add Queue Item activity allows you to specify a date and time when the queue item becomes available for processing. This can be used to ensure that the queue items are processed in the same order as the emails were received, by setting the Postpone value to the email received date and time. (UiPath Studio - Add Queue Item - UiPath Academy)

References:

- ? Studio - Add Queue Item - UiPath Documentation Portal
- ? UiPath Studio - Add Queue Item - UiPath Academy
- ? How to use Postpone property in Add Queue Item activity? - Studio - UiPath Community Forum

NEW QUESTION 65

Which of the following functionalities does UiPath Assistant provide?

- A. Developing automation workflows in UiPath Studio.
- B. Running, managing, and organizing automation workflows on the user's machine.
- C. Scheduling and monitoring robot processes in Orchestrator.
- D. Analyzing processes to determine optimal automation solutions.

Answer: B

Explanation:

UiPath Assistant is a desktop tool that enables users to easily access, manage, and run automation workflows on their machines. It provides the following functionalities:

- ? Viewing all the available automations that the user can run, either from Orchestrator or locally.
- ? Adding automations to the launchpad for quick and easy access.
- ? Creating custom folders and sections to organize the automations according to the user's preferences.
- ? Running automations with a single click or using keyboard shortcuts.
- ? Launching robot-powered apps and managing action center tasks directly from the assistant.
- ? Customizing the assistant's appearance, name, and avatar to suit the user's personality.
- ? Viewing the status and progress of the running automations, as well as the history and logs of the past executions.
- ? Connecting to Orchestrator and synchronizing the automations and settings with the cloud.
- ? Accessing the help and feedback options, as well as the interactive guided tour. References:
- ? Software Robot Assistant - Desktop Automation | UiPath
- ? Robot - About UiPath Assistant - UiPath Documentation Portal

NEW QUESTION 68

A developer is working with an application that allows all types of input methods for the Type Into activity. Which property should be enabled for the fastest execution?

- A. Click before typing
- B. Empty field
- C. Simulate

D. Window Messages

Answer: C

Explanation:

The Simulate option is a property of the Type Into activity that enables the fastest execution of the activity. This is because the Simulate option does not rely on the hardware drivers or the UI elements to perform the typing action. Instead, it uses the technology of the target application to directly inject the text as a stream of characters. This makes the Simulate option faster, more reliable, and more compatible than the other input methods. The Simulate option also allows the activity to run in the background, meaning that it does not require the application to be in focus or visible.

References:

? Type Into - UiPath Activities

? Input Methods - UiPath Studio

? UiPath Type Into Activity: Step-by-Step Guide with Examples - RPA Tutorial

NEW QUESTION 72

A developer is building a process that needs to click an element which requires a mouse hover to become visible. However, the element does not appear with the default click setting. The input method for the Click activity is Send Window Message
Which property should the developer configure to be able to click the element?

- A. The developer should change the input method to Hardware Events and the CursorMotionType to Smooth.
- B. The property AlterIfDisabled should be set to True.
- C. The developer should change the input method to Simulate and the CursorMotionType to Instant.
- D. The property AlterIfDisabled should be set to False.

Answer: A

Explanation:

The input method for the Click activity determines how the click is performed on the target element. The Send Window Message input method is fast and reliable, but it does not support hovering over elements. Therefore, the developer should use the Hardware Events input method, which simulates the real mouse and keyboard actions. The CursorMotionType property specifies how the cursor moves to the target element. The Smooth option makes the cursor move in a natural way, which can trigger the hover effect on the element. (UiPath Studio documentation12)

References:

? 1: Input Methods - UiPath Studio.

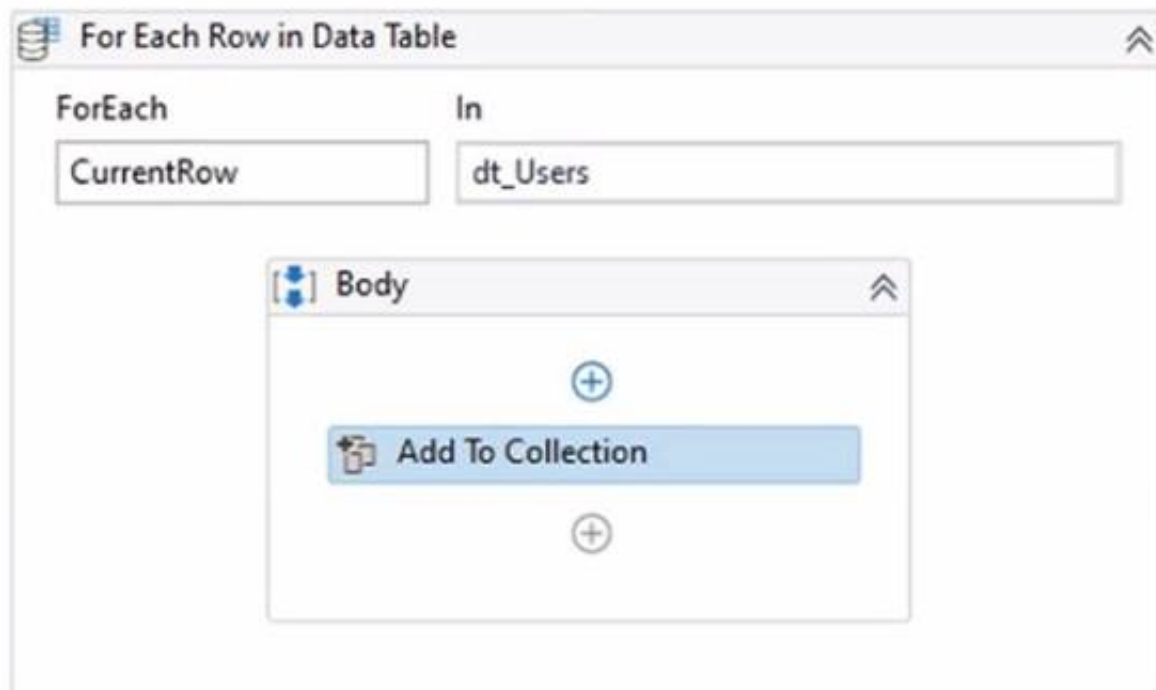
? 2: Click - UiPath Activities.

NEW QUESTION 77

A developer created a datatable, dt_Users as shown in the following exhibit.



After populating the datatable variable, the developer wants to assign each User ID in dt_Users to a List<String> variable Users_List. To achieve this, the developer plans to use an Add To Collection activity inside a For Each Row activity.



How should the Item property of the Add To Collection activity be configured?

- A. CurrentRow(0).ToString
- B. CurrentRow(1).ToString
- C. dt.Users(0).ToString
- D. dt.Users(1).ToString

Answer: A

Explanation:

To assign each User ID in dt.Users to a List<String> variable Users_List, the Item property of the Add To Collection activity should be configured as: CurrentRow(0).ToString

This expression accesses the value of the first column (index 0) in the current row of the dt.Users datatable using the CurrentRow variable. The CurrentRow variable is a DataRow object that represents the row that is being iterated in the For Each Row activity. The expression uses the ToString method to convert the value of the User ID column to a string type. The expression returns the User ID value as a string, which is then added to the Users_List variable by the Add To Collection activity. For example, if the dt.Users datatable has the following values:

User ID Name 101

John 102

Mary 103

Bob

Then the expression CurrentRow(0).ToString will return 101, 102, and 103 as the User ID values in each iteration of the For Each Row activity, and these values will be added to the Users_List variable.

References: Add To Collection and For Each Row from UiPath documentation.

NEW QUESTION 80

Which dependencies are automatically installed when a developer starts a blank process in UiPath Studio?

- A. UiPath.Database.Activities and UiPath.Form.Activities.
- B. UiPath.Python.Activities and UiPath.Word.Activities.
- C. UiPath.System.Activities, UiPath.Excel.Activities, UiPath.Mail.Activities, UiPath.UIAutomation.Activities and UiPat
- D. Testing.Activities.
- E. UiPath.PDF.Activities and UiPat
- F. Terminal.Activities.

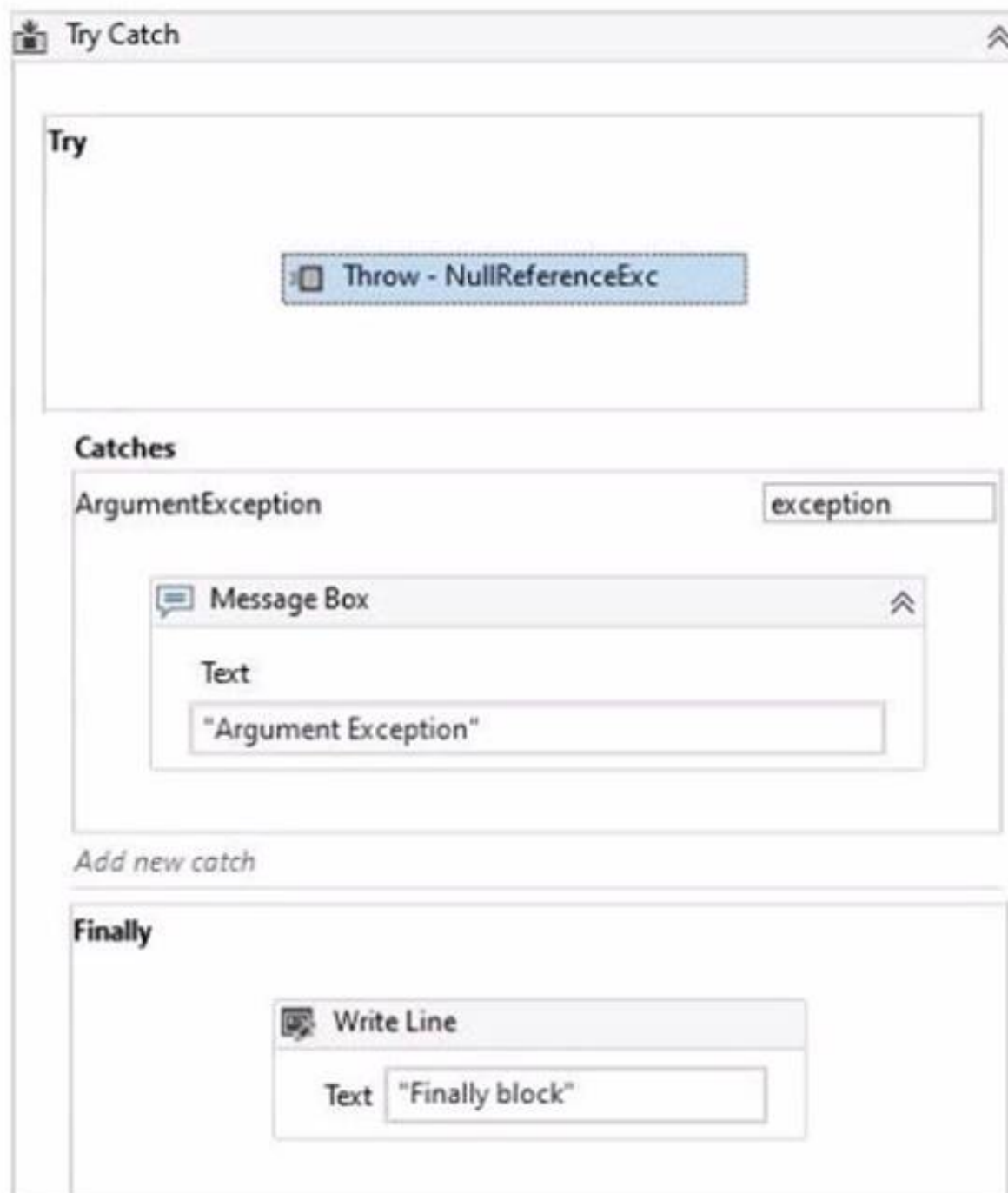
Answer: C

Explanation:

When a developer starts a blank process in UiPath Studio, the following dependencies are automatically installed by default: UiPath.System.Activities, UiPath.Excel.Activities, UiPath.Mail.Activities, UiPath.UIAutomation.Activities and UiPath. Testing.Activities. These dependencies provide the basic activities and packages that are needed for most automation projects, such as working with data types, files, Excel, email, user interface, and testing. The developer can also add or remove other dependencies as needed, depending on the specific requirements of the automation project. References: Creating a Basic Process, Managing Dependencies.

NEW QUESTION 84

In the Catches section of the Try Catch activity a developer selected ArgumentException in the exception handler.



What happens when the activity encounters a NullReferenceException?

- A. The Finally block is not executed and a runtime error occurs.
- B. The Finally block executes and no exception is thrown.
- C. The Catches section catches the exception and the Finally block is executed.
- D. The Catches section catches the exception and the Finally block is skipped.

Answer: A

Explanation:

When the activity encounters a NullReferenceException, the Finally block is not executed and a runtime error occurs. This is because the Catches section of the Try Catch activity only handles the ArgumentException type, which is a specific type of exception that occurs when one of the arguments provided to a method is not valid¹. A NullReferenceException is a different type of exception that occurs when there is an attempt to dereference a null object reference². Since the Catches section does not have a handler for the NullReferenceException type, the exception is not caught and the execution is stopped with a runtime error. The Finally block, which contains the activities that are always executed regardless of the outcome of the Try Catch activity, is also skipped³. References: ArgumentException Class, NullReferenceException Class, and Try Catch from UiPath documentation.

NEW QUESTION 85

A developer wants to create an automation in which the input from the user and pre- defined conditions determine the transition between stages. In UiPath Studio, which is the recommended type of workflow that meets the requirement?

- A. Workflow
- B. Global Exception Handler
- C. Flowchart
- D. State Machine

Answer: C

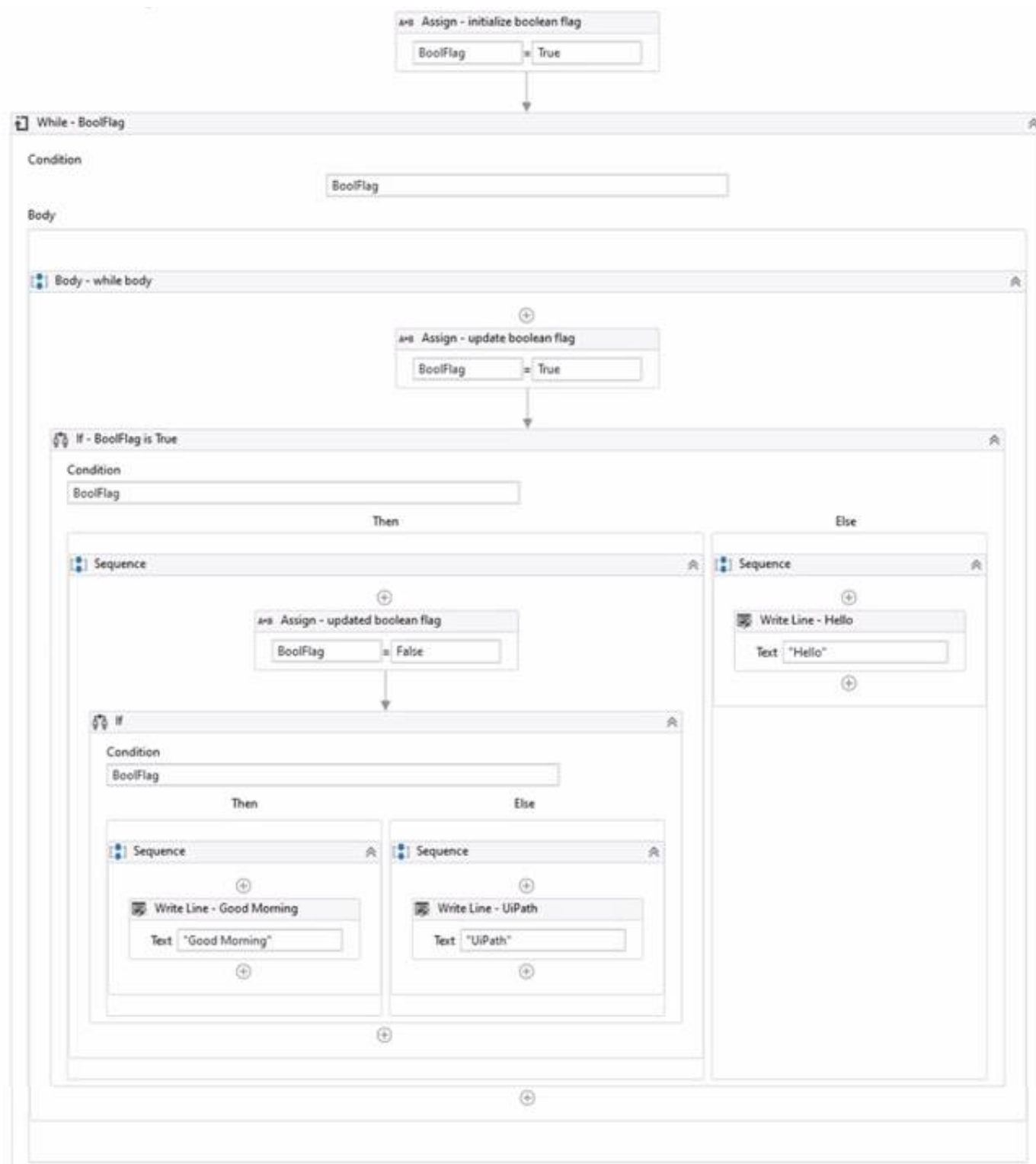
Explanation:

A flowchart is a type of workflow that allows developers to create complex and dynamic automation processes that can branch based on user input or predefined conditions. Flowcharts use graphical elements such as shapes, connectors, and annotations to represent the flow of logic and data between different stages or activities. Flowcharts are suitable for scenarios where the automation process is not linear or sequential, but rather depends on various factors and decisions. (UiPath Automation Developer study guide) References:

- ? Flowchart
- ? Types of Workflows

NEW QUESTION 86

Review the following exhibit.



Based on the exhibit, which output is produced in the Output panel?

- A. Hello
- B. Good Morning UiPath
- C. Good Morning
- D. UiPath

Answer: C

Explanation:

Based on the exhibit, the output produced in the Output panel is “Good Morning”. This is because the “If” activity checks if the “BoolFlag” variable is True. If it is True, the “Then” branch is executed, which contains a “Write Line” activity with the text “Good Morning”. If the “BoolFlag” variable is False, the “Else” branch is executed, which contains a “Write Line” activity with the text “UiPath”. Since the “BoolFlag” variable is assigned to True in the previous “Assign” activity, the condition of the “If” activity is satisfied, and the “Then” branch is executed. Therefore, the “Write Line” activity writes “Good Morning” to the Output panel.

References: If and How to put a if condition in assign activity? from UiPath documentation and forum.

NEW QUESTION 88

A developer intends to enter text into an input field using a combination of a string and a hotkey. The input action should take place within a hidden or minimized window.

Which input method(s) can be used individually for the Type Into activity?

- A. Simulate only.
- B. Simulate and Window Messages.
- C. Same as App/Browser and Simulate.
- D. Window Messages only.

Answer: B

Explanation:

The Type Into activity is used to enter text in a specified UI element, such as a text box. It has three input methods that can be selected from the properties panel: Default, Simulate, and Window Messages¹. Each input method has different advantages and limitations, depending on the target application and the automation scenario².

? The Default input method uses the hardware driver to simulate the keystrokes, as if a human user is typing on the keyboard. It is the most reliable and compatible input method, but it requires the target application to be in focus and visible on the screen. It also supports sending special keys, such as Tab or Enter, using brackets [k(enter)] or [k(tab)].

? The Simulate input method uses the technology of the target application to directly

inject the text into the UI element. It does not rely on the hardware driver, so it can work in the background, even if the target application is hidden or minimized. It

also supports sending special keys using brackets [k(enter)] or [k(tab)]. However, it may not be compatible with some applications or UI elements that do not support this method.

? The Window Messages input method uses the Windows API to send messages

directly to the target application. It can also work in the background, even if the target application is hidden or minimized. It does not support sending special keys using brackets [k(enter)] or [k(tab)], but it can send them using modifiers such as

{ENTER} or {TAB}. However, it may not be compatible with some applications or UI elements that do not accept window messages.

Therefore, if a developer intends to enter text into an input field using a combination of a string and a hotkey, and the input action should take place within a hidden or minimized window, they can use either the Simulate or the Window Messages input method individually for the Type Into activity. They cannot use the Default input method, because it requires the target application to be in focus and visible on the screen. They also cannot use the Same as App/Browser input method, because it is not an option for the Type Into activity.

References:

? Type Into - UiPath Documentation Portal.

? What are different Input methods in UiPath - UiPath Community Forum.

NEW QUESTION 89

In a UiPath project that uses State Machines, under what circumstances should the Final State activity be used in the project?

- A. When initiating the first state of a state machine.
- B. When marking the successful completion or termination of a state machine's execution.
- C. When a particular state contains complex conditional logic.
- D. When an intermediary state has multiple possible transitions.

Answer: B

Explanation:

The Final State activity is used to indicate the end of a state machine's execution, either successfully or with an error¹. The Final State activity has only one section, Entry, where you can add activities to perform before exiting the state machine². You can have more than one Final State in a state machine, but you can only create one Initial State³. The Final State activity should be used when you want to mark the completion or termination of a state machine's execution, not when initiating the first state, handling complex logic, or having multiple transitions.

<https://docs.uipath.com/activities/other/latest/workflow/final-state>

NEW QUESTION 91

Given the following list of arguments:

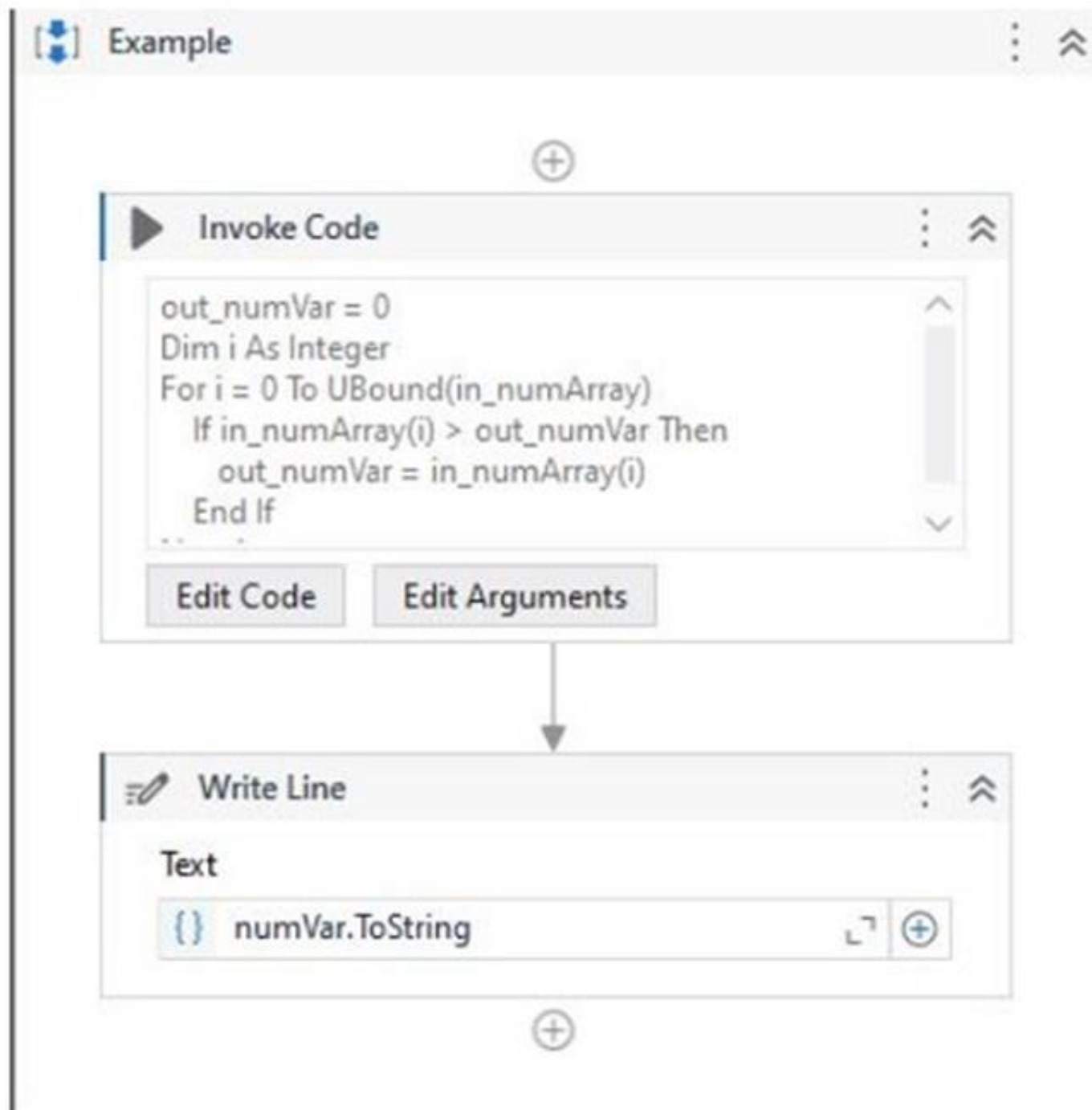
Invoked code arguments			
Name	Direction	Type	Value
in_numArray	In	Int32[]	{2,5,1,7,9,4,8}
out_numVar	Out	Int32	numVar
Create Argument			
OK Cancel			

And the following code:

```

VB.Net Code
1  out_numVar = 0
2  Dim i As Integer
3  For i = 0 To in_numArray.Length-1
4      If in_numArray(i) > out_numVar Then
5          out_numVar = in_numArray(i)
6      End If
7  Next i
    
```

What is the value that will be displayed in the Output Panel at the end of the sequence below:



- A. 1
- B. 2
- C. 7
- D. 9

Answer: D

Explanation:

The code in the Invoke Code activity is looping through an array of integers and checking if the current value is greater than the previous value. If it is, the current value is stored in the output variable. Since the last value in the array is 9, this will be the final value of the output variable. (UiPath Studio - Invoke Code - UiPath Academy)

References:

? Studio - Invoke Code - UiPath Documentation Portal

? UiPath Studio - Invoke Code - UiPath Academy

NEW QUESTION 95

A developer is building a process that types data into input fields using the Hardware Events input method. Which property of the Type Into activity should be modified to reduce the pace at which the input string characters are typed into the fields?

- A. Delay before
- B. Alter disabled element
- C. Delay between keys
- D. Delay after

Answer: C

Explanation:

The Delay between keys property of the Type Into activity specifies the time (in milliseconds) between each keystroke when using the Hardware Events input method. Increasing this value can slow down the typing speed and reduce the risk of missing or skipping characters. (UiPath Automation Developer study guide)

References:

? Type Into

? Input Methods

NEW QUESTION 97

Which of the following describes the correct hierarchy of the elements in the Object Repository tree structure?

- A. Screen, Application, Version, UI Element.

- B. Application, Version, Screen, UI Element.
- C. Application, Screen, UI Element, Version.
- D. Version, Application, Screen, UI Element.

Answer: B

Explanation:

The Object Repository tree structure follows a hierarchical order that starts with the Application node, which represents the application or system that contains the UI elements to be automated. Under the Application node, there can be one or more Version nodes, which specify the version of the application or system. Each Version node can have one or more Screen nodes, which represent the different screens or windows of the application or system. Finally, each Screen node can have one or more UI Element nodes, which are the individual UI elements that can be used for automation. (UiPath Automation Developer study guide)

References:

- ? Object Repository Tree Structure
- ? Object Repository

NEW QUESTION 100

A user reported unexpected behavior from a process that is in Production. After reviewing the process, a developer noticed that one of the Queue Items that was processed has a status of "Abandoned" in UiPath Orchestrator.

When is a Queue Item moved to an "Abandoned" status in UiPath Orchestrator?

- A. When the item has been manually selected from the Transactions page and marked as "Deleted"
- B. When the item was "In Progress" but the transaction status was never set to "Successful" or "Failed"
- C. When the item did not meet a business or application requirement within the project.
- D. When the item was processed with the Get Transaction Item activity

Answer: B

Explanation:

A Queue Item is moved to an "Abandoned" status in UiPath Orchestrator when the item was "In Progress" but the transaction status was never set to "Successful" or "Failed". This can happen when the item remained in the "In Progress" status for a long period of time (approx. 24 hours) without being processed, or when the Robot that was processing the item encountered an error or was stopped¹. The "Abandoned" status indicates that the item was not completed and needs to be retried or deleted. The item can be retried manually from the Transactions page in Orchestrator, or programmatically using the API². The item can also be deleted manually from the Transactions page, or automatically using the Auto Delete option in the Queue settings³. References: Queue Item Statuses, Changing the abandon status of Queue Transaction, and About Queues and Transactions from UiPath documentation and forum.

NEW QUESTION 104

Which two parts are included in an Anchor Base activity?

- A. Anchor and Action
- B. Anchor and Condition
- C. Anchor and Trigger Scope
- D. Anchor and Sequence

Answer: A

Explanation:

The two parts that are included in an Anchor Base activity are Anchor and Action. The Anchor Base activity is a container that searches for a UI element by using other UI elements as anchors. This should be used when a reliable selector is not available. The Anchor Base activity has two sections: Anchor and Action. The Anchor section contains an activity that identifies the anchor element, such as Find Element or Find Image. The Action section contains an activity that performs an action on the target element, such as Click or Type Into. The Anchor Base activity also has a property called AnchorPosition, which specifies the relative position of the target element to the anchor element, such as left, right, top, or bottom². For example, if the Anchor Base activity is used to click on a button that is always to the right of a label, the Anchor section can use the Find Element activity to find the label, the Action section can use the Click activity to click on the button, and the AnchorPosition property can be set to Right³.

References: Anchor Base and How to properly use AnchorBase activity? from UiPath documentation and forum.

NEW QUESTION 107

What is the functionality of the Include Subfolders filter in the Monitoring pages when a modern folder is selected?

- A. It allows you to choose between background and foreground processes for the displayed data.
- B. It allows you to select whether the contents of the selected folder's subfolders are displayed.
- C. It enables you to sort the displayed data based on job priorities.
- D. It allows you to allocate licenses per machine for the displayed data.

Answer: B

Explanation:

The Include Subfolders filter is a toggle button that appears in the Monitoring pages when a modern folder is selected from the Folders drop-down list¹. The modern folders are folders that can have subfolders and support role-based access control². The Include Subfolders filter allows you to choose whether to display the data for the selected folder only, or for the selected folder and all its subfolders³. This filter applies to the Jobs, Queues, Triggers, and Robots pages⁴. The Include Subfolders filter helps you to monitor and manage the processes and resources across different levels of folders. <https://forum.uipath.com/t/read-all-file-from-sub-folder-and-sub-folder-of-sub-folder/460493>

NEW QUESTION 109

During which stage does an automation developer have the least contribution and responsibility?

- A. In the Discovery and Kickoff, Process Analysis, and Solution Design stages.
- B. In the Development and Unit Testing, Integration and UAT, and Deployment and Hypercare stages.
- C. In the Solution Design, Development and Unit Testing, and Deployment and Hypercare stages.

D. In the Discovery and Kickoff, Development and Unit Testing, and Deployment and Hypercare stages.

Answer: A

Explanation:

According to the UiPath Automation Implementation Methodology, the automation lifecycle consists of six stages: Discovery and Kickoff, Process Analysis, Solution Design, Development and Unit Testing, Integration and UAT, and Deployment and Hypercare. The automation developer has the least contribution and responsibility in the first three stages, as they are mainly focused on identifying, analyzing, and designing the automation solution. The automation developer's role is more prominent in the last three stages, as they are responsible for developing, testing, deploying, and monitoring the automation projects and components. References: Automation Lifecycle - Standalone, Automation Developer

NEW QUESTION 111

A developer initialized a String array, `listOfMonthsByQuarter = {"1", "2", "3"}` Which data type and value are retrieved when `listOfMonthsByQuarter(2)` is used at runtime?

- A. Data Type Int32 Value: 2
- B. Data Type- Int32 Value: 3
- C. Data Type: String Value: 3
- D. 2
- E. Data Type: String Value: 3
- F. String: Value 3

Answer: D

Explanation:

The `listOfMonthsByQuarter` variable is a String array, which means it can store multiple values of type String. Each value in the array has an index, which is a number that indicates its position in the array. The index starts from 0, so the first value has index 0, the second value has index 1, and so on. To access a specific value in the array, we can use the syntax `arrayName(index)`. For example, `listOfMonthsByQuarter(0)` will return the first value in the array, which is "1". Similarly, `listOfMonthsByQuarter(2)` will return the third value in the array, which is "3". Therefore, the data type of `listOfMonthsByQuarter(2)` is String, and the value is "3". References: Arrays and Variables from UiPath documentation.

NEW QUESTION 114

Which logging level includes the following information by default?

- * 1. Execution Started log entry - generated every time a process is started.
- * 2. Execution Ended log entry - generated every time a process is finalized.
- * 3. Transaction Started log entry - generated every time a transaction item is obtained by the robot from Orchestrator.
- * 4. Transaction Ended log entry - generated every time the robot sets the transaction status to either Success or Failed.
- * 5. Activity Information log entry - generated every time an activity is started, faulted or finished inside a workflow.
- * 6. Arguments and Variables Information log entry - show values of the variables and arguments that are used.

- A. Critical
- B. Trace
- C. Verbose
- D. Information

Answer: C

Explanation:

The Verbose logging level includes all the information that is logged by the other levels, plus the values of the variables and arguments that are used in the process. By default, the Verbose level includes the following log entries:

- ? Execution Started
- ? Execution Ended
- ? Transaction Started
- ? Transaction Ended
- ? Activity Information
- ? Arguments and Variables Information <https://docs.uipath.com/robot/standalone/2023.4/user-guide/logging-and-log-levels>

NEW QUESTION 118

Where can a process be found, after being published from UiPath Studio and deployed as an automation in Orchestrator?

- A. Manage Packages
- B. UiPath Assistant
- C. Resources Panel
- D. Snippets Panel

Answer: B

Explanation:

A process can be found in the UiPath Assistant after being published from UiPath Studio and deployed as an automation in Orchestrator. UiPath Assistant is a desktop tool that enables users to easily access, manage, and run automation workflows on their machines. It displays all the available automations that the user can run, either from Orchestrator or locally. To run an automation from Orchestrator, the user needs to connect the UiPath Assistant to Orchestrator and synchronize the automations and settings with the cloud. The user can also add automations to the launchpad for quick and easy access, create custom folders and sections to organize the automations, view the status and progress of the running automations, and access the help and feedback options.

References:

- ? Software Robot Assistant - Desktop Automation | UiPath
- ? Robot - About UiPath Assistant - UiPath Documentation Portal

NEW QUESTION 119

A developer wants to run two processes on the same machine, the first process contains only HTTP Request activities and the second one performs UI

Automation. What option needs to be enabled on the first process in order to ensure that the processes can run concurrently on the same machine?

- A. Starts in Background
- B. Attended Automation
- C. Disable Pause
- D. Supports Persistence

Answer: A

Explanation:

The Starts in Background option is a property of the process that indicates whether the process can run in parallel with other processes on the same machine. If this option is enabled, the process can run as a background process, meaning that it does not require user interaction or UI automation. This allows the process to run concurrently with another process that performs UI automation, such as the second process in the question. The Starts in Background option can be configured in the project settings of the process in UiPath Studio, or in the process settings in Orchestrator.

References:

- ? Background Process - UiPath Studio
- ? Background Process Automation - UiPath Robot
- ? Managing Processes - UiPath Orchestrator

NEW QUESTION 120

A developer wants to extract hidden text from a pdf file. Which output method(s) should be used?

- A. FullText and Native
- B. Native only
- C. OCR
- D. FullText only

Answer: D

Explanation:

To extract hidden text from a pdf file, the output method that should be used is FullText only. The FullText output method is one of the options available in the Read PDF Text activity, which reads all the characters from a specified pdf file and stores them in a string variable³. The FullText output method extracts the text from the pdf file as it is, without keeping the formatting or the position of the text. The FullText output method can also extract the hidden text from the pdf file, which is the text that is not visible on the screen, but can be copied and pasted into another application⁴. For example, the hidden text can be the metadata, comments, or annotations of the pdf file. The FullText output method is suitable for extracting hidden text from a pdf file, as it does not depend on the visibility or the layout of the text. The other output methods, such as Native or OCR, are not suitable for extracting hidden text from a pdf file, as they rely on the appearance or the position of the text on the screen. The Native output method preserves the formatting and the position of the text, but it cannot extract the text that is not visible or selectable⁵. The OCR output method converts the text from the pdf file into an image and then extracts the text from the image, but it cannot extract the text that is not displayed or recognized by the OCR engine⁶.

References: Read PDF Text, Extracting Hidden Text from PDF, Native, and OCR from UiPath documentation and forum.

NEW QUESTION 124

A developer created a process that performs the following tasks
1 Prompts the user for an input company name
2. Opens a browser and searches for the company name
3. Scrapes the search results
4. Writes the results to a Microsoft Excel file
What is the total number of steps that require human interaction?

- A. One
- B. Two
- C. Three
- D. Four

Answer: A

Explanation:

The only step that requires human interaction is the first one, where the user is prompted for an input company name. The rest of the steps are performed by the automation process without any human intervention.

NEW QUESTION 128

What method can be used to change the index of an existing column in a datatable?

- A. SetIndex
- B. MoveAt
- C. SetColumnIndex
- D. SetOrdinal

Answer: D

Explanation:

The SetOrdinal method of the DataColumn class can be used to change the index or position of an existing column in a datatable. The method takes an integer argument that specifies the new ordinal or position of the column. For example, to move the first column to the last position, one can use: `yourDataTable.Columns(0).SetOrdinal(yourDataTable.Columns.Count - 1)`. (UiPath Automation Developer study guide)

References:

- ? DataColumn.SetOrdinal Method
- ? How to move Column from Index 0 to Index 10 in datatable

NEW QUESTION 131

What differentiates a List type from an Array type?

- A. List items can be accessed through an index but array items cannot.

- B. An array has a fixed, predefined number of elements while a list has a dynamic number of elements.
- C. A list can hold items of multiple data types at the same time while arrays cannot.
- D. Lists provide the option of looping through data while arrays do not.

Answer: B

Explanation:

Both list and arrays are a collection type of variables that can store multiple values of the same data type. The main difference between them is if their size is fixed or not. Array has a fixed size, meaning that if you create an array containing 3 elements, you can't add more than 3 or reduce its size. List has a dynamic size, meaning that you can add or remove elements as you need. List also provides some methods that can be invoked to perform operations on the elements, such as sorting, reversing, finding, etc. Array does not have such methods, but it is more optimized for arithmetic computations.

References:

- ? Differences between a list and an array - UiPath Community Forum
- ? Array manipulation with UiPath (List, Dictionary, Array) - F-PenIT blog
- ? List Collection ArrayList - Activities - UiPath Community Forum

NEW QUESTION 132

Upon extracting data from a website, a developer saves it in three variables: "FirstName", "LastName", and "City". The developer intends to store these three String variables in a fixed-size data structure called "UserData", to be utilized later within another workflow in the process. Considering best practices, which data structure and assignment should be used?

- A. UserData is of type List<Object>UserData = New List(Of Object) ({ FirstName, LastName, City })
- B. UserData is of type Object[]UserData = {FirstName, LastName, City}
- C. UserData is of type List<String>UserData = New List(Of String) ({ FirstName, LastName, City })
- D. UserData is of type String[]UserData = {FirstName, LastName, City}

Answer: D

Explanation:

This is the best option because it meets the requirements of storing three String variables in a fixed-size data structure. A String[] is an array of String values, which can be initialized with a fixed size and assigned with a set of values using curly braces. An array is a simple and efficient data structure that can store multiple values of the same type and access them by index. A List is another data structure that can store multiple values, but it is not fixed-size and it requires creating a new instance using the New keyword. An Object is a generic type that can store any kind of value, but it is not recommended to use it for specific types like String, as it may cause type conversion errors or performance issues. Therefore, option D is the best choice for storing the three String variables in a fixed-size data structure called UserData. References: Variables, Arguments, and Control Flow in Studio, Data Types in UiPath, Arrays in UiPath

NEW QUESTION 135

A developer is automating an invoice process for the finance department using a Dispatcher and Performer model with access to Orchestrator. New invoices are stored in a shared folder each morning Each invoice needs to be processed separately in the finance system as a single unit of work After each invoice is processed in the finance system, a unique output ID must be emailed to the finance team's email address. How should the developer store the relevant data in Orchestrator?

- A. Upload individual invoice data and the finance team's email address as Specific Data in Queue Items
- B. Upload the finance team's email address as Specific Data in Queue Items Create an asset for each individual invoice data field
- C. Create an asset for each piece of invoice data as well as for the finance team's email address
- D. Upload individual invoice data as Specific Data in Queue Items Create an asset for the finance team's email address

Answer: D

Explanation:

The developer should store the relevant data in Orchestrator as follows:

? Upload individual invoice data as Specific Data in Queue Items. The Specific Data is a collection of key-value pairs that can store additional information for each queue item, such as the invoice number, date, amount, etc. The Specific Data can be added to the queue items using the Add Queue Item activity in the Dispatcher

workflow. The Specific Data can be retrieved from the queue items using the Get Transaction Item activity in the Performer workflow. The Specific Data can be used to process each invoice separately in the finance system as a single unit of work³.

? Create an asset for the finance team's email address. An asset is a global variable that can store a specific value, such as a text, a number, a boolean, or a credential. An asset can be created and managed in Orchestrator, and accessed by the robots using the Get Asset activity. An asset can be used to store a value that is common for all the queue items, such as the finance team's email address. The asset can be used to email the unique output ID to the finance team after each invoice is processed in the finance system⁴.

References: About Queues and Transactions and About Assets from UiPath documentation.

NEW QUESTION 140

You want to identify a selector in a Type into activity that will be used for a text input field within an application. In order for the Type into activity to execute as expected, how many elements in an application can a selector be valid for at runtime?

- A. 1 element
- B. 2 elements
- C. 3 elements
- D. 5 elements

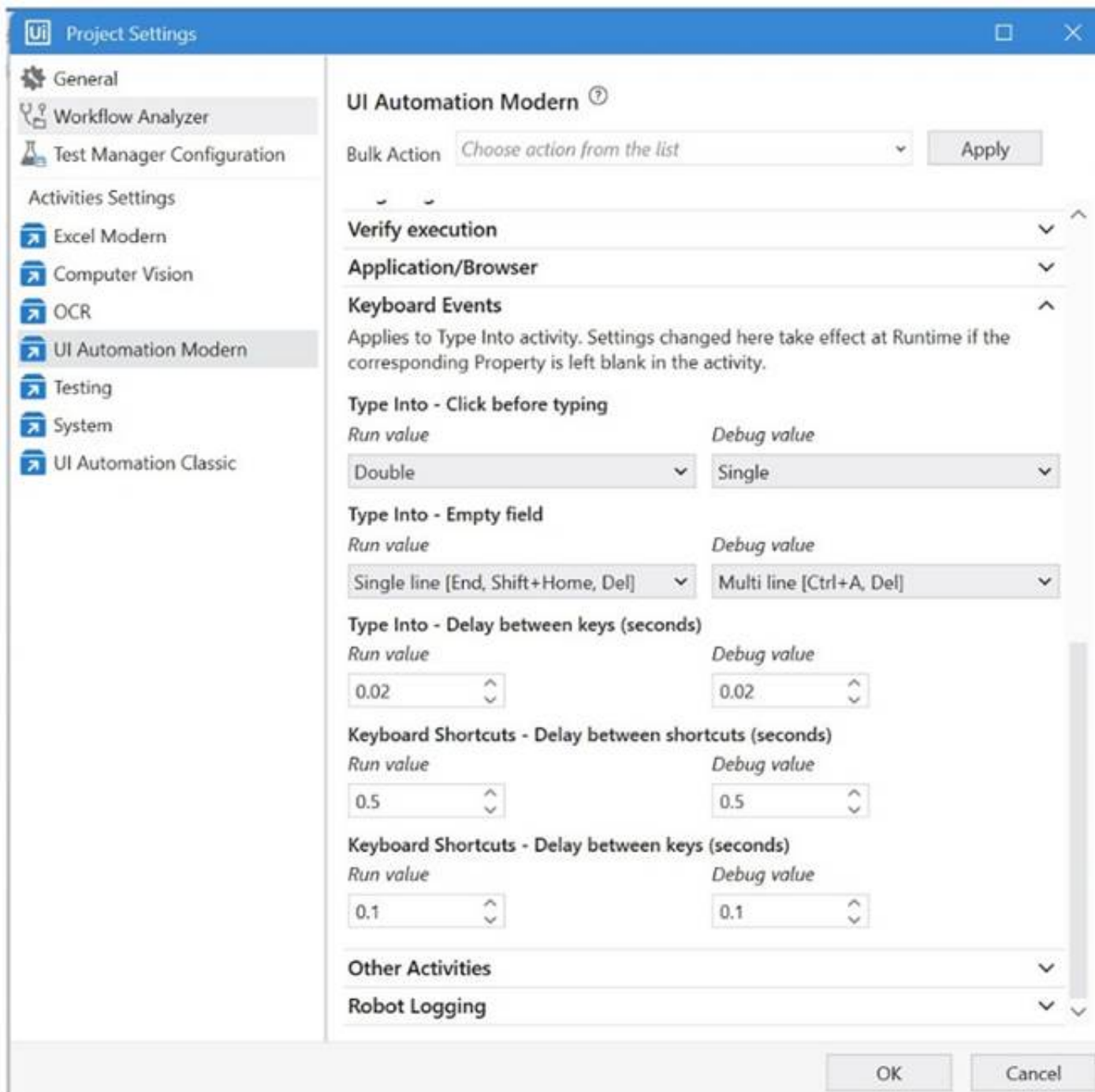
Answer: A

Explanation:


A selector is a string of characters (XML fragment) that identifies a UI element uniquely within the UI hierarchy. A selector must be valid for only one element in an application, otherwise the Type into activity will not be able to find the correct target for typing the text. If a selector is valid for more than one element, it is considered ambiguous and unreliable. Therefore, the answer is A. 1 element. References: Selectors, Type Into

NEW QUESTION 143

A developer is building an automation which types text into a text file. The Activity Project Settings for UI Automation Modern activities are set as follows:



The developer has configured the properties of a **Type Into** activity as follows:



What is the behavior of the Type Into activity when executing the workflow?

- A. The activity will remove Multi Line in Run mode and a Single Line in Debug mode.
- B. The activity will use only properties set in Activity Project Settings.
- C. The activity will remove a Single Line in Run mode and in Debug mode.
- D. The activity will remove a Single Line in Run mode and Multi Line in Debug mode.

Answer: D

Explanation:

The Type Into activity is used to type text into a UI element. The activity has different properties that can be configured to control the input method, the delay between keystrokes, the cursor position, and the text formatting. The Activity Project Settings for UI Automation Modern activities allow you to set the default values for these properties at the project level. However, you can also override these values at the activity level by using the Properties panel. In this case, the Activity Project Settings are set to remove a Single Line in Run mode and Multi Line in Debug mode. This means that when the workflow is executed, the Type Into activity will delete any existing text in the UI element before typing the new text. If the workflow is run in Run mode, only one line of text will be deleted. If the workflow is run in Debug mode, all lines of text will be deleted. (UiPath Studio documentation1)

References:

? 1: Configuring Activity Project Settings - UiPath Studio.

NEW QUESTION 146

A developer is reviewing an existing workflow in UiPath Studio Based on best practices, what should be used to view the available versions for activities used in the workflow?

- A. Workflow Analyzer

- B. Project Dependencies
- C. Project Settings
- D. UI Explorer

Answer: B

Explanation:

To view the available versions for activities used in the workflow, the Project Dependencies option should be used. The Project Dependencies option is located in the Project panel in UiPath Studio. It shows the list of all the packages and activities that are used in the current project, along with their current versions and available updates. The Project Dependencies option also allows the developer to install, update, or remove packages and activities, as well as view their details and documentation². By using the Project Dependencies option, the developer can ensure that the project is using the latest and compatible versions of the activities, and avoid any errors or conflicts that might arise from outdated or missing packages³.

References: Managing Dependencies and Project Dependencies Mass Update from UiPath documentation and forum.

NEW QUESTION 147

What role do Triggers play in the UiPath Integration Service?

- A. Manage connections between UiPath Studio and third-party applications.
- B. Provide a mechanism for starting processes on a scheduled basis from Orchestrator.
- C. Assist in the creation of automation projects by providing event-based activities.
- D. Provide a mechanism for subscribing to specific events from third-party applications, automatically starting processes in Orchestrator.

Answer: D

Explanation:

Triggers are a feature of UiPath Integration Service that allow you to react to key events in third-party systems, such as data updates, insertions, deletions, or custom events. By configuring triggers, you can start your UiPath processes automatically from Orchestrator when these events occur, enabling near real-time automation workflows across different applications. (UiPath Integration Service documentation¹)

References:

? 1: Integration Service - Triggers - UiPath Documentation Portal

NEW QUESTION 148

To retrieve all Outlook emails with the word "UiPath" in the subject, which filtering property and filter schema should a developer use?

- A. Property: FilterByMessageldsSchema: "@SQL=""urn:schemas:httpmail:subject"" like 'UiPath%'"
- B. Property: FilterSchema: "@SQL=""urn:schemas:httpmail:subject"" like '%UiPath%'"
- C. Property: FilterSchema: "@SQL=""urn:schemas:httpmail:subject"" like 'UiPath%'"
- D. Property: FilterByMessageldsSchema: "@SQL=""urn:schemas:httpmail:subject"" like '%UiPath%'"

Answer: B

Explanation:

To retrieve all Outlook emails with the word "UiPath" in the subject, a developer should use the Filter property and the filter schema "@SQL=""urn:schemas:httpmail:subject"" like '%UiPath%'". The Filter property allows developers to specify a DASL query that filters the emails based on various criteria, such as subject, sender, date, etc. The filter schema "@SQL=""urn:schemas:httpmail:subject"" like '%UiPath%'" uses the SQL dialect of DASL to search for emails that have the word "UiPath" anywhere in the subject. The "%" symbol is a wildcard that matches any character or string. (UiPath Automation Developer study guide)

References:

? Get Outlook Mail Messages

? Chapter 11: Searching Outlook Data | Microsoft Learn

NEW QUESTION 149

What is the purpose of credential stores in UiPath Orchestrator?

- A. To store Orchestrator event logs and related data for auditing purposes.
- B. To serve as a centralized location for storing pre-built automation workflows and processes.
- C. To securely store sensitive data such as Robot credentials and Credential Assets for use in automation processes.
- D. To store non-sensitive data and configuration settings for UiPath Studio projects.

Answer: C

Explanation:

Credential stores in UiPath Orchestrator are used to securely store sensitive information like Robot credentials and Credential Assets, which are essential for executing automated processes that require login details or other secure data. Orchestrator supports multiple credential stores at the tenant level and provides built-in support for secure stores such as CyberArk and Azure Key Vault. It also allows for the development of plugins for other secure stores if needed.

(Orchestrator - Credential Stores - UiPath Academy) References:

? Orchestrator - Credential Stores - UiPath Documentation Portal

? Credential Stores - UiPath Orchestrator

NEW QUESTION 150

Which of the following best describes the Alerts panel?

- A. A panel that displays summaries of the alerts you subscribed to, received as error reports every ten minutes, or as daily reports.
- B. A panel that displays a more comprehensive list of all alerts.
- C. A panel that displays alerts as they occur.
- D. A panel that displays the most severe five alerts, accessible from the Alerts bell.

Answer: D

Explanation:

The Alerts panel is a feature of the UiPath Orchestrator that shows the most critical alerts related to robots, queue items, triggers, and more¹. The alerts are displayed in descending order of severity and time². The Alerts panel can be accessed by clicking the Alerts bell icon on the top-right corner of the Orchestrator dashboard³. Clicking an alert in the panel redirects the user to the custom filtered page of the associated component⁴.

NEW QUESTION 151

What status needs to be selected in the Set Transaction Status activity in UiPath Studio so that the respective Queue Item will be retried?

- A. Failed
- B. Retried
- C. Abandoned
- D. Postponed

Answer: A

Explanation:

The Set Transaction Status activity is used to mark the result of a queue item processing¹. If the queue item fails with an application exception, it can be retried by setting its status to Failed². The Retried status is automatically assigned by Orchestrator when a retry is triggered³. The Abandoned status is applied when a queue item remains in progress for too long without being processed⁴. The Postponed status is used to delay the processing of a queue item until a specific date and time.

References:

- ? Managing Queues in Studio documentation, Step 9: Set Transaction Status section
- ? Queue Item Statuses documentation, Retried section
- ? Automation Best Practices documentation, Queue Item Status section
- ? Queue Item Statuses documentation, Abandoned section
- ? Queue Item Statuses documentation, Postponed section

NEW QUESTION 156

Considering a process developed using REFramework, if the status of a transaction was set to "Failed" with the Error Type specified as "Business", the process will transition to which state?

- A. Get Transaction Data
- B. Initialization
- C. End Process
- D. Process Transaction

Answer: A

Explanation:

The REFramework template is a robust and scalable framework for building RPA projects¹. It uses a state machine to handle the different stages of the automation process². One of the states is the Process Transaction state, where the main actions are performed on each transaction item³. A transaction item can be a queue item from Orchestrator, a data row from an Excel file, or any other type of data that needs to be processed⁴. If the status of a transaction item is set to "Failed" with the Error Type specified as "Business", it means that the item did not meet a business or application requirement within the project and was therefore sent to a Set Transaction Status activity, which changed its status to Failed. In this case, the process will transition to the Get Transaction Data state, where the next transaction item is retrieved and assigned to be processed. The process will not transition to the Initialization, End Process, or Process Transaction states, as these are used for different purposes in the REFramework. References:

- ? The UiPath ReFramework documentation from UiPath
- ? State Machines documentation from UiPath
- ? Process.xaml documentation from UiPath
- ? TransactionItem Variable documentation from UiPath
- ? [Queue Item Statuses] documentation from UiPath
- ? [GetTransactionData.xaml] documentation from UiPath

NEW QUESTION 157

DRAG DROP

The provided exhibit displays the representation of the "Deadline" field using the yyyy-mm- dd format.

Queue Item Name	Deadline	Priority
EmployeeID1		Normal
EmployeeID2	2050-01-01	High
EmployeeID3	2050-01-02	High
EmployeeID4	2050-01-01	Normal
EmployeeID5	2050-01-02	Low
EmployeeID6		High
EmployeeID7	2050-01-01	Low
EmployeeID8	2050-01-01	Normal
EmployeeID9		Low

In what order should the Queue Items be processed by a single robot executing a Performer workflow?

Queue Item

EmployeeID1

EmployeeID2

EmployeeID3

EmployeeID4

EmployeeID5

EmployeeID6

EmployeeID7

EmployeeID8

EmployeeID9

Order to be Processed

1st

2nd

3rd

4th

5th

6th

7th

8th

9th

- A. Mastered
- B. Not Mastered

Answer: A

Explanation:

The Queue Items should be processed by a single robot executing a Performer workflow in the following order:

- ? EmployeeID1
- ? EmployeeID4
- ? EmployeeID8
- ? EmployeeID3
- ? EmployeeID6
- ? EmployeeID9
- ? EmployeeID5
- ? EmployeeID2
- ? EmployeeID7

A queue is a container that holds an unlimited number of items that can be processed by a robot1. A queue item can have a deadline and a priority, which affect the order in which the robot retrieves the items from the queue2. The Performer workflow is a part of the REFramework template that processes the queue items using the Get Transaction Item activity3. The order of queue execution is determined by the following rules4:

- ? Items that have a deadline are processed first, in order of priority and according to the set deadline for items with the same priority.
- ? Items that have no deadline are processed next, in order of priority and according to the rule First In, First Out for items with the same priority.
- Based on these rules and the exhibit, the order of queue execution is as follows:
- ? EmployeeID1 has the earliest deadline (2050-01-01) and high priority, so it is processed first.
- ? EmployeeID4 has the same deadline as EmployeeID1, but normal priority, so it is processed second.
- ? EmployeeID8 has the same deadline and priority as EmployeeID4, but it was added later to the queue, so it is processed third.
- ? EmployeeID3 has the next earliest deadline (2050-01-02) and high priority, so it is processed fourth.
- ? EmployeeID6 has the same deadline as EmployeeID3, but normal priority, so it is processed fifth.
- ? EmployeeID9 has the same deadline and priority as EmployeeID6, but it was added later to the queue, so it is processed sixth.
- ? EmployeeID5 has no deadline, but high priority, so it is processed seventh.
- ? EmployeeID2 has no deadline and normal priority, so it is processed eighth.
- ? EmployeeID7 has no deadline and low priority, so it is processed ninth.

References:

- ? About Queues and Transactions documentation from UiPath
- ? Processing Order documentation from UiPath
- ? Performer documentation from UiPath

? Order processing queue forum post from UiPath Community

NEW QUESTION 158

DRAG DROP

What are the steps to publish a project from UiPath Studio?

Instructions: Drag the Description found on the "Left" and drop on the correct Step Sequence found on the "Right".

Description	Step Sequence
Fill in the necessary publishing details, such as the project name, version, and description.	
Click on the "Publish" button to initiate the publishing process.	
In the Design ribbon tab, click on the "Publish" button.	
Choose the desired publishing option, such as Orchestrator, Local, or Custom NuGet feed.	

- A. Mastered
- B. Not Mastered

Answer: A

Explanation:

The steps to publish a project from UiPath Studio are:

? In the Design ribbon tab, click on the "Publish" button. The Publish Project window opens. (UiPath Studio documentation1)

? Fill in the necessary publishing details, such as the project name, version, and description. You can also add release notes and select the environment where the project will run. (UiPath Studio documentation1)

? Choose the desired publishing option, such as Orchestrator, Local, or Custom NuGet feed. Depending on your choice, you may need to provide additional information, such as the Orchestrator URL, the local folder path, or the custom feed URL. (UiPath Studio documentation1)

? Click on the "Publish" button to initiate the publishing process. A confirmation message will appear when the project is successfully published. (UiPath Studio documentation1)

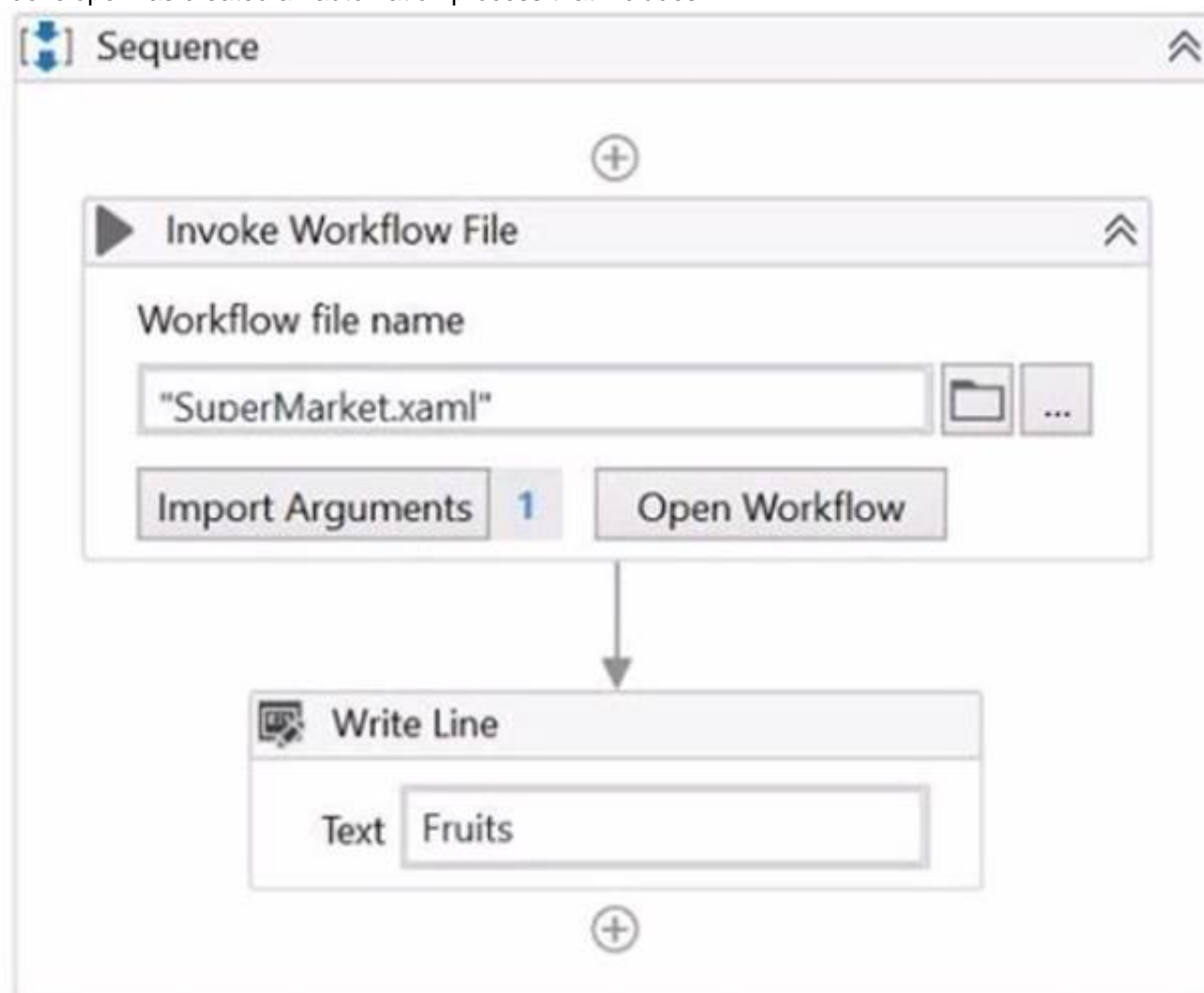
Short Explanation: Publishing a project from UiPath Studio means creating a package that contains all the files and dependencies required to run the automation process. The package can be deployed to different locations, such as Orchestrator, a local machine, or a custom NuGet feed. Publishing a project from UiPath Studio involves four main steps: clicking on the Publish button, filling in the publishing details, choosing the publishing option, and confirming the publishing process. (UiPath Automation Developer study guide2) References:

? 1: Publishing Projects from Studio - UiPath Studio.

? 2: UiPath Certified Automation Developer - Learning Plan.

NEW QUESTION 162

A developer has created an automation process that includes:



2. Variables in the Variable panel in the Main.xaml file:

Name	Variable type	Scope	Default
Fruits	String	Sequence	"Apple"
Create Variable			

3. Main.xaml file invokes the SuperMarket workflow using the following argument:

Invoked workflow's arguments			
Name	Direction	Type	Value
out_ShoppingBasket	Out	String	Fruits
Create Argument			
OK Cancel			

4. Detailed SuperMarket sequence and right-hand side expression shown below:

SuperMarket

A+B Assign - Inside SuperMarket Sequence

out_ShoppingBasket = out_ShoppingBasket

Expression Editor

Value (InArgument)

1 out_ShoppingBasket + ", Orange"

OK Cancel

Based on the information shown in the exhibits, what is the output of the Write Line activity in the Main xaml file?

- A. Apple
- B. Orange
- C. Apple Orange
- D. Orange Apple

Answer: B

Explanation:

The Write Line activity is used to write a specified text to the Output panel. The text can be a string literal, a variable, or an expression. In this case, the Write Line activity in the Main xaml file has the text "out_ShoppingBasket + ", "Orange"". The out_ShoppingBasket is a variable of type String, which is declared in the Main xaml file and has the default value of "Apple". The variable is passed as an argument to the SuperMarket xaml file, where it is assigned a new value of "Orange". The argument direction is Out, which means that the value of the argument is passed back to the Main xaml file after the execution of the SuperMarket xaml file. Therefore, the value of the out_ShoppingBasket variable in the Main xaml file is changed from "Apple" to "Orange". The expression "out_ShoppingBasket + ", "Orange"" concatenates the value of the out_ShoppingBasket variable with a comma and a space, followed by the string literal "Orange". The result of this expression is "Orange, Orange". The Write Line activity writes this text to the Output panel. Therefore, the answer is B. Orange. References: Write Line, Variables, Arguments

NEW QUESTION 167

How does UiPath handle different dependency versions for multiple running processes that run at the same time?

- A. Each running process uses its own required version of the dependency.
- B. Running processes use the earliest compatible dependency version.
- C. Each running process automatically adapts to the available dependency version.
- D. All running processes use the latest version of the dependency available.

Answer: A

Explanation:

UiPath handles different dependency versions for multiple running processes that run at the same time by using a feature called Dependency Isolation. This feature ensures that each running process can use the specific version of the dependency that it needs, without affecting or being affected by other processes. This way, UiPath avoids conflicts and errors caused by incompatible or missing dependency versions. (UiPath Automation Developer study guide)

References:

? Dependency Isolation

? Managing Dependencies

NEW QUESTION 171

A project built using REFramework pulls phone numbers from a database of employees and creates queue items for each one. Following processing, these elements must be added to a financing application. The queue item holding a phone number becomes invalid if a digit is accidentally left out because of a human mistake. As a requirement, queue items that contain partial numbers should not be accepted.

What type of error should be thrown according to best practices?

- A. Business Exception
- B. Fatal Exception
- C. Application Exception
- D. System Exception

Answer: A

Explanation:

A business exception is an exception that occurs due to a fault in the business process logic or data, such as invalid input, incorrect format, missing information, etc. Business exceptions are usually predictable and can be handled gracefully by logging the error and moving to the next transaction. In this case, a queue item that contains a partial phone number is an example of a business exception, as it is caused by a human mistake and does not affect the functionality of the application or system. (UiPath Automation Developer study guide)

References:

? Business Exception vs System Exception

? Exception Handling

NEW QUESTION 175

What are the primary functions of the UiPath Integration Service?

- A. Automates UI design, manages API connections, provides limited activities and events, simplifies automation design.
- B. Enables automation with API integration, manages connections with user-provided authentication, kicks off automations based on application-specific triggers, simplifies automation design with the help of third-party libraries.
- C. Enables automation with a library of connectors, manages connections easily with standardized authentication, kicks off automations with server-side triggers or events, provides curated activities and events, simplifies automation design.
- D. Enables automation with UI components, manages API keys, kicks off automations with client-side triggers, provides curated events.

Answer: C

Explanation:

UiPath Integration Service is a new feature that allows developers to create and manage integrations with various applications and systems using UI and API automation. It offers a library of connectors that simplify the authentication and connection process, as well as activities and events that enable data exchange and automation triggering. It also supports server-side triggers that can start automations based on events from other systems. (UiPath Automation Developer study guide)

References:

? Introducing UiPath Integration Service

? UiPath Integration Service

NEW QUESTION 179

A developer has created a string array variable as shown below: UserNames = {"Jane", "Jack", "Jill", "John"}

Which expression should the developer use in a Log Message activity to print the elements of the array separated by the string ", "?

- A. String.Join(UserNames, ",")
- B. String.Join(", ", UserNames)
- C. String.Concat(UserNames, ",")
- D. String.Concat(", ", UserNames)

Answer: B

Explanation:

The String.Join method takes two parameters: a separator and an array of strings. It returns a new string that concatenates the elements of the array using the separator. The correct syntax is String.Join(separator, array). Therefore, option B is the correct answer. References:

? Automation Developer Associate Training course, Section 1: Data Manipulation,

Lecture: Data Manipulation with Strings in Studio

? How to use Array of string forum post, Answer by @balupad14

NEW QUESTION 183

What variable type should the developer use to store the monetary amount read from a single cell in an Excel file, before inputting it into a field in a web application for the automation process?

- A. List
- B. Double
- C. DataRow
- D. Object

Answer: B

Explanation:

The variable type that the developer should use to store the monetary amount read from a single cell in an Excel file, before inputting it into a field in a web application for the automation process, is Double. This is because the Double variable type can store decimal numbers with high precision and a large range of values. This is suitable for storing monetary amounts that may have fractions or large digits. The Double variable type can be used with the Read Cell activity to read the value from the Excel file, and with the Type Into activity to input the value into the web application. The developer can also use the Format Value activity to format the Double variable as a currency, if needed.

- References:
- ? Types of Variables - UiPath Studio
 - ? Read Cell - UiPath Activities
 - ? Type Into - UiPath Activities
 - ? Format Value - UiPath Activities

NEW QUESTION 185

Which argument name follows UiPath best practices for argument naming conventions?

- A. ioUpdatedsum
- B. in_argument1
- C. dt_outputrovvs
- D. out_ConfirmationNumber

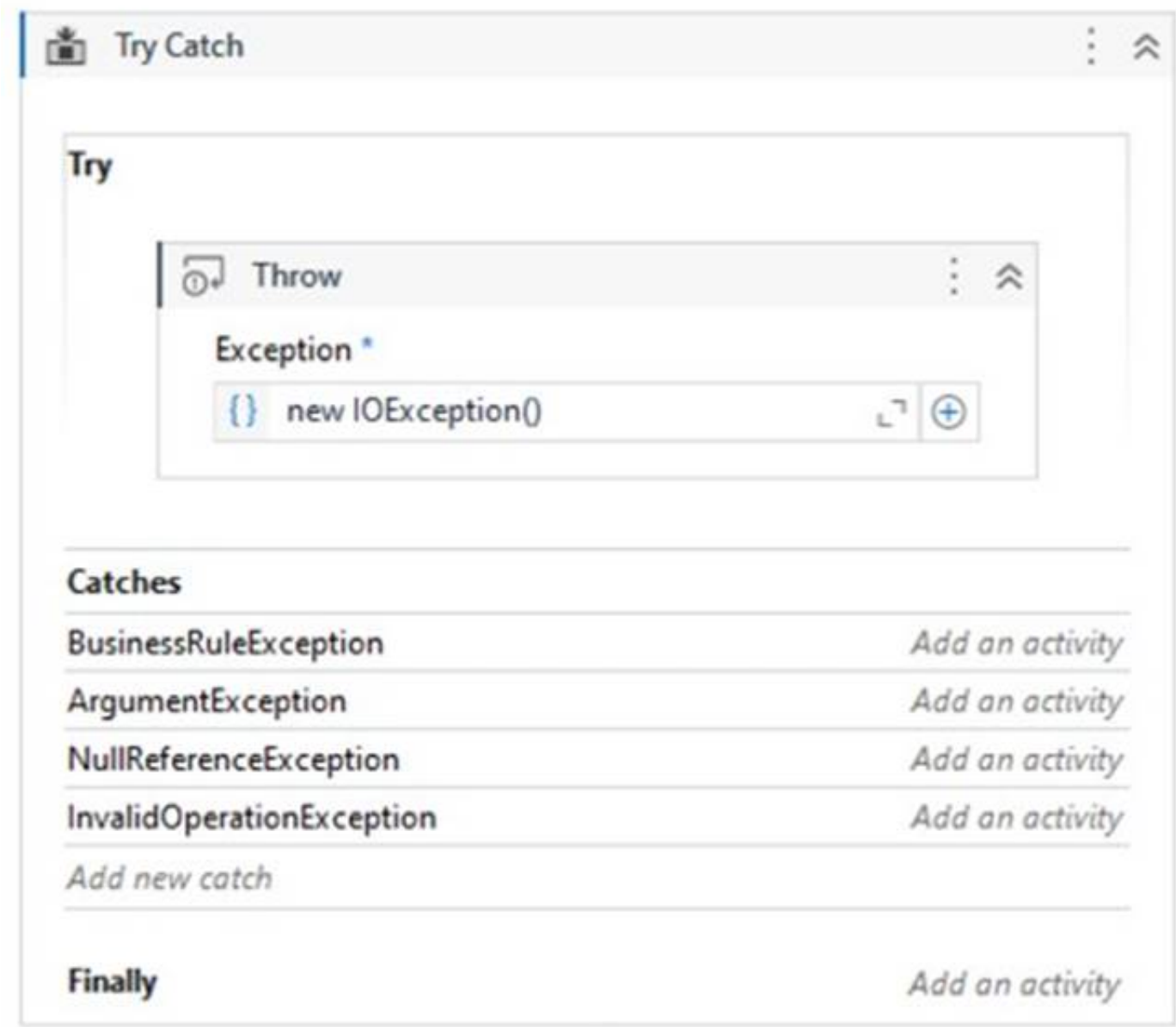
Answer: D

Explanation:

The argument name that follows UiPath best practices for argument naming conventions is out_ConfirmationNumber. According to the UiPath best practices, the argument name should be meaningful and include an indication of its type and direction. The type can be inferred from the argument's data type, such as String, Int32, DataTable, etc. The direction can be one of the following: in, out, or io. The in direction means that the argument can only be used within the given project. The out direction means that the argument can be used to pass data outside of a given project. The io direction means that the argument can be used both within and outside of a given project4. The argument name should also follow the camel case convention, which specifies that each word in the middle of the argument name begins with a capital letter, with no intervening spaces or punctuation5. For example, the argument name out_ConfirmationNumber follows these best practices, as it indicates that the argument is of out direction, and that it stores a confirmation number value. The other argument names do not follow the best practices, as they either use incorrect or inconsistent prefixes, or do not use camel case convention. References: ST-NMG-002 - Arguments Naming Convention and Variables, arguments and workflows naming - best practice from UiPath documentation and forum.

NEW QUESTION 190

Consider the following Try Catch statement:



What will happen when the code is executed?

- A. The exception will be handled in the ArgumentException catch.
- B. There is no catch defined for the thrown exception type.
- C. The exception will be handled in the InvalidOperationException catch.
- D. The exception will be handled in the BusinessException catch.

Answer: B

Explanation:

This is because the code is throwing a new IOException, but there is no catch block defined for IOException. The catch blocks present are for BusinessException, ArgumentException, and InvalidOperationException. Therefore, the code will not be able to handle the thrown exception. References: <https://docs.uipath.com/activities/docs/try-catch>

NEW QUESTION 193

A developer invoked a workflow file with three arguments, one "In": one "Out", and one "In/Out". In the Invoked Workflow's Arguments window, how can the Value be configured for each argument?

- A. In: Variable or Hard-coded value Out: Variable only In/Out: Variable only
- B. In: Variable only Out: Variable only In/Out: Variable only
- C. In: Variable or Hard-coded value Out: Variable or Hard-coded value In/Out: Hard-coded value only
- D. In: Variable or Hard-coded value Out: Hard-coded value only In/Out: Variable only

Answer: A

Explanation:

In the Invoked Workflow's Arguments window, the Value can be configured for each argument as follows:

? In: Variable or Hard-coded value. An In argument is an argument that passes a value from the parent workflow to the child workflow. The Value of an In argument can be configured with a variable that holds the value to be passed, or a hard-coded value that is directly entered in the Value field³. For example, if the In argument is Name and the value to be passed is "John", the Value can be configured with a variable that contains "John", such as strName, or a hard-coded value, such as "John".

? Out: Variable only. An Out argument is an argument that passes a value from the child workflow to the parent workflow. The Value of an Out argument can be configured only with a variable that receives the value from the child workflow⁴. For example, if the Out argument is Result and the value to be passed is the sum of two numbers, the Value can be configured only with a variable that stores the sum, such as intResult.

? In/Out: Variable only. An In/Out argument is an argument that passes a value from the parent workflow to the child workflow, and then passes the modified value back to the parent workflow. The Value of an In/Out argument can be configured only with a variable that holds the initial value and receives the modified value⁵. For example, if the In/Out argument is Counter and the value to be passed is a number that is incremented by one in the child workflow, the Value can be configured only with a variable that contains the initial number and stores the incremented number, such as intCounter.

References: Using Arguments and Arguments from UiPath documentation.

NEW QUESTION 194

A developer wants to create a process using a Flow Switch activity. What is a feature of this activity?

- A. Supports up to three expressions by default
- B. Two Default cases can be defined
- C. Default case is executed before the expression is evaluated
- D. Default case is executed if no cases match the expression

Answer: D

Explanation:

The Flow Switch activity is a conditional node that provides branching for the flow of control based on a match criterion when more than two alternative branches are required. The Flow Switch activity has an Expression property that can be of any type, and a dictionary of Cases that consists of pairs of keys and activities. The Flow Switch activity evaluates the Expression and compares it against each of the keys in the Cases. If a match is found, the corresponding activity is executed. If no match is found, the Default case is executed, if it is defined. The Default case is an optional activity that serves as a fallback option when none of the cases match the expression. Therefore, the answer is D. Default case is executed if no cases match the expression. References: Flow Switch, About Control Flow

NEW QUESTION 195

Which Scraping method should be used for the Get Text activity to capture hidden text from an application?

- A. Text attribute
- B. Default
- C. Native
- D. Full text

Answer: D

Explanation:

The Get Text activity is used to extract the text value of a specified UI element. It does not use any of the scraping methods by default, but it can be configured to use the Full Text method in the Properties panel. The Full Text method is able to capture hidden text from an application, as well as the entire visible text and editable text. The Full Text method uses an internal OCR engine that works with most applications and languages.

References:

? Get Text activity documentation from UiPath

? Screen Scraping Methods documentation from UiPath

? Text scrapping forum post from UiPath Community

? How to: Scrape the Whole Text, Including Hidden Elements from a Terminal Window article from UiPath Knowledge Base

NEW QUESTION 196

A developer configured the properties for a Click activity on an element inside a web page as shown in the following exhibit.

Properties

UiPath.UIAutomationNext.Activities.NClick

Common

Continue on error: Continue executing the activities in the automat ☒ ...

Delay after: Delay (in seconds) after this activity is completed, be ...

Delay before: Delay (in seconds) to wait before executing this activ ...

DisplayName: Click

Timeout: The amount of time (in seconds) to wait for the ...

Input

Click type: NClickType.Single

Cursor motion type: Specifies the type of motion performed by the m

Mouse button: NMouseButton.Left

Target

Click offset: (null)

Fuzzy selector: "<webctrl aria-role='button' type='submit' tag='IN ...

Native text: Enter a VB expression

Responsive websites: ☐

Strict selector: "<webctrl aria-role='button' css-selector='body&g ...

Targeting methods: Strict selector

Visibility check: Interactive (for Fuzzy Selector)

Wait for page load: NWaitForReady.Interactive

Window selector (Application instance): "<html app='msedge.exe' title='*' />"

Verify execution: (null)

Input/Output Element

Input element: The Input UI Element defines the screen element tha ...

Output element: Output a UI Element to use in other activities as an ...

Misc

Private: ☐

Options

Alter disabled element: When selected, the activity executes the action e ☒ ...

Input mode: Same as App/Browser

Key modifiers: NKeyModifiers.None

An animation on the web page never completely loads but the element indicated in the Click activity does load within the specified timeout duration. What occurs when this Click activity executes?

- A. Element is clicked once the element is fully loaded.
- B. Timeout error occurs without clicking on the element.
- C. Waits 10 seconds before clicking on the element.
- D. Continues to the next activity after 30 seconds without clicking on the element.

Answer: A

Explanation:

The Click activity is used to simulate a mouse click on a specified UI element, such as a button or a link¹. It has several properties that can be configured to customize its behavior, such as the input method, the click type, the timeout, and the wait for ready¹.

? The input method determines how the click is performed. It can be Default, Simulate, or Window Messages. The Default method uses the hardware driver to simulate the click, and it requires the target element to be visible and in focus. The Simulate and Window Messages methods use the technology of the target application to inject the click, and they can work in the background, even if the target element is hidden or minimized².

? The click type determines which mouse button is used for the click. It can be Single, Double, Down, or Up. The Single and Double types perform a single or double click using the left mouse button. The Down and Up types perform a press or release action using any mouse button¹.

? The timeout determines how long the activity waits for the target element to appear before throwing an error. It is measured in milliseconds, and it has a default value of 30000 (30 seconds). If the timeout is exceeded, the activity fails with a TimeoutException¹.

? The wait for ready determines when the activity executes. It can be None, Interactive, or Complete. The None option executes the activity immediately. The Interactive option executes the activity after the target element is loaded. The Complete option executes the activity after the target application is loaded¹.

In your case, you have configured the properties for the Click activity as follows:

? Input method: Simulate

? Click type: Single

? Timeout: 30000

? Wait for ready: Complete

This means that the Click activity will use the Simulate method to perform a single click on the target element in the background, after waiting for 30 seconds or until the target application is fully loaded, whichever comes first.

Since you have mentioned that an animation on the web page never completely loads but the element indicated in the Click activity does load within the specified timeout duration, what occurs when this Click activity executes is:

Element is clicked once the element is fully loaded.

This is because the Simulate method can work in the background, even if the web page is hidden or minimized, and it does not depend on the animation to complete. The Complete option for wait for ready ensures that the Click activity waits until the target element is loaded before clicking on it. The timeout value of 30000 does not affect this scenario, because it is not exceeded.

Therefore, option A is correct.

References:

? Click - UiPath Documentation Portal.

? What are different Input methods in UiPath - UiPath Community Forum.

NEW QUESTION 198

.....

Relate Links

100% Pass Your UiPath-ADAv1 Exam with Exambible Prep Materials

<https://www.exambible.com/UiPath-ADAv1-exam/>

Contact us

We are proud of our high-quality customer service, which serves you around the clock 24/7.

Viste - <https://www.exambible.com/>