

200-901 Dumps

Developing Applications and Automating Workflows using Cisco Core Platforms (DEVASC)

<https://www.certleader.com/200-901-dumps.html>



NEW QUESTION 1

Drag and drop the network automation interfaces from the left onto the transport protocols that they support on the right. (Not all Options are used)

400	Unauthorized
401	Not Found
403	Bad Request
404	Forbidden

- A. Mastered
B. Not Mastered

Answer: A

Explanation:

Grpc == http/2 , netconfig == ssh , restconfig == https

NEW QUESTION 2

Refer to the exhibit.

DELETE	Create
GET	Read
PATCH	Update
POST	Update
PUT	Delete

A REST API return this JSON output for a GET HTTP request, Which has assigned to a variable called “vegetables” Using python, which output is the result of this command?

DELETE	POST
GET	GET
PATCH	PATCH
POST	PUT
PUT	DELETE

- A. Lettuce
B. Kiwi
C. ['kiwi', 'grape']
D. {'color': 'green', 'items': ['kiwi', 'grape']}

Answer: B

NEW QUESTION 3

Which two use cases are supported by Meraki APIs? (Choose two.)

- A. Retrieve live streams from a Meraki Camera.
- B. Build a custom Captive Portal for Mobile Apps.
- C. Configure network devices via the Dashboard API.
- D. Build location-aware apps from Wi-Fi and LoRaWAN devices.
- E. Deploy applications onto the devices.

Answer: BC

NEW QUESTION 4

Refer to the exhibit.



```
curl -X [redacted] -H "[redacted]: application/json" \
-H "[redacted]: Bearer AbCdEf123456" https://localhost/api/myresource
```

Which two statements describe the configuration of the Ansible script is run? (Choose two.)

- A. Traffic on port 0/2 and 0/3 is connected to port 0/6.
- B. Traffic from ports 0/2 to 0/5 can flow on port 0/1 due to the trunk.
- C. Traffic can flow between ports 0/2 to 0/5 due to the trunk on port 0/1.
- D. GigabitEthernet0/2 and GigabitEthernet0/3 are access ports for VLAN 6.
- E. GiabitEthernet0/1 is left unconfigured.

Answer: BD

NEW QUESTION 5

Which product provides network controller-level management features?

- A. Cisco DNA Center
- B. Cisco NX-OS
- C. Cisco UCS Manager
- D. Cisco ISE

Answer: A

NEW QUESTION 6

Which way should be used to safely store the API keys?

- A. In an environment variable unique to the system database
- B. Encrypted in a configuration file that is separate from the code
- C. Encrypted in the code in a function
- D. Plain text in the code as a constant

Answer: B

NEW QUESTION 7

When a Cisco IOS XE networking device is configured using RESTCONF, what is the default data-encoding method?

- A. XML
- B. x-form-encoding
- C. YANG
- D. YAML

Answer: A

NEW QUESTION 8

Refer to the exhibit.

A. [{
 "books": {
 "science": {
 "biology": "10.00",
 "geology": "9.00",
 "chemistry": "8.00"
 },
 "math": {
 "calculus": "20.00",
 "algebra": "12.00"
 }
 }
}]

B. {
 "books": [
 "science": {
 "biology": "10.00",
 "geology": "9.00",
 "chemistry": "8.00"
 },
 "math": {
 "calculus": "20.00",
 "algebra": "12.00"
 }
]
}

Which python data structure does my_josn contain?

- A. List
- B. Json
- C. Map
- D. Dict

Answer: D

NEW QUESTION 9

Refer to the exhibit.

URL: https://<ASA_IP>/api/access/global/rules

Method: POST

Payload:

```
{
  "destinationAddress": {
    "kind": "IPv4Address",
    "value": "10.1.1.1"
  },
  "remarks": [ ],
  "active": true,
  "permit": true,
  "sourceAddress": {
    "kind": "IPv4Address",
    "value": "192.168.1.1"
  }
}
```

Response Status Code: 400 Bad Request

Messages: [{"level": "Error", "code": "JSON-PARSE-ERROR", "details": "Unexpected character ('\"' (code 34)):"}

What caused the error in this API request?

- A. The API resource does not support the POST operation
- B. The API resource does not support JSON format payloads.

- C. The submitted JSON payload includes a field that is not supported by the API resource.
D. The submitted JSON payload has a formatting issue

Answer: D

NEW QUESTION 10

Which platform has an API that be used to obtain a list of vulnerable software on user devices?

- A. Cisco Umbrella
B. Cisco Firepower
C. Cisco Identity Services Engine
D. Cisco Advanced Malware Protection

Answer: D

NEW QUESTION 10

When using the Bash shell, how it the output of the devnet command saved to a file named “output.txt”?

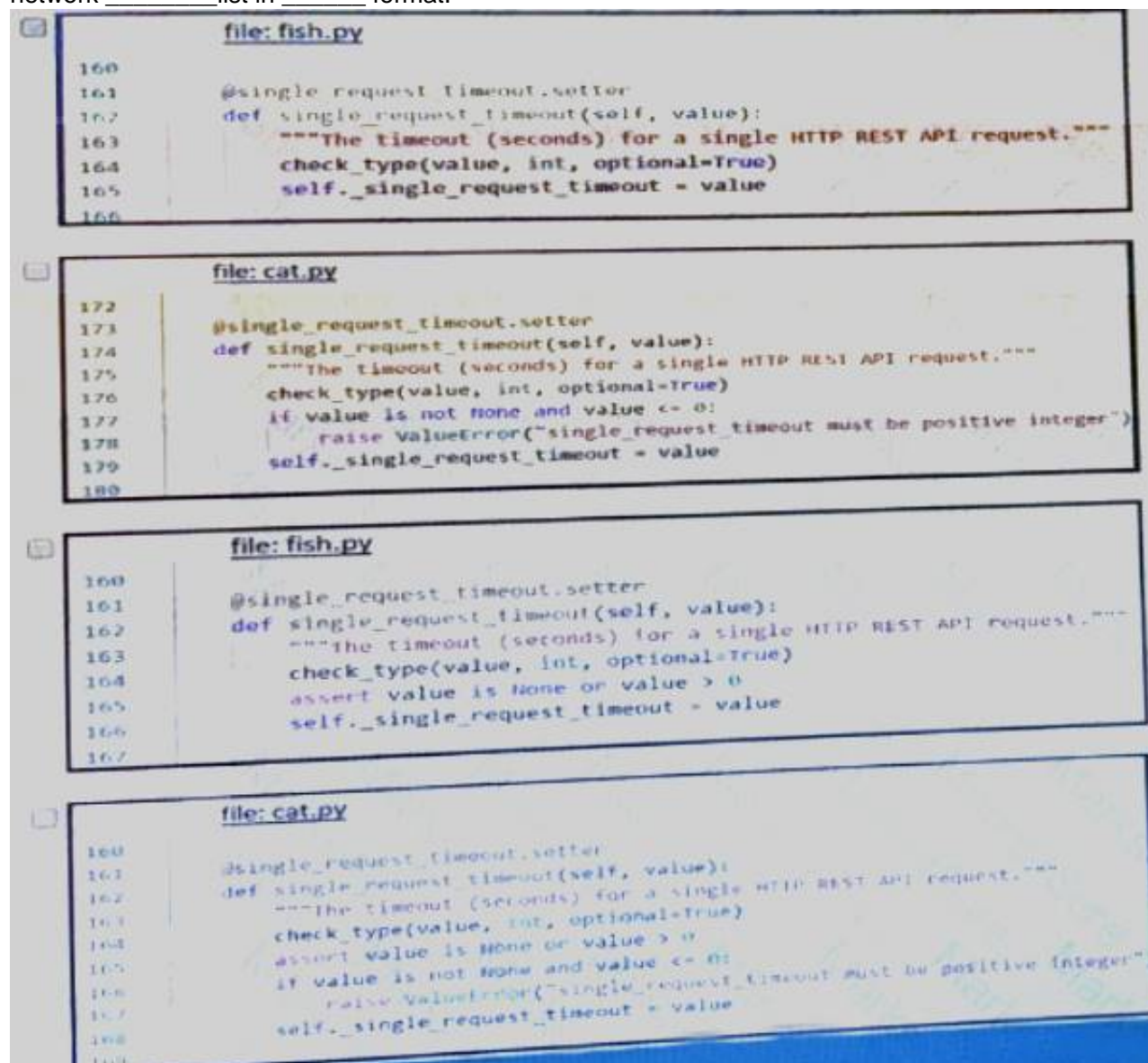
- A. devnet & output.txt
B. devnet > output.txt
C. devnet < output.txt
D. devnet | output.txt

Answer: B

NEW QUESTION 12

Fill in the blanks to complete the statement.

Cisco DNA provide the capability to send an HTTP _____ request to the API endpoint https://DNA-c_API_ADDRESS/api/vi/network-device/ and receive the network _____ list in _____ format.



- A. Mastered
B. Not Mastered

Answer: A

Explanation:

Solution below as

Refer to the exhibit. The output of a unified diff when comparing two versions of a Python script is shown. Which two "single_request_timeout()" functions are defined in fish.py and cat.py, where the left column indicates the line numbers of the fish.py and cat.py code listings? (Choose two.)

Line File: cat.py

```

173 @single_request_timeout.setter
174 def single_request_timeout(self, value):
175     #The timeout (seconds) for a single HTTP REST API request.
176     check_type(value, int, optional=True)
177     if value is not None and value <= 0:
178         raise ValueError("timeout value must be positive int")
179     self.single_request_timeout = value
180
        
```

A

Line File: cat.py

```

161 @single_request_timeout.setter
162 def single_request_timeout(self, value):
163     #The timeout (seconds) for a single HTTP REST API request.
164     check_type(value, int, optional=True)
165     if value is not None and value <= 0:
166         raise ValueError("timeout value must be positive int")
167     self.single_request_timeout = value
        
```

B

Line File: fish.py

```

161 @single_request_timeout.setter
162 def single_request_timeout(self, value):
163     #The timeout (seconds) for a single HTTP REST API request.
164     check_type(value, int, optional=True)
165     self.single_request_timeout = value
166
        
```

C

NEW QUESTION 13

Refer to the exhibit.

Line File: fish.png

```

60
61 @single_request_timeout.setter
62 def single_request_timeout(self, value):
63     #The timeout (seconds) for a single HTTP REST API request.
64     check_type(value, int, optional=True)
65     assert value is None or value > 0
66     self.single_request_timeout = value
67
        
```

D

Line File: cat.py

```

161 @single_request_timeout.setter
162 def single_request_timeout(self, value):
163     #The timeout (seconds) for a single HTTP REST API request.
164     check_type(value, int, optional=True)
165     assert value is None or value > 0
166     if value is not None and value <= 0:
167         raise ValueError("timeout value must be positive int")
168     self.single_request_timeout = value
169
        
```

E

What is the effect of this Ansible playbook on an IOS router?

- A. A new running configuration is pushed to the IOS router.
- B. The current running configuration of the IOS router is backed up.
- C. The start-up configuration of the IOS router is copied to a local folder.
- D. A new start-up configuration is copied to the IOS router.

Answer: B

NEW QUESTION 16

Which CI/CD tool is an automation tool used to build, test, and deploy software?

- A. Nagios
- B. Gradle
- C. Jenkins
- D. Git

Answer: C

NEW QUESTION 21

A function my_func() returns True when it executes normally. Which python snippet tests my_func()?

For CLI commands that support XML, the clid() method returns JSON output. An exception is thrown when XML is not used. Executes CLI commands. Takes CLI command string and returns show command output in a JSON form.

“

Note: The “clid” API can be useful when searching the output of show commands using JSON tools as shown in the example.

PYTHON

```
Example:
>>> import json
>>> from cli import *
>>> jversion = json.loads(clid("show
version"))
>>> jversion[bios_ver_str']
'08.06'
```

Arguments:

- cmd: Single CLI command or a batch of CLI commands. Delimiter for multiple CLI commands is a space followed by a semicolon. Configuration commands must be in a fully qualified form.

Returns:

- string: JSON-formatted output of show commands.

- A. Option A
- B. Option B
- C. Option C
- D. Option D

Answer: B

NEW QUESTION 26

Which status code is used by a REST API to indicate that the submitted payload is incorrect?

- A. A.-400
- B. 403
- C. 405
- D. 429

Answer: A

NEW QUESTION 28

Refer to the exhibit.

```
>>> from cli import *
>>> import json

>>>
>>> cli('configure terminal ; interface loopback 5 ; no shut')
''
>>> intflist=json.loads(clid('show interface brief'))
>>> i=0
>>> while i < len (intflist['TABLE_interface']['ROW_interface']):
...     intf=intflist['TABLE_interface']['ROW_interface'][i]
...     i=i+1
...     if intf['state'] == 'up':
...         print intf['interface']
```

What caused the error in this API request?

- A. The API resource does not support the POST operation.

- B. The API resource does not support JSON format payloads.
- C. The submitted JSON payload includes a field that is not supported by the API resources.
- D. The submitted JSON payload has a formatting issue.

Answer: D

NEW QUESTION 32

Which two statements are true about Cisco UCS manager, Cisco Intersight APIs? (Choose two.)

- A. Cisco Intersight API interactions can be encoded in XML or JSON and require an APIs key in the HTTP header for authentication.
- B. USC Director API interactions can be XML- or JSON-encoded and require an APLs key in the HTTP header for authentication.
- C. UCS manager API interactions are XML-encoded and require a cookie in the method for authentication.
- D. Cisco Intersight uses XML to encoded API interactions and requires an API key pair for authentication.
- E. UCS manager uses JSON to encode API interactions and utilizes Base64-encoded credentials in the HTTP header for authentication.

Answer: BC

NEW QUESTION 37

Which two types of NAT are used in a network? (Choose two.)

- A. Static NAT
- B. Normal NAT
- C. Multicast NAT
- D. Dynamic NAT
- E. Router NAT

Answer: AD

NEW QUESTION 39

Which PAI is used to obtain data voicemail ports?

- A. Finesse gadgets
- B. Cisco Unified Communications manager
- C. Webex devices
- D. Webex teams

Answer: B

NEW QUESTION 43

Refer to the exhibit.

List Rooms

List rooms.

The `title` of the room for 1:1 rooms will be the display name of the other person.

By default, lists rooms to which the authenticated user belongs.

Long result sets will be split into [pages](#).

GET `/v1/rooms`

Query Parameters

Name	Description
<code>teamId</code> string	List rooms associated with a team, by ID.
<code>type</code> string	List rooms by tape. <i>Possible values: direct, group</i>
<code>sortBy</code> string	Sort results. <i>Possible values: id, lastactivity, created</i>
<code>max</code> number	Limit the maximum number of rooms in the response. Default: <code>100</code>

Given the API documentation for the UCS SDK python class, UcsHandle, which code snippet creates a handle instance?

HTTP GET `/v1/rooms` | `UcsHandle()`

- A. Option A
- B. Option B
- C. Option C
- D. Option D

Answer: B

NEW QUESTION 44

What should a CI/CD pipeline aim to achieve?

- A. to allow manual testing before deployment
- B. to require minimal manual interaction
- C. to support new deployments on a fixed monthly schedule
- D. to provide a documented process for feedback

Answer: A

NEW QUESTION 48

Which two statement describe the role of an artifact repository in a CI/CD pipeline? (Choose two.)

- A. An artifact repository allows to compare and merge changes in the source code of files involved in a build process.
- B. An artifact repository is needed only for CI/CD pipeline executed on a public cloud infrastructure.
- C. An artifact repository provides traceability, search, and management of binary files.
- D. An artifact repository is needed only for managing open source software.
- E. An artifact repository stores files needed and generated during the build process.

Answer: CE

NEW QUESTION 53

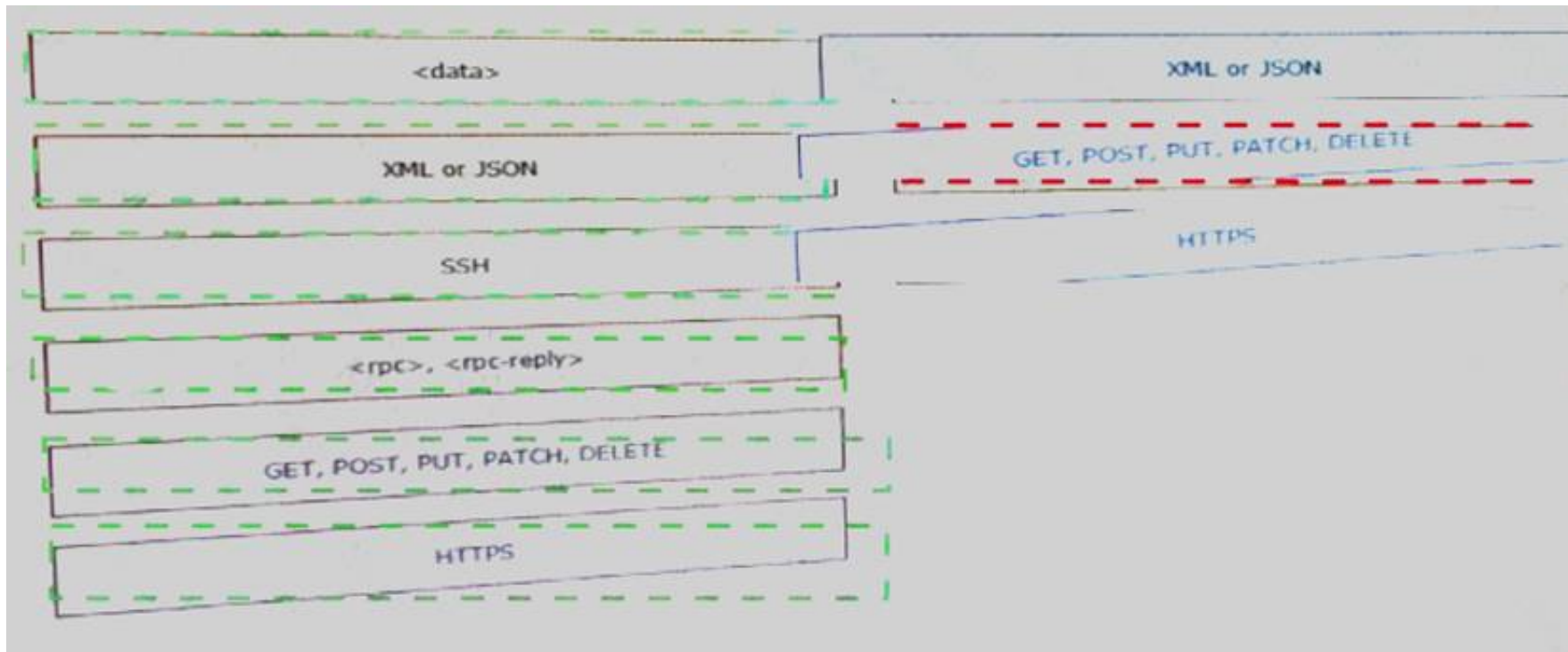
What are two characteristics of Bare Metal environments that are related to application deployment? (Choose two.)

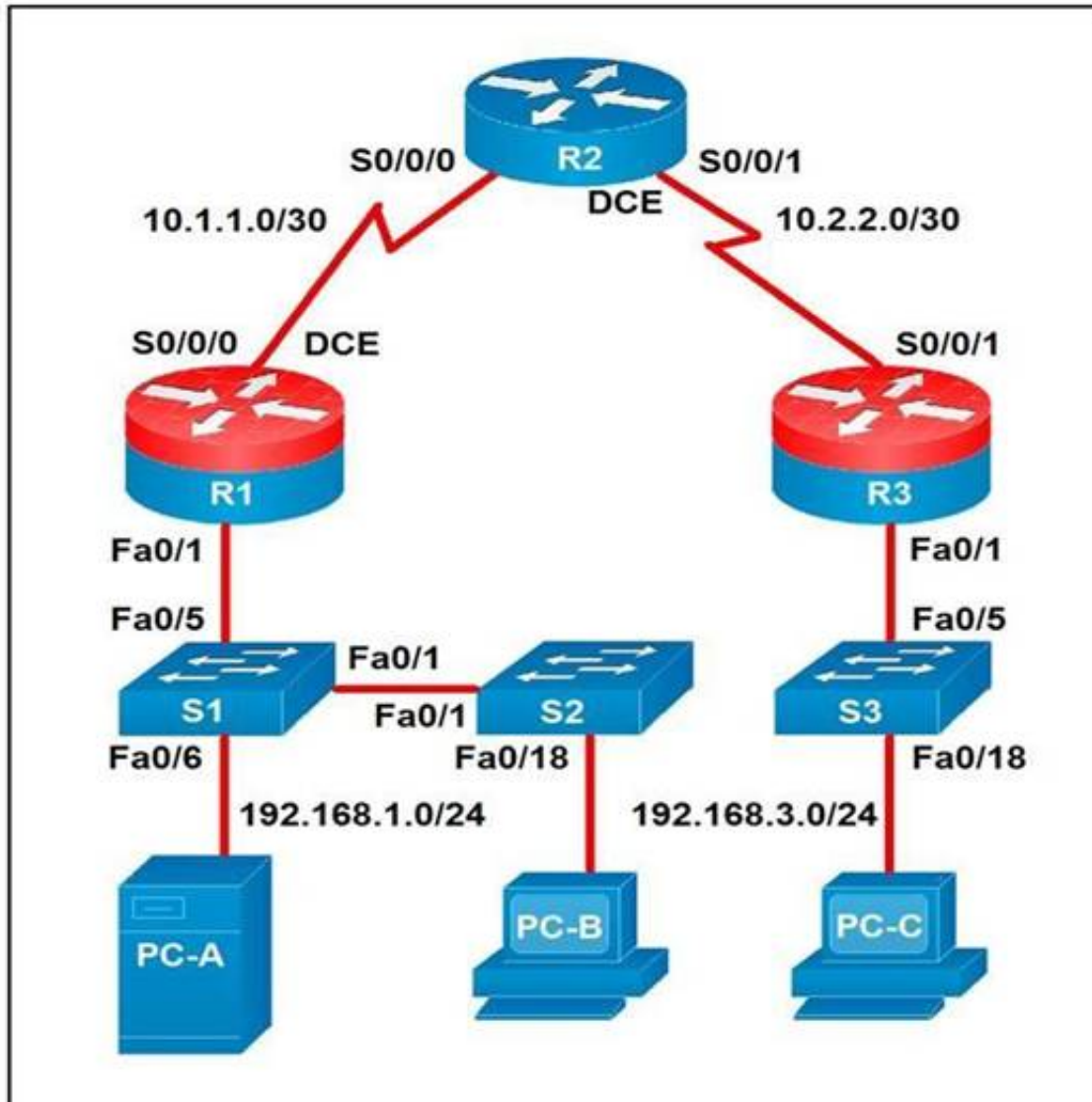
- A. Provide the hypervisor to host virtual servers
- B. Specifically designed for container-based workloads.
- C. Provides workloads with access to hardware features
- D. Suitable for legacy application that do not support virtualization
- E. Not compatible with other cloud services such as PaaS or SaaS offerings.

Answer: CD

NEW QUESTION 58

Refer to the exhibit.





A developer is troubleshooting an API with the given API with the given API documentation and cURL command. What is the cause of this problem?

- A. The user is not allowed to post messages from their account
- B. The request body is missing or incomplete
- C. The API token specified is expired
- D. The authorization header is missing or incomplete

Answer: C

NEW QUESTION 61

An application calls a REST API and expects a result set of more than 550 records, but each time the call is made, only 25 are returned. Which feature limits the amount of data that is returned by the API?

- A. pagination
- B. payload limit
- C. rate limiting
- D. service timeouts

Answer: A

NEW QUESTION 65

Refer to the exhibit.

ports are different broadcast domain by default	Firewall
ports can be in the same broadcast domain	Load Balancer
uses traffic inspection to make routing decisions	Router
blocks networks traffic by default	Switch

An administrator attempts to perform a GET using the Cisco IOS XE RESTCONF API to return the hostname of a device. The sequence diagram illustrated the HTTP message observed. Which change to the API request resolves the issue?

- A. Add Content-Type HTTP header with 'application/yang-data+json' using -H 'Content-Type: application/yang-data+json'.
- B. Use -u cisco: cisco instead of -u 'cisco: cisco'.
- C. Change the request method from -X "GET" to- X' POST".
- D. Remove the -H 'Accept: application/yang-data+json' HTTP header because it is not required.

Answer: B

NEW QUESTION 69

Which task is performed because the test-driven development approach is being used?

- A. testing existing software before developing new code
- B. refactoring code that is covered by existing tests
- C. writing code without committing any coding violations
- D. creating test scenarios based on continuous development

Answer: B

NEW QUESTION 73

Which Cisco DevNet resource allows access to products in a development lab to explore, learn, and build application that use Cisco APLs?

- A. DevNet communities
- B. DevNet code Exchange
- C. DevNet Automation Exchange
- D. DevNet sandbox

Answer: D

NEW QUESTION 75

Which device is a system that monitors and controls incoming and outgoing network traffic based on predetermined security rules?

- A. Switch
- B. Router
- C. Firewall
- D. Load balancer

Answer: C

NEW QUESTION 77

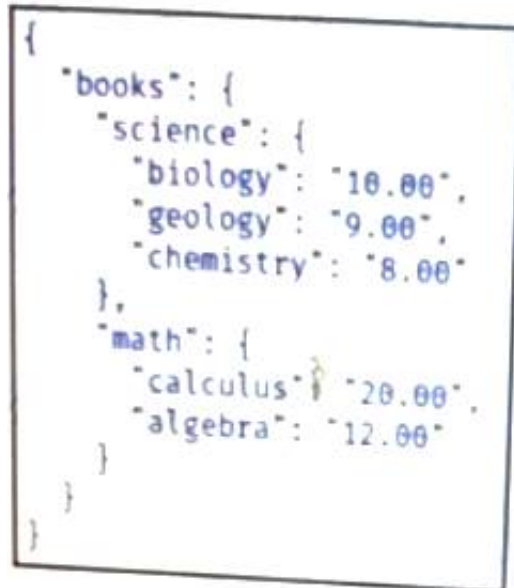
Which action does the Git command git merge allow the development to perform?

- A. Combine multiple sequence of commits into one unified history.
- B. Push changes to the remote repository
- C. Switch between branches
- D. Create, list, rename, and delete branches

Answer: A

NEW QUESTION 78

Drag and drop the descriptions from the left onto correct application deployment models on the right.



- A. Mastered
- B. Not Mastered

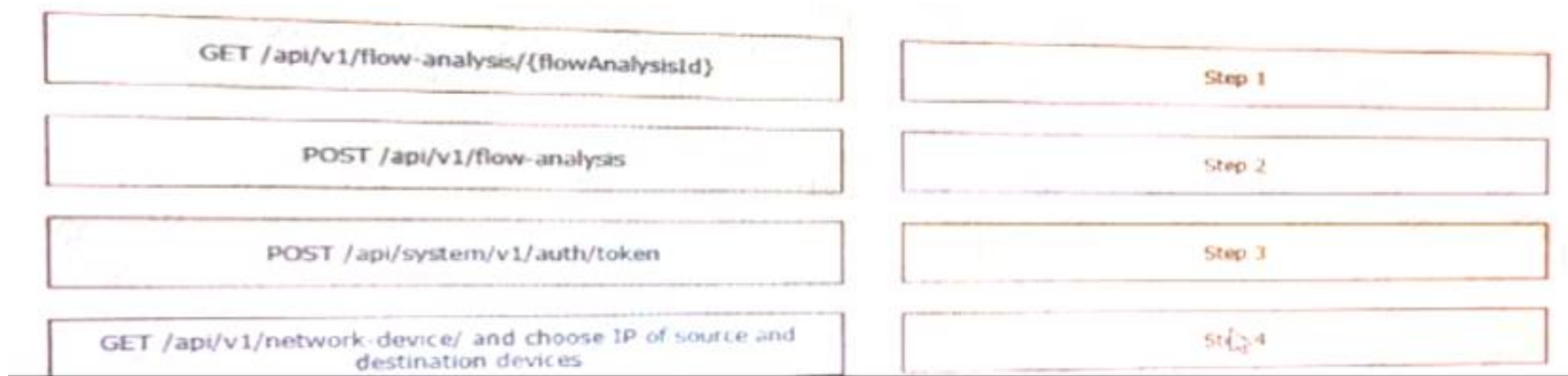
Answer: A

Explanation:

1 – B, 2 – E, 3 – C, 4 – D, 5 – A

NEW QUESTION 83

Refer to the exhibit.



The python interpreter and the Cisco python SDK are available by default in the Cisco NX-OS software. The SDK documentation shows how the cild() API can be used when working with working with JSON and XML. What are two effect of running the script? (Choose two.)

- A. configure interlace loopback 5
- B. issue shutdown on interface loopback 5
- C. show only the interfaces In the up status
- D. show only the interfaces in admin shut status
- E. show details for the TABLE interface

Answer: AC

NEW QUESTION 86

Fill in the blanks to complete the Python script to update the Webex Teams membership of a room using the Python requests library import requests



- A. Mastered
- B. Not Mastered

Answer: A

Explanation:
request, headers , payload

NEW QUESTION 89

What is the benefit of edge computing?

- A. It reduces ne two« k latency by moving processing doser to the data source.
- B. It simplifies security as devices and processing are brought doser together
- C. It removes the need for centralized data processing.
- D. It reduces data velocity from devices or other data sources.

Answer: A

NEW QUESTION 91

Which two statements describe the traits of an asynchronous API call? (Choose two.)

- A. The order in which API calls return can be guaranteed
- B. A call to an API does not block the code, but rather it allows application processing to continue
- C. The end user can experience latency or performance lag while waiting for the API call to return
- D. Code execution blocks or waits for the call to an API to return.

E. A callback function typically is used to process the response from an API call

Answer: BE

NEW QUESTION 96

Fill in the blanks to complete the statement.

Given a username of “devnet” And a password “Cisco123”, applications must create a base64 encoding of the string “_____” when sending HTTP requests to an API that uses _____ authentication.

Cisco DNA Center provides the capability to send an HTTP request to the API endpoint and receive the network list in format.

- A. Mastered
- B. Not Mastered

Answer: A

Explanation:

```
docker run -p 3000:5000 f877cbf2ff33
```

NEW QUESTION 97

Which statement describes the benefit of using functions in programming?

- A. Functions allow problems to be split into simpler, smaller groups, and reduce code repetition, which makes the code easier to read.
- B. Functions ensure that a developer understands the inner logic contained before using them as part of a script or application.
- C. Functions create the implementation of secret and encrypted algorithms.
- D. Functions store mutable values within a script or application.

Answer: A

NEW QUESTION 101

Drag and drop the Docker file instructions from the onto correct descriptions on the right. Not all options are used.

User	Represents a skill group in Unified CCE.
Dialog	Represents the current state of the system.
Media	Represents an agent, supervisor or administrator.
Queue	Represents a group of users.
Team	Represents a call and the participants if the media type is voice.
SystemInfo	Sends client-side logging to the Finesse Server.
ClientLogs	Represents a user's state in a non-voice Media Routing Domain.

- A. Mastered
- B. Not Mastered

Answer: A

Explanation:

1 – E, 2 – B, 3 – D, 4 – A

NEW QUESTION 106

What is the Git command to delete a local branch named “experiment” without a warning?

- A. git branch -n experiment
- B. git branch -rm experiment
- C. git branch -f experiment
- D. git branch -D experiment

Answer: D

NEW QUESTION 108

Which two elements are foundational principles of DevOps? (Choose two.)

- A. designing applications as microservices
- B. encouraging containers for the deployment of applications
- C. organizing cross-functional teams over organizational silos
- D. optimizing the cost of infrastructures
- E. automating over documenting

Answer: CE

NEW QUESTION 110

Refer to the exhibit.



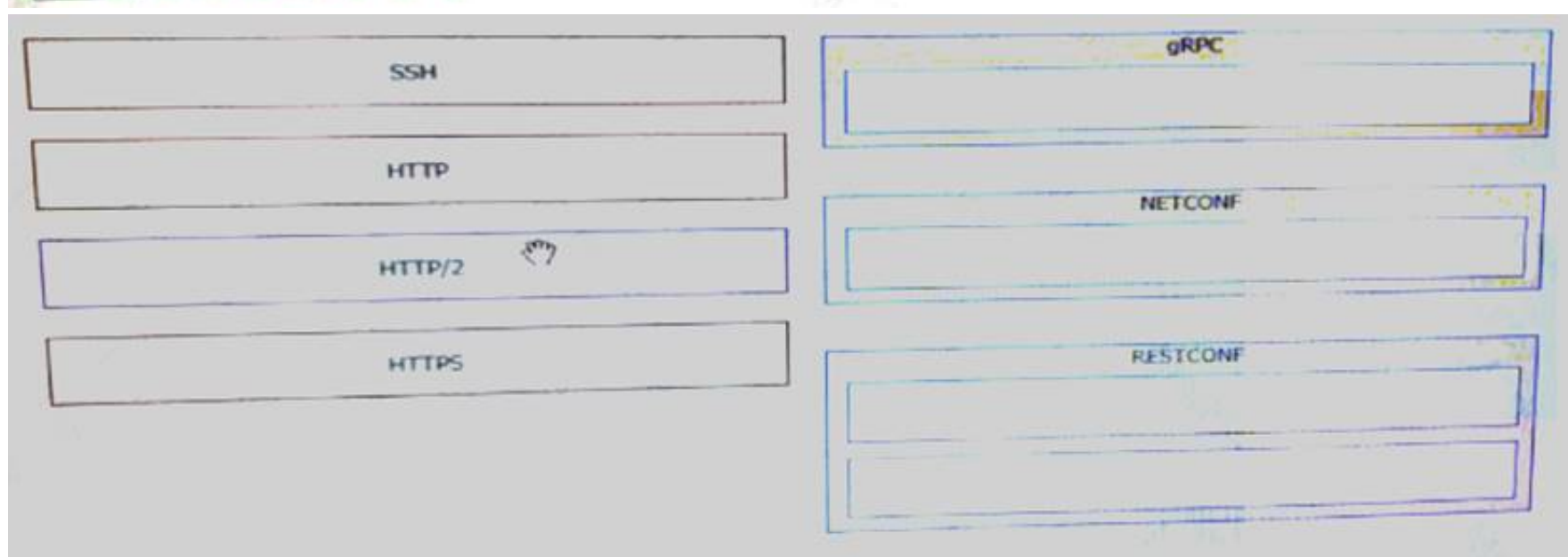
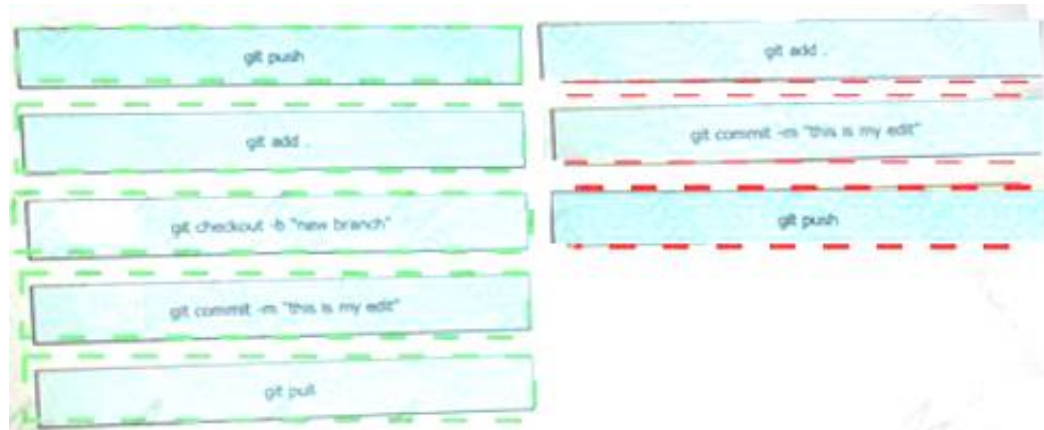
The definition of the YANG module and a RESTCONF query sent to a Cisco Ioc XE device is shown. Which statement is correct if the RESTCONF interface responds with a 204 status code?

- A. The query failed at retrieving the logging seventy level.
- B. The query failed to set the logging seventy level due to an invalid path.
- C. The query retrieved the logging seventy level.
- D. The query updated the logging seventy level or created it if not present on the device.

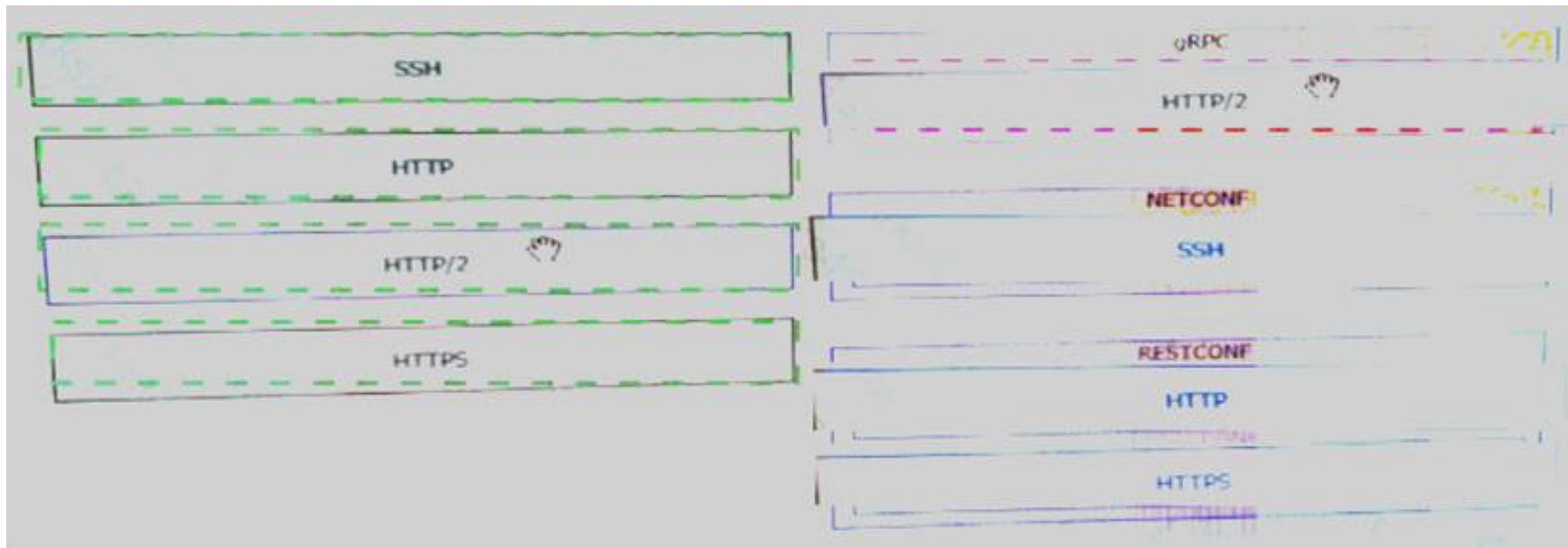
Answer: D

NEW QUESTION 115

Refer to the exhibit.



Drag and drop the code from the left onto the item numbers on the right to complete to Meraki python script shown in the exhibit.



- A. Mastered
- B. Not Mastered

Answer: A

Explanation:

1 – D, 2 – A, 3 – H, 4 – F, 5 – G, 6 – E, 7 – C, 8 – B

NEW QUESTION 118

Refer to the exhibit.

List the clients that have used this network in the timespan

HTTP REQUEST

GET /networks/ {networkId}/clients

PARAMETERS

t0

The beginning of the timespan for the data. The maximum lookback period is 31 days from today.

timespan

The timespan for which the information will be fetched. If specifying timespan, do not specify parameter t0. The value must be in seconds and be less than or equal to 31 days. The default is 1 day.

perPage

The number of entries per page returned. Acceptable range is 3 – 1000. Default is 10.

startingAfter

A token used by the server to indicate the start of the page. Often this is a timestamp or an ID but it is not limited to those. This parameter should not be defined by client applications. The link for the first, last, prev, or next page in the HTTP Link header should define it.

endingBefore

A token used by the server to indicate the end of the page. Often this is a timestamp or an ID but it is not limited to those. This parameter should not be defined by client applications. The link for the first, last, prev, or next page in the HTTP Link header should define it.

The output of a unified diff when comparing two versions of a python script is shown. Which two “single_request_timeout ()”

```

base_url = https://api.meraki.com/api/v0"
network_id = "L_12345678910"
api_key = "1098hadpfsiapsf8ahf8ohp"
requests.<item 1> (
    <item 2> + "/"<item 3>/" + /<item 4>, "/"<item 5>",
    headers = {
        "X-Cisco-Meraki-API-Key": "<item 6>",
        "Content-Type": "<item 7>"
    },
    <item 8>={"<item 9>":"/<item 10>}}
    
```

- A. Option A

- B. Option B
- C. Option C
- D. Option D

Answer: BC

NEW QUESTION 123

Package updates from a local server fail to download. However, the same updates work when a much slower external repository is used. Why are local updates failing?

- A. The update utility is trying to use a proxy to access the internal resource.
- B. The Internet connection is too slow.
- C. The Internet is down at the moment, which causes the local server to not be able to respond.
- D. The server is running out of disk space.

Answer: A

NEW QUESTION 128

.....

Thank You for Trying Our Product

* 100% Pass or Money Back

All our products come with a 90-day Money Back Guarantee.

* One year free update

You can enjoy free update one year. 24x7 online support.

* Trusted by Millions

We currently serve more than 30,000,000 customers.

* Shop Securely

All transactions are protected by VeriSign!

100% Pass Your 200-901 Exam with Our Prep Materials Via below:

<https://www.certleader.com/200-901-dumps.html>