



Cisco

Exam Questions 400-007

Cisco Certified Design Expert (CCDE v3.0) Written Exam

About ExamBible

[Your Partner of IT Exam](#)

Found in 1998

ExamBible is a company specialized on providing high quality IT exam practice study materials, especially Cisco CCNA, CCDA, CCNP, CCIE, Checkpoint CCSE, CompTIA A+, Network+ certification practice exams and so on. We guarantee that the candidates will not only pass any IT exam at the first attempt but also get profound understanding about the certificates they have got. There are so many alike companies in this industry, however, ExamBible has its unique advantages that other companies could not achieve.

Our Advances

* 99.9% Uptime

All examinations will be up to date.

* 24/7 Quality Support

We will provide service round the clock.

* 100% Pass Rate

Our guarantee that you will pass the exam.

* Unique Gurantee

If you do not pass the exam at the first time, we will not only arrange FULL REFUND for you, but also provide you another exam of your claim, ABSOLUTELY FREE!

NEW QUESTION 1

An enterprise network has two core routers that connect to 200 distribution routers and uses full-mesh IBGP peering between these routers as its routing method. The distribution routers are experiencing high CPU utilization due to the BGP process. Which design solution is the most cost effective?

- A. Implement route reflectors on the two core routers
- B. Increase the memory on the core routers
- C. Implement e BGP between the core and distribution routers
- D. Increase the memory on the distribution routers
- E. Increase bandwidth between the core routers

Answer: A

NEW QUESTION 2

Which two mechanisms avoid suboptimal routing in a network with dynamic mutual redistribution between multiple OSPFv2 and EIGRP boundaries? (Choose two.)

- A. AD manipulation
- B. matching OSPF external routes
- C. route tagging
- D. route tagging
- E. route filtering
- F. matching EIGRP process ID

Answer: DE

Explanation:

<https://www.cisco.com/c/en/us/support/docs/ip/enhanced-interior-gateway-routing-protocol-eigrp/8606-redist.ht>

NEW QUESTION 3

When consumers that leverage IaaS reach 100% resource capacity, what can be used to redirect the overflow of traffic to the public cloud so there is no disruption to service?

- A. cloud policing
- B. cloud spill
- C. cloud bursting
- D. cloud shaping

Answer: C

NEW QUESTION 4

Which management category is not part of FCAPS framework?

- A. Configuration
- B. Security
- C. Performance
- D. Authentication
- E. Fault-management

Answer: D

NEW QUESTION 5

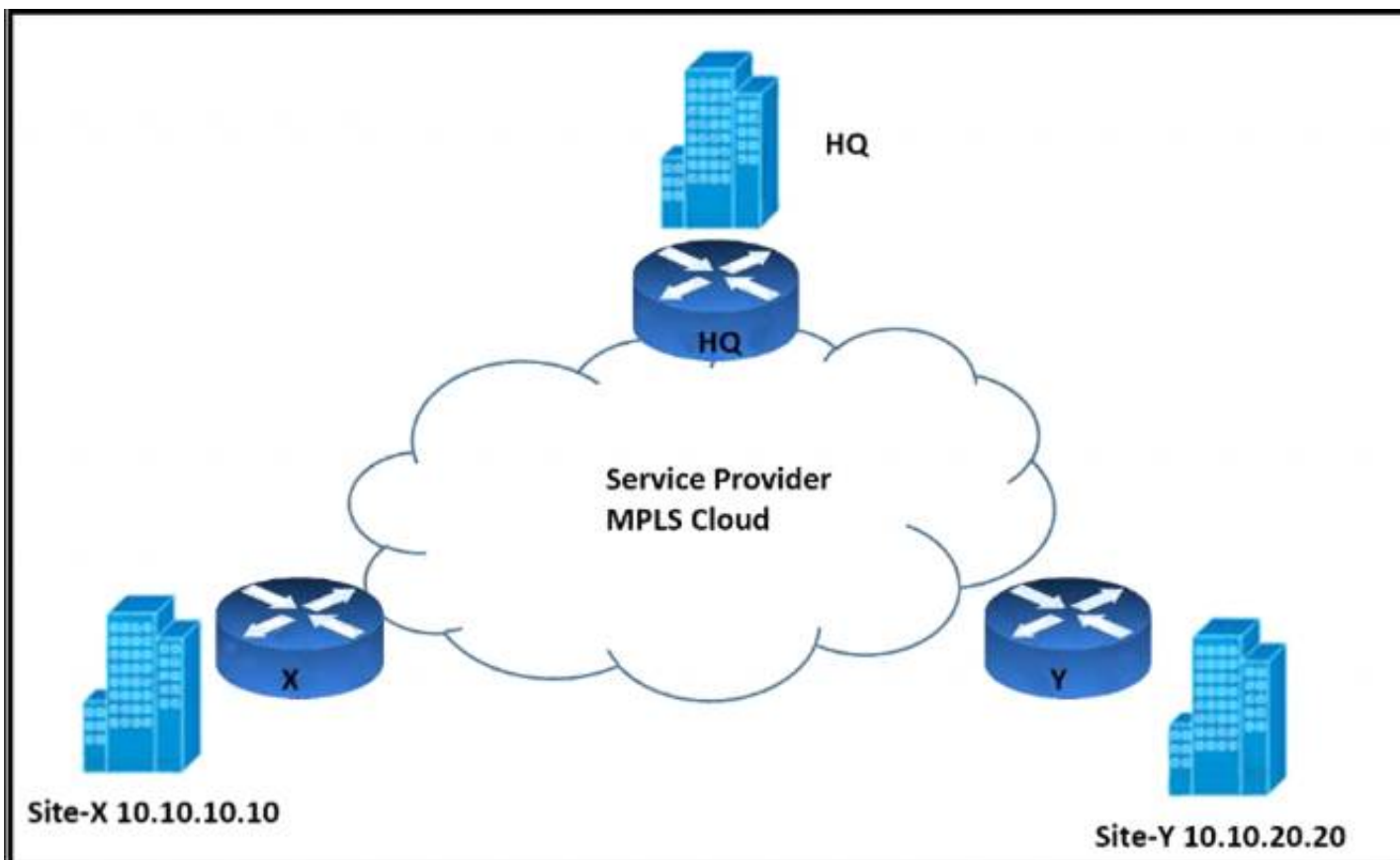
According to the CIA triad principles for network security design, which principle should be priority for a Zero Trust network?

- A. requirement for data-in-motion encryption and 2FA authentication
- B. requirement for data-at-rest encryption for user identification within the VPN termination hardware
- C. categorization of systems, data, and enterprise BYOD assets that are connected to network zones based on individual privacy needs
- D. ensuring that authorized users have high-availability system access from defined zones to defined systems or zones

Answer: A

NEW QUESTION 6

Refer to the exhibit.



An architect must design an enterprise WAN that connects the headquarters with 22 branch offices. The number of remote sites is expected to triple in the next three years. The final solution must comply with these requirements:

- Only the loopback address of each of the enterprise CE X and Y routers must be advertised to the interconnecting service provider cloud network.
- The transport layer must carry the VPNv4 label and VPN payload over the MP-BGP control plane.
- The transport layer must not be under service provider control.

Which enterprise WAN transport virtualization technique meets the requirements?

- A. EIGRP Over the Top
- B. MPLS over BGP over multipoint GRE
- C. DMVPN per VRF
- D. point-to-point GRE per VRF

Answer: B

NEW QUESTION 7

A customer migrates from a traditional Layer 2 data center network into a new SDN-based spine-and-leaf VXLAN EVPN data center within the same location. The networks are joined to enable host migration at Layer 2. What is the final migration step after hosts have physically migrated to have traffic flowing through the new network without changing any host configuration?

- A. Shut down legacy Layer 3 SVI
- B. clear ARP caches on all hosts being migrated and then configure the legacy VRRP address onto new VXLAN core switches
- C. Increase VRRP priorities on new infrastructure over legacy VRRP values, then shut down legacy SVIs
- D. Shut down legacy infrastructure to allow VXLAN gateways to become active
- E. Shut down legacy Layer 3 SVIs and activate new preconfigured Layer 3 SVIs on VXLAN

Answer: D

NEW QUESTION 8

Which two characteristics are associated with 802.1s? (Choose two)

- A. 802.1s supports up to 1024 instances of 802.1
- B. 802.1s is a Cisco enhancement to 802.1w.
- C. 802.1s provides for faster convergence over 802.1D and PVST+.
- D. CPU and memory requirements are the highest of all spanning-tree STP implementations.
- E. 802.1s maps multiple VLANs to the same spanning-tree instance

Answer: CE

NEW QUESTION 9

What statement describes the application layer as defined in the software-defined networking architecture?

- A. This layer is responsible for collecting the network status such as network usage and topology.
- B. This layer contains programs that communicate their desired network behavior to controllers.
- C. This layer is responsible for handling packets based on the rules provided by the controller.
- D. This layer processes the instructions and requirements sent by networking components.

Answer: B

NEW QUESTION 10

Which two foundational aspects of IoT are still evolving and being worked on by the industry at large? (Choose two)

- A. WiFi protocols

- B. Regulatory domains
- C. Low energy Bluetooth sensors
- D. IoT consortia
- E. Standards

Answer: AC

NEW QUESTION 10

Company XYZ network runs IPv4 and IPv6 and they want to introduce a multidomain, multicast-based network. The new design should use a flavor of PIM that forwards traffic using SPT. Which technology meets this requirement?

- A. PIM-DM
- B. PIM-SM
- C. PIM-SSM
- D. BIDIR-PIM

Answer: C

NEW QUESTION 15

What is a web-based model in which a third-party provider hosts applications that are available to customers over the Internet?

- A. PaaS
- B. SaaS
- C. IaaS
- D. WaaS

Answer: B

NEW QUESTION 16

Which two benefits can software-defined networks provide to businesses? (Choose two.)

- A. provides additional redundancy
- B. reduction of OpEx/CapEx
- C. reduced latency
- D. decentralized management
- E. enables innovation
- F. meets high traffic demands

Answer: BE

NEW QUESTION 21

Which two points must network designers consider when designing a new network design or when evaluating an existing network design to help them understand the high-level design direction with regards to the security aspects? (Choose two)

- A. Consider Business objectives and goals
- B. Consider organization's security policy standards
- C. Consider for only multi-site networks
- D. Consider for only new network technologies and components

Answer: AB

NEW QUESTION 24

You are designing the routing design for two merging companies that have overlapping IP address space. Which of these must you consider when developing the routing and NAT design?

- A. Local to global NAT translation is done after routing
- B. Global to local NAT translation is done before routing.
- C. Local to global NAT translation is done before policy-based routing
- D. Global to local NAT translation is done after policy-based routing.

Answer: B

NEW QUESTION 26

Which two conditions must be met for EIGRP to maintain an alternate loop-free path to a remote network? (Choose two.)

- A. The Reported Distance from a successor is lower than the local Feasible Distance.
- B. The Reported Distance from a successor is higher than the local Feasible Distance.
- C. The feasibility condition does not need to be met.
- D. The Feasible Distance from a successor is lower than the local Reported Distance.
- E. A feasible successor must be present.

Answer: AE

NEW QUESTION 30

Company XYZ needs advice in redesigning their legacy Layer 2 infrastructure. Which technology should be included in the design to minimize or avoid

convergence delays due to STP or FHRP and provide a loop-free topology?

- A. Use switch clustering in the access layer.
- B. Use switch clustering in the core/distribution layer.
- C. Use spanning-tree PortFast.
- D. Use BFD.

Answer: B

NEW QUESTION 35

Which two statements describe the usage of the IS-IS overload bit technique? (Choose two)

- A. If overload-bit is set on a Level 2 intermediate system, the other Level 2 intermediate systems in the topology will stop using the overloaded IS to forward Level 2 traffic However, the intermediate system can still forward Level 1 traffic
- B. It can be set in intermediate systems (IS-IS routers) to prioritize control plane CSNP packets.
- C. It can be used to automatically synchronize the link-state database between Level 1 intermediate systems
- D. It can be set in intermediate systems (IS-IS routers) to avoid traffic black holes until routing protocols are fully converged after a reload operation.
- E. It can be set in intermediate systems (IS-IS routers) to attract transit traffic from other intermediate systems

Answer: AD

NEW QUESTION 38

Drag and drop the design characteristics from the left onto the correct network filter techniques on the right. Not all options are used.

It is used to prevent spoofing attacks when there are alternate routes to a given IP address	Ingress Access Lists target 1
It is used to check the existence of a route without regard to the incoming interface	Strict Reverse Path Forwarding target 2
It is a dynamic filter	Feasible Path Reverse Path Forwarding target 3
It requires manual configuration	Loose Reverse Path Forwarding target 4
It is used as a filtering technique for Martian IP addresses	

- A. Mastered
- B. Not Mastered

Answer: A

Explanation:

It is used to prevent spoofing attacks when there are alternate routes to a given IP address	Ingress Access Lists It requires manual configuration
It is used to check the existence of a route without regard to the incoming interface	Strict Reverse Path Forwarding It is a dynamic filter
It is a dynamic filter	Feasible Path Reverse Path Forwarding It is used to prevent spoofing attacks when there are alternate routes to a given IP address
It requires manual configuration	Loose Reverse Path Forwarding It is used as a filtering technique for Martian IP addresses
It is used as a filtering technique for Martian IP addresses	

NEW QUESTION 43

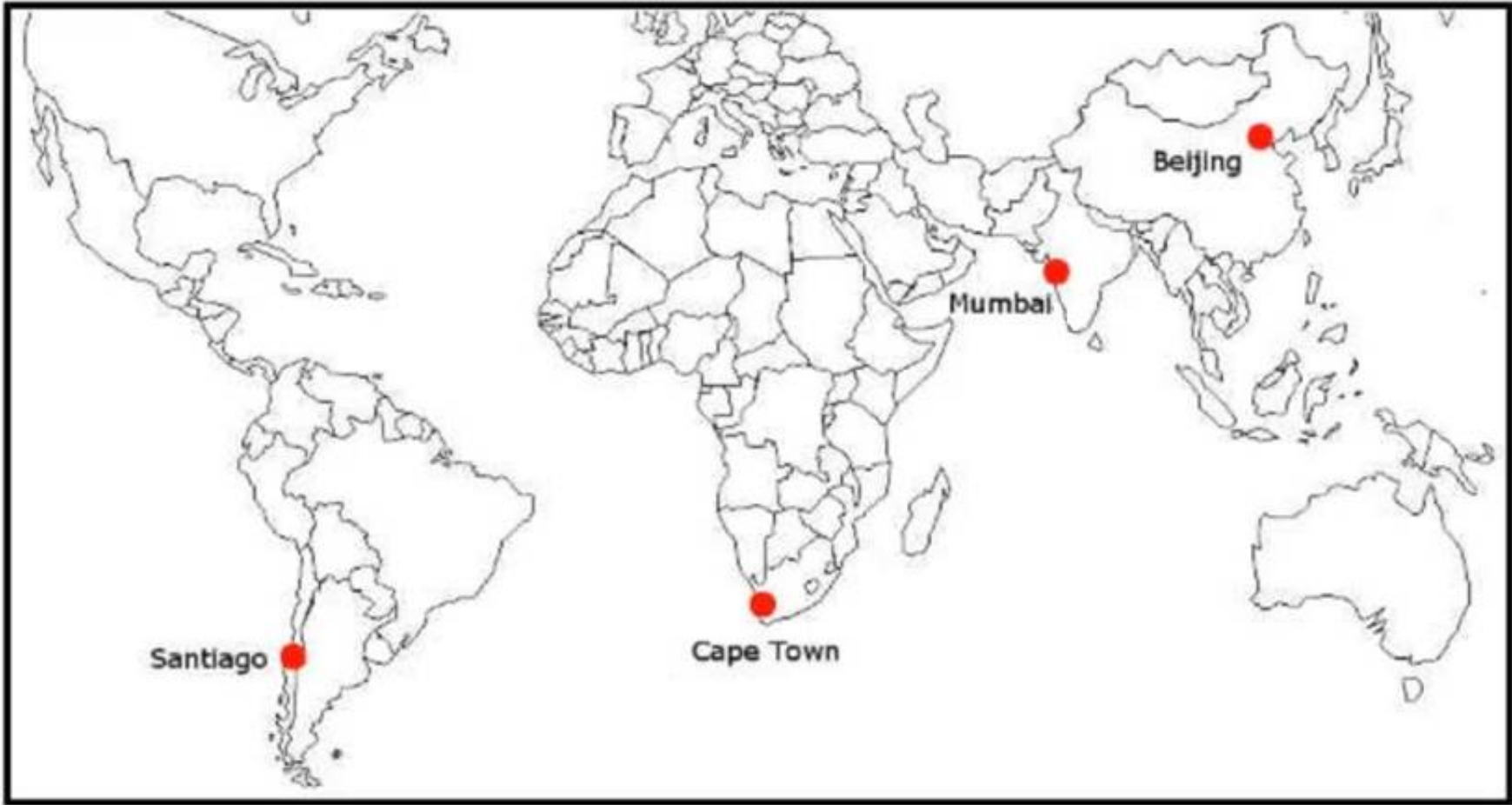
The administrator of a small branch office wants to implement the Layer 2 network without running STP The office has some redundant paths Which mechanism can the administrator use to allow redundancy without creating Layer 2 loops?

- A. Use double-sided VPC on both switches
- B. Use two port channels as Flex links
- C. Use fabric path with ECMP
- D. Use 802.3ad link bundling.

Answer: B

NEW QUESTION 44

Refer to the exhibit.



ACME Mining has four data centers in Santiago. Cape Town. Mumbai, and Beijing, full-mesh connected via a 400 Mb/s EVP-LAN They want to deploy a new mission-critical application with these requirements:

- > cluster heartbeat 2 Mb/s continuous (250 KB/s)
- > cluster heartbeat one-way maximum latency 100 ms

These are the current ping tests results between the four data centers:

	Santiago	Cape Town	Mumbai	Beijing
Santiago	-	280 ms	378 ms	409 ms
Cape Town	280 ms	-	185 ms	445 ms
Mumbai	383 ms	176 ms	-	443 ms
Beijing	430 ms	448 ms	442 ms	-

Which hosting data center pair can host the new application?

- A. Mumbai and Beijing
- B. Santiago and Cape Town
- C. Santiago and Mumbai
- D. Cape Town and Mumbai
- E. Cape Town and Beijing
- F. Santiago and Beijing

Answer: D

NEW QUESTION 49

In search of a system capable of hosting, monitoring compiling. and testing code in an automated way, what can be recommended to the organization?

- A. Jenkins
- B. Ansible
- C. Perl
- D. Chef

Answer: A

NEW QUESTION 50

A network attacker exploits application flaws to compromise critical systems in the organization with these objectives:

- Obtain sensitive data and export the data out of the network.
- Compromise developer and administrator credentials to potentially

What is the next step after application discovery is completed in Zero Trust networkings

- A. Establish visibility and behavior modeling
- B. Enforce policies and microsegmentation.
- C. Assess real-time security health.
- D. Ensure trustworthiness of systems.

Answer: A

Explanation:

<https://www.cisco.com/c/en/us/solutions/collateral/enterprise/design-zone-security/zt-arch-guide.html>

NEW QUESTION 55

What is the most important operational driver in building a resilient and secure modular network design?

- A. Dependencies on hardware or software that is difficult to scale
- B. Minimize app downtime
- C. Reduce the frequency of failures requiring human intervention
- D. Increase time spent on developing new features

Answer: B

NEW QUESTION 56

Which three items do you recommend for control plane hardening of an infrastructure device? (Choose three.)

- A. redundant AAA servers
- B. Control Plane Policing
- C. warning banners
- D. to enable unused .services
- E. SNMPv3
- F. routing protocol authentication

Answer: BEF

NEW QUESTION 57

Which two actions ensure voice quality in a branch location with a low-speed, high-latency WAN connection? (Choose two.)

- A. Increase WAN bandwidth
- B. Increase memory branch switch.
- C. Fragment data packets.
- D. Replace any electrical links with optical links
- E. Prioritize voice packets

Answer: CE

NEW QUESTION 61

A healthcare provider discovers that protected health information of patients was altered without patient consent. The healthcare provider is subject to HIPAA compliance and is required to protect PHI data. Which type of security safeguard should be implemented to resolve this issue?

- A. technical and physical access control
- B. administrative security management processes
- C. physical device and media control
- D. technical integrity and transmission security

Answer: D

Explanation:

https://www.cisco.com/en/US/docs/solutions/Enterprise/Compliance/HIPAA/HIP_AppC.html#wp1085353

NEW QUESTION 62

Which two technologies enable multilayer segmentation? (Choose two.)

- A. policy-based routing
- B. segment routing
- C. data plane markings
- D. firewalls
- E. filter lists

Answer: AD

NEW QUESTION 66

Which purpose of a dynamically created tunnel interface on the design of IPv6 multicast services is true?

- A. first-hop router registration to the RP
- B. multicast client registration to the RP
- C. multicast source registration to the RP
- D. transport of all IPv6 multicast traffic

Answer: D

NEW QUESTION 67

In an OSPF network with routers connected together with Ethernet cabling, which topology typically takes the longest to converge?

- A. partial mesh
- B. full mesh
- C. ring
- D. squared
- E. triangulated

Answer: B

NEW QUESTION 71

Company XYZ has 30 sites using MPLS L3 VPN and the company is now concerned about data integrity. The company wants to redesign the security aspect of their network based on these requirements:

- Securely transfer the corporate data over the private WAN
- Use a centralized configuration model.
- Minimize overhead on the tunneled traffic.

Which technology can be used in the new design to meet the company's requirements?

- A. S-VTI
- B. DMVPN
- C. MGRE
- D. GET VPN

Answer: D

NEW QUESTION 72

A multinational enterprise integrates a cloud solution with these objectives

- Achieve seamless connectivity across different countries and regions
- Extend data center and private clouds into public clouds and provider-hosted clouds

What are two outcomes of deploying data centers and fabrics that interconnect different cloud networks? (Choose two.)

- A. enhanced security
- B. data and network ownership
- C. ability to place workloads across clouds
- D. centralized visibility
- E. unidirectional workload mobility across the cloud

Answer: AC

NEW QUESTION 77

Which design benefit of bridge assurance is true?

- A. It supposes a spanning-tree topology change upon connecting and disconnecting a station on a port
- B. It prevents switched traffic from traversing suboptimal paths on the network.
- C. It allows small, unmanaged switches to be plugged into ports of access switches without the risk of switch loops.
- D. It prevents switch loops caused by unidirectional point-to-point link condition on Rapid PVST + and MST

Answer: D

NEW QUESTION 78

Which two pain points are the most common for container technology adoption? (Choose two)

- A. Performance
- B. Security
- C. Cost
- D. Container deployment
- E. Skilled staff
- F. Compliance

Answer: DE

NEW QUESTION 79

An engineer is designing a DMVPN network where OSPF has been chosen as the routing protocol A spoke-to-spoke 'J'ita propagation model must be set up Which two design considerations must be taken into account? (Choose two)

- A. Configure all the sites as network type broadcast
- B. The network type on all sites should be point-to-multipoint
- C. The network type should be point-to-multipoint for the hub and point-to-point for the spokes.
- D. The hub should be set as the DR by specifying the priority to 255.
- E. The hub should be the DR by changing the priority of the spokes to 0.

Answer: AE

NEW QUESTION 80

Company XYZ plans to run OSPF on a DMVPN network. They want to use spoke-to-spoke tunnels in the design. What is a drawback or concern in this type of design?

- A. Additional host routes will be inserted into the routing tables
- B. Manual configuration of the spokes with the appropriate priority will be needed
- C. There will be a split-horizon issue at the hub
- D. Manual configuration of the spoke IP address on the hub will be needed

Answer: B

NEW QUESTION 82

Company ABC uses IPv4-only. Recently they started deploying new endpoint devices. For operational reasons, IPv6 cannot be disabled on these new endpoint devices. Which security measure prevents the new endpoint from learning an IPv6 prefix from an attacker?

- A. Source Guard and Prefix Guard
- B. Router Advertisement Guard
- C. Prefix Guard
- D. Secure Neighbor Discovery

Answer: B

NEW QUESTION 86

Company XYZ is designing the network for IPv6 security and they have these design requirements:

- A switch or router must deny access to traffic from sources with addresses that are correct, but are topologically incorrect
- Devices must block Neighbor Discovery Protocol resolution for destination addresses that are not found in the binding table.

Which two IPv4 security features are recommended for this company? (Choose two)

- A. IPv6 DHCP Guard
- B. IPv6 Source Guard
- C. IPv6 Destination Guard
- D. IPv6 Prefix Guard
- E. IPv6 RA Guard

Answer: CD

Explanation:

https://www.cisco.com/c/dam/global/ja_jp/td/docs/ios-xml/ios/ipv6_fhsec/configuration/x6-16/ip6f-x6-16-book.

NEW QUESTION 90

An enterprise that runs numerous proprietary applications has major issues with its on-premises server estate hardware, to the point where business-critical functions are compromised. The enterprise accelerates plans to migrate services to the cloud. Which cloud service should be used if the enterprise wants to avoid hardware issues yet have control of its applications and operating system?

- A. SaaS
- B. PaaS
- C. IaaS
- D. hybrid cloud

Answer: C

NEW QUESTION 92

Which feature is supported by NETCONF but is not supported by SNMP?

- A. distinguishing between configuration data and operational data
- B. taking administrative actions
- C. collecting the status of specific fields
- D. changing the configuration of specific fields

Answer: A

NEW QUESTION 97

A business requirement is supplied to an architect from a car manufacturer stating their business model is changing to just-in-time manufacturing and a new network is required, the manufacturer does not produce all of the specific components in-house. Which area should the architect focus on initially?

- A. Automation
- B. Zero Trust Networking
- C. Low Latency Infrastructure
- D. Modularity

Answer: D

NEW QUESTION 99

Company XYZ branch offices connect to the headquarter sites using two links, MPLS and Internet. The company wants to design the traffic flow so that voice traffic goes through the MPLS link and all other traffic uses either the MPLS link or the Internet link. Which technique can the company use in their design to ensure that the traffic is not process switched?

- A. policy-based routing
- B. virtual links
- C. visualization
- D. floating static route

Answer: A

NEW QUESTION 103

Company XYZ has designed their network to run GRE over IPsec on their Internet-based VPN to connect two sites. Which IPsec tunneling feature can they enable to optimize the data flow while ensuring that the headers contain no duplicate IP addresses?

- A. Transport Mode in IPsec Phase I
- B. Transport Mode in IPsec Phase II
- C. Tunnel Mode in IPsec Phase II
- D. Tunnel Mode in IPsec Phase I

Answer: B

NEW QUESTION 107

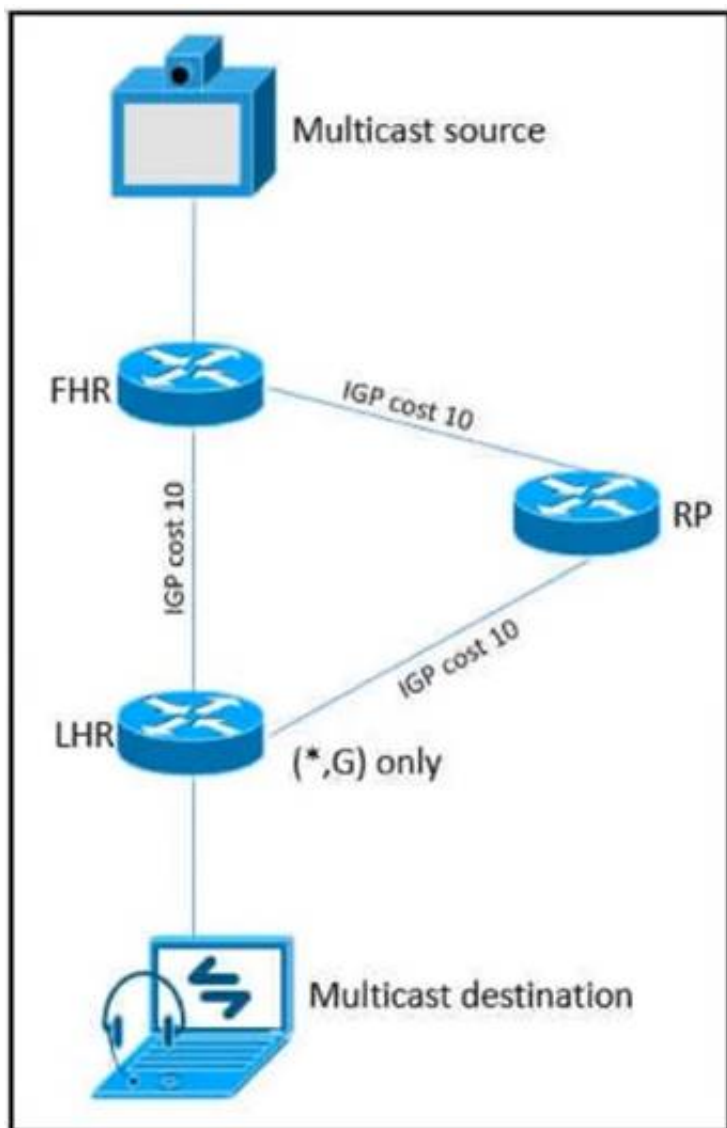
You have been tasked with designing a data center interconnect as part of business continuity. You want to use FCoE over this DCI to support synchronous replication. Which two technologies allow for FCoE via lossless Ethernet or data center bridging? (Choose two.)

- A. DWDM
- B. EoMPLS
- C. SONET/SDH
- D. Multichassis EtherChannel over Pseudowire
- E. VPLS

Answer: AC

NEW QUESTION 109

Refer to the exhibit.



As part of a redesign project, you must predict multicast behavior. What happens to the multicast traffic received on the shared tree (*,G), if it is received on the LHR interface indicated*?

- A. It is dropped due to an unsuccessful RPF check against the multicast source
- B. It is switched given that no RPF check is performed
- C. It is switched due to a successful RPF check against the routing table
- D. It is dropped due to an unsuccessful RPF check against the multicast receiver.

Answer: A

Explanation:

<https://www.cisco.com/c/en/us/support/docs/ip/ip-multicast/16450-mcastguide0.html>

When a multicast packet arrives on an interface, the RPF process checks to ensure that this incoming interface is the outgoing interface used by unicast routing in order to reach the source of the multicast packet. This RPF check process prevents loops. Multicast routing does not forward a packet unless the source of the packet passes a RPF check. Once a packet passes this RPF check, multicast routing forwards the packet based only upon the destination address.

NEW QUESTION 113

What are two examples of components that are part of an SDN architecture? (Choose two.)

- A. software plane
- B. control plane
- C. application plane
- D. management plane
- E. network plane

Answer: BD

NEW QUESTION 115

Which three items do you recommend for control plane hardening of an infrastructure device? (Choose three.)

- A. routing protocol authentication
- B. SNMPv3
- C. Control Plane Policing
- D. redundant AAA servers
- E. warning banners
- F. to enable unused services

Answer: ABC

NEW QUESTION 120

Which two features are advantages of SD-WAN compared to MPLS-based connectivity? (Choose two.)

- A. uses FEC constructs for traffic forwarding, thereby improving efficiency
- B. separates infrastructure and policy
- C. uses policy-based forwarding of real-time traffic with less complexity
- D. unifies the WAN backbone
- E. manages failures through backup links

Answer: CD

NEW QUESTION 125

What are two descriptions of network optimization? (Choose two.)

- A. maintain high availability
- B. proactive network management
- C. network redesign
- D. network health maintenance
- E. identify network requirements

Answer: AD

NEW QUESTION 129

Which two factors must be considered for high availability in campus LAN designs to mitigate concerns about unavailability of network resources? (Choose two.)

- A. device resiliency
- B. device type
- C. network type
- D. network resiliency
- E. network size

Answer: AD

NEW QUESTION 130

Which function is performed at the access layer of the three-layer hierarchical network design model?

- A. fault isolation
- B. QoS classification and marking boundary
- C. reliability
- D. fast transport
- E. redundancy and load balancing

Answer: B

NEW QUESTION 131

Which best practice ensures data security in the private cloud?

- A. Use IPsec for communication between unsecured network connection
- B. Encrypt data at rest and in transition.
- C. Use the same vendor for consistent encryption.
- D. Anonymize data ownership to comply with privacy rules.

Answer:

B

NEW QUESTION 134

What are two primary design constraints when a robust infrastructure solution is created? (Choose two.)

- A. monitoring capabilities
- B. project time frame
- C. staff experience
- D. component availability
- E. total cost

Answer: BE

NEW QUESTION 136

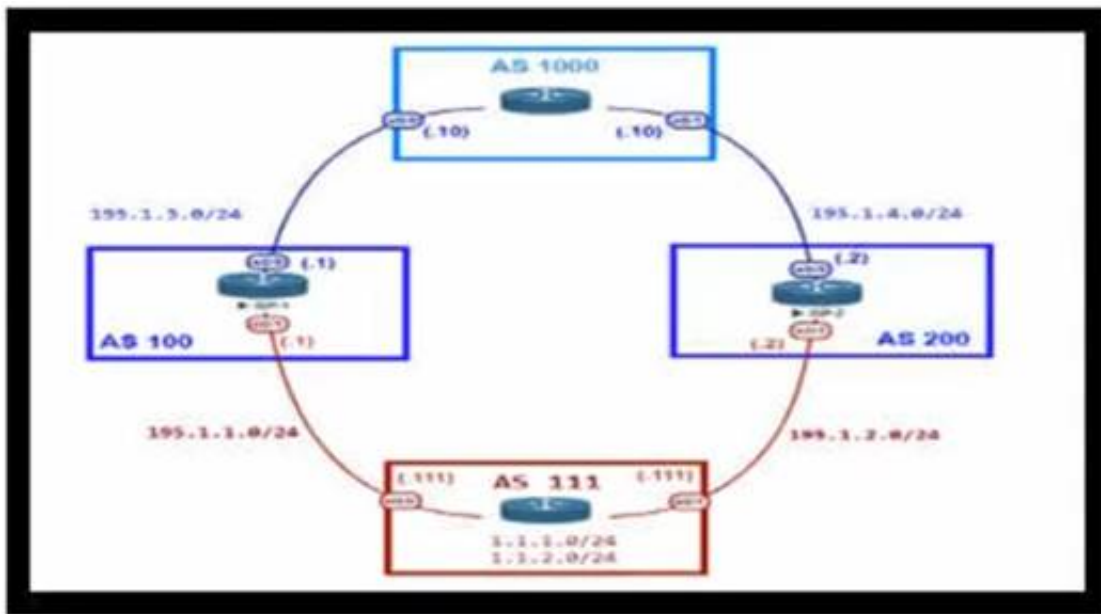
Which tool automates network implementation activities and shortens the implementation lifecycle?

- A. LISP
- B. Java
- C. Conclusion
- D. Python

Answer: D

NEW QUESTION 141

Refer to the exhibit.



An engineer is designing the network for a multihomed customer running in AS 111 does not have any other Ass connected to it. Which technology is more comprehensive to use in the design to make sure that the AS is not being used as a transit AS?

- A. Configure the AS-set attribute to allow only routes from AS 111 to be propagated to the neighbor ASs.
- B. Use the local preference attribute to configure your AS as a non-transit" AS.
- C. include an AS path access list to send routes to the neighboring ASs that only have AS 111 in the AS path field.
- D. Include a prefix list to only receive routes from neighboring ASs.

Answer: C

NEW QUESTION 144

A business customer deploys workloads in the public cloud. Now the customer network faces governance issues with the flow of IT traffic and must ensure the security of data and intellectual property. Which action helps to identify the issue for further resolution?

- A. Set up a secure tunnel from customer routers to ensure that traffic is protected as it travels to the cloud service providers.
- B. Send IPFIX telemetry data from customer routers to a centralized collector to identify traffic to cloud service providers
- C. Build a zone-based firewall policy on Internet edge firewalls that collects statistics on traffic sent to cloud service providers
- D. Apply workload policies that dictate the security requirements to the workloads that are placed in the cloud.

Answer: B

NEW QUESTION 148

Agile and Waterfall are two popular methods for organizing projects. What describes any Agile network design development process?

- A. working design over comprehensive documentation
- B. contract negotiation over customer collaboration
- C. following a plan over responding to change
- D. processes and tools over individuals and interactions over time

Answer: A

NEW QUESTION 153

Router R1 is a BGP speaker with one peering neighbor over link "A". When the R1 link/interface "A" fails, routing announcements are terminated, which results in the tearing down of the state for all BGP routes at each end of the link. What is this a good example of?

- A. fault isolation
- B. resiliency
- C. redundancy
- D. fate sharing

Answer: D

NEW QUESTION 155

Company XYZ is running BGP as their routing protocol. An external design consultant recommends that TCP path MTU discovery be enabled. Which effect will this have on the network?

- A. It will enhance the performance of TCP-based applications.
- B. It will increase the convergence time.
- C. It will improve the convergence time.
- D. It will create a loop free path.

Answer: A

NEW QUESTION 160

An existing wireless network was designed to support data traffic only. You must now install context Aware services for location tracking changes must be applied to the existing wireless network to increase the location accuracy? (Chose two)

- A. Add access points along the perimeter of the coverage area.
- B. Increase the access point density to create an average inter-access point distance of less than 40 feet or 12.2 meters
- C. Use directional antennas to provide more cell overlapping
- D. Install additional access points in monitor mode where the co-channel interference would otherwise be affected
- E. Fine tune the radio configuration of the access point to have a higher average transmission power to achieve better coverage

Answer: BE

NEW QUESTION 161

Drag and drop the multicast protocols from the left onto the current design situation on the right.

PIM-SM, SSM, BIDIR

PIM-DM, PIM-SM, SSM, BIDIR

IGMP

MSDP

MP-BGP

MLD

IPv4

host registration

router registration

inderdomain source discovery

IPv6

host registration

router registration

- A. Mastered
- B. Not Mastered

Answer: A

Explanation:

A picture containing table Description automatically generated

NEW QUESTION 162

Which effect of using ingress filtering to prevent spoofed addresses on a network design is true?

- A. It reduces the effectiveness of DDoS attacks when associated with DSCP remarking to Scavenger.
- B. It protects the network Infrastructure against spoofed DDoS attacks.
- C. It Classifies bogus traffic and remarks it with DSCP bulk.
- D. It filters RFC 1918 IP addresses.

Answer: B

NEW QUESTION 166

How many fully established neighbour relationships exist on an Ethernet with five routers running OSPF as network type broadcast?

- A. 5
- B. 6
- C. 7
- D. 10
- E. 20

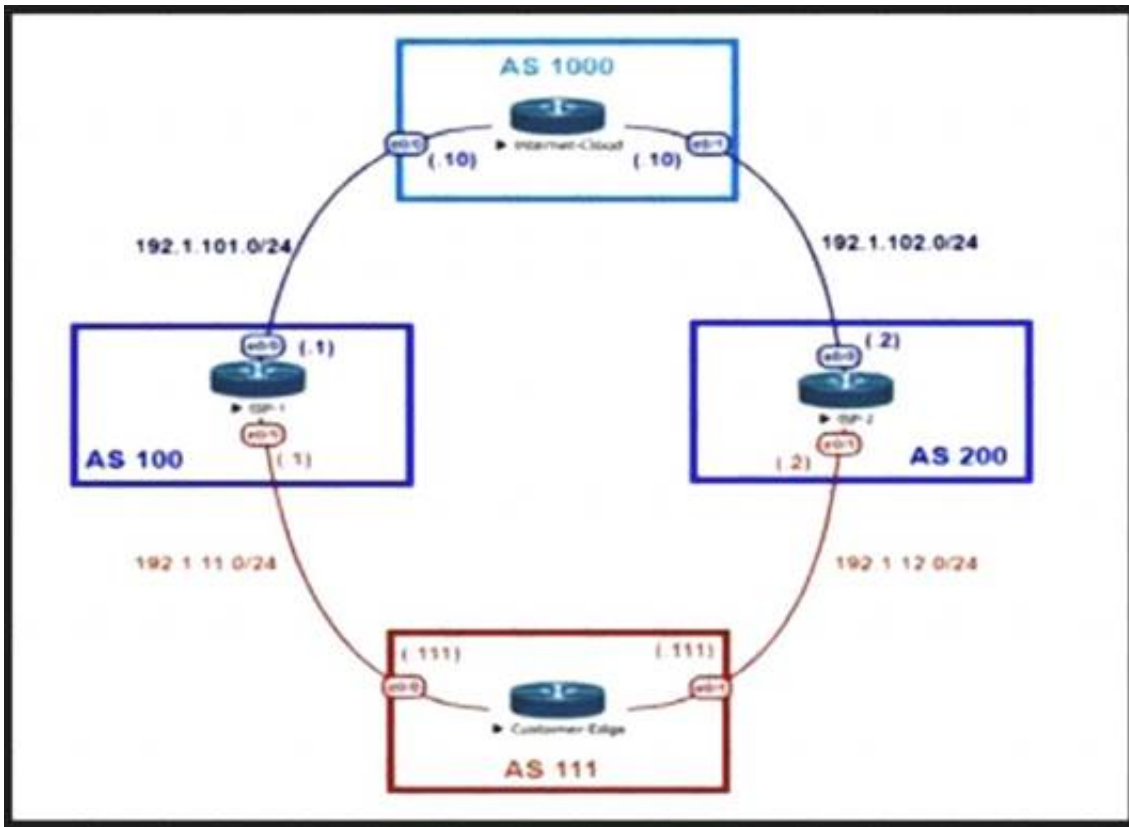
Answer: C

Explanation:

Assuming routers R1-R5, R1 is elected DR, R2 BDR. Fully established neighborships only occur to DR and BDR, all other neighbors are in 2Way DR other state.
 DR|BDRFull relationships:
 R2-R1 R3-R1 R3-R2 R4-R1 R4-R2 R5-R1 R5-R2

NEW QUESTION 170

Refer to the exhibit.



An engineer is designing the traffic flow for AS 111. Traffic from AS 111 should be preferred via AS 100 for all external routes. A method must be used that only affects AS 111. Which BGP attributes are best suited to control outbound traffic?

- A. community
- B. MED
- C. local preference
- D. As path

Answer: C

NEW QUESTION 174

Which BGP feature provides fast convergence?

- A. BGP PIC |
- B. BGP-EVPN
- C. BGP FlowSpec
- D. BGP-LS

Answer: A

NEW QUESTION 179

What is a description of a control plane action?

- A. de-encapsulating and re-encapsulating a packet in a data-link frame
- B. matching the destination MAC address of an Ethernet frame to the MAC address table
- C. matching the destination IP address of an IP packet to the IP routing table
- D. hosts locating routers that reside on attached links using the IPv6 Neighbor Discover Protocol

Answer: D

NEW QUESTION 183

An enterprise wants to provide low-cost delivery of network systems that can be scaled on business demand, followed by an initiative to reduce capital expenses for new IT equipment. Which technology meets these goals'?

- A. IaaS within a private cloud
- B. IaaS within an on-premises location
- C. PaaS within a public cloud
- D. SaaS within an on-premises location

Answer: C

NEW QUESTION 184

Identity and access management between multiple users and multiple applications has become a mandatory requirement for Company XYZ to fight against ever increasing cybersecurity threats. To achieve this, federated identity services have been deployed in the Company XYZ network to provide single sign-on and Multi-Factor Authentication for the applications and services. Which protocol can be used by Company XYZ to provide authentication and authorization services?

- A. OAuth2
- B. OpenID Connect
- C. OpenID
- D. SAML2.0

Answer: D

NEW QUESTION 185

Which feature must be part of the network design to wait a predetermined amount of time before notifying the routing protocol of a change in the path in the network?

- A. Transmit delay
- B. Throttle timer
- C. SPF hold time
- D. Interface dampening

Answer: B

NEW QUESTION 188

Drag and drop the multicast protocols from the left onto the current design situation on the right.

PIM-SM, SSM, BIDIR	IPv4 Group Management
PIM-DM, PIM-SM, SSM, BIDIR	IPv4 Forwarding
IGMP	IPv4 Interdomain Source Discovery
MSDP	IPv6 Group Management
MLD	IPv6 Forwarding

- A. Mastered
- B. Not Mastered

Answer: A

Explanation:

A picture containing table Description automatically generated

IPv4:
Host Registration - IGMP
Router Registration - PIM-DM, PIM-SM, SSM, BIDIR Inter-Domain Source Discovery - MSDP
IPv6:
Host Registration - MLD
Router Registration - PIM-SM, SSM, BIDIR

NEW QUESTION 189

SDN emerged as a technology trend that attracted many industries to move from traditional networks to SDN. Which challenge is solved by SDN for cloud service providers?

- A. need for intelligent traffic monitoring
- B. exponential growth of resource-intensive application
- C. complex and distributed management flow
- D. higher operating expense and capital expenditure

Answer: B

NEW QUESTION 194

If the desire is to connect virtual network functions together to accommodate different types of network service connectivity what must be deployed?

- A. bridging
- B. service chaining
- C. linking
- D. daisy chaining
- E. switching

Answer: B

Explanation:

Service chaining is the technique of connecting virtual network functions together to provide different types of network service connectivity. Service chaining uses software-defined networking (SDN) programmability to create a chain of connected network services, such as firewalls, load balancers, NAT, and intrusion protection. Service chaining can automate the provisioning of network applications that have different characteristics and requirements, such as security, latency,

or quality of service (QoS). Service chaining can also optimize the use of network resources and improve application performance by using SDN analytics and performance tools to select the best available network paths and avoid network congestion. Service chaining is being used in many SDN and network functions virtualization (NFV) use cases and deployments, such as data centers, carrier networks, and virtual customer edge123. References:

- 1: What is Network Service Chaining or Service Function Chaining - SDxCentral
- 2: On service chaining using Virtual Network Functions in Network-enabled Cloud systems | IEEE Conference Publication | IEEE Xplore
- 3: Service function chaining - Gini5

NEW QUESTION 198

The Company XYZ network requires OSPF dead neighbor detection in a subsecond manner However the company network does not support BFD Which other feature can be used to fulfill the design requirement?

- A. STP
- B. fast hello
- C. LFA
- D. DPD

Answer: B

NEW QUESTION 199

Company XYZ is migrating their existing network to IPv6 and they must plan for Layer 2 and Layer 3 devices Some of the access layer switches do not support IPv6, however, core and distribution switches fully support unicast and multicast routing. The company wants to minimize cost of the migration. Which migration strategy should be used in the design?

- A. The access layer switches must support IGMP snooping at a minimu
- B. Any switches that do not support IGM snooping must be replaced.
- C. Upgrade the nonsupporting switches Otherwise, it will cause an issue with the migration.
- D. Layer 2 switches will not affect the implementation of IPv6. They can be included in the design in their current state.
- E. The access layer switches must support DHCPv6. Any switches that do not support DHCPv6 must be replaced.

Answer: C

NEW QUESTION 204

Various teams in different organizations within an enterprise are preparing low-level design documents to capture network parameters using a Waterfall project model:

- hardware sizing and power consumption
- Layer 2 and layer 3 services parameters
- configuration of all control plane protocols

Input from relevant stakeholders was captured at the start of the project, and the project scope has been defined based on the parameters above. What impact will it have on documentation and project deliverables if the stakeholders ask to have changes carried out in the network before the information has been captured?

- A. This provides more opportunity to think outside the box.
- B. Rework is expected before the delivery.
- C. Significant effort and time are required.
- D. This provides a flexible approach to incorporate changes.

Answer: B

NEW QUESTION 209

Which development model is closely associated with traditional project management?

- A. static model
- B. Agile model
- C. evolutionary delivery model
- D. lifecycle model

Answer: D

NEW QUESTION 214

The Company XYZ network is experiencing attacks against their router. Which type of Control Plane Protection must be used on the router to protect all control plane IP traffic that is destined directly for one of the router interfaces?

- A. Control Plane Protection host subinterface
- B. Control Plane Protection main interface
- C. Control Plane Protection transit subinterface
- D. Control Plane Protection CEF-exception subinterface

Answer: A

NEW QUESTION 217

The General Bank of Greece plans to upgrade its legacy end-of-life WAN network with a new flexible, manageable, and scalable solution. The mam requirements are ZTP support, end-to-end encryption application awareness and segmentation. The CTO states that the main goal of the bank is CAPEX reduction. Which WAN technology should be used for the solution?

- A. SD-branch
- B. DMVPN with PfR
- C. managed SD-WAN

D. SD-WAN

Answer: C

NEW QUESTION 221

.....

Relate Links

100% Pass Your 400-007 Exam with ExamBible Prep Materials

<https://www.exambible.com/400-007-exam/>

Contact us

We are proud of our high-quality customer service, which serves you around the clock 24/7.

Viste - <https://www.exambible.com/>