



Cisco

Exam Questions 200-901

Developing Applications and Automating Workflows using Cisco Core Platforms (DEVASC)

NEW QUESTION 1

Refer to the exhibit.

```
$ diff -u5 fish.py cat.py
--- fish.py      2020-01-02 09:41:02.840000000 +0100
+++ cat.py      2020-01-02 09:41:06.8859999800 +0100
@@ -160,11 +160,12 @@

    @single_request_timeout.setter
    def single_request_timeout(self, value):
        """The timeout (seconds) for a single HTTP REST API request."""
        check_type(value, int, optional=True)
-       assert value is None or value > 0
+       if value is not None and value <= 0:
+           raise ValueError("single_request_timeout must be positive integer")
        self._single_request_timeout = value

    @property
    def wait_on_rate_limit(self)
        """Automatic rate-limit handling.
```

What does the python function do?

- A. It returns DNAC user and password.
- B. It returns HTTP Basic Authentication.
- C. It returns an authorization token.
- D. It reads a token from a local JSON file and posts the token to the DNAC URL.

Answer: C

NEW QUESTION 2

What are two advantages of version control software? (Choose two.)

- A. It supports tracking and comparison of changes in binary formate files.
- B. It allows old versions of packaged applications to be hosted on the Internet
- C. It provides wiki collaboration software for documentation.
- D. It supports comparisons between revisions of source code files.
- E. It allows new team members to access the current code and history.

Answer: DE

NEW QUESTION 3

Drag and drop the network automation interfaces from the left onto the transport protocols that they support on the right. (Not all Options are used)

400	Unauthorized
401	Not Found
403	Bad Request
404	Forbidden

- A. Mastered
- B. Not Mastered

Answer: A

Explanation:

Grpc == http/2 , netconfig == ssh , restconfig == https

NEW QUESTION 4

Fill in the blanks to complete the python script to request a service ticket using the APIC-EM rest API for the user "devnetuser".

The focus is on advanced planning and outcome prediction.

Users receive functional software and can provide feedback after the product is available.

The timeline is followed and feedback is gathered before product completion.

Developers respond to requirement changes throughout the development process.

Agile

Waterfall

- A. Mastered
- B. Not Mastered

Answer: A

Explanation:
 Solution as below

The focus is on advanced planning and outcome prediction.

Users receive functional software and can provide feedback after the product is available.

The timeline is followed and feedback is gathered before product completion.

Developers respond to requirement changes throughout the development process.

Agile

The focus is on advanced planning and outcome prediction.

Developers respond to requirement changes throughout the development process.

Waterfall

Users receive functional software and can provide feedback after the product is available.

The timeline is followed and feedback is gathered before product completion.

NEW QUESTION 5

Refer to the exhibit.

```
curl -X [redacted] -H "[redacted]: application/json" \
-H "[redacted]: Bearer AbCdEf123456" https://localhost/api/myresource
```

Which two statement describe the configuration of the Ansible script is run? (Choose two.)

- A. Traffic on port 0/2 and 0/3 is connected to port 0/6.
- B. Traffic from ports 0/2 to 0/5 can flow on port 0/1 due to the trunk.
- C. Traffic can flow between ports 0/2 to 0/5 due to the trunk on port 0/1.
- D. GigabitEthernet0/2 and GigabitEthernet0/3 are access ports for VLAN 6.
- E. GiabitEthernet0/1 is left unconfigured.

Answer: BD

NEW QUESTION 6

Refer to the exhibit.

```
$ pyang -f tree Cisco-IOS-XE-native.yang
module: Cisco-IOS-XE-native
  +--rw native
    +--rw logging
      +--rw monitor|
        +--rw severity? logging-level-type

$ curl --insecure -v -X PATCH \
  "https://ios-xe-mgmt-latest.cisco.com:9443/restconf/data/Cisco-IOS-XE-native:native" \
  -H 'Authorization: Basic ZGV2ZWxvcGVyOkMxc2NvMTIzNDU=' -H 'Accept: application/yang-data+json' \
  -H 'Content-Type: application/yang-data+json' \
  -d '{ "Cisco-IOS-XE-native:native" : { "logging" : { "monitor" : { "severity" : "alerts" }} } }'
> ...
< ...
< HTTP/1.1 204 No Content
```

What is represented in this YANG module?

- A. interface management
- B. topology
- C. BGP
- D. OpenFlow

Answer: A

NEW QUESTION 7

What are two benefit of managing network configuration via APIs? (Choose two.)

- A. configuration on devices becomes less complex
- B. more security due to locking out manual device configuration
- C. increased scalability and consistency of network changes
- D. eliminates the need of legacy management protocols like SNMP
- E. reduction in network changes performed manually

Answer: CE

NEW QUESTION 8

Drag and drop the network component names from the left onto the correct descriptions on the right. Not all options are used.

```
#!/bin/bash
BACKUPTIME    = `date +%b-%d-%y`
DESTINATION   = /home/usr/path/backup-$BACKUPTIME.tar.gz
SOURCEFOLDER  = /home/usr/path/data_folder

tar -cpzf $DESTINATION $SOURCEFOLDER
```

- A. Mastered
- B. Not Mastered

Answer: A

Explanation:

1 – A, 2 – B, 3 – D, 4 – C

NEW QUESTION 9

What is the outcome of executing this command?

```
git clone ssh://john@exmaple.com/path/to/my-project_git
```

- A. Creates a local copy of a repository called "my project"
- B. Creates a copy of a branch called "my project"
- C. Initiates a new Git repository called "my project"
- D. Creates a new branch called "my project"

Answer: A

NEW QUESTION 10

Refer to the exhibit.


```
{
  "items": [{
    "kind": "object#NetworkObj",
    "selfLink": "https://10.201.230.5/api/objects/networkobjects/db01",
    "name": "db01",
    "host": {
      "kind": "IPv4address",
      "value": "172.16.0.11"
    },
    "objectId": "db01"
  }]
}
```

What is the action of the Bash script that is shown?

- A. The script waits until input is entered
- B. If the directory exists, the script goes into it until there is no directory with the same name, then it creates a new directory.
- C. The script goes into the directory called "\$ndir" and makes a new directory called "\$ndir"
- D. The script waits until input is entered, then it goes into the directory entered and creates a new directory with the same name.
- E. For all directories in the current folder
- F. The script goes into directory and makes a new directory.

Answer: A

NEW QUESTION 10

Which is an advantage of using network programmability?

- A. It removes CLI access for devices.
- B. It provides for more scalable and replicable network provisioning.
- C. Manual configuration is faster.
- D. No cloud abstraction occurs.

Answer: B

NEW QUESTION 14

Which two NETCONF operations cover the RESTCONF GET operation? (Choose two.)

- A. <get>
- B. <edit>
- C. <get-update>
- D. <modify-config>
- E. <get-config>

Answer: AE

NEW QUESTION 17

Which platform has an API that can be used to obtain a list of vulnerable software on user devices?

- A. Cisco Umbrella
- B. Cisco Firepower
- C. Cisco Identity Services Engine
- D. Cisco Advanced Malware Protection

Answer: D

NEW QUESTION 19

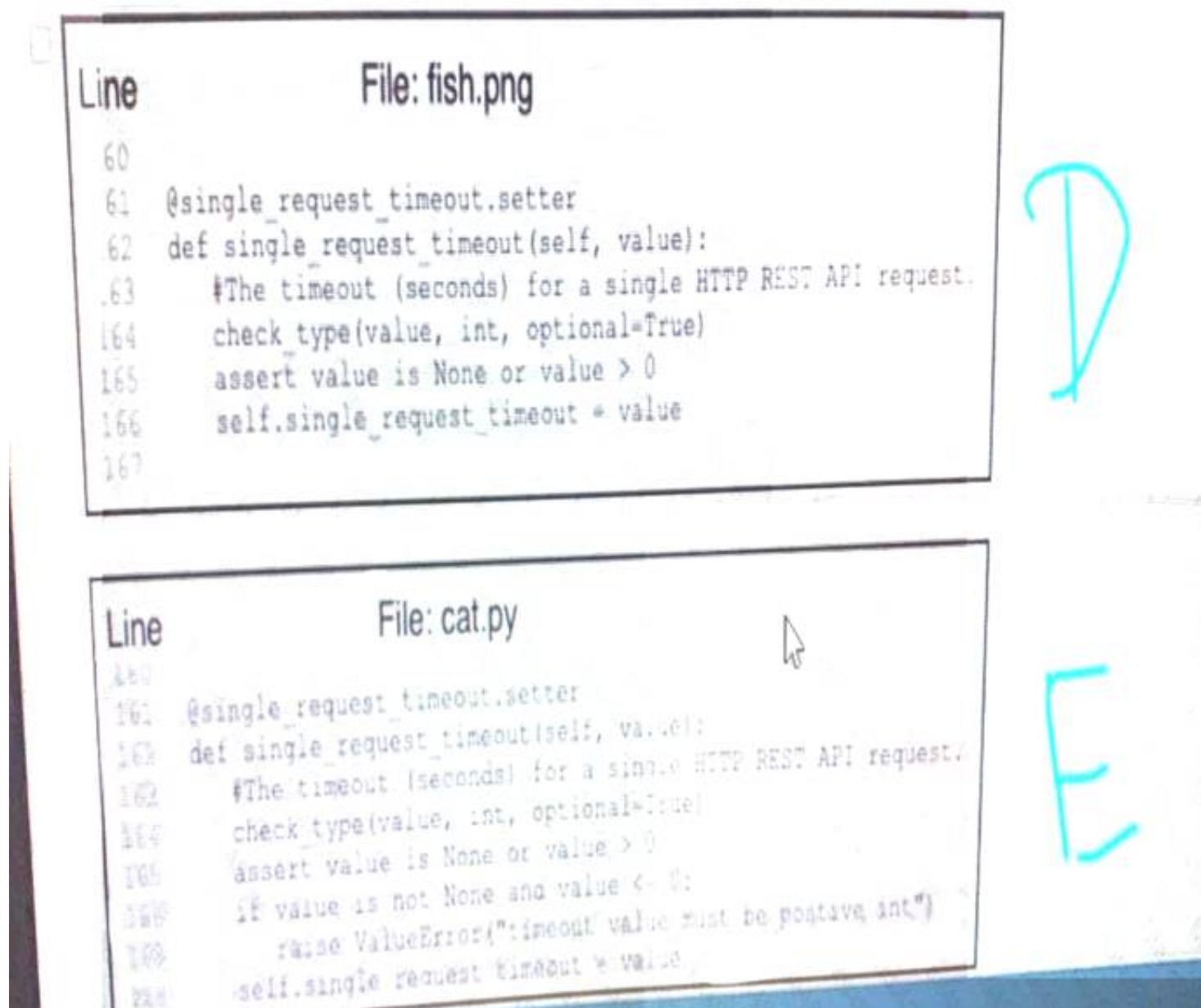
When using the Bash shell, how is the output of the devnet command saved to a file named "output.txt"?

- A. devnet & output.txt
- B. devnet > output.txt
- C. devnet < output.txt
- D. devnet | output.txt

Answer: B

NEW QUESTION 24

Refer to the exhibit.



What is the effect of this Ansible playbook on an IOS router?

- A. A new running configuration is pushed to the IOS router.
- B. The current running configuration of the IOS router is backed up.
- C. The start-up configuration of the IOS router is copied to a local folder.
- D. A new start-up configuration is copied to the IOS router.

Answer: B

NEW QUESTION 29

Which two types of NAT are used in a network? (Choose two.)

- A. Static NAT
- B. Normal NAT
- C. Multicast NAT
- D. Dynamic NAT
- E. Router NAT

Answer: AD

NEW QUESTION 34

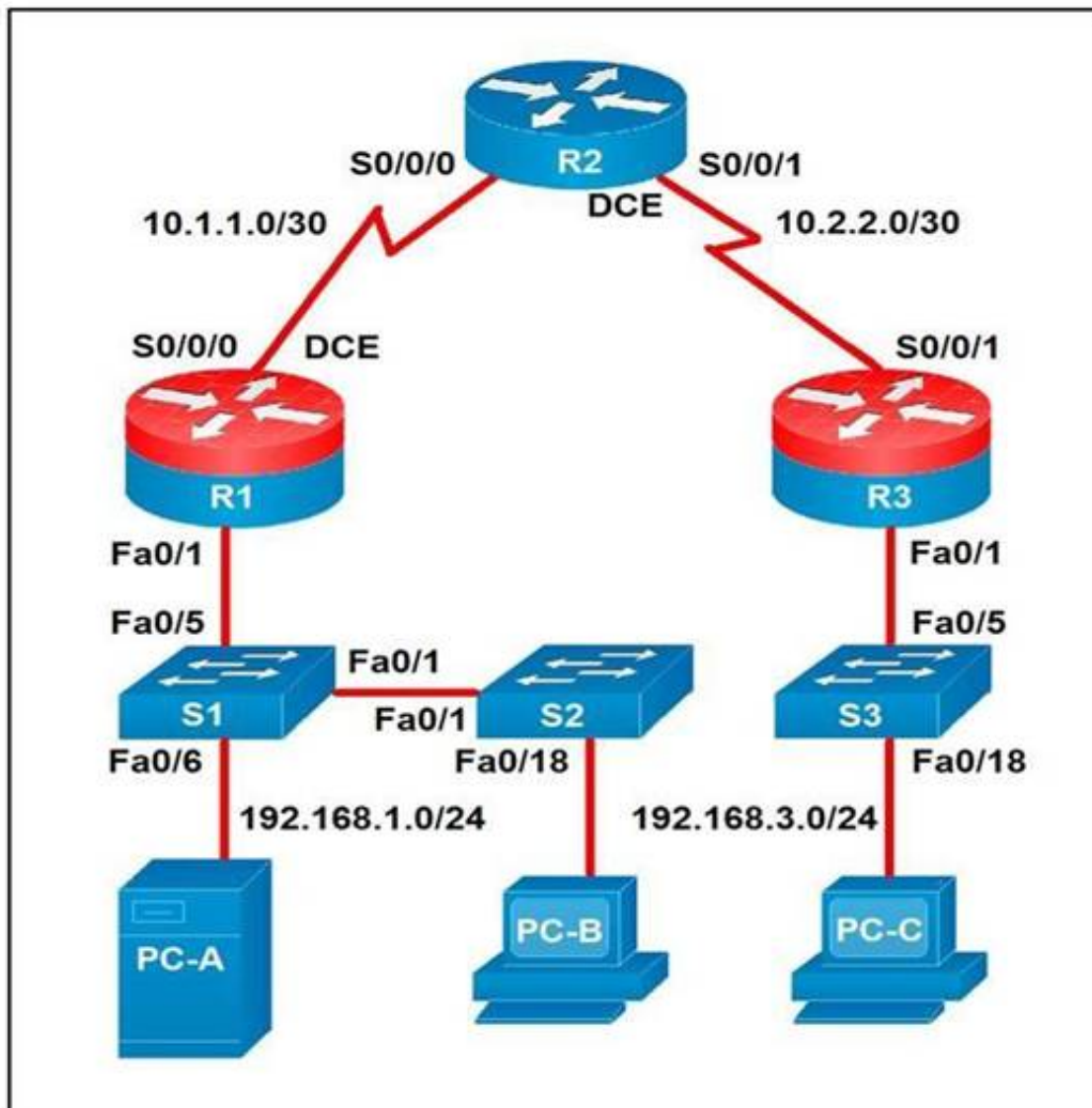
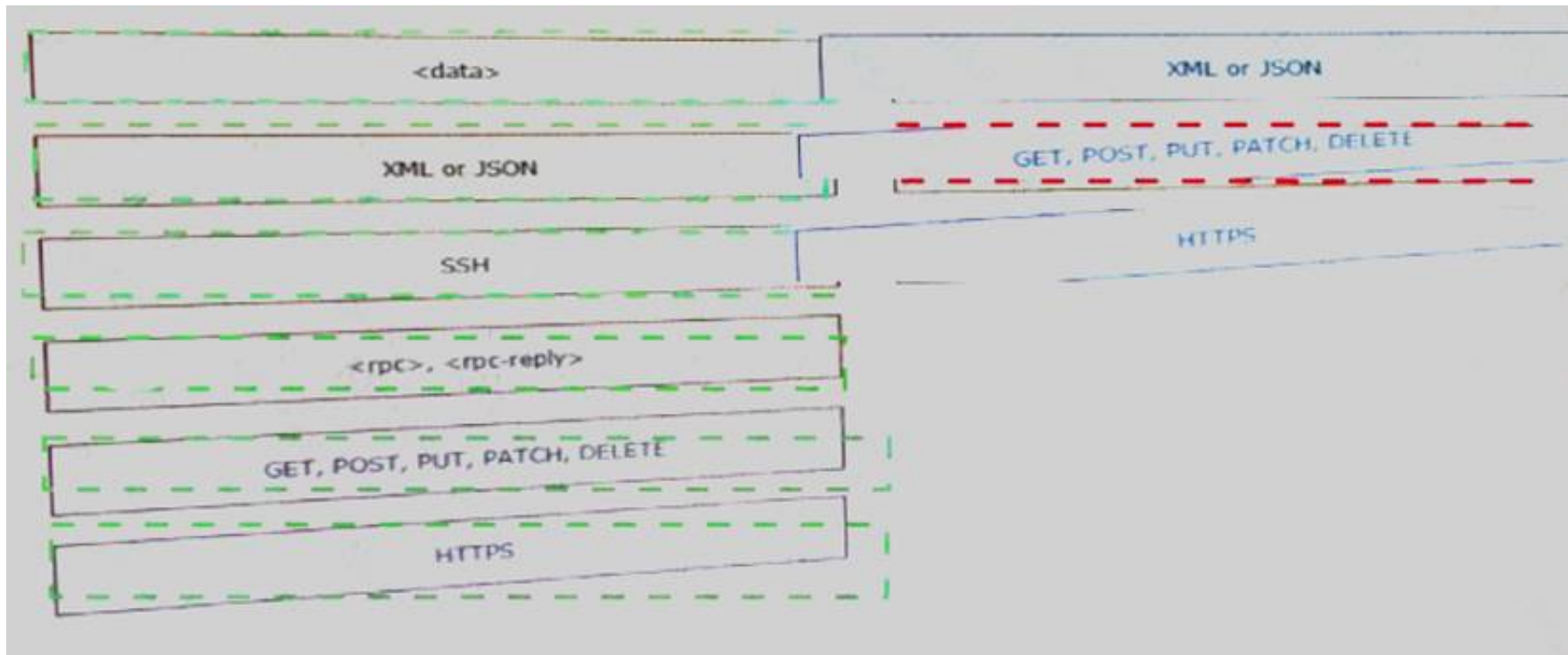
What are two characteristics of Bare Metal environments that are related to application deployment? (Choose two.)

- A. Provide the hypervisor to host virtual servers
- B. Specifically designed for container-based workloads.
- C. Provides workloads with access to hardware features
- D. Suitable for legacy application that do not support virtualization
- E. Not compatible with other cloud services such as PaaS or SaaS offerings.

Answer: CD

NEW QUESTION 36

Refer to the exhibit.



A developer is troubleshooting an API with the given API with the given API documentation and cURL command. What is the cause of this problem?

- A. The user is not allowed to post messages from their account
- B. The request body is missing or incomplete
- C. The API token specified is expired
- D. The authorization header is missing or incomplete

Answer: C

NEW QUESTION 40

Before which process is code review performed when version control is used?

- A. committing code
- B. branching code
- C. merge of code
- D. checkout of code

Answer: C

NEW QUESTION 42

Drag and drop elements of the RESTCONF protocol stack from the left onto the correct description on the right. Not all elements on the left are used.


```
List the networks in a Meraki organization:

GET https://api.meraki.com/api/v0/organizations/<org_id>/networks
Response code: 200
Response body: [ {
  "id": <network_id>,
  "name": "Test Network",
  "organization_id": <new_org_id>,
  "type": "wireless",
  "timeZone": "America/Los_Angeles",
  "tags": " test "
} ]
```

- A. Mastered
- B. Not Mastered

Answer: A

Explanation:

1 – B, 2 – E, 3 - F

NEW QUESTION 46

Which two statements describe the advantages of using a version control system? (Choose two.)

- A. It allows for branching and merging so that different tasks are worked on in isolation before they are merged into a feature or master branch.
- B. It allows multiple engineers to work against the same code and configuration files and manage differences and conflicts.
- C. It provides tooling to automate application builds and infrastructure provisioning.
- D. It allows developers to write effective unit tests.
- E. It provides a system to track User Stories and allocate to backlogs.

Answer: AB

NEW QUESTION 47

Which Cisco DevNet resource allows access to products in a development lab to explore, learn, and build application that use Cisco APLs?

- A. DevNet communities
- B. DevNet code Exchange
- C. DevNet Automation Exchange
- D. DevNet sandbox

Answer: D

NEW QUESTION 49

Refer to the exhibit.

URL: https://<ASA_IP>/api/access/global/rules

Method: POST

Payload:

```
{
  "destinationAddress": {
    "kind": "IPv4Address",
    "value": "10.1.1.1"
  },
  "remarks": [ ],
  "active": true,
  "permit": true,
  "sourceAddress": {
    "kind": "IPv4Address",
    "value": "192.168.1.1"
  }
}
```

Response Status Code: 400 Bad Request

```
{ "messages": [{"level": "Error", "code": "JSON-PARSE-ERROR", "details": "
  Unexpected character ('\"' (code 34)):"
```


What is the function of the python script?

- A. Count and print the total number of available devices.
- B. Iterate over a list of network devices and write all device names and management IP addresses to an output file.
- C. Iterate over a list of network devices and write all device type and associated management IP address.
- D. For each device that is returned, display the device and, for each device, print the device name and management IP address.
- E. Loop through the returned list of network devices and, for each device, print the device name management IP address.

Answer: E

NEW QUESTION 53

Which principle is a value from the manifesto for Agile software development?

- A. adhering to a plan over responding to requirements
- B. detailed documentation over working software
- C. processes and tools over teams and interactions
- D. customer collaboration over contract negotiation

Answer: D

NEW QUESTION 58

Which action does the Git command `git merge` allow the development to perform?

- A. Combine multiple sequence of commits into one unified history.
- B. Push changes to the remote repository
- C. Switch between branches
- D. Create, list, rename, and delete branches

Answer: A

NEW QUESTION 59

Which two statements describe the traits of an asynchronous API call? (Choose two.)

- A. The order in which API calls return can be guaranteed
- B. A call to an API does not block the code, but rather it allows application processing to continue
- C. The end user can experience latency or performance lag while waiting for the API call to return
- D. Code execution blocks or waits for the call to an API to return.
- E. A callback function typically is used to process the response from an API call

Answer: BE

NEW QUESTION 63

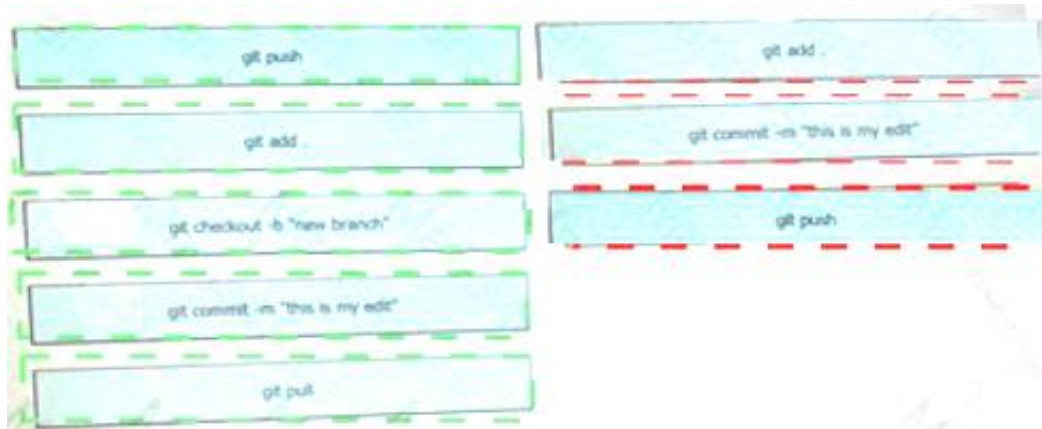
What is the Git command to delete a local branch named "experiment" without a warning?

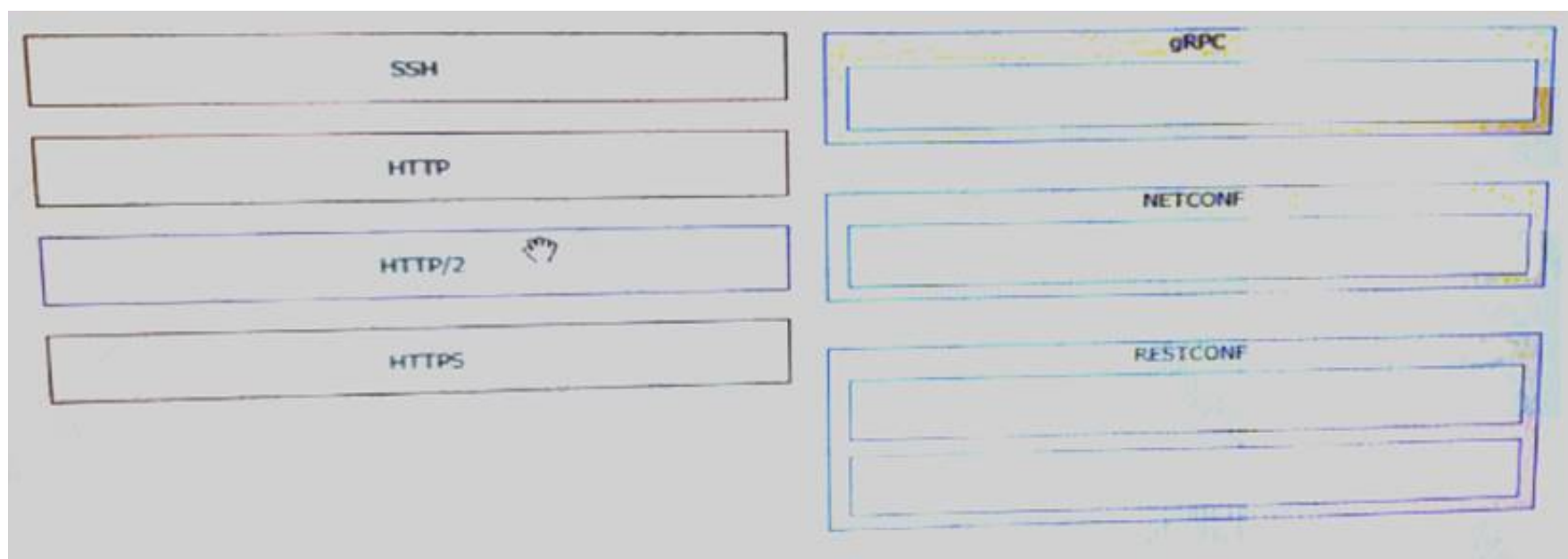
- A. `git branch -n experiment`
- B. `git branch -rm experiment`
- C. `git branch -f experiment`
- D. `git branch -D experiment`

Answer: D

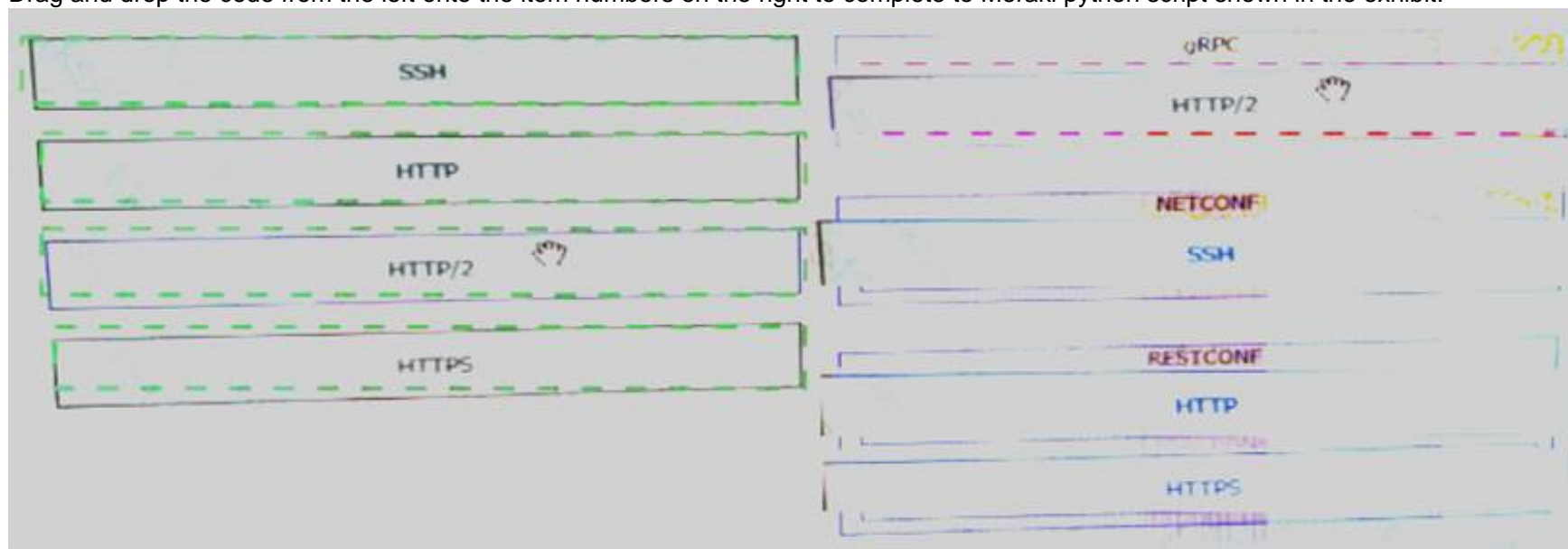
NEW QUESTION 68

Refer to the exhibit.





Drag and drop the code from the left onto the item numbers on the right to complete to Meraki python script shown in the exhibit.



- A. Mastered
- B. Not Mastered

Answer: A

Explanation:

1 – D, 2 – A, 3 – H, 4 – F, 5 – G, 6 – E, 7 – C, 8 – B

NEW QUESTION 71

What is the purpose of the Cisco VIRL software tool?

- A. To verify configurations against compliance standards
- B. To simulate and model networks
- C. To automate API workflows
- D. To test performance of an application

Answer: B

NEW QUESTION 74

.....

Thank You for Trying Our Product

We offer two products:

1st - We have Practice Tests Software with Actual Exam Questions

2nd - Questions and Answers in PDF Format

200-901 Practice Exam Features:

- * 200-901 Questions and Answers Updated Frequently
- * 200-901 Practice Questions Verified by Expert Senior Certified Staff
- * 200-901 Most Realistic Questions that Guarantee you a Pass on Your FirstTry
- * 200-901 Practice Test Questions in Multiple Choice Formats and Updatesfor 1 Year

100% Actual & Verified — Instant Download, Please Click
[Order The 200-901 Practice Test Here](#)