

## 300-410 Dumps

# Implementing Cisco Enterprise Advanced Routing and Services (ENARSI)

<https://www.certleader.com/300-410-dumps.html>



### NEW QUESTION 1

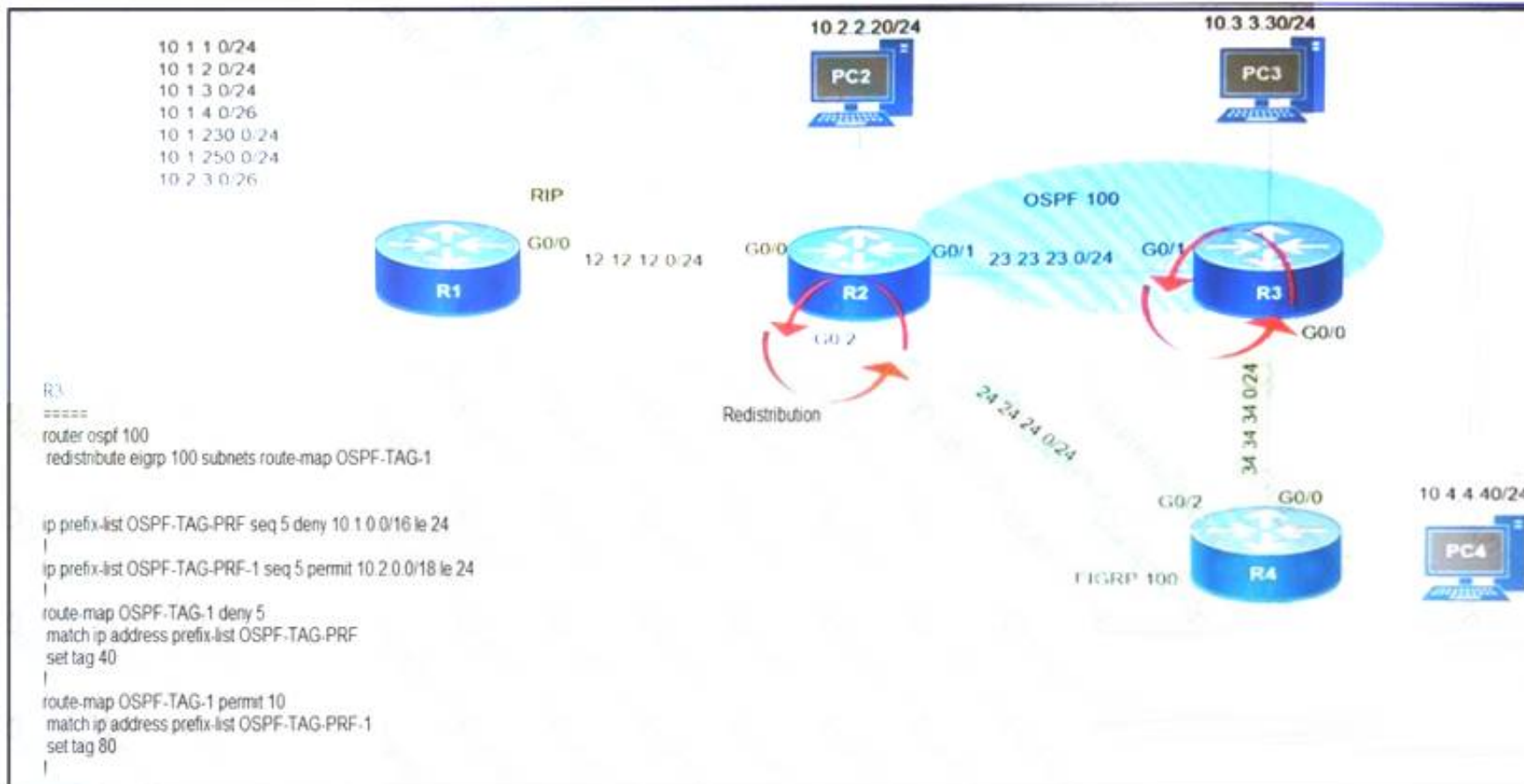
Which transport layer protocol is used to form LDP sessions?

- A. UDP
- B. SCTP
- C. TCP
- D. RDP

**Answer: C**

### NEW QUESTION 2

Refer to the exhibit.



Which subnet is redistributed from EIGRP to OSPF routing protocols?

- A. 10.2.2.0/24
- B. 10.1.4.0/26
- C. 10.1.2.0/24
- D. 10.2.3.0/26

**Answer: A**

### NEW QUESTION 3

Refer to the exhibit.

```
R1(config)#route-map ADD permit 20
R1(config-route-map)#set tag 1

R1(config)#router ospf1
R1(config-router)#redistribute rip subnets route-map ADD
```

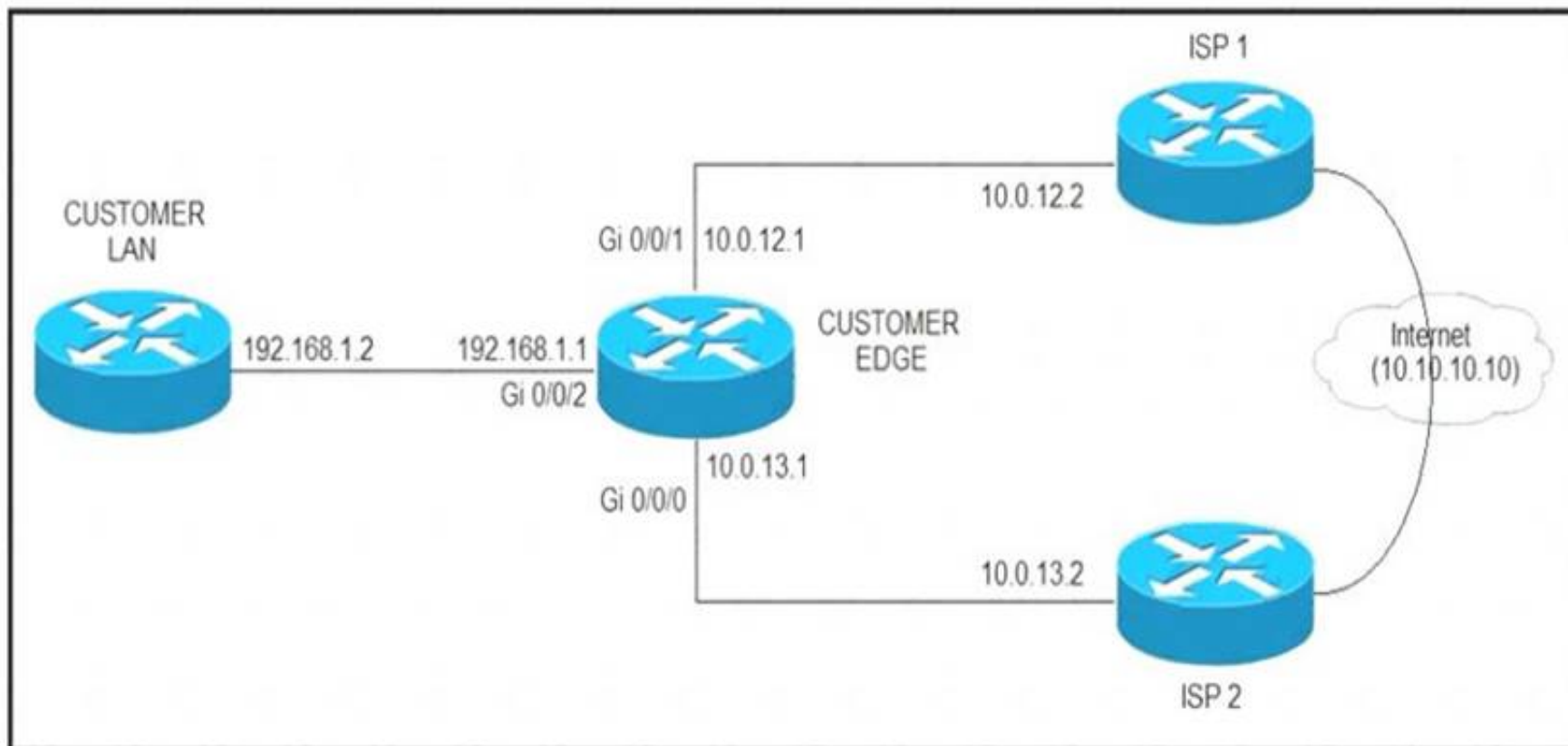
Which statement about R1 is true?

- A. OSPF redistributes RIP routes only if they have a tag of one.
- B. RIP learned routes are distributed to OSPF with a tag value of one.
- C. R1 adds one to the metric for RIP learned routes before redistributing to OSPF.
- D. RIP routes are redistributed to OSPF without any changes.

**Answer: B**

### NEW QUESTION 4

Refer to the exhibit.



ISP 1 and ISP 2 directly connect to the Internet. A customer is tracking both ISP links to achieve redundancy and cannot see the Cisco IOS IP SLA tracking output on the router console. Which command is missing from the IP SLA configuration?

- A. Start-time 00:00
- B. Start-time 0
- C. Start-time immediately
- D. Start-time now

**Answer: D**

#### NEW QUESTION 5

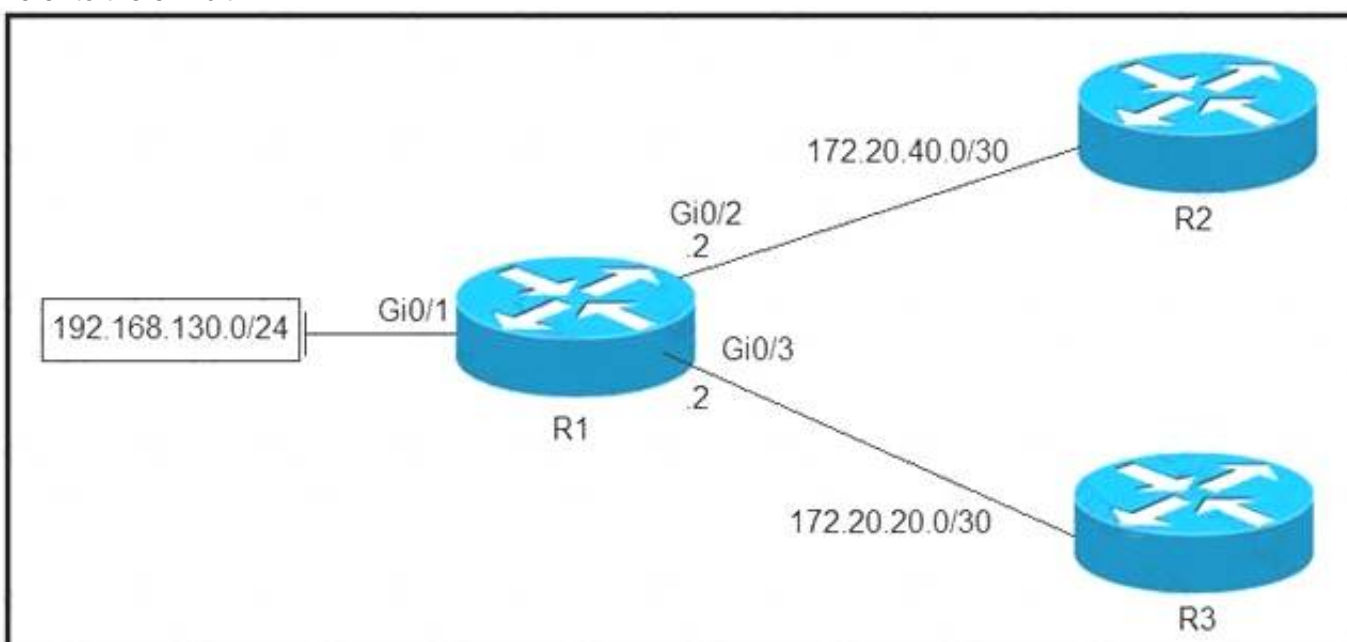
Which configuration adds an IPv4 interface to an OSPFv3 process in OSPFv3 address family configuration?

- A. router ospfv3 1 address-family ipv4
- B. Router(config-router)#ospfv3 1 ipv4 area 0
- C. Router(config-if)#ospfv3 1 ipv4 area 0
- D. router ospfv3 1 address-family ipv4 unicast

**Answer: B**

#### NEW QUESTION 6

Refer to the exhibit.



Which configuration configures a policy on R1 to forward any traffic that is sourced from the 192.168.130.0/24 network to R2?

- A. `access-list 1 permit 192.168.130.0 0.0.0.255`  
!  
`interface Gi0/2`  
`ip policy route-map test`  
!  
`route-map test permit 10`  
`match ip address 1`  
`set ip next-hop 172.20.20.2`
- B. `access-list 1 permit 192.168.130.0 0.0.0.255`  
!  
`interface Gi0/1`  
`ip policy route-map test`  
!  
`route-map test permit 10`  
`match ip address 1`  
`set ip next-hop 172.20.40.2`
- C. `access-list 1 permit 192.168.130.0 0.0.0.255`  
!  
`interface Gi0/2`  
`ip policy route-map test`  
!  
`route-map test permit 10`  
`match ip address 1`  
`set ip next-hop 172.20.20.1`
- D. `access-list 1 permit 192.168.130.0 0.0.0.255`  
!  
`interface Gi0/1`  
`ip policy route-map test`  
!  
`route-map test permit 10`  
`match ip address 1`  
`set ip next-hop 172.20.40.1`

- A. Option A  
B. Option B  
C. Option C  
D. Option D

**Answer:** D

#### NEW QUESTION 7

Drag and drop the MPLS terms from the left onto the correct definitions on the right.

PE	device that forwards traffic based on labels
P	path that the labeled packet takes
CE	device that is unaware of MPLS labeling
LSP	device that removes and adds the MPLS labeling

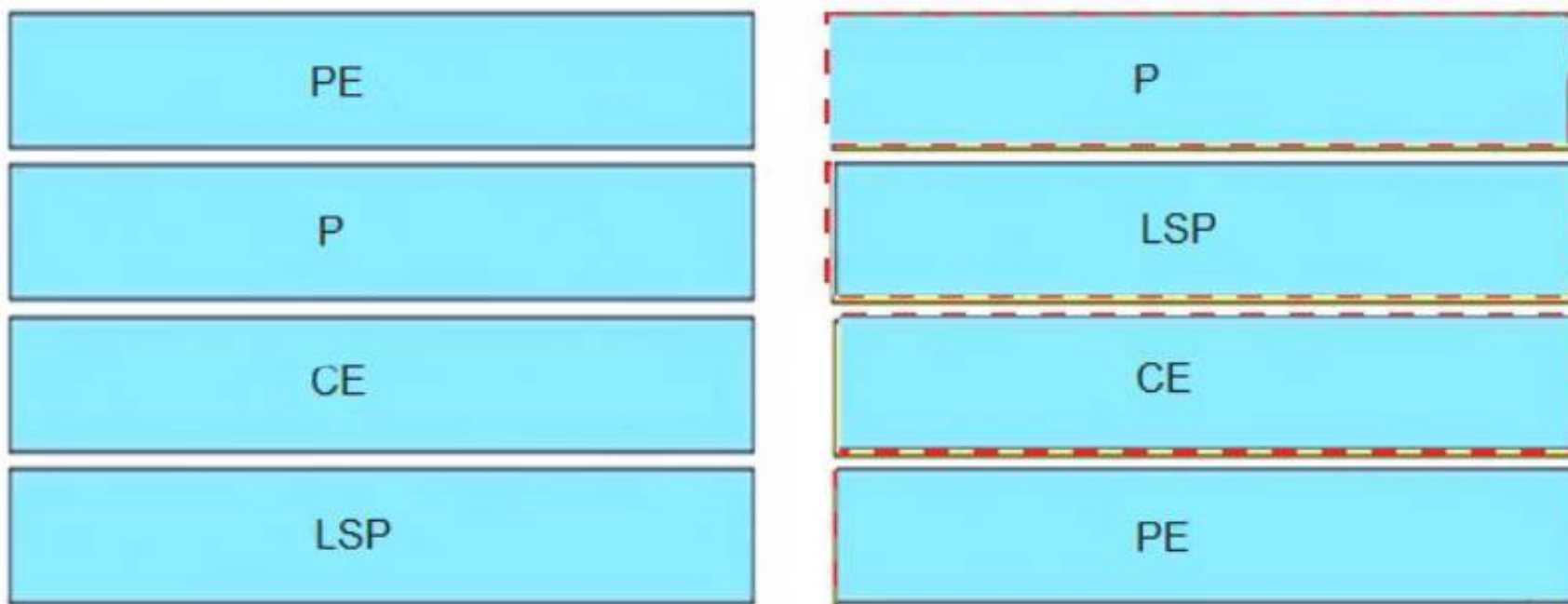
A. Mastered



B. Not Mastered

**Answer:** A

**Explanation:**



#### NEW QUESTION 8

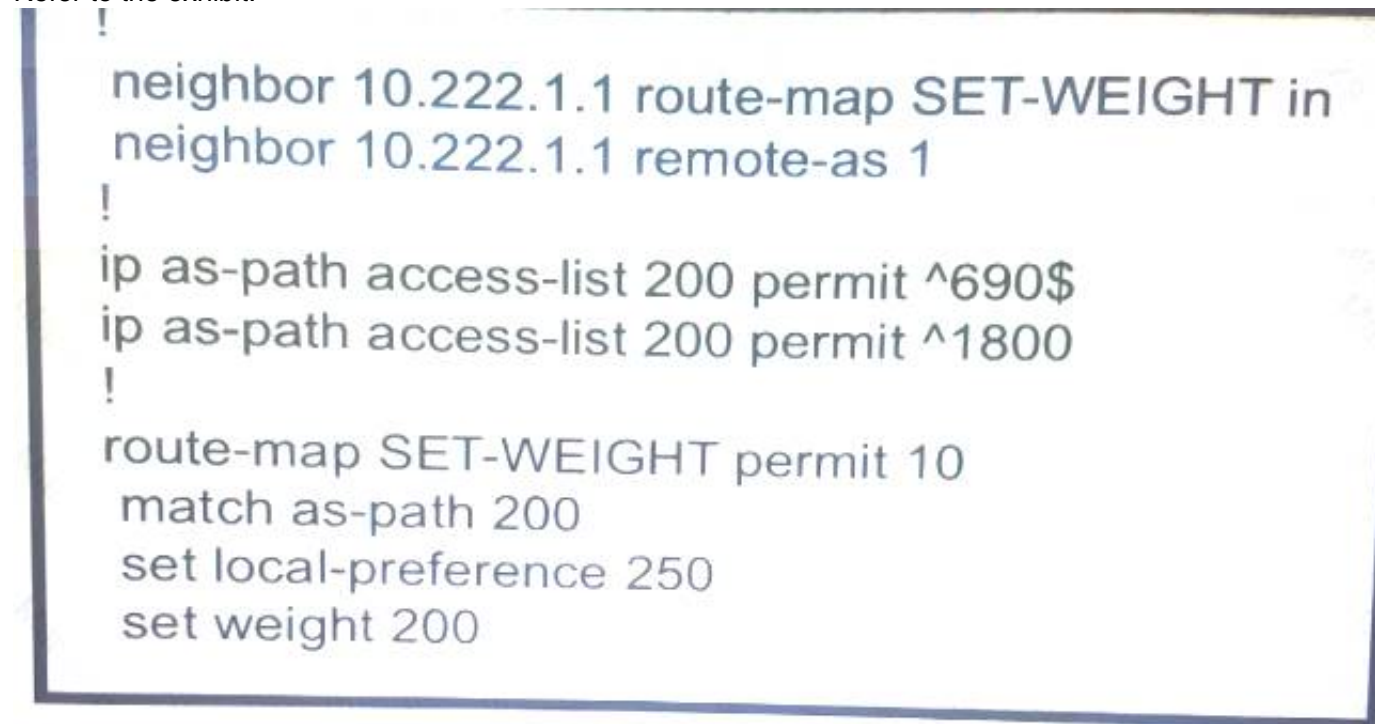
When provisioning a device in Cisco DNA Center, the engineer sees the error message “Cannot select the device. Not compatible with template”. What is the reason for the error?

- A. The template has an incorrect configuration.
- B. The software version of the template is different from the software version of the device.
- C. The changes to the template were not committed.
- D. The tag that was used to filter the templates does not match the device tag.

**Answer:** B

#### NEW QUESTION 9

Refer to the exhibit.



A router receiving BGP routing updates from multiple neighbors for routers in AS 690. What is the reason that the router still sends traffic that is destined to AS 690 to a neighbor other than 10.222.1.1?

- A. The local preference value in another neighbor statement is higher than 250.
- B. The local preference value should be set to the same value as the weight in the route map.
- C. The route map is applied in the wrong direction.
- D. The weight value in another statement is higher than 200.

**Answer:** D

#### NEW QUESTION 10

While troubleshooting connectivity issues to a router, these details are noticed:

- Standard pings to all router interfaces, including loopbacks, are successful.
- Data traffic is unaffected.
- SNMP connectivity is intermittent.
- SSH is either slow or disconnects frequently.

Which command must be configured first to troubleshoot this issue?

- A. show policy-map control-plane
- B. show policy-map
- C. show interface | inc drop
- D. show ip route

**Answer:** A

#### NEW QUESTION 10

Refer to the exhibit.

```
snmp-server community ciscotest1
snmp-server host 192.168.1.128 ciscotest
snmp-sever enable traps bgp
```

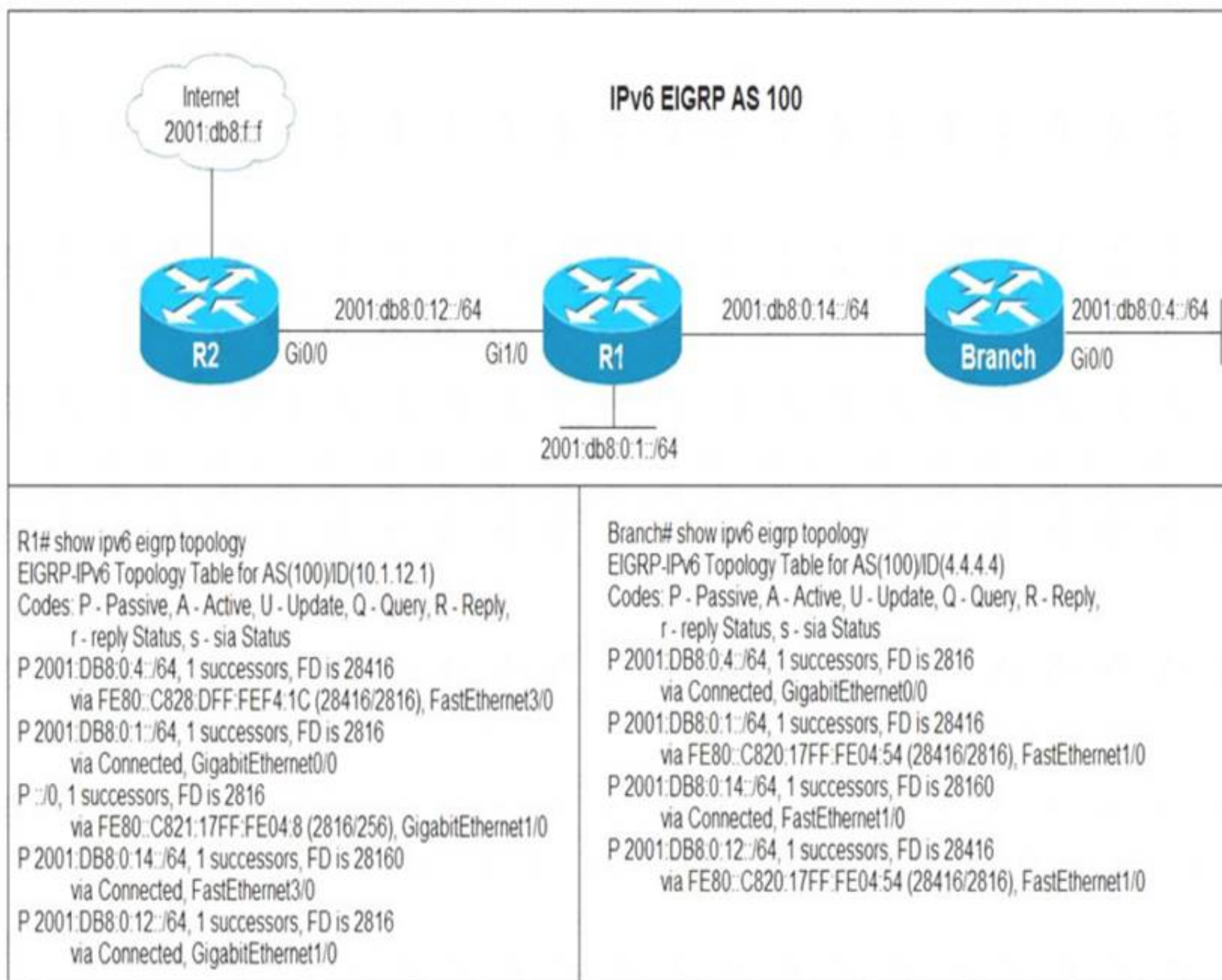
Network operations cannot read or write any configuration on the device with this configuration from the operations subnet. Which two configurations fix the issue? (Choose two.)

- A. Configure SNMP rw permission in addition to community ciscotest.
- B. Modify access list 1 and allow operations subnet in the access list.
- C. Modify access list 1 and allow SNMP in the access list.
- D. Configure SNMP rw permission in addition to version 1.
- E. Configure SNMP rw permission in addition to community ciscotest 1.

**Answer:** AB

#### NEW QUESTION 11

Refer to the exhibit.



Users in the branch network of 2001:db8:0:4::/64 report that they cannot access the Internet. Which command is issued in IPv6 router EIGRP 100 configuration mode to solve this issue?

- A. Issue the eigrp stub command on R1.
- B. Issue the no eigrp stub command on R1.
- C. Issue the eigrp stub command on R2.
- D. Issue the no eigrp stub command on R2.

**Answer:** A

#### NEW QUESTION 14

Refer to the exhibit.

```
Router#show running-config | include ip route
ip route 192.168.2.2 255.255.255.255 209.165.200.225 130
Router#show ip route

<output omitted>

Gateway of last resort is not set

    192.168.1.0/32 is subnetted, 1 subnets
C       192.168.1.1 is directly connected, Loopback0
    192.168.2.0/32 is subnetted, 1 subnets
O       192.168.2.2[110/11] via 192.168.12.2, 00:52:09, Ethernet0/0
    192.168.12.0/24 is variably subnetted, 2 subnets, 2 masks
C       192.168.12.0/24 is directly connected, Ethernet0/0
L       192.168.12.1/32 is directly connected, Ethernet0/0
    209.165.200.0/24 is variably subnetted, 2 subnets, 2 masks
C       209.165.200.0/24 is directly connected, Ethernet0/1
        209.165.200.226/32 is directly connected, Ethernet0/1
```

An engineer configures a static route on a router, but when the engineer checks the route to the destination, a different next hop is chosen. What is the reason for this?

- A. Dynamic routing protocols always have priority over static routes.
- B. The metric of the OSPF route is lower than the metric of the static route.
- C. The configured AD for the static route is higher than the AD of OSPF.
- D. The syntax of the static route is not valid, so the route is not considered.

**Answer:** C

#### NEW QUESTION 18

Which protocol is used to determine the NBMA address on the other end of a tunnel when mGRE is used?

- A. NHRP
- B. IPsec
- C. MP-BGP
- D. OSPF

**Answer:** D

#### NEW QUESTION 23

Which statement about IPv6 RA Guard is true?

- A. It does not offer protection in environments where IPv6 traffic is tunneled.
- B. It cannot be configured on a switch port interface in the ingress direction.
- C. Packets that are dropped by IPv6 RA Guard cannot be spanned.
- D. It is not supported in hardware when TCAM is programmed.

**Answer:** A

#### NEW QUESTION 27

Refer to the exhibit.



```
Router#show access-lists
Standard IP access list 1
  10 permit 192.168.2.2 (1 match)
Router#
Router#show route-map
route-map RM-OSPF-DL, permit, sequence 10
Match clauses:
  ip address (access-lists): 1
Set clauses:
Policy routing matches: 0 packets, 0 bytes
Router#
Router#show running-config | section ospf
router ospf 1
 network 192.168.1.1 0.0.0.0 area 0
 network 192.168.12.0 0.0.0.255 area 0
 distribute-list route-map RM-OSPF-DL in
Router#
```

An engineer is trying to block the route to 192.168.2.2 from the routing table by using the configuration that is shown. The route is still present in the routing table as an OSPF route. Which action blocks the route?

- A. Use an extended access list instead of a standard access list.
- B. Change sequence 10 in the route-map command from permit to deny.
- C. Use a prefix list instead of an access list in the route map.
- D. Add this statement to the route map: route-map RM-OSPF-DL deny 20.

**Answer: B**

#### NEW QUESTION 30

Refer to the exhibit.

```
Cat3850-Stack-2# show policy-map

Policy Map LIMIT_BGP
Class BGP
 drop

Policy Map SHAPE_BGP
Class BGP
 Average Rate Traffic Shaping
  cir 10000000 (bps)

Policy Map POLICE_BGP
Class BGP
 police cir 1000k bc 1500
 conform-action transmit
 exceed-action transmit

Policy Map COPP
Class BGP
 police cir 1000k bc 1500
 conform-action transmit
 exceed-action drop
```

Which control plane policy limits BGP traffic that is destined to the CPU to 1 Mbps and ignores BGP traffic that is sent at higher rate?

- A. policy-map SHAPE\_BGP
- B. policy-map LIMIT\_BGP
- C. policy-map POLICE\_BGP
- D. policy-map COPP

**Answer: D**

#### NEW QUESTION 32

Drag and drop the OSPF adjacency states from the left onto the correct descriptions on the right.



Init	Each router compares the DBD packets that were received from the other router.
2-way	Routers exchange information with other routers in the multiaccess network.
Down	The neighboring router requests the other routers to send missing entries.
Exchange	The network has already elected a DR and a backup BDR.
ExStart	The OSPF router ID of the receiving router was not contained in the hello message.
Loading	No hellos have been received from a neighbor router.

- A. Mastered  
B. Not Mastered

**Answer: A**

**Explanation:**

Init	Exchange
2-way	2-way
Down	Loading
Exchange	ExStart
ExStart	Init
Loading	Down

**NEW QUESTION 34**

.....

## Thank You for Trying Our Product

\* 100% Pass or Money Back

All our products come with a 90-day Money Back Guarantee.

\* One year free update

You can enjoy free update one year. 24x7 online support.

\* Trusted by Millions

We currently serve more than 30,000,000 customers.

\* Shop Securely

All transactions are protected by VeriSign!

**100% Pass Your 300-410 Exam with Our Prep Materials Via below:**

<https://www.certleader.com/300-410-dumps.html>