

## Exam Questions HPE6-A72

Aruba Certified Switching Associate Exam

<https://www.2passeasy.com/dumps/HPE6-A72/>



### NEW QUESTION 1

DRAG DROP

Match the switching term to the correct definition.

Term		Definition
Broadcast Domain		defines the group of devices that are on the same network segment that are capable of receiving and responding to frames destined to FF:FF:FF:FF:FF:FF
Collision Domain		the FIB used by switches matching known-source mac-addresses to the layer one port they are learned on
CSMA/CD		the mechanism used by Compute NICs and Switchports operating in half-duplex to detect and recover from frame collisions
Forwarding Table		the segment of a network connected by a shared medium, such as a hub, that is affected when two or more frames are sent at the same time

- A. Mastered
- B. Not Mastered

Answer: A

Explanation:

Term		Definition
Broadcast Domain	Broadcast Domain	defines the group of devices that are on the same network segment that are capable of receiving and responding to frames destined to FF:FF:FF:FF:FF:FF
Collision Domain		the FIB used by switches matching known-source mac-addresses to the layer one port they are learned on
CSMA/CD		the mechanism used by Compute NICs and Switchports operating in half-duplex to detect and recover from frame collisions
Forwarding Table	Forwarding Table	the segment of a network connected by a shared medium, such as a hub, that is affected when two or more frames are sent at the same time

### NEW QUESTION 2

What is the correct description of a Multi- Layer Switch?

- A. a switch with Layer 3 routing capabilities but lacks any Layer 1 features as a consequence
- B. any switch that supports PoE, LLDP-MED and Flow Control
- C. has all the functionality of a Layer 2 switch and most of the functionality of a Layer 3 router
- D. multi-Layer refers specifically to using chassis switches with several line cards over stack port switches

Answer: C

### NEW QUESTION 3

What is true about VSX? (Choose two.)

- A. VSX is ideal for Campus access layer deployments where ease of deployment is needed.
- B. VSX allows upgrading members with near zero downtime or loss of packets.
- C. VSX is available on all Aruba OS-CX switches except the 6300F model.
- D. VSX is implemented on static port switch
- E. VSX-plus needed to stack chassis together.
- F. VSX run separate control planes to reduce latency and improve performance.

Answer: BE

#### NEW QUESTION 4

Refer to the exhibit.



The Aruba 8400 in the exhibit is member 2 of a VSX stack.

Which command will enter the interface sub configuration mode for the port, indicated by the orange square?

- A. 8400(config)# interface 2/4/15
- B. 8400(config)# interface 1/7/16
- C. 8400(config)# interface 1/4/15
- D. 8400(config)# interface 2/3/17

**Answer:** A

#### NEW QUESTION 5

Which two options are the Layer 3 Routing protocols? (Choose two.)

- A. BGP
- B. LLDP
- C. OSPF
- D. MPLS
- E. 802.3ad

**Answer:** AC

#### NEW QUESTION 6

What are two primary concerns regarding layer two loops in a redundant topology? (Choose two.)

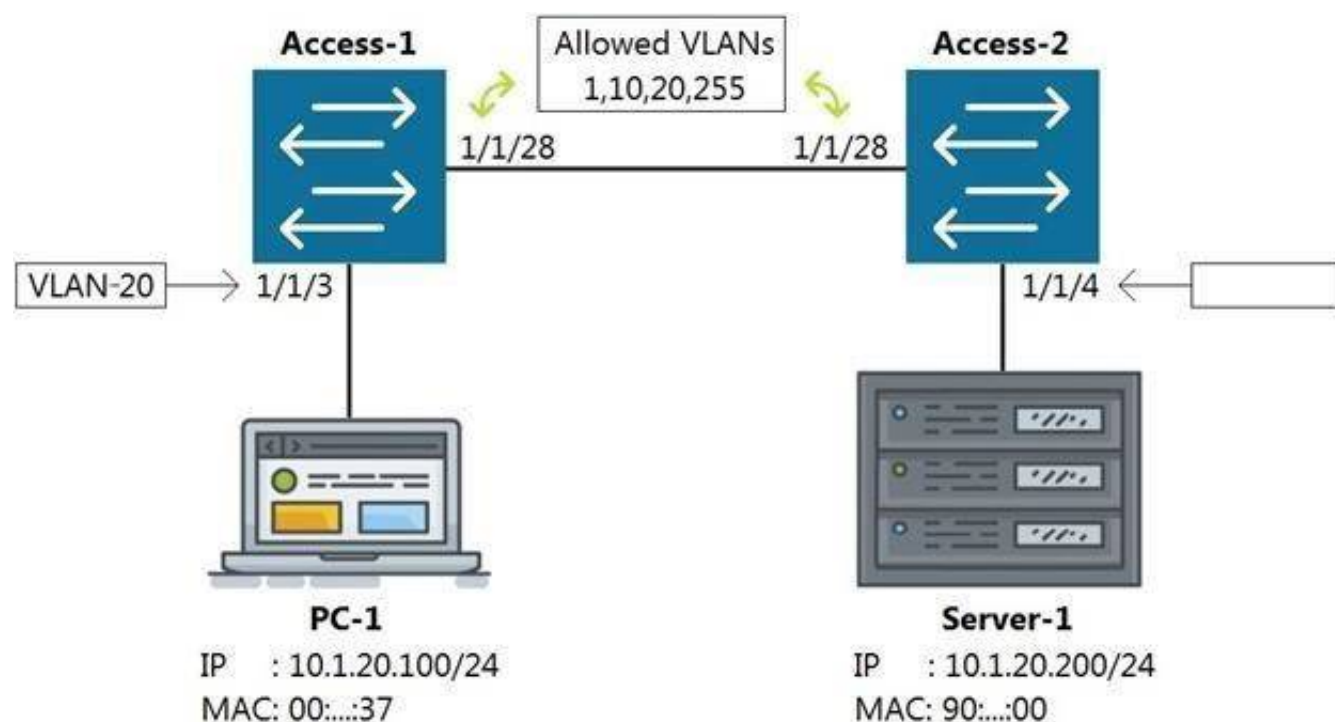
- A. routing loops
- B. costs associated with upgrading from copper to fiber
- C. multiple frame copies leading to instability of the MAC address table
- D. security issues with a redundant loop indicating to hackers that a back-door exists
- E. broadcast storms

**Answer:** CD

#### NEW QUESTION 7

Refer to the exhibit





Which command on Access-2 port 1/1/4 will enable connectivity between PC-1 and Server-1 without any routing enabled in the network?

- A. Access-2 (config-if-1/1/4)# vlan access 1, 10, 20, 255
- B. Access-2 (config-if-1/1/4)# vlan access 20
- C. Access-2 (config-if-1/1/4)# vlan 20 untag 1/1/4
- D. Access-2 (config-if-1/1/4)# vlan trunk allow 1, 10, 255

**Answer: B**

#### NEW QUESTION 8

Which statement is correct regarding powering an Aruba Access Point?

- A. PoE or PoE+ is only used with Ethernet that is carried over multi-mode fiber cabling.
- B. Using switchports for this reason is unnecessary, because Aruba Access Points typically use an AC to DC power adapter to draw power.
- C. PoE or PoE+ enabled switchports are rarely used given concerns about causing electrical interference, with the data also carried over Ethernet cabling.
- D. Most administrators use PoE or PoE+ enabled switchports to provide both Ethernet connectivity and power to the AP.

**Answer: D**

#### NEW QUESTION 9

What is a benefit of choosing a 3-Tier design with routing at the Aggregation layer?

- A. Better Core router performance by offloading processing
- B. Shifting endpoint access to the Aggregation layer from the Access layer
- C. Using access control lists (ACLs) at the Core to improve performance
- D. Connecting WAN/MPLS and Data center access to the Aggregation layer

**Answer: A**

#### NEW QUESTION 10

Refer to the exhibit.

T11-Access-2# show lldp configuration

#### LLDP Global Configuration

=====

```
LLDP Enabled           : Yes
LLDP Transmit Interval : 30
LLDP Hold Time Multiplier : 4
LLDP Transmit Delay Interval : 2
LLDP Reinit Time Interval : 2
```

#### TLVs Advertised

=====

Management Address

Port Description

Port VLAN-ID

System Capabilities

System Description

System Name

OUI

#### LLDP Port Configuration

=====

PORT	TX-ENABLED	RX-ENABLED
1/1/1	Yes	Yes
1/1/2	Yes	Yes
<--- output omitted --->		
1/1/27	Yes	Yes
1/1/28	Yes	Yes

What configuration is needed in order for "show LLDP configuration" to show this output?

- A. none; LLDP is enabled by default on Aruba switches
- B. configuring LLDP both globally and on the interfaces
- C. enabling LLDP on the interfaces only
- D. configuring LLDP globally only

**Answer:** A

#### NEW QUESTION 10

Refer to the exhibit.

VLAN	Name	Mode	Mapping
1	DEFAULT_VLAN_1	native-untagged	port
10	Sales	trunk	port
20	Service	trunk	port
30	Customer	trunk	port

Which command produces the above output?

- A. show interface port 1/1/10 trunk
- B. show vlan port 1/1/10
- C. show trunk port 1/1/10 extended
- D. show interface port 1/1/10 switchport

**Answer:** C

#### NEW QUESTION 14

Which two statements are true regarding Checkpoints on Aruba switches? (Choose two.)

- A. Rolling back to a prior checkpoint triggers a reboot of the switch.
- B. Stacking switches using VSF or VSX will disable the Checkpoint feature.
- C. A checkpoint is a snapshot of the running-configuration and relevant metadata at the time the checkpoint was created.
- D. System-generated checkpoints are created after a configuration change and 5 minutes of inactivity.
- E. Checkpoints are available on AOS 5400R switches, as well as on all AOS-CX switches.

**Answer:** CE

#### NEW QUESTION 15

The customer has 778 developers testing computer games on the network.

Which two actions resolve Broadcast storms? (Choose two.)

- A. Manually disable the redundant link to immediately resolve the impacted portion of the network.

- B. Utilize Spanning Tree to dynamically disable all redundant links in a segment.
- C. Setting switch ports to half-duplex will resolve Broadcast storms using Carrier Sense Multiple-Access Collision Detection (CSMA/CD).
- D. Enable single Area Open Shortest Path First (OSPF) on all Layer 2 switches, but do not enable routing.
- E. Utilize Spanning Tree to dynamically block Designated ports in addition to Alternate ports.

**Answer:** AB

#### NEW QUESTION 18

Interface 1/1/1 is up  
 Admin state is up  
 Link transitions: 1  
 Description: TO\_PC-1  
 Hardware: Ethernet, MAC Address: 00:11:22:33:44:55  
 MTU 1500  
 Type 1GbT Full-  
 duplex qos  
 trust none  
 Speed 1000 Mb/s  
 Auto-negotiation is on  
 Flow-control: off  
 Error-control: off  
 MDI mode: MDIX  
 VLAN Mode: access  
 Access VLAN: 1111  
 Which command will produce the above output?

- A. show interface vlan 1111
- B. show interface 1/1/1
- C. show interface gigabit 1/1/1
- D. show vlan 1111

**Answer:** B

#### NEW QUESTION 21

Refer to the exhibit.

```
watchlog/3      0      0      0
dbus-daemon     0      0      15
intfd           0      0      11
ext4-rsv-conver 0      0      0
scsi_eh_6        0      0      0
cpuhp/3         0      0      0
kworker/4:0      0      0      0
scsi_tmf_4       0      0      0
kworker/5:1H    0      0      0
smartd          0      0      3
fault-handlerd  0      0      10
btd             0      0      12
portd           0      0      12
migration/4     0      0      0
scsi_tmf_1       0      0      0
kworker/2:0H    0      0      0
kauditd         0      0      0
rmond           0      0      9
certmgr         0      0      13
icmp6_unreachab 0      0      0
Core-1#
```

The above output is the result of issuing the command show system resource-utilization. What command should be used to enable terminal output line by line or page by page?

- A. The command page
- B. The command terminal length 30
- C. The command more
- D. The command less

**Answer:** A

#### NEW QUESTION 26

Refer to the exhibit.





You are in the process of configuring VSF between Access-1 and Access-2. Access-1 has been configured as the VSF Master. What is a valid configuration for Access-2 to join the VSF stack?

- A. Access-2# configureAccess-2(config)# vsf member 1 Access-2(config)# vsf renumber-to 2 Access-2(vsf-member-1)# link 2 2/1/28 Access-2(vsf-member-1)# exitThis will save the VSF configuration and reboot the switch
- B. Do you want to continue (y/n)? y
- C. Access-2# configureAccess-2(config)# vsf member 2 Access-2(vsf-member-1)# link 2 1/1/28 Access-2(vsf-member-1)# exitThis will save the VSF configuration and reboot the switch
- D. Do you want to continue (y/n)? y
- E. Access-2# configureAccess-2(config)# vsf member 2 Access-2(vsf-member-1)# link 1 1/1/28 Access-2(vsf-member-1)# exitThis will save the VSF configuration and reboot the switch.Do you want to continue (y/n)? y
- F. Access-2# configureAccess-2(config)# vsf member 1 Access-2(vsf-member-1)# link 1 1/1/28 Access-2(vsf-member-1)# exitAccess-2(config)# vsf renumber-to 2This will save the VSF configuration and reboot the switc
- G. Do you want to continue (y/n)? y

Answer: C

#### NEW QUESTION 29

DRAG DROP

Match each description to the correct management tool for Aruba AOS-CX.

Select and Place:

Management Tools	Answer Area	
Management Tool	Description	
NetEdit	can run as an OVA	
Aruba CX Mobile App	requires AOS-CX switches to support HTTPS, SSH, and REST access	
	connects to switches via Bluetooth or Wi-Fi	
	includes a feature for stacking automation	
	supports SNMPv2c to discover third-party devices	

- A. Mastered
- B. Not Mastered

Answer: A

Explanation:

Management Tools	Answer Area	
Management Tool	Description	
NetEdit	can run as an OVA	
NetEdit	requires AOS-CX switches to support HTTPS, SSH, and REST access	
Aruba CX Mobile App	connects to switches via Bluetooth or Wi-Fi	
Aruba CX Mobile App	includes a feature for stacking automation	
NetEdit	supports SNMPv2c to discover third-party devices	

#### NEW QUESTION 32

Refer to the exhibit

```
Access-1(config)# show vlan
```

VLAN	Name	Status	Reason	Type	Interfaces
1	DEFAULT_VLAN_1	up	ok	default	1/1/1-1/1/28
50	Engineering	down	no_member_port	static	

What is true regarding VLAN 50 according to the diagram above?

- A. VLAN 50 is part of a switched virtual interface (SVI) that was never routed causing it to be down.

- B. Since VLAN 50 has not been assigned to any enabled physical port, the status is down.  
 C. VLAN 50 is assigned only to Trunk ports which is why no ports are listed under interfaces.  
 D. VLAN 50 was never added to the vlan-database and therefore is in a down state.

**Answer:** B

#### NEW QUESTION 34

DRAG DROP

Match the term to the correct description.

Term		Description
BGP		used for creating backup routes by implementing a higher administrative distance
Floating Static Routes		a distance vector protocol
OSPFv2		an ipv4 link-state routing protocol that runs within an Autonomous System
OSPFv3		used to route traffic between Autonomous Systems
RIPv2		a routing protocol capable of routing IPv6 packets

- A. Mastered  
 B. Not Mastered

**Answer:** A

**Explanation:**

Term		Description
BGP	Floating Static Routes	used for creating backup routes by implementing a higher administrative distance
Floating Static Routes	RIPv2	a distance vector protocol
OSPFv2	OSPFv2	an ipv4 link-state routing protocol that runs within an Autonomous System
OSPFv3	BGP	used to route traffic between Autonomous Systems
RIPv2	OSPFv3	a routing protocol capable of routing IPv6 packets

#### NEW QUESTION 37

What are two mechanisms supported on AOS-CX 6300 switches used in Multi-active Detection to determine the status of the Primary member? (Choose two.)

- A. Management interface split detection  
 B. Peer switch-based detection  
 C. Loopback keepalives  
 D. ARP-based  
 E. BFD

**Answer:** AD

#### NEW QUESTION 39

Which port or ports should be allowed through a firewall so that an AOS-CX switch can act as an SNMP Agent?

- A. UDP 1812 and UDP 1813  
 B. UDP 161  
 C. TCP 443  
 D. UDP 162

**Answer:** B



NEW QUESTION 42

Refer to the exhibit.

```
SW1# show vlan
```

VLAN	Name	Status	Reason	Type	Interfaces
1	DEFAULT_VLAN_1	up	ok	default	<output omitted>
10	Engineering	up	ok	static	1/1/1-1/1/7
20	Guest	up	ok	static	1/1/11-1/1/14

The above command was applied to an Aruba AOS-CX 6300M 24-port switch with 4-port SFP56 uplinks. All ports are set as access switchports. Which ports carry VLAN 1 traffic?

- A. 1/1/8, 1/1/10, 1/1/5-1/1/24
- B. 1/1/1-1/1/28
- C. 1/1/1-1/1/24
- D. 1/1/8-1/1/10, 1/1/5-1/1/28

Answer: D

NEW QUESTION 45

DRAG DROP

Match the available stacking feature to the correct AOS-CX switch model. Stacking features may be used more than once. Select and Place:

Stacking Feature

VSF

VSX

Answer Area

Stacking Feature	AOS-CX Switch Model
	6300M
	6300F
	8320
	8400
	6400

- A. Mastered
- B. Not Mastered

Answer: A

Explanation:

Stacking Feature

VSF

VSX

Answer Area

Stacking Feature	AOS-CX Switch Model
VSF	6300M
VSF	6300F
VSX	8320
VSX	8400
VSX	6400

NEW QUESTION 50

Which two options are correct regarding the IEEE 802.11ax standard? (Choose two.)

- A. allows transmissions of up to 4.8Gbps
- B. is an emerging satellite connection standard to allow wireless access anywhere in the world
- C. operates only in the 5GHz similar to 802.11ac
- D. operates in both the 2.4GHz and 5GHz radios bands
- E. is the first WLAN standard to no longer use electromagnetic signals to transmit data

**Answer:** AD

#### NEW QUESTION 52

.....

## THANKS FOR TRYING THE DEMO OF OUR PRODUCT

Visit Our Site to Purchase the Full Set of Actual HPE6-A72 Exam Questions With Answers.

We Also Provide Practice Exam Software That Simulates Real Exam Environment And Has Many Self-Assessment Features. Order the HPE6-A72 Product From:

<https://www.2passeasy.com/dumps/HPE6-A72/>

## Money Back Guarantee

### HPE6-A72 Practice Exam Features:

- \* HPE6-A72 Questions and Answers Updated Frequently
- \* HPE6-A72 Practice Questions Verified by Expert Senior Certified Staff
- \* HPE6-A72 Most Realistic Questions that Guarantee you a Pass on Your FirstTry
- \* HPE6-A72 Practice Test Questions in Multiple Choice Formats and Updatesfor 1 Year