



**Cisco**

## **Exam Questions 200-301**

Cisco Certified Network Associate

#### NEW QUESTION 1

What are two benefits of network automation? (Choose two)

- A. reduced operational costs
- B. reduced hardware footprint
- C. faster changes with more reliable results
- D. fewer network failures
- E. increased network security

**Answer:** AC

#### NEW QUESTION 2

Which design element is a best practice when deploying an 802.11b wireless infrastructure?

- A. disabling TPC so that access points can negotiate signal levels with their attached wireless devices.
- B. setting the maximum data rate to 54 Mbps on the Cisco Wireless LAN Controller
- C. allocating nonoverlapping channels to access points that are in close physical proximity to one another
- D. configuring access points to provide clients with a maximum of 5 Mbps

**Answer:** C

#### NEW QUESTION 3

Which option about JSON is true?

- A. uses predefined tags or angle brackets () to delimit markup text
- B. used to describe structured data that includes arrays
- C. used for storing information
- D. similar to HTML, it is more verbose than XML

**Answer:** B

#### NEW QUESTION 4

Which IPv6 address type provides communication between subnets and cannot route on the Internet?

- A. global unicast
- B. unique local
- C. link-local
- D. multicast

**Answer:** B

#### NEW QUESTION 5

Which command prevents passwords from being stored in the configuration as plain text on a router or switch?

- A. enable secret
- B. service password-encryption
- C. username Cisco password encrypt
- D. enable password

**Answer:** B

#### NEW QUESTION 6

What are two southbound APIs? (Choose two )

- A. OpenFlow
- B. NETCONF
- C. Thrift
- D. CORBA
- E. DSC

**Answer:** CD

#### NEW QUESTION 7

Which set of action satisfy the requirement for multifactor authentication?

- A. The user swipes a key fob, then clicks through an email link
- B. The user enters a user name and password, and then clicks a notification in an authentication app on a mobile device
- C. The user enters a PIN into an RSA token, and then enters the displayed RSA key on a login screen
- D. The user enters a user name and password and then re-enters the credentials on a second screen

**Answer:** A

#### NEW QUESTION 8

netmask	must be unique
OSPF process ID	
router ID	must match
IP address	
area ID	
timers	

- A. Mastered
- B. Not Mastered

Answer: A

Explanation:

netmask	must be unique
OSPF process ID	
router ID	must match
IP address	
area ID	
timers	

NEW QUESTION 9

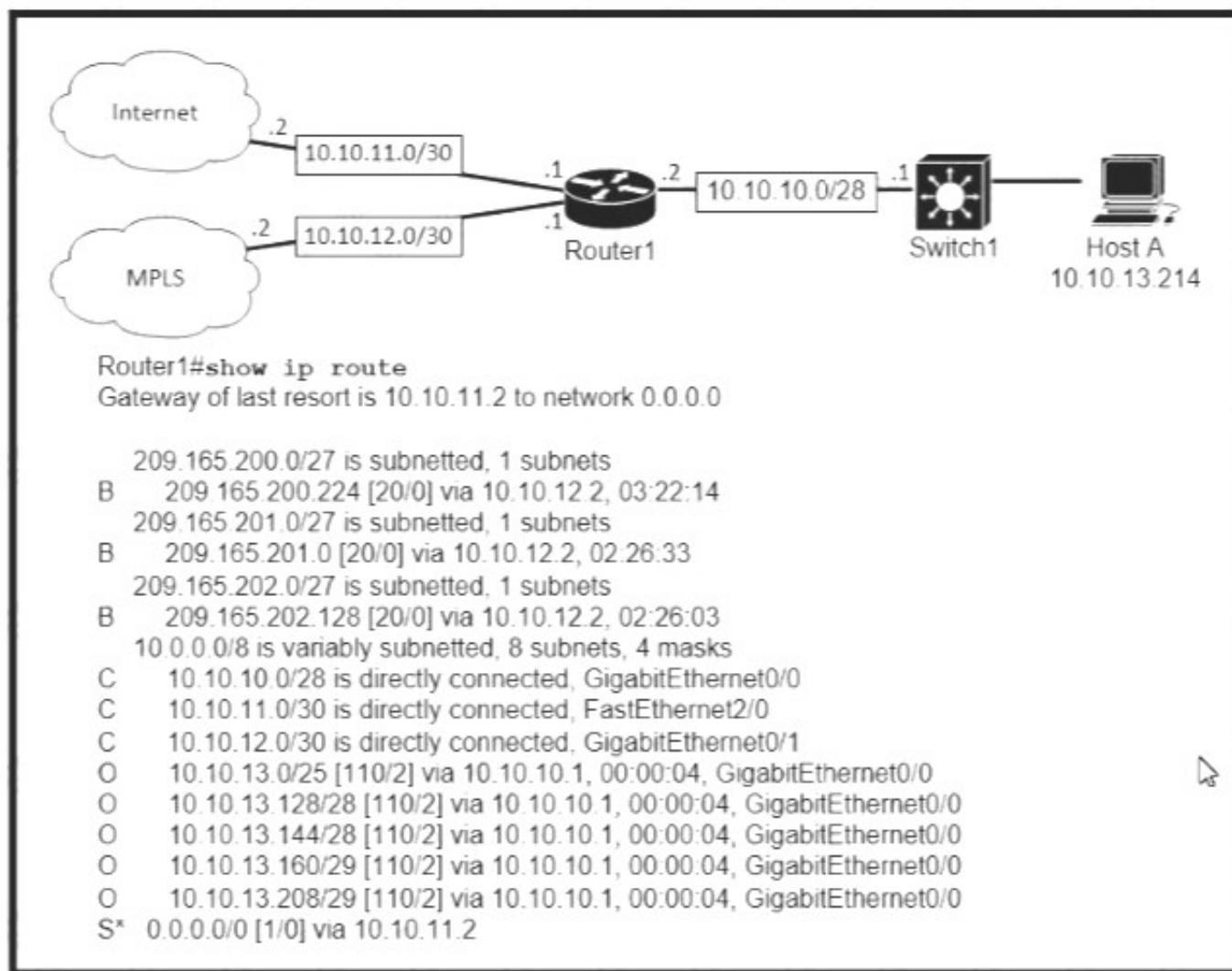
Which two must be met before SSH can operate normally on a Cisco IOS switch? (Choose two)

- A. The switch must be running a k9 (crypto) IOS image
- B. The Ip domain-name command must be configured on the switch
- C. IP routing must be enabled on the switch
- D. A console password must be configured on the switch
- E. Telnet must be disabled on the switch

Answer: BC

NEW QUESTION 10

Refer to the exhibit.



Which prefix does Router 1 use for traffic to Host A?

- A. 10.10.10.0/28
- B. 10.10.13.0/25
- C. 10.10.13.144/28
- D. 10.10.13.208/29

**Answer: C**

#### NEW QUESTION 10

How does HSRP provide first hop redundancy?

- A. It load-balances traffic by assigning the same metric value to more than one route to the same destination in the IP routing table.
- B. It load-balances Layer 2 traffic along the path by flooding traffic out all interfaces configured with the same VLAN.
- C. It forwards multiple packets to the same destination over different routed links in the data path
- D. It uses a shared virtual IP and a virtual MAC address to a group of routers that serve as the default gateway for hosts on a LAN

**Answer: C**

#### NEW QUESTION 11

A network engineer must back up 20 network router configurations globally within a customer environment. Which protocol allows the engineer to perform this function using the Cisco IOS MIB?

- A. CDP
- B. SNMP
- C. SMTP
- D. ARP

**Answer: C**

#### NEW QUESTION 12

Refer to the exhibit.

```

ip arp inspection vlan 2
interface fastethernet 0/1
 switchport mode access
 switchport access vlan 2
  
```

What is the effect of this configuration?

- A. The switch port interface trust state becomes untrusted
- B. The switch port remains administratively down until the interface is connected to another switch
- C. Dynamic ARP inspection is disabled because the ARP ACL is missing
- D. The switch port remains down until it is configured to trust or untrust incoming packets

**Answer: A**

#### NEW QUESTION 14

When OSPF learns multiple paths to a network, how does it select a route?

- A. It multiple the active K value by 256 to calculate the route with the lowest metric.
- B. For each existing interface, it adds the metric from the source router to the destination to calculate the route with the lowest bandwidth.
- C. It divides a reference bandwidth of 100 Mbps by the actual bandwidth of the existing interface to calculate the router with the lowest cost.
- D. It count the number of hops between the source router and the destination to determine the router with the lowest metric

**Answer:** A

#### NEW QUESTION 18

Refer to the exhibit.

```
Atlanta#conf t
Enter configuration commands, one per line. End with CNTL/Z.
Atlanta(config)#aaa new-model
Atlanta(config)#aaa authentication login default local
Atlanta(config)#line vty 0 4
Atlanta(config-line)#login authentication default
Atlanta(config-line)#exit
Atlanta(config)#username ciscoadmin password adminadmin123
Atlanta(config)#username ciscoadmin privilege 15
Atlanta(config)#enable password cisco123
Atlanta(config)#enable secret testing1234
Atlanta(config)#end
```

Which password must an engineer use to enter the enable mode?

- A. adminadmin123
- B. default
- C. testing 1234
- D. cisco123

**Answer:** C

#### NEW QUESTION 20

Which configuration is needed to generate an RSA key for SSH on a router?

- A. Configure the version of SSH
- B. Configure VTY access.
- C. Create a user with a password.
- D. Assign a DNS domain name

**Answer:** B

#### NEW QUESTION 25

What is the primary different between AAA authentication and authorization?

- A. Authentication verifies a username and password, and authorization handles the communication between the authentication agent and the user database.
- B. Authentication identifies a user who is attempting to access a system, and authorization validates the users password
- C. Authentication identifies and verifies a user who is attempting to access a system, and authorization controls the tasks the user can perform.
- D. Authentication controls the system processes a user can access and authorization logs the activities the user initiates

**Answer:** C

#### NEW QUESTION 27

Refer to Exhibit.

```
SW2
vtp domain cisco
vtp mode transparent
vtp password ciscotest
interface fastethernet0/1
description connection to sw1
switchport mode trunk
switchport trunk encapsulation dot1q
```

How does SW2 interact with other switches in this VTP domain?

- A. It processes VTP updates from any VTP clients on the network on its access ports.
- B. It receives updates from all VTP servers and forwards all locally configured VLANs out all trunk ports
- C. It forwards only the VTP advertisements that it receives on its trunk ports.
- D. It transmits and processes VTP updates from any VTP Clients on the network on its trunk ports

**Answer:** C

#### NEW QUESTION 31

Which unified access point mode continues to serve wireless clients after losing connectivity to the Cisco Wireless LAN Controller?

- A. sniffer
- B. mesh
- C. flexconnect
- D. local



Answer: B

NEW QUESTION 36

Which two encoding methods are supported by REST APIs? (Choose two)

- A. YAML
- B. JSON
- C. EBCDIC
- D. SGML
- E. XML

Answer: AE

NEW QUESTION 39

Drag and drop the Cisco Wireless LAN Controller security settings from the left onto the correct security mechanism categories on the right.

web policy

Passthrough

WPA+WPA2

802.1X

Layer 2 Security Mechanisms

Layer 3 Security Mechanisms (for WLAN)

- A. Mastered
- B. Not Mastered

Answer: A

Explanation:

web policy

Passthrough

WPA+WPA2

802.1X

Layer 2 Security Mechanisms

Passthrough

802.1X

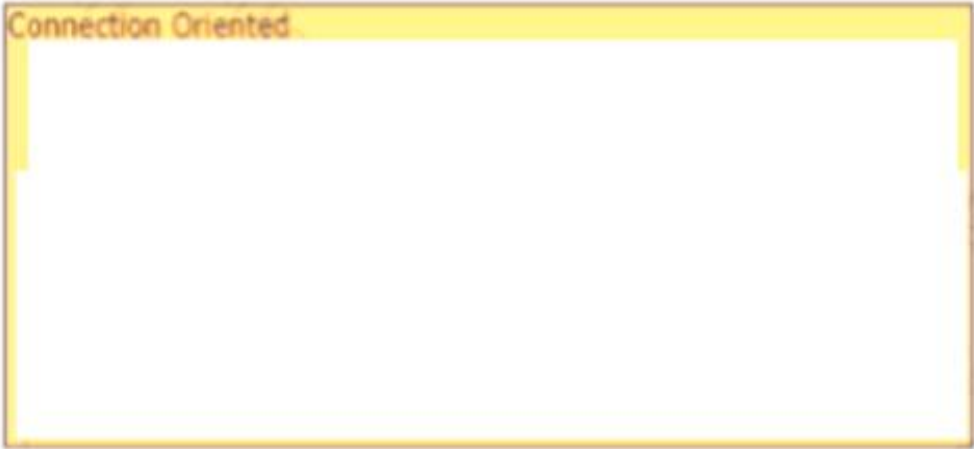
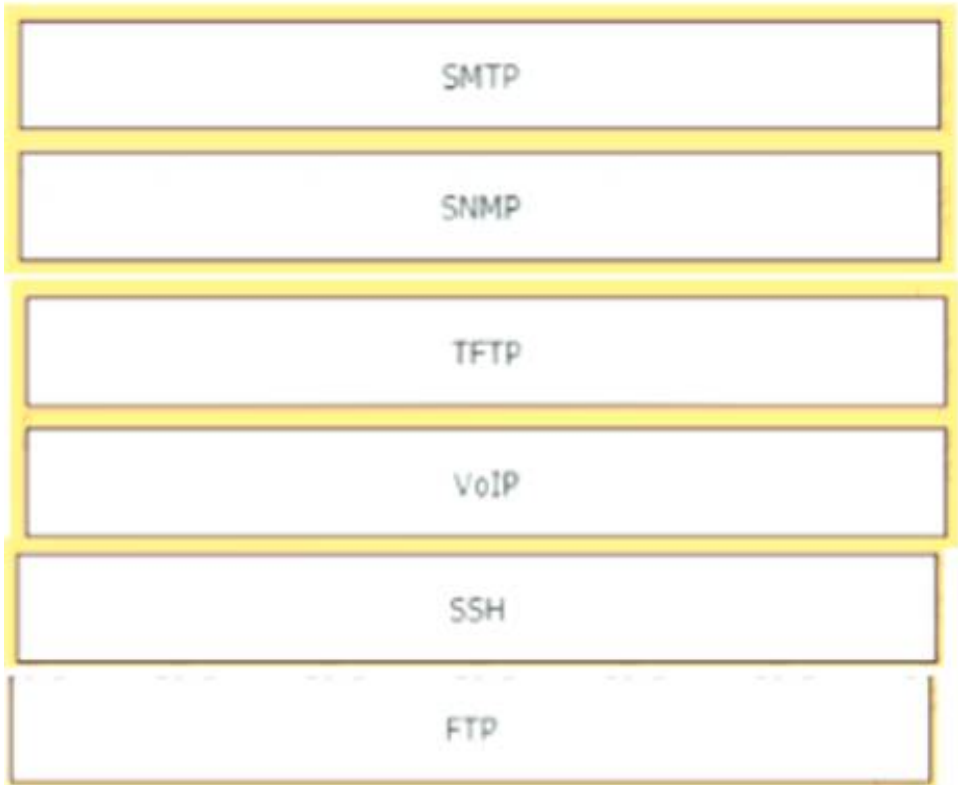
Layer 3 Security Mechanisms (for WLAN)

WPA+WPA2

web policy

NEW QUESTION 40

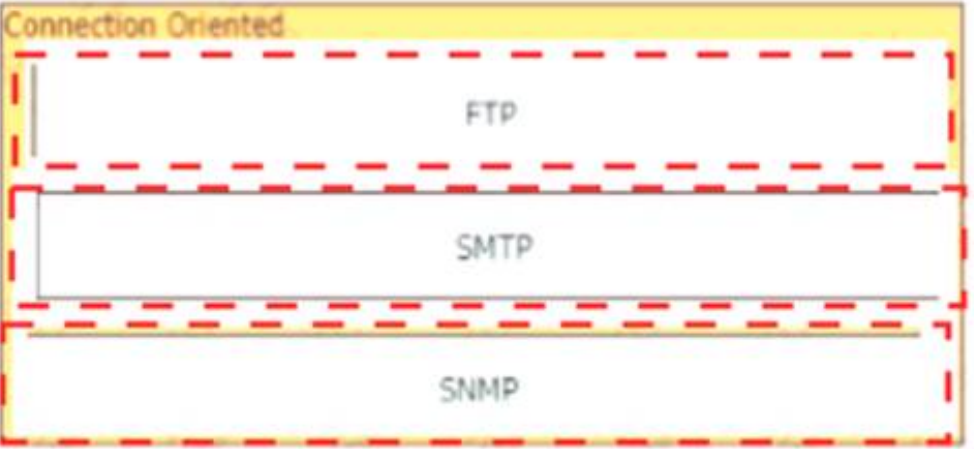
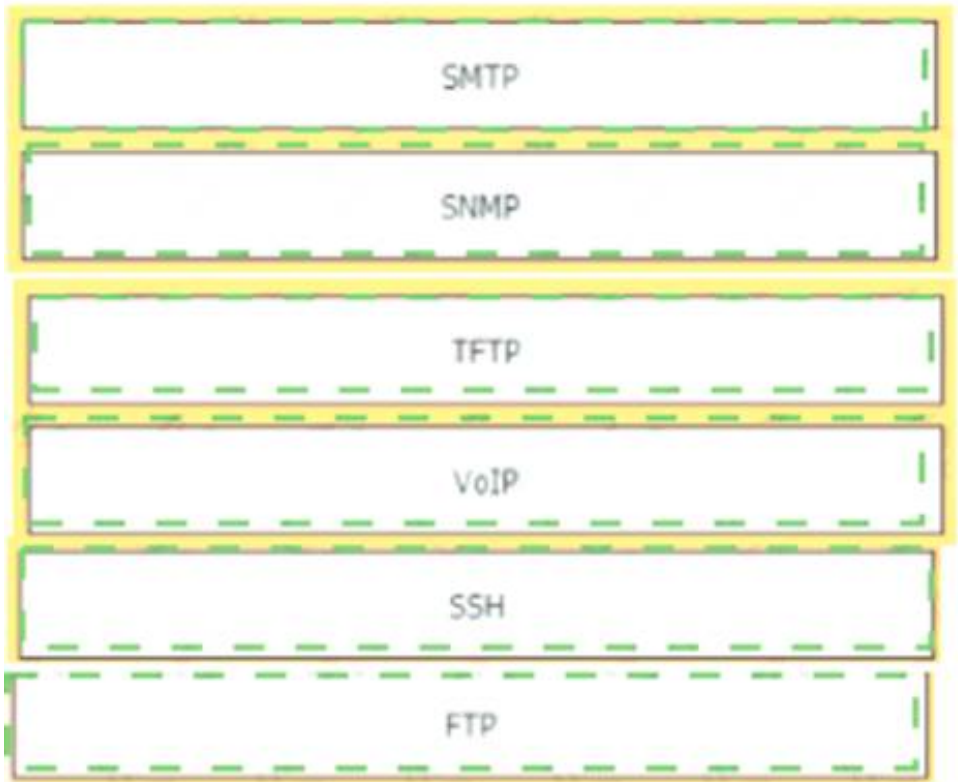
Drag and drop the network protocols from the left onto the correct transport services on the right.



- A. Mastered
- B. Not Mastered

Answer: A

Explanation:



NEW QUESTION 44

What is the primary effect of the spanning-tree portfast command?

- A. it enables BPDU messages
- B. It minimizes spanning-tree convergence time
- C. It immediately puts the port into the forwarding state when the switch is reloaded
- D. It immediately enables the port in the listening state

Answer: A

NEW QUESTION 48

Refer to the exhibit.

```
ip arp inspection vlan 5-10
interface fastethernet 0/1
  switchport mode access
  switchport access vlan 5
```

What is the effect of this configuration?

- A. All ARP packets are dropped by the switch
- B. Egress traffic is passed only if the destination is a DHCP server.
- C. All ingress and egress traffic is dropped because the interface is untrusted
- D. The switch discard all ingress ARP traffic with invalid MAC-to-IP address bindings.

**Answer:** D

#### NEW QUESTION 50

Refer to the exhibit.

```
R2#show ip nat translations
Pro Inside global      Inside local  Outside local  Outside global
tcp 172.23.104.3:43268  10.4.4.4:43268 172.23.103.10:23 172.23.103.10:23
tcp 172.23.104.4:45507  10.4.4.5:45507 172.23.103.10:80 172.23.103.10:80
```

An engineer configured NAT translations and has verified that the configuration is correct. Which IP address is the source IP?

- A. 10.4.4.4
- B. 10.4.4.5
- C. 172.23.103.10
- D. 172.23.104.4

**Answer:** C

#### NEW QUESTION 51

Refer to the exhibit.

```
[root@HostTest ~]# ip route
default via 192.168.1.193 dev eth1 proto static
192.168.1.0/26 dev eth1 proto kernel scope link src 192.168.1.200 metric 1

[root@HostTest ~]# ip addr show eth1
eth1: mtu 1500 qdisc pfifo_fast qlen 1000
    link/ether 00:0C:22:83:79:A3 brd ff:ff:ff:ff:ff:ff
    inet 192.168.1.200/26 brd 192.168.1.255 scope global eth1
    inet6 fe80::20c:29ff:fe89:79b3/64 scope link
    valid_lft forever preferred_lft forever
```

Drag and drop the networking parameters from the left onto the correct values on the right. Check the answer below.

NIC MAC address

default gateway

subnet mask

host IP address

NIC vendor OUI

- A. Mastered
- B. Not Mastered

**Answer:** A

**Explanation:**



NIC MAC address

default gateway

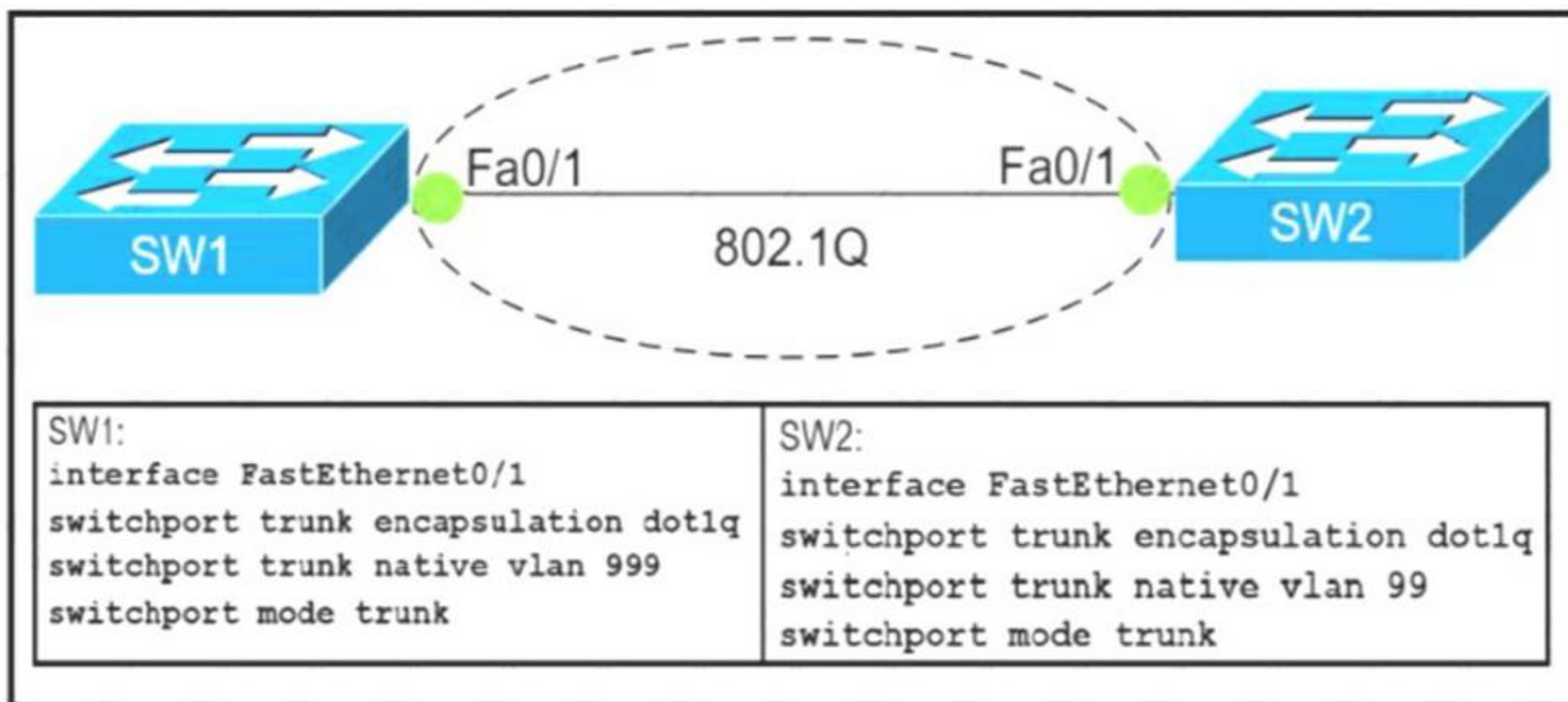
subnet mask

host IP address

NIC vendor OUI

#### NEW QUESTION 54

Refer to Exhibit.



Which action do the switches take on the trunk link?

- A. The trunk does not form and the ports go into an err-disabled status.
- B. The trunk forms but the mismatched native VLANs are merged into a single broadcast domain.
- C. The trunk does not form, but VLAN 99 and VLAN 999 are allowed to traverse the link.
- D. The trunk forms but VLAN 99 and VLAN 999 are in a shutdown state.

**Answer: C**

#### NEW QUESTION 55

Which command is used to specify the delay time in seconds for LLDP to initialize on any interface?

- A. lldp timer
- B. lldp holdtimt
- C. lldp reinit
- D. lldp tlv-select

**Answer: D**

#### NEW QUESTION 58

An engineer configured an OSPF neighbor as a designated router. Which state verifies the designated router is in the proper mode?

- A. Exchange
- B. 2-way
- C. Full
- D. Init

Answer: B

**NEW QUESTION 63**

Refer to the exhibit.

```
Designated Router (ID) 10.11.11.11, Interface address 10.10.10.1
Backup Designated router (ID) 10.3.3.3, Interface address 10.10.10.3
Timer intervals configured, Hello 10, Dead 40, Wait 40, Retransmit 5
oob-resync timeout 40
Hello due in 00:00:08
Supports Link-local Signaling (LLS)
Cisco NSF helper support enabled
IETF NSF helper support enabled
Index 1/1/1, flood queue length 0
Next 0x0(0)/0x0(0)/0x0(0)
Last flood scan length is 1, maximum is 6
Last flood scan time is 0 msec, maximum is 1 msec
Neighbor Count is 3, Adjacent neighbor count is 3
Adjacent with neighbor 10.1.1.4
Adjacent with neighbor 10.2.2.2
Adjacent with neighbor 10.3.3.3 (Backup Designated Router)
Suppress hello for 0 neighbor(s)
```

The show ip ospf interface command has been executed on R1. How is OSPF configured?

- A. The interface is not participating in OSPF
- B. A point-to-point network type is configured
- C. The default Hello and Dead timers are in use
- D. There are six OSPF neighbors on this interface

Answer: A

**NEW QUESTION 65**

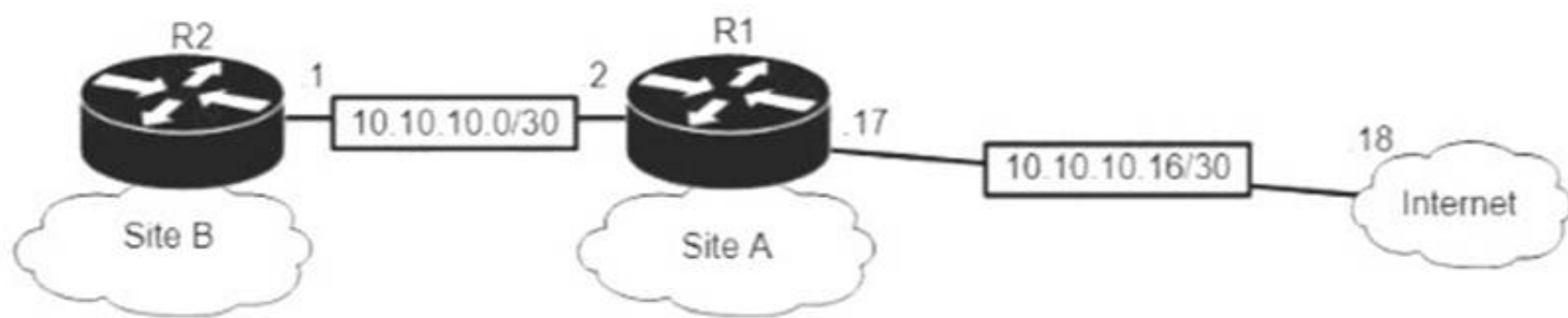
An engineer is asked to protect unused ports that are configured in the default VLAN on a switch. Which two steps will fulfill the request? (Choose two)

- A. Configure the ports in an EtherChannel.
- B. Administratively shut down the ports
- C. Configure the port type as access and place in VLAN 99
- D. Configure the ports as trunk ports
- E. Enable the Cisco Discovery Protocol

Answer: AD

**NEW QUESTION 69**

Refer to the exhibit.



```
R2#sh run | b router ospf
router ospf 1
router-id 2.2.2.2
log-adjacency-changes
auto-cost reference-bandwidth 10000
network 10.10.10.1 0.0.0.0 area 0
network 10.10.13.1 0.0.0.0 area 0
```

```
R2#show ip route
Gateway of last resort is not set
10.0.0.0/8 is variably subnetted, 3 subnets, 3 masks
C 10.10.10.0/30 is directly connected
C 10.10.13.0/25 is directly connected, Vlan20
C 10.10.13.144/28 is directly connected, Vlan40
```

```
R1#show ip route
Gateway of last resort is not set
10.0.0.0/8 is variably subnetted, 4 subnets, 3 masks
C 10.10.10.0/30 is directly connected, FastEthernet0/1
O 10.10.13.0/25 [110/6576] via 10.10.10.1, 01:37:03
C 10.10.10.16/30 is directly connected, FastEthernet0/24
O 10.10.13.144/28 [110/110] via 10.10.10.1, 01:37:03
```

```
R1#sh run | b router ospf
router ospf 1
router-id 1.1.1.1
log-adjacency-changes
auto-cost reference-bandwidth 10000
network 10.10.10.2 0.0.0.0 area 0
default-information originate
```

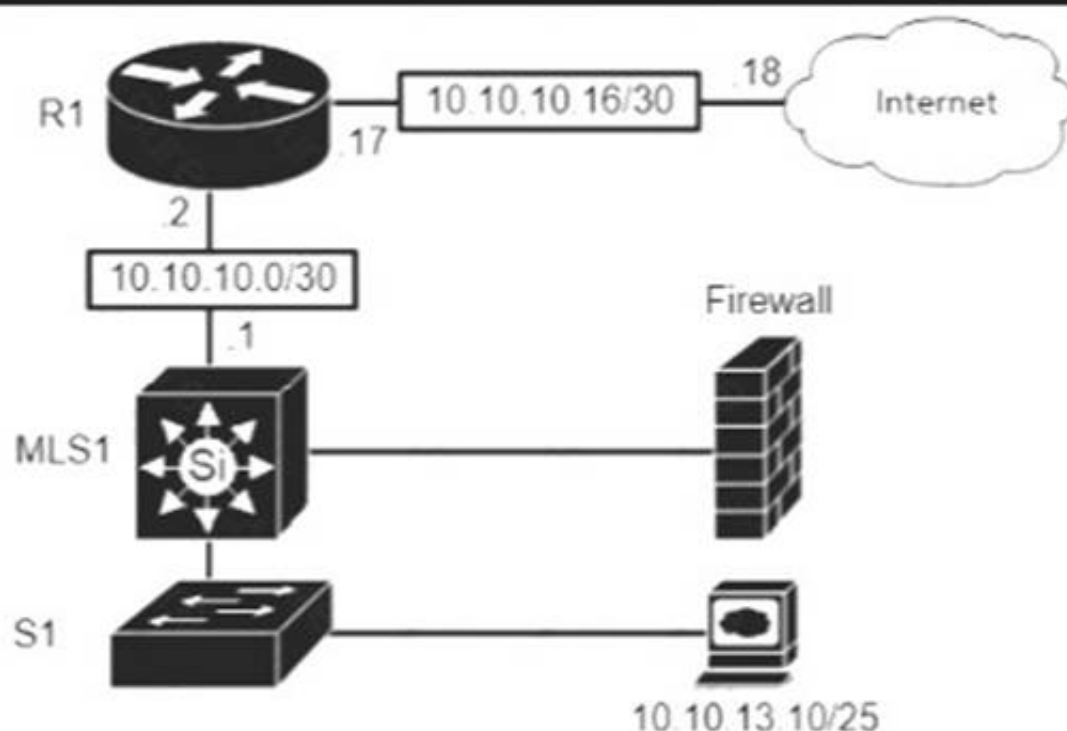
An engineer is bringing up a new circuit to the MPLS provider on the Gi0/1 interface of Router1. The new circuit uses eBGP and teams the route to VLAN25 from the BGP path. What is the expected behavior for the traffic flow for route 10.10.13.0/25?

- A. Traffic to 10.10.13.0/25 is load balanced out of multiple interfaces
- B. Route 10.10.13.0/25 is updated in the routing table as being learned from interface Gi0/1.
- C. Traffic to 10.10.13.0/25 is asymmetrical
- D. Route 10.10.13.0/25 learned via the Gi0/0 interface remains in the routing table

Answer: D

#### NEW QUESTION 74

Refer to the exhibit.



```
R1#sh ip ro
Gateway of last resort is 10.10.10.18 to network 0.0.0.0

10.0.0.0/8 is variably subnetted, 4 subnets, 3 masks
C 10.10.10.0/30 is directly connected, FastEthernet0/1
O 10.10.13.0/25 [110/6576] via 10.10.10.1, 06:58:21, FastEthernet0/1
C 10.10.10.16/30 is directly connected, FastEthernet0/24
O 10.10.13.144/28 [110/110] via 10.10.10.1, 06:58:21, FastEthernet0/1
B* 0.0.0.0/0 [20/0] via 10.10.10.18, 01:17:58
```



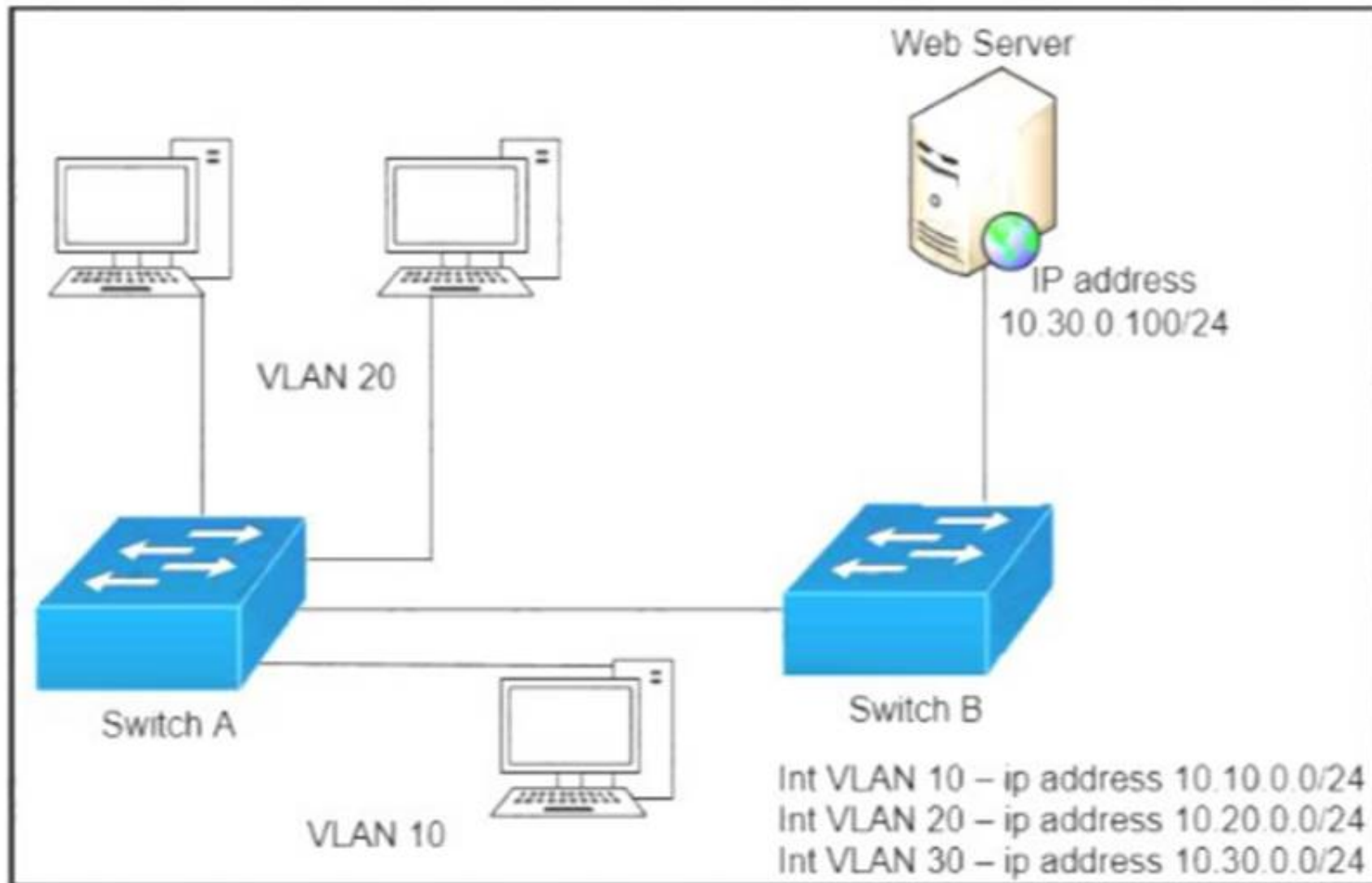
Which type of route does R1 use to reach host 10.10.13.10/32?

- A. floating static route
- B. host route
- C. default route
- D. network route

Answer: D

#### NEW QUESTION 75

Refer to the exhibit.



A network engineer must block access for all computers on VLAN 20 to the web server via HTTP. All other computers must be able to access the web server. Which configuration when applied to switch A accomplishes this task?

- ☐

```
config t
ip access-list extended wwwblock
deny tcp any host 10.30.0.100 eq 80
int vlan 10
ip access-group wwwblock in
```
- ☐

```
config t
ip access-list extended wwwblock
deny tcp any host 10.30.0.100 eq 80
permit ip any any
int vlan 20
ip access-group wwwblock in
```
- ☒

```
config t
ip access-list extended wwwblock
permit ip any any
deny tcp any host 10.30.0.100 eq 80
int vlan 30
ip access-group wwwblock in
```
- ☐

```
config t
ip access-list extended wwwblock
permit ip any any
deny tcp any host 10.30.0.100 eq 80
int vlan 20
ip access-group wwwblock in
```

- A. Option A
- B. Option B
- C. Option C
- D. Option D

Answer: B



#### NEW QUESTION 77

Which feature on the Cisco Wireless LAN Controller when enabled restricts management access from specific networks?

- A. CPUACL
- B. TACACS
- C. Flex ACL
- D. RADIUS

**Answer:** B

#### NEW QUESTION 82

Refer to the exhibit.

```
SW1#sh lacp neighbor
Flags:  S - Device is requesting Slow LACPDUs
        F - Device is requesting Fast LACPDUs
        A - Device is in Active mode          P - Device is in Passive mode

Channel group 35 neighbors

Partner's information:
```

Port	Flags	LACP port Priority	Dev ID	Age	Admin key	Oper Key	Port Number	Port State
Et1/0	SP	32768	aabb.cc80.7000	8s	0x0	0x23	0x101	0x3C
Et1/1	SP	32768	aabb.cc80.7000	8s	0x0	0x23	0x102	0x3C

Based on the LACP neighbor status, in which mode is the SW1 port channel configured?

- A. passive
- B. mode on
- C. auto
- D. active

**Answer:** A

#### NEW QUESTION 83

An organization has decided to start using cloud-provided services. Which cloud service allows the organization to install its own operating system on a virtual machine?

- A. platform-as-a-service
- B. software-as-a-service
- C. network-as-a-service
- D. infrastructure-as-a-service

**Answer:** D

#### NEW QUESTION 84

Which mode allows access points to be managed by Cisco Wireless LAN Controllers?

- A. autonomous
- B. lightweight
- C. bridge
- D. mobility express

**Answer:** B

#### NEW QUESTION 87

Which result occurs when PortFast is enabled on an interface that is connected to another switch?

- A. Spanning tree may fail to detect a switching loop in the network that causes broadcast storms
- B. VTP is allowed to propagate VLAN configuration information from switch to switch automatically.
- C. Root port choice and spanning tree recalculation are accelerated when a switch link goes down
- D. After spanning tree converges PortFast shuts down any port that receives BPDUs.

**Answer:** A

**NEW QUESTION 88**

Refer to exhibit.

```
Router(config)#interface GigabitEthernet 1/0/1
Router(config-if)#ip address 192.168.16.143 255.255.255.240
Bad mask /28 for address 192.168.16.143
```

Which statement explains the configuration error message that is received?

- A. It is a broadcast IP address
- B. The router does not support /28 mask.
- C. It belongs to a private IP address range.
- D. IT is a network IP address.

**Answer:** A

**NEW QUESTION 91**

When a floating static route is configured, which action ensures that the backup route is used when the primary route fails?

- A. The floating static route must have a higher administrative distance than the primary route so it is used as a backup
- B. The administrative distance must be higher on the primary route so that the backup route becomes secondary.
- C. The floating static route must have a lower administrative distance than the primary route so it is used as a backup
- D. The default-information originate command must be configured for the route to be installed into the routing table

**Answer:** A

**NEW QUESTION 95**

What makes Cisco DNA Center different from traditional network management applications and their management of networks?

- A. It only supports auto-discovery of network elements in a greenfield deployment.
- B. It modular design allows someone to implement different versions to meet the specific needs of an organization
- C. IT abstracts policy from the actual device configuration
- D. It does not support high availability of management functions when operating in cluster mode

**Answer:** A

**NEW QUESTION 98**

Which network allows devices to communicate without the need to access the Internet?

- A. 1729.0.0/16
- B. 172.28.0.0/16
- C. 192.0.0.0/8
- D. 209.165.201.0/24

**Answer:** D

**NEW QUESTION 102**

When a site-to-site VPN is used, which protocol is responsible for the transport of user data?

- A. IKEv2
- B. IKEv1
- C. IPsec
- D. MD5

**Answer:** C

**NEW QUESTION 105**

Drag drop the descriptions from the left onto the correct configuration-management technologies on the right.

fundamental configuration elements are stored in a manifest

uses TCP port 10002 for configuration push jobs

uses Ruby for fundamental configuration elements

uses SSH for remote device communication

uses TCP 8140 for communication

uses YAML for fundamental configuration elements

Ansible

Chef

Puppet

- A. Mastered
- B. Not Mastered

Answer: A

Explanation:

fundamental configuration elements are stored in a manifest

uses TCP port 10002 for configuration push jobs

uses Ruby for fundamental configuration elements

uses SSH for remote device communication

uses TCP 8140 for communication

uses YAML for fundamental configuration elements

Ansible

uses TCP port 10002 for configuration push jobs

uses TCP 8140 for communication

Chef

uses Ruby for fundamental configuration elements

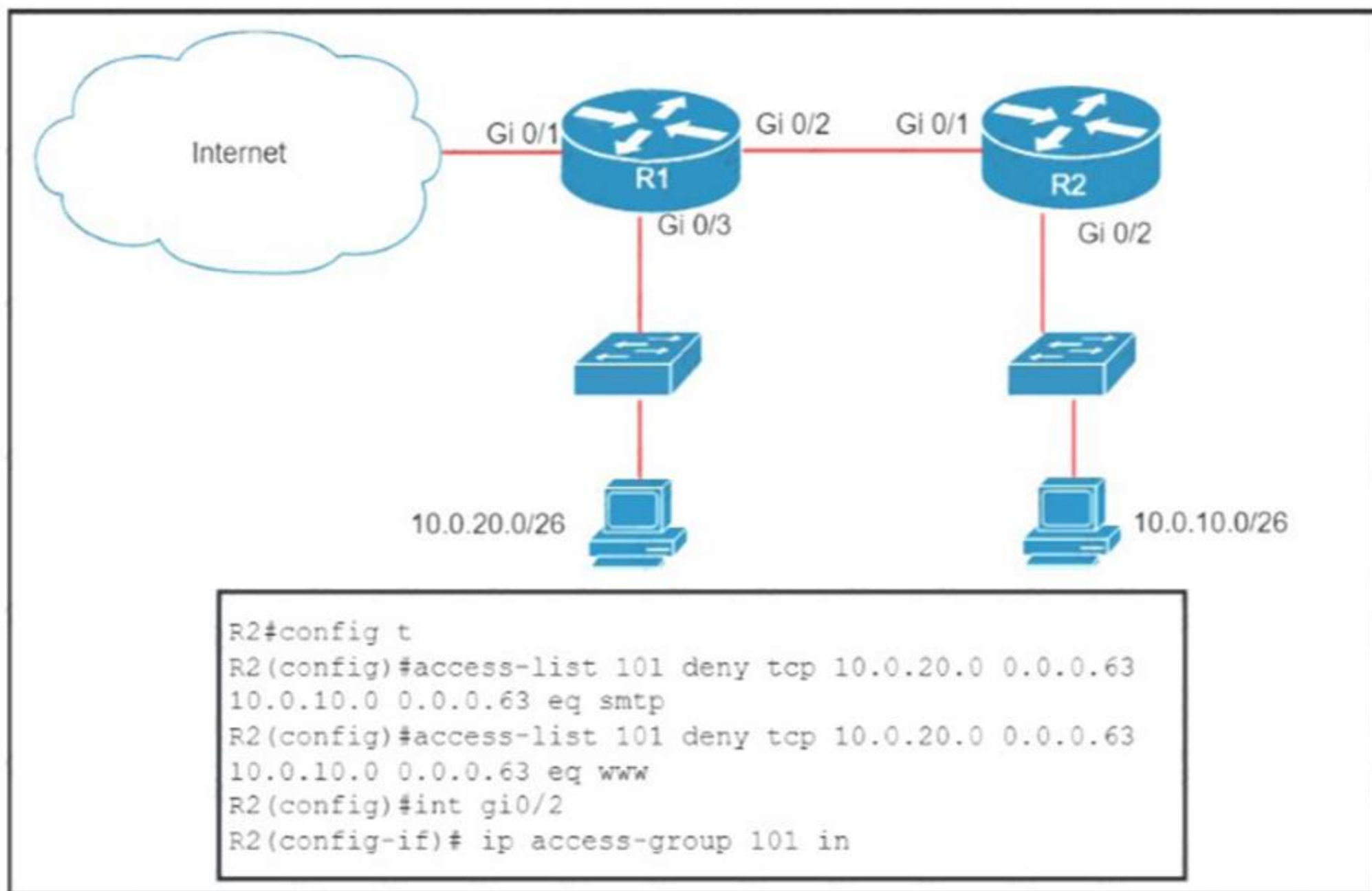
uses SSH for remote device communication

Puppet

uses YAML for fundamental configuration elements

fundamental configuration elements are stored in a manifest

NEW QUESTION 106  
Refer to the exhibit.



An extended ACL has been configured and applied to router R2. The configuration failed to work as intended. Which two changes stop outbound traffic on TCP ports 25 and 80 to 10.0.20.0/26 from the 10.0.10.0/26 subnet while still allowing all other traffic? (Choose two)

- A. Add a "permit ip any any" statement to the beginning of ACL 101 for allowed traffic.
- B. Add a "permit ip any any" statement at the end of ACL 101 for allowed traffic.
- C. The source and destination IPs must be swapped in ACL 101.
- D. The ACL must be configured on the Gi0/2 interface inbound on R1.
- E. The ACL must be moved to the Gi0/1 interface outbound on R2.

**Answer:** AE

#### NEW QUESTION 111

R1 has learned route 192.168.12.0/24 via IS-IS, OSPF, RIP, and Internal EIGRP. Under normal operating conditions, which routing protocol is installed in the routing table?

- A. IS-IS
- B. RIP
- C. Internal EIGRP
- D. OSPF

**Answer:** C

#### NEW QUESTION 116

Refer to the exhibit.

```

R1# show ip route | begin gateway
Gateway of last resort is 209.165.200.246 to network 0.0.0.0
S* 0.0.0.0/0 [1/0] via 209.165.200.246, Serial0/1/0
    is directly connected, Serial0/1/0
    172.16.0.0/16 is variably subnetted, 3 subnets, 3 masks
    S 172.16.0.0/24 [1/0] via 207.165.200.250, Serial0/0/0
    O 172.16.0.128/25 [110/38443] via 207.165.200.254, 00:00:23, Serial0/0/1
    D 172.16.0.192/29 [90/3184439] via 207.165.200.254, 00:00:25, Serial0/0/1
    209.165.200.0/24 is variably subnetted, 4 subnets, 2 masks
    C 209.165.200.248/30 is directly connected, Serial0/0/0
    L 209.165.200.249/32 is directly connected, Serial0/0/0
    C 209.165.200.252/30 is directly connected, Serial0/0/1
    L 209.165.200.253/32 is directly connected, Serial0/0/1
  
```

With which metric was the route to host 172.16.0.202 learned?

- A. 110
- B. 38443
- C. 3184439

**Answer:** C



#### NEW QUESTION 120

Which statement about Link Aggregation when implemented on a Cisco Wireless LAN Controller is true?

- A. To pass client traffic two or more ports must be configured.
- B. The EtherChannel must be configured in "mode active"
- C. When enabled the WLC bandwidth drops to 500 Mbps
- D. One functional physical port is needed to pass client traffic

**Answer:** C

#### NEW QUESTION 123

Which API is used in controller-based architectures to interact with edge devices?

- A. overlay
- B. northbound
- C. underlay
- D. southbound

**Answer:** D

#### NEW QUESTION 124

Drag and drop the functions from the left onto the correct network components on the right

holds the TCP/IP settings to be distributed to the clients

resolves web URLs to IP addresses

stores a list of IP addresses mapped to names

assigns a default gateway to a client

assigns IP addresses to enabled clients

DHCP Server

DNS Server

- A. Mastered
- B. Not Mastered

**Answer:** A

**Explanation:**



NEW QUESTION 125

.....

## Thank You for Trying Our Product

### We offer two products:

1st - We have Practice Tests Software with Actual Exam Questions

2nd - Questions and Answers in PDF Format

### 200-301 Practice Exam Features:

- \* 200-301 Questions and Answers Updated Frequently
- \* 200-301 Practice Questions Verified by Expert Senior Certified Staff
- \* 200-301 Most Realistic Questions that Guarantee you a Pass on Your First Try
- \* 200-301 Practice Test Questions in Multiple Choice Formats and Updates for 1 Year

**100% Actual & Verified — Instant Download, Please Click**  
**[Order The 200-301 Practice Test Here](#)**