

# Exam Questions MD-102

Endpoint Administrator

<https://www.2passeasy.com/dumps/MD-102/>



NEW QUESTION 1

- (Exam Topic 1)

For each of the following statements, select Yes if the statement is true. Otherwise, select No.

NOTE: Each correct selection is worth one point.

Statements	Yes	No
User1 can create a file named D:\Folder1\file1.txt on Device4 by using Notepad.	<input type="radio"/>	<input type="radio"/>
User2 can remove D:\Folder1 from the list of protected folders on Device2.	<input type="radio"/>	<input type="radio"/>
User3 can create a file named C:\Users\User3\Desktop\file1.txt on Device2 by running a custom Windows PowerShell script.	<input type="radio"/>	<input type="radio"/>

- A. Mastered
- B. Not Mastered

Answer: A

Explanation:

A screenshot of a computer Description automatically generated with medium confidence

NEW QUESTION 2

- (Exam Topic 1)

You implement the planned changes for Connection1 and Connection2

How many VPN connections will there be for User1 when the user signs in to Device 1 and Devke2? To answer select the appropriate options in the answer area.

NOTE; Each correct selection is worth one point.

Answer Area

Device1:

1

2

3

4

5

Device2:

1

2

3

4

5

- A. Mastered
- B. Not Mastered

Answer: A

Explanation:

Graphical user interface, table Description automatically generated

NEW QUESTION 3

- (Exam Topic 1)

Which user can enroll Device6 in Intune?

- A. User4 and User2 only
- B. User4 and User 1 only
- C. User1, User2, User3, and User4
- D. User4. User Land User2 only

Answer: B

NEW QUESTION 4

- (Exam Topic 1)

You implement Boundary1 based on the planned changes.

Which devices have a network boundary of 192.168.1.0/24 applied?

- A. Device2 only
- B. Device3 only
- C. Device 1. Device2. and Device5 only
- D. Device 1, Device2, Device3, and Device4 only

Answer: D

Explanation:

Reference:

https://docs.microsoft.com/en-us/mem/intune/configuration/network-boundary-windows

### NEW QUESTION 5

- (Exam Topic 2)

You need to recommend a solution to meet the device management requirements.

What should you include in the recommendation? To answer, select the appropriate options in the answer area. NOTE: Each correct selection is worth one point.

For the Research department employees:

<input type="checkbox"/>
An app configuration policy
An app protection policy
Azure information Protection
iOS app provisioning profiles

For the Sales department employees:

<input type="checkbox"/>
An app configuration policy
An app protection policy
Azure information Protection
iOS app provisioning profiles

- A. Mastered
- B. Not Mastered

Answer: A

#### Explanation:

Reference:

<https://github.com/MicrosoftDocs/IntuneDocs/blob/master/intune/app-protection-policy.md>

<https://docs.microsoft.com/en-us/azure/information-protection/configure-usage-rights#do-not-forward-option-fo>

### NEW QUESTION 6

- (Exam Topic 2)

What should you use to meet the technical requirements for Azure DevOps?

- A. An app protection policy
- B. Windows Information Protection (WIP)
- C. Conditional access
- D. A device configuration profile

Answer: C

#### Explanation:

References:

<https://docs.microsoft.com/en-us/azure/devops/organizations/accounts/manage-conditional-access? view=azure-devops>

### NEW QUESTION 7

- (Exam Topic 2)

You need to resolve the performance issues in the Los Angeles office.

How should you configure the update settings? To answer, select the appropriate options in the answer area. NOTE: Each correct selection is worth one point.

#### Answer Area

Change Delivery Optimization  
download mode to:

<input type="checkbox"/>
Bypass mode
HTTP blended with internet peering
HTTP blended with peering behind same NAT
Simple download mode with no peering

Update Active Hours Start to:

<input type="checkbox"/>
10 AM
11 AM
10 PM
11 PM

Update Active Hours End to:

<input type="checkbox"/>
10 AM
11 AM
10 PM
11 PM

- A. Mastered
- B. Not Mastered

Answer: A

#### Explanation:

A screenshot of a computer Description automatically generated with low confidence

Reference:

<https://docs.microsoft.com/en-us/windows/deployment/update/waas-delivery-optimization> <https://2pintsoftware.com/delivery-optimization-dl-mode/>

#### NEW QUESTION 8

- (Exam Topic 3)

You have a Microsoft 365 subscription.

You have 10 computers that run Windows 10 and are enrolled in mobile device management (MDM). You need to deploy the Microsoft 36S Apps for enterprise suite to all the computers.

What should you do?

- A. From the Microsoft Intune admin center, create a Windows 10 device profile.
- B. From Azure AD, add an app registration.
- C. From Azure A
- D. add an enterprise application.
- E. From the Microsoft Intune admin center, add an app.

**Answer:** D

#### Explanation:

To deploy Microsoft 365 Apps for enterprise to Windows 10 devices that are enrolled in Intune, you need to add an app of type “Windows 10 app (Win32)” in the Microsoft Intune admin center and configure the app settings. You can then assign the app to groups of users or devices. References:

<https://docs.microsoft.com/en-us/mem/intune/apps/apps-win32-app-management>

#### NEW QUESTION 9

- (Exam Topic 3)

You have a Microsoft 365 E5 subscription and a computer that runs Windows 11. You need to create a customized installation of Microsoft 365 Apps for enterprise.

Which four actions should you perform in sequence? To answer, move the appropriate cmdlets from the list of cmdlets to the answer area and arrange them in the correct order.

**Actions**

Run setup.exe and specify the /packager switch.

Download the Microsoft Office Deployment Tool (ODT) and run the self-extracting executable (.exe) file.

Edit the XML configuration file.

Run setup.exe and specify the /download switch.

Run setup.exe and specify the /configure switch.

>

<

**Answer Area**

>

<

- A. Mastered
- B. Not Mastered

**Answer:** A

#### Explanation:

- \* 1. Download ODT application
- \* 2. Create a configuration file (XML)
- \* 3. setup.exe /download to download the installation files
- \* 4. setup.exe /configure to deploy the application

<https://learn.microsoft.com/en-us/deployoffice/deploy-microsoft-365-apps-local-source>

#### NEW QUESTION 10

- (Exam Topic 3)

You have a Microsoft 365 E5 subscription and 25 Apple iPads.

You need to enroll the iPads in Microsoft Intune by using the Apple Configurator enrollment method. What should you do first?

- A. Upload a file that has the device identifiers for each iPad.
- B. Modify the enrollment restrictions.
- C. Configure an Apple MDM push certificate.
- D. Add your user account as a device enrollment manager (DEM).

**Answer:** C

#### Explanation:

Reference:

[https://www.manageengine.com/mobile-device-management/help/enrollment/mdm\\_creating\\_apns\\_certificate.ht](https://www.manageengine.com/mobile-device-management/help/enrollment/mdm_creating_apns_certificate.ht) Prerequisites for iOS enrollment Before you can enable iOS devices, complete the following steps: Make sure your device is eligible for Apple device enrollment. Set up Intune - These steps set up your Intune infrastructure. In particular, device enrollment requires that you set your MDM authority. Get an Apple MDM Push certificate - Apple requires a certificate to enable management of iOS and macOS devices.

<https://docs.microsoft.com/en-gb/intune/enrollment/apple-mdm-push-certificate-get>

#### NEW QUESTION 10

- (Exam Topic 3)

You have the on-premises servers shown in the following table.

Name	Description
DC1	Domain controller that runs Windows Server 2022
Server1	Standalone server that runs Windows Server 2022
Server2	Member server that runs Windows Server 2022 and has the Remote Access role installed
Server3	Member server that runs Windows Server 2019
Server4	Red Hat Enterprise Linux (RHEL) 8.4 server

You have a Microsoft 365 E5 subscription that contains Android and iOS devices. All the devices are managed by using Microsoft Intune.

You need to implement Microsoft Tunnel for Intune. The solution must minimize the number of open firewall ports.

To which server can you deploy a Tunnel Gateway server, and which inbound ports should be allowed on the server to support Microsoft Tunnel connections? To answer, select the appropriate options in the answer area.

NOTE: Each correct selection is worth one point.

Server:

Ports:

- A. Mastered
- B. Not Mastered

**Answer:** A

#### Explanation:

Box 1: Server4

Microsoft Tunnel is a VPN gateway solution for Microsoft Intune that runs in a container on Linux and allows access to on-premises resources from iOS/iPadOS and Android Enterprise devices using modern authentication and Conditional Access.

Box 2: TCP 443 and UDP 443 only

Some traffic goes to your public facing IP address for the Tunnel. The VPN channel will use TCP, TLS, UDP, and DTLS over port 443.

By default, port 443 is used for both TCP and UDP, but this can be customized via the Intune Saerver Configuration – Server port setting. If changing the default port (443) ensure your inbound firewall rules are adjusted to the custom port.

Incorrect:

TCP 1723 is not used.

Reference: <https://docs.microsoft.com/en-us/mem/intune/protect/microsoft-tunnel-overview>

#### NEW QUESTION 15

- (Exam Topic 3)

You have an Azure AD tenant named contoso.com that contains the devices shown in the following table.

Name	Operating system
Device1	Windows 10
Device2	Android 8.0
Device3	Android 9
Device4	iOS 11.0
Device5	iOS 11.4.1

AH devices contain an app named App1 and are enrolled in Microsoft Intune.

You need to prevent users from copying data from App1 and pasting the data into other apps.

Which type of policy and how many policies should you create in Intune? To answer, select the appropriate options in the answer area.

NOTE: Each correct selection is worth one point.

Answer Area

Policy type:

Minimum number of policies:



- A. Mastered  
B. Not Mastered

**Answer:** A

**Explanation:**

of Corre Answer Only: The correct answer is app protection policy because it allows you to customize the settings of apps for iOS/iPadOS or Android devices1. One of the settings you can configure is Restrict cut, copy, and paste between other apps, which lets you prevent users from copying data from App1 and pasting the data into other apps2. You only need one policy to apply this setting to all devices that have App1 installed.

References: 1: App configuration policies for Microsoft Intune | Microsoft Learn <https://learn.microsoft.com/en-us/mem/intune/apps/app-configuration-policies-overview> 2: Troubleshoot restricting cut, copy, and paste between applications - Intune | Microsoft Learn <https://learn.microsoft.com/en-us/troubleshoot/mem/intune/app-protection-policies/troubleshoot-cut-copy-paste>

**NEW QUESTION 19**

- (Exam Topic 3)

You have a Microsoft 365 subscription that uses Microsoft Intune Suite. You use Microsoft Intune to manage devices. Azure AD joined Windows devices enroll automatically in Intune. You have the devices shown in the following table.

Name	Operating system	Azure AD joined	Line-of-business (LOB) apps installed
Device1	64-bit version of Windows 10 Pro	Yes	No
Device2	32-bit version of Windows 10 Pro	No	Yes
Device3	64-bit version of Windows 10 Pro	No	Yes

You are preparing to upgrade the devices to Windows 11. All the devices are compatible with Windows 11. You need to evaluate Windows Autopilot and in-place upgrade as deployment methods to implement

Windows 11 Pro on the devices, while retaining all user settings and applications.

Which devices can be upgraded by using each method? To answer, select the appropriate options in the answer area.

NOTE: Each correct selection is worth one point.

Answer Area

Windows Autopilot: Device1 and Device3 only  
None of the devices  
Device1 only  
Device1 and Device3 only  
Device1, Device2, and Device3

In-place upgrade: Device1 and Device3 only  
None of the devices  
Device1 only  
Device1 and Device3 only  
Device1, Device2, and Device3

- A. Mastered  
B. Not Mastered

**Answer:** A

**Explanation:**

Answer Area

Windows Autopilot: Device1 and Device3 only  
None of the devices  
Device1 only  
Device1 and Device3 only  
Device1, Device2, and Device3

In-place upgrade: Device1 and Device3 only  
None of the devices  
Device1 only  
Device1 and Device3 only  
Device1, Device2, and Device3

**NEW QUESTION 20**

- (Exam Topic 3)

You have 100 computers that run Windows 10.

You plan to deploy Windows 11 to the computers by performing a wipe and load installation. You need to recommend a method to retain the user settings and the user data.

Which three actions should you recommend be performed in sequence? To answer, move the appropriate actions from the list of actions to the answer area and arrange them in the correct order.

Actions

Configure known folder redirection in Microsoft OneDrive.

Run scanstate.exe.

Run loadstate.exe.

Enable Enterprise State Roaming.

Create a system image backup.

Deploy Windows 11.

Restore a system image backup.

Answer Area

>

<

^

v

- A. Mastered
- B. Not Mastered

Answer: A

Explanation:

Actions

Configure known folder redirection in Microsoft OneDrive.

Run scanstate.exe.

Run loadstate.exe.

Enable Enterprise State Roaming.

Create a system image backup.

Deploy Windows 11.

Restore a system image backup.

Answer Area

Create a system image backup.

Deploy Windows 11.

Restore a system image backup.

>

<

^

v

NEW QUESTION 22

- (Exam Topic 3)

You have a Microsoft 365 E5 subscription that contains a user named User1 and a web app named Appl. App1 must only accept modern authentication requests. You plan to create a Conditional Access policy named CAPolicy1 that will have the following settings:

- Assignments
  - Users or workload identities: User1
  - Cloud apps or actions: App1
- Access controls
  - Grant: Block access

You need to block only legacy authentication requests to Appl. Which condition should you add to CAPolicy1?

- A. Filter for devices
- B. Device platforms
- C. User risk
- D. Sign-in risk
- E. Client apps

Answer: E

Explanation:

you can use the client apps condition to block legacy authentication requests to App11. Legacy authentication is a term that refers to authentication protocols that do not support modern authentication features such as multi-factor authentication or conditional access2. Examples of legacy authentication protocols include Basic Authentication, Digest Authentication, NTLM, and Kerberos2. To block legacy authentication requests, you need to configure the client apps condition to include Other clients, which covers any client that uses legacy authentication protocols13. References: 1: Conditional Access: Block legacy authentication | Microsoft Learn <https://learn.microsoft.com/en-us/mem/identity-protection/conditional-access/block-legacy-authentication> 2:

What is legacy authentication? | Microsoft Learn

<https://learn.microsoft.com/en-us/mem/identity-protection/conditional-access/legacy-authentication> 3: Client apps condition in Azure Active Directory Conditional Access | Microsoft Learn <https://learn.microsoft.com/en-us/mem/identity-protection/conditional-access/client-apps-condition>

NEW QUESTION 27

- (Exam Topic 3)

You have a Microsoft 365 subscription. The subscription contains computers that run Windows 11 and are enrolled in Microsoft Intune. You need to create a compliance policy that meets the following requirements:

- Requires BitLocker Drive Encryption (BitLocker) on each device
- Requires a minimum operating system version

Which setting of the compliance policy should you configure for each requirement? To answer, drag the appropriate settings to the correct requirements. Each setting may be used once, more than once, or not at all. You may need to drag the split bar between panes or scroll to view content.

NOTE: Each correct selection is worth one point,

Settings

Device Health

Device Properties

Microsoft Defender for Endpoint

System Security

Answer Area

Requires BitLocker:

Requires a minimum operating system version:

- A. Mastered

B. Not Mastered

Answer: A

Explanation:



NEW QUESTION 28

- (Exam Topic 3)

Your company has an Azure AD tenant named contoso.com that contains several Windows 10 devices. When you join new Windows 10 devices to contoso.com, users are prompted to set up a four-digit pin. You need to ensure that the users are prompted to set up a six-digit pin when they join the Windows 10 devices to contoso.com.

Solution: From the Microsoft Entra admin center, you configure automatic mobile device management (MDM) enrollment. From the Microsoft Intune admin center, you configure the Windows Hello for Business enrollment options. Does this meet the goal?

- A. Yes
- B. No

Answer: B

NEW QUESTION 33

- (Exam Topic 3)

You have 100 Windows 10 devices enrolled in Microsoft Intune.

You need to configure the devices to retrieve Windows updates from the internet and from other computers on a local network.

Which Delivery Optimization setting should you configure, and which type of Intune object should you create? To answer, select the appropriate options in the answer area.

NOTE: Each correct selection is worth one point.



- A. Mastered
- B. Not Mastered

Answer: A

Explanation:

Delivery Optimization setting: B. Download mode Intune object: A configuration profile  
To configure the devices to retrieve Windows updates from the internet and from other computers on a local network, you need to configure the Download mode setting in a Delivery Optimization device configuration profile. This setting specifies how the devices use Delivery Optimization to download updates. You can choose from several options, such as HTTP only, LAN only, or Group. For example, you can set the Download mode to Group and specify a group ID for the devices to share updates among themselves and with other devices that have the same group ID. You can also set the Download mode to Internet to allow the devices to download updates from Microsoft or other devices on the internet that use Delivery Optimization. References: <https://docs.microsoft.com/en-us/mem/intune/configuration/delivery-optimization-windows>

NEW QUESTION 37

- (Exam Topic 3)

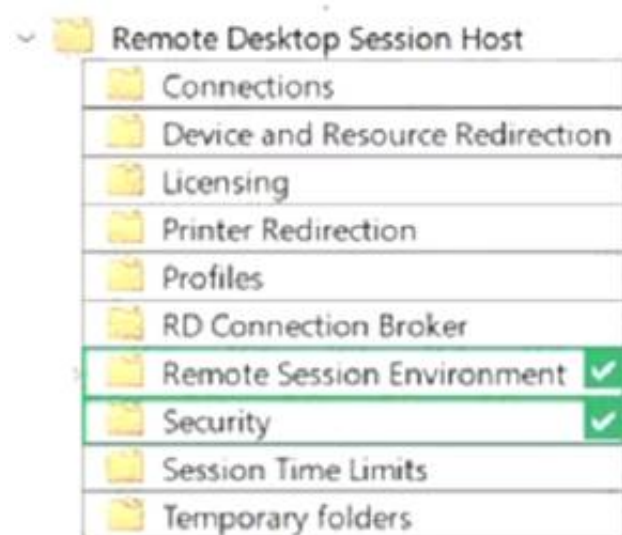
Your network contains an Active Directory domain. The domain contains 1.000 computers that run Windows 11.

You need to configure the Remote Desktop settings of all the computers. The solution must meet the following requirements:

- Prevent the sharing of clipboard contents.
- Ensure that users authenticate by using Network Level Authentication (NLA).

Which two nodes of the Group Policy Management Editor should you use? To answer, select the appropriate nodes in the answer area. NOTE: Each correct selection is worth one point.

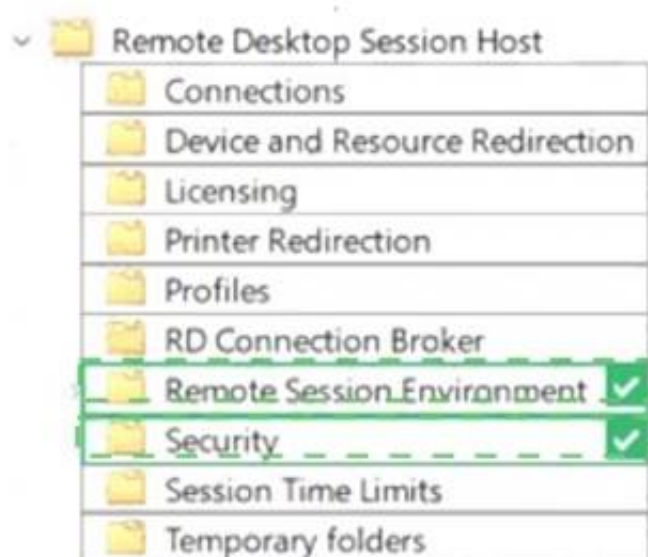




- A. Mastered
- B. Not Mastered

Answer: A

Explanation:



## NEW QUESTION 42

- (Exam Topic 3)

You have a Microsoft 365 E5 subscription.

You create an app protection policy for Android devices named Policy1 as shown in the following exhibit.

Home > Apps >

### Create policy

☒ Basics
 ☒ Apps
 ☐ Data protection
 ☐ Access requirements

Choose how you want to apply this policy to apps on different devices. Then add at least one app.

Target to apps on all device types: ☐ Yes ☒ No

Device types:

Target policy to:

*We'll continue to add managed apps to your policy as they become available in Intune. View a list of apps that will be targeted*

Use the drop-down menus to select the answer choice that completes each statement based on the information presented in the graphic.

NOTE: Each correct selection is worth one point.

To apply Policy1 to an Android device, you must [answer choice].

install the Company Portal app on the device
install the Microsoft Authenticator app on the device
onboard the device to Microsoft Defender for Endpoint
onboard the device to the Microsoft 365 compliance center

When Policy1 is assigned, the policy will apply to [answer choice].

users only
devices only
users and devices

- A. Mastered  
 B. Not Mastered

**Answer:** A

**Explanation:**

Box 1: Install the Intune Company Portal app on the device

On Android, Android devices will prompt to install the Intune Company Portal app regardless of which Device type is chosen.

Box 2: Devices only

For Android devices, unmanaged devices are devices where Intune MDM management has not been detected. This includes devices managed by third-party MDM vendors.

Reference:

<https://docs.microsoft.com/en-us/mem/intune/apps/app-protection-policies#app-protection-policies-for-iosipado>

**NEW QUESTION 44**

- (Exam Topic 3)

You have an Azure Active Directory Premium Plan 2 subscription that contains the users shown in the following table.

Name	Member of	Assigned license
User1	Group1	Enterprise Mobility + Security E5
User2	Group2	Enterprise Mobility + Security E5

You purchase the devices shown in the following table.

Name	Type
Device1	Windows 10
Device2	Android

You configure automatic mobile device management (MDM) and mobile application management (MAM) enrollment by using the following settings:

> MDM user scope: Group1

> MAM user scope: Group2

For each of the following statements, select Yes if the statement is true. Otherwise, select No.

NOTE: Each correct selection is worth one point.

Statements	Yes	No
User1 can enroll Device1 in Intune by using automatic enrollment.	<input type="radio"/>	<input type="radio"/>
User1 can enroll Device2 in Intune by using automatic enrollment.	<input type="radio"/>	<input type="radio"/>
User2 can enroll Device1 in Intune by using automatic enrollment.	<input type="radio"/>	<input type="radio"/>

- A. Mastered  
 B. Not Mastered

**Answer:** A

**Explanation:**

Graphical user interface, text, application Description automatically generated

Reference: <https://docs.microsoft.com/en-us/mem/intune/enrollment/android-enroll> <https://powerautomate.microsoft.com/fr-fr/blog/mam-flow-mobile/>

**NEW QUESTION 49**

- (Exam Topic 3)

You have a Microsoft 365 E5 subscription. The subscription contains 25 computers that run Windows 11 and are enrolled in Microsoft Intune. You need to onboard the devices to Microsoft Defender for Endpoint. What should you create in the Microsoft Intune admin center?

- A. an attack surface reduction (ASR) policy  
 B. a security baseline  
 C. an endpoint detection and response (EDR) policy  
 D. an account protection policy  
 E. an antivirus policy

**Answer:** C

**Explanation:**

To onboard the devices to Microsoft Defender for Endpoint, you need to create an endpoint detection and response (EDR) policy in the Microsoft Intune admin center. This policy enables EDR capabilities on devices that are enrolled in Intune and allows you to configure various settings for EDR functionality. You can then assign the policy to groups of users or devices. References:

<https://docs.microsoft.com/en-us/mem/intune/protect/edr-windows>

**NEW QUESTION 53**

- (Exam Topic 3)

You have a Microsoft 365 E5 subscription that contains the users shown in the following table.

Name	Role
Admin1	Application admin
Admin2	Cloud application admin
Admin3	Office apps admin
Admin4	Security admin

In the Microsoft 365 Apps admin center, you create a Microsoft Office customization. Which users can download the Office customization file from the admin center?

- A. Admin1, Admin2, Admin3. and Admin4
- B. Admin1, Admin2, and Admin3 only
- C. Admin3 only
- D. Admin3 and Admin4 only
- E. Admin1 and Admin3 only

**Answer:** B

**Explanation:**

\* Admin1

An application admin has full access to enterprise applications, applications registrations, and application proxy settings.

\* Admin2

Mark your app as publisher verified.

In Azure AD this user must be a member of one of the following roles: Application Admin, Cloud Application Admin, or Global Admin.

\* Admin3

Office Apps admin - Assign the Office Apps admin role to users who need to do the following:

- Use the Office cloud policy service to create and manage cloud-based policies for Office
- Create and manage service requests
- Manage the What's New content that users see in their Office apps
- Monitor service health

Reference:

Office Apps admin - Assign the Office Apps admin role to users who need to do the following <https://docs.microsoft.com/en-us/azure/active-directory/develop/mark-app-as-publisher-verified>

**NEW QUESTION 58**

- (Exam Topic 3)

You have an Azure Active Directory (Azure AD) tenant that contains the users shown in the following table.

Name	Member of
User1	Group1
User2	Group2

You have devices enrolled in Microsoft Intune as shown in the following table.

Name	Platform	Member of
Device1	Windows 10	Group1
Device2	Android	Group1
Device3	iOS	Group2

From Intune, you create and send a custom notification named Notification1 to Group1.

For each of the following statements, select Yes if the statement is true. Otherwise, select No.

NOTE: Each correct selection is worth one point.

Statements	Yes	No
User1 receives Notification1 on Device1.	<input type="radio"/>	<input type="radio"/>
User2 receives Notification1 on Device2.	<input type="radio"/>	<input type="radio"/>
User1 receives Notification1 on Device3.	<input type="radio"/>	<input type="radio"/>

- A. Mastered
- B. Not Mastered

**Answer:** A

**Explanation:**

A screenshot of a computer Description automatically generated with medium confidence

Reference:

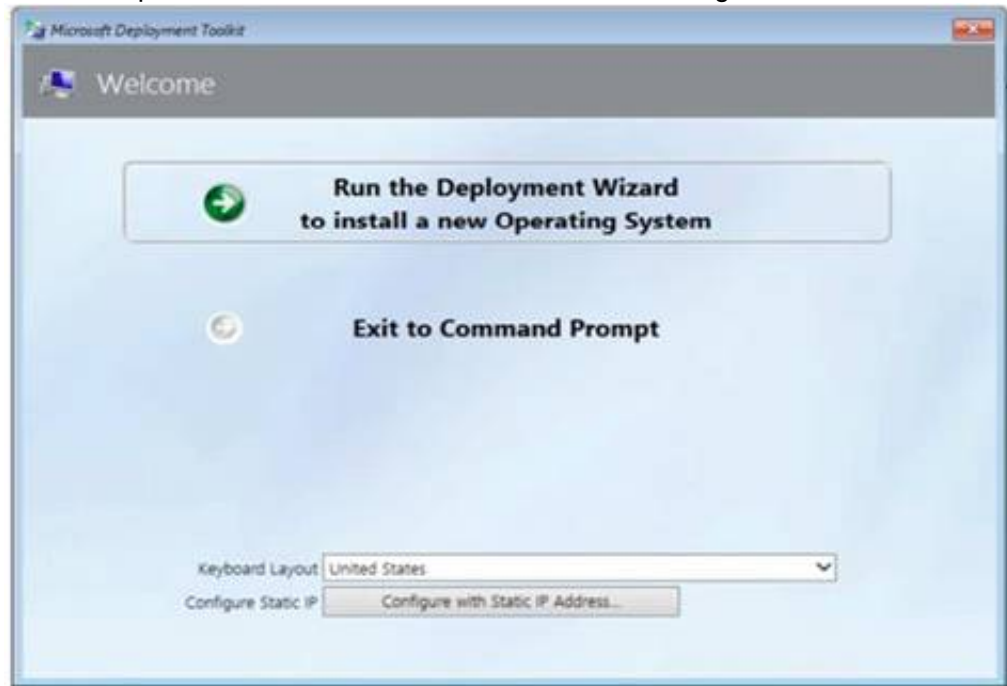
<https://docs.microsoft.com/en-us/mem/intune/remote-actions/custom-notifications>

**NEW QUESTION 63**

- (Exam Topic 3)



You have a Microsoft Deployment Toolkit (MDT) server named MDT1.  
When computers start from the LiteTouchPE\_x64.iso image and connect to MDT1. the welcome screen appears as shown In the following exhibit.



You need to prevent the welcome screen from appearing when the computers connect to MDT1.  
Which three actions should you perform in sequence? To answer move the appropriate actions from the list of actions to the answer area and arrange them in the correct order.

Actions

Modify the CustomSettings.ini file.

Update the deployment share.

Modify the Bootstrap.ini file.

Replace the ISO image.

Modify the task sequence.

Answer Area

>

<

- A. Mastered
- B. Not Mastered

Answer: A

Explanation:

Box 1: Modify the Bootstrap.ini file.  
Add this to your bootstrap.ini file and then update the deployment share and use the new boot media created in that process:  
SkipBDDWelcome=YES  
Box 2: Modify the CustomSettings.ini file. SkipBDDWelcome  
Indicates whether the Welcome to Windows Deployment wizard page is skipped.  
For this property to function properly it must be configured in both CustomSettings.ini and BootStrap.ini. BootStrap.ini is processed before a deployment share (which contains CustomSettings.ini) has been selected.  
Box 3: Update the deployment share. Reference:  
<https://docs.microsoft.com/en-us/mem/configmgr/mdt/toolkit-reference#table-6-deployment-wizard-pages>

NEW QUESTION 68

- (Exam Topic 3)  
You have a Microsoft 365 subscription that contains 1,000 Windows 11 devices enrolled in Microsoft Intune.  
You plan to create and monitor the results of a compliance policy used to validate the BIOS version of the devices.  
Which four actions should you perform in sequence? To answer, move the appropriate actions from the list of actions to the answer area and arrange them in the correct order.

Actions

Review the compliance dashboard for results.

Create and assign a compliance policy that has System Security settings configured.

Review the Conditional Access Insights and Reporting workbook for results.

Create a PowerShell discovery script and a JSON file.

Upload the PowerShell script to Intune.

Upload the JSON file to Azure AD.

Create and assign a custom compliance policy.

Answer Area

>

<

↑

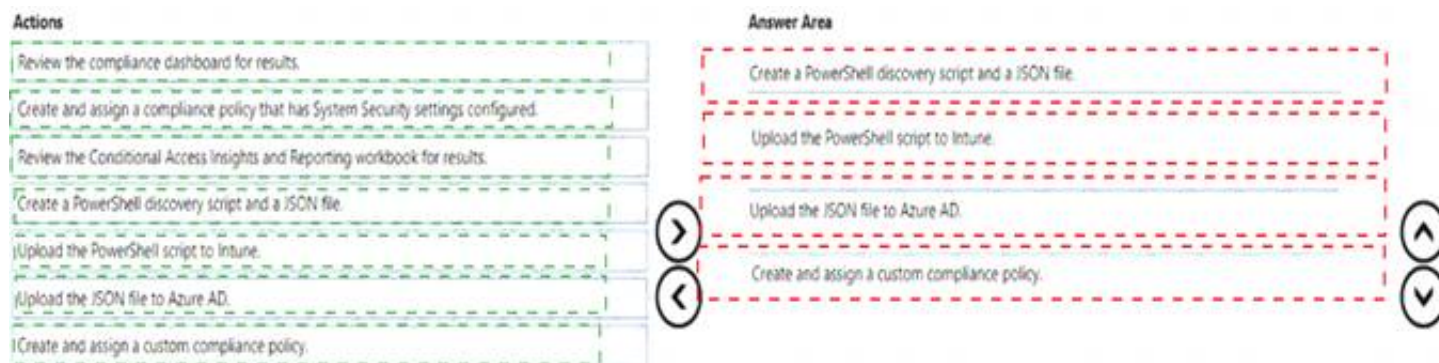
↓

- A. Mastered
- B. Not Mastered

Answer: A

Explanation:





### NEW QUESTION 69

- (Exam Topic 3)

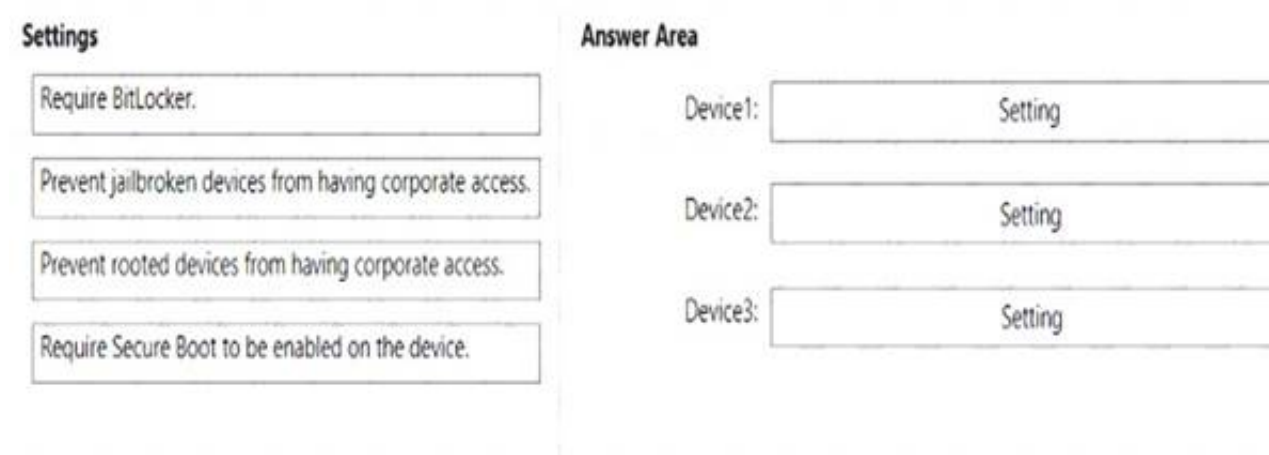
You have a Microsoft 365 subscription that contains the devices shown in the following table.

Name	Type
Device1	Windows 10
Device2	iOS
Device3	Android Enterprise

You need to ensure that only devices running trusted firmware or operating system builds can access network resources.

Which compliance policy setting should you configure for each device? To answer, drag the appropriate settings to the correct devices. Each setting may be used once, more than once, or not at all. You may need to drag the split bar between panes or scroll to view content.

NOTE: Each correct selection is worth one point.



- A. Mastered
- B. Not Mastered

**Answer:** A

### Explanation:

Box 1:

Device Compliance settings for Windows 10/11 in Intune

There are the different compliance settings you can configure on Windows devices in Intune. As part of your mobile device management (MDM) solution, use these settings to require BitLocker, set a minimum and maximum operating system, set a risk level using Microsoft Defender for Endpoint, and more.

Note: Windows Health Attestation Service evaluation rules Require BitLocker:

Windows BitLocker Drive Encryption encrypts all data stored on the Windows operating system volume. BitLocker uses the Trusted Platform Module (TPM) to help protect the Windows operating system and user

data. It also helps confirm that a computer isn't tampered with, even if its left unattended, lost, or stolen. If the computer is equipped with a compatible TPM, BitLocker uses the TPM to lock the encryption keys that protect the data. As a result, the keys can't be accessed until the TPM verifies the state of the computer.

Not configured (default) - This setting isn't evaluated for compliance or non-compliance.

Require - The device can protect data that's stored on the drive from unauthorized access when the system is off, or hibernates.

Box 2: Prevent jailbroken devices from having corporate access Device Compliance settings for iOS/iPadOS in Intune

There are different compliance settings you can configure on iOS/iPadOS devices in Intune. As part of your mobile device management (MDM) solution, use these settings to require an email, mark rooted (jailbroken) devices as not compliant, set an allowed threat level, set passwords to expire, and more.

Device Health Jailbroken devices

Supported for iOS 8.0 and later

Not configured (default) - This setting isn't evaluated for compliance or non-compliance. Block - Mark rooted (jailbroken) devices as not compliant.

Box 3: Prevent rooted devices from having corporate access. Device compliance settings for Android Enterprise in Intune

There are different compliance settings you can configure on Android Enterprise devices in Intune. As part of your mobile device management (MDM) solution, use these settings to mark rooted devices as not compliant, set an allowed threat level, enable Google Play Protect, and more.

Device Health - for Personally-Owned Work Profile Rooted devices

Not configured (default) - This setting isn't evaluated for compliance or non-compliance. Block - Mark rooted devices as not compliant.

Reference: <https://docs.microsoft.com/en-us/mem/intune/protect/compliance-policy-create-windows> <https://docs.microsoft.com/en-us/mem/intune/protect/compliance-policy-create-ios>

### NEW QUESTION 71

- (Exam Topic 3)

You use Windows Admin Center to remotely administer computers that run Windows 10.

When connecting to Windows Admin Center, you receive the message shown in the following exhibit.

## This site is not secure

This might mean that someone's trying to fool you or steal any info you send to the server. You should close this site immediately.

 [Go to your Start page](#)

Details

Your PC doesn't trust this website's security certificate.

Error Code: DLG\_FLAGS\_INVALID\_CA

[Go on to the webpage](#) (Not recommended)

You need to prevent the message from appearing when you connect to Windows Admin Center. To which certificate store should you import the certificate?

- A. Personal
- B. Trusted Root Certification Authorities
- C. Client Authentication Issuers

**Answer:** B

### NEW QUESTION 73

- (Exam Topic 3)

Your company standardizes on Windows 10 Enterprise for all users.

Some users purchase their own computer from a retail store. The computers run Windows 10 Pro.

You need to recommend a solution to upgrade the computers to Windows 10 Enterprise, join the computers to Azure AD, and install several Microsoft Store apps.

The solution must meet the following

requirements:

- Ensure that any applications installed by the users are retained.
- Minimize user intervention.

What is the best recommendation to achieve the goal? More than one answer choice may achieve the goal. Select the BEST answer.

- A. Windows Autopilot
- B. Microsoft Deployment Toolkit (MDT)
- C. a Windows Configuration Designer provisioning package
- D. Windows Deployment Services (WDS)

**Answer:** A

### NEW QUESTION 78

- (Exam Topic 3)

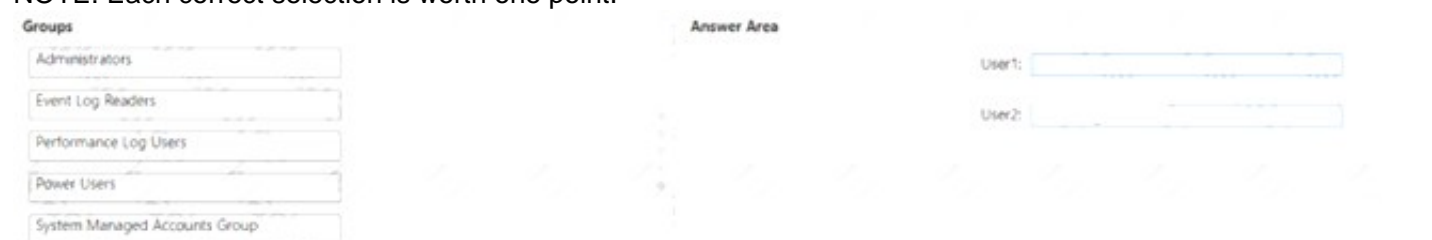
You have a computer that runs Windows 10 and contains two local users named User1 and User2. You need to ensure that the users can perform the following actions:

- User 1 must be able to adjust the date and time.
- User2 must be able to clear Windows logs.

The solution must use the principle of least privilege.

To which group should you add each user? To answer, drag the appropriate groups to the correct users. Each group may be used once, more than once, or not at all. You may need to drag the split bar between panes or scroll to view content.

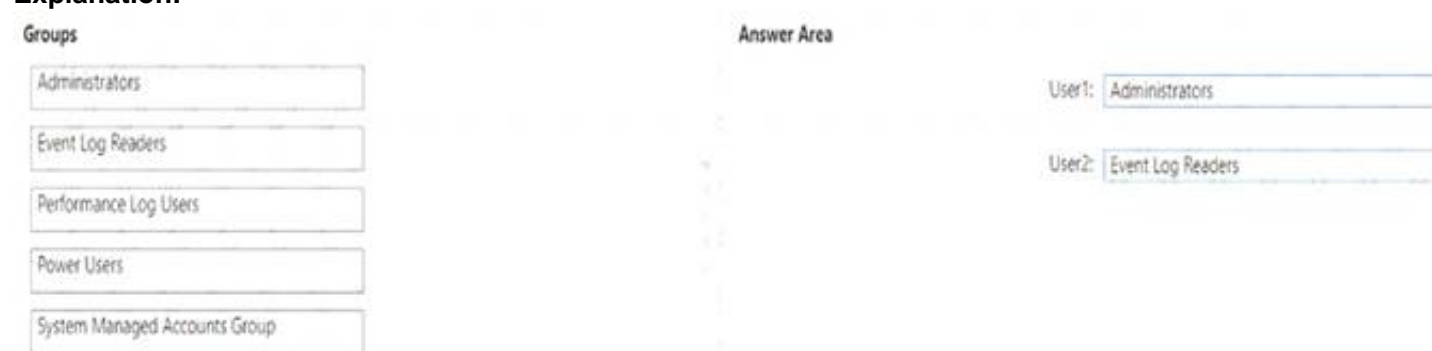
NOTE: Each correct selection is worth one point.



- A. Mastered
- B. Not Mastered

**Answer:** A

### Explanation:



### NEW QUESTION 79

- (Exam Topic 3)

You have a Microsoft 365 E5 subscription that contains a user named User1 and uses Microsoft Intune Suite. You use Microsoft Intune to manage devices.

You have a device named Device1 that is enrolled in Intune.

You need to ensure that User1 can use Remote Help from the Intune admin center for Device1. Which three actions should you perform? Each correct answer presents part of the solution. NOTE: Each correct selection is worth one point.

- A. Deploy the Remote Help app to Device1.
- B. Assign the Help Desk Operator role to User1.
- C. Assign the Intune Administrator role to User1.
- D. Assign a Microsoft 365 E5 license to User1.
- E. Rerun device onboarding on Device1.
- F. Assign the Remote Help add-on license to User1.

**Answer:** ABF

### NEW QUESTION 84

- (Exam Topic 3)

Your company uses Microsoft Defender for Endpoint Microsoft Defender for Endpoint includes the device groups shown in the following table.

Rank	Name	Members
1	Group1	Tag Equals demo And OS In Windows 10
2	Group2	Tag Equals demo
3	Group3	Domain Equals adatum.com
4	Group4	Domain Equals adatum.com And OS In Windows 10
5	Group5	Name starts with COMP
Last	Ungrouped machines (default)	Not applicable

You onboard a computer to Microsoft Defender for Endpoint as shown in the following exhibit.



What is the effect of the Microsoft Defender for Endpoint configuration? To answer, select the appropriate options in the answer area.

NOTE: Each correct selection is worth one point.

### Answer Area

Computer1 will be a member of:

▼

- Group3 only
- Group4 only
- Grou5 only
- Group3, Group4, and Group5 only

If you add the tag demo to Computer1, Computer1 will be a member of:

▼

- Group1 only
- Group2 only
- Group1 and Group2 only
- Group1, Group2, Group3, Group4, and Group5

- A. Mastered
- B. Not Mastered

**Answer:** A

**Explanation:**

### Answer Area

Computer1 will be a member of:

▼

- Group3 only
- Group4 only
- Grou5 only
- Group3, Group4, and Group5 only

If you add the tag demo to Computer1, Computer1 will be a member of:

▼

- Group1 only
- Group2 only
- Group1 and Group2 only
- Group1, Group2, Group3, Group4, and Group5



NEW QUESTION 89

- (Exam Topic 3)

You have a Microsoft 365 E5 subscription.

You create a new update rings policy named Policy1 as shown in the following exhibit.

Update ring settings <a href="#">Edit</a>	
Update settings	
Microsoft product updates	Allow
Windows drivers	Allow
Quality update deferral period (days)	0
Feature update deferral period (days)	30
Upgrade Windows 10 devices to Latest Windows 11 release	No
Set feature update uninstall period (2 - 60 days)	10
Servicing channel	General Availability channel
User experience settings	
Automatic update behavior	Auto install at maintenance time
Active hours start	8 AM
Active hours end	5 PM
Restart checks	Allow
Option to pause Windows updates	Enable
Option to check for Windows updates	Enable
Change notification update level	Use the default Windows Update notifications
Use deadline settings	Allow
Deadline for feature updates	30
Deadline for quality updates	0
Grace period	0
Auto reboot before deadline	No

Use the drop-down menus to select the answer choice that completes each statement based on the information presented in the graphic.

NOTE: Each correct selection is worth one point,

Answer Area

Updates that contain fixes and improvements to existing Windows functionality [answer choice].

can be deferred for 30 days

can be deferred indefinitely

can be deferred for 30 days

will be installed immediately

Updates that contain new Windows functionality will be installed within [answer choice] of release.

1 day

1 day

30 days

60 days

- A. Mastered
- B. Not Mastered

Answer: A

Explanation:

\*Updates that contain fixes and improvements to existing Windows functionality can be deferred for 30 days. This is because the update rings policy named Policy1 has the “Quality updates deferral period (days)” setting set to 30. This means that quality updates, which include fixes and improvements to existing Windows functionality, can be deferred for up to 30 days from the date they are released by Microsoft. After 30 days, the devices will automatically install the quality updates. References:

https://docs.microsoft.com/en-us/mem/intune/protect/windows-update-for-business-configure

\*Updates that contain new Windows functionality will be installed within 60 days of release.

This is because the update rings policy named Policy1 has the “Feature updates deferral period (days)” setting set to 60. This means that feature updates, which include new Windows functionality, can be deferred for up to 60 days from the date they are released by Microsoft. After 60 days, the devices will automatically install the feature updates. References:

https://docs.microsoft.com/en-us/mem/intune/protect/windows-update-for-business-configure

NEW QUESTION 91

- (Exam Topic 3)

Note: This question is part of a series of questions that present the same scenario. Each question in the series contains a unique solution that might meet the stated goals. Some question sets might have more than one correct solution, while others might not have a correct solution.

After you answer a question in this section, you will NOT be able to return to it. As a result, these questions will not appear in the review screen.

Your network contains an Active Directory domain. The domain contains a computer named Computer1 that runs Windows 8.1.

Computer1 has apps that are compatible with Windows 10.

You need to perform a Windows 10 in-place upgrade on Computer1.

Solution: You copy the Windows 10 installation media to a Microsoft Deployment Toolkit (MDT) deployment share. You create a task sequence, and then you run the MDT deployment wizard on Computer1.

Does this meet the goal?



- A. Yes
- B. No

**Answer:** B

#### NEW QUESTION 95

- (Exam Topic 3)

You have a Microsoft 365 E5 subscription that contains 10 Android Enterprise devices. Each device has a corporate-owned work profile and is enrolled in Microsoft Intune.

You need to configure the devices to run a single app in kiosk mode.

Which Configuration settings should you modify in the device restrictions profile?

- A. General
- B. Users and Accounts
- C. System security
- D. Device experience

**Answer:** D

#### Explanation:

To configure the devices to run a single app in kiosk mode, you need to modify the Device experience settings in the device restrictions profile. You can specify the app package name and activity name for the app that you want to run in kiosk mode. References:

<https://docs.microsoft.com/en-us/mem/intune/configuration/device-restrictions-android-for-work#device-experie>

#### NEW QUESTION 96

- (Exam Topic 3)

You have a Microsoft 365 E5 subscription that contains 1,000 Windows 11 devices. All the devices are enrolled in Microsoft Intune.

You plan to integrate Intune with Microsoft Defender for Endpoint.

You need to establish a service-to-service connection between Intune and Defender for Endpoint. Which settings should you configure in the Microsoft Endpoint Manager admin center?

- A. Connectors and tokens
- B. Premium add-ons
- C. Microsoft Tunnel Gateway
- D. Tenant enrollment

**Answer:** A

#### Explanation:

Microsoft Defender for Endpoint – Important Service and Endpoint Settings You Should Configure Right Now.

As a prerequisite, however, head to tenant administration > connectors and tokens > Microsoft Defender for Endpoint and confirm the connection is enabled. You previously set this up in the advanced settings of Microsoft 365 Defender.

Reference: <https://petri.com/microsoft-defender-for-endpoint-which-settings-configure-right-now/>

#### NEW QUESTION 98

.....

## THANKS FOR TRYING THE DEMO OF OUR PRODUCT

Visit Our Site to Purchase the Full Set of Actual MD-102 Exam Questions With Answers.

We Also Provide Practice Exam Software That Simulates Real Exam Environment And Has Many Self-Assessment Features. Order the MD-102 Product From:

<https://www.2passeasy.com/dumps/MD-102/>

## Money Back Guarantee

### MD-102 Practice Exam Features:

- \* MD-102 Questions and Answers Updated Frequently
- \* MD-102 Practice Questions Verified by Expert Senior Certified Staff
- \* MD-102 Most Realistic Questions that Guarantee you a Pass on Your FirstTry
- \* MD-102 Practice Test Questions in Multiple Choice Formats and Updatesfor 1 Year