

AZ-801 Dumps

Configuring Windows Server Hybrid Advanced Services

<https://www.certleader.com/AZ-801-dumps.html>



NEW QUESTION 1**HOTSPOT**

You need to implement a security policy solution to authorize the applications. The solution must meet the security requirements.

Which service should you use to enforce the security policy, and what should you use to manage the policy settings? To answer, select the appropriate options in the answer area.

NOTE: Each correct selection is worth one point.

Hot Area:

Answer Area

Enforce the security policy:

Microsoft Defender Application Control
Microsoft Defender Application Guard
Microsoft Defender Credential Guard
Microsoft Defender for Endpoint

Manage the policy settings:

Configuration profiles in Microsoft Intune
Compliance policies in Microsoft Intune
Group Policy Objects (GPOs)

- A. Mastered
- B. Not Mastered

Answer: A

Explanation:

Reference: <https://docs.microsoft.com/en-us/windows/security/threat-protection/windows-defender-application-control/wdacand-applockeroverview>

NEW QUESTION 2

You are planning the deployment of Microsoft Sentinel.

Which type of Microsoft Sentinel data connector should you use to meet the security requirements?

- A. Threat Intelligence - TAXII
- B. Azure Active Directory
- C. Microsoft Defender for Cloud
- D. Microsoft Defender for Identity

Answer: D

Explanation:

Reference:

<https://docs.microsoft.com/en-us/defender-for-identity/cas-isp-legacy-protocols>

NEW QUESTION 3

You need to back up Server 4 to meet the technical requirements.

What should you do first?

- A. Deploy Microsoft Azure Backup Server (MABS).
- B. Configure Windows Server Backup.
- C. Install the Microsoft Azure Recovery Services (MARS) agent.
- D. Configure Storage Replica.

Answer: C

Explanation:

Reference: <https://docs.microsoft.com/en-us/azure/backup/install-mars-agent>

NEW QUESTION 4

You need to meet the technical requirements for Cluster3.

What should you include in the solution?

- A. Enable integration services on all the virtual machines.
- B. Add a Windows Server server role.
- C. Configure a fault domain for the cluster.
- D. Add a failover cluster role.

Answer: D

Explanation:

The Hyper-V replica broker role is required on the cluster.

Reference: <https://docs.microsoft.com/en-us/virtualization/community/team-blog/2012/20120327-why-is-the-hyper-v-replicabroker-required>

NEW QUESTION 5

HOTSPOT

You are planning the DHCP1 migration to support the DHCP migration plan.

Which two PowerShell cmdlets should you run on DHCP1, and which two PowerShell cmdlets should you run on DHCP2?

To answer, drag the appropriate cmdlets to the correct servers. Each cmdlet may be used once, more than once, or not at all. You may need to drag the split bar between panes or scroll to view content.

NOTE: Each correct selection is worth one point.

Select and Place:

Cmdlets	Answer Area
Add-DhcpServerInDC	DHCP1: <input type="text" value="Cmdlet"/>
Add-DhcpServerv4Scope	<input type="text" value="Cmdlet"/>
Export-DhcpServer	
Import-DhcpServer	DHCP2: <input type="text" value="Cmdlet"/>
Remove-DhcpServerInDC	<input type="text" value="Cmdlet"/>
Remove-DhcpServerv4Scope	

- A. Mastered
- B. Not Mastered

Answer: A

Explanation:

Reference: <https://theitbros.com/how-to-migrate-dhcp-to-windows-server-2016/>

NEW QUESTION 6

You need to meet the technical requirements for User1.

To which group in contoso.com should you add User1?

- A. Domain Admins
- B. Account Operators
- C. Schema Admins
- D. Backup Operators

Answer: A

NEW QUESTION 7

Note: This question is part of a series of questions that present the same scenario. Each question in the series contains a unique solution that might meet the stated goals. Some question sets might have more than one correct solution, while others might not have a correct solution.

After you answer a question in this section, you will NOT be able to return to it. As a result, these questions will not appear in the review screen.

You have a server named Server1 that runs Windows Server.

You need to ensure that only specific applications can modify the data in protected folders on Server1.

Solution: From Virus & threat protection, you configure Controlled folder access.

Does this meet the goal?

- A. Yes
- B. No

Answer: A

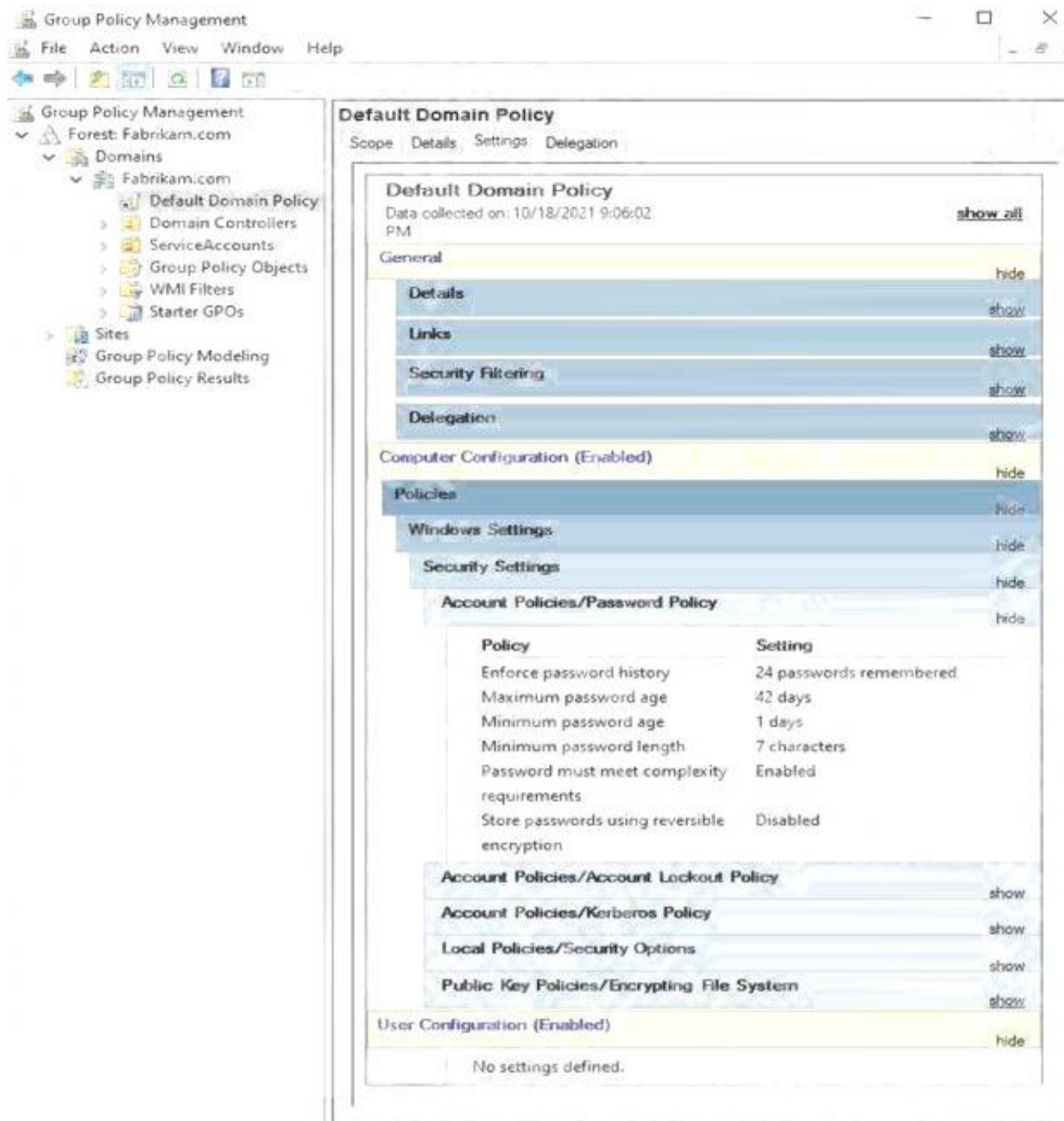
Explanation:

Reference: <https://docs.microsoft.com/en-us/microsoft-365/security/defender-endpoint/customize-controlledfolders?view=o365-worldwide>

NEW QUESTION 8

HOTSPOT

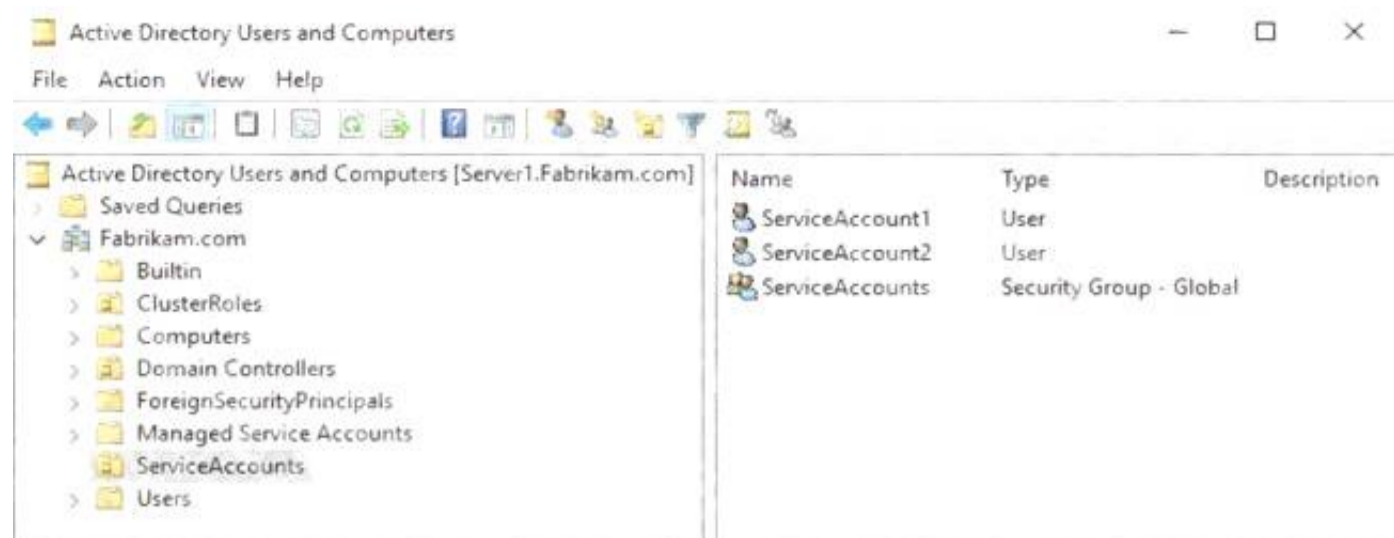
The Default Domain Policy Group Policy Object (GPO) is shown in the GPO exhibit. (Click the GPO tab.)



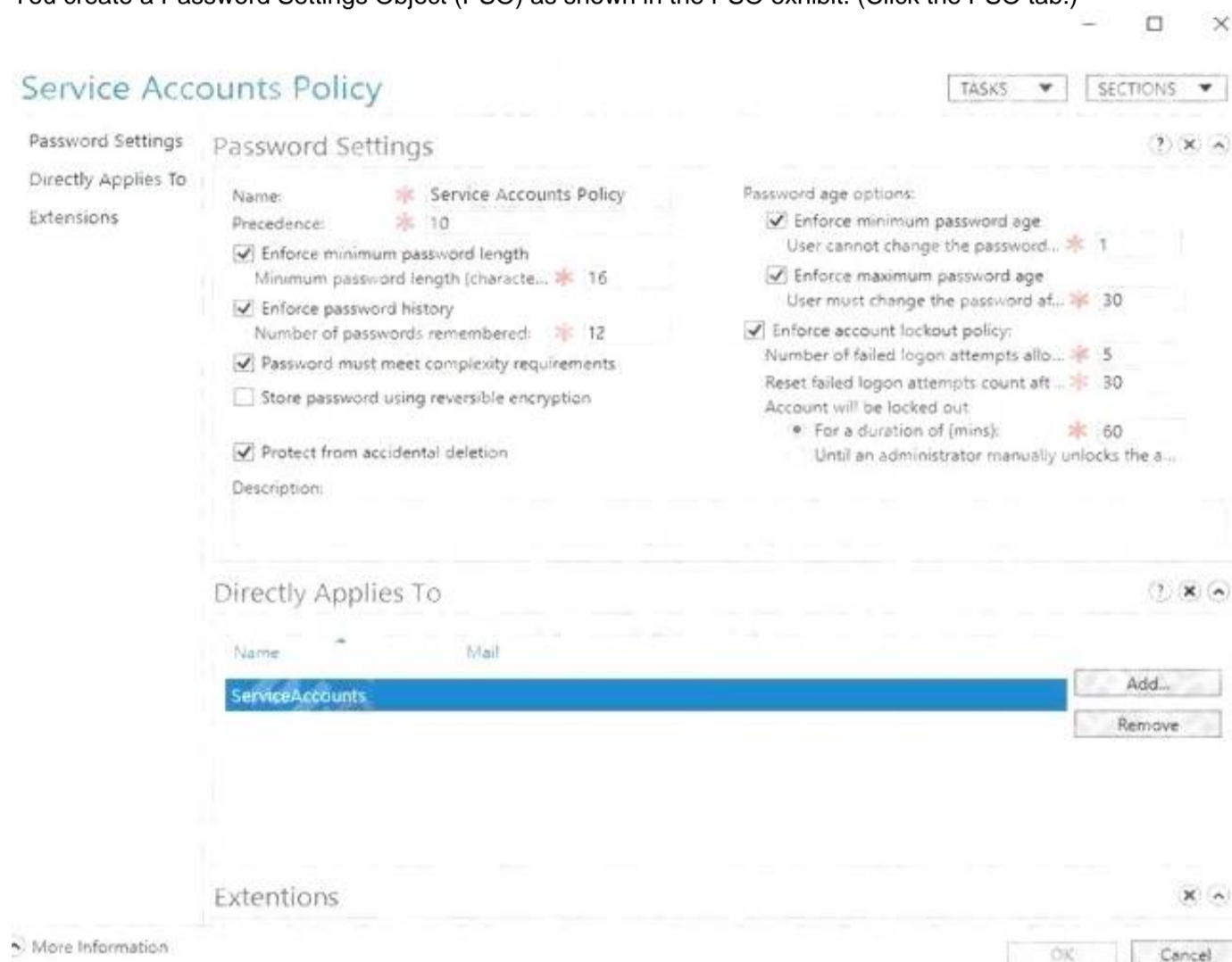
The members of a group named Service Accounts are shown in the Group exhibit. (Click the Group tab.)



An organizational unit (OU) named ServiceAccounts is shown in the OU exhibit. (Click the OU tab.)



You create a Password Settings Object (PSO) as shown in the PSO exhibit. (Click the PSO tab.)



For each of the following statements, select Yes if the statement is true. Otherwise, select No.

NOTE: Each correct selection is worth one point.

Hot Area:

Answer Area

Statements	Yes	No
The password of ServiceAccount1 must be at least 16 characters long.	<input type="radio"/>	<input type="radio"/>
The password of ServiceAccount2 must be at least 16 characters long.	<input type="radio"/>	<input type="radio"/>
Accounts that have the Service Accounts Policy applied can change their password to P@\$\$w0rd1.	<input type="radio"/>	<input type="radio"/>

- A. Mastered
- B. Not Mastered

Answer: A

Explanation:

Reference: https://docs.microsoft.com/en-us/windows-server/identity/ad-ds/get-started/adac/introduction-to-active-directoryadministrativecenterenhancements--level-100-#fine_grained_pswd_policy_mgmt

NEW QUESTION 9

DRAG DROP

Your network contains an Active Directory Domain Services (AD DS) domain.

You need to implement a solution that meets the following requirements:

Ensures that the members of the Domain Admins group are allowed to sign in only to domain controllers Ensures that the lifetime of Kerberos

Ticket Granting Ticket (TGT) for the members of the Domain Admins group is limited to one hour Which three actions should you perform in sequence? To answer,

move the appropriate actions from the list of actions to the answer area and arrange them in the correct order.

Select and Place:

Actions
Create a Dynamic Access Control central access policy.
Configure the Kerberos Policy settings for the Default Domain Policy Group Policy Object (GPO).
Create a Dynamic Access Control claim type.
Create an authentication policy.
Assign the authentication policy silo to user and computer accounts.
Create an authentication policy silo.

Answer Area

- A. Mastered
B. Not Mastered

Answer: A

Explanation:

Reference: <https://docs.microsoft.com/en-us/windows-server/identity/ad-ds/manage/how-to-configure-protected-accounts>

NEW QUESTION 10

HOTSPOT

Your network contains an Active Directory Domain Services (AD DS) domain named contoso.com. The domain contains the organizational units (OUs) shown in the following table.

Name	Contents
Domain Controllers	All the domain controllers in the domain
Domain Servers	All the servers that run Windows Server in the domain
Domain Client Computers	All the client computers that run Windows 10 in the domain
Domain Users	All the users in the domain

In the domain, you create the Group Policy Objects (GPOs) shown in the following table.

Name	IPsec setting
GPO1	Require authentication by using Kerberos V5 for inbound connections
GPO2	Request authentication by using Kerberos V5 for inbound connections
GPO3	Require authentication by using X.509 certificates for inbound connections
GPO4	Request authentication by using X.509 certificates for inbound connections

You need to implement IPsec authentication to ensure that only authenticated computer accounts can connect to the members in the domain.

The solution must minimize administrative effort.

Which GPOs should you apply to the Domain Controllers OU and the Domain Servers OU? To answer, select the appropriate options in the answer area.

NOTE: Each correct selection is worth one point.

Hot Area:

Answer Area

Domain Controllers:

▼

GPO1

GPO2

GPO3

GPO4

Domain Servers:

▼

GPO1

GPO2

GPO3

GPO4

- A. Mastered
B. Not Mastered

Answer: A

Explanation:

Reference: <https://docs.microsoft.com/en-us/windows/security/threat-protection/windows-firewall/configure-authenticationmethods>

NEW QUESTION 10

You have 10 servers that run Windows Server in a workgroup.

You need to configure the servers to encrypt all the network traffic between the servers. The solution must be as secure as possible.

Which authentication method should you configure in a connection security rule?

- A. NTLMv2
- B. pre-shared key
- C. Kerberos V5
- D. computer certificate

Answer: D

Explanation:

Reference: <https://docs.microsoft.com/en-us/windows/security/threat-protection/windows-firewall/create-an-authenticationrequest-rule>

NEW QUESTION 14

Your network contains an Active Directory Domain Services (AD DS) domain. The domain contains two servers named Server1 and Server2 that run Windows Server.

You need to ensure that you can use the Computer Management console to manage Server2. The solution must use the principle of least privilege.

Which two Windows Defender Firewall with Advanced Security rules should you enable on Server2? Each correct answer presents part of the solution.

NOTE: Each correct selection is worth one point.

- A. the COM+ Network Access (DCOM-In) rule
- B. all the rules in the Remote Event Log Management group
- C. the Windows Management Instrumentation (WMI-In) rule
- D. the COM+ Remote Administration (DCOM-In) rule
- E. the Windows Management Instrumentation (DCOM-In) rule

Answer: AB

Explanation:

Reference: <https://docs.microsoft.com/en-us/windows-server/administration/server-manager/configure-remote-managementin-servermanager>

NEW QUESTION 16

You have a server that runs Windows Server. The server is configured to encrypt all incoming traffic by using a connection security rule.

You need to ensure that Server1 can respond to the unencrypted tracert commands initiated from computers on the same network.

What should you do from Windows Defender Firewall with Advanced Security?

- A. From the IPsec Settings, configure IPsec defaults.
- B. Create a new custom outbound rule that allows ICMPv4 protocol connections for all profiles.
- C. Change the Firewall state of the Private profile to Off.
- D. From the IPsec Settings, configure IPsec exemptions.

Answer: D

NEW QUESTION 17

You have an Azure virtual machine named VM1.

You enable Microsoft Defender SmartScreen on VM1.

You need to ensure that the SmartScreen messages displayed to users are logged.

What should you do?

- A. From a command prompt, run WinRM quickconfig.
- B. From the local Group Policy, modify the Advanced Audit Policy Configuration settings.
- C. From Event Viewer, enable the Debug log.
- D. From the Windows Security app, configure the Virus & threat protection settings.

Answer: C

Explanation:

Reference: <https://docs.microsoft.com/en-us/windows/security/threat-protection/microsoft-defender-smartscreen/microsoftdefendersmartscreenoverview>

NEW QUESTION 20

You have a failover cluster named Cluster1 that has the following configurations:

Number of nodes: 6

Quorum: Dynamic quorum

Witness: File share, Dynamic witness

What is the maximum number of nodes that can fail simultaneously while maintaining quorum?

- A. 1
- B. 2
- C. 3
- D. 4
- E. 5

Answer: C

Explanation:

Note this question is asking about nodes failing 'simultaneously', not nodes failing one after the other.

With six nodes and one witness, there are seven votes. To maintain quorum there needs to be four votes available (four votes is the majority of seven). This means that a minimum of three nodes plus the witness need to remain online for the cluster to function. Therefore, the maximum number of simultaneous failures is three.

Reference: <https://docs.microsoft.com/en-us/windows-server/storage/storage-spaces/understand-quorum>

NEW QUESTION 21

DRAG DROP

You have three servers named Server1, Server2, Server3 that run Windows Server and have the Hyper-V server role installed.

You plan to create a hyper-converged cluster to host Hyper-V virtual machines.

You need to ensure that you can store virtual machines in Storage Spaces Direct.

Which three actions should you perform in sequence? To answer, move the appropriate actions from the list of actions to the answer area and arrange them in the correct order.

Select and Place:

Actions	Answer Area
Create a failover cluster.	
Create a Distributed File System (DFS) namespace.	
Enable Storage Spaces Direct.	
Create a volume.	
Add a Scale-Out File Server for application role.	
Create a file share.	

- A. Mastered
- B. Not Mastered

Answer: A

Explanation:

Reference: <https://docs.microsoft.com/en-us/system-center/vmm/s2d-hyper-converged?view=sc-vmm-2019>

NEW QUESTION 24

You have a Storage Spaces Direct configuration that has persistent memory and contains the data volumes shown in the following table.

Name	File system
Volume1	NTFS
Volume2	ReFS

You plan to add data volumes to Storage Spaces Direct as shown in the following table.

Name	File system
Volume3	NTFS
Volume4	ReFS

On which volumes can you use direct access (DAX)?

- A. Volume3 only
- B. Volume4 only
- C. Volume1 and Volume3 only
- D. Volume2 and Volume4 only
- E. Volume3 and Volume4 only

Answer: A

Explanation:

DAX can only be used on one volume and the volume has to be NTFS. You could configure DAX on Volume1 (although that would require reformatting the volume) or Volume3. However, 'Volume1 only' isn't an answer option so Volume3 is the correct answer.

'Volume1 and Volume3' is incorrect because of the single volume limitation.

Reference: <https://docs.microsoft.com/en-us/windows-server/storage/storage-spaces/persistent-memory-direct-access>

NEW QUESTION 25

DRAG DROP

You have two physical servers named AppSrv1 and AppSrv2 and an unconfigured server named Server1. All the servers run Windows Server.

Only Server1 can access the internet.

You plan to use Azure Site Recovery to replicate AppSrv1 and AppSrv2 to Azure.

You need to deploy the required components to AppSrv1, AppSrv2, and Server1.

Which components should you deploy? To answer, drag the appropriate components to the correct servers. Each component may be used once, more than once, or not at all. You may need to drag the split bar between panes or scroll to view content.

NOTE: Each correct selection is worth one point.

Select and Place:

Components	Answer Area
The Azure Connected Machine agent	<p>To AppSvc1 and AppSvc2: <input type="text" value="10.10.10.11"/></p> <p>To Server1: <input type="text" value="10.10.10.12"/></p>
An Azure Site Recovery configuration server	
The Azure Site Recovery Mobility Service	
The Microsoft Azure Recovery Services (MARS) agent	

- A. Mastered
B. Not Mastered

Answer: A

Explanation:

Reference: <https://docs.microsoft.com/en-us/azure/site-recovery/physical-azure-architecture>
<https://docs.microsoft.com/enus/azure/siterecovery/ physical-azure-set-up-source>

NEW QUESTION 30

You have three Azure virtual machines named VM1, VM2, and VM3 that host a multitier application.
You plan to implement Azure Site Recovery.
You need to ensure that VM1, VM2, and VM3 fail over as a group.
What should you configure?

- A. an availability zone
B. a recovery plan
C. an availability set

Answer: B

Explanation:

Reference: <https://docs.microsoft.com/en-us/azure/site-recovery/site-recovery-overview>

NEW QUESTION 31

You have 200 Azure virtual machines.
You create a recovery plan in Azure Site Recovery to fail over all the virtual machines to an Azure region. The plan has three manual actions.
You need to replace one of the manual actions with an automated process.
What should you use?

- A. an Azure Desired State Configuration (DSC) virtual machine extension
B. an Azure Automation runbook
C. an Azure PowerShell function
D. a Custom Script Extension on the virtual machines

Answer: B

Explanation:

Reference:
<https://docs.microsoft.com/en-us/azure/site-recovery/recovery-plan-overview>

NEW QUESTION 32

You need to meet technical requirements for Share1.
What should you use?

- A. Storage Migration Service
B. File Server Resource Manager (FSRM)
C. Server Manager
D. Storage Replica

Answer: A

Explanation:

Reference: <https://docs.microsoft.com/en-us/windows-server/storage/storage-migration-service/overview>

NEW QUESTION 37

DRAG DROP

Your network contains an Active Directory Domain Services (AD DS) domain named contoso.com. The functional level of the forest and the domain is Windows Server 2012 R2. The domain contains the domain controllers shown in the following table.

Name	Operating system	FSMO role
DC1	Windows Server 2012 R2	All
DC2	Windows Server 2022	None
DC3	Windows Server 2019	None

You need to raise the forest functional level to Windows Server 2016. The solution must meet the following requirements:
Ensure that there are three domain controllers after you raises the level. Minimize how long the FSMO roles are unavailable.

Which three actions should you perform in sequence? To answer, move the appropriate actions from the list of actions to the answer area and arrange them in the correct order.

Select and Place:

Actions	Answer Area
Install the Active Directory Migration Tool (ADMT).	
Deploy an additional domain controller.	
Raise the domain and forest functional level.	
Upgrade DC3.	
Migrate computer accounts by using the Active Directory Migration Tool (ADMT).	
Upgrade DC1.	
Create a custom AD DS partition.	
Move the FSMO roles to DC2.	

- A. Mastered
B. Not Mastered

Answer: A

Explanation:

Actions	Answer Area
Install the Active Directory Migration Tool (ADMT).	Move the FSMO roles to DC2.
Deploy an additional domain controller.	Upgrade DC1.
	Raise the domain and forest functional level.
Upgrade DC3.	
Migrate computer accounts by using the Active Directory Migration Tool (ADMT).	
Create a custom AD DS partition.	

NEW QUESTION 39

DRAG DROP

You have a server named Server1 that runs Windows Server and has the Web Server (IIS) server role installed. Server1 hosts an ASP.NET Core web app named WebApp1 and the app's source files.

You install Docker on Server1.

You need to ensure that you can deploy WebApp1 to an Azure App Service web app from the Azure Container Registry.

Which three actions should you perform in sequence? To answer, move the appropriate actions from the list of actions to the answer area and arrange them in the correct order.

Select and Place:

Actions	Answer Area
Run the <code>docker push</code> command.	
Run the <code>docker run</code> command.	
Run the <code>docker build</code> command.	
Create a Dockerfile.	
Create an Azure Resource Manager (ARM) template.	
Run the <code>docker pull</code> command.	

- A. Mastered
B. Not Mastered

Answer: A

Explanation:

Step 1: Create a Dockerfile. This file contains instructions for the build process.

Step 2: Run the `docker build` command to create a container image.

Step 3: Run the docker push command to upload the image to Azure Container Registry.

NEW QUESTION 43

HOTSPOT

You have two servers that have the Web Server (IIS) server role installed. The servers are configured as shown in the following table.

Name	Operating system
Server1	Windows Server 2016
Server2	Windows Server 2022

Both servers are configured to enable website deployment by using the Web Deployment Tool. Server1 hosts a website named Site1 that has Web Deploy Publishing configured.

You plan to migrate Site1 to Server2.

You need to perform a pull synchronization of Site1 by using the Web Deployment Agent Service.

How should you complete the command? To answer, select the appropriate options in the answer area.

NOTE: Each correct selection is worth one point.

Hot Area:

Answer Area

<code>msdeploy -verb:sync -source:</code>	<code>-dest:</code>
<code>apphostconfig="Site1"</code>	<code>apphostconfig="Site1"</code>
<code>apphostconfig="Site1",computername=Server1</code>	<code>apphostconfig="Site1",computername=Server1</code>
<code>apphostconfig="Site1",computername=Server2</code>	<code>apphostconfig="Site1",computername=Server2</code>
<code>package=c:\site1.zip</code>	<code>package=c:\site1.zip</code>

- A. Mastered
B. Not Mastered

Answer: A

Explanation:

Reference: <https://docs.microsoft.com/en-us/iis/publish/using-web-deploy/synchronize-iis>

NEW QUESTION 47

DRAG DROP

Your network contains an Active Directory Domain Services (AD DS) domain. The domain contains a print server named Server1. All printers are deployed to users by using a Group Policy Object (GPO) named GPO1.

You deploy a new server named Server2.

You need to decommission Server1. The solution must meet the following requirements:

Migrate the shared printers to Server2 by using the Printer Migration Wizard.

Ensure that the users use the printers on Server2. Minimize downtime for the users.

Which four actions should you perform in sequence? To answer, move the appropriate actions from the list of actions to the answer area and arrange them in the correct order.

Select and Place:

Actions	Answer Area
Decommission Server1.	
Import the printers on Server2.	
Deploy Windows Server Hybrid Cloud Print.	
Export the printers on Server1.	
Update the service principal name (SPN) of each printer.	
Modify GPO1.	

- A. Mastered
B. Not Mastered

Answer: A

Explanation:

Reference: <https://docs.microsoft.com/en-us/archive/blogs/canitpro/step-by-step-migrating-print-servers-from-windowsserver-2008-towindowsserver-2012>

NEW QUESTION 51

Note: This question is part of a series of questions that present the same scenario. Each question in the series contains a unique solution that might meet the stated goals. Some question sets might have more than one correct solution, while others might not have a correct solution.

After you answer a question in this section, you will NOT be able to return to it. As a result, these questions will not appear in the review screen.

Your network contains a single-domain Active Directory Domain Services (AD DS) forest named contoso.com. The functional level of the forest is Windows Server 2012 R2. All domain controllers run Windows Server 2012 R2.

Sysvol replicates by using the File Replication Service (FRS).

You plan to replace the existing domain controllers with new domain controllers that will run Windows Server 2022.

You need to ensure that you can add the first domain controller that runs Windows Server 2022.

Solution: You migrate sysvol from FRS to Distributed File System (DFS) Replication.

Does this meet the goal?

- A. Yes
B. No

Answer: A

Explanation:

Reference:

<https://www.rebeladmin.com/2021/09/step-by-step-guide-active-directory-migration-from-windows-server-2008-r2-to-windows-server-2022/>**NEW QUESTION 52**

You have an on-premises network and an Azure virtual network.

You establish a Site-to-Site VPN connection from the on-premises network to the Azure virtual network, but the connection frequently disconnects.

You need to debug the IPsec tunnel from Azure.

Which Azure VPN Gateway diagnostic log should you review?

- A. GatewayDiagnosticLog
- B. RouteDiagnosticLog
- C. IKEDiagnosticLog
- D. TunnelDiagnosticLog

Answer: D**Explanation:**Reference: <https://docs.microsoft.com/en-us/azure/vpn-gateway/troubleshoot-vpn-with-azure-diagnostics>**NEW QUESTION 57**

You have an Azure virtual machine named VM1. Crash dumps for a process named Process1 are enabled for VM1.

When process1.exe on VM1 crashes, a technician must access the memory dump files on the virtual machine. The technician must be prevented from accessing the virtual machine.

To what should you provide the technician access?

- A. an Azure file share
- B. an Azure Log Analytics workspace
- C. an Azure Blob Storage container
- D. a managed disk

Answer: C**Explanation:**Reference: <https://docs.microsoft.com/en-us/azure/azure-monitor/agents/diagnostics-extension-overview>**NEW QUESTION 62**

You plan to deploy the Azure Monitor agent to 100 on-premises servers that run Windows Server.

Which parameters should you provide when you install the agent?

- A. the client ID and the secret of an Azure service principal
- B. the name and the access key of an Azure Storage account
- C. a connection string for an Azure SQL database
- D. the ID and the key of an Azure Log Analytics workspace

Answer: D**Explanation:**Reference: <https://docs.microsoft.com/en-us/windows-server/storage/storage-spaces/configure-azure-monitor>**NEW QUESTION 66**

You have five Azure virtual machines.

You need to collect performance data and Windows Event logs from the virtual machines. The data collected must be sent to an Azure Storage account.

What should you install on the virtual machines?

- A. the Azure Connected Machine agent
- B. the Azure Monitor agent
- C. the Dependency agent
- D. the Telegraf agent
- E. the Azure Diagnostics extension

Answer: E**Explanation:**Reference: <https://docs.microsoft.com/en-us/azure/azure-monitor/agents/diagnostics-extension-overview>**NEW QUESTION 69**

You have an Azure virtual machine named VM1.

You install an application on VM1, and then restart the virtual machine.

After the restart, you get the following error message: "Boot failure. Reboot and Select proper Boot Device or Insert Boot Media in selected Boot Device." You need to mount the operating system disk offline from VM1 to a temporary virtual machine to troubleshoot the issue.

Which command should you run in Azure CLI?

- A. az vm repair create
- B. az vm boot-diagnostics enable
- C. az vm capture
- D. az vm disk attach

Answer: A

Explanation:

Reference:

<https://docs.microsoft.com/en-us/cli/azure/vm/repair?view=azure-cli-latest>

NEW QUESTION 72

.....

Thank You for Trying Our Product

* 100% Pass or Money Back

All our products come with a 90-day Money Back Guarantee.

* One year free update

You can enjoy free update one year. 24x7 online support.

* Trusted by Millions

We currently serve more than 30,000,000 customers.

* Shop Securely

All transactions are protected by VeriSign!

100% Pass Your AZ-801 Exam with Our Prep Materials Via below:

<https://www.certleader.com/AZ-801-dumps.html>