

Exam Questions HPE0-J68

HPE Storage Solutions

<https://www.2passeasy.com/dumps/HPE0-J68/>

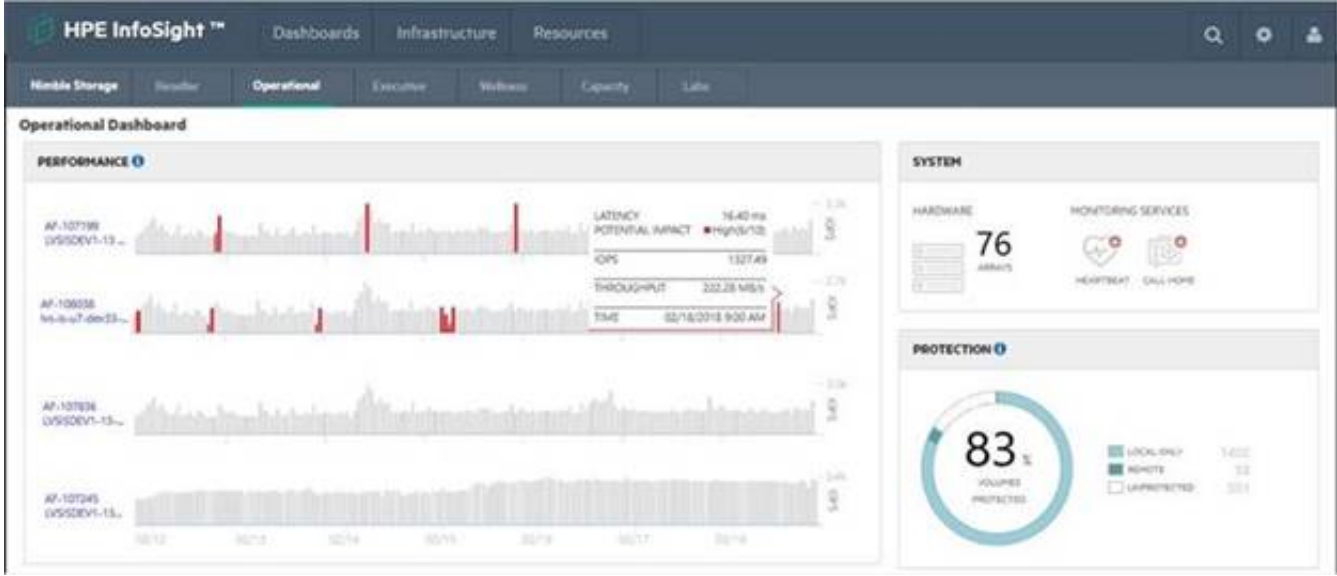


NEW QUESTION 1

- (Exam Topic 1)

A customer has a Nimble HF40 and needs to create a support ticket.

Click the option in the InfoSight portal where the customer can perform this task.

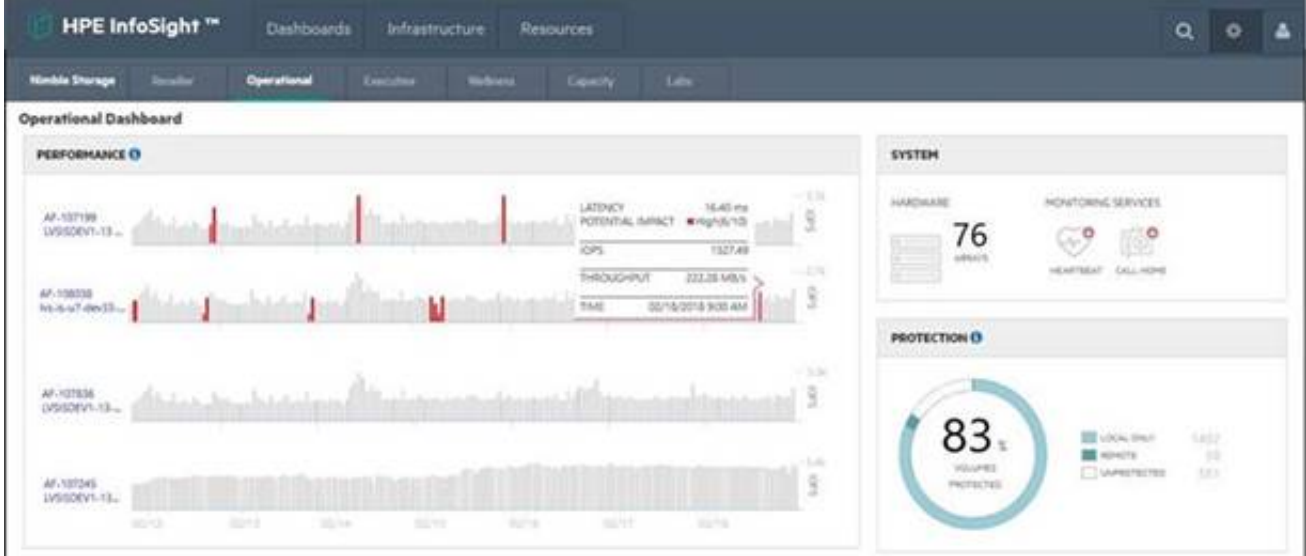


- A. Mastered
- B. Not Mastered

Answer: A

Explanation:

Graphical user interface, website, timeline Description automatically generated

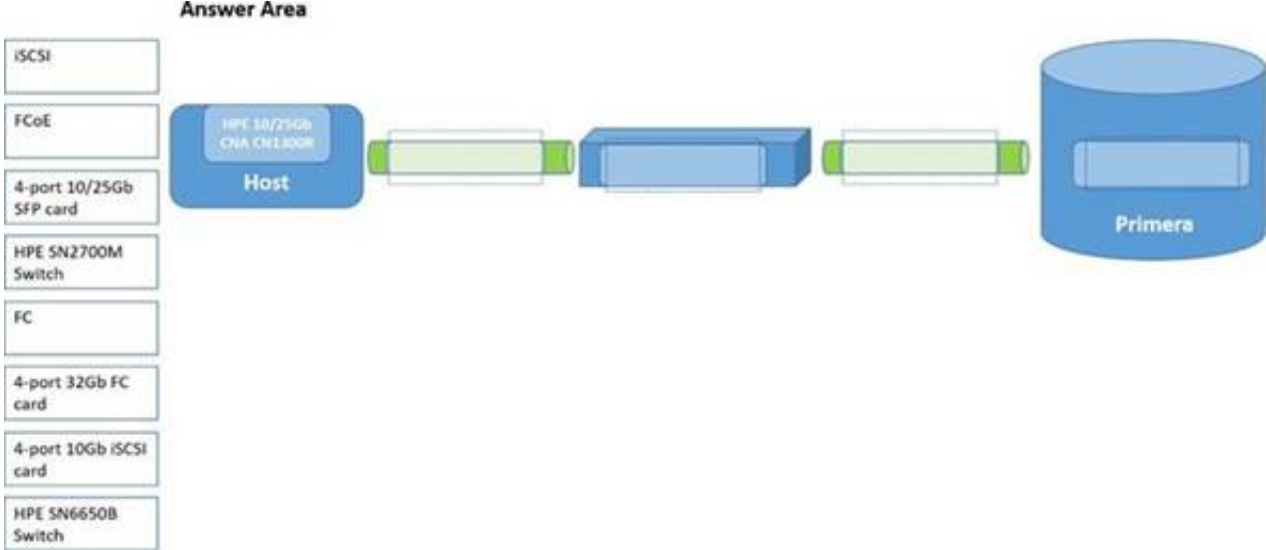


NEW QUESTION 2

- (Exam Topic 1)

A customer wants to implement a new storage network, but wants to retain the ability to connect with legacy fiber channel-based components.

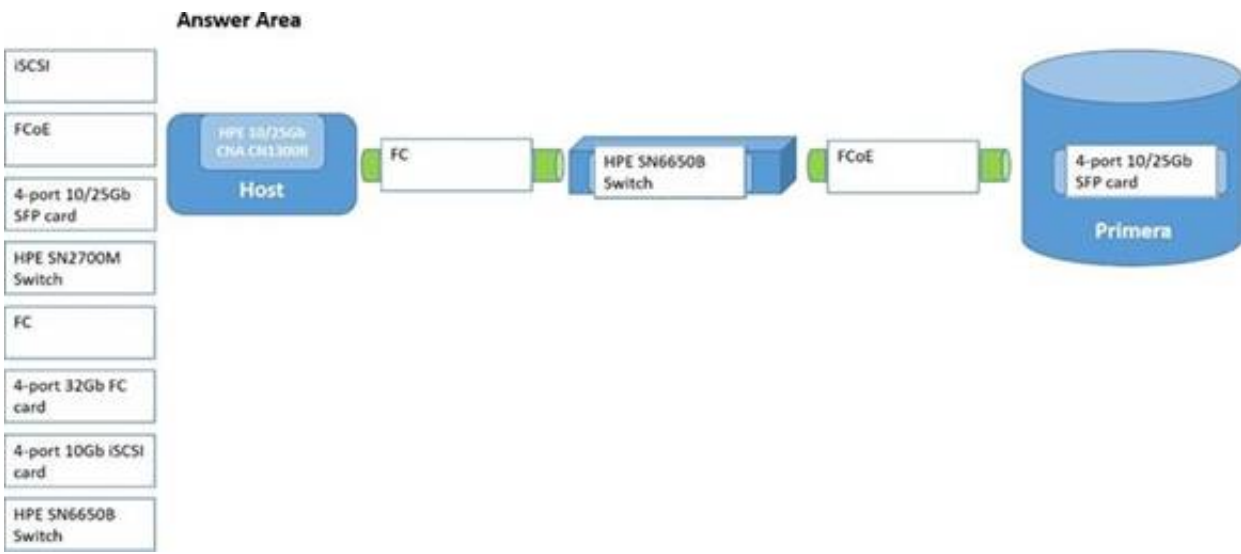
Drag the appropriate component to each box on the diagram to design a new storage network.



- A. Mastered
- B. Not Mastered

Answer: A

Explanation:



NEW QUESTION 3

- (Exam Topic 1)

Match each address with the associated address type.

Type	Address Format
FC	20:32:00:60:69:e2:19:82
IPv6	00:1B:44:11:3A:B7
iSCSI	iqn.2000-05.com.3pardata:20210002ac00851c:15.372.28.0
MAC	fe80::85b0:5df6:1dfb:6793

- A. Mastered
- B. Not Mastered

Answer: A

Explanation:

Graphical user interface, text, application Description automatically generated

NEW QUESTION 4

- (Exam Topic 1)

You have proposed a Primera array to a customer for new primary storage. The customer currently has an older 3PAR array that they will continue to use moving forward. The customer would like high availability configured.

Which RMC Peer Copy pre-requisites do you need to point out to the customer? (Choose two.)

- A. No license is required
- B. 2-port 10 Gb Ethernet Adapter (NIC) is required
- C. 4-port 1 Gb Ethernet Adapter (NIC) is required in each array
- D. RMC 6.2 is required
- E. Target drive type must match source drive type

Answer: CD

NEW QUESTION 5

- (Exam Topic 1)

Match the feature to the appropriate C-Series DCNM license type.

Answer Area

SAN Essentials Edition		Bundled at no charge with the C-series switches
Advanced Edition		Provides configuration, real-time monitoring, and troubleshooting capabilities
		Switch/server-based license
		Historical performance monitoring for network traffic hotspot analysis

- A. Mastered
- B. Not Mastered

Answer: A

Explanation:

Graphical user interface, application Description automatically generated

NEW QUESTION 6

- (Exam Topic 1)

You need to deploy a Recovery Manager Central appliance and integrate it with a customer's 3PAR system. Which information must be collected from the customer in order to proceed with the installer? (Choose two.)

- A. StoreOnce store name
- B. vCenter IP address or hostname
- C. HPE 3PAR used capacity
- D. IP address of the RMC
- E. NFS path

Answer: CD

NEW QUESTION 7

- (Exam Topic 1)

You need to create an N:M relationship between VMware hypervisors and virtual volumes with the least amount of administrative overhead.

Click the option where you can create a group of VMware hypervisors for volumes provisioning.



- A. Mastered
- B. Not Mastered

Answer: A

Explanation:

Graphical user interface, text Description automatically generated

NEW QUESTION 8

- (Exam Topic 1)

You are proposing a new Nimble solution to a customer that recently experienced data loss in their existing storage array.

Which features of the Nimble array should you emphasize to your customer to address their concerns? (Choose two.)

- A. quick RAID rebuild
- B. deduplication
- C. compression
- D. encryption
- E. triple party

Answer: BC

NEW QUESTION 9

- (Exam Topic 1)

A customer is implementing an SAP HANA environment and is looking for an alternative to an entirely in-memory database.

Which storage technology should you recommend?

- A. SAS SSD
- B. NVMe SSD
- C. NVMe SCM
- D. Intel Optane

Answer: D

NEW QUESTION 10

- (Exam Topic 1)

A small company has recently purchased an MSA and two B-series SN3000B switches. In an effort save money, they installed the solution themselves. They call you complaining they can now see the multiple volumes on the MSA after creating just a single volume. What should you advise them to do?

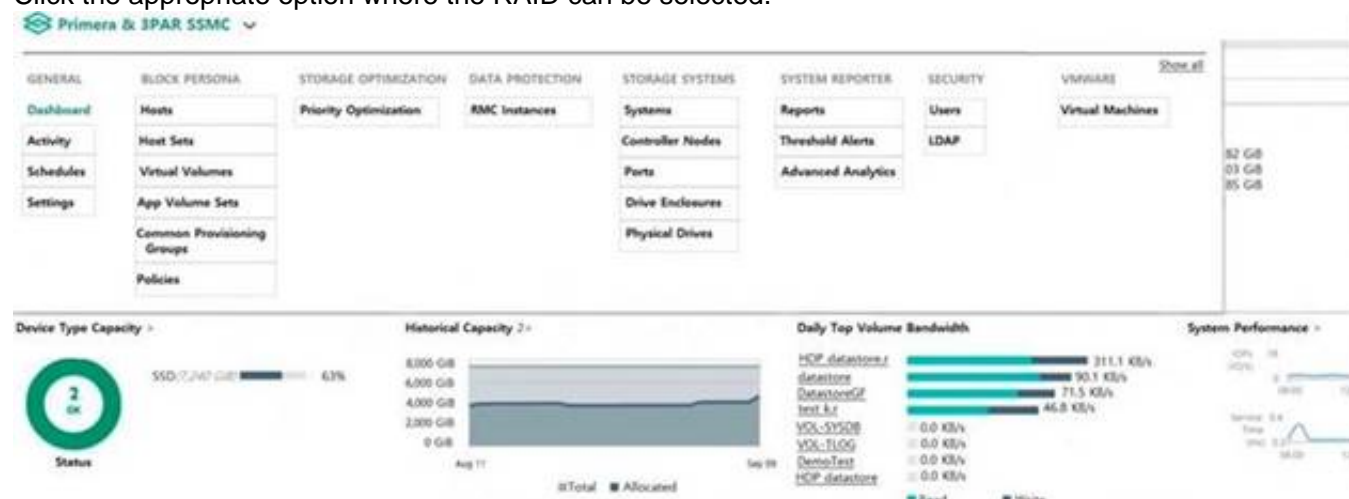
- A. Enable Smart SAN on the MSA 2052
- B. Set volume's tier affinity to Performance
- C. Enable zoning on the SN3000B switches
- D. Enable MPIO on their host

Answer: D

NEW QUESTION 10

- (Exam Topic 1)

You are configuring a new HPE 3PAR solution and need to create a new disk group with a defined RAID level. Click the appropriate option where the RAID can be selected.



- A. Mastered
- B. Not Mastered

Answer: A

Explanation:



NEW QUESTION 13

- (Exam Topic 1)

You are designing an HPE MSA iSCSI for a customer. Which components are typically part of the solution? (Choose two.)

- A. Drives
- B. SFPs
- C. Service Processor
- D. All-inclusive Multi-system software
- E. Switch zones

Answer: AB

NEW QUESTION 18

- (Exam Topic 1)

A customer uses Veeam to backup their entire datacenter. Which Veeam feature allows them to recover a single email from their Exchange server?

- A. Changed block tracking
- B. Explorer for Storage Snapshots
- C. Data Mover Service
- D. SureBackup

Answer: B

NEW QUESTION 19

- (Exam Topic 1)

You are designing a new enterprise array solution. The customer is interested in a caching tier that provides extremely low-latency and persistent storage at the same time. They also need to support more than 500GB.

Which technology should you recommend?

- A. DRAM
- B. SRAM
- C. NVMe SCM
- D. NAND SSD

Answer: D

NEW QUESTION 22

- (Exam Topic 1)

A customer is planning to replace their existing LTO-6 tape library with a new HPE StoreEver MSL2024 tape library. They want to reuse their existing LTO-6 tape cartridges for reads and writes.

What is the latest tape drive technology that will provide backward compatibility?

- A. LTO8
- B. LTO5
- C. LTO6
- D. LTO7

Answer: D

NEW QUESTION 24

- (Exam Topic 1)

You are designing a new HPE 3PAR StoreServ solution.

Which HPE tool allows editing the Customer Intent Document and adding specific instructions for packing?

- A. One Config Advanced
- B. SAF Collect
- C. NinjaSTARS
- D. Storage Sizing Tool

Answer: A

NEW QUESTION 28

- (Exam Topic 1)

A customer implemented the HPE StoreEver MSL6480 Tape Library.

Which HPE Software can the system administrator use to check the health of the library and monitor its utilization?

- A. OneView
- B. StoreServe TapeAssure Advanced
- C. StoreEver Data Verification
- D. InfoSight

Answer: B

NEW QUESTION 30

- (Exam Topic 1)

Which actions can be done within InfoSight Cross-Stack Analytics for VMware and Hyper-V? (Choose two.)

- A. View replication policies
- B. Find noisy neighbors
- C. Locate inactive VMs
- D. Modify administrative privileges
- E. Review backup schedules

Answer: BC

NEW QUESTION 34

- (Exam Topic 1)

What is the typical protocol used to access data from object storage?

- A. FC
- B. NVMe
- C. HTTP
- D. iSCSI

Answer: A

NEW QUESTION 37

- (Exam Topic 1)

A customer successfully implemented an HPE Primera solution.
Which tool can be used to verify performance counters, such as IOPS, match customer requirements?

- A. NinjaCrawler
- B. OneView
- C. Recovery Manager Central
- D. Primera on-node management GUI

Answer: D

NEW QUESTION 41

- (Exam Topic 1)
Which protocol can be used for accessing StoreOnce VTL target from Veeam?

- A. FC
- B. NFSv4
- C. iSCSI
- D. SMBv3

Answer: C

NEW QUESTION 45

- (Exam Topic 1)
A customer asks you for a recommendation on setting up their new StoreOnce appliance. They plan to use NetBackup and need the highest performance setup they can get. Their local hosts are connected via FC and the rest are connected via a WAN. Which backup target type should you recommend?

- A. VTL
- B. S3
- C. CIFS
- D. Catalyst

Answer: A

NEW QUESTION 47

- (Exam Topic 1)
Which tool is used to provide centralized management of 3PAR and Primera arrays?

- A. SMU
- B. Primera UI
- C. WebUI
- D. SSMC

Answer: D

NEW QUESTION 49

- (Exam Topic 1)
A customer is planning to upgrade their HF40 controllers to support additional I/O requirements. To which model can they upgrade to meet their new requirements?

- A. AF60
- B. AF40
- C. HF60
- D. HF40C

Answer: D

NEW QUESTION 52

- (Exam Topic 1)
Select the correct initiation option for each HPE Primera function.

Answer Area		
User Initiated		Stripe data across drives
Autonomic		Create Virtual Volumes
		Create Common Provisioning Groups
		Create RAID-6 Virtual Volumes
		Optional Performance Management
		Export LUNs

- A. Mastered
- B. Not Mastered

Answer: A

Explanation:

Graphical user interface, application Description automatically generated

NEW QUESTION 53

- (Exam Topic 1)

A customer is implementing a new high performance database environment.
What type of storage should you recommend?

- A. scale-out storage
- B. object store
- C. system-defined storage
- D. network-attached storage

Answer: A

NEW QUESTION 55

- (Exam Topic 1)

You are proposing a StoreOnce solution to a customer that has always used tape for a backup target. What should you suggest to ensure that the StoreOnce deduplication is correctly sized?

- A. StoreOnce timeless storage
- B. DDAnalyzer
- C. proof of concept with StoreOnce VSA
- D. OCA

Answer: B

NEW QUESTION 58

- (Exam Topic 2)

A customer is concerned about media and transmission errors caused by any component in the I/O stack from the server host bus adapter (HBA) into the HPE 3PAR StoreServ ports.
Which feature will address the customer's concern?

- A. Persistent Checksum
- B. Persistent Cache
- C. Peer Persistence
- D. Persistent Ports

Answer: A

NEW QUESTION 59

- (Exam Topic 2)

Which storage sizing tool, designed for HPE 3PAR StoreServ, can be used to determine whether customers qualify for the Get Thin Guarantee Program?

- A. NinjaProtected
- B. NinjaStars
- C. NinjaCrawler
- D. StoreVista

Answer: A

Explanation:

By performing a free NinjaProtected backup assessment, HPE and its partners can demonstrate how customers can reduce the amount of backup data they need to store by 95%—guaranteed (HPE StoreOnce Get Protected Guarantee Program)

NEW QUESTION 61

- (Exam Topic 2)

What advantage does the Unified API that is part of HPE's composable strategy provide?

- A. infrastructure lifecycle managed with standard programming code
- B. single portal for managing servers, networking, and storage
- C. write-back capability and instant cable warmth
- D. dedicated object storage platform

Answer: B

Explanation:

Unified API provides a single interface to discover, search, inventory, configure, provision, update, and diagnose the Composable Infrastructure. A single line of code enables full infrastructure programmability and can provision the infrastructure required for an application.

NEW QUESTION 64

- (Exam Topic 2)

Which value does an HPE Nimble solution provide in addition to other HPE storage solutions

- A. All inclusive software licensing over 5 years and additional capacity upgrades
- B. Upfront option for free controller upgrade after 3 years
- C. Flat support pricing for all hardware components
- D. Tier 1 and tier 2 phone support

Answer: D

NEW QUESTION 67

- (Exam Topic 2)

Match the HPE converged Strategy principle with its function

- A. Federated Storage:- Move data between storage systems in peer-to-peer relationship simply, dynamically and nondestructively
- B. Deduplication:-Reduce allocated capacity by eliminating data redundancy
- C. Thin provisioning:-Reduce TCO ,Opex and CPEX by using virtualization technology to make storage resources more efficient.
- D. Storage tiering:-Use combination of I/O accelerator to place data to meet price, performance, and latency requirements .
- E. Storage virtualization:- Deliver simplified management ,higher utilization ,efficient, and agility by separating the logical and physical resource.

Answer: E

NEW QUESTION 72

- (Exam Topic 2)

Which management interface uses four basic commands (Create ,read, update ad delete)to enable administrators to define ad radically simply management processes?

- A. Rest API
- B. WMI
- C. SMI-S
- D. WEBEM

Answer: A

NEW QUESTION 76

- (Exam Topic 2)

How does the HPE StoreVirtual VSA storage platform scale performance and capacity?

- A. eliminates the need for storage controllers
- B. enables access through multiple protocols
- C. aggregates all resources into a single storage pool
- D. recreates storage pools on multiple devices

Answer: D

NEW QUESTION 80

- (Exam Topic 2)

A customer is a cloud service provider with infrastructure powered by HPE 3PAR Storeserv 9000.The customer is concern about their ability to ensure the quality of service and protect their tenants from unpredictable bursts of I/O from other tenants. What should you recommended to your customer ?

- A. Use priority optimization to enable service level for workloads
- B. Use virtual domain to automatically set multi-tenant policies
- C. Use dynamic optimization to automatically manage quality of service
- D. Use adaptive optimization to optimize service level automatically

Answer: A

NEW QUESTION 83

- (Exam Topic 2)

Which type of networking switch handles both Ethernet and fibre channel traffic?

- A. Director
- B. Virtual
- C. Edge
- D. Converged

Answer: D

NEW QUESTION 84

- (Exam Topic 2)

Which storage protocol is supported by virtual connect Flex-10?

- A. FCoE
- B. FC
- C. iSCSI
- D. FCIP

Answer: C

NEW QUESTION 89

- (Exam Topic 2)

During Technology workshop ,the customer asks about different between converged and fibre channel switches. What would be a benefits of using flex fabric switches in a fibre channel storage environment?

- A. Support for combining multiple physical switches in to one virtual switch with a single IP address
- B. Support for six Ethernet and two fibre channel ,or six Ethernet and two iSCSI or eight Ethernet adapters per server.
- C. Zones can be configured for QoS with high ,medium, and low priorities within a fabric on a zone by zone basic
- D. In-flight compression and encryption provides efficient link utilization and security

Answer: A

NEW QUESTION 92

- (Exam Topic 2)

A customer uses Recovery manager central for Vmware (RMC-V).They need to ability to perform granular recovery of application item directly from backups...Which solution integrates with RMC-V to provide the desired requirements?

- A. Veeam Backup & Replication
- B. Netbackup
- C. StoreOnce cloudbank
- D. CommVault

Answer: A

NEW QUESTION 95

- (Exam Topic 2)

Which software feature should an HPE 3PAR Storeserv 8000 customer use to optimize data protection and recovery, Including rapid online recovery for his VMware environment?(select two)

- A. HPE 3PAR Virtual Copy software
- B. HPE 3PAR Remote copy software
- C. HPE 3PAR Security software suite
- D. HPE 3PAR File persona Software suite
- E. HPE StoreOnce recovery manager central for VMware

Answer: AE

NEW QUESTION 97

- (Exam Topic 2)

Match the data access type in a SAN fabric to the correct description.

Data Access Type	Description
Centralized	<input type="text"/> Data access between a local server and a storage system connected to the same switch
Distributed	<input type="text"/> Data access between multiple, dispersed servers and one storage system
Local	<input type="text"/> Data access between multiple, dispersed servers and multiple storage systems

- A. Mastered
- B. Not Mastered

Answer: A

Explanation:

	Description
<input type="text"/> Local	Data access between a local server and a storage system connected to the same switch
<input type="text"/> Centralized	Data access between multiple, dispersed servers and one storage system
<input type="text"/> Distributed	Data access between multiple, dispersed servers and multiple storage systems

NEW QUESTION 100

- (Exam Topic 2)

After a performance analysis, a customer plan to reorganize his adaptive Flash cache (AFC) configuration and want to raise it from 256 to 768GB. Which action is needed to take advantage of the new AFC configuration?

- A. Remove flash cache for all VVS then run create Flash cache
- B. Increase current AFC configuration to reflect the additional space
- C. Remove the old AO configuration and recreate a new one
- D. Run tunesys after raising the AFC to take advantage of the additional space

Answer: A

NEW QUESTION 105

- (Exam Topic 2)

A customer has a large deployment of HPE Synergy compute modules, HPE 3PAR StoreServ storage, and HPE StoreOnce systems in a single data center. They are concerned about the risk of data loss due to site disaster.

What is the reason to propose HPE CloudBank?

- A. To easily move workloads to AWS or Azure in the event of site disaster.
- B. To improve RPO/RTO objectives by automating snapshot-based integrating between 3PAR and StoreOnce.
- C. To regularly send backups to the cloud for the purposes of DR protection.
- D. To leverage 3PAR snapshots and utilize StoreOnce recovery capabilities to minimize data loss and downtime.

Answer: C

NEW QUESTION 110

- (Exam Topic 2)

While demonstrating an HPE 3PAR StoreServ 9450 array, the customer asks you to demonstrate the File Persona features.

Which objects do you need to create to demonstrate these features? (Choose two.)

- A. File share
- B. Storage container
- C. Host
- D. Remote copy group
- E. Virtual file server

Answer: AE

NEW QUESTION 113

- (Exam Topic 2)

You are designing a new HPE 3PAR StoreServ all-flash array for the customer.. Which ratio should you expect to have the highest efficiency?

- A. Read/write ratio
- B. Reclamation ratio
- C. Compaction Ratio
- D. Thin provisioning ratio

Answer: C

NEW QUESTION 117

- (Exam Topic 2)

During which event will HPE 3par Storeserv persistent port feature provide transparent and uninterrupted failover (Select two)

- A. Loss of persistent cache
- B. B-series SAN switch upgrades
- C. Firmware upgrade
- D. Node maintenance or failure
- E. Loss of full-mesh cluster interconnect

Answer: CD

NEW QUESTION 119

- (Exam Topic 2)

A customer has an existing configuration consisting of first class and nearline SAS drive in an 8000 SFF enclosure. They add two SFF 8000enclosure that are fully populated with nearline drives to an existing HPE 3Par storeserv 8400 array. What should the customer do to optimize their storage configuration?

- A. Defrag the CPG and run align drive on their system
- B. Run tunesys and on the array (275)
- C. Enable space reclamation
- D. Create new CPG for the newly installed drivers

Answer: B

NEW QUESTION 123

- (Exam Topic 2)

What performance benefit is provided by using the HPE StoreVirtual DSM for Microsoft MPIO instead of the standard MPIO?

- A. The HPE DSM increases availability and reduces latency and throughput.
- B. The storage system, which holds a copy of the requested data, services the read I/Os.
- C. The iSCSI connections are blocked to non-critical nodes in the cluster by default.
- D. The storage system, which receives a copy of the data, does not service the write I/O.

Answer: B

NEW QUESTION 126

- (Exam Topic 2)

Users are complaining about poor performance with their Data Warehouse application. What is an effective solution to increase their performance at minimal cost?

- A. HPE 3PAR Adaptive Flash Cache
- B. HPE 3PAR Priority Optimization
- C. HPE 3PAR Dynamic Optimization
- D. HPE 3PAR Adaptive Optimization

Answer: B

NEW QUESTION 127

- (Exam Topic 2)

Which storage tool in the storage assessment foundry provide data protection analysis?

- A. Ninja protected+ (318)
- B. NinjaCrawler
- C. Ninja Thin
- D. Ninja Stars

Answer: A

NEW QUESTION 131

- (Exam Topic 2)

A customer wants to expand his cascaded B-series based SAN but is concerned about latencies within the SAN backend. You recommend changing the topology to a full mesh.

Which switch feature will ensure that the latencies in the backend are at the lowest possible level?

- A. LACP
- B. NPIV
- C. FSPF
- D. VSF

Answer: C

NEW QUESTION 136

- (Exam Topic 2)

Which file protocols are commonly used in HPE StoreOnce environments? (Choose two.)

- A. CIFS
- B. NTFS
- C. VFS
- D. ZFS
- E. NFS

Answer: AE

NEW QUESTION 141

- (Exam Topic 2)

A customer has a SAN infrastructure with an HPE C-Class blade enclosure, and a mix of ProLiant G7, Gen8 and Gen9 servers. They require a new storage platform.

How can you confirm the new storage array will be supported in the existing environment?

- A. Design an array with an older version of the firmware to ensure compatibility.
- B. Document existing server and SAN information, and consult SPOCK to ensure firmware compatibility.
- C. Design an array with the latest firmware, and recommend that the customer engage HPE PointNext to upgrade the existing hardware.
- D. Check recommended firmware levels in the HP SAN Design Reference Guide to ensure firmware compatibility.

Answer: B

NEW QUESTION 146

- (Exam Topic 2)

What is the benefit of HPE Synergy? (Choose two.)

- A. It supports up to three HPE StoreVirtual VSA nodes for storage RAID.
- B. It can compose and reclaim DAS storage.
- C. It supports HPE BladeSystem c-class FlexFabric interconnect modules.
- D. It can use HPE 3PAR File Persona for object storage.
- E. It can prevent block storage services from HPE 3PAR as part of the resource pool.

Answer: BE

NEW QUESTION 150

- (Exam Topic 2)

Which value does a Nimble solution provide in addition to other HPE storage solutions?

- A. Flat support pricing for all hardware components
- B. Future-proofed for newer technologies
- C. All-inclusive software licensing over 5 years and additional capacity upgrades
- D. Upfront option for free controller upgrade after 3 years

Answer: B

NEW QUESTION 153

- (Exam Topic 2)

A large enterprise is experiencing exponential data growth of their existing Oracle databases. They are concerned about their increasing backup windows and the risk of non-compliance with recovery time objectives increase of data corruption in primary storage. Their primary storage is an 3PAR Storeserv 8400, and their backup target is an HPE StoreOnce System. Which HPE storage solution allow the customer to migrate this risk?

- A. RMC Express protect
- B. Catalyst in-Flight compression
- C. 3 PAR remote copy
- D. StoreOnce unified deduplication

Answer: A

NEW QUESTION 156

- (Exam Topic 2)

What is the benefits of HPE synergy(Select 2)

- A. It can present block storage services from HPE 3par as part of the resource pool
- B. It support up to 3 HPE store Virtual VSA nodes for storage RAID
- C. It can use HPE 3PAR file persona for objet storage
- D. It can compose and reclaim DAS storage
- E. It support HPE blade system C-Class Flex Fabrics Interconnect module (need to check)

Answer: AD

NEW QUESTION 159

- (Exam Topic 2)

A customer has mission-critical applications that intermittently experience heavy disk I/O. The storage speed has the most impact on the application's performance. The customer does not want to dedicate SSD disks to these applications because additional performance is only needed periodically, and moving the volumes between tiers takes too long.

Which HPE StoreVirtual VSA feature can address this customer's challenge?

- A. Storage virtualization
- B. Space Reclamation
- C. Thin Provisioning
- D. Adaptive Optimization

Answer: D

NEW QUESTION 161

- (Exam Topic 2)

Which statement is correct when comparing functionalities of the AF,CF, and SF series in the nimble storage portfolio?

- A. Zero copy clone are unique feature of all flash array within the nimble portfolio
- B. SF series supports storage snapshots and replication using veeeam backup & replication CS and AF series support storage snapshot only.
- C. Inline deduplication for complete array capacity in combination with compression is offered by the AF and SF series only (67) need to check
- D. 99.9999% availability measured and guaranteed for AF and CF series arrays, SF series array offer 99.999% availability.

Answer: C

NEW QUESTION 163

- (Exam Topic 2)

Refer to the exhibit:

Port ID	Label	System	Port Type	Port State	
0:1:1	-	3PAR	Host	Ready	
0:1:2	-	3PAR	Free	Loss Sync	
0:2:1	-	3PAR	Host	Ready	
0:2:2	-	3PAR	Host	Offline	
0:0:1	DP-1	3PAR	Disk	Ready	
0:0:2	DP-2	3PAR	Disk	Ready	
0:3:1	RCIP0	3PAR	RC	Offline	

0:1:1 | Overview

General

Port ID

0:1:1

System

3PAR

Label

-

Protocol

FC

Rate

8 Gbps

Adapter type

EMULEX LPe12002

CNA port

No

WWN

Port type

Host

Mode

Target

Mode change

Allowed

Connected devices

3 hosts

Which type of data format do you expect in the red rectangle?

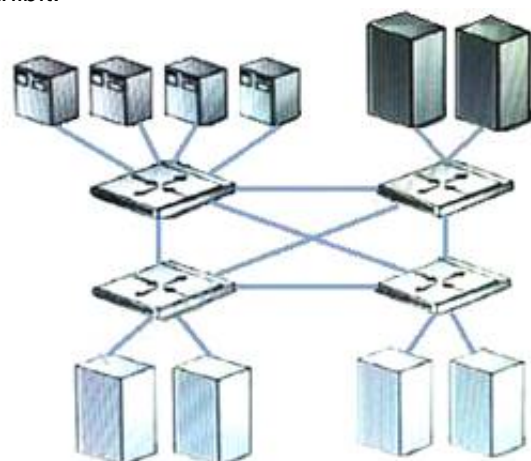
- A. 172.16.31.11/24
- B. 94:b4:0f:cd:34:8a
- C. iqn.2015-02.com.hpe:oneview-vcgeDav000
- D. 20110002AC00736E235.524

Answer: D

NEW QUESTION 167

- (Exam Topic 2)

Exhibit:



Which fabric design is shown?

- A. meshed
- B. single fabric
- C. cascaded
- D. core-edge

Answer: A

NEW QUESTION 168

- (Exam Topic 2)

A customer recently acquired another company and found that the existing infrastructure was outdated and costly to maintain. They need to put a complete infrastructure solution in place that minimizes the footprint in the data center as quickly and possible. Which solution you recommend?

- A. Simplicity 380
- B. Bladesystem 7000
- C. Converged systems
- D. Synergy 12000

Answer: A

NEW QUESTION 169

- (Exam Topic 2)

You are adding a new host for an HPE 3PAR StoreServ proof-of-concept .In addition to the host name ,What is the minimum information that is required to create a host profile?

- A. Host Persona
- B. Host MAC
- C. Host set
- D. Host WWN

Answer: D

NEW QUESTION 170

- (Exam Topic 2)

A customer is looking for a centralized file-sharing solution that can provide print services in addition to 15TB of storage. Which solution component should you recommend?

- A. FC switch
- B. NAS
- C. FC-based array
- D. Disk enclosure with integrated SAS switch

Answer: B

NEW QUESTION 175

- (Exam Topic 2)

A customer needs to store a large amount of unstructured data that must be queried quickly. Which type of storage meets the customer's needs?

- A. object
- B. hash
- C. file
- D. flash

Answer: A

NEW QUESTION 179

- (Exam Topic 2)

When using a HPE 3 PAR Storeserv array to enable a user to apply array-based data services to specific application and VM's. What is the benefit of implementing VM-level gradually of Volts?

- A. Data sprawls eliminated by performing the migration functions at the array level using 3PAR HPE Dynamic Optimization
- B. Efficiency is maintained by reclaiming space from deleted or migrated VMs using capabilities built into the storage ASIC
- C. Performing is accelerated by detecting and moving the most frequently –accessed VMs into the fast class tier
- D. Performance is accelerated by leveraging the deduplication capabilities built into the storage ASIC

Answer: B

NEW QUESTION 183

- (Exam Topic 2)

What allows volume level data to be copied between an HPE 3PAR and an HPE store Virtual VSA?

- A. Store virtual Peer motion
- B. HPE 3PAR Remote Copy
- C. Recovery Manager central
- D. StoreServ Peer Motion

Answer: C

NEW QUESTION 187

- (Exam Topic 2)

A customer has a large amount of the data on their Primera that is mission critical. The business needs RPO to be under 5 minutes. Which protection technology should you recommend?

- A. synchronous replication
- B. asynchronous replication
- C. archiving
- D. backup to tape

Answer: A

NEW QUESTION 189

- (Exam Topic 2)

You are planning a single-site Nimble solution with iSCSI connectivity. Two 10GbE SFP+ dual port NICS are included in the configuration. You designed an intelligent Resilient Framework (IRF) stack with HPE FlexFabric 5900CP switches. Which statements is correct when discussing the IRF limits for this configuration?

- A. When connecting an iSCSI storage to an IRF stack, a minimum of four 10GbE ports must be used per switch.
- B. A maximum of two switches can be used in an IRF stack when connecting storage.
- C. In an IRF stack with storage connectivity, the 40GbE ports cannot be used.
- D. The used IRF ports for iSCSI traffic have to be configured as 10GbE converged ports.

Answer: B

NEW QUESTION 191

- (Exam Topic 2)

You are planning an upgrade to a customer's existing HPE 3PAR StoreServ 8200 to include 4-port 16Gb FC adapters. The servers are zoned to see the storage via four paths. The customer is concerned about storage availability during the upgrade. Which statement is correct about performing this upgrade?

- A. When NPIV is enabled, the HPE 3PAR Port persistence will show all four paths to the servers.
- B. The MPIO service will do a failover, and the servers will continue to have access via two paths.
- C. Windows servers require host explorer is installed to ensure MPIO is unaffected.
- D. As long as MEM driver is installed on VMware vSphere, no path failures are seen.

Answer: A

NEW QUESTION 194

- (Exam Topic 2)

A customer is interested in integrating their HPE 3PAR StoreServ arrays into their OneView environment to support automated volume provisioning. What must you install to enable the integration?

- A. HPE SAN Network Advisor Enterprise
- B. HPE SAN Network Advisor Professional
- C. 3PAR Host Explorer
- D. OneView Global Dashboard

Answer: A

NEW QUESTION 197

- (Exam Topic 2)

A customer run several HPE 3PAR storeserv system in their environment using data rest encryption .The customer needs to add an HPE 3PAR Storeserv 8000system to the storage pool and an external key manager for all systems.. What is the requirement for this solution?

- A. Boot server for the existing 3PAR storeserv array must be replaced with self-encrypting drive
- B. All drives of the new HPE 3PAR storeserv array must be self-encrypting
- C. HPE ESKM FIPS mode must be disabled by the administrator
- D. Data on the existing HPE 3PAR storeserv array must be decrypted and re-encrypted with new keys

Answer: B

NEW QUESTION 200

- (Exam Topic 2)

A customer need a new storage system for visual desktop infrastructure environment to reduce the time required to provision new desktop. Which HPE solution should you recommended to fulfill this customers requirements?

- A. Snapclones on HPE MSA 2040
- B. SmartClone on HPE store virtual VSA(54)
- C. Storage pool on HPE store Easy
- D. Virtual Copy on HPE 3Par storeServ

Answer: B

NEW QUESTION 202

- (Exam Topic 2)

Which protocols are currently used in the front end by HPE 3PAR StoreServ systems? (Choose two.)

- A. iSCSI
- B. Infiniband
- C. SAS
- D. NVMe
- E. FC

Answer: AE

NEW QUESTION 207

- (Exam Topic 2)

A customer need to update the local sever at each of their branches keep up with the increasing demand for High-performance storage. The customer cannot afford to move to SAN at each state. Which HPE storage technology can increase performance for this customer?

- A. Smart Path
- B. SmartCache
- C. Adaptive Flash Cache
- D. Persistent Cache

Answer: B

NEW QUESTION 212

- (Exam Topic 2)

Match the type of storage found in today's market to the HPE storage solution optimized for that capacity?

- A. HPE 3PAR StoreServ - Block
- B. MSA - Block
- C. Nimble - Block
- D. Scalability - Object
- E. StoreEasy - File
- F. StoreVirtual - Block

Answer: A

NEW QUESTION 215

- (Exam Topic 2)

Which resource provides configurations for HPE tested and referenced configurations in a software-defined storage environment?

- A. HPE Storage Sizer
- B. One Config Advanced
- C. NinjaStars
- D. StoreVirtual VSA Ready Nodes

Answer: D

Explanation:

HPE StoreVirtual VSA Ready Nodes—HPE tested reference configurations on HPE ProLiant servers that address typical virtualization and remote office use cases, and deployment of converged solutions.

NEW QUESTION 218

- (Exam Topic 2)

You are presenting the HPE StoreEver portfolio to a media agency. What advantage is offered when using LTFS?

- A. file management capabilities will be provided with tape cartridges
- B. WORM functionality for file, block and object storage access on tape
- C. file encryption with public and private key management
- D. file and block data management within an HPE HSM solution

Answer: A

NEW QUESTION 223

- (Exam Topic 2)

An HPE 3PAR StoreServ 9000 All-Flash Array customer plans to deploy a secondary array 20 km away from their primary array to enable storage replication over a dark fibre. Their existing environment consists of one HPE Synergy Frame 12000, HPE SN6000B Fibre Channel Switches, HPE FlexFabric 5700 Switch Series, and HPE StoreOnce Systems.

Which HPE license is required to meet the customer's technical requirements?

- A. Intelligent Resilient Framework licenses
- B. HPE StoreOnce Replication
- C. Extended Fabric
- D. HPE 3PAR Remote Copy

Answer: D

NEW QUESTION 226

- (Exam Topic 2)

A customer need a backup solution to their virtualized environment .The backup solution must be agentless ,hypervise independent and integrated with HPE storage solutions. The solution must support Nimble snapshot and replication management. What products meets the customer requirement?

- A. HPE storeOnce Recovery manager central
- B. Commvault Simpana Intellisnap
- C. Micro Focus Data Protector
- D. Veem Backup and Replication

Answer: D

NEW QUESTION 228

- (Exam Topic 2)

Which statement is true when defining object storage ?

- A. It is most suited for sharing files and characterized by volumes
- B. It is most suited for unstructured data and characterized by file share protocols like NFS
- C. It is most suited for unstructured data and characterized by containers or buckets
- D. suited for database It is most and characterized by containers or buckets

Answer: C

NEW QUESTION 231

- (Exam Topic 2)

In an iSCSI based storage system Proof-Of-Concept project ,the customer is not satisfied with the performance of their video streaming application .What would you recommended to the customer to optimize the excisting environment?

- A. Enable hardware iSCSI initiator
- B. Increase the switch buffer to buffer credits
- C. Enable jumbo frames on required components
- D. Consolidate the heterogeneous switches in the network

Answer: C

NEW QUESTION 234

- (Exam Topic 2)

What is used to migrate data between nodes in an HPE StoreVirtual VSA environment?

- A. Network RAID
- B. Peer Motion
- C. SmartClone
- D. Remote Copy

Answer: B

Explanation:

Integrated with HPE Recovery Manager Central for seamless data movement to StoreOnce Backup appliances and StoreOnce VSA, and bidirectional replication with 3PAR StoreServ arrays (Peer Copy).

NEW QUESTION 238

- (Exam Topic 2)

A customer has an existing environment with 3PAR, Nimble and MSA. They are providing file servicing from all arrays with multiple virtual machine but preference is not adequate.

What should you add to the environment to increase performance, increase availability, and reduce management overhead?

- A. StoreEasy 3850 Gateway
- B. StoreEasy 5000
- C. 3PAR File Persona
- D. Simplvity 380

Answer: A

NEW QUESTION 239

- (Exam Topic 2)

You have just completed a performance analysis of an HPE 3PAR StoreServ 8400 disk array with different tiers at a customer's site. After reviewing the performance metrics, you determine that they should install a new tier of SSD drives.

Which actions should you recommend they take to fully optimize the array? (Choose two.)

- A. Configure Adaptive Flash Cache.
- B. Configure scheduled tunesys tasks.
- C. Rebalance all flash drives between nodes 0 and 2.
- D. Configure Adaptive Optimization.
- E. Configure dedicated drives to enable Adaptive Flash Cache.

Answer: BD

NEW QUESTION 242

- (Exam Topic 2)

A customer currently has a CS1000H and wants to upgrade to a CS3000. What must be considered before upgrading?

- A. This upgrade is disruptive and needs planned downtime.
- B. A capacity upgrade to a fully populated array has to be performed first.
- C. Timeless storage support is not offered for CS1000H entry-level systems.
- D. A controller upgrade to a CS1000F has to be performed first.

Answer: B

NEW QUESTION 245

- (Exam Topic 2)

A customer migrate their infrastructure from a 3rd party storage to a Nimble environment. During an architecture workshop, you discuss VMvision with the customer and the system engineer. Which statement is correct when implementing performance monitoring using VMVision?

- A. Nimble service processor collects relevant per VM performance data and send them using SSL port 443 to VMvision
- B. VMvision is an agentless integration into infosight and needs only the Vcenter server appliance credentials to connect
- C. (page 112)
- D. VMware vSphere storage API's array integration (VAAI) has to be configured to combine storage and VM performance metrics
- E. SNMP trap service has to be configured to send traps to infosight and integrate performance data using VMvision.

Answer: C

NEW QUESTION 248

- (Exam Topic 2)

Which statement is correct when comparing functionalities of the AF and HF series in the Nimble storage portfolio? (Choose Two)

- A. Zero Copy Clones are a unique feature of All-Flash arrays within the Nimble Portfolio.
- B. >99.9999% availability is measured and guaranteed for AF and HF series arrays.
- C. HF series has a dedicated read cache and AF series does not have a dedicated read cache.
- D. HF series supports storage snapshots and replication using Veeam Backup & Replication, HF and AF series support storage snapshots only

Answer: BC

NEW QUESTION 250

- (Exam Topic 2)

A customer with restricted budget has an existing HPE 3PAR storeserver 8200 using 10kfast class and near line drives because of the implementation of new

application .the workload has shifted to be read intensive therefore ,they want to increase the read I/O performance What should they add to their environment ?

- A. A tier with 15k fast class 600 GB drive for new CPG, configure AO policy to advantage of new resources
- B. Two 400 GB SSD drives and enable adaptive flash cache (page 173) eed to check
- C. A tier with 15k fast class drive and implement thin provisioned deduplicated virtual volumes
- D. A tier of SSD and implement thin provisioned virtual volume

Answer: B

NEW QUESTION 251

.....

THANKS FOR TRYING THE DEMO OF OUR PRODUCT

Visit Our Site to Purchase the Full Set of Actual HPE0-J68 Exam Questions With Answers.

We Also Provide Practice Exam Software That Simulates Real Exam Environment And Has Many Self-Assessment Features. Order the HPE0-J68 Product From:

<https://www.2passeasy.com/dumps/HPE0-J68/>

Money Back Guarantee

HPE0-J68 Practice Exam Features:

- * HPE0-J68 Questions and Answers Updated Frequently
- * HPE0-J68 Practice Questions Verified by Expert Senior Certified Staff
- * HPE0-J68 Most Realistic Questions that Guarantee you a Pass on Your FirstTry
- * HPE0-J68 Practice Test Questions in Multiple Choice Formats and Updatesfor 1 Year