

Microsoft

Exam Questions MS-100

Microsoft 365 Identity and Services



NEW QUESTION 1

- (Exam Topic 5)

Please wait while the virtual machine loads. Once loaded, you may proceed to the lab section. This may take a few minutes, and the wait time will not be deducted from your overall test time.

When the Next button is available, click it to access the lab section. In this section, you will perform a set of tasks in a live environment. While most functionality will be available to you as it would be in a live environment, some functionality (e.g., copy and paste, ability to navigate to external websites) will not be possible by design.

Scoring is based on the outcome of performing the tasks stated in the lab. In other words, it doesn't matter how you accomplish the task, if you successfully perform it, you will earn credit for that task.

Labs are not timed separately, and this exam may have more than one lab that you must complete. You can use as much time as you would like to complete each lab. But, you should manage your time appropriately to ensure that you are able to complete the lab(s) and all other sections of the exam in the time provided.

Please note that once you submit your work by clicking the Next button within a lab, you will NOT be able to return to the lab.

You may now click next to proceed to the lab. Lab information

Use the following login credentials as needed:

To enter your username, place your cursor in the Sign in box and click on the username below.

To enter your password, place your cursor in the Enter password box and click on the password below.

Microsoft 365 Username: admin@LODSe426243.onmicrosoft.com Microsoft 365 Password: 3&YWyjse-6-d

If the Microsoft 365 portal does not load successfully in the browser, press CTRL-K to reload the portal in a new browser tab.

The following information is for technical support purposes only:

Lab Instance: 10887751

You hire a new Microsoft 365 administrator named Nestor Wilke. Nestor Wilke will begin working for your organization in several days.

You need to ensure that Nestor Wilke is prevented from using his account until he begins working.

A. Mastered

B. Not Mastered

Answer: A

Explanation:

You need to sign-in status for the account to 'Blocked'. Blocking doesn't stop the account from receiving email and it doesn't delete any data.

* 1. On the home page of the Microsoft 365 admin center, type the user's name into the Search box.

* 2. Select the Nestor Wilke account in the search results.

* 3. In the 'Sign-in status' section of the account properties, click the Edit link.

* 4. Select 'Block the user from signing in' and click the Save button.

NEW QUESTION 2

- (Exam Topic 5)

You have the Microsoft Azure Active Directory (Azure AD) users shown in the following table.

Name	Member of
User1	Group1
User2	Group2

Your company uses Microsoft Intune.

Several devices are enrolled in Intune as shown in the following table.

Name	Platform	BitLocker Drive Encryption	Member of
Device1	Windows 10	Disabled	Group3
Device2	Windows 10	Disabled	Group4

The device compliance policies in Intune are configured as shown in the following table.

Name	Require BitLocker	Assigned to
Policy1	Not configured	Group3
Policy2	Require	Group4

You create a conditional access policy that has the following settings:

➤ The Assignments settings are configured as follows:

- Users and groups: Group1

- Cloud apps: Exchange Online

- Conditions: Include All device state, exclude Device marked as compliant

➤ Access controls is set to Block access.

For each of the following statements, select yes if the statement is true. Otherwise, select No.

NOTE: Each correct selection is worth one point.

Statements	Yes	No
User1 can access Microsoft Exchange Online from Device1.	<input type="radio"/>	<input type="radio"/>
User1 can access Microsoft Exchange Online from Device2.	<input type="radio"/>	<input type="radio"/>
User2 can access Microsoft Exchange Online from Device2.	<input type="radio"/>	<input type="radio"/>

- A. Mastered
- B. Not Mastered

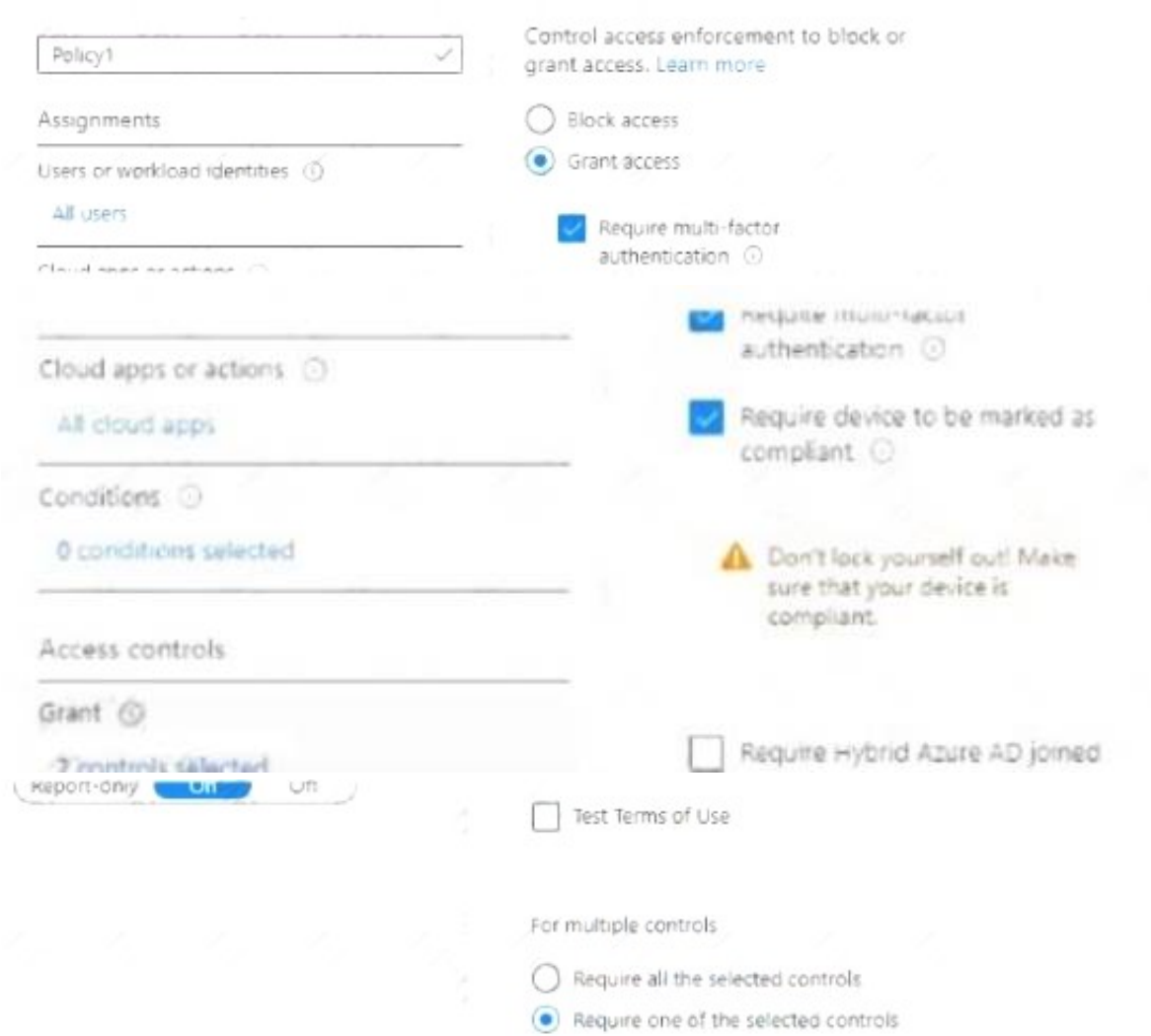
Answer: A

Explanation:

Box 1:
Yes. User1 is in Group1. The Conditional Access Policy applies to Group1. The Conditional Access Policy blocks access unless the device is marked as compliant.
BitLocker is disabled for Device1. Device1 is in Group3 which is assigned device Policy1. The BitLocker policy in Policy1 is 'not configured' so BitLocker is not required.
Therefore, Device1 is compliant so User1 can access Exchange online from Device1. Box 2:
No. User1 is in Group1. The Conditional Access Policy applies to Group1. The Conditional Access Policy blocks access unless the device is marked as compliant. BitLocker is disabled for Device2. Device2 is in Group4 which is assigned device Policy2. The BitLocker policy in Policy2 is 'Required so BitLocker is required. Therefore, Device2 is not compliant so User1 cannot access Exchange online from Device2. Box3:
Yes. User2 is in Group2. The Conditional Access Policy applies to Group1. The Conditional Access Policy does not apply to Group2. So even though Device2 is non-compliant, User2 can access Exchange Online using Device2 because there is no Conditional Access Policy preventing him/her from doing so.
Reference:
<https://docs.microsoft.com/en-us/azure/active-directory/conditional-access/conditions>

NEW QUESTION 3

- (Exam Topic 5)
You have a Microsoft 365 subscription that has Conditional Access policy named Policy1. Policy1 is configured as shown in the following exhibit.



Use the drop-down menus to select the answer choice that completes each statement based on the information presented in the graphic.

If a user signs in from a compliant device, the sign in will [answer choice].

be allowed
be blocked
prompt for multi-factor authentication (MFA)

If a user signs in from an unmanaged device, the sign in will [answer choice].

be allowed
be blocked
prompt for multi-factor authentication (MFA)

- A. Mastered
- B. Not Mastered

Answer: A

Explanation:

Graphical user interface, text, application Description automatically generated

NEW QUESTION 4

- (Exam Topic 5)
Your company has a Microsoft 365 subscription.
You need to identify all the users in the subscription who are licensed for Microsoft Office 365 through a group membership. The solution must include the name of the group used to assign the license.
What should you use?

- A. the Licenses blade in the Azure portal
- B. Reports in the Microsoft 365 admin center
- C. Active users in the Microsoft 365 admin center
- D. Report in Security & Compliance

Answer: A

Explanation:
In the Azure AD Admin Center, select Azure Active Directory then select Licenses to open the Licenses blade. From there you need to click on the 'Managed your purchased licenses link'. Select a license you want to view, for example Office 365 E3. This will then display a list of all users with that license. In the 'Assignment Paths' column, it will say 'Direct' for a license that has been assigned directly to a user or 'Inherited (Group Name)' for a license that has been assigned through a group.
Reference:
<https://docs.microsoft.com/en-us/azure/active-directory/users-groups-roles/licensing-groups-assign>

NEW QUESTION 5

- (Exam Topic 5)
You are developing an interactive invoicing application mat will be used by end users. The application will have the following features:
• Save invoices generated by a user to the user s OneDrive for Business.
• Email daily automated reminders.
You need to identify which permissions to grant for the application features. The solution must use the principle of least privilege. Which permission type should you grant for each feature? To answer, select the appropriate options in the answer area.
NOTE: Each correct selection is worth one point.

Answer Area

Save invoices:

Administrator

Application

Delegated

Super User

Send automated reminders:

Administrator

Application

Delegated

Super User

- A. Mastered
- B. Not Mastered

Answer: A

Explanation:
Answer Area

Save invoices:

Administrator

Application

Delegated

Super User

Send automated reminders:

Administrator

Application

Delegated

Super User

NEW QUESTION 6

- (Exam Topic 5)
You have a Microsoft 365 subscription.
You suspect that several Microsoft Office 365 applications or services were recently updated. You need to identify which applications or services were recently updated.
What are two possible ways to achieve the goal? Each correct answer presents a complete solution.
NOTE: Each correct selection is worth one point.

- A. From the Microsoft 365 admin center, review the Message center blade.
- B. From the Office 365 Admin mobile app, review the messages.
- C. From the Microsoft 365 admin center, review the Products blade.
- D. From the Microsoft 365 admin center, review the Service health blade.

Answer: AB

Explanation:

The Message center in the Microsoft 365 admin center is where you would go to view a list of the features that were recently updated in the tenant. This is where Microsoft posts official messages with information including new and changed features, planned maintenance, or other important announcements. The messages displayed in the Message center can also be viewed by using the Office 365 Admin mobile app. Reference:
<https://docs.microsoft.com/en-us/office365/admin/manage/message-center?view=o365-worldwide>
<https://docs.microsoft.com/en-us/office365/admin/admin-overview/admin-mobile-app?view=o365-worldwide>

NEW QUESTION 7

- (Exam Topic 5)

Your company has 10,000 users who access all applications from an on-premises data center. You plan to create a Microsoft 365 subscription and to migrate data to the cloud.

You plan to implement directory synchronization.

User account and group accounts must sync to Microsoft Azure Directory (Azure AD) successfully. You discover that several user accounts fail to sync to Azure AD.

You need to identify which user accounts failed to sync. You must resolve the issue as quickly as possible. What should you do?

- A. From Active Directory Administrative Center, search for all the users, and then modify the properties of the user accounts.
- B. Run idfix.exe, and then click Complete.
- C. From Windows PowerShell, run the Start-AdSyncSyncCycle –PolicyType Delta command.
- D. Run idfix.exe, and then click Edit.

Answer: D

Explanation:

IdFix is used to perform discovery and remediation of identity objects and their attributes in an on-premises Active Directory environment in preparation for migration to Azure Active Directory. IdFix is intended for the Active Directory administrators responsible for directory synchronization with Azure Active Directory. Reference:
<https://docs.microsoft.com/en-us/office365/enterprise/prepare-directory-attributes-for-synch-with-idfix> <https://www.microsoft.com/en-gb/download/details.aspx?id=36832>

NEW QUESTION 8

- (Exam Topic 5)

You have a Microsoft 365 E5 subscription.

You have an Azure AD tenant named contoso.com that contains the following users:

- Admin 1
- Admin2
- User1

Contoso.com contains an administrative unit named AU1 that has no role assignments. User1 is a member of AU1.

Answer Area

Statements	Yes	No
You can add Admin1 as a member of AU1.	<input type="radio"/>	<input type="radio"/>
You can add User1 as a member of AU2.	<input type="radio"/>	<input type="radio"/>
You can assign Admin2 the User administrator role for AU1.	<input type="radio"/>	<input type="radio"/>

- A. Mastered
- B. Not Mastered

Answer: A

Explanation:

Answer Area

Statements	Yes	No
You can add Admin1 as a member of AU1.	<input checked="" type="radio"/>	<input type="radio"/>
You can add User1 as a member of AU2.	<input checked="" type="radio"/>	<input type="radio"/>
You can assign Admin2 the User administrator role for AU1.	<input type="radio"/>	<input checked="" type="radio"/>

NEW QUESTION 9

- (Exam Topic 5)

Your company uses on-premises Windows Server File Classification Infrastructure 9FCI). Some documents on the on-premises file servers are classified as Confidential.

You migrate the files from the on-premises file servers to Microsoft SharePoint Online.

You need to ensure that you can implement data loss prevention (DLP) policies for the uploaded files based on the Confidential classification.

What should you do first?

- A. From the SharePoint admin center, create a managed property.
- B. From the SharePoint admin center, configure hybrid search.
- C. From the Security & Compliance Center PowerShell, run the New-DlpComplianceRule cmdlet.
- D. From the Security & Compliance Center PowerShell, run theNew-DataClassification cmdlet.

Answer: A

Explanation:

Your organization might use Windows Server FCI to identify documents with personally identifiable information (PII) such as social security numbers, and then classify the document by setting the Personally Identifiable Information property to High, Moderate, Low, Public, or Not PII based on the type and number of occurrences of PII found in the document. In Office 365, you can create a DLP policy that identifies documents that have that property set to specific values, such as High and Medium, and then takes an action such as blocking access to those files.

Before you can use a Windows Server FCI property or other property in a DLP policy, you need to create a managed property in the SharePoint admin center.

Reference:

<https://docs.microsoft.com/en-us/microsoft-365/compliance/protect-documents-that-have-fci-or-other-properties>

NEW QUESTION 10

- (Exam Topic 5)

You have a Microsoft 365 tenant that contains the users shown in the following table.

Name	Email address
User1	User1@contoso.com
User2	User2@contoso.com
User3	User3@contoso.com

Microsoft Exchange Online has the mail flow rules shown in the following table

Name	Priority
Rule1	0
Rule2	1
Rule3	2

Rule1 has the following settings:

Answer Area

Statements	Yes	No
If User1 sends an email to User3, User3 receives the email.	<input type="radio"/>	<input type="radio"/>
If User1 sends an email, a disclaimer is added to the email.	<input type="radio"/>	<input type="radio"/>
If an email is sent to User2, two disclaimers are added to the email.	<input type="radio"/>	<input type="radio"/>

- A. Mastered
- B. Not Mastered

Answer: A

Explanation:

Answer Area

Statements	Yes	No
If User1 sends an email to User3, User3 receives the email.	<input type="radio"/>	<input checked="" type="radio"/>
If User1 sends an email, a disclaimer is added to the email.	<input checked="" type="radio"/>	<input type="radio"/>
If an email is sent to User2, two disclaimers are added to the email.	<input checked="" type="radio"/>	<input type="radio"/>

NEW QUESTION 10

- (Exam Topic 5)

Your company has a Microsoft 365 subscription and a Microsoft Azure Active Directory (Azure AD) tenant named contoso.onmicrosoft.com.

An external vendor has a Microsoft account that has a username of user1@outlook.com. You plan to provide user1@outlook.com with access to several resources

in the subscription.

You need to add the external user account to contoso.onmicrosoft.com. The solution must ensure that the external vendor can authenticate by using user1@outlook.com.

What should you do?

- A. From Azure Cloud Shell, run the New-AzureADUser cmdlet and specify –UserPrincipalName user1@outlook.com.
- B. From the Microsoft 365 admin center, add a contact, and then specify user1@outlook.com as the email address.
- C. From the Azure portal, add a new guest user, and then specify user1@outlook.com as the email address.
- D. From the Azure portal, add a custom domain name, and then create a new Azure AD user and use user1@outlook.com as the username.

Answer: C

Explanation:

You can invite guest users to the directory, to a group, or to an application. After you invite a user through any of these methods, the invited user's account is added to Azure Active Directory (Azure AD), with a user type of Guest. The guest user must then redeem their invitation to access resources. An invitation of a user does not expire.

The invitation will include a link to create a Microsoft account. The user can then authenticate using their Microsoft account. In this question, the external vendor already has a Microsoft account (user1@outlook.com) so he can authenticate using that.

Reference:

<https://docs.microsoft.com/en-us/azure/active-directory/b2b/add-users-administrator>

NEW QUESTION 11

- (Exam Topic 5)

Note: This question is part of a series of questions that present the same scenario. Each question in the series contains a unique solution that might meet the stated goals. Some question sets might have more than one correct solution, while others might not have a correct solution.

After you answer a question in this section, you will NOT be able to return to it. As a result, these questions will not appear in the review screen.

Your company has a main office and three branch offices. All the branch offices connect to the main office by using a WAN link. The main office has a high-speed Internet connection. All the branch offices connect to the Internet by using the main office connections.

Users use Microsoft Outlook 2016 to connect to a Microsoft Exchange Server mailbox hosted in the main office.

The users report that when the WAN link in their office becomes unavailable, they cannot access their mailbox.

You create a Microsoft 365 subscription, and then migrate all the user data to Microsoft 365.

You need to ensure that all the users can continue to use Outlook to receive email messages if a WAN link fails.

Solution: You enable Cached Exchange Mode for all the Outlook profiles. Does this meet the goal?

A. Yes

B. No

Answer: B

NEW QUESTION 15

- (Exam Topic 5)

Note: This question is part of a series of questions that present the same scenario. Each question in the series contains a unique solution that might meet the stated goals. Some question sets might have more than one correct solution, while others might not have a correct solution.

After you answer a question in this section, you will NOT be able to return to it. As a result these questions will not appear in the review screen.

Your company has a main office and three branch offices. All the branch offices connect to the main office by using a WAN link. The main office has a high-speed Internet connection. All the branch offices connect to the Internet by using the main office connection.

Users use Microsoft Outlook 2016 to connect to 4 Microsoft Exchange Server mailbox hosted in the main office.

The users report that when the WAN link in their office becomes unavailable, they cannot access their mailbox.

You create a Microsoft 365 subscription, and then migrate all the user data to Microsoft 365.

You need to ensure that all the users can continue to use Outlook to receive email messages if a WAN link fails.

Solution: For each device, you configure an additional Outlook profile that uses IMAP. Does this meet the goal?

A. Yes

B. NO

Answer: B

NEW QUESTION 19

- (Exam Topic 5)

You have a hybrid deployment of Microsoft 365 that contains the users shown in the following table.

Name	Member of
User1	Group2
User2	Group1, Group2
User3	Group1

You have an on-premises web app named AppA. Group1 has permissions to access AppA. You configure an Azure Active Directory (Azure AD) Application Proxy. You add an Application Proxy entry for AppA as shown the exhibit. (Click the Exhibit tab.)

Add your own on-premises application

+ Add

X Discard

Application proxy provides single sign-on (SSO) and secure remote access for web applications hosted on-premises. [Learn more about Application Proxy](#)

Basic Settings

Name *

AppA

Internal Url *

https://Server1.contoso.com

External Url

https://

appa

-contoso1919.msappproxy.net/

https://appa-contoso1919.msappproxy.net/

Pre Authentication

Passthrough

Connector Group

Default

Additional Settings

Backend Application Timeout

Default

Use HTTP-Only Cookie

Yes

No

Use Secure Cookie

Yes

No

Use Persistent Cookie

Yes

No

Translate URLs In

Headers

Yes

No

Application Body

Yes

No

You assign the AppA enterprise application in Azure to Group2.
For each of the following statements, select Yes if the statement is true. Otherwise, select No.
NOTE: Each correct selection is worth one point.

Statements	Yes	No
User1 can access AppA by using the external URL.	<input type="radio"/>	<input type="radio"/>
User2 can access AppA in the My Apps portal.	<input type="radio"/>	<input type="radio"/>
User3 can access AppA by using the external URL.	<input type="radio"/>	<input type="radio"/>

- A. Mastered
- B. Not Mastered

Answer: A

Explanation:

Box 1: No
User1 is in Group2. The enterprise app is assigned to Group2. However, the authentication method is “Passthrough” so the authentication will be passed to the on-premises web app. Only Group1 has access to the web app. Therefore, User1 will not be able to access the web app.
Box 2: Yes.
User2 is in Group1 and Group2. The enterprise app is assigned to Group2. The authentication method is “Passthrough” so the authentication will be passed to the on-premises web app. Group1 has access to the web app. Therefore, User2 will be able to access the web app in MyApps.
Box 3: No
User3 is in Group1. Group1 has access to the web app so User3 could access the app on-premises. However, the enterprise app is assigned to Group2 which User3 is not a member of. Therefore, User3 will not be able to access the external URL of the web app.

NEW QUESTION 20

- (Exam Topic 5)
Your network contains an Active Directory domain named .Ki.ituin.com that is synced to Microsoft Azure Active Directory (Azure AD).
The domain contains 100 user accounts.
The city attribute for all the users is set to the city where the user resides.
You need to modify the value of the city attribute to the three letter airport code of each city. What should you do?

- A. from Active Directory Administrative Center, select the Active Directory users, and then modify the Property settings.B From the Microsoft 365 admin center, select the users, and then use the Bulk actions option.
- B. From Azure Cloud Shell, run the Get-AzureADUsers, and then use the Bulk actions option.
- C. From Azure Cloud Shell, run the Get-AzureADUser and set-AzureADUser cmdlets.

D. From Windows PowerShell on a domain controller, run the Get-AzureADUser and Set-AzureADUser cmdlets.

Answer: C

Explanation:

The user accounts are synced from the on-premise Active Directory to the Microsoft Azure Active Directory (Azure AD). Therefore, the city attribute must be changed in the on-premise Active Directory.
 You can use Windows PowerShell on a domain controller and run the Get-ADUser cmdlet to get the required users and pipe the results into Set-ADUser cmdlet to modify the city attribute.

Reference:

<https://docs.microsoft.com/en-us/powershell/module/addsadministration/set-aduser?view=win10-ps>

NEW QUESTION 21

- (Exam Topic 5)

You have a Microsoft SharePoint Online site and an on-premises file server. The site contains the files shown in the following table.

Name	In SharePoint library	Last modified
File1.docx	Documents	1/11/2019
File2.docx	Documents	1/12/2019

The file server contains the files shown in the following table.

Name	In folder	Last modified
File1.docx	D:\Folder1	1/1/2020
File2.xlsx	D:\Folder1	1/13/2020
File2.xlsx	D:\Folder2	1/7/2020
File3.pptx	D:\Folder2	1/20/2020

You migrate D:\Folder1 and D:\Folder2 to the Documents library by using the SharePoint Migration Tool as shown in the following exhibit.

All migration settings

General

Only perform scanning ⓘ ☐ Off

Preserve file share permissions ⓘ ☒ On

Users

Azure Active Directory Lookup ⓘ ☒ On

User mapping file ⓘ

Filters

Keep all versions ⓘ ☒ On

Migrate hidden files ⓘ ☒ On

Migrate files created after ⓘ

Migrate files modified after ⓘ

For each of the following statements, select Yes if the statement is true. Otherwise, select No.
 NOTE: Each correct selection is worth one point.

Statements	Yes	No
There will be two versions of File1.docx in the Documents library.	<input type="radio"/>	<input type="radio"/>
There will be two copies of File2.xlsx in the Documents library.	<input type="radio"/>	<input type="radio"/>
There will be a single copy of File3.pptx in the Documents library.	<input type="radio"/>	<input type="radio"/>

- A. Mastered
- B. Not Mastered

Answer: A

Explanation:

You can't have two files with the same name and extension in a SharePoint documents library. If a file on the source server has the same name and extension as an existing file in the document library, this will cause a conflict. The options for dealing with a conflict are: Skip, Merge, or Overwrite. The "Keep all versions" setting in the exhibit is used to retain the file history for a migrated file. It does not create multiple versions of a file in a document library.

Box 1: No
File1.docx exists in the document library so this will cause a conflict.

Box 2: No
Migrating two File2.xlsx files will cause a conflict.

Box 3: Yes
There is only one File3.pptx in the source server and none in the document library so there will be no conflict.

NEW QUESTION 24

- (Exam Topic 5)
You need to meet the application requirement for the Office 365 ProPlus applications. You create a XML file that contains the following settings.

```
<Add SourcePath="\\Server1\OfficeSoftware"
  OfficeClientEdition="32"
  Channel="Targeted"
  AllowCdnFallback="True">
  <Product ID="O365ProPlusRetail">
    <Language ID="MatchOS" Fallback="en-us" />
  </Product>
</Add>
```

Use the drop-down menus to select the choice that complete each statement based on the information presented in the graphic.
NOTE: Each correct selection is worth one point.

Answer Area

Office 365 ProPlus feature updates will be installed [answer choice].

automatically once a year
automatically twice a year
manually

To meet the technical requirement for Office 365 ProPlus, [answer choice].

Change SourcePath to DownloadPath.
Set the value for AllowCdnFallback to False.
Add SCLCacheOverride=1 to the Product section.

- A. Mastered
- B. Not Mastered

Answer: A

Explanation:

Answer Area

Office 365 ProPlus feature updates will be installed [answer choice].

automatically once a year
automatically twice a year
manually

To meet the technical requirement for Office 365 ProPlus, [answer choice].

Change SourcePath to DownloadPath.
Set the value for AllowCdnFallback to False.
Add SCLCacheOverride=1 to the Product section.

NEW QUESTION 25

- (Exam Topic 5)
You have a Microsoft 365 subscription you use Active Directory (Azure AD) tenant named contoso.com. The tenant contains the Windows 10 devices shown in the following table.

Name	Version	Language
Device1	x86	German
Device2	x64	English
Device3	x64	French

All the devices are managed by using Microsoft Endpoint Manager and are members of a group named Group1.
From the Microsoft Endpoint Manager admin center, you create an app suite named App1 for Microsoft Office 365 apps.
You configure the App1 settings as shown in the exhibit. (Click the Exhibit tab.)

App Suite Settings

X

These settings apply to all apps you have selected in the suite.
[Learn more](#)

Architecture *

32-bit64-bit

Update channel *

Semi-Annual

Version to install on end user devices. [Learn more](#)

LatestSpecific

Specific version

Latest version

Remove other versions of Office (MSI) from end user devices.
[Learn more](#)

YesNo

Automatically accept the app end user license agreement

YesNo

Use shared computer activation

YesNo

Languages

German, OS Languages

You assign App1 to Group1.
For each of the following statements, select Yes if the statement is true. Otherwise, select No.
Note: Each correct selection is worth one point.

Statements	Yes	No
On Device1, Office 365 ProPlus will be installed and the display language will be German.	<input type="radio"/>	<input type="radio"/>
On Device2, Office 365 ProPlus will be installed and both the German and English display languages will be installed.	<input type="radio"/>	<input type="radio"/>
On Device3, Office 365 ProPlus will be installed and both the German and French display languages will be installed.	<input type="radio"/>	<input type="radio"/>

- A. Mastered
B. Not Mastered

Answer: A

Explanation:

Box 1: No

Device1 is x86 (32-bit) so Office 365 will not be installed. Box 2: Yes

Device2 is x64 (64-bit) so Office 365 will be installed. The German language pack will be installed and the OS language pack (English) will be installed.

Box 3: Yes

Device2 is x64 (64-bit) so Office 365 will be installed. The German language pack will be installed and the OS language pack (French) will be installed.

Reference:

<https://docs.microsoft.com/en-us/mem/intune/apps/apps-add-office365>

NEW QUESTION 28

- (Exam Topic 5)

Please wait while the virtual machine loads. Once loaded, you may proceed to the lab section. This may take a few minutes, and the wait time will not be deducted from your overall test time.

When the Next button is available, click it to access the lab section. In this section, you will perform a set of tasks in a live environment. While most functionality will be available to you as it would be in a live

environment, some functionality (e.g., copy and paste, ability to navigate to external websites) will not be possible by design.

Scoring is based on the outcome of performing the tasks stated in the lab. In other words, it doesn't matter how you accomplish the task, if you successfully perform it, you will earn credit for that task.

Labs are not timed separately, and this exam may have more than one lab that you must complete. You can use as much time as you would like to complete each lab. But, you should manage your time appropriately to ensure that you are able to complete the lab(s) and all other sections of the exam in the time provided.

Please note that once you submit your work by clicking the Next button within a lab, you will NOT be able to return to the lab.

You may now click next to proceed to the lab. Lab information

Use the following login credentials as needed:

To enter your username, place your cursor in the Sign in box and click on the username below.

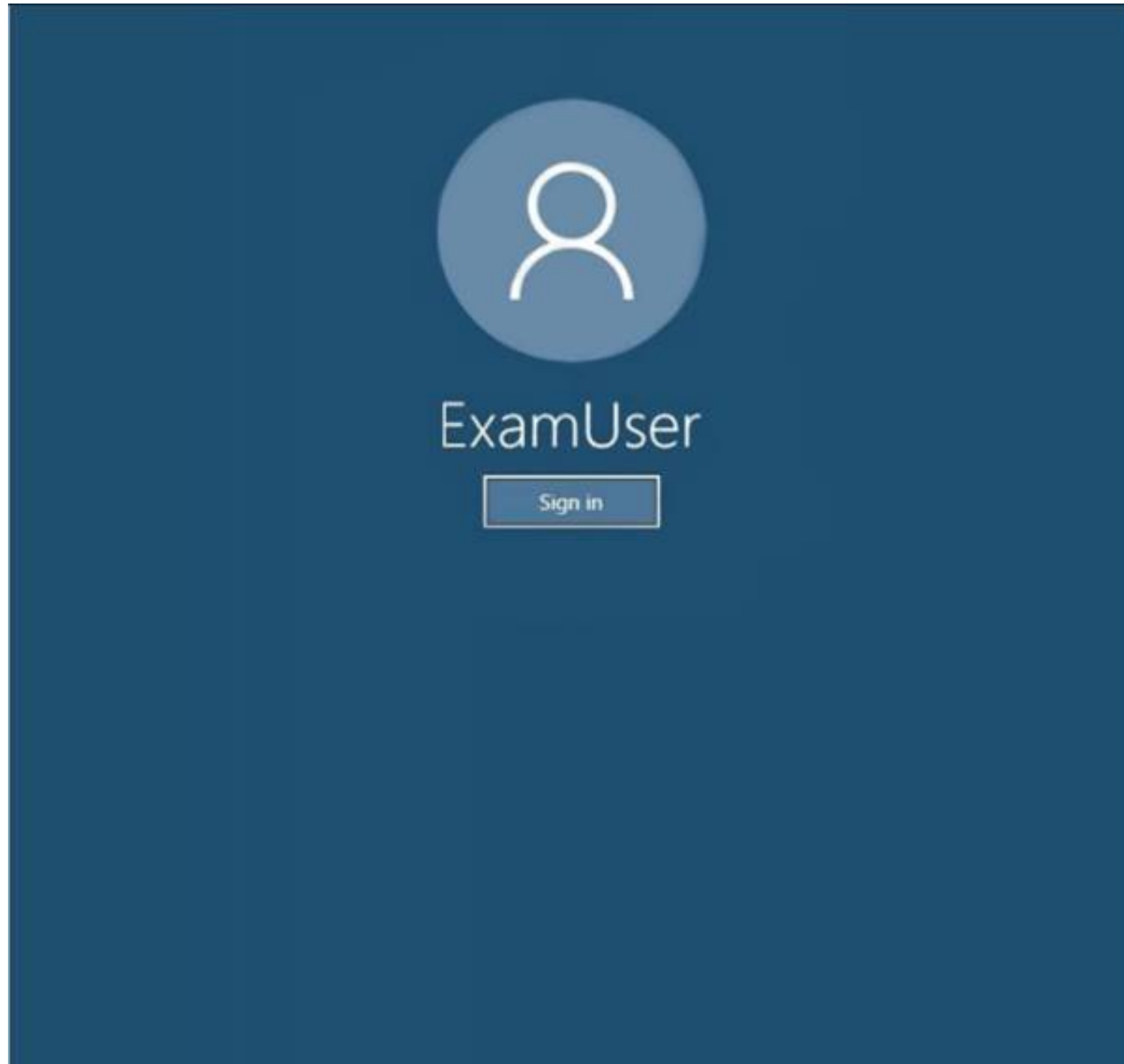
To enter your password, place your cursor in the Enter password box and click on the password below.

Microsoft 365 Username: admin@LODSe1211885.onmicrosoft.com Microsoft 365 Password: oL9z0=?Nq@ox

If the Microsoft 365 portal does not load successfully in the browser, press CTRL-K to reload the portal in a new browser tab.

The following information is for technical support purposes only:

Lab Instance: 11098651



You need to ensure that all the users in your organization are prompted to change their password every 180 days. To answer the question, sign in to the Microsoft 365 portal.

- A. Mastered
- B. Not Mastered

Answer: A

Explanation:

You need to configure the Password Expiration Policy.

- * 1. Sign in to the Microsoft 365 Admin Center.
- * 2. In the left navigation pane, expand the Settings section then select the Settings option.
- * 3. Click on Security and Privacy.
- * 4. Select the Password Expiration Policy.
- * 5. Ensure that the checkbox labelled "Set user passwords to expire after a number of days" is ticked.
- * 6. Enter 180 in the "Days before passwords expire" field.
- * 7. Click the 'Save changes' button.

NEW QUESTION 33

- (Exam Topic 5)

Please wait while the virtual machine loads. Once loaded, you may proceed to the lab section. This may take a few minutes, and the wait time will not be deducted from your overall test time.

When the Next button is available, click it to access the lab section. In this section, you will perform a set of tasks in a live environment. While most functionality will be available to you as it would be in a live environment, some functionality (e.g., copy and paste, ability to navigate to external websites) will not be possible by design.

Scoring is based on the outcome of performing the tasks stated in the lab. In other words, it doesn't matter how you accomplish the task, if you successfully perform it, you will earn credit for that task.

Labs are not timed separately, and this exam may have more than one lab that you must complete. You can use as much time as you would like to complete each lab. But, you should manage your time appropriately to ensure that you are able to complete the lab(s) and all other sections of the exam in the time provided. Please note that once you submit your work by clicking the Next button within a lab, you will NOT be able to return to the lab. You may now click next to proceed to the lab. Lab information
Use the following login credentials as needed:
To enter your username, place your cursor in the Sign in box and click on the username below.
To enter your password, place your cursor in the Enter password box and click on the password below.
Microsoft 365 Username: admin@LODSe426243.onmicrosoft.com Microsoft 365 Password: 3&YWYjse-6-d
If the Microsoft 365 portal does not load successfully in the browser, press CTRL-K to reload the portal in a new browser tab.
The following information is for technical support purposes only:
Lab Instance: 10887751

You need to ensure that all mobile devices that connect to Microsoft Exchange Online meet the following requirements:

- A password must be used to access the devices.
- Data on the devices must be encrypted.

- A. Mastered
- B. Not Mastered

Answer: A

Explanation:

You need to modify the default mobile device mailbox policy.

- * 1. Go to the Exchange Admin Center.
- * 2. Select 'mobile' then select 'mobile device mailbox policies'.
- * 3. Click the 'Create a policy' button.
- * 4. Select the Default policy and click the edit icon (pencil icon).
- * 5. Select the 'Security' link to open the security settings.
- * 6. Tick the 'Require a password' checkbox.
- * 7. Tick the 'Require encryption on device' checkbox.
- * 8. Click the Save button to save the changes. References:

<https://docs.microsoft.com/en-us/exchange/clients-and-mobile-in-exchange-online/exchange-activesync/mobile>

NEW QUESTION 35

- (Exam Topic 5)

Note: This question is part of a series of questions that present the same scenario. Each question in the series contains a unique solution that might meet the stated goals. Some question sets might have more than one correct solution, while others might not have a correct solution.

After you answer a question in this section, you will NOT be able to return to it. As a result, these questions will not appear in the review screen.

Your network contains an Active Directory domain.

You deploy a Microsoft Azure Active Directory (Azure AD) tenant. Another administrator configures the domain to synchronize to Azure AD.

You discover that 10 user accounts in an organizational unit (OU) are NOT synchronized to Azure AD. All the other user accounts synchronized successfully.

You review Azure AD Connect Health and discover that all the user account synchronizations completed successfully.

You need to ensure that the 10 user accounts are synchronized to Azure AD. Solution: You run idfix.exe and report the 10 user accounts.

Does this meet the goal?

- A. Yes
- B. No

Answer: B

Explanation:

The question states that "all the user account synchronizations completed successfully". If there were problems with the 10 accounts that needed fixing with idfix.exe, there would have been synchronization errors in Azure AD Connect Health.

It is likely that the 10 user accounts are being excluded from the synchronization cycle by a filtering rule. Reference:

<https://docs.microsoft.com/en-us/azure/active-directory/hybrid/how-to-connect-sync-configure-filtering>

NEW QUESTION 37

- (Exam Topic 5)

Your company has three main offices and one branch office. The branch office is used for research. The company plans to implement a Microsoft 365 tenant and to deploy multi-factor authentication.

You need to recommend a Microsoft 365 solution to ensure that multi-factor authentication is enforced only for users in the branch office

What should you include in the recommendation?

- A. Azure AD password protection
- B. a Microsoft Endpoint Manager Device compliance policy
- C. Azure AD conditional access
- D. a Microsoft Endpoint Manager Device configuration profile

Answer: B

NEW QUESTION 40

- (Exam Topic 5)

Your network contains an on-premises Active Directory domain. The domain contains the users shown in the following table.

Name	Country	Organizational unit (OU)
User1	United States	OU1
User2	Canada	OU1
User3	United States	OU2

You have a Microsoft 365 subscription that is linked to an Azure Active Directory (Azure AD) tenant named contoso.com. You configure Azure AD Connect to sync the on-premises domain to contoso.com as shown in the following exhibit.

Answer Area

Statements	Yes	No
User1 syncs to Azure AD.	<input type="radio"/>	<input type="radio"/>
User2 syncs to Azure AD.	<input type="radio"/>	<input type="radio"/>
User3 syncs to Azure AD.	<input type="radio"/>	<input type="radio"/>

- A. Mastered
- B. Not Mastered

Answer: A

Explanation:

Answer Area

Statements	Yes	No
User1 syncs to Azure AD.	<input checked="" type="radio"/>	<input type="radio"/>
User2 syncs to Azure AD.	<input checked="" type="radio"/>	<input type="radio"/>
User3 syncs to Azure AD.	<input checked="" type="radio"/>	<input type="radio"/>

NEW QUESTION 41

- (Exam Topic 5)

Your company recently purchased a Microsoft 365 subscription. You enable Microsft Azure Multi-Factor Authentication (MFA) for all 500 users in the Azure Active Directory (Azure tenant) You need to generate a report that lists all the users who Azure registration process. What is the best approach to achieve the goal? More than one answer choice achieve the goal. Select the Best answer.

- A. From Azure Cloud Shell, run the Get-Msoluser cmdlet.
- B. From the Azure Active Directory admin center, use the Risky sign-ins blade.
- C. From the Azure Active Directory admin center, use the Multi-factor Authentication – Server Status blade.
- D. From Azure Cloud Shell, run the Get-AzureADUser cmdlet.

Answer: A

NEW QUESTION 42

- (Exam Topic 5)

Note: This question is part of a series of questions that present the same scenario. Each question in the series contains a unique solution that might meet the stated goals. Some question sets might have more than one correct solution, while others might not have a correct solution. After you answer a question in this section, you will NOT be able to return to it. As a result, these questions will not appear in the review screen. You have a hybrid deployment of Microsoft 365 that contains the objects shown in the following table.

Name	Type	Source
User1	User	Azure Active Directory (Azure AD)
User2	User	Windows Server Active Directory
Group1	Group	Cloud
Group2	Group	Windows Server Active Directory

Azure AD Connect has the following settings:

- > Password Hash Sync: Enabled
- > Password writeback: Enabled
- > Group writeback: Enabled

You need to add User2 to Group 2. Solution: You use the Azure Active Directory admin center. Does this meet the goal?

- A. Yes
- B. No

Answer: A

NEW QUESTION 46

- (Exam Topic 5)

Note: This question is part of a series of questions that present the same scenario. Each question in the series contains a unique solution that might meet the stated goals. Some question sets might have more than one correct solution, while others might not have a correct solution.

After you answer a question in this section, you will NOT be able to return to it. As a result, these questions will not appear in the review screen.

Your company plans to deploy several Microsoft Office 365 services.

You need to design an authentication strategy for the planned deployment. The solution must meet the following requirements:

- * Users must be able to authenticate during business hours only.
- * Authentication requests must be processed successfully if a single server fails.
- * When the password for an on-premises user account expires, the new password must be enforced the next time the user signs in.
- * Users who connect to Office 365 services from domain-joined devices that are connected to the internal network must be signed in automatically.

Solution: You design an authentication strategy that uses password hash synchronization and seamless SSO. The solution contains two servers that have an Authentication Agent installed.

Does this meet the goal?

- A. Yes
- B. No

Answer: B

Explanation:

Reference:

<https://docs.microsoft.com/en-us/azure/security/azure-ad-choose-authn>

NEW QUESTION 48

- (Exam Topic 5)

Please wait while the virtual machine loads. Once loaded, you may proceed to the lab section. This may take a few minutes, and the wait time will not be deducted from your overall test time.

When the Next button is available, click it to access the lab section. In this section, you will perform a set of tasks in a live environment. While most functionality will be available to you as it would be in a live environment, some functionality (e.g., copy and paste, ability to navigate to external websites) will not be possible by design.

Scoring is based on the outcome of performing the tasks stated in the lab. In other words, it doesn't matter how you accomplish the task, if you successfully perform it, you will earn credit for that task.

Labs are not timed separately, and this exam may have more than one lab that you must complete. You can use as much time as you would like to complete each lab. But, you should manage your time appropriately to ensure that you are able to complete the lab(s) and all other sections of the exam in the time provided.

Please note that once you submit your work by clicking the Next button within a lab, you will NOT be able to return to the lab.

You may now click next to proceed to the lab.

Lab information

Use the following login credentials as needed:

To enter your username, place your cursor in the Sign in box and click on the username below.

To enter your password, place your cursor in the Enter password box and click on the password below.

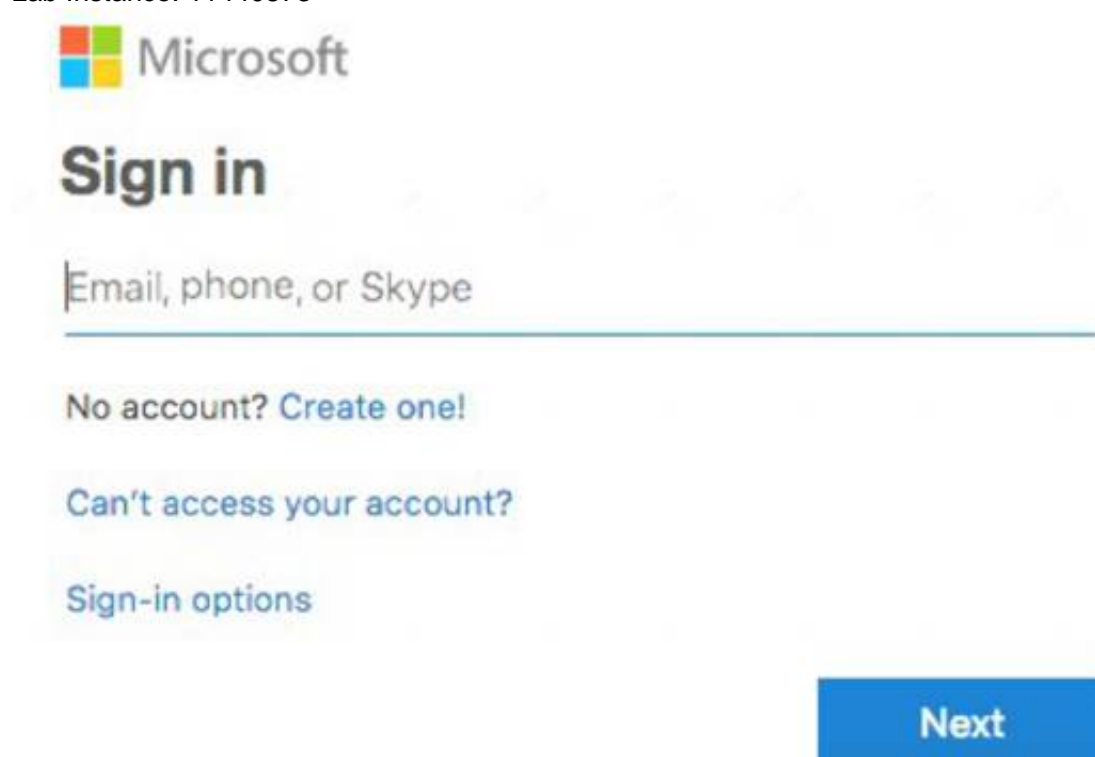
Microsoft 365 Username: admin@LODSe878763.onmicrosoft.com

Microsoft 365 Password: m3t^We\$Z7&xy

If the Microsoft 365 portal does not load successfully in the browser, press CTRL-K to reload the portal in a new browser tab.

The following information is for technical support purposes only:

Lab Instance: 11440873



Your organization recently purchased a projector that can be moved easily between conference rooms. You need to ensure that any user in the organization can add the projector to a Microsoft Outlook meeting

request. The solution must ensure that a user named Lee Gu must approve all meeting requests.

To answer, sign in to the Microsoft 365 portal.

- A. Mastered
- B. Not Mastered

Answer: A

Explanation:

You need to create a resource mailbox in Exchange.

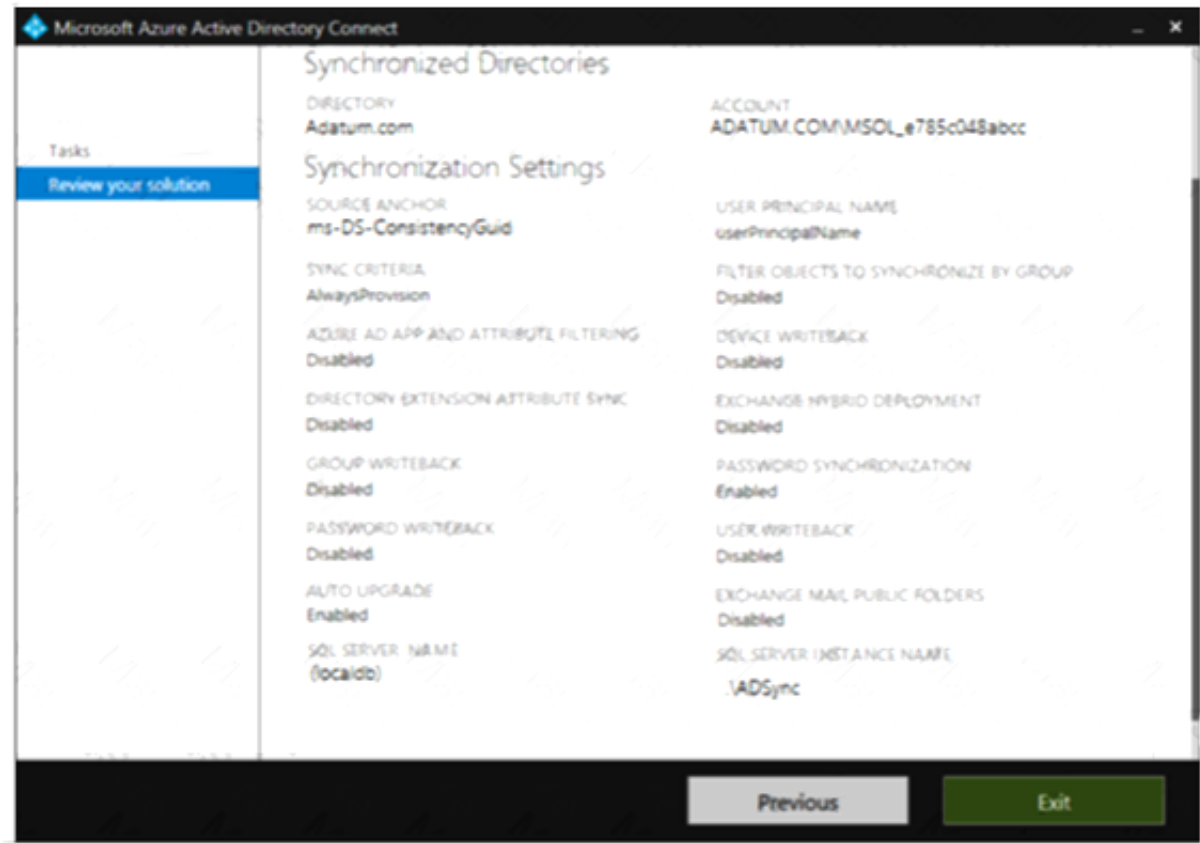
- * 1. Go to the Exchange Admin Center.

- * 2. In the left navigation pane, select Recipients.
- * 3. Click the Resources link.
- * 4. Click the plus (+) icon and select 'Equipment Mailbox'.
- * 5. Give the mailbox a name such as 'Projector1'.
- * 6. Enter the name projector1 in the email address field.
- * 7. Click the Save button to create the equipment mailbox.
- * 8. In the resource mailbox list, select the new mailbox and click the Edit icon (pencil icon).
- * 9. Select 'Booking Delegates' in the menu list.
- * 10. Select the option, "Select delegates who can accept or decline booking requests".
- * 11. Click the plus (+) icon and add Lee Gu as a delegate.
- * 12. Click the Save button to save the changes.

NEW QUESTION 53

- (Exam Topic 5)

Your network contains an on-premises Active Directory domain that is synced to Microsoft Azure Active Directory (Azure AD) as shown in the following exhibit.



An on-premises Active Directory user account named Allan Yoo is synchronized to Azure AD. You view Allan's account from Microsoft 365 and notice that his username is set to Allan@contoso.onmicrosoft.com.

For each of the following statements, select Yes if the statement is true. Otherwise, select No. NOTE: Each correct selection is worth one point.

Statements	Yes	No
From the Azure portal, you can reset the password of Allan Yoo.	<input type="radio"/>	<input type="radio"/>
From the Azure portal, you can configure the job title of Allan Yoo.	<input type="radio"/>	<input type="radio"/>
From the Azure portal, you can configure the usage location of Allan Yoo.	<input type="radio"/>	<input type="radio"/>

- A. Mastered
- B. Not Mastered

Answer: A

Explanation:

Allan Yoo's user account is synchronized from the on-premise Active Directory. This means that most user account settings have to be configured in the on-premise Active Directory.

In the exhibit, Password Writeback is disabled. Therefore, you cannot reset the password of Allan Yoo from the Azure portal.

You also cannot change Allan Yoo's job title in the Azure portal because his account is synchronized from the on-premise Active Directory.

One setting that you can configure for synchronized user accounts is the usage location. The usage location must be configured on a user account before you can assign licenses to the user.

Reference:

<https://docs.microsoft.com/en-us/azure/active-directory/authentication/concept-sspr-writeback>

NEW QUESTION 58

- (Exam Topic 5)

Note: This question is part of a series of questions that present the same scenario. Each question in the series contains a unique solution that might meet the stated goals. Some question sets might have more than one correct solution, while others might not have a correct solution.

After you answer a question in this section, you will NOT be able to return to it. As a result, these questions will not appear in the review screen.

You have a Microsoft 365 subscription.

You discover that some external users accessed content on a Microsoft SharePoint site. You modify the SharePoint sharing policy to prevent sharing outside your organization.

You need to be notified if the SharePoint policy is modified in the future. Solution: From the SharePoint site, you create an alert.

Does this meet the goal?

- A. Yes
- B. No

Answer: B

Explanation:
You need to create a threat management policy in the Security & Compliance admin center.

NEW QUESTION 60

- (Exam Topic 5)
You have Microsoft 365 tenant that contains a Microsoft Power Platform environment named Environment1 (default). Environment1 contains a Microsoft Dataverse database.
In the tenant, you create a user named User1. You assign a Microsoft Power Apps license to User1. Which security role for Environment1 is assigned automatically to User1?

- A. Environment maker
- B. System customizer
- C. Delegate
- D. System customizer

Answer: B

Explanation:
Reference:
<https://docs.microsoft.com/en-us/power-platform/admin/database-security#predefined-security-roles>

NEW QUESTION 63

- (Exam Topic 5)
You have three devices enrolled in Microsoft Intune as shown in the following table.

Name	Platform	BitLocker Drive Encryption (BitLocker)	Member of
Device1	Windows 10	Disabled	Group3
Device2	Windows 10	Disabled	Group2, Group3
Device3	Windows 10	Disabled	Group2

The device compliance policies in Intune are configured as shown in the following table.

Name	Platform	Require BitLocker	Assigned
Policy1	Windows 10 and later	Require	Yes
Policy2	Windows 10 and later	Not configured	Yes
Policy3	Windows 10 and later	Require	No

The device compliance policies have the assignment shown in the following table.

Name	Assigned to
Policy1	Group3
Policy2	Group2

For each of the following statements, select Yes if the statement is true. Otherwise, select No.
NOTE: Each correct selection is worth one point.

Statements	Yes	No
Device1 is compliant.	<input type="radio"/>	<input type="radio"/>
Device2 is compliant.	<input type="radio"/>	<input type="radio"/>
Device3 is compliant.	<input type="radio"/>	<input type="radio"/>

- A. Mastered
- B. Not Mastered

Answer: A

Explanation:
Device 1:
No because Device1 is in group3 which has Policy1 assigned which requires BitLocker. Device 2:
No because Device2 is in group3 which has Policy1 assigned which requires BitLocker. Device2 is also in Group2 which has Policy2 assigned but the BitLocker

requirement is not configured in Policy2.
Device3:
Yes because Device3 is in Group2 which has Policy2 assigned but the BitLocker requirement is not configured in Policy2.
Reference:
<https://blogs.technet.microsoft.com/cbernier/2017/07/11/windows-10-intune-windows-bitlocker-management-ye>

NEW QUESTION 65

- (Exam Topic 5)
You have an Active Directory domain named Adatum.com that is synchronized to Azure Active Directory as shown in the exhibit.

Microsoft Azure Active Directory Connect

Well done!
Tasks

Review your solution

Synchronized Directories

DIRECTORY	ACCOUNT
Adatum.com	Adatum.com\administrator

Synchronized Settings

SOURCE ANCHOR	USER PRINCIPAL NAME
objectGUID	userPrincipalName
SYNC CRITERIA	FILTER OBJECTS TO SYNCHRONIIZE BY GROUP
AlwaysProvision	Disabled
AZURE AD APP AND ATTRIBUTE FILTERING	DEVICE WRITEBACK
Disabled	Enabled
DIRECTORY EXTENSION ATTRIBUTE SYNC	EXCHANGE HYBRID DEPLOYMENT
Disabled	Disabled
GROUP WRITEBACK	PASSWORD HASH SYNCHRONIZATION
Enabled	Enabled
PASSWORD WRITEBACK	USER WRITEBACK
Disabled	Disabled
AUTO UPGRADE	EXCHANGE MAIL PUBLIC FOLDERS
Suspended	Disabled
SQL SERVER NAME	SQL SERVER INSTANCE NAME
(localdb)	.\ADSync

Previous

Exit

Use the drop-down menus to select the answer choice that completes each statement based on the information presented in the graphic.
NOTE: Each correct selection is worth one point.

If you create a security group in Azure AD, the group will [answer choice].

not sync to adatum.com

sync to adatum.com as a security group

sync to adatum.com as a distribution group

If you join a computer to Azure AD, the object will [answer choice].

not sync to adatum.com

sync to the Computers container in adatum.com

sync to the LostAndFound container in adatum.com

sync to the RegisteredDevices container in adatum.com

- A. Mastered
- B. Not Mastered

Answer: A

Explanation:
Group Writeback is enabled in the Azure AD Connect configuration so groups created in Azure Active Directory will be synchronized to the on-premise Active Directory. A security group created in Azure Active Directory will be synchronized to the on-premise Active Directory as a security group.
Device Writeback is enabled in the Azure AD Connect configuration so computers joined to the Azure Active Directory will be synchronized to the on-premise Active Directory. They will sync to the RegisteredDevices container in the on-premise Active Directory.
Reference:
<https://docs.microsoft.com/en-us/azure/active-directory/hybrid/how-to-connect-device-writeback>

NEW QUESTION 69

- (Exam Topic 5)
You have a Microsoft 365 subscription that uses an Azure Directory (Azure AD) tenant named Contoso.com. The tenant contains the users shown in the following table.

Name	Role
User1	Exchange administrator
User2	User administrator
User3	Global administrator
User4	None

You add another user named user5 to the User administrator role. You need to identify which management tasks User5 can perform. Which two tasks should you identify? Each correct answer presents a complete solution.

- A. Reset the password of any user in Azure AD.
- B. Delete any user in Azure AD.
- C. Reset the password of User2 and User4 only.
- D. Reset the password of User4 only.
- E. Delete User1, User2, and User4 only.
- F. Delete User2 and User4 only.

Answer: CF

Explanation:

Users with the User Administrator role can create users and manage all aspects of users with some restrictions (see below). Only on users who are non-admins or in any of the following limited admin roles:

- > Directory Readers
- > Guest Inviter
- > Helpdesk Administrator
- > Message Center Reader
- > Reports Reader
- > User Administrator Reference:

<https://docs.microsoft.com/en-us/azure/active-directory/users-groups-roles/directory-assign-admin-roles#availab>

NEW QUESTION 70

- (Exam Topic 5)

Your company has an Azure Active Directory (Azure AD) tenant named contoso.com and a Microsoft 365 subscription. Contoso.com contains the users shown in the following table.

Name	Group
User1	Group1
User2	None

You add an enterprise application named App1 to contoso.com. You configure the following self-service settings for App1:

- > Allow users to request access to this application is set to Yes.
- > To which group should assigned users be added is set to Group1.
- > Who is allowed to approve access to this application is set to User2.
- > Require approval before granting access to this application is set to Yes.

For each of the following statements, select Yes if the statement is true. Otherwise, select No.

NOTE: Each correct selection is worth one point.

Statements	Yes	No
User1 can request access to App1.	<input type="radio"/>	<input type="radio"/>
When User2 requests access to App1, the user is added to Group1 automatically.	<input type="radio"/>	<input type="radio"/>
User2 can approve requests for App1.	<input type="radio"/>	<input type="radio"/>

- A. Mastered
- B. Not Mastered

Answer: A

Explanation:

Box 1: Yes.

User1 can request access to App1 because "Allow users to request access to this application" is set to Yes. Box 2: No.

User2 is an approver. If User2 requests access to App1, he will still need to approve the request before he is added to Group1.

Box 3: Yes.

User2 can approve requests for App1 because "Who is allowed to approve access to this application" is set to User2.

Reference:

<https://docs.microsoft.com/en-us/azure/active-directory/manage-apps/manage-self-service-access>

NEW QUESTION 73

- (Exam Topic 5)

Your company has a Microsoft 365 subscription that contains the following domains: Contoso.onmicrosoft.com
 Contoso.com

You plan to add the following domains to Microsoft 365 and to use them with Exchange Online:

- > Sub1.contoso.onmicrosoft.com
- > Sub2.contoso.com
- > Fabrikam.com

You need to identify the minimum number of DNS records that must be added for Exchange Online to receive inbound email messages for the three domains. How many DNS records should you add? To answer, select the appropriate options in the answer area.

NOTE: Each correct selection is worth one point.

MX records:

▼
0
1
2
3

CNAME records:

▼
0
1
2
3

- A. Mastered
- B. Not Mastered

Answer: A

Explanation:

Box 1: 2

You don't need to verify Sub1.contoso.onmicrosoft.com because the onmicrosoft.com domain and DNS is managed by Microsoft. You also don't need to configure an MX record for Sub1.contoso.onmicrosoft.com because that will be done by Microsoft.

For sub2.contoso.com, you don't need to verify the domain because you have already verified its parent domain contoso.com. However, you do need an MX record to direct email for that domain to Exchange Online.

For Fabrikam.com, you will need to verify the domain. You will need an MX record to direct email for that domain to Exchange Online.

Box 2: 0

You 'should' create CNAME records for autodiscover to point your email clients to Exchange Online to connect to the mailboxes. However, you don't have to. You could configure the email client manually. Therefore, the minimum number of CNAME records required is zero.

NEW QUESTION 78

- (Exam Topic 5)

You have a Microsoft 365 subscription.

Your company deploys an Active Directory Federation Services (AD FS) solution. You need to configure the environment to audit AD FS user authentication. Which two actions should you perform? Each correct answer presents part of the solution. NOTE: Each correct selection is worth one point.

- A. From all the AD FS servers, run audltpol.exe.
- B. From all the domain controllers, run the set-AdminAuditLogConfig cmdlet and specify the -LogiLevel parameter.
- C. On a domain controller install Azure AD Connect Health for AD DS.
- D. From the Azure AO Connect server, run the Register-AzureADConnectHealthSyncAgent cmdlet.
- E. On an server, install Azure AD Connect Health for AD FS.

Answer: DE

Explanation:

To audit AD FS user authentication, you need to install Azure AD Connect Health for AD FS. The agent should be installed on an AD FS server. After the installation, you need to register the agent by running the Register-AzureADConnectHealthSyncAgent cmdlet.

Reference:

<https://docs.microsoft.com/en-us/azure/active-directory/hybrid/how-to-connect-health-agent-install> <https://docs.microsoft.com/en-us/azure/active-directory/hybrid/how-to-connect-health-adfs>

NEW QUESTION 83

- (Exam Topic 5)

You are developing a daemon application that reads all the emails in the Inbox of a specific Microsoft 365 mailbox. Some emails contain meeting dates and room mailbox names. The application has the following requirements:

- Move each processed email to a subfolder in the mailbox
- If an email contains meeting data, create an event in the corresponding room mailbox calendar. Which Microsoft Graph permissions should you grant for the application?

- A. Calendars.Readwrite and Mail.Read
- B. ReadWrite delegated permissions

- C. Calendars.Readwrite.Shared and Mai
- D. Readwrite delegated permissions
- E. Calendars.Readwrite and Mail.Read application permissions
- F. Calendars .ReadWrite and Mail.Readwrite application permissions

Answer: D

NEW QUESTION 87


- (Exam Topic 5)

You have a data loss prevention (DLP) policy.


You need to increase the likelihood that the DLP policy will apply to data that contains medical terms from the International Classification of Diseases (ICD-9-CM).

The solution must minimize the number of false positives.

Which two settings should you modify? To answer, select the appropriate settings in the answer area. NOTE: Each correct selection is worth one point.

Content contains 

Any of these ▾

PII Identifiers 

Sensitive information type

U.S. Social Security Number (SSN)

Add ▾

Instance count

min

1

max

any

Match accuracy

min


50

max

100

and ▾

Any of these ▾

Medical Terms 

Sensitive information type

International Classification of Diseases (ICD-9-CM)

Instance count

min

1

max

any

Match accuracy

min

50

max

100

- A. Mastered
- B. Not Mastered

Answer: A

Explanation:

You can tune your rules by adjusting the instance count and match accuracy to make it harder or easier for content to match the rules. Each sensitive information type used in a rule has both an instance count and match accuracy.

To make the rule easier to match, decrease the min count and/or increase the max count. You can also set max to any by deleting the numerical value.

To minimize the number of false positives, we need to increase the minimum match accuracy.

A sensitive information type is defined and detected by using a combination of different types of evidence. Commonly, a sensitive information type is defined by multiple such combinations, called patterns. A pattern that requires less evidence has a lower match accuracy (or confidence level), while a pattern that requires more evidence has a higher match accuracy (or confidence level).

Reference:

<https://docs.microsoft.com/en-us/office365/securitycompliance/data-loss-prevention-policies>

<https://docs.microsoft.com/en-us/office365/securitycompliance/what-the-sensitive-information-types-look-for#i>

NEW QUESTION 88

- (Exam Topic 5)

In Microsoft 365, you configure a data loss prevention (DLP) policy named Policy1. Policy1 detects the sharing of United States (US) bank account numbers in email messages and attachments.

Policy1 is configured as shown in the exhibit. (Click the Exhibit tab.)

Use actions to protect content when the conditions are met.

Restrict access or encrypt the content

- ☒ Block people from sharing and restrict access to shared content
- By default, users are blocked from sending email messages to people. You can choose who has access to shared SharePoint and OneDrive content.
- Block these people from accessing SharePoint and OneDrive content
- ☐ Everyone. Only the content owner, the lastmodifier, and the site admin will continue to have access.
- ☒ Only people outside your organization. People inside your organization will continue to have access.
- ☐ Encrypt email messages (applies only to content to Exchange)

You need to ensure that internal users can email documents that contain US bank account numbers to external users who have an email suffix of contoso.com. What should you configure?

- A. an action
- B. a group
- C. a condition
- D. an exception

Answer: D

Explanation:
You need to add an exception. In the Advanced Settings of the DLP policy, you can add a rule to configure the Conditions and Actions. There is also an 'Add Exception' button. This gives you several options that you can select as the exception. One of the options is 'except when recipient domain is'. You need to select that option and enter the domain name contoso.com.
Reference:
<https://docs.microsoft.com/en-us/office365/securitycompliance/data-loss-prevention-policies#how-dlp-policies>

NEW QUESTION 93

- (Exam Topic 5)
You receive the following JSON document when you use Microsoft Graph to query the current signed-in user.

```
{
  "@odata.context": "https://graph.microsoft.com/v1.0/$metadata#users/$entity",
  "businessPhones": [
    "+1 555 444 222"
  ],
  "displayName": "BenSmith",
  "givenName": "Ben",
  "jobTitle": "Developer",
  "mail": "ben.smith@contoso.com",
  "mobilePhone": "+1 555 444 222",
}
```

Answer Area

Statements	Yes	No
If you query a URI of https://graph.microsoft.com/v1.0/me/photo/\$value, you will get the profile picture.	<input type="radio"/>	<input type="radio"/>
If you query a URI of https://graph.microsoft.com/v1.0/users/ben.smith@contoso.com/photo/\$value, you will get the profile picture.	<input type="radio"/>	<input type="radio"/>
If you query a URI of https://graph.microsoft.com/v1.0/users/5fa74bb7-b45b-426d-8ac7-446f890feeb5/photo/\$value, you will get the profile picture.	<input type="radio"/>	<input type="radio"/>

- A. Mastered
- B. Not Mastered

Answer: A

Explanation:

Answer Area

Statements	Yes	No
If you query a URI of https://graph.microsoft.com/v1.0/me/photo/\$value, you will get the profile picture.	<input checked="" type="radio"/>	<input type="radio"/>
If you query a URI of https://graph.microsoft.com/v1.0/users/ben.smith@contoso.com/photo/\$value, you will get the profile picture.	<input checked="" type="radio"/>	<input type="radio"/>
If you query a URI of https://graph.microsoft.com/v1.0/users/5fa74bb7-b45b-426d-8ac7-446f090feeb5/photo/\$value, you will get the profile picture.	<input checked="" type="radio"/>	<input type="radio"/>

NEW QUESTION 96

- (Exam Topic 5)

Your network contains an Active Directory domain and a Microsoft Azure Active Directory (Azure AD) tenant.

The network uses a firewall that contains a list of allowed outbound domains. You began to implement directory synchronization.

You discover that the firewall configuration contains only the following domain names in the list of allowed domains:

- *.microsof.com
- *.office.com

Directory synchronization fails.

You need to ensure that directory synchronization completes successfully.

What is the best approach to achieve the goal? More than one answer choice may achieve the goal. Select the BEST answer.

- A. From the firewall, allow the IP address range of the Azure data center for outbound communication.
- B. From Azure AD Connect, modify the Customize synchronization options task
- C. Deploy an Azure AD Connect sync server in staging mode.
- D. From the firewall, create a list of allowed inbound domains.
- E. From the firewall, modify the list of allowed outbound domains.

Answer: E

Explanation:

Azure AD Connect needs to be able to connect to various Microsoft domains such as login.microsoftonline.com. Therefore, you need to modify the list of allowed outbound domains on the firewall.

Reference:

<https://docs.microsoft.com/en-us/azure/active-directory/hybrid/reference-connect-ports>

NEW QUESTION 99

- (Exam Topic 5)

Your company has a sales system that emails an alert to all the members of the sales department when a new sale is made.

You need to ensure that a notification is posted to a team channel when a new sale is made. The solution must minimize development effort.

Which two actions should you perform? Each correct answer presents part of the solution. NOTE: Each correct selection is worth one point.

- A. Post XML to the webhook URL from the existing sales system.
- B. Set the configurationUrl property of a connector in the manifest
- C. Get an incoming webhook for the channel
- D. Post JSON to the webhook URL from the existing sales system.

Answer: AC

NEW QUESTION 101

- (Exam Topic 5)

Your company has on-premises servers and a Microsoft Azure Active Directory (Azure AD) tenant. Several months ago, the Azure AD Connect Health agent was installed on all the servers.

You review the health status of all the servers regularly.

Recently, you attempted to view the health status of a server named Server1 and discovered that the server is NOT listed on the Azure Active Directory Connect Servers list.

You suspect that another administrator removed Server1 from the list. You need to ensure that you can view the health status of Server1.

What are two possible ways to achieve the goal? Each correct answer presents a complete solution. NOTE: Each correct selection is worth one point.

- A. From Windows PowerShell, run the Register-AzureADConnectHealthSyncAgent cmdlet.
- B. From Azure Cloud shell, run the Connect-AzureAD cmdlet.
- C. From Server1, change the Azure AD Connect Health services Startup type to Automatic (Delayed Start).
- D. From Server1, change the Azure AD Connect Health services Startup type to Automatic.
- E. From Server1, reinstall the Azure AD Connect Health agent.

Answer: AE

Explanation:

question states that another administrator removed Server1 from the list. To view the health status of Server1, you need to re-register the AD Connect Health Sync Agent. You can do this manually by running the Register-AzureADConnectHealthSyncAgent cmdlet. Alternatively, you can reinstall the Azure AD Connect Health agent. The Azure AD Connect Health agent is registered as part of the installation.

Reference:

<https://docs.microsoft.com/en-us/azure/active-directory/hybrid/how-to-connect-health-agent-install>

NEW QUESTION 104

- (Exam Topic 5)

You are securing a web API by using the Microsoft identity Platform. The web API must meet the following requirements:

- Authenticated Azure Active Directory (Azure AD) users must be able to retrieve user information from Azure AD.
- Authenticated Azure AD users must be able to manage Microsoft 365 groups.

You need to grant permissions for the web API. The solution must use the principle of least privilege. What should you grant? To answer, select the appropriate options in the answer area.

NOTE: Each correct selection is worth one point.

Answer Area

Configured permissions

Applications are authorized to call APIs when they are granted permissions by users/admins as include all the permissions the application needs. [Learn more about permissions and consent](#)

+ Add a permission

Grant admin consent for nuborocks

API / Permissions name	Type	Description
Microsoft Graph (2)		
Directory.AccessAsUser.All	Delegated	Read and write all groups
Group.Create		
Group.Read		
Group.ReadWrite.All		
User.Read	Delegated	Read all users' basic profiles
User.Read.All		
User.ReadBasic.All		
User.ReadWrite.All		

- A. Mastered
B. Not Mastered

Answer: A

Explanation:

Answer Area

Configured permissions

Applications are authorized to call APIs when they are granted permissions by users/admins as include all the permissions the application needs. [Learn more about permissions and consent](#)

+ Add a permission

Grant admin consent for nuborocks

API / Permissions name	Type	Description
Microsoft Graph (2)		
Directory.AccessAsUser.All	Delegated	Read and write all groups
Group.Create		
Group.Read		
Group.ReadWrite.All		
User.Read	Delegated	Read all users' basic profiles
User.Read.All		
User.ReadBasic.All		
User.ReadWrite.All		

NEW QUESTION 109

- (Exam Topic 5)

You have a Microsoft 365 Enterprise subscription.

You have a conditional access policy to force multi factor authentication when accessing Microsoft SharePoint from a mobile device

You need to view which users authenticated by using multi factor authentication. What should you do?

- A. From the Microsoft 365 admin center, view the Security Compliance reports.
B. From the Azure Active Directory admin center, view the user sign-ins.
C. From the Microsoft 365 admin center, view the Usage reports.
D. From the Azure Active Directory admin center, view the audit logs.

Answer: B

Explanation:

With the sign-ins activity report in the Azure portal, you can get the information you need to determine how your environment is doing. The sign-ins report can provide you with information about the usage of managed applications and user sign-in activities, which includes information about multi-factor authentication (MFA) usage. The MFA data gives you insights into how MFA is working in your organization

References:
<https://docs.microsoft.com/en-us/azure/active-directory/authentication/howto-mfa-reporting>

NEW QUESTION 114

- (Exam Topic 5)

Note: This question is part of a series of questions that present the same scenario. Each question in the series contains a unique solution that might meet the stated goals. Some question sets might have more than one correct solution, while others might not have a correct solution. After you answer a question in this section, you will NOT be able to return to it. As a result, these questions will not appear in the review screen.

Your network contains an on-premises Active Directory forest named contoso.com. The forest contains the following domains:

- > Contoso.com
- > East.contoso.com

An Azure AD Connect server is deployed to contoso.com. Azure AD Connect syncs to an Azure Active Directory (Azure AD) tenant. You deploy a new domain named west.contoso.com to the forest. You need to ensure that west.contoso.com syncs to the Azure AD tenant.

Solution: You install a new Azure AD Connect server in west.contoso.com and set AD Connect to active mode.

Does this meet the goal?

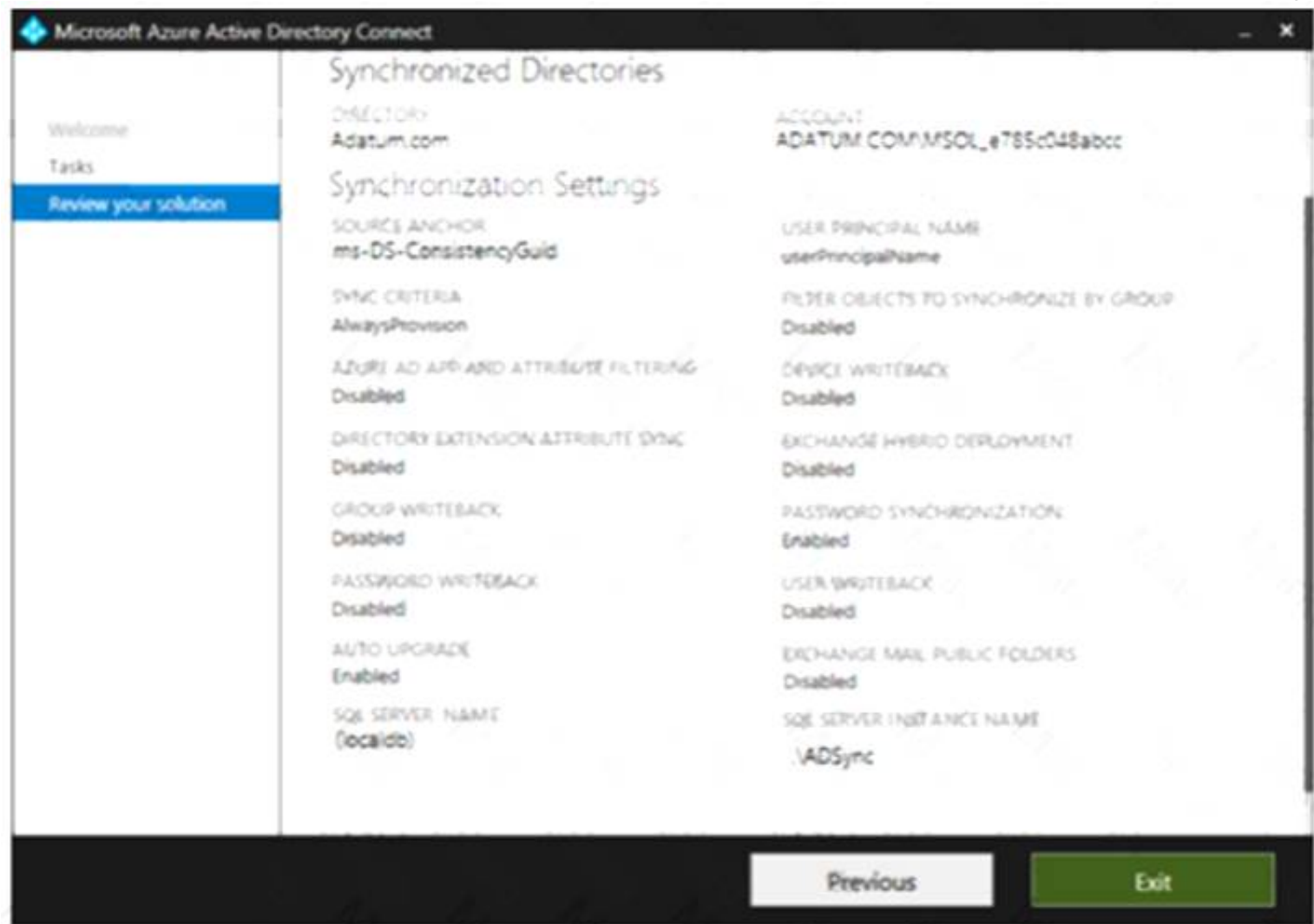
- A. Yes
- B. No

Answer: A

NEW QUESTION 117

- (Exam Topic 5)

Your company has a hybrid deployment of Microsoft 365. An on-premises user named User1 is synced to Microsoft Azure Active Directory (Azure AD). Azure AD Connect is configured as shown in the following exhibit.



Use the drop-down menus to select the answer choice that completes each statement based on the information presented in the graphic. NOTE: Each correct selection is worth one point.

User1 [answer choice].

cannot change her password from any Microsoft portals

can change her password by using self-service password reset feature only

an change her password from the Office 365 admin center only

If the password for User1 is changed in Active Directory, [answer choice].

the password will be synchronized to Azure AD

a new randomly generated password will be assigned to User1

the password in Azure AD will be unchanged

- A. Mastered
- B. Not Mastered

Answer: A

Explanation:

User1 cannot change her password from any Microsoft portals because Password Writeback is disabled in the Azure AD Connect configuration.

If the password for User1 is changed in Active Directory, the password will be synchronized to Azure AD because Password Synchronization is enabled in the Azure AD Connect configuration.

Reference:

<https://docs.microsoft.com/en-us/azure/active-directory/hybrid/how-to-connect-install-custom>

NEW QUESTION 121

- (Exam Topic 5)

A user receives the following message when attempting to sign in to <https://myapps.microsoft.com>:

"Your sign-in was blocked. We've detected something unusual about this sign-in. For example, you might be signing in from a new location, device, or app. Before you can continue, we need to verify your identity. Please contact your admin."

Which configuration prevents the users from signing in?

- A. Security & Compliance supervision policies
- B. Security & Compliance data loss prevention (DLP) policies
- C. Microsoft Azure Active Directory (Azure AD) conditional access policies
- D. Microsoft Azure Active Directory (Azure AD) Identity Protection policies

Answer: C

Explanation:

The user is being blocked due to a 'risky sign-in'. This can be caused by the user logging in from a device that hasn't been used to sign in before or from an unknown location.

Integration with Azure AD Identity Protection allows Conditional Access policies to identify risky sign-in behavior. Policies can then force users to perform password changes or multi-factor authentication to reduce their risk level or be blocked from access until an administrator takes manual action.

Reference:

<https://docs.microsoft.com/en-us/azure/active-directory/conditional-access/overview>

NEW QUESTION 124

- (Exam Topic 5)

Your company has an on-premises Microsoft SharePoint Server environment and a Microsoft 365 subscription.

When users search for content from Microsoft 365, you plan to include content from the on-premises SharePoint Server environment in the results.

You need to add crawled metadata from the on-premises SharePoint Server content to the Microsoft Office 365 search index.

What should you do first?

- A. Run the SharePoint Hybrid Configuration Wizard.
- B. Create a site collection that uses the Basic Search Center template.
- C. Run the SharePoint Migration Tool.
- D. Create a site collection that uses the Enterprise Search Center template.

Answer: A

NEW QUESTION 129

- (Exam Topic 5)

Note: This question is part of a series of questions that present the same scenario. Each question in the series contains a unique solution that might meet the stated goals. Some question sets might have more than one correct solution, while others might not have a correct solution.

After you answer a question in this section, you will NOT be able to return to it. As a result, these questions will not appear in the review screen.

Your network contains an Active Directory domain.

You deploy a Microsoft Azure Active Directory (Azure AD) tenant. Another administrator configures the domain to synchronize to Azure AD.

You discover that 10 user accounts in an organizational unit (OU) are NOT synchronized to Azure AD. All the other user accounts synchronized successfully.

You review Azure AD Connect Health and discover that all the user account synchronizations completed successfully.

You need to ensure that the 10 user accounts are synchronized to Azure AD.

Solution: From Azure AD Connect, you modify the Azure AD credentials. Does this meet the goal?

- A. Yes
- B. No

Answer: B

Explanation:

The question states that "all the user account synchronizations completed successfully". Therefore, the Azure AD credentials are configured correctly in Azure AD Connect. It is likely that the 10 user accounts are being excluded from the synchronization cycle by a filtering rule.

Reference:

<https://docs.microsoft.com/en-us/azure/active-directory/hybrid/how-to-connect-sync-configure-filtering>

NEW QUESTION 132

- (Exam Topic 5)

Your network contains an on-premises Active Directory domain. You have a Microsoft 365 subscription.

You implement a directory synchronization solution that uses pass-through authentication.

You configure Microsoft Azure Active Directory (Azure AD) smart lockout as shown in the following exhibit.

 Save  Discard

Custom smart lockout

Lockout threshold ⓘ

Lockout duration in seconds ⓘ

Custom banned passwords

Enforce custom list ⓘ ☒ Yes ☐ No

Custom banned password list ⓘ

password
Pa\$Sw0rd
Pa55w0rd
Contoso

Password protection for Windows Server Active Directory

Enable password protection on Windows Server Active Directory ⓘ ☒ Yes ☐ No

Mode ⓘ ☐ Enforced ☒ Audit

You discover that Active Directory users can use the passwords in the custom banned passwords list. You need to ensure that banned passwords are effective for all users.

Which three actions should you perform? Each correct answer presents part of the solution. NOTE: Each correct selection is worth one point.

- A. From a domain controller, install the Azure AD Password Protection Proxy.
- B. From a domain controller, install the Microsoft AAD Application Proxy connector.
- C. From Custom banned passwords, modify the Enforce custom list setting.
- D. From Password protection for Windows Server Active Directory, modify the Mode setting.
- E. From all the domain controllers, install the Azure AD Password Protection DC Agent.
- F. From Active Directory, modify the Default Domain Policy.

Answer: ACE

Explanation:

References:

Azure AD password protection is a feature that enhances password policies in an organization. On-premises deployment of password protection uses both the global and custom banned-password lists that are stored in Azure AD. It does the same checks on-premises as Azure AD does for cloud-based changes. These checks are performed during password changes and password reset scenarios.

You need to install the Azure AD Password Protection Proxy on a domain controller and install the Azure AD Password Protection DC Agent on all domain controllers. When the proxy and agent are installed and configured, Azure AD password protection will work.

In the exhibit, the password protection is configured in Audit mode. This is used for testing. To enforce the configured policy, you need to set the password protection setting to Enforced.

Reference:

<https://docs.microsoft.com/en-us/azure/active-directory/authentication/howto-password-ban-bad-on-premises-de> <https://docs.microsoft.com/en-us/azure/active-directory/authentication/concept-password-ban-bad-on-premises>

NEW QUESTION 133

- (Exam Topic 5)

You plan to develop a SharePoint Framework (SPfx) web part by using the ReactJS framework.

You need to ensure that all the web part fields and controls adopt the theme of the site when you deploy the web part. The solution must minimize development effort

What should you include in the solution?

- A. Material-UI
- B. FluentUI
- C. Microsoft Fluid Framework
- D. HTML5 and CSS

Answer: B

NEW QUESTION 135

- (Exam Topic 5)

Your network contains an on-premises Active Directory domain that syncs to Azure Active Directory (Azure AD).

The on-premises network contains a Microsoft SharePoint Server 2019 farm. The company purchases a Microsoft 365 subscription.

You have the users shown in the following table

Name	Source
User1	Windows Active Directory
User2	Azure Active Directory

You plan to assign User1 and User2 the required roles to run the SharePoint Hybrid Configuration Wizard. User1 will be used for on-premises credentials and User2 will be used for cloud credentials.

You need to assign the correct role to User2. The solution must use the principle of least privilege. Which role should you assign to User2?

- A. Application administrator
- B. SharePoint farm administrator
- C. Global administrator
- D. SharePoint administrator

Answer: C

Explanation:

To run the SharePoint Hybrid Configuration Wizard, you need to provide credentials of a user (in this case User2) of a Global Administrator account in Azure Active Directory.

Reference:

<https://www.c-sharpcorner.com/article/sharepoint-2019-enable-hybrid-experience/> <https://docs.microsoft.com/en-us/sharepoint/hybrid/accounts-needed-for-hybrid-configuration-and-testing>

NEW QUESTION 137

- (Exam Topic 5)

You have a Microsoft 365 tenant that contains 300 users.

The users have Domestic and International Calling Plan licenses.

What is the maximum user phone numbers and toll-free service phone numbers can you acquire? To answer, select the appropriate options in the answer area.

NOTE: Each correct selection is worth one point.

Number of user phone numbers: ▼

150
300
340
600

Number of toll-free service phone numbers: ▼

20
30
45
65

- A. Mastered
- B. Not Mastered

Answer: A

Explanation:

Graphical user interface, text, application, email Description automatically generated

Reference:

<https://docs.microsoft.com/en-us/microsoftteams/how-many-phone-numbers-can-you-get>

NEW QUESTION 139

- (Exam Topic 5)

Your network contains an Active Directory domain.

You deploy a Microsoft Azure Active Directory (Azure AD) tenant.

Another administrator configures the domain the synchronization to Azure AD.

You discover that 10 user accounts in an organizational unit (OU) are NOT synchronized to Azure AD. All the other user accounts synchronized to successfully.

You review Azure AD Connect Health and discover that all the user account synchronization completed. You discover AD Connect Health and discover that at the user account synchronization to Azure AD. Solution: You run idfix.exe and export the 10 user accounts.

- A. Yes
- B. No

Answer: B

NEW QUESTION 140

- (Exam Topic 5)

You have a Microsoft 365 E5 subscription that contains an Azure Active Directory (Azure AD) tenant named contoso.com. The tenant contains a Microsoft SharePoint Online site named Site1 and the accounts shown in the following table.

Name	Account type
UserA	User
UserB	User
GroupA	Security group

You have an on-premises server named Server1 that contains a folder named Folder1. Folder1 contains the files shown in the following table.

Name	Permission
File1	User1: Full control
File2	User2: Modify
File3	Group1: Full control

The User1, User2, and Group1 accounts have the security identifiers (SIDs) shown in the following table.

Name	SID
User1	S-1-5-21-4534338-1127018997-2609994386-1304
User2	S-1-5-21-4534338-1127018997-2609994386-1228
Group1	S-1-5-21-4534338-1127018997-2609994386-1106

You use the SharePoint Migration Tool to migrate Folder1 to Site1. You preserve the file share permissions and use the following user mapping file.
S-1-5-21-4534338-1127018997-2609994386-1304, UserA@Contoso.com, FALSE S-1-5-21-4534338-1127018997-2609994386-1228, UserB@Contoso.com, FALSE S-1-5-21-4534338-1127018997-2609994386-1106, GroupA, TRUE
For each of the following statements, select Yes if the statement is true. Otherwise, select No.
NOTE: Each correct selection is worth one point

Statements	Yes	No
UserA is the owner of File1 on Site1.	<input type="radio"/>	<input type="radio"/>
UserB is the owner of File2 on Site1.	<input type="radio"/>	<input type="radio"/>
GroupA is the owner of File3 on Site1.	<input type="radio"/>	<input type="radio"/>

- A. Mastered
- B. Not Mastered

Answer: A

Explanation:

Statements	Yes	No
UserA is the owner of File1 on Site1.	<input type="radio"/>	<input checked="" type="radio"/>
UserB is the owner of File2 on Site1.	<input type="radio"/>	<input checked="" type="radio"/>
GroupA is the owner of File3 on Site1.	<input type="radio"/>	<input checked="" type="radio"/>

NEW QUESTION 144

- (Exam Topic 5)
Your company is based in the United Kingdom (UK).
Users frequently handle data that contains Personally Identifiable Information (PII).
You create a data loss prevention (DLP) policy that applies to users inside and outside the company. The policy is configured as shown in the following exhibit.

New DLP policy

Choose the information to protect

Name your policy

Choose locations

Policy settings

Review your settings

Review your settings

Template name

U.K. Personally Identifiable Information (PII) Data

Edit

Policy name

U.K. Personally Identifiable Information (PII) Data

Edit

Applies to content in these locations

Exchange email

SharePoint sites

OneDrive accounts

Edit

Policy settings

Edit

In the content contains these types of sensitive info:
U.K. National Insurance Number (NINO), U.S. / U.K. Passport Number then notify people with a policy tip and email message.

If there are at least 10 instances of the same type of sensitive info, block access to the content and send an incident report with a high severity level but allow people to override.

Turn policy on after it's created?

Yes

Edit

Back

Create

Cancel

Use the drop-down menus to select the answer choice that completes each statement based in the information presented in the information presented in the graphic.

NOTE: Each correct selection is worth one point.

If a user attempts to upload a document to a Microsoft SharePoint site, and the document contains one UK passport number, the document will be [answer choice].

allowed

blocked without warning

blocked, but the user can override the policy

If a user attempts to email 100 UK passport numbers to a user in the same company, the email message will be [answer choice].

allowed

blocked without warning

blocked, but the user can override the policy

- A. Mastered
- B. Not Mastered

Answer: A

Explanation:

The text in the Policy Settings section of the exhibit explains what will happen.

If a user sends between 1 and 10 instances of the sensitive info (passport number), then a notification email and will be sent to the user and a policy tip will be displayed. The email will not be blocked though. Therefore, it will be allowed.

If a user sends more than 10 instances of the sensitive info (passport number), the email will be blocked and a high-severity alert generated. However, the user can override the block.

Reference:
<https://docs.microsoft.com/en-us/office365/securitycompliance/data-loss-prevention-policies>

NEW QUESTION 147

- (Exam Topic 5)

Your company has offices in several cities and 100.000 users. The network contains an Active Directory domain contoso.com.

You purchase Microsoft 365 and plan to deploy several Microsoft 365 services.

You are evaluating the implementation of pass-through authentication and seamless SSO. Azure AD Connect will NOT be in staging mode.

You need to identify the redundancy limits for the planned implementation.

What should you identify? To answer, select the appropriate options in the answer area. NOTE: Each correct selection is worth one point.

Passing Certification Exams Made Easy

visit - <https://www.surepassexam.com>

Maximum number of servers on which you can run
Azure AD Connect:

▼

1

2

4

6

11

Maximum number of servers on which you can run
standalone Authentication Agents:

▼

1

2

4

6

11

- A. Mastered
B. Not Mastered

Answer: A

Explanation:

Azure AD Connect can be active on only one server. You can install Azure AD Connect on another server for redundancy but the additional installation would need to be in Staging mode. An Azure AD connect installation in Staging mode is configured and ready to go but it needs to be manually switched to Active to perform directory synchronization.

Azure authentication agents can be installed on as many servers as you like. Reference:
<https://docs.microsoft.com/en-us/azure/active-directory/hybrid/how-to-connect-pta-quick-start>

NEW QUESTION 152

- (Exam Topic 5)

Note: This question is part of a series of questions that present the same scenario. Each question in the series contains a unique solution that might meet the stated goals. Some question sets might have more than one correct solution, while others might not have a correct solution.

After you answer a question in this section, you will NOT be able to return to it. As a result, these questions will not appear in the review screen.

You have a Microsoft 365 subscription.

You need to prevent users from accessing your Microsoft SharePoint Online sites unless the users are connected to your on-premises network.

Solution: From the Azure Active Directory admin center, you create a trusted location and a conditional access policy.

Does this meet the goal?

- A. Yes
B. No

Answer: A

Explanation:

Conditional Access in SharePoint Online can be configured to use an IP Address white list to allow access. References:

<https://docs.microsoft.com/en-us/azure/active-directory/conditional-access/location-condition> <https://techcommunity.microsoft.com/t5/Microsoft-SharePoint-Blog/Conditional-Access-in-SharePoint-Onlinea>

NEW QUESTION 155

- (Exam Topic 5)

Your company has a Microsoft 365 subscription that contains the users shown in the following table.

Name	Role
User1	Global administrator
User2	Security administrator, Guest inviter
User3	None
User4	Password administrator

You need to identify which users can perform the following administrative tasks:

- Modify the password protection policy.
- Create guest user accounts.

Which users should you identify for each task? To answer, select the appropriate options in the answer area. NOTE: Each correct selection is worth one point.

Modify the password protection policy:

User1 only
User1 and User2 only
User1, User2, and User4 only
User1, User2, User3, and User4

Create new guest users in Microsoft Azure Active Directory (Azure AD):

User1 only
User1 and User2 only
User1, User2, and User4 only
User1, User2, User3, and User4

- A. Mastered
- B. Not Mastered

Answer: A

Explanation:

Only a Global Admin can modify the password protection policy.

A Global Admin or a user with the Guest Inviter role can create guest accounts. Reference:

<https://docs.microsoft.com/en-us/azure/active-directory/authentication/howto-password-ban-bad-on-premises-op>

NEW QUESTION 158

- (Exam Topic 5)

Your network contains an Active Directory forest. The forest contains two domains named contoso.com and adatum.com.

Your company recently purchased a Microsoft 365 subscription. You deploy a federated identity solution to the environment.

You use the following command to configure contoso.com for federation. Convert-MsolDomainToFederated –DomainName contoso.com

In the Microsoft 365 tenant, an administrator adds and verifies the adatum.com domain name. You need to configure the adatum.com Active Directory domain for federated authentication.

Which two actions should you perform before you run the Azure AD Connect wizard? Each correct answer presents part of the solution.

NOTE: Each correct selection is worth one point.

- A. From Windows PowerShell, run the Convert-MsolDomainToFederated–DomainName contoso.com –SupportMultipleDomain command.
- B. From Windows PowerShell, run the New-MsolFederatedDomain–SupportMultipleDomain -DomainName contoso.com command.
- C. From Windows PowerShell, run the New-MsolFederatedDomain-DomainName adatum.com command.
- D. From Windows PowerShell, run the Update-MSOLFederatedDomain–DomainName contoso.com –SupportMultipleDomain command.
- E. From the federation server, remove the Microsoft Office 365 relying party trust.

Answer: AE

Explanation:

When the Convert-MsolDomainToFederated –DomainName contoso.com command was run, a relying party trust was created.

Adding a second domain (adatum.com in this case) will only work if the SupportMultipleDomain switch was used when the initial federation was configured by running the Convert-MsolDomainToFederated

–DomainName contoso.com command.

Therefore, we need to start again by removing the relying party trust then running the Convert-MsolDomainToFederated command again with the SupportMultipleDomain switch.

NEW QUESTION 160

- (Exam Topic 5)

You have a Microsoft Azure Active Directory (Azure AD) tenant named contoso.com that includes a user named User1.

You enable multi-factor authentication for contoso.com and configure the following two fraud alert settings: ➤ Set Allow users to submit fraud alerts: On

➤ Automatically block users who report fraud: On

You need to instruct the users in your organization to use the fraud reporting features correctly. What should you tell the users to do? To answer, select the appropriate options in the answer area. NOTE: Each correct selection is worth one point.

A user can report fraud on her account by:

Typing a special code after receiving an alert call
Sending an email message to an administrator
Using the Microsoft Authenticator app

If User1 reports fraud on his account, the account will be blocked automatically for:

6 hours
1 day
7 days
90 days

- A. Mastered
- B. Not Mastered

Answer: A

Explanation:

Code to report fraud during initial greeting: When users receive a phone call to perform two-step verification, they normally press # to confirm their sign-in. To report fraud, the user enters a code before pressing #. This code is 0 by default, but you can customize it.

Block user when fraud is reported: If a user reports fraud, their account is blocked for 90 days or until an administrator unblocks their account. An administrator can review sign-ins by using the sign-in report, and take appropriate action to prevent future fraud. An administrator can then unblock the user's account.

Reference:

<https://docs.microsoft.com/en-us/azure/active-directory/authentication/howto-mfa-mfasettings#fraud-alert>

NEW QUESTION 165

- (Exam Topic 5)

You have a Microsoft 365 subscription.

From the Security & Compliance admin center, you create a content search of all the mailboxes that contain the word ProjectX.

You need to export the results of the content search. What do you need to download the report?

- A. an export key
- B. a password
- C. a user certificate
- D. a certification authority (CA) certificate

Answer: A

Explanation:

When you export a report, the data is temporarily stored in a unique Azure Storage area in the Microsoft cloud before it's downloaded to your local computer.

To download the report from the Azure Storage Area, you need an export key. Reference:

<https://docs.microsoft.com/en-us/microsoft-365/compliance/export-a-content-search-report>

NEW QUESTION 167

- (Exam Topic 5)

Your company has a hybrid deployment of Microsoft 365.

Users authenticate by using pass-through authentication. Several Microsoft Azure AD Connect Authentication Agents are deployed.

You need to verify whether all the Authentication Agents are used for authentication. What should you do?

- A. From the Azure portal, use the Troubleshoot option on the Pass-through authentication page.
- B. From Performance Monitor, use the #PTA authentications counter.
- C. From the Azure portal use the Diagnostics settings on the Monitor blade.
- D. From Performance Monitor, use the Kerberos authentications counter.

Answer: A

Explanation:

On the Troubleshoot page, you can view how many agents are configured. If you click on the agents link, you can view the status of each agent. Each agent will have a status of Active or Inactive.

Reference:

<https://docs.microsoft.com/en-us/azure/active-directory/hybrid/tshoot-connect-pass-through-authentication>

NEW QUESTION 172

- (Exam Topic 5)

Your company has a Microsoft 365 subscription.

You need to identify which users performed the following privileged administration tasks:

- > Deleted a folder from the second-stage Recycle Bin in Microsoft SharePoint
- > Opened a mailbox of which the user was not the owner
- > Reset a user password

What should you use?

- A. Microsoft Azure Active Directory (Azure AD) audit logs
- B. Microsoft Azure Active Directory (Azure AD) sign-ins
- C. Security & Compliance content search
- D. Security & Compliance audit log search

Answer: A

Explanation:

References:

<https://docs.microsoft.com/en-us/azure/azure-monitor/platform/activity-logs-overview>

NEW QUESTION 173

- (Exam Topic 5)

Your on-premises network contains an Active Directory domain that syncs with an Azure Active Directory (Azure AD) tenant named contoso.com by using Azure AD Connect. Your company purchases another company that has an on-premises Active Directory domain named litwareinc.com. You need to sync litwareinc.com with contoso.com. What should you install in the litwareinc.com domain?

- A. an Azure AD Connect provisioning agent
- B. an Azure AD Connect instance in staging mode
- C. an active instance of Azure AD Connect
- D. an Azure AD application proxy connector

Answer: A

NEW QUESTION 175

- (Exam Topic 5)

Please wait while the virtual machine loads. Once loaded, you may proceed to the lab section. This may take a few minutes, and the wait time will not be deducted from your overall test time.

When the Next button is available, click it to access the lab section. In this section, you will perform a set of tasks in a live environment. While most functionality will be available to you as it would be in a live environment, some functionality (e.g., copy and paste, ability to navigate to external websites) will not be possible by design.

Scoring is based on the outcome of performing the tasks stated in the lab. In other words, it doesn't matter how you accomplish the task, if you successfully perform it, you will earn credit for that task.

Labs are not timed separately, and this exam may have more than one lab that you must complete. You can use as much time as you would like to complete each lab. But, you should manage your time appropriately to ensure that you are able to complete the lab(s) and all other sections of the exam in the time provided.

Please note that once you submit your work by clicking the Next button within a lab, you will NOT be able to return to the lab.

You may now click next to proceed to the lab. Lab information

Use the following login credentials as needed:

To enter your username, place your cursor in the Sign in box and click on the username below.

To enter your password, place your cursor in the Enter password box and click on the password below.

Microsoft 365 Username: admin@M365x981607.onmicrosoft.com Microsoft 365 Password: *yfLo7lr2&yIf the Microsoft 365 portal does not load successfully in the browser, press CTRL-K to reload the portal in a new browser tab.

The following information is for technical support purposes only:

Lab Instance: 10811525

You need to prevent non-administrators in your organization from registering applications.

- A. Mastered
- B. Not Mastered

Answer: A

Explanation:

You need to configure the App Registrations setting in Azure Active Directory.

- * 1. Go to the Azure Active Directory admin center.
- * 2. Select Azure Active Directory.
- * 3. Select 'User settings'
- * 4. In the 'App registrations' section, toggle the 'Users can register applications' setting to No.
- * 5. Click Save to save the changes.

NEW QUESTION 177

- (Exam Topic 5)

Note: This question is part of a series of questions that present the same scenario. Each question in the series contains a unique solution that might meet the stated goals. Some question sets might have more than one correct solution, while others might not have a correct solution.

After you answer a question in this section, you will NOT be able to return to it. As a result, these questions will not appear in the review screen.

Your network contains an on-premises Active Directory domain named contoso.com. The domain contains the users shown in the following table.

Name	UPN suffix
User1	Contoso.com
User2	Fabrikam.com

The domain syncs to an Azure Active Directory (Azure AD) tenant named contoso.com as shown in the exhibit. (Click the Exhibit tab.)

PROVISION FROM ACTIVE DIRECTORY



Azure AD Connect cloud provisioning

This feature allows you to manage provisioning from the cloud.

[Manage provisioning \(Preview\)](#)

Azure AD Connect sync

Sync Status	Enabled
Last Sync	Less than 1 hour ago
Password Hash Sync	Enabled

USER SIGN-IN



Federation	Disabled	0 domains
Seamless single sign-on	Enabled	1 domain
Pass-through authentication	Enabled	2 agents

User2 fails to authenticate to Azure AD when signing in as user2@fabrikam.com. You need to ensure that User2 can access the resources in Azure AD.

Solution: From the Azure Active Directory admin center, you add fabrikam.com as a custom domain. You instruct User2 to sign in as user2@fabrikam.com.

Does this meet the goal?

- A. Yes
- B. No

Answer: A

Explanation:

The on-premises Active Directory domain is named contoso.com. To enable users to sign on using a different UPN (different domain), you need to add the domain to Microsoft 365 as a custom domain.

NEW QUESTION 182

- (Exam Topic 5)

You have a Microsoft 365 tenant.

You have a line-of-business application named App1 that users access by using the My Apps portal.

After some recent security breaches, you implement a conditional access policy for App1 that uses Conditional Access App Control.

You need to be alerted by email if impossible travel is detected for a user of App1. The solution must ensure that alerts are generated for App1 only.

What should you do?

- A. From Microsoft Cloud App Security, modify the impossible travel alert policy.
- B. From Microsoft Cloud App Security, create a Cloud Discovery anomaly detection policy.
- C. From the Azure Active Directory admin center, modify the conditional access policy.
- D. From Microsoft Cloud App Security, create an app discovery policy.

Answer: A

Explanation:

Impossible travel detection identifies two user activities (is a single or multiple sessions) originating from geographically distant locations within a time period shorter than the time it would have taken the user to travel from the first location to the second.

We need to modify the policy so that it applies to App1 only. Reference:

<https://docs.microsoft.com/en-us/cloud-app-security/anomaly-detection-policy>

NEW QUESTION 183

- (Exam Topic 5)

You have a Microsoft 365 subscription and a DNS domain. The domain is hosted by a third-party DNS service.

You plan to add the domain to the subscription.

You need to use Microsoft Exchange Online to send and receive emails for the domain.

Which type of DNS record should you add to the DNS zone of the domain for each task? To answer, drag the appropriate records to the correct tasks. Each record may be used once, more than once, or not at all. You may need to drag the split bar between panes or scroll to view content.

NOTE: Each correct selection is worth one point.

Answer Area

Route email for the domain to Exchange Online

Enable Microsoft Outlook to auto discover the Exchange Online server for the domain.

Help prevent spam for the domain.

A

CNAME

MX

SRV

TXT

- A. Mastered
- B. Not Mastered

Answer: A

Explanation:

Box 1: MX

When you update your domain's MX record, all new email for anyone who uses your domain will now come to Microsoft 365.

Box 2: CNAME

Add CNAME records to connect other service. You can add CNAME records for each service that you want to connect.

Box 3: TXT

Add or edit an SPF TXT record to help prevent email spam Reference:

<https://docs.microsoft.com/en-us/microsoft-365/admin/get-help-with-domains/create-dns-records-at-any-dns-hos>

NEW QUESTION 186

- (Exam Topic 5)

Note: This question is part of a series of questions that present the same scenario. Each question in the series contains a unique solution that might meet the stated goals. Some question sets might have more than one correct solution, while others might not have a correct solution.

After you answer a question in this section, you will NOT be able to return to it. As a result, these questions will not appear in the review screen.

Your network contains an Active Directory domain.

You deploy a Microsoft Azure Active Directory (Azure AD) tenant. Another administrator configures the domain to synchronize to Azure AD.

You discover that 10 user accounts in an organizational unit (OU) are NOT synchronized to Azure AD. All the other user accounts synchronized successfully.

You review Azure AD Connect Health and discover that all the user account synchronizations completed successfully.

You need to ensure that the 10 user accounts are synchronized to Azure AD.

Solution: From the Synchronization Rules Editor, you create a new outbound synchronization rule. Does this meet the goal?

- A. Yes
- B. No

Answer: B

Explanation:

The question states that “all the user account synchronizations completed successfully”. Therefore, the synchronization rule is configured correctly. It is likely that the 10 user accounts are being excluded from the synchronization cycle by a filtering rule.

Reference:

<https://docs.microsoft.com/en-us/azure/active-directory/hybrid/how-to-connect-sync-configure-filtering>

NEW QUESTION 188

- (Exam Topic 5)

You have a Microsoft 365 E5 subscription.

You need to ensure that users are prompted for multi-factor authentication (MFA) when they attempt to access Microsoft SharePoint Online resources. Users must NOT be prompted for MFA when they attempt to access other Microsoft 365 services.

What should you do?

- A. From the Microsoft Endpoint Manager admin center, create an app protection policy.
- B. From the multi-factor authentication page, configure the users settings.
- C. From the Azure Active Directory admin center, create a conditional access policy.
- D. From the Cloud App Security admin center, create an app access policy.

Answer: C

Explanation:

Multi-factor authentication (MFA) is configured through conditional access policies. Reference:

<https://docs.microsoft.com/en-us/appcenter/general/configuring-aad-conditional-access>

NEW QUESTION 193

- (Exam Topic 5)

Please wait while the virtual machine loads. Once loaded, you may proceed to the lab section. This may take a few minutes, and the wait time will not be deducted from your overall test time.

When the Next button is available, click it to access the lab section. In this section, you will perform a set of tasks in a live environment. While most functionality will be available to you as it would be in a live environment, some functionality (e.g., copy and paste, ability to navigate to external websites) will not be possible by design.

Scoring is based on the outcome of performing the tasks stated in the lab. In other words, it doesn't matter how you accomplish the task, if you successfully perform it, you will earn credit for that task.

Labs are not timed separately, and this exam may have more than one lab that you must complete. You can use as much time as you would like to complete each lab. But, you should manage your time appropriately to ensure that you are able to complete the lab(s) and all other sections of the exam in the time provided.

Please note that once you submit your work by clicking the Next button within a lab, you will NOT be able to return to the lab.

You may now click next to proceed to the lab. Lab information

Use the following login credentials as needed:

To enter your username, place your cursor in the Sign in box and click on the username below.

To enter your password, place your cursor in the Enter password box and click on the password below.

Microsoft 365 Username: admin@LODSe426243.onmicrosoft.com Microsoft 365 Password: 3&YWYjse-6-d

If the Microsoft 365 portal does not load successfully in the browser, press CTRL-K to reload the portal in a new browser tab.

The following information is for technical support purposes only:

Lab Instance: 10887751

You plan to provide an external user named fabrikamuser@fabrikam.com with access to several resources in your Microsoft 365 tenant.

You need to ensure that the external user can be added to Office 365 groups.

- A. Mastered
- B. Not Mastered

Answer: A

Explanation:

You need to create a guest account for the external user.

* 1. Go to the Azure Active Directory admin center.

* 2. Select Users.

* 3. Click the 'New guest user' link.

* 4. Select the 'Invite user' option.

* 5. Give the account a name and enter fabrikamuser@fabrikam.com in the email address field.

* 6. Click the 'Invite' button. References:

<https://docs.microsoft.com/en-us/azure/active-directory/b2b/b2b-quickstart-add-guest-users-portal>

NEW QUESTION 194

- (Exam Topic 5)

Please wait while the virtual machine loads. Once loaded, you may proceed to the lab section. This may take a few minutes, and the wait time will not be deducted from your overall test time.

When the Next button is available, click it to access the lab section. In this section, you will perform a set of tasks in a live environment. While most functionality will be available to you as it would be in a live environment, some functionality (e.g., copy and paste, ability to navigate to external websites) will not be possible by design.

Scoring is based on the outcome of performing the tasks stated in the lab. In other words, it doesn't matter how you accomplish the task, if you successfully perform it, you will earn credit for that task.

Labs are not timed separately, and this exam may have more than one lab that you must complete. You can use as much time as you would like to complete each lab. But, you should manage your time appropriately to ensure that you are able to complete the lab(s) and all other sections of the exam in the time provided.

Please note that once you submit your work by clicking the Next button within a lab, you will NOT be able to return to the lab.
You may now click next to proceed to the lab. Lab information
Use the following login credentials as needed:
To enter your username, place your cursor in the Sign in box and click on the username below.
To enter your password, place your cursor in the Enter password box and click on the password below.
Microsoft 365 Username: admin@M365x981607.onmicrosoft.com Microsoft 365 Password: *yfLo7lr2&yIf the Microsoft 365 portal does not load successfully in the browser, press CTRL-K to reload the portal in a new browser tab.
The following information is for technical support purposes only:
Lab Instance: 10811525
You need to prevent the users in your organization from establishing voice calls from Microsoft Skype for Business to external Skype users.

- A. Mastered
- B. Not Mastered

Answer: A

Explanation:

You need to configure the External Communications settings in the Skype for Business admin center.
* 1. You need to go to the Skype for Business admin center. If you see a Skype for Business admin center in the admin center list in the Microsoft portal, open it and skip to step 4.
* 2. If you don't see a Skype for Business admin center in the admin center list in the Microsoft portal, open the Teams admin center.
* 3. In the Teams admin center, choose Skype > Legacy Portal.
* 4. In the Skype for Business admin center, select Organization.
* 5. Select External communications.
* 6. Untick the 'Let people use Skype for Business to communicate with Skype users outside your organization' checkbox.
* 7. Click Save to save the changes.

NEW QUESTION 197

- (Exam Topic 5)
You create a Microsoft 365 subscription.
You plan to deploy Microsoft Office 365 ProPlus applications to all the client computers at your company. You prepare the following XML file for the planned deployment.

```
<Configuration>
  <Add OfficeClientEdition="32"
    Channel="Broad">
    <Product ID="0365ProPlusRetail">
      <Language ID="en-us" />
    </Product>
  </Add>
  <Updates Enabled="TRUE"
    UpdatePath=""
    Channel="Targeted" />
  <Display Level="None"
    AcceptEULA="TRUE" />
</Configuration>
```

Use the drop-down menus to select the answer choice that completes each statement based on the information presented in the graphic.
NOTE: Each correct selection is worth one point.

Office 365 ProPlus feature updates will be installed [answer choice].

▼
once a month
once every six months
once a year

Office 365 ProPlus security updates will be installed [answer choice].

▼
once a month
every six months in January and July
every six months in March and September

- A. Mastered
- B. Not Mastered

Answer: A

Explanation:

References:
<https://docs.microsoft.com/en-us/deployoffice/configuration-options-for-the-office-2016-deployment-tool#updates> <https://docs.microsoft.com/en-us/deployoffice/overview-of-update-channels-for-office-365-proplus>

NEW QUESTION 201

- (Exam Topic 5)
Your company has a Microsoft Azure Active Directory (Azure AD) tenant named contoso.onmicrosoft.com. You purchase a domain named contoso.com from a registrar and add all the required DNS records.
You create a user account named User1. User1 is configured to sign in as user1@contoso.onmicrosoft.com. You need to configure User1 to sign in as

user1@contoso.com.

Which three actions should you perform in sequence? To answer, move the appropriate actions from the list of actions to the answer area and arrange them in the correct order.

Actions	Answer Area
Run Set-MsolDomainAuthentication - TenantID contoso.com	
Modify the email address of User1.	
Modify the username of User1.	
Verify the custom domain.	
Add a contoso.com as a SAN for an X.509 certificate.	
Add a custom domain name.	

- A. Mastered
- B. Not Mastered

Answer: A

Explanation:

The first step is to add the contoso.com domain to Office 365. You do this by adding a custom domain. When you add a custom domain to office 365, you can use the domain as your email address or to sign in to Office 365.

The second step is to verify the custom domain. This is to prove that you own the domain. You can verify the custom domain by adding a DNS record to the domain DNS zone.

When you have added and verified the domain, you can configure the user accounts to use it. To configure User1 to sign in as user1@contoso.com, you need to change the username of User1. In Office 365, the username is composed of two parts. The first part is the actual username (User1) and the second part is the domain. You need to modify the username of User1 by selecting the contoso.com domain from the dropdown list of domains. The dropdown list of domains contains the <domain>.onmicrosoft.com domain and any custom domains that have been added.

Reference:

<https://docs.microsoft.com/en-us/office365/admin/setup/add-domain?view=o365-worldwide>

NEW QUESTION 202

- (Exam Topic 5)

You have a Microsoft 365 E5 subscription that contains a group named Group 1.

You need to ensure that all the members of Group1 are notified when Microsoft 365 outages occur. The solution must minimize administrative effort. What should you do?

- A. From the Microsoft 365 admin center, configure a Service health email notification
- B. From the Exchange admin center, create an alert policy and configure an email notification.
- C. From the Microsoft 365 admin center, configure a Message center email notification.
- D. From the Microsoft 365 Defender portal create an alert policy and configure an email notification.

Answer: C

NEW QUESTION 206

- (Exam Topic 5)

Please wait while the virtual machine loads. Once loaded, you may proceed to the lab section. This may take a few minutes, and the wait time will not be deducted from your overall test time.

When the Next button is available, click it to access the lab section. In this section, you will perform a set of tasks in a live environment. While most functionality will be available to you as it would be in a live environment, some functionality (e.g., copy and paste, ability to navigate to external websites) will not be possible by design.

Scoring is based on the outcome of performing the tasks stated in the lab. In other words, it doesn't matter how you accomplish the task, if you successfully perform it, you will earn credit for that task.

Labs are not timed separately, and this exam may have more than one lab that you must complete. You can use as much time as you would like to complete each lab. But, you should manage your time appropriately to ensure that you are able to complete the lab(s) and all other sections of the exam in the time provided.

Please note that once you submit your work by clicking the Next button within a lab, you will NOT be able to return to the lab.

You may now click next to proceed to the lab. Lab information

Use the following login credentials as needed:

To enter your username, place your cursor in the Sign in box and click on the username below.

To enter your password, place your cursor in the Enter password box and click on the password below.

Microsoft 365 Username: admin@M365x981607.onmicrosoft.com Microsoft 365 Password: *yfLo7lr2&yIf the Microsoft 365 portal does not load successfully in the browser, press CTRL-K to reload the portal in a new browser tab.

The following information is for technical support purposes only:

Lab Instance: 10811525

You plan to provide several users in your organization with the ability to join their Windows 10 device to Microsoft Azure Active Directory (Azure AD).

You need to ensure that all the users who join a device use multi-factor authentication.

- A. Mastered
- B. Not Mastered

Answer: A

Explanation:

You need to configure the device settings in Azure Active Directory.

- * 1. Go to the Azure Active Directory admin center.
- * 2. Select Azure Active Directory.
- * 3. Select Devices.
- * 4. Select Device Settings.
- * 5. Toggle the 'Require Multi-Factor Auth to join devices' setting to Yes.
- * 6. Click Save to save the changes. References:

<https://docs.microsoft.com/en-us/azure/active-directory/devices/device-management-azure-portal>

NEW QUESTION 207

- (Exam Topic 5)
You have a Microsoft 365 subscription and a hybrid Microsoft Exchange Online deployment.
You plan to deploy iOS devices that will use Outlook for iOS and Hybrid Modern Authentication (HMA). You need to ensure that HMA is configured correctly.
What should you use?

- A. Microsoft Diagnostics and Recovery Toolset (DaRT)
- B. Microsoft Remote Connectivity Analyzer
- C. Microsoft Support and Recovery Assistant
- D. Apple Configurator

Answer: D

NEW QUESTION 210

- (Exam Topic 5)
You have a Microsoft 365 tenant that contains Microsoft Exchange Online.
You plan to enable calendar sharing with a partner organization named adatum.com. The partner organization also has a Microsoft 365 tenant.
You need to ensure that the calendar of every user is available to the users in adatum.com immediately. What should you do?

- A. From the Exchange admin center, create a sharing policy.
- B. From the Exchange admin center, create a new organization relationship
- C. From the Microsoft 365 admin center, modify the Organization profile settings.
- D. From the Microsoft 365 admin center, configure external site sharing.

Answer: B

Explanation:

You need to set up an organization relationship to share calendar information with an external business partner. Office 365 admins can set up an organization relationship with another Office 365 organization or with an Exchange on-premises organization.
Reference:
<https://docs.microsoft.com/en-us/exchange/sharing/organization-relationships/create-an-organization-relationshi>

NEW QUESTION 213

- (Exam Topic 5)
You have retention policies in Microsoft 365 as shown in the following table.

Name	Location
Policy1	OneDrive accounts
Policy2	Exchange email, Exchange public folders, Office 365 groups, OneDrive accounts, SharePoint sites

Policy1 is configured as shown in the Policy1 exhibit. (Click the Policy1 tab.)
Policy1

Decide if you want to retain content, delete it, or both

Do you want to retain content? ⓘ

☐ Yes, I want to retain it ⓘ

For this long... 7 years

☒ No, just delete content that's older than ⓘ

1 years

Delete the content based on when it was created ⓘ

Need more options?

☐ Use advanced retention settings ⓘ

Back

Next

Cancel

Policy1 is configured as shown in the Policy2 exhibit. (Click the Policy2 tab.)
Policy2

Decide if you want to retain content, delete it, or both

Do you want to retain content? ⓘ

☒ Yes, I want to retain it ⓘ

For this long... 4 years

Retain the content based on when it was created ⓘ

Do you want us to delete it after this time? ⓘ

☐ Yes ☒ No

☐ No, just delete content that's older than ⓘ

2 years

Need more options?

☐ Use advanced retention settings ⓘ

Back

Next

Cancel

For each of the following statements, select Yes if the statement is true. Otherwise, select No.
NOTE: Each correct selection is worth one point.

Statements

Yes

No

If a user creates a file in Microsoft OneDrive on January 1, 2018, users will be able to access the file on January 15, 2020

☐

☐

If a user deletes a Microsoft OneDrive file that was created on January 1, 2018, and administrator will be able to recover the file on April 15, 2020.

☐

☐

If a user deletes a Microsoft OneDrive file that was created on January 1, 2018, an administrator will be able to recover the file on April 15, 2023.

☐

☐

- A. Mastered
- B. Not Mastered

Answer: A

Explanation:

> Retention wins over deletion. Suppose that one retention policy says to delete Exchange email after three years, but another retention policy says to retain Exchange email for five years and then delete it. Any content that reaches three years old will be deleted and hidden from the users' view, but still retained in the Recoverable Items folder until the content reaches five years old, when it is permanently deleted.

> The longest retention period wins. If content is subject to multiple policies that retain content, it will be retained until the end of the longest retention period.

Box 1: No.
The file will be deleted and hidden from the users' view, but still retained in the Recoverable Items folder. An administrator would need to recover the file.

Box 2: Yes.
The file will be deleted and hidden from the users' view, but still retained in the Recoverable Items folder. An administrator will be able to recover the file.

Box 3: Yes.
2018 to 2023 is five years. Policy2 has a retention period of four years. However, Policy2 is configured to not delete the files after the four-year retention period.

Reference:
<https://docs.microsoft.com/en-us/office365/securitycompliance/retention-policies#the-principles-of-retention-or>

NEW QUESTION 214

- (Exam Topic 5)
You are developing a Microsoft Teams tab that will capture coordinates from mobile devices and send notifications to users. The relevant portion of the app manifest is shown in the App Manifest exhibit (Click the App Manifest tab.) The relevant portion of the JavaScript code for the tab is shown in the JavaScript exhibit (Click the JavaScript tab)
While testing the tab, a user receives the message shown in the Message exhibit (Click the Message tab.) For each of the following statements, select Yes if the statement is true. Otherwise, select No.
NOTE; Each correct selection is worth one point.

Answer Area	
Statements	
If the user changes mobile devices after successfully using all the functionalities in the tab, the user will receive the message again.	<div><div>Yes</div><div>No</div></div>
If the user uses two different tenants on the same mobile device, the user will receive the message again.	<div><div>Yes</div><div>No</div></div>
If two users share the same mobile device, each user will receive the message when the user first uses the tab.	<div><div>Yes</div><div>No</div></div>

- A. Mastered
- B. Not Mastered

Answer: A

Explanation:

Answer Area	
Statements	
If the user changes mobile devices after successfully using all the functionalities in the tab, the user will receive the message again.	<div><div>Yes</div><div>No</div></div>
If the user uses two different tenants on the same mobile device, the user will receive the message again.	<div><div>Yes</div><div>No</div></div>
If two users share the same mobile device, each user will receive the message when the user first uses the tab.	<div><div>Yes</div><div>No</div></div>

NEW QUESTION 219

- (Exam Topic 5)
Please wait while the virtual machine loads. Once loaded, you may proceed to the lab section. This may take a few minutes, and the wait time will not be deducted from your overall test time.
When the Next button is available, click it to access the lab section. In this section, you will perform a set of tasks in a live environment. While most functionality will be available to you as it would be in a live environment, some functionality (e.g., copy and paste, ability to navigate to external websites) will not be possible by design.
Scoring is based on the outcome of performing the tasks stated in the lab. In other words, it doesn't matter how you accomplish the task, if you successfully perform it, you will earn credit for that task.
Labs are not timed separately, and this exam may have more than one lab that you must complete. You can use as much time as you would like to complete each lab. But, you should manage your time appropriately to ensure that you are able to complete the lab(s) and all other sections of the exam in the time provided.

Please note that once you submit your work by clicking the Next button within a lab, you will NOT be able to return to the lab.
You may now click next to proceed to the lab. Lab information
Use the following login credentials as needed:
To enter your username, place your cursor in the Sign in box and click on the username below.
To enter your password, place your cursor in the Enter password box and click on the password below.
Microsoft 365 Username: admin@LODSe426243.onmicrosoft.com Microsoft 365 Password: 3&YWYjse-6-d
If the Microsoft 365 portal does not load successfully in the browser, press CTRL-K to reload the portal in a new browser tab.
The following information is for technical support purposes only:
Lab Instance: 10887751
You plan to allow the users in your organization to invite external users as guest users to your Microsoft 365 tenant.
You need to prevent the organization's users from inviting guests who have an email address that uses a suffix of @gmail.com.

- A. Mastered
- B. Not Mastered

Answer: A

Explanation:

You need to add gmail.com as a denied domain in the 'External collaboration settings'.

- * 1. Go to the Azure Active Directory admin center.
- * 2. Select Users then select 'User settings'.
- * 3. Under External Users, select the 'Manage external collaboration settings'.
- * 4. Under 'Collaboration restrictions', select the 'Deny invitations to the specified domains' option.
- * 5. Under, Target Domains, type in the domain name 'gmail.com'
- * 6. Click the Save button at the top of the screen to save your changes. References:
<https://docs.microsoft.com/en-us/azure/active-directory/b2b/allow-deny-list>

NEW QUESTION 224

- (Exam Topic 5)

Please wait while the virtual machine loads. Once loaded, you may proceed to the lab section. This may take a few minutes, and the wait time will not be deducted from your overall test time.

When the Next button is available, click it to access the lab section. In this section, you will perform a set of tasks in a live environment. While most functionality will be available to you as it would be in a live environment, some functionality (e.g., copy and paste, ability to navigate to external websites) will not be possible by design.

Scoring is based on the outcome of performing the tasks stated in the lab. In other words, it doesn't matter how you accomplish the task, if you successfully perform it, you will earn credit for that task.

Labs are not timed separately, and this exam may have more than one lab that you must complete. You can use as much time as you would like to complete each lab. But, you should manage your time appropriately to ensure that you are able to complete the lab(s) and all other sections of the exam in the time provided.

Please note that once you submit your work by clicking the Next button within a lab, you will NOT be able to return to the lab.

You may now click next to proceed to the lab. Lab information

Use the following login credentials as needed:

To enter your username, place your cursor in the Sign in box and click on the username below.

To enter your password, place your cursor in the Enter password box and click on the password below.

Microsoft 365 Username: admin@LODSe878763.onmicrosoft.com

Microsoft 365 Password: m3t^We\$Z7&xy

If the Microsoft 365 portal does not load successfully in the browser, press CTRL-K to reload the portal in a new browser tab.

The following information is for technical support purposes only:

Lab Instance: 11440873



Sign in

No account? [Create one!](#)

[Can't access your account?](#)

[Sign-in options](#)

Next

You need to add Adele Vance to a group named Managers. The solution must ensure that you can grant permissions to Managers.
To answer, sign in to the Microsoft 365 portal.

- A. Mastered
- B. Not Mastered

Answer: A

Explanation:

You need to create a group named Managers and add Adele Vance to the group. To ensure that you can grant permissions to the Managers group, the group needs to be a Security Group.

- * 1. Sign in to the Microsoft 365 Admin Center.
- * 2. In the left navigation pane, expand the Groups section then select Groups.
- * 3. Click the 'Add a group' link.
- * 4. For the group type, select Security and click Next.
- * 5. Enter 'Managers' in the Name field and click Next.
- * 6. Click the 'Create Group' button to create the Managers group.
- * 7. In the list of groups, select the Managers group.
- * 8. Click the Members link.
- * 9. Click the 'View all and manage members link'.
- * 10. Click the 'Add Members' button.
- * 11. Select Adele Vance and click the Save button.
- * 12. Click the Close button to close the group page.

NEW QUESTION 225

- (Exam Topic 5)

Your organization has an on-premises Microsoft Exchange Server 2016 organization. The organization is in the company's main office in Melbourne. The main office has a low-bandwidth connection to the Internet.

The organization contains 250 mailboxes.

You purchase a Microsoft 365 subscription and plan to migrate to Exchange Online next month. In 12 months, you plan to increase the bandwidth available for the Internet connection.

You need to recommend the best migration strategy for the organization. The solution must minimize administrative effort.

What is the best recommendation to achieve the goal? More than one answer choice may achieve the goal. Select the BEST answer.

- A. network upload
- B. cutover migration
- C. hybrid migration
- D. staged migration

Answer: C

Explanation:

With a hybrid migration, you can migrate the mailboxes in small batches over a period of time which will help to avoid saturating the bandwidth. With the migration wizard, you can configure a migration batch to start outside office hours which would minimize bandwidth usage during office hours.

With a hybrid migration, you do not need to reconfigure Outlook to connect to the migrated mailbox. Outlook will automatically detect the new mailbox location. This reduces administrative effort.

Reference:

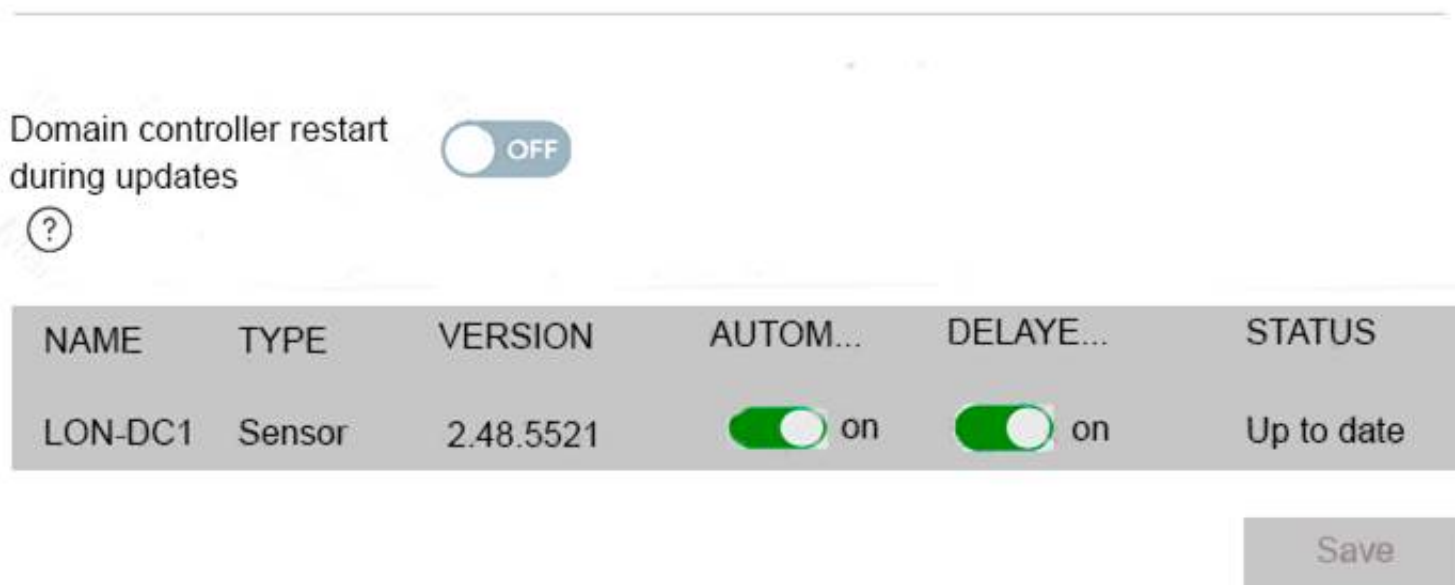
<https://docs.microsoft.com/en-us/exchange/mailbox-migration/mailbox-migration>

NEW QUESTION 228

- (Exam Topic 5)

You implement Microsoft Azure Advanced Threat Protection (Azure ATP). You have an Azure ATP sensor configured as shown in the following exhibit. Updates

Updates



NAME	TYPE	VERSION	AUTOM...	DELAYE...	STATUS
LON-DC1	Sensor	2.48.5521	on	on	Up to date

Save

How long after the Azure ATP cloud service is updated will the sensor update?

- A. 1 hour
- B. 7 days
- C. 48 hours
- D. 12 hours
- E. 72 hours

Answer: E

Explanation:

References:

<https://docs.microsoft.com/en-us/azure-advanced-threat-protection/atp-whats-new> The exhibit shows that the sensor is configure for Delayed update.

Given the rapid speed of ongoing Azure ATP development and release updates, you may decide to define a subset group of your sensors as a delayed update ring, allowing for a gradual sensor update process. Azure

ATP enables you to choose how your sensors are updated and set each sensor as a Delayed update candidate.

Sensors not selected for delayed update are updated automatically, each time the Azure ATP service is

updated. Sensors set to Delayed update
each service update.
Reference:
are updated on a delay of 72 hours, following the official release of
<https://docs.microsoft.com/en-us/azure-advanced-threat-protection/sensor-update>

NEW QUESTION 232

- (Exam Topic 5)
You have a Microsoft 365 subscription that contains a guest user named User1. User1 is assigned the User administrator role.
You have a Microsoft Azure Active Directory (Azure AD) tenant named contoso.com. Contoso.com is configured as shown in the following exhibit.

External collaboration settings

Save

Discard

Guest users permissions are limited

Yes

No

Admins and users in the guest inviter role can invite

Yes

No

Members can invite

Yes

No

Guests can invite

Yes

No

Collaboration restrictions

☒

Allow invitations to be sent to any domain (most inclusive)

☐

Deny invitations to the specified domains

☐

Allow invitations only to the specified domains (most restrictive)

Use the drop-down menus to select the answer choice that completes each statement based on the information presented in the graphic.
NOTE: Each correct selection is worth one point.

User1 can [answer choice]

open the Azure portal only

open the Azure portal and view users only

open the Azure portal, view users, and create new guest users only

open the Azure portal, view users, create new users, and create new guest users

All other guest users can [answer choice]

open the Azure portal only

open the Azure portal and view users only

open the Azure portal, view users, and create new guest users only

open the Azure portal, view users, create new users, and create new guest users

- A. Mastered
- B. Not Mastered

Answer: A

Explanation:

Default permissions for guests are restrictive by default. Guests can be added to administrator roles, which grant them full read and write permissions contained in the role. There is one additional restriction available, the ability for guests to invite other guests. Setting Guests can invite to No prevents guests from inviting other guests.
User1 is assigned the User Administrator role. Therefore, User1 can open the Azure portal, view users, create new users, and create new guest users.
In the exhibit, the 'Guest user permissions are limited' is set to no. This means that guest users have the same permissions as members. However, the 'Guests can invite' setting is set to No. Therefore, other guest users (all guest users except User1) can open the Azure portal and view users in the same way as member users can.
Reference:
<https://docs.microsoft.com/en-us/azure/active-directory/b2b/delegate-invitations> <https://docs.microsoft.com/en-us/azure/active-directory/fundamentals/users-default-permissions>

NEW QUESTION 234

.....

Thank You for Trying Our Product

We offer two products:

1st - We have Practice Tests Software with Actual Exam Questions

2nd - Questions and Answers in PDF Format

MS-100 Practice Exam Features:

- * MS-100 Questions and Answers Updated Frequently
- * MS-100 Practice Questions Verified by Expert Senior Certified Staff
- * MS-100 Most Realistic Questions that Guarantee you a Pass on Your FirstTry
- * MS-100 Practice Test Questions in Multiple Choice Formats and Updatesfor 1 Year

100% Actual & Verified — Instant Download, Please Click
[Order The MS-100 Practice Test Here](#)