

Exam Questions 200-901

Developing Applications and Automating Workflows using Cisco Core Platforms (DEVASC)

<https://www.2passeasy.com/dumps/200-901/>



NEW QUESTION 1

Which REST architectural constraint indicates that no client context should be stored on the server between requests?

- A. stateless
- B. uniform interface
- C. cacheable
- D. client-server

Answer: A

NEW QUESTION 2

Refer to the exhibit.

```
curl -X GET -H "Accept: application/json" \
-H "Authorization: Bearer AbCdEf123456" https://localhost/api/myresource
```

A process on the host wants to access the service running inside this Docker container. Which port is used to make a connection?

- A. only outbound connections between 3000 and 5000 are possible
- B. port 3000
- C. any port between 3000 and 5000
- D. port 5000

Answer: B

NEW QUESTION 3

Which product provides network controller-level management features?

- A. Cisco DNA Center
- B. Cisco NX-OS
- C. Cisco UCS Manager
- D. Cisco ISE

Answer: A

NEW QUESTION 4

Which statement about authentication a RESTCONF API session with a router that runs Cisco IOS XE software is true?

- A. OAuth must be used.
- B. A token must be retrieved and the associated string must be embedded in the X-Auth-Token header.
- C. Basic authentication must be used.
- D. No authentication is required.

Answer: C

NEW QUESTION 5

What is the outcome of executing this command?

```
git clone ssh://john@exmaple.com/path/to/my-project_git
```

- A. Creates a local copy of a repository called "my project"
- B. Creates a copy of a branch called "my project"
- C. Initiates a new Git repository called "my project"
- D. Creates a new branch called "my project"

Answer: A

NEW QUESTION 6

Drag and drop the network automation interfaces from the left onto the transport protocols that they support on the right.

SSH	gRPC
HTTP	NETCONF
HTTP/2	RESTCONF
HTTPS	

- A. Mastered
- B. Not Mastered

Answer: A

Explanation:

gRPC = C, NETCONF = A, RESTCONF = B, D

NEW QUESTION 7

Refer to the exhibit.

```
A. [ {  
    "books": {  
        "science": {  
            "biology": "10.00",  
            "geology": "9.00",  
            "chemistry": "8.00"  
        },  
        "math": {  
            "calculus": "20.00",  
            "algebra": "12.00"  
        }  
    }  
}]  
  
B. {  
    "books": [  
        "science": {  
            "biology": "10.00",  
            "geology": "9.00",  
            "chemistry": "8.00"  
        },  
        "math": {  
            "calculus": "20.00",  
            "algebra": "12.00"  
        }  
    ]  
}
```

Which python data structure does my_json contain?

- A. List
- B. Json
- C. Map
- D. Dict

Answer: D

NEW QUESTION 8

Refer to the exhibit.

URL: https://<ASA_IP>/api/access/global/rules

Method: POST

Payload:

```

{
  "destinationAddress": {
    "kind": "IPv4Address",
    "value": "10.1.1.1"
  },
  "remarks": [ ],
  "active": true
  "permit": true,
  "sourceAddress": {
    "kind": "IPv4Address",
    "value": "192.168.1.1"
  }
}

```

Response Status Code: 400 Bad Request

```

{"messages":[{"level":"Error","code":"JSON-PARSE-ERROR","details":"
Unexpected character ('\'' (code 34)):"

```

What caused the error in this API request?

- A. The API resource does not support the POST operation
- B. The API resource does not support JSON format payloads.
- C. The submitted JSON payload includes a field that is not supported by the API resource.
- D. The submitted JSON payload has a formatting issue

Answer: D

NEW QUESTION 9

Which platform has an API that be used to obtain a list of vulnerable software on user devices?

- A. Cisco Umbrella
- B. Cisco Firepower
- C. Cisco Identity Services Engine
- D. Cisco Advanced Malware Protection

Answer: D

NEW QUESTION 10

When using the Bash shell, how it the output of the devnet command saved to a tile named "output.txt"?

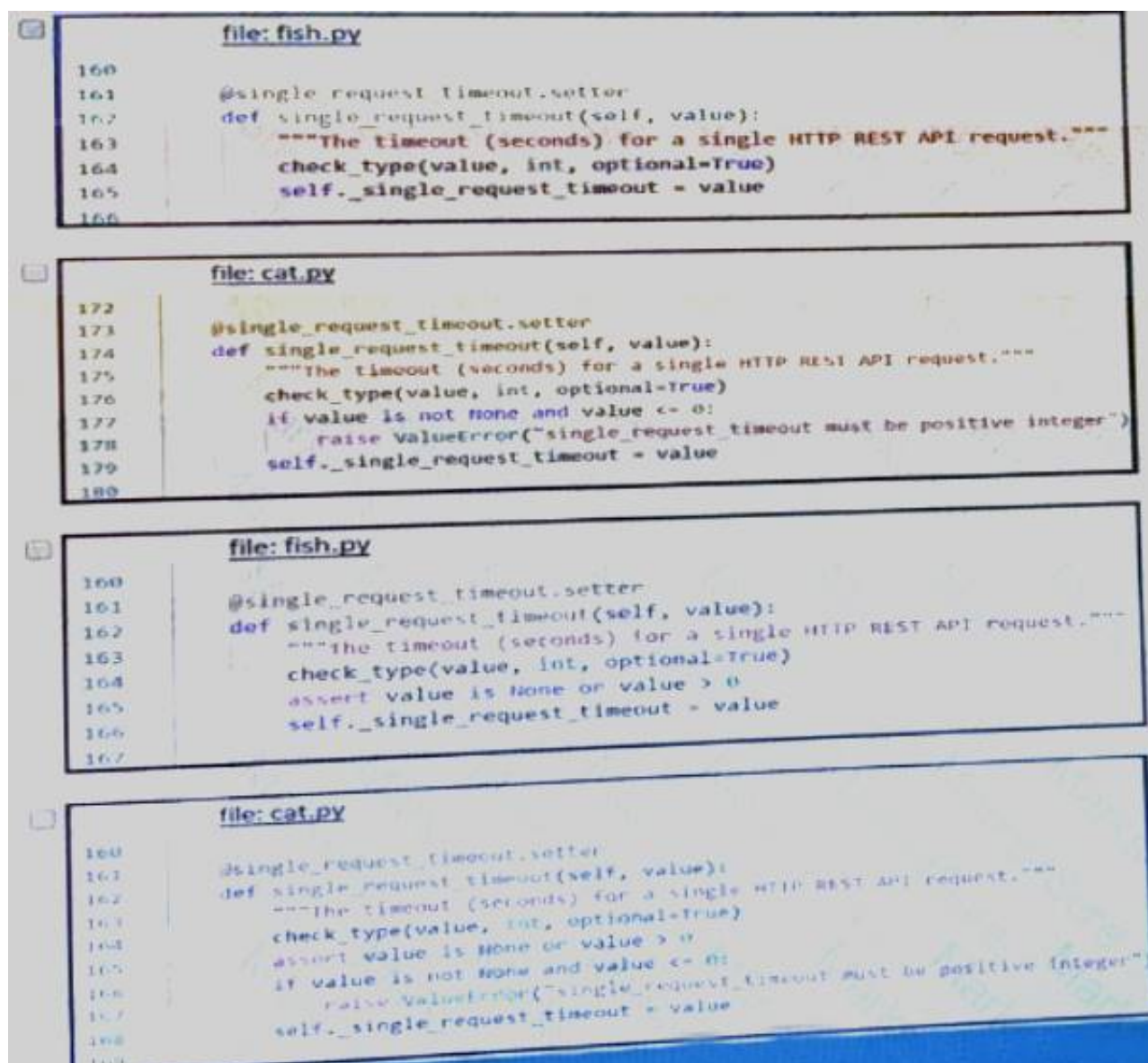
- A. devnet & output.txt
- B. devnet > output.txt
- C. devnet < output.txt
- D. devnet | output.txt

Answer: B

NEW QUESTION 10

Fill in the blanks to complete the statement.

Cisco DNA provide the capability to send an HTTP _____ request to the API endpoint https://DNA-c_API_ADDRESS/api/vi/network-device/ and receive the network _____list in _____ format.



- A. Mastered
- B. Not Mastered

Answer: A

Explanation:

Solution below as

Refer to the exhibit. The output of a unified diff when comparing two versions of a Python script is shown. Which two "single_request_timeout()" functions are defined in fish.py and cat.py, where the left column indicates the line numbers of the fish.py and cat.py code listings? (Choose two.)

Line File: cat.py

```

173 @single_request_timeout.setter
174 def single_request_timeout(self, value):
175     """The timeout (seconds) for a single HTTP REST API request."""
176     check_type(value, int, optional=True)
177     if value is not None and value <= 0:
178         raise ValueError("timeout value must be positive int")
179     self.single_request_timeout = value
180

```

A

Line File: cat.py

```

160 @single_request_timeout.setter
161 def single_request_timeout(self, value):
162     """The timeout (seconds) for a single HTTP REST API request."""
163     check_type(value, int, optional=True)
164     if value is not None and value <= 0:
165         raise ValueError("timeout value must be positive int")
166     self.single_request_timeout = value
167

```

B

Line File: fish.py

```

160 @single_request_timeout.setter
161 def single_request_timeout(self, value):
162     """The timeout (seconds) for a single HTTP REST API request."""
163     check_type(value, int, optional=True)
164     self.single_request_timeout = value
165

```

C

NEW QUESTION 15

Which CI/CD tool is an automation tool used to build, test, and deploy software?

- A. Nagios
- B. Gradle
- C. Jenkins

D. Git

Answer: C

NEW QUESTION 19

Which status code is used by a REST API to indicate that the submitted payload is incorrect?

A. A.-400B.403C.405D.429

Answer: A

NEW QUESTION 24

Refer to the exhibit.

```
>>> from cli import *
>>> import json

>>>
>>> cli('configure terminal ; interface loopback 5 ; no shut')
''
>>> intflist=json.loads(clid('show interface brief'))
>>> i=0
>>> while i < len (intflist['TABLE_interface']['ROW_interface']):
...     intf=intflist['TABLE_interface']['ROW_interface'][i]
...     i=i+1
...     if intf['state'] == 'up':
...         print intf['interface']
```

What caused the error in this API request?

- A. The API resource does not support the POST operation.
- B. The API resource does not support JSON format payloads.
- C. The submitted JSON payload includes a field that is not supported by the API resources.
- D. The submitted JSON payload has a formatting issue.

Answer: D

NEW QUESTION 29

Which two statements are true about Cisco UCS manager, Cisco Intersight APIs? (Choose two.)

- A. Cisco Intersight API interactions can be encoded in XML or JSON and require an APIs key in the HTTP header for authentication.
- B. USC Director API interactions can be XML- or JSON-encoded and require an APLs key in the HTTP header for authentication.
- C. UCS manager API interactions are XML-encoded and require a cookie in the method for authentication.
- D. Cisco Intersight uses XML to encoded API interactions and requires an API key pair for authentication.
- E. UCS manager uses JSON to encode API interactions and utilizes Base64-encoded credentials in the HTTP header for authentication.

Answer: BC

NEW QUESTION 33

Which line is an example of the start of a chunk from a unified diff?

- A. @@ -90,88 +20191008T1349@@
- B. @@ -20191007T1200 +88,90 @@
- C. @@ -20191007T1200 +20191008T1349@@
- D. @@ -88,10 +88,6 @@

Answer: D

NEW QUESTION 36

Which PAI is used to obtain data voicemail ports?

- A. Finesse gadgets
- B. Cisco Unified Communications manager
- C. Webex devices
- D. Webex teams

Answer: B

NEW QUESTION 37

Refer to the exhibit.

List Rooms

List rooms.

The `title` of the room for 1:1 rooms will be the display name of the other person.

By default, lists rooms to which the authenticated user belongs.

Long result sets will be split into [pages](#).

GET `/v1/rooms`

Query Parameters



Name	Description
<code>teamId</code> string	List rooms associated with a team, by ID.
<code>type</code> string	List rooms by type. <i>Possible values: direct, group</i>
<code>sortBy</code> string	Sort results. <i>Possible values: id, lastactivity, created</i>
<code>max</code> number	Limit the maximum number of rooms in the response. Default: <code>100</code>

Given the API documentation for the UCS SDK python class, `UcsHandle`, which code snippet creates a handle instance?

`HTTP GET /v1/rooms`

- A. Option A
- B. Option B
- C. Option C
- D. Option D

Answer: B

NEW QUESTION 42

Which two statements describe the role of an artifact repository in a CI/CD pipeline? (Choose two.)

- A. An artifact repository allows to compare and merge changes in the source code of files involved in a build process.
- B. An artifact repository is needed only for CI/CD pipeline executed on a public cloud infrastructure.
- C. An artifact repository provides traceability, search, and management of binary files.
- D. An artifact repository is needed only for managing open source software.
- E. An artifact repository stores files needed and generated during the build process.

Answer: CE

NEW QUESTION 45

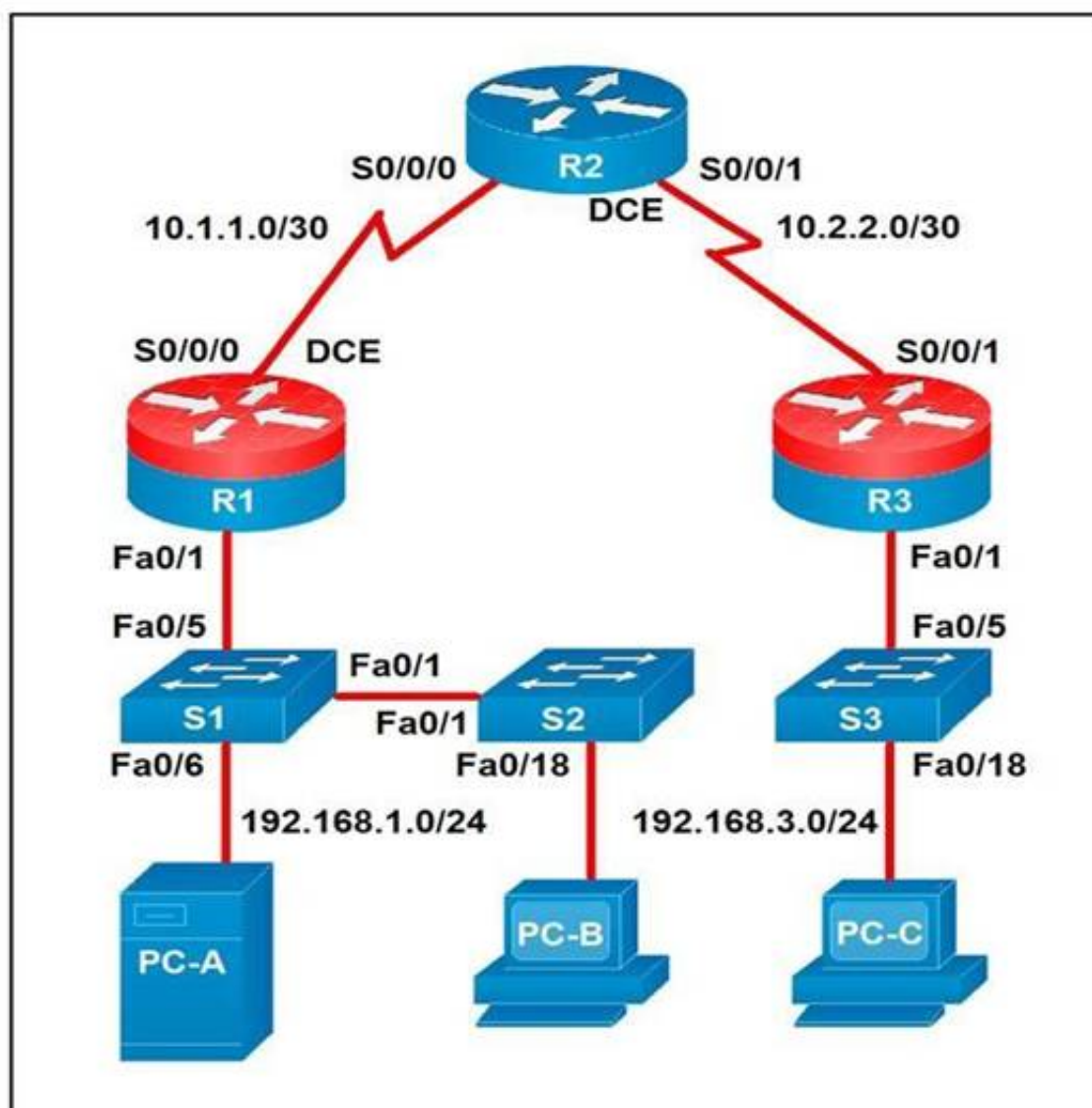
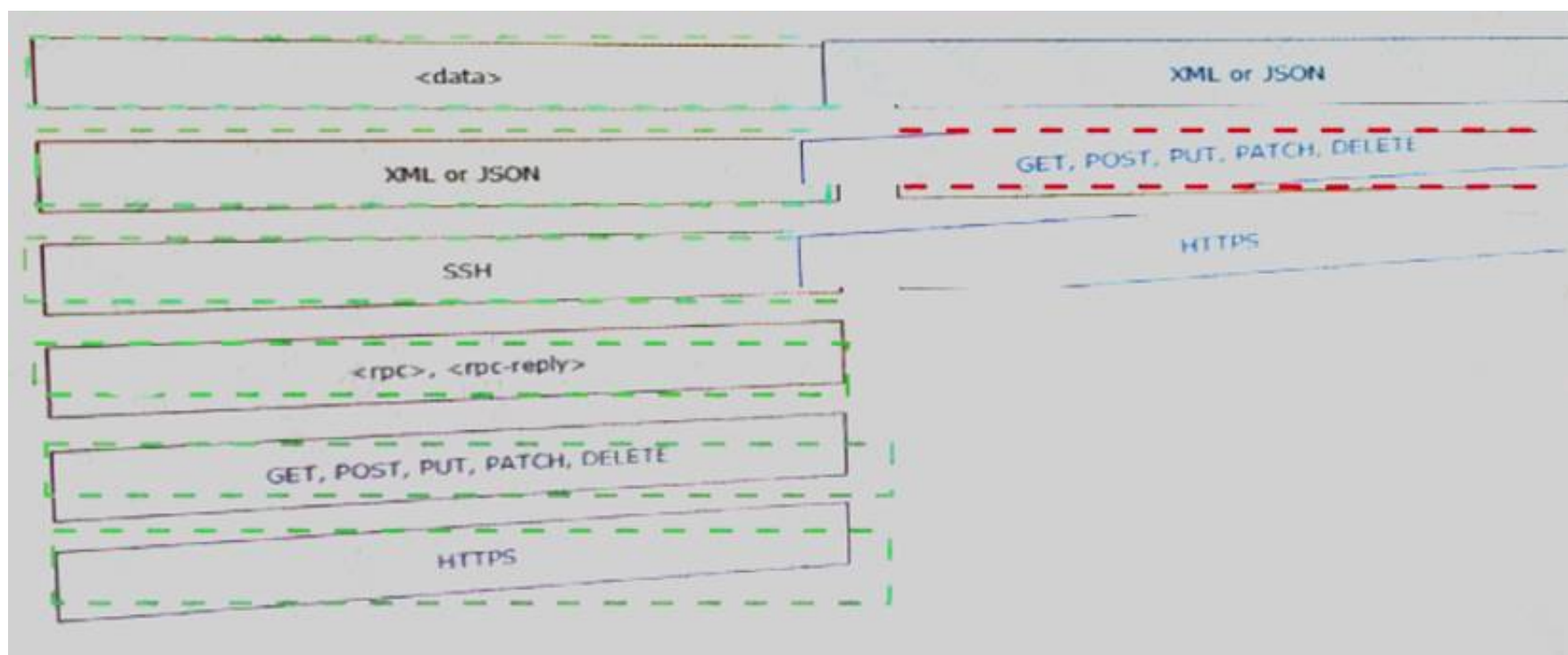
What are two characteristics of Bare Metal environments that are related to application deployment? (Choose two.)

- A. Provide the hypervisor to host virtual servers
- B. Specifically designed for container-based workloads.
- C. Provides workloads with access to hardware features
- D. Suitable for legacy application that do not support virtualization
- E. Not compatible with other cloud services such as PaaS or SaaS offerings.

Answer: CD

NEW QUESTION 48

Refer to the exhibit.



A developer is troubleshooting an API with the given API with the given API documentation and cURL command. What is the cause of this problem?

- A. The user is not allowed to post messages from their account
- B. The request body is missing or incomplete
- C. The API token specified is expired
- D. The authorization header is missing or incomplete

Answer: C

NEW QUESTION 53

Drag and drop elements of the RESTCONF protocol stack from the left onto the correct description on the right. Not all elements on the left are used.

```
List the networks in a Meraki organization:

GET https://api.meraki.com/api/v0/organizations/<org_id>/networks
Response code: 200
Response body: [ {
  "id": <network_id>,
  "name": "Test Network",
  "organization_id": <new_org_id>,
  "type": "wireless",
  "timeZone": "America/Los_Angeles",
  "tags": " test "
}
```


- A. Mastered
- B. Not Mastered

Answer: A

Explanation:

1 – B, 2 – E, 3 - F

NEW QUESTION 55

Which two statements describe the advantages of using a version control system? (Choose two.)

- A. It allows for branching and merging so that different tasks are worked on in isolation before they are merged into a feature or master branch.
- B. It allows multiple engineers to work against the same code and configuration files and manage differences and conflicts.
- C. It provides tooling to automate application builds and infrastructure provisioning.
- D. It allows developers to write effective unit tests.
- E. It provides a system to track User Stories and allocate to backlogs.

Answer: AB

NEW QUESTION 59

Refer to the exhibit.



Given the API documentation for the UCS SDK python class, UcsHandle, which code snippet creates a handle instance?

```
---
- hosts: switch2960cx
  gather_facts: no

  tasks:
    - ios_l2_interface:
      name: GigabitEthernet0/1
      state: unconfigured

    - ios_l2_interface:
      name: GigabitEthernet0/1
      mode: trunk
      native_vlan: 1
      trunk_allowed_vlans: 6-8
      state: present

    - ios_vlan:
      vlan_id: 6
      name: guest-vlan
      interfaces:
        - GigabitEthernet0/2
        - GigabitEthernet0/3

    - ios_vlan:
      vlan_id: 7
      name: corporate-vlan
      interfaces:
        - GigabitEthernet0/4

    - ios_vlan:
      vlan_id: 8
      name: iot-vlan
      interfaces:
        - GigabitEthernet0/5
```

- A. Option A
- B. Option B
- C. Option C
- D. Option D

Answer: B

NEW QUESTION 64

Which task is performed because the test-driven development approach is being used?

- A. testing existing software before developing new code
- B. refactoring code that is covered by existing tests
- C. writing code without committing any coding violations
- D. creating test scenarios based on continuous development

Answer: B

NEW QUESTION 66

Refer to the exhibit.

URL: https://<ASA_IP>/api/access/global/rules

Method: POST

Payload:

```

{
  "destinationAddress": {
    "kind": "IPv4Address",
    "value": "10.1.1.1"
  },
  "remarks": [ ],
  "active": true,
  "permit": true,
  "sourceAddress": {
    "kind": "IPv4Address",
    "value": "192.168.1.1"
  }
}

```

Response Status Code: 400 Bad Request

```

{"messages":[{"level":"Error","code":"JSON-PARSE-ERROR","details":"
Unexpected character ('\'' (code 34)):"

```

What is the function of the python script?

- A. Count and print the total number of available devices.
- B. Iterate over a list of network devices and write all device names and management IP addresses to an output file.
- C. Iterate over a list of network devices and write all device type and associated management IP address.
- D. For each device that is returned, display the device and, for each device, print the device name and management IP address.
- E. Loop through the returned list of network devices and, for each device, print the device name management IP address.

Answer: E

NEW QUESTION 70

Which principle is a value from the manifesto for Agile software development?

- A. adhering to a plan over responding to requirements
- B. detailed documentation over working software
- C. processes and tools over teams and inter actions
- D. customer collaboration over contract negotiation

Answer: D

NEW QUESTION 73

Drag and drop the element of the Finesse API on the left onto the description of its functionality on the right.

```
module ex-ethernet {
    namespace "http://example.com/Ethernet";
    prefix "eth";
    import ietf-interfaces {
        prefix if;
    }
    augment "/if:interfaces/if:interface" {
        when "if:type = 'ethernetCsmacd'";
        container ethernet {
            must "../if:location" {
                description
                    "An Ethernet interface must specify the physical location of the ethernet hardware.";
            }
            choice transmission-params {
                case auto {
                    leaf auto-negotiate {
                        type empty;
                    }
                }
                case manual {
                    leaf duplex {
                        type enumeration {
                            enum "half";
                            enum "full";
                        }
                    }
                    leaf speed {
                        type enumeration {
                            enum "10Mb";
                            enum "100Mb";
                            enum "1Gb";
                            enum "10Gb";
                        }
                    }
                }
            }
        }
    }
    // other ethernet specific params...
}
```

- A. Mastered
 B. Not Mastered

Answer: A

Explanation:

1 – D, 2 – F, 3 – A, 4 – E, 5 – B, 6 – G, 7 - C

NEW QUESTION 78

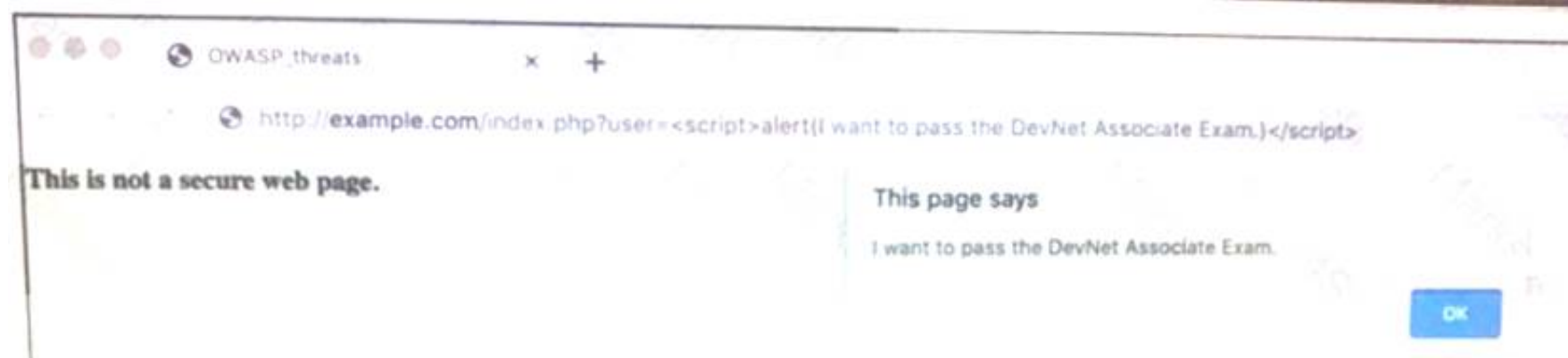
Which action does the Git command git merge allow the development to perform?

- A. Combine multiple sequence of commits into one unified history.
 B. Push changes to the remote repository
 C. Switch between branches
 D. Create, list, rename, and delete branches

Answer: A

NEW QUESTION 82

Fill in the blanks to complete the cURL command that invokes a RESTful API to retrieve a resource in JSON format using OAuth.



curl -X _____ -H " _____: application/json" \
 -H " _____: Bearer AbCdEf123456" https://localhost/api/myresource

- A. Mastered
 B. Not Mastered

Answer: A

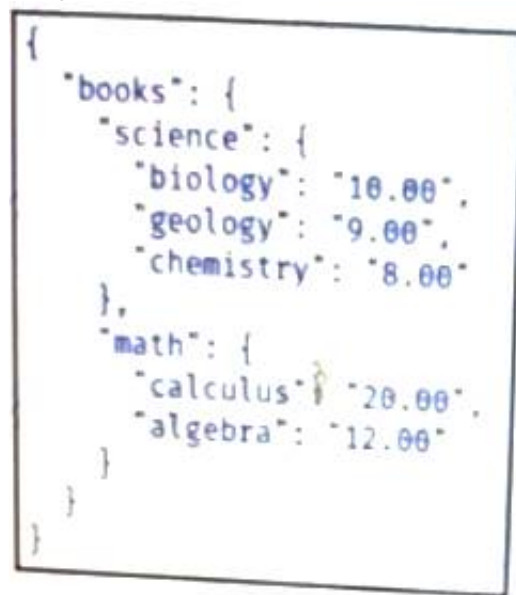
Explanation:

See the solution below.

```
<books>
  <science>
    <biology>10.00</biology>
    <geology>9.00</geology>
    <chemistry>8.00</chemistry>
  </science>
  <math>
    <calculus>20.00</calculus>
    <algebra>12.00</algebra>
  </math>
</books>
```

NEW QUESTION 86

Drag and drop the descriptions from the left onto correct application deployment models on the right.



- A. Mastered
- B. Not Mastered

Answer: A

Explanation:

1 – B, 2 – E, 3 – C, 4 – D, 5 – A

NEW QUESTION 88

Which mechanism is used to consume a RESTful API design when large amounts of data are returned?

- A. Data sets
- B. Scrolling
- C. Blobs
- D. Pagination

Answer: D

NEW QUESTION 93

What is the benefit of edge computing?

- A. It reduces network latency by moving processing closer to the data source.
- B. It simplifies security as devices and processing are brought closer together
- C. It removes the need for centralized data processing.
- D. It reduces data velocity from devices or other data sources.

Answer: A

NEW QUESTION 94

What are two advantages of the Model-view-controller software design pattern? (Choose two.)

- A. simplifies network automation
- B. allows for multiple views of the same model
- C. makes code easier to deploy using CI/CD pipelines
- D. reduces need for error handling
- E. separates responsibilities of the code, which makes future modifications easier

Answer: BE

NEW QUESTION 99

What are two security benefits of a Docker-based application?

- A. easier to patch because Docker containers include only dependencies that the application requires
- B. prevents information leakage that can occur when unhandled exceptions are returned in HTTP responses
- C. allows for separation of application that traditionally run in the same host
- D. natively secures access to secrets that are used by the running application
- E. guarantees container images are secured and free of vulnerabilities

Answer: AC

NEW QUESTION 100

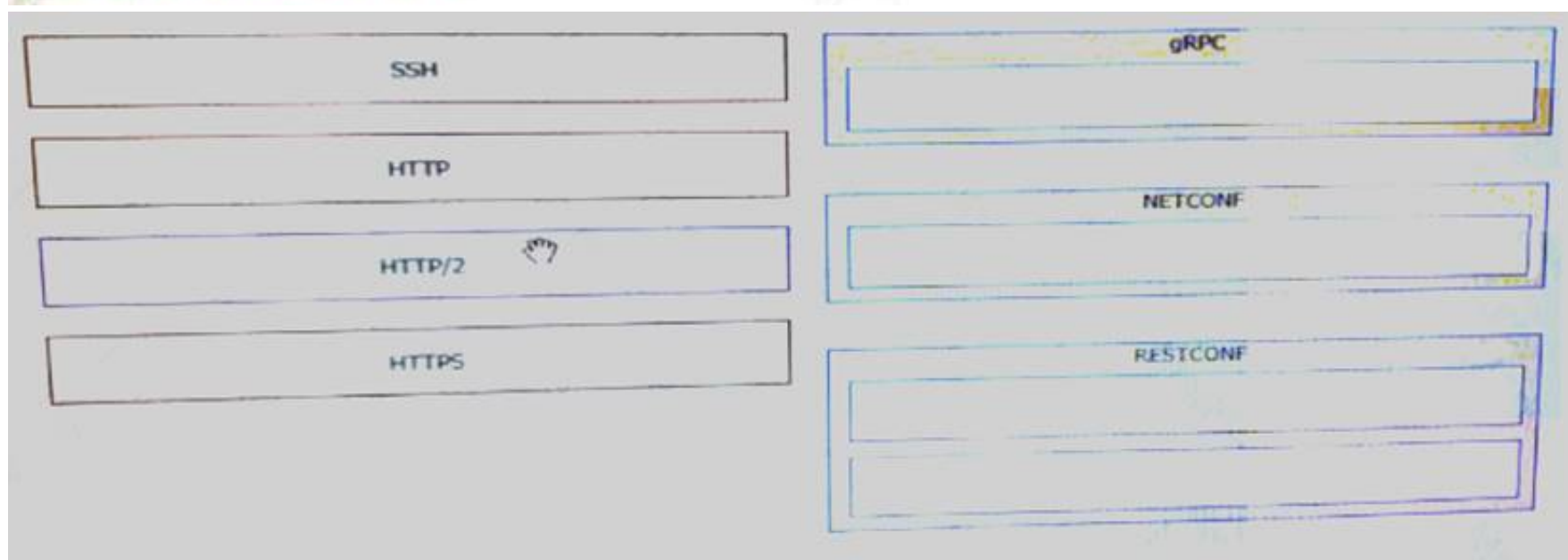
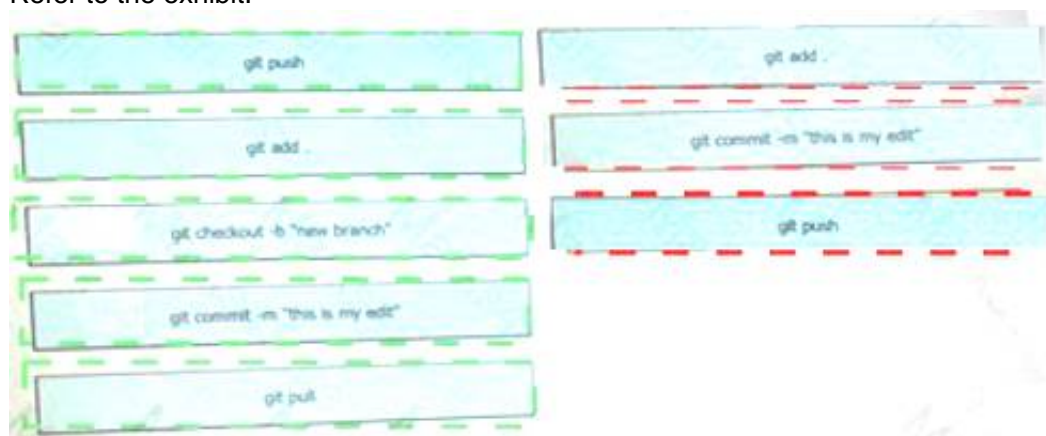
Which two elements are foundational principles of DevOps? (Choose two.)

- A. designing applications as microservices
- B. encouraging containers for the deployment of applications
- C. organizing cross-functional teams over organizational silos
- D. optimizing the cost of infrastructures
- E. automating over documenting

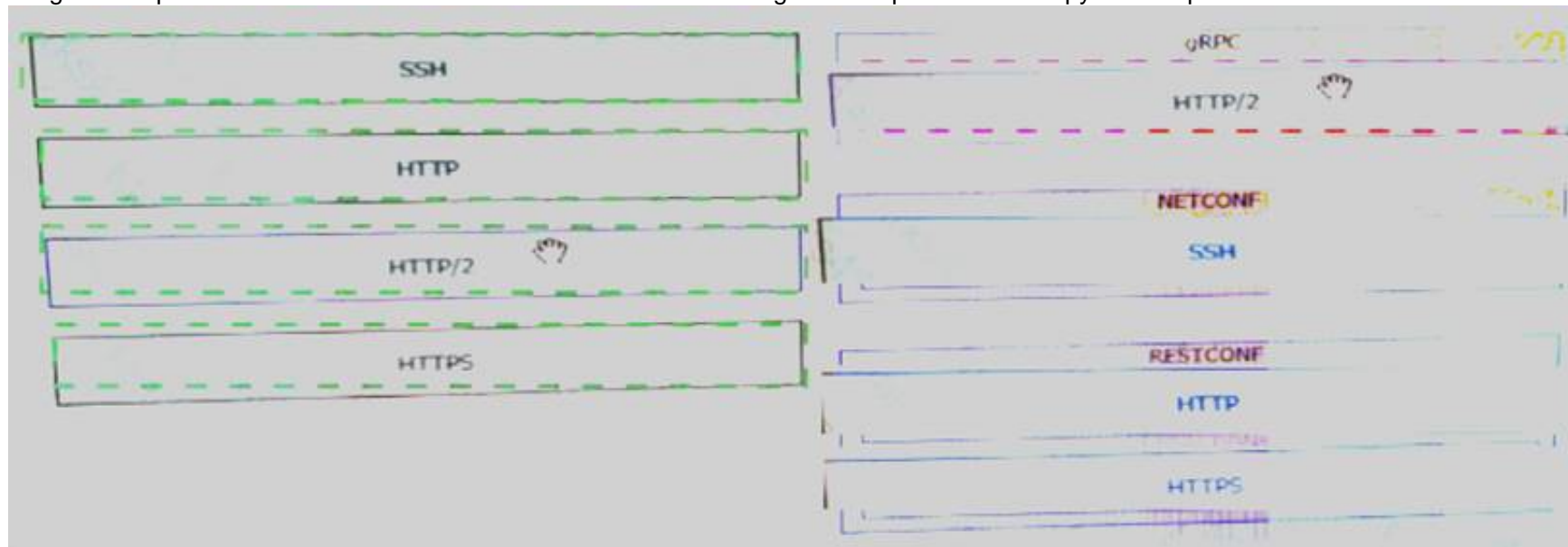
Answer: CE

NEW QUESTION 101

Refer to the exhibit.



Drag and drop the code from the left onto the item numbers on the right to complete to Meraki python script shown in the exhibit.



- A. Mastered
- B. Not Mastered

Answer: A

Explanation:

1 – D, 2 – A, 3 – H, 4 – F, 5 – G, 6 – E, 7 – C, 8 – B

NEW QUESTION 103

Package updates from a local server fail to download. However, the same updates work when a much slower external repository is used. Why are local updates failing?

- A. The update utility is trying to use a proxy to access the internal resource.
- B. The Internet connection is too slow.
- C. The Internet is down at the moment, which causes the local server to not be able to respond.
- D. The server is running out of disk space.

Answer: A

NEW QUESTION 106

Fill in the blanks to complete the python script to retrieve a list of network devices using the Cisco DNA center API.

params	<item 1>
networks	<item 2>
timespan	<item 3>
get	<item 4>
432000	<item 5>
base_url	<item 6>
application/json	<item 7>
network_id	<item 8>
clients	<item 9>
api_key	<item 10>

- A. Mastered
- B. Not Mastered

Answer: A

Explanation:

params	get
networks	base_url
timespan	networks
get	network_id
432000	clients
base_url	api_key
application/json	application/json
network_id	params
clients	timespan
api_key	432000

NEW QUESTION 108
.....

THANKS FOR TRYING THE DEMO OF OUR PRODUCT

Visit Our Site to Purchase the Full Set of Actual 200-901 Exam Questions With Answers.

We Also Provide Practice Exam Software That Simulates Real Exam Environment And Has Many Self-Assessment Features. Order the 200-901 Product From:

<https://www.2passeasy.com/dumps/200-901/>

Money Back Guarantee

200-901 Practice Exam Features:

- * 200-901 Questions and Answers Updated Frequently
- * 200-901 Practice Questions Verified by Expert Senior Certified Staff
- * 200-901 Most Realistic Questions that Guarantee you a Pass on Your FirstTry
- * 200-901 Practice Test Questions in Multiple Choice Formats and Updatesfor 1 Year