

# Cisco

## Exam Questions 350-601

Implementing and Operating Cisco Data Center Core Technologies



**NEW QUESTION 1**

A customer needs a tool to take advantage of the CI/CD model to streamline its operation and optimize cost. The customer wants to integrate the solution with the cisco products it currently uses, Including Cisco ACI networking and Cisco UCS servers. The solution should also provide on-premises Kubernetes and AppDynamics performance monitoring. Because of the security requirements, the solution not install a local client on products under management. which orchestration solution meets these requirements?

- A. Cisco APIC
- B. CISCO UCS director
- C. Cisco DCNM
- D. Cisco CloudCenter

**Answer:** D

**NEW QUESTION 2**

Which product includes prebuilt templates that can be used to customize fabric deployments?

- A. Cisco ACI
- B. Cisco UCS Manger
- C. Cisco data Center Network Manger
- D. Cisco Tetratation

**Answer:** C

**Explanation:**

<https://www.cisco.com/c/en/us/products/collateral/cloud-systems-management/prime-data-center-networkmanag>

[https://www.cisco.com/c/en/us/td/docs/switches/datacenter/sw/11\\_2\\_1/config\\_guide/lanfabric/ b\\_dcnm\\_fabric\\_lan/template\\_usage.html](https://www.cisco.com/c/en/us/td/docs/switches/datacenter/sw/11_2_1/config_guide/lanfabric/ b_dcnm_fabric_lan/template_usage.html)

**NEW QUESTION 3**

A customer wants to offload some of its order processing to a public cloud environment. The customer environment is based on Cisco ACI and uses Puppet with containenzed applications. The operations team requires a solution to orchestrate and optimize the cost of the new solution. Which product must be used to meet these requirements?

- A. Cisco Intersight
- B. Cisco Workload Optimization Manager
- C. Cisco CloudCenter
- D. Cisco Data Center Network Manager

**Answer:** C

**Explanation:**

<https://www.cisco.com/c/dam/en/us/products/collateral/cloud-systems-management/cloudcenter/white-paper-c1>

- Enforce multicloud governance by guiding user decisions to reduce risk
- Securely automate deployment to reduce manual effort and get consistent results
- Increase feature velocity via integration with developer tools to accelerate time to market (CI/CD = Puppet, Chef, and Ansible).
- Optimize cloud consumption to cut pay-per-use cloud costs

<https://www.cisco.com/c/en/us/products/collateral/cloud-systems-management/cloudcenter-suite/datasheet-c78>

**NEW QUESTION 4**

An engineer must configure a Cisco UCS domain for monitoring and management by the Cisco Intersight SaaS platform. After the setup is complete, administrators must have full control to configure the device through Cisco UCS Manager and Intersight. Which set of actions accomplishes this task?

- A. Configure Devce Connector Access Mode as Allow Control in Device Console Claim the device on Intersight as UCSM Managed Mode.
- B. Configure Device Connector Access Mode as Allow Control in Cisco UCS Manager Claim the device on intersightc as Intersight Managed Mode
- C. Configure Device Connector Access Moao as Allow Control in Device Consol
- D. Claim the device on intersight as Intersight Managed Mode
- E. Configure Device Connector Access Mode as Allow Control in Cisco UCS Manager Claim the device on intersight as UCSM Managed Mode
- F. Option A
- G. Option B
- H. Option C
- I. Option D

**Answer:** C

**NEW QUESTION 5**

Which feature must be enabled to support the use of JSON and XML encoding when a Cisco Nexus 7000 series switch is deployed?

- A. NX-API
- B. LLDP
- C. Open Agent Container
- D. Bash shell

**Answer:** A

**Explanation:**

[https://www.cisco.com/c/en/us/td/docs/switches/datacenter/nexus7000/sw/programmability/guide/ cisco\\_nexus7000\\_programmability\\_guide\\_8x/b-cisco-nexus7000-programmability-guide- 8x\\_chapter\\_011.html](https://www.cisco.com/c/en/us/td/docs/switches/datacenter/nexus7000/sw/programmability/guide/ cisco_nexus7000_programmability_guide_8x/b-cisco-nexus7000-programmability-guide- 8x_chapter_011.html)

NEW QUESTION 6

An engineer deploys a custom Guest Shell rootfs on a Nexus 9000 Series Switch. Drag and drop the steps from the left into the order required to deploy the solution on the right. Not all options are used.

Customize the guest shell rootfs.	Step 1
Export the Guest Shell rootfs.	Step 2
Store it in a file server.	Step 3
Import the Guest Shell rootfs to other switches.	Step 4
Install the specific Guest Shell across devices simultaneously.	Step 5

- A. Mastered
- B. Not Mastered

Answer: A

Explanation:

A picture containing text Description automatically generated  
<https://www.cisco.com/c/en/us/td/docs/switches/datacenter/nexus9000/sw/93x/programmability/guide/b-cisco-ne>

Replicating the Guest Shell

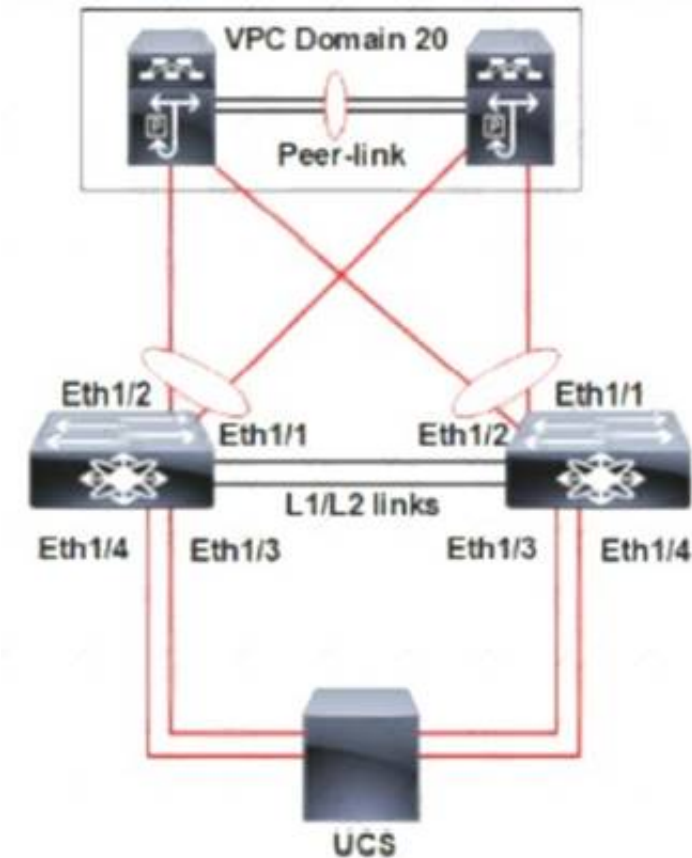
Beginning with Cisco NX-OS release 7.0(3)I7(1), a Guest Shell rootfs that is customized on one switch can be deployed onto multiple switches.

The approach is to <sup>1</sup>customize and then <sup>2</sup>export the Guest Shell rootfs and <sup>3</sup>store it on a file server. A POAP script can <sup>4</sup>download (import) the Guest Shell rootfs to other switches and <sup>5</sup>install the specific Guest Shell across many devices simultaneously.

- Exporting Guest Shell rootfs
- Importing Guest Shell rootfs
- Importing YAML File
- show guestshell Command

NEW QUESTION 7

Refer to the exhibit.



A pair of Cisco Nexus switches form a vPC. A new chassis s added to the pre-existing Cisco UCS domain. A new chassis must be discovered, and all links from the chassis to the LAN network must be established. Which set of actions accomplishes these requirements?

- ☐ Set the chassis discovery policy action to four links.  
Configure Eth1/3 and Eth1/4 as server ports.  
Acknowledge the chassis.
- ☒ Set the chassis discovery policy action to four links.  
Configure Eth1/1 and Eth1/2 as uplink Fibre Channel ports.  
Set the link group preference to None.
- ☐ Set the chassis discovery policy action to one link.  
Configure Eth1/1 and Eth1/2 as uplink Ethernet ports.  
Set the link group preference to Port Channel.
- ☐ Set the chassis discovery policy action to one link.  
Configure Eth1/3 and Eth1/4 as server ports.  
Acknowledge the chassis.

- A. Option A
- B. Option B
- C. Option C
- D. Option D

**Answer: C**

#### NEW QUESTION 8

What is a recommended design choice in a topology for multipathing iSCSI traffic?

- A. single initiator to dual targets
- B. initiators and targets in separate subnets
- C. dual initiators to a single target with bonded interfaces
- D. two NICs bended together on the initiator

**Answer: A**

#### Explanation:

[https://www.cisco.com/c/en/us/td/docs/switches/datacenter/nexus1000/sw/4\\_2\\_1\\_s\\_v\\_1\\_5\\_1/system\\_management/configuration/guide/n1000v\\_system/n1000v\\_system\\_13iscsi.html#wp1052813](https://www.cisco.com/c/en/us/td/docs/switches/datacenter/nexus1000/sw/4_2_1_s_v_1_5_1/system_management/configuration/guide/n1000v_system/n1000v_system_13iscsi.html#wp1052813)

#### NEW QUESTION 9

Which solution provides remote and direct file-level access to users and systems?

- A. direct-attached storage
- B. Fibre Channel over Ethernet
- C. storage area network
- D. network-attached storage

**Answer: D**

#### NEW QUESTION 10

Refer to the exhibit.

```
FI-1# scope org /
FI-1 /org # create maint-policy maintenance
FI-1 /org/maint-policy* # set reboot-policy timer-automatic
FI-1 /org/maint-policy* # set soft-shutdown-timer never
```

Which action must be taken before the maintenance policy can be committed?

- A. Set the soft shutdown timer to a specific time.
- B. Associate a service profile to the maintenance policy.
- C. Set the policy to apply the change on the next reboot.
- D. Specify a maintenance time by selecting a schedule.

**Answer: D**

#### Explanation:

[https://www.cisco.com/c/en/us/td/docs/unified\\_computing/ucs/ucs-manager/CLI-User-Guides/Admin-Management/3-1/b\\_Cisco\\_UCS\\_Manager\\_CLI\\_Administration\\_Mgmt\\_Guide\\_3\\_1/b\\_Cisco\\_UCS\\_Manager\\_CLI\\_Administration\\_Mgmt\\_Guide\\_3\\_1\\_chapter\\_01100.html](https://www.cisco.com/c/en/us/td/docs/unified_computing/ucs/ucs-manager/CLI-User-Guides/Admin-Management/3-1/b_Cisco_UCS_Manager_CLI_Administration_Mgmt_Guide_3_1/b_Cisco_UCS_Manager_CLI_Administration_Mgmt_Guide_3_1_chapter_01100.html)

#### NEW QUESTION 10

An engineer creates a service profile in Cisco UCS Manager and must assign a policy that reboots blades when changes are applied. The changes must be applied only after user acknowledgment. Which two policies must be configured to meet these requirements? (Choose two.)

- A. Boot Policy



- B. Global Policy
- C. Power Control Policy
- D. Maintenance Policy
- E. Reboot Policy

**Answer:** DE

**Explanation:**

[https://www.cisco.com/c/en/us/td/docs/unified\\_computing/ucs/ucs-manager/GUI-User-Guides/Admin-Managem](https://www.cisco.com/c/en/us/td/docs/unified_computing/ucs/ucs-manager/GUI-User-Guides/Admin-Managem)

## Maintenance Policy

The maintenance policy specifies how deploys the service profile changes. The deployment can occur in one of the following ways:

- Immediately
- When acknowledged by a user with administrator privileges
- Automatically at the time specified in a schedule
- On the next reboot or shutdown without waiting for the user acknowledgment or the timer scheduling option

### Reboot Policy field

When a service profile is associated with a server, or when changes are made to a service profile that is already associated with a server, you must reboot the server to complete the process. The **Reboot Policy** field determines when the reboot occurs for servers associated with any service profiles that include this maintenance policy. This can be one of the following:

- **Immediate**—The server reboots automatically as soon as the service profile association is complete or when you save service profile changes.
- **User Ack**—You must explicitly acknowledge the pending activities for the changes made to the service profile to be applied to the associated server.
- **Timer Automatic**—Cisco UCS defers all service profile associations and changes until the maintenance window defined by the schedule shown in the **Schedule** field.
- **On Next Boot**—This option is used in combination with either **User Ack** or **Timer Automatic**. When the **On Next Boot** option is enabled, the host OS reboot, shutdown, and reset, or server reset and shutdown also triggers the associated FSM to apply the changes waiting for the **User Ack**, or the **Timer Automatic** maintenance window.

**Note** De-selecting the On Next Boot option disables the Maintenance Policy on the BMC.

### NEW QUESTION 13

An engineer is enabling port security on a Cisco MDS 9000 Series Switch. Which feature of enabling port security on a Cisco MDS 9000 Series Switch must be considered?

- A. It always learns about switches that are logging in.
- B. It can be distributed by using Cisco Fabric services.
- C. It authorizes only the configured sWWN to participate in the fabric.
- D. It binds the fabric at the switch level.

**Answer:** B

**Explanation:**

## Port Security Configuration Distribution

The port security feature uses the Cisco Fabric Services (CFS) infrastructure to enable efficient database management, provide a single point of configuration for the entire fabric in the VSAN, and enforce the port security policies throughout the fabric.

[https://www.cisco.com/c/en/us/td/docs/switches/datacenter/mds9000/sw/6\\_2/configuration/guides/security/nx-o](https://www.cisco.com/c/en/us/td/docs/switches/datacenter/mds9000/sw/6_2/configuration/guides/security/nx-o)

### NEW QUESTION 14

An engineer needs to Implement a solution that prevents loops from occurring accidentally by connecting a switch to interface Ethernet1/1. The port is designated to be used for host connectivity. What configuration should be implemented?

- ☐ switch# configure terminal  
switch(config)# interface Ethernet1/1  
switch(config-if)# spanning-tree guard loop
- ☐ switch# configure terminal  
switch(config)# interface Ethernet1/1  
switch(config-if)# spanning-tree bpdudfilter enable
- ☐ switch# configure terminal  
switch(config)# interface Ethernet1/1  
switch(config-if)# spanning-tree bpduguard enable
- ☐ switch# configure terminal  
switch(config)# interface Ethernet1/1  
switch(config-if)# spanning-tree loopguard default

- A. Option A
- B. Option B
- C. Option C
- D. Option D

**Answer:** C

#### NEW QUESTION 19

What is a feature of NFS?

- A. role-based access control
- B. Kerberos-based security model
- C. block-based file access
- D. zone-based access control

**Answer:** B

#### Explanation:

<https://www.cisco.com/c/en/us/support/docs/security-vpn/kerberos/16087-1.html#modifiednfs>

#### Kerberos Security Implications of the Modified NFS

This implementation is not completely secure. For starters, user data is still sent across the network in an unencrypted, and therefore interceptable, form. The low-level, per-transaction authentication is based on a <CLIENT-IP-ADDRESS, CLIENT-UID> pair provided unencrypted in the request packet. This information could be forged and thus security compromised. However, it should be noted that only while a user is actively using her/his files (that is, while logged in) are valid mappings in place and therefore this form of attack is limited to when the user in question is logged in. When a user is not logged in, no amount of IP address forgery will permit unauthorized access to her/his files.

#### NEW QUESTION 21

Which two methods are available to Manage an ACI REST API session authentication when a user is unauthenticated?

- A. POST to aaaLogin
- B. POST to aaaUserLogin
- C. GET aaaRefresh
- D. GET to aaaListDomains
- E. DELETE to aaaLogout

**Answer:** AC

#### Explanation:

These API methods enable you to manage session authentication:

aaaLogin —Sent as a POST message, this method logs in a user and opens a session. The message body contains an aaa:User object with the name and password attributes, and the response contains a session token and cookie. If multiple AAA login domains are configured, you must prepend the user's name with apic: domain\\ .

aaaRefresh —Sent as a GET message with no message body or as a POST message with the aaaLogin message body, this method resets the session timer. The response contains a new session token and cookie.

aaaLogout —Sent as a POST message, this method logs out the user and closes the session. The message body contains an aaa:User object with the name attribute. The response contains an empty data structure.

aaaListDomains —Sent as a GET message, this method returns a list of valid AAA login domains. You can send this message without logging in.

[https://www.cisco.com/c/en/us/td/docs/switches/datacenter/aci/apic/sw/2-x/rest\\_cfg/2\\_1\\_x/b\\_Cisco\\_APIC\\_REST\\_API\\_Configuration\\_Guide/b\\_Cisco\\_APIC\\_REST\\_API\\_Configuration\\_Guide\\_chapter\\_01.html](https://www.cisco.com/c/en/us/td/docs/switches/datacenter/aci/apic/sw/2-x/rest_cfg/2_1_x/b_Cisco_APIC_REST_API_Configuration_Guide/b_Cisco_APIC_REST_API_Configuration_Guide_chapter_01.html)

#### NEW QUESTION 22

A storage array must be connected to port ethernet1/10 on a Cisco MDS 9000 Series Switch. In addition, the array must connect using the FCoE protocol and be single-homed. Which configuration meets these requirements?

- ☒ **vlan database**  
vlan 101 fcoe  
vsan 101 enable  
interface vfc 10 vsan 101
- interface vfc 10**  
switchport mode fcoe  
switchport access vlan 101  
bind interface ethernet1/10
- ☒ **vlan database**  
vlan 101 vsan  
vsan 101 fcoe  
vsan 101 interface vfc 10
- interface ethernet1/10**  
switchport mode trunk  
bind interface vfc 10  
fcoe vsan 101
- ☐ **vsan database**  
vlan 101  
vsan 101  
fcoe vsan 101 interface vfc 10
- interface 1/10**  
switchport mode e  
fcoe vfc 10
- ☐ **interface vfc 10**  
switchport mode f  
bind interface ethernet 1/10
- vsan database**  
vsan 101  
vlan 101  
fcoe vsan 101  
vsan 101 interface vfc 10

- A. Option A  
B. Option B  
C. Option C  
D. Option D

**Answer:** D

#### NEW QUESTION 23

A network engineer is deploying a cisco ALL-flash hyperflex solution. Which local storage configuration is required for the operating system and persistent logging?

- A. Two solid state drives  
B. Two SATA drives  
C. One SATA drive  
D. One solid state drive

**Answer:** D

#### NEW QUESTION 25

Which component is upgraded by using an EPLD upgrade on a Cisco Nexus 9000 Series Switch?

- A. dual-homed fabric extenders  
B. BIOS  
C. field-programmable gate arrays  
D. ISSU of the NX-OS version

**Answer:** C

#### NEW QUESTION 26

An engineer must implement a disaster recovery policy for the Cisco UCS infrastructure. The solution must meet these criteria:

- The Recovery Point Objective must be 48 hours.
- The backup must use encrypted transmission.
- The Recovery Time Objective must be 4 hours.

Which configuration set must be used in the scheduled backup to meet these requirements?



- ☒ Protocol: SFTP  
Schedule: Weekly
- ☐ Protocol: FTP  
Schedule: Bi-Weekly
- ☐ Protocol: TFTP  
Schedule: Bi-Weekly
- ☐ Protocol: SCP  
Schedule: Daily

- A. Option A
- B. Option B
- C. Option C
- D. Option D

**Answer: D**

#### NEW QUESTION 29

A network engineer plans to upgrade the firmware of a Cisco UCS B-Series chassis by using the Auto Install feature. Which component is upgraded during the infrastructure firmware upgrade stage?

- A. Cisco IMC
- B. Adapter
- C. I/O module
- D. BIOS

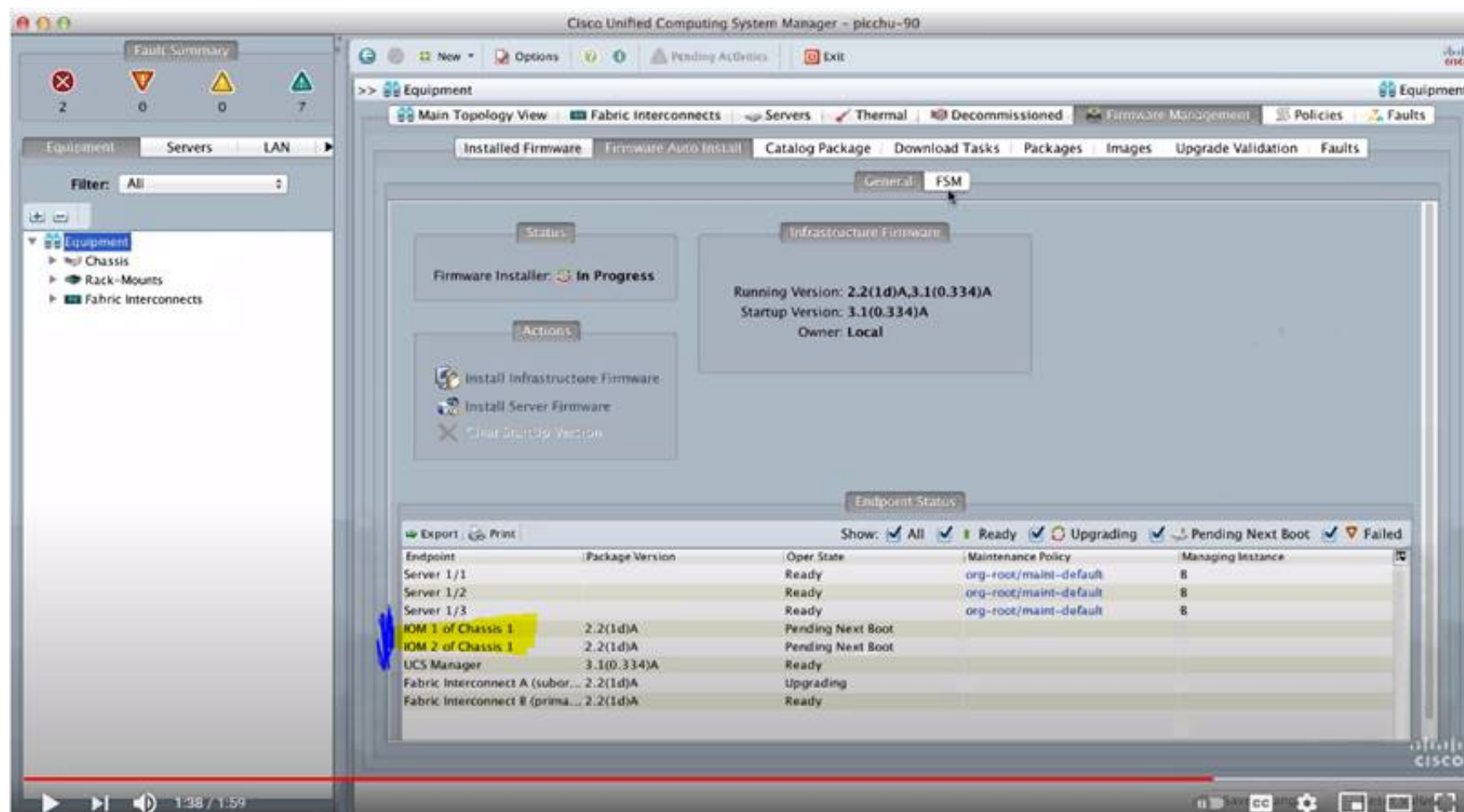
**Answer: C**

#### Explanation:

[https://www.cisco.com/c/en/us/td/docs/unified\\_computing/ucs/ucs-manager/GUI-User-Guides/Firmware-Mgmt/](https://www.cisco.com/c/en/us/td/docs/unified_computing/ucs/ucs-manager/GUI-User-Guides/Firmware-Mgmt/) <https://www.youtube.com/watch?v=g-4OgYigvRI>

### Direct Upgrade After Auto Install

During Auto Install, the startup version of the default infrastructure pack is configured. To **successfully complete a direct upgrade or activation of Cisco UCS Manager, Fabric Interconnects, and IOMs after Auto Install**, ensure that the startup version is cleared before starting direct upgrade or activation. If the startup version of the default infrastructure pack is configured, you cannot directly upgrade or activate Cisco UCS Manager, Fabric Interconnects, and IOMs. , provides detailed steps for clearing the startup version.



#### NEW QUESTION 34

After a Cisco Nexus 7000 Series Switch chassis replacement, the administrator discovers that all vPC-enabled LACP port channels are reinitialized. The administrator wants to prevent this issue the next time the chassis is replaced. Which two actions must be taken to meet this requirement before the isolated device is reloaded? (Choose two)

- A. Set the vPC MAC address to a lower value than the peer
- B. Change the vPC system-priority of the replacement chassis to a higher value than the peer if.



- C. Change the vPC system-priority of the replacement chassis to a lower value than the peer.
- D. Set the vPC MAC address to a higher value than the peer
- E. Configure auto-recovery to the disable state on both peers

**Answer:** BE

**Explanation:**

[https://www.cisco.com/c/en/us/td/docs/switches/datacenter/nexus9000/sw/6-x/interfaces/configuration/guide/b\\_](https://www.cisco.com/c/en/us/td/docs/switches/datacenter/nexus9000/sw/6-x/interfaces/configuration/guide/b_)  
 -----  
<https://community.cisco.com/t5/networking-documents/vpc-auto-recovery-feature-in-nexus-7000/ta-p/3123651>

**vPC and LACP**

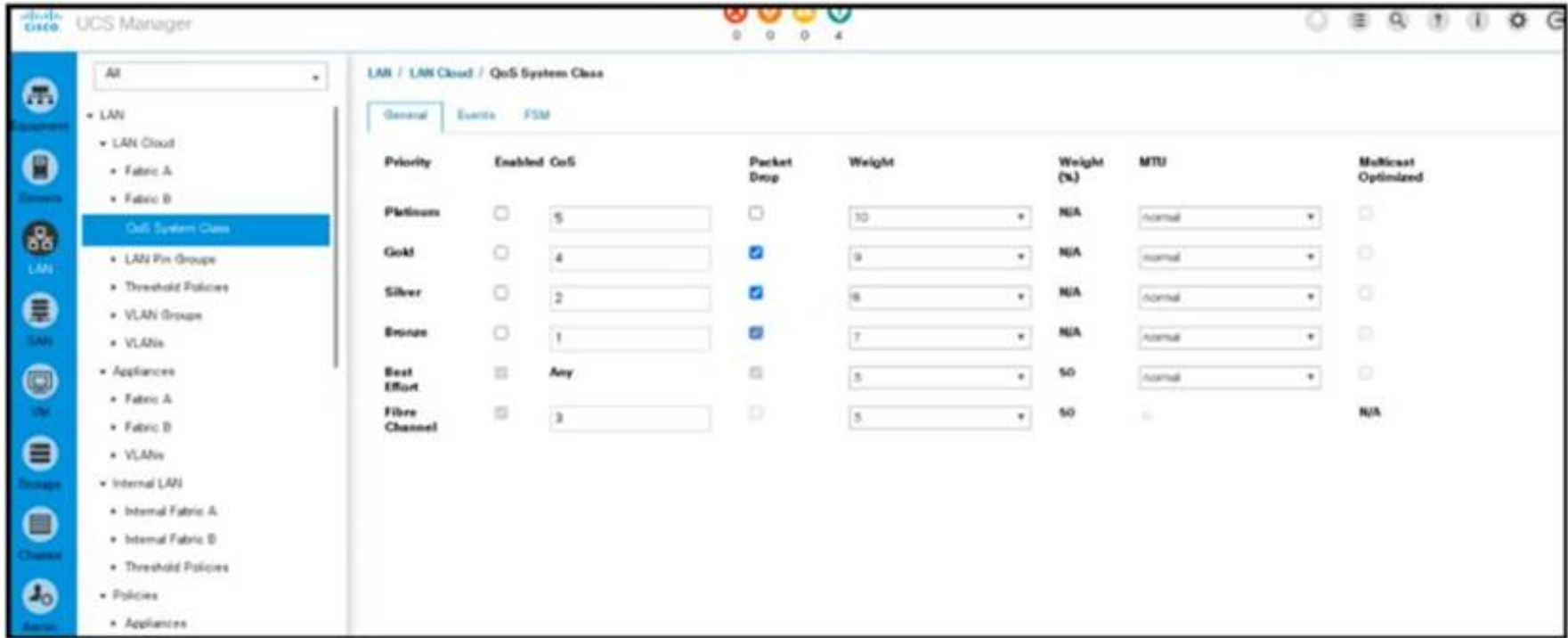
The Link Aggregation Control Protocol (LACP) uses the system MAC address of the vPC domain to form the LACP Aggregation Group (LAG) ID for the vPC.

You can use LACP on all the vPC EtherChannels, including those channels from the downstream switch. We recommend that you configure LACP with active mode on the interfaces on each EtherChannel on the vPC peer switches. This configuration allows you to more easily detect compatibility between switches, unidirectional links, and multihop connections, and provides dynamic reaction to run-time changes and link failures.

The vPC peer link supports 16 EtherChannel LACP interfaces. You should manually configure the system priority on the vPC peer-link switches to ensure that the vPC peer-link switches have a **higher LACP priority** than the downstream connected switches. **A lower numerical value system priority means a higher LACP priority.**

**NEW QUESTION 39**

Refer to the exhibit.



An engineer must configure a QoS policy that controls only vHBA traffic. Which policy must be used to meet this requirement?

- A. Best Effort
- B. Fibre Channel
- C. Gold
- D. Platinum

**Answer:** B

**NEW QUESTION 42**

Refer to the exhibit.

LAN / Traffic Monitoring Sessions / Fabric A / Monitor Session test-span

General Faults Events

Actions	Properties
Set Destination	Name : test-span
Clear Destination	Admin State : <input checked="" type="radio"/> Enabled <input type="radio"/> Disabled
Delete	Destination : sys/switch-A/slot-1/switch-ether/port-17
	Admin Speed : <input type="radio"/> 1 Gbps <input checked="" type="radio"/> 10 Gbps <input type="radio"/> 40 Gbps
	Operational State : Down
	Operational State Reason : No Sources Configured
	Configuration Success : Yes
	Configuration Failure Reason :

Sources

An engineer must monitor all LAN traffic on Fabric A from a blade server. Which source should be configured in the test-span monitor session to complete this task?

- A. all vHBAs from the service profile that correspond to this server
- B. all uplink FCoE ports
- C. all uplink Ethernet ports
- D. all vNICs from the service profile that correspond to this server

**Answer: D**

**Explanation:**

[https://www.cisco.com/en/US/docs/unified\\_computing/ucs/sw/gui/config/guide/141/UCSM\\_GUI\\_Configuration](https://www.cisco.com/en/US/docs/unified_computing/ucs/sw/gui/config/guide/141/UCSM_GUI_Configuration)

Guidelines and Recommendations for Traffic Monitoring

When configuring or activating traffic monitoring, consider the following guidelines:

- You can create and store up to 16 traffic monitoring sessions, but only two can be active at the same time.
- A traffic monitoring session is disabled by default when created. To begin monitoring traffic, you must activate the session.
- To monitor traffic from a server, add all vNICs from the service profile corresponding to the server.
- To monitor traffic from a VM, you must first determine the identity of the dynamic vNIC assigned to the VM. Follow the procedure in to find the vNIC and view its identity properties, then add the vNIC as a source for the monitoring session. If you later move the VM using VMotion, a new dynamic vNIC is assigned and you must reconfigure the monitoring source.

Viewing Dynamic vNIC Properties in a VM

- You can monitor Fibre Channel traffic using either a Fibre Channel traffic analyzer or an Ethernet traffic analyzer. When Fibre Channel traffic is monitored using an Ethernet traffic monitoring session, with an Ethernet destination port, the destination traffic will be FCoE.
- Because a traffic monitoring destination is a single physical port, a traffic monitoring session can monitor only a single fabric. To monitor uninterrupted vNIC traffic across a fabric failover, you must create two sessions—one per fabric—and connect two analyzers. Add the vNIC as the traffic source for both sessions.
- All traffic sources must be located within the same switch as the destination port.
- A port configured as a destination port cannot also be configured as a source port.
- A member port of a port channel cannot be configured individually as a source. If the port channel is configured as a source, all member ports are source ports.

**NEW QUESTION 44**

Refer to Exhibit:

```
n9k2# guestshell
[guestshell@guestshell ~]$ python
Python 2.7.5 (default, Jun 17 2014, 18:11:42)
[GCC 4.8.2 20140120 (Red Hat 4.8.2-16)] on linux2
Type "help", "copyright", "credits" or "license" for more information.
>>>
```

An engineer must use the python module in the guest shell of the Cisco Nexus 9000 Series switch to shutdown port Ethernet 1/4 Which command set will accomplish this?

- ☐ from cli import \*  
cli("conf t")  
cli("interface eth1/4")  
cli("shutdown")
- ☐ from cli import \*  
cli("conf t ; interface eth1/4 ; shut")
- ☒ from cisco import cli  
cli("conf t ; interface eth1/4")  
cli("shutdown")
- ☒ from cisco import cli  
cli("conf t" ; "interface eth1/4" ; "shut")

- A. Option A
- B. Option B
- C. Option C
- D. Option D

Answer: B

Explanation:

When two or more commands are run individually, the state is not persistent from one command to subsequent commands.

In the following example, the second command fails because the state from the first command does not persist for the second command.

```
>>> cli("conf t")
>>> cli("interface eth4/1")
```



When two or more commands are run together, the state is persistent from one command to subsequent commands.

In the following example, the second command is successful because the state persists for the second and third commands.

```
>>> cli("conf t ; interface eth4/1 ; shut")
```



**Note** Commands are separated with " ; " as shown in the example. The semicolon ( ; ) must be surrounded with single blank characters.

[https://www.cisco.com/c/en/us/td/docs/switches/datacenter/nexus9000/sw/7-x/programmability/guide/b\\_Cisco\\_Nexus\\_9000\\_Series\\_NX-OS\\_Programmability\\_Guide\\_7x/Python\\_API.html](https://www.cisco.com/c/en/us/td/docs/switches/datacenter/nexus9000/sw/7-x/programmability/guide/b_Cisco_Nexus_9000_Series_NX-OS_Programmability_Guide_7x/Python_API.html) <https://www.ciscolive.com/c/dam/r/ciscolive/apjc/docs/2016/pdf/DEVNET-1077.pdf>

#### NEW QUESTION 48

An engineer must send JSON encoded telemetry data to an external collector. The transport mechanism must prevent tampering or forgery of the data. Which protocol accomplishes this goal?

- A. GPB
- B. HTTP
- C. gRPC
- D. DTLS

Answer: B

#### NEW QUESTION 49

A Cisco MDS 9000 Series Switch is configured for SAN Analytics and SAN Telemetry Streaming. An engineer must enable analytics for NVMe on interfaces in the range of fc1/1-12. Due to a large amount of traffic generated in the SAN environment, the data must be collected at regular intervals of 60 seconds from ports fc1/1-12 and then for ports fc13-24 for the next 60 seconds. Ports in the range fc4/13-14 were already enabled for analytics. Which set of commands must be used to meet these requirements?



- visit - <https://www.surepassexam.com>



- A. Mastered
- B. Not Mastered

**Answer:** A

**Explanation:**

NFS

Data storage and file sharing requests are sent and received The protocol is regularly used on Linux segment

NAS

Software is deployed on a lightweight OS that is embedded in the hardware The vendor-agnostic protocol is supported on any hardware and OS

**NEW QUESTION 66**

Refer to the exhibit.

```
Enter the configuration method. (console/gui) ? console

Enter the setup mode; setup newly or restore from backup.
(setup/restore) ? restore

NOTE:
  To configure Fabric interconnect using a backup file on
a remote server, you will need to setup management
interface.
  The management interface will be re-configured (if
necessary), based on information stored in the backup file.

Continue to restore this Fabric interconnect from a backup
file (yes/no) ? yes

Physical Switch Mgmt0 IPv4 address : 192.168.10.10
Physical Switch Mgmt0 IPv4 netmask : 255.255.255.0
IPv4 address of the default gateway : 192.168.10.1
Enter the protocol to get backup file (scp/ftp/tftp/sftp)
? scp
Enter the IP address of backup server: 20.10.20.10
Enter fully qualified backup file name: Backup.bak
Enter user ID: user
Enter password:
  Retrieved backup configuration file.
Configuration file - Ok
```

Which type of backup is required to restore a Cisco UCS configuration?

- A. system configuration
- B. all configuration
- C. logical configuration
- D. full state

**Answer:** A

**Explanation:**

[https://www.cisco.com/c/en/us/td/docs/unified\\_computing/ucs/sw/cli/config/guide/1-0-2/b\\_CLI\\_Config\\_Guide\\_](https://www.cisco.com/c/en/us/td/docs/unified_computing/ucs/sw/cli/config/guide/1-0-2/b_CLI_Config_Guide_)

The following example restores a system configuration from the Backup.bak file, which was retrieved from the 20.10.20.10 backup server using FTP:

```
Enter the configuration method. (console/gui) ? console

Enter the setup mode; setup newly or restore from backup. (setup/restore) ? restore

NOTE:
  To configure Fabric interconnect using a backup file on a remote server,
  you will need to setup management interface.
  The management interface will be re-configured (if necessary),
  based on information stored in the backup file.

Continue to restore this Fabric interconnect from a backup file (yes/no) ? yes

Physical Switch Mgmt0 IPv4 address : 192.168.10.10

Physical Switch Mgmt0 IPv4 netmask : 255.255.255.0

IPv4 address of the default gateway : 192.168.10.1

Enter the protocol to get backup file (scp/ftp/tftp/sftp) ? scp
Enter the IP address of backup server: 20.10.20.10
Enter fully qualified backup file name: Backup.bak
Enter user ID: user
Enter password:
  Retrieved backup configuration file.
Configuration file - Ok
```

```
Cisco UCS 6100 Series Fabric Interconnect
UCS-A login:
```

#### NEW QUESTION 69

Which configuration statically assigns VSAN membership to a virtual Fibre Channel interface?

- A. switch(config-vsan-cb)># vsan 100 bind interface fc 3/1
- B. switch<config-vsan-db># vsan 100 bind interface vfc 31
- C. switch(config-vsan-db)># vsan 100 fc 3/1
- D. switch(config-vsan-db)# vsan 100 interface vfc 31

**Answer:** D

#### Explanation:

<https://www.cisco.com/c/en/us/td/docs/switches/datacenter/nexus5000/sw/configuration/guide/cli/CLIConfigurationGuide/vsan.html>

#### NEW QUESTION 74

A network engineer connects the CNA interface of a server to a switch. The switch must bring down all of the VLANs on the interface that are not enabled for FCoE, but the VLANs that are enabled for FCoE should continue to carry SAN traffic without interruption. Which configuration should be applied to the switch to achieve this objective?

- A. switch(config)# interface Ethernet 2/1 switch(config-if)# shutdown lan
- B. switch(config)# interface vfc 2 switch(config-if)# shutdown lan
- C. switch(config)# Interface Ethernet vfc 2 switch(config-if)# shutdown force
- D. switch(config)# interface Ethernet 2/1 switch(config-if)# shutdown force

**Answer:** A

#### NEW QUESTION 75

Which two statements describe modifying Cisco UCS user accounts? (Choose two.)

- A. Disabling a user account maintains all of the data in the Cisco UCS Fabric Interconnect.
- B. The admin account is used only to log on by using SSH.
- C. The password of the user account must contain a minimum of 10 characters.
- D. Local user accounts override the same account on a remote authentication server, such as TACACS, RADIUS, or LDAP.
- E. The password of the user account expires in 30 days.

**Answer:** AD

#### Explanation:

[https://www.cisco.com/c/en/us/td/docs/unified\\_computing/ucs/ucs-manager/GUI-User-Guides/Admin-Managem](https://www.cisco.com/c/en/us/td/docs/unified_computing/ucs/ucs-manager/GUI-User-Guides/Admin-Managem)

#### NEW QUESTION 80

An engineer is duplicating an existing Cisco UCS setup at a new site. What are two characteristics of a logical configuration backup of a Cisco UCS Manager database? (Choose two.)

- A. contains the AAA and RBAC configurations
- B. contains a file with an extension.tgz that stores all of the configurations
- C. contains the configuration organizations and locales
- D. contains all of the configurations

E. contains the VLAN and VSAN configurations

**Answer:** CE

**Explanation:**

Logical configuration—An XML file that includes all logical configuration settings such as service profiles, VLANs, VSANs, pools, and policies. You can use the file generated from this backup to import these configuration settings to the original fabric interconnect or to a different fabric interconnect. You cannot use this file for a system restore.

**NEW QUESTION 81**

Which two actions are needed to configure a single Cisco APIC controller for Cisco ACI fabric for the first time? (Choose two.)

- A. Register the APIC that is connected to the switch.
- B. Configure the first Cisco APIC controller
- C. Configure the leaf switch where the Cisco APIC is connected, using CLI to allow APIC connectivity
- D. Register the switches that are discovered through LLDP.
- E. Register all leaf and spine switches

**Answer:** AE

**NEW QUESTION 83**

Refer to the exhibit.

```
Nexus# show vpc peer-keepalive | i Keepalive
--Keepalive interval : 1000 msec
--Keepalive timeout : 5 seconds
--Keepalive hold timeout : 3 seconds
--Keepalive vrf : management
--Keepalive udp port : 3200
--Keepalive tos : 192

Nexus# ethanalyzer local interface mgmt limit-captured-frames 1000

Capturing on mgmt0
2019-06-15 12:01:51.242597 192.168.254.11 -> 192.168.254.3 ICMP Echo (ping) request
2019-06-15 12:01:51.242860 192.168.254.3 -> 192.168.254.11 ICMP Echo (ping) reply
2019-06-15 11:50:15.975474 192.168.254.1 -> 192.168.254.3 TCP 47540 > bootps [SYN] Seq=0 Win=1024 Len=0 MSS=1460
2019-06-15 11:50:15.975547 192.168.254.3 -> 192.168.254.1 TCP 29 > 47540 [RST, A CK] Seq=1 Ack=1 Win=0 Len=0
2019-06-15 11:50:15.975564 192.168.254.1 -> 192.168.254.3 TCP 47540 > 44 [SYN] Seq=0 Win=1024 Len=0 MSS=1460
2019-06-15 11:50:15.975924 192.168.254.1 -> 192.168.254.3 TCP 47540 > discard [SYN] Seq=0 Win=1024 Len=0 MSS=1460
2019-06-15 11:50:15.976027 192.168.254.1 -> 192.168.254.3 TCP 47540 > 97 [SYN] Seq=0 Win=1024 Len=0 MSS=1460
2019-06-15 11:50:15.976381 192.168.254.1 -> 192.168.254.3 TCP 47540 > 35 [SYN] Seq=0 Win=1024 Len=0 MSS=1460
2019-06-15 11:50:16.661845 192.168.254.3 -> 192.168.254.4 UDP Source port: 3200 Destination port: 3200
2019-06-15 11:50:16.761147 00:8e:73:a2:41:13 -> 01:80:c2:00:00:00 STP Conf. Root = 8192/10/ec:e1:a9:df:6c:80 Cost = 22 Port = 0x8013
2019-06-15 11:50:16.853248 192.168.254.4 -> 192.168.254.3 UDP Source port: 3200 Destination port: 3200
2019-06-15 11:50:17.326253 192.168.254.1 -> 192.168.254.3 SSH Encrypted request packet len=52
2019-06-15 11:50:17.327313 192.168.254.3 -> 192.168.254.1 SSH Encrypted response packet len=1348
2019-06-15 11:50:17.377246 192.168.254.4 -> 239.255.70.83 UDP Source port: 7546 Destination port: 7546
2019-06-15 11:50:17.552215 192.168.254.1 -> 192.168.254.3 TCP 14139 > ssh [ACK] Seq=365 Ack=11277 Win=63546 Len=0
2019-06-15 11:50:17.661764 192.168.254.3 -> 192.168.254.4 UDP Source port: 3200 Destination port: 3200
2019-06-15 11:50:17.653242 192.168.254.4 -> 192.168.254.3 UDP Source port: 3200 Destination port: 3200
2019-06-15 11:50:17.872637 8c:60:4f:aa:c2:e1 -> 01:80:e7:00:00:0e LLDP Chassis : d = 8c:60:41:aa:c2:e1 Port Id = mgmt0 TTL = 120
2019-06-15 11:50:08.173056 192.168.256.3 -> 192.168.254.2 NTP NTP client
2019-06-15 11:50:08.173256 192.168.256.2 -> 192.168.254.3 NTP NTP server
```

A flapping link issue has been reported on the vPC keepalive link. A packet capture has been activated on the Cisco Nexus switch. What is the destination IP address of the vPC keepalive packets that are sent by the switch?

- A. 192.168.254.4
- B. 239.255.70.83
- C. 192.168.254.1
- D. 192.168.254.2

**Answer:** A

**Explanation:**

<https://www.cisco.com/c/en/us/td/docs/switches/datacenter/nexus3000/sw/interfaces/92x/b-cisco-nexus-3000-nx>

**NEW QUESTION 86**

A cisco Nexus 9000 series switch experiences a startup configuration corruption. The engineer must implement a procedure to recover configuration file from the switch. Which command set must be used?

- A. \* 1. Copy the running-configuration to the startup configuration.\* 2. Clear the current configuration of the switch.\* 3. Restart the device.\* 4. Copy a previously saved configuration file to the running configuration.
- B. \* 1. Clear the current configuration of the switch\* 2. Restart the device.\* 3. Copy the running configuration to the startup configuration\* 4. Copy a previously saved configuration file to the running configuration
- C. \* 1. Clear the current configuration of the switch\* 2. Restart the device.\* 3. Copy a previously saved configuration file to the running-configuration\* 4. Copy the running-configuration to the startup configuration.



D. \* 1.Restarting device.\* 2. Copy the running-configuration file to a remote server.\* 3. Clear the current configuration of the switch.\* 4. Copy the running configuration to the startup configuration

Answer: C

Explanation:

Problems, such as memory corruption, can occur that make it necessary for you to recover your configuration from a backed-up version. Each time that you enter a copy running-config startup-config command, a binary file is created and the ASCII file is updated. A valid binary configuration file reduces the overall boot time significantly. A binary file cannot be uploaded, but its contents can be used to overwrite the existing startup configuration. The write erase command clears the binary file.

SUMMARY STEPS

- \* 1. write erase
- \* 2. reload
- \* 3. copy configuration-file running-configuration
- \* 4. copy running-config startup-config <https://www.cisco.com/c/en/us/td/docs/switches/datacenter/nexus9000/sw/93x/fundamentals/configuration/guide>

NEW QUESTION 90

A network engineer must prevent data corruption due to cross fabric communication in an FCoE environment. Which configuration must be applied to the Cisco Nexus Unified Switches to achieve this objective?

- A. Switch(config)#fcoe fcmmap 0e,fc,2a
- B. Switch(config-if)# no fcoe fcf-priority 0
- C. Switch(config-if) # shutdown lan
- D. Switch(config) # no fcoe fcf-priority

Answer: A

Explanation:

2. switch(config)# fcoe fcmmap fabric-map

3. (Optional) switch(config)# no fcoe fcmmap fabric-map

DETAILED STEPS

	Command or Action	Purpose
Step 1	switch# configure terminal	Enters configuration mode.
Step 2	switch(config)# fcoe fcmmap fabric-map	Configures the global FC-Map. The default value is 0E.FC.00. The range is from 0E.FC.00 to 0E.FC.FF
Step 3	switch(config)# no fcoe fcmmap fabric-map	(Optional) Resets the global FC-Map to the default value of 0E.FC.00.

This example shows how to configure the global FC-Map:

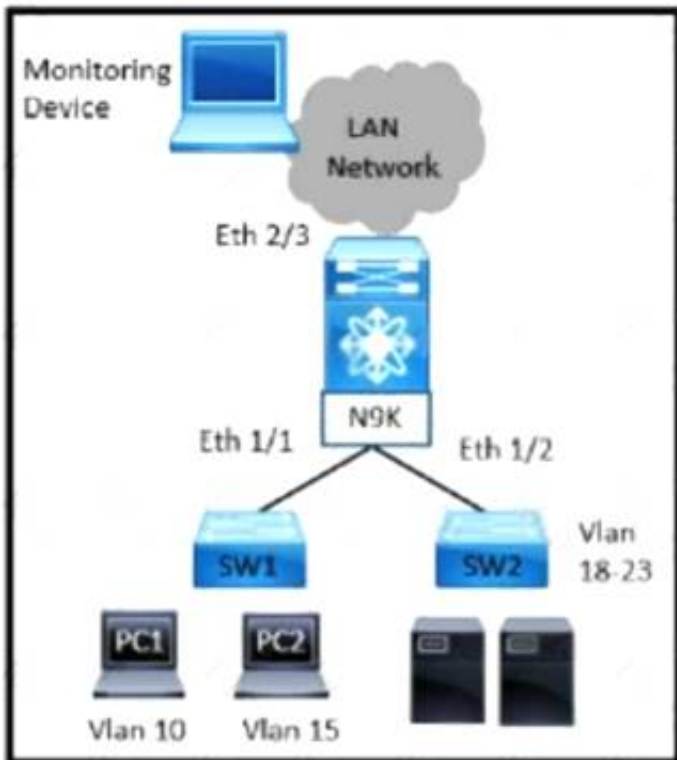
```
switch# configure terminal
switch(config)# fcoe fcmmap 0e.fc.2a
```

[https://www.cisco.com/c/en/us/td/docs/switches/datacenter/nexus5000/sw/fcoe/ b\\_Cisco\\_Nexus\\_5000\\_Series\\_NX-OS\\_Fibre\\_Channel\\_over\\_Ethernet\\_Configuration\\_Guide/\\_Cisco\\_Nexus\\_5000\\_Series\\_NX-OS\\_Fibre\\_Channel\\_over\\_Ethernet\\_Configuration\\_Guide\\_chapter3.html](https://www.cisco.com/c/en/us/td/docs/switches/datacenter/nexus5000/sw/fcoe/b_Cisco_Nexus_5000_Series_NX-OS_Fibre_Channel_over_Ethernet_Configuration_Guide/_Cisco_Nexus_5000_Series_NX-OS_Fibre_Channel_over_Ethernet_Configuration_Guide_chapter3.html)  
You can prevent data corruption due to cross-fabric talk by configuring an FC-Map that identifies the Fibre Channel fabric for this Cisco Nexus device. When the FC-Map is configured, the switch discards the MAC addresses that are not part of the current fabric.  
switch(config)# fcoe fcmmap fabric-map Configures the global FC-Map. The default value is 0E.FC.00. The range is from 0E.FC.00 to 0E.FC.FF.  
[https://www.cisco.com/c/en/us/td/docs/switches/datacenter/nexus5000/sw/fcoe/513\\_n1\\_1/b\\_Cisco\\_n5k\\_fcoe\\_co](https://www.cisco.com/c/en/us/td/docs/switches/datacenter/nexus5000/sw/fcoe/513_n1_1/b_Cisco_n5k_fcoe_co)

NEW QUESTION 94

Refer to the exhibit





A network administrator experiences these issues with the network:

- > PC1 is experiencing a buffering problem for video applications
- > The servers that are connected to SW2 are experiencing packet drops when they connect to the Internet

The engineer wants to configure the required traffic capture to investigate the issue further Which configuration must be implemented to monitor the traffic?

- ☐ N9K(config)# monitor session 5 rx  
 N9K(config)# monitor session 5 tx  
 N9K(config-monitor)# description Span\_session\_5  
 N9K(config-monitor)# source interface ethernet 1/1  
 N9K(config-monitor)# source interface ethernet 1/2  
 N9K(config-monitor)# destination interface ethernet 2/3
- ☐ N9K(config)# monitor session 5 tx  
 N9K(config-monitor)# description Span\_session\_5  
 N9K(config-monitor)# source interface ethernet 1/1  
 N9K(config-monitor)# source interface ethernet 1/2  
 N9K(config-monitor)# destination interface ethernet 2/3
- ☐ N9K(config)# monitor session 5 tx  
 N9K(config-monitor)# description Span\_session\_5  
 N9K(config-monitor)# source vlan 10-15 rx  
 N9K(config-monitor)# source interface ethernet 1/2  
 N9K(config-monitor)# destination interface ethernet 2/3
- ☒ N9K(config)# monitor session 5 rx  
 N9K(config-monitor)# description Span\_session\_5  
 N9K(config-monitor)# source vlan 10 rx  
 N9K(config-monitor)# source interface ethernet 1/2  
 N9K(config-monitor)# destination interface ethernet 2/3

- A. Option A
- B. Option B
- C. Option C
- D. Option D

**Answer: D**

#### NEW QUESTION 97

A customer deploys a media server to distribute streaming videos to network clients. The requirement is to allow the video feed to reach only requesting clients. The shared trees must not propagate the video feed if no clients from that tree request it. To reduce configuration touchpoints, the solution must support the automatic discovery and announcement of RP-set information. Each router in the network is responsible for selecting the RP. Which configuration set meets these requirements?

A)

```

router(config-if)# ip pim bidir-enable
router(config)# ip pim ssm default
router(config)# ip igmp version 3
  
```

B)

```
router(config-if)# ip pim dense-mode
router(config)# ip pim rp-address 1.1.1.1
router(config)# ip pim rp listener
```

C)

```
router(config-if)# ip pim sparse mode
router(config)# ip pim bsr-candidate Lo0
router(config)# ip pim rp-candidate Lo0
```

D)

```
router(config-if)# ip pim sparse-sense mode
router(config)# ip pim auto-rp
router(config)# ip pim send-rp-announce
```

- A. Option A
- B. Option B
- C. Option C
- D. Option D

**Answer:** D

#### NEW QUESTION 99

An engineer needs to connect Cisco UCS Manager to an external storage array. Due to budget limitations, the engineer must connect a Cisco UCS manager directly to an FC storage port. Which two actions must be taken to complete this connection? (Choose two)

- A. Configure the fabric interconnect in FC switch mode
- B. Create a storage connection policy
- C. Set FC zoning to disabled when creating the VSAN
- D. Configure the fabric interconnect in end host mode
- E. Create the required VSAN in the SAN cloud

**Answer:** AC

#### NEW QUESTION 101

An engineer must implement a VXLAN-based data center interconnect. The long-distance transport provided by a service provider is IP-based, supports a maximum MTU of 1554 bytes, and does not support outbound traffic replication. Which action must be take to build the data center interconnect?

- A. Configure a route map to associate the IPs of the remote VTEPs.
- B. Create an IP access list and associate it with VNI to replicate traffic to remote VTEPs.
- C. Announce host reachability over BGP.
- D. Implement BGP EVPN ingress replication.

**Answer:** D

#### NEW QUESTION 102

Refer to the exhibit.

```
N5K-1 (config)#interface fc2/3
N5K-1 (config-if) #switchport mode sd
N5K-1 (config-if) # no shutdown
```

What is the result of implementing this configuration?

- A. The Fibre Channel interface is configured for synchronization distribution.
- B. The Fibre Channel interface is configured for SPAN.
- C. The Fibre Channel interface is configuration for source distribution.
- D. The Fibre Channel interface is configured for FSPF.

**Answer:** B

#### Explanation:

[https://www.cisco.com/c/en/us/td/docs/switches/datacenter/nexus5000/sw/san\\_switching/421\\_n1\\_1/b\\_Cisco\\_n5k\\_nxos\\_sanswitching\\_config\\_guide\\_rel421\\_n1\\_1/Cisco\\_n5k\\_nxos\\_sanswitching\\_config\\_guide\\_rel4](https://www.cisco.com/c/en/us/td/docs/switches/datacenter/nexus5000/sw/san_switching/421_n1_1/b_Cisco_n5k_nxos_sanswitching_config_guide_rel421_n1_1/Cisco_n5k_nxos_sanswitching_config_guide_rel4)  
[https://www.cisco.com/en/US/docs/switches/datacenter/nexus5000/sw/configuration/guide/cli\\_rel\\_4\\_1/Cisco\\_Nexus\\_5000\\_Series\\_Switch\\_CLI\\_Software\\_Configuration\\_Guide\\_chapter50.html](https://www.cisco.com/en/US/docs/switches/datacenter/nexus5000/sw/configuration/guide/cli_rel_4_1/Cisco_Nexus_5000_Series_Switch_CLI_Software_Configuration_Guide_chapter50.html)

#### NEW QUESTION 105

When a strict CoPP policy is implemented, which statement describes an event during which packets are dropped?

- A. Fifteen SSH sessions remain connected to the switch.
- B. A large system image is copied to a switch by using the default VRF.
- C. A ping sweep is performed on a network that is connected through a switch.
- D. A web server that is connected to a switch is affected by a DDoS attack.

**Answer: B**

**Explanation:**

A large image upload is more probable to generate that level of traffic.

15 SSH session would mean an average of 200pps per session, and they simply mention that the session remain connected, if there are no inputs in them they have 0pps and even a full config push would probably not require 200 packets total.

class copp-system-p-class-management set cos 2

police cir 3000 pps bc 32 packets conform transmit violate drop

[https://www.cisco.com/c/en/us/td/docs/switches/datacenter/nexus9000/sw/6-x/security/configuration/guide/b\\_Cisco\\_Nexus\\_9000\\_Series\\_NX-OS\\_Security\\_Configuration\\_Guide/b\\_Cisco\\_Nexus\\_9000\\_Series\\_NXOS\\_Security\\_Configuration\\_Guide\\_chapter\\_010001.html](https://www.cisco.com/c/en/us/td/docs/switches/datacenter/nexus9000/sw/6-x/security/configuration/guide/b_Cisco_Nexus_9000_Series_NX-OS_Security_Configuration_Guide/b_Cisco_Nexus_9000_Series_NXOS_Security_Configuration_Guide_chapter_010001.html)

**NEW QUESTION 108**

An engineer must implement an automation solution to allow the backup of the configuration of cisco Nexus series switches to a centralized location. The solution must:

- \* Support the team-developed custom monitoring scripts that are packaged using RPM packaging that the framework must support.
- \* Be developed from the underlying cisco Nexus operating system.
- \* Have no impact on the operating system of the underlying switch if the resource contention occurs.
- \* Use Python to expand the existing automation framework. Which solution meets these requirements?

- A. Guest Shell
- B. Bash Shell
- C. TCL Shell
- D. Vegas Shell

**Answer: A**

**NEW QUESTION 110**

Refer to the exhibit.

Which two Cisco UCS components are upgraded as a result of the configuration? (Choose two.)

- A. adapters
- B. board controller
- C. IOMs
- D. BIOS
- E. Cisco UCS Manager

**Answer: CE**

**Explanation:**

[https://www.cisco.com/c/en/us/td/docs/unified\\_computing/ucs/sw/firmware-mgmt/gui/2-2/b\\_GUI\\_Firmware\\_Management\\_22/b\\_GUI\\_Firmware\\_Management\\_22\\_chapter\\_0101.html](https://www.cisco.com/c/en/us/td/docs/unified_computing/ucs/sw/firmware-mgmt/gui/2-2/b_GUI_Firmware_Management_22/b_GUI_Firmware_Management_22_chapter_0101.html)

Infrastructure software bundle—This bundle is also called the A bundle. It contains the firmware images that the fabric interconnects, IO Modules, and Cisco UCS

Manager require to function.

Board controller is a server component included in the server bundle not the infrastructure bundle Graphical user interface, text, application, letter Description automatically generated



## Install Infrastructure Firmware

Install Infrastructure Firmware upgrades all infrastructure components in a Cisco UCS domain, including Cisco UCS Manager, and all fabric interconnects and I/O modules. All components are upgraded to the firmware version included in the selected Cisco UCS Infrastructure Software Bundle.

Install Infrastructure Firmware does not support a partial upgrade to only some infrastructure components in a Cisco UCS domain domain.

You can schedule an infrastructure upgrade for a specific time to accommodate a maintenance window. However, if an infrastructure upgrade is already in progress, you cannot schedule another infrastructure upgrade. You must wait until the current upgrade is complete before scheduling the next one.



**Note**

You can cancel an infrastructure firmware upgrade if it is scheduled to occur at a future time. However, you cannot cancel an infrastructure firmware upgrade after the upgrade has begun.

### NEW QUESTION 113

An engineer must implement protection against ICMP DoS attacks on a Cisco Nexus 9000 Series Switch. The requirement is to rate-limit ICMP without denying all other ICMP traffic. The ICMP traffic currently passing through the Cisco Nexus 9000 device must not be affected. Which configuration accomplishes these goals?

- A. Configure SNMP traps to send the ICMP notification if the CPU utilization is more than 90%.
- B. Reconfigure the Layer 3 interfaces to be in the non-default VRF and ICMP broadcast storm control
- C. Create an access list to deny ICMP traffic and apply it to all interlaces in the inside direction.
- D. Apply a control plane service policy that matches all ICMP traffic to drop the traffic fiat exceeds the threshold.

**Answer: D**

### NEW QUESTION 117

Drag and drop the fields for configuring a full state backup file of the Cisco UCS Manager from the left onto the descriptions on the right.

hostname	location where the backup file id stored
protocol	full path to the backup configuration file
remote file	binary file that includes a snapshot of the entire system
type	settings used to transfer the file to the backup server

- A. Mastered
- B. Not Mastered

**Answer: A**

#### Explanation:

Diagram Description automatically generated

### NEW QUESTION 119

Which two features are used to allow a nondisruptive upgrade for the ISSU process? (Choose two.)

- A. connectivity management processor
- B. nonstop forwarding
- C. graceful restart
- D. stateful switchover
- E. advanced services license

**Answer: BD**

### NEW QUESTION 122

Which two firmware packages are included in the Cisco UCS C-Series Rack-Mount UCS-Managed Server Software bundle? (Choose two.)

- A. system
- B. third-party



- C. PSU
- D. CIMC
- E. BIOS

**Answer:** DE

**Explanation:**

[https://www.cisco.com/c/en/us/td/docs/unified\\_computing/ucs/ucs-manager/GUI-User-Guides/Firmware-Mgmt/](https://www.cisco.com/c/en/us/td/docs/unified_computing/ucs/ucs-manager/GUI-User-Guides/Firmware-Mgmt/)

**Cisco UCS C-Series Rack-Mount UCS-Managed Server Software Bundle**

This bundle includes the following firmware images that are required to update components on rack-mount servers that have been integrated with and are managed by Cisco UCS Manager:

- CIMC firmware
- BIOS firmware
- Adapter firmware
- Storage controller firmware

**NEW QUESTION 126**

A network engineer is configuring the Cisco UCS service profile template with Ansible using this code.

```
hostname: 192.168.10.23
username: cisco
password: f718c4329405088301f6247ff982
name: DCE-CTRL
template_type: updating-template
uuid_pool: UUID-POOL
storage_profile: DCE-StgProf
maintenance_policy: default
server_pool: Container-Pool
host_firmware_package: 4.1(1a)
bios_policy: Docker
```

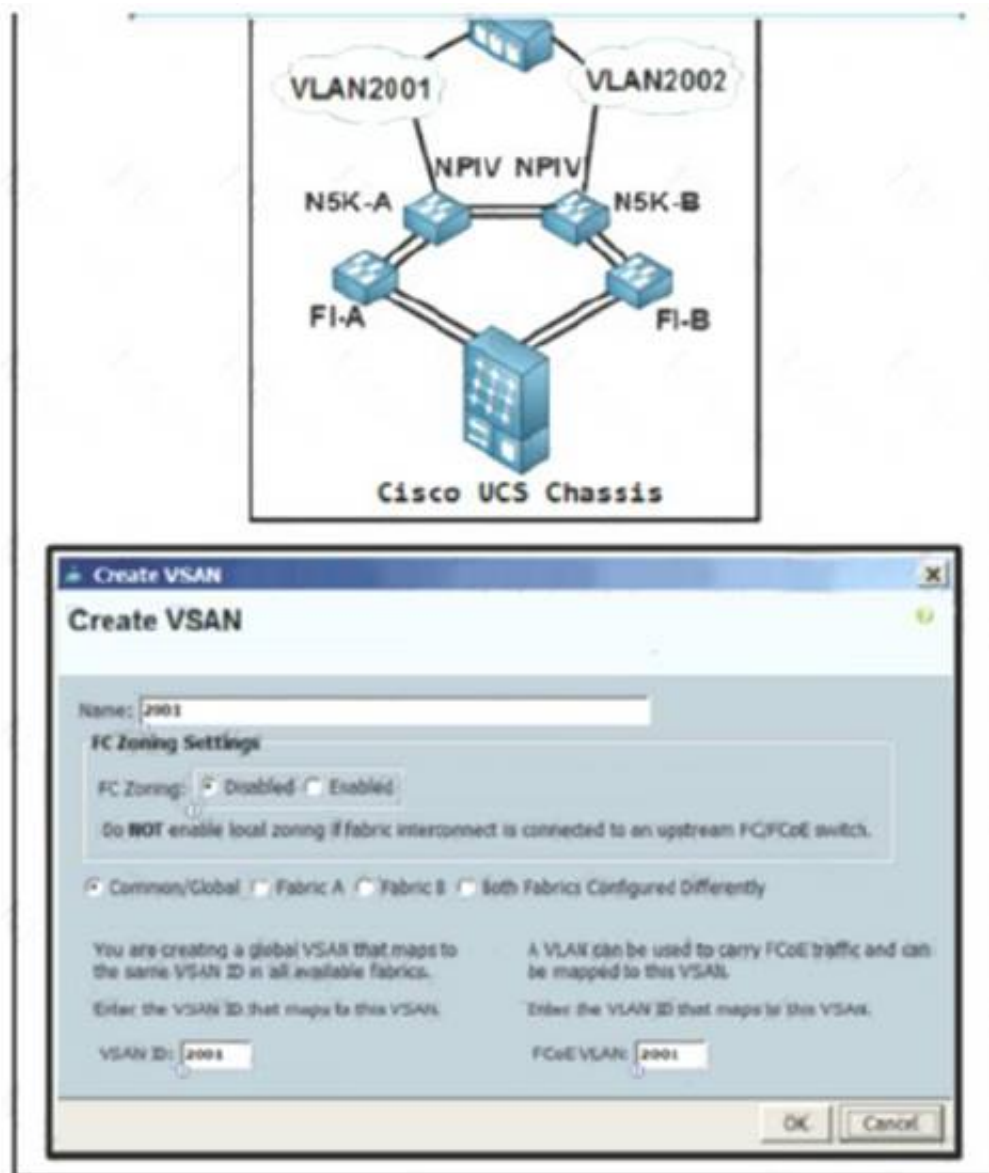
Which attribute must be used to apply the iSCSI initiator identifiers to all iSCSI vNICs for the service profiles derived from the service template?

- A. san\_connectivity\_policy
- B. iqn\_pool
- C. boot\_policy
- D. lan\_connectivrtty\_policy

**Answer:** B

**NEW QUESTION 131**

Refer to the exhibit.



An engineer is configuring a VSAN on the network Which option must be selected to create the VSAN?

- A. Fabric B
- B. FC Zoning Enabled
- C. Fabric A
- D. Common/Global

**Answer: C**

**Explanation:**

<https://www.cisco.com/c/en/us/td/docs/switches/datacenter/mds9000/sw/nx-os/configuration/guides/fabric/fabric>  
[https://www.cisco.com/c/en/us/td/docs/unified\\_computing/ucs/ucs-central/GUI-User-Guides/Storage-Mgmt/1-5/](https://www.cisco.com/c/en/us/td/docs/unified_computing/ucs/ucs-central/GUI-User-Guides/Storage-Mgmt/1-5/)

#### NEW QUESTION 133

Due to a major version change, an engineer must perform a software upgrade on a Cisco Nexus Series switch. Which two technologies can be implemented to reduce disruptions to the network during the upgrade? (Choose two.)

- A. MLAG
- B. HSRP
- C. PAgP
- D. VDC
- E. vPC

**Answer: BE**

#### NEW QUESTION 137

A customer requires a solution to orchestrate the configuration of storage arrays, firewalls, and Cisco ACI networking. Additionally, the orchestration product must support open automation and a service catalog. Which solution meets these requirements?

- A. Cisco UCS Director
- B. Cisco Intersight
- C. Cisco Data Center Network Manager
- D. Cisco Workload Optimization Manager

**Answer: C**

#### NEW QUESTION 142

An engineer must configure a Nexus 7000 series switch for HSRP on VLAN 100. When fully functional, the router must be the active master. Which set of commands must be used to implement the scenario?

```
feature hsrp
interface vlan100
ip address 10.1.1.2 255.255.255.0
priority 120
hsrp version 2
hsrp 1000
ip 10.1.1.1
```

```
feature hsrp
interface vlan100
ip address 10.1.1.2 255.255.255.0
priority 100
hsrp version 2
hsrp 1000
ip 10.1.1.1
```

```
feature-set hsrp
interface vlan100
ip address 10.1.1.2 255.255.255.0
priority 110
hsrp version 2
hsrp 1000
ip 10.1.1.1
```

```
feature-set hsrp
interface vlan100
ip address 10.1.1.2 255.255.255.0
priority 80
hsrp version 2
hsrp 1000
ip 10.1.1.1
```

- A. Option A
- B. Option B
- C. Option C
- D. Option D

**Answer:** A

#### NEW QUESTION 143

Which component is disrupted when the cisco integrated Management controller is upgraded on a cisco UCS series server?

- A. Cisco UCS Manager
- B. SAN traffic
- C. KVM sessions
- D. Data traffic

**Answer:** C

#### NEW QUESTION 144

An engineer updated firmware on Fabric Interconnects and activates it. However, the endpoint fails to boot from the new firmware image. What is expected to occur in this case?

- A. The system defaults to the backup image version
- B. The system defaults to and boots into GOLD firmware image
- C. The system defaults to the GOLD firmware image
- D. The system defaults to and boots into kickstart image

**Answer:** A

#### Explanation:

[https://www.cisco.com/c/en/us/td/docs/unified\\_computing/ucs/ucs-manager/CLI-User-Guides/Firmware-Mgmt/4-0/b\\_UCSM\\_CLI\\_Firmware\\_Management\\_Guide\\_4-0/b\\_UCSM\\_CLI\\_Firmware\\_Management\\_Guide\\_4-0\\_chapter\\_011.html](https://www.cisco.com/c/en/us/td/docs/unified_computing/ucs/ucs-manager/CLI-User-Guides/Firmware-Mgmt/4-0/b_UCSM_CLI_Firmware_Management_Guide_4-0/b_UCSM_CLI_Firmware_Management_Guide_4-0_chapter_011.html)

#### NEW QUESTION 149

Which command reduces the amount of time it takes to complete the ISSU on a Cisco Nexus 7000 series switch that has dual supervisor modules and two I/O modules?

- A. install all kickstart <image>system<image>parallel
- B. install all epld bootflash:<image>
- C. install all epld bootflash:<image>
- D. install all kickstart<image>system<image>

**Answer:** A

#### Explanation:

Graphical user interface, text, application Description automatically generated

## Parallel Upgrade

### Parallel Upgrade with I/O Modules

Starting with Cisco NX-OS Release 5.2(1), multiple linecards can be simultaneously upgraded, and the infrastructure support is available. This decreases the ISSU time when compared with an ISSU upgrade that is done serially (one card at a time).

To start a parallel upgrade, use the following command: `install all kickstart image system image parallel`

Up to three linecards can be upgraded in parallel with this command. During the upgrade process, the upgrade of the linecards is displayed in the output as follows:

```
Non-disruptive upgrading.
[#          ] 0%
Module 5 upgrade completed successfully.
```

```
Module 3 upgrade completed successfully.
```

[https://www.cisco.com/c/en/us/td/docs/switches/datacenter/nexus7000/sw/upgrade/guide/cisco\\_nexus7000\\_software\\_upgrade\\_and\\_downgrade\\_guide\\_8x.html](https://www.cisco.com/c/en/us/td/docs/switches/datacenter/nexus7000/sw/upgrade/guide/cisco_nexus7000_software_upgrade_and_downgrade_guide_8x.html)

[https://www.cisco.com/c/en/us/td/docs/switches/datacenter/sw/7\\_x/nx-os/upgrade/guide/b\\_Cisco\\_Nexus\\_7000\\_Series\\_NX-OS\\_Software\\_Upgrade\\_and\\_Downgrade\\_Guide\\_Release\\_7-x.html#d54e307a1635](https://www.cisco.com/c/en/us/td/docs/switches/datacenter/sw/7_x/nx-os/upgrade/guide/b_Cisco_Nexus_7000_Series_NX-OS_Software_Upgrade_and_Downgrade_Guide_Release_7-x.html#d54e307a1635)

### NEW QUESTION 152

What is required for using Ansible with HTTP/HTTPS protocol in a Cisco NX-OS environment?

- A. SSH
- B. Open Agent Container
- C. XML management interface
- D. NX-API

**Answer:** D

#### Explanation:

[https://docs.ansible.com/ansible/2.5/modules/nxos\\_nxapi\\_module.html](https://docs.ansible.com/ansible/2.5/modules/nxos_nxapi_module.html) [https://docs.ansible.com/ansible/latest/network/user\\_guide/platform\\_nxos.html](https://docs.ansible.com/ansible/latest/network/user_guide/platform_nxos.html)

### NEW QUESTION 155

The Cisco Nexus 5600 Series Switch experiences occasional packet drops on interface ethernet 1/16. An engineer wants to implement a SPAN session to investigate the issue further. The network analyzer to which the packets must be directed is located on interface 1/3. The analyzer is limited on disk space available for traffic capture, so the Nexus switch should send only the relevant data. Which two command sets configure the SPAN session that meets these requirements? (Choose two.)

- ☒ interface ethernet 1/3  
switchport monitor
- ☐ monitor session 2  
destination interface ethernet 1/3  
span interface ethernet 1/16
- ☐ interface ethernet 1/3  
switchport span
- ☒ span session 2  
type SPAN-on-DROP  
destination interface ethernet 1/3  
source interface ethernet 1/16
- ☒ monitor session 2 type SPAN-on-DROP  
destination interface ethernet 1/3  
source interface ethernet 1/16

- A. Option A
- B. Option B
- C. Option C
- D. Option D
- E. Option E

**Answer:** AE

#### Explanation:

<https://www.cisco.com/c/en/us/products/collateral/switches/nexus-5000-series-switches/white-paper-c11-73302> The information to be sent is regarding dropped packets only.

This configuration creates a SPAN session with type **SPAN-on-DROP**. In the following example, the source interface, where congestion may be present, is port e3/1. The destination port is e3/2, which must be in switchport monitor mode.

```
switch(config)# monitor session <session_number> type SPAN-on-DROP
switch(config-SPAN-on-DROP)# source interface e3/1
switch(config-SPAN-on-DROP)# destination interface e3/2
```



#### NEW QUESTION 156

A DNS server with IP address 192.168.1.1 is deployed in a data center. A network engineer must configure a Cisco UCS Fabric Interconnect to use this DNS. Which configuration should be applied?

- ☐ **Option A:**  

```
ficl-mgmt-A# scope system
ficl-mgmt-A /system # create dns 192.168.1.1
ficl-mgmt-A /system* # commit-buffer
```
- ☐ **Option B:**  

```
ficl-mgmt-A# scope fabric-interconnect a
ficl-mgmt-A /fabric-interconnect # set name 192.168.1.1
ficl-mgmt-A /fabric-interconnect # scope system
ficl-mgmt-A /system # commit-buffer
```
- ☐ **Option C:**  

```
ficl-mgmt-A# scope fabric-interconnect a
ficl-mgmt-A /fabric-interconnect # set name 192.168.1.1
ficl-mgmt-A /fabric-interconnect* # commit-buffer
```
- ☒ **Option D:**  

```
ficl-mgmt-A# scope system
ficl-mgmt-A /system # scope services
ficl-mgmt-A /system/services # create dns 192.168.1.1
ficl-mgmt-A /system/services* # commit-buffer
```

- A. Option A
- B. Option B
- C. Option C
- D. Option D

**Answer:** D

#### NEW QUESTION 159

What is a benefit of using Cisco Tetration?

- A. It collects telemetry data from servers and then uses software sensors to analyze flow information.
- B. It collects near-real time data from servers and inventories the software packages that exist on servers.
- C. It collects policy compliance data and process details.
- D. It collects enforcement data from servers and collects interpacket variation.

**Answer:** A

#### NEW QUESTION 163

Refer to the exhibit.

```
N7K-1
spanning-tree vlan 1-10 priority 8192

vpc domain 100
  role priority 100
  peer-keepalive destination 10.1.1.2 source 10.1.1.1
vrf default
  delay restore 60
  peer-switch
  auto-recovery
  ip arp synchronize

N7K-2
spanning-tree vlan 1-10 priority 8192

vpc domain 100
  role priority 200
  peer-keepalive destination 10.1.1.1 source 10.1.1.2
vrf default
  delay restore 60
  peer-switch
  auto-recovery
  ip arp synchronize
```

The STP priority of N7K-1 and N7K-2 are the lowest in the network. Which statement describes STP on the vPC?

- A. N7K-1 appears as the STP root.
- B. N7K-2 appears as the STP root.
- C. N7K-1 and N7K-2 appear as a single STP root.
- D. N7K-1 preempts N7K-2 as the STP root.

Answer: C

NEW QUESTION 168

The Cisco UCS blade chassis must send SNMPv3 traps to a network monitoring system. The SNMP trap messages should be authenticated and have protection from closure. Which SNMP security privileged level should be configured?

- A. noPriv
- B. auth
- C. noAuth
- D. priv

Answer: D

NEW QUESTION 173

An engineer must migrate a Cisco UCS C-Series server from Cisco SingleConnect to direct integration mode. The Cisco UCS Manager Rack Server Discovery Policy and Rack Management Connection Policy are set to immediate and Auto-Acknowledge. Which set of steps accomplishes this task?

- ☒ Disconnect the cables from the FEX.  
Connect the cables to appliance ports on the fabric interconnect.  
Reset the Cisco IMC of the server.
- ☐ Disconnect the cables from the FEX.  
Connect the cables to server ports on the fabric interconnect.  
Reset the Cisco IMC of the server.
- ☐ Disconnect the cables from the FEX.  
Connect the cables to appliance ports on the fabric interconnect.  
Reacknowledge the server.
- ☐ Disconnect the cables from the FEX.  
Connect the cables to server ports on the fabric interconnect.  
Reacknowledge the server.

- A. Option A
- B. Option B
- C. Option C
- D. Option D

Answer: D

NEW QUESTION 178

Which protocol does Cisco Hyperflex use to share data among nodes in a VMware vSphere environment?

- A. CIFS
- B. FCoE
- C. SMB
- D. NFS

Answer: D

NEW QUESTION 182

Drag and drop the characteristics from the left onto the correct storage systems on the right.

expensive and complex to manage

moderately expensive and simple to configure

most resilient, highly scalable, and high-performance storage

appliance providing file system access

lacks scalability, performance, and advanced features

NAS

SAN

- A. Mastered
- B. Not Mastered

Answer: A

**Explanation:**  
Graphical user interface Description automatically generated with medium confidence  
2,4,5 – NAS 1,3 - SAN

**NEW QUESTION 187**  
Drag and drop the steps on the left onto the order that they must be implemented on the right to recover a fabric interconnect when there is no working image on the bootflash.

Copy the main image files.	step 1
Configure the management interfaces.	step 2
Boot the kickstart image using TFTP.	step 3
Install the files.	step 4

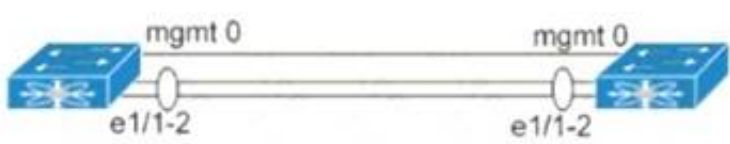
- A. Mastered
- B. Not Mastered

Answer: A

**Explanation:**

Copy the main image files.	Boot the kickstart image using TFTP.
Configure the management interfaces.	Configure the management interfaces.
Boot the kickstart image using TFTP.	Copy the main image files.
Install the files.	Install the files.

**NEW QUESTION 191**  
Refer to the exhibit.



```
hostname N9K-1
vpc domain 100
  role priority 100
  peer-keepalive destination 10.10.10.2
interface port-channel100
  switchport mode trunk
  spanning-tree port type network
  vpc peer-link
interface Ethernet1/1
  switchport mode trunk
interface Ethernet1/2
  switchport mode trunk
interface mgmt0
  vrf member management
  ip address 10.10.10.1/24
```

```
hostname N9K-2
vpc domain 100
  role priority 90
  peer-keepalive destination 10.10.10.1
interface port-channel100
  switchport mode trunk
  spanning-tree port type network
  vpc peer-link
interface Ethernet1/1
  switchport mode trunk
interface Ethernet1/2
  switchport mode trunk
interface mgmt0
  vrf member management
  ip address 10.10.10.2/24
```



Which action completes the vPC domain implementation?

- A. Allow VLANs on the vPC peer link member interfaces.
- B. Include the VRF management on the vPC domain.
- C. Configure the system MAC on the vPC domain.
- D. Add the vPC member ports to the vPC channel group.

**Answer:** D

#### NEW QUESTION 192

What is the impact of an EPLD upgrade on a Cisco MDS 9000 Series Switch?

- A. The active supervisor traffic is disrupted.
- B. The upgrade disrupts the management connectivity to the switch.
- C. The standby supervisor module reloads multiple times.
- D. The upgrade process disrupts only the module that is being upgraded.

**Answer:** D

#### NEW QUESTION 193

An engineer installed a new Nexus switch with the mgm0interface in vrf management. Connectivity to the rest of the network needs to be tested from the guest shell of the NX-OS. Which command tests connectivity from the shell of the NX-OS?

- ☐ [guestshell@guestshell ~]\$ ping 173.37.145.84 vrf management
- ☐ [guestshell@guestshell ~]\$ chvrf management ping 173.37.145.84
- ☒ [guestshell@guestshell ~]\$ iping vrf management ip 173.37.145.84
- ☐ [guestshell@guestshell ~]\$ dohost "ping vrf management 173.37.145.84"

- A. Option A
- B. Option B
- C. Option C
- D. Option D

**Answer:** B

#### NEW QUESTION 194

Which feature is supported with an In-Service Software Upgrade on a Cisco Nexus 9000 Series Switch?

- A. configuration changes during an upgrade
- B. nondisruptive upgrades via nonstop forwarding
- C. zero downtime downgrades via dual supervisor modules
- D. upgrades to Individual modules and line cards

**Answer:** B

#### NEW QUESTION 196

An engineer must configure Cisco IMC server management NIC for autonegotiation. Which setting should be selected?

- A. Cisco card
- B. shared LOM
- C. dedicated
- D. shared LOM EXT

**Answer:** C

#### Explanation:

[https://www.cisco.com/c/en/us/td/docs/unified\\_computing/ucs/c/sw/cli/config/guide/4\\_0/b\\_Cisco\\_UCS\\_CSeries\\_CLI\\_Configuration\\_Guide\\_40/b\\_Cisco\\_UCS\\_CSeries\\_CLI\\_Configuration\\_Guide\\_40\\_chapter\\_01000.html](https://www.cisco.com/c/en/us/td/docs/unified_computing/ucs/c/sw/cli/config/guide/4_0/b_Cisco_UCS_CSeries_CLI_Configuration_Guide_40/b_Cisco_UCS_CSeries_CLI_Configuration_Guide_40_chapter_01000.html)

<https://www.cisco.com/c/en/us/support/docs/servers-unified-computing/unified-computing-system/200221-Auto-negotiation-not-enabling-by-default.html>

#### NEW QUESTION 199

Refer to the exhibit.

#### Python Code:

```
import requests
import json

url='http://lab-93180bdlf-sw1/ins'
switchuser='dazfre'
switchpassword='Clscorox0'

myheaders={'content-type' : 'application/json'}
payload={
    "ins_api": {
        "version": "1.0",
        "type": "cli_show",
        "chunk": "0",
        "sid": "1",
        "input": "configure terminal : feature hsrp",
        "output_format": "json"
    }
}
response = requests.post(url,data=json.dumps(payload),
headers=myheaders,auth=(switchuser,switchpassword))

print(response.text)

ERROR MESSAGE
{
    "ins_api" : [
        {
            "type": "cli_show",
            "version": "1.0",
            "sid": "eoc",
            "outputs": [
                {
                    "output": [
                        {
                            "clierror": "% invalid command\n",
                            "input": "configure terminal",
                            "msg": "input CLI command error",
                            "code": "400"
                        },
                        {
                            "clierror": "% invalid command\n",
                            "input": "feature hsrp",
                            "msg": "input CLI command error",
                            "code": "400"
                        }
                    ]
                }
            ]
        }
    ]
}
```

Why does the python code for Cisco NX-API print an error message?

- A. The "type" is wrong in the header of the request and should be "cli\_conf".
- B. NX-API does not allow configuration for features via the requests module.
- C. The "type" is wrong in the body of the request and should be "cli\_conf".
- D. The JSON is not a supported format for the NX-API.

**Answer: C**

#### Explanation:

"Commands that belong to different message types should not be mixed. For example, show commands are cli\_show message type and are not supported in cli\_conf mode." [https://www.cisco.com/c/en/us/td/docs/switches/datacenter/nexus7000/sw/programmability/guide/cisco\\_nexus7000\\_programmability\\_guide\\_8x/b-cisco-nexus7000-programmability-guide-8x\\_chapter\\_011.html](https://www.cisco.com/c/en/us/td/docs/switches/datacenter/nexus7000/sw/programmability/guide/cisco_nexus7000_programmability_guide_8x/b-cisco-nexus7000-programmability-guide-8x_chapter_011.html)

the payload "type" value is wrong in the body of the request. For the request to be successful, it should be changes to "cli\_conf".

For example, if we run the same request with the updated payload:

```
{
  "ins_api": { "version": "1.0",
    "type": "cli_conf",
    "chunk": "0",
    "sid": "1",
    "input": "configure terminal ;feature hsrp", "output_format": "json"
  }
}
```

We get a 200 response:

```
{
  "ins_api": { "sid": "eoc",
    "type": "cli_conf",
    "version": "1.0", "outputs": {
      "output": [
        {
          "code": "200",
          "msg": "Success",
          "body": {}
        }
      ]
    }
  },
  {
    "code": "200",
```

```
"msg": "Success",
"body": {}
}
]
}
}
}
```

CLI verification: nxos9kv# sh run | inc hsrp feature hsrp

NEW QUESTION 202

Which virtualization feature is provided by network-attached storage?

- A. ALUA path redirection
- B. hypervisor host boot LUN
- C. VM cluster shared disk
- D. raw device passthrough

Answer: C

NEW QUESTION 205

An engineer must configure the HSRP protocol to implement redundancy using two Cisco Nexus Series Switches In addition, the HSRP must meet these requirements

- Switch1 must retain the primary role if switch2 goes offline
  - Switch1 must retain the primary role until normal conditions are restored.
  - Switch1 and switch2 must ensure that the routing tables are converged before taking the active role
  - switch2 must retain the primary role if the default gateway is not reachable
- Drag and drop the configuration commands from the right to the left to meet the requirements. The commands are used more than once Not all commands are used

```
! switch1
track 100 ip route 0.0.0.0/0 reachability

interface ethernet 1/1
ip 209.165.200.226/27

hsrp 200
ip 209.165.200.225
priority 210
[ ]
[ ]
no shutdown

! switch2
track 100 ip route 0.0.0.0/0 reachability

interface ethernet 1/1
ip 209.165.200.227/27

hsrp 200
ip 209.165.200.225
[ ]
[ ]
no shutdown
```

preempt delay minimum 30

track 100 decrement 200

track 200 decrement200

preempt sync 30

- A. Mastered
- B. Not Mastered

Answer: A

Explanation:



```
! switch1
track 100 ip route 0.0.0.0/0 reachability

interface ethernet 1/1
ip 209.165.200.226/27

hsrp 200
ip 209.165.200.225
priority 210
track 100 decrement 200
preempt delay minimum 30
no shutdown

! switch2
track 100 ip route 0.0.0.0/0 reachability

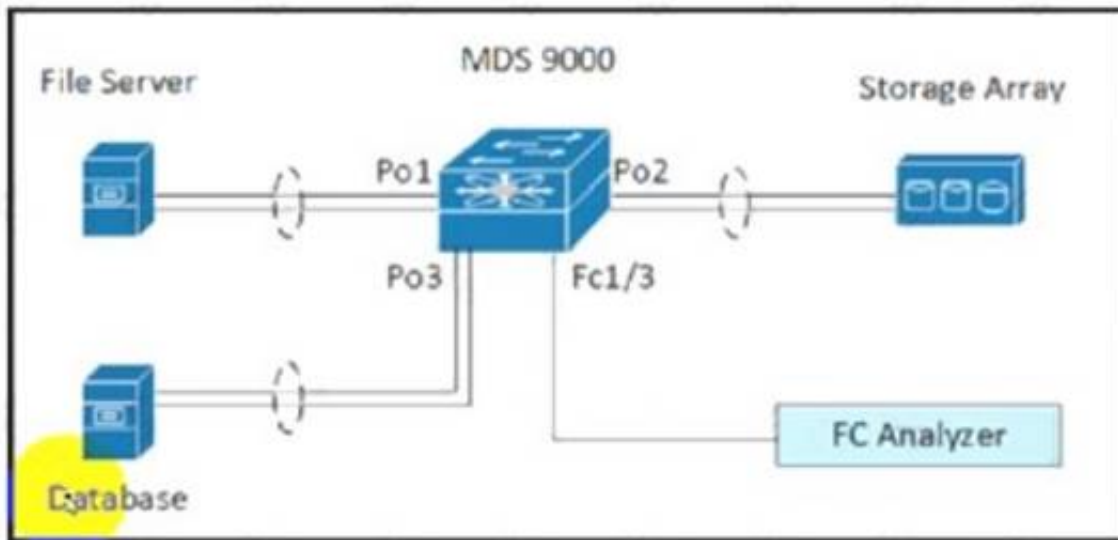
interface ethernet 1/1
ip 209.165.200.227/27

hsrp 200
ip 209.165.200.225
track 100 decrement 200
preempt delay minimum 30
no shutdown
```

```
preempt delay minimum 30
track 100 decrement 200
track 200 decrement 200
preempt sync 30
```

### NEW QUESTION 209

Refer to the exhibit.



```
interface port-channel 1
channel mode active
interface port-channel 2
channel mode active
interface fcl/1-2
channel-group 1
no shutdown
interface fcl/4-5
channel-group 2
no shutdown
interface fcl/7-8
channel-group 3
no shutdown
vsan database
vsan 100 name fabric1
vsan 100 interface port-channel 1
vsan 100 interface port-channel 2
vsan 100 interface port-channel 3
```

A storage engineer must monitor the traffic from the file server to the FC analyzer. The file server and the database use the same storage array. Which configuration must be applied to the Cisco MDS 9000 Series Switch to accomplish this goal?

- ☐ MDS-9000(config)# span session 1  
MDS-9000(config-span)# destination interface fc1/3  
MDS-9000(config-span)# source interface port-channel 1
- ☐ MDS-9000(config)# span session 1  
MDS-9000(config-span)# destination interface port-channel 2  
MDS-9000(config-span)# source interface vsan 100
- ☐ MDS-9000(config)# span session 1  
MDS-9000(config-span)# destination interface port-channel 2  
MDS-9000(config-span)# source interface fc1/1
- ☐ MDS-9000(config)# span session 1  
MDS-9000(config-span)# destination interface vsan 100  
MDS-9000(config-span)# source interface port-channel 1

A. Option A

- B. Option B
- C. Option C
- D. Option D

**Answer:** B

#### NEW QUESTION 214

The VMM domain is integrated between Cisco APICs and vCenter using a distributed vSwitch. The traffic must be blocked between a subset of endpoints in an EPG based on specific VM attributes and the rest of the VMs in that EPG. Which set of actions blocks this traffic?

- ☒ 1. Set Allow Microsegmentation under the EPG VMM Domain Association to "True"  
2. Set Intra-EPG Isolation to "Enforced" for the EPG  
3. Set Intra-EPG Isolation to "Enforced" for the uSeg EPG
- ☐ 1. Set Allow Microsegmentation under the EPG VMM Domain Association to "True"  
2. Set Intra-EPG Isolation to "Unenforced" for the EPG  
3. Set Intra-EPG Isolation to "Unenforced" for the uSeg EPG
- ☐ 1. Set Allow Microsegmentation under the EPG VMM Domain Association to "False"  
2. Set Intra-EPG Isolation to "Unenforced" for the EPG  
3. Set Intra-EPG Isolation to "Enforced" for the uSeg EPG
- ☐ 1. Set Allow Microsegmentation under the EPG VMM Domain Association to "True"  
2. Set Intra-EPG Isolation to "Enforced" for the EPG  
3. Set Intra-EPG Isolation to "Unenforced" for the uSeg EPG

- A. Option A
- B. Option B
- C. Option C
- D. Option D

**Answer:** A

#### NEW QUESTION 218

An administrator needs to configure an automated policy to shut down a link when a given threshold is exceeded on MDS switch. Which feature needs to be used?

- A. Scheduler
- B. RMON
- C. EEM
- D. Call Home

**Answer:** C

#### Explanation:

[https://www.cisco.com/c/en/us/td/docs/switches/datacenter/mds9000/sw/6\\_2/configuration/guides/interfaces/nx-os/cli\\_interfaces/intf.html](https://www.cisco.com/c/en/us/td/docs/switches/datacenter/mds9000/sw/6_2/configuration/guides/interfaces/nx-os/cli_interfaces/intf.html)

#### NEW QUESTION 223

A network engineer must configure a Cisco MDS switch to use the local user database for console access if all AAA servers are unreachable. Which configuration should be applied to complete this task?

- A. aaa authentication login default fallback error local
- B. aaa authentication login console fallback error local
- C. aaa authentication login default local
- D. aaa authentication login console local

**Answer:** B

#### NEW QUESTION 227

Several production and development database servers exist in the same EPG and IP subnet. The IT security policy is to prevent connections between production and development. Which attribute must be used to assign the servers to different microsegments?

- A. Data center
- B. VMM domain
- C. VM name
- D. IP address

**Answer:** C

#### Explanation:

[https://www.cisco.com/c/en/us/td/docs/switches/datacenter/aci/apic/sw/3-x/virtualization/b\\_ACI\\_Virtualization\\_](https://www.cisco.com/c/en/us/td/docs/switches/datacenter/aci/apic/sw/3-x/virtualization/b_ACI_Virtualization_)

**Example: Microsegmentation with Cisco ACI Within a Single EPG or Multiple EPGs in the Same Tenant**

You might assign web servers to an EPG so that you can apply the similar policies. By default, all endpoints within an EPG can freely communicate with each other. However, if this web EPG contains a mix of production and development web servers, you might not want to allow communication between these different types of web servers. Microsegmentation with Cisco ACI allows you to create a new EPG and autoassign endpoints based on their VM name attribute, such as "Prod-xxxx" or "Dev-xxx".

#### NEW QUESTION 229

Refer to the exhibit.

```
rollback running-config checkpoint system-fm-vpc output-omitted
```

A network engineer is implementing a configuration checkpoint on a Cisco Nexus 9000 Series Switch. The configuration must skip any existing vPC configuration errors and must complete if there are any configuration errors. The engineer finished the vPC domain configuration part. Which command completes the checkpoint implementation?

- A. stop-at-first-failure
- B. atomic
- C. best-effort
- D. verbose

**Answer:** C

#### NEW QUESTION 231

A network engineer must perform a backup and restore of the Cisco Nexus 5000 Series Switch configuration. The backup must be made to an external backup server. The only protocol permitted between the Cisco Nexus Series switch and the backup server is UDP. The backup must be used when the current working configuration of the switch gets corrupted. Which set of steps must be taken to meet these requirements?

- A. 1. Perform a running-config backup to an SFTP serve
- B. 2. Copy backup-config from the SFTP server to the running-config file.
- C. 1. Perform a startup-config backup to a TFTP serve
- D. 2. Copy backup-config from the backup server to the running-config file.
- E. 1. Perform a running-config backup to an SCP serve
- F. 2. Copy running-config in the boot flash to the running-config file.
- G. 1. Perform a startup-config backup to an FTP serve
- H. 2. Copy startup-config in the boot flash to the running-config file.

**Answer:** B

#### Explanation:

TFTP runs on UDP 69 = Is correct

#### NEW QUESTION 233

An engineer must recover the Cisco UCS system The full backup is available on a backup SCP server Which set of actions recovers the configuration of the Cisco UCS Manager?

- ☒ Copy the backup file to a USB drive.  
Copy the running-config.
- ☐ Create a scheduled restore job.  
Reboot the UCS Manager.
- ☐ Create an import-config task.  
Set the action to Replace.
- ☐ Factory reset the fabric interconnect.  
Select the Restore feature.

- A. Option A
- B. Option B
- C. Option C
- D. Option D

**Answer:** C

#### NEW QUESTION 237

A new user with access privileges in the Finance department moves to a new Admin department. The user must have access privileges to the Admin department data and applications inside the Cisco UCS Manager Which set of changes must be implemented in Cisco UCS Central for the user to acquire the privileges?

- A. Create an Admin user account and remove the authentication service for the Finance privileges.
- B. Disable the Finance user account and add the authentication service for the Admin privileges.
- C. Create a new locale Admin and add the Admin department to the Admin local
- D. Delete the old locale
- E. Finance and remove the Finance department from the Finance locale.

**Answer:** C

#### NEW QUESTION 242

Which two statements about the process of performing an EPLD upgrade on a Cisco MDS 9000 series Switch are true? (Choose two.)

- A. If an upgrade is interrupted, the upgrade continues after a connection is restored.
- B. The upgrade can be performed from the standby supervisor module.
- C. The active supervisor can be upgraded.
- D. Modules must be online to be upgraded.
- E. The Upgrade process disrupts only the module that is being upgraded.

**Answer:** DE



#### Explanation:

[https://www.cisco.com/c/en/us/td/docs/switches/datacenter/mds9000/sw/8\\_x/release\\_notes/epld/epld\\_rn\\_8x.htm](https://www.cisco.com/c/en/us/td/docs/switches/datacenter/mds9000/sw/8_x/release_notes/epld/epld_rn_8x.htm) Graphical user interface, text, application, email Description automatically generated

"On a Cisco Nexus 9500 platform switch that has two supervisor modules, upgrade the EPLDs for the standby supervisor and then switch the active supervisor to the standby mode to upgrade its EPLDs. The supervisor switchover is not disruptive to traffic on Cisco Nexus 9500 platform switches. On a switch that has only one supervisor module, you can upgrade the active supervisor, but this will disrupt its operations during the upgrade."

#### Guidelines and Limitations

When you upgrade or downgrade the EPLDs, observe the following guidelines and limitations:

- You can upgrade each module only when it is online. The EPLD upgrade is only disruptive to the module being upgraded.
- If you interrupt an EPLD upgrade or downgrade, the module must be upgraded again.
- In Cisco MDS 9000 Director Switches, EPLD upgrade or downgrade can only be executed from the active supervisor module. To upgrade the supervisor EPLDs nondisruptively, upgrade the standby supervisor and then switchover. After the new standby supervisor is online its EPLDs can be upgraded.
- In Cisco MDS 9000 Series Fabric Switches, be sure to specify 1 as the module number. The switch must be power cycled for the EPLDs to start running the new code.

Under Installation guidelines. [https://www.cisco.com/c/en/us/td/docs/switches/datacenter/nexus9000/sw/92x/epld-rn/nxos\\_n9K\\_epldRN\\_924.html](https://www.cisco.com/c/en/us/td/docs/switches/datacenter/nexus9000/sw/92x/epld-rn/nxos_n9K_epldRN_924.html)

#### NEW QUESTION 244

A network architect wants to propose a scalable network monitoring solution in which data is repeatedly acquired from network devices. The solution must use a push model and provide close to realtime access to operational data. Which technology must be used to meet these requirements?

- A. streaming telemetry
- B. logging
- C. SNMPv3
- D. CLI-based scripting

**Answer: A**

#### Explanation:

<https://blogs.cisco.com/developer/its-time-to-move-away-from-snmp-and-cli-and-use-model-driven-telemetry>

Why Model-Driven Telemetry?

Model-Driven Telemetry is a new approach for network monitoring in which data is streamed from network devices continuously using a push model and provides near real-time access to operational statistics. You can precisely define what data you want to subscribe to using standard YANG models (YANG is a data modeling language used to model configuration and state data manipulated by the NETCONF protocol) with no CLI required. It allows network devices to continuously stream real time configuration and operating state information to subscribers. Structured data is published at a defined cadence, or on-change, based upon the subscription criteria and data type.

#### NEW QUESTION 247

A storage engineer must configure zoning on a Cisco MDS 9000 Series switch. Drag and drop actions from the left into the order on right

zone name Zone1 vsan 4	Step 1
member pwwn 10:00:00:23:45:67:89:ac	Step 2
zoneset activate name Zoneset1 vsan 4	Step 3
member Zone1	Step 4
copy running-config startup-config	Step 5
zoneset name Zoneset1 vsan 4	Step 6

- A. Mastered
- B. Not Mastered

**Answer: A**

**Explanation:**

Graphical user interface, table Description automatically generated with medium confidence

```
Switch1# configure terminal
Enter configuration commands, one per line. End with CNTL/Z.

Switch1#(config)# vsan database
Switch1#(config-vsan-db)# vsan 100
Switch1#(config-vsan-db)# exit

Switch1#(config)# zone name zone1 vsan 100
Switch1#(config-zone)# member pwnn 11:11:11:11:11:11:11:1a
Switch1#(config-zone)# member pwnn 11:11:11:11:11:11:11:1b
Switch1#(config-zone)# exit

Switch1#(config)# zoneset name setA vsan 100
Switch1#(config-zoneset)# member zone1
Switch1#(config-zoneset)# exit

Switch1#(config)# zoneset activate name setA vsan 100
Zoneset activation initiated. check zone status
Switch1#(config)# exit

Switch1# sh zoneset active vsan 100
zoneset name setA vsan 100
zone name zone1 vsan 100
pwnn 11:11:11:11:11:11:11:1a
pwnn 11:11:11:11:11:11:11:1b
Switch1#
```

[https://www.cisco.com/c/en/us/td/docs/switches/datacenter/mds9000/sw/6\\_2/configuration/guides/fabric/nx-os/nx\\_os\\_fabric/zone.html](https://www.cisco.com/c/en/us/td/docs/switches/datacenter/mds9000/sw/6_2/configuration/guides/fabric/nx-os/nx_os_fabric/zone.html)

**NEW QUESTION 251**

An engineer changed a configuration and must perform a rollback. Which statement applies to a Cisco Nexus 5600 Series switch?

- A. Errors are skipped when an atomic rollback type is triggered.
- B. A user who is assigned to the network-operator user role can perform a rollback.
- C. The configuration rollback functionality is disabled when FCoE is enabled.
- D. A system checkpoint is generated automatically when the running configuration is saved to NVRAM.

**Answer: C**

**Explanation:**

[https://www.cisco.com/c/en/us/td/docs/switches/datacenter/nexus5000/sw/system\\_management/503\\_n1\\_1/cisco\\_n5k\\_system\\_mgmt\\_cg\\_rel\\_503\\_n1\\_1\\_chapter11.pdf](https://www.cisco.com/c/en/us/td/docs/switches/datacenter/nexus5000/sw/system_management/503_n1_1/cisco_n5k_system_mgmt_cg_rel_503_n1_1_chapter11.pdf)  
[https://www.google.com/url?sa=t&source=web&rct=j&url=https://www.cisco.com/c/en/us/td/docs/switches/datacenter/nexus5000/sw/system\\_management/503\\_n1\\_1/cisco\\_n5k\\_system\\_mgmt\\_cg\\_rel\\_503\\_n1\\_1\\_chapter11.pdf&ved=2ahUKEwjQ8ubTuK3xAhWm3jgGHZ9gB0oQFjAAegQIBRAC&usg=AOvVaw2j0nnvXiChAoVooxX2Qx0g](https://www.google.com/url?sa=t&source=web&rct=j&url=https://www.cisco.com/c/en/us/td/docs/switches/datacenter/nexus5000/sw/system_management/503_n1_1/cisco_n5k_system_mgmt_cg_rel_503_n1_1_chapter11.pdf&ved=2ahUKEwjQ8ubTuK3xAhWm3jgGHZ9gB0oQFjAAegQIBRAC&usg=AOvVaw2j0nnvXiChAoVooxX2Qx0g)

**NEW QUESTION 254**

A host EPG Client wants to talk to a webserver in EPG Web. A contract with default settings is defined between EPG Client and EPG Web, which allows TCP communication initiated by the client toward the webserver with TCP destination port 80. Which statement is true?

- A. If EPG Web is made a preferred group member, a contract between EPG Client and EPG Web is no longer required for the host in EPG Client to reach the webserver in EPG Web.
- B. If vzAny is configured to consume and provide a "deny all" contract, traffic between EPG Client and EPG Web is no longer allowed.
- C. The host in EPG Client is allowed to connect to TCP destination port 80 on the webserver in EPG Web. The webserver will not be allowed to initiate a separate TCP connection to a host port with TCP source port 80.
- D. The host in EPG Client is allowed to connect to TCP destination port 80 on the webserver in EPG Web. The webserver is allowed to initiate a separate TCP connection to a host port with TCP source port 80.

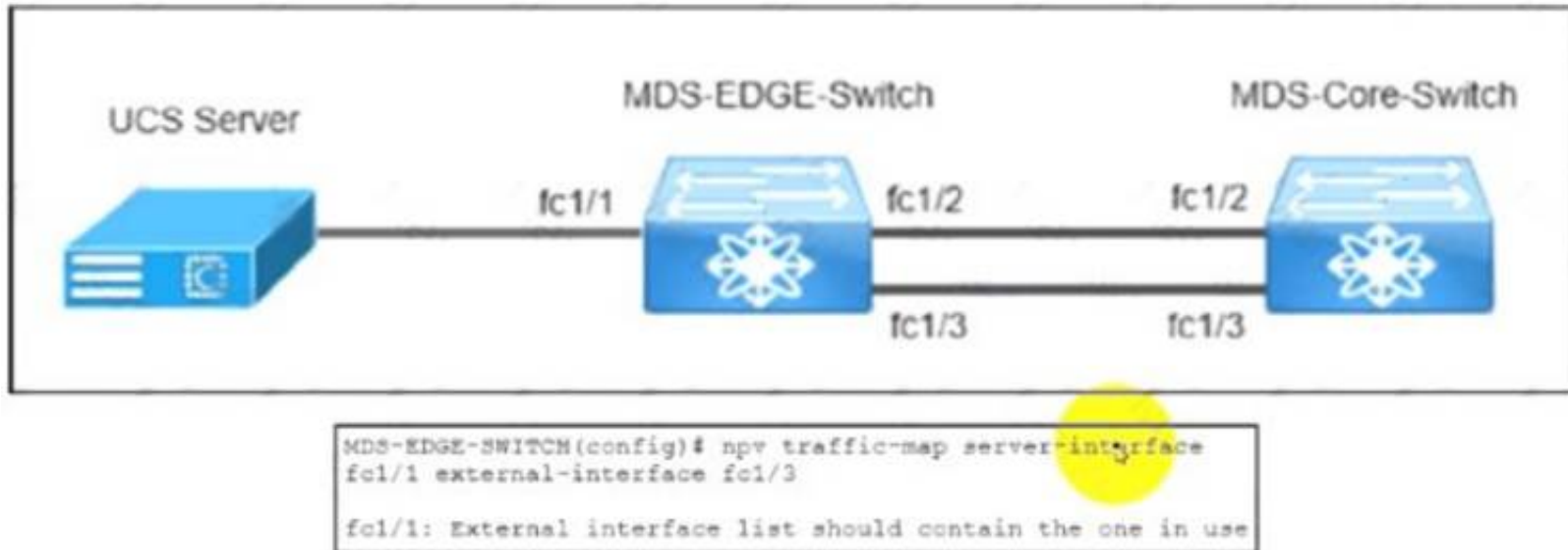
**Answer: D**

**Explanation:**

Apply Both Direction and Reverse Filter Port in the subject for the filter. These two options are by default enabled...This means that if the provider EPG initiates traffic toward the consumer EPG, the Cisco ACI fabric allows it for any destination ports if the source port is 80.  
[https://www.cisco.com/c/en/us/td/docs/switches/datacenter/aci/apic/sw/1-x/Operating\\_ACI/guide/b\\_Cisco\\_Operating\\_ACI/b\\_Cisco\\_Operating\\_ACI\\_chapter\\_01000.html](https://www.cisco.com/c/en/us/td/docs/switches/datacenter/aci/apic/sw/1-x/Operating_ACI/guide/b_Cisco_Operating_ACI/b_Cisco_Operating_ACI_chapter_01000.html) Reverse filter and apply in both directions is default.  
If a filter allows traffic from any consumer port to a provider port (e.g. 8888), if reverse port filtering is enabled and the contract is applied both directions (say for TCP traffic), either the consumer or the provider can initiate communication. The provider could open up a TCP socket to the consumer using port 8888, whether the provider or consumer sent traffic first. [https://www.cisco.com/c/en/us/td/docs/switches/datacenter/aci/apic/sw/1-x/Operating\\_ACI/guide/b\\_Cisco\\_Operating\\_ACI/b\\_Cisco\\_Operating\\_ACI\\_chapter\\_01000.html](https://www.cisco.com/c/en/us/td/docs/switches/datacenter/aci/apic/sw/1-x/Operating_ACI/guide/b_Cisco_Operating_ACI/b_Cisco_Operating_ACI_chapter_01000.html)

**NEW QUESTION 259**

Refer to the exhibit.



The MDS-EDGE-Switch and MDS-Core-Switch are configured with NPV and NPIV features. The FLOGI from Cisco UCS is received by the MDS-Core-Switch on interface fc1/2. An engineer tried to move all traffic between the MDS-EDGE-Switch and MDS-Core-Switch from interface fc 1/2 to fc1/3, but the attempt failed. Which set of actions completes the configuration?

- ☐ Disable the NPV feature in the MDS-EDGE-Switch.  
Re-enable the NPV feature.  
Disable interface fc1/1.
- ☐ Disable the NPIV feature in the MDS-EDGE-Switch.  
Re-enable the NPIV feature.  
Disable interface fc1/3.
- ☐ Shut down fc1/1 in the MDS-EDGE-Switch.  
Re-apply the command.  
Enable interface fc1/1.
- ☒ Shutdown fc1/3 in the MDS-EDGE-Switch.  
Re-apply the command.  
Enable interface fc1/3.

- A. Option A
- B. Option B
- C. Option C
- D. Option D

**Answer: C**

#### NEW QUESTION 262

Refer to the exhibit.

```

monitor fabric session mySession
description "This is my fabric ERSPAN session"
destination tenant t1 application appl epg epg1 destination-ip 192.0.20.123 source-ip-prefix 10.0.20.1
erspan-id 100
ip dscp 42
ip ttl 16
mtu 9216
exit
source interface eth 1/1 switch 101
direction tx
filter tenant t1 bd bd1
filter tenant t1 vrf vrf1
no shut
    
```

An engineer needs to implement a monitoring session that should meet the following requirements:

- Monitor traffic from leaf to leaf switches on a Cisco ACI network
- Support filtering traffic from Bridge Domain or VRF

Which configuration must be added to meet these requirements?

- A. interface eth 1/2 switch 101
- B. interface eth 1/2 leaf 101
- C. filter tenant t1 application app1 epg epg1
- D. application epg epg1 app1

**Answer: C**

#### NEW QUESTION 266

An engineer must configure the remote SSH management connectivity for Cisco Nexus 9000 Series Switches to meet these requirements:

- The connectivity must be permitted from a jump host with an IP address of 10.10.10.10/24



➤ All switches must be permitted to connect via SSH to other devices from the subnet of 10.20.20.0/24. Which configuration set accomplishes these requirements?

- ☒ line vty  
ip access-class acl-1 out  
ip access-class acl-2 in
- ip access-list acl-1  
permit ip 10.10.10.10/32 any  
ip access-list acl-2  
permit tcp 10.20.20.0/32 any
- ☐ line vty  
ip access-class acl-1 in  
ip access-class acl-2 out
- ip access-list acl-1  
permit tcp 10.10.10.10/32 any eq 22  
ip access-list acl-2  
permit tcp 10.20.20.0/24 any
- ☐ line vty  
ip access-class acl-1 in  
ip access-class acl-2 in
- ip access-list acl-1  
permit ip 10.10.10.10/32 any  
ip access-list acl-2  
permit tcp 10.20.20.0/32 any
- ☐ line vty  
ip access-class acl-1 in  
ip access-class acl-2 in
- ip access-list acl-1  
permit tcp 10.10.10.10/32 any eq 22  
ip access-list acl-2  
permit tcp 10.20.20.0/24 any

- A. Option A  
B. Option B  
C. Option C  
D. Option D

**Answer: B**

#### NEW QUESTION 267

An engineer must perform an initial configuration of VXLAN Tunnel End-Point functionality on the Cisco Nexus 9000 Series platform. All the necessary features are already enabled on the switch. Which configuration set must be used to accomplish this goal?

- ☐ NX9K(config)# interface loopback0  
NX9K(config-if)# ip address 10.10.10.11/32  
  
NX9K(config)# interface overlay0  
NX9K(config-if-overlay)# source-interface loopback0  
  
NX9K(config)# interface VLAN10  
NX9K(config-if-nve)# source-interface loopback0
- ☐ NX9K(config)# interface loopback0  
NX9K(config-if)# ip address 10.10.10.11/32  
  
NX9K(config)# interface tunnel1  
NX9K(config-if)# tunnel source loopback0  
  
NX9K(config)# interface ethernet1/1  
NX9K(config-if)# ip unnumbered loopback0
- ☐ NX9K(config)# interface loopback0  
NX9K(config-if)# ip address 10.10.10.11/32  
  
NX9K(config)# interface nve1  
NX9K(config-if-nve)# source-interface loopback0  
  
NX9K(config)# interface ethernet1/1  
NX9K(config-if)# ip unnumbered loopback0
- ☐ NX9K(config)# interface loopback0  
NX9K(config-if)# ip address 10.10.10.11/32  
  
NX9K(config)# interface VLAN10  
NX9K(config-if)# ip unnumbered loopback0  
  
NX9K(config)# interface nve1  
NX9K(config-if-nve)# source-interface loopback0

- A. Option A
- B. Option B
- C. Option C
- D. Option D

**Answer:** D

#### NEW QUESTION 270

A network architect must redesign a data center on OSPFv2. The network must perform fast reconvergence between directly connected switches. Which two actions must be taken to meet the requirement? (Choose two)

- A. Configure all links on AREA 0.
- B. Implement a virtual link between the switches.
- C. Use OSPF point-to-point links only.
- D. Set low OSPF hello and DEAD timers.
- E. Enable BFD for failure detection.

**Answer:** CD

#### NEW QUESTION 272

An engineer must ensure fabric redundancy when implementing NPV mode on a Cisco MDS 9000 Series Switch. Which action enables fabric redundancy?

- A. Connect the NPV devices to multiple upstream switches.
- B. Add a port channel to upstream switches.
- C. Configure the NPV devices to use on external FLOGI database.
- D. Use TE ports to connect to upstream switches.

**Answer:** B

#### NEW QUESTION 274

Refer to the exhibit.

```
vlan 10
 fcoe vsan 10

interface ethernet 1/3
 spanning-tree port type edge trunk
 switchport mode trunk
 switchport trunk allowed vlan 1, 10
```

An engineer must configure FCoE on a Cisco Nexus switch. Which two command sets complete this configuration? (Choose two.)

- ☒ **interface vfc 10**  
     bind interface fcoe-vfc 1/3  
     no shut
- ☐ **vsan database**  
     vsan 10 interface ethernet 1/3
- ☒ **interface fcoe 10**  
     bind interface ethernet 1/3  
     no shut
- ☐ **interface vfc 10**  
     bind interface ethernet 1/3  
     no shut
- ☐ **vsan database**  
     vsan 10 interface vfc 10

- A. Option A
- B. Option B
- C. Option C
- D. Option D
- E. Option E

**Answer: DE**

**Explanation:**

```
switch# configure terminal
```

```
switch(config)# vsan database
```

```
switch(config-vsan)# vsan 2 interface vfc 4
```

This example shows how to bind a virtual Fibre Channel interface to an Ethernet interface:

```
switch# configure terminal
```

```
switch(config)# interface vfc 4
```

```
switch(config-if)# bind interface ethernet 1/4
```

[https://www.cisco.com/c/en/us/td/docs/switches/datacenter/nexus5000/sw/fcoe/421\\_n1\\_1/b\\_Cisco\\_n5k\\_fcoe\\_config\\_gd\\_re\\_421\\_n1\\_1/Cisco\\_n5k\\_fcoe\\_config\\_gd\\_re\\_421\\_n1\\_1\\_chapter4.html](https://www.cisco.com/c/en/us/td/docs/switches/datacenter/nexus5000/sw/fcoe/421_n1_1/b_Cisco_n5k_fcoe_config_gd_re_421_n1_1/Cisco_n5k_fcoe_config_gd_re_421_n1_1_chapter4.html)

#### NEW QUESTION 275

Refer to the exhibit.

```
event manager applet local-backup
 event cli match "copy running-config startup-config"
 action 1 cli copy [ ] bootflash:/
 current_config.txt
 action 2 syslog msg Configuration saved and copied to
 bootflash
 action 3 event-default
```

A network engineer must create an EEM script that saves a copy of the running configuration to bootflash and writes a message to syslog when a user saves the configuration to a Cisco Nexus 9000 Series Switch. Which command completes the configuration set?

- A. running-config
- B. policy-default
- C. syslog-config
- D. event-default

**Answer:** A

#### NEW QUESTION 280

An engineer implements an ACI fabric and must implement microsegmentation of endpoints within the same IP subnet using a network-based attribute. The attribute mapping must allow IP subnet independence. Which attribute must be selected?

- A. MAC address
- B. Custom
- C. Tag
- D. IP

**Answer:** D

#### Explanation:

If you want to use a network-based attribute and classify IP addresses in the same subnet, you must use the MAC-based network attribute. IP-based microsegmented EPGs do not support classification for IP addresses in the same subnet.

[https://www.cisco.com/c/en/us/td/docs/switches/datacenter/aci/apic/sw/3-x/virtualization/b\\_ACI\\_Virtualization\\_](https://www.cisco.com/c/en/us/td/docs/switches/datacenter/aci/apic/sw/3-x/virtualization/b_ACI_Virtualization_)

#### NEW QUESTION 285

An engineer must use the Embedded Event Manager to monitor events that occur on a cisco Nexus 9000 series switch. An environment variable needs to be created so that several policies use the monitored events in in their actions. The external email server is represented by IP address 10.10.10.10. which command sets the environment variable?

- A. N9k2(config)# event manager policy environment mallserver "10.10.10.10"
- B. N9k2# event manager environment mallserver "10.10.10.10"
- C. N9k2 (config-apple1)# environment mallserver "10.10.10.10"
- D. N9k2 (config)# event manager environment mallserver "10.10.10.10"

**Answer:** D

#### Explanation:

To set an Embedded Event Manager (EEM) environment variable, use the event manager environment command in global configuration mode. To disable an EEM environment variable, use the no form of this command. <https://www.cisco.com/c/en/us/td/docs/ios-xml/ios/eem/command/eem-cr-book/eem-cr-e1.html>

#### NEW QUESTION 286

What is a benefit of independent resource scaling in Cisco HyperFlex hybrid architecture?

- A. flexible expansion of compute, caching, and capacity
- B. remote booting of converged servers
- C. multivendor converged node hardware support
- D. support for compute nodes with third-party storage

**Answer:** D

#### NEW QUESTION 287

An engineer is seeking the most optimal on demand CPU performance while configuring the BIOS settings of a UCS C-series rack mount server. What setting will accomplish this goal?

- A. C0/C1 state
- B. C6 Retention
- C. C2 state
- D. C6 non-Retention

**Answer:** B

#### NEW QUESTION 288

A Cisco UCS C-Series server is installed at a data center. The server should be managed by the Cisco UCS Manager by using a single cable for management and data traffic. Which configuration should be applied after the Physical connection is established?

- A. UCS-A# scope server 1 UCS-A /server# scope cimcUCS-A /server/cimc # scope mgmt-conn sidebandUCS-A /server/cimc # mgmt-conn-state enabled UCS-A /server/cimc/mgmt-conn\* # commit-buffer
- B. UCS-A# scope chassis 1 UCS-A /chassis# scope cimcUCS-A /chassis/cimc # scope mgmt-conn sidebandUCS-A /chassis/cimc/mgmt-conn # mgmt-conn-state enabled UCS-A /chassis/cimc/mgmt-conn\* # commit-buffer
- C. UCS-A# scope chassis 1 UCS-A /chassis# scope cimcUCS-A /chassis /cimc # set mgmt-conn-state enabled UCS-A /chassis /cimc/mgmt-conn\* # commit-buffer
- D. UCS-A# scope server 1 UCS-A /server# scope cimcUCS-A /server/cimc # scope mgmt-conn sidebandUCS-A /server/cimc/mgmt-conn #set mgmt-conn-state enabled UCS-A /server/cimc/mgmt-conn\* # commit-buffer

**Answer:** D

#### Explanation:

Example

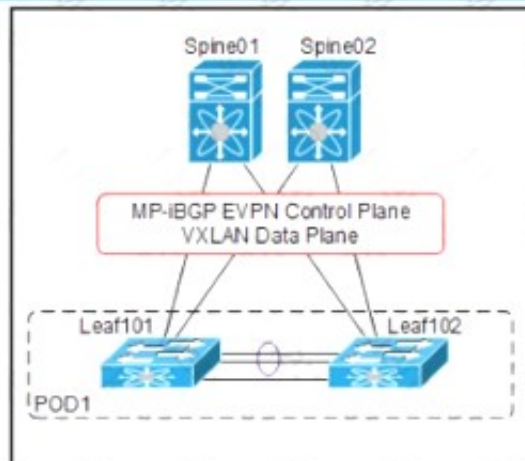
UCS-A# scope server 1 UCS-A /server # scope cimc



```
UCS-A /server/cimc # scope mgm
UCS-A /server/cimc # scope mgmt-conn
UCS-A /server/cimc # scope mgmt-conn sideband
UCS-A /server/cimc/mgmt-conn # set mgmt-conn-state enabled UCS-A /server/cimc/mgmt-conn* # commit-buffer
UCS-A /server/cimc/mgmt-conn
https://www.cisco.com/c/en/us/td/docs/unified_computing/ucs/c-series_integration/ucsm3-1/b_C-Series-Integration_UCSM3-1/b_C-Series-Integration_UCSM3-1_chapter_010.html
```

#### NEW QUESTION 289

Refer to the exhibit.



```
SPINE-01#show run pim
ip pim rp-address 10.255.0.100 group-list 225.0.0.0/8
ip pim bsr rp-candidate loopback1 group-list 225.0.0.0/8
ip pim ssm range 232.0.0.0/8
ip pim anycast-rp 10.255.0.100 10.10.0.1
ip pim anycast-rp 10.255.0.100 10.10.0.2
!
!
SPINE-01#show run interface loopback1
interface loopback1
ip router ospf 1 area 0.0.0.0
ip pim sparse-mode
```

An engineer must implement VXLAN with anycast gateway. To accomplish this, an engineer must set up PIM Source-Specific Multicast for host reachability. Which IP address must be applied to interface loopback1 to accomplish this goal?

- A. 255.0.0.1/8
- B. 255.0.100
- C. 10.10.0.1/32
- D. 10.10.0.2/32

**Answer: B**

#### NEW QUESTION 291

A customer data center experiences bandwidth contention that affects the servers connected to the NPV enabled switch. The NPV switch is connected to the NPV switch using two 10 Gb uplinks, but the traffic originating from the connected hosts to the core switch exceeds the available bandwidth. The engineers decided to add a third uplink to the NPV server to increase the available bandwidth. Which set of commands must be used to provision the new uplink?

- Ⓐ switch2(config)# npv auto-load-balance disruptive
  - ! uplink to NPV Core
  - switch2(config-if)# switchport mode np
- Ⓑ switch2(config)# port-channel load-balance ethernet source-dest-port
  - ! uplink to NPV Core
  - switch2(config-if)# switchport mode np
- Ⓒ switch2(config)# npv traffic-map server-interface
  - ! uplink to NPV Core
  - switch2(config-if)# switchport mode npiv
- Ⓓ switch2(config)# npv auto-load-balance
  - ! uplink to NPV Core
  - switch2(config-if)# switchport mode npiv

- A. Option A
- B. Option B
- C. Option C
- D. Option D

**Answer: B**

#### NEW QUESTION 294

An engineer is automating a Cisco Nexus 9000 Series Switch using the NX-OS API. Which code snippet creates a local user called "tacuser" with an expiration date of 22 November?

A)

☐ POST http://10.91.12.14/api/mo/sys/userext.json

```
{
  "aaaUserEp": {
    "children": [
      {
        "aaaUser": {
          "attributes": {
            "allowExpired": "no",
            "expiration": "2021-11-22T00:00:00.000+00:00",
            "expires": "yes",
            "name": "tacuser",
            "pwd": "AKw47PS3:g4M410:Fs01",
            "pwdEncryptType": "clear"
          }
        }
      }
    ]
  }
}
```

B)

☐ GET http://10.12.14.91/api/mo/sys/userext/user-tacuser.json

```
{
  {
    "aaaUserEp": {
      "attributes": {
        "childAction": "add",
        "dn": "sys/userext",
        "lcOwn": "local",
        "modTs": "2021-11-22T00:00:00.000+00:00",
        "pwdSecureMode": "yes",
        "pwdStrengthCheck": "no",
        "status": "",
        "uid": "0"
      }
    }
  }
}
```

C)



- A. Option A
- B. Option B
- C. Option C

**Answer:** A

#### NEW QUESTION 295

An engineer needs a utility to translate traditional Nexus CLI inputs and generate Python code using XML and JSON message formats. The solution needs to be available on a Nexus 7700 series switch. Which utility should be used?

- A. NX-OS JSON-RPC
- B. NX-API Sandbox
- C. Guest Shell for NX-OS
- D. Open NX-OS

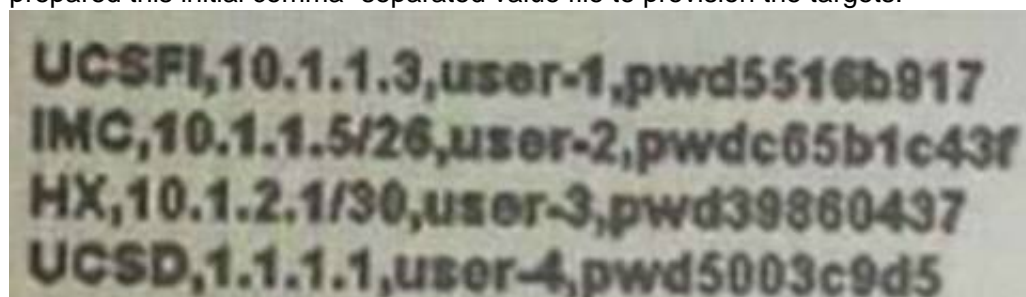
**Answer:** B

#### Explanation:

<https://developer.cisco.com/docs/nx-os/#!nx-api-cli-developer-sandbox>

#### NEW QUESTION 296

An engineer configures an intersight virtual application and must claim over 200 targets. The engineer starts the Claim target procedure. The engineer has prepared this initial comma-separated value file to provision the targets:



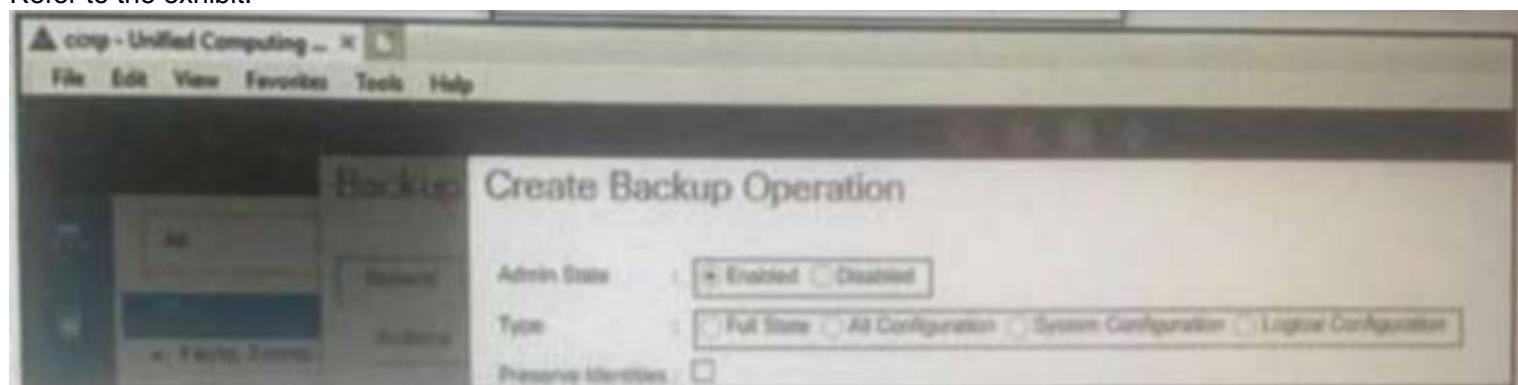
Which Information must be included In the comma-separated value flit to provision the targets?

- A. FQON, AD name, IP address, email
- B. location, address, nam
- C. password
- D. certificate, user name, passwor
- E. email
- F. target type, hostname or P address, user name, password

**Answer:** A

### NEW QUESTION 300

Refer to the exhibit.



Which backup operation type not include the preserve identities feature?

- A. Full state
- B. Logical configuration
- C. System configuration
- D. All configuration

**Answer: A**

### NEW QUESTION 301

An engineer is converting a Cisco MDS switch to support NPIV mode. What should be considered when implementing the solution?

- A. It must be enabled on VSAN 1 only.
- B. It must be enabled globally on all VSANs.
- C. It requires mapping of external interface traffic.
- D. It requires the FLOGI database to be disabled.

**Answer: B**

**Explanation:**

[https://www.cisco.com/c/en/us/td/docs/switches/datacenter/mds9000/sw/5\\_0/configuration/guides/int/nxos/cli\\_i](https://www.cisco.com/c/en/us/td/docs/switches/datacenter/mds9000/sw/5_0/configuration/guides/int/nxos/cli_i)

### NEW QUESTION 305

A customer has a requirement to deploy a cloud service and needs to have full control over the underlying OS, data and application. Which cloud model meets this requirement?

- A. PaaS
- B. MaaS
- C. IaaS
- D. SaaS

**Answer: C**

**Explanation:**

Traditional IT is responsible for Application, Data, Runtime, Middleware, OS, Virtualization, Servers, Storage, Networking. IaaS = Infrastructure as a Service - is responsible for OS, Virtualization, Servers, Storage, Networking. SaaS = Software as a Service - Software deployed by the cloud provider - is responsible for nothing. PaaS = Platform as a Service - Software can be deployed by the customer building their own application | is responsible for Data and Application.

### NEW QUESTION 310

Refer to the exhibit.

```
NEXUS# configure terminal
NEXUS# locator-led fex 100
NEXUS(config)# feature fex
NEXUS(config)# fex 100
NEXUS(config-fex)# type N2232TM
NEXUS(config-fex)# serial JAF1427BQLG
NEXUS(config)# interface ethernet 1/24-32
NEXUS(config-if)# switchport
NEXUS(config-if)# switchport mode fex-fabric
NEXUS(config-if)# fex associate 100
NEXUS(config-if)# no shutdown

NEXUS # show fex 100 detail
FEX: 100 Description: FEX0100 state: Online
  FEX version: 5.0(2)N1(1) [Switch version: 5.0(2)N1(1)]
  FEX Interim version: 5.0(2)N1(0.205)
  Switch Interim version: 5.0(2)N1(0.205)
  Extender Model: N2K-C2232TM, Extender Serial: JAF1427BQLG
  Part No: 73-13373-01
  Card Id: 132, Mac Addr: 68:ef:bd:62:2a:42, Num Macs: 64
  Module Sw Gen: 21 [Switch Sw Gen: 21]
  post level: complete
  pinning-mode: static    Max-links: 1
  Fabric port for control traffic: Eth1/29
  Fabric interface state:
    Eth1/25 - Interface Up. State: Active
    Eth1/26 - Interface Up. State: Active
    Eth1/27 - Interface Up. State: Active
    Eth1/28 - Interface Up. State: Active
    Eth1/29 - Interface Up. State: Active
    Eth1/30 - Interface Up. State: Active
    Eth1/31 - Interface Up. State: Active
    Eth1/32 - Interface Up. State: Active
```

An engineer must distribute all the host ports to use all eight configured FEX uplinks. The solution must minimize disruption if an uplink fails Which action accomplishes this objective?

- A. Set the pinning max-links value to 8
- B. Statically assign each host interface to a fabric uplink
- C. Change the supported FEX type



D. Configure the eight uplinks in a port channel

Answer: D

Explanation:

Traffic disruption should be minimised when an uplink fails. If pinning was used and an uplink failed, then traffic associated with the failed link would be disrupted until it could be re-routed. Using a port-channel is much less disruptive.

NEW QUESTION 313

A company plans to deploy a Cisco HyperFlex solution for data-intensive applications and databases The proposed solution should offer the highest performance with high consistency and low latency Which Cisco HyperFlex storage configuration should be used?

- A. All-HDD
- B. All-NVMe
- C. All-Flash
- D. Hybrid

Answer: B

NEW QUESTION 316

An engineer is implementing security on the Cisco MDS 9000 switch. Drag drop the descriptions from the left onto the correct security features on the right.

can be distributed via fabric services

uses the Exchange Fabric Membership Data protocol

allows a preconfigured set of Fibre Channel devices to logically connect to SAN ports

prevent unauthorized switches from joining the fabric or disrupting current fabric operations

Fabric Binding

Target 1

Target 2

Port Security

Target 3

Target 4

- A. Mastered
- B. Not Mastered

Answer: A

Explanation:

can be distributed via fabric services

uses the Exchange Fabric Membership Data protocol

allows a preconfigured set of Fibre Channel devices to logically connect to SAN ports

prevent unauthorized switches from joining the fabric or disrupting current fabric operations

Fabric Binding

prevent unauthorized switches from joining the fabric or disrupting current fabric operations

uses the Exchange Fabric Membership Data protocol

Port Security

can be distributed via fabric services

allows a preconfigured set of Fibre Channel devices to logically connect to SAN ports

NEW QUESTION 321

Refer to the exhibit.

```
import time
import cli

date= time.strftime('%Y%m%d')
file= ('fusion-config_') + date
cli.execute ('copy running-config ftp://10.183.249.182/FusionSW/' + file)
exit()
```

What is the result of executing this python code?

- A. It backs up Cisco switches to Cisco Prime infrastructure.

- B. It sends the switch configuration to Cisco TAC.
- C. It sends a Cisco device backup to a remote destination.
- D. It schedules a backup on a Cisco switch using EEM.

**Answer: C**

#### NEW QUESTION 326

An engineer must generate a Cisco UCS Manager backup. The backup should include all logical configuration and contain all system and logical configuration settings. Which backup type should be selected to meet these requirements?

- A. system configuration
- B. logical configuration
- C. all configuration
- D. full state

**Answer: C**

#### NEW QUESTION 331

An engineer is performing an ISSU upgrade on the Cisco MDS 9000 Series Switch. What is the impact on the control plane of the switch?

- A. It remains down until the next reboot.
- B. It remains up throughout the update.
- C. It remains down for more than 80 seconds but less than 140 seconds.
- D. It is down for less than 80 seconds.

**Answer: D**

#### NEW QUESTION 334

Refer to the exhibit.

```

ACI-Leaf1# show ip route vrf DATACENTER:DC

10.20.1.0/24, ubest/mbest: 1/o, attached, direct, pervasive

    *via 10.0.8.65%overlay-1, [1/o], 4w3d, static

172.16.100.0/24, ubest/mbest: 1/o

    *via 10.1.168.95%overlay-1, [200/5], 3w0d, bgp-132, internal, tag 132 (mpls-vpn)

172.16.99.0/24, ubest/mbest: 1/o

    *via 10.0.1.14, [20/0], 3w0d, bgp-132, external, tag 200
    
```

Which two statements describe the routing table of the leaf switch? (Choose two.)

- A. The next hop 10.0.8.65 for route 10.20.1.0/24 is the TEP address of a border leaf in ACI.
- B. The next hop 10.0.1.14 for route 172.16.99.0/24 is the TEP address of a border leaf in ACI.
- C. The next hop 10.1.168.95 for route 172.16.100.0/24 is the TEP address of a border leaf in ACI.
- D. 172.16.100.0/24 is a BD subnet in ACI.
- E. 10.20.1.0/24 is a BD subnet in ACI.

**Answer: CE**

#### NEW QUESTION 338

Which storage protocol reduces file locks by using leasing?

- A. CIFS
- B. NFS 4
- C. NFS 3
- D. SMB

**Answer: D**

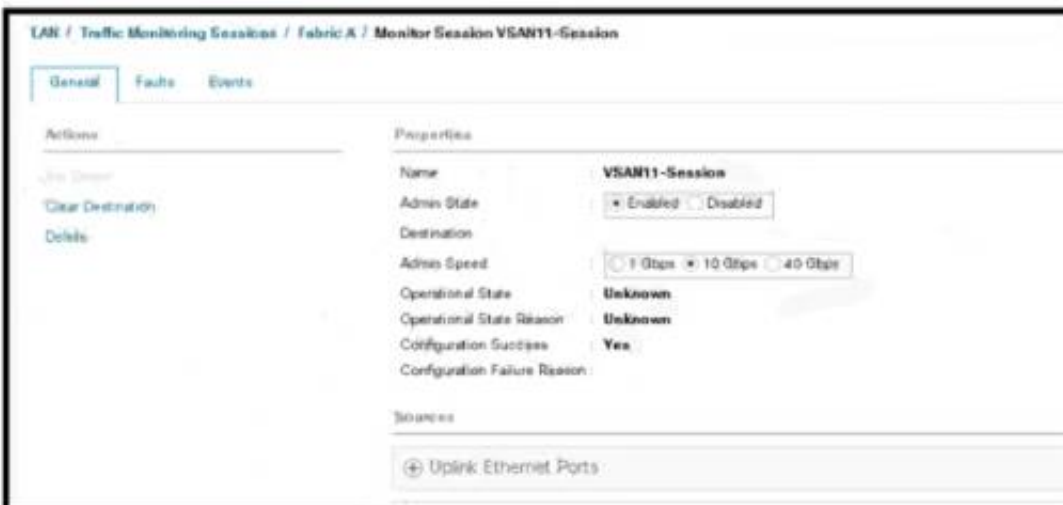
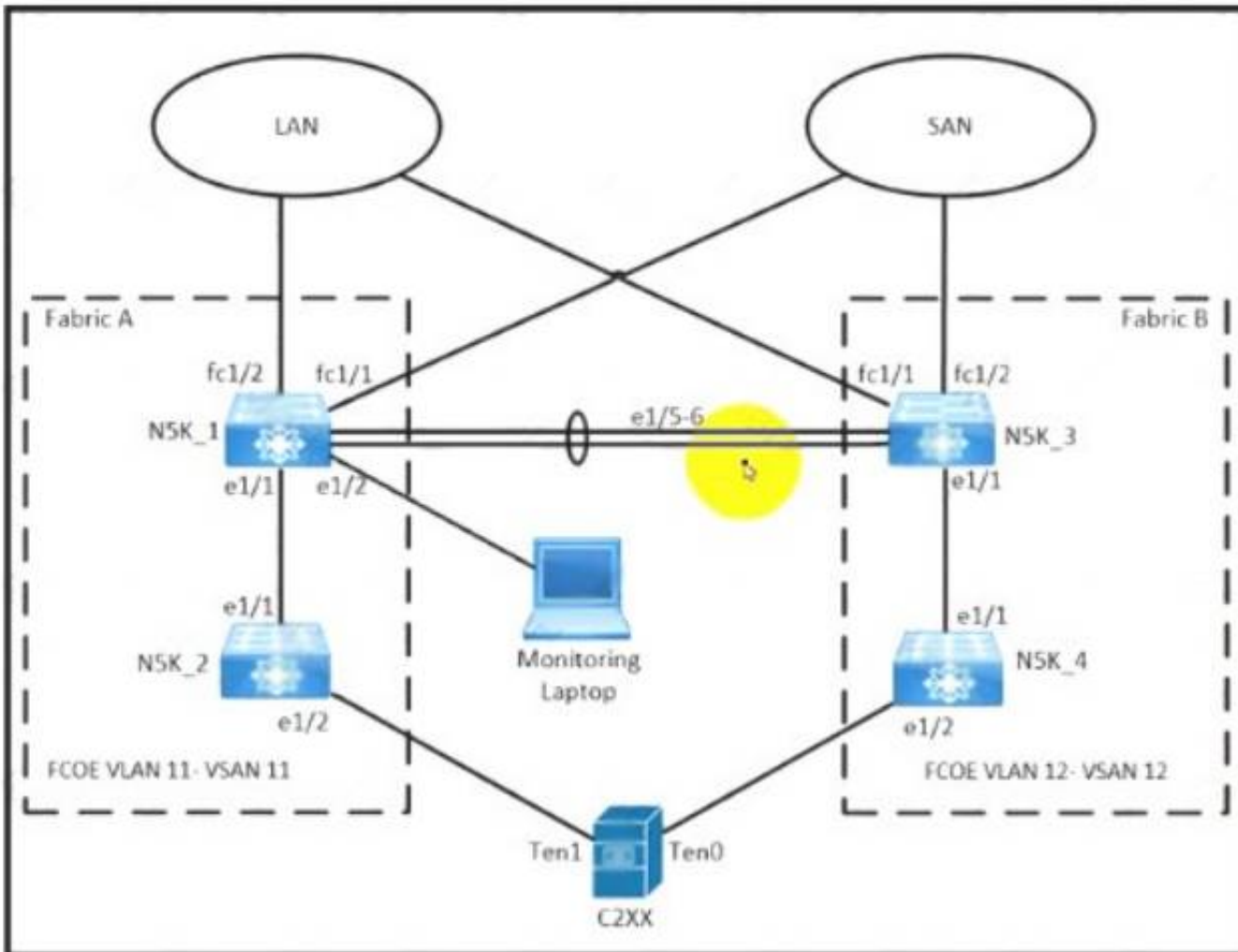
#### Explanation:

<https://www.ciscolive.com/c/dam/r/ciscolive/apjc/docs/2016/pdf/BRKCOM-1211.pdf>

- **SMB Directory Leasing**
  - Ability to cache file and directory metadata
  - Branch offices need to make less round trips to the central server

**NEW QUESTION 341**

Refer to the exhibit.



An engineer is creating a SPAN session to send a copy of all the Fabric-A VSAN 11 traffic on NSK\_1 to the monitoring laptop. The configurator that is presented has already been applied to Cisco UCS Manager. Which action completes the configuration?

- A. Activate a NetFlow monitoring session
- B. Create a SAN traffic monitoring session
- C. Set VLAN 11 as the traffic destination
- D. Select VSAN 11 as the source of traffic.

**Answer: C**

**NEW QUESTION 343**

An engineer must configure Cisco Nexus 9000 Series Switches for Cisco UCS Director integration. The configuration must enable automated onboarding of the switches as they come online. For security purposes, the switches must have the bare minimum of connection methods enabled. The connection protocol must allow authentication through credentials. Which protocol must be configured on the switches to allow automated onboarding?

- A. SNMP
- B. Telnet
- C. SSH
- D. HTTPS

**Answer: C**

**NEW QUESTION 345**

An engineer troubleshoots an Fibre Channel deployment on a Cisco MDS 9000 Series Switch. What does this output indicate about port channel 1?



```
mds9509# show int po1
port-channel 1 is trunking
Hardware is Fibre Channel
Port WWN is 24:01:00:0d:ec:20:ba:00
Admin port mode is F, trunk mode is on
snmp link state traps are enabled
Port mode is TF
Port vsan is 1
Speed is 8 Gbps
Trunk vsans (admin allowed and active) (1,20)
Trunk vsans (up) (1,20)
Trunk vsans (isolated) ()
Trunk vsans (initializing) ()
5 minutes input rate 112 bits/sec, 14 bytes/sec, 0 frames/sec
5 minutes output rate 152 bits/sec, 19 bytes/sec, 0 frames/sec
25787798 frames input, 14359038212 bytes
0 discards, 0 errors
0 CRC, 0 unknown class
0 too long, 0 too short
23082 frames output, 1013152 bytes
0 discards, 0 errors
18 input OLS, 14 LRR, 29 NOS, 0 loop inits
17 output OLS, 0 LRR, 21 NOS, 0 loop inits
Member[1] : fc4/2
Member[2] : fc4/8
Interface last changed at Thu Mar 6 06:27:36 2020
```

- A. Port channel 1 is configured to be an ISL.
- B. Port channel 1 is configured to connect to a host bus adapter.
- C. Port channel 1 is configured to connect to an NPIV switch.
- D. Port channel 1 is configured to connect to an NPV switch.

**Answer:** A

#### NEW QUESTION 350

What is a benefit of using the Cisco UCS Lightweight upgrade feature?

- A. Security updates are scheduled with the next reboot of the fabric interconnects.
- B. All servers are rebooted to push the latest updates.
- C. The firmware version of a component is updated only when it has been modified.
- D. A soft reboot is available for the fabric interconnects.

**Answer:** C

#### NEW QUESTION 353

Refer to the exhibit.

### Create Boot Policy

Name

Description

Reboot on Boot Order Change
☐

Enforce vNIC/vHBA/ISCSI Name
☒

Boot Mode

Legacy
Uefi

**WARNINGS:**  
The type (primary/secondary) does not indicate a boot order presence.  
The effective order of boot devices within the same device class (LAN/Storage/ISCSI) is determined by PCIe bus scan order.  
If **Enforce vNIC/vHBA/ISCSI Name** is selected and the vNIC/vHBA/ISCSI does not exist, a config error will be reported.  
If it is not selected, the vNICs/vHBAs are selected if they exist, otherwise the vNIC/vHBA with the lowest PCIe bus scan order is used.

+ Local Devices
+ CIMC Mounted vMedia
+ vNICs
+ vHBAs
+ iSCSI vNICs
+ EFI Shell

#### Boot Order

+ - % Advanced Filter + Export Print

Name	Order	vNIC/vH	Type	LUN No	WWN	Slot No	Boot No
No data available							

Move Up
Move Down
Delete

An engineer installs a new Cisco UCS B-Series server. The requirement is to install an operating system on a LUN that is provided by the Fibre Channel storage array. Which two steps must be configured in the boot policy to accomplish this goal? (Choose two.)

- A. Disable Enforce vNIC^HBA/ISCSI Name
- B. Add Local CD/DVD and SAN Boot.
- C. Configure a SAN Boot Target with a WWPN
- D. Set Boot Order to External USB and LAN Boot
- E. Create (SCSI VNICS and add Local LUN

**Answer:** AD

#### NEW QUESTION 356

Refer to the exhibit.

```
switch(config)# feature dhcp
switch(config)# ip dhcp snooping
switch(config)# service dhcp
switch(config)# ip dhcp snooping vlan 100,200,250-252
switch(config)# ip dhcp relay information option
```

Which action is taken to ensure that the relay agent forwards the DHCP BOOTREQUEST packet to a DHCP server?

- A. Configure the interface of the DHCP server as untrusted.
- B. Configure the IP address of the DHCP server.
- C. Enable the DHCP relay agent.
- D. Verify the DHCP snooping bindings.

**Answer:** B

#### Explanation:

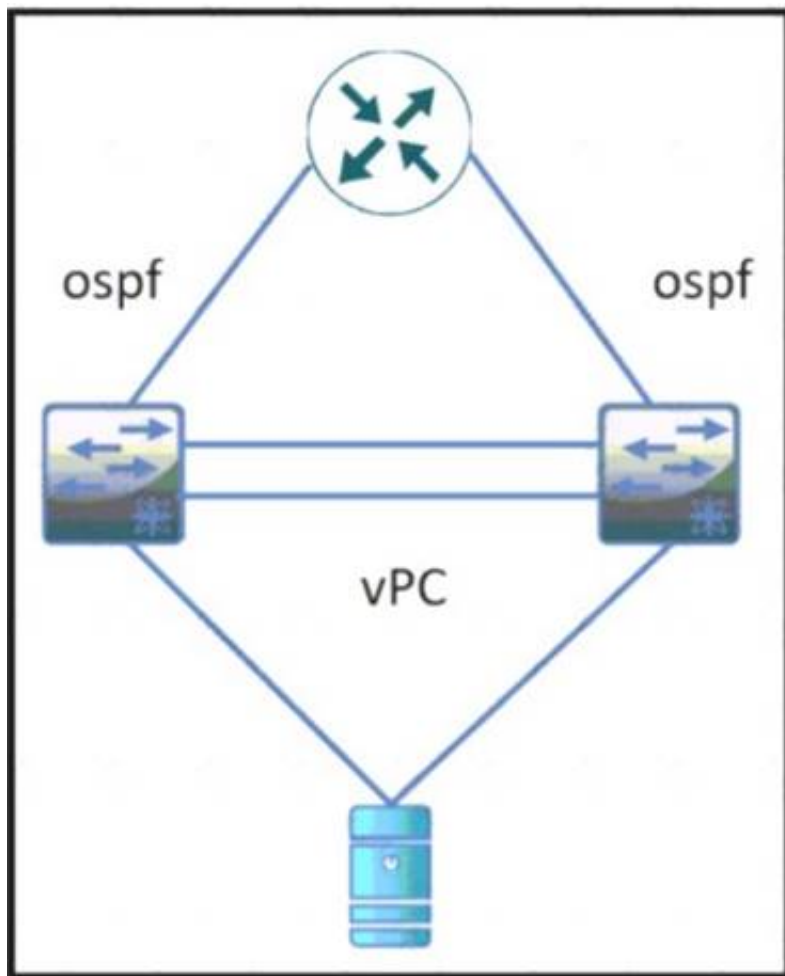
[https://www.cisco.com/c/en/us/td/docs/switches/datacenter/sw/4\\_0/dcnm/security/configuration/guide/sec\\_dcnm](https://www.cisco.com/c/en/us/td/docs/switches/datacenter/sw/4_0/dcnm/security/configuration/guide/sec_dcnm) Text Description automatically generated

## Configuring a DHCP Server Address on a VLAN Interface

You can configure a DHCP server IP address on a VLAN interface (sometimes referred to as a switched virtual interface or SVI). When an inbound DHCP BOOTREQUEST packet arrives on the VLAN interface, the relay agent forwards the packet to the IP address specified.

#### NEW QUESTION 358

Refer to the exhibit



During a vPC peer switch reload, there is packet loss between the server and the router Which action must be taken to prevent this behavior during future reloads?

- A. Set the routed uplink ports of the Cisco Nexus peers as orphans.
- B. Increase the vPC delay restore timer.
- C. Decrease the OSPF hello and dead interval timers.
- D. Disable vPC ARP synchronize on the vPC peers.

**Answer: B**

#### NEW QUESTION 360

An engineer is implementing FCoE. Which aspect of DCBXP on a Cisco Nexus switch affects this implementation?

- A. It uses the Cisco Fabric Services protocol to exchange parameters between two peer links.
- B. It always is enabled on 10/100-Mbps native Ethernet ports.
- C. It provides the authentication of peers on the Cisco Nexus switch.
- D. It requires that LLDP transmit and LLDP receive are enabled on the FCoE interface.

**Answer: D**

#### Explanation:

The Data Center Bridging Exchange Protocol (DCBXP) is an extension of LLDP. It is used to announce, exchange, and negotiate node parameters between peers. DCBXP parameters are packaged into a specific DCBXP TLV. This TLV is designed to provide an acknowledgement to the received LLDP packet. DCBXP is enabled by default, provided LLDP is enabled. DCBXP is disabled on ports where LLDP transmit or receive is disabled.  
[https://www.cisco.com/c/en/us/td/docs/switches/datacenter/nexus5000/sw/layer2/503\\_n2\\_1/b\\_Cisco\\_n5k\\_layer2](https://www.cisco.com/c/en/us/td/docs/switches/datacenter/nexus5000/sw/layer2/503_n2_1/b_Cisco_n5k_layer2)

#### NEW QUESTION 365

Refer to the exhibit.



```

Step 20 Enter no (no is the default) if you are satisfied with the configuration.

The following configuration will be applied:

switchname CiscoMDS
interface mgmt0
  ip address 192.168.10.10
  subnetmask 255.255.255.0
  no shutdown
ip default-gateway 192.168.10.1
telnet server enable
no ssh server enable
no system default switchport shutdown
system default switchport trunk mode on
no zone default-zone permit vsan 1-4093
zoneset distribute full vsan 1-4093
Would you like to edit the configuration? (yes/no) [n]: no

Step 21 Enter yes (yes is default) to use and save this configuration.

Use this configuration and save it? (yes/no) [y]: yes
  
```

An engineer is configuring a Cisco MDS 9000 Series Switch for the first time. After the initial setup process, the name server at IP 192.168.10.11 is missing from the configuration. Which set of actions completes the configuration?

- A. Enter no at step 21 and reinitialize the install
- B. Press the Esc key to access ROMMON mode.
- C. Enter no at step 21 and reload the switch
- D. Configure the advanced IP options.
- E. Enter yes at step 21 to edit the configuration
- F. Add the line dns-server 192.168.10.11.
- G. Enter yes at step 21 and log in
- H. Modify the startup configuration DNS

**Answer: B**

#### NEW QUESTION 367

An engineer enters these commands while in EEM on a Cisco Nexus 9000 Series Switch. event manager applet Backup-config event timer watchdog time 1800 name timer event cli match "copy running-config startup-config" what is the result of applying this configuration?

- A. It saves the running configuration every 1800 seconds.
- B. It generates an error because no action is mentioned.
- C. It executes the copy running-config startup-config command.
- D. It blocks the copy running-config startup-config command.

**Answer: B**

#### Explanation:

<https://www.cisco.com/c/en/us/td/docs/switches/datacenter/nexus9000/sw/93x/system-management/b-cisco-nexus-graphical-user-interface-text-application-email-description-automatically-generated>

### Prerequisites for EEM

EEM has the following prerequisites:

- You must have network-admin user privileges to configure EEM.

### Guidelines and Limitations for EEM

EEM has the following configuration guidelines and limitations:

- The maximum number of configurable EEM policies is 500.
- Action statements within your user policy or overriding policy should not negate each other or adversely affect the associated system policy.
- To allow a triggered event to process any default actions, you must configure the EEM policy to allow the default action. For example, if you match a CLI command in a match statement, you must add the event-default action statement to the EEM policy or EEM will not allow the CLI command to execute.
- When you configure an EEM policy action to collect **show tech** commands, make sure to allocate enough time for the **show tech** commands to complete before the same action is called again.

#### NEW QUESTION 370

Refer to the exhibit.

```
N9K-1# show running-config interface Ethernet1/1
switchport access vlan 10
spanning-tree port type edge
switchport port-security aging time 33
switchport port-security maximum 3
switchport port-security mac-address sticky
switchport port-security

N9K-1# show mac address-table interface ethernet 1/1
Legend:
* - primary entry, G - Gateway MAC, (R) - Routed MAC, O - Overlay MAC
age - seconds since last seen,+ - primary entry using vPC Peer-Link,
(T) - True, (F) - False, C - ControlPlane MAC, ~ - vsan
VLAN      MAC Address      Type      age      Secure NTFY Ports
-----+-----+-----+-----+-----+-----+-----
* 10      0050.7966.6801    secure    -        T        F        Eth1/1
* 10      0050.7966.6802    secure    -        T        F        Eth1/1
* 10      0050.7966.6803    secure    -        T        F        Eth1/1
```

An engineer configures port security on a Cisco Nexus 9000 Series Switch. The requirement is to prevent any newly learned MAC addresses from forwarding traffic on the interface. Also, the already learned MAC addresses must not be affected by the changes. Which configuration meets these requirements?

- A. switchport port-security violation shutdown
- B. switchport port-security violation isolate
- C. switchport port-security violation protect
- D. switchport port-security violation restrict

Answer: C

NEW QUESTION 372

Drag and drop the NAS features from the left onto the NAS descriptions on the right. Not all features are used

block-based data storage

Ethernet protocol

FCoE

file-based data storage

Fibre Channel protocol

stripe data and metadata across nodes

UPnP

storage type

clustering type

connectivity type

serving protocol type

- A. Mastered
- B. Not Mastered

Answer: A

Explanation:

A screenshot of a computer Description automatically generated with medium confidence  
https://en.wikipedia.org/wiki/Network-attached\_storage

NEW QUESTION 375

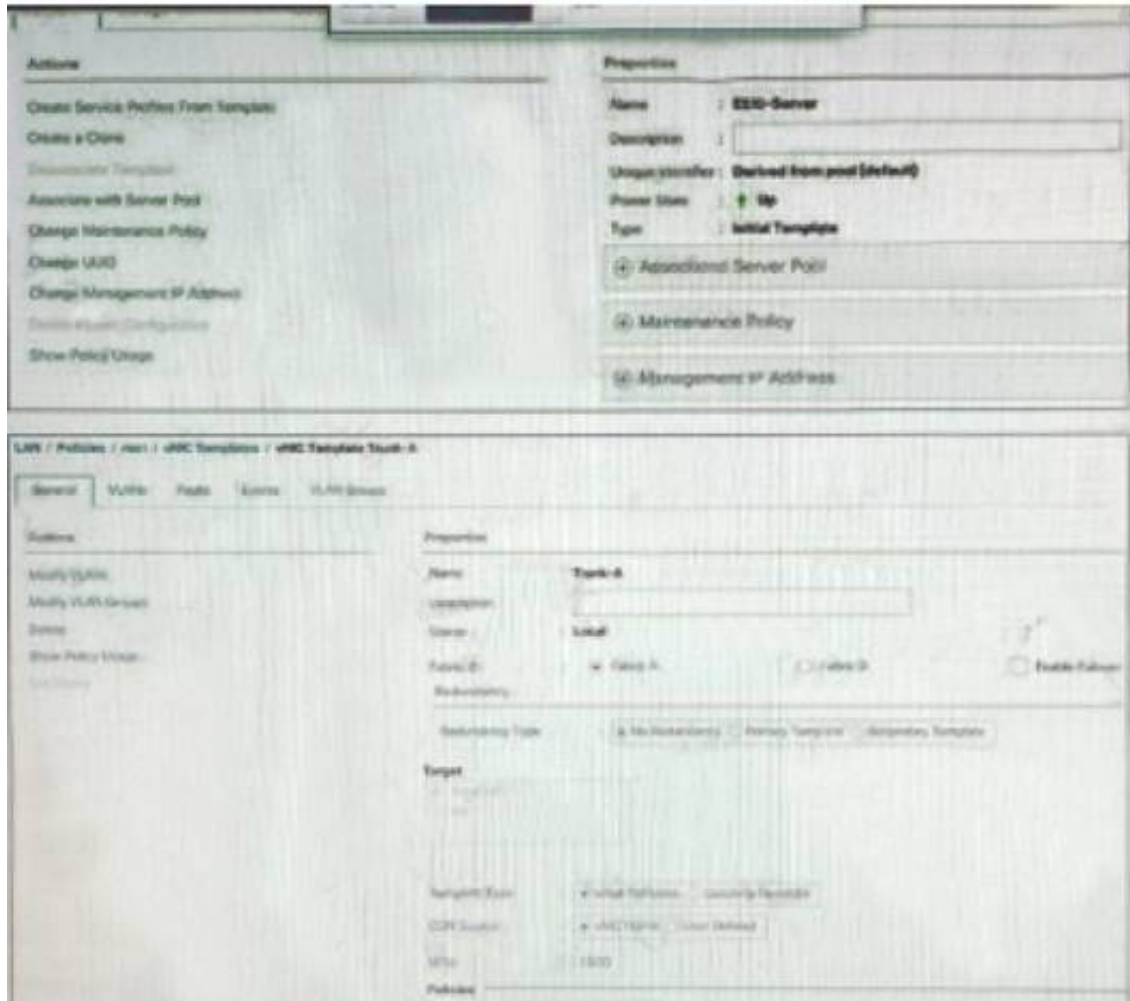
What is an advantage of using Ansible for automation as compared to puppet and chef?

- A. Ansible automates the enforcement of configuration settings.
- B. Ansible perform automation without installing a software agent on the target node.
- C. Ansible configures a set of CLI commands on a device by using NETCONF.
- D. Ansible abstracts a scenario so that set of configuration setting can be used across multiple operating systems.

**Answer: B**

#### NEW QUESTION 380

Refer to the exhibit.



Esxi-server is associated to the blade server. A VLAN added to trunk-a. the VLAN is missing on the vNIC of ESXI-server. Which action should be taken to add the VLAN to the cNIC?

- A. Change the template type of ESXI-Server to an updating template.
- B. Change the template type of Trunk-A to an updating template.
- C. Remove both template and recreate them as updating templates.
- D. Remove the VLAN from the Trunk-A template and add the VLAN again.

**Answer: D**

#### NEW QUESTION 385

A bridge domain is being extended out of a Cisco ACI fabric. Between which of these components are policies used to identify the connectivity between Endpoint Groups and the external connection?

- A. an external bridge domain and an external routed domain
- B. internal contracts and external contracts
- C. internal EPGs and external EPGs
- D. L2Out and L3Out

**Answer: D**

#### NEW QUESTION 386

An engineer is running an ACI fabric, has VMM integration with VMware vCenter, and wants to enable microsegmentation based on vCenter VM attributes. Which statement about microsegmentation is true?

- A. ACI does not support microsegmentation based on vCenter VM attribute
- B. You should use network attributes for microsegmentation.
- C. An ACI microsegmented EPG automatically creates a port group with a private VLAN configured on a VMware vCenter distributed virtual switch.
- D. When enabled, microsegmentation performs distributed switching and routing on the ESXi hosts.
- E. Microsegmentation is supported only using AVE or AVS.

**Answer: B**

#### Explanation:

<https://www.cisco.com/c/en/us/td/docs/switches/datacenter/aci/apic/sw/4-x/virtualization/Cisco-ACIVirtualizati>

#### NEW QUESTION 391

Which configuration implements static ingress replication?



- ☐ interface nve 1  
member vni 2100980  
ingress-replication protocol static  
peer-ip 10.0.0.4
- ☐ interface nve 1  
member vni 127772151  
ingress-replication protocol bgp
- ☐ interface nve 1  
member vni 3126980  
peer vtep 10.0.0.4  
ingress-replication protocol static  
peer-ip 10.0.0.4
- ☐ interface nve 1  
member vni 384233213  
peer vtep 10.0.0.4

- A. Option A
- B. Option B
- C. Option C
- D. Option D

**Answer:** A

**Explanation:**

"Configuring Static Ingress Replication" section here:

[https://www.cisco.com/c/en/us/td/docs/switches/datacenter/nexus9000/sw/7-x/vxlan/configuration/guide/b\\_Cisc](https://www.cisco.com/c/en/us/td/docs/switches/datacenter/nexus9000/sw/7-x/vxlan/configuration/guide/b_Cisc)

**NEW QUESTION 394**

Refer to the exhibit.

```
switch# show radius-server
Global RADIUS shared secret:*****
retransmission count:5
timeout value:10
following RADIUS servers are configured:
  myradius.cisco.users.com:
    available for authentication on port:1812
    available for accounting on port:1813
  172.22.91.37:
    available for authentication on port:1812
    available for accounting on port:1813
    RADIUS shared secret:*****
  10.10.0.0:
    available for authentication on port:1812
    available for accounting on port:1813
    RADIUS shared secret:*****

switch# show radius-server groups
total number of groups:4
following RADIUS server groups are configured:
  group radius:
    server: all configured radius servers
  group Group1:
    server: Server3 on auth-port 1812, acct-port 1813
    server: Server5 on auth-port 1812, acct-port 1813
  group Group5:
```

A network engineer requires remote access via SSH to a Cisco MDS 9000 Series Switch. The solution must support secure access using the local user database when the RADIUS servers are unreachable from the switches. Which command meets these requirements?

- A. aaa authentication none
- B. aaa authentication login default group radius
- C. aaa authentication login default group local
- D. aaa authentication login default fallback error local

**Answer:** D

**Explanation:**

[https://www.cisco.com/c/en/us/td/docs/switches/datacenter/mds9000/sw/6\\_2/configuration/guides/security/nx-o](https://www.cisco.com/c/en/us/td/docs/switches/datacenter/mds9000/sw/6_2/configuration/guides/security/nx-o)

## Configuring Fallback Mechanism for Authentication

You can enable/disable fallback to local database in case the remote authentication is set and all AAA servers are unreachable (authentication error). The fallback is set to local by default in case of an authentication error. You can disable this fallback for both console and ssh/telnet login. Disabling this fallback will tighten the security of authentication.

The following steps explain the fallback mechanism for authentication:

**Step 1** By default fallback will be enabled for both default/console login. The "sh run aaa all" command can be used to verify this.

**Step 2** Disabling fallback will print a warning message.

The CLI syntax and behavior is as follows:

	Command	Purpose
Step 1	switch# <b>config t</b> switch(config)#	Enters configuration mode.
Step 2	switch(config)# show run aaa all aaa authentication login default fallback error local aaa authentication login console fallback error local	Displays the default fallback behavior.
Step 3	switch(config)# <b>no aaa authentication login default fallback error local</b> WARNING!!! Disabling fallback can lock your switch.	Disables the fallback to local database for authentication. <b>Note</b> Replace default with console in this command to disable fallback to console.

### NEW QUESTION 398

Refer to the exhibit.

```
Switch1# show checkpoint summary
1) pim-checkpoint:
Created by admin
Created at Tue, 00:50:29 22 Jun 2021
Size is 24,855 bytes
User Checkpoint Summary
-----
Description: Created by Admin.

2) system-fm-pim:
Created by admin
Created at Tue, 00:08:57 22 Jun 2021
Size is 24,834 bytes
System Checkpoint Summary
-----
Description: Created by Feature Manager.
```

Which command must be used to restore configuration changes made by disabling the PIM feature and skipping any errors?

Refer to the exhibit. Which command must be used to restore configuration changes made by disabling the PIM feature and skipping any errors?

- A. rollback running-config checkpoint new-checkpoint stop-at-first-failure
- B. rollback running-config checkpoint new-checkpoint verbose
- C. rollback running-config checkpoint system-fm-pim-best-effort
- D. rollback running-config checkpoint system-fm-pim atomic

**Answer: C**

### NEW QUESTION 399

Refer to the exhibit.

An engineer must set access to Cisco IMC. The access must be allowed by logging onto the https //datacenter local web page The configuration presented is on the Cisco UCS C240 Series Server Which set of commands completes the configuration?

```
A)
Server# scope cimc
Server /cimc # scope network
Server /cimc/network # set vlan-enabled yes
Server /cimc/network # set vlan-id 10
Server /cimc/network # set vlan-priority 32
Server /cimc/network # set dns-use-dhcp-enabled yes
Server /cimc/network # commit
```

B)

```
Server# scope cimc
Server /cimc # scope network
Server /cimc/network # set dhcp-enabled yes
Server /cimc/network # set v4-addr 192.168.1.10
Server /cimc/network # set v4-netmask 255.255.255.0
Server /cimc/network # set v4-gateway 192.168.1.12
Server /cimc/network # commit
```

C)

```
Server# scope cimc
Server /cimc # scope network
Server /cimc/network # set dhcp-enabled yes
Server /cimc/network # set v4-addr 192.168.1.10
Server /cimc/network # set v4-netmask 255.255.255.0
Server /cimc/network # set preferred-dns-server 192.168.3.20
Server /cimc/network # commit
```

D)

```
Server# scope cimc
Server /cimc # scope network
Server /cimc/network # set vlan-enabled yes
Server /cimc/network # set vlan-id 10
Server /cimc/network # set vlan-priority 32
Server /cimc/network # set preferred-dns-server 192.168.3.20
Server /cimc/network # commit
```

- A. Option A
- B. Option B
- C. Option C
- D. Option D

**Answer:** C

#### NEW QUESTION 403

Which service profile is affected if the default host firmware policy in Cisco UCS Manager is changed?

- A. any service profile that has no host firmware policy defined
- B. any service profile that uses a user-created host firmware policy
- C. any service profile that is not in the root sub-org
- D. any service profile that uses the global-default host firmware policy

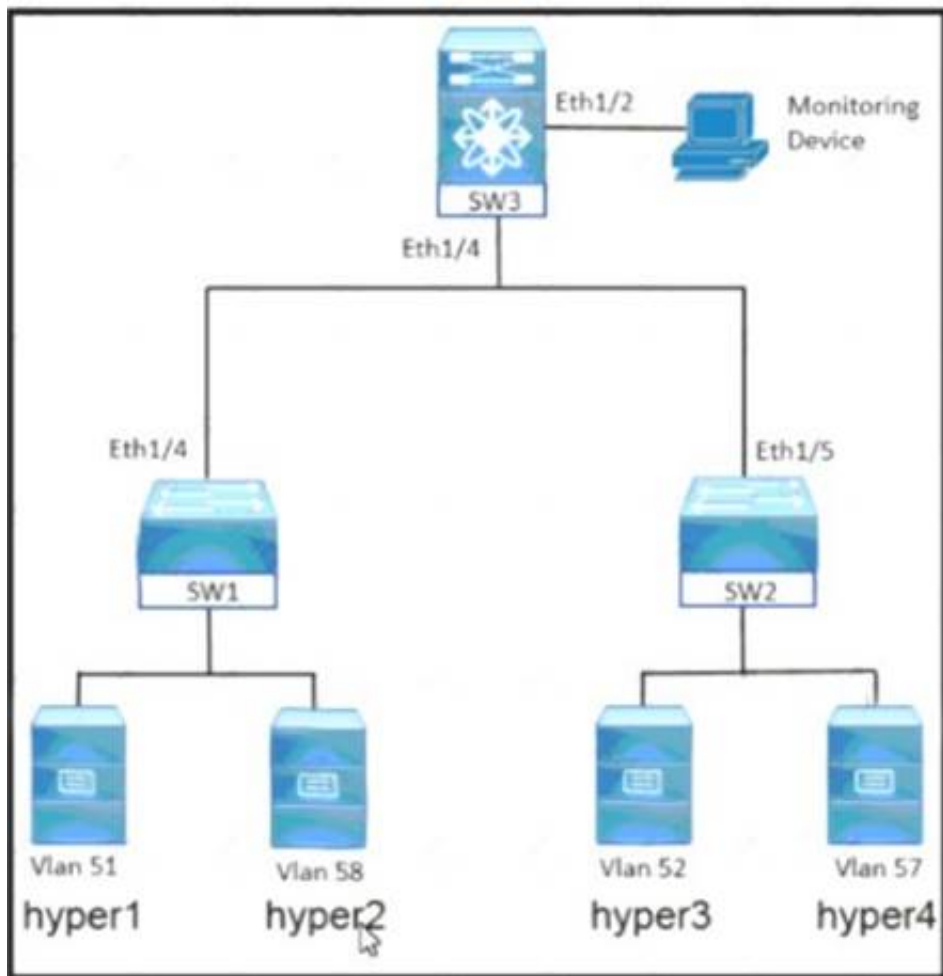
**Answer:** A

#### Explanation:

[https://www.cisco.com/c/en/us/td/docs/unified\\_computing/ucs/ucs-manager/GUI-User-Guides/Firmware-Mgmt/3-1/b\\_UCSM\\_GUI\\_Firmware\\_Management\\_Guide\\_3\\_1/b\\_UCSM\\_GUI\\_Firmware\\_Management\\_Guide\\_3\\_1\\_chapter\\_011.html](https://www.cisco.com/c/en/us/td/docs/unified_computing/ucs/ucs-manager/GUI-User-Guides/Firmware-Mgmt/3-1/b_UCSM_GUI_Firmware_Management_Guide_3_1/b_UCSM_GUI_Firmware_Management_Guide_3_1_chapter_011.html)

#### NEW QUESTION 404

Refer to the exhibit.



An engineer must monitor the Ethernet port and the corresponding VLAN traffic for the hyper4 device. The SW3 device is a Cisco Nexus 7000 Series Switch. Drag and drop the code snippets from the right into the boxes in the configuration to meet these requirements.

```

!SW3 configuration

interface ethernet 1/2
  switchport

monitor session 2
  source interface
  destination interface
  source
  
```

- vlan 57
- ethernet 1/2
- ethernet 1/4
- monitor
- interface vlan 57

- A. Mastered
- B. Not Mastered

**Answer:** A

**Explanation:**

Graphical user interface Description automatically generated

**NEW QUESTION 407**

An engineer must design an automation solution for the Cisco ACI Fabric to speed up the deployment of logical network elements for tenant provisioning. When creating a solution, the engineer must keep in mind that the tool must support these requirements:

- Allow the rapid creation and removal of logical containers.
- Support the creation of custom modules and data structures.
- Be extensible with external libraries and modules.
- Allow rapid testing of code using an on-demand execution environment.

Which automation tool meets these requirements?

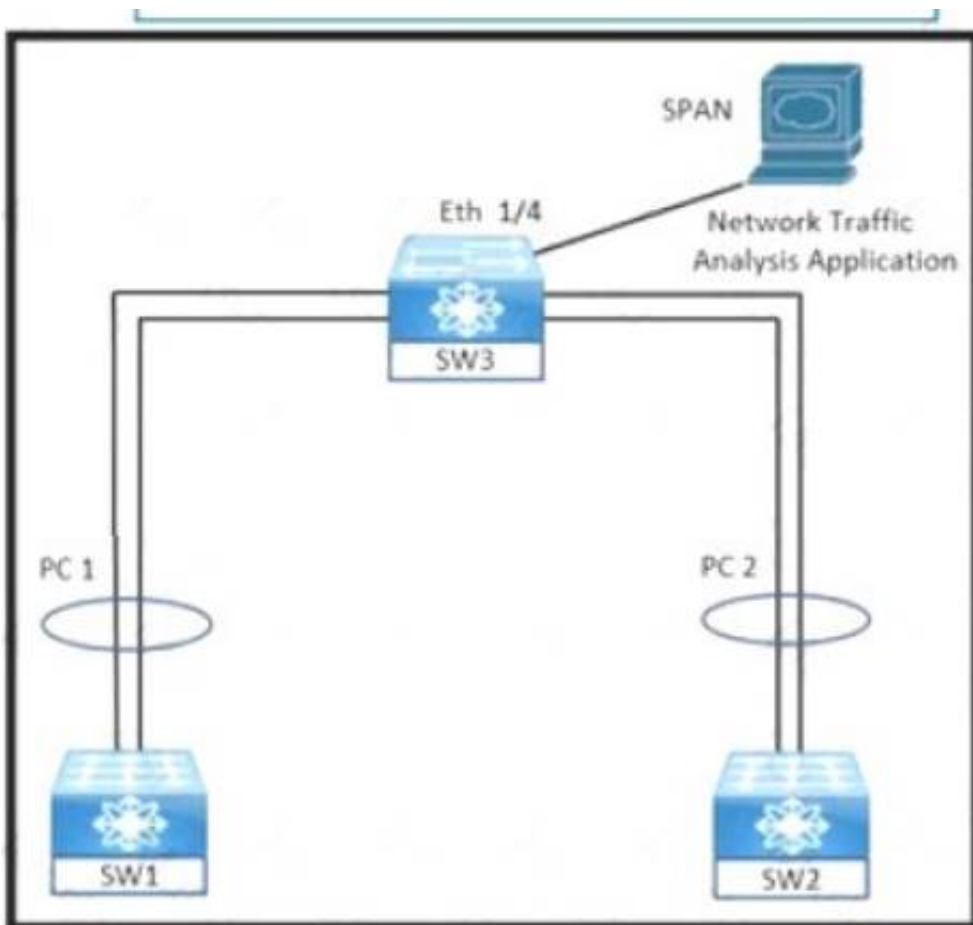
- A. YAML
- B. Chef
- C. SaltStack
- D. Python

**Answer:** B

**NEW QUESTION 412**

Refer to the exhibit.





An engineer must monitor ingress traffic from SW1 and SW2 port-channel interfaces from SW3. Which configuration must be implemented to accomplish this goal?

A)

```

SW3# configure terminal
SW3(config)# source interface port-channel 1 rx
SW3(config)# source interface port-channel 2 tx

SW3(config)# interface ethernet 1/4
SW3(config-if)# destination interface ethernet 1/4
SW3(config-if)# exit

SW3(config)# interface Port-channel 1-2
SW3(config-if)# switchport monitor
SW3(config-if)# exit

```

B)

```

SW3# configure terminal
SW3(config)# monitor session 2
SW3(config-monitor)# source interface port-channel 1 tx
SW3(config-monitor)# source interface port-channel 2 tx

SW3(config)# interface Port-channel 1
SW3(config-if)# switchport monitor
SW3(config-if)# exit

SW3(config)# interface Port-channel 2
SW3(config-if)# switchport monitor
SW3(config-if)# exit

```

C)

```

SW3# configure terminal
SW3(config)# monitor session 2
SW3(config-monitor)# source interface port-channel 1 tx
SW3(config-monitor)# source interface port-channel 2 rx

SW3(config)# interface port-channel 1
SW3(config-if)# switchport monitor
SW3(config-if)# exit

SW3(config)# interface port-channel 2
SW3(config-if)# switchport monitor
SW3(config-if)# exit

```

D)

```

SW3# configure terminal
SW3(config)# monitor session 2
SW3(config-monitor)# source interface port-channel 1 rx
SW3(config-monitor)# source interface port-channel 2 rx

SW3(config)# interface ethernet 1/4
SW3(config-if)# switchport monitor
SW3(config-if)# exit

SW3(config)# monitor session 2
SW3(config-monitor)# destination interface ethernet 1/4

```

- A. Option A
- B. Option B
- C. Option C
- D. Option D

**Answer: D**

#### NEW QUESTION 414

A network engineer must implement RBAC on Cisco MDS 9000 Series Multilayer Switches.  
 Drag and drop the Cisco MDS 9000 Series roles from the left onto the correct categories on the right.

san-operator	System Defined
global-admin	
server-admin	
storage-admin	User Defined
network-admin	
network-operator	

- A. Mastered
- B. Not Mastered

Answer: A

**Explanation:**  
Graphical user interface Description automatically generated with low confidence  
[https://www.cisco.com/c/en/us/td/docs/unified\\_computing/ucs/ucs-manager/GUI-User-Guides/Admin\\_Management/3-1/b\\_Cisco\\_UCS\\_Admin\\_Mgmt\\_Guide\\_3\\_1/b\\_UCSM\\_Admin\\_Mgmt\\_Guide\\_chapter\\_01.html](https://www.cisco.com/c/en/us/td/docs/unified_computing/ucs/ucs-manager/GUI-User-Guides/Admin_Management/3-1/b_Cisco_UCS_Admin_Mgmt_Guide_3_1/b_UCSM_Admin_Mgmt_Guide_chapter_01.html)  
[https://www.cisco.com/c/en/us/td/docs/switches/datacenter/mds9000/sw/8\\_x/config/security/cisco\\_mds9000\\_security\\_config\\_guide\\_8x/configuring\\_users\\_and\\_common\\_roles.html#con\\_1422305](https://www.cisco.com/c/en/us/td/docs/switches/datacenter/mds9000/sw/8_x/config/security/cisco_mds9000_security_config_guide_8x/configuring_users_and_common_roles.html#con_1422305)

NEW QUESTION 417

Refer to the exhibit.

```
sudo -i  
tcpdump -i Eth1-47 -w /tmp/ospf_traffic.pcap ip proto 89
```

A network engineer is using tcpdump to capture a snapshot of OSPF-related traffic on a specific Cisco NX-OS switch port. For security reasons, the capture must be taken using an embedded container that is already deployed on the Cisco Nexus device. Which command completes the script?

- A. guestshell
- B. guestshell-bash
- C. run guestshell
- D. run bash

Answer: A

NEW QUESTION 421

What is an advantage of NFSv4 over Fibre Channel protocol?

- A. Improved security
- B. Lossless throughout
- C. Congestion management
- D. Uses IP transport

Answer: A

**Explanation:**  
<https://www.rcannings.com/san-storage-fc-vs-fcoe-vs-iscsi/>

NEW QUESTION 424

.....

## Thank You for Trying Our Product

### We offer two products:

1st - We have Practice Tests Software with Actual Exam Questions

2nd - Questions and Answers in PDF Format

### 350-601 Practice Exam Features:

- \* 350-601 Questions and Answers Updated Frequently
- \* 350-601 Practice Questions Verified by Expert Senior Certified Staff
- \* 350-601 Most Realistic Questions that Guarantee you a Pass on Your First Try
- \* 350-601 Practice Test Questions in Multiple Choice Formats and Updates for 1 Year

**100% Actual & Verified — Instant Download, Please Click**  
**[Order The 350-601 Practice Test Here](#)**