

## Exam Questions 200-901

Developing Applications and Automating Workflows using Cisco Core Platforms (DEVASC)

<https://www.2passeasy.com/dumps/200-901/>



### NEW QUESTION 1

- (Exam Topic 3)

A developer completed the creation of a script using Git. Before delivering it to the customer, the developer wants to be sure about all untracked files, without losing any information. Which command gathers this information?

- A. git clean -n
- B. git rm -f
- C. git clean -r
- D. git rm \*

**Answer:** A

### NEW QUESTION 2

- (Exam Topic 3)

Which Cisco platform is used to manage data center infrastructure through third-party tools and system integrations?

- A. Cisco DNA Center
- B. Cisco UCS Manager
- C. Cisco Intersight
- D. Cisco UCS Director

**Answer:** D

### NEW QUESTION 3

- (Exam Topic 3)

Refer to the exhibit.

```
workstation:Network admin$ ls
PROD TEST
workstation:Network admin$ ls ./TEST
config.txt
workstation:Network admin$
```

A network engineer must copy the "config.txt" file from directory TEST to directory PROD. The copied file must also be renamed into "current.txt". Which command must be used to accomplish these tasks?

- A. cp ./PROD/current.txt ./TEST/config.txt
- B. cp ./TEST/current.txt ./PROD/config.txt
- C. cp ./PROD/config.txt ./TEST/current.txt
- D. cp ./TEST/config.txt ./PROD/current.txt

**Answer:** D

### NEW QUESTION 4

- (Exam Topic 3)

```
FROM myImage
VOLUME ["/data"]
ENTRYPOINT ["/bin/sh"]
```

Refer to the exhibit. Drag and drop the actions from the left that the contents of this Dockerfile accomplish onto the right. Not all options are used.

Inject the image myImage.

step 1

Pull the image myImage.

step 2

Execute the "data" script under "/bin/sh".

step 3

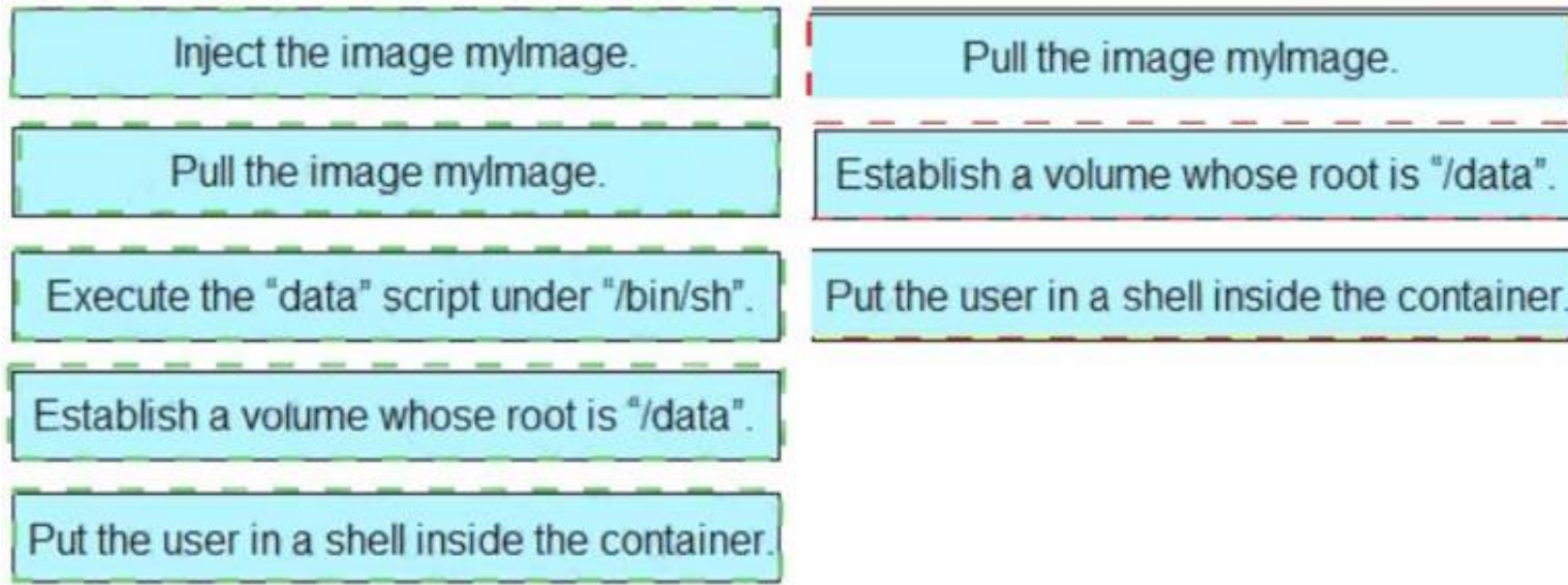
Establish a volume whose root is "/data".

Put the user in a shell inside the container.

- A. Mastered
- B. Not Mastered

**Answer:** A

Explanation:



#### NEW QUESTION 5

- (Exam Topic 3)

What is a benefit of a CI/CD pipeline for infrastructure?

- A. removes manual errors
- B. enables manual steps
- C. removes the need for operations
- D. provides variety for deployments

Answer: A

#### NEW QUESTION 6

- (Exam Topic 3)

How are operations on REST APIs performed as compared to RPC APIs?

- A. In a REST API, operations are performed on an object (node) that is identified by a URL, but RPC APIs are operation-oriented.
- B. In a REST API, operations are performed on an external resource that is defined on the API, but the RCP APIs are resource-oriented.
- C. In a REST API, operations are performed on a platform that is identified by the URL, but RPC APIs are platform-oriented.
- D. In a REST API, operations are performed on an internal resource that is defined on the API, but RPC APIs are resource-oriented.

Answer: D

Explanation:

In a REST API, operations are performed on resources, which are accessed and manipulated using HTTP verbs such as GET, POST, PUT, and DELETE. These resources are identified by a URL and are defined within the API. For example, an API may define a resource called "customers", which can be accessed using the URL "http://api.example.com/customers". To retrieve a list of customers, the client could make a GET request to this URL. To create a new customer, the client could make a POST request to the same URL with the necessary data in the request body. In contrast, in an RPC API, operations are performed by making function calls. The client makes a request to the server, specifying the function to be called and any necessary parameters. The server then executes the function and returns the result to the client. RPC APIs are operation-oriented, meaning that the focus is on the function being called rather than the resource being accessed.

#### NEW QUESTION 7

- (Exam Topic 3)

Which traffic is handled on the control plane?

- A. BGP
- B. SMB
- C. NTP
- D. NETCONF

Answer: A

#### NEW QUESTION 8

- (Exam Topic 3)

An engineer must configure Cisco Nexus devices and wants to automate this workflow. The engineer will use an Ansible playbook to configure devices through Cisco NX REST API. Before the code is run, which resource must be used to verify that the REST API requests work as expected?

- A. Cisco Open NX-OS
- B. Cisco NX-OS SDK
- C. Cisco Learning Labs
- D. Cisco Code Exchange for Nexus

Answer: C

#### NEW QUESTION 9

- (Exam Topic 3)

What is a benefit of using model-driven programmability for infrastructure automation?

- A. connected user tracking
- B. infrastructure resource optimization
- C. multiple device control protocols
- D. device performance monitoring

**Answer:** C

#### NEW QUESTION 10

- (Exam Topic 3)

What is a principle of a code review process?

- A. Changes are made after the code is submitted to source control.
- B. It must not prevent code from getting into production as quickly as possible.
- C. Naming standards must be consistent.
- D. A technical lead must sign off on the review.

**Answer:** D

#### NEW QUESTION 10

- (Exam Topic 3)

Drag and drop the code from the bottom onto the box where the code is missing to authenticate with the Cisco DNA Center REST API by using basic authentication. Then generate a token for later use. Not all options are used.

```
import requests
from requests.auth import HTTPBasicAuth

BASE_URL = 'https://sandboxdnac2.cisco.com'
AUTH_URL = '/dna/system/api/v1/' + 
USERNAME = 'admin'
PASSWORD = 'qwer1234!'

response = requests. (BASE_URL + AUTH_URL,
    auth=HTTPBasicAuth( , ))
token = response.json()['Token']
print(token)
```

auth/basic	/auth/token	post	get
USERNAME	Token	PASSWORD	

- A. Mastered
- B. Not Mastered

**Answer:** A

**Explanation:**



```
import requests
from requests.auth import HTTPBasicAuth

BASE_URL = 'https://sandboxdnac2.cisco.com'
AUTH_URL = '/dna/system/api/v1/' + '/auth/token'
USERNAME = 'admin'
PASSWORD = 'qwer1234!'

response = requests.post(BASE_URL + AUTH_URL,
    auth=HTTPBasicAuth(USERNAME, PASSWORD))
token = response.json()['Token']
print(token)
```

auth/basic /auth/token post get  
 USERNAME Token PASSWORD

#### NEW QUESTION 15

- (Exam Topic 3)

What is the purpose of running tests before writing code in test-driven development?

- A. to find unexpected failures in the tests
- B. to demonstrate that the tests fail for expected reasons
- C. to ensure that the tests pass
- D. to provide proof of the work carried out

Answer: D

#### NEW QUESTION 17

- (Exam Topic 3)

Drag and drop the capabilities from the left onto the Cisco Network Management Platforms that support the capabilities on the right.

receives AI/ML network performance insights, and uses guided issue remediation	Meraki
achieves automation through common policy for data center operations	Cisco DNA Center
establishes an overlay fabric to connect data centers, branches, and campuses through vManage	ACI
provisions and manages networks, networking devices, and clients through a fully managed cloud service	Cisco SD-WAN
supports multivendor networks through Network Element Drivers	NSO

- A. Mastered
- B. Not Mastered

Answer: A

Explanation:

receives AI/ML network performance insights, and uses guided issue remediation	provisions and manages networks, networking devices, and clients through a fully managed cloud service
achieves automation through common policy for data center operations	receives AI/ML network performance insights, and uses guided issue remediation
establishes an overlay fabric to connect data centers, branches, and campuses through vManage	achieves automation through common policy for data center operations
provisions and manages networks, networking devices, and clients through a fully managed cloud service	establishes an overlay fabric to connect data centers, branches, and campuses through vManage
supports multivendor networks through Network Element Drivers	supports multivendor networks through Network Element Drivers

NEW QUESTION 22

- (Exam Topic 3)

Drag and drop the API characteristics from the left onto the categories on the right.

The API is seen as a function call.	REST <div></div> <div></div>
There is communication between server and client.	
It follows a resource-oriented model.	RPC <div></div> <div></div>
The API can be stateless.	

- A. Mastered  
B. Not Mastered

Answer: A

Explanation:

Graphical user interface, application Description automatically generated

NEW QUESTION 23

- (Exam Topic 3)

A developer is attempting to retrieve all the messages from a Cisco Webex space. The server responds by sending the first 1,000 messages. The developer must make additional requests to retrieve the rest of the messages. Which API constraint is described in this scenario?

- A. payload limiting  
B. throttling  
C. pagination  
D. rate limiting

Answer: C

Explanation:

<https://developer.atlassian.com/server/confluence/pagination-in-the-rest-api/>

NEW QUESTION 24

- (Exam Topic 3)

## SDK Documentation:

### OrganizationController:

```
get_organizations()
get_network_device(dict)
```

### DevicesController:

```
get_network_devices(id)
```

### NetworksController:

```
get_organization_networks(dict)
```

Refer to the exhibit. A script must output details of all the Cisco Meraki MS220-BP switches across all organizations and networks. Drag and drop the code snippets from the bottom onto the boxes in the code to complete the script. Not all options are used.

```
from meraki_sdk.meraki_sdk_client import MerakiSdkClient
from meraki_sdk.exceptions.api_exception import APIException

api_key = "API_KEY"
client = MerakiSdkClient(api_key)

for org in [ ]:
    try:
        options = {"organization id": org["id"]}
        networks = [ ]
        for network in networks:
            devices = [ ]
            for device in devices:
                if device["model"] == "MS220-8P":
                    options = {"network id": network["id"], "serial": device["serial"]}
                    output = [ ]
                    print(output)
            except APIException as e:
                pass
```

client.organizations.get\_organizations() :

client.networks.get\_organization\_networks(api\_key)

client.networks.get\_organization\_networks(options)

client.devices.get\_network\_devices(network ["id"])

client.devices.get\_network\_device(options=options)

client\_devices.get\_network\_device(device ["model"])

- A. Mastered
- B. Not Mastered

Answer: A

Explanation:



```
from meraki_sdk.meraki_sdk_client import MerakiSdkClient
from meraki_sdk.exceptions.api_exception import APIException

api_key = "API_KEY"
client = MerakiSdkClient(api_key)

for org in [ ]:
    try:
        client.organizations.get_organizations():
        options = {"organization id": org["id"]}
        networks = [ client.networks.get_organization_networks(options) ]
        for network in networks:
            devices = [ client.devices.get_network_devices(network ["id"]) ]
            for device in devices:
                if device["model"] == "MS220-8P":
                    options = {"network id": network["id"], "serial": device["serial"]}
                    output = [ client.devices.get_network_device(options=options) ]
                    print(output)
            except APIException as e:
                pass
```

```
client.organizations.get_organizations():
client.networks.get_organization_networks(api_key)
client.networks.get_organization_networks(options)
client.devices.get_network_devices(network ["id"])
client.devices.get_network_device(options=options)
client_devices.get_network_device(device ["model"])
```

#### NEW QUESTION 26

- (Exam Topic 3)

Which solution reduces costs from MPLS, improves application performance, and simplifies operations?

- A. Cisco NSO
- B. Cisco SD-WAN
- C. Cisco ACI
- D. Cisco DNA Center

**Answer: B**

#### NEW QUESTION 27

- (Exam Topic 3)

Which OWASP threat takes advantage of a web application that the user has already authenticated to execute an attack?

- A. phishing
- B. DoS
- C. brute force attack
- D. CSRF

**Answer: D**

#### Explanation:

Cross-Site Request Forgery (CSRF) is an attack that forces an end user to execute unwanted actions on a web application in which they're currently authenticated.

<https://owasp.org/www-community/attacks/csrf>

#### NEW QUESTION 31

- (Exam Topic 3)

Drag and drop the code snippets from the bottom onto the blanks in the code to complete the happy path scenario. Not all options are used.



```
import member as m
import pytest
class Team:
    def __init__(self, name):
        self.name = name
        self.members = []
    def add_member(self, member):
        if member:
            if member not in self.members:
                
                return True
            else:
                
        else:
            

@pytest.fixture
def team():
    team = Team('Reds')
    yield team
    del team
@pytest.fixture
def member():
    member = m.Member('Chris George')
    yield member
    del member
@pytest.mark.usefixtures('team', 'member')
class TestHappyPathAddMemberToTeam:
    def test_add_member_to_team(self, team, member):
        assert  is True
```

- 
- 
- 
- 
- 
- 

- A. Mastered
- B. Not Mastered

Answer: A

Explanation:

```
import member as m
import pytest
class Team:
    def __init__(self, name):
        self.name = name
        self.members = []
    def add_member(self, member):
        if member:
            if member not in self.members:
                
                return True
            else:
                
        else:
            

@pytest.fixture
def team():
    team = Team('Reds')
    yield team
    del team
@pytest.fixture
def member():
    member = m.Member('Chris George')
    yield member
    del member
@pytest.mark.usefixtures('team', 'member')
class TestHappyPathAddMemberToTeam:
    def test_add_member_to_team(self, team, member):
        assert  is True
```

- 
- 
- 
- 
- 
- 

## NEW QUESTION 32

- (Exam Topic 3)

Which port does HTTPS use by default?

- A. 433
- B. 443
- C. 803
- D. 883

Answer: B

#### NEW QUESTION 35

- (Exam Topic 3)

A development team is creating an application used for contactless payments. The application must: Be web-based Capture and process the credit card information for a purchase.

Which security action must the web application use to gather and process the private customer data?

- A. Enable RATs to monitor the web application remotely.
- B. Disable botnets to eliminate risks.
- C. Disable TLS to increase the connection speed.
- D. Enable the encryption of network traffic.

Answer: D

#### NEW QUESTION 40

- (Exam Topic 3)

```
import requests
from requests.auth import HTTPBasicAuth

user= "user"
password= "PASSWORD"

token=requests.post('https://<DNAC ADDRESS>/dna/system/api/v1/auth/token',
)
```

Refer to the exhibit. A developer must use a token to collect data from Cisco DNA Center API and prepares a Python script to send requests. Which line of code needs to be placed on the snippet where the code is missing to obtain a token from the Cisco DNA Center API?

- A. token=BasicAuth('user','password'))
- B. auth=BasicAuth('user','password'))
- C. auth=HTTPBasicAuth(user,password))
- D. token=HTTPBasicAuth(user,password))

Answer: C

#### NEW QUESTION 44

- (Exam Topic 3)

Refer to the exhibit.

```
module ietf-interface {
  namespace "urn:ietf:params:xml:ns:yang:ietf-interfaces";
  prefix if;
  import ietf-yang-types {
    prefix yang;
  }
  container interfaces-state {
    list interface {
      key "name";
      leaf name {
        type string;
      }
      leaf admin-status {
        type enumeration {
          enum up {
            value 1;
          }
          enum down {
            value 2;
          }
          enum testing {
            value 3;
          }
        }
      }
      leaf if-index {
        type int32 {
          range "1..2147483647"
        }
      }
      container statistics {
        leaf in-octets {
          type yang:counter64;
        }
        leaf in-unicast-pkts {
          type yang:counter64;
        }
      }
    }
  }
}
```

Which XML snippet has interface information that conforms to the YANG model?

A. Text Description automatically generatedB.

```
<interfaces-state
xmlns="urn:ietf:params:xml:ns:yang:ietf-interfaces"
xmlns:if="urn:ietf:params:xml:ns:yang:ietf-interfaces">
  <interface name="GigabitEthernet1">
    <admin-status>1</admin-status>
    <if-index>1</if-index>
    <statistics>
      <in-octets>408164820</in-octets>
      <in-unicast-pkts>728061</in-unicast-pkts>
    </statistics>
  </interface>
</interfaces-state>
```

Text

Description automatically generated

```
<interfaces-state
xmlns="urn:ietf:params:xml:ns:yang:ietf-interfaces"
xmlns:if="urn:ietf:params:xml:ns:yang:ietf-interfaces">
  <interface>
    <name>GigabitEthernet1</name>
    <admin-status>up</admin-status>
    <if-index>1</if-index>
    <in-octets>408164820</in-octets>
    <in-unicast-pkts>728061</in-unicast-pkts>
  </interface>
</interfaces-state>
```

B. Text Description automatically generated



```
<interfaces-state
xmlns="urn:ietf:params:xml:ns:yang:ietf-interfaces"
xmlns:if="urn:ietf:params:xml:ns:yang:ietf-interfaces">
  <interface>
    <name>GigabitEthernet1</name>
    <admin-status>up</admin-status>
    <if-index>1</if-index>
    <statistics>
      <in-octets>408164820</in-octets>
      <in-unicast-pkts>728061</in-unicast-pkts>
    </statistics>
  </interface>
</interfaces-state>
```

C. Text Description automatically generated

```
<interfaces-state
xmlns="urn:ietf:params:xml:ns:yang:ietf-interfaces"
xmlns:if="urn:ietf:params:xml:ns:yang:ietf-interfaces">
  <interface>
    <name>GigabitEthernet1</name>
    <admin-status>1</admin-status>>
    <if-index>1</if-index>
    <statistics>
      <in-octets>408164820</in-octets>
      <in-unicast-pkts>728061</in-unicast-pkts>
    </statistics>
  </interface>
</interfaces-state>
```

**Answer:** C

**Explanation:**

<https://datatracker.ietf.org/doc/id/draft-ietf-netmod-interfaces-cfg-01.txt> <admin-status>up</admin-status>

#### NEW QUESTION 49

- (Exam Topic 3)

Which tool provides a testing environment to run tests on network devices and perform network automation scenarios?

- A. Visual Studio Code
- B. Cisco VIRL
- C. pyATS
- D. Cisco Packet Tracer

**Answer:** B

#### NEW QUESTION 52

- (Exam Topic 2)

In test-driven development, what are two of the green bar patterns? (Choose two.)

- A. another test
- B. break
- C. triangulate
- D. starter test
- E. fake it

**Answer:** CE

**Explanation:**

<https://blog.baudson.de/blog/test-driven-development-green-bar-patterns>

#### NEW QUESTION 57

- (Exam Topic 2)

Which application should be used to externally access all applications deployed in the same host machine with a single public IP address and port, when each application listens on different local ports?

- A. reverse proxy
- B. load balancer
- C. DNS

D. firewall

**Answer:** D

#### NEW QUESTION 58

- (Exam Topic 2)

Into which type of Python data structure should common data formats be parsed?

- A. sequence
- B. set
- C. dictionary
- D. list

**Answer:** C

#### NEW QUESTION 59

- (Exam Topic 2)

A developer has created a new image to use in a Docker build and has added a tag for the image by using the command:

```
$ docker tag 84fe411926287 local/app:0.4
```

Which command must be executed next to build the Docker image using the tag?

- A. \$ docker build -p local/app:0.4
- B. \$ docker run -t local/app:0.4
- C. \$ docker run -p local/app:0.4
- D. \$ docker build -t local/app:0.4

**Answer:** D

#### NEW QUESTION 64

- (Exam Topic 2)

What is a capability of the NETCONF protocol?

- A. allows Python scripts to be executed externally from a network device
- B. uses JSON to encode data in its content layer
- C. allows XML messages to be exchanged via the SSH protocol
- D. exposes a web-based interface

**Answer:** C

#### NEW QUESTION 66

- (Exam Topic 2)

Refer to the exhibit.

```
import requests
from requests.auth import HTTPBasicAuth
from config import url, username, password
response = requests.login(url, auth=HTTPBasicAuth (username, password), verify=False)
print response.status_code
```

The script returns an output of 401. To use the supplied URL, an HTTP GET request must be sent with an Authorization header. The header value is a Base64 encoded concatenation of the username and password. Which action must be taken to return an output of 200?

- A. Change the verify=False setting in the request to verify=True to enable HTTP Basic authentication
- B. Modify the method from LOGIN to GET and supply the username ;password value as JSON payload
- C. Verify that the username and password values imported from the configuration file are still valid.
- D. Insert an Authorization header with the values username password from the supplied configuration file.

**Answer:** C

#### NEW QUESTION 67

- (Exam Topic 2)

A company wants to accelerate the adoption of technologies that will simplify its operations. Staff have different skill levels and are looking for a single site to find easy-to-consume beginner, intermediate, and advanced multidomain use cases. Which site should be used?

- A. DevNet Ecosystem Exchange
- B. DevNet Automation Exchange
- C. DevNet Creations
- D. DevNet Support Forum

**Answer:** D

#### NEW QUESTION 71

- (Exam Topic 2)

Refer to the exhibit.

**API v1 documentation:**

Authentication and authorization: Bearer Token  
 Inventory endpoint: /api/v1/inventory  
 Method: GET  
 Response formats: text/html, application/json, application/html

**Token:**

dXNlcm5hbWU6cGFzc3dvcmQ=

**Api call:**

GET /api/v1/inventory HTTP/1.1  
 Host: example.com

**Response:**

HTTP/1.1 401 Unauthorized

An API call is constructed to retrieve the inventory in XML format by using the API. The response to the call is 401 Unauthorized. Which two headers must be added to the API call? (Choose two.)

- ☐ Accept: application/xml
- ☐ Content-Type: application/xml
- ☐ Authentication: Bearer dXNlcm5hbWU6cGFzc3dvcmQ=
- ☐ Bearer-Token: dXNlcm5hbWU6cGFzc3dvcmQ=
- ☐ Authorization: Bearer dXNlcm5hbWU6cGFzc3dvcmQ=

- A. Option A
- B. Option B
- C. Option C
- D. Option D
- E. Option E

**Answer:** BE

**NEW QUESTION 75**

- (Exam Topic 2)

Before which process is code review performed when version control is used?

- A. Branching code
- B. Merge of code
- C. Checkout of code
- D. Committing code

**Answer:** D

**NEW QUESTION 76**

- (Exam Topic 2)

A developer is trying to retrieve data over a REST API. The API server responds with an HTTP client error response code. After investigating the response the developer realizes the response has a Retry-After header. What is the root cause of this error?

- A. The REST service is unreachable at the time of the REST request
- B. Too many requests were sent to the REST service in a given amount of time.
- C. An appliance limited the rate of requests to the transport layer.
- D. An appliance limited the rate of requests to the application layer

**Answer:** B

**NEW QUESTION 81**

- (Exam Topic 2)

A developer creates a web application that receives a username and password and uses them to sync the credentials to other services through HTTPS. API keys



to services are part of the configuration files of the application, but the credentials to the database that stores the synchronization logs are obtained through an external vault service. What is the security issue in this scenario?

- A. Communication between the application and the services is not encrypted.
- B. The database credentials should be stored in the configuration files so that they are secured on the same server.
- C. The API keys are stored in the configuration files but should be stored in the vault service.
- D. The synchronization logs should be encrypted and not stored in a relational database.

**Answer:** A

#### NEW QUESTION 84

- (Exam Topic 2)

What is the difference between YAML and JSON data structure?

- A. YAML uses spaces; JSON uses parentheses
- B. YAML uses indentation; JSON uses brackets and braces
- C. YAML uses brackets and braces; JSON uses indentation
- D. YAML uses parentheses; JSON uses spaces

**Answer:** A

#### NEW QUESTION 85

- (Exam Topic 2)

What is a benefit of test-driven development?

- A. early customer involvement
- B. increased code quality
- C. faster releases that have minimal features
- D. strict adherence to product requirements

**Answer:** D

#### NEW QUESTION 88

- (Exam Topic 2)

Which API must an engineer use to change a netmask on a Cisco IOS XE device?

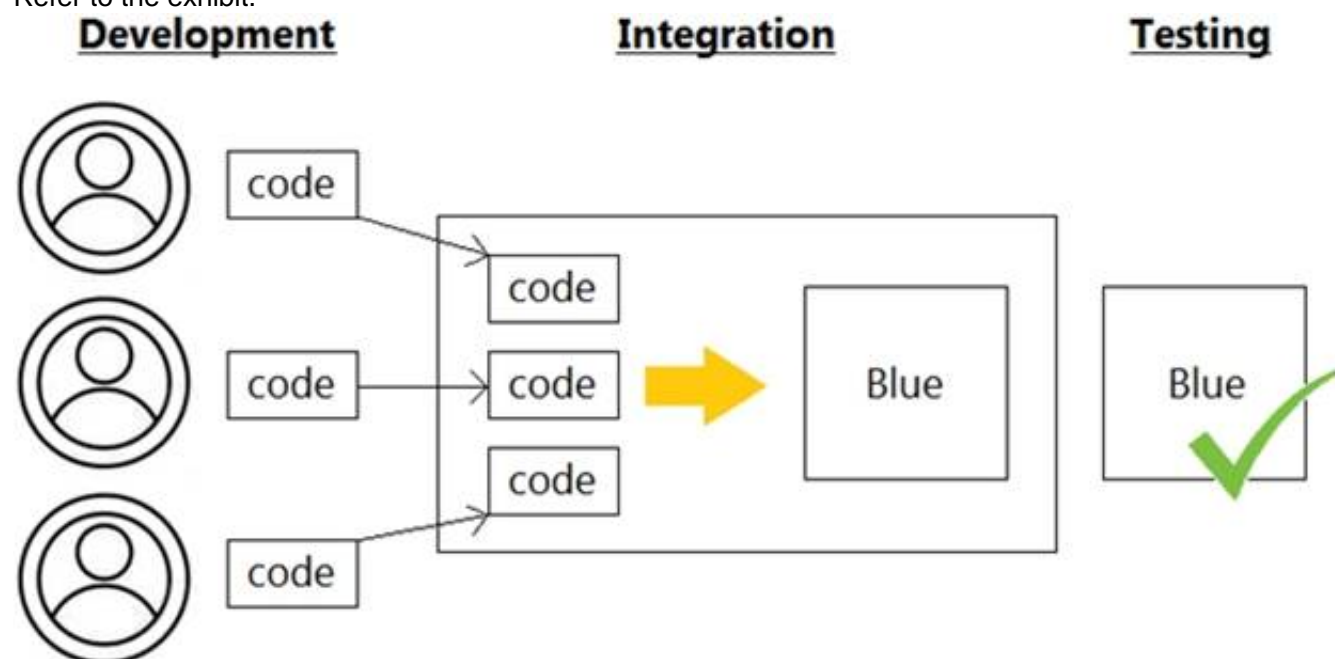
- A. Meraki
- B. RESTCONF/YANG
- C. SD-WAN
- D. DNAC

**Answer:** B

#### NEW QUESTION 91

- (Exam Topic 2)

Refer to the exhibit.



Which infrastructure automation method is shown?

- A. Waterfall
- B. CI/CD pipeline
- C. Agile
- D. Lean

**Answer:** C

#### NEW QUESTION 92

- (Exam Topic 2)

In the test-driven development model, what is changed after a test fails?

- A. test
- B. schedule
- C. project requirements
- D. code

**Answer:** D

**Explanation:**

Reference:

<https://www.guru99.com/test-driven-development.html#:~:text=In%20simple%20terms%2C%20test%20cases,c>

**NEW QUESTION 97**

- (Exam Topic 2)

Refer to the exhibit.

```
# base image
FROM alpine

# Install python and pip
RUN apk add --update py2-pip

# Install python modules needed by the python app
COPY requirements.txt /usr/src/app/
RUN pip install --no-cache-dir -r /usr/src/app/requirements.txt

#copy local files for the app to run
COPY app.py /usr/src/app/
COPY templates/index.html /usr/src/app/templates/

EXPOSE 8080

#run the application
CMD ["python", "/usr/src/app/app.py"]
```

Which function does the EXPOSE line perform when building an image from this Dockerfile?

- A. Local port 8080 of the container that launched with this docker image is accessible from co-hosted containers and external clients.
- B. Local port 8080 is not reachable at all because no IP address is specified along with the EXPOSE command of the Dockerfile.
- C. Local port 8080 is accessible from other containers running on the same docker host as the container that launched with this docker image.
- D. Local port 8080 of the container that launched with this docker image is accessible to external clients.

**Answer:** C

**Explanation:**

By default, the EXPOSE instruction does not expose the container's ports to be accessible from the host. In other words, it only makes the stated ports available for inter-container interaction.

Whereas publishing a port using either -P or -p exposes it, exposing a port using EXPOSE or --expose does not publish it.

So, while exposed ports can only be accessed internally, published ports can be accessible by external containers and services.

<https://www.whitesourcesoftware.com/free-developer-tools/blog/docker-expose-port/>

**NEW QUESTION 101**

- (Exam Topic 2)

Drag and drop the code snippets from the bottom to the blanks in the code to complete the HTTP response. Not all options are used.

Request URL: http://www.example.com/

: GET

: 200 OK

Remote Address: [2606:2800:220:1:248:1893:25c8:1946]:80

Referrer Policy: strict-origin-when-cross-origin

Response Headersview source

Accept-Ranges: bytes

Age: 396561

Cache-Control: max-age=604800

: gzip

Content-Length: 648

: text/html; charset=UTF-8

Date: Sat, 20 Nov 2020 20:49:34 GMT

Etag: "3147526947+ident"

Expires: Sat, 21 Nov 2020 20:49:34 GMT

Last-Modified: Thu, 17 Oct 2019 07:18:26 GMT

Server: ECS (dna/63AA)

Vary: Accept-Encoding

X-Cache: HIT

Request Headersview source

Accept: text/html,application/xhtml+xml,application/xml;q=0.9, image/avif,image/webp,image/apng,\*/\*;q=0.8,application/signed-exchange;v=b3;q=0.9

Accept-Encoding: gzip, deflate

Accept-Language: en-US,en;q=0.9

Request Type

Request Control

Status Code

Content-Type

Request Method

Content Code

Content-Encoding

- A. Mastered
- B. Not Mastered

Answer: A

Explanation:  
Graphical user interface, text, application Description automatically generated

NEW QUESTION 102  
- (Exam Topic 2)  
Refer to the exhibit.

List Messages

Lists all messages in a room. Each message will include content attachments if present.

The list sorts the messages in descending order by creation date.

Long result sets will be split into pages.

GET

/v1/messages

Query Parameters

roomId

string Required

List messages in a room, by ID.

parentId

string

List messages with a parent, by ID.

Try it

Example

Request

Response

https://webexapis.com/v1/messages?roomId=Y2lzY29zcGFyazovL3VzL1JPT00vYmJjZWVxYWQtdNDNmMS0zYjU4LTkxNDctZjE0YmlwYzRkMTU0&parentId=Y2lzY29zcGFyazovL3VzL01FU1NBR0UvZW12TlZjA0N2RhMS0xMWU5LTg2NTgtZTkzYzNiODZjZmFm&mentionedPeople=Y2lzY29zcGFyazovL3VzL1BFT1BMRS8yNDlmNzRkOS1kYjhhLTQzY2EtODk2Yi04NzllZDI0MGFjNTM&before=2016-04-21T19:01:55.966Z&beforeMessage=Y2lzY29zcGFyazovL3VzL01FU1NBR0UvOTJkYjNiZTAtdNDNiZC0xMWU2LTlhZTkzZGQ1YjNkZmM1NjVj&max=100

A developer needs to automatically retrieve all of the messages of a Webex room with the roomId of HY2I2Y292cGFyazovL3Vz397748444YjU5NjAtNTk0ZJ0xMWVhLTk0Mj". Using the Webex API documentation shown, drag and drop the code snippets from below onto the code to complete the Python script to list all of the messages in the room. Not all options are used.



```
import requests

webex_token = "NDALOGV...f0-4434-a696-84fee4047e0a"

room_id = "Y21zV29zcGF...jUSNjAtNTk0Zi0xMmVhLTk0Mj"

url = "https://webexapis.com/v1/ [ ] [ ] =" + [ ]

payload = {}
headers = {
    'Authorization': 'Bearer ' + [ ]
}

response = requests.request("GET", url, headers=headers, data = payload)

print(response.text.encode('utf8'))
```

webex\_token room room\_id

messages? roomId messages

- A. Mastered
- B. Not Mastered

**Answer:** A

**Explanation:**

Graphical user interface Description automatically generated with medium confidence

**NEW QUESTION 107**

- (Exam Topic 2)

Which platform is used to programmatically create a space and invite users for collaboration?

- A. Cisco Intersight
- B. Cisco Finesse
- C. Cisco Webex
- D. Cisco UCM

**Answer:** C

**NEW QUESTION 109**

- (Exam Topic 2)

Which advantage does the agile process offer compared to waterfall software development?

- A. to view the full scope of end-to-end work
- B. to have each phase end before the next begins
- C. to fix any issues at the end of the development cycle
- D. to add or update features with incremental delivery

**Answer:** D

**NEW QUESTION 114**

- (Exam Topic 2)

What is used in JSON to represent a Python Tuple?

- A. Object
- B. Array
- C. Dict
- D. Collection

**Answer:** B

**NEW QUESTION 116**

- (Exam Topic 2)

How are load balancers used in modern application deployment?

- A. Allow traffic to continue as new compute units are brought up and old compute units are taken down.
- B. Allow http and https traffic to continue as old compute units are discontinued before new units are brought up.
- C. Turn off traffic and take down compute units, then update and bring the compute units back up.
- D. Bring up new compute units, test the compute units, and switch the traffic from old units to new units.

**Answer:** D

**NEW QUESTION 118**

- (Exam Topic 2)  
Refer to the exhibit.

```
$ sh script.sh
Traceback (most recent call last):
  File "script.py", line 2, in <module>
    api = WebexTeamsAPI()
  File "/opt/.venv/pyvenv35/lib/python3.5/site-packages/webexteamssdk/api/__init__.py", line 112,
in __init__
    "You must provide a Webex Teams access token to interact with "
webexteamssdk.exceptions.AccessTokenError: You must provide a Webex Teams access token to interact
with the Webex Teams APIs, either via a WEBEX_TEAMS_ACCESS_TOKEN environment variable or via the
access_token argument.
$
$
$ cat script.sh
#!/bin/bash

python script.py
$
```

Which line must be included in the Bash script for the Python code to succeed?

- A. define WEBEX\_TEAMS\_ACCESS\_TOKEN=your\_access\_token\_here
- B. export WEBEX\_TEAMS\_ACCESS\_TOKEN=your\_access\_token\_here
- C. set WEBEX\_TEAMS\_ACCESS\_TOKEN=your\_access\_token\_here
- D. WEBEX\_TEAMS\_ACCESS\_TOKEN=your\_access\_token\_here

Answer: B

### NEW QUESTION 123

- (Exam Topic 2)  
Refer to the exhibit.

```
--- README.md-repo  2019-10-06 21:15:59.000000000 +0100
+++ README.md      2019-10-06 21:07:35.000000000 +0100
@@ -88,8 +88,6 @@
    ``

-
-
  ## Troubleshooting

  ### CMake
@@ -162,4 +160,13 @@

  ## References

+### Mosquitto
+
+* [github] (https://github.com/eclipse/mosquitto)
+* [homepage] (https://mosquitto.org)
+
+### MQTT
+
+* [organisation] (http://mqtt.org)
+
```

The output of the diff-u README.md-repo README.md command is shown. The original file was 165 lines long How many lines are in the edited copy of the file?

- A. 162
- B. 165
- C. 172
- D. 173

Answer: C

### NEW QUESTION 124

- (Exam Topic 2)

What is a functionality of the Waterfall method as compared to the Agile method for software development?

- A. Waterfall increases agility to implement faster while Agile promotes reliability.
- B. A phase begins after the previous phase has ended in Waterfall while Agile phases run in parallel.
- C. Customers get feedback during the process in Waterfall while they can see the result at the end in Agile.
- D. Requirements can be updated in Waterfall while in Agile it should be gathered in the beginning.

Answer: B

#### NEW QUESTION 125

- (Exam Topic 2)

A developer created a new secure API and is testing the functionality locally. The API was added to a container for further testing, and other team members and applications need to connect to the API. Which command exposes the API in the container as port 8443 and allows connections external to the host?

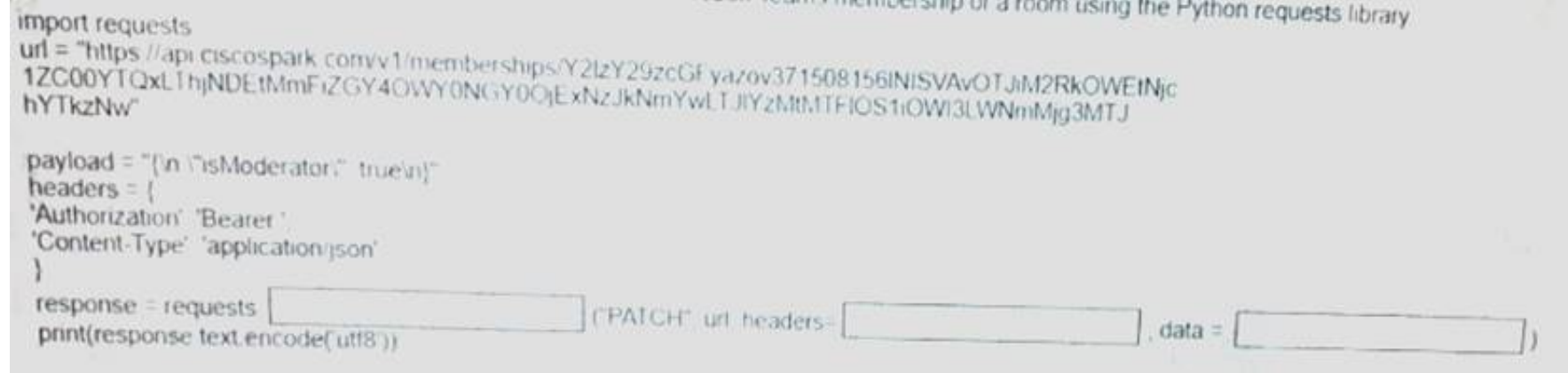
- A. docker run -p 127.0.0.1:80:8443/tcp myapiservice
- B. docker run -p 0.0.0.0:443:8443/tcp myapiservice
- C. docker run -p 0.0.0.0:8443:443/tcp myapiservice
- D. docker run -p 127.0.0.1:443:8443/tcp myapiservice

**Answer: C**

#### NEW QUESTION 126

- (Exam Topic 1)

Fill in the blanks to complete the Python script to update the Webex Teams membership of a room using the Python requests library import requests



```
import requests
url = "https://api.ciscospark.com/v1/memberships/Y2lzY29zcGFiYazov371508156INISVAvOTJhM2RkOWEiNjc1ZC00YTQxLTljNDEtMmFiZGY4OWY0NGY0QjExNzJkNmYwLTJlY2MhMTFhOS1iOWI3LWNmMjg3MTJhYTgzNw"

payload = [{"isModerator": true}]
headers = {
    'Authorization': 'Bearer ',
    'Content-Type': 'application/json'
}

response = requests. [ ] ("PATCH" url headers= [ ] data = [ ])
print(response.text.encode('utf8'))
```

- A. Mastered
- B. Not Mastered

**Answer: A**

#### Explanation:

request, headers , payload

#### NEW QUESTION 130

- (Exam Topic 1)

What are two advantages of version control software? (Choose two.)

- A. It supports tracking and comparison of changes in binary formate files.
- B. It allows old versions of packaged applications to be hosted on the Internet
- C. It provides wiki collaboration software for documentation.
- D. It supports comparisons between revisions of source code files.
- E. It allows new team members to access the current code and history.

**Answer: DE**

#### NEW QUESTION 133

- (Exam Topic 1)

Which device is a system that monitors and controls incoming and outgoing network traffic based on predetermined security rules?

- A. Switch
- B. Router
- C. Firewall
- D. Load balancer

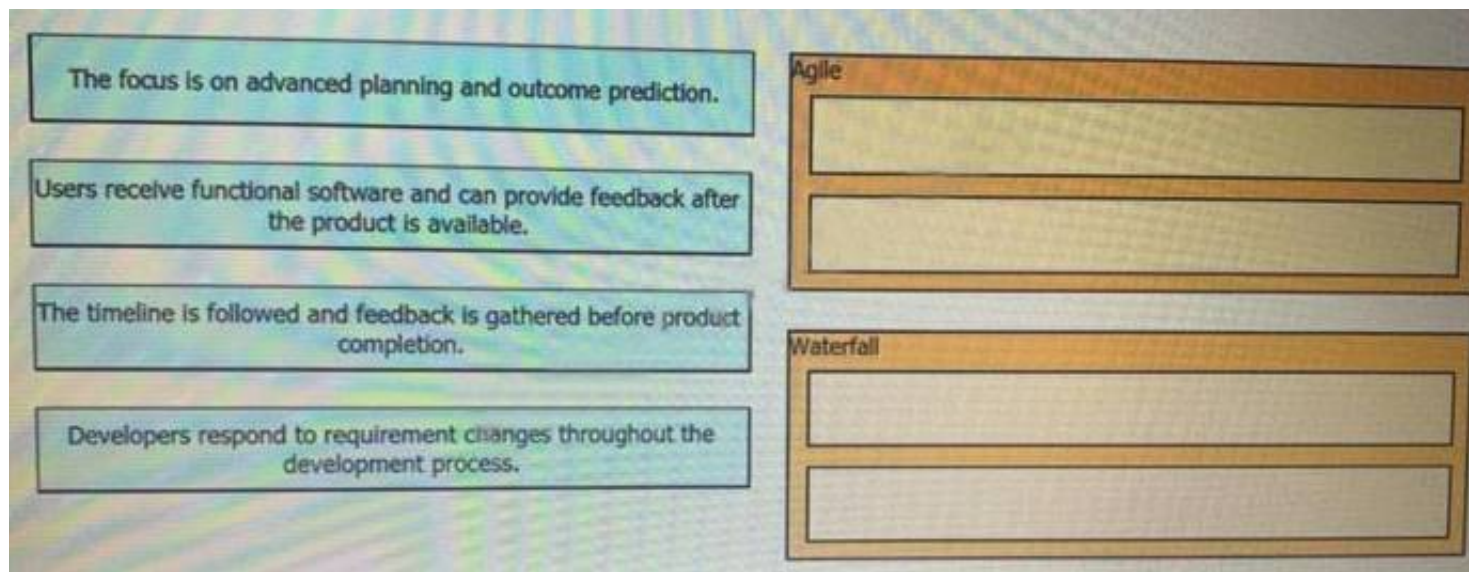
**Answer: C**

#### NEW QUESTION 136

- (Exam Topic 1)

Drag and drop the characteristics from the left onto the corresponding software development methodologies on the right?

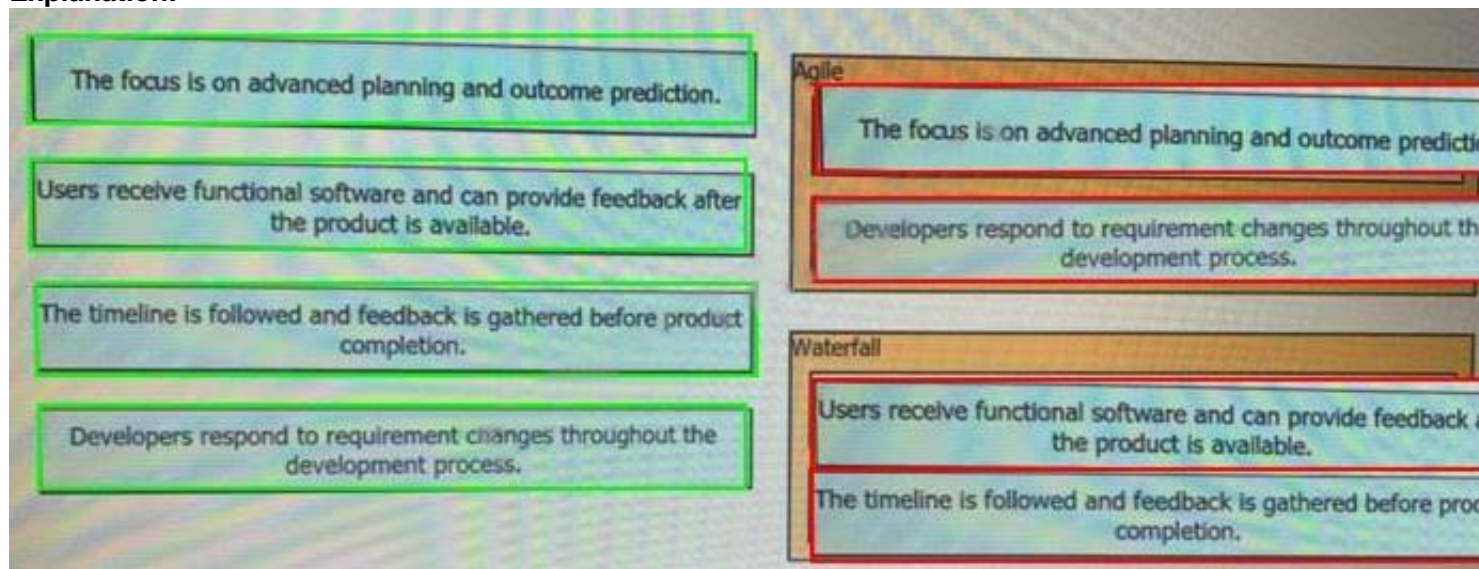




- A. Mastered
- B. Not Mastered

**Answer:** A

**Explanation:**



#### NEW QUESTION 140

- (Exam Topic 1)

A small company has 5 servers and 50 clients. What are two reasons an engineer should split this network into separate client and server subnets? (Choose two)

- A. Internet access to the servers will be denied on the router.
- B. A router will limit the traffic types between the clients and servers.
- C. Subnets will split domains to limit failures.
- D. A router will bridge the traffic between clients and servers.
- E. Subnets provide more IP address space for clients and servers.

**Answer:** AC

#### NEW QUESTION 141

- (Exam Topic 1)

In which situation would an edge computing solution be used?

- A. where low latency is needed
- B. where high CPU throughput is needed
- C. where fast memory is needed
- D. where high disk space is needed

**Answer:** A

#### NEW QUESTION 142

- (Exam Topic 1)

Which CI/CD tool is an automation tool used to build, test, and deploy software?

- A. Nagios
- B. Gradle
- C. Jenkins
- D. Git

**Answer:** C

**Explanation:**

Reference:

<https://www.infoworld.com/article/3271126/what-is-cicd-continuous-integration-and-continuous-delivery-expla>

#### NEW QUESTION 143

- (Exam Topic 1)

How does requesting a synchronous API operation differ from requesting an asynchronous API operation?

- A. clients poll for the status of the execution of operations
- B. clients subscribe to a webhook for operation results
- C. clients can access the results immediately
- D. clients receive responses with a task id for further processing

**Answer:** C

#### NEW QUESTION 145

- (Exam Topic 1)

What are two security benefits of a Docker-based application?

- A. easier to patch because Docker containers include only dependencies that the application requires
- B. prevents information leakage that can occur when unhandled exceptions are returned in HTTP responses
- C. allows for separation of application that traditionally run in the same host
- D. natively secures access to secrets that are used by the running application
- E. guarantees container images are secured and free of vulnerabilities

**Answer:** AC

#### NEW QUESTION 150

- (Exam Topic 1)

What is an example of a network interface hardware address?

- A. domain name
- B. IP address
- C. workstation name
- D. MAC address

**Answer:** D

#### NEW QUESTION 155

- (Exam Topic 1)

Which model-driven programmability protocol does Cisco IOS XE Software support?

- A. CORBA
- B. SSH
- C. gNMI
- D. SOAP

**Answer:** C

#### Explanation:

Reference:

[https://www.cisco.com/c/en/us/td/docs/ios-xml/ios/prog/configuration/1610/b\\_1610\\_programmability\\_cg/gnmi\\_](https://www.cisco.com/c/en/us/td/docs/ios-xml/ios/prog/configuration/1610/b_1610_programmability_cg/gnmi_)

#### NEW QUESTION 159

- (Exam Topic 1)

The project is migrated to a new codebase, the “old\_project” directory must be deleted. The directory has multiple read-only files, and it must be deleted recursively without prompting for confirmation. Which bash command must be used?

- A. `rm -rf old_project`
- B. `rm -r old_project`
- C. `rmdir -p old_project`
- D. `rmdir old_project`

**Answer:** A

#### NEW QUESTION 163

- (Exam Topic 1)

Which description of a default gateway is true?

- A. It is a device that receives IP packets that have no explicit next-hop in the routing table.
- B. It is a feature that translates between public and private addresses.
- C. It is a security feature that denies certain traffic.
- D. It is a device that receives Layer 2 frames with an unknown destination address.

**Answer:** A

#### Explanation:

Refe

<https://www.certificationkits.com/cisco-certification/ccna-articles/cisco-ccna-intro-to-routing-basics/cisco-ccna>

#### NEW QUESTION 167

- (Exam Topic 1)

Which two concepts describe test-driven development? (Choose two.)

- A. It enables code refactoring.
- B. Write a test before writing code.
- C. Implementation is driven by incremental testing of release candidates.
- D. User acceptance testers development the test requirements.
- E. Tests are created when code is ready for release.

**Answer:** BC

**Explanation:**

[https://www.tutorialspoint.com/software\\_testing\\_dictionary/release\\_candidate.htm](https://www.tutorialspoint.com/software_testing_dictionary/release_candidate.htm)

#### NEW QUESTION 168

- (Exam Topic 1)

Which type of HTTP method is used by the Meraki nad webex teams APIs to send webhook notifications?

- A. HTTP GET
- B. HTTP PUT
- C. HTTP HEAD
- D. HTTP POST

**Answer:** D

**Explanation:**

Reference: <https://meraki.cisco.com/blog/tag/alerts/>

#### NEW QUESTION 169

- (Exam Topic 1)

What is the purpose of a MAC address?

- A. To uniquely identify a router in a LAN
- B. To uniquely identify a network interface in a LAN
- C. To uniquely identify a device on the internet
- D. To uniquely identify a switch in a LAN

**Answer:** B

#### NEW QUESTION 170

- (Exam Topic 1)

Refer to the exhibit.

**URL:** [https://<ASA\\_IP>/api/access/global/rules](https://<ASA_IP>/api/access/global/rules)  
**Method:** POST  
**Payload:**

```
{
  "destinationAddress": {
    "kind": "IPv4Address",
    "value": "10.1.1.1"
  },
  "remarks": [ ],
  "active": true
  "permit": true,
  "sourceAddress": {
    "kind": "IPv4Address",
    "value": "192.168.1.1"
  }
}
```

**Response Status Code:** 400 Bad Request

**Messages:** [{"level": "Error", "code": "JSON-PARSE-ERROR", "details": "Unexpected character ('\"' (code 34)):"}]

What caused the error in this API request?

- A. The API resource does not support the POST operation.
- B. The API resource does not support JSON format payloads.
- C. The submitted JSON payload includes a field that is not supported by the API resources.
- D. The submitted JSON payload has a formatting issue.

**Answer:** D



#### NEW QUESTION 171

- (Exam Topic 1)

A function my\_func() returns True when it executes normally. Which python snippet tests my\_func()?

- ☐

```
def test_func(self):
    self.assertTrue(my_func())
```
- ☒

```
def test_func(self):
    self.assertRaises(my_func())
```
- ☐

```
def test_func(self):
    self.assertEqual(my_func(), '{true}')
```
- ☐

```
def test_func(self):
    self.assertFalse(my_func())
```

- A. Option A
- B. Option B
- C. Option C
- D. Option D

**Answer:** B

#### NEW QUESTION 175

- (Exam Topic 1)

Which two types of NAT are used in a network? (Choose two.)

- A. Static NAT
- B. Normal NAT
- C. Multicast NAT
- D. Dynamic NAT
- E. Router NAT

**Answer:** AD

#### Explanation:

Reference: <https://www.dummies.com/programming/networking/cisco/types-of-network-address-translation/>

#### NEW QUESTION 176

- (Exam Topic 1)

Which Cisco DevNet resource allows access to products in a development lab to explore, learn, and build application that use Cisco APLs?

- A. DevNet communities
- B. DevNet code Exchange
- C. DevNet Automation Exchange
- D. DevNet sandbox

**Answer:** D

#### Explanation:

Reference: <https://developer.cisco.com/site/sandbox/>

#### NEW QUESTION 180

- (Exam Topic 1)

Which statement describes the benefit of using functions in programming?

- A. Functions allow problems to be split into simpler, smaller groups, and reduce code repetition, which makes the code easier to read.
- B. Functions ensure that a developer understands the inner logic contained before using them as part of a script or application.
- C. Functions create the implementation of secret and encrypted algorithms.
- D. Functions store mutable values within a script or application.

**Answer:** A

#### NEW QUESTION 184

- (Exam Topic 1)

What is the outcome of executing this command?

git clone ssh://john@example.com/path/to/my-project\_git

- A. Creates a local copy of a repository called "my project"
- B. Creates a copy of a branch called "my project"
- C. Initiates a new Git repository called "my project"

D. Creates a new branch called “my project”

**Answer:** A

**Explanation:**

Reference: <https://www.atlassian.com/git/tutorials/setting-up-a-repository/git-clone>

#### NEW QUESTION 185

- (Exam Topic 1)

Drag and drop the HTTP status codes from the left onto the correct descriptions on the right.

400	Unauthorized
401	Not Found
403	Bad Request
404	Forbidden

A. Mastered

B. Not Mastered

**Answer:** A

**Explanation:**

1 – B, 2 – D, 3 – A, 4 – C

Reference:

<https://www.cisco.com/c/en/us/support/docs/security/web-security-appliance/118217-troubleshoot-wsa-00.html>

#### NEW QUESTION 188

- (Exam Topic 1)

Which two protocols are used to apply a configuration change on a Cisco IOS XE device? (Choose two)

A. CCX

B. RESTCONF

C. NETCONF

D. HSRP

E. CDP

**Answer:** BC

#### NEW QUESTION 193

- (Exam Topic 1)

Drag and drop the Python code from the left onto the correct step on the right to call a REST API.

<pre>response = requests.post(url, data=json.dumps(payload), \ headers=header, verify=False)</pre>	Step 1 – Import the correct libraries.
<pre>ticket = r_json["Token"] print(ticket)</pre>	Step 2 – Declare the necessary variable.
<pre>(_json = response.json() print(r_json)</pre>	Step 3 – Send the HTTP Request.
<pre>import requests import json</pre>	Step 4 – Format and display the response in JSON readable format.
<pre>controller = 'devnetapi.cisco.com/sandbox/dnacenter' url = 'https://' + controller + '/dna/system/api/v1/auth/token' payload = { 'username': 'devnetuser', 'password': 'pa55word' } header = { 'Content-type': 'application/json' }</pre>	Step 5 – Parse the response to display the Service Ticket.

A. Mastered

B. Not Mastered

Answer: A

Explanation:

<pre>response = requests.post(url, data=json.dumps(payload), \ headers=header, verify=False)</pre>	<pre>import requests import json</pre>
<pre>ticket = r_json["Token"] print (ticket)</pre>	<pre>controller = 'devnetapi.cisco.com/sandbox/dnacenter' url = 'https://' + controller + '/dna/system/api/v1/auth/token' payload = { 'username': 'devnetuser', 'password': 'pa55word' } header = { 'Content-type': 'application/json' }</pre>
<pre>_json = response.json() print(r_json)</pre>	<pre>response = requests.post(url, data=json.dumps(payload), \ headers=header, verify=False)</pre>
<pre>import requests import json</pre>	<pre>_json = response.json() print(r_json)</pre>
<pre>controller = 'devnetapi.cisco.com/sandbox/dnacenter' url = 'https://' + controller + '/dna/system/api/v1/auth/token' payload = { 'username': 'devnetuser', 'password': 'pa55word' } header = { 'Content-type': 'application/json' }</pre>	<pre>ticket = r_json["Token"] print (ticket)</pre>

#### NEW QUESTION 194

- (Exam Topic 1)

Drag and Drop the Bash commands from the left onto the correct actions on the right.

cd~	list files in directory sorted by edited date descending
cd/	create directory
ls -l	copy file
ls -t	change directory to user \$HOME
cp	create environment variable
cp -r	change directory to file system root
mv	move file
touch	create file
mkdir	copy directory
export	list files in directory with details

A. Mastered

B. Not Mastered

Answer: A

Explanation:

1 - d, 2 - i, 3 - e, 4 - a, 5 - j, 6 - b, 7 - g, 8 - h, 9 - c, 10 - f

#### NEW QUESTION 198



- (Exam Topic 1)

What is the Git command to delete a local branch named "experiment" without a warning?

- A. git branch -n experiment
- B. git branch -rm experiment
- C. git branch -f experiment
- D. git branch -D experiment

**Answer: D**

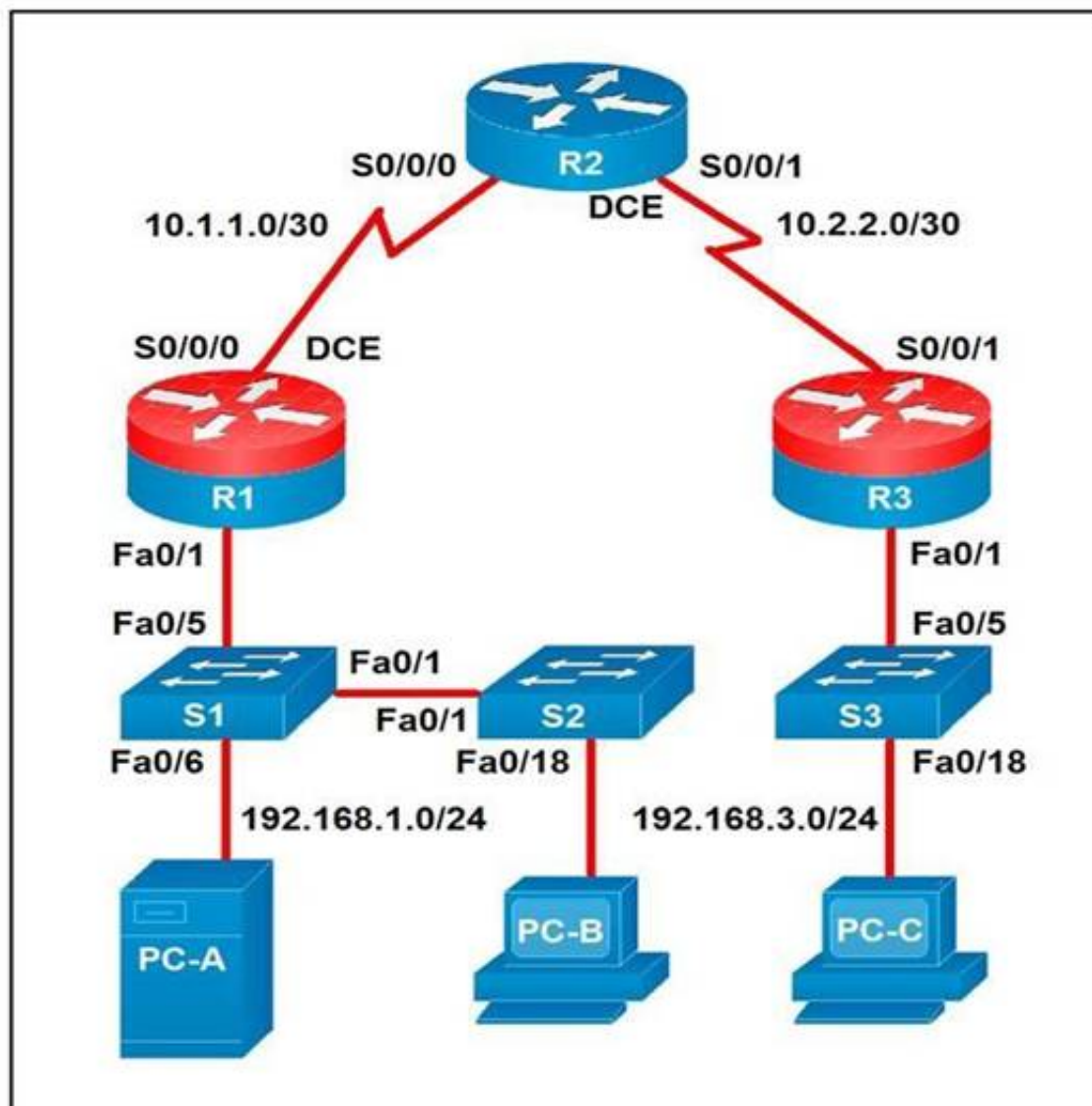
**Explanation:**

Reference: <https://www.atlassian.com/git/tutorials/using-branches>

#### NEW QUESTION 200

- (Exam Topic 1)

Refer to the exhibit.



Which two statements about the network diagram are true? (Choose two.)

- A. PC-A and PC-B are in the same subnet.
- B. One of the routers has two connected serial interfaces.
- C. The subnet of PC-C can contain 256 hosts.
- D. R1 and R3 are in the same subnet.
- E. The subnet address of PC-B has 18 bits dedicated to the network portion.

**Answer: BC**

#### NEW QUESTION 205

- (Exam Topic 1)

Refer to the exhibit.

A -

bash-3.2\$ curl -H "Content-Type: application/json" -H "Authorization: Bearer Fj2zzykEa09lic9GK2j8LtE1HklH6oRHPQdw1Pat60i7ndtHHnWzL2b5PQmG14Kk\_B9ei5ISAClY7-NarA-2n9H-tGgt-SxQ39iDejgcs" -i -d "{ \"roomId\": \"Y2geK53sjELknosrC7SwQ5ZGL99pHgiuScB7DfNvUshr8Xx4wDKLiPORcEkryAnM3QmK9LQZsPOG4\", \"text\": \"test2\" }" -X POST https://api.ciscopark.com/v1/messages

B -

C -

D -

HTTP/1.1 200 OK  
Via: 1.1 linker  
Transfer-Encoding: chunked  
TrackingID: ROUTER\_5E0FE283-63EB-01BB-00ED-806BF1BD00ED

E -

Date: Sat, 01 Jan 2020 00:55:31 GMT  
Server: Redacted  
Content-Type: application/json; charset=UTF-8  
Vary: Accept-Encoding  
Strict-Transport-Security: max-age=63072000; includedSybDomains; preload

F -

{\"id\":\"YCPjF3aVovyBYcbn7lSdesNkKcgN5tlExdc6dcnPtl4Va05NfCh9MG17j0tWXQLoIPuoJ73uu7JdoXq9\", \"roomId\":\"Y2geK53sjELknosrC7SwQ5ZGL99pHgiuScB7DfNvUshr8Xx4wDKLiPORcEkryAnM3QmK99LQZsPOG4\", \"roomType\":\"group\", \"text\":\"test2\", \"personId\":\"YcgYzL6Xgtyfw81XXwqfKf7whfj23KuqWt4kLWkbb3JwEJBlVMZOkIvyDdFoppb0einNj111FcMyy5wD\", \"personEmail\":\"user@webex.com\", \"created\":\"2020-01-01T00:55:32.492Z\"}

Drag and drop the descriptors from the left onto the correct parts of the API request and response on the right.

Response Headers	A
HTTP Request	B
HTTP Response	C
Request Payload	D
Request Headers	E
Response Payload	F

- A. Mastered
- B. Not Mastered

Answer: A

Explanation:

A – E, B – D, C – B, D – C, E – A, F – F

#### NEW QUESTION 207

- (Exam Topic 1)

A 401 HTTP response code is returned when calling a REST API. What is the error state identified by this response code?

- A. The server cannot process the request as it has detected an issue in the request syntax or body.
- B. The server accepted the request but the client is not authorized for this content.
- C. The request has not been accepted because it requires authentication.
- D. The server cannot find the requested resource because the path specified is incorrect.

Answer: C

Explanation:

Reference:

https://blog.restcase.com/rest-api-error-codes-101/#:~:text=A%20401%20error%20response%20indicates,crede

#### NEW QUESTION 211

- (Exam Topic 1)

Which is an advantage of using network programmability?

- A. It removes CLI access for devices.
- B. It provides for more scalable and replicable network provisioning.
- C. Manual configuration is faster.
- D. No cloud abstraction occurs.

**Answer:** B

#### NEW QUESTION 214

- (Exam Topic 1)

Which platform is run directly using a hypervisor?

- A. Virtual
- B. Bare metal systems
- C. Containers
- D. Applications

**Answer:** C

#### NEW QUESTION 219

- (Exam Topic 1)

What are two roles of an artifact repository in a CI/CD pipeline? (Choose two.)

- A. is required for CI/CD pipelines executed on a public cloud infrastructure
- B. is required for managing open source software
- C. stores files needed and generated during the build process
- D. allows for comparing and merging changes in the source code
- E. provides traceability, search, and management of binary files

**Answer:** CE

#### NEW QUESTION 221

- (Exam Topic 1)

Refer to the exhibit.

```
$ pyang -f tree Cisco-IOS-XE-native.yang
module: Cisco-IOS-XE-native
  +--rw native
    +--rw logging
      +--rw monitor|
        +--rw severity?  logging-level-type

$ curl --insecure -v -X PATCH \
  "https://ios-xe-mgmt-latest.cisco.com:9443/restconf/data/Cisco-IOS-XE-native:native" \
  -H 'Authorization: Basic ZGV2ZWxvcGVyOkMxc2NvMTIzNDU=' -H 'Accept: application/yang-data+json' \
  -H 'Content-Type: application/yang-data+json' \
  -d '{ "Cisco-IOS-XE-native:native" : { "logging" : { "monitor" : { "severity" : "alerts" }} } }'
> ...
< ...
< HTTP/1.1 204 No Content
```

The definition of the YANG module and a RESTCONF query sent to a Cisco Ioc XE device is shown. Which statement is correct if the RESTCONF interface responds with a 204 status code?

- A. The query failed at retrieving the logging seventy level.
- B. The query failed to set the logging seventy level due to an invalid path.
- C. The query retrieved the logging seventy level.
- D. The query updated the logging seventy level or created it if not present on the device.

**Answer:** D

#### Explanation:

Reference:

[https://www.cisco.com/c/en/us/td/docs/ios-xml/ios/prog/configuration/1611/b\\_1611\\_programmability\\_cg/restco](https://www.cisco.com/c/en/us/td/docs/ios-xml/ios/prog/configuration/1611/b_1611_programmability_cg/restco)

#### NEW QUESTION 223

.....



## THANKS FOR TRYING THE DEMO OF OUR PRODUCT

Visit Our Site to Purchase the Full Set of Actual 200-901 Exam Questions With Answers.

We Also Provide Practice Exam Software That Simulates Real Exam Environment And Has Many Self-Assessment Features. Order the 200-901 Product From:

<https://www.2passeasy.com/dumps/200-901/>

## Money Back Guarantee

### 200-901 Practice Exam Features:

- \* 200-901 Questions and Answers Updated Frequently
- \* 200-901 Practice Questions Verified by Expert Senior Certified Staff
- \* 200-901 Most Realistic Questions that Guarantee you a Pass on Your FirstTry
- \* 200-901 Practice Test Questions in Multiple Choice Formats and Updatesfor 1 Year