

# HP

## Exam Questions HPE6-A70

Implementing Aruba WLAN (IAW) 8.4



### NEW QUESTION 1

Refer to the exhibits. Exhibit 1

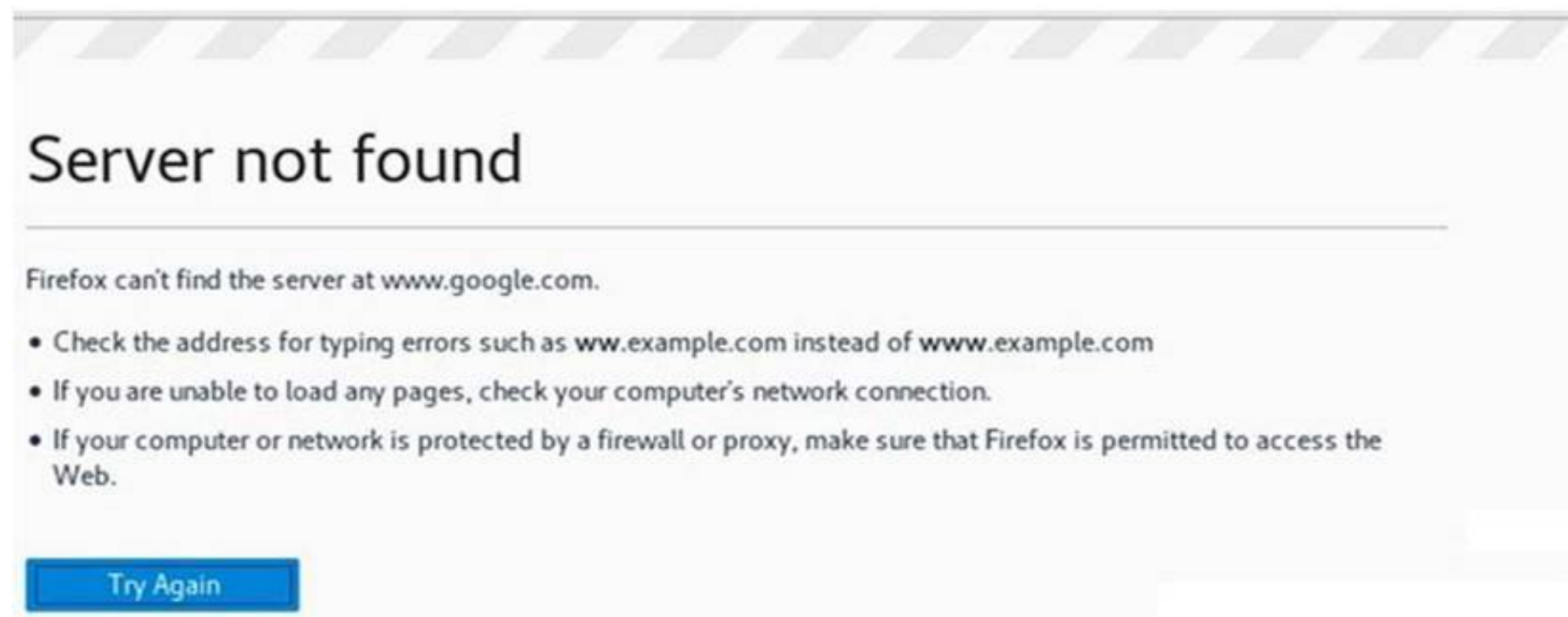


Exhibit 2

Clients (1)								
Client	Health(%)	IP Address	Band	Radio PHY	Client PHY	Device	Role	Forward Mode
d8:50:e60:f3:6e:bd	98	192.168.99.2	5GHz	VHT 80 MHz	VHT 80 MHz	Unknown	exam_g...t-logon	Tunnel

A company has a Mobility Master (MM)-based solution with a guest WLAN. Users can connect to the WLAN, but they receive the error shown browser rather than see login page. Exhibit 2 shows the status for one of the guest clients.

What is one issue that could cause the errors described?

- A. The firewall blocks DHCP traffic between the guest clients and the DHCP server.
- B. The DHCP pool for guests does not assign users a DNS server address.
- C. The MM and Mobility Controllers (MCs) have invalid certificates.
- D. The Captive Portal is not enabled for the role to which these clients are assigned.

**Answer:** B

### NEW QUESTION 2

How can network administrator provide high availability for APs deployed in an Aruba Mobility Master (MM)-based architecture?

- A. Establish clusters of Mobility Controllers (MCs).
- B. Configure MM to provide backup AP tunnel termination in case of controller failure.
- C. Deploy all licenses locally yo APs, so that they can continue to function if they lose contact with their controller.
- D. Configure APs to convert to controller-less Instant AP mode during controller failure.

**Answer:** A

### NEW QUESTION 3

A Mobility Controller (MC) runs ArubaOS 8. What is a valid reason for an administrator to set the MC to master-local mode?

- A. The company already has a partially hierarchical deployment based on the 6.x code and wants to keep the current architecture.
- B. The company needs to manage third-party network infrastructure devices with the use of the master controller interface.
- C. The company wants a deployment architecture that allows administrators to configure all MC settings from a single location.
- D. The company requires a centralized licensing architecture that provides global license pools.

**Answer:** A

### NEW QUESTION 4

A network administrator examines a list of 2.4GHz clients with low performance in the Mobility Master (MM) dashboard. Which property for a client should pose a concern as a potential performance issue?

- A. Radio PHY of HT 20MHz
- B. Max speed of 72Mbps
- C. SNR of 18
- D. Usage of 10 MB

**Answer:** C

### NEW QUESTION 5

A network administrator has installed PEF licenses in the global pool of a Mobility Master (MM) solution. When the administrator tries to configure roles and policies, an error indicates that the PEF licenses must be installed.

What should the administrator do to correct this issue?

- A. Ensure the PEF licenses were installed at the Managed Network and not at the MM level.
- B. Enable Building 1 as a local license pool.
- C. Enable the PEF feature in the Global Usage window.
- D. Activate the PEF licenses through an Aruba Activate account.

**Answer:** A

#### **NEW QUESTION 6**

A company has an Aruba solution and wants to provide guests with wireless access. The company wants to assign guests IP addresses in subnets that exist only within the Aruba solution.

Which feature should network administrators set up so guests can send traffic on the Internet without changes to the company routing solution?

- A. Enable NAT on the VLAN assigned to the guest WLAN.
- B. Set up a dynamic default gateway on the Mobility Controllers (MCs).
- C. Create destination NAT rules for the guest role.
- D. Enable policy-based routing for the guest traffic.

**Answer:** A

#### **NEW QUESTION 7**

A network administrator wants to implement MAC filtering for the wireless network of a local financial firm to ensure that only employees can access the wireless network. What is a potential weakness of this solution?

- A. MAC filters cannot be applied with WPA2 encryption.
- B. Authorized MAC addresses are visible in plaintext in the air and can be easily spoofed.
- C. Many popular clients do not have the capability to connect to WLANs that use MAC filters.
- D. MAC filters offer no protection against authorized users who try to connect unauthorized devices.

**Answer:** B

#### **NEW QUESTION 8**

A company has an Aruba solution. A network administrator wants to prevent wireless users from accessing shopping web sites with a bad reputation. What should the administrator set up to deny such traffic?

- A. an AppRF engine
- B. application filters in the Traffic Analysis dashboard
- C. firewall access control rules that specify HTTP and HTTPS services
- D. firewall application rules

**Answer:** D

#### **NEW QUESTION 9**

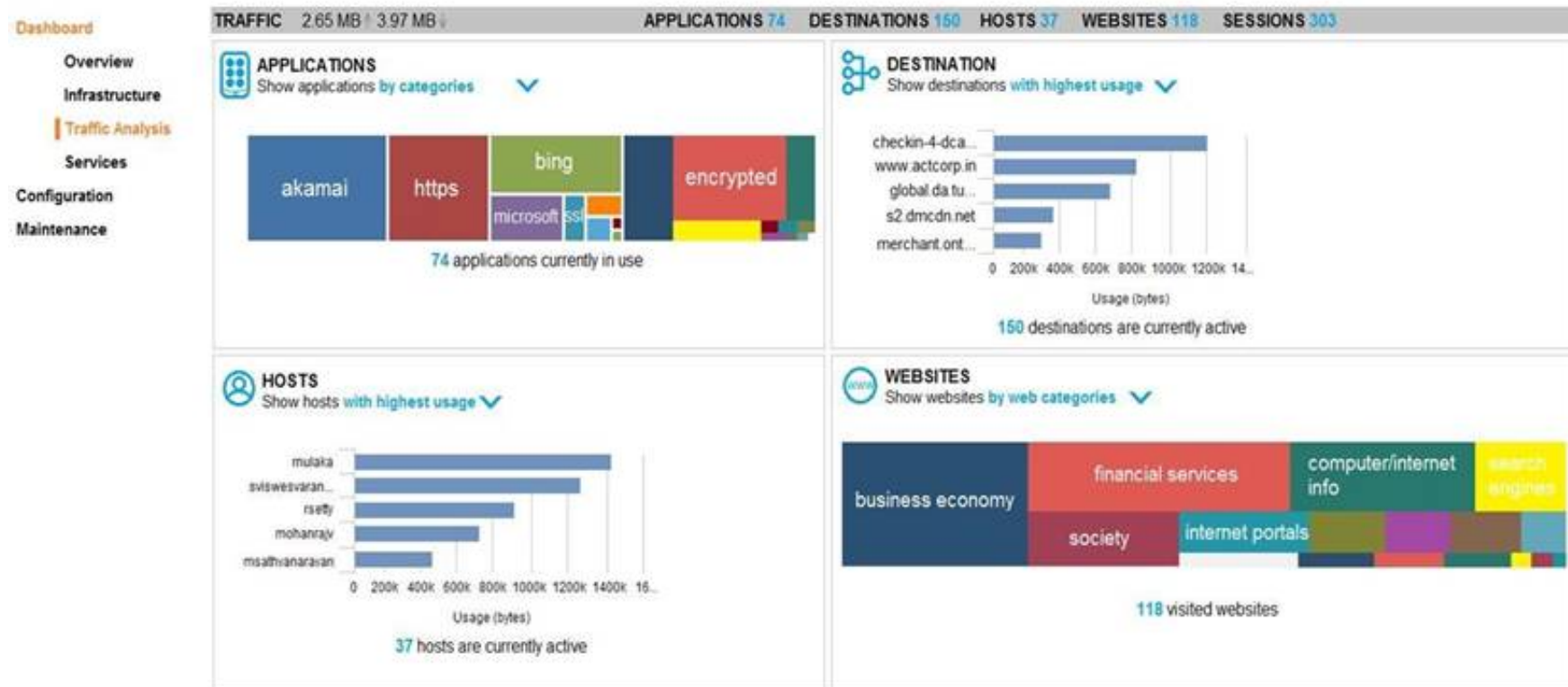
An Aruba Mobility Master (MM)-based solution has a WLAN that uses WPA2-Enterprise security. A test login on a wireless client fails. How can a network administrator determine whether the RADIUS server rejected the credentials or another issue occurred?

- A. View Technical Support information for the MM.
- B. Ping the IP address configured as the RADIUS server.
- C. Use the MM AAA Server Test Diagnostic tool.
- D. Use the tools in the MM Dashboard > Security window.

**Answer:** C

#### **NEW QUESTION 10**

Refer to the exhibit.



The exhibit shows output from a Mobility Master (MM) dashboard. What is a valid reason for the administrator to click the akamai square under applications?

- A. to see the break down for only the roles, destinations, WLANs, and devices that use this application
- B. to download a report about the usage of this application over time
- C. to create filter rules in order to control wireless user access to this application
- D. to set up bandwidth rule in order to control wireless user access to this application

**Answer: A**

#### NEW QUESTION 10

Network administrators use the wizard to create a WLAN that uses WPA2-Enterprise security to a RADIUS server at 10.21.98.55. They do not manually change any settings.

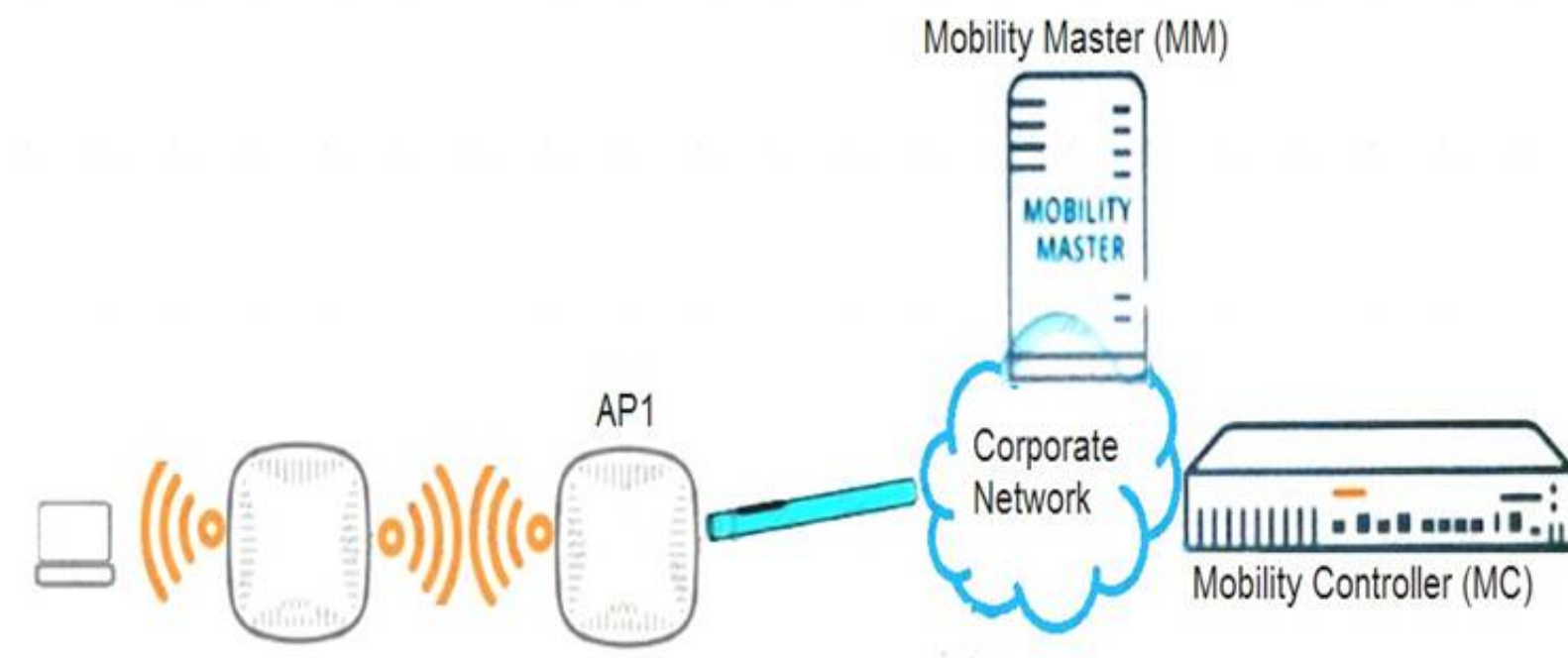
Which device determines the EAP type that the wireless clients must support?

- A. Mobility Master (MM)
- B. Mobility Controller (MC)
- C. RADIUS server
- D. AP

**Answer: C**

#### NEW QUESTION 12

Refer to the exhibit.



Which role must AP1 play?

- A. Instant AP (IAP)
- B. Mesh Point AP
- C. Mesh Portal AP
- D. Remote AP (RAP)

**Answer: C**

#### NEW QUESTION 16

A network administrator creates the role employees and adds the rule to it: user any any permit

The first several wireless clients assigned to the employees role are assigned IP addresses in the 10.10.10.0/24 subnet. Several other wireless clients with the employees role are then assigned IP addresses in the 10.10.20.0/24.

When the Aruba firewall matches traffic from these clients to the user any any permit rule, what does it do?

- A. It drops traffic from wireless clients in both the 10.10.0/24 subnet and 10.10.20.0/24 subnet.
- B. It permits traffic from wireless clients in both the 10.10.10.0/24 and 10.10.20.0/24 subnet as long as the packet has a source IP.
- C. It permits the traffic from wireless clients in the 10.10.20.0/24 subnet, but drops the traffic from wireless clients in the 10.10.10.0/24 subnet.
- D. It permits the traffic from wireless clients in the 10.10.0/24 subnet, but drops the traffic from wireless clients in the 10.10.20.0/24 subnet.

**Answer: B**

#### NEW QUESTION 21

A company wants to provide wireless access for guests with their Aruba solution. Which configuration feature requires the customer to purchase PEFNG licenses?

- A. redirection of guests to an external captive portal
- B. provision of DHCP services to unauthenticated guests
- C. addition of custom rules to control access for authenticated guests
- D. customization of the internal captive portal login page

**Answer: C**

#### NEW QUESTION 23

A company plans to deploy a Mobility Master (MM) solution with two MM nodes. The MM solution will manage 20 Mobility Controller (MC) appliances that will control a total of 800 APs.

How should the network administrator install the AP licenses?

- A. 40 AP licenses on the MM
- B. 400 AP licenses on the MM
- C. 800 AP licenses on each MC
- D. 800 AP licenses on the MM and 40 AP licenses on each MC

**Answer: A**

#### NEW QUESTION 24

What is an example of a Layer2 wireless threat that a wireless intrusion detection system (WIDS) should detect?

- A. 802.11 association floods
- B. RF jamming
- C. Bluetooth interference
- D. spyware

**Answer: A**

#### NEW QUESTION 29

A network administrator uses a wireless intrusion detection system (WIDS) to detect 802.11 association floods. At which layer do these attacks occur?

- A. Layer 1
- B. Layer 2
- C. Layer 3
- D. Layer 7

**Answer: B**

#### NEW QUESTION 32

A company has an Aruba solution that is monitored by AirWave. Several users have recurring connectivity and performance issues with their wireless clients.

How can network administrators use AirWave to minitor these clients more easily?

- A. Specify the clients as Watched Cliesnts and view the tables and graphs for these clients.
- B. Click the Down icon in the Airwave banner to quickly see a list of issues with client connections.
- C. Use the Client > Tags windows to tag the client for periodic checks and analysis.
- D. Run Device Summary reports and filter for the client MAC addresses within the report.

**Answer: B**

#### NEW QUESTION 36

How does a high-gain omni-directional antenna compare to a typical omni-directional antenna?

- A. it provides more multi-user spatial streams.
- B. it provides more coverage in the horizontal direction than in the vertical direction.
- C. it provides more single-user spatial streams.
- D. it provides more coverage in both the horizontal and vertical directions.

**Answer: B**

#### NEW QUESTION 37

A company deploys an Aruba wireless solution for the first time. In which deployment is clustering supported?



- A. deployment as Mobility Masters (MMs)
- B. deployment as a standalone VMC
- C. deployment in 7000 Series standalone mode
- D. deployment in master-local mode

**Answer:** A

#### NEW QUESTION 38

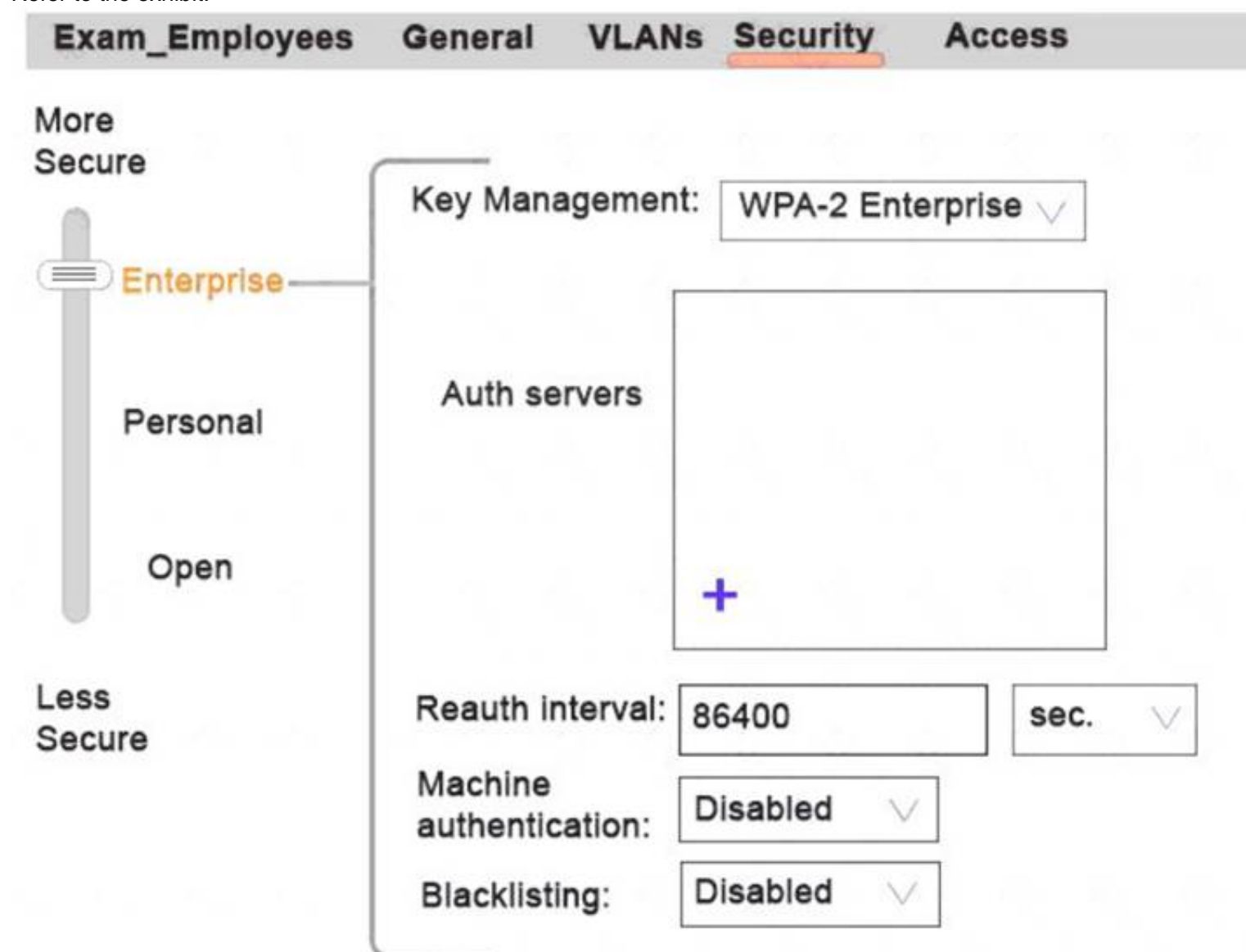
What is one reason for a network administrator to visit the Dashboard > Usage window on an Aruba Mobility Master (MM)?

- A. to check license usage and determine the need for additional licenses
- B. to analyze short terms trends in network usage by client, AP, and application
- C. to view system usage statistics for the MM and troubleshoot potential issues
- D. to generate reports about traffic patterns and network usage over the past several months

**Answer:** B

#### NEW QUESTION 42

Refer to the exhibit.



Network administrators need to set up a WLAN that uses WPA2 encryption and authenticates users with a preshared key (PSK) that is the same for all users. Administrators do not see where they should specify the option for the preshared key. What should the administrators do?

- A. Click Personal in the slide bar.
- B. Click the + icon in the Authentication server section
- C. Return to the first page in the wizard and select the guest option
- D. Configure an L3 authentication profile after the WLAN wizard is complete

**Answer:** A

#### NEW QUESTION 47

What is a key difference between an Aruba Air Monitor (AM) and an Aruba Spectrum Analyzer (SA)?

- A. An AM detects threats such as rogue APs, while an SA analyzes RF conditions.
- B. An AM detects rogue APs and provides data services to clients, while an SA only detects rogue APs.
- C. An AM scans on only one 802.11 frequency band, while an SA scans on both 802.11 frequency bands.
- D. An AM both detects wireless intrusion attempts and mitigates them, while an SA only detects wireless intrusion attempts.

**Answer:** A

#### NEW QUESTION 48

What is one setting that a network administrator can configure for user roles in an Aruba solution?

- A. DHCP pool
- B. ClientMatch rules

- C. source NAT
- D. Maximum session

**Answer:** D

#### NEW QUESTION 52

A company plans to deploy a Mobility Master (MM). The MM will manage 50 Mobility Controller (MC) appliances that will control a total of 700 APs, and 10 Virtual Mobility Controllers (VMCs) that will control a total of 200 APs.  
How many MM licenses does the company require?

- A. 60
- B. 210
- C. 900
- D. 960

**Answer:** D

#### Explanation:

Starting with ArubaOS 8.0.1, the MM license is required to terminate devices (controllers or APs) on Mobility Master. If the Mobility Master does not have sufficient MM licenses and an AP fails to obtain a license, that AP can get an IP address and connect to its controller, but will not broadcast an SSID.

#### NEW QUESTION 54

An Aruba solution has a WLAN that uses WPA2-Personal security. How are encryption keys dynamically managed for the wireless users?

- A. The MM generates and distributes keys to clients and access points (APs).
- B. Administrators configure identical key strings on the Mobility Controllers (MCs) and wireless client 802.1X settings.
- C. Keys are generated and distributed securely during each wireless user authentication process.
- D. Keys are derived from the preshared key configured on the WLAN and on each wireless client.

**Answer:** D

#### NEW QUESTION 56

Which Aruba controller supports a maximum of 512 APs?

- A. Aruba 7010
- B. Aruba 7030
- C. Aruba 7210
- D. Aruba 7240

**Answer:** C

#### NEW QUESTION 61

An Aruba Mobility Master (MM)-based solution has two Virtual MM nodes, a primary and a backup node. The solution must support 30 Virtual Mobility Controllers (VMCs) that will support a total of 960 APs.  
Which VMC licenses meet the needs and DO NOT unnecessarily exceed them?

- A. two 1000 VMC licenses (MC-VA-1000)
- B. one 1000 VMC license (MC-VA-1000)
- C. two 50 VMC licenses (MC-VA-50)
- D. one 50 VMC license (MC-VA-50)

**Answer:** B

#### NEW QUESTION 63

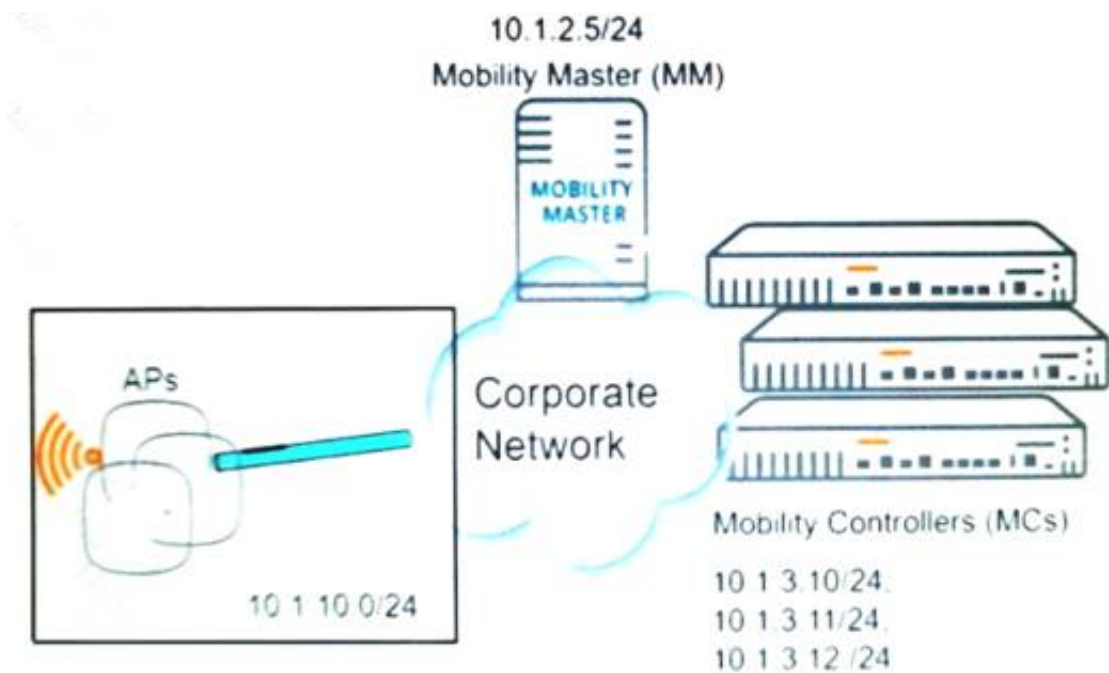
A company has a Mobility Master (MM) solution that manages Mobility Controllers (MCs) in several groups. The company has several WebCC licenses and wants to reserve these licenses for MCs in the Sunnyvale group only.  
How can a network administrator achieve this goal?

- A. Associate the MAC addresses for the Sunnyvale MCs with the licenses when they are generated.
- B. Make sure to be at the Managed Network > Sunnyvale level in the MM Interface when the licenses are installed.
- C. Install the licenses on the MM, and allocate them to a dedicated local pool for the Sunnyvale group.
- D. Install the licenses directly on the MCs in the Sunnyvale group, and activate the licenses locally.

**Answer:** C

#### NEW QUESTION 66

Refer to the exhibit.



What is a valid way to help the APs discover devices that can control them?

- A. Set up an Aruba Central subscription, and ensure that APs can reach the Internet.
- B. Enable CPSec, and ensure the Mobility Master (MM) and Mobility Controllers (MCs) trust the Aruba certificates installed on the APs at the factory.
- C. Specify the Mobility Master (MM) IP address in DHCP option 43 on the network DHCP server.
- D. Map the Mobility Controller (MC) IP addresses to the aruba-master name on the network DNS server.

Answer: D

NEW QUESTION 67

Refer to the exhibit.

Usage Mobility Master Licenses Controller Licenses							
	AP	PEF	RF Protect	ACR	WEbCC	MM	VMC
Global License Pool	1/32	0/32	0/32	0/0	0/0	2/500	0/0
Building1	0	0	0	0	0	0	0

Based on the exhibit, what is the maximum number of APs that this Mobility Master (MM) solution can support?

- A. 1
- B. 32
- C. 500

Answer: C

NEW QUESTION 68

Refer to the exhibits.  
Exhibit 1



AAA Profile: Exam\_Employees

AAA Profile: Exam\_Employees

Initial role: logon

MAC Authentication Default Role: guest

802.1X Authentication Default Role: guest

Download Role from CPPM:

Set username from dhcp option 12:

L2 Authentication Fail Through:

Multiple Server Accounting:

User Idle timeout: seconds

Max IPv4 for Wireless user: 2

RADIUS Interim Accounting:

Exhibit 2

Clients(1) <span>Default Columns ▾ ▲</span>								
Client ▾	Health(%) ▾	IP Address ▾	Bond ▾	Radio PHY ▾	Client PHY ▾	Device ▾	Role ▾	Forward Mode ▾
employee	48	10.1.51.150	2.4 GHz	HT 2D MHz	HT 2D MHz	Unknown	guest	Tunnel

An Aruba solution supports a WLAN that uses WPA2-Enterprise security. Exhibit 1 shows the AAA policy for the WLAN. Users are supposed to be assigned to different roles after authentication. Network administrators test a connection with the employee user account. Exhibit 2 shows the status for the client after this test. What is a possible reason for the issue shown in Exhibit 2?

- A. The shared key configured for the ClearPass server is incorrect.
- B. The RADIUS server is not correctly set up to send a user role for the employee account.
- C. MAC authentication is enabled on the WLAN, and the test device does not have an authorized address.
- D. The administrators entered the wrong password for the employee account.

Answer: B

NEW QUESTION 69  
Refer to the exhibit.

Exam_Employee	General	VLANs	Security	Access
Name (ssid): Exam_Employee				
Primary usage: <input checked="" type="radio"/> Employee <input type="radio"/> Guest				
Select AP Groups <input type="button" value="v"/>				
Broadcast on: <input checked="" type="checkbox"/> default <input type="checkbox"/> Public Areas <input type="button" value="▲"/> <input type="button" value="▼"/>				
Forwarding mode: Tunnel <input type="button" value="v"/>				
Broadcast SSID: No <input type="button" value="v"/>				

What describes the behavior for this WLAN?

- A. APs in the default group broadcast the SSI
- B. Clients can connect to the WLAN on APs in the default group only.
- C. No APs broadcast the SSI
- D. Clients cannot connect to the WLAN until administrators activate it.
- E. No APs broadcast the SSI
- F. Clients can connect to the WLAN on APs in the default group only.
- G. APs in the default group broadcast the SSI
- H. Clients can connect to the WLAN on APs in any group.

**Answer: C**

#### NEW QUESTION 73

A customer has a large campus that requires 400 Aruba 335 APs to support a total of 10,000 wireless users and 12Gbps of traffic. Although the customer wants two controllers for redundancy, each controller must be able to support all of the APs and users on its own.

Which Aruba Mobility Controller models meet the customer requirements and DO NOT unnecessarily exceed them?

- A. Aruba 7024 controllers
- B. Aruba 7210 controllers
- C. Aruba 7240 controllers
- D. Aruba 7030 controllers

**Answer: B**

#### NEW QUESTION 74

For which use case should network administrators set up Aruba access points (APs) as multi-zone APs?

- A. The company has multiple small branch offices where APs at each branch office must forward internet traffic locally and corporate traffic over a secure tunnel to a centralized Mobility Controller (MC).
- B. The company has some devices that support both 5GHz and 2.4GHz, and the APs must operate in both frequency bands.
- C. The company requires high availability for its wireless services, and APs must be able to be controlled by more than one Mobility Controller (MC) in case a controller fails.
- D. The company has a Mobility Manager (MM)-based solution that requires APs to terminate to multiple controllers that reside in different administrative domains.

**Answer: D**

#### NEW QUESTION 76

A network administrator reduces an AP radio transmit power from 18 dBm to 15 dBm. This is a loss of 3 dBms.

What is the current power as a percentage of the original power?

- A. 10%
- B. 33%
- C. 50%
- D. 83%

**Answer: C**

#### NEW QUESTION 78

Which deployment option for Aruba Controllers is new to ArubaOS 8?

- A. deployment as virtual appliances
- B. deployment in standalone mode

- C. deployment in master-local mode
- D. deployment as branch office controller

Answer: A

NEW QUESTION 80

A network administrator wants to use unique digital certificates installed on user devices to authenticate wireless users. Which EAP method should the RADIUS server and clients support?

- A. PEAP and MS-CHAPv2
- B. EAP-TLS
- C. EAP-TTLS and MS-CHAPv2
- D. LEAP

Answer: B

NEW QUESTION 84

Which task can an Aruba Spectrum Monitor (SM) perform?

- A. Analyze wireless traffic patterns at the application level.
- B. Optimize RF through the AP channel and transmit power plans.
- C. Analyze RF signals to determine the cause of non-802.11 interference.
- D. Help to detect rogue APs in the environment.

Answer: C

NEW QUESTION 89

A company plans to deploy a Mobility Master (MM). The MM will manage 50 Mobility Controller (MC) appliances that will control a total of 680 APs, and 10 Virtual Mobility Controllers (VMCs) that will control a total of 160 APs. How many MM licenses does the company require?

- A. 60
- B. 210
- C. 900
- D. 960

Answer: C

Explanation:

Starting with ArubaOS 8.0.1, the MM license is required to terminate devices (controllers or APs) on Mobility Master. If the Mobility Master does not have sufficient MM licenses and an AP fails to obtain a license, that AP can get an IP address and connect to its controller, but will not broadcast an SSID.

NEW QUESTION 93

Refer to the exhibits. Exhibit 1

Exam\_GuestGeneralVLANsSecurityAccess

VLAN:guest

Hide VLAN details

Named VLANs							
Name	ID(S)						
employee	51						
guest	99						
--	1,55						

VLAN IDs

ID	IPv4 ADDRE...	IPv6 ADDRE...	ENABLE NAT	PORT MEM...	ADMIN STATE	OPERATION...	DHCP SETTI...
99	--	--	Enabled	--	Enabled	N/A	None

Exhibit 2

Exam\_Guest General VLANs Security Access

Clearpass or other external captive portal

Internal captive portal with authentication

Exhibit 3

Exam\_Guest General VLANs Security Access

Default role: exam\_guest-guest-logon

A network administrator creates a guest WLAN on an Aruba Mobility Manager (MM). The exhibits show some of the settings for the WLAN. The administrator does not change the policies for those roles.

How does the firewall control guest clients when they first connect to the WLAN?

- A. It permits them to send any DHCP traffic and DNS and web traffic to the Internet.
- B. It redirects web traffic destined to the private network to a login portal.
- C. It permits them to send any DHCP and DNS and it redirects all web traffic to a login portal.
- D. It permits them to send any DHCP and RADIUS traffic.
- E. It redirects all web traffic destined to the Internet to a login portal and drops web traffic destined to the private network.
- F. It does not permit them to send any traffic until they are authenticated.

**Answer: D**

#### NEW QUESTION 94

Which authentication server option would the network administrator choose to authenticate a wireless user directly against an Active Directory (AD) domain controller without NPS or IAS?

- A. LDAP server
- B. RFC 3576 server
- C. TACACS server
- D. RADIUS server

**Answer: D**

#### NEW QUESTION 95

A company has an Aruba solution. The company wants to support a guest WLAN with the internal captive portal, but the company also wants to develop their own custom portal pages.

What correctly describes the level of customization that the internal captive portal supports?

- A. The internal captive portal must use the default pages without modification, but administrators can upload pages developed externally.
- B. Administrators can modify the default internal captive portal pages, but cannot upload pages developed externally.
- C. Administrators can modify the default internal captive portal pages or upload pages developed externally.
- D. The internal captive portal must use the default pages without modification, and administrators cannot upload pages developed externally.

**Answer: C**

#### NEW QUESTION 98

What is a requirement for the Dashboard > Traffic Analysis window on the Aruba Mobility Master (MM) to show data?

- A. Airmatch and ClientMatch must be enabled.
- B. The solution must have active PEFNG licenses.
- C. Firewall policies must include application filtering rules.
- D. WLANs must use the decrypt-tunnel forwarding option.

**Answer: B**

#### NEW QUESTION 100

Refer to the exhibits. Exhibit 1



Exam_Employee	General	VLANs	Security	Access
Name (ssid):	Exam_Employee			
Primary usage:	<input checked="" type="radio"/> Employee <input type="radio"/> Guest Select AP Groups ▼			
Broadcast on:	<input checked="" type="checkbox"/> default ▲ <input type="checkbox"/> PublicAreas ▼			
Forwarding mode:	Tunnel ▼			
Broadcast SSID:	Yes ▼			

Exhibit 2

Exam_Employee	General	VLANs	Security	Access
<div> <div> More Secure  Enterprise  Personal  Open  Less Secure </div> <div> Key management: WPA-2 Enterprise ▼  Auth servers: myradiuser...  +  Reauth interval: 86400 sec. ▼  Machine authentication: Disabled ▼  Blacklisting: Disabled ▼ </div> </div>				

Network administrators use the Aruba Mobility Master (MM) wizard to create a WLAN and do not manually alter any of the profiles for that WLAN. The exhibits show some of the settings for the WLAN. Some wireless users cannot successfully connect to the WLAN. Network administrators attempt to connect on their own machines with a test account, and the connection is successful. They attempt to connect with the same account on user clients, and the connection fails. Which issue could prevent authentication from completing correctly?

- A. The user clients have unauthorized MAC addresses, so the RADIUS server rejects the authentication even though the username and password are correct.
- B. The user clients do not trust the RADIUS server certificate and are configured not to prompt users to trust new certificates.
- C. Some access points (APs) are not configured as clients on the RADIUS server, so user clients connected to them cannot authenticate.
- D. The RADIUS server has reached the maximum number of RADIUS clients that it can support, so it rejects new wireless clients.

**Answer: B**

#### NEW QUESTION 104

An Aruba solution has a WLAN that uses WPA2-Enterprise security. How are encryption keys dynamically managed for the wireless users?

- A. The MM generates and distributes keys to clients and access points (APs).
- B. Administrators configure identical key strings on the Mobility Controllers (MCs) and wireless client 802.1X settings.
- C. Keys are generated and distributed securely during each wireless user authentication process.
- D. Keys are derived from the preshared key configured on the WLAN and on each wireless client.

**Answer: C**

#### NEW QUESTION 106

A network administrator needs to configure firewall rules for three roles:

- > Finance
- > Sales
- > Employee

Several rules apply to both the Employee and Sales roles, but not to the Finance role. What is the simplest way to configure these rules?

- A. Define the Employee and Sales roles as internal roles, and then configure the rules as global rules for internal users.
- B. Apply these rules as a subnet-based policy, and then ensure that only Employee and Sales users are assigned IP addresses in that subnet.
- C. Select either the Employee or Sales role, and then configure these rules within the global policy.
- D. Create a policy with these rules, and then apply that policy to the Employee and Sales roles.



**Answer:** D

**NEW QUESTION 109**

.....

## Thank You for Trying Our Product

### We offer two products:

1st - We have Practice Tests Software with Actual Exam Questions

2nd - Questions and Answers in PDF Format

### HPE6-A70 Practice Exam Features:

- \* HPE6-A70 Questions and Answers Updated Frequently
- \* HPE6-A70 Practice Questions Verified by Expert Senior Certified Staff
- \* HPE6-A70 Most Realistic Questions that Guarantee you a Pass on Your FirstTry
- \* HPE6-A70 Practice Test Questions in Multiple Choice Formats and Updatesfor 1 Year

**100% Actual & Verified — Instant Download, Please Click**  
**[Order The HPE6-A70 Practice Test Here](#)**