



Cisco

Exam Questions 500-220

Engineering Cisco Meraki Solutions

NEW QUESTION 1

What are two roles of the network and device tags in a Dashboard? (Choose two.)

- A. Tags enable administrators to configure a combination of network and device specific tags to create summary reports filtered for specific devices across multiple networks.
- B. Network tags can be used to assign networks to separate Auto VPN domains in an Organization with many networks.
- C. Network tags can be used to simplify the assignment of network-level permissions in an Organization with many networks.
- D. Device tags can be used to simplify the assignment of device-level permissions in an Organization with many administrators.
- E. Device tags can be assigned to MR APs to influence the gateway selection for repeaters in a mesh wireless network.

Answer: AE

NEW QUESTION 2

In an organization that uses the Co-Termination licensing model, which two operations enable licenses to be applied? (Choose two.)

- A. Renew the Dashboard license.
- B. License a network.
- C. License more devices.
- D. Call Meraki support.
- E. Wait for the devices to auto-renew.

Answer: AC

NEW QUESTION 3

What is the best practice Systems Manager enrollment method when deploying corporate-owned iOS devices?

- A. manual
- B. Apple Configurator
- C. Sentry enrollment
- D. DEP

Answer: B

NEW QUESTION 4

Refer to the exhibit.

License information for Home

License status	OK	
License expiration ⓘ	May 20, 2029 (3593 days from now)	
MX advanced Security	Enabled	
System Manager	Enabled (paid)	
	License limit	Current device count
MS220-8P	1	1
MV	2	0
MX64	1	1
Systems Manager Agent	100	0
Wireless AP	7	1
MV-SEN	10 free	0

[Add another license](#)

This Dashboard organization uses Co-Termination licensing model.

What happens when an additional seven APs are claimed on this network without adding licenses?

- A. All APs immediately stop functioning.
- B. All network devices stop functioning in 30 days.
- C. One AP Immediately stops functioning.
- D. All APs stop functioning in 30 days.

Answer: B

NEW QUESTION 5

What occurs when a configuration change is made to an MX network that is bound to a configuration template?

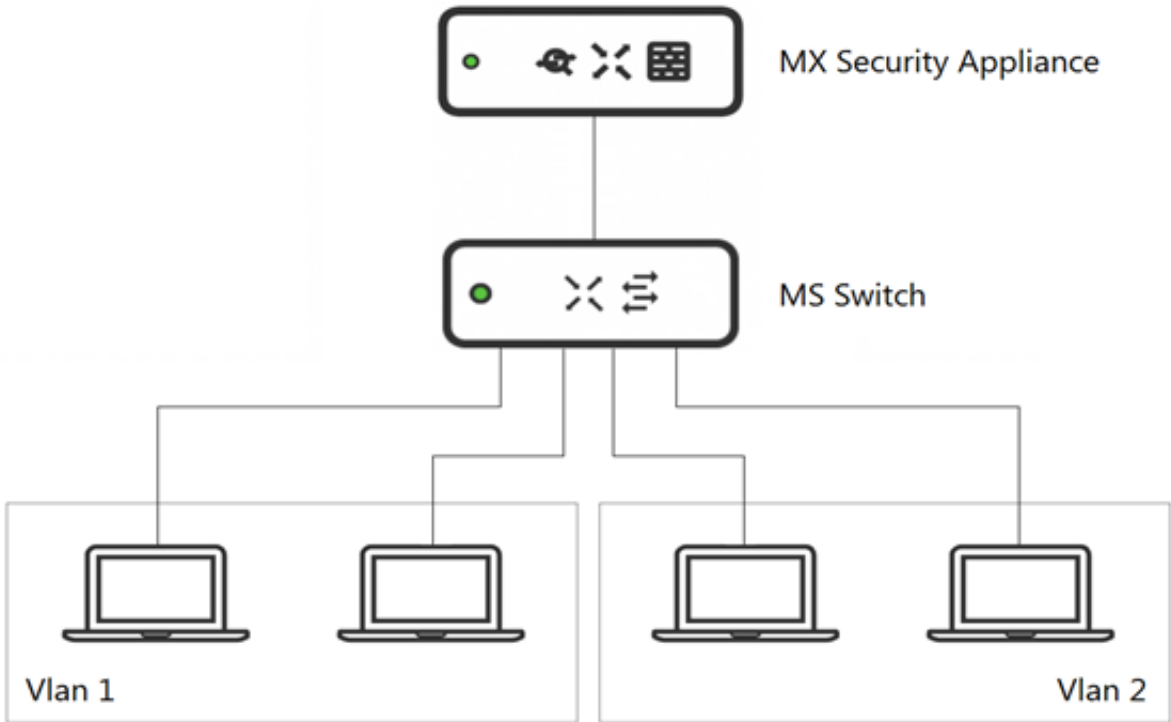
- A. The configuration change in the bound network is combined with the template configuration inside the template.
- B. The more restrictive configuration is preferred.
- C. The configuration change in the bound network overrides the template configuration.
- D. The template configuration overrides the configuration change in the bound network.

- A. quarantine
- B. prevention
- C. detection
- D. blocking

Answer: B

NEW QUESTION 10

Refer to the exhibit.



What is an advantage of implementing inter-VLAN routing on an MX Security Appliance rather than performing inter-VLAN routing on an MS Series Switch?

- A. The MX appliance performs IDS/IPS for inter-VLAN traffic.
- B. The MX appliance performs AMP for inter-VLAN traffic.
- C. The MX appliance performs data encryption for inter-VLAN traffic.
- D. The MX appliance performs content filtering for inter-VLAN traffic.

Answer: C

NEW QUESTION 13

Refer to the exhibit.

WAN Health For the last 2 hours

Uplink Status	Network Name ▲	Uplink Type	ISP	Availability	Total Usage	Average Throughput	Loss	Average Latency	Jitter
Ready	Meraki Sydney – appliance	WAN 1	unknown	<div></div>	↓ 4.03 GB, ↑ 1.39 GB	↓ 4.44 Mb/s, ↑ 1.55 Mb/s	0.00%	4.33 ms	0.05 ms
Active	Meraki Sydney – appliance	WAN 2	anticklockwise.net.au	<div></div>	↓ 23.18 GB, ↑ 14.85 GB	↓ 25.00 Mb/s, ↑ 15.39 Mb/s	0.00%	0.79 ms	0.06 ms

What are the Loss and Average Latency statistics based on?

- A. responses that the MX appliance receives on the connectivity-testing hostnames on the Insight > Web App Health page
- B. responses that the MX appliance receives on the connectivity-testing IP addresses on the Security & SD- WAN > Firewall page
- C. responses that the MX appliance receives on the connectivity-testing IP address that is configured on the Security & SD-WAN > SD-WAN & Traffic Shaping page
- D. responses that the MX appliance receives on the connectivity-testing IP addresses on the Help > Firewall info page

Answer: B

NEW QUESTION 18

Which VLAN is used to source pings across the site-to-site VPN when using the MX Live tools?

- A. highest VLAN ID that is configured and set to NO to use VPN
- B. lowest VLAN ID that is configured and set to YES to use VPN
- C. highest VLAN ID that is configured and set to YES to use VPN
- D. lowest VLAN ID configured and set to NO to use VPN

Answer: C

NEW QUESTION 21

A new application needs to be pushed to all iOS devices. Some devices report “NotNow” in the event log and do not install the application. What does the “NotNow” event indicate?

- A. The application requires the most recent iOS version.
- B. The device is locked with a passcode.

- C. The device cannot connect to Apple servers.
- D. The device cannot connect to Cisco Meraki servers.

Answer: B

NEW QUESTION 24

When wireless SSIDs are configured in Dashboard, which setting on the Access Control page affects the ability of a 2.4 GHz only client device from associating to the WLAN for the first time?

- A. Content filtering
- B. Bridge mode
- C. 802.11r
- D. Dual band operating with Band Steering

Answer: D

NEW QUESTION 25

Air Marshal has contained a malicious SSID.
 What are two effects on connectivity? (Choose two.)

- A. Currently associated clients stay connected.
- B. New clients can connect.
- C. Currently associated clients are affected by restrictive traffic shaping rules.
- D. New clients cannot connect.
- E. Currently associated clients are disconnected.

Answer: DE

NEW QUESTION 26

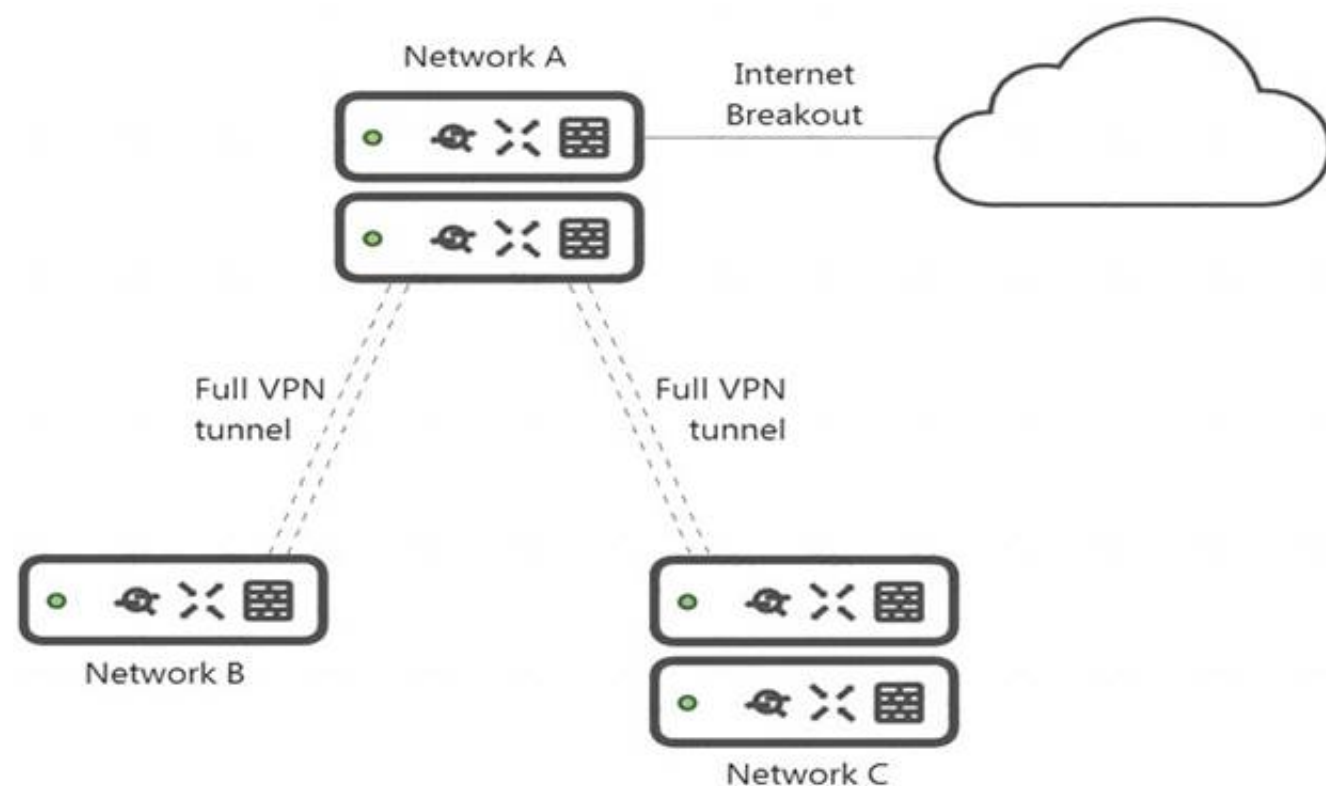
Which Cisco Meraki product must be deployed in addition to Systems Manager so that Systems Manager Sentry enrollment can be used?

- A. MS Switch
- B. Meraki Insight
- C. MR Access Point
- D. MV Smart Camera

Answer: C

NEW QUESTION 27

Refer to the exhibit.



What is the minimal Cisco Meraki Insight licensing requirement?

- A. A single Meraki Insight license must be configured on network A to gain Web App Health visibility on network B.
- B. A single Meraki Insight license must be configured on network B to gain Web App Health visibility on network B.
- C. A single Meraki Insight license must be configured on network A, and a single license must be configured on network B, to gain Web App Health visibility on network B.
- D. Two Meraki Insight licenses must be configured on network A to gain Web App Health visibility on network B.
- E. Two Meraki Insight licenses must be configured on network A and a single license must be configured on network B, to gain Web App Health visibility on network B.

Answer: E

NEW QUESTION 31

Which two primary metrics does Meraki Insight use to calculate the Application Performance Score? (Choose two.)

- A. Maximum Jitter
- B. Total Bandwidth Usage
- C. Maximum Latency
- D. Per-flow Goodput
- E. Application Response Time

Answer: DE

NEW QUESTION 35

A customer requires a hub-and-spoke Auto VPN deployment with two NAT-mode hubs with dual uplink connections and 50 remote sites with a single uplink connection.

How many tunnels does each hub need to support?

- A. 52
- B. 54
- C. 100
- D. 104

Answer: C

NEW QUESTION 38

Which requirement is needed to implement Fast Lane on Cisco Meraki APs?

- A. wireless profile installed on an Apple iOS device
- B. wireless profile installed on a Cisco iOS access point
- C. adaptive 802.11r disabled
- D. traffic shaping rule tagging traffic with a DSCP value of 46 to Apple.com

Answer: A

NEW QUESTION 43

.....

Thank You for Trying Our Product

We offer two products:

1st - We have Practice Tests Software with Actual Exam Questions

2nd - Questons and Answers in PDF Format

500-220 Practice Exam Features:

- * 500-220 Questions and Answers Updated Frequently
- * 500-220 Practice Questions Verified by Expert Senior Certified Staff
- * 500-220 Most Realistic Questions that Guarantee you a Pass on Your FirstTry
- * 500-220 Practice Test Questions in Multiple Choice Formats and Updatesfor 1 Year

100% Actual & Verified — Instant Download, Please Click
[Order The 500-220 Practice Test Here](#)