



**Cisco**

## **Exam Questions 300-425**

Designing Cisco Enterprise Wireless Networks (ENWLSD)

### NEW QUESTION 1

An engineer must ensure that the new wireless LAN deployment can support seamless roaming between access points using a standard based on an amendment to the 802.11 protocol. Which protocol must the engineer select?

- A. 802.11i
- B. 802.11ac
- C. 802.11r
- D. 802.11e

**Answer: C**

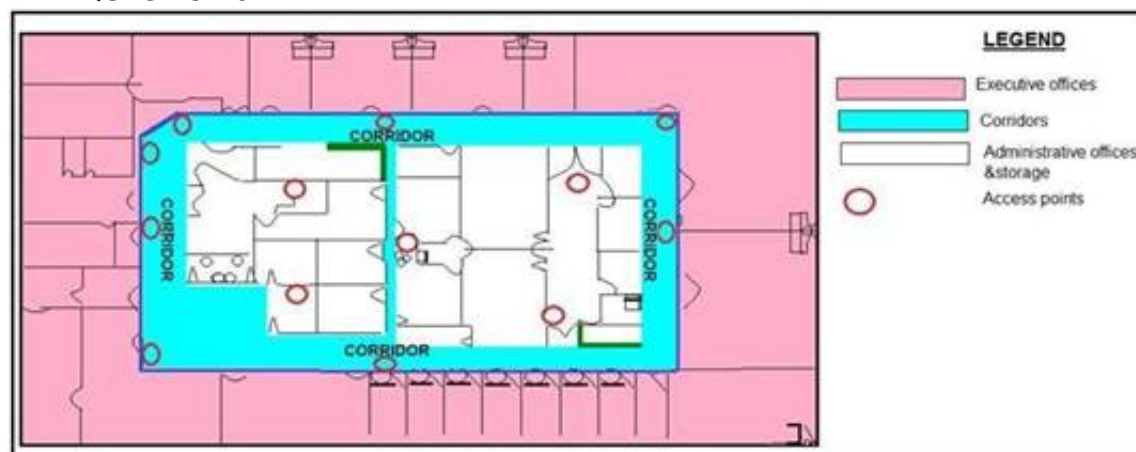
### NEW QUESTION 2

A high-density wireless network is designed. Which Cisco WLC configuration setting must be incorporated in the design to encourage clients to use the 5 GHz spectrum?

- A. Band Select
- B. RRM
- C. Cisco Centralized Key Management
- D. load balancing

**Answer: A**

### NEW QUESTION 3



Refer to the exhibit. What is the main reason why the Wi-Fi design engineer took a different approach than installing the APs in the offices, even though that installation provides better coverage?

- A. aesthetics
- B. transmit power considerations
- C. antenna gain
- D. power supply considerations

**Answer: B**

### NEW QUESTION 4

Where must the APs be mounted when used in a high-density wireless network to provide 6 dB to 20 dB of attenuation to a cell?

- A. in the aisle
- B. under the seat
- C. above the stage
- D. under the stage

**Answer: B**

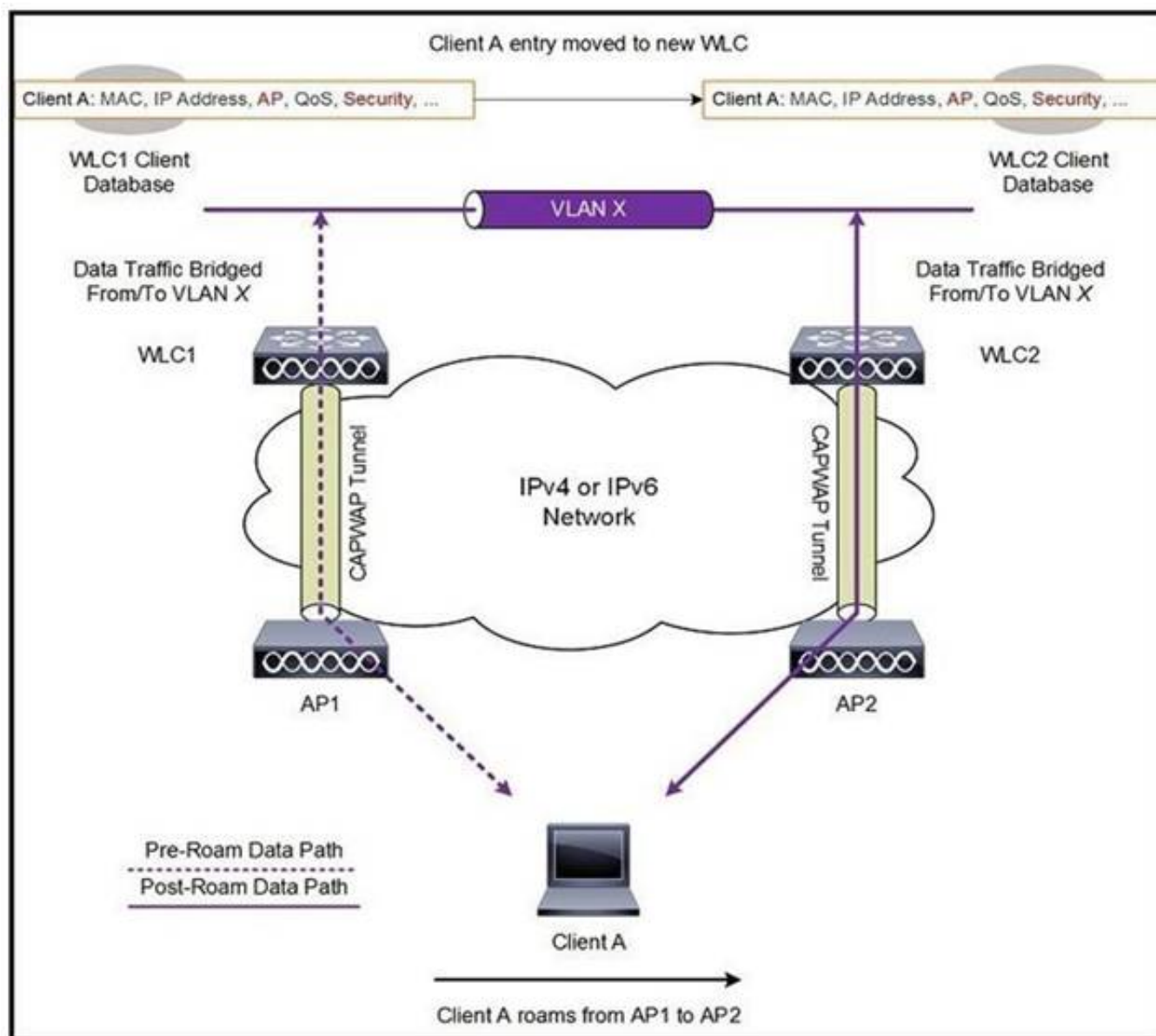
### NEW QUESTION 5

A company wants to replace its existing PBX system with a new VoIP System that will include wireless IP phones. The CIO has concerns about whether the company's existing wireless network can support the new system. Which tool in Cisco Prime can help ensure that the current network will support the new phone system?

- A. Location Readiness
- B. Site Calibration
- C. Map Editor
- D. Voice Readiness

**Answer: D**

### NEW QUESTION 6



Refer to the exhibit. A client roams between two APs that are registered to two different controllers, where each controller has an interface in the client subnet. Both controllers are running AireOS. Which scenario explains the client roaming behavior?

- A. Controllers exchange mobility control messages (over UDP port 16666) and the client database entry is moved from the original controller to the new controller.
- B. Controllers do not exchange mobility control messages (over UDP port 16666) and the client database entry is not moved from the original controller to the new controller.
- C. Controllers exchange mobility control messages (over UDP port 16666) and a new client session is started with the new controller.
- D. Controllers exchange mobility control messages (over UDP port 16666) and the client database entry is tunneled from the original controller to the new controller.

**Answer: A**

#### NEW QUESTION 7

An engineer has performed a predictive site survey for high-speed data and voice in an indoor office. What is the recommended data rate with -67 dBm signal level for optimal VoWLAN design?

- A. 6 Mbps on 802.11 bgn
- B. 24 Mbps on 802.11 bgn
- C. 12 Mbps on 802.11 an
- D. 24 Mbps on 802.11 an

**Answer: B**

#### NEW QUESTION 8

Which statement about creating a mobility group is true, excluding mobility anchors?

- A. Each WLC must use the same mobility name and be defined as a peer in each other's static mobility members list.
- B. If WLCs with HA SSO are deployed, each WLC in the WLC HA pair considered separately as a mobility peer.
- C. The WLCs do not have to be of the same model or type to be a member of a mobility group, however each member should be running different software versions.
- D. A mobility groups does not require all WLCs in the group to use the same virtual IP address.

**Answer: B**

#### NEW QUESTION 9

A customer is concerned about mesh backhaul link security. Which level of encryption does the backhaul link use?

- A. hash
- B. AES
- C. WEP
- D. 3DES

**Answer: B**

#### NEW QUESTION 10

Which statement about the 9800 Series Wireless Controller mobility tunnel on a Cisco Catalyst 9800 controller is true?

- A. It is an IPsec tunnel with control path only.
- B. It is a CAPWAP tunnel with data path only.
- C. It is a CAPWAP tunnel with control path and data path.
- D. It is an IPsec tunnel with control path and data path.

Answer: B

#### NEW QUESTION 10

Which statement about AP failover priority for access points when configured with priority 1 or 4 is true?

- A. When configured with priority 1, the access point is assigned with the highest priority level and it is marked as critica
- B. This access point fails over before other access points with the lower priority when there is primary controller failure.
- C. When configured with priority 4, the access point is assigned with the highest priority level and it is marked as critica
- D. This access point fails over before other access points with the lower priority when there is primary controller failure.
- E. When configured with priority 4, the access point is assigned with the lowest priority level and it is marked as lo
- F. This access point fails over after other access points with the higher priority when there is primary controller failure.
- G. When configured with priority 1, the access point is assigned with the medium priority level and it is marked as mediu
- H. This access point fails over after other access points with the higher priority when there is primary controller failure.

Answer: B

#### NEW QUESTION 12

A network engineer is working on a design for a wireless network that must support data, voice, and location services. To support these services, which access point placement must the engineer use?

- A. corner only
- B. perimeter and corner
- C. perimeter only
- D. indoor and outdoor

Answer: C

#### NEW QUESTION 13



Refer to the exhibit. Which two statements about Cisco Prime Infrastructure are true? (Choose two.)

- A. It presents the recommended number of APs for the selected coverage area based on the selections made.
- B. Planning mode requires a special license in Cisco Prime Infrastructure.
- C. It shows the map editor feature in Cisco Prime Infrastructure.
- D. Controllers must be synchronized with Cisco Prime Infrastructure for planning mode to work.
- E. It shows the planning mode feature in Cisco Prime Infrastructure.

Answer: DE

#### NEW QUESTION 18

A network engineer is configuring high availability on an access point. What is the maximum number of controllers that can be configured?

- A. 1
- B. 2
- C. 3
- D. 4

**Answer:** B

#### NEW QUESTION 19

An engineer must configure the virtual IP address on multiple controllers in a mobility group. Which rule must the engineer follow to ensure proper roaming?

- A. Ensure that the DNS entry is tied to the virtual IP address of the WLC.
- B. Use a unique IP address for each WLC.
- C. Ensure that the DNS Host Name field is defined.
- D. Use the same IP address for each WLC.

**Answer:** A

#### NEW QUESTION 22

A wireless engineer is utilizing the voice readiness tool in Cisco Prime for a customer that wants to deploy Cisco IP phones. Which dBm range is the network inspected against?

- A. -78 to -65 dBm B.-72 to -67 dBm
- B. 85 to -65 dBm
- C. -85 to -67 dBm

**Answer:** D

#### NEW QUESTION 24

A customer has determined that aesthetics is a primary concern for their upcoming guest deployment. Which design consideration can be leveraged to address this concern?

- A. Paint the access point to cover the LED from being noticeable.
- B. Use enclosures to hide the wireless infrastructure in the surrounding environment.
- C. Use AIR-AP-BRACKET-1 to allow for greater mounting locations
- D. Deploy environmentally friendly cabling components to blend into the environment.

**Answer:** D

#### NEW QUESTION 28

A wireless deployment in a high-density environment is being used by vendors to process credit card payment transactions via handheld mobile scanners. The scanners are having problems roaming between access points in the environment. Which feature on the wireless controller should have been incorporated in the design?

- A. RX SOP
- B. 802.11w
- C. AP Heartbeat Timeout
- D. Application Visibility Control

**Answer:** A

#### NEW QUESTION 30

.....

## Thank You for Trying Our Product

### We offer two products:

1st - We have Practice Tests Software with Actual Exam Questions

2nd - Questions and Answers in PDF Format

### 300-425 Practice Exam Features:

- \* 300-425 Questions and Answers Updated Frequently
- \* 300-425 Practice Questions Verified by Expert Senior Certified Staff
- \* 300-425 Most Realistic Questions that Guarantee you a Pass on Your First Try
- \* 300-425 Practice Test Questions in Multiple Choice Formats and Updates for 1 Year

**100% Actual & Verified — Instant Download, Please Click**  
**[Order The 300-425 Practice Test Here](#)**