

## Exam Questions 350-901

Developing Applications using Cisco Core Platforms & APIs

<https://www.2passeasy.com/dumps/350-901/>



#### NEW QUESTION 1

A developer has created an application based on customer requirements. The customer needs to run the application with the minimum downtime. Which design approach regarding high-availability applications, Recovery Time Objective, and Recovery Point Objective must be taken?

- A. Active/passive results in lower RTO and RP
- B. For RPO, data synchronization between the two data centers must be timely to allow seamless request flow.
- C. Active/passive results in lower RTO and RP
- D. For RPO, data synchronization between the two data centers does not need to be timely to allow seamless request flow.
- E. Active/active results in lower RTO and RP
- F. For RPO, data synchronization between the two data centers does not need to be timely to allow seamless request flow.
- G. Active/active results in lower RTO and RP
- H. For RPO, data synchronization between the two data centers must be timely to allow seamless request flow.

**Answer:** A

#### NEW QUESTION 2

How should a web application be designed to work on a platform where up to 1000 requests per second can be served?

- A. Use algorithms like random early detection to deny excessive requests.
- B. Set a per-user limit (for example, 5 requests/minute/user) and deny the requests from the users who have reached the limit.
- C. Only 1000 user connections are allowed; further connections are denied so that all connected users can be served.
- D. All requests are saved and processed one by one so that all users can be served eventually.

**Answer:** D

#### NEW QUESTION 3

A network operations team is using the cloud to automate some of their managed customer and branch locations. They require that all of their tooling be ephemeral by design and that the entire automation environment can be recreated without manual commands. Automation code and configuration state will be stored in git for change control and versioning. The engineering high-level plan is to use VMs in a cloud-provider environment then configure open source tooling onto these VMs to poll, test, and configure the remote devices, as well as deploy the tooling itself. Which configuration management and/or automation tooling is needed for this solution?

- A. Ansible
- B. Ansible and Terraform
- C. NSO
- D. Terraform
- E. Ansible and NSO

**Answer:** B

#### NEW QUESTION 4

DRAG DROP

Drag and drop the characteristics from the left onto the correct data processing techniques on the right, in the context of GDPR. Select and Place:

##### Answer Area

- processing of personal data in such a manner that the personal data can no longer be attributed to a specific data subject without the use of additional information
- data stripped of sufficient elements such that the data subject can no longer be identified
- can be re-identified
- cannot be re-identified

Data anonymization

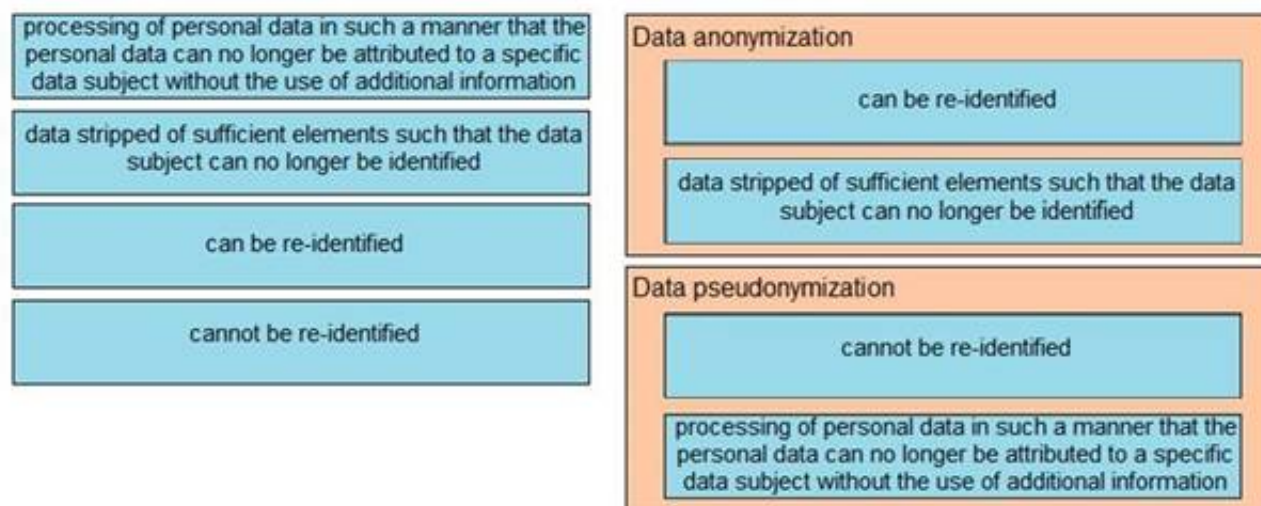
Data pseudonymization

- A. Mastered
- B. Not Mastered

**Answer:** A

**Explanation:**

## Answer Area



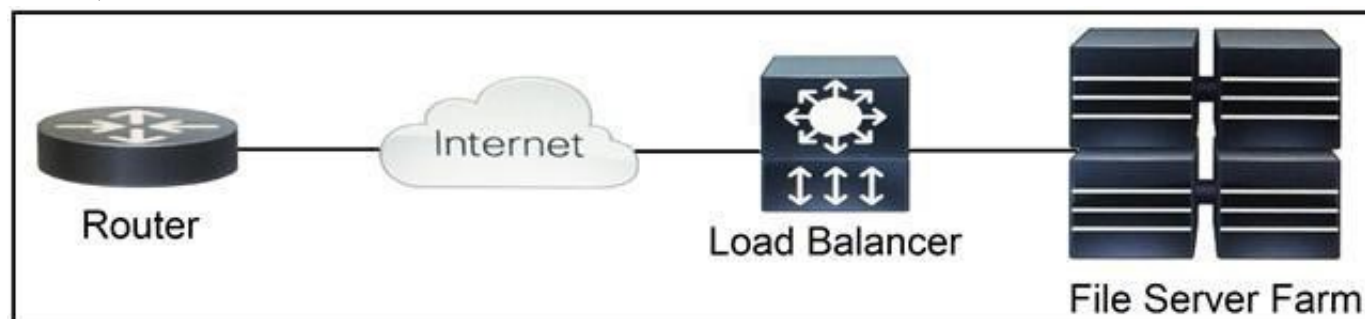
## NEW QUESTION 5

Which two data encoding techniques are supported by gRPC? (Choose two.)

- A. XML
- B. JSON
- C. ASCII
- D. ProtoBuf
- E. YAML

**Answer:** BE

## NEW QUESTION 6



Refer to the exhibit. Which two functions are performed by the load balancer when it handles traffic originating from the Internet destined to an application hosted on the file server farm? (Choose two.)

- A. Terminate the TLS over the UDP connection from the router and originate an HTTPS connection to the selected server.
- B. Terminate the TLS over the UDP connection from the router and originate an HTTP connection to the selected server.
- C. Terminate the TLS over the TCP connection from the router and originate an HTTP connection to the selected server.
- D. Terminate the TLS over the TCP connection from the router and originate an HTTPS connection to the selected server.
- E. Terminate the TLS over the SCTP connection from the router and originate an HTTPS connection to the selected server.

**Answer:** DE

## NEW QUESTION 7

Which two methods are API security best practices? (Choose two.)

- A. Use tokens after the identity of a client has been established.
- B. Use the same operating system throughout the infrastructure.
- C. Use encryption and signatures to secure data.
- D. Use basic auth credentials over all internal API interactions.
- E. Use cloud hosting services to manage security configuration.

**Answer:** AC

## NEW QUESTION 8

A developer has completed the implementation of a REST API, but when it is executed, it returns a 401 error message. What must be done on the API to resolve the issue?

- A. Access permission to the resource must be granted, before the request.
- B. Configure new valid credentials.
- C. The requested API endpoint does not exist, and the request URL must be changed.
- D. Additional permission must be granted before the request can submitted.

**Answer:** D

## NEW QUESTION 9

### Paginating the Results

By adding the `page-size` operator to the query URI you can divide the query results into groups (pages) of objects using the following syntax. The operand specifies the number of objects in each group.

`page-size = number-of-objects-per-page`

By adding the `page` operator in the query URI, you can specify a single group to be returned using the following syntax. The pages start from number 0.

`page = page-number`

This example shows you how to specify 15 fault instances per page in descending order, returning only the first page:

Refer to the exhibit. Many faults have occurred in the ACI environment and a sample of them needs to be examined. Which API call retrieves faults 30 through 45?

- A. GET <https://apic-ip-address/api/class/faultInfo.json?order-by=faultinst.severity|desc&page=1&page-size=15>
- B. GET <https://apic-ip-address/api/class/faultInfo.json?order-by=faultinst.severity|desc&page=2&page-size=15>
- C. GET <https://apic-ip-address/api/class/faultInfo.json?order-by=faultinst.severity|desc&page=30>
- D. GET <https://apic-ip-address/api/class/faultInfo.json?order-by=faultinst.severity|desc&page=2&page-size=30>

**Answer: D**

### NEW QUESTION 10

`$filter { string }`

query

Filter criteria for documents to return. A URI with a `$filter` System Query Option identifies a subset of the Entries from the Collection of Entries identified by the Resource Path section of the URI. The subset is determined by selecting only the Entries that satisfy the predicate expression specified by the query option. The expression language that is used in `$filter` operators supports references to properties and literals. The literal values can be strings enclosed in single quotes, numbers and boolean values (true or false) or any of the additional literal representations shown in the Abstract Type System section. Query examples: `$filter=Name eq 'Bob'` `$filter=Tags/any(t: t/Key eq 'Site')` `$filter=Tags/any(t: t/Key eq 'Site' and t/Value eq 'London')`

GET [/api/v1/compute/RackUnits?\\$filter=Tags/any \(t:t/Key eq 'Site'\)](https://api/v1/compute/RackUnits?$filter=Tags/any (t:t/Key eq 'Site'))

Refer to the exhibit. An Intersight API is being used to query RackUnit resources that have a tag keyword set to "Site". What is the expected output of this command?

- A. list of all resources that have a tag with the keyword "Site"
- B. error message because the Value field was not specified
- C. error message because the tag filter should be lowercase
- D. list of all sites that contain RackUnit tagged compute resources

**Answer: A**

### NEW QUESTION 10

Refer to the exhibit. An application uses an API to periodically sync a large data set. Based on the HTTP message sequence provided, which statements are true about the caching behavior seen in the scenario? (Choose two.)

- A. The full dataset was transmitted to the client twice.
- B. The dataset changed sometime between message #4 and #5.
- C. A partial dataset was transmitted to the client in message #4.
- D. The dataset did not change during the scenario.
- E. Messages #3 and #5 are equivalent.

**Answer: AD**

### NEW QUESTION 12

Which RFC5988 (Web Linking) relation type is used in the Link header to control pagination in APIs?

- A. `rel="index"`
- B. `rel="page"`
- C. `rel="next"`
- D. `rel="section"`

**Answer: C**

### NEW QUESTION 17

A client is written that uses a REST API to interact with a server. Using HTTPS as the transport, an HTTP request is sent and received an HTTP response. The response contains the HTTP response status code: 503 Service Unavailable.

Which action is the appropriate response?

- A. Add an Authorization header that supplies appropriate credentials and sends the updated request.
- B. Resend the request using HTTP as the transport instead of HTTPS.
- C. Add an Accept header that indicates the content types that the client understands and send the updated request.



D. Look for a Retry-After header in the response and resend the request after the amount of time indicated.

**Answer:** A

#### NEW QUESTION 22

Which snippet presents the correct API call to configure, secure, and enable an SSID using the Meraki API?

- A. 

```
curl -X PUT \
--url 'https://api.meraki.com/api/v0/networks/:networkId/ssids/2' \
-H 'X-Cisco-Meraki-API-Key: 15da0c6ffff295f16267f88f98694cf29a86ed87' \
-H 'Accept: application/json' \
-H 'Content-type: application/json' \
--data-raw '{
  "name": "My SSID",
  "enabled": false,
  "authMode": "psk",
  "encryptionMode": "wpa",
  "psk": "meraki123",
  "wpaEncryptionMode": "WPA1 and WPA2"
}'
```
- B. 

```
curl -X PUT \
--url 'https://api.meraki.com/api/v0/networks/:networkId/ssids/2' \
-H 'X-Cisco-Meraki-API-Key: 15da0c6ffff295f16267f88f98694cf29a86ed87' \
-H 'Accept: application/json' \
-H 'Content-type: application/json' \
--data-raw '{
  "name": "My SSID",
  "enabled": true,
  "authMode": "psk",
  "encryptionMode": "wpa",
  "psk": "meraki123",
  "wpaEncryptionMode": "WPA1 and WPA2"
}'
```
- C. 

```
curl -X PUT \
--url 'https://api.meraki.com/api/v0/networks/:networkId/ssids/2' \
-H 'X-Cisco-Meraki-API-Key:
15da0c6ffff295f16267f88f98694cf29a86ed87' \
-H 'Accept: application/json' \
-H 'Content-type: application/json' \
--data-raw '{
  "enabled": true,
  "useVlanTagging": true
}'
```
- D. 

```
curl -X PUT \
--url 'https://api.meraki.com/api/v0/networks/:networkId/ssids/2' \
-H 'X-Cisco-Meraki-API-Key: 15da0c6ffff295f16267f88f98694cf29a86ed87' \
-H 'Accept: application/json' \
-H 'Content-type: application/json' \
--data-raw '{
  "name": "My SSID",
  "enabled": true,
}'
```

**Answer:** B

#### NEW QUESTION 23

A container running a Python script is failing when it reaches the integration testing phase of the CI/CD process. The code has been reviewed thoroughly and the build process works on this container and all other containers pass unit and integration testing. What should be verified to resolve the issue?

- A. that the correct port is exposed in the Dockerfile  
B. that the necessary modules and packages are installed on build  
C. that the script is running from the right directory  
D. that the Python version of the container image is correct

**Answer:** B

#### NEW QUESTION 25

Click on the GET Resource button above to view resources that will help with this question.

An engineer is managing a DC with 6000 Cisco UCS servers installed and running. The engineer has been asked to identify all resources where the model is in the UCSB family and the available memory is less than or equal to 5 GB.

Which REST API call accomplishes this task?

- A. GET/api/v1/compute/RackUnits?\$select=Vendor,Model,Serial&\$filter=not(Model eq 'UCSC') and AvailableMemory le 5000
- B. GET/api/v1/compute/RackUnits?\$select=Vendor,Model,Serial&\$filter=Model eq 'UCSB' and AvailableMemory lt 5000
- C. GET/api/v1/compute/RackUnits?\$select=Vendor,Model,Serial&\$filter=contains(Model, UCSB') and AvailableMemory lt 5000
- D. GET/api/v1/compute/RackUnits?\$select=Vendor,Model,Serial&\$filter=contains(Model, UCSB') and AvailableMemory le 5000

**Answer: D**

#### NEW QUESTION 27

```
import http.client

conn = http.client.HTTPSConnection("dnac.cisco.com")

headers = {
    '__runsync': "true",
    '__timeout': "30",
    '__persistbapioutput': "true",
}

conn.request("□", "/dna/intent/api/v1/□?timestamp=10000", headers=headers)

res = conn.getresponse()
data = res.read()

print(data.decode("utf-8"))
```

Refer to the exhibit. Which configuration of method and parameter retrieves the health of a laptop connected to the network from Cisco DNA Center?

- A. PUT; network-health;
- B. GET; client-health;
- C. GET; network-device;
- D. POST; network-device;

**Answer: C**

#### NEW QUESTION 28

On a Cisco Catalyst 9300 Series Switch, the guest shell is being used to create a service within a container. Which change is needed to allow the service to have external access?

- A. Apply ip nat overload on VirtualPortGroup0.
- B. Apply ip nat inside on Interface VirtualPortGroup0.
- C. Apply ip nat outside on Interface VirtualPortGroup0.
- D. Apply ip nat inside on Interface GigabitEthernet1.

**Answer: B**

#### NEW QUESTION 32

There is a requirement to securely store unique usernames and passwords. Given a valid username, it is also required to validate that the password provided is correct. Which action accomplishes this task?

- A. Encrypt the username, hash the password, and store these values.
- B. Hash the username, hash the password, and store these values.
- C. Encrypt the username, encrypt the password, and store these values.
- D. Hash the username, encrypt the password, and store these values.

**Answer: A**

#### NEW QUESTION 37

While developing an application following the 12-factor app methodology, which approach should be used in the application for logging?

- A. Write a log to a file in the application directory.
- B. Write a log to a file in /var/log.
- C. Write the logs buffered to stdout.
- D. Write the logs unbuffered to stdout.

**Answer: D**

#### NEW QUESTION 42

A web application is susceptible to cross-site scripting. Which two methods allow this issue to be mitigated? (Choose two.)

- A. Use only drop downs.

- B. Limit user input to acceptable characters.
- C. Encrypt user input on the client side.
- D. Use AES encryption to secure the script.
- E. Remove all HTML/XML tags from user input.

**Answer:** BD

#### NEW QUESTION 46

What is submitted when an SSL certificate is requested?

- A. PEM
- B. CRT
- C. DER
- D. CSR

**Answer:** D

#### NEW QUESTION 47

Which two countermeasures help reduce the risk of playback attacks? (Choose two.)

- A. Store data in a NoSQL database.
- B. Implement message authentication (HMAC).
- C. Enable end-to-end encryption.
- D. Remove stack traces from errors.
- E. Use short-lived access tokens.

**Answer:** BE

#### NEW QUESTION 51

**FROM alpine:3.7**

**RUN apk add --no-cache bash**

Refer to the exhibit. Which additional line results in the output of Test 1 upon execution of the docker run --rm devnet 1 command in a Dockerfile with this content?

- A. CMD ["/bin/echo", "Test"]
- B. RUN ["/bin/echo", "Test"]
- C. ENTRYPOINT ["/bin/echo", "Test"]
- D. CMD ["/bin/echo Test"]

**Answer:** A

#### NEW QUESTION 52

Which two strategies are used to protect personally identifiable information? (Choose two.)

- A. Encrypt data in transit.
- B. Encrypt hash values of data.
- C. Encrypt data at rest.
- D. Only hash usernames and passwords for efficient lookup.
- E. Only encrypt usernames and passwords for efficient lookup.

**Answer:** AB

#### NEW QUESTION 55

Which database type should be used to store data received from model- driven telemetry?

- A. BigQuery database
- B. Time series database
- C. NoSQL database
- D. PostgreSQL database

**Answer:** B

#### NEW QUESTION 56

```
- name: Configure Interfaces
  with_items: "{{interfaces}}"
  netconf_config:
    <<: *host_info
    xml: |
      <config>
        <interfaces xmlns="urn:ietf:params:xml:ns:yang:ietf-interfaces">
          <interface>
            <name>{{item.interface_type}}{{item.interface_id}}</name>
            <description>{{item.description}}</description>
            <type xmlns:ianaift="urn:ietf:params:xml:ns:yang:iana-if-type">ianaift:ethernetCsmacd</type>
            <enabled>true</enabled>
            <ipv4 xmlns="urn:ietf:params:xml:ns:yang:ietf-ip">
              <address>
                <ip>{{item.ip_address}}</ip>
                <netmask>{{item.subnet_mask}}</netmask>
              </address>
            </ipv4>
          </interface>
        </interfaces>
      </config>
```

Refer to the exhibit. As part of the Ansible playbook workflow, several new interfaces are being configured using the netconf\_config module. The task references the interface variables that are unique per device. In which directory is the YAML file with these variables found?

- A. host\_vars directory
- B. home directory
- C. group\_vars directory
- D. current working directory

**Answer:** A

#### NEW QUESTION 59

A developer needs to configure an environment to orchestrate and configure. Which two tools should be used for each task? (Choose two.)

- A. Puppet for orchestration
- B. Terraform for orchestration
- C. Terraform for configuration
- D. Ansible for orchestration
- E. Ansible for configuration

**Answer:** BE

#### NEW QUESTION 63

.....



## THANKS FOR TRYING THE DEMO OF OUR PRODUCT

Visit Our Site to Purchase the Full Set of Actual 350-901 Exam Questions With Answers.

We Also Provide Practice Exam Software That Simulates Real Exam Environment And Has Many Self-Assessment Features. Order the 350-901 Product From:

<https://www.2passeasy.com/dumps/350-901/>

## Money Back Guarantee

### 350-901 Practice Exam Features:

- \* 350-901 Questions and Answers Updated Frequently
- \* 350-901 Practice Questions Verified by Expert Senior Certified Staff
- \* 350-901 Most Realistic Questions that Guarantee you a Pass on Your FirstTry
- \* 350-901 Practice Test Questions in Multiple Choice Formats and Updatesfor 1 Year