

300-430 Dumps

Implementing Cisco Enterprise Wireless Networks (ENWLSI)

<https://www.certleader.com/300-430-dumps.html>



NEW QUESTION 1

A wireless engineer must implement a corporate wireless network for a large company in the most efficient way possible. The wireless network must support 32 VLANs for 300 employees in different departments. Which solution must the engineer choose?

- A. Configure a second WLC to support half of the APs in the deployment.
- B. Configure one single SSID and implement Cisco ISE for VLAN assignment according to different user roles.
- C. Configure different AP groups to support different VLANs, so that all of the WLANs can be broadcast on both radios.
- D. Configure 16 WLANs to be broadcast on the 2.4-GHz band and 16 WLANs to be broadcast on the 5.0-GHz band.

Answer: B

NEW QUESTION 2

Which two restrictions are in place with regards to configuring mDNS? (Choose two.)

- A. mDNS uses only UDP port 5436 as a destination port.
- B. mDNS cannot use UDP port 5353 as the destination port.
- C. mDNS is not supported on FlexConnect APs with a locally switched WLAN.
- D. Controller software must be newer than 7.0.6+.
- E. mDNS is not supported over IPv6.

Answer: CD

NEW QUESTION 3

An engineer configures the wireless LAN controller to perform 802.1x user authentication. Which configuration must be enabled to ensure that client devices can connect to the wireless, even when WLC cannot communicate with the RADIUS?

- A. pre-authentication
- B. local EAP
- C. authentication caching
- D. Cisco Centralized Key Management

Answer: B

NEW QUESTION 4

Which two statements about the requirements for a Cisco Hyperlocation deployment are true? (Choose two.)

- A. After enabling Cisco Hyperlocation on Cisco CMX, the APs and the wireless LAN controller must be restarted.
- B. NTP can be configured, but that is not recommended.
- C. The Cisco Hyperlocation feature must be enabled on the wireless LAN controller and Cisco CMX.
- D. The Cisco Hyperlocation feature must be enabled only on the wireless LAN controller.
- E. If the Cisco CMX server is a VM, a high-end VM is needed for Cisco Hyperlocation deployments.

Answer: AC

NEW QUESTION 5

An engineer wants to configure WebEx to adjust the precedence and override the QoS profile on the WLAN. Which configuration is needed to complete this task?

- A. Change the WLAN reserved bandwidth for WebEx
- B. Create an AVC profile for WebEx
- C. Create an ACL for WebEx
- D. Change the AVC application WebEx-app-sharing to mark

Answer: B

NEW QUESTION 6

Which three properties are used for client profiling of wireless clients? (Choose three.)

- A. HTTP user agent
- B. DHCP
- C. MAC OUI
- D. hostname
- E. OS version
- F. IP address

Answer: ABC

NEW QUESTION 7

What is the difference between PIM sparse mode and PIM dense mode?

- A. Sparse mode supports only one switch
- B. Dense mode supports multiswitch networks.
- C. Sparse mode flood
- D. Dense mode uses distribution trees.
- E. Sparse mode uses distribution tree
- F. Dense mode floods.

- G. Sparse mode supports multiswitch network
- H. Dense mode supports only one switch.

Answer: C

NEW QUESTION 8

For security purposes, an engineer enables CPU ACL and chooses an ACL on the Security > Access Control Lists > CPU Access Control Lists menu. Which kind of traffic does this change apply to, as soon as the change is made?

- A. wireless traffic only
- B. wired traffic only
- C. VPN traffic
- D. wireless and wired traffic

Answer: A

NEW QUESTION 9

An engineer must implement Cisco Identity-Based Networking Services at a remote site using ISE to dynamically assign groups of users to specific IP subnets. If the subnet assigned to a client is available at the remote site, then traffic must be offloaded locally, and subnets are unavailable at the remote site must be tunneled back to the WLC. Which feature meets these requirements?

- A. learn client IP address
- B. FlexConnect local authentication
- C. VLAN-based central switching
- D. central DHCP processing

Answer: C

NEW QUESTION 10

Which devices can be tracked with the Cisco Context Aware Services?

- A. wired and wireless devices
- B. wireless devices
- C. wired devices
- D. Cisco certified wireless devices

Answer: A

Explanation:

Reference: <https://www.cisco.com/c/en/us/support/docs/wireless/context-aware-software/110836-cas-faq.html>

NEW QUESTION 10

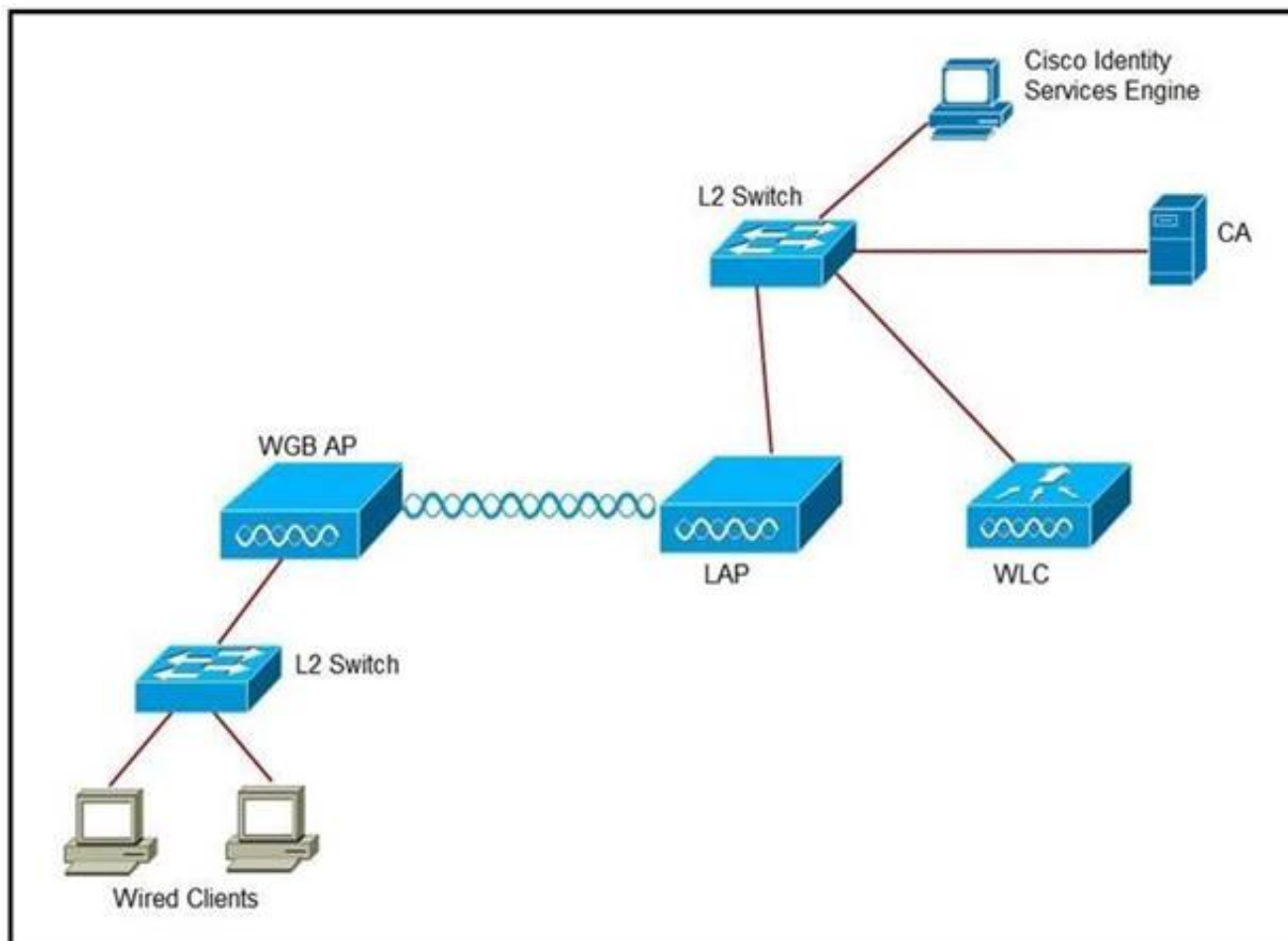
Which two steps are needed to complete integration of the MSE to Cisco Prime Infrastructure and be able to track the location of clients/rogues on maps? (Choose two.)

- A. Synchronize access points with the MSE.
- B. Add the MSE to Cisco Prime Infrastructure using the CLI credentials.
- C. Add the MSE to Cisco Prime Infrastructure using the Cisco Prime Infrastructure communication credentials configured during set up.
- D. Apply a valid license for Wireless Intrusion Prevention System.
- E. Apply a valid license for location tracking.

Answer: DE

NEW QUESTION 13

Refer to the exhibit. An engineer must connect a fork lift via a WGB to a wireless network and must authenticate the WGB certificate against the RADIUS server. Which three steps are required for this configuration? (Choose three.)



- A. Configure the certificate, WLAN, and radio interface on WGB.
- B. Configure the certificate on the WLC.
- C. Configure WLAN to authenticate using ISE.
- D. Configure the access point with the root certificate from ISE.
- E. Configure WGB as a network device in ISE.
- F. Configure a policy on ISE to allow devices to connect that validate the certificate.

Answer: ACF

NEW QUESTION 17

On a branch office deployment, it has been noted that if the FlexConnect AP is in standalone mode and loses connection to the WLC, all clients are disconnected, and the SSID is no longer advertised. Considering that FlexConnect local switching is enabled, which setting is causing this behavior?

- A. ISE NAC is enabled
B. 802.11r Fast Transition is enabled
C. Client Exclusion is enabled
D. FlexConnect Local Auth is disabled

Answer: D

NEW QUESTION 19

What is the default NMSP echo interval between Cisco MSE and a Wireless LAN Controller?

- A. 10 seconds
B. 15 seconds
C. 30 seconds
D. 60 seconds

Answer: B

Explanation:

Reference: https://www.cisco.com/en/US/docs/wireless/mse/3350/6.0/CAS/configuration/guide/msecg_ch4_CAS.html

NEW QUESTION 23

Where is Cisco Hyperlocation enabled on a Cisco Catalyst 9800 Series Wireless Controller web interface?

- A. Policy Profile
- B. AP Join Profile
- C. Flex Profile
- D. RF Profile

Answer: B

Explanation:

Reference: https://www.cisco.com/c/en/us/td/docs/wireless/controller/9800/config-guide/b_wl_16_10_cg/cisco-hyperlocation.html

NEW QUESTION 26

CMX Facebook Wi-Fi allows access to the network before authentication. Which two elements are available? (Choose two.)

- A. Allow HTTP traffic only before authentication and block all the traffic.
- B. Allow all the traffic before authentication and intercept HTTPS only.
- C. Allow HTTPs traffic only before authentication and block all other traffic.
- D. Allow all the traffic before authentication and intercept HTTP only.
- E. Allow SNMP traffic only before authentication and block all the traffic.

Answer: CD

Explanation:

Reference: https://www.cisco.com/c/en/us/td/docs/wireless/mse/8-0/CMX_Connect_Engage_Visitor_Connect/Guide/Cisco_CMX_Connect_Engage_Config_Guide_VC/CMX_Facebook_Wi-Fi.html

NEW QUESTION 30

A FlexConnect remote office deployment is using five 2702i APs indoors and two 1532i APs outdoors. When a code upgrade is performed and FlexConnect Smart AP Image Upgrade is leveraged, but no FlexConnect Master AP has been configured, how many image transfers between the WLC and APs will occur?

- A. 1
- B. 2
- C. 5
- D. 7

Answer: B

NEW QUESTION 34

What is an important consideration when implementing a dual SSID design for BYOD?

- A. After using the provisioning SSID, an ACL that used to make the client switch SSIDs forces the user to associate and traverse the network by MAC filtering.
- B. If multiple WLCs are used, the WLAN IDs must be exact for the clients to be provisioned and traverse the network correctly.
- C. SSIDs for this setup must be configured with NAC State-RADIUS NAC for the clients to authenticate with Cisco ISE, or with NAC State-ISE NAC for Cisco ISE to associate the client.
- D. One SSID is for provisioning and the other SSID is for gaining access to the network.
- E. The use of an ACL should not be enforced to make the client connect to the REAL SSID after provisioning.

Answer: D

NEW QUESTION 39

An engineer is configuring multicast for wireless for an all-company video meeting on a network using EIGRP and BGP within a single domain from a single source. Which type of multicast routing should be implemented?

- A. Protocol Independent Multicast Dense Mode
- B. Source Specific Multicast
- C. Multicast Source Discovery Protocol
- D. Protocol Independent Multicast Sparse Mode

Answer: D

NEW QUESTION 42

Which component must be integrated with Cisco DNA Center to display the location of a client that is experiencing connectivity issues?

- A. Cisco Hyperlocation Module
- B. Wireless Intrusion Prevention System
- C. Cisco Connected Mobile Experiences
- D. Cisco Mobility Services Engine

Answer: A

NEW QUESTION 47

An engineer configured a Cisco AireOS controller with two TACACS+ servers. The engineer notices that when the primary TACACS+ server fails, the WLC starts using the secondary server as expected, but the WLC does not use the primary server again until the secondary server fails or the controller is rebooted. Which cause of this issue is true?

- A. Fallback is enabled
- B. Fallback is disabled
- C. DNS query is disabled
- D. DNS query is enabled

Answer: B

NEW QUESTION 49

A Cisco WLC has been added to the network and Cisco ISE as a network device, but authentication is failing. Which configuration within the network device configuration should be verified?

- A. SNMP RO community
- B. device interface credentials
- C. device ID
- D. shared secret

Answer: D

NEW QUESTION 50

.....

Thank You for Trying Our Product

* 100% Pass or Money Back

All our products come with a 90-day Money Back Guarantee.

* One year free update

You can enjoy free update one year. 24x7 online support.

* Trusted by Millions

We currently serve more than 30,000,000 customers.

* Shop Securely

All transactions are protected by VeriSign!

100% Pass Your 300-430 Exam with Our Prep Materials Via below:

<https://www.certleader.com/300-430-dumps.html>