



**Cisco**

**Exam Questions 010-151**

Cisco Certified Technician (CCT) for Data Center

## About ExamBible

*[Your Partner of IT Exam](#)*

## Found in 1998

ExamBible is a company specialized on providing high quality IT exam practice study materials, especially Cisco CCNA, CCDA, CCNP, CCIE, Checkpoint CCSE, CompTIA A+, Network+ certification practice exams and so on. We guarantee that the candidates will not only pass any IT exam at the first attempt but also get profound understanding about the certificates they have got. There are so many alike companies in this industry, however, ExamBible has its unique advantages that other companies could not achieve.

## Our Advances

### \* 99.9% Uptime

All examinations will be up to date.

### \* 24/7 Quality Support

We will provide service round the clock.

### \* 100% Pass Rate

Our guarantee that you will pass the exam.

### \* Unique Gurantee

If you do not pass the exam at the first time, we will not only arrange FULL REFUND for you, but also provide you another exam of your claim, ABSOLUTELY FREE!

#### NEW QUESTION 1

Which method is a TCP/IP-based protocol for establishing and managing connections between IP-based storage devices, hosts, and clients?

- A. FCIP
- B. iFCP
- C. iSCSI
- D. FCoE

**Answer:** C

#### NEW QUESTION 2

Which fiber optic cable type is used most often with a Subscriber connector?

- A. dual-mode
- B. single-mode
- C. straight-mode
- D. multi-mode
- E. subscriber-mode

**Answer:** B

#### NEW QUESTION 3

Which type of connection across the network does a SAN allow for multiple servers to access an unlimited amount of storage devices?

- A. any-to-many
- B. many-to-any
- C. any-to-any
- D. any-to-one
- E. one-to-any
- F. one-to-one

**Answer:** C

#### NEW QUESTION 4

Which two statements about the Ethernet media are true? (Choose two.)

- A. A twisted-pair cable system has each pair of wires twisted together to reduce electromagnetic interferenc
- B. Compared to multimode fiber, the single-mode fiber is designed for shorter distances with higher cos
- C. 40 Gigabit Ethernet twinax cables deploy Enhanced Quad Small Form Factor Pluggable (QSFP+) connector
- D. The twinax cables can be found in either a shielded twisted-pair or an unshielded twisted-pair variatio

**Answer:** AC

#### NEW QUESTION 5

What is the wire transmission speed for 100GBASE-ER4 Ethernet?

- A. 100 Mb/s
- B. 1 Gb/s
- C. 10 Gb/s
- D. 100 Gb/s

**Answer:** D

#### NEW QUESTION 6

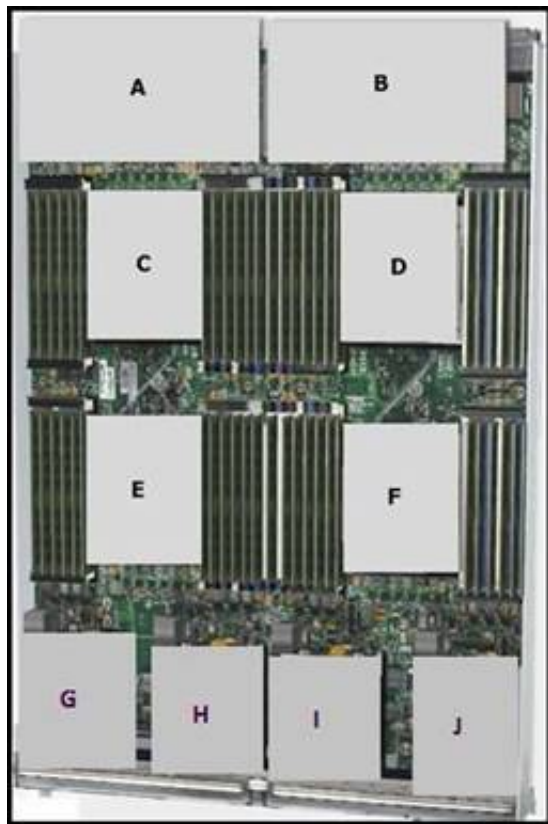
What does the system status LED look like when an over temperature or major alarm occurs on the Cisco UCS 6120XP Fabric Interconnect?

- A. Amber
- B. Red
- C. Blinking amber
- D. Blinking red

**Answer:** C

#### NEW QUESTION 7

Refer to the exhibit.



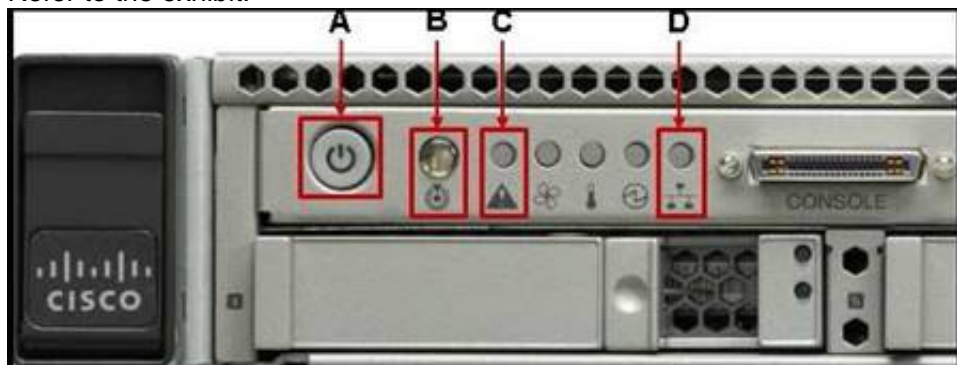
Which item does F represent?

- A. HDD 1
- B. TFP Module
- C. SuperCap Module
- D. CPU 2
- E. CMOS Battery

**Answer:** D

#### NEW QUESTION 8

Refer to the exhibit.



Which statement correctly identifies the front panel LEDs on the Cisco UCS C220 Server?

- A. A is power button and power status LED; B is identification button and LED; C is system status LED; D is network link activity LED
- B. A is network link activity LED; B is system status LED; C is power button and power status LED; D is identification button and LED
- C. A is system status LED; B is network link activity LED; C is power button and power status LED; D is identification button and LED
- D. A is network link activity LED; B is system status LED; C is identification button and LED; D is power button and power status LED

**Answer:** A

#### NEW QUESTION 9

Which two major components does a Cisco Nexus 1000V Series Switch have? (Choose two.)

- A. Virtual Fiber Channel Module
- B. Virtual Ethernet Module
- C. Virtual Supervisor Module
- D. Virtual Memory Controller Module
- E. Virtual Network Module

**Answer:** BC

#### NEW QUESTION 10

Which Cisco Nexus 5000 Series model supports 1/10G BASE-T ports?

- A. Cisco Nexus 5548P
- B. Cisco Nexus 5548UP
- C. Cisco Nexus 5596UP
- D. Cisco Nexus 5596T

**Answer:** D

#### NEW QUESTION 10

Which Cisco MDS model supports the most Fibre Channel ports per chassis?

- A. MDS 9513
- B. MDS 9509
- C. MDS 9506
- D. MDS 9250i

**Answer: A**

#### NEW QUESTION 15

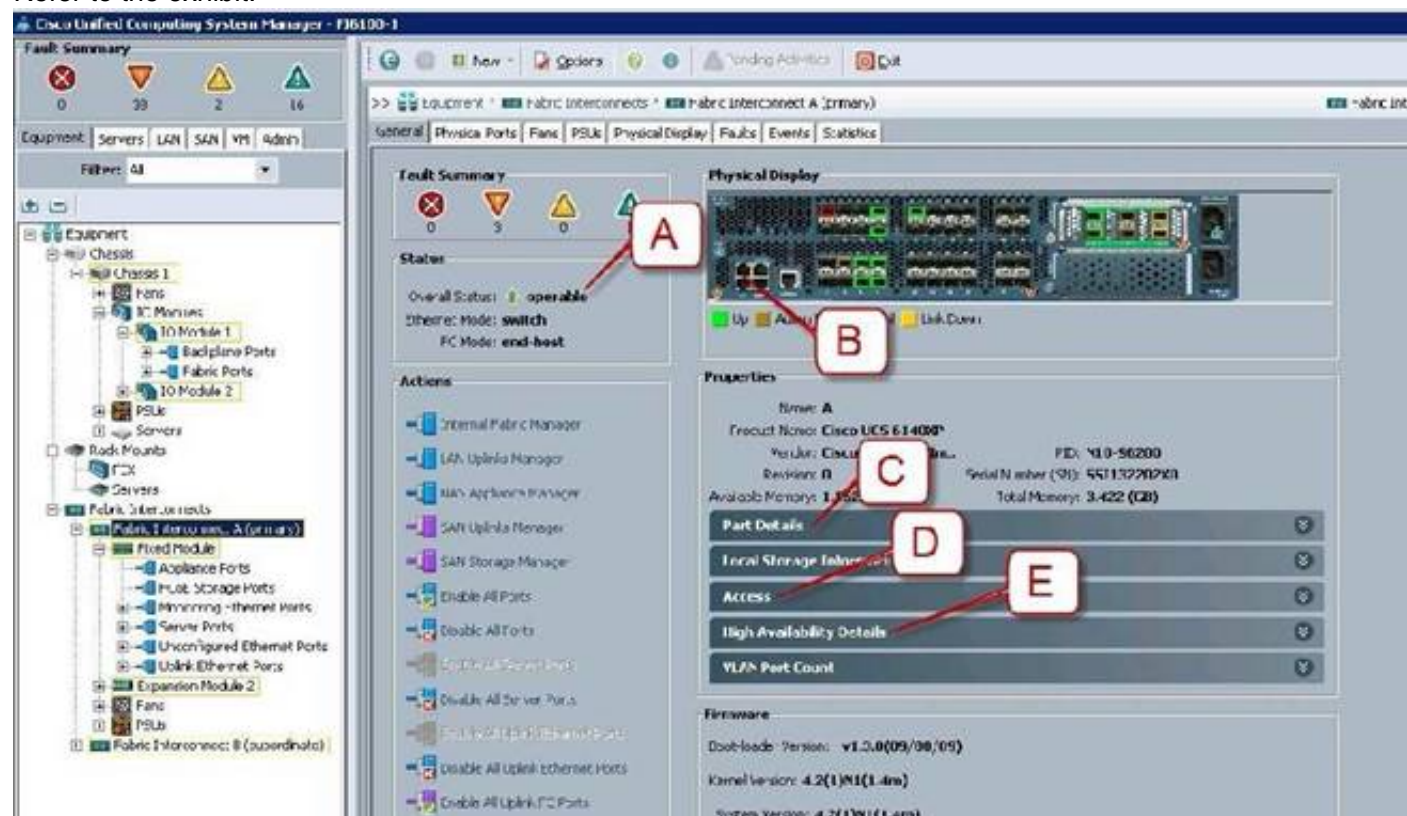
Which type of optics module is supported by a 12-port 100 GE Cisco Nexus 7700 F3 Series I/O module?

- A. CPAK
- B. QSFP+
- C. SFP/SFP+
- D. CFP

**Answer: A**

#### NEW QUESTION 17

Refer to the exhibit.



Where is the best place to see whether the system is ready for a Fabric Interconnect failover?

- A. A - Overall Status operable
- B. B - L1 Connection
- C. C - Part Details
- D. D - Access
- E. E - High Availability Details

**Answer: E**

#### NEW QUESTION 18

Which command saves the active configuration to NVRAM?

- A. copy startup-config running-config
- B. copy active-config backup-config
- C. copy running-config startup-config
- D. copy backup-config active-config

**Answer: C**

#### NEW QUESTION 23

Refer to the exhibit.



Where is the best place to find the B200 BIOS version used in a specific Cisco UCS Manager version?

- A. A - Installed Firmware
- B. B - Packages



- C. C - Images
- D. D - Capability Catalog
- E. E - Management Extension

**Answer:** B

#### NEW QUESTION 26

Which command syntax is correct to reset the admin password when the switch is in the kickstart prompt "switch(boot) #"?

- A. exec -> admin-password <password>
- B. connect local-mgmt -> admin-password <password>
- C. configure terminal -> admin-password <password>
- D. connect nxos -> admin-password <password>
- E. admin-password <password>

**Answer:** C

#### NEW QUESTION 31

Which two commands display the version of Cisco NX-OS code that the device is currently running on? (Choose two.)

- A. show version
- B. show module
- C. show interface
- D. show boot
- E. show license

**Answer:** AB

#### NEW QUESTION 35

On the Sensors page from the CIMC view, which four tabs are displayed to view further information? (Choose four.)

- A. Power Supply
- B. Fan
- C. Memory
- D. CPU
- E. LEDs
- F. Temperature

**Answer:** ABEF

#### NEW QUESTION 40

Which tool does a network administrator not need when installing hardware?

- A. cable tester
- B. wrench set
- C. cable wraps
- D. needle-nose pliers
- E. PCMCIA memory
- F. soldering iron with grounded tip

**Answer:** F

#### NEW QUESTION 42

Which three statements about powering down a Cisco UCS C-Series Rack-Mount Server to perform maintenance or replacement are true? (Choose three.)

- A. Standby power mode: Power is supplied only to the service processor and the cooling fans, and it is safe to power off the server from this mod
- B. Power status LE
- C. Green indicates that the server is in main power mode and can be safely powered of
- D. Graceful shutdown: Press and release the power butto
- E. The operating system performs a graceful shutdown, and the server goes to standby mode, which is indicated by an amber power status LE
- F. Disconnect the power cords from the power supplies in your server to completely power off the serve
- G. Only an emergency shutdown can be performed using the power button on the server front pane
- H. The Cisco UCS C-Series Rack-Mount Server has only one power mod

**Answer:** ACD

#### NEW QUESTION 43

Which two statements about DIMM replacement in Cisco UCS Servers are true? (Choose two.)

- A. In blade servers, DIMMs can be installed in either 1, 2, 4, or 8 DIMMs per channe
- B. Rack-mount and blade servers have memory fault LEDs that indicate which DIMM requires attentio
- C. In servers that require pairs of DIMMs, the pairs must be identical (manufacturer, size, part #, and so on).
- D. If the memory in a server is not fully populated, you can install DIMMs in any open slo

**Answer:** AC

#### NEW QUESTION 48

Which two remote file system methods are used in the training material to transfer firmware to the Fabric Interconnect? (Choose two.)

- A. FTPS
- B. FTP
- C. TFTP
- D. RSH

**Answer:** BC

#### NEW QUESTION 51

When a host firmware package policy is created, what must it be associated with to upgrade the BIOS?

- A. blade or blade pool
- B. service profile
- C. boot policy
- D. service template

**Answer:** B

#### NEW QUESTION 53

Up to what speed can Category 5e UTP cable transmit data?

- A. 10 Mb/s
- B. 100 Mb/s
- C. 1000 Mb/s
- D. 10000 Mb/s

**Answer:** C

#### NEW QUESTION 56

Which two statements about the Cisco Nexus 5596UP switch are true? (Choose two.)

- A. Its power supplies and fan trays are hot-swappable
- B. It supports unified port
- C. It is offered in a one-rack-unit form factor
- D. It has one expansion slot
- E. It supports up to 96 10G BASE-T port

**Answer:** AB

#### NEW QUESTION 57

Which type of optics module is supported by a 6-port 40 GE Cisco Nexus 7000 M2 Series I/O module?

- A. CPAK
- B. QSFP+
- C. SFP/SFP+
- D. CFP

**Answer:** B

#### NEW QUESTION 60

How many 10GBASE-T port licenses are preinstalled on a Cisco Nexus 3064-32T?

- A. 16
- B. 32
- C. 48
- D. 64

**Answer:** B

#### NEW QUESTION 62

What is the maximum number of supervisor modules that the Cisco MDS 9710 Switch supports?

- A. 1
- B. 2
- C. 4
- D. 6
- E. 8

**Answer:** B

#### NEW QUESTION 63

DRAG DROP

Drag the cable or connector on the left to the correct interface on the right.

KVM dongle	Fabric Interconnect to Fabric Extender
straight-through Ethernet cable	console port
mini USB cable	MDS
Twinax cable	C-Series Rack Server
Fiber Channel SFP	from laptop to Management Port
rolled RJ-45 cable	
SAS cable	

- A. Mastered  
B. Not Mastered

Answer: A

Explanation:

Drag the cable or connector on the left to the correct interface on the right.

KVM dongle	Twinax cable
straight-through Ethernet cable	rolled RJ-45 cable
mini USB cable	Fiber Channel SFP
Twinax cable	KVM dongle
Fiber Channel SFP	straight-through Ethernet cable
rolled RJ-45 cable	
SAS cable	

NEW QUESTION 64  
.....



## Relate Links

**100% Pass Your 010-151 Exam with ExamBible Prep Materials**

<https://www.exambible.com/010-151-exam/>

## Contact us

We are proud of our high-quality customer service, which serves you around the clock 24/7.

Viste - <https://www.exambible.com/>