

Exam Questions 98-366

MTA Networking Fundamentals

<https://www.2passeasy.com/dumps/98-366/>



NEW QUESTION 1

What type of DNS record maps host names to addresses?

- A. Mail Exchanger (MX) DNS record
- B. Service (SRV) DNS record
- C. Host (A) DNS record
- D. Canonical (CNAME) DNS record

Answer: C

NEW QUESTION 2

Which of the following determines the media access method that is used in a network?

- A. Number of hosts connected to the network
- B. Number of domain servers on the segment
- C. Maximum speed of the media
- D. Topology and protocols

Answer: D

NEW QUESTION 3

You need to run four Ethernet network drops. Each drop is approximately 125 feet/46.33 meters. An interference exists along the path of each drop. You need to ensure that interference is reduced. Which cable type should you use?

- A. STP Cat5e
- B. UTPCat5e
- C. Cat3
- D. UTPCat6

Answer: A

NEW QUESTION 4

The service that resolves fully qualified domain names (FQDN) to IP addresses is:

- A. Windows Internet Name Service (WINS).
- B. Domain Name Service (DNS).
- C. Internet Service Provider (ISP).
- D. Address Resolution Protocol (ARP).

Answer: B

NEW QUESTION 5

HOTSPOT

For each of the following statements, select Yes if the statement is true. Otherwise, select No. Each correct selection is worth one point.

Answer Area

	Yes	No
An IPv4 address consists of 64 bits.	<input type="radio"/>	<input type="radio"/>
It is standard practice to divide the binary bits of an IPv4 address into 8-bit fields named octets.	<input type="radio"/>	<input type="radio"/>
The value of any IPv4 octet can be from 0 to 256.	<input type="radio"/>	<input type="radio"/>

- A. Mastered
- B. Not Mastered

Answer: A

Explanation:

Answer Area

	Yes	No
An IPv4 address consists of 64 bits.	<input type="radio"/>	<input checked="" type="radio"/>
It is standard practice to divide the binary bits of an IPv4 address into 8-bit fields named octets.	<input checked="" type="radio"/>	<input type="radio"/>
The value of any IPv4 octet can be from 0 to 256.	<input type="radio"/>	<input checked="" type="radio"/>

NEW QUESTION 6

You are setting up a network computer game.

You need to open up ports on your firewall so your friends can join the network. Which command displays the ports that your computer is listening for?

- A. nslookup
- B. nbtstat
- C. ping
- D. netstat

Answer: A

NEW QUESTION 7

What happens when an 802.11b node starts broadcasting within the range of an 802.11g access point?

- A. The access point will transmit, but the node will be unable to receive.
- B. A connection will be established,
- C. Both the node and the access point will be unable to transmit.
- D. The node will transmit, but the access point will be unable to receive.

Answer: B

NEW QUESTION 8

The default gateway address identifies the:

- A. Device that will connect the computer to the local network.
- B. Device that will connect the computer to a remote network.
- C. Server that will provide name services for the computer.
- D. Server that will authenticate the user of the computer.

Answer: B

NEW QUESTION 9

HOTSPOT

For each of the following statements, select Yes if the statement is true. Otherwise, select No. Each correct selection is worth one point.

Answer Area

	Yes	No
A switch sends unicast packets to one destination port only.	<input type="radio"/>	<input type="radio"/>
A switch floods ports if it does not know where to send a packet.	<input type="radio"/>	<input type="radio"/>
A switch sends broadcast packets to the uplink port only.	<input type="radio"/>	<input type="radio"/>

- A. Mastered
- B. Not Mastered

Answer: A

Explanation:

Answer Area

	Yes	No
A switch sends unicast packets to one destination port only.	<input checked="" type="radio"/>	<input type="radio"/>
A switch floods ports if it does not know where to send a packet.	<input checked="" type="radio"/>	<input type="radio"/>
A switch sends broadcast packets to the uplink port only.	<input type="radio"/>	<input checked="" type="radio"/>

NEW QUESTION 10

DRAG DROP

Match the IPv4 address type to the corresponding definition.

To answer, drag the appropriate definition from the column on the left to the address type on the right. Each definition may be used once, more than once, or not at all. Each correct match is worth one point.

Definitions	Answer Area
assigned to a single network interface located on a specific subnet on the network and used for one-to-one communications	Multicast Definition
assigned to the variable portion of an IPv4 address that is used to identify a network node's interface on a subnet	Broadcast Definition
assigned to one or more network interfaces located on various subnets on the network and used for one-to-many communications	Unicast Definition
assigned to all network interface located on a subnet on the network and used for one-to-everyone-on-a-subnet communications	

- A. Mastered
- B. Not Mastered

Answer: A

Explanation:

Definitions	Answer Area
assigned to a single network interface located on a specific subnet on the network and used for one-to-one communications	Multicast assigned to one or more network interfaces located on various subnets on the network and used for one-to-many communications
assigned to the variable portion of an IPv4 address that is used to identify a network node's interface on a subnet	Broadcast assigned to all network interface located on a subnet on the network and used for one-to-everyone-on-a-subnet communications
assigned to one or more network interfaces located on various subnets on the network and used for one-to-many communications	Unicast assigned to a single network interface located on a specific subnet on the network and used for one-to-one communications
assigned to all network interface located on a subnet on the network and used for one-to-everyone-on-a-subnet communications	

NEW QUESTION 10

To protect a network when it is connected to the Internet, you should use a:

- A. Bridge
- B. Firewall
- C. Switch
- D. Router

Answer: B

NEW QUESTION 11

You ping a server by using fully qualified domain name (FQDN) and do not receive a response. You then ping the same server by using its IP address and receive a response.

Why do you receive a response on the second attempt but not on the first attempt?

- A. PING is improperly configured.
- B. The DNS is not resolving.
- C. The DHCP server is offline.
- D. NSLOOKUP is stopped.

Answer: B

NEW QUESTION 12

The default port used for telnet is:

- A. 23
- B. 25
- C. 80
- D. 8080

Answer: A

NEW QUESTION 13

This question requires that you evaluate the underlined text to determine if it is correct.

The loopback address of your computer is 127.0.0.1.

Select the correct answer if the underlined text does not make the statement correct. Select 'No change is needed' if the underlined text makes the statement correct.

- A. 10.0.1.1
- B. 169.254.0.5
- C. 192168.1.1
- D. No change is needed

Answer: D

NEW QUESTION 15

Internet Key Exchange (IKE) is responsible for which two functions? (Choose two.)

- A. Establishing network speed parameters
- B. Verifying the client's patch level
- C. Negotiating algorithms to use
- D. Exchanging key information

Answer: AB

NEW QUESTION 19

A university has network links between various locations. Where would a T3 connection be appropriate?

- A. Server to network in the main campus server room
- B. Main campus to a large satellite campus
- C. Computer lab PC to lab printer
- D. Library laptop PC to Internet

Answer: A

NEW QUESTION 21

The command-line tool used to list a host's active incoming connections is:

- A. NETSTAT
- B. IPCONFIG
- C. NSLOOKUP
- D. PING

Answer: A

NEW QUESTION 22

VPNs are implemented to provide:

- A. A secure connection within a private network.
- B. A secure connection through public networks.
- C. Additional encryption by using IPSec.
- D. Additional security for selected computers.

Answer: B

NEW QUESTION 27

A characteristic of the mesh topology is that it:

- A. Uses a central hub.
- B. Cannot use wired connections.
- C. Uses redundant paths.
- D. Cannot use wireless connections.

Answer: C

NEW QUESTION 30

This question requires that you evaluate the underlined text to determine if it is correct.

A secondary zone is the first DNS zone to which all updates for the records that belong to that zone are written.

Select the correct answer if the underlined text does not make the statement correct. Select 'No change is needed' if the underlined text makes the statement correct.

- A. Primary zone
- B. Stub zone
- C. Conditional forwarding zone
- D. No change is needed.

Answer: A

NEW QUESTION 32

Which technology provides the highest bit rate?

- A. T1
- B. E1
- C. DS3
- D. ISDN

Answer: C

NEW QUESTION 35

Which setting is used to determine the Domain Name System (DNS) settings on a client computer?

- A. TELNET
- B. NSLOOKUP

C. PATHPING
D. NETSTAT

Answer: B

NEW QUESTION 37

HOTSPOT

For each of the following statements, select Yes if the statement is true. Otherwise, select No. Each correct selection is worth one point.

Answer Area

	Yes	No
IPv6 addresses are 64-bit in length.	<input type="radio"/>	<input type="radio"/>
IPv6 addresses are divided into 8-bit blocks.	<input type="radio"/>	<input type="radio"/>
IPv6 addresses are represented by dotted-decimal notation.	<input type="radio"/>	<input type="radio"/>

A. Mastered
B. Not Mastered

Answer: A

Explanation:

Answer Area

	Yes	No
IPv6 addresses are 64-bit in length.	<input type="radio"/>	<input checked="" type="radio"/>
IPv6 addresses are divided into 8-bit blocks.	<input type="radio"/>	<input checked="" type="radio"/>
IPv6 addresses are represented by dotted-decimal notation.	<input type="radio"/>	<input checked="" type="radio"/>

NEW QUESTION 39

In local area network (LAN) topologies, the primary media access methods are: (Choose two.)

A. Contention
B. Negotiation
C. Kerberos
D. Token passing

Answer: AD

NEW QUESTION 41

HOTSPOT

For each of the following statements, select Yes if the statement is true. Otherwise, select No. Each correct selection is worth one point.

Answer Area

	Yes	No
A wireless bridge connects Ethernet-based devices to the network.	<input type="radio"/>	<input type="radio"/>
A wireless bridge increases the wireless signal strength of the access point.	<input type="radio"/>	<input type="radio"/>
Wireless bridges always work in pairs.	<input type="radio"/>	<input type="radio"/>

- A. Mastered
 B. Not Mastered

Answer: A

Explanation:

Answer Area

	Yes	No
A wireless bridge connects Ethernet-based devices to the network.	<input checked="" type="radio"/>	<input type="radio"/>
A wireless bridge increases the wireless signal strength of the access point.	<input type="radio"/>	<input checked="" type="radio"/>
Wireless bridges always work in pairs.	<input checked="" type="radio"/>	<input type="radio"/>

NEW QUESTION 43

A VPN is a/an:

- A. Encrypted connection across the Internet.
 B. Virtual network within your local area network (LAN).
 C. Communication tunnel between VLANs.
 D. Personal network for your use only.

Answer: A

NEW QUESTION 47

A computer that has an IP address of 169.254.0.1 cannot access the network. Which of the following services should you confirm is available?

- A. WINS
 B. DNS
 C. DHCP
 D. TFTP

Answer: C

NEW QUESTION 48

One reason to replace an unmanaged switch with a managed switch is to:

- A. Manage the routing tables.
 B. Support multiple VLANs.
 C. Reduce collision domains.
 D. Route between networks,

Answer: :B

NEW QUESTION 53

A node within a local area network (LAN) must have a network interface device and a:

- A. Network account
- B. Table of all network nodes
- C. Host address
- D. Resource to share

Answer: C

NEW QUESTION 57

What are two advantages of using star topology rather than ring topology in a computer lab workgroup? (Choose two.)

- A. Failure of a central connectivity device does not bring down the entire network.
- B. A central connection point allows for flexibility and scalability.
- C. Data travels on redundant paths, so one cable cannot stop its transmission.
- D. A cable problem within the group affects two nodes, at most.

Answer: BD

NEW QUESTION 60

Which two are published IEEE 802.11 wireless transmission standards? (Choose two.)

- A. 802.11f
- B. 802.11g
- C. 802.11k
- D. 802.11m
- E. 802.11n

Answer: BE

NEW QUESTION 64

Which of these is a public address space?

- A. 192.168.0.0/16
- B. 197.16.0.0/12
- C. 10.0.0.0/8
- D. 172.16.0.0/12

Answer: D

NEW QUESTION 66

Tracert is used to:

- A. Manage routing tables dynamically.
- B. Manage session-oriented connections between nodes.
- C. Report the route taken by packets across an IP network.
- D. Report the shortest route between different networks.

Answer: C

NEW QUESTION 69

You run the ipconfig command. The output is shown in the following image:



```
Windows IP Configuration

Wireless LAN adapter Wireless Network Connection 3:

    Media State . . . . . : Media disconnected
    Connection-specific DNS Suffix  . :

Wireless LAN adapter Wireless Network Connection:

    Connection-specific DNS Suffix  . :
    IPv6 Address. . . . . : 2602:304:aecf:a929:cce2:4be1:be2a:260
    Temporary IPv6 Address. . . . . : 2602:304:aecf:a929:f09e:893:6519:6a2
    Link-local IPv6 Address . . . . . : fe80::cce2:4be1:be2a:260%17
    IPv4 Address. . . . . : 192.168.1.65
    Subnet Mask . . . . . : 255.255.255.0
    Default Gateway . . . . . :
```

From these settings, you can tell that the computer:

- A. Will have limited Internet access
- B. Will have full Internet access
- C. Will not be able to access the Internet

D. Will not be able to access the local network

Answer: A

NEW QUESTION 72

HOTSPOT

For each of the following statements, select Yes if the statement is true. Otherwise, select No. Each correct selection is worth one point.

Answer Area

	Yes	No
HTTP, TELNET, FTP, and SMTP protocols operate on Layer 7 of the OSI model.	<input type="radio"/>	<input type="radio"/>
Layer 4 of the OSI model controls dialogue between computers.	<input type="radio"/>	<input type="radio"/>
Layer 3 of the OSI model controls routing between network devices.	<input type="radio"/>	<input type="radio"/>

- A. Mastered
- B. Not Mastered

Answer: A

Explanation:

Answer Area

	Yes	No
HTTP, TELNET, FTP, and SMTP protocols operate on Layer 7 of the OSI model.	<input checked="" type="radio"/>	<input type="radio"/>
Layer 4 of the OSI model controls dialogue between computers.	<input type="radio"/>	<input checked="" type="radio"/>
Layer 3 of the OSI model controls routing between network devices.	<input checked="" type="radio"/>	<input type="radio"/>

NEW QUESTION 76

Teredo tunneling is a protocol that:

- A. Translates Internet Protocol version 4 (IPv4) to Internet Protocol version 6 (IPv6).
- B. Allows IPv6 connectivity through IPv4 devices.
- C. Provides VPN security.
- D. Dynamically allocates IPv6 addresses.

Answer: B

NEW QUESTION 79

This question requires that you evaluate the underlined text to determine if it is correct. IPv4 multicast addresses range from 192.168.0.0 to 192.168.255.255. Select the correct answer if the underlined text does not make the statement correct. Select "No change is needed" if the underlined text makes the statement correct.

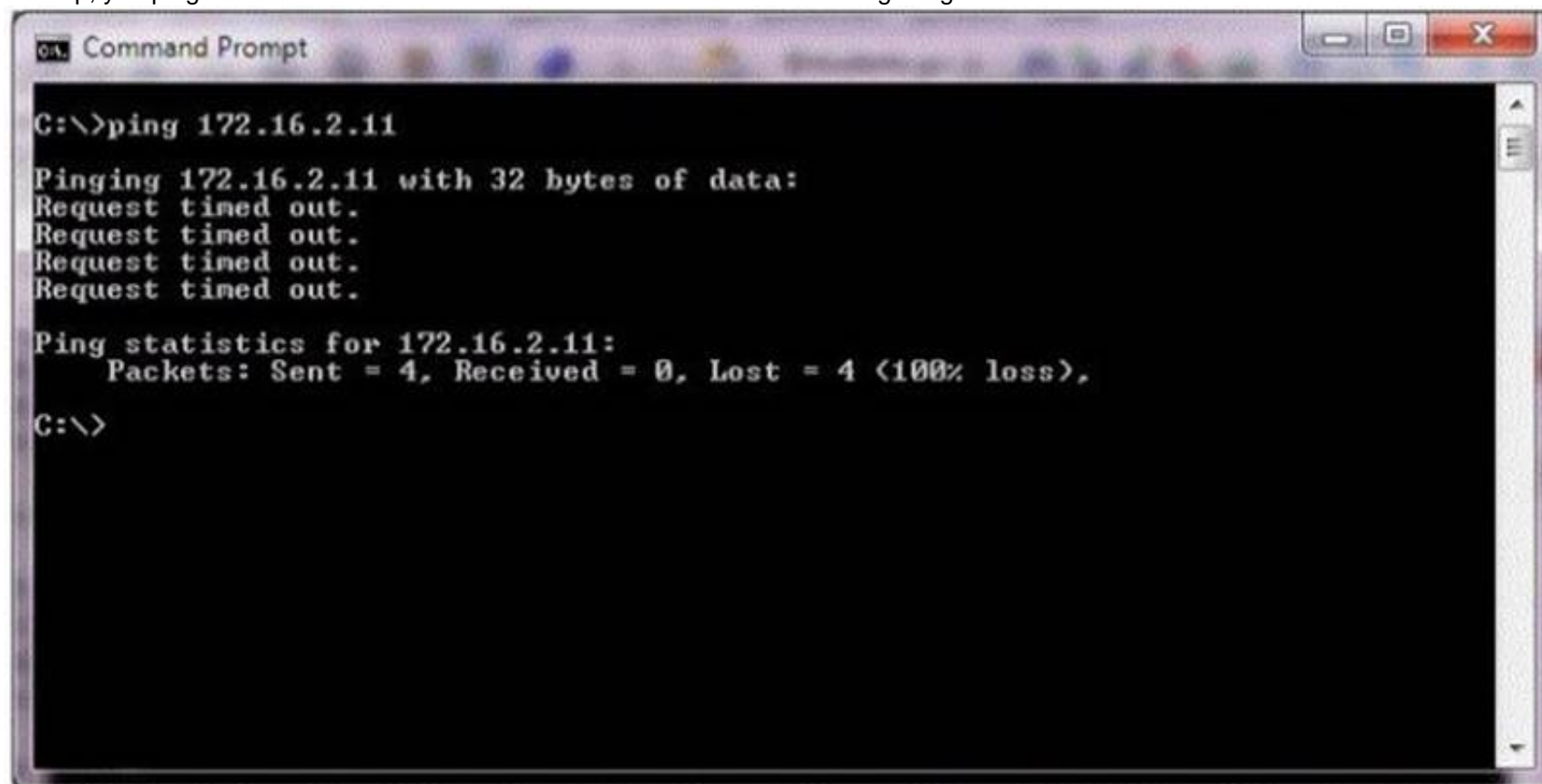
- A. 127.0.0.0 to 127.255.255.255
- B. 172.16.0.0 to 172.31.255.255
- C. 224.0.0.0 to 239.255.255.255
- D. No change is needed

Answer: C

NEW QUESTION 83

HOTSPOT

You receive a call from a family member who is unable to connect to a game server. You learn that the server's IP is 172.16.2.11. To help, you ping the server and receive the information shown in the following image:



Use the drop-down menus to select the answer choice that completes each statement. Each correct selection is worth one point.

Answer Area

The server **[answer choice]** your ping requests.

did not return

did return

may or may not have returned

The server status is **[answer choice]**

up.

down.

unknown.

- A. Mastered
- B. Not Mastered

Answer: A

Explanation:

Answer Area

The server **[answer choice]** your ping requests.

did not return

did return

may or may not have returned

The server status is **[answer choice]**

up.

down.

unknown.

NEW QUESTION 85

Which type of port is used to support VLAN traffic between two switches?

- A. Virtual port
- B. WAN port
- C. Trunk port
- D. LAN port

Answer: C

NEW QUESTION 89

This question requires that you evaluate the underlined text to determine if it is correct. According to the OSI model, encryption takes place on the transport layer. Select the correct answer if the underlined text does not make the statement correct. Select 'No change is needed' if the underlined text makes the statement correct.

- A. Presentation
- B. Network
- C. Application
- D. No change is needed

Answer: A

NEW QUESTION 94

Which protocol can be used to encrypt packets on the Internet?

- A. SNMP
- B. HTTPS
- C. TFTP
- D. HTTP

Answer: B

NEW QUESTION 98

The ipconfig command will:

- A. Configure routers
- B. Display a client's address
- C. Display a client's broadcast mode
- D. Configure DHCP clients

Answer: B

NEW QUESTION 101

This question requires that you evaluate the underlined text to determine if it is correct.

The four IEEE standards, 802.11a, b, g, and n, are collectively known as mobile ad hoc networks.

Select the correct answer if the underlined text does not make the statement correct. Select 'No change is needed' if the underlined text makes the statement correct.

- A. WiMAX
- B. Bluetooth
- C. WiFi
- D. No change is needed

Answer: C

NEW QUESTION 106

Which of these represents the Internet Protocol version 6 (IPv6) loopback address?

- A. 127.0.0.1
- B. 192.168.0.1
- C. FEC0:A8C0::AA01
- D. ::1

Answer: D

NEW QUESTION 111

What are three characteristics of Ethernet network topology? (Choose three.)

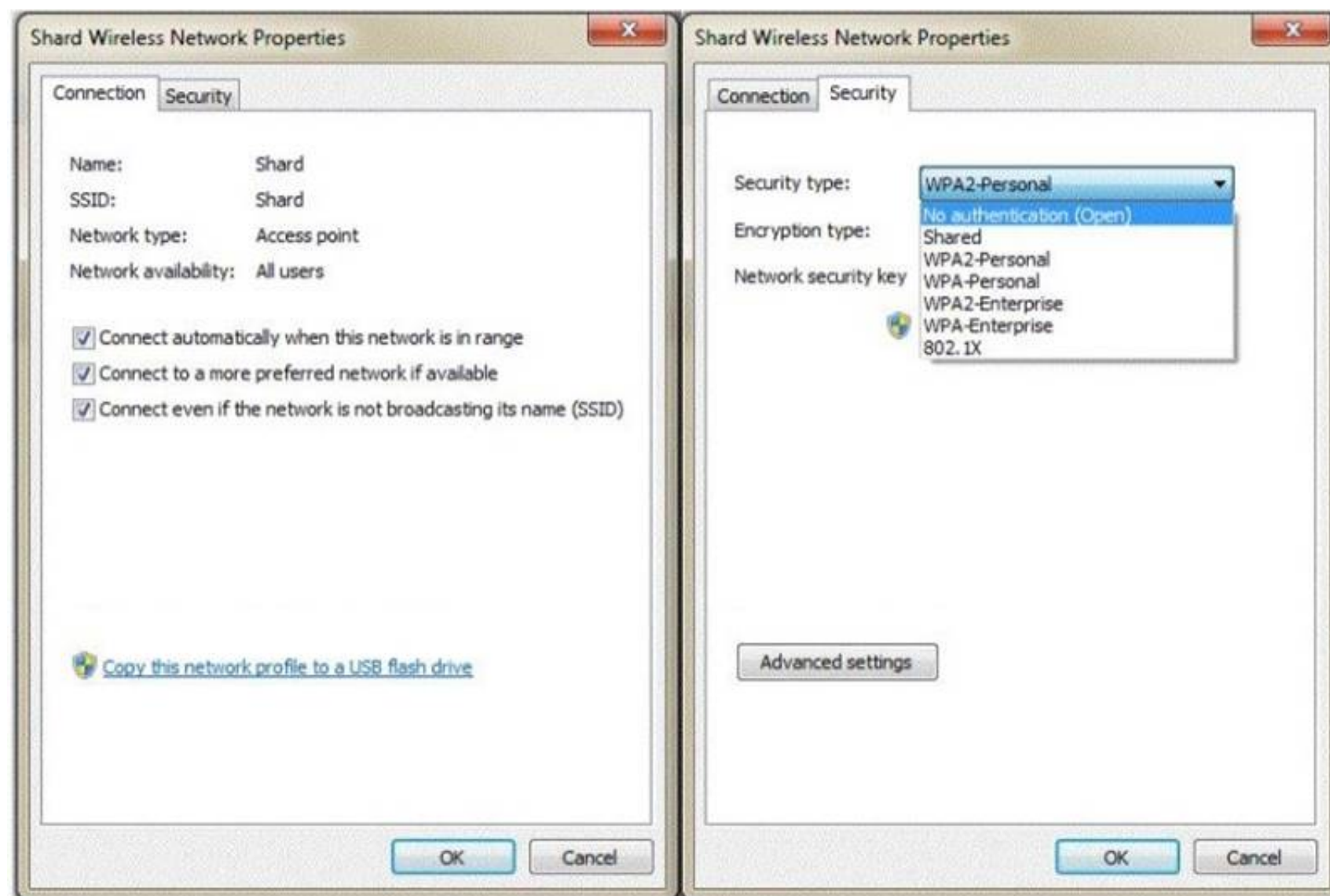
- A. It uses tokens to avoid collisions on the network.
- B. It can use coaxial, twisted pair, and fiber optic media.
- C. It comprises the largest share of the networks in place today.
- D. It is a non-switching protocol.
- E. It can negotiate different transmission speeds.

Answer: ABD

NEW QUESTION 116

HOTSPOT

You are configuring a wireless network with the Wireless Network Properties that are shown in the following image:



Use the drop-down menus to select the answer choice that completes each statement. Each correct selection is worth one point.

Answer Area

To manually select which network to connect to, you should uncheck **[answer choice]**

☐

Connect automatically when this network is in range.
Connect to a more preferred network if available.
Connect even if the network is not broadcasting its name (SSID).

The **[answer choice]** security type requires certificates for its encryption.

☐

WPA-Enterprise
WPA2-Personal
802.1X

- A. Mastered
- B. Not Mastered

Answer: A

Explanation:

Answer Area

To manually select which network to connect to, you should uncheck **[answer choice]**

☐

Connect automatically when this network is in range.
Connect to a more preferred network if available.
Connect even if the network is not broadcasting its name (SSID).

The **[answer choice]** security type requires certificates for its encryption.

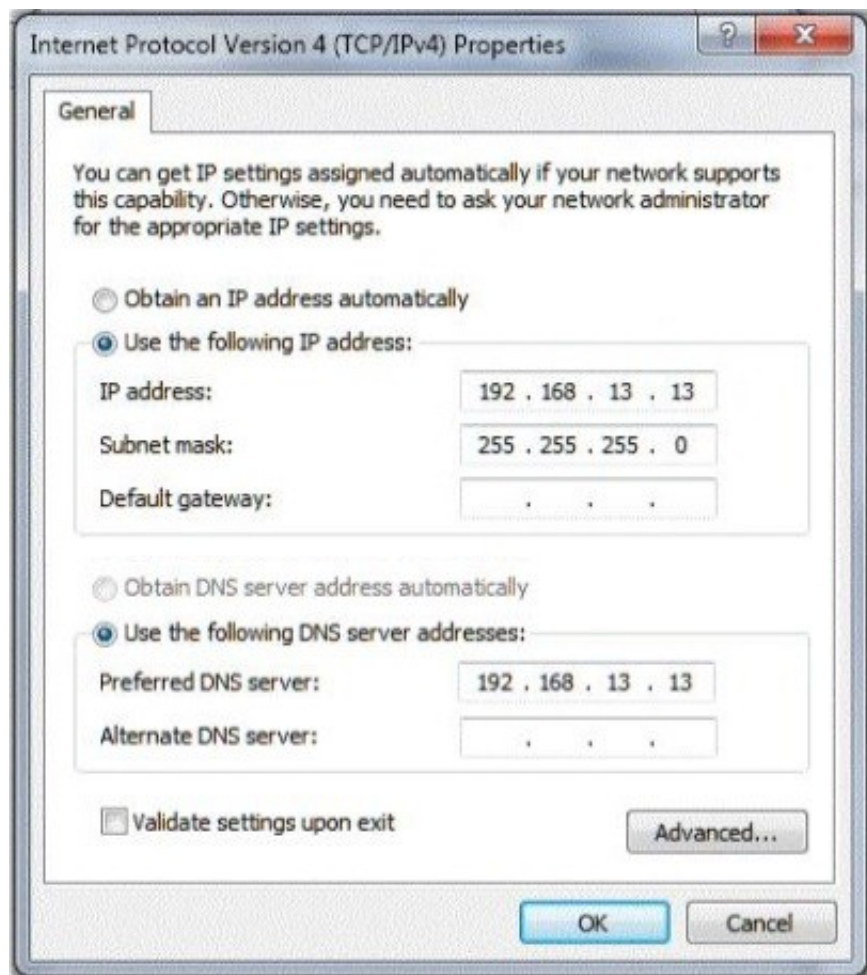
☐

WPA-Enterprise
WPA2-Personal
802.1X

NEW QUESTION 120

HOTSPOT

You cannot get to any site on the Internet or on the school's intranet. Your school uses DHCP. You check your network settings, which are configured as shown in the following image:



You need to change the settings to access websites.

Use the drop-down menus to select the answer choice that completes each statement. Each correct selection is worth one point.

Answer Area

Changing the IP address settings to **[answer choice]** will allow Internet access.

have a default gateway address of 192.168.1.1

have a default gateway address of 192.168.13.13

obtain an IP address automatically

Setting the DNS server settings to **[answer choice]** will allow the user's computer to look up website addresses.

obtain DNS server address automatically

set Preferred DNS server to Nothing

set Alternate DNS server to 192.168.13.13

- A. Mastered
- B. Not Mastered

Answer: A

Explanation:

Answer Area

Changing the IP address settings to **[answer choice]** will allow Internet access.

have a default gateway address of 192.168.1.1

have a default gateway address of 192.168.13.13

obtain an IP address automatically

Setting the DNS server settings to **[answer choice]** will allow the user's computer to look up website addresses.

obtain DNS server address automatically

set Preferred DNS server to Nothing

set Alternate DNS server to 192.168.13.13

NEW QUESTION 123

The topology of a local area network (LAN) is defined by the:

- A. Number of devices to connect.
- B. Physical and logical characteristics.
- C. Distance between workstations.
- D. Type of cable being used.

Answer: B

NEW QUESTION 127

What is the DNS record type that specifies an alias name of another address record?

- A. MX
- B. CNAME

- C. NS
- D. SOA

Answer: C

NEW QUESTION 131

The type of connector used on a 100BaseT Ethernet cable is:

- A. RJ-11
- B. RJ-45.
- C. TNC.
- D. BNC.

Answer: B

NEW QUESTION 133

This question requires that you evaluate the underlined text to determine if it is correct. All session data is encrypted between all machines while using telnet. Select the correct answer if the underlined text does not make the statement correct. Select 'No change is needed' if the underlined text makes the statement correct.

- A. Not encrypted
- B. Encrypted between any Windows machines
- C. Encrypted only to any non-Windows machines
- D. No change is needed

Answer: A

NEW QUESTION 135

Which of the following is a public IP address?

- A. 10.156.89.1
- B. 68.24.78.221
- C. 172.16.152.48
- D. 192.168.25.101

Answer: B

NEW QUESTION 140

The function of a router is to:

- A. Provide IP subnet masks for hosts.
- B. Forward traffic to other networks.
- C. Broadcast routing tables to clients.
- D. Store tables for name resolution.

Answer: B

NEW QUESTION 144

What type of record does DNS use to find a mail service?

- A. Service (SRV) DNS record
- B. Canonical (CNAME) DNS record
- C. Mail Exchanger (MX) DNS record
- D. Host (A) DNS record

Answer: C

NEW QUESTION 149

Which wireless communication problem is caused by electromagnetic waves?

- A. Fading
- B. Attenuation
- C. Interference
- D. Diffraction

Answer: C

NEW QUESTION 153

Which two of the following are connectivity options for wide area networks (WANs)? (Choose two.)

- A. Token ring
- B. Ethernet
- C. Dial-up
- D. Leased line

Answer: CD

NEW QUESTION 158

.....

THANKS FOR TRYING THE DEMO OF OUR PRODUCT

Visit Our Site to Purchase the Full Set of Actual 98-366 Exam Questions With Answers.

We Also Provide Practice Exam Software That Simulates Real Exam Environment And Has Many Self-Assessment Features. Order the 98-366 Product From:

<https://www.2passeasy.com/dumps/98-366/>

Money Back Guarantee

98-366 Practice Exam Features:

- * 98-366 Questions and Answers Updated Frequently
- * 98-366 Practice Questions Verified by Expert Senior Certified Staff
- * 98-366 Most Realistic Questions that Guarantee you a Pass on Your FirstTry
- * 98-366 Practice Test Questions in Multiple Choice Formats and Updatesfor 1 Year