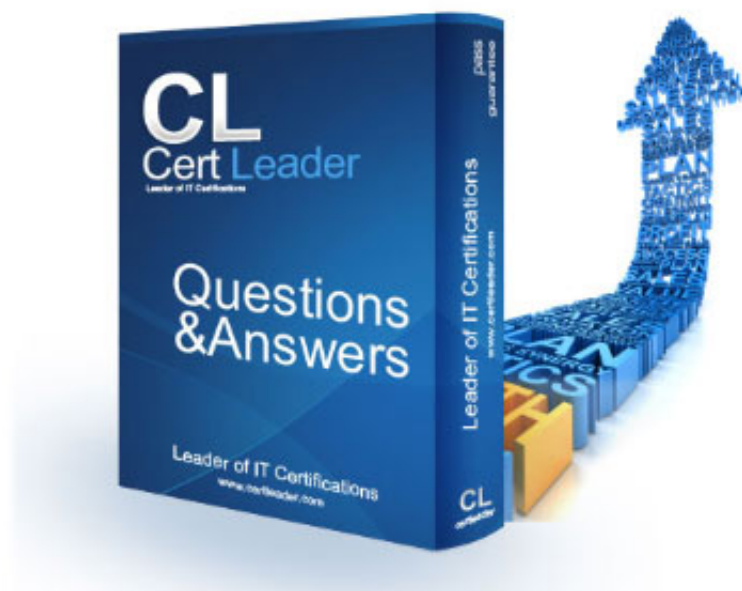


JN0-348 Dumps

Enterprise Routing and Switching - Specialist (JNCIS-ENT)

<https://www.certleader.com/JN0-348-dumps.html>



NEW QUESTION 1

Click the Exhibit button.

```
user@host# show
  firewall {
    family ethernet-switching {
      filter ingress-vlan-limit-guest {
        term guest-to-guest {
          from {
            destination-address 192.0.2.33/28;
          }
          then {
            accept;
          }
        }
        term no-guest-employee-no-peer-to-peer {
          from {
            destination-mac-address 00.05.5E.00.00.DF;
          }
          then {
            accept;
          }
        }
      }
    }
  }
  vlans {
    guest-vlan {
    }
  }
}
```

A recent security audit indicates that peer-to-peer applications are allowed on the guest VLAN and employees may have been using the guest VLAN for this purpose. You deploy the configuration shown in the exhibit, but it does not stop the peer-to-peer traffic. In this scenario, what must you do to implement the security policy?

- A. Implement 802.1X on the guest VLAN
- B. Attach the filter to the VLAN
- C. Deploy storm control to block unknown unicast traffic
- D. Use persistent MAC learning

Answer: B

NEW QUESTION 2

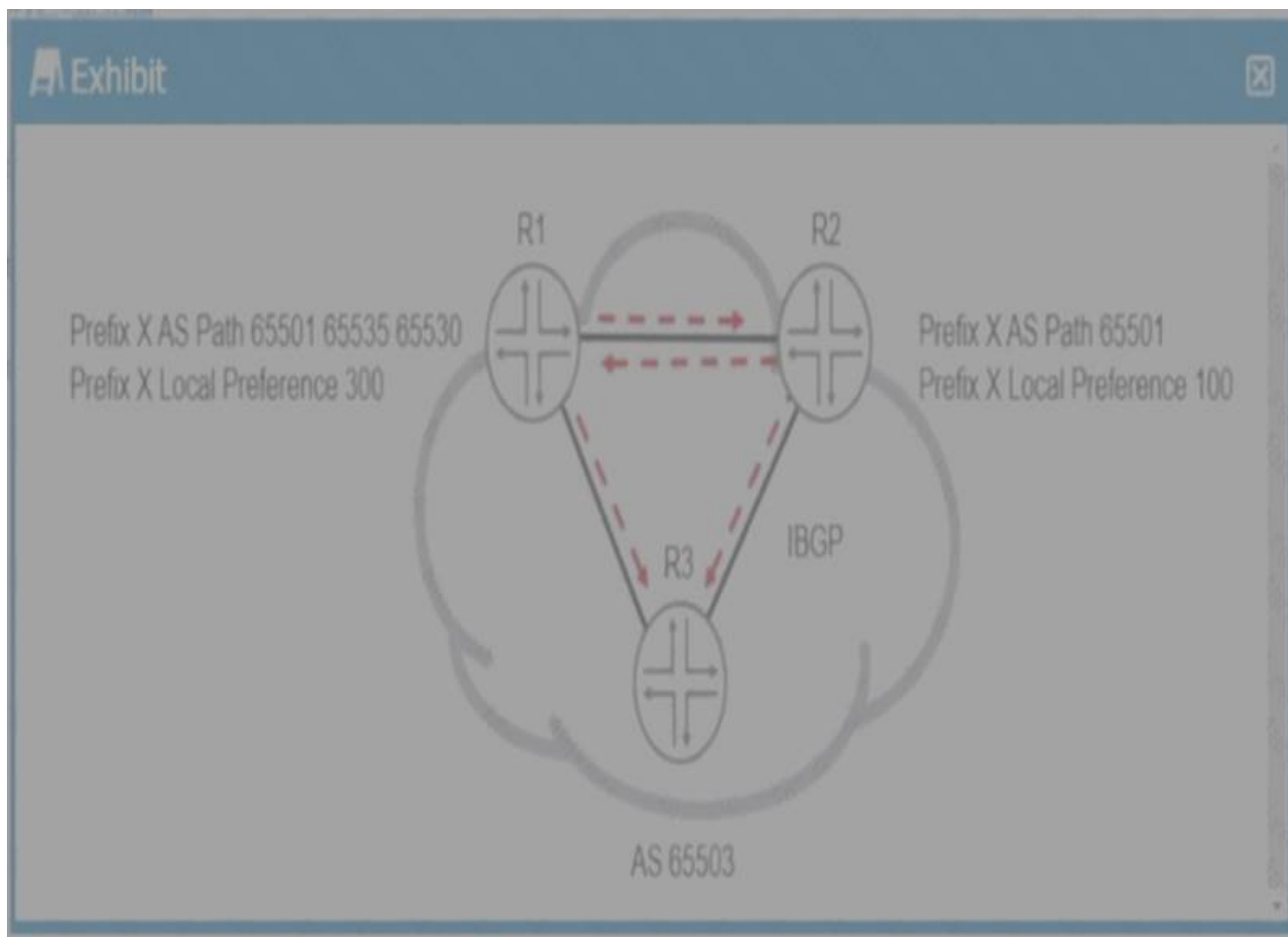
Exhibit. What is the problem?

- A. LAG requires more than two member links.
- B. Aggregated interface must be defined under the chassis stanza.
- C. The LAG member interfaces are configured across different line cards.
- D. LACP is required for LAG to work.

Answer: A

NEW QUESTION 3

Exhibit.



Both the R1 and R2 devices are advertising prefix X into AS 65530 with the BGP attribute shown in the exhibit. Which statement is correct in this scenario?

- A. R2's version of prefix X will be active because of the local preference attribute.
- B. R1's version of prefix X will be active because of the local preference attribute.
- C. R1's version of prefix X will be active because of the AS path attribute.
- D. R2's version of prefix X will be active because of the AS path attribute.

Answer: B

NEW QUESTION 4

How many bytes of overhead does an IP-IP tunnel add to a packet?

- A. 24 bytes
- B. 14 bytes
- C. 20 bytes
- D. 28 bytes

Answer: C

NEW QUESTION 5

Which statement is true when using LAGs with an EX4300?

- A. Speeds on member links can differ.
- B. Member links must be contiguous.
- C. Half duplex is supported on the LAG.
- D. You can have up to 16 member links per LAG.

Answer: D

NEW QUESTION 6

Which two statements are true about high availability on Junos devices? (Choose two.)

- A. BFD is faster at detecting failures than default GRE or OSPF timers.
- B. NSR is independent of helper routers to assist the routing platform in restoring routing protocol information.
- C. NSR is dependent on helper routers to assist the routing platform in restoring routing protocol information.
- D. BFD is slower at detecting failures than default GRE or OSPF timers.

Answer: AB

NEW QUESTION 7

You are enabling dynamic ARP inspection on an EX4300 switch Which service is enabled by default in this scenario?

- A. DHCP snooping
- B. persistent MAC learning
- C. MAC limiting
- D. IP Source Guard

Answer: A

NEW QUESTION 8

What are two characteristics of IS-IS CSNPs? (Choose two.)

- A. IS-IS CSNPs contains header information for all link-state PDUs.
- B. IS-IS CSNPs are used to request a copy of a missing link state PDU.
- C. IS-IS CSNPs are used to maintain the link-state database synchronization.
- D. IS-IS CSNPs contain header information for specific requested link-state PDUs.

Answer: AC

NEW QUESTION 9

Which statement is true about IP-IP tunnels?

- A. The time-to-live value of the original packet is decremented.
- B. IP-IP tunnels are protocol agnostic.
- C. The packet is encapsulated unchanged before entering the tunnel
- D. The packet header is replaced before entering the tunnel

Answer: C

NEW QUESTION 10

Which device is used to separate collision domains?

- A. Switch
- B. Router
- C. Hub
- D. firewall

Answer: A

NEW QUESTION 10

Exhibit.

```

Exhibit

user@host> show route hidden detail
inet.0: 25 destinations, 26 routes (24 active, 0 holddown, 1
hidden)
Restart Complete
127.0.0.1/32 (1 entry, 0 announced)
    Direct Preference: 0
        Next hop type: Interface
        Next-hop reference count: 1
        Next hop: via 100.0, selected
        State: <Hidden Martian Int>
        Local AS:      1
        Age: 4:27:37
        Task: IF
        AS path: I

private1__inet.0: 2 destinations, 3 routes (2 active, 0
holddown, 0 hidden)

red.inet.0: 6 destinations, 8 routes (4 active, 0 holddown, 3
hidden)
Restart Complete

10.5.5.5/32 (1 entry, 0 announced)
    BGP      Preference: 170/-101
        Route Distinguisher: 10.4.4.4:4
        Next hop type: Unusable
        Next-hop reference count: 6
        State: <Secondary Hidden Int Ext>

```

```

Local AS:      1 Peer AS:      1
Age: 3:45:09
Task: BGP_1.10.4.4.4+2493
AS path: 100 I
Communities: target:1:999
VPN Label: 100064
Localpref: 100
Router ID: 10.4.4.4
Primary Routing Table bgp.13vpn.0

```

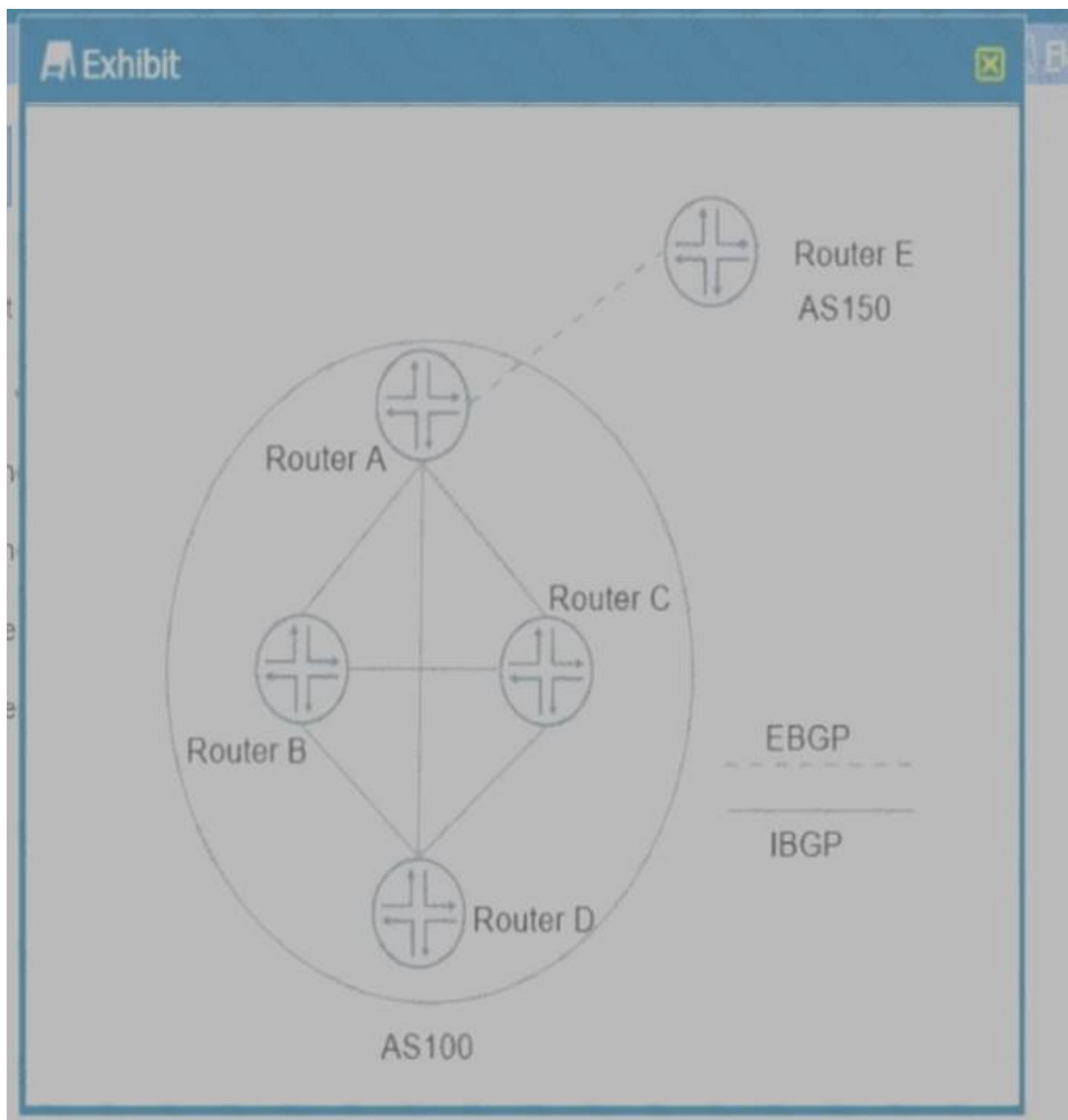
Referring to the exhibit, why is the route for 10.5.5.5 hidden?

- A. It is an L3VPN route.
- B. The next hop cannot be resolved.
- C. It has an invalid community.
- D. It is a Martian route.

Answer: B

NEW QUESTION 13

Exhibit.



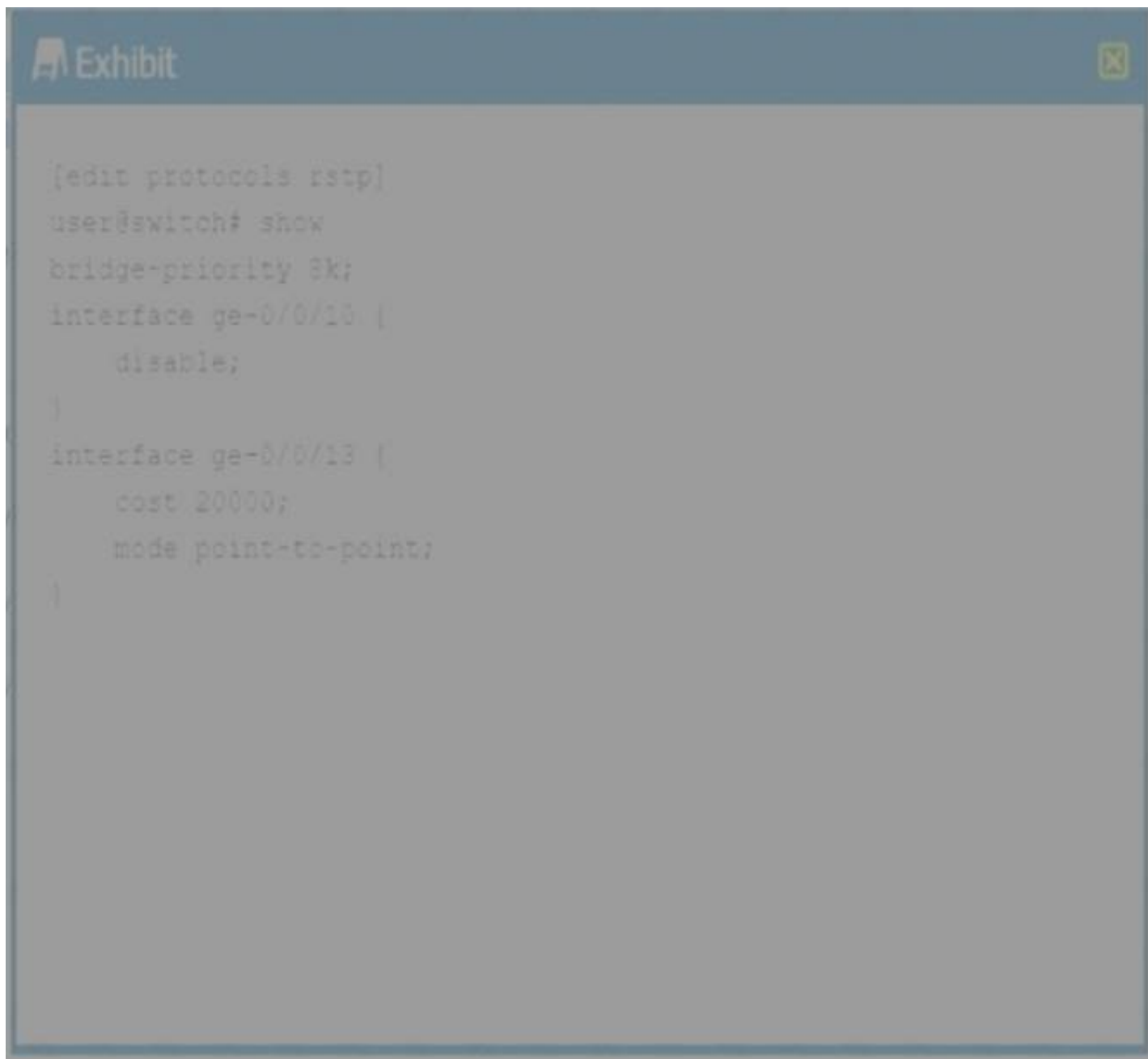
Which two statements are correct? (Choose two.)

- A. Router A sends routes learned from Router E to Router B, Router C, and Router D.
- B. Router A does not send routes learned from Router D to Router B and Router C.
- C. Router A sends routes learned from Router D to Router B and Router C.
- D. Router A does not send routes learned from Router E to Router B, Router C, and Router D.

Answer: AB

NEW QUESTION 15

Exhibit.



Which two statements are correct? (Choose two.)

- A. The ge-0/0/10 interface will not participate in the RSTP topology.
- B. This device must be selected as the root bridge.
- C. The ge-0/0/13 interface will be selected as the forwarding interface.
- D. The ge-0/0/10 interface will be part of the RSTP topology but will block incoming BPDUs.

Answer: AC

NEW QUESTION 16

What are the three possible port states when using RSTP? (Choose two.)

- A. Forwarding
- B. Learning
- C. Discarding
- D. Listening
- E. Tagging

Answer: ABC

NEW QUESTION 18

An EBGP session sources its TCP connection from which IP address?

- A. The IP address of the primary address assigned to the loopback interface.
- B. The IP address of the preferred address assigned to the loopback interface.
- C. The IP address of the interface that connects the two BGP speakers.
- D. The IP address assigned as the router ID.

Answer: C

NEW QUESTION 21

What are three well-known mandatory BGP attributes? (Choose three.)

- A. local preference
- B. community
- C. next hop
- D. AS path
- E. origin

Answer: CDE

NEW QUESTION 23

Which two characteristics are true for EBGp peerings? (Choose two.)

- A. EBGp peers must be directly connected.
- B. EBGp connects peer device in the same autonomous system.
- C. EBGp connect peer devices in two different autonomous systems.
- D. EBGp peers can be connected over a multihop connection.

Answer: CD

NEW QUESTION 26

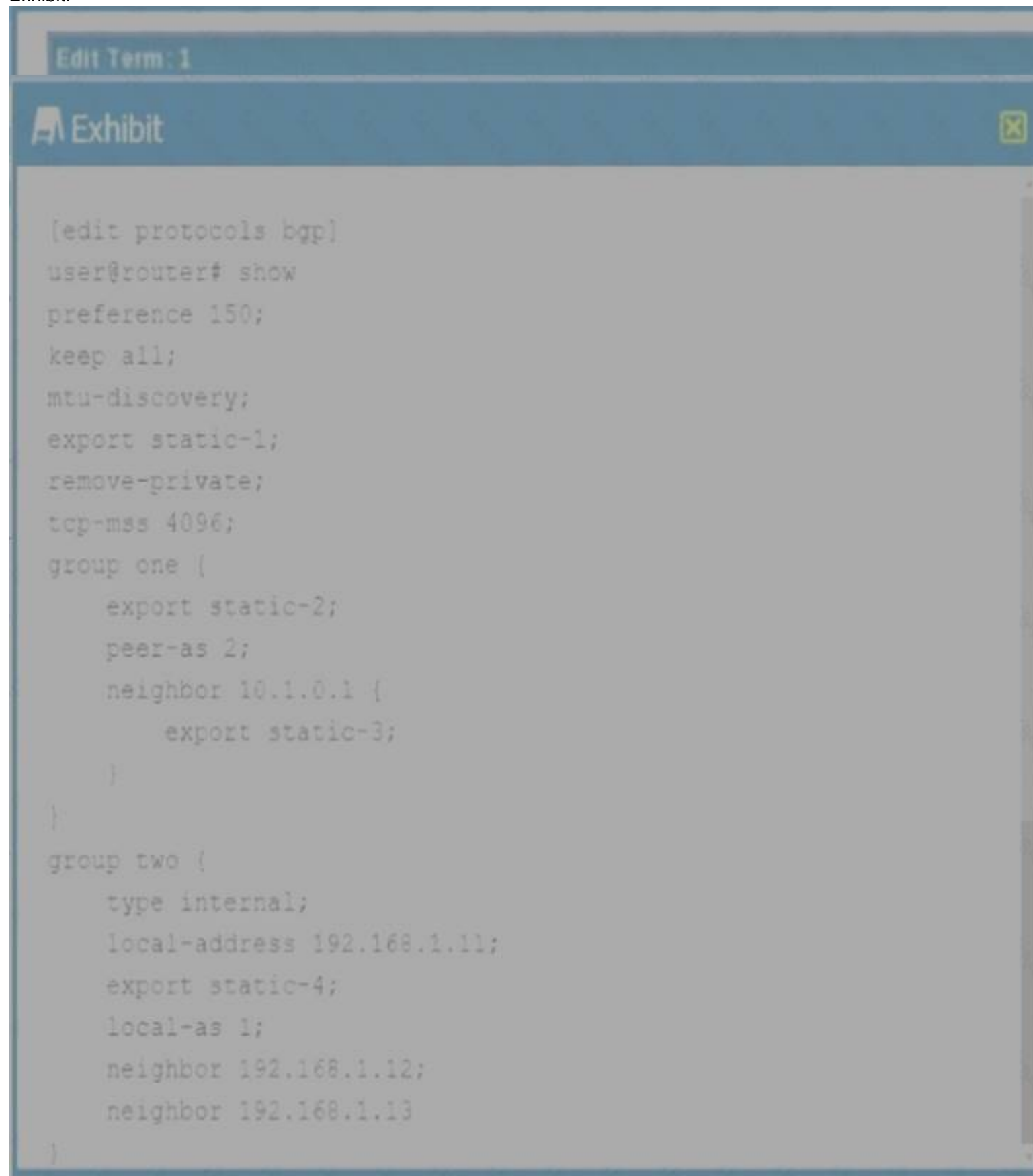
What are two interarea OSPF LSA types? (Choose two.)

- A. Type 1 router LSAs
- B. Type 2 network LSAs
- C. Type 3 summary LSAs
- D. Type 4 ASBR summary LSAs

Answer: CD

NEW QUESTION 28

Exhibit.



```
[edit protocols bgp]
user@router# show
preference 150;
keep all;
mtu-discovery;
export static-1;
remove-private;
tcp-mss 4096;
group one {
    export static-2;
    peer-as 2;
    neighbor 10.1.0.1 {
        export static-3;
    }
}
group two {
    type internal;
    local-address 192.168.1.11;
    export static-4;
    local-as 1;
    neighbor 192.168.1.12;
    neighbor 192.168.1.13
}
```

Referring to the exhibit, which policy will export routes to IBGP peers?

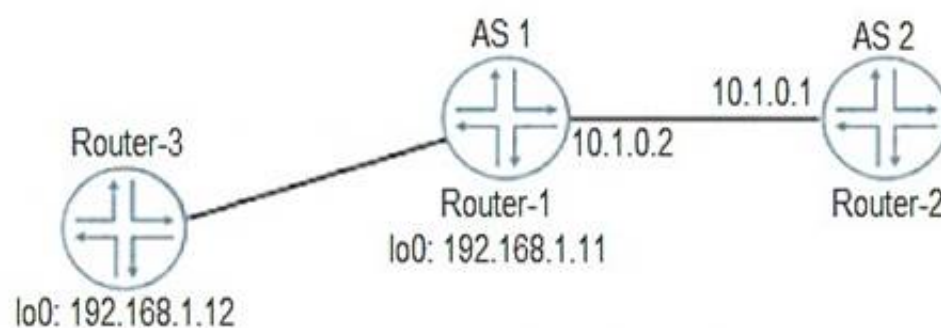
- A. static-4
- B. static-2
- C. static-1
- D. static.c-2

Answer: A

NEW QUESTION 31

Click the Exhibit button.

```
[edit protocols bgp]
user@Router-1# show
  preference 150;
  keep all;
  mtu-discovery;
  export statics;
  remove-private;
  local-as 5;
  tcp-mss 4096;
  group EXT {
    peer-as 2;
    neighbor 10.1.0.1;
  }
  group INT {
    type internal;
    local-address 192.168.1.11;
    local-as 1;
    neighbor 192.168.1.12;
  }
}
```



```
[edit protocols bgp]
user@Router-1# run show bgp summary
Groups: 2 Peers: 2 Down peers: 1
Table Tot Paths Act Paths Suppressed History Damp State Pending
inet.0 5 4 0 0 0
Peer AS InPkt OutPkt OutQ Flaps Lasr Up/Dwn State | #Active/Received/Accepted/Damped
10.1.0.1 2 1 2 0 0 3:37 Active
192.168.1.12 1 14 15 0 0 4:05 4/5/4/0 0/0/0/0
```

Referring to the exhibit, Router-1 is attempting to form an EBGP session with Router-2. However, BGP routes are never exchanged between Router-1 and Router-2.

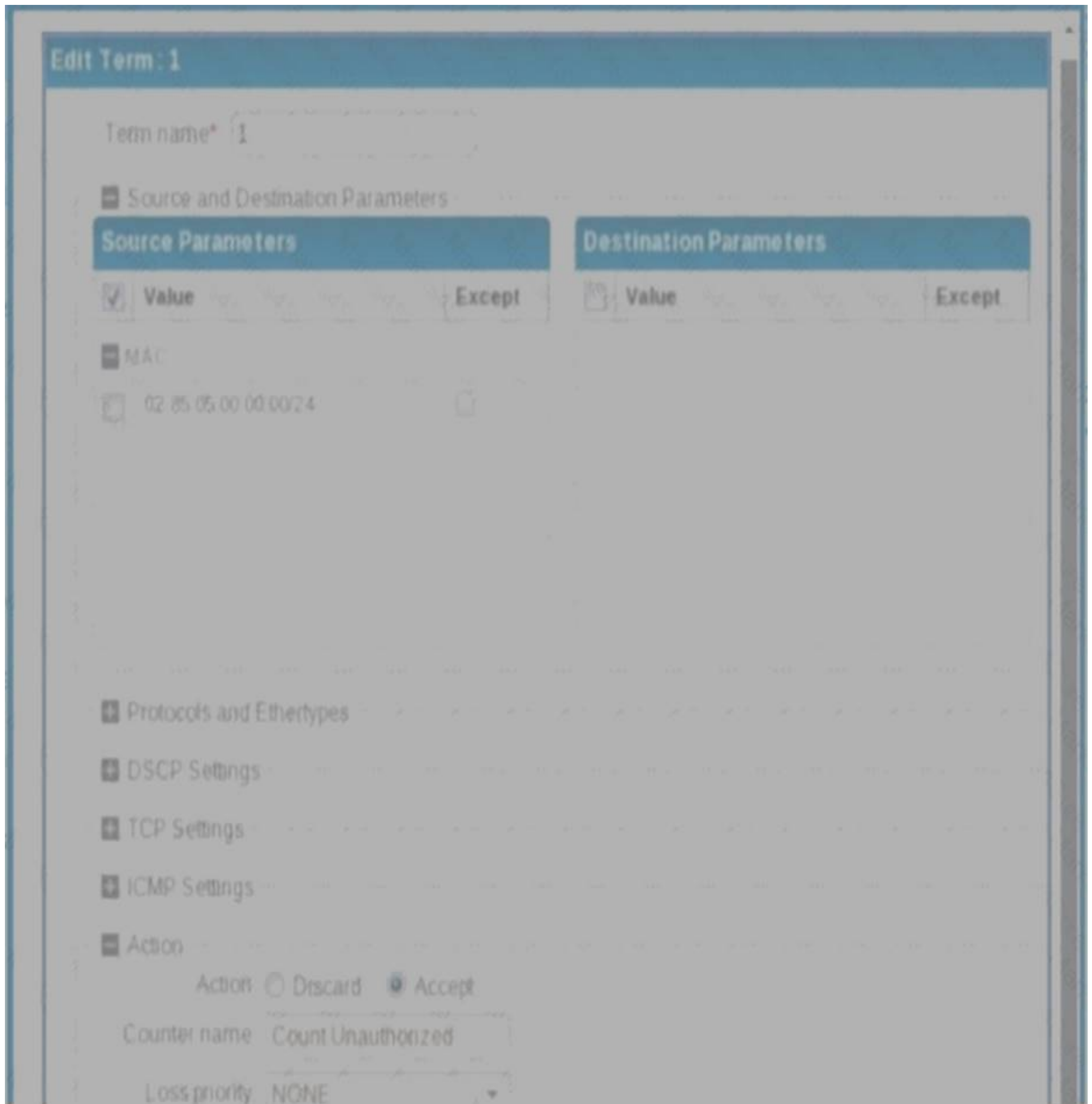
What is causing the problem?

- A. The TCP-MSS value is set too low
- B. The EXT group is not configured as an external type BGP peering session
- C. The EBGP session is configured to use the wrong AS
- D. The keep all statement is preventing the session from establishing

Answer: B

NEW QUESTION 33

Exhibit.



Your switches are managed using Junos Space Network Director. You want to secure the switches using a Network Director filter profile. A filter profile containing one term shown in the exhibit is deployed to ports on managed devices. Which traffic will be accepted by the filter?

- A. Traffic containing a destination MAC of 02:85:05:00:00:00/24 will be accepted.
- B. All traffic will be accepted.
- C. Traffic containing a source MAC of 02:85:05:00:00:00/24 will be accepted.
- D. No traffic will be accepted.

Answer: C

NEW QUESTION 37

Which OSPF packet type is sent when an OSPF router detects its database is state?

- A. Database description
- B. Hello
- C. Link-state acknowledgment
- D. Link-state request

Answer: D

NEW QUESTION 40

Which mechanism is used to share routes between routing tables?

- A. RIB groups
- B. routing instances
- C. forwarding instances
- D. filter-based forwarding

Answer: A

NEW QUESTION 45

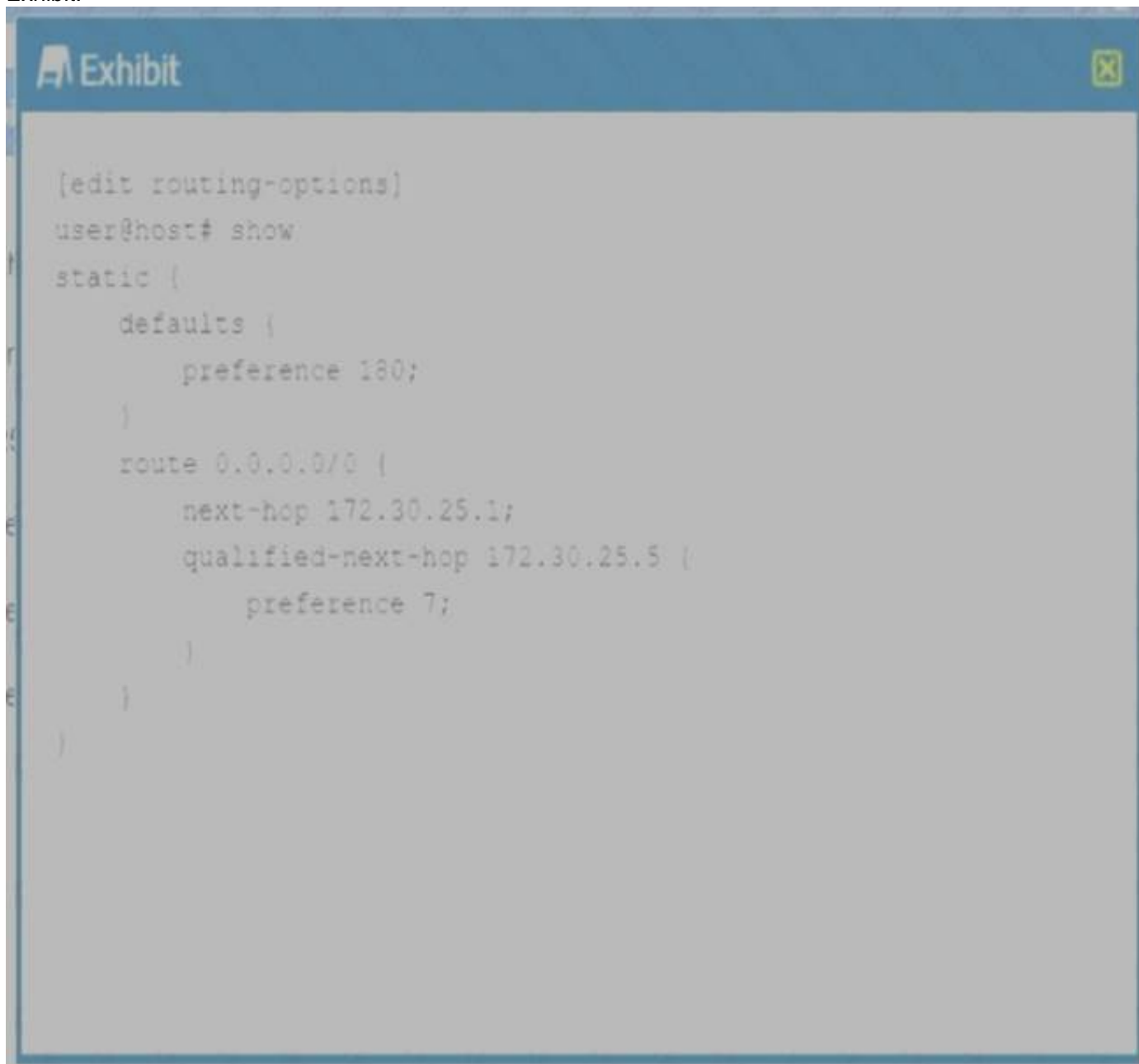
Which statement about configuring persistent MAC learning is correct?

- A. Persistent MAC learning can be configured on access mode interfaces.
- B. Persistent MAC learning flushes dynamically learned MAC addresses on reboots.
- C. Persistent MAC learning cannot be configured on redundant trunk groups.
- D. Persistent MAC learning requires 802.1 X authentication.

Answer: A

NEW QUESTION 47

Exhibit.



Which statement is true about the configuration shown in the exhibit?

- A. The preferred next hop is 172.30.25.5.
- B. The preference for the 172.30.25.5.1 next hop is 7.
- C. The preference for the 172.30.25.1 next hop is 5.
- D. 172.30.25.5.1 is the preference next hop.

Answer: A

NEW QUESTION 52

Which static route next-hop value indicates that the packet will be silently dropped?

- A. Resolve
- B. Discard
- C. Reject
- D. Next-table

Answer: B

NEW QUESTION 56

Exhibit.

****Exhibit is Missing****

Referring to the exhibit, all users connected to the same VLAN can communicate with each other, but not with users on other VLANs in this network.

What must be configured to enable communication between the VLANs?

- A. The switch ports to which the users are connected should be configured as trunk ports.
- B. A logical IRB interface must be created and assigned to each VLAN.
- C. A single logical IRB interface must be created and assigned to all three VLANs
- D. A separate routing device is required to forward traffic between the configured VLANs.

Answer: C

NEW QUESTION 61

Which protocol prevents loops and calculates the best path through a switched network that contains redundant paths?

- A. VRRP
- B. STP
- C. DHCP
- D. IS-IS

Answer: B

NEW QUESTION 66

Which statement is true about IP-IP tunnels?

- A. Intermediate devices must have a route to the destination address of the traffic being tunneled.
- B. Intermediate devices must have a route to both the tunnel source address and the tunnel destination address.
- C. Intermediate devices must have a route to the tunnel destination address but do not require a route to the tunnel source address.
- D. Intermediate devices must have a route to the tunnel source address but do not require a route to the tunnel destination address

Answer: B

NEW QUESTION 67

In which two STP states is a port active and a MAC address learned? (Choose two.)

- A. Blocking
- B. Forwarding
- C. Disabled
- D. Learning

Answer: BD

NEW QUESTION 69

When configuring firewall filters, which function does the interface-specific parameter enable on an EX Series switch?

- A. The interface-specific parameter is required to configure port-specific counters.
- B. The interface-specific parameter is required to configure VLAN-specific counters.
- C. The interface-specific parameter is required to configured VLAN-based filters.
- D. The interface-specific parameter is required to configured port-based firewall filters.

Answer: A

NEW QUESTION 70

Click the Exhibit button.

[edit]

```
user@router# run show route protocol aggregate
```

```
inet.0: 9 destinations, 10 routes (9 active, 0 holddown, 0 hidden)
```

```
+ = Active Route, - = Last Active, * = Both
```

```
172.12.16.0/20          *[Aggregate/130] 00:00:32
```

```
Discard
```

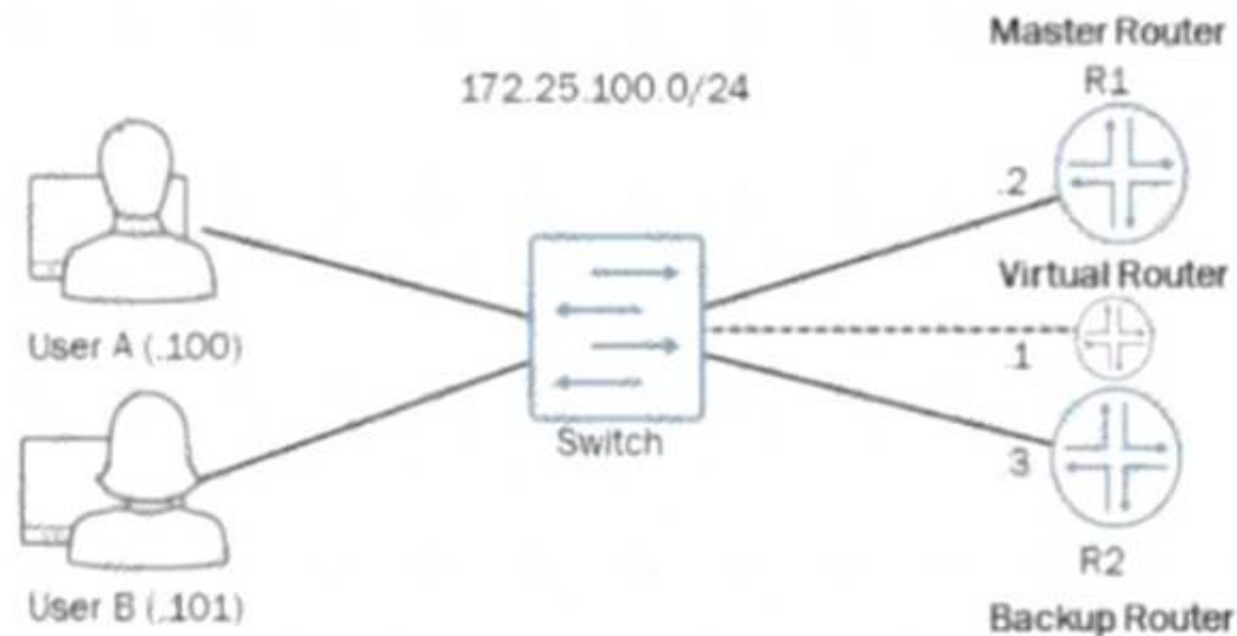
Given the route shown in the exhibit, which two prefixes contribute to the aggregate route? (Choose two.)

- A. 172.12.31.0/24
- B. 172.12.33.0/24
- C. 172.12.30.0/24
- D. 172.12.32.0/24

Answer: AC

NEW QUESTION 71

Exhibit.



```
user@R1# show interface ge-0/0/0.0
family inet (
  address 172.25.100.2/24 (
    vrrp-group 10 (
      virtual-address
172.25.100.1;
      accept-data;
      priority 200;
    )
  )
)
```

```
user@R2# show interface ge-0/0/0.0
family inet (
  address 172.25.100.3/24 (
    vrrp-group 20 (
      virtual-address
172.25.100.1;
      accept-data;
      priority 300;
    )
  )
)
```

You are attempting to set up VRRP with R1 and R2 being participating members. You want R1 to be the master router and R2 to be the backup router with the virtual router they create being at address 172.25.100.1. The virtual router is not pinging from either User A or User B. Referring to the exhibit, what must be done to correct the problem?

- A. The VRRP group value on R1 and R2 must match.
- B. A VRRP authentication type value is needed on R1 and R2.
- C. A VRRP policy is needed on R1 and R2.
- D. The VRRP priority value on R1 and R2 must match

Answer: A

NEW QUESTION 72

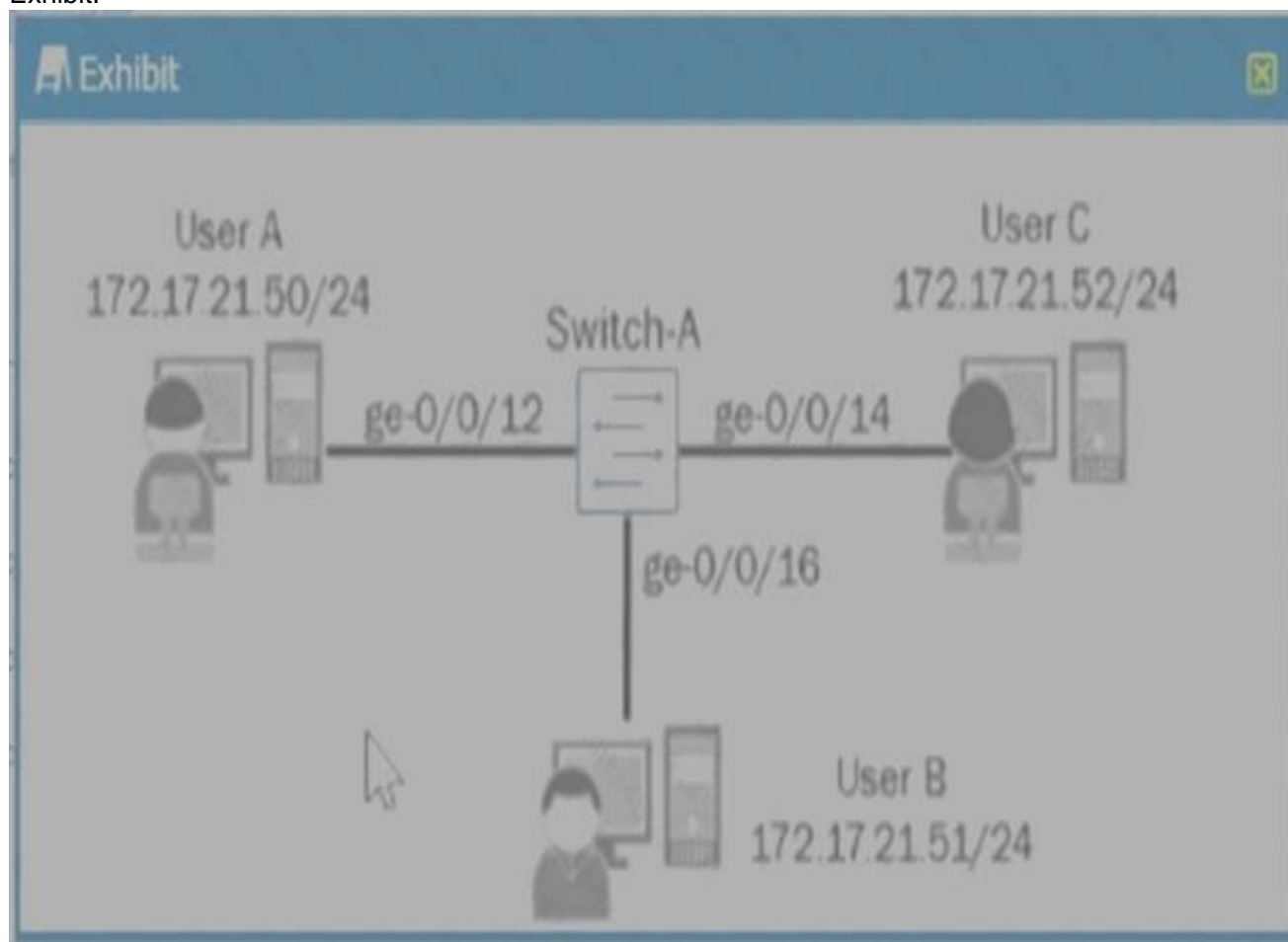
What is the default BGP group type on a Junos device?

- A. Internal
- B. External
- C. Multihop
- D. null

Answer: B

NEW QUESTION 77

Exhibit.



In the exhibit, each IP subnet in the network is associated with a unique VLAN ID Which action wilt ensure that Host C will communicate with host A and Host B?

- A. Configure an IRB interface for each VLAN and associate it with its corresponding VLAN
- B. Configure all switch ports connecting to the host devices as access ports associated with a common VLAN.
- C. Configure a port-based ACL that permits inter-VLAN routing for all configured VLANs.
- D. Configure all switch ports connecting to the host devices as trunk ports associated with all VLANs.

Answer: B**NEW QUESTION 82**

Which three mechanisms are associated with the bridging process? (Choose three.)

- A. blocking
- B. flooding
- C. aging
- D. filtering
- E. listening

Answer: BCD**NEW QUESTION 84**

Which statement is true about Layer 2 firewall filters on EX Series switches?

- A. They are stateless and evaluated by the control plane.
- B. They are stateless and evaluated by the forwarding plane.
- C. They are stateful and evaluated by the forwarding plane.
- D. They are stateful and evaluated by the control plane.

Answer: C**NEW QUESTION 86**

Exhibit.

Exhibit



```
[edit protocols isis]
user@router# show
traceoptions {
    file isis-ts.log;
    flag all detail;
}
level 2 disable;
level 1 wide-metrics-only;
interface all;

[edit protocols isis]
user@router# top show interfaces lo0
unit 0 {
    family inet {
        address 10.10.100.1/32;
    }
    family iso {
        address 49.0001.0010.0100.0001.00;
    }
}

[edit protocols isis]
user@router# run show log isis-ts.log
Mar  5 18:05:43.986944 Received L1 LAN IIH, source id vr-
device-P-1 on ge-0/0/0.0
Mar  5 18:05:43.986963      intf index 332, snpa
52:54:0:8c:b1:1a
Mar  5 18:05:43.986967      max area 0, circuit type 11,
packet length 48
Mar  5 18:05:43.986971      hold time 27, priority 64, circuit
id vr-device-P-1 on ge-0/0/0.0
Mar  5 18:05:43.986975      speaks IP
Mar  5 18:05:43.986978      speaks IPV6
Mar  5 18:05:43.986987      IP address 172.16.1.1
Mar  5 18:05:43.986995      area address 49.0002 (3 bytes)
Mar  5 18:05:43.986998      restart flags []
Mar  5 18:05:43.987003 ERROR: IIH from vr-device-P-1 with no
matching areas, interface ge-0/0/0.0
Mar  5 18:05:43.987006      local area 49.0001
Mar  5 18:05:43.987009      area address 49.0002 (3 bytes)
Mar  5 18:05:51.618675      restart flags []
Mar  5 18:05:59.597983 ISIS L1 periodic xmit to
01:80:c2:00:00:14 interface ge-0/0/0.0
```


Referring to the exhibit, the local router should have an IS-IS adjacency with a neighboring router, but the adjacency never establishes correctly. What should you do to solve the problem?

- A. Disable wide metrics.
- B. Change the local IS-IS area ID to 49.0002.
- C. Disable level 1 for the interfaces.
- D. Disable level 2 for the interfaces.

Answer: B

NEW QUESTION 89

What are two characteristics of OSPF ABRs? (Choose two.)

- A. ABRs transmit routing information between the backbone and other areas.
- B. ABRs cannot be part of the backbone and another area at the same time.
- C. ABRs inject information from outside the OSPF domain.
- D. ABRs link two OSPF areas

Answer: AD

NEW QUESTION 93

Which two statements describe BGP attributes? (Choose two.)

- A. BGP attributes help determine the best path to a destination.
- B. The origin attribute indicates the autonomous systems through which the route has traversed.
- C. BGP attributes are always optional.
- D. The AS path attribute indicates the autonomous systems through which the route has traversed.

Answer: AD

NEW QUESTION 98

Which two statements describe NSR? (Choose two)

- A. NSR provides high availability with multiple Routing Engines.
- B. NSR rapidly detects link failures.
- C. NSR provides routing loop protection.
- D. NSR requires GRES to function properly.

Answer: AD

NEW QUESTION 99

Which area is reserved for the OSPF backbone?

- A. Area 0.0.0.0
- B. Area 1.1.1.1
- C. Area 2.2.2.2
- D. Area .3.3.3.3

Answer: A

NEW QUESTION 104

.....

Thank You for Trying Our Product

* 100% Pass or Money Back

All our products come with a 90-day Money Back Guarantee.

* One year free update

You can enjoy free update one year. 24x7 online support.

* Trusted by Millions

We currently serve more than 30,000,000 customers.

* Shop Securely

All transactions are protected by VeriSign!

100% Pass Your JN0-348 Exam with Our Prep Materials Via below:

<https://www.certleader.com/JN0-348-dumps.html>