

352-001 Dumps

CCDE Written Exam

<https://www.certleader.com/352-001-dumps.html>



NEW QUESTION 1

The cloud service provider CSP is planning to launch five data centers in Egypt, United Arab Emirates, Saudi Arabia, Qatar and Turkey. CSP is looking for VLAN extension and DCIs between these five data centers to allow for software replication, where original and backup VMs must be on the same subnet. Which tunneling technology must they use?

- A. VPLS
- B. IPsec VPN
- C. VPWS
- D. L2TPv3

Answer: A

NEW QUESTION 2

Which load balancing option for IP-only traffic is the least efficient in terms of EtherChannel physical links utilization?

- A. On a per source IP address basis
- B. On a per destination MAC address basis
- C. On a per destination IP address basis
- D. On a per port number basis

Answer: B

NEW QUESTION 3

ACME Corporation is integrating IPv6 into their network, which relies heavily on multicast distribution of data. Which two IPv6 integration technologies support IPv6 multicast? (Choose two.)

- A. 6VPE
- B. 6PE
- C. dual stack
- D. ISATAP
- E. 6to4
- F. IPv6INIP

Answer: CE

NEW QUESTION 4

What is an implication of using route reflectors in an iBGP topology?

- A. Route reflection limits the total number of iBGP routers.
- B. Route reflection causes traffic to flow in a hub-and-spoke fashion.
- C. The manipulation of BGP attributes is not supported on the other routers than the route reflectors.
- D. Route reflectors can create routing loops when more than one router reflector is used in the same cluster.
- E. Multipath information is difficult to propagate in a route reflector topology.

Answer: E

NEW QUESTION 5

DRAG DROP

Drag and drop the design characteristics of GET VPN from the left to the right. Not all options are used.

The interface shows four design characteristics on the left and three targets on the right:

- Design Characteristics (Left):**
 - It simplifies encryption key management while supporting routing, QoS, and multicast.
 - It provides encryption, but not authentication.
 - It supports native multicast across MPLS and private IP networks.
 - It offers scalable, full meshing for IPsec VPNs.
- Targets (Right):**
 - Target 1
 - Target 2
 - Target 3

- A. Mastered
- B. Not Mastered

Answer: A

Explanation:

A, C, D

NEW QUESTION 6

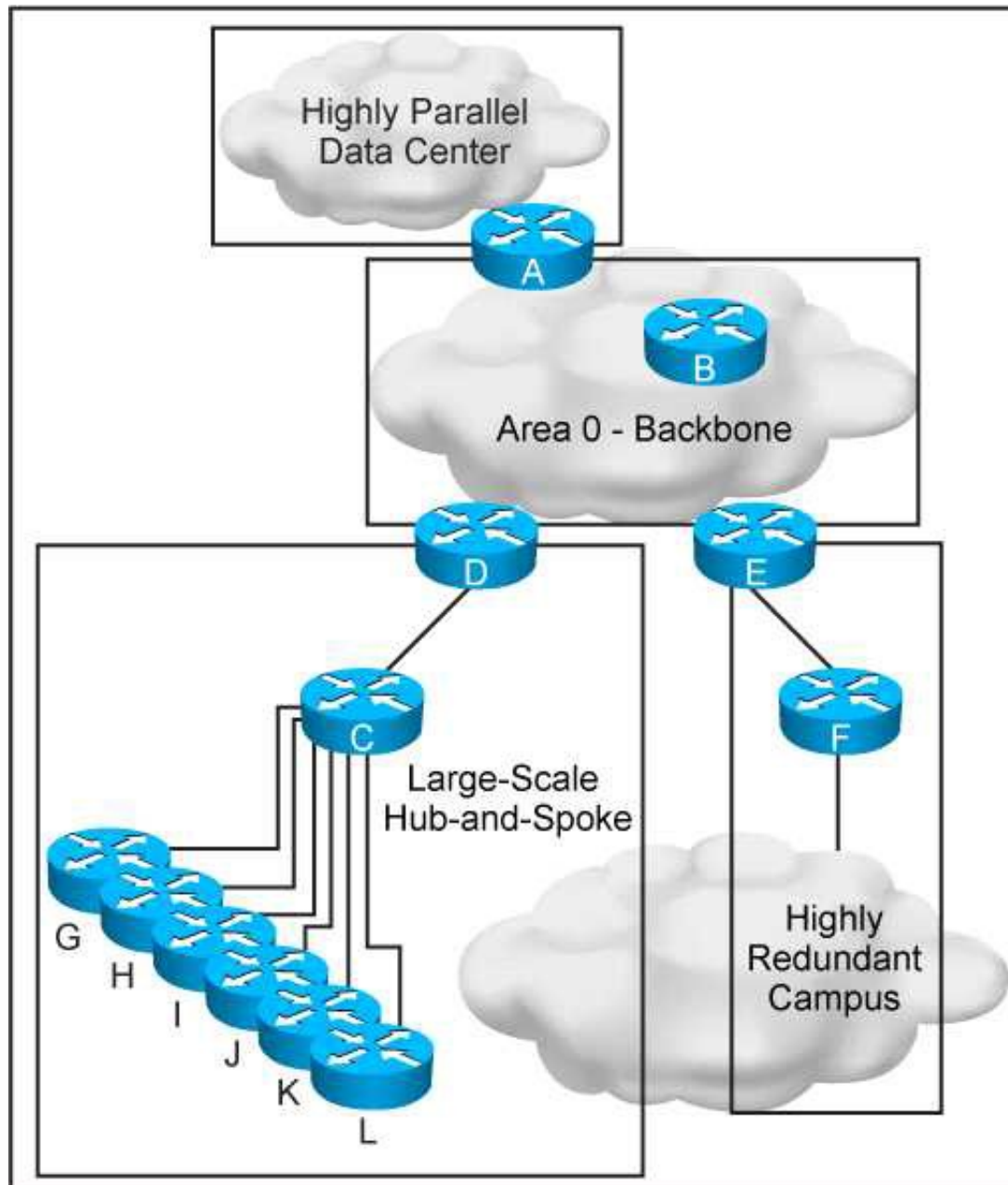
Which major block is not included in the ETSI network Function Virtualization reference framework?

- A. Network Function Virtualization Infrastructure
- B. Network Function Virtualization Management and Orchestration
- C. Network Function Virtualization Policy Manager
- D. Virtualized Network Function/ Element Management Systems

Answer: C

NEW QUESTION 7

Refer to the exhibit.



This new OSPF network has four areas, but the hub-and-spoke area experiences frequent flapping. In order to fix this design failure, which two mechanisms can you use to isolate the data center area from the hub-and-spoke area without losing Ip connectivity? (Choose two)

- A. Use OSPF distribute-list filtering on router A
- B. Deploy a prefix summarization on router D
- C. Make the data center area a NSSA
- D. Make the data center area totally stub
- E. Convert the data center area to EIGRP protocol

Answer: BD

NEW QUESTION 8

Which feature or technology that affects the operations of IPsec should be taken into account when designing an IPsec network using Authentication header?

- A. TCP MSS adjustment
- B. Certificate-based authentication
- C. Transform set
- D. NAT

Answer: D

NEW QUESTION 9

Which statement about TAP and TUN devices, which are used in a Linux/KVM cloud deployment model, is true?

- A. TUN is for handling IP packets, but TAP is for handling Ethernet frames
- B. TUN is for handling Ethernet frames, but TAP is for handling IP packets
- C. TUN is for tunneling IP packets, but TAP is for tapping IP packets

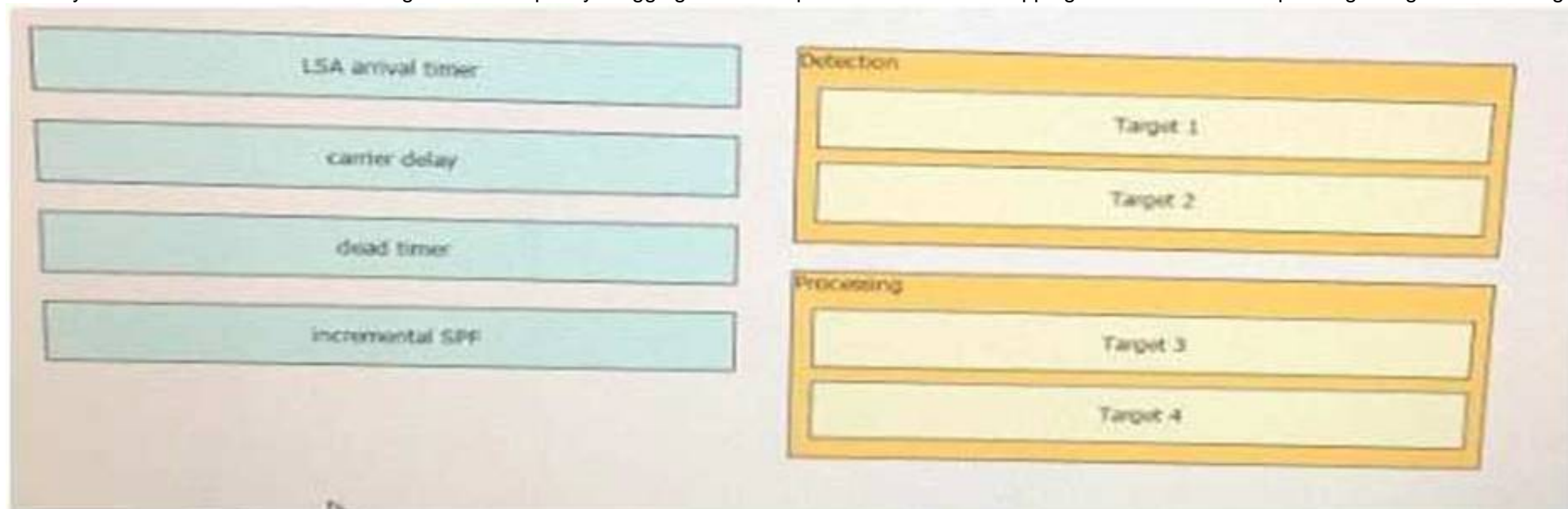
D. TUN is for tunneling Ethernet frames, but TAP is for tapping Ethernet frames

Answer: A

NEW QUESTION 10

DRAG DROP

Classify the OSPF Fast Network Convergence technique by dragging the techniques on the left and dropping them into the corresponding categories on the right.



- A. Mastered
- B. Not Mastered

Answer: A

Explanation:

Detection: carrier delay, dead timer

Processing: LSA arrival timer, incremental SPF

NEW QUESTION 10

Which option is a design consideration when using routers in a distributed hardware architecture?

- A. Routing information is stored in the RIB and the FIB makes forwarding decisions as programmed on the line card hardware
- B. After a link failure occurs in the core, the RIB continues to forward the traffic while FIB convergence is in progress
- C. BGP routes are stored in the RIB and IGP routes are stored in the FIB
- D. IP routes are stored in the RIB and MPLS labels are stored in the FIB

Answer: A

NEW QUESTION 11

There is an MPLS-enabled link constantly flapping on an MPLS VPN network. Given that the network runs OSPF as the IGP protocol, which design mechanism will stabilize the network and avoid constant re-convergence?

- A. IP Event Dampening
- B. OSPF fast hellos
- C. IP SLA
- D. Partial SPF

Answer: A

NEW QUESTION 15

A very large enterprise customer is migrating from EIGRP to IS-IS. What is your main concern in regards to change in the path packets take after the migration is complete?

- A. The areas sizes.
- B. The number of prefixes
- C. The redistribution points.
- D. The bandwidth and metrics of the links.

Answer: D

NEW QUESTION 19

A large enterprise network running IS-IS wants to deploy IGP traffic engineering, but they are concerned that the IS-IS default metrics are not flexible enough. Which feature must be enabled to provide traffic engineering with the minimum amount of changes?

- A. IS-IS Narrow Metrics
- B. IS-IS DIS
- C. IS-IS Wide Metrics
- D. IS-IS Multitopology

Answer: C

NEW QUESTION 21

A Company has these requirements for access to their wireless and wired corporate LANs using 802.1x Clients devices that corporate assets and have joined the active directory domain are allowed access Personal devices must be not allowed access Clients and access servers must be mutually authenticated. Which solution meets these requirements?

- A. Protected EAP/Microsoft CHAP v2 with user authentication
- B. EAP-TLS with machine authentication
- C. EAP-TLS with user authentication
- D. Protected EAP/Microsoft CHAP v2 with Machine authentication

Answer: B

NEW QUESTION 25

In an OSPF network, users in a particular OSPF non-backbone area are complaining about slow access speeds to a shared corporate resource in another OSPF area. Traceroutes show that the users are taking a suboptimal default route to the destinations. Which solution will improve access speed?

- A. Make the area totally stubby so that the default can be followed along the best path
- B. Create a virtual link between the areas so that traffic can shortcut directly between them
- C. Leak specific summaries on the ABRs for the remote subnets in addition to the default
- D. Implement policy routing to channel the traffic in the optimal direction

Answer: C

NEW QUESTION 28

You are designing a data center migration from one location to another, which requires all existing VLANs spanned to the new data center to maintain host IP addressing. Two temporary Gigabit Ethernet circuits are available to extend the VLANs at Layer 2 to the location as trunk links between core switches in each location. Which solution provides maximum fault isolation between the two data centers to ensure a Layer Issue in one data center does not affect the other during the migration?

- A. Perform BPDU filtering over the trunk links
- B. Enable STP PortFast on host ports within each data center
- C. Run the dual links as multichassis Etherchannel trunk between core switches within each location
- D. Perform HSRP filtering over the trunk links to maintain active HSRP gateways within each data center for each VLAN

Answer: A

NEW QUESTION 29

A BGP route reflector in the network is taking longer than expected to converge during network changes. Troubleshooting has shown that the router cannot handle all the TCP acknowledgements during route updates. Which action can be performed to tune device performance?

- A. Increase the size of the large buffers
- B. Decrease the size of the small buffers
- C. Increase the keepalive timers for each BGP neighbor
- D. Increase the size of the hold queue

Answer: D

NEW QUESTION 33

Which two general SDN characteristics? (Choose two)

- A. Southbound interfaces are interfaces used between the control plane and the data plane
- B. OpenFlow is considered one of the first Northbound APIs used by SDN controllers
- C. Northbound interfaces are open interfaces used between the control plane and the data plane
- D. The separation of the control plane from the data plane
- E. OVSDB is an application database management protocol

Answer: AD

NEW QUESTION 38

An network is designed to use OSPF to reach eBGP peers. Which condition should be avoided in the design to potentially prevent the eBGP peers do not flap continuously in case of link failure?

- A. Disable BGP synchronization.
- B. Advertise IP addresses used on eBGP peer statement via a non-backbone OSPF area.
- C. Advertise via eBGP IP addresses used on eBGP peer statements.
- D. Use an ACL to block BGP in one direction.

Answer: C

NEW QUESTION 43

You work as a network designer for a company that is replacing their Frame Relay WAN with an MPLS

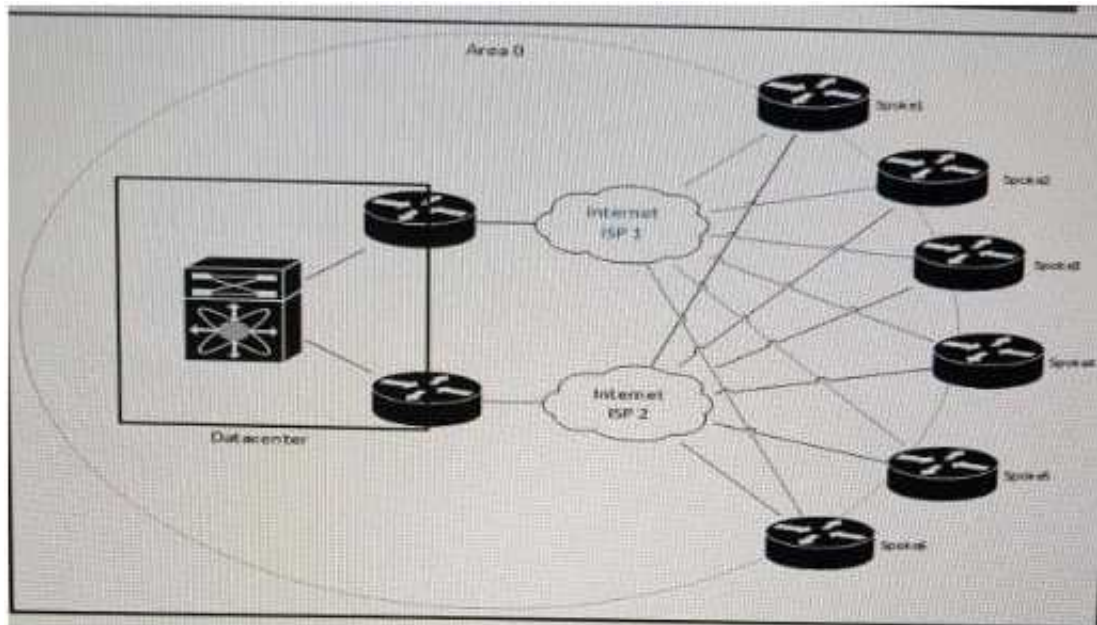
VPN service, where the PE-to-CE routing protocol is BGP. The company has 3000 routes in their distribution routers, and they would like to advertise their access routers through the MPLS network. Their service provider, however, only supports 1000 prefixes per VRF. Which two design solutions can be applied to ensure that your access routers will be able to reach all devices in your network? (Choose two.)

- A. Configure the distribution routers to send a default route to the MPLS network
- B. Configure null routes and aggregate routes for the prefixes in your network on the distribution routers
- C. Summarize the routes on MPLS WAN interfaces of the distribution routers
- D. Use prefix lists on the distribution routers to control which routes are sent to MPLS network
- E. Configure the access routers to send a default route to the MPLS network

Answer: AC

NEW QUESTION 44

Refer to the exhibit.



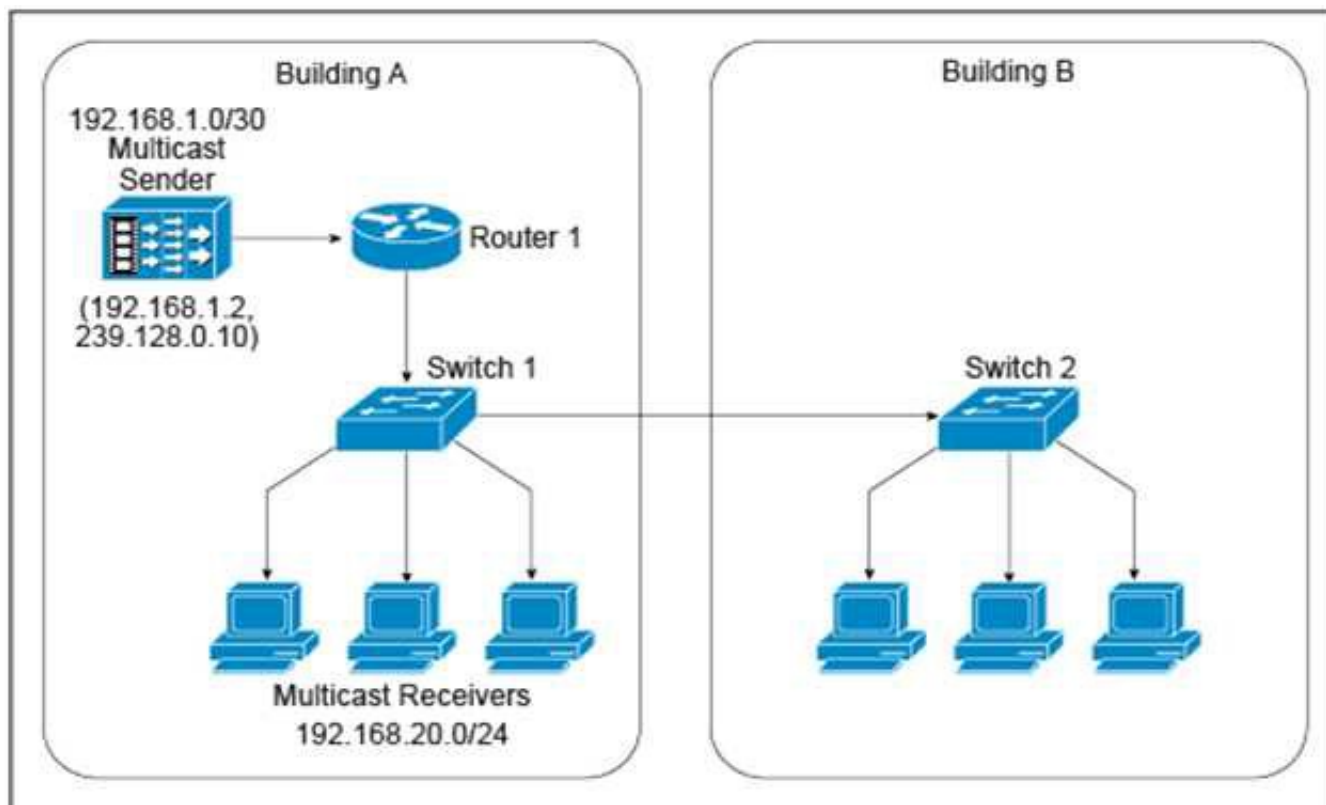
You must review this single OSPF area, DMVPN network because the company has noticed a few area 0 convergence and stability issues. Also, traffic destined to the data center from one of the spokes as the next hop on the path. The company prefers that all traffic destined to the data center uses the least amount of hops. Which solution resolves these issues with the minimum amount of changes on the network?

- A. Migrate from OSPF to static routes between the hub routers and the spoke routers and deploy IP SLA for route health checks
- B. Migrate from OSPF to EIGRP between the hub routers and the spoke routers
- C. Modify OSPF cost metrics on all backup links
- D. Create areas between each hub and their spoke routers, to ensure that the hub routers become DRs

Answer: C

NEW QUESTION 45

Refer to the exhibit.



A new IPv4 multicast-based video-streaming service is being provisioned. During the design- validation tests, you realize that the link between the two buildings is carrying multicast traffic even when there are no receivers connected to the switch in Building B and despite IGMP snooping being enabled on both Layer 2 switches and IGMPv2 runs on the hosts. Which design change will prevent the multicast traffic from being unnecessarily flooded throughout the campus network?

- A. Enable PIM snooping on both Layer 2 switches.
- B. Enable multicast storm control on the link between Switch 1 and Switch 2.
- C. Use static Layer 2 MAC forwarding entries on Switch 1.
- D. Change the IPv4 multicast group address such that it excludes the usage of link-local MAC addresses.
- E. Ensure that Switch 1 is an IGMP querier.

Answer: D

NEW QUESTION 50

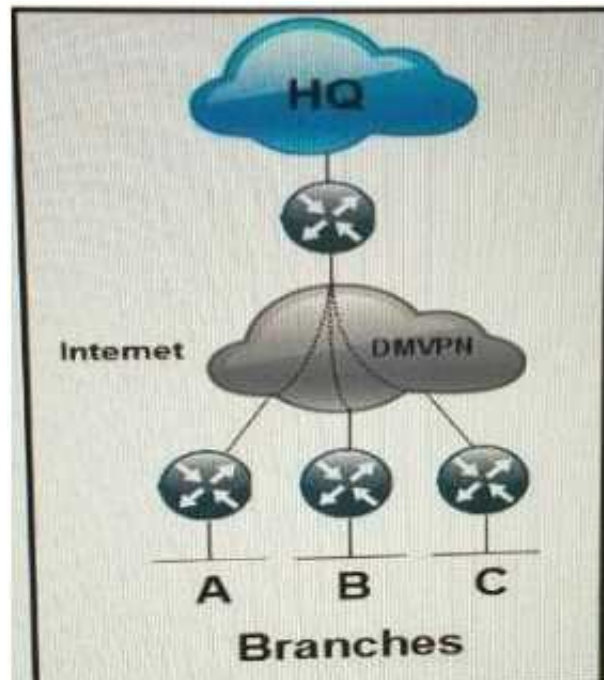
A service provider is designing a new backbone based on an IGP and MPLS what are two valid reasons for implementing MPLS-TE as well? (Choose two)

- A. MPLS-TE is required to reroute traffic within less than 1 second in case of a link failure inside the backbone
- B. MPLS-TE can detect and react to neighbor failures faster than IGP's can
- C. MPLS-TE is required to route different MPLS QoS Service classes through different paths
- D. MPLS-TE is required to create backup paths independently from the IGP
- E. MPLS-TE is a prerequisite for implementing RSVP in the backbone

Answer: CD

NEW QUESTION 52

Refer to the exhibit.



Which routing solution is the most scalable to connect the branches to the HQ and to connect the branches together over the internet using DMVPN?

- A. EIGRP
- B. EIGRP with the branch routers setup as stubs
- C. OSPF with each branch router as an ABR
- D. IS-IS L2 in all locations
- E. OSPF Area 0 in all locations

Answer: B

NEW QUESTION 54

Which two options are Loop-Free Alternate design considerations? (Choose two)

- A. MPLS TE must be enabled because it is used for building the backup paths
- B. Backup coverage and effectiveness is dependent on the network topology
- C. It can simplify the capacity planning by matching the backup path with the post-convergence path
- D. It provides an optional backup path by avoiding low bandwidth and edge links
- E. It can impact SLA-sensitive appliance by routing traffic to low bandwidth links while IGP convergence is in progress

Answer: BE

NEW QUESTION 58

An enterprise customer A with provider-independent address space is dual-homed to two ISP. Which two options, when combined, allow for customer A to efficiently achieve out-bound traffic load-balancing? (Choose two)

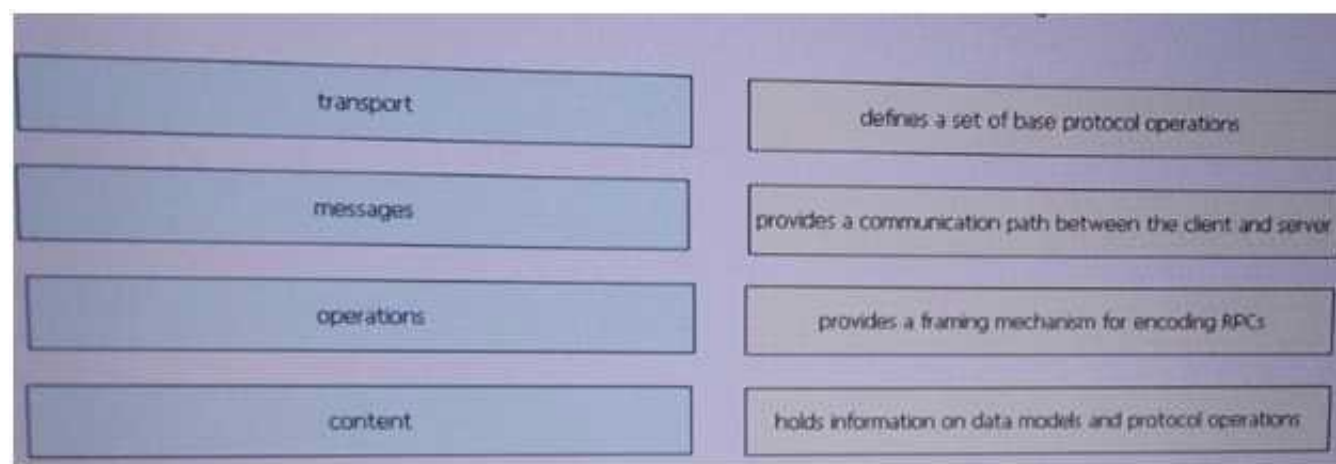
- A. Advertise Customer A subnets with a shorter AS path prepend to one of the ISPs than to the other
- B. Advertise Customer A subnets with different MED values to the two ISPs
- C. Accept a default route from both ISPs
- D. Make the CE connected to both ISPs route reflector
- E. Accept the routes originated on both ISPs and their direct peers

Answer: CE

NEW QUESTION 59

DRAG DROP

Drag and drop the NETCONF layers on the left onto their appropriate description on the left.



- A. Mastered
- B. Not Mastered

Answer: A

Explanation:



NEW QUESTION 62

As a part of a network design, you should tighten security to prevent man-in-the-middle. Which two security options ensure that authorized ARP responses take place according to know IP-to-MAC address mapping? (Choose two)

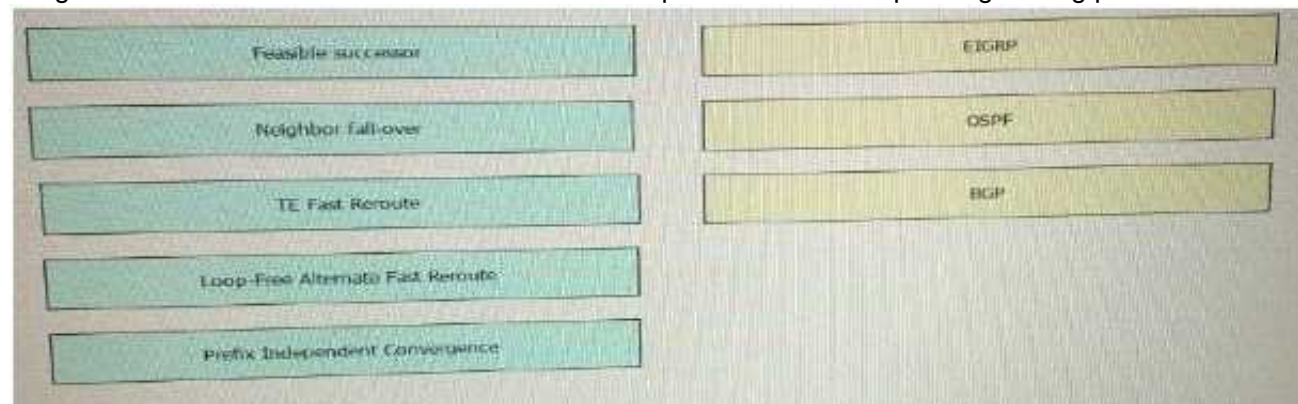
- A. DHCP snooping
- B. ARP spoofing
- C. ARP rate limiting
- D. Dynamic ARP Inspection
- E. Port security

Answer: AD

NEW QUESTION 64

DRAG DROP

Drag the fast Reroute mechanism on the left and drop it onto the corresponding routing protocol on the right



- A. Mastered
- B. Not Mastered

Answer: A

Explanation:

A, D, E

NEW QUESTION 66

Which two options are potential problems with route aggregation? (Choose two)

- A. Maintaining host IP addresses during migrations
- B. Route flapping

- C. Suboptimal routing
- D. Topology hiding
- E. Asymmetric routing
- F. Prefix hijacking

Answer: CE

NEW QUESTION 70

You are performing a BGP design review for a service provider that offers MPLS-based services to their end customers. The network is comprised of several PE routers that run iBGP with a pair of route reflectors for all BGP address families. Which two options about the use of Constrained Route Distribution for BGP/MPLS VPNs are true? (Choose two.)

- A. The RRs do not need to advertise any route target filter toward the PE routers
- B. The RR must advertise the default route target filter toward the PE routers
- C. Both PE and RR routers must support this feature
- D. This feature must be enabled on all devices in the network at the same time
- E. Route distinguishers are used to constrain routing updates

Answer: BC

NEW QUESTION 73

You are reviewing a new data center design for a customer. They chose to leverage a tunnel-based overlay technology for quick deployment and multitenant security. Which design concern can affect the availability across the data center?

- A. Nonoverlapping IP address space between the overlay networks
- B. MTU size on the underlay links
- C. Review of common paths on the underlay links
- D. Paper placement of STP root bridge in overlay networks

Answer: B

NEW QUESTION 75

Which two options must be part of your network design to support dynamic mutual redistribution between multiple OSPFv2 and IS-IS boundaries, to avoid suboptimal routing? (Choose two)

- A. Matching OSPF external routes
- B. Route aggregation
- C. Route tagging
- D. Route filtering
- E. Disabling IS-IS wide metrics

Answer: CD

NEW QUESTION 77

Which two statements about AToM are true? (Choose two)

- A. It encapsulates Layer 2 frames at the egress PE
- B. When using AToM, the IP precedence field is not copied to the MPLS packet
- C. AToM supports connecting different L2 technologies using interworking option
- D. The loopback address of the PE router must be either /24 or /32
- E. It provides support for L2VPN features on ATM interfaces

Answer: CE

NEW QUESTION 80

Which options do you investigate first when designing fast network convergence?

- A. Routing protocol database size
- B. MTU of the involved interfaces
- C. Link speed between sites
- D. Supported Layer 3 failure detection mechanism

Answer: D

NEW QUESTION 82

Which mechanism enables small, unmanaged switches to plug into ports of access switches without risking switch loops?

- A. PortFast
- B. UDLD
- C. Root guard
- D. BPDU guard

Answer: C

NEW QUESTION 83

You are redesigning a single-level IS-IS network with 500 routers, which have short-haul and long-haul links. Most of the time the routing domain is stable, but periodically interfaces on long-haul links bounce for a short period of time, causing 10 to 20 flaps in a few minutes. The probable cause is local road construction. Although fast convergence is important, the client has concerns about taxing CPU cycles on the older routing platforms. What change should you recommend that both protects the CPU of the older routers during the short periods of excessive flapping, yet does not have an impact on fast convergence for all interface failures?

- A. Modify hello timers on routers with short-haul links
- B. Implement LSP generation throttling on routers with long-haul links
- C. Modify the length of time that an LSP remains in the router database without being refreshed on all routers
- D. Implement a delay between successive IS-IS LSP packet transmissions on routers with long-haul links

Answer: D

NEW QUESTION 88

Which open source message broker is in the Cisco Cloud Center?

- A. Apache kafka
- B. HornetQ
- C. RabbitMQ
- D. Fuse Message Broker
- E. Oracle Message Broker

Answer: C

NEW QUESTION 92

You are designing dual-homed active/active ISP connections from an enterprise customer for internet services, and you have recommended BGP between the customer and ISP. When three security mechanisms do you enable to secure the connection? (Choose three)

- A. uRPF in strict mode
- B. remote triggered black holes
- C. IDS
- D. GTSM
- E. Routing protocol authentication
- F. uRPF in loose mode

Answer: BEF

NEW QUESTION 94

Which aspect is a significant disadvantage of containers?

- A. Security
- B. Time to deploy
- C. Inefficiency
- D. Reduced operational overhead
- E. Resource consumption

Answer: A

NEW QUESTION 95

Which two statements about VXLAN are true? (Choose two)

- A. VXLAN is a Cisco proprietary solution
- B. VXLAN is an encapsulation method used to create a Layer 3 overlay network
- C. VXLAN can be used to enforce Layer 2 isolation in a multitenant infrastructure
- D. VXLAN uses the Spanning Tree protocol for loop prevention
- E. VXLAN overcomes the 802.1Q virtual LAN address space limitation

Answer: BE

NEW QUESTION 99

A new video multicast application is deployed in the network. The application team wants to use the 239.0.0.1 multicast group to stream the video to users. They want to know if this choice will impact the existing multicast design. What impact will their choice have on the existing multicast design?

- A. Because 239.0.0.1 is a private multicast range, a flood of PIM packets that have to be processed by the CPU and hosts will be sent by the routers in the network.
- B. Because 239.0.0.1 is a private multicast range, the rendezvous point has to send out constant group updates that will have to be processed by the CPU and hosts.
- C. The multicast application sends too many packets into the network and the network infrastructure drops packets.
- D. The 239.0.0.1 group address maps to a system MAC address, and all multicast traffic will have to be sent to the CPU and flooded out all ports.

Answer: B

NEW QUESTION 100

VPLS is implemented in a Layer 2 network with 2000 VLANs. Which must be the primary concern to ensure successful deployment of VPLS?

- A. The underlying transport mechanism
- B. PE scalability
- C. Flooding is necessary to propagate MAC address reachability information
- D. VLAN scalability

Answer: C

Explanation:

[I think B not 100% sure]

NEW QUESTION 105

Which two conditions must be met for EIGRP to maintain an alternate loop-free path to a remote network? (Choose two)

- A. The Reported Distance from a successor is lower than the local Feasible Distance
- B. The Reported Distance from a successor is higher than the local Feasible Distance
- C. A feasible successor must be present
- D. The feasible Distance from a successor is lower than the local Reported Distance
- E. The feasibility condition do not need to be met

Answer: AC

NEW QUESTION 109

When designing fast convergence on a network using loop-free alternate, on which two basis can the next-hop routes be precomputed? (Choose two)

- A. Per neighbor
- B. Per network type
- C. Per link
- D. Per prefix
- E. Per failure type

Answer: CD

NEW QUESTION 110

Which three different behaviors must a network designer expect when bidirectional PIM is used instead of PIM Sparse Mode? (Choose three)

- A. The source IP addresses from the multicast senders cannot be seen in the multicast routing table
- B. The RPF check does not prevent routing loops when bidirectional PIM is used
- C. Many possible rendezvous point can be used for bidirectional PIM as compared to PIM Sparse Mode
- D. PIMv2 BSR is not supported with bidirectional PIM
- E. The join messages to join a bidirectional PIM multicast group are different compared to PIM-SM
- F. No rendezvous point is required when bidirectional PIM is used
- G. Auto-RP is not supported with bidirectional PIM

Answer: ADE

NEW QUESTION 115

Which solution suppress the effect of excessive interface flapping events on routing protocols?

- A. IP Event Dampening
- B. SPF Backoff
- C. Carrier Delay
- D. BFD

Answer: A

NEW QUESTION 119

For a redesign requirement of the service provider network, summarization was implemented at multiple locations for each summary range. Now some customers of the service provider are complaining of higher latency and performance issues for a server hosted in the summarized are

- A. Which design issues must be considered when creating the summarization?
- B. Summarization adds CPU overhead on the routers sourcing the summarized advertisement.
- C. Summarization prevents the visibility of the metric to the component subnets.
- D. Summarization causes packet loss when RPF is enabled.
- E. Summarization creates routing loops.

Answer: B

NEW QUESTION 122

When a multiprotocol routing environment is designed to have several routers redistributing among the routing domains, how can routing loops be avoided?

- A. By implementing spanning tree
- B. By activating split horizon
- C. By using the AS-path attribute
- D. By using route tags

Answer: D

NEW QUESTION 123

Which are two data plane hardening techniques? (Choose two)

- A. Infrastructure ACLs
- B. Control Plane Policing
- C. Redundant AAA servers
- D. Disable unused services
- E. Routing protocol authentication
- F. SNMPv3
- G. Warning banners

Answer: AB

NEW QUESTION 128

A large enterprise network has a partial mesh network with multiples redundant links. OSPF is used as IGP and it is implemented in a single-area. The network has slow convergence times and there is a high CPU utilization on the routers. Which solution can address these issues while ensuring that the network scales?

- A. Break the routing domain into separate OSPF areas
- B. Make it a hub-and-spoke topology
- C. Replace OSPF with BGP
- D. Reduce the number of links between routers in the network
- E. Upgrade the routers with higher CPU and memory resources

Answer: A

NEW QUESTION 133

In a network with dynamic mutual redistribution between multiple OSPFv2 and EIGRP boundaries, which two mechanisms avoid suboptimal routing? (Choose two)

- A. Route filtering
- B. AD manipulation
- C. Matching EIGRP process ID
- D. Matching OSPF external routes
- E. Route tagging

Answer: AE

NEW QUESTION 134

A network design engineer is designing a new storage area network that combines multiple separate legacy SAN environments within a data center. Which technology isolates events within one of the SAN environment from the others?

- A. FCIP tunnels
- B. N-port ID Virtualization
- C. N-Port Virtualization
- D. Virtual SANs

Answer: D

NEW QUESTION 136

In an Ethernet link containing five routers with OSPF network interface type configured as broadcast, how many OSPF adjacencies are established on this Ethernet link?

- A. 7
- B. 5
- C. 10
- D. 20
- E. 6

Answer: A

NEW QUESTION 140

DRAG DROP

You are designing a new data center network. Drag and drop new data center requirements on the left into the appropriate design principle on the right.

design a VLAN dedicated for storage traffic

fault isolation

design for server NIC teaming

redundancy

design a single VLAN per access switch

segmentation

design diverse cabling cabinets

- A. Mastered
- B. Not Mastered

Answer: A

Explanation:

design a single VLAN per access switch

design for server NIC teaming

design a VLAN dedicated for storage traffic

NEW QUESTION 141

.....

Thank You for Trying Our Product

* 100% Pass or Money Back

All our products come with a 90-day Money Back Guarantee.

* One year free update

You can enjoy free update one year. 24x7 online support.

* Trusted by Millions

We currently serve more than 30,000,000 customers.

* Shop Securely

All transactions are protected by VeriSign!

100% Pass Your 352-001 Exam with Our Prep Materials Via below:

<https://www.certleader.com/352-001-dumps.html>