

Fortinet

Exam Questions NSE4

Fortinet Network Security Expert 4 Written Exam (400)



NEW QUESTION 1

An administrator needs to increase network bandwidth and provide redundancy.
 What interface type must the administrator select to bind multiple FortiGate interfaces?

- A. VLAN interface
- B. Software Switch interface
- C. Aggregate interface
- D. Redundant interface

Answer: C

NEW QUESTION 2

Which two types of traffic are managed only by the management VDOM? (Choose two.)

- A. FortiGuard web filter queries
- B. PKI
- C. Traffic shaping
- D. DNS

Answer: AD

NEW QUESTION 3

Which of the following statements is true regarding SSL VPN settings for an SSL VPN portal?

- A. By default, FortiGate uses WINS servers to resolve names.
- B. By default, the SSL VPN portal requires the installation of a client's certificate.
- C. By default, split tunneling is enabled.
- D. By default, the admin GUI and SSL VPN portal use the same HTTPS port.

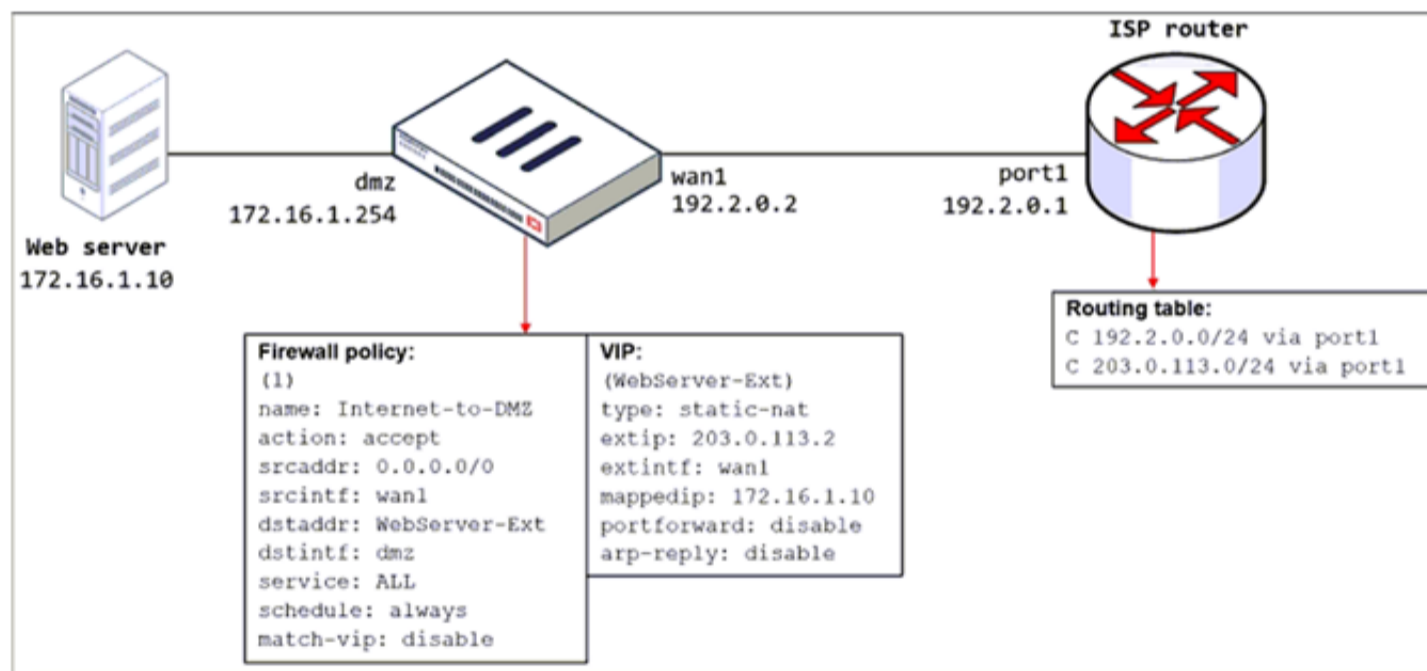
Answer: D

NEW QUESTION 4

Refer to the exhibit.

The exhibit shows a diagram of a FortiGate device connected to the network, the firewall policy and VIP configuration on the FortiGate device, and the routing table on the ISP router.

When the administrator tries to access the web server public address (203.0.113.2) from the internet, the connection times out. At the same time, the administrator runs a sniffer on FortiGate to capture incoming web traffic to the server and does not see any output.



Based on the information shown in the exhibit, what configuration change must the administrator make to fix the connectivity issue?

- A. Configure a loopback interface with address 203.0.113.2/32.
- B. In the VIP configuration, enable arp-reply.
- C. Enable port forwarding on the server to map the external service port to the internal service port.
- D. In the firewall policy configuration, enable match-vip.

Answer: D

NEW QUESTION 5

Why does FortiGate keep TCP sessions in the session table for some seconds even after both sides (client and server) have terminated the session?

- A. To remove the NAT operation.
- B. To generate logs
- C. To finish any inspection operations.
- D. To allow for out-of-order packets that could arrive after the FIN/ACK packets.

Answer: D

NEW QUESTION 6

A team manager has decided that, while some members of the team need access to a particular website, the majority of the team does not. Which configuration option is the most effective way to support this request?

- A. Implement a web filter category override for the specified website
- B. Implement a DNS filter for the specified website.
- C. Implement web filter quotas for the specified website
- D. Implement web filter authentication for the specified website.

Answer: D

NEW QUESTION 7

Which two statements are correct about SLA targets? (Choose two.)

- A. You can configure only two SLA targets per one Performance SLA.
- B. SLA targets are optional.
- C. SLA targets are required for SD-WAN rules with a Best Quality strategy.
- D. SLA targets are used only when referenced by an SD-WAN rule.

Answer: BD

NEW QUESTION 8

You have enabled logging on your FortiGate device for Event logs and all Security logs, and you have set up logging to use the FortiGate local disk. What is the default behavior when the local disk is full?

- A. Logs are overwritten and the only warning is issued when log disk usage reaches the threshold of 95%.
- B. No new log is recorded until you manually clear logs from the local disk.
- C. Logs are overwritten and the first warning is issued when log disk usage reaches the threshold of 75%.
- D. No new log is recorded after the warning is issued when log disk usage reaches the threshold of 95%.

Answer: C

NEW QUESTION 9

Refer to the exhibit.

Outgoing interfaces

- ☐ Manual
Manually assign outgoing interfaces.
- ☒ **Best Quality**
The interface with the best measured performance is selected.
- ☐ Lowest Cost (SLA)
The interface that meets SLA targets is selected. When there is a tie, the interface with the lowest assigned cost is selected.
- ☐ Maximize Bandwidth (SLA)
Traffic is load balanced among interfaces that meet SLA targets.

Interface preference

port1	X
port2	X
port3	X
port4	X

Measured SLA: SLA_1

Quality criteria: Latency

Status:

```
NGFW-1 # diagnose sys virtual-wan-link health-check
Health Check(DC_PBX_SLA):
Seq(1 port1): state(alive), packet-loss(0.000%) latency(21.566), jitter(2.685) sla_map=0x
Seq(2 port2): state(alive), packet-loss(0.000%) latency(54.349), jitter(4.287) sla_map=0x
Seq(3 port3): state(alive), packet-loss(0.100%) latency(32.683), jitter(5.685) sla_map=0x
Seq(4 port4): state(alive), packet-loss(2.010%) latency(48.881), jitter(4.287) sla_map=0x
```

The exhibit contains the configuration for an SD-WAN Performance SLA, as well as the output of diagnose sys virtual-wan-link health-check. Which interface will be selected as an outgoing interface?

- A. port2
- B. port4
- C. port3
- D. port1

Answer: D

Explanation:

Port 1 shows the lowest latency.

NEW QUESTION 10

Which two types of traffic are managed only by the management VDOM? (Choose two.)

- A. FortiGuard web filter queries
- B. PKI
- C. Traffic shaping
- D. DNS

Answer: AD

NEW QUESTION 10

In consolidated firewall policies, IPv4 and IPv6 policies are combined in a single consolidated policy. Instead of separate policies. Which three statements are true about consolidated IPv4 and IPv6 policy configuration? (Choose three.)

- A. The IP version of the sources and destinations in a firewall policy must be different.
- B. The Incoming Interface
- C. Outgoing Interface
- D. Schedule, and Service fields can be shared with both IPv4 and IPv6.
- E. The policy table in the GUI can be filtered to display policies with IPv4, IPv6 or IPv4 and IPv6 sourcesand destinations.
- F. The IP version of the sources and destinations in a policy must match.
- G. The policy table in the GUI will be consolidated to display policies with IPv4 and IPv6 sources and destinations.

Answer: BDE

NEW QUESTION 12

What are two benefits of flow-based inspection compared to proxy-based inspection? (Choose two.)

- A. FortiGate uses fewer resources.
- B. FortiGate performs a more exhaustive inspection on traffic.
- C. FortiGate adds less latency to traffic.
- D. FortiGate allocates two sessions per connection.

Answer: AC

NEW QUESTION 13

By default, FortiGate is configured to use HTTPS when performing live web filtering with FortiGuard servers. Which CLI command will cause FortiGate to use an unreliable protocol to communicate with FortiGuard servers for live web filtering?

- A. set fortiguard-anycast disable
- B. set webfilter-force-off disable
- C. set webfilter-cache disable
- D. set protocol tcp

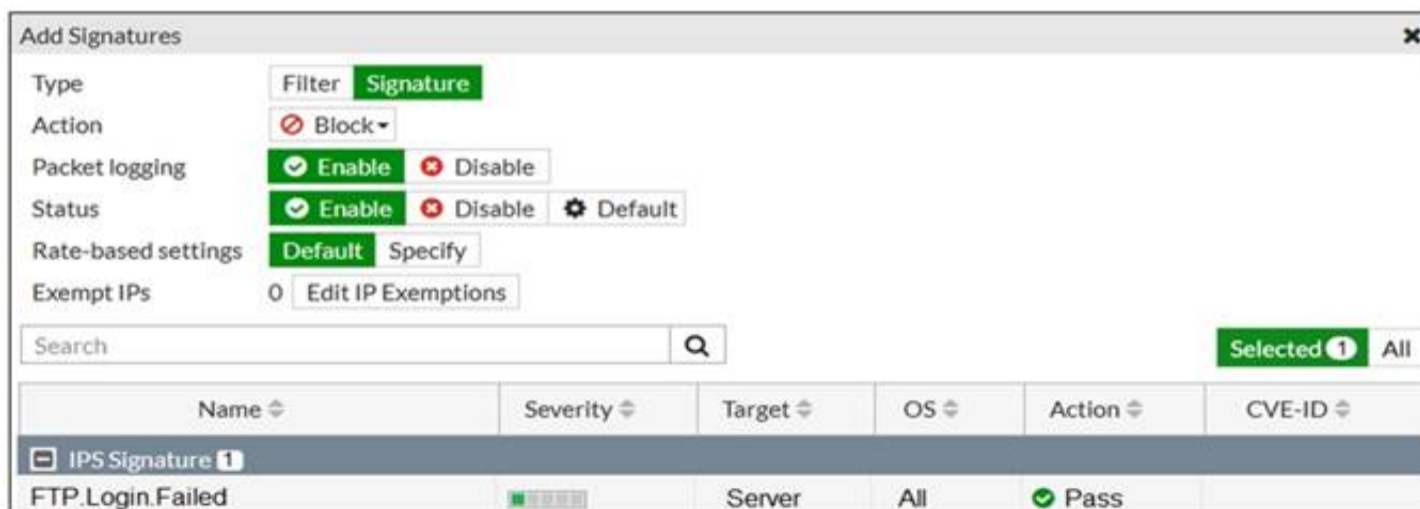
Answer: A

Explanation:

y default, "fortiguard-anycast" is enabled, and this setting only works with "set protocol https". To use udp (ie. "set protocol udp"), "fortiguard-anycast" must be disabled.

NEW QUESTION 14

Refer to the exhibit.



Name	Severity	Target	OS	Action	CVE-ID
IPS Signature 1		Server	All	Pass	

Review the Intrusion Prevention System (IPS) profile signature settings. Which statement is correct in adding the FTP.Login.Failed signature to the IPS sensor profile?

- A. The signature setting uses a custom rating threshold.
- B. The signature setting includes a group of other signatures.
- C. Traffic matching the signature will be allowed and logged.
- D. Traffic matching the signature will be silently dropped and logged.

Answer: D

Explanation:

Action is drop, signature default action is listed only in the signature, it would only match if action was set to default.

NEW QUESTION 17

An administrator needs to configure VPN user access for multiple sites using the same soft FortiToken. Each site has a FortiGate VPN gateway. What must an administrator do to achieve this objective?

- A. The administrator can register the same FortiToken on more than one FortiGate.
- B. The administrator must use a FortiAuthenticator device
- C. The administrator can use a third-party radius OTP server.
- D. The administrator must use the user self-registration server.

Answer: B

NEW QUESTION 21

Which statement about the IP authentication header (AH) used by IPsec is true?

- A. AH does not provide any data integrity or encryption.
- B. AH does not support perfect forward secrecy.
- C. AH provides data integrity but no encryption.
- D. AH provides strong data integrity but weak encryption.

Answer: C

NEW QUESTION 22

Which feature in the Security Fabric takes one or more actions based on event triggers?

- A. Fabric Connectors
- B. Automation Stitches
- C. Security Rating
- D. Logical Topology

Answer: B

NEW QUESTION 25

Which two statements are true about the FGCP protocol? (Choose two.)

- A. FGCP elects the primary FortiGate device.
- B. FGCP is not used when FortiGate is in transparent mode.
- C. FGCP runs only over the heartbeat links.
- D. FGCP is used to discover FortiGate devices in different HA groups.

Answer: AC

Explanation:

The FGCP (FortiGate Clustering Protocol) is a protocol that is used to manage high availability (HA) clusters of FortiGate devices. It performs several functions, including the following:

FGCP elects the primary FortiGate device: In an HA cluster, FGCP is used to determine which FortiGate device will be the primary device, responsible for handling traffic and making decisions about what to allow or block. FGCP uses a variety of factors, such as the device's priority, to determine which device should be the primary.

FGCP runs only over the heartbeat links: FGCP communicates between FortiGate devices in the HA cluster using the heartbeat links. These are dedicated links that are used to exchange status and control information between the devices. FGCP does not run over other types of links, such as data links.

NEW QUESTION 28

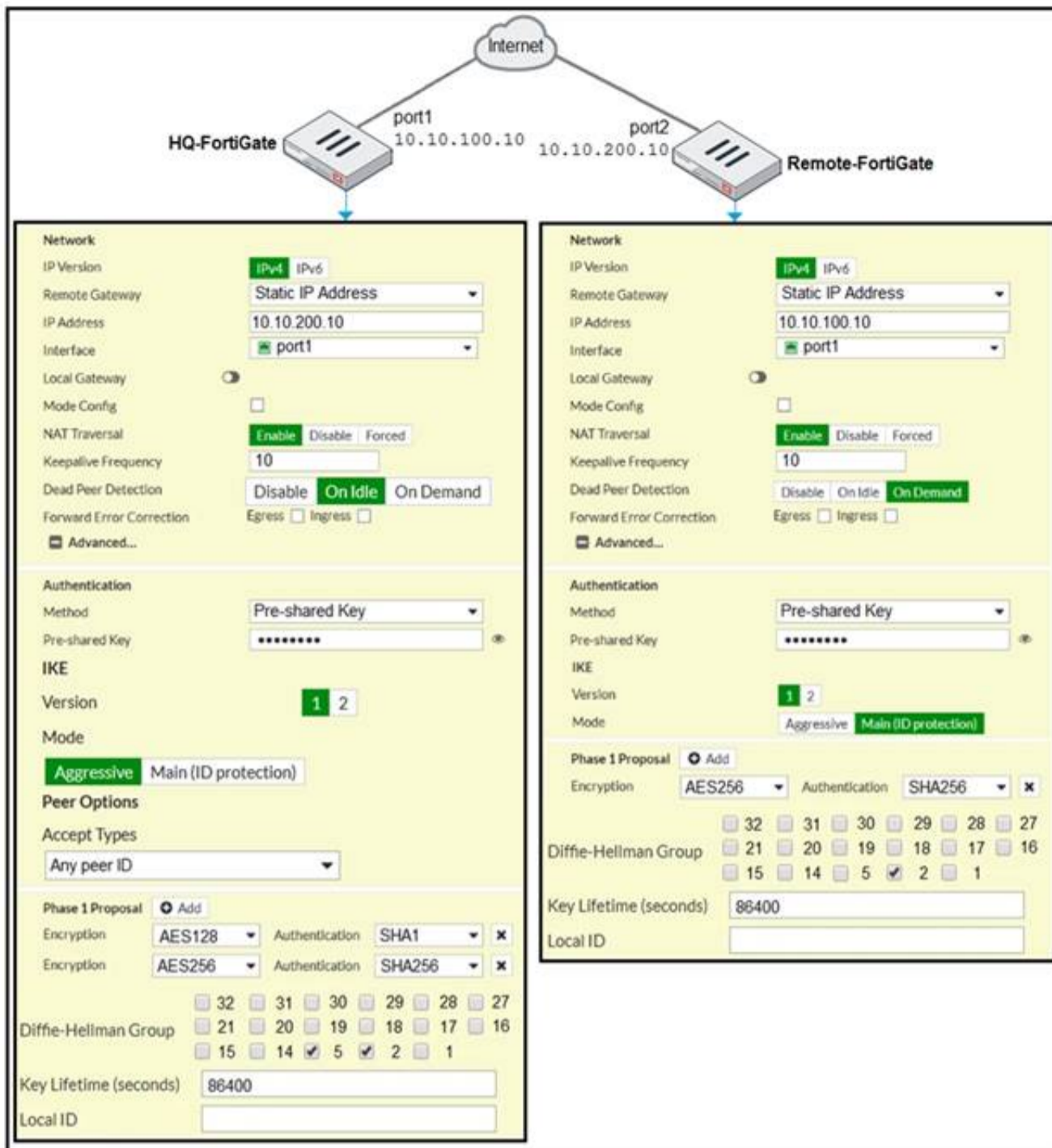
FortiGate is operating in NAT mode and is configured with two virtual LAN (VLAN) subinterfaces added to the same physical interface. In this scenario, which statement about VLAN IDs is true?

- A. The two VLAN subinterfaces can have the same VLAN ID only if they belong to different VDOMs.
- B. The two VLAN subinterfaces must have different VLAN IDs.
- C. The two VLAN subinterfaces can have the same VLAN ID only if they have IP addresses in the same subnet.
- D. The two VLAN subinterfaces can have the same VLAN ID only if they have IP addresses in different subnets.

Answer: CD

NEW QUESTION 33

A network administrator is troubleshooting an IPsec tunnel between two FortiGate devices. The administrator has determined that phase 1 fails to come up. The administrator has also re-entered the pre-shared key on both FortiGate devices to make sure they match.



Based on the phase 1 configuration and the diagram shown in the exhibit, which two configuration changes will bring phase 1 up? (Choose two.)

- A. On HQ-FortiGate, set IKE mode to Main (ID protection).
- B. On both FortiGate devices, set Dead Peer Detection to On Demand.
- C. On HQ-FortiGate, disable Diffie-Hellman group 2.
- D. On Remote-FortiGate, set port2 as Interface.

Answer: AD

NEW QUESTION 36

What is the limitation of using a URL list and application control on the same firewall policy, in NGFW policy-based mode?

- A. It limits the scanning of application traffic to the DNS protocol only.
- B. It limits the scanning of application traffic to use parent signatures only.
- C. It limits the scanning of application traffic to the browser-based technology category only.
- D. It limits the scanning of application traffic to the application category only.

Answer: D

Explanation:

<https://docs.fortinet.com/document/fortigate/5.6.0/cookbook/38324/ngfw-policy-based-mode>

In policy-based mode on a next-generation firewall (NGFW), you can use a URL list and application control in the same firewall policy to control traffic to and from specific websites or applications. However, there is a limitation to consider when using these features together:

It limits the scanning of application traffic to the application category only: The URL list and application control both rely on the firewall to inspect traffic and make decisions about what to allow or block. However, the URL list is limited to inspecting traffic at the URL level, while the application control can inspect traffic at a deeper level, such as at the application layer. This means that the application control is more comprehensive and can provide more granular control over specific applications, while the URL list is limited to controlling traffic at the URL level.

NEW QUESTION 38

A network administrator wants to set up redundant IPsec VPN tunnels on FortiGate by using two IPsec VPN tunnels and static routes.

- * All traffic must be routed through the primary tunnel when both tunnels are up
- * The secondary tunnel must be used only if the primary tunnel goes down
- * In addition, FortiGate should be able to detect a dead tunnel to speed up tunnel failover

Which two key configuration changes are needed on FortiGate to meet the design requirements? (Choose two.)

- A. Configure a high distance on the static route for the primary tunnel, and a lower distance on the static route for the secondary tunnel.
- B. Enable Dead Peer Detection.
- C. Configure a lower distance on the static route for the primary tunnel, and a higher distance on the static route for the secondary tunnel.
- D. Enable Auto-negotiate and Autokey Keep Alive on the phase 2 configuration of both tunnels.

Answer: BC

Explanation:

Study Guide – IPsec VPN – IPsec configuration – Phase 1 Network.

When Dead Peer Detection (DPD) is enabled, DPD probes are sent to detect a failed tunnel and bring it down before its IPsec SAs expire. This failure detection mechanism is very useful when you have redundant paths to the same destination, and you want to failover to a backup connection when the primary connection fails to keep the connectivity between the sites up.

There are three DPD modes. On demand is the default mode. Study Guide – IPsec VPN – Redundant VPNs.

Add one phase 1 configuration for each tunnel. DPD should be enabled on both ends.

Add at least one phase 2 definition for each phase 1.

Add one static route for each path. Use distance or priority to select primary routes over backup routes (routes for the primary VPN must have a lower distance or lower priority than the backup). Alternatively, use dynamic routing.

Configure FW policies for each IPsec interface.

NEW QUESTION 39

Refer to the exhibit, which contains a session diagnostic output.

```
session info: proto=17 proto_state=01 duration=254 expire=179 timeout=0 flags=00000000 socktype=0 sockport=0 av_idx=0 use=3
origin-shaper=
reply-shaper=
per_ip_shaper=
class_id=0 ha_id=0 policy_dir=0 tunnel=/ helper=dns-udp vlan_cos=0/255
state=log may_dirty f00 log-start
statistic(bytes/packets/allow_err): org=1420/22/1 reply=5678/22/1 tuples=2
tx speed(Bps/kbps): 5/0 rx speed(Bps/kbps): 22/0
origin->sink: org pre->post, reply pre->post dev=5->3/3->5 gwy=10.200.1.254/10.0.1.200
hook=post dir=org act=snat 10.0.1.200:2486->208.91.112.53:53(10.200.1.1:62902)
hook=pre dir=reply act=dnat 208.91.112.53:53->10.200.1.1:62902(10.0.1.200:2486)
misc=0 policy_id=3 auth_info=0 chk_client_info=0 vd=0
serial=0001fc1e tos=ff/ff app_list=0 app=0 url_cat=0
rpdb_link_id= 00000000 rpdb_svc_id=0 ngfwid=n/a
npu_state=0x040000
```

Which statement is true about the session diagnostic output?

- A. The session is a UDP unidirectional state.
- B. The session is in TCP ESTABLISHED state.
- C. The session is a bidirectional UDP connection.
- D. The session is a bidirectional TCP connection.

Answer: C

Explanation:

<https://kb.fortinet.com/kb/viewContent.do?externalId=FD30042>

NEW QUESTION 43

Which of the following conditions must be met in order for a web browser to trust a web server certificate signed by a third-party CA?

- A. The public key of the web server certificate must be installed on the browser.
- B. The web-server certificate must be installed on the browser.
- C. The CA certificate that signed the web-server certificate must be installed on the browser.
- D. The private key of the CA certificate that signed the browser certificate must be installed on the browser.

Answer: C

NEW QUESTION 47

Which statement about video filtering on FortiGate is true?

- A. Full SSL Inspection is not required.
- B. It is available only on a proxy-based firewall policy.
- C. It inspects video files hosted on file sharing services.
- D. Video filtering FortiGuard categories are based on web filter FortiGuard categories.

Answer: B

NEW QUESTION 51

An administrator has configured two-factor authentication to strengthen SSL VPN access. Which additional best practice can an administrator implement?

- A. Configure Source IP Pools.
- B. Configure split tunneling in tunnel mode.
- C. Configure different SSL VPN realms.
- D. Configure host check .

Answer: D

NEW QUESTION 56

Consider the topology:

Application on a Windows machine <--(SSL VPN) --> FGT --> Telnet to Linux server.

An administrator is investigating a problem where an application establishes a Telnet session to a Linux server over the SSL VPN through FortiGate and the idle session times out after about 90 minutes. The administrator would like to increase or disable this timeout.

The administrator has already verified that the issue is not caused by the application or Linux server. This issue does not happen when the application establishes a Telnet connection to the Linux server directly on the LAN.

What two changes can the administrator make to resolve the issue without affecting services running through FortiGate? (Choose two.)

- A. Set the maximum session TTL value for the TELNET service object.
- B. Set the session TTL on the SSLVPN policy to maximum, so the idle session timeout will not happen after 90 minutes.
- C. Create a new service object for TELNET and set the maximum session TTL.
- D. Create a new firewall policy and place it above the existing SSLVPN policy for the SSL VPN traffic, and set the new TELNET service object in the policy.

Answer: CD

NEW QUESTION 59

Examine this output from a debug flow:

```
id=20085 trace_id=1 func=print_pkt_detail line=5363 msg="vd-root received a packet(proto=1,
10.0.1.10:1->10.200.1.254:2048)
from port3. type=8, code=0, id=1, seq=33."
id=20085 trace_id=1 func=init_ip_session_common line=5519 msg="allocate a new session=00000340"
id=20085 trace_id=1 func=vf_ip_route_input_common line=2583 msg="find a route: flag=04000000 gw=10.200.1.254 via
port1"
id=20085 trace_id=1 func=fw_forward_handler line=586 msg="Denied by forward policy check (policy 0)"
```

Why did the FortiGate drop the packet?

- A. The next-hop IP address is unreachable.
- B. It failed the RPF check .
- C. It matched an explicitly configured firewall policy with the action DENY.
- D. It matched the default implicit firewall policy.

Answer: D

Explanation:

<https://kb.fortinet.com/kb/documentLink.do?externalID=13900>

NEW QUESTION 64

On FortiGate, which type of logs record information about traffic directly to and from the FortiGate management IP addresses?

- A. System event logs
- B. Forward traffic logs
- C. Local traffic logs
- D. Security logs

Answer: C

NEW QUESTION 69

View the exhibit.

Destination	Subnet	Named Address	Internet Service
172.13.24.0/255.255.255.0			
Interface	TunnelB		
Administrative Distance	5		
Comments			
Status	<input checked="" type="checkbox"/> Enabled <input type="checkbox"/> Disabled		
Advanced Options			
Priority	30		

Destination	Subnet	Named Address	Internet Service
172.13.24.0/255.255.255.0			
Interface	TunnelA		
Administrative Distance	10		
Comments			
Status	<input checked="" type="checkbox"/> Enabled <input type="checkbox"/> Disabled		
Advanced Options			
Priority	0		

Which of the following statements are correct? (Choose two.)

- A. This setup requires at least two firewall policies with the action set to IPsec.
- B. Dead peer detection must be disabled to support this type of IPsec setup.
- C. The TunnelB route is the primary route for reaching the remote sit
- D. The TunnelA route is used only if the TunnelB VPN is down.
- E. This is a redundant IPsec setup.

Answer: CD

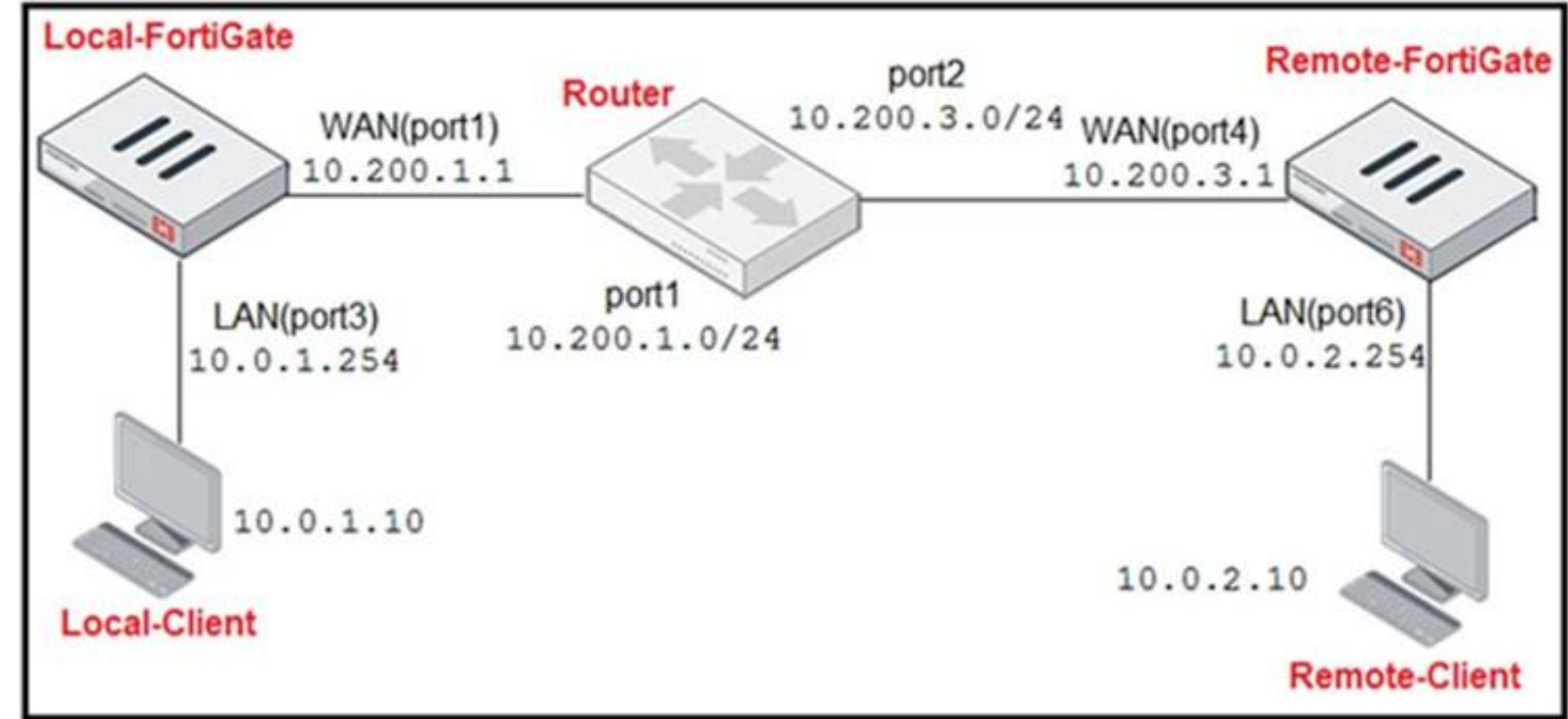
Explanation:

<https://docs.fortinet.com/document/fortigate/6.2.4/cookbook/632796/ospf-with-ipsec-vpn-for-network-redundan>

NEW QUESTION 73

Refer to the exhibit.

Network Diagram



Central SNAT Policies Local-FortiGate

ID	From	To	Source Address	Protocol Number	Destination Address	Translated Address
2	LAN(port3)	WAN(port1)	all	6	REMOTE_FORTIGATE	SNAT-Pool
1	LAN(port3)	WAN(port1)	all	1	all	SNAT-Remote1
3	LAN(port3)	WAN(port1)	all	2	all	SNAT-Remote

IP Pool Local-FortiGate

Name	External IP Range	Type	ARP Reply
SNAT-Pool	10.200.1.49-10.200.1.49	Overload	Enabled
SNAT-Remote	10.200.1.149-10.200.1.149	Overload	Enabled
SNAT-Remote1	10.200.1.99-10.200.1.99	Overload	Enabled

Protocol Number Table

Protocol	Protocol Number
TCP	6
ICMP	1
IGMP	2

The exhibit contains a network diagram, central SNAT policy, and IP pool configuration. The WAN (port1) interface has the IP address 10.200. 1. 1/24. The LAN (port3) interface has the IP address 10.0. 1.254/24. A firewall policy is configured to allow to destinations from LAN (port3) to WAN (port1). Central NAT is enabled, so NAT settings from matching Central SNAT policies will be applied. Which IP address will be used to source NAT the traffic, if the user on Local-Client (10.0. 1. 10) pings the IP address of Remote-FortiGate (10.200.3. 1)?

- A. 10.200. 1. 149
- B. 10.200. 1. 1
- C. 10.200. 1.49
- D. 10.200. 1.99

Answer: D

NEW QUESTION 75

An administrator has configured the following settings:

```
config system settings
set ses-denied-traffic enable
end
config system global
set block-session-timer 30
end
```

What are the two results of this configuration? (Choose two.)

- A. Device detection on all interfaces is enforced for 30 minutes.
- B. Denied users are blocked for 30 minutes.
- C. A session for denied traffic is created.
- D. The number of logs generated by denied traffic is reduced.

Answer: CD

Explanation:

ses-denied-traffic

Enable/disable including denied session in the session table. <https://docs.fortinet.com/document/fortigate/7.0.6/cli-reference/20620/config-system-settings-block-session-timer>

Duration in seconds for blocked sessions . integer

Minimum value: 1 Maximum value: 300

30

<https://docs.fortinet.com/document/fortigate/7.0.6/cli-reference/1620/config-system-global>

NEW QUESTION 80

In which two ways can RPF checking be disabled? (Choose two)

- A. Enable anti-replay in firewall policy.
- B. Disable the RPF check at the FortiGate interface level for the source check
- C. Enable asymmetric routing.
- D. Disable strict-arc-check under system settings.

Answer: CD

NEW QUESTION 85

Which CLI command will display sessions both from client to the proxy and from the proxy to the servers?

- A. diagnose wad session list
- B. diagnose wad session list | grep hook-pre&&hook-out
- C. diagnose wad session list | grep hook=pre&&hook=out
- D. diagnose wad session list | grep "hook=pre"&"hook=out"

Answer: A

NEW QUESTION 90

Refer to the exhibit.

```
FGT1 # get router info routing-table database
Codes: K - kernel, C - connected, S - static, R - RIP, B - BGP
       O - OSPF, IA - OSPF inter area
       N1 - OSPF NSSA external type 1, N2 - OSPF NSSA external type 2
       E1 - OSPF external type 1, E2 - OSPF external type 2
       i - IS-IS, L1 - IS-IS level-1, L2 - IS-IS level-2, ia - IS-IS inter area
       > - selected route, * - FIB route, p - stale info

S      *> 0.0.0.0/0 [10/0] via 172.20.121.2, port1, [20/0]
        *>          [10/0] via 10.0.0.2, port2, [30/0]
S      0.0.0.0/0 [20/0] via 192.168.15.2, port3, [10/0]
C      *> 10.0.0.0/24 is directly connected, port2
S      172.13.24.0/24 [10.0] is directly connected, port4
C      *> 172.20.121.0/24 is directly connected, port1
S      *> 192.167.1.0/24 [10/0] via 10.0.0.2, port2
C      *> 192.168.15.0/24 is directly connected, port3
```

Given the routing database shown in the exhibit, which two statements are correct? (Choose two.)

- A. The port3 default route has the highest distance.
- B. The port3 default route has the lowest metric.
- C. There will be eight routes active in the routing table.
- D. The port1 and port2 default routes are active in the routing table.

Answer: AD

NEW QUESTION 93

An administrator wants to configure timeouts for users. Regardless of the userTMs behavior, the timer should start as soon as the user authenticates and expire after the configured value.

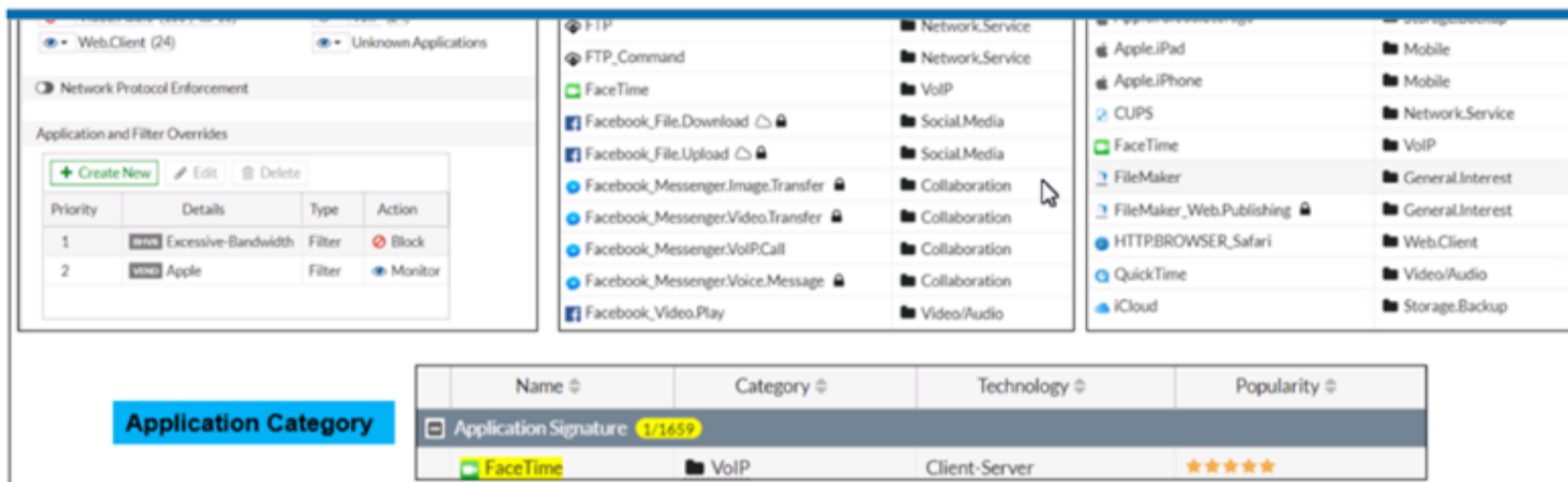
Which timeout option should be configured on FortiGate?

- A. auth-on-demand
- B. soft-timeout
- C. idle-timeout
- D. new-session
- E. hard-timeout

Answer: E

NEW QUESTION 97

Refer to the exhibit to view the application control profile.



Based on the configuration, what will happen to Apple FaceTime?

- A. Apple FaceTime will be blocked, based on the Excessive-Bandwidth filter configuration
- B. Apple FaceTime will be allowed, based on the Apple filter configuration.
- C. Apple FaceTime will be allowed only if the filter in Application and Filter Overrides is set to Learn
- D. Apple FaceTime will be allowed, based on the Categories configuration.

Answer: A

NEW QUESTION 99

Which two actions can you perform only from the root FortiGate in a Security Fabric? (Choose two.)

- A. Shut down/reboot a downstream FortiGate device.
- B. Disable FortiAnalyzer logging for a downstream FortiGate device.
- C. Log in to a downstream FortiSwitch device.
- D. Ban or unban compromised hosts.

Answer: AB

NEW QUESTION 102

Refer to the exhibit.

```
vcluster_nr=1
vcluster_0: start_time=1593701974 (2020-07-02 10:59:34), state/o/chg_time=2 (work)/2
(work)/1593701169 (2020-07-02 10:46:09)
  pingsvr_flip_timeout/expire=3600s/2781s
    'FGVM010000064692': ha_prio/o=1/1, link_failure=0, pingsvr_failure=0, flag=
0x00000000, uptime/reset_cnt=198/0
    'FGVM010000065036': ha_prio/o=0/0, link_failure=0, pingsvr_failure=0, flag=
0x00000001, uptime/reset_cnt=0/1
```

The exhibit displays the output of the CLI command: diagnose sys ha dump-by vcluster. Which two statements are true? (Choose two.)

- A. FortiGate SN FGVM010000065036 HA uptime has been reset.
- B. FortiGate devices are not in sync because one device is down.
- C. FortiGate SN FGVM010000064692 is the primary because of higher HA uptime.
- D. FortiGate SN FGVM010000064692 has the higher HA priority.

Answer: AD

Explanation:

* 1. Override is disable by default - OK

* 2. "If the HA uptime of a device is AT LEAST FIVE MINUTES (300 seconds) MORE than the HA Uptime of the other FortiGate devices, it becomes the primary" The QUESTION NO: here is : HA Uptime of FGVM01000006492 > 5 minutes? NO - 198 seconds < 300 seconds (5 minutes) Page 314 Infra Study Guide.
<https://docs.fortinet.com/document/fortigate/6.0.0/handbook/666653/primary-unit-selection-with-override-disab>

NEW QUESTION 104

An organization's employee needs to connect to the office through a high-latency internet connection. Which SSL VPN setting should the administrator adjust to prevent the SSL VPN negotiation failure?

- A. Change the session-ttl.
- B. Change the login timeout.
- C. Change the idle-timeout.
- D. Change the udp idle timer.

Answer: B

NEW QUESTION 107

Which two statements about FortiGate FSSO agentless polling mode are true? (Choose two.)

- A. FortiGate uses the AD server as the collector agent.
- B. FortiGate uses the SMB protocol to read the event viewer logs from the DCs.
- C. FortiGate does not support workstation check .
- D. FortiGate directs the collector agent to use a remote LDAP server.

Answer: BC

Explanation:

You can deploy FSSO w/o installing an agent. FG polls the DCs directly, instead of receiving logon info indirectly from a collector agent. Because FG collects all of the data itself, agentless polling mode requires greater system resources, and it doesn't scale as easily. Agentless polling mode operates in a similar way to WinSecLog, but with only two event IDs: 4768 and 4769. Because there's no collector agent, FG uses the SMB protocol to read the event viewer logs from the DCs. FG acts as a collector. It 's responsible for polling on top of its normal FSSO tasks but does not have all the extra features, such as workstation checks, that are available with the external collector agent.

NEW QUESTION 110

Which statement describes a characteristic of automation stitches?

- A. They can have one or more triggers.
- B. They can be run only on devices in the Security Fabric.
- C. They can run multiple actions simultaneously.
- D. They can be created on any device in the fabric.

Answer: C

NEW QUESTION 111

Which three options are the remote log storage options you can configure on FortiGate? (Choose three.)

- A. FortiCache
- B. FortiSIEM
- C. FortiAnalyzer
- D. FortiSandbox
- E. FortiCloud

Answer: BCE

NEW QUESTION 115

Which statement correctly describes the use of reliable logging on FortiGate?

- A. Reliable logging is enabled by default in all configuration scenarios.
- B. Reliable logging is required to encrypt the transmission of logs.
- C. Reliable logging can be configured only using the CLI.
- D. Reliable logging prevents the loss of logs when the local disk is full.

Answer: D

Explanation:

On a FortiGate device, reliable logging is a feature that helps to prevent the loss of log messages when the local disk is full. When reliable logging is enabled, the FortiGate will store log messages in a buffer until they can be written to the local disk. This helps to ensure that log messages are not lost due to a full disk, allowing administrators to maintain an accurate record of activity on the network. Reliable logging is not enabled by default in all configuration scenarios, and it does not encrypt the transmission of logs or require the use of the CLI to be configured. However, it is a useful feature to enable in order to maintain a comprehensive record of activity on the network and help with troubleshooting and security analysis.

NEW QUESTION 116

Which two statements are true when FortiGate is in transparent mode? (Choose two.)

- A. By default, all interfaces are part of the same broadcast domain.
- B. The existing network IP schema must be changed when installing a transparent mode.
- C. Static routes are required to allow traffic to the next hop.
- D. FortiGate forwards frames without changing the MAC address.

Answer: AD

NEW QUESTION 121

.....

Thank You for Trying Our Product

We offer two products:

1st - We have Practice Tests Software with Actual Exam Questions

2nd - Questions and Answers in PDF Format

NSE4 Practice Exam Features:

- * NSE4 Questions and Answers Updated Frequently
- * NSE4 Practice Questions Verified by Expert Senior Certified Staff
- * NSE4 Most Realistic Questions that Guarantee you a Pass on Your First Try
- * NSE4 Practice Test Questions in Multiple Choice Formats and Updates for 1 Year

100% Actual & Verified — Instant Download, Please Click
[Order The NSE4 Practice Test Here](#)