

98-361 Dumps

Microsoft MTA Software Development Fundamentals

<https://www.certleader.com/98-361-dumps.html>



NEW QUESTION 1

- (Topic 1)

In your student directory database, the Students table contains the following fields:

firstName lastName emailAddress telephoneNumtoer

You need to retrieve the data from the firstName, lastName, and emailAddress fields for all students listed in the directory. The results must be in alphabetical order according to lastName and then firstName.

Which statement should you use?

- ☐ A. `SELECT firstName, lastName, emailAddress
FROM Students
ORDER BY lastName, firstName`
- ☐ B. `SELECT firstName, lastName, emailAddress
FROM Students
SORT BY lastName, firstName`
- ☐ C. `SELECT firstName, lastName
FROM Students
ORDER BY lastName, firstName, emailAddress`
- ☐ D. `SELECT firstName, lastName, emailAddress
FROM Students BY lastName, firstName`

- A. Option A
B. Option B
C. Option C
D. Option D

Answer: A

Explanation:

to sort use: ORDER BY LastName, FirstName

NEW QUESTION 2

- (Topic 1)

This question requires that you evaluate the underlined text to determine if it is correct. The default entry point for a console application is the Class method.

Select the correct answer if the underlined text does not make the statement correct. Select

"No change is needed" if the underlined text makes the statement correct.

- A. No change is needed
B. Main
C. Program
D. Object

Answer: B

Explanation:

The default entry point for a console application is the Class Main.

NEW QUESTION 3

HOTSPOT - (Topic 1)

You are reviewing the following code that saves uploaded images.

```
struct ImageInfo
{
    public byte[] Data;
    public int Length;
    public Guid Id;
}

void Post()
{
    var uploaded = PostedImage();
    var newImage = new ImageInfo();
    newImage.Data = uploaded;
    newImage.Length = uploaded.Length;
    newImage.Id = Guid.NewGuid();
}
```

For each of the following statements, select Yes if the statement is true. Otherwise, select No. Each correct selection is worth one point.

Answer Area

Description of Behavior	Yes	No
The bytes that comprise the image are stored on the stack	<input type="radio"/>	<input type="radio"/>
The length of the image data is stored on the heap.	<input type="radio"/>	<input type="radio"/>
The Id of the image is stored on the stack.	<input type="radio"/>	<input type="radio"/>

- A. Mastered
B. Not Mastered

Answer: A

Explanation:

Answer Area

Description of Behavior	Yes	No
The bytes that comprise the image are stored on the stack	<input type="radio"/>	<input checked="" type="radio"/>
The length of the image data is stored on the heap.	<input type="radio"/>	<input checked="" type="radio"/>
The Id of the image is stored on the stack.	<input checked="" type="radio"/>	<input type="radio"/>

NEW QUESTION 4

- (Topic 1)

A data warehouse database is designed to:

- A. Enable business decisions by collecting, consolidating, and organizing data.
B. Support a large number of concurrent users.
C. Support real-time business operations.
D. Require validation of incoming data during real-time business transactions.

Answer: A

NEW QUESTION 5

HOTSPOT - (Topic 1)

For each of the following statements, select Yes if the statement is true. Otherwise, select No. Each correct selection is worth one point.

Answer Area

Statement	Yes	No
Within an XHTML document, the XHTML DOCTYPE declaration is mandatory.	<input type="radio"/>	<input type="radio"/>
Within an XHTML document, the XML namespace attribute in the html tag is mandatory.	<input type="radio"/>	<input type="radio"/>
Within an XHTML document, the html, head, title, and body tags are mandatory.	<input type="radio"/>	<input type="radio"/>

- A. Mastered
- B. Not Mastered

Answer: A

Explanation:

Answer Area

Statement	Yes	No
Within an XHTML document, the XHTML DOCTYPE declaration is mandatory.	<input checked="" type="radio"/>	<input type="radio"/>
Within an XHTML document, the XML namespace attribute in the html tag is mandatory.	<input checked="" type="radio"/>	<input type="radio"/>
Within an XHTML document, the html, head, title, and body tags are mandatory.	<input checked="" type="radio"/>	<input type="radio"/>

NEW QUESTION 6

- (Topic 1)

You have a class with a property.

You need to ensure that consumers of the class can write to the value of the property. Which keyword should you use?

- A. value
- B. add
- C. get
- D. set

Answer: D

Explanation:

Set:

The set { } implementation receives the implicit argument "value." This is the value to which the property is assigned.

* Property. On a class, a property gets and sets values. A simplified syntax form, properties are implemented in the IL as methods (get, set).

NEW QUESTION 7

- (Topic 1)

You are developing a webpage that enables students to manage races.

The webpage will display two lists: past races and upcoming races. The page also contains a sidebar with contact information and a panel with social media settings that can be edited. Race results can be shared on social media.

How many components will be on the webpage?

- A. 2
- B. 3
- C. 4
- D. 5

Answer: C

NEW QUESTION 8

- (Topic 1)

The following functions are defined:

```
private static int Printer(int j)
{
    for (var i = j; i > 0; i = Printer(i - 1))
    {
        Console.Write(i);
    }
    return j;
}
```

What does the console display after the following line? Printer(2);

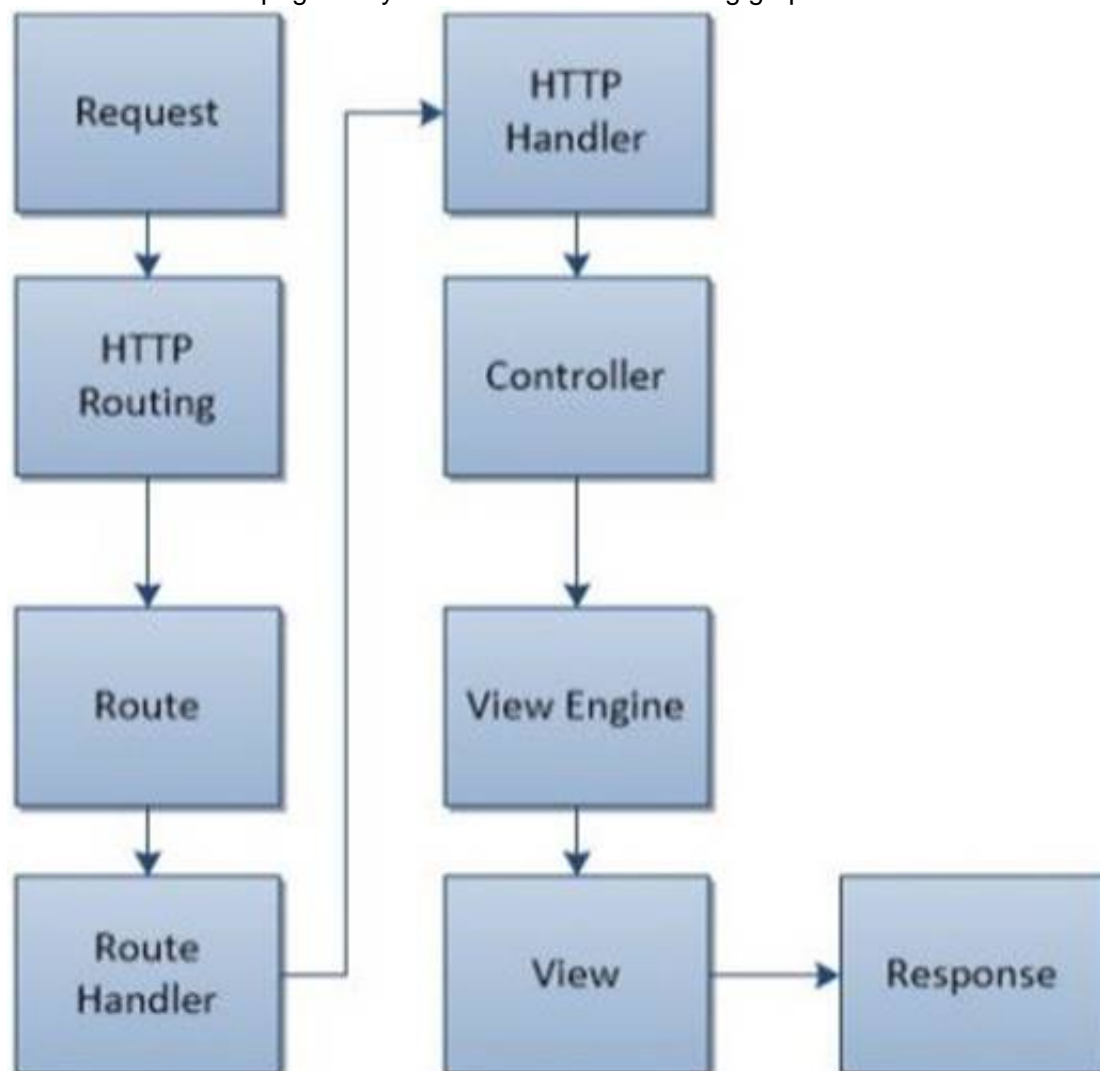
- A. 210
- B. 211
- C. 2101
- D. 2121

Answer: B

NEW QUESTION 9

HOTSPOT - (Topic 1)

The ASP.NET MVC page lifecycle is shown in the following graphic:



Use the drop-down menus to select the answer choice that completes each statement Each correct selection is worth one point.

Answer Area

The [answer choice] event determines which action method is needed and then calls that method.

The URL pattern is matched during the [answer choice] event.

Answer Area

The **[answer choice]** event determines which action method is needed and then calls that method.

▼

View
Route
Controller
HTTP Handler

The URL pattern is matched during the **[answer choice]** event.

▼

View
Route
Controller
HTTP Handler

- A. Mastered
- B. Not Mastered

Answer: A

Explanation:

Answer Area

The **[answer choice]** event determines which action method is needed and then calls that method.

▼

View
Route
Controller
HTTP Handler

The URL pattern is matched during the **[answer choice]** event.

▼

View
Route
Controller
HTTP Handler

NEW QUESTION 10

- (Topic 1)

This question requires that you evaluate the underlined text to determine if it is correct.

The bubble sort algorithm steps through the list to be sorted, comparing adjacent items and swapping them if they are in the wrong order

Select the correct answer if the underlined text does not make the statement correct. Select "No change is needed" if the underlined text makes the statement correct.

- A. No change is needed
- B. merge
- C. library
- D. insertion

Answer: :A

NEW QUESTION 10

- (Topic 1)

You have a SQL Server database named MyDB that uses SQL Server Authentication. Which connection string should you use to connect to MyDB?

- A. Data Source=MyDB; UserID=username; Password=P@sswOrd; Initial Catalog=Sales
- B. Data Source=MyDB; Integrated Security=SSPI; Initial Catalog=Sales
- C. Data Source=MyDB; Integrated Security=True; Initial Catalog=Sales
- D. Data Source=MyDB; Trusted_Connection=True; MultipleActiveResultSets=True; Initial Catalog=Sales

Answer: A

Explanation:

Integrated Security Integrated Security is by default set to false.

When false, User ID and Password are specified in the connection.

Incorrect:

not C: Windows Authentication (Integrated Security = true) remains the most secure way to log in to a SQL Server database.

NEW QUESTION 13

- (Topic 1)

You are developing an application that tracks tennis matches. A match is represented by the following class:

```
public class Match
{
    public Match()
    {
        Location = "unknown";
    }

    public string Location { get; set; }
    public DateTime? MatchDate { get; set; }
}
```

A match is created by using the following code:

```
var match = new Match
{
    Location = "north region",
    MatchDate = new DateTime(2013, 4, 14),
};
```

How many times is the Location property on the newly created Match class assigned?

- A. 1
- B. 2
- C. 3

Answer: C

NEW QUESTION 17

DRAG DROP - (Topic 1)

You are extending an application that stores and displays the results of various types of foot races. The application contains the following definitions:

```
public interface IDisplayResult
{
    void Display();
}
```

```
public class Race
{
    public int Seconds;

    public virtual void Display()
    {
        Console.WriteLine(Seconds);
    }
}
```

The following code is used to display the result for a race:

```
var r1 = new FootRace();
var r2 = r1 as IDisplayResult;
r1.Seconds = 99;

r1.Display();
r2.Display();
r1.DisplayRaw();
```

The contents of the console must be as follows:

- ? 99 seconds
- ? 1.65 minutes
- ? 99

You need to implement the FootRace class.

Match the method declaration to the method body, (To answer, drag the appropriate declaration from the column on the left to its body on the right. Each declaration may be used once, more than once, or not at all. Each correct match is worth one point.)

Code Segments	Answer Area
<input type="text" value="public override void Display()"/>	<pre>public class FootRace : Race, IDisplayResult { Code Segment { Console.WriteLine(Seconds + " seconds"); } Code Segment { base.Display(); } Code Segment { Console.WriteLine(Seconds / 60d + " minutes"); } }</pre>

- A. Mastered
B. Not Mastered

Answer: A

Explanation:

Code Segments	Answer Area
<input type="text" value="public override void Display()"/>	<pre>public class FootRace : Race, IDisplayResult { public override void Display() { Console.WriteLine(Seconds + " seconds"); } public void DisplayRaw() { base.Display(); } void IDisplayResult.Display() { Console.WriteLine(Seconds / 60d + " minutes"); } }</pre>

NEW QUESTION 22

HOTSPOT - (Topic 1)

You are creating a Windows Store application that uses the following gesture:



Use the drop-down menus to select the answer choice that completes each statement. Each correct selection is worth one point.

Answer Area

The gesture shown in the graphic is called [answer choice].

The surface displayed after the gesture has been completed is the [answer choice].

Answer Area

The gesture shown in the graphic is called [answer choice].

The surface displayed after the gesture has been completed is the [answer choice].

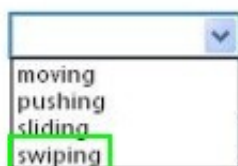
- A. Mastered
B. Not Mastered

Answer: A

Explanation:

Answer Area

The gesture shown in the graphic is called [answer choice].



The surface displayed after the gesture has been completed is the [answer choice].



NEW QUESTION 26

- (Topic 1)

What does the Console.Error property do within a console-based application?

- A. sets the standard error input stream
- B. gets the standard error output stream
- C. gets the standard error input stream
- D. sets the standard error output stream

Answer: B

Explanation:

The Console.Error property gets the standard error output stream.

NEW QUESTION 27

- (Topic 1)

Which function does Simple Object Access Protocol (SOAP) provide when using Web services?

- A. directory of registered Web services
- B. communications protocol
- C. security model
- D. model for describing Web services

Answer: B

Explanation:

SOAP, originally defined as Simple Object Access Protocol, is a protocol specification for exchanging structured information in the implementation of web services in computer networks. It relies on XML Information Set for its message format, and usually relies on other application layer protocols, most notably Hypertext Transfer Protocol (HTTP) or Simple Mail Transfer Protocol (SMTP), for message negotiation and transmission.

NEW QUESTION 32

HOTSPOT - (Topic 1)

You are reviewing the following class that is used to manage the results of a 5K race:

```
public class Player
{
    private string _name;
    public const string Key = "player";

    public bool MatchName(string searchTerm)
    {
        return _name.ToLower() == searchTerm;
    }

    public void SetResult(int rank, string name)
    {
        if (_name != null)
            return;

        Ranking = rank;
        _name = name;
    }

    public int Ranking { get; private set; }
}
```

For each of the following statements, select Yes if the statement is true. Otherwise, select No. Each correct selection is worth one point.

Answer Area

Description of Behavior	Yes	No
You can only set the player’s ranking once.	<input type="radio"/>	<input type="radio"/>
If you call the MatchName method, the code will throw an exception.	<input type="radio"/>	<input type="radio"/>
You can change Key from “player” to “racer”.	<input type="radio"/>	<input type="radio"/>

- A. Mastered
B. Not Mastered

Answer: A

Explanation:

Description of Behavior	Yes	No
You can only set the player’s ranking once.	<input checked="" type="radio"/>	<input type="radio"/>
If you call the MatchName method, the code will throw an exception.	<input checked="" type="radio"/>	<input type="radio"/>
You can change Key from “player” to “racer”.	<input type="radio"/>	<input checked="" type="radio"/>

NEW QUESTION 36

- (Topic 1)
You are designing a class for an application. You need to restrict the availability of the member variable accessCount to the base class and to any classes that are derived from the base class.
Which access modifier should you use?

- A. Internal
B. Protected
C. Private
D. Public

Answer: C

NEW QUESTION 38

- (Topic 1)
You are migrating several HTML pages to your website. Many of these pages contain HTML <center> and tags. Which XHTML document type declaration should you use?

A.	<!DOCTYPE HTML PUBLIC "-//W3C//DTD HTML 4.01 Transitional//EN" "http://www.w3.org/TR/html4/loose.dtd">
B.	<!DOCTYPE html>
C.	<!DOCTYPE html PUBLIC "-//W3C//DTD XHTML 1.0 Frameset//EN" "http://www.w3.org/TR/xhtml1/DTD/xhtml1-frameset.dtd">
D.	<!DOCTYPE html PUBLIC "-//W3C//DTD XHTML 1.0 Strict//EN" "http://www.w3.org/TR/xhtml1/DTD/xhtml1-strict.dtd">

- A. Option A
B. Option B
C. Option C
D. Option D

Answer: A

Explanation:

The <!DOCTYPE> declaration is not an HTML tag; it is an instruction to the web browser about what version of HTML the page is written in.

XHTML 1.0 Transitional

This DTD contains all HTML elements and attributes, INCLUDING presentational and deprecated elements (like font). Framesets are not allowed. The markup must also be written as well-formed XML.

<!DOCTYPE html PUBLIC "-//W3C//DTD XHTML 1.0 Transitional//EN" "http://www.w3.org/TR/xhtml1/DTD/xhtml1-transitional.dtd">

NEW QUESTION 39

HOTSPOT - (Topic 1)

For each of the following statements, select Yes if the statement is true. Otherwise, select No. Each correct selection is worth one point.

Answer Area

Description of Behavior	Yes	No
A queue's items are stored in the order they were added.	<input type="radio"/>	<input type="radio"/>
A queue is a first in, first out (FIFO) data structure.	<input type="radio"/>	<input type="radio"/>
A queue has a limited number of items.	<input type="radio"/>	<input type="radio"/>

- A. Mastered
B. Not Mastered

Answer: A

Explanation:

Answer Area

Description of Behavior	Yes	No
A queue's items are stored in the order they were added.	<input checked="" type="radio"/>	<input type="radio"/>
A queue is a first in, first out (FIFO) data structure.	<input checked="" type="radio"/>	<input type="radio"/>
A queue has a limited number of items.	<input type="radio"/>	<input checked="" type="radio"/>

NEW QUESTION 43

- (Topic 1)

Which programming language is characterized as client-side, dynamic and weakly typed?

- A. JavaScript
B. HTML
C. ASP.NET
D. C#

Answer: A

Explanation:

JavaScript is characterized as a dynamic, weakly typed, prototype-based language with first-class functions. It is primarily used in the form of client-side JavaScript for the development of dynamic websites.

NEW QUESTION 45

- (Topic 1)

This question requires that you evaluate the underlined text to determine if it is correct.

The benefit of using a transaction when updating multiple tables is that the update cannot fail.

Select the correct answer if the underlined text does not make the statement correct. Select "No change is needed" if the underlined text makes the statement correct.

- A. No change is needed
- B. succeeds or fails as a unit
- C. finishes as quickly as possible
- D. can be completed concurrently with other transactions

Answer: B

Explanation:

The benefit of using a transaction when updating multiple tables is that the update succeeds or fails as a unit.

NEW QUESTION 48

- (Topic 1)

How does a console-based application differ from a Windows Forms application?

- A. Console-based applications require the XNA Framework to run.
- B. Windows Forms applications do not provide a method for user input.
- C. Windows Forms applications can access network resources.
- D. Console-based applications do not display a graphical interface.

Answer: D

NEW QUESTION 49

- (Topic 1)

This question requires that you evaluate the underlined text to determine if it is correct. To improve performance, a SQL SELECT statement should use indexes. Select the correct answer if the underlined text does not make the statement correct. Select "No change is needed" if the underlined text makes the statement correct.

- A. No change is needed
- B. joins
- C. grouping
- D. ordering

Answer: A

NEW QUESTION 50

- (Topic 1)

You have a table named ITEMS with the following fields:

? ID (integer, primary key, auto generated)

? Description (text)

? Completed (Boolean)

You need to insert the following data in the table:

"Cheese", False

Which statement should you use?

- A. INSERT INTO ITEMS (ID, Description, Completed) VALUES (1, 'Cheese', 0)
- B. INSERT INTO ITEMS (Description, Completed) VALUES ('Cheese', 1)
- C. INSERT INTO ITEMS (10, Description, Completed) VALUES (NEWID(), 'Cheese', 6)
- D. INSERT INTO ITEMS (Description, Completed) VALUES ('Cheese', 0)

Answer: D

Explanation:

The string values TRUE and FALSE can be converted to bit values: TRUE is converted to 1 and FALSE is converted to 0.

Incorrect:

Not A, not C: ID is autogenerated and should not be specified.

NEW QUESTION 51

- (Topic 1)

You execute the following code.

```
for(int i = 0; i <= 10; i+= 2)
{
    Console.WriteLine("Hello");
}
```

How many times will the word Hello be printed?

- A. 5
- B. 6
- C. 10
- D. 12

Answer: B

NEW QUESTION 52

- (Topic 1)

The purpose of a constructor in a class is to:

- A. Initialize an object of that class.
- B. Release the resources that the class holds.
- C. Create a value type.
- D. Inherit from the base class.

Answer: A

Explanation:

Each value type has an implicit default constructor that initializes the default value of that type.

NEW QUESTION 53

- (Topic 1)

You are creating an application that presents users with a graphical interface. Users will run this application from remote computers. Some of the remote computers do not have the .NET Framework installed. Users do not have permissions to install software. Which type of application should you choose?

- A. Windows Forms
- B. Windows Service
- C. AS
- D. NET
- E. Console-based

Answer: C

NEW QUESTION 56

- (Topic 1)

This question requires that you evaluate the underlined text to determine if it is correct.

Internet Information Services (IIS) must be installed on the client computers in order to run a deployed ASP.NET application.

Select the correct answer if the underlined text does not make the statement correct. Select "No change is needed" if the underlined text makes the statement correct.

- A. No change is needed
- B. computer that hosts the application
- C. computer that you plan to deploy from
- D. Application Layer Gateway Service

Answer: B

Explanation:

Internet Information Services (IIS) must be installed on computer that hosts the application in order to run a deployed ASP.NET application.

NEW QUESTION 59

- (Topic 1)

The purpose of the Catch section in an exception handler is to:

- A. Break out of the error handler.
- B. Conclude the execution of the application.
- C. Execute code only when an exception is thrown.
- D. Execute code regardless of whether an exception is thrown.

Answer: C

NEW QUESTION 63

- (Topic 1)

You are creating an ASP. NET Web application.

Which line of code should you use to require a control to process on the computer that hosts the application?

- A. defaultRedirect="ServerPag
- B. htm"
- C. redirect="HostPag
- D. htm"
- E. AutoEventWireup="true"
- F. runat="server"

Answer: D

NEW QUESTION 64

- (Topic 1)

You are creating a Web application. The application will be consumed by client computers that run a variety of Web browsers.

Which term is used to describe the process of making the application available for client computers to access?

- A. Casting
- B. Deploying
- C. Hosting
- D. Virtualization

Answer: C

Explanation:

You host web applications.

NEW QUESTION 69

- (Topic 1)

A table named Student has columns named ID, Name, and Age. An index has been created on the ID column. What advantage does this index provide?

- A. It reorders the records alphabetically.
- B. It speeds up query execution.
- C. It minimizes storage requirements.
- D. It reorders the records numerically.

Answer: B

Explanation:

Faster to access an index table.

NEW QUESTION 71

- (Topic 1)

You are creating an application for a priority help desk center. The most recent call must be handled first.

Which data structure should you use?

- A. queue
- B. hashtable
- C. stack
- D. binary tree

Answer: C

Explanation:

In computer science, a stack is a particular kind of abstract data type or collection in which the principal (or only) operations on the collection are the addition of an entity to the collection, known as push and removal of an entity, known as pop. The relation between the push and pop operations is such that the stack is a Last-In-First-Out (LIFO)

data structure. In a LIFO data structure, the last element added to the structure must be the first one to be removed.

NEW QUESTION 73

- (Topic 1)

You are building a web application that enables international exchange students to schedule phone calls with their prospective schools.

The application allows students to indicate a preferred date and time for phone calls. Students may indicate no preferred time by leaving the date and time field empty. The application must support multiple time zones.

Which data type should you use to record the student's preferred date and time?

- A. uLong?
- B. DateTime
- C. SByte
- D. DateTimeOffset?

Answer: D

Explanation:

dateTimeOffset: Defines a date that is combined with a time of a day that has time zone awareness and is based on a 24-hour clock.

Incorrect:

DateTime: Defines a date that is combined with a time of day with fractional seconds that is based on a 24-hour clock.

sByte: The sbyte keyword indicates an integral type that stores values in the range of -128 to 127.

NEW QUESTION 77

- (Topic 1)

What is displayed when you attempt to access a Web service by using a Web browser?

- A. a listing of methods that are available in the Web service
- B. a directory listing of the Web service's application structure
- C. an error page explaining that you have accessed the Web service incorrectly
- D. a visual depiction of your preliminary connection to the Web service

Answer: A

Explanation:

The server, in response to this request, displays the Web service's HTML description page.

The Web service's HTML description page shows you all the Web service methods supported by a particular Web service. Link to the desired Web service method and enter the necessary parameters to test the method and see the XML response.

NEW QUESTION 81

HOTSPOT - (Topic 1)

For each of the following statements, select Yes if the statement is true. Otherwise, select No. Each correct selection is worth one point.

Answer Area

Description of Behavior	Yes	No
A linked list has a maximum of 100 nodes.	<input type="radio"/>	<input type="radio"/>
You can add new nodes anywhere in a linked list.	<input type="radio"/>	<input type="radio"/>
A linked list can be sorted.	<input type="radio"/>	<input type="radio"/>

- A. Mastered
B. Not Mastered

Answer: A

Explanation:

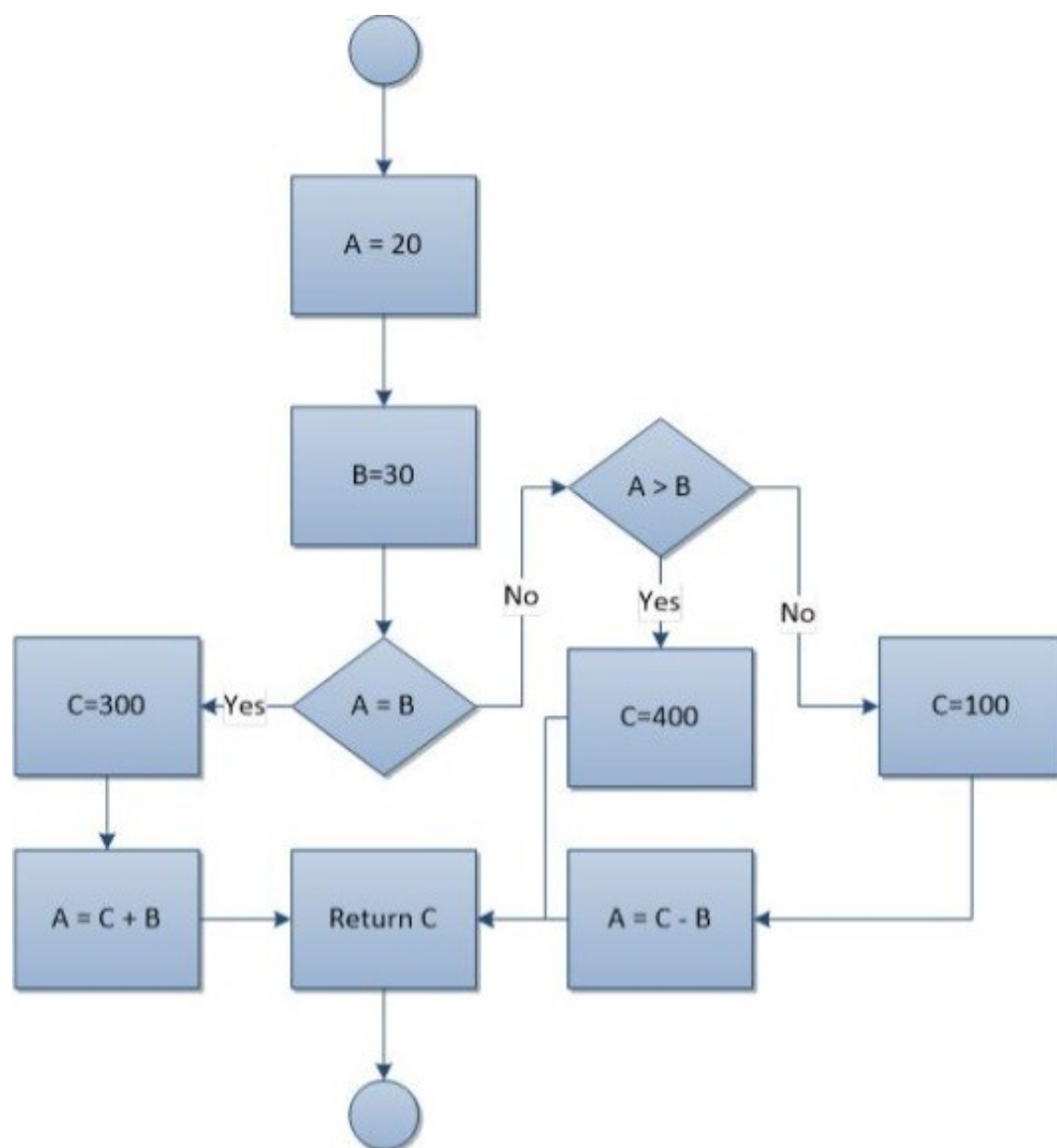
Answer Area

Description of Behavior	Yes	No
A linked list has a maximum of 100 nodes.	<input type="radio"/>	<input checked="" type="radio"/>
You can add new nodes anywhere in a linked list.	<input checked="" type="radio"/>	<input type="radio"/>
A linked list can be sorted.	<input checked="" type="radio"/>	<input type="radio"/>

NEW QUESTION 86

HOTSPOT - (Topic 1)

You have the following flowchart:



Use the drop-down menus to select the answer choice that completes each statement Each correct selection is worth one point.

Answer Area

The value that is returned is [answer choice].

The value of A is [answer choice].

Answer Area

The value that is returned is [answer choice].

20
 100
 300
 400

The value of A is [answer choice].

20
 30
 70
 330

- A. Mastered
- B. Not Mastered

Answer: A

Explanation:

Answer Area

The value that is returned is [answer choice].

▼

20

100

300

400

The value of A is [answer choice].

▼

20

30

70

330

NEW QUESTION 90

- (Topic 1)

Which language uses Data Definition Language (DDL) and Data Manipulation Language (DML)?

- A. SQL
- B. C++
- C. Pascal
- D. Java

Answer: A

Explanation:

SQL uses DDL and DML.

NEW QUESTION 91

- (Topic 1)

Which term is used to describe a class that inherits functionality from an existing class?

- A. Base class
- B. Inherited class
- C. Derived class
- D. Superclass

Answer: C

Explanation:

Classes (but not structs) support the concept of inheritance. A class that derives from another class (the base class) automatically contains all the public, protected, and internal members of the base class except its constructors and destructors.

NEW QUESTION 96

- (Topic 1)

Which three are valid SQL keywords? (Choose three.)

- A. GET
- B. WHAT
- C. FROM
- D. SELECT
- E. WHERE

Answer: CDE

Explanation:

Example: SELECT * FROM Customers WHERE Country='Mexico';

NEW QUESTION 99

HOTSPOT - (Topic 1)

You are developing a web application.

You need to create the following graphic by using Cascading Style Sheets (CSS):



Use the drop-down menus to select the answer choice that completes each statement. Each correct selection is worth one point.

Answer Area

For the CSS Style **background-image**, you should use the value
[answer choice]

For the CSS Style **border-radius**, you should use the value [answer choice]

Answer Area

For the CSS Style **background-image**, you should use the value
[answer choice]

linear-gradient(to top, green, black);
linear-gradient(to bottom, green, black);
radial-gradient(green, black);
repeating-linear-gradient(green, black);

For the CSS Style **border-radius**, you should use the value [answer choice]

10px;
10px, 10px, 10px;
inherit;
initial;

- A. Mastered
- B. Not Mastered

Answer: A

Explanation:

Answer Area

For the CSS Style **background-image**, you should use the value
[answer choice]

linear-gradient(to top, green, black);
linear-gradient(to bottom, green, black);
radial-gradient(green, black);
repeating-linear-gradient(green, black);

For the CSS Style **border-radius**, you should use the value [answer choice]

10px;
10px, 10px, 10px;
inherit;
initial;

NEW QUESTION 103

- (Topic 1)

You run the following code:

```
int a = 10;  
int b = 20;  
int c = 30;  
int result = 0;  
  
if (a <= b || c > a)  
    result = 10;  
else if (a <= b || c <= a)  
    result = 20;  
else  
    result = 30;
```

What is the value of result when the code has completed?

- A. 10
- B. 20
- C. 30

Answer: B

Explanation:

The conditional-OR operator (||) performs a logical-OR of its bool operands. If the first operand evaluates to true, the second operand isn't evaluated. If the first operand evaluates to false, the second operator determines whether the OR expression as a whole evaluates to true or false.

NEW QUESTION 108

- (Topic 1)

You execute the following code.


```
bool beakerFull = true;
bool flameOn = false;
int iResult = 0;
if (beakerFull)
{
    if (flameOn)
    {
        iResult = 1;
    }
    else
    {
        iResult = 2;
    }
}
else
{
    iResult = 3;
}
```

What will the variable result be?

- A. 1
- B. 2
- C. 3

Answer: C

NEW QUESTION 110

- (Topic 1)

You need to allow a consumer of a class to modify a private data member. What should you do?

- A. Assign a value directly to the data member.
- B. Provide a private function that assigns a value to the data member.
- C. Provide a public function that assigns a value to the data member.
- D. Create global variables in the class.

Answer: C

Explanation:

In this example (see below), the Employee class contains two private data members, name and salary. As private members, they cannot be accessed except by member methods. Public methods named GetName and Salary are added to allow controlled access to the private members. The name member is accessed by way of a public method, and the salary member is accessed by way of a public read-only property.

Note: The private keyword is a member access modifier. Private access is the least permissive access level. Private members are accessible only within the body of the class or the struct in which they are declared

Example:

```
class Employee2
{
    private string name = "FirstName, LastName"; private double salary = 100.0;
    public string GetName()
    {
        return name;
    }
    public double Salary
    {
        get { return salary; }
    }
}
```

NEW QUESTION 115

- (Topic 1)

What are two possible options for representing a Web application within Internet Information Services (IIS)? (Each correct answer presents a complete solution. Choose two.)

- A. Web site
- B. Web directory
- C. Virtual directory
- D. Application server
- E. Application directory

Answer: AC

Explanation:

* Create a Web Application

An application is a grouping of content at the root level of a Web site or a grouping of content in a separate folder under the Web site's root directory. When you add an application in IIS 7, you designate a directory as the application root, or starting point, for the application and then specify properties specific to that particular application, such as the application pool that the application will run in.

* You can make an Existing Virtual Directory a Web Application.

NEW QUESTION 118

- (Topic 2)

The purpose of a constructor in a class is to:

- A. Initialize an object of that class.
- B. Inherit from the base class.
- C. Release the resources that the class holds.
- D. Create a value type.

Answer: A

Explanation:

Each value type has an implicit default constructor that initializes the default value of that type.

NEW QUESTION 122

- (Topic 2)

In this XHTML code sample, what will cause an error?

```
<!DOCTYPE html PUBLIC "-//W3C//DTD XHTML 1.0 Strict//EN" "http://www.w3.org/TR/xhtml1/DTD/xhtml1-strict.dtd">
<html xmlns="http://www.w3.org/1999/xhtml" lang="en" xml:lang="en">
  <head>
    <title>The Title</title>
  </head>
  <body>
    <h1>This is a Heading.</h1>
    <p>This is a paragraph</p><br>
  </body>
</html>
```

- A. The line break tag is incorrectly formatted.
- B. The HTML tags do not read XHTML.
- C. The body tag is missing a background attribute,
- D. All tags are not in uppercase.

Answer: A

Explanation:

In XHTML, the
 tag must be properly closed, like this:
.

NEW QUESTION 127

- (Topic 2)

What are the three basic states that a Windows service can be in? (Choose three.)

- A. running
- B. starting
- C. halted
- D. stopped
- E. paused

Answer: BDE

Explanation:

A service can exist in one of three basic states: Running, Paused, or Stopped.

NEW QUESTION 131

- (Topic 2)

All objects in .NET inherit from which item?

- A. a reference type
- B. the System.Type class
- C. a value type
- D. the System.Object class

Answer: D

Explanation:

The System.Object class supports all classes in the .NET Framework class hierarchy and provides low-level services to derived classes. This is the ultimate base class of all classes in the .NET Framework; it is the root of the type hierarchy.

NEW QUESTION 136

HOTSPOT - (Topic 2)

You are creating a Windows Store application that uses the following gesture:



Use the drop-down menus to select the answer choice that completes each statement. Each correct selection is worth one point.

Answer Area

The gesture shown in the graphic is called [answer choice].

The surface displayed after the gesture has been completed is the [answer choice].

Answer Area

The gesture shown in the graphic is called [answer choice].

moving
pushing
sliding
swiping

The surface displayed after the gesture has been completed is the [answer choice].

app bar
canvas
charms
context menu

- A. Mastered
B. Not Mastered

Answer: A

Explanation:

Answer Area

The gesture shown in the graphic is called [answer choice].

moving
pushing
sliding
swiping

The surface displayed after the gesture has been completed is the [answer choice].

app bar
canvas
charms
context menu

NEW QUESTION 137

HOTSPOT - (Topic 2)

For each of the following statements, select Yes if the statement is true. Otherwise, select No. Each correct selection is worth one point.

Answer Area

Description of Behavior	Yes	No
A linked list has a maximum of 100 nodes.	<input type="radio"/>	<input type="radio"/>
You can add new nodes anywhere in a linked list.	<input type="radio"/>	<input type="radio"/>
A linked list can be sorted.	<input type="radio"/>	<input type="radio"/>

- A. Mastered
B. Not Mastered

Answer: A

Explanation:

Answer Area

Description of Behavior	Yes	No
A linked list has a maximum of 100 nodes.	<input type="radio"/>	<input checked="" type="radio"/>
You can add new nodes anywhere in a linked list.	<input checked="" type="radio"/>	<input type="radio"/>
A linked list can be sorted.	<input checked="" type="radio"/>	<input type="radio"/>

NEW QUESTION 138

- (Topic 2)

The Dog class and the Cat class inherit from the Animal class. The Animal class includes a breathe() method and a speak() method. If the speak() method is called from an object of

type Dog, the result is a bark. If the speak() method is called from an object of type Cat, the result is a meow.

Which term is used to describe this object-oriented concept?

- A. multiple inheritance
- B. encapsulation
- C. polymorphism
- D. data hiding

Answer: C

Explanation:

Polymorphism is often referred to as the third pillar of object-oriented programming, after encapsulation and inheritance. Polymorphism is a Greek word that means "many-shaped" and it has two distinct aspects:

* At run time, objects of a derived class may be treated as objects of a base class in places such as method parameters and collections or arrays. When this occurs, the object's declared type is no longer identical to its run-time type.

* Base classes may define and implement virtual methods, and derived classes can override them, which means they provide their own definition and implementation. At run-time, when client code calls the method, the CLR looks up the run-time type of the object, and invokes that override of the virtual method. Thus in your source code you can call a method on a base class, and cause a derived class's version of the method to be executed.

NEW QUESTION 142

- (Topic 2)

You are creating an application for computers that run Windows XP or later. This application must run after the computer starts. The user must not be aware that the application is running.

The application performs tasks that require permissions that the logged-in user does not have.

Which type of application allows this behavior?

- A. Windows Forms application
- B. DOS batch file
- C. Terminate-and-stay-resident (TSR) program
- D. Windows Service application

Answer: D

NEW QUESTION 146

- (Topic 2)

What are two advantages of normalization in a database? (Choose two.)

- A. reduces schema limitations
- B. minimizes impact of data corruption
- C. decreases space used on disk
- D. prevents data inconsistencies

Answer: CD

NEW QUESTION 148

- (Topic 2)

You need to create a property in a class. Consumers of the class must be able to read the values of the property. Consumers of the class must be prevented from writing values to the property.

Which property procedure should you include?

- A. Set
- B. Get
- C. Let
- D. Return

Answer: B

NEW QUESTION 153

- (Topic 2)

This question requires that you evaluate the underlined text to determine if it is correct.

A piece of text that is 4096 bytes or smaller and is stored on and retrieved from the client computer to maintain state is known as a ViewState.

Select the correct answer if the underlined text does not make the statement correct. Select "No change is needed" if the underlined text makes the statement correct.

- A. No change is needed
- B. cookie
- C. form post
- D. QueryString

Answer: B

Explanation:

A piece of text that is 4096 bytes or smaller and is stored on and retrieved from the client computer to maintain state is known as a Cookie.

NEW QUESTION 158

HOTSPOT - (Topic 2)

For each of the following statements, select Yes if the statement is true. Otherwise, select No. Each correct selection is worth one point.

Answer Area

Description of Behavior	Yes	No
The "is a" relationship between classes refers to composition.	<input type="radio"/>	<input type="radio"/>
The "has a" relationship between classes refers to inheritance.	<input type="radio"/>	<input type="radio"/>
Both composition and inheritance allow you to create sub-objects.	<input type="radio"/>	<input type="radio"/>

- A. Mastered
- B. Not Mastered

Answer: A

Explanation:

Answer Area

Description of Behavior	Yes	No
The "is a" relationship between classes refers to composition.	<input type="radio"/>	<input checked="" type="radio"/>
The "has a" relationship between classes refers to inheritance.	<input type="radio"/>	<input checked="" type="radio"/>
Both composition and inheritance allow you to create sub-objects.	<input checked="" type="radio"/>	<input type="radio"/>

NEW QUESTION 163

- (Topic 2)

You are creating a database for a student directory. The Students table contains the following fields:

```
firstName
lastName
emailAddress
telephoneNumber
```

Which statement will retrieve only the first name, last name, and telephone number for every student listed in the directory?

- A. `SELECT firstName, lastName, telephoneNumber FROM Students`
- B. `WHERE Students SELECT firstName, lastName, telephoneNumber`
- C. `WHERE Students SELECT *`
- D. `SELECT firstName, lastName, telephoneNumber IN Students`
- E. `SELECT * FROM Students`

- A. Option A
B. Option B
C. Option C
D. Option D

Answer: A

Explanation:

Use SELECT??FROM and list the fields you want to retrieve.

NEW QUESTION 164

- (Topic 2)

This question requires that you evaluate the underlined text to determine if it is correct.

The process of transforming compiled C# code into an XML string for a web service is known as deserialization.

Select the correct answer if the underlined text does not make the statement correct. Select "No change is needed" if the underlined text makes the statement correct.

- A. No change is needed
B. serialization
C. decoding
D. encoding

Answer: B

Explanation:

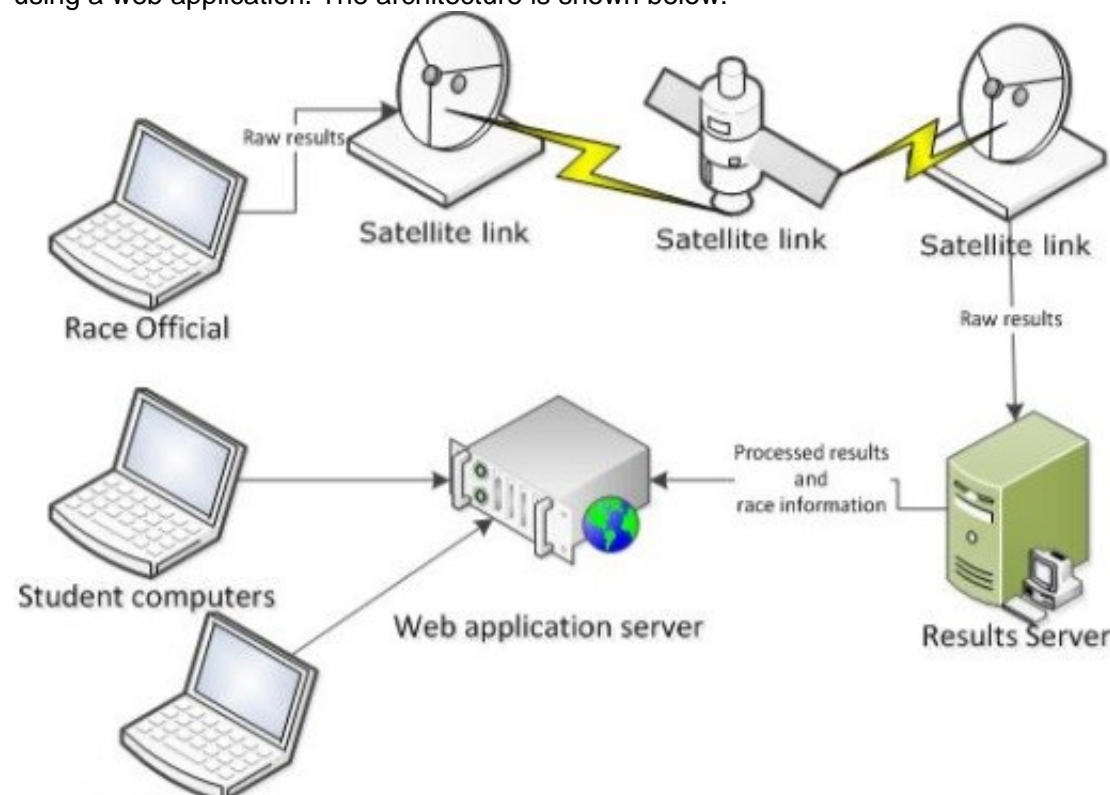
Serialization is the process of converting an object into a stream of bytes in order to store the object or transmit it to memory, a database, or a file. Its main purpose is to save the state of an object in order to be able to recreate it when needed.

Serialization allows the developer to save the state of an object and recreate it as needed, providing storage of objects as well as data exchange. Through serialization, a developer can perform actions like sending the object to a remote application by means of a Web Service, passing an object from one domain to another, passing an object through a firewall as an XML string, or maintaining security or user-specific information across applications.

NEW QUESTION 165

HOTSPOT - (Topic 2)

You are reviewing the architecture for a system that allows race officials to enter the results of 5K race results. The results are then made available to students using a web application. The architecture is shown below:



Use the drop-down menus to select the answer choice that answers each question. Each correct selection is worth one point.

Answer Area

To minimize the time between when a race official records the results and when the results are available on the web, which part of the system is critical?

To increase the number of students that can access race results, what element should be added to the system?

Answer Area

To minimize the time between when a race official records the results and when the results are available on the web, which part of the system is critical?

satellite link
student computer
race official computer
web application server

To increase the number of students that can access race results, what element should be added to the system?

satellite link
race officials
results servers
web application servers

- A. Mastered
- B. Not Mastered

Answer: A

Explanation:

Answer Area

To minimize the time between when a race official records the results and when the results are available on the web, which part of the system is critical?

satellite link
student computer
race official computer
web application server

To increase the number of students that can access race results, what element should be added to the system?

satellite link
race officials
results servers
web application servers

NEW QUESTION 169

- (Topic 2)

How many parameters can a default constructor have?

- A. 1
- B. 2
- C. 3 or more

Answer: :A

Explanation:

If a class contains no instance constructor declarations, a default instance constructor is automatically provided. That default constructor simply invokes the parameterless constructor of the direct base class.

NEW QUESTION 173

HOTSPOT - (Topic 2)

You are developing a web application.

You need to create the following graphic by using Cascading Style Sheets (CSS):



Use the drop-down menus to select the answer choice that completes each statement. Each correct selection is worth one point.

Answer Area

For the CSS Style **background-image**, you should use the value [answer choice]

For the CSS Style **border-radius**, you should use the value [answer choice]

Answer Area

For the CSS Style **background-image**, you should use the value
[answer choice]

linear-gradient(to top, green, black);
linear-gradient(to bottom, green, black);
radial-gradient(green, black);
repeating-linear-gradient(green, black);

For the CSS Style **border-radius**, you should use the value **[answer choice]**

10px;
10px, 10px, 10px;
inherit;
initial;

- A. Mastered
- B. Not Mastered

Answer: A

Explanation:

Answer Area

For the CSS Style **background-image**, you should use the value
[answer choice]

linear-gradient(to top, green, black);
linear-gradient(to bottom, green, black);
radial-gradient(green, black);
repeating-linear-gradient(green, black);

For the CSS Style **border-radius**, you should use the value **[answer choice]**

10px;
10px, 10px, 10px;
inherit;
initial;

NEW QUESTION 178

- (Topic 2)

You need to group all the style settings into a separate file that can be applied to all the pages in a Web application. What should you do?

- A. Use a Cascading Style Sheet (CSS).
- B. Use an Extensible Markup Language (XML) schema.
- C. Use inline styles.
- D. Use a WebKit.

Answer: A

Explanation:

Cascading Style Sheets (CSS) is a style sheet language used for describing the look and formatting of a document written in a markup language.

CSS is designed primarily to enable the separation of document content from document presentation, including elements such as the layout, colors, and fonts.

NEW QUESTION 179

- (Topic 2)

This question requires that you evaluate the underlined text to determine if it is correct.

A table whose attributes depend only on the primary key must be at least second normal form.

Select the correct answer if the underlined text does not make the statement correct. Select "No change is needed" if the underlined text makes the statement correct.

- A. No change is needed
- B. first
- C. third
- D. fourth

Answer: A

Explanation:

2nd Normal Form Definition

A database is in second normal form if it satisfies the following conditions: It is in first normal form

All non-key attributes are fully functional dependent on the primary key

NEW QUESTION 184

- (Topic 2)

You are developing an application that tracks tennis matches. A match is represented by the following class:

```
Public Class Match
    Public Property Location As String
    Public Property MatchDate As Date?

    Public Sub New()
        Location = "unknown"
    End Sub
End Class
```

A match is created by using the following code:

```
Dim match = New Match With
    {.Location = "north region",
    .MatchDate = New DateTime(2013, 4, 14)}
```

How many times is the Location property on the newly created Match class assigned?

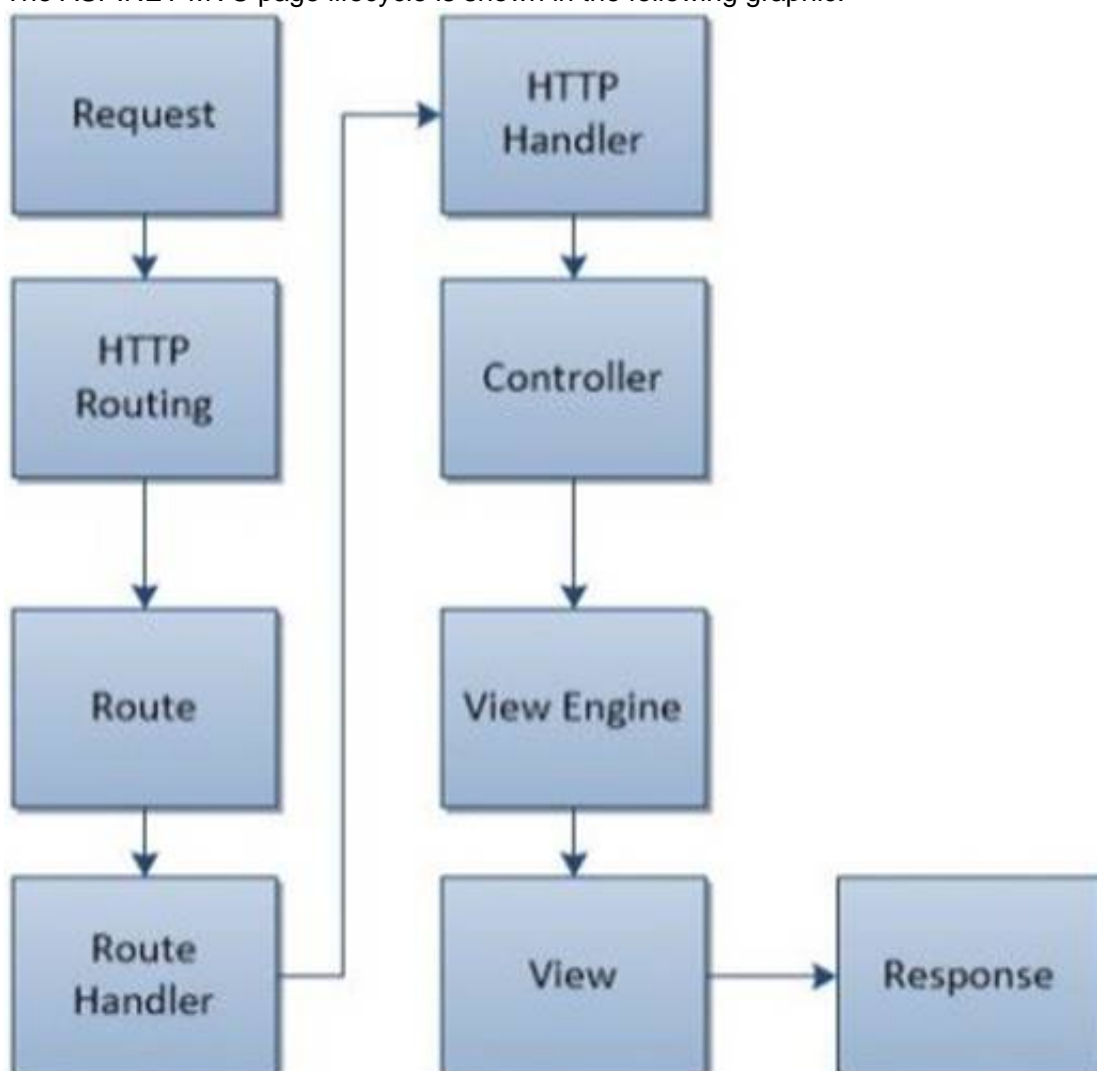
- A. 1
- B. 2
- C. 3

Answer: C

NEW QUESTION 188

HOTSPOT - (Topic 2)

The ASP.NET MVC page lifecycle is shown in the following graphic:



Use the drop-down menus to select the answer choice that completes each statement Each correct selection is worth one point.

Answer Area

The [answer choice] event determines which action method is needed and then calls that method.

The URL pattern is matched during the [answer choice] event.

Answer Area

The **[answer choice]** event determines which action method is needed and then calls that method.

▼

View
Route
Controller
HTTP Handler

The URL pattern is matched during the **[answer choice]** event.

▼

View
Route
Controller
HTTP Handler

- A. Mastered
B. Not Mastered

Answer: A

Explanation:

Answer Area

The **[answer choice]** event determines which action method is needed and then calls that method.

▼

View
Route
Controller
HTTP Handler

The URL pattern is matched during the **[answer choice]** event.

▼

View
Route
Controller
HTTP Handler

NEW QUESTION 189

- (Topic 2)

You have a Microsoft ASP.NET web application.

You need to store a value that can be shared across users on the server.

Which type of state management should you use?

- A. session
B. application
C. cookies
D. ViewState

Answer: B

Explanation:

Application state is a data repository available to all classes in an ASP.NET application. Application state is stored in memory on the server and is faster than storing and retrieving information in a database. Unlike session state, which is specific to a single user session, application state applies to all users and sessions. Therefore, application state is a useful place to store small amounts of often-used data that does not change from one user to another.

Incorrect:

not A: Session State contains information that is pertaining to a specific session (by a particular client/browser/machine) with the server. It's a way to track what the user is doing on the site.. across multiple pages...amid the statelessness of the Web. e.g. the contents of a particular user's shopping cart is session data. Cookies can be used for session state. Not D: Viewstate is a state management technique in asp.net. ASP.NET Viewstate is preserving the data between the requests or postbacks and stored in hidden fields on the page.

NEW QUESTION 191

- (Topic 2)

What are two possible options for representing a Web application within Internet Information Services (IIS)? (Each correct answer presents a complete solution. Choose two.)

- A. web site
B. virtual directory
C. application directory
D. application server
E. Web directory

Answer: AB

Explanation:

* Create a Web Application

An application is a grouping of content at the root level of a Web site or a grouping of content in a separate folder under the Web site's root directory. When you add an application in IIS 7, you designate a directory as the application root, or starting point, for the application and then specify properties specific to that particular application, such as the application pool that the application will run in.

* You can make an Existing Virtual Directory a Web Application.

NEW QUESTION 195

- (Topic 2)

This question requires that you evaluate the underlined text to determine if it is correct.

When a base class declares a method as virtual, the method is hidden from implementation by a derived class.

Select the correct answer if the underlined text does not make the statement correct. Select "No change is needed" if the underlined text makes the statement correct.

- A. No change is needed
- B. can be overridden with its own implementation by a derived class
- C. must be overridden in any non-abstract class that directly inherits from that class
- D. cannot be overridden with its own implementation by a derived class

Answer: B

NEW QUESTION 200

- (Topic 2)

Which language was designed for the primary purpose of querying data, modifying data, and managing databases in a Relational Database Management System?

- A. C + +
- B. Java
- C. SQL
- D. Visual Basic

Answer: C

Explanation:

SQL is a special-purpose programming language designed for managing data held in a relational database management system (RDBMS).

NEW QUESTION 205

- (Topic 2)

You are creating an ASP. NET Web application.

Which line of code should you use to require a control to process on the computer that hosts the application?

- A. runat= "server"
- B. redirect*="HostPag
- C. htm"
- D. AutoEventWireup="true"
- E. defaultRedirect="ServerPag
- F. htm"

Answer: A

NEW QUESTION 206

HOTSPOT - (Topic 2)

For each of the following statements, select Yes if the statement is true. Otherwise, select No. Each correct selection is worth one point.

Answer Area

Statement	Yes	No
Within an XHTML document, the XHTML DOCTYPE declaration is mandatory.	<input type="radio"/>	<input type="radio"/>
Within an XHTML document, the XML namespace attribute in the html tag is mandatory.	<input type="radio"/>	<input type="radio"/>
Within an XHTML document, the html, head, title, and body tags are mandatory.	<input type="radio"/>	<input type="radio"/>

- A. Mastered
- B. Not Mastered

Answer: A

Explanation:

Answer Area

Statement	Yes	No
Within an XHTML document, the XHTML DOCTYPE declaration is mandatory.	<input checked="" type="radio"/>	<input type="radio"/>
Within an XHTML document, the XML namespace attribute in the html tag is mandatory.	<input checked="" type="radio"/>	<input type="radio"/>
Within an XHTML document, the html, head, title, and body tags are mandatory.	<input checked="" type="radio"/>	<input type="radio"/>

NEW QUESTION 210

- (Topic 2)

This question requires that you evaluate the underlined text to determine if it is correct. The Response.Redirect method is used to transfer processing of the current page to a new

page, and then return processing back to the calling page once processing of the new page has completed.

Select the correct answer if the underlined text does not make the statement correct. Select "No change is needed" if the underlined text makes the statement correct.

- A. No change is needed
- B. Server.Transfer method
- C. Server.Execute method
- D. meta http-equiv="refresh" tag

Answer: C

Explanation:

The Execute method calls an .asp file, and processes it as if it were part of the calling ASP script. The Execute method is similar to a procedure call in many programming languages.

Incorrect:

* Response.Redirect Method

The Redirect method causes the browser to redirect the client to a different URL.

* The Server.Transfer method sends all of the information that has been assembled for processing by one .asp file to a second .asp file.

NEW QUESTION 214

- (Topic 2)

You create an application that uses Simple Object Access Protocol (SOAP).

Which technology provides information about the application's functionality to other applications?

- A. Web Service Description Language (WSDL)
- B. Common Intermediate Language (CIL)
- C. Extensible Application Markup Language (XAML)
- D. Universal Description, Discovery, and Integration (UDDI)

Answer: A

Explanation:

WSDL is often used in combination with SOAP and an XML Schema to provide Web services over the Internet. A client program connecting to a Web service can read the WSDL file to determine what operations are available on the server. Any special datatypes used are embedded in the WSDL file in the form of XML Schema. The client can then use SOAP to actually call one of the operations listed in the WSDL file using for example XML over HTTP.

NEW QUESTION 216

- (Topic 2)

You are creating a variable for an application.

You need to store data that has the following characteristics in this variable:

? Consists of numbers and characters

? Includes numbers that have decimal points

Which data type should you use?

- A. Decimal
- B. Char
- C. String
- D. Single

Answer: C

Explanation:

Need a string to store characters.

NEW QUESTION 217

- (Topic 2)

What is displayed when you attempt to access a Web service by using a Web browser?

- A. a visual depiction of your preliminary connection to the Web service
- B. a listing of methods that are available in the Web service
- C. an error page explaining that you have accessed the Web service incorrectly
- D. a directory listing of the Web services application structure

Answer: B

Explanation:

The server, in response to this request, displays the Web service's HTML description page.

The Web service's HTML description page shows you all the Web service methods supported by a particular Web service. Link to the desired Web service method and enter the necessary parameters to test the method and see the XML response.

NEW QUESTION 219

- (Topic 2)

This question requires that you evaluate the underlined text to determine if it is correct.

The duplication of code so that modifications can happen in parallel is known as separating.

Select the correct answer if the underlined text does not make the statement correct. Select "No change is needed" if the underlined text makes the statement correct.

- A. No change is needed
- B. branching
- C. merging
- D. splitting

Answer: B

Explanation:

When you develop applications in a team-based environment, you might need to access multiple versions of your application at the same time. If you copy one or more areas of your code into a separate branch, you can update one copy while you preserve the original version, or you can update both branches to meet different needs. Depending on your development goals, you can later merge the changes from multiple branches to create a single version that reflects all changes

NEW QUESTION 223

- (Topic 2)

Your database administrators will not allow you to write SQL code in your application. How should you retrieve data in your application?

- A. Reference an index in the database.
- B. Call a stored procedure.
- C. Query a database view.
- D. Script a SELECT statement to a file.

Answer: B

Explanation:

The SQL will only be inside the stored procedure.

NEW QUESTION 228

- (Topic 2)

This question requires that you evaluate the underlined text to determine if it is correct. To improve performance, a SQL SELECT statement should use indexes.

Select the correct answer if the underlined text does not make the statement correct. Select "No change is needed" if the underlined text makes the statement correct.

- A. No change is needed
- B. joins
- C. grouping
- D. ordering

Answer: A

NEW QUESTION 232

- (Topic 2)

You have a stack that contains integer values. The values are pushed onto the stack in the following order: 2,4,6,8. The following sequence of operations is executed:

Pop

Push 3 Pop Push 4

Push 6

Push 7 Pop Pop Pop

What is the value of the top element after these operations are executed?

- A. 2
- B. 3
- C. 6
- D. 7

Answer: B

NEW QUESTION 233

- (Topic 2)

When a web service is referenced from a client application in Microsoft Visual Studio, which two items are created? (Choose two.)

- A. a stub
- B. a proxy
- C. a.disco file
- D. a.wsdlfile

Answer: CD

Explanation:

A .wsdl file that references the Web service is created, together with supporting files, such as discovery (.disco and .discomap) files, that include information about where the Web service is located.

NEW QUESTION 235

- (Topic 2)

Which three are valid SQL keywords? (Choose three.)

- A. GET
- B. FROM
- C. SELECT
- D. WHAT
- E. WHERE

Answer: BCE

Explanation:

Example:

```
SELECT * FROM CustomersWHERE Country='Mexico';
```

NEW QUESTION 236

- (Topic 2)

You need to allow a consumer of a class to modify a private data member. What should you do?

- A. Provide a public function that assigns a value to the data member.
- B. Create global variables in the class.
- C. Assign a value directly to the data member.
- D. Provide a private function that assigns a value to the data member.

Answer: A

Explanation:

In this example (see below), the Employee class contains two private data members, name and salary. As private members, they cannot be accessed except by member methods. Public methods named GetName and Salary are added to allow controlled access to the private members. The name member is accessed by way of a public method, and the salary member is accessed by way of a public read-only property.

Note: The private keyword is a member access modifier. Private access is the least permissive access level. Private members are accessible only within the body of the class or the struct in which they are declared

Example:

```
class Employee2
{
private string name = "FirstName, LastName"; private double salary = 100.0;
public string GetName()
{
return name;
}
public double Salary
{
get { return salary; }
}
}
```

NEW QUESTION 237

- (Topic 2)

You are creating an application that presents the user with a Windows Form. You need to configure the application to display a message box to confirm that the user wants to close the form.

Which event should you handle?

- A. Deactivate
- B. FormClosed
- C. Leave
- D. FormClosing

Answer: D

Explanation:

The Closing event occurs as the form is being closed.

NEW QUESTION 242

- (Topic 2)

You need to create a stored procedure that passes in a person's name and age. Which statement should you use to create the stored procedure?

A. `UPDATE PROCEDURE StoreData
@UserName nvarchar(255),
@Age int`

B. `CREATE PROCEDURE StoreData
@UserName char,
@Age double`

C. `CREATE PROCEDURE StoreData
@UserName nvarchar(255),
@Age int`

D. `CREATE PROCEDURE StoreData (@UserName, @Age)`

A. Option A

B. Option B

C. Option C

D. Option D

Answer: C

Explanation:

Example (nvarchar and int are best here):

The following example creates a stored procedure that returns information for a specific

employee by passing values for the employee's first name and last name. This procedure accepts only exact matches for the parameters passed.

```
CREATE PROCEDURE HumanResources.uspGetEmployees
```

```
@LastName nvarchar(50),
```

```
@FirstName nvarchar(50) AS
```

```
SET NOCOUNT ON;
```

```
SELECT FirstName, LastName, JobTitle, Department FROM HumanResources.vEmployeeDepartment
```

```
WHERE FirstName = @FirstName AND LastName = @LastName; GO
```

NEW QUESTION 247

- (Topic 2)

You have a SQL Server database named MyDB that uses SQL Server Authentication. Which connection string should you use to connect to MyDB?

A. Data Source=MyDB; Integrated Security=SSPf; Initial Catalog=Sales

B. Data Source=MyDB; Trusted_Connection=True; MultipleActiveResultSets=True; Initial Catalog=Sales

C. Data Source=MyDB; Integrated Security=True; Initial Catalog=Sales

D. Data Source=MyDB; UserID=username; Password=P@sswOrd; Initial Catalog=Sales

Answer: D

Explanation:

Integrated Security Integrated Security is by default set to false.

When false, User ID and Password are specified in the connection.

Incorrect:

not C: Windows Authentication (Integrated Security = true) remains the most secure way to log in to a SQL Server database.

NEW QUESTION 252

- (Topic 2)

Which service can host an ASP.NET application?

A. Remote Desktop Services

B. Internet Information Services

C. web Services

D. Cluster Services

Answer: :B

Explanation:

Using Internet Information Services (IIS) Manager, you can create a local Web site for hosting an ASP.NET Web application.

NEW QUESTION 256

.....

Thank You for Trying Our Product

* 100% Pass or Money Back

All our products come with a 90-day Money Back Guarantee.

* One year free update

You can enjoy free update one year. 24x7 online support.

* Trusted by Millions

We currently serve more than 30,000,000 customers.

* Shop Securely

All transactions are protected by VeriSign!

100% Pass Your 98-361 Exam with Our Prep Materials Via below:

<https://www.certleader.com/98-361-dumps.html>