

DOP-C01 Dumps

AWS Certified DevOps Engineer- Professional

<https://www.certleader.com/DOP-C01-dumps.html>



NEW QUESTION 1

You currently have the following setup in AWS

- 1) An Elastic Load Balancer
- 2) Auto Scaling Group which launches EC2 Instances
- 3) AMIs with your code pre-installed

You want to deploy the updates of your app to only a certain number of users. You want to have a cost-effective solution. You should also be able to revert back quickly. Which of the below solutions is the most feasible one?

- A. Create a second ELB, and a new Auto Scaling Group assigned a new Launch Configuratio
- B. Create a new AMI with the updated ap
- C. Use Route53 Weighted Round Robin records to adjust the proportion of traffic hitting the two ELBs.
- D. Create new AM Is with the new ap
- E. Then use the new EC2 instances in half proportion to the older instances.
- F. Redeploy with AWS Elastic Beanstalk and Elastic Beanstalk version
- G. Use Route 53 Weighted Round Robin records to adjust the proportion of traffic hitting the two ELBs
- H. Create a full second stack of instances, cut the DNS over to the new stack of instances, and change the DNS back if a rollback is needed.

Answer: A

Explanation:

The Weighted Routing policy of Route53 can be used to direct a proportion of traffic to your application. The best option is to create a second CLB, attach the new Autoscaling Group and then use Route53 to divert the traffic.

Option B is wrong because just having EC2 instances running with the new code will not help.

Option C is wrong because Clastic beanstalk is good for development environments, and also there is no mention of having 2 environments where environment url's can be swapped.

Option D is wrong because you still need Route53 to split the traffic.

For more information on Route53 routing policies, please refer to the below link: <http://docs.aws.amazon.com/Route53/latest/DeveloperGuide/routing-policy.html>

NEW QUESTION 2

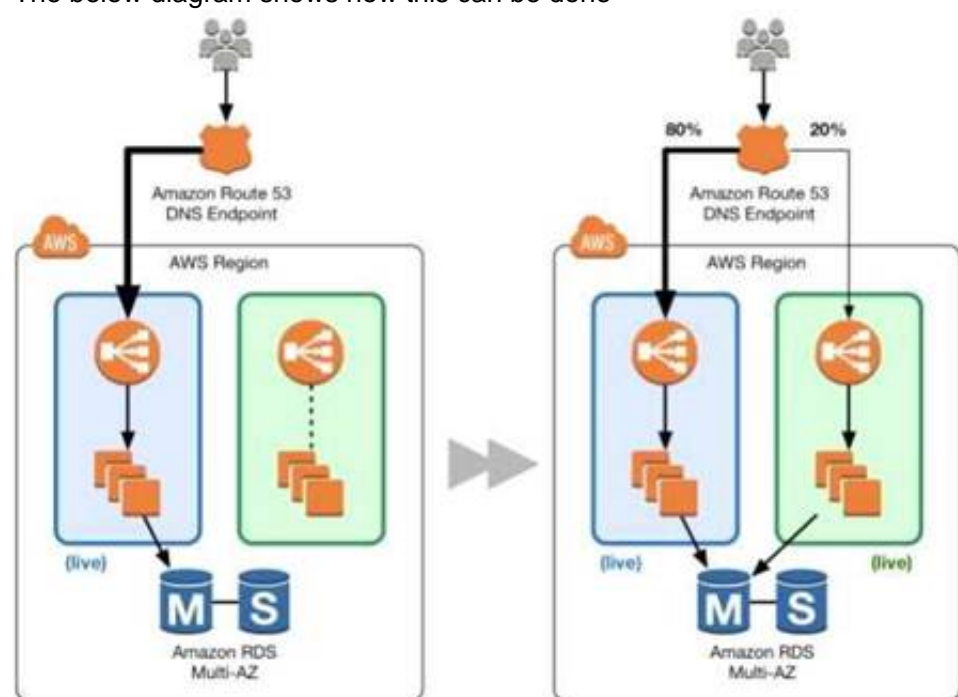
Your application is currently running on Amazon EC2 instances behind a load balancer. Your management has decided to use a Blue/Green deployment strategy. How should you implement this for each deployment?

- A. Set up Amazon Route 53 health checks to fail over from any Amazon EC2 instance that is currently being deployed to.
- B. Using AWS CloudFormation, create a test stack for validating the code, and then deploy the code to each production Amazon EC2 instance.
- C. Create a new load balancer with new Amazon EC2 instances, carry out the deployment, and then switch DNS over to the new load balancer using Amazon Route 53 after testing.
- D. Launch more Amazon EC2 instances to ensure high availability, de-register each Amazon EC2 instance from the load balancer, upgrade it, and test it, and then register it again with the load balancer.

Answer: C

Explanation:

The below diagram shows how this can be done



- 1) First create a new ELB which will be used to point to the new production changes.
- 2) Use the Weighted Route policy for Route53 to distribute the traffic to the 2 ELB's based on a 80- 20% traffic scenario. This is the normal case, the % can be changed based on the requirement.
- 3) Finally when all changes have been tested, Route53 can be set to 100% for the new ELB.

Option A is incorrect because this is a failover scenario and cannot be used for Blue green deployments. In Blue Green deployments, you need to have 2 environments running side by side. Option B is incorrect, because you need to have a production stack with the changes which will run side by side.

Option D is incorrect because this is not a blue green deployment scenario. You cannot control which users will go the new EC2 instances.

For more information on blue green deployments, please refer to the below document link: from AWS

https://dOawsstatic.com/whitepapers/AWS_Blue_Green_Deployments.pdf

NEW QUESTION 3

You have deployed an application to AWS which makes use of Autoscaling to launch new instances. You now want to change the instance type for the new instances. Which of the following is one of the action items to achieve this deployment?

- A. Use Elastic Beanstalk to deploy the new application with the new instance type
- B. Use Cloudformation to deploy the new application with the new instance type
- C. Create a new launch configuration with the new instance type
- D. Create new EC2 instances with the new instance type and attach it to the Autoscaling Group

Answer: C

Explanation:

The ideal way is to create a new launch configuration, attach it to the existing Auto Scaling group, and terminate the running instances.

Option A is invalid because Elastic beanstalk cannot launch new instances on demand. Since the current scenario requires Autoscaling, this is not the ideal option

Option B is invalid because this will be a maintenance overhead, since you just have an Autoscaling Group. There is no need to create a whole Cloudformation template for this.

Option D is invalid because Autoscaling Group will still launch EC2 instances with the older launch configuration

For more information on Autoscaling Launch configuration, please refer to the below document link: from AWS

<http://docs.aws.amazon.com/autoscaling/latest/userguide/launchConfiguration.html>

NEW QUESTION 4

Your application stores sensitive information on an EBS volume attached to your EC2 instance. How can you protect your information? Choose two answers from the options given below

- A. Unmount the EBS volume, take a snapshot and encrypt the snapshot
- B. Re-mount the Amazon EBS volume
- C. It is not possible to encrypt an EBS volume, you must use a lifecycle policy to transfer data to S3 forencryption.
- D. Copy the unencrypted snapshot and check the box to encrypt the new snapshot
- E. Volumes restored from this encrypted snapshot will also be encrypted.
- F. Create and mount a new, encrypted Amazon EBS volume
- G. Move the data to the new volume
- H. Delete the old Amazon EBS volume

Answer: CD

Explanation:

These steps are given in the AWS documentation

To migrate data between encrypted and unencrypted volumes

- 1) Create your destination volume (encrypted or unencrypted, depending on your need).
- 2) Attach the destination volume to the instance that hosts the data to migrate.
- 3) Make the destination volume available by following the procedures in Making an Amazon EBS Volume Available for Use. For Linux instances, you can create a mount point at /mnt/destination and mount the destination volume there.
- 4) Copy the data from your source directory to the destination volume. It may be most convenient to use a bulk-copy utility for this.

To encrypt a volume's data by means of snapshot copying

- 1) Create a snapshot of your unencrypted EBS volume. This snapshot is also unencrypted.
- 2) Copy the snapshot while applying encryption parameters. The resulting target snapshot is encrypted.
- 3) Restore the encrypted snapshot to a new volume, which is also encrypted.

For more information on EBS Encryption, please refer to the below document link: from AWS

<http://docs.aws.amazon.com/AWSEC2/latest/UserGuide/EBSEncryption.html>

NEW QUESTION 5

You have an ELB setup in AWS with EC2 instances running behind it. You have been requested to monitor the incoming connections to the ELB. Which of the below options can suffice this requirement?

- A. UseAWSCloudTrail with your load balancer
- B. Enable access logs on the load balancer
- C. Use a CloudWatch Logs Agent
- D. Create a custom metric CloudWatch filter on your load balancer

Answer: B

Explanation:

Elastic Load Balancing provides access logs that capture detailed information about requests sent to your load balancer. Each log contains information such as the

time the request was received, the client's IP address, latencies, request paths, and server responses.

You can use these access logs to analyze traffic patterns and to troubleshoot issues.

Option A is invalid because this service will monitor all AWS services Option C and D are invalid since CLB already provides a logging feature.

For more information on ELB access logs, please refer to the below document link: from AWS

<http://docs.aws.amazon.com/elasticloadbalancing/latest/classic/access-log-collection.html>

NEW QUESTION 6

You are responsible for your company's large multi-tiered Windows-based web application running on Amazon EC2 instances situated behind a load balancer.

While reviewing metrics, you've started noticing an upwards trend for slow customer page load time. Your manager has asked you to come up with a solution to ensure that customer load time is not affected by too many requests per second. Which technique would you use to solve this issue?

- A. Re-deploy your infrastructure using an AWS CloudFormation template
- B. Configure Elastic Load Balancing health checks to initiate a new AWS CloudFormation stack when health checks return failed.
- C. Re-deploy your infrastructure using an AWS CloudFormation template
- D. Spin up a second AWS CloudFormation stack
- E. Configure Elastic Load Balancing SpillOver functionality to spill over any slow connections to the second AWS CloudFormation stack.
- F. Re-deploy your infrastructure using AWS CloudFormation, Elastic Beanstalk, and Auto Scaling
- G. Setup your Auto Scaling group policies to scale based on the number of requests per second as well as the current customer load time
- H. ➤/D- Re-deploy your application using an Auto Scaling template
- I. Configure the Auto Scaling template to spin up a new Elastic Beanstalk application when the customer load time surpasses your threshold.

Answer: C

Explanation:

Auto Scaling helps you ensure that you have the correct number of Amazon EC2 instances available to handle the load for your application. You create collections of EC2 instances, called Auto Scaling groups. You can specify the minimum number of instances in each Auto Scaling group, and Auto Scaling ensures that your group never goes below this size. You can specify the maximum number of instances in each Auto Scaling group, and Auto Scaling ensures that your group never goes above this size. If you specify the desired capacity, either when you create the group or at any time thereafter, Auto Scaling ensures that your group has this many instances. If you specify scaling policies, then Auto Scaling can launch or terminate instances as demand on your application increases or decreases. Option A and B are invalid because Autoscaling is required to solve the issue to ensure the application can handle high traffic loads. Option D is invalid because there is no Autoscaling template. For more information on Autoscaling, please refer to the below document link: from AWS <http://docs.aws.amazon.com/autoscaling/latest/userguide/WhatIsAutoScaling.html>

NEW QUESTION 7

You have an application consisting of a stateless web server tier running on Amazon EC2 instances behind load balancer, and are using Amazon RDS with read replicas. Which of the following methods should you use to implement a self-healing and cost-effective architecture? Choose 2 answers from the options given below

- A. Set up a third-party monitoring solution on a cluster of Amazon EC2 instances in order to emit custom Cloud Watch metrics to trigger the termination of unhealthy Amazon EC2 instances.
- B. Set up scripts on each Amazon EC2 instance to frequently send ICMP pings to the load balancer in order to determine which instance is unhealthy and replace it.
- C. Set up an Auto Scaling group for the web server tier along with an Auto Scaling policy that uses the Amazon RDS DB CPU utilization Cloud Watch metric to scale the instances.
- D. Set up an Auto Scaling group for the web server tier along with an Auto Scaling policy that uses the Amazon EC2 CPU utilization CloudWatch metric to scale the instances.
- E. Use a larger Amazon EC2 instance type for the web server tier and a larger DB instance type for the data storage layer to ensure that they don't become unhealthy.
- F. Set up an Auto Scaling group for the database tier along with an Auto Scaling policy that uses the Amazon RDS read replica lag CloudWatch metric to scale out the Amazon RDS read replicas.
- G. Use an Amazon RDS Multi-AZ deployment.

Answer: DG

Explanation:

The scaling of EC2 Instances in the Autoscaling group is normally done with the metric of the CPU utilization of the current instances in the Autoscaling group. For more information on scaling in your Autoscaling Group, please refer to the below link:

- <http://docs.aws.amazon.com/autoscaling/latest/userguide/as-scaling-simple-step.html>

Amazon RDS Multi-AZ deployments provide enhanced availability and durability for Database (DB) Instances, making them a natural fit for production database workloads. When you provision a Multi-AZ DB Instance, Amazon RDS automatically creates a primary DB Instance and synchronously replicates the data to a standby instance in a different Availability Zone (AZ). Each AZ runs on its own physically distinct, independent infrastructure, and is engineered to be highly reliable. In case of an infrastructure failure, Amazon RDS performs an automatic failover to the standby (or to a read replica in the case of Amazon Aurora), so that you can resume database operations as soon as the failover is complete. For more information on RDS Multi-AZ please refer to the below link:

<https://aws.amazon.com/rds/details/multi-az/>

Option A is invalid because if you already have in-built metrics from Cloudwatch, why would you want to spend more in using a third-party monitoring solution.

Option B is invalid because health checks are already a feature of AWS CLB

Option C is invalid because the database CPU usage should not be used to scale the web tier.

Option D is invalid because increasing the instance size does not always guarantee that the solution will not become unhealthy.

Option F is invalid because increasing Read-Replica's will not suffice for write operations if the primary DB fails.

NEW QUESTION 8

You have been requested to use CloudFormation to maintain version control and achieve automation for the applications in your organization. How can you best use CloudFormation to keep everything agile and maintain multiple environments while keeping cost down?

- A. Create separate templates based on functionality, create nested stacks with CloudFormation.
- B. Use CloudFormation custom resources to handle dependencies between stacks
- C. Create multiple templates in one CloudFormation stack.
- D. Combine all resources into one template for version control and automation.

Answer: A

Explanation:

As your infrastructure grows, common patterns can emerge in which you declare the same components in each of your templates. You can separate out these common components and create dedicated templates for them. That way, you can mix and match different templates but use nested stacks to create a single, unified stack. Nested stacks are stacks that create other stacks. To create nested stacks, use the `AWS::CloudFormation::Stack` resource in your template to reference

other templates. For more information on CloudFormation best practices please refer to the below link:

<http://docs.aws.amazon.com/AWSCloudFormation/latest/UserGuide/best-practices.html>

NEW QUESTION 9

If your application performs operations or workflows that take a long time to complete, what service can the Elastic Beanstalk environment do for you?

- A. Manages an Amazon SQS queue and running a daemon process on each instance
- B. Manages an Amazon SNS Topic and running a daemon process on each instance
- C. Manages Lambda functions and running a daemon process on each instance
- D. Manages the ELB and running a daemon process on each instance

Answer: A

Explanation:

Elastic Beanstalk simplifies this process by managing the Amazon SQS queue and running a daemon process on each instance that reads from the queue for you. When the daemon pulls an item from the queue, it sends an HTTP POST request locally to <http://localhost/> with the contents of the queue message in the body. All that your application needs to do is perform the long-running task in response to the POST.

For more information Elastic Beanstalk managing worker environments, please visit the below URL:

? <http://docs.aws.amazon.com/elasticbeanstalk/latest/dg/using-features-managing-env-tiers.htm> I

NEW QUESTION 10

You are using Elastic Beanstalk to manage your e-commerce store. The store is based on an open source e-commerce platform and is deployed across multiple instances in an Auto Scaling group. Your development team often creates new "extensions" for the e-commerce store. These extensions include PHP source code as well as an SQL upgrade script used to make any necessary updates to the database schema. You have noticed that some extension deployments fail due to an error when running the SQL upgrade script. After further investigation, you realize that this is because the SQL script is being executed on all of your Amazon EC2 instances. How would you ensure that the SQL script is only executed once per deployment regardless of how many Amazon EC2 instances are running at the time?

- A. Use a "Container command" within an Elastic Beanstalk configuration file to execute the script, ensuring that the "leader only" flag is set to true.
- B. Make use of the Amazon EC2 metadata service to query whether the instance is marked as the leader" in the Auto Scaling group
- C. Only execute the script if "true" is returned.
- D. Use a "Solo Command" within an Elastic Beanstalk configuration file to execute the script
- E. The Elastic Beanstalk service will ensure that the command is only executed once.
- F. Update the Amazon RDS security group to only allow write access from a single instance in the Auto Scaling group; that way, only one instance will successfully execute the script on the database.

Answer: A

Explanation:

You can use the `container_commands` key to execute commands that affect your application source code. Container commands run after the application and web server have been set up and the application version archive has been extracted, but before the application version is deployed. Non-container commands and other customization operations are performed prior to the application source code being extracted.

You can use `leader_only` to only run the command on a single instance, or configure a test to only run the command when a test command evaluates to true.

Leader-only container commands are only executed during environment creation and deployments, while other commands and server customization operations are performed every time an instance is provisioned or updated. Leader-only container commands are not executed due to launch configuration changes, such as a change in the AMI ID or instance type. For more information on customizing containers, please visit the below URL:

<http://docs.aws.amazon.com/elasticbeanstalk/latest/dg/customize-containers-ec2.html>

NEW QUESTION 10

Your current log analysis application takes more than four hours to generate a report of the top 10 users of your web application. You have been asked to implement a system that can report this information in real time, ensure that the report is always up to date, and handle increases in the number of requests to your web application. Choose the option that is cost-effective and can fulfill the requirements.

- A. Publish your data to Cloud Watch Logs, and configure your application to autoscale to handle the load on demand.
- B. Publish your log data to an Amazon S3 bucket
- C. Use AWS CloudFormation to create an Auto Scaling group to scale your post-processing application which is configured to pull down your log files stored on Amazon S3.
- D. Post your log data to an Amazon Kinesis data stream, and subscribe your log-processing application so that it is configured to process your logging data.
- E. Create a multi-AZ Amazon RDS MySQL cluster, post the logging data to MySQL, and run a map reduce job to retrieve the required information on user counts.

Answer: C

Explanation:

When you see Amazon Kinesis as an option, this becomes the ideal option to process data in real time.

Amazon Kinesis makes it easy to collect, process, and analyze real-time, streaming data so you can get timely insights and react quickly to new information.

Amazon

Kinesis offers key capabilities to cost effectively process streaming data at any scale, along with the flexibility to choose the tools that best suit the requirements of your application. With Amazon Kinesis, you can ingest real-time data such as application logs, website clickstreams, IoT telemetry data, and more into your databases, data lakes and data warehouses, or build your own real-time applications using this data. For more information on Amazon Kinesis, please visit the below URL:

- <https://aws.amazon.com/kinesis>

NEW QUESTION 11

You use Amazon Cloud Watch as your primary monitoring system for your web application. After a recent software deployment, your users are getting Intermittent 500 Internal Server Errors when using the web application. You want to create a Cloud Watch alarm, and notify an on-call engineer when these occur. How can you accomplish this using AWS services? Choose three answers from the options given below

- A. Deploy your web application as an AWS Elastic Beanstalk application
- B. Use the default Elastic Beanstalk CloudWatch metrics to capture 500 Internal Server Error
- C. Set a CloudWatch alarm on that metric.
- D. Install a CloudWatch Logs Agent on your servers to stream web application logs to CloudWatch.
- E. Use Amazon Simple Email Service to notify an on-call engineer when a CloudWatch alarm is triggered.
- F. Create a CloudWatch Logs group and define metric filters that capture 500 Internal Server Error
- G. Set a CloudWatch alarm on that metric.
- H. Use Amazon Simple Notification Service to notify an on-call engineer when a CloudWatch alarm is triggered.

Answer: BDE

Explanation:

You can use Cloud Watch Logs to monitor applications and systems using log data

Cloud Watch Logs uses your log data for monitoring; so, no code changes are required. For example, you can monitor application logs for specific literal terms (such as "NullPointerException") or count the number of occurrences of a literal term at a particular position in log data (such as "404" status codes in an Apache access log). When the term you are searching for is found, Cloud Watch Logs reports the data to a CloudWatch metric that you specify. Log data is

encrypted while in transit and while it is at rest

For more information on Cloudwatch logs please refer to the below link: <http://docs.aws.amazon.com/AmazonCloudWatch/latest/logs/WhatIsCloudWatchLogs.html>

Amazon CloudWatch uses Amazon SNS to send email. First, create and subscribe to an SNS topic.

When you create a CloudWatch alarm, you can add this SNS topic to send an email notification when the alarm changes state.

For more information on SNS and Cloudwatch logs please refer to the below link:

http://docs.aws.amazon.com/AmazonCloudWatch/latest/monitoring/US_SetupSNS.html

NEW QUESTION 16

You are using CloudFormation to launch an EC2 instance and then configure an application after the instance is launched. You need the stack creation of the ELB and Auto Scaling to wait until the EC2 instance is launched and configured properly. How do you do this?

- A. It is not possible for the stack creation to wait until one service is created and launched
- B. Use the WaitCondition resource to hold the creation of the other dependent resources
- C. Use a CreationPolicy to wait for the creation of the other dependent resources >/
- D. Use the HoldCondition resource to hold the creation of the other dependent resources

Answer: C

Explanation:

When you provision an Amazon EC2 instance in an AWS Cloud Formation stack, you might specify additional actions to configure the instance, such as install software packages or bootstrap applications. Normally, CloudFormation proceeds with stack creation after the instance has been successfully created. However, you can use a Creation Policy so that CloudFormation proceeds with stack creation only after your configuration actions are done. That way you'll know your applications are ready to go after stack creation succeeds.

A Creation Policy instructs CloudFormation to wait on an instance until CloudFormation receives the specified number of signals

Option A is invalid because this is possible

Option B is invalid because this is used make AWS CloudFormation pause the creation of a stack and wait for a signal before it continues to create the stack

For more information on this, please visit the below URL:

- <https://aws.amazon.com/blogs/devops/use-a-creationpolicy-to-wait-for-on-instance-configurations/>

NEW QUESTION 21

You have enabled Elastic Load Balancing HTTP health checking. After looking at the AWS Management Console, you see that all instances are passing health checks, but your customers are reporting that your site is not responding. What is the cause?

- A. The HTTP health checking system is misreporting due to latency in inter-instance metadata synchronization.
- B. The health check in place is not sufficiently evaluating the application function.
- C. The application is returning a positive health check too quickly for the AWS Management Console to respond.
- D- Latency in DNS resolution is interfering with Amazon EC2 metadata retrieval.

Answer: B

Explanation:

You need to have a custom health check which will evaluate the application functionality. Its not enough using the normal health checks. If the application functionality does not work and if you don't have custom health checks, the instances will still be deemed as healthy.

If you have custom health checks, you can send the information from your health checks to Auto Scaling so that Auto Scaling can use this information. For example, if you determine that an instance is not functioning as expected, you can set the health status of the instance to Unhealthy. The next time that Auto Scaling performs a health check on the instance, it will determine that the instance is unhealthy and then launch a replacement instance

For more information on Autoscaling health checks, please refer to the below document link: from AWS

<http://docs.aws.amazon.com/autoscaling/latest/userguide/healthcheck.html>

NEW QUESTION 24

You have a large number of web servers in an Auto Scaling group behind a load balancer. On an hourly basis, you want to filter and process the logs to collect data on unique visitors, and then put that data in a durable data store in order to run reports. Web servers in the Auto Scaling group are constantly launching and terminating based on your scaling policies, but you do not want to lose any of the log data from these servers during a stop/termination initiated by a user or by Auto Scaling. What two approaches will meet these requirements? Choose two answers from the options given below.

- A. Install an Amazon Cloudwatch Logs Agent on every web server during the bootstrap process
- B. Create a CloudWatch log group and define Metric Filters to create custom metrics that track unique visitors from the streaming web server log
- C. Create a scheduled task on an Amazon EC2 instance that runs every hour to generate a new report based on the Cloudwatch custom metric
- D. ^/
- E. On the web servers, create a scheduled task that executes a script to rotate and transmit the logs to Amazon Glacier
- F. Ensure that the operating system shutdown procedure triggers a logs transmission when the Amazon EC2 instance is stopped/terminate
- G. Use Amazon Data Pipeline to process the data in Amazon Glacier and run reports every hour.
- H. On the web servers, create a scheduled task that executes a script to rotate and transmit the logs to an Amazon S3 bucket
- I. Ensure that the operating system shutdown procedure triggers a logs transmission when the Amazon EC2 instance is stopped/terminate
- J. Use AWS Data Pipeline to move log data from the Amazon S3 bucket to Amazon Redshift In order to process and run reports every hour.
- K. Install an AWS Data Pipeline Logs Agent on every web server during the bootstrap process
- L. Create a log group object in AWS Data Pipeline, and define Metric Filters to move processed log data directly from the web servers to Amazon Redshift and run reports every hour.

Answer: AC

Explanation:

You can use the Cloud Watch Logs agent installer on an existing EC2 instance to install and configure the Cloud Watch Logs agent.

For more information, please visit the below link:

- <http://docs.aws.amazon.com/AmazonCloudWatch/latest/logs/QuickStartEC2Instance.html>

You can publish your own metrics to Cloud Watch using the AWS CLI or an API. For more information, please visit the below link:

- <http://docs.aws.amazon.com/AmazonCloudWatch/latest/monitoring/publishingMetrics.html> Amazon Redshift is a fast, fully managed data warehouse that makes it simple and cost-effective to analyze all your data using standard SQL and your existing Business Intelligence (BI) tools. It allows you to run complex analytic queries against petabytes of structured data, using sophisticated query optimization, columnar storage on high-performance local disks, and massively parallel query execution. Most results come back in seconds. For more information on copying data from S3 to redshift, please refer to the below link:

- <http://docs.aws.amazon.com/datapipeline/latest/DeveloperGuide/dp-copydata-redshift.html>

NEW QUESTION 29

Your company develops a variety of web applications using many platforms and programming languages with different application dependencies. Each application must be developed and deployed quickly and be highly available to satisfy your business requirements. Which of the following methods should you use to deploy these applications rapidly?

- A. Develop the applications in Docker containers, and then deploy them to Elastic Beanstalk environments with Auto Scaling and Elastic Load Balancing.
- B. Use the AWS CloudFormation Docker import service to build and deploy the applications with high availability in multiple Availability Zones.
- C. Develop each application's code in DynamoDB, and then use hooks to deploy it to Elastic Beanstalk environments with Auto Scaling and Elastic Load Balancing.
- D. Store each application's code in a Git repository, develop custom package repository managers for each application's dependencies, and deploy to AWS OpsWorks in multiple Availability Zones.

Answer: A

Explanation:

Elastic Beanstalk supports the deployment of web applications from Docker containers. With Docker containers, you can define your own runtime environment. You can choose your own platform, programming language, and any application dependencies (such as package managers or tools), that aren't supported by other platforms. Docker containers are self-contained and include all the configuration information and software your web application requires to run.

By using Docker with Elastic Beanstalk, you have an infrastructure that automatically handles the details of capacity provisioning, load balancing, scaling, and application health monitoring.

For more information on Dockers and Elastic beanstalk please refer to the below link:

- http://docs.aws.amazon.com/elasticbeanstalk/latest/dg/create_deploy_docker.html

NEW QUESTION 33

Your application uses Cloud Formation to orchestrate your application's resources. During your testing phase before the application went live, your Amazon RDS instance type was changed and caused the instance to be re-created, resulting in the loss of test data. How should you prevent this from occurring in the future?

- A. Within the AWS CloudFormation parameter with which users can select the Amazon RDS instance type, set AllowedValues to only contain the current instance type.
- B. Use an AWS CloudFormation stack policy to deny updates to the instance.
- C. Only allow UpdateStack permission to IAM principals that are denied SetStackPolicy.
- D. In the AWS CloudFormation template, set the AWS::RDS::DBInstance's DBInstanceClass property to be read-only.
- E. Subscribe to the AWS CloudFormation notification "BeforeResourceUpdate," and call CancelStackUpdate if the resource identified is the Amazon RDS instance.
- F. Update the stack using ChangeSets

Answer: E

Explanation:

When you need to update a stack, understanding how your changes will affect running resources before you implement them can help you update stacks with confidence. Change sets allow you to preview how proposed changes to a stack might impact your running resources, for example, whether your changes will delete or replace any critical resources. AWS CloudFormation makes the changes to your stack only when you decide to execute the change set, allowing you to decide whether to proceed with your proposed changes or explore other changes by creating another change set.

For example, you can use a change set to verify that AWS CloudFormation won't replace your stack's database instances during an update.

NEW QUESTION 37

You are using Elastic Beanstalk to manage your application. You have a SQL script that needs to only be executed once per deployment no matter how many EC2 instances you have running. How can you do this?

- A. Use a "Container command" within an Elastic Beanstalk configuration file to execute the script, ensuring that the "leader only" flag is set to false.
- B. Use Elastic Beanstalk version and a configuration file to execute the script, ensuring that the "leader only" flag is set to true.
- C. Use a "Container command" within an Elastic Beanstalk configuration file to execute the script, ensuring that the "leader only" flag is set to true.
- D. Use a "leader command" within an Elastic Beanstalk configuration file to execute the script, ensuring that the "container only" flag is set to true.

Answer: C

Explanation:

You can use the container_commands key to execute commands that affect your application source code. Container commands run after the application and web server have been set up and the application version archive has been extracted, but before the application version is deployed. Non-container commands and other customization operations are performed prior to the application source code being extracted.

You can use leader_only to only run the command on a single instance, or configure a test to only run the command when a test command evaluates to true.

Leader-only container commands are only executed during environment creation and deployments, while other commands and server customization operations are performed every time an instance is provisioned or updated. Leader-only container commands are not executed due to launch configuration changes, such as a change in the AMI ID or instance type. For more information on customizing containers, please visit the below URL:

<http://docs.aws.amazon.com/elasticbeanstalk/latest/dg/customize-containers-ec2.html>

NEW QUESTION 42

You have an application running on Amazon EC2 in an Auto Scaling group. Instances are being bootstrapped dynamically, and the bootstrapping takes over 15 minutes to complete. You find that instances are reported by Auto Scaling as being In Service before bootstrapping has completed. You are receiving application alarms related to new instances before they have completed bootstrapping, which is causing confusion. You find the cause: your application monitoring tool is polling the Auto Scaling Service API for instances that are In Service, and creating alarms for new previously unknown instances. Which of the following will ensure that new instances are not added to your application monitoring tool before bootstrapping is completed?

- A. Create an Auto Scaling group lifecycle hook to hold the instance in a pending: wait state until your bootstrapping is complete.
- B. Once bootstrapping is complete, notify Auto Scaling to complete the lifecycle hook and move the instance into a pending: proceed state.
- C. Use the default Amazon CloudWatch application metrics to monitor your application's health.
- D. Configure an Amazon SNS topic to send these CloudWatch alarms to the correct recipients.
- E. Tag all instances on launch to identify that they are in a pending state.

- F. Change your application monitoring tool to look for this tag before adding new instances, and then use the Amazon API to set the instance state to 'pending' until bootstrapping is complete.
- G. Increase the desired number of instances in your Auto Scaling group configuration to reduce the time it takes to bootstrap future instances.

Answer: A

Explanation:

Auto Scaling lifecycle hooks enable you to perform custom actions as Auto Scaling launches or terminates instances. For example, you could install or configure software on newly launched instances, or download log files from an instance before it terminates. After you add lifecycle hooks to your Auto Scaling group, they work as follows:

1. Auto Scaling responds to scale out events by launching instances and scale in events by terminating instances.
2. Auto Scaling puts the instance into a wait state (Pending:Wait or Terminating:Wait). The instance remains in this state until either you tell Auto Scaling to continue or the timeout period ends.

For more information on rolling updates, please visit the below link:

- <http://docs.aws.amazon.com/autoscaling/latest/userguide/lifecycle-hooks.htm> |

NEW QUESTION 46

You work for an insurance company and are responsible for the day-to-day operations of your company's online quote system used to provide insurance quotes to members of the public. Your company wants to use the application logs generated by the system to better understand customer behavior. Industry, regulations also require that you retain all application logs for the system indefinitely in order to investigate fraudulent claims in the future. You have been tasked with designing a log management system with the following requirements:

- All log entries must be retained by the system, even during unplanned instance failure.
- The customer insight team requires immediate access to the logs from the past seven days.
- The fraud investigation team requires access to all historic logs, but will wait up to 24 hours before these logs are available.

How would you meet these requirements in a cost-effective manner? Choose three answers from the options below

- A. Configure your application to write logs to the instance's ephemeral disk, because this storage is free and has good write performance.
- B. Create a script that moves the logs from the instance to Amazon S3 once an hour.
- C. Write a script that is configured to be executed when the instance is stopped or terminated and that will upload any remaining logs on the instance to Amazon S3.
- D. Create an Amazon S3 lifecycle configuration to move log files from Amazon S3 to Amazon Glacier after seven days.
- E. Configure your application to write logs to the instance's default Amazon EBS boot volume, because this storage already exists.
- F. Create a script that moves the logs from the instance to Amazon S3 once an hour.
- G. Configure your application to write logs to a separate Amazon EBS volume with the "delete on termination" field set to false.
- H. Create a script that moves the logs from the instance to Amazon S3 once an hour.
- I. Create a housekeeping script that runs on a T2 micro instance managed by an Auto Scaling group for high availability.
- J. The script uses the AWS API to identify any unattached Amazon EBS volumes containing log files.
- K. Your housekeeping script will mount the Amazon EBS volume, upload all logs to Amazon S3, and then delete the volume.

Answer: CEF

Explanation:

Since all logs need to be stored indefinitely, Glacier is the best option for this. One can use Lifecycle events to stream the data from S3 to Glacier.

Lifecycle configuration enables you to specify the lifecycle management of objects in a bucket. The configuration is a set of one or more rules, where each rule defines an action for Amazon S3 to apply to a group of objects. These actions can be classified as follows:

- Transition actions - In which you define when objects transition to another storage class. For example, you may choose to transition objects to the STANDARD_IA (infrequent access) storage class 30 days after creation, or archive objects to the GLACIER storage class one year after creation.
- Expiration actions - In which you specify when the objects expire. Then Amazon S3 deletes the expired objects on your behalf. For more information on Lifecycle events, please refer to the below link:
- <http://docs.aws.amazon.com/AmazonS3/latest/dev/object-lifecycle-mgmt.html> | You can use scripts to put the logs onto a new volume and then transfer those logs to S3.

Note:

Moving the logs from EBS volume to S3 we have some custom scripts running in the background. In order to ensure the minimum memory requirements for the OS and the applications for the script to execute we can use a cost-effective EC2 instance.

Considering the computing resource requirements of the instance and the cost factor a t2.micro instance can be used in this case.

The following link provides more information on various t2 instances. <https://docs.aws.amazon.com/AWSEC2/latest/WindowsGuide/t2-instances.html>

Question is "How would you meet these requirements in a cost-effective manner? Choose three answers from the options below"

So here user has to choose the 3 options so that the requirement is fulfilled. So in the given 6 options, options C, E and F fulfill the requirement.

"The EC2s use EBS volumes and the logs are stored on EBS volumes those are marked for non-termination" - is one of the ways to fulfill requirement. So this shouldn't be an issue.

NEW QUESTION 47

You've been tasked with improving the current deployment process by making it easier to deploy and reducing the time it takes. You have been tasked with creating a continuous integration (CI) pipeline that can build AMIs. Which of the below is the best manner to get this done. Assume that at max your development team will be deploying builds 5 times a week.

- A. Use a dedicated EC2 instance with an EBS Volume.
- B. Download and configure the code and then create an AMI out of that.
- C. Use OpsWorks to launch an EBS-backed instance, then use a recipe to bootstrap the instance, and then have the CI system use the CreateImage API call to make an AMI from it.
- D. Upload the code and dependencies to Amazon S3, launch an instance, download the package from Amazon S3, then create the AMI with the CreateSnapshot API call.
- E. Have the CI system launch a new instance, then bootstrap the code and dependencies on that instance, and create an AMI using the CreateImage API call.

Answer: D

Explanation:

Since the number of builds is just a few times a week, there are many open source systems such as Jenkins which can be used as CI-based systems.

Jenkins can be used as an extensible automation server, Jenkins can be used as a simple CI server or turned into the continuous delivery hub for any project.

For more information on the Jenkins CI tool please refer to the below link:

• <https://jenkins.io/>

Option A and C are partially correct, but since you just have 5 deployments per week, having separate instances which consume costs is not required. Option B is partially correct, but again having a separate system such as Opswork for such a low number of deployments is not required.

NEW QUESTION 52

You have deployed an Elastic Beanstalk application in a new environment and want to save the current state of your environment in a document. You want to be able to restore your environment to the current state later or possibly create a new environment. You also want to make sure you have a restore point. How can you achieve this?

- A. Use CloudFormation templates
- B. Configuration Management Templates
- C. Saved Configurations
- D. Saved Templates

Answer: C

Explanation:

You can save your environment's configuration as an object in Amazon S3 that can be applied to other environments during environment creation, or applied to a running environment. Saved configurations are YAML formatted templates that define an environment's platform configuration, tier, configuration option settings, and tags.

For more information on Saved Configurations please refer to the below link:

- <http://docs.aws.amazon.com/elasticbeanstalk/latest/dg/environment-configuration-savedconfig.html>

NEW QUESTION 56

You have an application hosted in AWS. This application was created using CloudFormation Templates and Autoscaling. Now your application has got a surge of users which is decreasing the performance of the application. As per your analysis, a change in the instance type to C3 would resolve the issue. Which of the below option can introduce this change while minimizing downtime for end users?

- A. Copy the old launch configuration, and create a new launch configuration with the C3 instance
- B. Update the Auto Scaling group with the new launch configuration
- C. Auto Scaling will then update the instance type of all running instances.
- D. Update the launch configuration in the AWS CloudFormation template with the new C3 instance type
- E. Add an UpdatePolicy attribute to the Auto Scaling group that specifies an AutoScalingRollingUpdate
- F. Run a stack update with the updated template.
- G. Update the existing launch configuration with the new C3 instance type
- H. Add an UpdatePolicy attribute to your Auto Scaling group that specifies an AutoScaling RollingUpdate in order to avoid downtime.
- I. Update the AWS CloudFormation template that contains the launch configuration with the new C3 instance type
- J. Run a stack update with the updated template, and Auto Scaling will then update the instances one at a time with the new instance type.

Answer: B

Explanation:

Ensure first that the cloudformation template is updated with the new instance type.

The AWS::AutoScaling::AutoScalingGroup resource supports an UpdatePolicy attribute. This is used to define how an Auto Scaling group resource is updated when

an update to the Cloud Formation stack occurs. A common approach to updating an Auto Scaling group is to perform a rolling update, which is done by specifying the AutoScalingRollingUpdate policy. This retains the same Auto Scaling group and replaces old instances with new ones, according to the parameters specified.

Option A is invalid because this will cause an interruption to the users.

Option C is partially correct, but it does not have all the steps as mentioned in option B.

Option D is partially correct, but we need the AutoScalingRollingUpdate attribute to ensure a rolling update is performed.

For more information on AutoScaling Rolling updates please refer to the below link:

- <https://aws.amazon.com/premiumsupport/knowledge-center/auto-scaling-group-rolling-updates/>

NEW QUESTION 60

You need to create a Route53 record automatically in CloudFormation when not running in production during all launches of a Template. How should you implement this?

- A. Use a Parameter for environment, and add a Condition on the Route53 Resource in the template to create the record only when environment is not production.
- B. Create two templates, one with the Route53 record value and one with a null value for the record
- C. Use the one without it when deploying to production.
- D. Use a Parameter for environment, and add a Condition on the Route53 Resource in the template to create the record with a null string when environment is production.
- E. Create two templates, one with the Route53 record and one without it
- F. Use the one without it when deploying to production.

Answer: A

Explanation:

The optional Conditions section includes statements that define when a resource is created or when a property is defined. For example, you can compare whether a value is equal to another value. Based on the result of that condition, you can conditionally create resources. If you have multiple conditions, separate them with commas.

You might use conditions when you want to reuse a template that can create resources in different contexts, such as a test environment versus a production environment. In your template, you can add an EnvironmentType input parameter, which accepts either prod or test as inputs. For the production environment, you might include Amazon EC2 instances with certain capabilities; however, for the test environment, you want to use reduced capabilities to save money. With conditions, you can define which resources are created and how they're configured for each environment type.

For more information on CloudFormation conditions please refer to the below link: <http://docs.aws.amazon.com/AWSCloudFormation/latest/UserGuide/conditions-section-structure.html>

NEW QUESTION 64

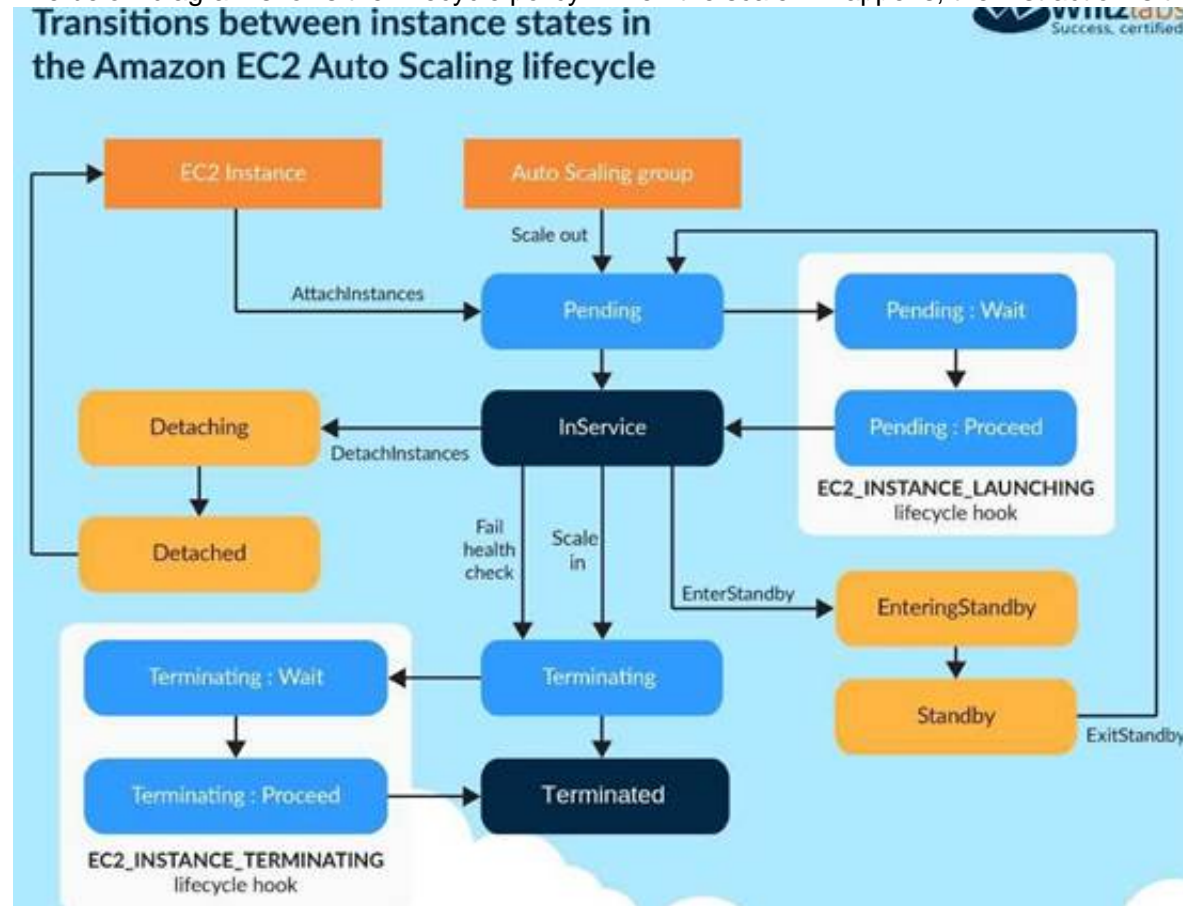
For AWS Auto Scaling, what is the first transition state an instance enters after leaving steady state when scaling in due to health check failure or decreased load?

- A. Terminating
- B. Detaching
- C. Terminating:Wait
- D. EnteringStandby

Answer: A

Explanation:

The below diagram shows the Lifecycle policy. When the scale-in happens, the first action is the Terminating action.



For more information on Autoscaling Lifecycle, please refer to the below link:

<http://docs.aws.amazon.com/autoscaling/latest/userguide/AutoScalingGroupLifecycle.html>

NEW QUESTION 67

You want to pass queue messages that are 1GB each. How should you achieve this?

- A. Use Kinesis as a buffer stream for message bodies
- B. Store the checkpoint id for the placement in the Kinesis Stream in SQS.
- C. Use the Amazon SQS Extended Client Library for Java and Amazon S3 as a storage mechanism for message bodies.
- D. Use SQS's support for message partitioning and multi-part uploads on Amazon S3.
- E. Use AWS EFS as a shared pool storage medium
- F. Store filesystem pointers to the files on disk in the SQS message bodies.

Answer: B

Explanation:

You can manage Amazon SQS messages with Amazon S3. This is especially useful for storing and consuming messages with a message size of up to 2 GB. To manage

Amazon SQS messages with Amazon S3, use the Amazon SQS Extended Client Library for Java. Specifically, you use this library to:

- Specify whether messages are always stored in Amazon S3 or only when a message's size exceeds 256 KB.
- Send a message that references a single message object stored in an Amazon S3 bucket.
- Get the corresponding message object from an Amazon S3 bucket.
- Delete the corresponding message object from an Amazon S3 bucket.

For more information on processing large messages for SQS, please visit the below URL:

<http://docs.aws.amazon.com/AWSSimpleQueueService/latest/SQSDeveloperGuide/sqs-s3-messages.html>

NEW QUESTION 68

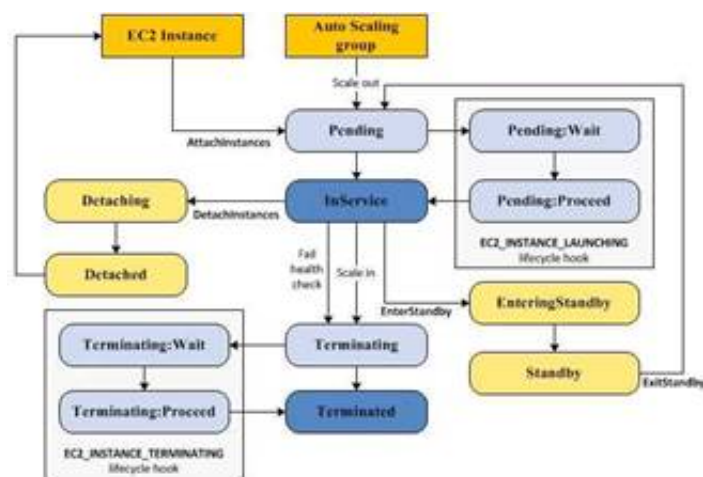
For AWS Auto Scaling, what is the first transition state an existing instance enters after leaving Standby state?

- A. Detaching
- B. Terminating:Wait
- C. Pending
- D. EnteringStandby

Answer: C

Explanation:

The below diagram shows the Lifecycle policy. When the stand-by state is exited, the next state is pending.



For more information on Autoscaling Lifecycle, please refer to the below link:
<http://docs.aws.amazon.com/autoscaling/latest/userguide/AutoScalingGroupLifecycle.html>

NEW QUESTION 71

You run accounting software in the AWS cloud. This software needs to be online continuously during the day every day of the week, and has a very static requirement for compute resources. You also have other, unrelated batch jobs that need to run once per day at anytime of your choosing. How should you minimize cost?

- A. Purchase a Heavy Utilization Reserved Instance to run the accounting software
- B. Turn it off after hour
- C. Run the batch jobs with the same instance class, so the Reserved Instance credits are also applied to the batch jobs.
- D. Purchase a Medium Utilization Reserved Instance to run the accounting software
- E. Turn it off after hour
- F. Run the batch jobs with the same instance class, so the Reserved Instance credits are also applied to the batch jobs.
- G. Purchase a Light Utilization Reserved Instance to run the accounting software
- H. Turn it off after hour
- I. Run the batch jobs with the same instance class, so the Reserved Instance credits are also applied to the batch jobs.
- J. Purchase a Full Utilization Reserved Instance to run the accounting software
- K. Turn it off after hour
- L. Run the batch jobs with the same instance class, so the Reserved Instance credits are also applied to the batch jobs.

Answer: A

Explanation:

Reserved Instances provide you with a significant discount compared to On-Demand Instance pricing.

Reserved Instances are not physical instances, but rather a billing discount applied to the use of On-Demand Instances in your account. These On-Demand Instances must match certain attributes in order to benefit from the billing discount

For more information, please refer to the below link:

- <https://aws.amazon.com/about-aws/whats-new/2011/12/01/New-Amazon-CC2-Reserved-Instances-Options-Now-Available/>
- <https://aws.amazon.com/blogs/aws/reserved-instance-options-for-amazon-ec2/>
- <http://docs.aws.amazon.com/AWSEC2/latest/UserGuide/ec2-reserved-instances.html> Note:

It looks like these options are also no more available at present.

It looks like Convertible, Standard and scheduled are the new instance options. However the exams may still be referring to the old RIs.

<https://aws.amazon.com/ec2/pricing/reserved-instances/>

NEW QUESTION 75

You need to create a simple, holistic check for your system's general availability and uptime. Your system presents itself as an HTTP-speaking API. What is the most simple tool on AWS to achieve this with?

- A. Route53 Health Checks
- B. CloudWatch Health Checks
- C. AWS ELB Health Checks
- D. EC2 Health Checks

Answer: A

Explanation:

Amazon Route 53 health checks monitor the health and performance of your web applications, web servers, and other resources. Each health check that you create

can monitor one of the following:

- The health of a specified resource, such as a web server
- The status of an Amazon Cloud Watch alarm
- The status of other health checks

For more information on Route53 Health checks, please refer to the below link:

- <http://docs.aws.amazon.com/Route53/latest/DeveloperGuide/dns-failover.html>

NEW QUESTION 79

You are building a game high score table in DynamoDB. You will store each user's highest score for each game, with many games, all of which have relatively similar usage levels and numbers of players. You need to be able to look up the highest score for any game. What's the best DynamoDB key structure?

- A. HighestScore as the hash/only key.
- B. GameID as the hash key, HighestScore as the range key
- C. GameID as the hash/only key.
- D. GameID as the hash/only key.

Answer: B

Explanation:

It always best to choose the hash key as the column that will have a wide range of values. This is also given in the AWS documentation

Choosing a Partition Key

The following table compares some common partition key schemas for provisioned throughput efficiency:

Partition key value	Uniformity
User ID, where the application has many users.	Good
Status code, where there are only a few possible status codes.	Bad
Item creation date, rounded to the nearest time period (e.g. day, hour, minute)	Bad
Device ID, where each device accesses data at relatively similar intervals	Good
Device ID, where even if there are a lot of devices being tracked, one is by far more popular than all the others.	Bad

Next since you need to sort by the Highest Score, you need to use that as the sort key For more information on Table Guidelines, please visit the below URL:

- [http://docs.aws.amazon.com/amazondynamodb/latest/developerguide/Guide linesForTables.html](http://docs.aws.amazon.com/amazondynamodb/latest/developerguide/Guide%20lines%20For%20Tables.html)

NEW QUESTION 80

Your company needs to automate 3 layers of a large cloud deployment. You want to be able to track this deployment's evolution as it changes over time, and carefully control any alterations. What is a good way to automate a stack to meet these requirements?

- A. Use OpsWorks Stacks with three layers to model the layering in your stack.
- B. Use CloudFormation Nested Stack Templates, with three child stacks to represent the three logical layers of your cloud.
- C. Use AWS Config to declare a configuration set that AWS should roll out to your cloud.
- D. Use Elastic Beanstalk Linked Applications, passing the important DNS entries between layers using the metadata interface.

Answer: B

Explanation:

As your infrastructure grows, common patterns can emerge in which you declare the same components in each of your templates. You can separate out these common components and create dedicated templates for them. That way, you can mix and match different templates but use nested stacks to create a single, unified stack. Nested stacks are stacks that create other stacks. To create nested stacks, use the AWS::CloudFormation::Stack resource in your template to reference other templates.

For more information on nested stacks, please visit the below URL:

- <http://docs.aws.amazon.com/AWSCloudFormation/latest/UserGuide/best-practices.html#nested-stacks>

The query is, how you can automate a stack over the period of time, when changes are required, without recreating the stack.

The function of Nested Stacks are to reuse Common Template Patterns.

For example, assume that you have a load balancer configuration that you use for most of your stacks. Instead of copying and pasting the same configurations into your templates, you can create a dedicated template for the load balancer. Then, you just use the resource to reference that template from within other templates. Yet another example is if you have a launch configuration with certain specific configuration and you need to change the instance size only in the production environment and to leave it as it is in the development environment.

AWS also recommends that updates to nested stacks are run from the parent stack.

When you apply template changes to update a top-level stack, AWS CloudFormation updates the top-level stack and initiates an update to its nested stacks. AWS CloudFormation updates the resources of modified nested stacks, but does not update the resources of unmodified nested stacks.

NEW QUESTION 84

You are planning on using encrypted snapshots in the design of your AWS Infrastructure. Which of the following statements are true with regards to EBS Encryption

- A. Snapshotting an encrypted volume makes an encrypted snapshot; restoring an encrypted snapshot creates an encrypted volume when specified / requested.
- B. Snapshotting an encrypted volume makes an encrypted snapshot when specified / requested; restoring an encrypted snapshot creates an encrypted volume when specified / requested.
- C. Snapshotting an encrypted volume makes an encrypted snapshot; restoring an encrypted snapshot always creates an encrypted volume.
- D. Snapshotting an encrypted volume makes an encrypted snapshot when specified / requested; restoring an encrypted snapshot always creates an encrypted volume.

Answer: C

Explanation:

Amazon EBS encryption offers you a simple encryption solution for your EBS volumes without the need for you to build, maintain, and secure your own key management infrastructure. When you create an encrypted EBS volume and attach it to a supported instance type, the following types of data are encrypted:

- Data at rest inside the volume
- All data moving between the volume and the instance
- All snapshots created from the volume

Snapshots that are taken from encrypted volumes are automatically encrypted. Volumes that are created from encrypted snapshots are also automatically encrypted.

For more information on EBS encryption, please visit the below URL:

- [http://docs.aws.amazon.com/AWSCloudFormation/latest/UserGuide/ EBSEncryption.html](http://docs.aws.amazon.com/AWSCloudFormation/latest/UserGuide/ebsec.html)

NEW QUESTION 85

You need to run a very large batch data processing job one time per day. The source data exists entirely in S3, and the output of the processing job should also be written to S3 when finished. If you need to version control this processing job and all setup and teardown logic for the system, what approach should you use?

- A. Model an AWS EMR job in AWS Elastic Beanstalk.
- B. Model an AWS EMR job in AWS CloudFormation.

- C. Model an AWS EMRjob in AWS OpsWorks.
D. Model an AWS EMRjob in AWS CLI Composer.

Answer: B

Explanation:

With AWS Cloud Formation, you can update the properties for resources in your existing stacks.

These changes can range from simple configuration changes, such

as updating the alarm threshold on a Cloud Watch alarm, to more complex changes, such as updating the Amazon Machine Image (AMI) running on an Amazon EC2

instance. Many of the AWS resources in a template can be updated, and we continue to add support for more.

For more information on Cloudformation version control, please visit the below URL:

<http://docs.aws.amazon.com/AWSCloudFormation/latest/UserGuide/updatesstacks.html>

NEW QUESTION 89

Which of the following tools does not directly support AWS OpsWorks, for monitoring your stacks?

- A. AWSConfig
B. Amazon CloudWatch Metrics
C. AWSCloudTrail
D. Amazon CloudWatch Logs

Answer: A

Explanation:

You can monitor your stacks in the following ways.

- AWS OpsWorks Stacks uses Amazon CloudWatch to provide thirteen custom metrics with detailed monitoring for each instance in the stack.
- AWS OpsWorks Stacks integrates with AWS CloudTrail to log every AWS OpsWorks Stacks API call and store the data in an Amazon S3 bucket.
- You can use Amazon CloudWatch Logs to monitor your stack's system, application, and custom logs.

For more information on Opswork monitoring, please visit the below URL:

- <http://docs.aws.amazon.com/opsworks/latest/userguide/monitoring.html>

NEW QUESTION 91

There is a very serious outage at AWS. EC2 is not affected, but your EC2 instance deployment scripts stopped working in the region with the outage. What might be the issue?

- A. The AWS Console is down, so your CLI commands do not work.
B. S3 is unavailable, so you can't create EBS volumes from a snapshot you use to deploy new volumes.
C. AWS turns off the DeployCode API call when there are major outages, to protect from system floods.
D. None of the other answers make sense
E. If EC2 is not affected, it must be some other issue.

Answer: B

Explanation:

The CBS Snapshots are stored in S3, so if you have an scripts which deploy EC2 Instances, the CBS volumes need to be constructed from snapshots stored in S3.

You can back up the data on your Amazon CBS volumes to Amazon S3 by taking point-in-time snapshots. Snapshots are incremental backups, which means that only the blocks on the device that have changed after your most recent snapshot are saved. This minimizes the time required to create the snapshot and saves on storage costs by not duplicating data. When you delete a snapshot, only the data unique to that snapshot is removed. Each snapshot contains all of the information needed to restore your data (from the moment when the snapshot was taken) to a new CBS volume. For more information on CBS Snapshots, please visit the below URL:

- <http://docs.aws.amazon.com/AWSC2/latest/UserGuide/CBSnapshots.html>

NEW QUESTION 93

You need your API backed by DynamoDB to stay online during a total regional AWS failure. You can tolerate a couple minutes of lag or slowness during a large failure event, but the system should recover with normal operation after those few minutes. What is a good approach?

- A. Set up DynamoDB cross-region replication in a master-standby configuration, with a single standby in another region
B. Create an Auto Scaling Group behind an ELB in each of the two regions for your application layer in which DynamoDB is running
C. Add a Route53 Latency DNS Record with DNS Failover, using the ELBs in the two regions as the resource records.
D. Set up a DynamoDB Global table
E. Create an Auto Scaling Group behind an ELB in each of the two regions for your application layer in which the DynamoDB is running
F. Add a Route53 Latency DNS Record with DNS Failover, using the ELBs in the two regions as the resource records.
G. Set up a DynamoDB Multi-Region table
H. Create a cross-region ELB pointing to a cross-region Auto Scaling Group, and direct a Route53 Latency DNS Record with DNS Failover to the cross-region ELB.
I. Set up DynamoDB cross-region replication in a master-standby configuration, with a single standby in another region
J. Create a cross-region ELB pointing to a cross-region Auto Scaling Group, and direct a Route53 Latency DNS Record with DNS Failover to the cross-region ELB.

Answer: B

Explanation:

Updated based on latest AWS updates

Option A is invalid because using Latency based routing will send traffic on the region with the standby instance. This is an active/passive replication and you can't write to the standby table unless there is a failover. Answer A can work only if you use a failover routing policy.

Option D is invalid because there is no concept of a cross region CLB.

Amazon DynamoDB global tables provide a fully managed solution for deploying a multi-region, multi-master database, without having to build and maintain your own replication solution. When you create a global table, you specify the AWS regions where you want the table to be available. DynamoDB performs all of the necessary tasks to create identical tables in these regions, and propagate ongoing data changes to all of them.

For more information on DynamoDB GlobalTables, please visit the below URL:
<https://docs.aws.amazon.com/amazondynamodb/latest/developerguide/GlobalTables.html>

NEW QUESTION 94

If I want Cloud Formation stack status updates to show up in a continuous delivery system in as close to real time as possible, how should I achieve this?

- A. Use a long-poll on the Resources object in your Cloud Formation stack and display those state changes in the UI for the system.
- B. Use a long-poll on the ListStacksAPI call for your CloudFormation stack and display those state changes in the UI for the system.
- C. Subscribe your continuous delivery system to an SNS topic that you also tell your CloudFormation stack to publish events into.
- D. Subscribe your continuous delivery system to an SQS queue that you also tell your CloudFormation stack to publish events into.

Answer: C

Explanation:

Answer - C

You can monitor the progress of a stack update by viewing the stack's events. The console's Cvents tab displays each major step in the creation and update of the stack sorted by the time of each event with latest events on top. The start of the stack update process is marked with an UPDATE_IN_PROGRCSS event for the stack For more information on Monitoring your stack, please visit the below URL:

<http://docs.aws.amazon.com/AWSCloudFormation/latest/UserGuide/using-cfn-updating-stacks-monitor-stack.html>

NEW QUESTION 96

You are building a Ruby on Rails application for internal, non-production use which uses MySQL as a database. You want developers without very much AWS experience to be able to deploy new code with a single command line push. You also want to set this up as simply as possible. Which tool is ideal for this setup?

- A. AWSCloudFormation
- B. AWSOpsWorks
- C. AWS ELB+ EC2 with CLI Push
- D. AWS Elastic Beanstalk

Answer: D

Explanation:

With Elastic Beanstalk, you can quickly deploy and manage applications in the AWS Cloud without worrying about the infrastructure that runs those applications. AWS Elastic Beanstalk reduces management complexity without restricting choice or control. You simply upload your application, and Elastic Beanstalk automatically handles the details of capacity provisioning, load balancing, scaling, and application health monitoring.

Elastic Beanstalk supports applications developed in Java, PHP, .NET, Node.js, Python, and Ruby, as well as different container types for each language.

For more information on Elastic beanstalk, please visit the below URL:

- <http://docs.aws.amazon.com/elasticbeanstalk/latest/dg/Welcome.html>

NEW QUESTION 100

Your team wants to begin practicing continuous delivery using CloudFormation, to enable automated builds and deploys of whole, versioned stacks or stack layers. You have a 3-tier, mission-critical system. Which of the following is NOT a best practice for using CloudFormation in a continuous delivery environment?

- A. Use the AWS CloudFormation ValidateTemplate call before publishing changes to AWS.
- B. Model your stack in one template, so you can leverage CloudFormation's state management and dependency resolution to propagate all changes.
- C. Use CloudFormation to create brand new infrastructure for all stateless resources on each push, and run integration tests on that set of infrastructure.
- D. Parametrize the template and use Mappings to ensure your template works in multiple Regions.

Answer: B

Explanation:

Answer - B

Some of the best practices for Cloudformation are

- Created Nested stacks

As your infrastructure grows, common patterns can emerge in which you declare the same components in each of your templates. You can separate out these common components and create dedicated templates for them. That way, you can mix and match different templates but use nested stacks to create a single, unified stack. Nested stacks are stacks that create other stacks. To create nested stacks, use the AWS::CloudFormation::Stackresource in your template to reference other templates.

- Reuse Templates

After you have your stacks and resources set up, you can reuse your templates to replicate your infrastructure in multiple environments. For example, you can create environments for development, testing, and production so that you can test changes before implementing them into production. To make templates reusable, use the parameters, mappings, and conditions sections so that you can customize your stacks when you create them. For example, for your development environments, you can specify a lower-cost instance type compared to your production environment, but all other configurations and settings remain the same. For more information on Cloudformation best practises, please visit the below URL:

<http://docs.aws.amazon.com/AWSCloudFormation/latest/UserGuide/best-practices.html>

NEW QUESTION 102

You run a 2000-engineer organization. You are about to begin using AWS at a large scale for the first time. You want to integrate with your existing identity management system running on Microsoft Active Directory, because your organization is a power-user of Active Directory. How should you manage your AWS identities in the most simple manner?

- A. Use AWS Directory Service Simple AD.
- B. Use AWS Directory Service AD Connector.
- C. Use an Sync Domain running on AWS Directory Service.
- D. Use an AWS Directory Sync Domain running on AWS Lambda.

Answer: B

Explanation:

AD Connector is a directory gateway with which you can redirect directory requests to your on-premises Microsoft Active Directory without caching any information in the cloud. AD Connector comes in two sizes, small and large. A small AD Connector is designed for smaller organizations of up to 500 users. A large AD Connector

can support larger organizations of up to 5,000 users. Once set up, AD Connector offers the following benefits:

- Your end users and IT administrators can use their existing corporate credentials to log on to AWS applications such as Amazon Workspaces, Amazon WorkDocs, or Amazon WorkMail.
- You can manage AWS resources like Amazon EC2 instances or Amazon S3 buckets through 1AM role-based access to the AWS Management Console.
- You can consistently enforce existing security policies (such as password expiration, password history, and account lockouts) whether users or IT administrators are accessing resources in your on-premises infrastructure or in the AWS Cloud.
- You can use AD Connector to enable multi-factor authentication by integrating with your existing RADIUS-based MFA infrastructure to provide an additional layer of security when users access AWS applications.

For more information on the AD Connector, please visit the below URL:

- http://docs.aws.amazon.com/directoryservice/latest/admin-guide/directory_ad_connector.htm

NEW QUESTION 103

Your CTO thinks your AWS account was hacked. What is the only way to know for certain if there was unauthorized access and what they did, assuming your hackers are very sophisticated AWS engineers and doing everything they can to cover their tracks?

- A. Use CloudTrail Log File Integrity Validation.
- B. Use AWS Config SNS Subscriptions and process events in real time.
- C. Use CloudTrail backed up to AWS S3 and Glacier.
- D. Use AWS Config Timeline forensics.

Answer: A

Explanation:

To determine whether a log file was modified, deleted, or unchanged after CloudTrail delivered it, you can use CloudTrail log file integrity validation. This feature is built using industry standard algorithms: SHA-256 for hashing and SHA-256 with RSA for digital signing. This makes it computationally infeasible to modify, delete or forge CloudTrail log files without detection. You can use the AWS CLI to validate the files in the location where CloudTrail delivered them

Validated log files are invaluable in security and forensic investigations. For example, a validated log file enables you to assert positively that the log file itself has not changed, or that particular user credentials performed specific API activity. The CloudTrail log file integrity validation process also lets you know if a log file has been deleted or changed, or assert positively that no log files were delivered to your account during a given period of time.

For more information on CloudTrail log file validation, please visit the below URL:

<http://docs.aws.amazon.com/awsccloudtrail/latest/userguide/cloudtrail-log-file-validation-intro.html>

NEW QUESTION 105

Your serverless architecture using AWS API Gateway, AWS Lambda, and AWS DynamoDB experienced a large increase in traffic to a sustained 3000 requests per second, and dramatically increased in failure rates. Your requests, during normal operation, last 500 milliseconds on average. Your DynamoDB table did not exceed 50% of provisioned throughput, and Table primary keys are designed correctly. What is the most likely issue?

- A. Your API Gateway deployment is throttling your requests.
- B. Your AWS API Gateway Deployment is bottlenecking on request (deserialization).
- C. You did not request a limit increase on concurrent Lambda function executions.
- D. You used Consistent Read requests on DynamoDB and are experiencing semaphore lock.

Answer: C

Explanation:

Every Lambda function is allocated with a fixed amount of specific resources regardless of the memory allocation, and each function is allocated with a fixed amount of code storage per function and per account.

By default, AWS Lambda limits the total concurrent executions across all functions within a given region to 1000.

For more information on Concurrent executions, please visit the below URL: <http://docs.aws.amazon.com/lambda/latest/dg/concurrent-executions.html>

NEW QUESTION 110

You need to grant a vendor access to your AWS account. They need to be able to read protected messages in a private S3 bucket at their leisure. They also use AWS. What is the best way to accomplish this?

- A. Create an 1AM User with API Access Key
- B. Grant the User permissions to access the bucket
- C. Give the vendor the AWS Access Key ID and AWS Secret Access Key for the User.
- D. Create an EC2 Instance Profile on your account
- E. Grant the associated 1AM role full access to the bucket
- F. Start an EC2 instance with this Profile and give SSH access to the instance to the vendor.
- G. Create a cross-account IAM Role with permission to access the bucket, and grant permission to use the Role to the vendor AWS account.
- D- Generate a signed S3 PUT URL and a signed S3 GET URL, both with wildcard values and 2 year duration
- H. Pass the URLs to the vendor.

Answer: C

Explanation:

You can use AWS Identity and Access Management (IAM) roles and AWS Security Token Service (STS) to set up cross-account access between AWS accounts. When you assume an IAM role in another AWS account to obtain cross-account access to services and resources in that account, AWS CloudTrail logs the cross-account activity. For more information on Cross Account Access, please visit the below URL:

- <https://aws.amazon.com/blogs/security/tag/cross-account-access/>

NEW QUESTION 114

You need your CI to build AMIs with code pre-installed on the images on every new code push. You need to do this as cheaply as possible. How do you do this?

- A. Bid on spot instances just above the asking price as soon as new commits come in, perform all instance configuration and setup, then create an AMI based on

the spot instance.

- B. Have the CI launch a new on-demand EC2 instance when new commits come in, perform all instance configuration and setup, then create an AMI based on the on-demand instance.
- C. Purchase a Light Utilization Reserved Instance to save money on the continuous integration machine.
- D. Use these credits whenever you create AMIs on instances.
- E. When the CI instance receives commits, attach a new EBS volume to the CI machine.
- F. Perform all setup on this EBS volume so you don't need

Answer: A

Explanation:

Amazon EC2 Spot instances allow you to bid on spare Amazon EC2 computing capacity. Since Spot instances are often available at a discount compared to On-Demand pricing, you can significantly reduce the cost of running your applications, grow your application's compute capacity and throughput for the same budget, and enable new types of cloud computing applications.

For more information on Spot Instances, please visit the below URL: <https://aws.amazon.com/ec2/spot/>

NEW QUESTION 115

Which of the following is the default deployment mechanism used by Elastic Beanstalk when the application is created via Console or EBCLI?

- A. All at Once
- B. Rolling Deployments
- C. Rolling with additional batch
- D. Immutable

Answer: B

Explanation:

The AWS documentation mentions

AWS Elastic Beanstalk provides several options for how deployments are processed, including deployment policies (All at once, Rolling, Rolling with additional batch,

and Immutable) and options that let you configure batch size and health check behavior during deployments. By default, your environment uses rolling deployments

if you created it with the console or EB CLI, or all at once deployments if you created it with a different client (API, SDK or AWS CLI).

For more information on Elastic Beanstalk deployments, please refer to the below link:

- <http://docs.aws.amazon.com/elasticbeanstalk/latest/dg/using-features.rolling-version-deploy.html>

NEW QUESTION 119

You currently have EC2 Instances hosting an application. These instances are part of an AutoScaling Group. You now want to change the instance type of the EC2 Instances. How can you manage the deployment with the least amount of downtime

- A. Terminate the existing Auto Scaling group
- B. Create a new launch configuration with the new Instance type
- C. Attach that to the new AutoScaling Group.
- D. Use the AutoScalingRollingUpdate policy on CloudFormation Template Auto Scaling group
- E. Use the Rolling Update feature which is available for EC2 Instances.
- F. Manually terminate the instances, launch new instances with the new instance type and attach them to the AutoScaling group

Answer: B

Explanation:

The AWS::AutoScaling::AutoScalingGroup resource supports an UpdatePolicy attribute. This is used to define how an Auto Scaling group resource is updated when

an update to the CloudFormation stack occurs. A common approach to updating an Auto Scaling group is to perform a rolling update, which is done by specifying the

AutoScalingRollingUpdate policy. This retains the same Auto Scaling group and replaces old instances with new ones, according to the parameters specified.

For more information on AutoScaling Rolling Update, please refer to the below link:

- <https://aws.amazon.com/premiumsupport/knowledge-center/auto-scaling-group-rolling-updates/>

NEW QUESTION 123

Which of the following services can be used in conjunction with Cloudwatch Logs. Choose the 3 most viable services from the options given below

- A. Amazon Kinesis
- B. Amazon S3
- C. Amazon SQS
- D. Amazon Lambda

Answer: ABD

Explanation:

The AWS Documentation the following products which can be integrated with Cloudwatch logs

1) Amazon Kinesis - Here data can be fed for real time analysis

2) Amazon S3 - You can use CloudWatch Logs to store your log data in highly durable storage such as S3.

3) Amazon Lambda - Lambda functions can be designed to work with Cloudwatch log For more information on Cloudwatch Logs, please refer to the below link:

link: <http://docs.aws.amazon.com/AmazonCloudWatch/latest/logs/WhatIsCloudWatchLogs.html>

NEW QUESTION 127

Which of the following features of the Elastic Beanstalk service will allow you to perform a Blue Green Deployment

- A. Rebuild Environment

- B. Swap Environment
- C. Swap URL's
- D. Environment Configuration

Answer: C

Explanation:

With the Swap url feature, you can keep a version of your environment ready. And when you are ready to cut over, you can just use the swap url feature to switch over to your new environment

For more information on swap url feature, please refer to the below link:

- <http://docs.aws.amazon.com/elasticbeanstalk/latest/dg/using-features.CNAMCSwap.html>

NEW QUESTION 131

You are deciding on a deployment mechanism for your application. Which of the following deployment mechanisms provides the fastest rollback after failure.

- A. Rolling-Immutable
- B. Canary
- C. Rolling-Mutable
- D. Blue/Green

Answer: D

Explanation:

In Blue Green Deployments, you will always have the previous version of your application available.

So anytime there is an issue with a new deployment, you can just quickly switch back to the older version of your application.

For more information on Blue Green Deployments, please refer to the below link: <https://docs.cloudfoundry.org/devguide/deploy-apps/blue-green.html>

NEW QUESTION 136

There is a requirement for a vendor to have access to an S3 bucket in your account. The vendor already has an AWS account. How can you provide access to the vendor on this bucket.

- A. Create a new IAM user and grant the relevant access to the vendor on that bucket.
- B. Create a new IAM group and grant the relevant access to the vendor on that bucket.
- C. Create a cross-account role for the vendor account and grant that role access to the S3 bucket.
- D. Create an S3 bucket policy that allows the vendor to read from the bucket from their AWS account.

Answer: C

Explanation:

The AWS documentation mentions

You share resources in one account with users in a different account. By setting up cross-account access in this way, you don't need to create individual IAM users in each account. In addition, users don't have to sign out of one account and sign into another in order to access resources that are in different AWS accounts. After configuring the role, you see how to use the role from the AWS Management Console, the AWS CLI, and the API

For more information on Cross Account Roles Access, please refer to the below link:

- http://docs.aws.amazon.com/IAM/latest/UserGuide/tutorial_cross-account-with-roles.html

NEW QUESTION 141

You have launched a cloudformation template, but are receiving a failure notification after the template was launched. What is the default behavior of Cloudformation in such a case

- A. It will rollback all the resources that were created up to the failure point.
- B. It will keep all the resources that were created up to the failure point.
- C. It will prompt the user on whether to keep or terminate the already created resources
- D. It will continue with the creation of the next resource in the stack

Answer: A

Explanation:

The AWS Documentation mentions

AWS Cloud Formation ensures all stack resources are created or deleted as appropriate. Because AWS CloudFormation treats the stack resources as a single unit,

they must all be created or deleted successfully for the stack to be created or deleted. If a resource cannot be created, AWS CloudFormation rolls the stack back and automatically deletes any resources that were created.

For more information on Cloudformation, please refer to the below link: <http://docs.aws.amazon.com/AWSCloudFormation/latest/UserGuide/stacks.html>

NEW QUESTION 142

Which of the below services can be used to deploy application code content stored in Amazon S3 buckets, GitHub repositories, or Bitbucket repositories

- A. CodeCommit
- B. CodeDeploy
- C. S3Lifecycle
- D. Route53

Answer: B

Explanation:

The AWS documentation mentions

AWS CodeDeploy is a deployment service that automates application deployments to Amazon EC2 instances or on-premises instances in your own facility.

For more information on Code Deploy please refer to the below link:

- <http://docs.ws.amazon.com/codedeploy/latest/userguide/welcome.html>

NEW QUESTION 144

Which of the following credentials types are supported by AWSCodeCommit? Select 3 Options

- A. Git Credentials
- B. SSH Keys
- C. User name/password
- D. AWS Access Keys

Answer: ABD

Explanation:

The AWS documentation mentions

I AM supports AWS CodeCommit with three types of credentials:

Git credentials, an IAM -generated user name and password pair you can use to communicate with AWS CodeCommit repositories over HTTPS.

SSH keys, a locally generated public-private key pair that you can associate with your IAM user to communicate with AWS CodeCommit repositories over SSH.

AWS access keys, which you can use with the credential helper included with the AWS CLI to communicate with AWS CodeCommit repositories over HTTPS.

https://docs.aws.amazon.com/IAM/latest/UserGuide/id_credentials_ssh-keys.html

NEW QUESTION 149

Which of the following is the right sequence of initial steps in the deployment of application revisions using Code Deploy

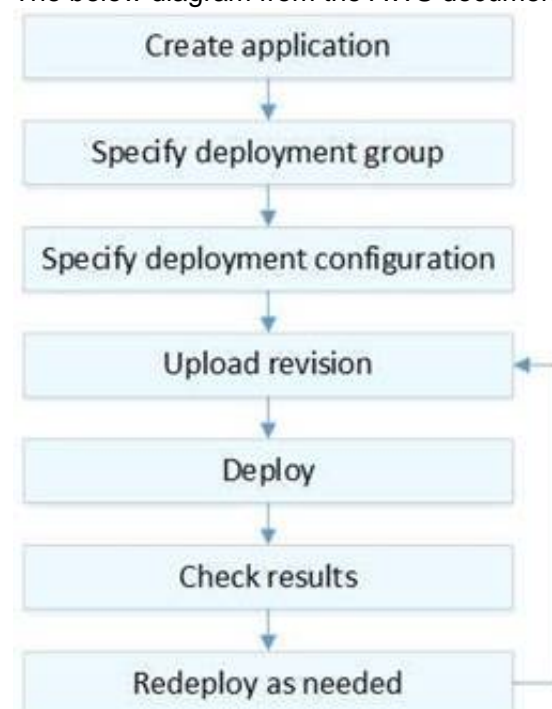
- 1) Specify deployment configuration
- 2) Upload revision
- 3) Create application
- 4) Specify deployment group

- A. 3, 2, 1 and 4
- B. 3,1,2 and 4
- C. 3,4,1 and 2
- D. 3,4,2 and 1

Answer: C

Explanation:

The below diagram from the AWS documentation shows the deployment steps



For more information on the deployment steps please refer to the below link:

- <http://docs.aws.amazon.com/codedeploy/latest/userguide/deployment-steps.html>

NEW QUESTION 150

You have an Opswork stack setup in AWS. You want to install some updates to the Linux instances in the stack. Which of the following can be used to publish those updates. Choose 2 answers from the options given below

- A. Create and start new instances to replace your current online instance
- B. Then delete the current instances.
- C. Use Auto-scaling to launch new instances and then delete the older instances
- D. On Linux-based instances in Chef 11.10 or older stacks, run the Update Dependencies stack command
- E. Delete the stack and create a new stack with the instances and their relevant updates

Answer: AC

Explanation:

As per AWS documentation.

By default, AWS OpsWorks Stacks automatically installs the latest updates during setup, after an instance finishes booting. AWS OpsWorks Stacks does not automatically install updates after an instance is online, to avoid interruptions such as restarting application servers. Instead, you manage updates to your online instances yourself, so you can minimize any disruptions.

We recommend that you use one of the following to update your online instances.

- Create and start new instances to replace your current online instances. Then delete the current instances. The new instances will have the latest set of security patches installed during setup.
 - On Linux-based instances in Chef 11.10 or older stacks, run the Update Dependencies stack command, which installs the current set of security patches and other updates on the specified instances.
- More information is available at: <https://docs.aws.amazon.com/opsworks/latest/userguide/workingsecurity-updates.html>

NEW QUESTION 154

Which of the following environment types are available in the Elastic Beanstalk environment. Choose 2 answers from the options given below

- A. Single Instance
- B. Multi-Instance
- C. Load Balancing Autoscaling
- D. SQS, Autoscaling

Answer: AC

Explanation:

The AWS Documentation mentions

In Elastic Beanstalk, you can create a load-balancing, autoscaling environment or a single-instance environment. The type of environment that you require depends

on the application that you deploy.

When you go onto the Configuration for your environment, you will be able to see the Environment type from there

NEW QUESTION 156

You have a requirement to automate the creation of EBS Snapshots. Which of the following can be used to achieve this in the best way possible.

- A. Create a powershell script which uses the AWS CLI to get the volumes and then run the script as a cron job.
- B. Use the AWSConfig service to create a snapshot of the AWS Volumes
- C. Use the AWS CodeDeploy service to create a snapshot of the AWS Volumes
- D. Use Cloudwatch Events to trigger the snapshots of EBS Volumes

Answer: D

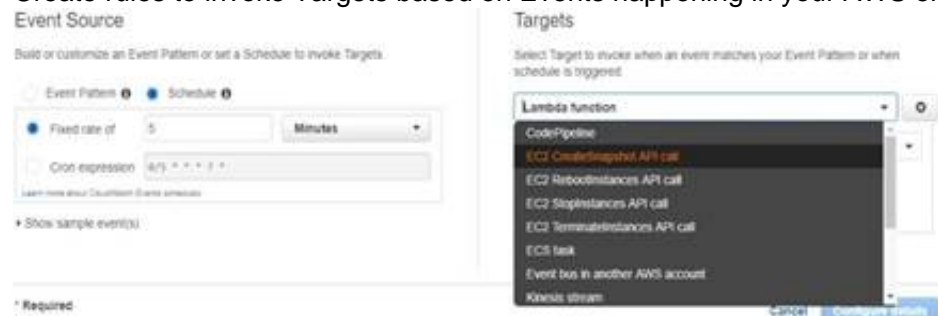
Explanation:

The best is to use the inbuilt service from Cloudwatch, as Cloud watch Events to automate the creation of CBS Snapshots. With Option A, you would be restricted to

running the powershell script on Windows machines and maintaining the script itself. And then you have the overhead of having a separate instance just to run that script.

When you go to Cloudwatch events, you can use the Target as EC2 CreateSnapshot API call as shown below.

Create rules to invoke Targets based on Events happening in your AWS environment.



The AWS Documentation mentions

Amazon Cloud Watch Cvents delivers a near real-time stream of system events that describe changes in Amazon Web Services (AWS) resources. Using simple rules

that you can quickly set up, you can match events and route them to one or more target functions or streams. Cloud Watch Cvents becomes aware of operational changes as they occur. Cloud Watch Cvents responds to these operational changes and takes corrective action as necessary, by sending messages to respond to the environment, activating functions, making changes, and capturing state information. For more information on Cloud watch Cvents, please visit the below U RL:

- <http://docs.aws.amazon.com/AmazonCloudWatch/latest/events/WhatIsCloudWatchCvents.html>

NEW QUESTION 157

An audit is going to be conducted for your company's AWS account. Which of the following steps will ensure that the auditor has the right access to the logs of your AWS account

- A. Enable S3 and ELB log
- B. Send the logs as a zip file to the IT Auditor.
- C. Ensure CloudTrail is enable
- D. Create a user account for the Auditor and attach the AWSCloudTrailReadOnlyAccess Policy to the user.
- E. Ensure that Cloudtrail is enable
- F. Create a user for the IT Auditor and ensure that full control is given to the userfor Cloudtrail.D- Enable Cloudwatch log
- G. Create a user for the IT Auditor and ensure that full control is given to the userfor the Cloudwatch logs.

Answer: B

Explanation:

User details

User name	testtuser
AWS access type	AWS Management Console access - with a password
Console password type	Autogenerated
Require password reset	Yes
Permissions boundary	Permissions boundary is not set

Permissions summary

The following policies will be attached to the user shown above.

Type	Name
Managed policy	AWSCloudTrailReadOnlyAccess
Managed policy	iamUserChangePassword

Access

[Learn More](#)

The AWS Documentation clearly mentions the below

AWS CloudTrail is an AWS service that helps you enable governance, compliance, and operational and risk auditing of your AWS account. Actions taken by a user, role, or an AWS service are recorded as events in CloudTrail. Events include actions taken in the AWS Management Console, AWS Command Line Interface, and AWS SDKs and APIs.

For more information on Cloudtrail, please visit the below URL:

- <http://docs.aws.amazon.com/awscloudtrail/latest/userguide/cloudtrail-user-guide.html>

NEW QUESTION 161

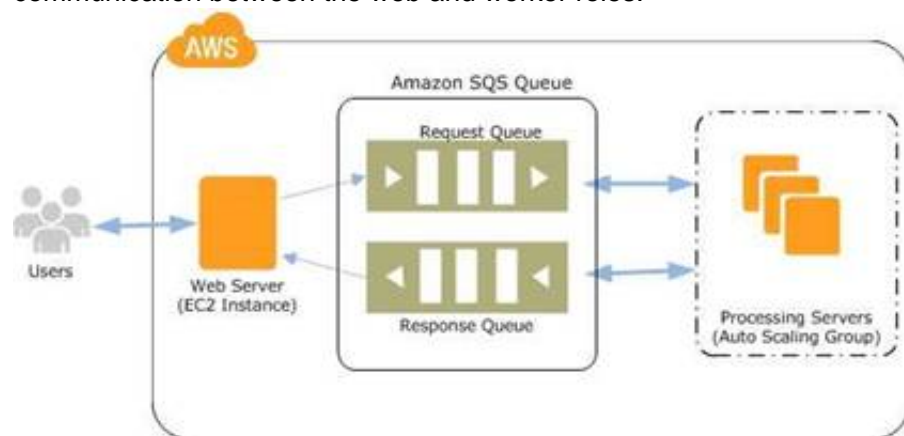
Which of the following design strategies is ideal when designing loosely coupled systems. Choose 2 answers from the options given below

- A. Having the web and worker roles running on the same set of EC2 Instances
- B. Having the web and worker roles running on separate EC2 Instances
- C. Using SNS to establish communication between the web and worker roles
- D. Using SQS to establish communication between the web and worker roles

Answer: BD

Explanation:

The below diagram shows the ideal design which uses SQS and separate environments for web and worker processes. The SQS queue manages the communication between the web and worker roles.



One example is the way Elastic beanstalk manages worker environments. For more information on this, please visit the below URL:

- ? <http://docs.aws.amazon.com/elasticbeanstalk/latest/dg/using-features-managing-env-tiers.html>

NEW QUESTION 164

You are currently using Elastic Beanstalk to host your production environment. You need to rollout updates to your application hosted on this environment. This is a critical application which is why there is a requirement that the rollback, if required, should be carried out with the least amount of downtime. Which of the following deployment strategies would ideally help achieve this purpose

- A. Create a Cloudformation template with the same resources as those in the Elastic beanstalk environmen
- B. If the deployment fails, deploy the Cloudformation template.
- C. Use Rolling updates in Elastic Beanstalk so that if the deployment fails, the rolling updates feature would roll back to the last deployment.
- D. Create another parallel environment in elastic beanstal
- E. Use the Swap URL feature.
- F. Create another parallel environment in elastic beanstal
- G. Create a new Route53 Domain name for the new environment and release that url to the users.

Answer: C

Explanation:

Since the requirement is to have the least amount of downtime, the ideal way is to create a blue green deployment environment and then use the Swap URL feature

to swap environments for the new deployment and then do the swap back, incase the deployment fails.

The AWS Documentation mentions the following on the SWAP url feature of Elastic Beanstalk

Because Elastic Beanstalk performs an in-place update when you update your application versions, your application may become unavailable to users for a short period of time. It is possible to avoid this downtime by performing a blue/green deployment, where you deploy the new version to a separate environment, and then swap CNAMEs of the two environments to redirect traffic to the new version instantly.

NEW QUESTION 168

You have a legacy application running that uses an m4.large instance size and cannot scale with Auto Scaling, but only has peak performance 5% of the time. This is a huge waste of resources and money so your Senior Technical Manager has set you the task of trying to reduce costs while still keeping the legacy application running as it should. Which of the following would best accomplish the task your manager has set you? Choose the correct answer from the options below

- A. Use a T2burstable performance instance.
- B. Use a C4.large instance with enhanced networking.
- C. Use two t2.nano instances that have single Root I/O Visualization.
- D. Use t2.nano instance and add spot instances when they are required.

Answer: A

Explanation:

The aws documentation clearly indicates using T2 CC2 instance types for those instances which don't use CPU that often.

T2

T2 instances are Burstable Performance Instances that provide a baseline level of CPU performance with the ability to burst above the baseline.

T2 Unlimited instances can sustain high CPU performance for as long as a workload needs it. For most general-purpose workloads, T2 Unlimited instances will provide ample performance without any additional charges. If the instance needs to run at higher CPU utilization for a prolonged period, it can also do so at a flat additional charge of 5 cents per vCPU-hour.

The baseline performance and ability to burst are governed by CPU Credits. T2 instances receive CPU Credits continuously at a set rate depending on the instance size, accumulating CPU Credits when they are idle, and consuming CPU credits when they are active. T2 instances are a good choice for a variety of general-purpose workloads including micro-services, low-latency interactive applications, small and medium databases, virtual desktops, development, build and stage environments, code repositories, and product prototypes. For more information see Burstable Performance Instances.

For more information on F_C2 instance types please see the below link: <https://aws.amazon.com/ec2/instance-types/>

NEW QUESTION 173

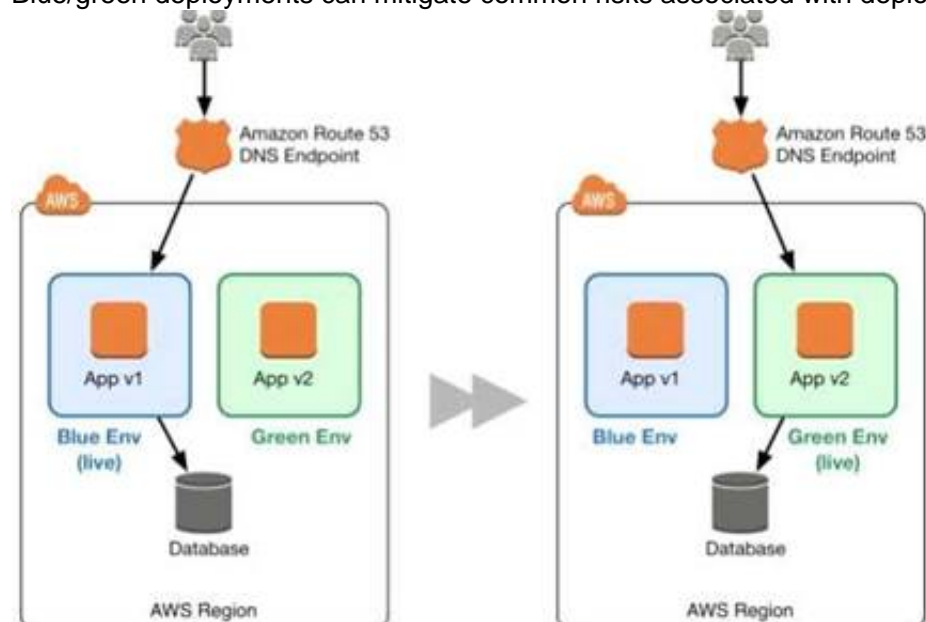
A company has developed a Ruby on Rails content management platform. Currently, OpsWorks with several stacks for dev, staging, and production is being used to deploy and manage the application. Now the company wants to start using Python instead of Ruby. How should the company manage the new deployment? Choose the correct answer from the options below

- A. Update the existing stack with Python application code and deploy the application using the deploy life-cycle action to implement the application code.
- B. Create a new stack that contains a new layer with the Python code
- C. To cut over to the new stack the company should consider using Blue/Green deployment
- D. Create a new stack that contains the Python application code and manage separate deployments of the application via the secondary stack using the deploy lifecycle action to implement the application code.
- E. Create a new stack that contains the Python application code and manages separate deployments of the application via the secondary stack.

Answer: B

Explanation:

Blue/green deployment is a technique for releasing applications by shifting traffic between two identical environments running different versions of the application. Blue/green deployments can mitigate common risks associated with deploying software, such as downtime and rollback capability



Please find the below link on a white paper for blue green deployments

- https://d03wsstatic.com/whitepapers/AWS_Blue_Green_Deployments.pdf

NEW QUESTION 174

You are working as an AWS Devops admins for your company. You are in-charge of building the infrastructure for the company's development teams using Cloudformation. The template will include building the VPC and networking components, installing a LAMP stack and securing the created resources. As per the AWS best practices what is the best way to design this template

- A. Create a single cloudformation template to create all the resources since it would be easier from the maintenance perspective.
- B. Create multiple cloudformation templates based on the number of VPC's in the environment.
- C. Create multiple cloudformation templates based on the number of development groups in the environment.
- D. Create multiple cloudformation templates for each set of logical resources, one for networking, the other for LAMP stack creation.

Answer: D

Explanation:

Creating multiple cloudformation templates is an example of using nested stacks. The advantage of using nested stacks is given below as per the AWS documentation

As your infrastructure grows, common patterns can emerge in which you declare the same components in each of your templates. You can separate out these common components and create dedicated templates for them. That way, you can mix and match different templates but use nested stacks to create a single, unified stack. Nested stacks are stacks that create other stacks. To create nested stacks, use the AWS::CloudFormation::Stack resource in your template to reference other templates.

For more information on Cloudformation best practices, please refer to the below link: <http://docs.aws.amazon.com/AWSCloudFormation/latest/UserGuide/best-practices.html>

NEW QUESTION 178

Your security officer has told you that you need to tighten up the logging of all events that occur on your AWS account. He wants to be able to access all events that occur on the account across all regions quickly and in the simplest way possible. He also wants to make sure he is the only person that has access to these events in the most secure way possible. Which of the following would be the best solution to assure his requirements are met? Choose the correct answer from the options below

- A. Use CloudTrail to log all events to one S3 bucket
- B. Make this S3 bucket only accessible by your security officer with a bucket policy that restricts access to his user only and also add MFA to the policy for a further level of security
- C. ^/
- D. Use CloudTrail to log all events to an Amazon Glacier Vault
- E. Make sure the vault access policy only grants access to the security officer's IP address.
- F. Use CloudTrail to send all API calls to CloudWatch and send an email to the security officer every time an API call is made
- G. Make sure the emails are encrypted.
- H. Use CloudTrail to log all events to a separate S3 bucket in each region as CloudTrail cannot write to a bucket in a different region
- I. Use MFA and bucket policies on all the different buckets.

Answer: A

Explanation:

AWS CloudTrail is a service that enables governance, compliance, operational auditing, and risk auditing of your AWS account. With CloudTrail, you can log, continuously monitor, and retain events related to API calls across your AWS infrastructure. CloudTrail provides a history of AWS API calls for your account, including API calls made through the AWS Management Console, AWS SDKs, command line tools, and other AWS services. This history simplifies security analysis, resource change tracking, and troubleshooting.

You can design CloudTrail to send all logs to a central S3 bucket. For more information on CloudTrail, please visit the below URL:

? <https://aws.amazon.com/cloudtrail/>

NEW QUESTION 181

Your company is planning to develop an application in which the front end is in .Net and the backend is in DynamoDB. There is an expectation of a high load on the application. How could you ensure the scalability of the application to reduce the load on the DynamoDB database? Choose an answer from the options below.

- A. Add more DynamoDB databases to handle the load.
- B. Increase write capacity of Dynamo DB to meet the peak loads
- C. Use SQS to assist and let the application pull messages and then perform the relevant operation in DynamoDB.
- D. Launch DynamoDB in Multi-AZ configuration with a global index to balance writes

Answer: C

Explanation:

When the idea comes for scalability then SQS is the best option. Normally DynamoDB is scalable, but since one is looking for a cost effective solution, the messaging in SQS can assist in managing the situation mentioned in the question.

Amazon Simple Queue Service (SQS) is a fully-managed message queuing service for reliably communicating among distributed software components and microservices - at any scale. Building applications from individual components that each perform a discrete function improves scalability and reliability, and is best practice design for modern applications. SQS makes it simple and cost-effective to decouple and coordinate the components of a cloud application. Using SQS, you can send, store, and receive messages between software components at any volume, without losing messages or requiring other services to be always available

For more information on SQS, please refer to the below URL:

• <https://aws.amazon.com/sqs/>

NEW QUESTION 186

Which of the following features of the Autoscaling Group ensures that additional instances are neither launched or terminated before the previous scaling activity takes effect

- A. Termination policy
- B. Cool down period
- C. Ramp up period
- D. Creation policy

Answer: B

Explanation:

The AWS documentation mentions

The Auto Scaling cooldown period is a configurable setting for your Auto Scaling group that helps to ensure that Auto Scaling doesn't launch or terminate additional

instances before the previous scaling activity takes effect. After the Auto Scaling group dynamically scales using a simple scaling policy. Auto Scaling waits for the cooldown period to complete before resuming scaling activities. When you manually scale your Auto Scaling group, the default is not to wait for the cooldown period,

but you can override the default and honor the cooldown period. If an instance becomes unhealthy.

Auto Scaling does not wait for the cooldown period to complete before replacing the unhealthy instance

For more information on the Cool down period, please refer to the below URL:

• <http://docs.aws.amazon.com/autoscaling/latest/userguide/Cooldown.html>

NEW QUESTION 187

Your finance supervisor has set a budget of 2000 USD for the resources in AWS. Which of the following is the simplest way to ensure that you know when this threshold is being reached.

- A. Use Cloudwatch events to notify you when you reach the threshold value
- B. Use the Cloudwatch billing alarm to notify you when you reach the threshold value
- C. Use Cloudwatch logs to notify you when you reach the threshold value

D. Use SQS queues to notify you when you reach the threshold value

Answer: B

Explanation:

The AWS documentation mentions

You can monitor your AWS costs by using Cloud Watch. With Cloud Watch, you can create billing alerts that notify you when your usage of your services exceeds thresholds that you define. You specify these threshold amounts when you create the billing alerts.

When your usage exceeds these amounts, AWS sends you an

email notification. You can also sign up to receive notifications when AWS prices change. For more information on billing alarms, please refer to the below URL:

- <http://docs.aws.amazon.com/awsaccountbilling/latest/aboutv2/monitor-charges.html>

NEW QUESTION 188

There is a requirement for an application hosted on a VPC to access the On-premise LDAP server. The VPC and the On-premise location are connected via an IPsec VPN. Which of the below are the right options for the application to authenticate each user. Choose 2 answers from the options below

- A. Develop an identity broker that authenticates against IAM security Token service to assume a IAM role in order to get temporary AWS security credentials The application calls the identity broker to get AWS temporary security credentials.
- B. The application authenticates against LDAP and retrieves the name of an IAM role associated with the user
- C. The application then calls the IAM Security Token Service to assume that IAM role
- D. The application can use the temporary credentials to access any AWS resources.
- E. Develop an identity broker that authenticates against LDAP and then calls IAM Security Token Service to get IAM federated user credential
- F. The application calls the identity broker to get IAM federated user credentials with access to the appropriate AWS service.
- G. The application authenticates against LDAP the application then calls the AWS identity and Access Management (IAM) Security service to log in to IAM using the LDAP credentials the application can use the IAM temporary credentials to access the appropriate AWS service.

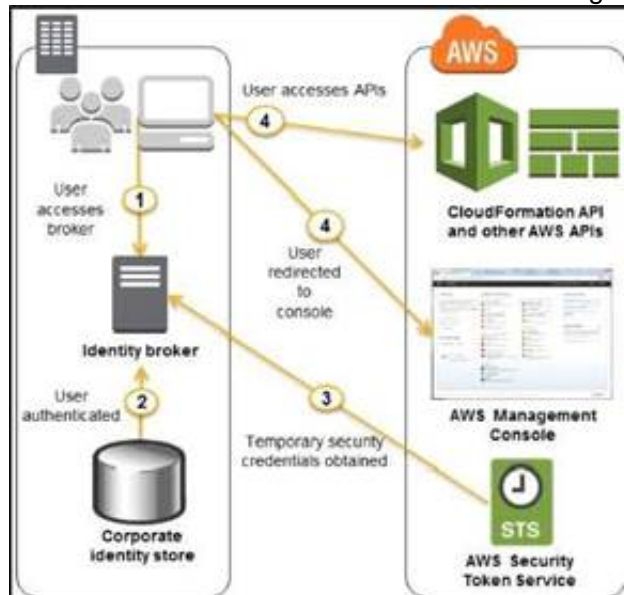
Answer: BC

Explanation:

When you have the need for an in-premise environment to work with a cloud environment, you would normally have 2 artefacts for authentication purposes

- An identity store - So this is the on-premise store such as Active Directory which stores all the information for the user's and the groups they belong to.
- An identity broker - This is used as an intermediate agent between the on-premise location and the cloud environment. In Windows you have a system known as Active Directory Federation services to provide this facility.

Hence in the above case, you need to have an identity broker which can work with the identity store and the Security Token service in AWS. An example diagram of how this works from the AWS documentation is given below.



For more information on federated access, please visit the below link: http://docs.aws.amazon.com/IAM/latest/UserGuide/id_roles_common-scenarios_federated-users.html

NEW QUESTION 192

A custom script needs to be passed to a new Amazon Linux instances created in your Auto Scaling group. Which feature allows you to accomplish this?

- A. User data
- B. EC2Config service
- C. IAM roles
- D. AWSConfig

Answer: A

Explanation:

When you configure an instance during creation, you can add custom scripts to the User data section. So in Step 3 of creating an instance, in the Advanced Details section, we can enter custom scripts in the User Data section. The below script installs Perl during the instance creation of the EC2 instance.

Step 3: Configure Instance Details

Amazon EC2 console: Configure Instance Details

Tenancy ⓘ Shared - Run a shared hardware instance
Additional charges will apply for dedicated tenancy.

▼ Network interfaces ⓘ

Device	Network Interface	Subnet	Primary IP	Secondary IP addresses
em0	New network interface	subnet-95ed6d05	Auto-assign	Add IP

Add Device

▼ Advanced Details

User data ⓘ As text As file Input is already base64 encoded

```
yum install perl-Switch perl-DateTime perl-Sys-Syslog perl-LWP-Protocol-https
-y
```

For more information on user data please refer to the URL:

- <http://docs.aws.amazon.com/AWSEC2/latest/UserGuide/ec2-instance-metadata.html>

NEW QUESTION 193

A user is using Cloudformation to launch an EC2 instance and then configure an application after the instance is launched. The user wants the stack creation of ELB and AutoScaling to wait until the EC2 instance is launched and configured properly. How can the user configure this?

- It is not possible that the stack creation will wait until one service is created and launched.
- The user can use the `HoldCondition` resource to wait for the creation of the other dependent resources.
- The user can use the `DependentCondition` resource to hold the creation of the other dependent resources.
- The user can use the `WaitCondition` resource to hold the creation of the other dependent resources.

Answer: D

Explanation:

You can use a wait condition for situations like the following:

To coordinate stack resource creation with configuration actions that are external to the stack creation

To track the status of a configuration process

For more information on Cloudformation Wait condition please visit the link

<http://docs.aws.amazon.com/AWSCloudFormation/latest/UserGuide/aws-properties-waitcondition.html>

NEW QUESTION 194

A gaming company adopted AWS Cloud Formation to automate load-testing of their games. They have created an AWS Cloud Formation template for each gaming environment and one for the load-testing stack. The load-testing stack creates an Amazon Relational Database Service (RDS) PostgreSQL database and two web servers running on Amazon Elastic Compute Cloud (EC2) that send HTTP requests, measure response times, and write the results into the database. A test run usually takes between 15 and 30 minutes. Once the tests are done, the AWS Cloud Formation stacks are torn down immediately. The test results written to the Amazon RDS database must remain accessible for visualization and analysis.

Select possible solutions that allow access to the test results after the AWS Cloud Formation load - testing stack is deleted.

Choose 2 answers.

- Define an Amazon RDS Read-Replica in the load-testing AWS Cloud Formation stack and define a dependency relation between master and replica via the `Depends On` attribute.
- Define an update policy to prevent deletion of the Amazon RDS database after the AWS Cloud Formation stack is deleted.
- Define a deletion policy of type `Retain` for the Amazon RDS resource to assure that the RDS database is not deleted with the AWS Cloud Formation stack.
- Define a deletion policy of type `Snapshot` for the Amazon RDS resource to assure that the RDS database can be restored after the AWS Cloud Formation stack is deleted.
- Define automated backups with a backup retention period of 30 days for the Amazon RDS database and perform point-in-time recovery of the database after the AWS CloudFormation stack is deleted.

Answer: CD

Explanation:

With the Deletion Policy attribute you can preserve or (in some cases) backup a resource when its stack is deleted. You specify a `DeletionPolicy` attribute for each resource that you want to control. If a resource has no `DeletionPolicy` attribute, AWS Cloud Formation deletes the resource by default.

To keep a resource when its stack is deleted, specify `Retain` for that resource. You can use `retain` for any resource. For example, you can retain a nested stack, S3 bucket, or EC2 instance so that you can continue to use or modify those resources after you delete their stacks.

For more information on Deletion policy, please visit the below url <http://docs.aws.amazon.com/AWSCloudFormation/latest/UserGuide/aws-attribute-deletionpolicy.html>

NEW QUESTION 197

Which of the below 3 things can you achieve with the Cloudwatch logs service? Choose 3 options.

- Record API calls for your AWS account and delivers log files containing API calls to your Amazon S3 bucket
- Send the log data to AWS Lambda for custom processing or to load into other systems
- Stream the log data to Amazon Kinesis
- Stream the log data into Amazon Elasticsearch in near real-time with Cloud Watch Log subscriptions.

Answer: BCD

Explanation:

You can use Amazon CloudWatch Logs to monitor, store, and access your log files from Amazon Elastic Compute Cloud (Amazon EC2) instances, AWS CloudTrail, and other sources. You can then retrieve the associated log data from CloudWatch Logs.

For more information on Cloudwatch logs, please visit the below URL <http://docs.aws.amazon.com/AmazonCloudWatch/latest/logs/WhatIsCloudWatchLogs.html>

NEW QUESTION 200

Your company is using an Autoscaling Group to scale out and scale in instances. There is an expectation of a peak in traffic every Monday at 8am. The traffic is then expected to come down before the weekend on Friday 5pm. How should you configure Autoscaling in this?

- A. Create dynamic scaling policies to scale up on Monday and scale down on Friday
- B. Create a scheduled policy to scale up on Friday and scale down on Monday
- C. Create a scheduled policy to scale up on Monday and scale down on Friday
- D. Manually add instances to the Autoscaling Group on Monday and remove them on Friday

Answer: C

Explanation:

The AWS Documentation mentions the following for Scheduled scaling

Scaling based on a schedule allows you to scale your application in response to predictable load changes. For example, every week the traffic to your web application starts to increase on Wednesday, remains high on Thursday, and starts to decrease on Friday. You can plan your scaling activities based on the predictable traffic patterns of your web application.

For more information on scheduled scaling for Autoscaling, please visit the below URL

- http://docs.aws.amazon.com/autoscaling/latest/userguide/schedule_time.html

NEW QUESTION 203

You are working for a company that has an on-premise infrastructure. There is now a decision to move to AWS. The plan is to move the development environment first. There are a lot of custom-based applications that need to be deployed for the development community. Which of the following can help to implement the application for the development team?

Choose 2 answers from the options below.

- A. Create Docker containers for the custom application components.
- B. Use OpsWorks to deploy the Docker containers.
- C. Use Elastic Beanstalk to deploy the Docker containers.
- D. Use CloudFormation to deploy the Docker containers.

Answer: AC

Explanation:

The AWS documentation states the following for Docker containers on Elastic Beanstalk

Elastic Beanstalk supports the deployment of web applications from Docker containers. With Docker containers, you can define your own runtime environment. You can choose your own platform, programming language, and any application dependencies (such as package managers or tools), that aren't supported by other platforms. Docker containers are self-contained and include all the configuration information and software your web application requires to run.

For more information on Docker containers and Elastic Beanstalk, please visit the below URL

http://docs.aws.amazon.com/elasticbeanstalk/latest/dg/create_deploy_docker.html

NEW QUESTION 205

You are currently planning on using Autoscaling to launch instances which have an application installed. Which of the following methods will help ensure the instances are up and running in the shortest span of time to take in traffic from the users?

- A. Log into each instance and install the software.
- B. Use UserData to launch scripts to install the software.
- C. Use Docker containers to launch the software.
- D. Use AMIs which already have the software installed.

Answer: D

Explanation:

The AMI will be the fastest because it will already have the software installed. You can customize the instance that you launch from a public AMI and then save that configuration as a custom AMI for your own use. Instances that you launch from your AMI use all the customizations that you've made.

For more information on AMIs please refer to the below link <http://docs.aws.amazon.com/AWSC2/latest/UserGuide/AMIs.html>

NEW QUESTION 210

Which of the following is not a supported platform on Elastic Beanstalk?

- A. Packer Builder
- B. Go
- C. Node.js
- D. Java SE
- E. Kubernetes

Answer: E

Explanation:

Answer-C

Below is the list of supported platforms

*Packer Builder

*Single Container Docker

*Multicontainer Docker

*Preconfigured Docker

*Go

*Java SE

*Java with Tomcat

*NET on Windows Server with IIS

*Node.js

*PHP

*Python

*Ruby

For more information on the supported platforms please refer to the below link

<http://docs.aws.amazon.com/elasticbeanstalk/latest/dg/concepts.platforms.html>

NEW QUESTION 211

You have a number of Cloudformation stacks in your IT organization. Which of the following commands will help see all the cloudformation stacks which have a completed status?

- A. describe-stacks
- B. list-stacks
- C. stacks-complete
- D. list-templates

Answer: B

Explanation:

The following is the description of the list-stacks command

Returns the summary information for stacks whose status matches the specified StackStatusFilter.

Summary information for stacks that have been deleted is kept for 90 days after the stack is deleted. If no stack-status-filter is specified, summary information for all stacks is returned (including existing stacks and stacks that have been deleted).

For more information on the list-stacks command please visit the below link <http://docs.aws.amazon.com/cli/latest/reference/cloudformation/list-stacks.html>

NEW QUESTION 212

Your CTO is very worried about the security of your AWS account. How best can you prevent hackers from completely hijacking your account?

- A. Use short but complex password on the root account and any administrators.
- B. Use AWS IAM Geo-Lock and disallow anyone from logging in except for in your city.
- C. Use MFA on all users and accounts, especially on the root account.
- D. Don't write down or remember the root account password after creating the AWS account.

Answer: C

Explanation:

The AWS documentation mentions the following on MFA

AWS Multi-Factor Authentication (MFA) is a simple best practice that adds an extra layer of protection on top of your user name and password. With MFA enabled, when a user signs in to an AWS website, they will be prompted for their user name and password (the first factor—what they know), as well as for an authentication code from their AWS MFA device (the second factor—what they have). Taken together, these multiple factors provide increased security for your AWS account settings and resources.

For more information on MFA please visit the below link <https://aws.amazon.com/iam/details/mfa/>

NEW QUESTION 214

You are a DevOps Engineer in your company. You have been instructed to ensure there is an automated backup solution in place for EBS Volumes. These snapshots need to be retained only for a period of 20 days. How can you achieve this requirement in an efficient manner?

- A. Use the aws ec2 create-volume API to create a snapshot of the EBS Volume
- B. Use the describe-volumes to see those snapshots which are greater than 20 days and then delete them accordingly using the delete-volume API call.
- C. Use Lifecycle policies to push the EBS Volumes to Amazon Glacier
- D. Then use further lifecycle policies to delete the snapshots after 20 days.
- E. Use Lifecycle policies to push the EBS Volumes to Amazon S3. Then use further lifecycle policies to delete the snapshots after 20 days.
- F. Use Amazon Data Lifecycle Manager to automate the process.

Answer: D

Explanation:

Use Amazon Data Lifecycle Manager (Amazon DLM) to automate the creation, retention, and deletion of snapshots taken to back up your Amazon EBS volumes.

Automating snapshot management helps you to:

- Protect valuable data by enforcing a regular backup schedule. Retain backups as required by auditors or internal compliance.
- Reduce storage costs by deleting outdated backups.

For more information, please check the below AWS Docs:

- <https://docs.aws.amazon.com/AWSC2/latest/UserGuide/snapshot-lifecycle.html>

NEW QUESTION 218

You are DevOps Engineer for a large organization. The company wants to start using Cloudformation templates to start building their resources in AWS. You are getting requirements for the templates from various departments, such as the networking, security, application etc. What is the best way to architect these Cloudformation templates?

- A. Use a single Cloudformation template, since this would reduce the maintenance overhead on the templates itself.
- B. Create separate logical templates, for example, a separate template for networking, security, application etc.
- C. Then nest the relevant templates.
- D. Consider using Elastic Beanstalk to create your environments since Cloudformation is not built for such customization.
- E. Consider using Opsworks to create your environments since Cloudformation is not built for such customization.

Answer: B

Explanation:

The AWS documentation mentions the following

As your infrastructure grows, common patterns can emerge in which you declare the same components in each of your templates. You can separate out these

common components and create dedicated templates for them. That way, you can mix and match different templates but use nested stacks to create a single, unified stack. Nested stacks are stacks that create other stacks. To create nested stacks, use the AWS::CloudFormation::Stack resource in your template to reference other templates.
For more information on CloudFormation best practises, please visit the below url <http://docs.aws.amazon.com/AWSCloudFormation/latest/UserGuide/best-practices.html>

NEW QUESTION 220

.....

Thank You for Trying Our Product

* 100% Pass or Money Back

All our products come with a 90-day Money Back Guarantee.

* One year free update

You can enjoy free update one year. 24x7 online support.

* Trusted by Millions

We currently serve more than 30,000,000 customers.

* Shop Securely

All transactions are protected by VeriSign!

100% Pass Your DOP-C01 Exam with Our Prep Materials Via below:

<https://www.certleader.com/DOP-C01-dumps.html>