

70-742 Dumps

Identity with Windows Server 2016

<https://www.certleader.com/70-742-dumps.html>



NEW QUESTION 1

You have a server named Server1 that runs Windows Server 2016. Server1 has the Web Application Proxy role service installed. You are publishing an application named App1 that will use Integrated Windows authentication as shown in the following graphic.

Use the drop-down menus to select the answer area choice that completes each statement based on the information presented in the graphic.

Answer Area

Before you can complete the wizard, you must
[answer choice]

▼
change the external certificate
configure the Backend server SPN
select Enable HTTP to HTTPS redirection

To ensure that users can access App1 externally,
you must change the External URL to [answer choice]

▼
https://app1.contoso.com/app1
http://server02.contoso.com/app1
https://server02.contoso.com/publish/app1

- A. Mastered
- B. Not Mastered

Answer: A

Explanation:

Answer Area

Before you can complete the wizard, you must
[answer choice]

▽
change the external certificate
configure the Backend server SPN
select Enable HTTP to HTTPS redirection

To ensure that users can access App1 externally,
you must change the External URL to [answer choice]

▽
https://app1.contoso.com/app1
http://server02.contoso.com/app1
https://server02.contoso.com/publish/app1

NEW QUESTION 2

A technician named Tech1 is assigned the task of joining the laptops to the domain. The computer accounts of each laptop must be in an organizational unit (OU) that is associated to the department of the user who will use that laptop. The laptop names must start with four characters indicating the department followed by a four-digit number

Tech1 is a member of the Domain Users group only. Tech1 has the administrator logon credentials for all the laptops.

You need Tech1 to join the laptops to the domain. The solution must ensure that the laptops are named correctly, and that the computer accounts of the laptops are in the correct OUs.

Solution: You pre-create the computer account of each laptop in Active Directory users and computers. You instruct Tech1 to sign in to each laptop, and then to run djoin.exe.

Does this meet the goal?

- A. Yes
- B. No

Answer: B

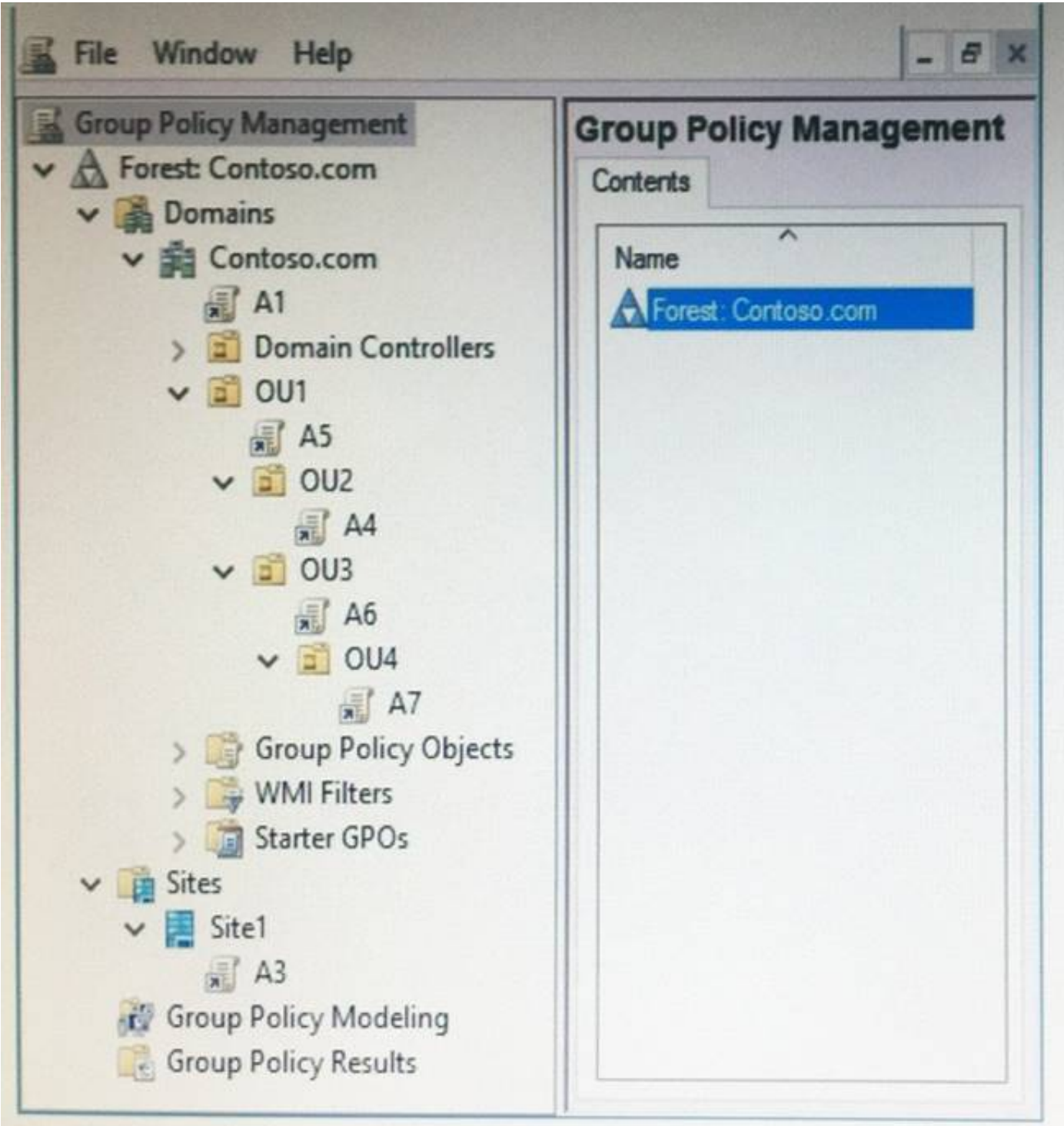
NEW QUESTION 3

Note: This question is part of a series of questions that use the same scenario. For your convenience, the scenario is repeated in each question. Each question presents a different goal and answer choices, but the text of the scenario is exactly the same in each question in this series.

Start of repeated scenario.

Your network contains an Active Directory domain named contoso.com. The domain contains a single site named Site1. All computers are in Site1.

The Group Policy objects (GPOs) for the domain are configured as shown in the exhibit. (Click the Exhibit button.)



The relevant users and client computer in the domain are configured as shown in the following table.

Object name	Object type	Object location
Computer	Computer	OU4
User1	User	OU4
User2	User	OU2

End of repeated scenario.
Which five GPOs will apply to User1 in sequence when the user signs in to Computer1? To answer, move the appropriate GPOs from the list to the answer area and arrange them in the correct order.

GPOs

Answer Area

A1

A3

A4

A5

A6

A7

Answer: A

Explanation:

GPOs	Answer Area
A1	A3
A3	A1
A4	A5
A5	A6
A6	A7
A7	

NEW QUESTION 4

Note: This question is part of a series of questions that use the same or similar answer choices. An answer choice may be correct for more than one question in the series. Each question is independent of the other questions in this series.

Information and details provided in a question apply only to that question.

Your network contains an Active Directory domain named contoso.com. The domain contains 5,000 user accounts.

You have a Group Policy object (GPO) named DomainPolicy that is linked to the domain and a GPO named DCPolicy that is linked to the Domain Controllers organizational unit (OU).

You need to ensure that the members of the Backup Operators group can back up domain controllers. What should you do?

- A. From the Computer Configuration node of DCPolicy, modify Security Settings.
- B. From the Computer Configuration node of DomainPolicy, modify Security Settings.
- C. From the Computer Configuration node of DomainPolicy, modify Administrative Templates.
- D. From the User Configuration node of DCPolicy, modify Security Settings.
- E. From the User Configuration node of DomainPolicy, modify Folder Redirection.
- F. From user Configuration node of DomainPolicy, modify Administrative Templates.
- G. From Preferences in the User Configuration node of DomainPolicy, modify Windows Settings.
- H. From Preferences in the Computer Configuration node of DomainPolicy, modify Windows Settings.

Answer: D

NEW QUESTION 5

Your network contains an Active Directory forest. The forest contains two domain controllers named DC1 and DC2 that run Windows Server 2016. DC1 holds all of the operations master roles.

DC1 experiences a hardware failure.

You plan to use an automated process that will create 1,000 user accounts. You need to ensure that the automated process can complete successfully.

Which command should you run? To answer, select the appropriate options in the answer area.

Answer Area

	▼	-identity "DC2" -OperationMasterRole
Move-ADDirectoryServerOperationMasterRole		
ntdsutil		

	▼			▼
InfrastructureMaster		-Force		
PDCEmulator		Seize pdc		
RIDMaster				
SchemaMaster				

- A. Mastered
- B. Not Mastered

Answer: A

Explanation:

Box 1: Move-ADDirectoryServerOperationMasterRole

Box 2: RIDMaster

Box 3: -Force

NEW QUESTION 6

A technician named Tech1 is assigned the task of joining the laptops to the domain. The computer accounts of each laptop must be in an organizational unit (OU) that is associated to the department of the user who will use that laptop. The laptop names must start with four characters indicating the department followed by a four-digit number

Tech1 is a member of the Domain Users group only. Tech1 has the administrator logon credentials for all the laptops.

You need Tech1 to join the laptops to the domain. The solution must ensure that the laptops are named

correctly, and that the computer accounts of the laptops are in the correct OUs.

Solution: You script the creation of files for an offline domain join, and then you give the files to Tech1. You instruct Tech1 to sign in to each laptop, and then to run djoin.exe.

Does this meet the goal?

A. Yes

B. No

Answer: A

NEW QUESTION 7

Your network contains an Active Directory domain named contoso.com. A Group Policy object (GPO) named GPO1 is linked to contoso.com.

GPO1 has computer configuration polices, user configuration policies and user preferences configured.

You need to ensure that the user preferences in GPO1 apply only to users who sign in to computers that runs Windows 10. All the other settings in GPO1 must be applied, regardless of the computer to which the user sign in.

What should you configure?

A. Security Settings

B. WMI filtering

C. Security Filtering

D. item-level targeting

Answer: D

NEW QUESTION 8

Note: This question is part of a series of questions that use the same scenario. For your convenience, the scenario is repeated in each question. Each question presents a different goal and answer choices, but the text of the scenario is exactly the same in each question in this series.

Start of repeated Scenario:

You work for a company named Contoso, Ltd.

The network contains an Active Directory forest named contoso.com. A forest trust exists between contoso.com and an Active Directory forest named adatum.com.

The contoso.com forest contains the objects configured as shown in the following table. Scenario:

Refer to following table:

Object name	Object type	Group scope	Group type
User1	User	Not applicable	Not applicable
User2	User	Not applicable	Not applicable
Computer1	Computer	Not applicable	Not applicable
Group1	Group	Domain local	Security
Group2	Group	Domain local	Security
Group3	Group	Universal	Security
Group4	Group	Global	Security
Group5	Group	Universal	Security

Group1 and Group 2 contain only user accounts.

Contoso hires a new remote user named User3. User3 will work from home and will use a computer named Computed that runs Windows 10. Computed is currently in a workgroup.

An administrator named Admin1 is a member of the Domain Admins group in the contoso.com domain. From Active Directory Users and Computers, you create an organizational unit (OU) named OU1 in the

contoso.com domain, and then you create a contact named Contact1 in OU1,

An administrator of the adatum.com domain runs the Set-ADUser cmdlet to configure a user named User1 to have a user logon name of User1@litwareinc.com.

End of Scenario:

Admin1 attempts to delete OU1 and receives an error message. You need to ensure that Admin1 can delete OU1. What should you do first?

A. Delete Contact1.

B. Add Admin1 to the Enterprise Admins group.

C. Modify the Object settings for OU1.

D. Disable the Active Directory Recycle Bin.

Answer: C

NEW QUESTION 9

Your network contains an Active Directory domain named contoso.com.

All the accounts of the users in the sales department are in an organizational unit (OU) named SalesOU. An application named App1 is deployed to the user accounts in SalesOU by using a Group Policy object

(GPO) named SalesGPO. You need to set the registry value of

\HKEY_CURRENT_USER\Software\App1\Collaboration to 0.

Solution: You add a user preference that has an Update action. Does this meet the goal?

A. Yes

B. No

Answer: A

NEW QUESTION 10

Note: This question is part of a series of questions that present the same scenario. Each question in the series contains a unique solution that might meet the stated goals. Some question sets might have more than one correct solution, while others might not have a correct solution.

After you answer a question in this section, you will NOT be able to return to it. As a result, these questions will not appear in the review screen.

You deploy a new Active Directory forest.

You need to ensure that you can create a group Managed Service Account (gMSA) for multiple member servers.

Solution: You configure Kerberos constrained delegation on the computer account of each member server. Does this meet the goal?

A. Yes

B. No

Answer: B

NEW QUESTION 10

Your company has multiple branch offices.

The network contains an Active Directory domain named contoso.com.

In one of the branch offices, a new technician is hired to add computers to the domain.

After successfully joining multiple computers to the domain, the technician fails to join anymore computers to the domain.

You need to ensure that the technician can join an unlimited number of computers to the domain. What should you do?

A. Modify the Security settings of the technician's user account.

B. Modify the Security settings of the Computers container.

C. Configure the technician's user account as a managed service account.

D. Run the redircmp.exe command.

Answer: B

NEW QUESTION 11

Your network contains an Active Directory domain named contoso.com. The relevant objects in the domain are configured as shown in the following table.

Object name	Type
Server1	Member server
OU1	Organizational unit (OU)
OU2	Organizational unit (OU)
GPO1	Group Policy object (GPO)
User1	User account
User2	User account
Group1	Global group
Group2	Global group
Group3	Global group

You have the following configurations:

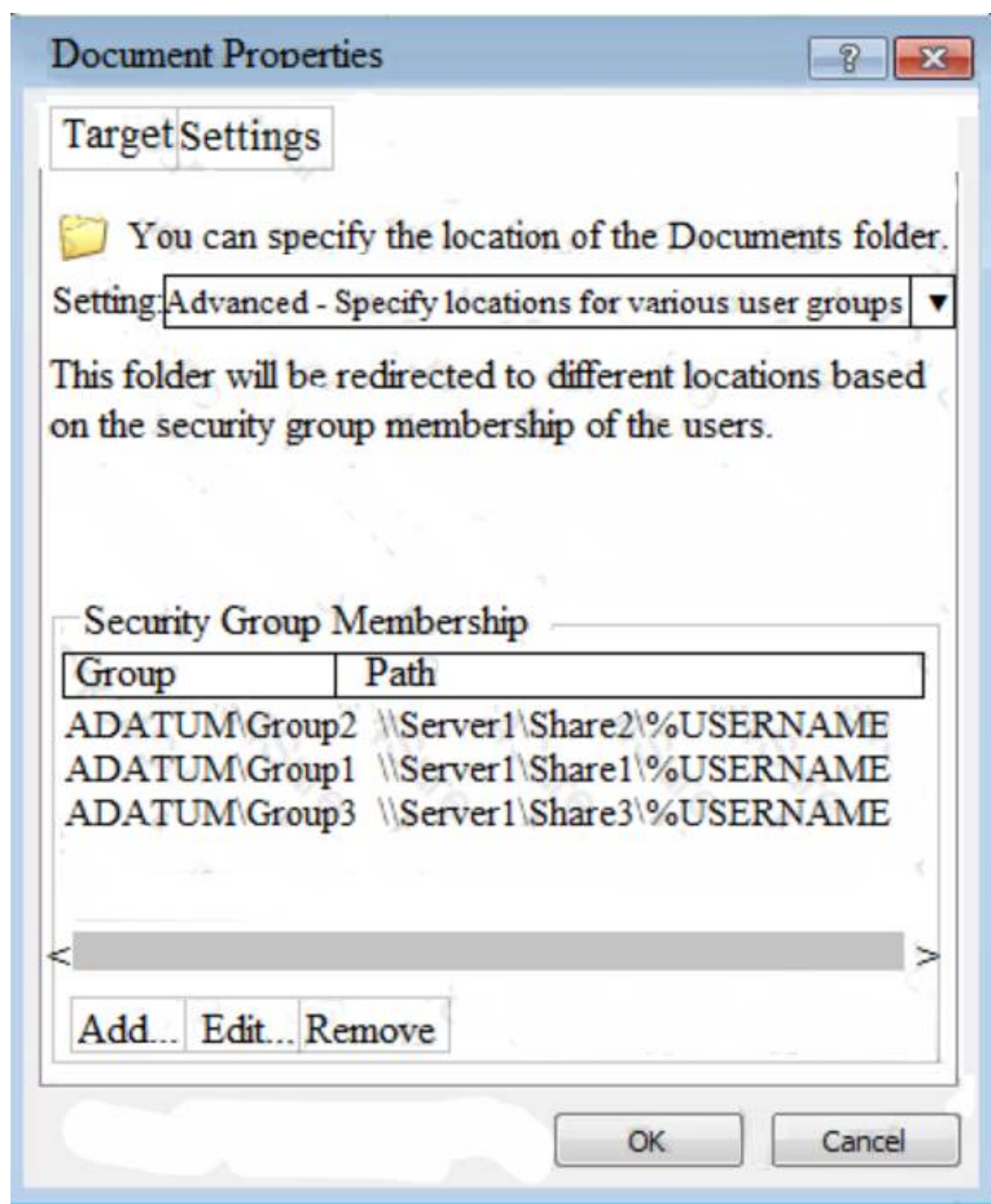
User1 is in OU1 and is a member of Group1 and Group2

User2 is in OU2 and is a member of Group1 and Group3

GPO1 is linked to OU1.

Server1 has three shares named Share1, Share2, and Share3. The Domain Users group permissions to all three shares.

GPO1 is configured as shown in the exhibit. (Click the Exhibit button.)



For each of the following statements, select Yes if the statement is true. Otherwise, select No. NOTE: Each correct selection is worth one point.

Answer Area

Statements	Yes	No
When User1 signs in to Server1, the user's Documents folder will be redirected to \\Server1\Share1.	<input type="radio"/>	<input type="radio"/>
If you add User1 to Group3, and then User1 signs in to Server1, the user's Documents folder will be redirected to \\Server1\Share3.	<input type="radio"/>	<input type="radio"/>
When User2 signs in to Server1, the user's Documents folder will be redirected to \\Server1\Share1	<input type="radio"/>	<input type="radio"/>

- A. Mastered
- B. Not Mastered

Answer: A

Explanation:

Answer Area

Statements

Yes

No

When User1 signs in to Server1, the user's Documents folder will be redirected to \\Server1\Share1.

☒
☐

If you add User1 to Group3, and then User1 signs in to Server1, the user's Documents folder will be redirected to \\Server1\Share3.

☒
☐

When User2 signs in to Server1, the user's Documents folder will be redirected to \\Server1\Share1

☒
☐

NEW QUESTION 13

Your network contains an Active Directory forest named contoso.com. The forest contains three domains named contoso.com, corp.contoso.com, and ext.contoso.com. The forest contains three Active Directory sites named Site1, Site2, and Site3.

You have the three administrators as described in the following table.

Administrator name	Group membership	Domain
Admin1	Domain Admins	Contoso.com
Admin2	Domain Admins	Corp.contoso.com
Admin3	Enterprise Admins	Contoso.com

You create a Group Policy object (GPO) named GPO1.

Which administrator or administrators can link GPO1 to Site2?

- A. Admin1 and Admin2 only
- B. Admin1, Admin2, and Admin3
- C. Admin3 only
- D. Admin1 and Admin3 only

Answer: D

Explanation:

References:

[https://technet.microsoft.com/en-us/library/cc732979\(v=ws.11\).aspx](https://technet.microsoft.com/en-us/library/cc732979(v=ws.11).aspx)

NEW QUESTION 14

Note: This question is part of a series of questions that present the same scenario. Each question in the series contains a unique solution that might meet the stated goals. Some question sets might have more than one correct solution, while others might not have a correct solution.

After you answer a question in this section, you will NOT be able to return to it. As a result, these questions will not appear in the review screen.

Your network contains an Active Directory domain named contoso.com. The domain contains a server named Server1 that runs Windows Server 2016. The Computer account for Server1 is in organizational unit (OU) named OU1.

You create a Group Policy object (GPO) named GPO1 and link GPO1 to OU1.

You need to add a domain user named user1 to the local Administrators group on Server1.

Solution: From the Computer Configuration node of GPO1, you configure the local Users and Groups preference.

Does this meet the goal?

- A. Yes
- B. No

Answer: A

NEW QUESTION 16

Your network contains an Active Directory forest named contoso.com. The forest contains 10 domains. The root domain contains a global catalog server named DC1.

You remove the global catalog server role from DC1.

You need to decrease the size of the Active Directory database on DC1.

Solution: You restart DC1 in Directory Services Repair Mode. You run compact.exe, and then restart DC1. Does this meet the goal?

- A. Yes
- B. No

Answer: B

Explanation:

You need to run ntdsutil.exe with the 'compact to' option. References:

<https://theitbros.com/active-directory-database-compact-defrag/>

NEW QUESTION 21

Your company has multiple offices.

The network contains an Active Directory domain named contoso.com. An Active Directory site exists for each office. All of the sites connect to each other by using DEFAULTIPSITELINK.

The company plans to open a new office. The new office will have a domain controller and 100 client computers.

You install Windows Server 2016 on a member server in the new office. The new server will become a domain controller.

You need to deploy the domain controller to the new office. The solution must ensure that the client computers in the new office will authenticate by using the local domain controller.

Which three actions should you perform next in sequence? To answer, move the appropriate actions from the list of actions to the answer area and arrange them in the correct order.

Actions

Answer Area

Create a new site object.

Create a new connection object.

Promote the member server to a domain controller.

Create a new subnet object.

Move the server object of the domain controller.

- A. Mastered
- B. Not Mastered

Answer: A

Explanation:

Actions

Answer Area

Create a new site object.

Create a new site object.

Create a new connection object.

Create a new subnet object.

Promote the member server to a domain controller.

Promote the member server to a domain controller.

Create a new subnet object.

Move the server object of the domain controller.

NEW QUESTION 24

Your network contains an Active Directory domain named contoso.com.

You create a domain security group named Group1 and add several users to it.

You need to force all of the users in Group1 to change their password every 35 days. The solution must affect the Group1 users only.

What should you do?

- A. From Windows PowerShell, run the Set-ADDomain cmdlet, and then run the Set-ADAccountPassword cmdlet.
- B. Modify the Password Policy settings in a Group Policy object (GPO) that is linked to the domain, and then filter the GPO to Group1 only.
- C. Create a forms authentication provider, and then set the forms authentication credentials.
- D. From Active Directory Administrative Center, create a Password Setting object (PSO).

Answer: D

NEW QUESTION 28

Your network contains an Active Directory domain named contoso.com. The domain contains two servers named Server1 and Server2 that run Windows Server 2016.

Server1 has Microsoft System Center 2016 Virtual Machine Manager (VMM) installed. Server2 has IP Address Management (IPAM) installed.

You create a domain user named User1.

You need to integrate IPAM and VMM. VMM must use the account of User1 to manage IPAM. The solution must use the principle of least privilege.

What should you do on each server? To answer, select the appropriate options in the answer area.

Answer Area

On Server1:

▼

Create a Run as Account that uses User1

Add User1 to the Fabric Administrator user role

Add User1 to the Remote Management Users group

On Server2:

▼

Add User1 to IPAM Administrator Role

Add User1 to IPAM ASM Administrator Role

Add User1 to IPAM MSM Administrator Role

- A. Mastered
- B. Not Mastered

Answer: A

Explanation:

References:

[https://technet.microsoft.com/en-us/library/dn783349\(v=ws.11\).aspx](https://technet.microsoft.com/en-us/library/dn783349(v=ws.11).aspx)

NEW QUESTION 29

Note: This question is part of a series of questions that use the same scenario. For you convenience, the scenario is repeated in each question. Each question presents a different goal and answer choices, but the text of the scenario is exactly the same in each question in this series.

Start of repeated scenario.

You work for a company named Contoso, Ltd.

The network contains an Active Directory forest named contoso.com. A forest trust exists between contoso.com and an Active Directory forest named adatum.com.

The contoso.com forest contains the objects configured as shown in the following table.

Object name	Object type	Group scope	Group type
User1	User	<i>Not applicable</i>	<i>Not applicable</i>
User2	User	<i>Not applicable</i>	<i>Not applicable</i>
Computer1	Computer	<i>Not applicable</i>	<i>Not applicable</i>
Group1	Group	Domain local	Security
Group2	Group	Domain local	Security
Group3	Group	Universal	Security
Group4	Group	Global	Security
Group5	Group	Universal	Security

Group1 and Group2 contain only user accounts.

Contoso hires a new remote user named User3. User3 will work from home and will use a computer named Computer3 that runs Windows 10. Computer3 is currently in a workgroup.

An administrator named Admin1 is a member of the Domain Admins group in the contoso.com domain. From Active Directory Users and Computers, you create an organizational unit (OU) named OU1 in the contoso.com domain, and then you create a contact named Contact1 in OU1.

An administrator of the adatum.com domain runs the Set-ADUser cmdlet to configure a user named User1 to have a user logon name of User1@litwareinc.com.

End of repeated scenario.

You need to join Computer3 to the contoso.com domain by using offline domain join.

Which command should you use in the contoso.com domain and on Computer3? To answer, select the appropriate options in the answer area.

Answer Area

The contoso.com domain:

▼
Add-Computer with the-DomainName parameter
Djoin.exe with the /provision parameter
Djoin.exe with the /requestodj parameter
Net computer with the /add parameter
Netdom.exe with the join parameter

Computer3:

▼
Add-Computer with the-DomainName parameter
Djoin.exe with the /provision parameter
Djoin.exe with the /requestodj parameter
Net computer with the /add parameter
Netdom.exe with the join parameter

- A. Mastered
- B. Not Mastered

Answer: A

Explanation:

Answer Area

The contoso.com domain:

▼
Add-Computer with the-DomainName parameter
Djoin.exe with the /provision parameter
Djoin.exe with the /requestodj parameter
Net computer with the /add parameter
Netdom.exe with the join parameter

Computer3:

▼
Add-Computer with the-DomainName parameter
Djoin.exe with the /provision parameter
Djoin.exe with the /requestodj parameter
Net computer with the /add parameter
Netdom.exe with the join parameter

NEW QUESTION 30

Your network contains an Active Directory domain named contoso.com.
 You need to create a central store for Group Policy administrative templates. What should you use?

- A. Server Manager
- B. File Explorer

- C. Dcgpofix.exe
- D. Group Policy Management Console (GPMC)

Answer: B

NEW QUESTION 31

Your network contains an Active Directory domain named contoso.com. The domain contains three servers named Server1, Server2, and Server3 that run Windows Server 2016. Server1 has IP Address Management (IPAM) installed. Server2 and Server3 have the DHCP Server role installed and have several DHCP scopes configured. The IPAM server retrieves data from Server2 and Server3. A domain user named User1 is a member of the groups shown in the following table.

Server name	Group
Server2	DHCP Administrators
Server3	DHCP Users

On Server1, you create a security policy for User1. The policy grants the IPAM DHCP Scope Administrator Role with the \Global access scope to the user. Which actions can User1 perform? To answer, select the appropriate options in the answer area.

Answer Area

From Server Manager on Server1, User1 can modify the description of the DHCP scopes:

▼

On Server2 only

On Server3 only

On both Server2 and Server3

From Server Manager on Server1, User1 can create a new DHCP scope:

▼

On Server2 only

On Server3 only

On both Server2 and Server3

- A. Mastered
- B. Not Mastered

Answer: A

Explanation:

User1 is using Server Manager, not IPAM to perform the administration. Therefore, only the “DHCP Administrators” permission on Server2 and the “DHCP Users” permissions on Server3 are applied. The permissions granted through membership of the “IPAM DHCP Scope Administrator Role” are not applied when the user is not using the IPAM console.

NEW QUESTION 33

Your network contains an Active Directory domain named contoso.com. The domain contains a server named Server1 that runs Windows Server 2016. On Server1, you create a local user named User1. User1 is a member of the local Administrators group. Server1 has the following local Group Policies: K

- Local Computer Policy
- Local Computer\User1Policy
- Local Computer\Administrators Policy

You need to force User1 to change his password every 14 days.

Solution: You configure the Password Policy settings in a Group Policy object (GPO) that is linked to the Domain Controllers organizational unit (OU).

- A. Yes
- B. No

Answer: B

NEW QUESTION 38

Your network contains an Active Directory domain. The domain contains a domain controller named DC1 that runs Windows Server 2016. You start DC1 in Directory Services Restore Mode (DSRM). You need to compact the Active Directory database on DC1. Which three action should you perform in sequence?

Actions	Answer Area
Run ntdsutil.exe.	1. <input type="text"/>
From the Metadata Cleanup context, select an operation target.	2. <input type="text"/>
Run dsamain.exe.	3. <input type="text"/>
From the Semantic Database Analysis context, run go fixup.	
Run activate instance ntds.	
From the Files context, run compact.	

- A. Mastered
B. Not Mastered

Answer: A

Explanation:

[https://technet.microsoft.com/en-us/library/cc794920\(v=ws.10\).aspx](https://technet.microsoft.com/en-us/library/cc794920(v=ws.10).aspx)

NEW QUESTION 41

You have a server named Server1 that runs Windows Server 2016. Server1 has the Web Application Proxy role service installed.

You publish an application named App1 by using the Web Application Proxy.

You need to change the URL that users use to connect to App1 when they work remotely. Which command should you run? To answer, select the appropriate options in the answer area.

Answer Area

<div><div>▼</div><div>Set-WebApplicationProxyApplication</div><div>Set-WebApplicationProxyConfiguration</div><div>Set-WebApplicationProxySslCertificate</div></div>	-ID 874A4543-7983-77A3-1E6D-1163E7419AC1
<div><div>▼</div><div>-ADFSUrl</div><div>-BackendServerUrl</div><div>-ExternalURL</div></div>	https://SP.Contoso.com/

- A. Mastered
B. Not Mastered

Answer: A

Explanation:

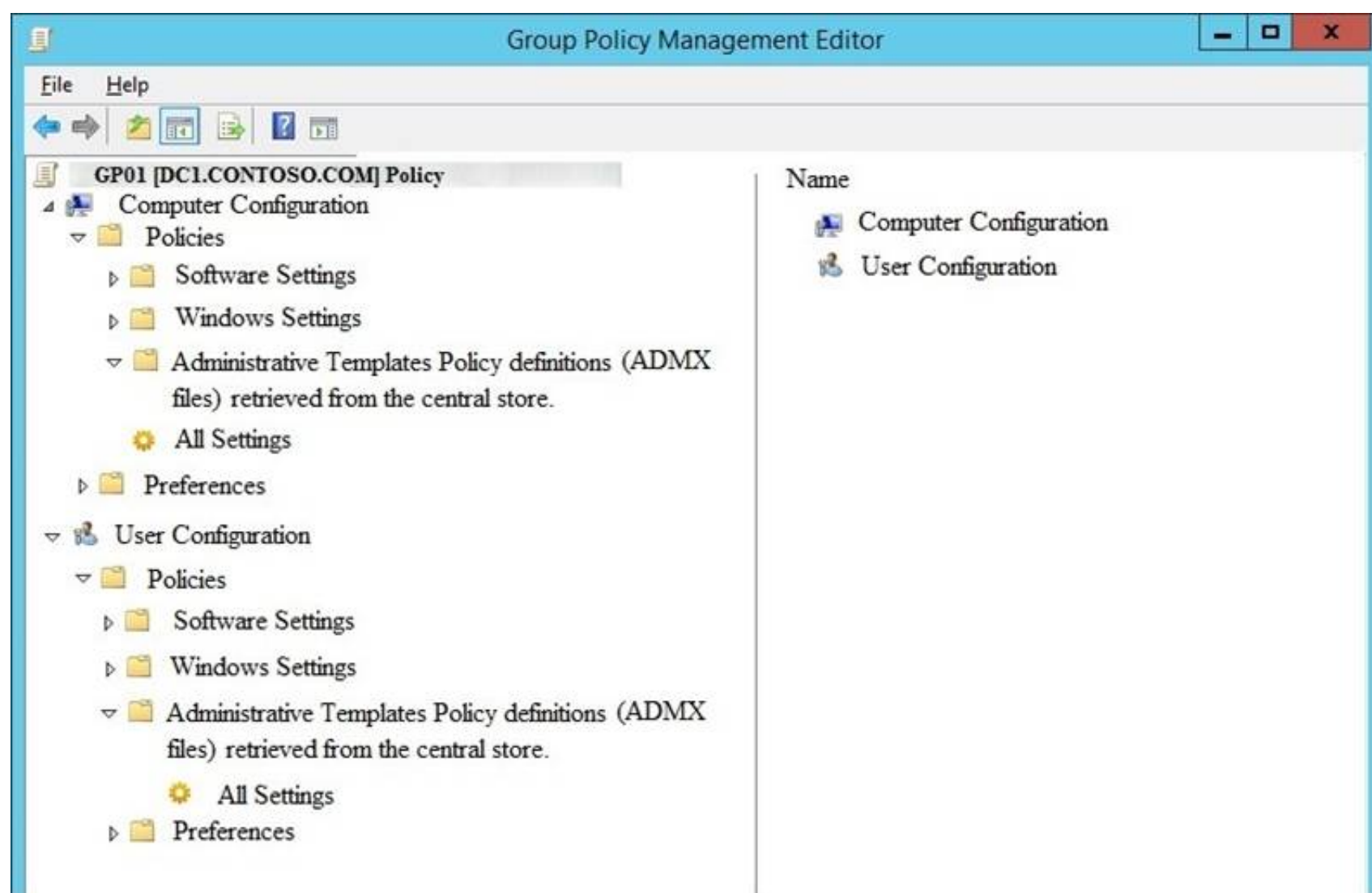
The Set-WebApplicationProxyApplication cmdlet modifies settings of a web application published through Web Application Proxy. Specify the web application to modify by using its ID. Note that the method of preauthentication cannot be changed. The cmdlet ensures that no other applications are already configured to use any specified ExternalURL or BackendServerURL.

References: <https://technet.microsoft.com/itpro/powershell/windows/wap/set-webapplicationproxyapplication>

NEW QUESTION 43

Your network contains an Active Directory domain named contoso.com. The domain contains a member server named Server1 and a domain controller named DC1. Both servers run Windows Server 2016. Server1 is used to perform administrative tasks, including managing Group Policies.

After maintenance is performed on DC1, you open a Group Policy object (GPO) from Server1 as shown in the exhibit.



You need to be able to view all of the Administrative Templates settings in GPO1. What should you do?

- A. From File Explorer, copy the administrative templates from \\contoso.com\SYSVOL\contoso.com\Policies to the PolicyDefinitions folder on Server1.
- B. From File Explorer, delete \\contoso.com\SYSVOL\contoso.com\Policies\PolicyDefinitions.
- C. From File Explorer, delete the PolicyDefinitions folder from Server1.
- D. From Group Policy Management, configure WMI Filtering for GPO1.

Answer: B

NEW QUESTION 44

Your network contains an Active Directory forest. The forest functional level is Windows Server 2016. You have a failover cluster named Cluster1. Cluster1 has two nodes named Server1 and Server2. All the optional features in Active Directory are enabled.

A junior administrator accidentally deletes the computer object named Cluster1. You discover that Cluster1 is offline.

You need to restore the operation of Cluster1 in the least amount of time possible. What should you do?

- A. Run the Enable-ADAccount cmdlet from Windows PowerShell.
- B. Perform an authoritative restore by running ntdutil.exe.
- C. Perform a tombstone reanimation by running ldp.exe.
- D. Recover a deleted object from the Active Directory Recycle Bin.

Answer: D

NEW QUESTION 48

Your network contains an Active Directory domain named adatum.com. The domain contains a security group named G_Research and an organizational unit (OU) named OU_Research.

All the users in the research department are members of G_Research and their user accounts are in OU_Research.

You need to ensure that all the research department users change their password every 28 days and enforce a complex password that is characters long. What should you do?

- A. From Group Policy Management, create and link a Group Policy object (GPO) to the domain.
- B. Modify the password policy in the GPO. Filter the GPO to apply to G_Research only.
- C. From Active Directory Administrative Center, create a new Password Settings object (PSO).
- D. From Active Directory Users and Computers, modify the properties of the Password Settings Container.
- E. From Group Policy Management, create and link a Group Policy object (GPO) to OU_Research.
- F. Modify the password policy in the GPO.

Answer: C

NEW QUESTION 51

Note: This question is part of a series of questions that present the same scenario. Each question in the series contains a unique solution that might meet the stated goals. Some question sets might have more than one correct solution, while others might not have a correct solution.

After you answer a question in this section, you will NOT be able to return to it. As a result, these questions will not appear in the review screen.

You deploy a new Active Directory forest.

You need to ensure that you can create a group Managed Service Account (gMSA) for multiple member servers.

Solution: You configure Kerberos constrained delegation on the computer account of each domain controller. Does this meet the goal?

- A. Yes

B. No

Answer: B

NEW QUESTION 55

Your network contains an Active Directory domain named contoso.com. The domain contains five domain controllers. You have a branch office that has a local support technician named Tech1. Tech1 installs Windows Server 2016 on a server named RODC1 in a workgroup. You need Tech1 to deploy RODC1 as a read-only domain controller (RODC) in the contoso.com domain. Which three actions should you perform? Each correct answer presents part of the solution.

- A. Instruct Tech1 to run the Active Directory Domain Services Configuration Wizard.
- B. Create an RODC computer account by using Active Administrative Center.
- C. Instruct Tech1 to run dcpromo.exe on RODC1.
- D. Instruct Tech1 to install the Active Directory Domain Services server role on RODC1.
- E. Modify the permissions of the Domain Controllers organizational unit (OU).

Answer: ACD

NEW QUESTION 59

You are deploying a web application named WebApp1 to your internal network. WebApp1 is hosted on a server named Web1 that runs Windows Server 2016. You deploy an Active Directory Federation Services (AD FS) infrastructure and a Web Application Proxy to provide access to WebApp1 for remote users. You need to ensure that Web1 can authenticate the remote users. What should you do?

- A. Publish WebApp1 by using pass-through preauthentication.
- B. Publish WebApp 1 as a Remote Desktop Gateway (RD Gateway) application in the Web Application Proxy.
- C. Publish WebApp1 by using AD FS preauthentication.
- D. Publish WebApp1 by using client certificate preauthentication.

Answer: A

NEW QUESTION 60

Note: This question is part of a series of questions that use the same or similar answer choices. An answer choice may be correct for more than one question in the series. Each question is independent of the other questions in this series. Information and details provided in a question apply only to that question.

Your network contains an Active Directory domain named contoso.com. The domain contains a domain controller named Server1.

You recently restored a backup of the Active Directory database from Server1 to an alternate Location. The restore operation does not interrupt the Active Directory services on Server1.

You need to make the Active Directory data in the backup accessible by using Lightweight Directory Access Protocol (LDAP).

Which tool should you use?

- A. Dsadd quota
- B. Dsmod
- C. Active Directory Administrative Center
- D. DsacIs
- E. Dsamain
- F. Active Directory Users and Computers
- G. Ntdsutil
- H. Group Policy Management Console

Answer: E

NEW QUESTION 62

Your network contains an Active Directory forest. The forest contains a domain named contoso.com. The domain contains three domain controllers.

A domain controller named lon-dc1 fails. You are unable to repair lon-dc1.

You need to prevent the other domain controllers from attempting to replicate to lon-dc1.

Solution: From Active Directory Sites and Trusts, you transfer the operations master roles from lon-dc1. Does this meet the goal?

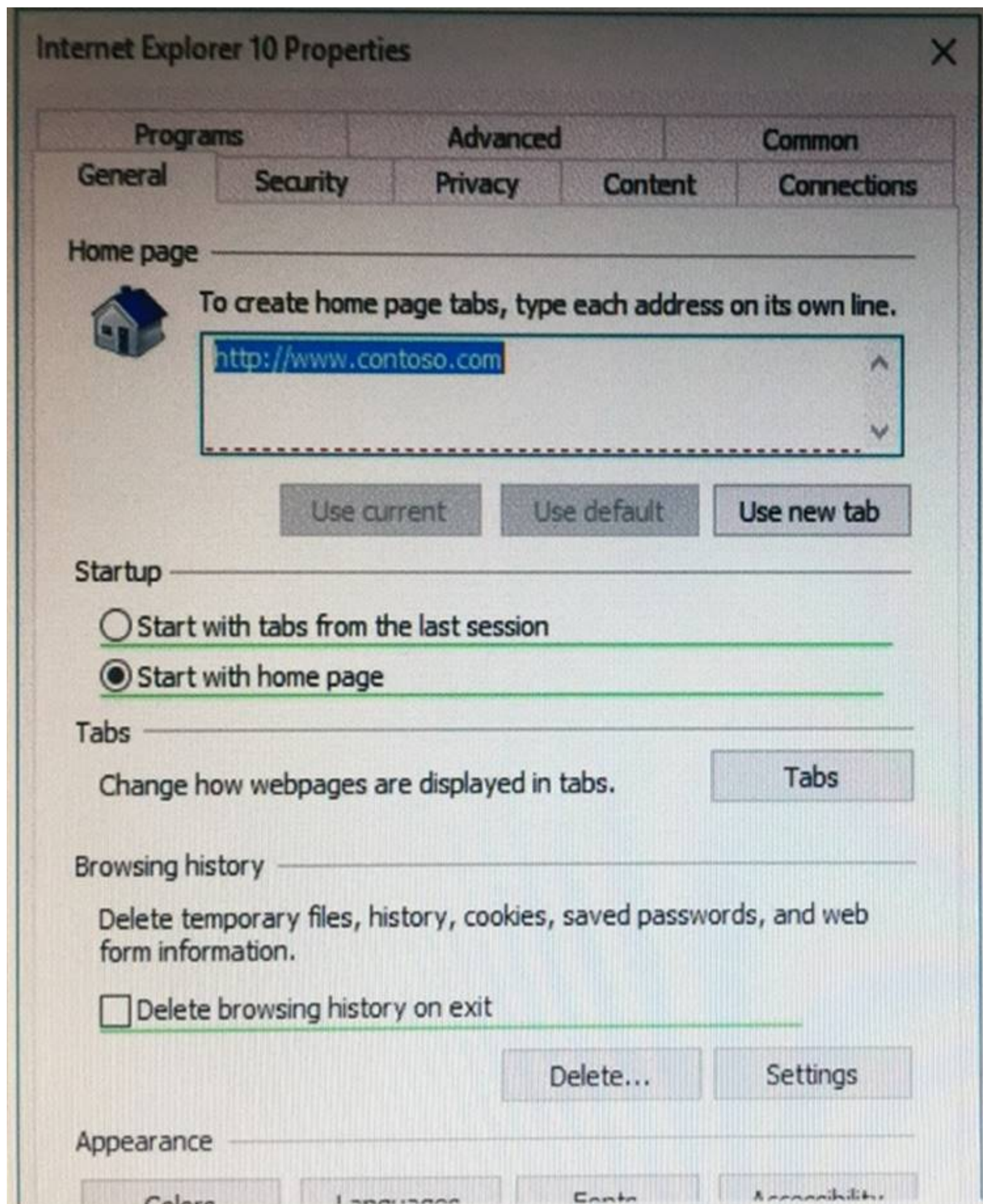
- A. Yes
- B. NO

Answer: B

NEW QUESTION 66

Your network contains an Active Directory domain named contoso.com. The domain contains a Group Policy object (GPO) named GPO1.

You configure the Internet Settings preference in GPO1 as shown in the exhibit. (Click the Exhibit button.)



A user reports that the homepage of Internet Explorer is not set to <http://www.contoso.com>. You confirm that the other settings in GPO1 are applied. You need to configure GPO1 to set the Internet Explorer homepage. What should you do?

- A. Edit the GPO1 preference and press F5.
- B. Modify Security Settings for GPO1.
- C. Modify WMI Filtering for GPO1.
- D. Modify the GPO1 preference to use item-level targeting.

Answer: A

Explanation:

The red dotted line under the homepage URL means that setting is disabled. Pressing F5 enables all settings.

NEW QUESTION 70

Your network contains an Active Directory domain named [contoso.com](http://www.contoso.com). The domain contains a user named User1, a group named Group1, and an Organizational unit (OU) named OU1.

You need to enable User1 to link Group Policies to OU1.

Solution: From Active Directory Users and Computers, you add User1 to the Group Policy Creator Owner group.

Does this meet the goal?

- A. Yes
- B. No

Answer: B

NEW QUESTION 71

Note: This question is part of a series of questions that use the same scenario. For your convenience, the scenario is repeated in each question. Each question presents a different goal and answer choices, but the text of the scenario is exactly the same in each question in this series.

Start of repeated scenario.

You work for a company named Contoso, Ltd.

The network contains an Active Directory forest named contoso.com. A forest trust exists between contoso.com and an Active Directory forest named adatum.com.

The contoso.com forest contains the objects configured as shown in the following table.

Object name	Object type	Group scope	Group type
User1	User	<i>Not applicable</i>	<i>Not applicable</i>
User2	User	<i>Not applicable</i>	<i>Not applicable</i>
Computer1	Computer	<i>Not applicable</i>	<i>Not applicable</i>
Group1	Group	Domain local	Security
Group2	Group	Domain local	Security
Group3	Group	Universal	Security
Group4	Group	Global	Security
Group5	Group	Universal	Security

Group1 and Group2 contain only user accounts.

Contoso hires a new remote user named User3. User3 will work from home and will use a computer named Computer3 that runs Windows 10. Computer3 is currently in a workgroup.

An administrator named Admin1 is a member of the Domain Admins group in the contoso.com domain. From Active Directory Users and Computers, you create an organizational unit (OU) named OU1 in the contoso.com domain, and then you create a contact named Contact1 in OU1.

An administrator of the adatum.com domain runs the Set-ADUser cmdlet to configure a user named User1 to have a user logon name of User1@litwareinc.com.

End of repeated scenario.

You need to ensure that Admin1 can add Group2 as a member of Group3. What should you modify?

- A. Modify the Security settings of Group3.
- B. Modify the group scope of Group3.
- C. Modify the group type of Group3.
- D. Set Admin1 as the manager of Group3.

Answer: B

NEW QUESTION 75

You have a server named Server1 that runs Windows Server 2016. Server1 has the Web Application Proxy role service installed.

You need to publish Microsoft Exchange Server 2013 services through the Web Application Proxy. The solution must use preauthentication whenever possible.

How should you configure the preauthentication method for each service? To answer, select the appropriate options in the answer area.

Answer Area

Exchange ActiveSync:	<div>▼</div> <div>Active Directory Federation Services (AD FS)</div> <div>Pass-through</div>
Outlook Web App:	<div>▼</div> <div>Active Directory Federation Services (AD FS)</div> <div>Pass-through</div>
Outlook Anywhere:	<div>▼</div> <div>Active Directory Federation Services (AD FS)</div> <div>Pass-through</div>

- A. Mastered
- B. Not Mastered

Answer: A

Explanation:

Box 1: Pass-through

Box 2: Active Directory Federation Services (ADFS) Box 3: Pass-through

The following table describes the Exchange services that you can publish through Web Application Proxy and the supported preauthentication for these services:

Exchange service	Preauthentication
Outlook Web App	<ul style="list-style-type: none"> AD FS using non-claims-based authentication Pass-through AD FS using claims-based authentication for on-premises Exchange 2013 Service Pak 1 (SP1)
Exchange Control Panel	Pass-through
Outlook Anywhere	Pass-through
Exchange ActiveSync	Pass-through

References: [https://technet.microsoft.com/en-us/library/dn528827\(v=ws.11\).aspx](https://technet.microsoft.com/en-us/library/dn528827(v=ws.11).aspx)

NEW QUESTION 79

You have a server named Server1 that runs Windows Server 2016. You need to configure Server1 as a Web Application Proxy. Which server role or role service should you install on Server1?

- A. Remote Access
- B. Active Directory Federation Services
- C. Web Server (IIS)
- D. DirectAccess and VPN (RAS)
- E. Network Policy and Access Services

Answer: A

NEW QUESTION 82

Note: This question is part of a series of questions that present the same scenario. Each question in the series contains a unique solution that might meet the stated goals. Some question sets might have more than one correct solution, while others might not have a correct solution.

After you answer a question in this section, you will NOT be able to return to it. As a result, these questions will not appear in the review screen.

Your network contains an Active Directory domain named contoso.com. A user named User1 is in an organizational unit (OU) named OU1.

You need to enable User1 to sign in as user1@adatum.com.

You need a list of groups to which User1 is either a direct member or an indirect member.

Solution: From Windows PowerShell, you run Set -Aduser User1 -UserPrincipalName User1@Adatum.com. Does this meet the goal?

- A. Yes
- B. No

Answer: B

NEW QUESTION 87

Note: This question is part of a series of questions that present the same scenario. Each question in the series contains a unique solution. Determine whether the solution meets the stated goals.

Your network contains an Active Directory domain named contoso.com. The domain contains a DNS server named Server1. All client computers run Windows 10. On Server1, you have the following zone configuration.

ZoneName	ZoneType	IsAutoCreated	IsDsIntegrated	IsReverseLookupZone	IsSigned
_msdcs.contoso.com	Primary	False	True	False	False
0.in-addr.arpa	Primary	True	False	True	False
127.in-addr.arpa	Primary	True	False	True	False
255.in-addr.arpa	Primary	True	False	True	False
adatum.com	Forwarder	False	False	False	
contoso.com	Primary	False	True	False	False
fabrikam.com	Primary	False	True	False	True
TrustAnchors	Primary	False	True	False	False

You need to ensure that all of the client computers in the domain perform DNSSEC validation for the fabrikam.com namespace.

Solution: From a Group Policy object (GPO) in the domain, you add a rule to the Name Resolution Policy Table (NRPT).

Does this meet the goal?

- A. Yes
- B. No

Answer: A

Explanation:

The NRPT stores configurations and settings that are used to deploy DNS Security Extensions (DNSSEC), and also stores information related to DirectAccess, a remote access technology.

Note: The Name Resolution Policy Table (NRPT) is a new feature available in Windows Server 2008 R2. The NRPT is a table that contains rules you can configure to specify DNS settings or special behavior for names or namespaces. When performing DNS name resolution, the DNS Client service checks the NRPT before sending a DNS query. If a DNS query or response matches an entry in the NRPT, it is handled according to settings in the policy. Queries and responses that do not match an NRPT entry are processed normally.

References: [https://technet.microsoft.com/en-us/library/ee649207\(v=ws.10\).aspx](https://technet.microsoft.com/en-us/library/ee649207(v=ws.10).aspx)

NEW QUESTION 92

You create a user account that will be used as a template for new user accounts.

Which setting will be copied when you copy the user account from Active Directory Users and Computers?

- A. the Department attribute
- B. the Description attribute
- C. Permission
- D. Remote Desktop Services Profile

Answer: A

Explanation:

A user template in Active Directory can be used if you are creating users for a specific department, with exactly the same properties, and membership to the same user groups. A user template is nothing more than a disabled user account that has all these settings already in place.

References:

<http://www.rebeladmin.com/2014/07/create-users-with-user-templates-in-ad/>

NEW QUESTION 93

You deploy a new certification authority (CA) to a server that runs Windows Server 2016. You need to configure the CA to support recovery of certificates.

What should you do first?

- A. Modify the Recovery Agents settings from the properties of the CA.
- B. Assign the Request Certificates permission to the user account that will be responsible for recovering certificates.
- C. Configure the Key Recovery Agent template as a certificate template to issue.
- D. Modify the extensions of the OCSP Response Signing template.

Answer: C

Explanation:

References:

<http://markgossa.blogspot.co.uk/2017/03/enable-key-archival-in-server-2012-r2.html>

NEW QUESTION 94

Your network contains an Active Directory domain.

You have a user account that is a member of the Domain Admins group.

You have 100 laptops that have a standard corporate image installed. The laptops are in workgroups and have random names.

A technician named Tech1 is assigned the task of joining the laptops to the domain. The computer accounts of each laptop must be in an organizational unit (OU) that is associated to the department of the user who will use the laptop. The laptop names must start with four characters indicating the department, followed by a fourdigit number.

Tech1 is a member of the Domain Users group only. Tech1 has the administrator logon credentials for all the laptops.

You need Tech1 to join the laptops to the domain. The solution must ensure that the laptops are named correctly, and the computer accounts of the laptops are in the correct OUs.

Solution: You pre-create the computer account of each laptop in Active Directory Users and Computers.

You instruct Tech1 to sign in to each laptop, to rename each laptop, and then to join each laptop to the domain by using System in Control Panel.

Does this meet the goal?

- A. Yes
- B. No

Answer: B

NEW QUESTION 99

Your network contains an Active Directory forest named contoso.com. The forest contains several domains. An administrator named Admin01 installs Windows Server 2016 on a server named Server1 and then joins

Server1 to the contoso.com domain.

Admin01 plans to configure Server1 as an enterprise root certification authority (CA).

You need to ensure that Admin01 can configure Server1 as an enterprise CA. The solution must use the principle of least privilege.

To which group should you add Admin01?

- A. Server Operators in the contoso.com domain
- B. Cert Publishers on Server1
- C. Enterprise Key Admins in the contoso.com domain
- D. Enterprise Admins in the contoso.com domain.

Answer: D

NEW QUESTION 101

Your network contains an Active Directory forest named contoso.com. The forest contains 10 domains. The root domain contains a global catalog server named DC1.

You remove the global catalog server role from DC1.

You need to decrease the size of the Active Directory database on DC1.

Solution: You stop the NTDS service on DC1. You run ntdsutil.exe, use the metadata cleanup option, and then start the NTDS

Does this meet the goal?

- A. Yes
- B. No

Answer: B

Explanation:

You need to run ntdsutil.exe with the 'compact to' option. References:

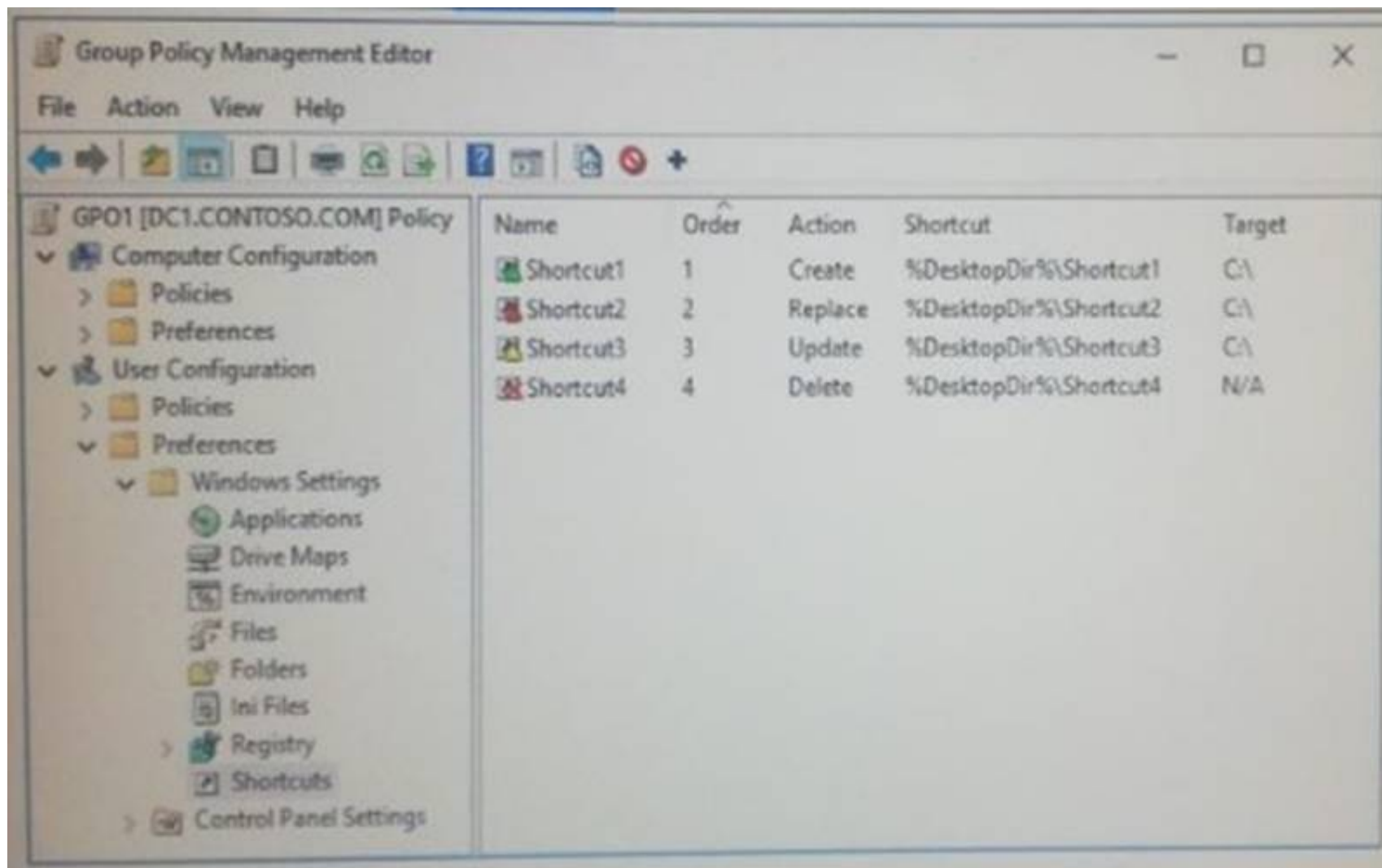
<https://theitbros.com/active-directory-database-compact-defrag/>

NEW QUESTION 104

User1 is in OU1. GPO1 is linked to OU1.

Object name	Type
Computer1	Domain computer
OU1	Organizational unit (OU)
GPO1	Group Policy object (GPO)
User1	User account

The settings in GPO1 are configured as shown in the exhibit. (Click the Exhibit button)



Computer1 does not have any shortcuts on the desktop.

- A. 1
- B. 2
- C. 3
- D. 4

Answer: D

NEW QUESTION 108

Your network contains an Active Directory domain named contoso.com.

You have an organizational unit (OU) named TestOU that contains test computers.

You need to enable a technician named Tech1 to create Group Policy objects (GPOs) and to link the GPOs to TestOU. The solution must use the principle of least privilege.

Which two actions should you perform? Each correct answer presents part of the solution.

- A. Add Tech1 to the Group Policy Creator Owners group.
- B. From Group Policy Management, modify the Delegation settings of the TestOU OU.
- C. Add Tech1 to the Protected Users group.
- D. From Group Policy Management, modify the Delegation settings of the contoso.com container.
- E. Create a new universal security group and add Tech1 to the group.

Answer: AB

NEW QUESTION 109

Your network contains an active Directory domain. The domain contains 20 domain controllers.

You discover that some Group Policy objects (GPOs) are not being applied by all the domain controllers. You need to verify whether GPOs replicate successfully to all the domain controllers.

What should you do?

- A. Set BurFlags in the registry, and then restart the File Replication Service (FRS). Run dcdiag.exe for each domain controller.
- B. Set BurFlags in the registry, and then restart the File Replication Service (FRS). View the Directory Service event log.
- C. From Group Policy Management, view the Status tab for the domain.
- D. Run repadmin.exe for each GPO.

Answer: D

NEW QUESTION 114

Your company has a main office and three branch offices. The network contains an Active Directory domain named contoso.com.

The main office contains three domain controllers. Each branch office contains one domain controller.

You discover the new settings in the Default Domain Policy are not applied in one of the branch offices, but all other Group Policy objects (GPOs) are applied.

You need to check the replication of the Default Domain Policy for the branch office. What should you do from a domain controller in the main office?

- A. From Group Policy Management, click Default Domain Policy under Contoso.com, and then open the Scope tab.
- B. From a command prompt, run dcdiag.exe.
- C. From Group Policy Management, click Default Domain Policy under the Group Policy Objects container, and then open the Status tab.
- D. From Windows PowerShell, run the Get-ADReplicationConnection cmdlet.

Answer: C

NEW QUESTION 119

Your network contains an enterprise root certification authority (CA) named CA1.

Multiple computers on the network successfully enroll for certificates that will expire in one year. The certificates are based on a template named Secure_Computer. The template uses schema version 2.

You need to ensure that new certificates based on Secure_Computer are valid for three years. What should you do?

- A. Modify the Validity period for the certificate template.
- B. Instruct users to request certificates by running the certreq.exe command.
- C. Instruct users to request certificates by using the Certificates console.
- D. Modify the Validity period for the root CA certificate.

Answer: A

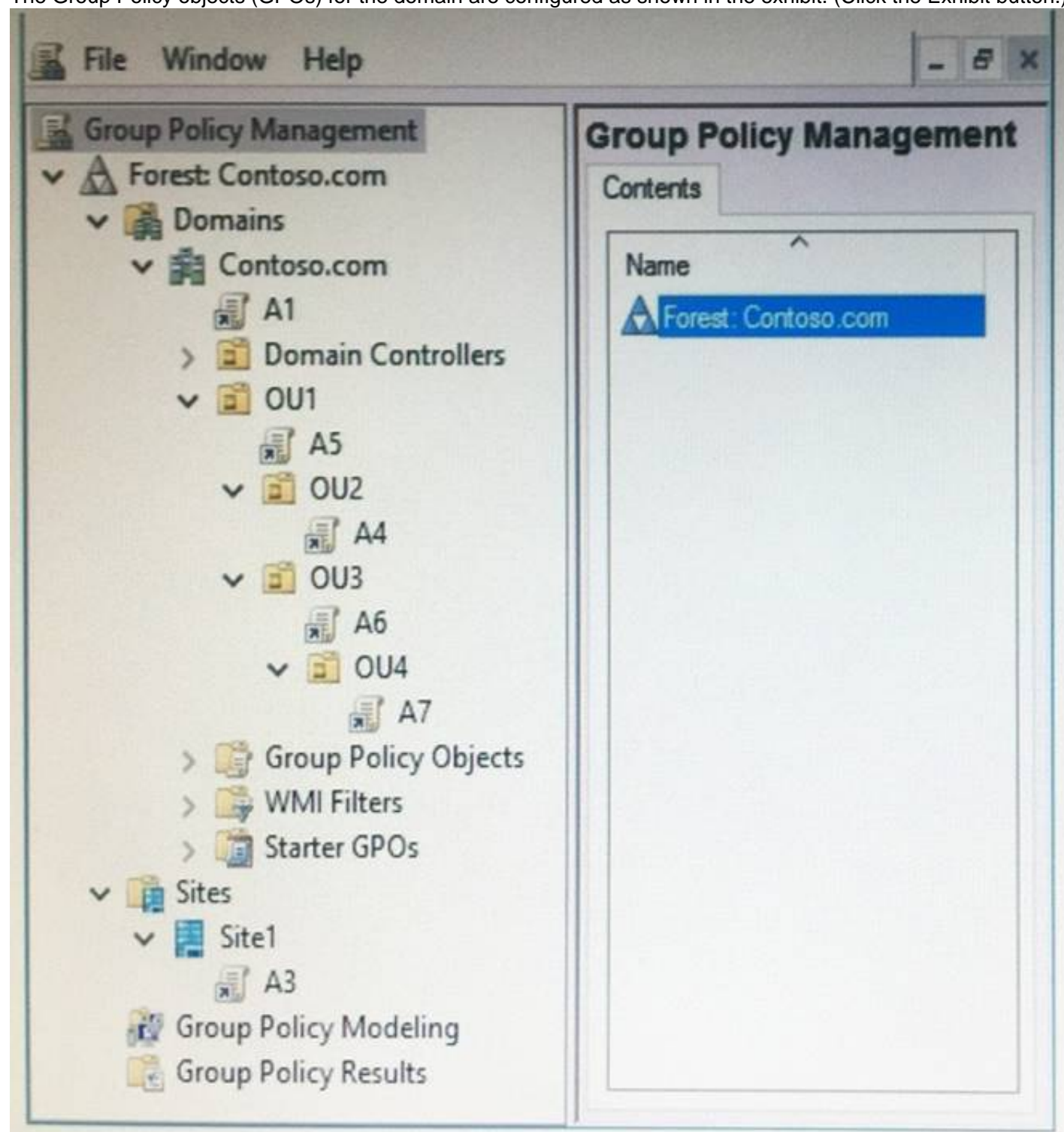
NEW QUESTION 121

Note: This question is part of a series of questions that use the same scenario. For your convenience, the scenario is repeated in each question. Each question presents a different goal and answer choices, but the text of the scenario is exactly the same in each question in this series.

Start of repeated scenario.

Your network contains an Active Directory domain named contoso.com. The domain contains a single site named Site1. All computers are in Site1.

The Group Policy objects (GPOs) for the domain are configured as shown in the exhibit. (Click the Exhibit button.)



The relevant users and client computer in the domain are configured as shown in the following table.

Object name	Object type	Object location
Computer	Computer	OU4
User1	User	OU4
User2	User	OU2

End of repeated scenario.

You are evaluating what will occur when you disable the Group Policy link for A6.

Which GPOs will apply to User2 when the user signs in to Computer1 after the link for A6 is disabled?

- A. A1 and A5 only
- B. A3, A1, and A5 only
- C. A3, A1, A5, and A4 only

D. A3, A1, A5, and A7

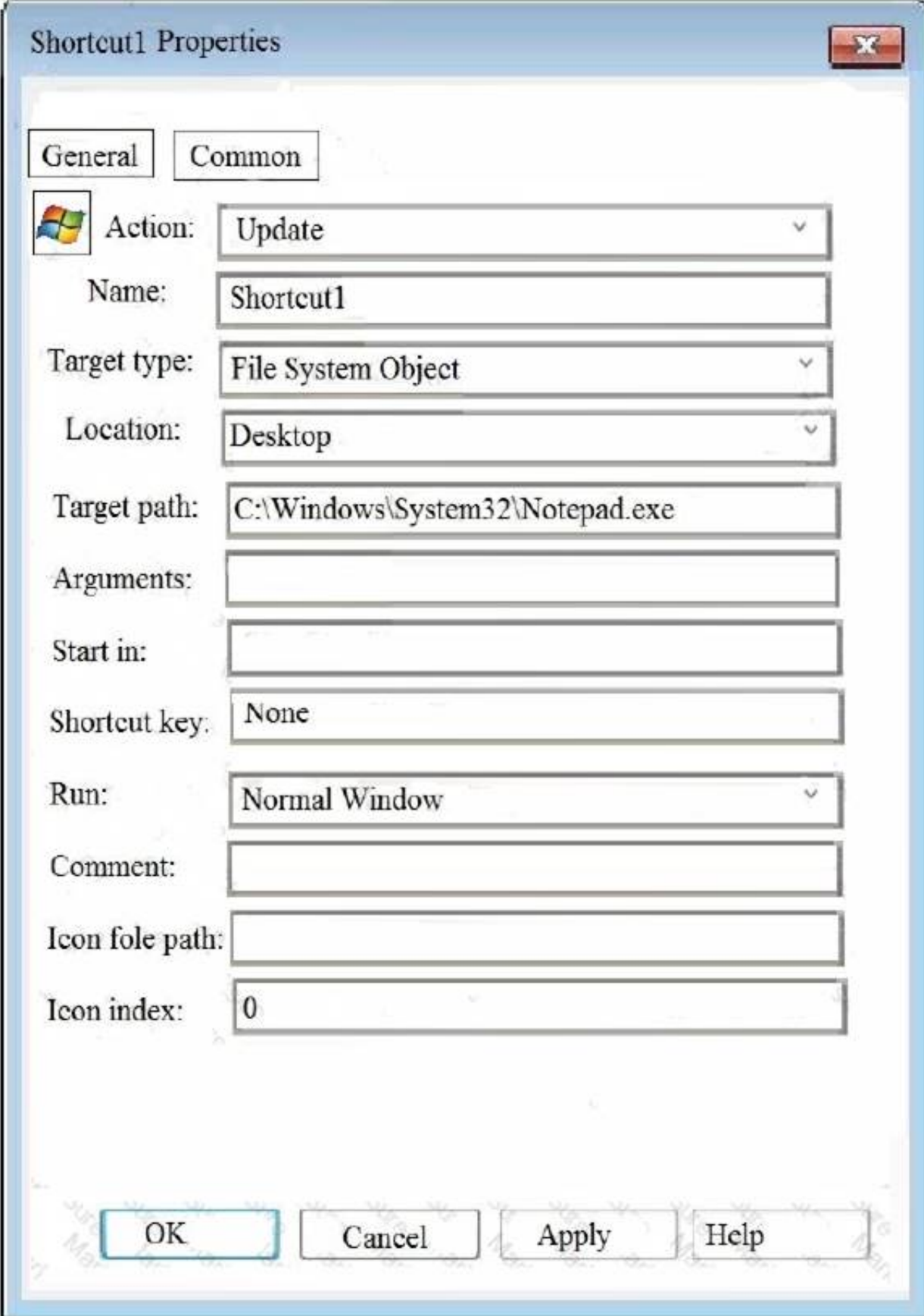
Answer: D

NEW QUESTION 126

Your network contains an Active Directory domain named contoso.com.

A user named User1 and a computer named Computer1 are in an organizational unit OU1. A user named User2 and a computer named Computer 2 are in an OU named OU2.

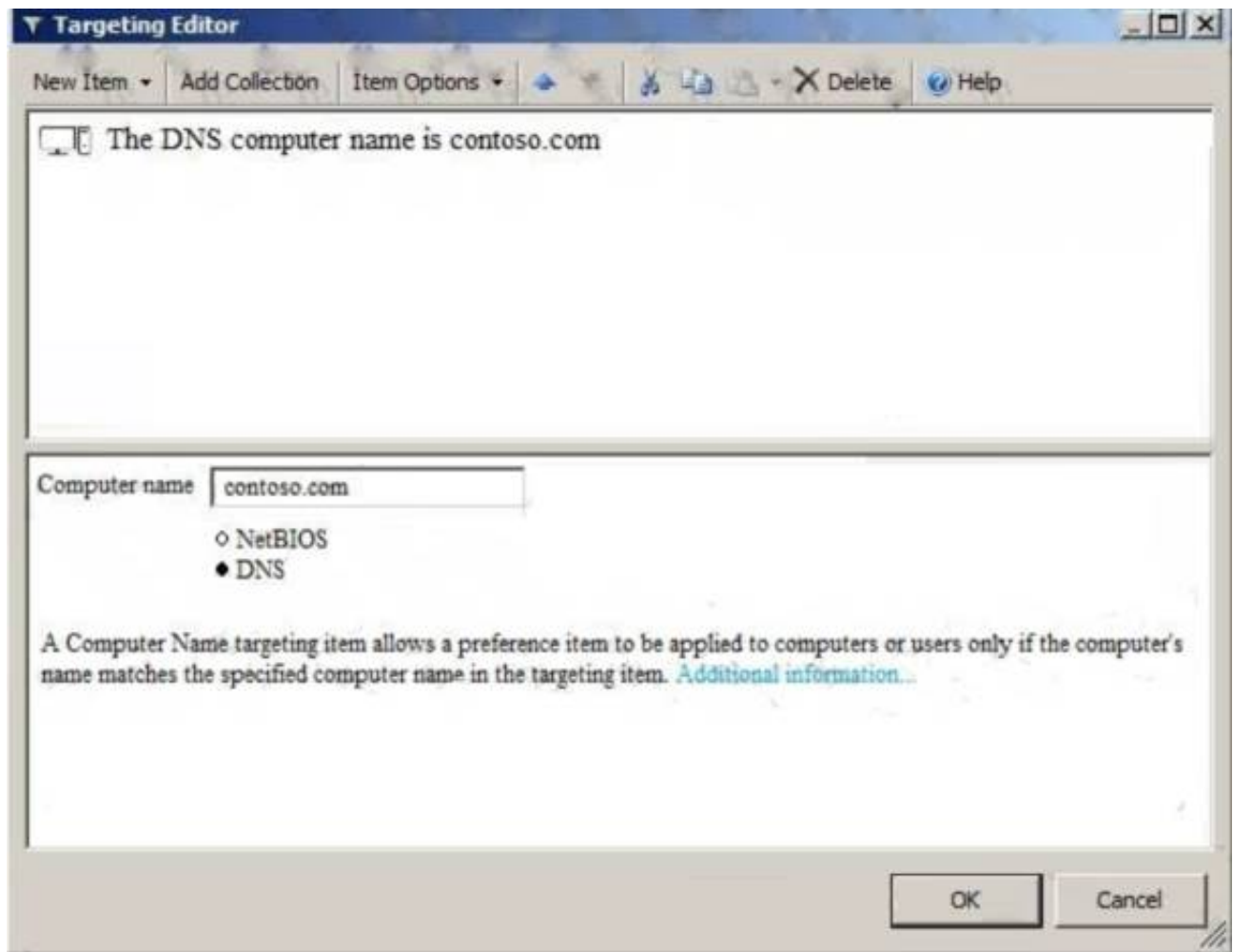
A Group Policy object (GPO) named GPO1 is linked to the domain. GPO1 contains a user preference that is configured as shown in the Shortcut1 Properties exhibit. (Click the Exhibit button.)



The screenshot shows the 'Shortcut1 Properties' dialog box with the 'General' tab selected. The 'Common' tab is also visible. The 'Action' is set to 'Update'. The 'Name' is 'Shortcut1'. The 'Target type' is 'File System Object'. The 'Location' is 'Desktop'. The 'Target path' is 'C:\Windows\System32\notepad.exe'. The 'Arguments' field is empty. The 'Start in' field is empty. The 'Shortcut key' is 'None'. The 'Run' is 'Normal Window'. The 'Comment' field is empty. The 'Icon file path' field is empty. The 'Icon index' is '0'. At the bottom, there are buttons for 'OK', 'Cancel', 'Apply', and 'Help'.

Property	Value
Action	Update
Name	Shortcut1
Target type	File System Object
Location	Desktop
Target path	C:\Windows\System32\notepad.exe
Arguments	
Start in	
Shortcut key	None
Run	Normal Window
Comment	
Icon file path	
Icon index	0

Item-level targeting for the user preference is configured as shown in the Targeting exhibit. (Click the Exhibit button.)



For each of the following statements, select Yes if the statement is true. Otherwise, select No. NOTE: Each correct selection is worth one point.

Answer Area

Statements	Yes	No
If User1 signs in to Computer1, Shortcut1 will appear on the desktop.	<input type="radio"/>	<input type="radio"/>
If User1 signs in to Computer2, Shortcut1 will appear on the desktop.	<input type="radio"/>	<input type="radio"/>
If User2 signs in to Computer1, Shortcut1 will appear on the desktop.	<input type="radio"/>	<input type="radio"/>

- A. Mastered
- B. Not Mastered

Answer: A

Explanation:

References:

<https://docs.microsoft.com/en-us/previous-versions/windows/it-pro/windows-server-2008-R2-and-2008/cc73075>

NEW QUESTION 129

Your network contains an Active Directory domain named contoso.com. You have an organizational unit (OU) named OU1 that contains the computer accounts of two servers and the user account of a user named User1. A Group Policy object (GPO) named GPO1 is linked to OU1. You have an application named App1 that installs by using an application installer named App1.exe. You need to publish App1 to OU1 by using Group Policy. What should you do?

- A. Create a Config.zap file and add a file to the File System node to the Computer Configuration node of GPO1.
- B. Create a Config.xml file and add a software installation package to the User Configuration node of GPO1.
- C. Create a Config.zap file and add a software installation package to the User Configuration node of GPO1.
- D. Create a Config.xml file and add a software installation package to the Computer Configuration node of GPO1.

Answer: C

NEW QUESTION 132

Note: This question is part of a series of questions that use the same scenario. For your convenience, the scenario is repeated in each question. Each question presents a different goal and answer choices, but the text of the scenario is exactly the same in each question in this series.

Start of repeated Scenario

You work for a company named Contoso, Ltd.

The network contains an Active Directory forest named contoso.com. A forest trust exists between contoso.com and an Active Directory forest named adatum.com.

The contoso.com forest contains the objects configured as shown in the following table.

Object name	Object type	Group scope	Group type
User1	User	<i>Not applicable</i>	<i>Not applicable</i>
User2	User	<i>Not applicable</i>	<i>Not applicable</i>
Computer1	Computer	<i>Not applicable</i>	<i>Not applicable</i>
Group1	Group	Domain local	Security
Group2	Group	Domain local	Security
Group3	Group	Universal	Security
Group4	Group	Global	Security
Group5	Group	Universal	Security

Group 1 and Group2 contain only user accounts.

Contoso hires a new remote user named User3. User3 will work from home and will use a computer named

Computer3 that runs Windows 10. Computer3 is currently in a workgroup.

An administrator named Admin1 is a member of the Domain Admins group in the contoso.com domain. From Active Directory Users and Computers, you create an organizational unit (OU) named OU1 in the

contoso.com domain, and then you create a contact named Contact1 in OU1.

An administrator of the adatum.com domain runs the Set-ADUser cmdlet to configure a user named User1 to have a user logon name of user1@litwareinc.com.

End of repeated scenario

You need to ensure that Admin1 can convert Group1 to a global group. What should you do?

- A. Add Admin1 to the Enterprise Admin group.
- B. Remove all the member from Group1.
- C. Modify the Security settings of Group1.
- D. Convert Group1 to a universal security group.

Answer: B

NEW QUESTION 135

Your network contains an Active Directory domain named contoso.com.

You have an application named App1 that is deployed to all the client computers in the domain. App1 writes a registry value named LocalStorage on all the client computers.

You need to delete the LocalStorage registry value from all the client computers in the domain that have less than 100 GB of free disk space on their system volume.

What should you do?

- A. Configure Software Settings in a Group Policy object (GPO) and enable a WMI filter.
- B. Configure a Group Policy setting to modify the security of the LocalStorage registry value.
- C. Create an administrative template file that contains the LocalStorage registry setting, and then add the administrative template to a Group Policy object (GPO).
- D. Configure a Group Policy preference that uses item-level targeting.

Answer: D

Explanation:

In Windows Server 2008 Microsoft introduced a Group Policy extension, named Group Policy Preferences (GPP). GPP that includes registry settings, allows you to add, remove or modify key values.

References: <https://theitbros.com/add-modify-and-delete-registry-keys-using-group-policy/>

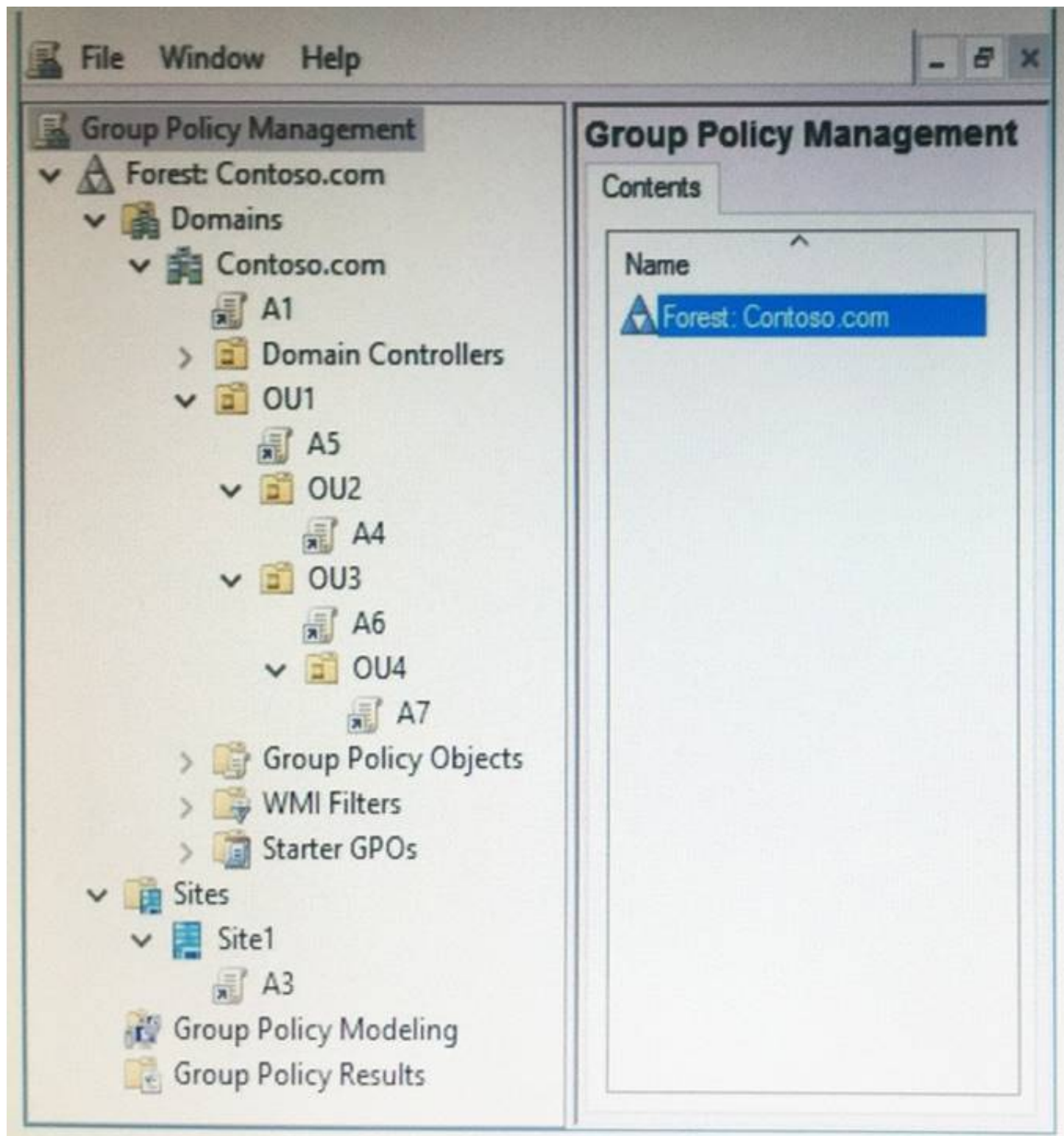
NEW QUESTION 136

Note: This question is part of a series of questions that use the same scenario. For your convenience, the scenario is repeated in each question. Each question presents a different goal and answer choices, but the text of the scenario is exactly the same in each question in this series.

Start of repeated scenario.

Your network contains an Active Directory domain named contoso.com. The domain contains a single site named Site1. All computers are in Site1.

The Group Policy objects (GPOs) for the domain are configured as shown in the exhibit. (Click the Exhibit button.)



The relevant users and client computer in the domain are configured as shown in the following table.

Object name	Object type	Object location
Computer	Computer	OU4
User1	User	OU4
User2	User	OU2

End of repeated scenario.

You are evaluating what will occur when you block inheritance on OU4.

Which GPO or GPOs will apply to User1 when the user signs in to Computer1 after block inheritance is configured?

- A. A1, A5, and A6
- B. A3, A1, A5, and A7
- C. A3 and A7 only
- D. A7 only

Answer: D

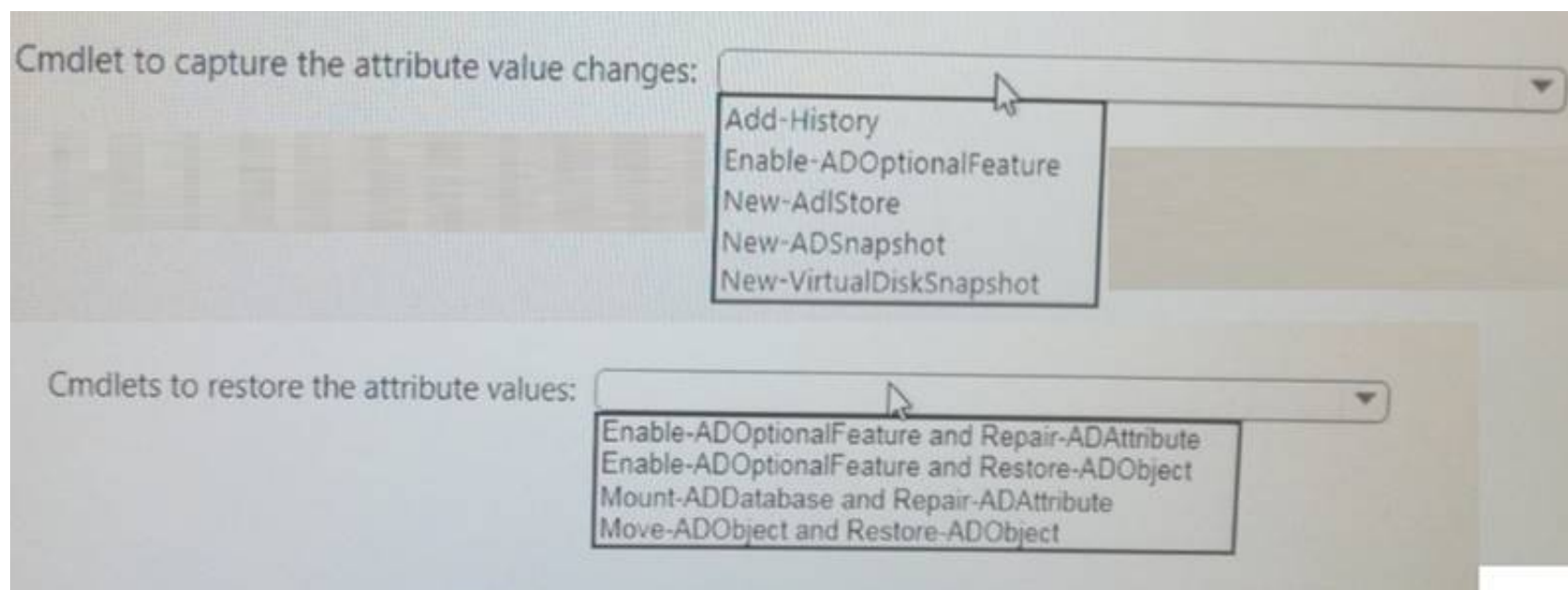
NEW QUESTION 140

Your network contains a single-domain Active Directory forest named contoso.com. The forest functional level is Windows Server 2016. The Active Directory Recycle Bin feature is enabled.

You need to design a procedure to restore the values of user object attributes if the values are changed accidentally.

Which cmdlets should you include in the procedure? To answer, select the appropriate options in the answer area.

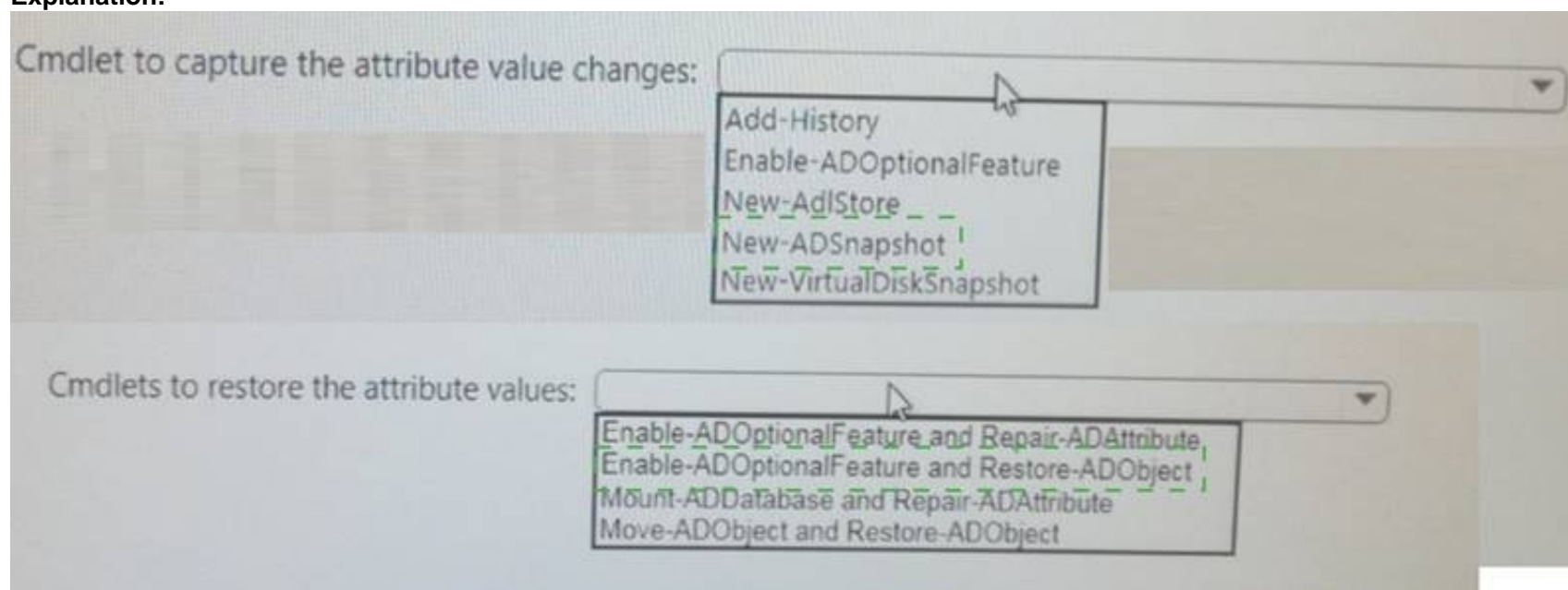
NOTE: Each correct selection is worth one point.



- A. Mastered
- B. Not Mastered

Answer: A

Explanation:



NEW QUESTION 144

Note: This question is part of a series of questions that present the same scenario. Each question in the series contains a unique solution that might meet the stated goals. Some question sets might have more than one correct solution, while others might not have a correct solution.

After you answer a question in this section, you will NOT be able to return to it. As a result, these questions will not appear in the review screen.

You have a server named Web1 that runs Windows Server 2016.

You need to list all the SSL certificates on Web1 that will expire during the next 60 days. Solution: You run the following command.

Get-ChildItem Cert:\LocalMachine\My |? { \$_.NotAfter -lt (Get-Date).AddDays(60) } Does this meet the goal?

- A. Yes
- B. No

Answer: B

NEW QUESTION 149

Note: This question is part of a series of questions that use the same or similar answer choices. An answer choice may be correct for more than one question in the series. Each question is independent of the other questions in this series.

Information and details provided in a question apply only to that question.

Your network contains an Active Directory domain named contoso.com. The domain contains 5,000 user accounts.

You have a Group Policy object (GPO) named DomainPolicy that is linked to the domain and a GPO named DCPolicy that is linked to the Domain Controllers organizational unit (OU).

You need to configure the Documents folder of every user to be stored on a server named FileServer1. What should you do?

- A. From the Computer Configuration node of DCPolicy, modify Security Settings.
- B. From the Computer Configuration node of DomainPolicy, modify Security Settings.
- C. From the Computer Configuration node of DomainPolicy, modify Administrative Templates.
- D. From the User Configuration node of DCPolicy, modify Security Settings.
- E. From the User Configuration node of DomainPolicy, modify Folder Redirection.
- F. From user Configuration node of DomainPolicy, modify Administrative Templates.
- G. From Preferences in the User Configuration node of DomainPolicy, modify Windows Settings.
- H. From Preferences in the Computer Configuration node of DomainPolicy, modify Windows Settings.

Answer: E

NEW QUESTION 154

Note: This question is part of a series of questions that use the same or similar answer choices. An answer choice may be correct for more than one question in the series. Each question is independent of the other questions in this series. Information and details provided in a question apply only to that question. Your network contains an Active Directory domain named contoso.com. You recently deleted 5,000 objects from the Active Directory database. You need to reduce the amount of disk space used to store the Active Directory database on a domain controller.

- A. Dsadd quota
- B. Dsmmod
- C. Active Directory Administrative Center
- D. Dsacsls
- E. Domain
- F. Active Directory Users and Computers
- G. Ntdsutil
- H. Group Policy Management Console

Answer: G

NEW QUESTION 157

You have users that access web applications by using HTTPS. The web applications are located on the servers in your perimeter network. The servers use certificates obtained from an enterprise root certification authority (CA). The certificates are generated by using a custom template named WebApps. The certificate revocation list (CRL) is published to Active Directory.

When users attempt to access the web applications from the Internet, the users report that they receive a revocation warning message in their web browser. The users do not receive the message when they access the web applications from the intranet.

You need to ensure that the warning message is not generated when the users attempt to access the web applications from the Internet.

What should you do?

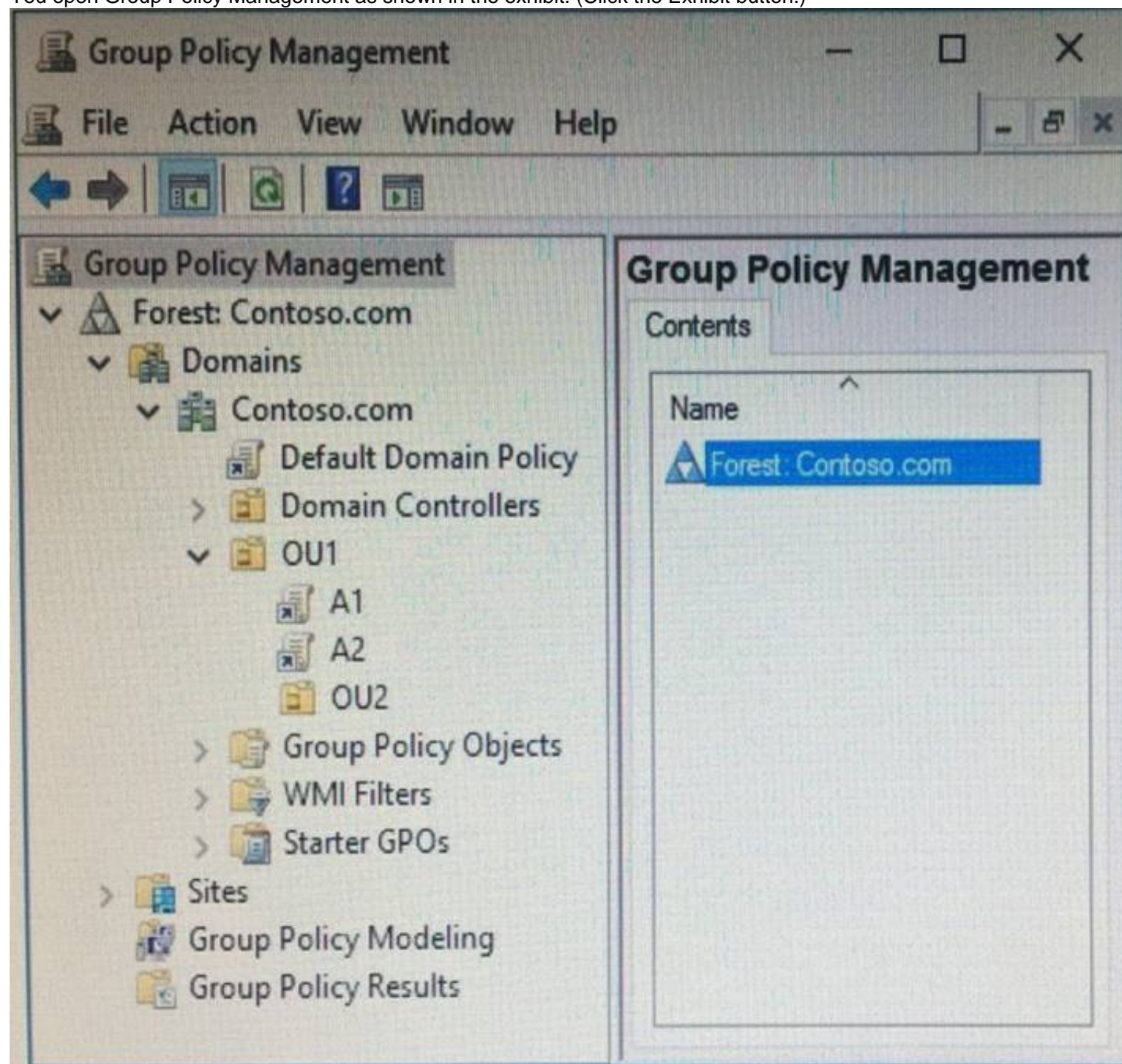
- A. Install the Certificate Enrollment Web Service role service on a server in the perimeter network.
- B. Modify the WebApps certificate template, and then issue the certificates used by the web application servers.
- C. Install the Web Application Proxy role service on a server in the perimeter network.
- D. Create a publishing point for the CA.
- E. Modify the CRL distribution point, and then reissue the certificates used by the web application servers.

Answer: C

NEW QUESTION 159

Your network contains an Active Directory domain named contoso.com.

You open Group Policy Management as shown in the exhibit. (Click the Exhibit button.)



You discover that some of the settings configured in the A1 Group Policy object (GPO) fail to apply to the users in the OU1 organizational unit (OU). You need to ensure that all of the settings in A1 apply to the users in OU1. What should you do?

- A. Enable loopback policy processing in A1.
- B. Block inheritance on OU1.
- C. Modify the policy processing order for OU1.
- D. Modify the GPO Status of A1.

Answer: C

NEW QUESTION 162

You network contains an Active Directory domain named contoso.com. The domain contains an Active Directory Federation Services (AD FS) server named ADFS1, a Web Application Proxy server named WAP1, and a web server named Web1.
You need to publish a website on Web1 by using the Web Application Proxy. Users will authenticate by using OAuth2 preauthentication.
What should you do first?

- A. On Web1, add site bindings.
- B. On Web1, add handler mappings.
- C. On ADFS1, enable an endpoint.
- D. On ADFS1, add a claims provider trust.

Answer: D

NEW QUESTION 164

Your company has a marketing department and a security department.
The network contains an Active Directory domain named contoso.com. The domain contains an enterprise certification authority (CA).
You have two organizational units (OUs) named MKT_UsersOU and MKT_ComputersOU. MKT_UsersOU contains the user accounts for the users in the marketing department. MKT_ComputersOU contains the computer accounts for the computers in the marketing department.
A Group policy object (GPO) named GPO1 is linked to MKT_UsersOU. A GPO named GPO2 linked to MKT_ComputersOU.
You plan to deploy a web application for the marketing department users. The application will require certificates for authentication.
The security department configures the CA to support the planned deployment.
You need to ensure that the web application can authenticate the marketing department users. What should you do?

- A. From the User Configuration node of GPO1, create an Internet Setting preference.
- B. From the User Configuration node of GPO1, configure the Certificate Services Client - Auto enrollment settings.
- C. From the Computer Configuration node of GPO2, configure the Certificate Services Client - Certificate Enrollment Policy settings.
- D. From the Computer Configuration node of GPO2, create the Automatic Certificate Request Settings.

Answer: A

NEW QUESTION 168

You network contains an Active Directory domain named contoso.com. The domain contains an enterprise certification authority (CA).
A user named Admin1 is a member of the Domain Admins group.
You need to ensure that you can archive keys on the CA. The solution must use Admin1 as a key recovery agent.
Which four actions should you perform in sequence? To answer, move the appropriate actions from the list of actions to the answer area and arrange them in the correct order.

Actions	Answer Area
From the Certificate Templates console, modify the extensions of a certificate template.	
From Server Manager, install the Online Responder role service.	
From the Certificates Console, request a certificate.	
From the Certification Authority console, add a certificate template to issue.	
From the Certification Authority console, add a Key Recovery Agent certificate.	
From the Certification Authority console, issue a pending request.	
From the Certificate Templates console, modify the security of a certificate template.	

- A. Mastered
- B. Not Mastered

Answer: A

Explanation:

Actions

Answer Area

From the Certificate Templates console, modify the extensions of a certificate template.

From Server Manager, install the Online Responder role service.

From the Certificates Console, request a certificate.

From the Certification Authority console, add a certificate template to issue.

From the Certification Authority console, add a Key Recovery Agent certificate.

From the Certification Authority console, issue a pending request.

From the Certificate Templates console, modify the security of a certificate template.

From the Certificates Console, request a certificate.

From the Certificate Templates console, modify the security of a certificate template.

From the Certification Authority console, add a Key Recovery Agent certificate.

From the Certification Authority console, issue a pending request.

NEW QUESTION 172

Your company implements Active Directory Federation Services (AD FS).

You confirm that the company meets all the prerequisites for using Microsoft Azure Multi-Factor Authentication (MFA) and AD FS.

You need to ensure that you can select MFA as the primary authentication method for AD FS.

Which three actions should you perform in sequence? To answer move the appropriate actions from the list of actions to the answer area and arrange them in the correct order.

Actions

Answer Area

Add a claims provider trust.

Run the New-AdfsAzureMfatenant Certificate cmdlet.

Run the New-MSolServicePrincipal Credential cmdlet.

Edit the authentication methods.

Run the Set-AdfsAzureMfaTenant cmdlet.

1.

2.

3.

- A. Mastered
B. Not Mastered

Answer: A

Explanation:

Actions**Answer Area****Add a claims provider trust.****Run the New-AdfsAzureMfatenant Certificate cmdlet.****Run the New-MsolServicePrincipal Credential cmdlet.****Edit the authentication methods.****Run the Set-AdfsAzureMfaTenant cmdlet.****1. Run the New-AdfsAzureMfatenant Certificate cmdlet.****2. Run the New-MsolServicePrincipal Credential cmdlet.****3. Run the Set-AdfsAzureMfaTenant cmdlet.****NEW QUESTION 174**

Note: This question is part of a series of questions that present the same scenario. Each question in the series contains a unique solution that might meet the stated goals. Some question sets might have more than one correct solution, while others might not have a correct solution.

After you answer a question in this section, you will NOT be able to return to it. As a result, these questions will not appear in the review screen.

You network contains an Active Directory forest named contoso.com. The forest contains an Active Directory Rights Management Services (AD RMS) deployment.

Your company establishes a partnership with another company named Fabrikam, Inc. The network of Fabrikam contains an Active Directory forest named fabrikam.com and an AD RMS deployment.

You need to ensure that the users in contoso.com can access rights protected documents sent by the users in fabrikam.com.

Solution: From AD RMS in contoso.com, you configure fabrikam.com as a trusted publisher domain. Does this meet the goal?

- A. Yes
- B. No

Answer: A

NEW QUESTION 178

Your network contains an Active Directory domain. All client computers run Windows 10.

A client computer named Computer1 was in storage for five months and was unused during that time. You attempt to sign in to the domain from Computer1 and receive an error message.

You need to ensure that you can sign in to the domain from Computer1. What should you do?

- A. Unjoin Computer1 from the domain, and then join the computer to the domain.
- B. From Active Directory Administrative Center, reset the computer account of Computer1.
- C. From Active Directory Administrative Center, disable Computer1, and then enable the computer account of Computer1.
- D. From Active Directory Users and Computers, run the Delegation of Control Wizard.

Answer: B

NEW QUESTION 179

Your network contains an Active Directory forest. The forest contains two domains named litwarenc.com and contoso.com. The contoso.com domain contains two domain controllers named LON-DC01 and LON-DC02.

The domain controllers are located in a site named London that is associated to a subnet of 192.168.10.0/24

You discover that LON-DC02 is not a global catalog server. You need to configure LON-DC02 as a global catalog server.

What should you do?

- A. From the properties of the LON-DC02 computer account in Active Directory Users and Computers, modify the NTDS settings.
- B. From the properties of the LON-DC02 computer account in Active Directory Users and Computers, modify the City attribute.
- C. From Active Directory Sites and Services, modify the properties of the 192.168.10.0/24 IP subnet.
- D. From the properties of the Domain Controllers organizational unit (OU) in Active Directory Users and Computers, modify the Security settings.

Answer: A

NEW QUESTION 180

Your company has a marketing department.

The network contains an Active Directory domain named contoso.com.

The main office contains three domain controllers. Each branch office contains one domain controller.

You discover that new settings in the Default Domain Policy are not applied on one of the branch offices, but all other Group Policy objects (GPOs) are applied.

You need to check the replication of the Default Domain Policy for the branch Office. What should you do from a domain controller in the main office?

- A. From Windows Power Shell, run the Get-GPO Report cmdlet.

- B. From a command prompt, run repadmin.exe.
- C. From a command prompt, run dcdiag.exe.
- D. From Group Policy Management, click Default Domain Policy under Contoso.com

Answer: A

NEW QUESTION 184

Your network contains an Active Directory domain named contoso.com. The domain contains a user named User1 and an organizational unit (OU) named OU1. You create a Group Policy object (GPO) named GPO1. You need to ensure that User1 can link GPO1 to OU1. What should you do?

- A. Modify the security setting of User1.
- B. Add User1 to the Group Policy Creator Owner group.
- C. Modify the security setting of OU1.
- D. Modify the security setting of GPO1.

Answer: D

NEW QUESTION 186

Your network contains an Active Directory domain named contoso.com. The domain contains two servers named Server1 and Server2 that run Windows Server 2016.

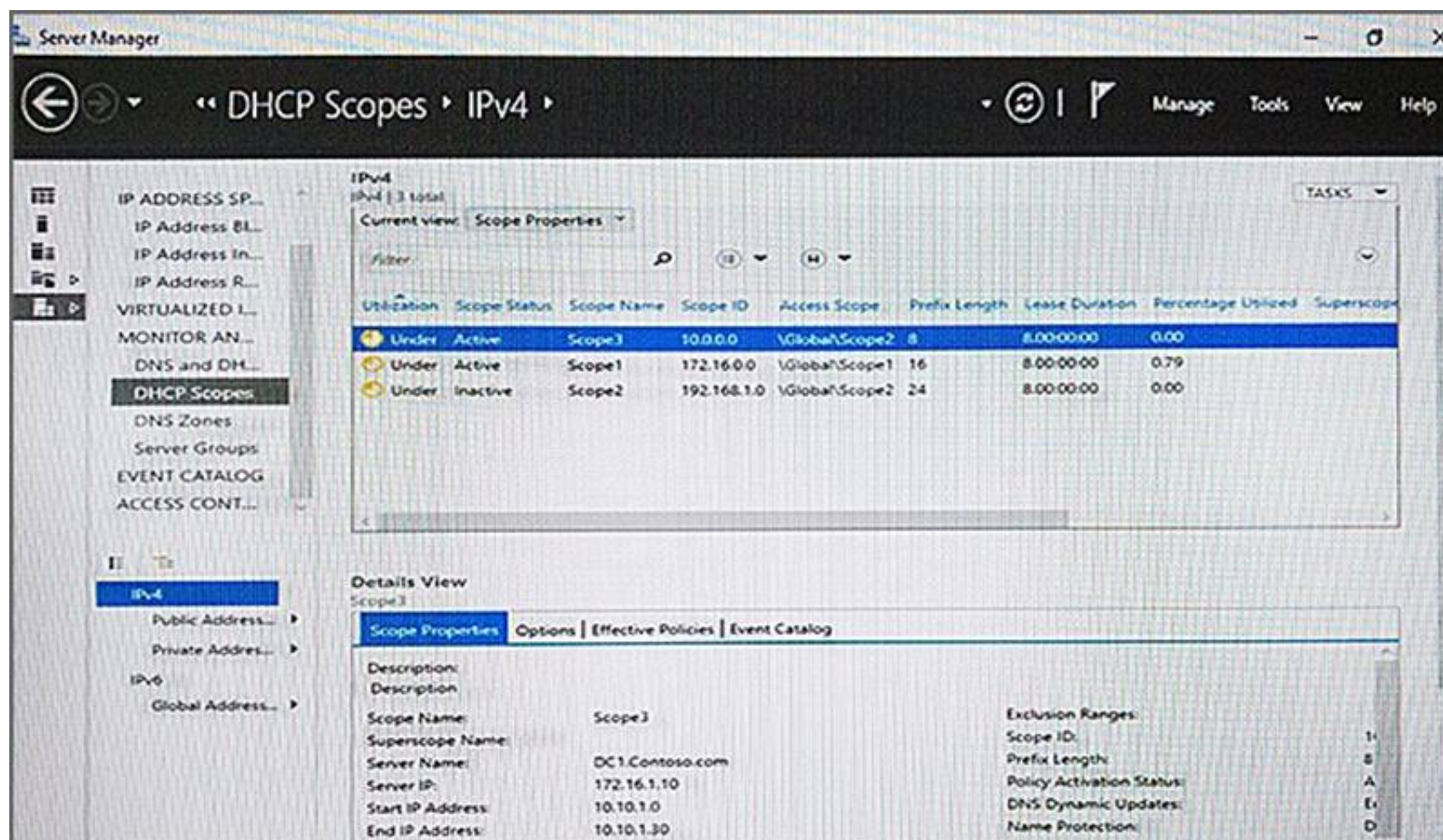
Server1 has IP Address Management (IPAM) installed. Server2 has the DHCP Server role installed. The IPAM server retrieves data from Server2.

The domain has two users named User1 and User2 and a group named Group1. User1 is the only member of Group1.

Server1 has one IPAM access policy. You edit the access policy as shown in the Policy exhibit. (Click the Exhibit button.)

Role	Access Scope
IPAM DHCP Scope Administra...	GlobalScope2

The DHCP scopes are configured as shown in the Scopes exhibit. (Click the Exhibit button.)



For each of the following statements, select Yes if the statement is true. Otherwise, select No.

Answer Area

Statements	Yes	No
User1 can modify the description of Scope1.	<input type="radio"/>	<input type="radio"/>
User2 can modify the description of Scope1.	<input type="radio"/>	<input type="radio"/>
User1 can modify the description of Scope2.	<input type="radio"/>	<input type="radio"/>

- A. Mastered
B. Not Mastered

Answer: A

Explanation:

Answer Area

Statements	Yes	No
User1 can modify the description of Scope1.	<input checked="" type="radio"/>	<input type="radio"/>
User2 can modify the description of Scope1.	<input type="radio"/>	<input checked="" type="radio"/>
User1 can modify the description of Scope2.	<input type="radio"/>	<input checked="" type="radio"/>

NEW QUESTION 190

Your network contains two Active Directory forests named fabrikam.com and contoso.com. Each forest contains a single domain. Contoso.com has a Group Policy object (GPO) named Cont_GPO1.

You need to apply the settings from Cont_GPO1 to the computers in fabrikam.com. Which two actions should you perform? Each correct answer presents part of the solution. NOTE: Each correct selection is worth one point.

- A. Back up Cont_GPO1. In fabrikam.com, create and link a new GPO by using the Group Policy Management Console (GPMC), and then run the Import Setting Wizard.

- B. Back up Cont_GPO1. In fabrikam.com, run the Restore-GPO cmdlet, and then run the New-GPLinkcmdlet.
C. Back up Cont_GPO1. In fabrikam.com run the Import-GPO cmdlet, and then run the New-GPLinkcmdlet.
D. Copy\\contoso.com\SysVol\contoso.com\Policies to \\fabrikam.com\SysVol\ fabrikam.com\Policie
E. In fabrikam.com, run the New-GPLink cmdlet.
F. Back up Cont_GPO1. In fabrikam.com, create and link a new GPO by using the Group Policy Management Console (GPMC), and then run the Restore Group Policy Object Wizard.

Answer: AC

NEW QUESTION 193

Note: This question is part of a series of questions that present the same scenario. Each question in the series contains a unique solution that might meet the stated goals. Some question sets might have more than one correct solution, while others might not have a correct solution.

After you answer a question in this section, you will NOT be able to return to it. As a result, these questions will not appear in the review screen.

You deploy a new Active Directory forest.

You need to ensure that you can create a group Managed Service Account (gMSA) for multiple member servers.

Solution: From Windows PowerShell on a domain controller, you run the Add-KdsRootKey cmdlet.

Does this meet the goal?

- A. Yes
B. No

Answer: A

NEW QUESTION 196

Your network contains an Active Directory domain.

Users do not have administrative privileges to their client computer You modify a computer setting in a Group Policy object (GPO).

You need to ensure that the setting is applied to five client computers as soon as possible. What should you do?

- A. From a domain controller, run the gpupdate.exe command and specify the Force parameter.
B. From each client computer, run the gpreresult.exe command and specify the /r parameter.
C. From each client computer, run the Get-Gpo cmdlet and specify the -alt parameter.
D. From a domain controller, run the Invoke-GPUupdate cmdlet.

Answer: D

Explanation:

[https://technet.microsoft.com/en-us/library/hh852337\(v=ws.11\).aspx](https://technet.microsoft.com/en-us/library/hh852337(v=ws.11).aspx)

NEW QUESTION 198

Your network contains an Active Directory domain named contoso.com, All users are in an organizational unit (OU) named Corp_Users.

You plan to modify the description of all the users who have a string of 514 in their mobile phone number. You need to view a list of the users that will be modified. What should you run?

- A. Get-APUser-Filter "mobilePhone-Like '*514*'"
B. Get-ADOrganizationalUnit-LDAPFilter "(mobilePhone='*514*')"
C. Get-ADOrganizationalUnit-Filter "mobilePhone-Like '*514* '"
D. Get-ADUser-LDAPFilter "(mobilePhone='*514*')"

Answer: A

NEW QUESTION 200

Your network contains an Active Directory domain named contoso.com. You deploy a standalone root certification authority (CA) named CA1.

You need to auto enroll domain computers for certificates by using a custom certificate template. What should you do first?

- A. Modify the Policy Module for CA1.
B. Modify the Exit Module for CA1.
C. Install a standalone subordinate CA.
D. Install an enterprise subordinate CA.

Answer: D

Explanation:

You can't create templates or configure auto-enrollment on a standalone CA.

NEW QUESTION 204

You create a user account that will be used as a template for new user accounts.

Which setting will be copied when you copy the user account from Active Directory Users and Computers?

- A. Published Certificates
B. the Member of attribute
C. the Office attribute
D. the Description attribute

Answer: B

NEW QUESTION 206

Your network contains an Active Directory domain named contoso.com. The domain contains two servers named Server1 and Server2 that run Windows Server 2016.

Server1 has IP Address Management (IPAM) installed. Server2 has Microsoft System Center 2016 Virtual Machine Manager (VMM) installed.

You need to integrate IPAM and VMM.

Which types of objects should you create on each server? To answer, drag the appropriate object types to the correct servers. Each object type may be used once, more than once, or not at all. You may need to drag the split bar between panes or scroll to view content.

Objects

Access Policy

Run As Account

User Role

Network Service

Service Template

Answer Area

Server1:

Object

Server2:

Object

Object

- A. Mastered
- B. Not Mastered

Answer: A

Explanation:

Server 1 (IPAM): Access Policy

VMM must be granted permission to view and modify IP address space in IPAM, and to perform remote management of the IPAM server. VMM uses a “Run As” account to provide these permissions to the IPAM network service plugin. The “Run As” account must be configured with appropriate permission on the IPAM server.

To assign permissions to the VMM user account

In the IPAM server console, in the upper navigation pane, click ACCESS CONTROL, right-click Access Policies in the lower navigation pane, and then click Add AccessPolicy.

Etc.

Server 2 (VMM) #1: Network Service Server 2 (VMM) #2: Run As Account

Perform the following procedure using the System Center VMM console. To configure VMM (see step 1-3, step 6-7)

Create Run As Account

Provide the details for this Run As account

Name: VMM User

Description: This domain account is used exclusively by this instance of VMM to integrate with the IPAM server IPAM1.contoso.com

User name: contoso\vmuser
Example: contoso\domainuser or localuser

Password: ●●●●●●●●

Confirm password: ●●●●●●●●

☒ Validate domain credentials

View Script OK Cancel

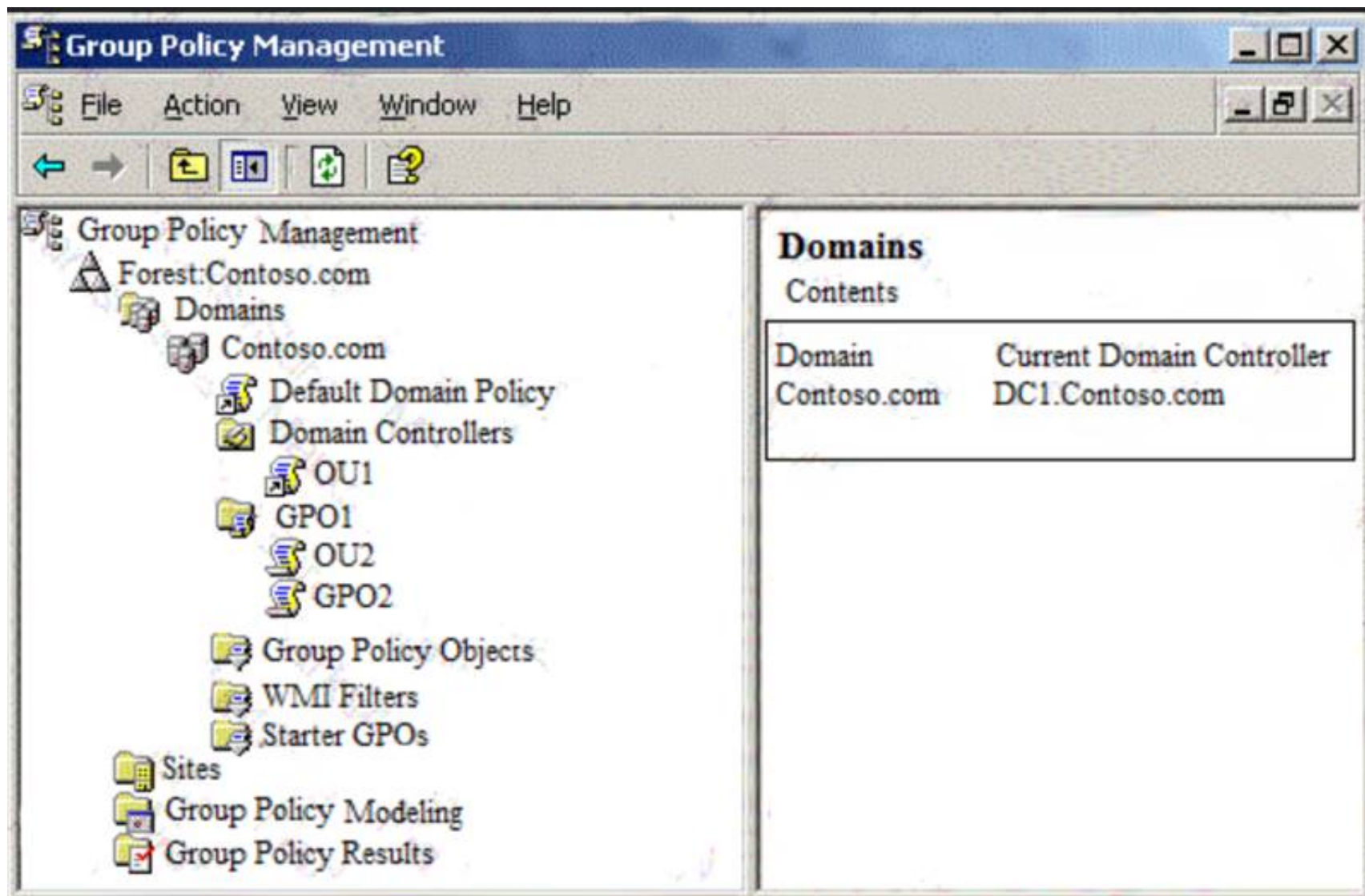
Etc.

References: [https://technet.microsoft.com/en-us/library/dn783349\(v=ws.11\).aspx](https://technet.microsoft.com/en-us/library/dn783349(v=ws.11).aspx)

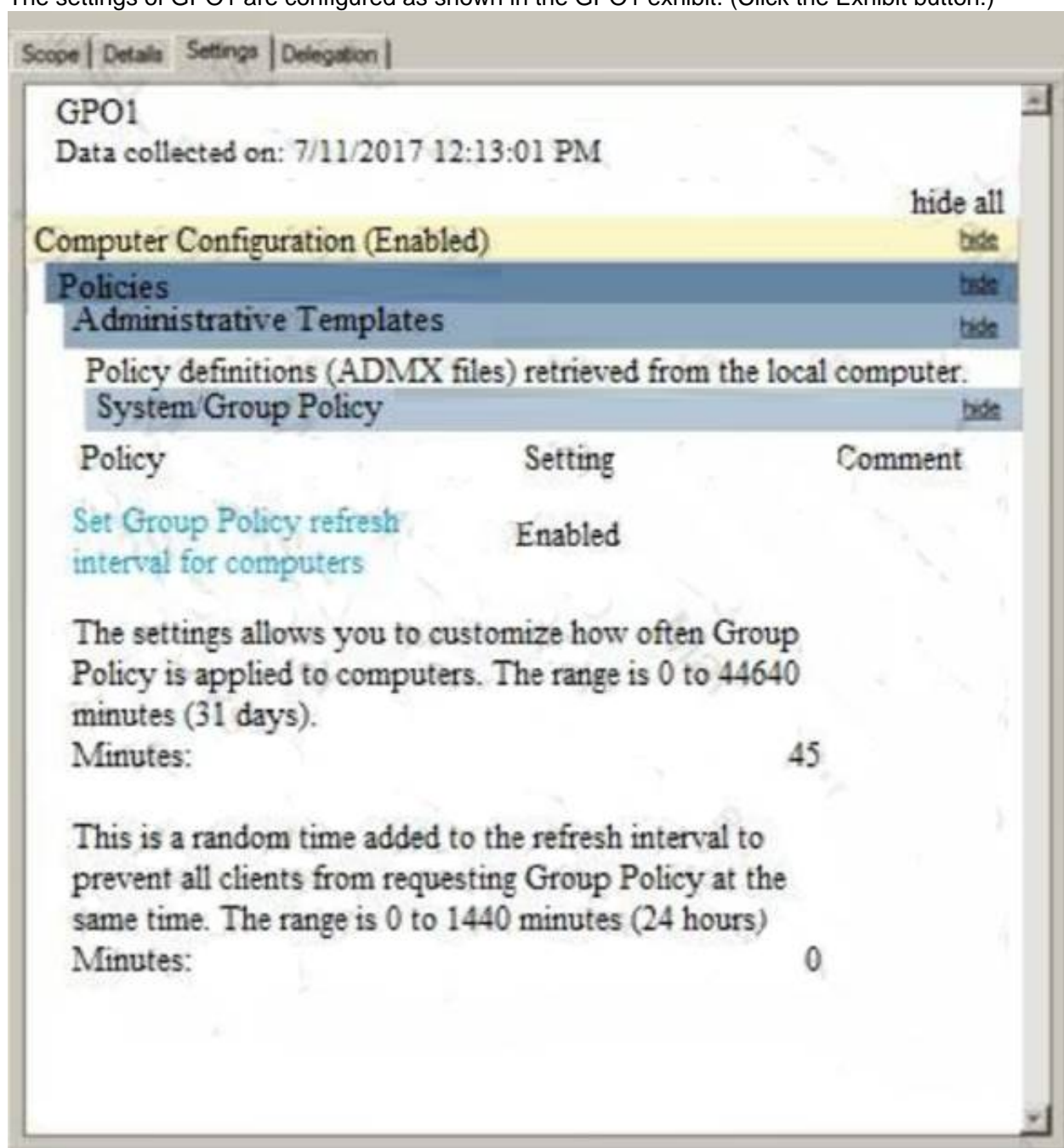
NEW QUESTION 207

Your network contains an Active Directory domain named contoso.com.

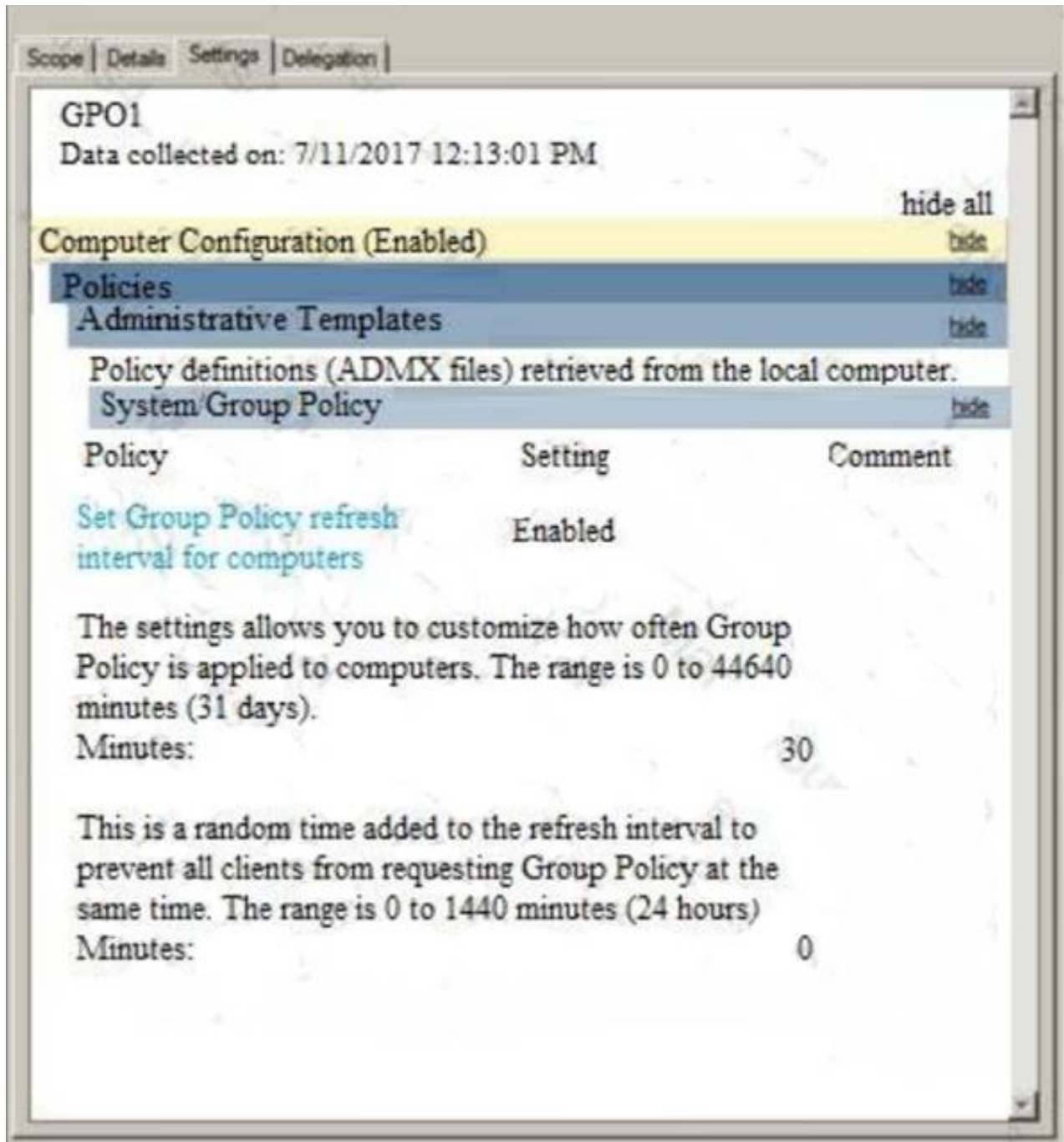
You open Group Policy Management as shown in the Group Policy Management exhibit. (Click the Exhibit button.)



A user named User1 is in OU1. A computer named Computer2 is in OU2.
The settings of GPO1 are configured as shown in the GPO1 exhibit. (Click the Exhibit button.)



The settings of GPO2 are configured as shown in the GPO2 exhibit. (Click the Exhibit button.)



For each of the following statements, select Yes if the statement is true. Otherwise, select No. NOTE: Each correct selection is worth one point.

Answer Area

Statements	Yes	No
User1 signs in to Computer2. The user Group Policy settings will refresh every 45 minutes.	<input type="radio"/>	<input type="radio"/>
User1 signs in to Computer2. The computer Group Policy will refresh every 30 minutes.	<input type="radio"/>	<input type="radio"/>
Contoso/Administrator signs in to Computer2. The user group Policy settings will refresh every 45 minutes.	<input type="radio"/>	<input type="radio"/>

- A. Mastered
- B. Not Mastered

Answer: A

Explanation:

Answer Area

Statements	Yes	No
User1 signs in to Computer2. The user Group Policy settings will refresh every 45 minutes.	<input type="radio"/>	<input checked="" type="radio"/>
User1 signs in to Computer2. The computer Group Policy will refresh every 30 minutes.	<input checked="" type="radio"/>	<input type="radio"/>
Contoso/Administrator signs in to Computer2. The user group Policy settings will refresh every 45 minutes.	<input type="radio"/>	<input checked="" type="radio"/>

NEW QUESTION 211

Your network contains an Active Directory domain named contoso.com.

All the accounts of the users in the sales department are in an organizational unit (OU) named SalesOU. An application named App1 is deployed to the user accounts in SalesOU by using a Group Policy object (GPO) named SalesGPO. You need to set the registry value of \HKEY_CURRENT_USER\Software\App1\Collaboration to 0.

Solution: You add a user preference that has an Replace action. Does this meet the goal?

- A. Yes
- B. No

Answer: A

Explanation:

[https://technet.microsoft.com/en-us/library/cc753092\(v=ws.11\).aspx](https://technet.microsoft.com/en-us/library/cc753092(v=ws.11).aspx)

NEW QUESTION 214

Your network contains an Active Directory domain. The domain contains an organizational unit (OU) named FileServersOU. A Group Policy object (GPO) named GPO1 is linked to FileServersOU. FileServersOU contains all the file servers in the domain.

You make an urgent security edit to GPO1.

You need to ensure that all the file servers receive the updated setting as soon as possible. What should you do?

- A. Right-click FileServersOU and click Group Policy Update...
- B. Right-click the GPO link for GPO1 and click Enforced.
- C. Right-click Group Policy Results and click Group Policy Results Wizard...
- D. Right-click FileServersOU and click Refresh.

Answer: A

NEW QUESTION 215

Your company has an office in Montreal.

The network contains an Active Directory domain named contoso.com.

You have an organizational unit (OU) named Montreal that contains all of the users accounts for the users in the Montreal office. An office manager in the Montreal office knows each user personally.

You need to ensure that the office manager can provide the users with a new password if the users forget their password. What should you do?

- A. From the Security settings of the Montreal OU, assign the office manager the Reset Password permission.
- B. From the Security settings of each user account in the Montreal OU, assign the office manager the Change Password permission.
- C. Create a Group Policy object (GPO) and link the GPO to the OU of the domain.
- D. Filter the GPO to the Montreal user.
- E. Assign the office manager the Apply Group Policy permission on the GPO.
- F. Configure the Password Policy settings of the GPO.
- G. Create a Group Policy object (GPO) and link the GPO to the Montreal OU.
- H. Assign the office manager the Apply Group Policy permission on the GPO.
- I. Configure the Password Policy settings of the GPO.

Answer: B

NEW QUESTION 218

Your network contains an Active Directory domain named contoso.com. The domain contains two servers named Server1 and Server2 that run Windows Server 2016. The computer accounts of Server1 and Server2 are in the Computers container.

A Group Policy object (GPO) named GPO1 is linked to the domain. GPO1 has multiple computer settings defined and has following the configurations.

```
DisplayName      : GPO1
DomainName       : Contoso.com
Owner            : CONTOSO\Domain Admins
Id              : bf3b4d96-59f6-4d0f-84c3-b9c37180b9ca
GpoStatus        : UserSettingsDisabled
Description      :
CreationTime     : 2/18/2017 7:11:30 AM
ModificationTime : 2/18/2017 9:33:04 AM
UserVersion      : AD Version: 18, SysVol Version: 18
ComputerVersion  : AD Version: 6, SysVol Version: 6
WmiFilter        : WMI1
```

An administrator discovers that GPO1 is not applied to Served. GPO1 is applied to Server2. Which configuration possibly prevents GPO1 from being applied to Server1?

- A. the permissions on the computer object of Server1
- B. the permissions on GPO1
- C. the loopback processing mode in GPO1
- D. the permissions on the Computers container

Answer: B

NEW QUESTION 220

Note: This question is part of a series of questions that use the same or similar answer choices. An answer choice may be correct for more than one question in the series. Each question is independent of the other questions in this series. Information and details provided in a question apply only to that question.

Your network contains an Active Directory domain named contoso.com. The domain contains a domain controller named DC1 that runs Windows Server 2016. You need to create a snapshot of the Active Directory database on DC1. Which tool should you use?

- A. Dsadd quota
- B. Dsmmod
- C. Active Directory Administrative Center
- D. Dsacsls
- E. Dsmmain
- F. Active Directory Users and Computers
- G. Ntdsutil
- H. Group Policy Management Console

Answer: E

NEW QUESTION 221

You have an offline root certification authority (CA) named CA1. CA1 is hosted on a virtual machine. You only turn on CA1 when the CA must be patched or you must generate a key for subordinate CAs. You start CA1, and you discover that the filesystem is corrupted.

You resolve the filesystem corruption and discover that you must reload the CA root from a backup.

When you attempt to run the Restore-CARoleService cmdlet, you receive the following error message: "The process cannot access the file because it is being used by another process."

- A. Stop the Active Directory Domain Services (AD DS) service.
- B. Run the Restore-CARoleService cmdlet and specify the path to a valid CA key.
- C. Stop the Active Directory Certificate Services (AD CS) service.
- D. Run the Restore-CARoleService cmdlet and specify the Force parameter.

Answer: C

NEW QUESTION 222

Your network contains an Active Directory domain named contoso.com. You discover that users can use passwords that contain only numbers.

You need to ensure that all the user passwords in the domain contain at least three of the following types of characters:

- Numbers
 - Uppercase letters
 - Lowercase letters
 - Special characters
- What should you do?

- A. the Default Domain Policy
- B. the local policy on each client computer
- C. the Default Domain Controllers Policy
- D. the local policy on each domain controller

Answer: A

NEW QUESTION 224

Your network contains an Active Directory forest named contoso.com. The forest contains a single domain. The domain contains a server named Server1. An administrator named Admin01 plans to configure Server1 as a standalone certification authority (CA). You need to identify to which group Admin01 must be a member to configure Server1 as a standalone CA. The solution must use the principle of least privilege. To which group should you add Admin01?

- A. Administrators on Server1.
- B. Domain Admins in contoso.com
- C. Cert Publishers on Server1
- D. Key Admins in contoso.com

Answer: A

NEW QUESTION 227

Note: This question is part of a series of questions that use the same or similar answer choices. An answer choice may be correct for more than one question in the series. Each question is independent of the other questions in this series.

Information and details provided in a question apply only to that question.

Your network contains an Active Directory domain named contoso.com. The domain contains 5,000 user accounts.

You have a Group Policy object (GPO) named DomainPolicy that is linked to the domain and a GPO named DCPolicy that is linked to the Domain Controllers organizational unit (OU).

You need to force users to change their account password at least every 30 days. What should you do?

- A. From the Computer Configuration node of DCPolicy, modify Security Settings.
- B. From the Computer Configuration node of DomainPolicy, modify Security Settings.
- C. From the Computer Configuration node of DomainPolicy, modify Administrative Templates.
- D. From the User Configuration node of DCPolicy, modify Security Settings.
- E. From the User Configuration node of DomainPolicy, modify Folder Redirection.
- F. From user Configuration node of DomainPolicy, modify Administrative Templates.
- G. From Preferences in the User Configuration node of DomainPolicy, modify Windows Settings.
- H. From Preferences in the Computer Configuration node of DomainPolicy, modify Windows Settings.

Answer: B

NEW QUESTION 229

Your network contains an Active Directory domain named contoso.com. The domain contains an administrative workstation named WKS1 that runs Windows 10. You have a Group Policy object (GPO) named GPO1.

You download a custom administrative template that contains the following files:

You need to ensure that you can configure GPO1 by using the settings in the new administrative template. To where should you copy each file? To answer, select the appropriate options in the answer area.

NOTE: Each correct selection is worth one point.

Answer Area

App1.adml:

	▼
C:\Windows\PolicyDefinitions	
C:\Windows\PolicyDefinitions\en-US	
C:\Windows\System32\Configuration	
C:\Windows\System32\en-US	

App1.admx:

	▼
C:\Windows\PolicyDefinitions	
C:\Windows\PolicyDefinitions\en-US	
C:\Windows\System32\Configuration	
C:\Windows\System32\en-US	

- A. Mastered
- B. Not Mastered

Answer: A

Explanation:

References:

<https://support.microsoft.com/en-us/help/918239/how-to-write-custom-adm-and-admx-administrative-template-f>

NEW QUESTION 230

Your network contains an Active Directory domain named contoso.com. All the accounts of the users in the sales department are in an organizational unit (OU) named SalesOU.

An application named App1 is deployed to the user accounts in SalesOU by using a Group Policy object (GPO) named Sales GPO.

You need to set the registry value of \HKEY_CURRENT_USER\Software\App1\Collaboration to 0. Solution: You add a computer preference that has a Replace action.

Does this meet the goal?

- A. Yes
- B. NO

Answer: A

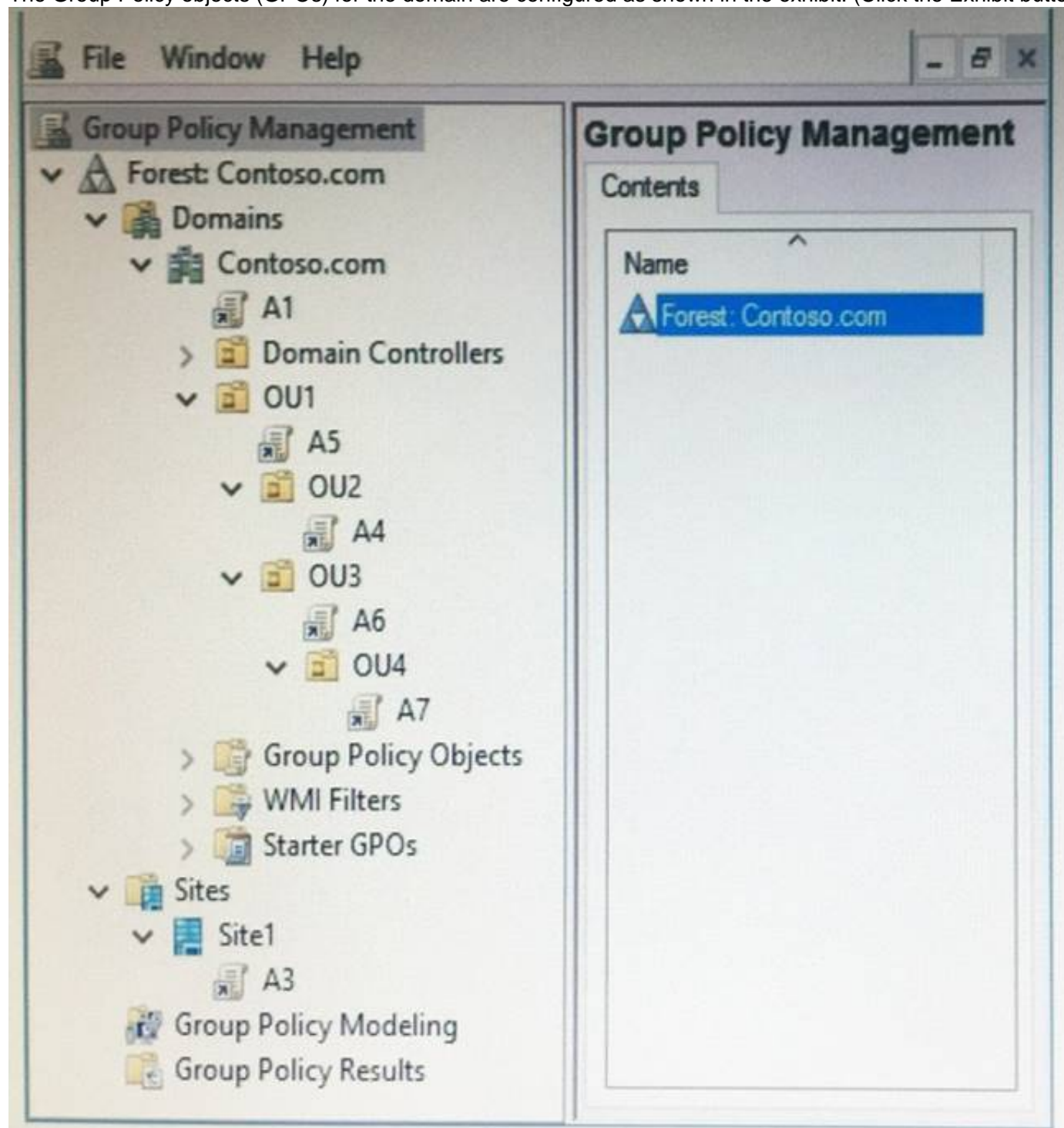
NEW QUESTION 231

Note: This question is part of a series of questions that use the same scenario. For your convenience, the scenario is repeated in each question. Each question presents a different goal and answer choices, but the text of the scenario is exactly the same in each question in this series.

Start of repeated scenario.

Your network contains an Active Directory domain named contoso.com. The domain contains a single site named Site1. All computers are in Site1.

The Group Policy objects (GPOs) for the domain are configured as shown in the exhibit. (Click the Exhibit button.)



The relevant users and client computer in the domain are configured as shown in the following table.

Object name	Object type	Object location
Computer	Computer	OU4
User1	User	OU4
User2	User	OU2

End of repeated scenario.

Which five GPOs will apply to User1 in sequence when the user signs in to Computer1? To answer, move the appropriate GPOs from the list to the answer area and arrange them in the correct order.

GPOs

Answer Area

A1
A3
A4
A5
A6
A7

- A. Mastered
B. Not Mastered

Answer: A

Explanation:

GPOs

Answer Area

A1
A3
A4
A5
A6
A7

A3
A1
A5
A6
A7

NEW QUESTION 234

Your network contains an Active Directory forest named contoso.com.

A partner company has a forest named fabrikam.com. Each forest contains one domain.

You need to provide access for a group named Research in fabrikam.com to resources in contoso.com. The solution must use the principle of least privilege. What should you do?

- A. Create an external trust from fabrikam.com to contoso.co
B. Enable Active Directory split permissions in fabrikam.com.
C. Create an external trust from contoso.com to fabrikam.co
D. Enable Active Directory split permissions in contoso.com.
E. Create a one-way forest trust from contoso.com to fabrikam.com that uses selective authentication.
F. Create a one-way forest trust from fabrikam.com to contoso.com that uses selective authentication.

Answer: C

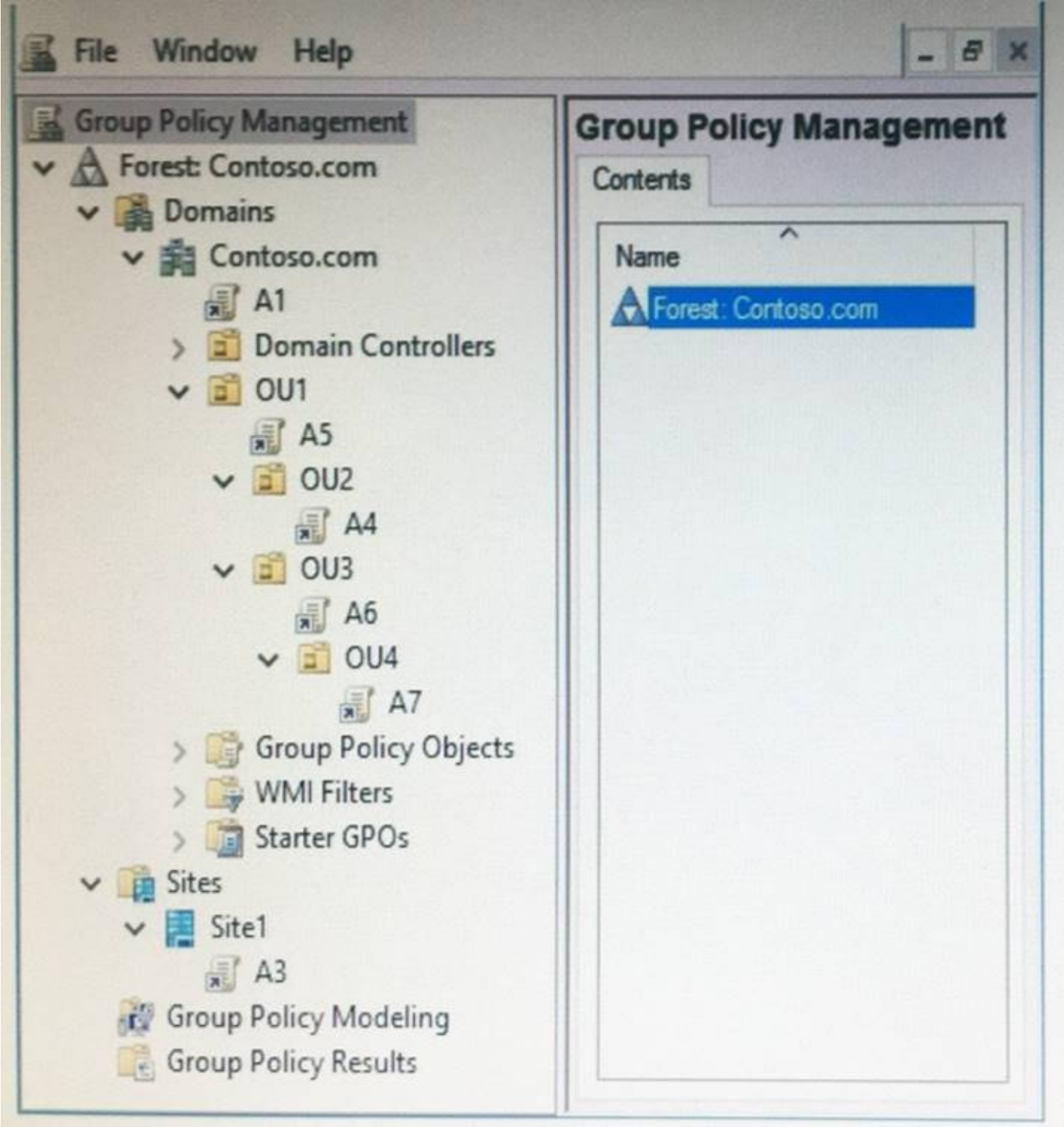
NEW QUESTION 235

Note: This question is part of a series of questions that use the same scenario. For your convenience, the scenario is repeated in each question. Each question presents a different goal and answer choices, but the text of the scenario is exactly the same in each question in this series.

Start of repeated scenario.

Your network contains an Active Directory domain named contoso.com. The domain contains a single site named Site1. All computers are in Site1.

The Group Policy objects (GPOs) for the domain are configured as shown in the exhibit. (Click the Exhibit button.)



The relevant users and client computer in the domain are configured as shown in the following table.

Object name	Object type	Object location
Computer	Computer	OU4
User1	User	OU4
User2	User	OU2

End of repeated scenario.
You plan to enforce the GPO link for A6.
Which five GPOs will apply to User1 in sequence when the user signs in to Computer1 after the link is enforced? To answer, move the appropriate GPOs from the list of GPOs to the answer area and arrange them in the correct order.

GPOs

Answer Area

A1

A2

A3

A4

A5

A6

A7

- A. Mastered
B. Not Mastered

Answer: A

Explanation:

GPOs

Answer Area

A1

A2

A3

A4

A5

A6

A7

A3

A1

A5

A7

A6

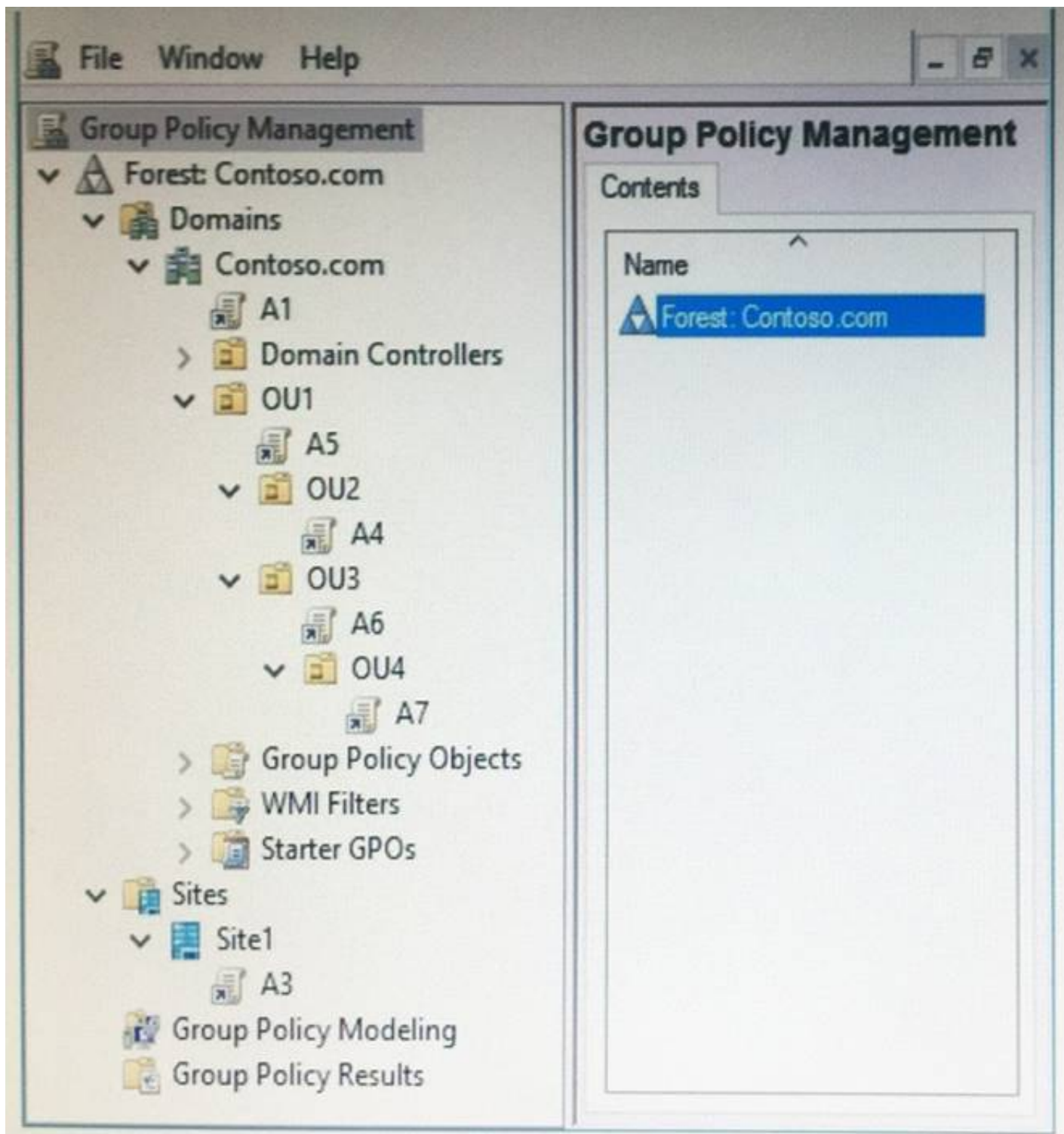
NEW QUESTION 237

Note: This question is part of a series of questions that use the same scenario. For your convenience, the scenario is repeated in each question. Each question presents a different goal and answer choices, but the text of the scenario is exactly the same in each question in this series.

Start of repeated scenario.

Your network contains an Active Directory domain named contoso.com. The domain contains a single site named Site1. All computers are in Site1.

The Group Policy objects (GPOs) for the domain are configured as shown in the exhibit. (Click the Exhibit button.)



The relevant users and client computer in the domain are configured as shown in the following table.

Object name	Object type	Object location
Computer	Computer	OU4
User1	User	OU4
User2	User	OU2

End of repeated scenario.

You are evaluating what will occur when you disable the Group Policy link for A6.

Which GPOs will apply to User2 when the user signs in to Computer1 after the link for A6 is disabled?

- A. A1 and A5 only
- B. A3, A1, and A5 only
- C. A3, A1, A5, and A4 only
- D. A3, A1, A5, and A7

Answer: C

NEW QUESTION 239

You have an enterprise certification authority (CA). You create a global security group named Group1.

You need to provide members of Group1 with the ability to issue and manage certificates. The solution must prevent the Group1 members from managing certificates requested by members of the Domain Admins group.

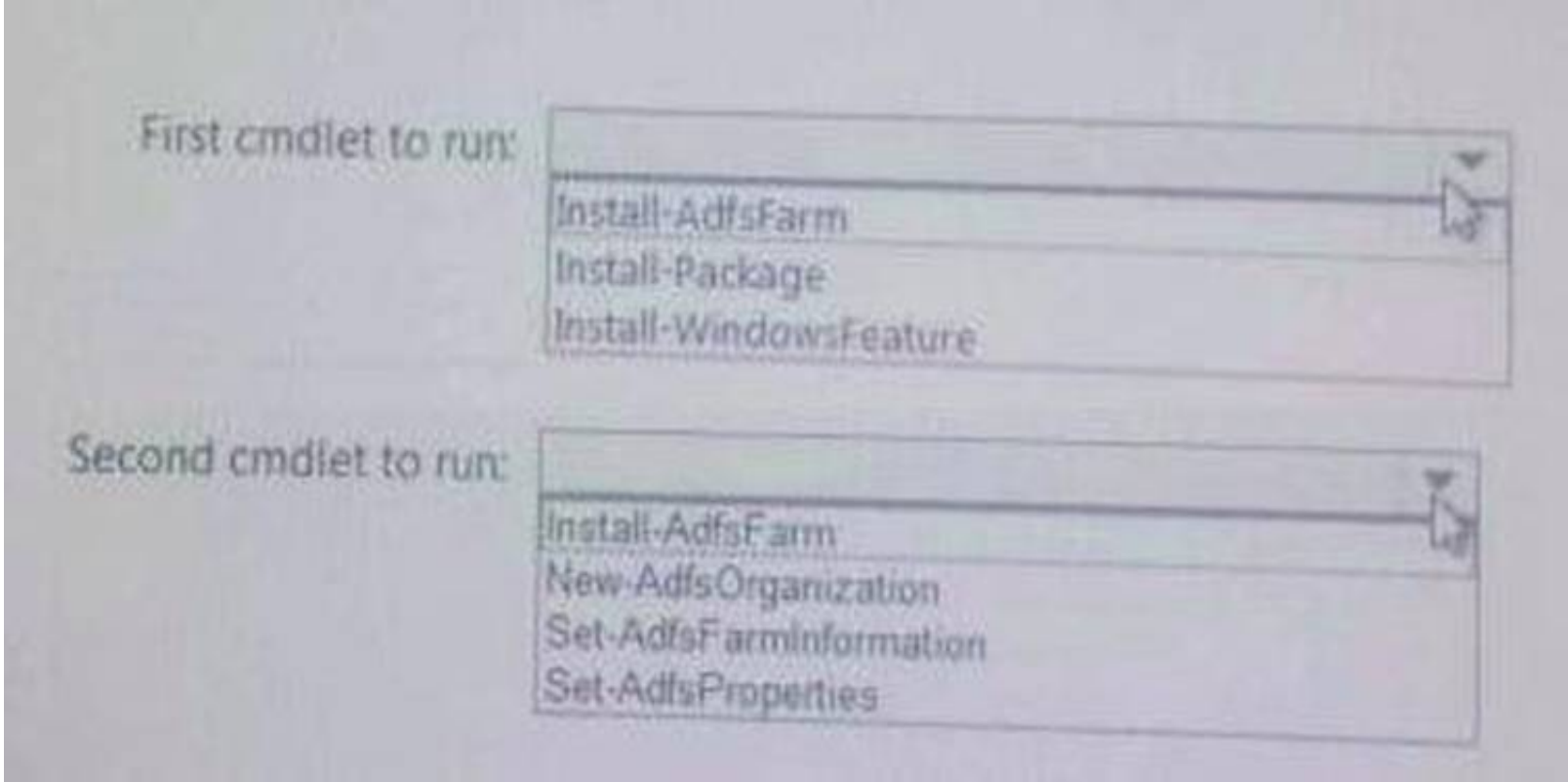
Which two actions should you perform? Each correct answer presents part of the solution. NOTE: Each correct selection is worth one point.

- A. From the CA properties, modify the Policy Module settings.
- B. From the Certificate Templates console, modify the Security settings of the Administrator certificate template.
- C. From the CA properties, modify the security settings.
- D. From the CA properties, modify the Enrollment Agents settings.
- E. From the CA properties, modify the Certificate Managers Settings.
- F. From the Certificate Templates console, modify the Security settings of the User certificate template.

Answer: AE

NEW QUESTION 241

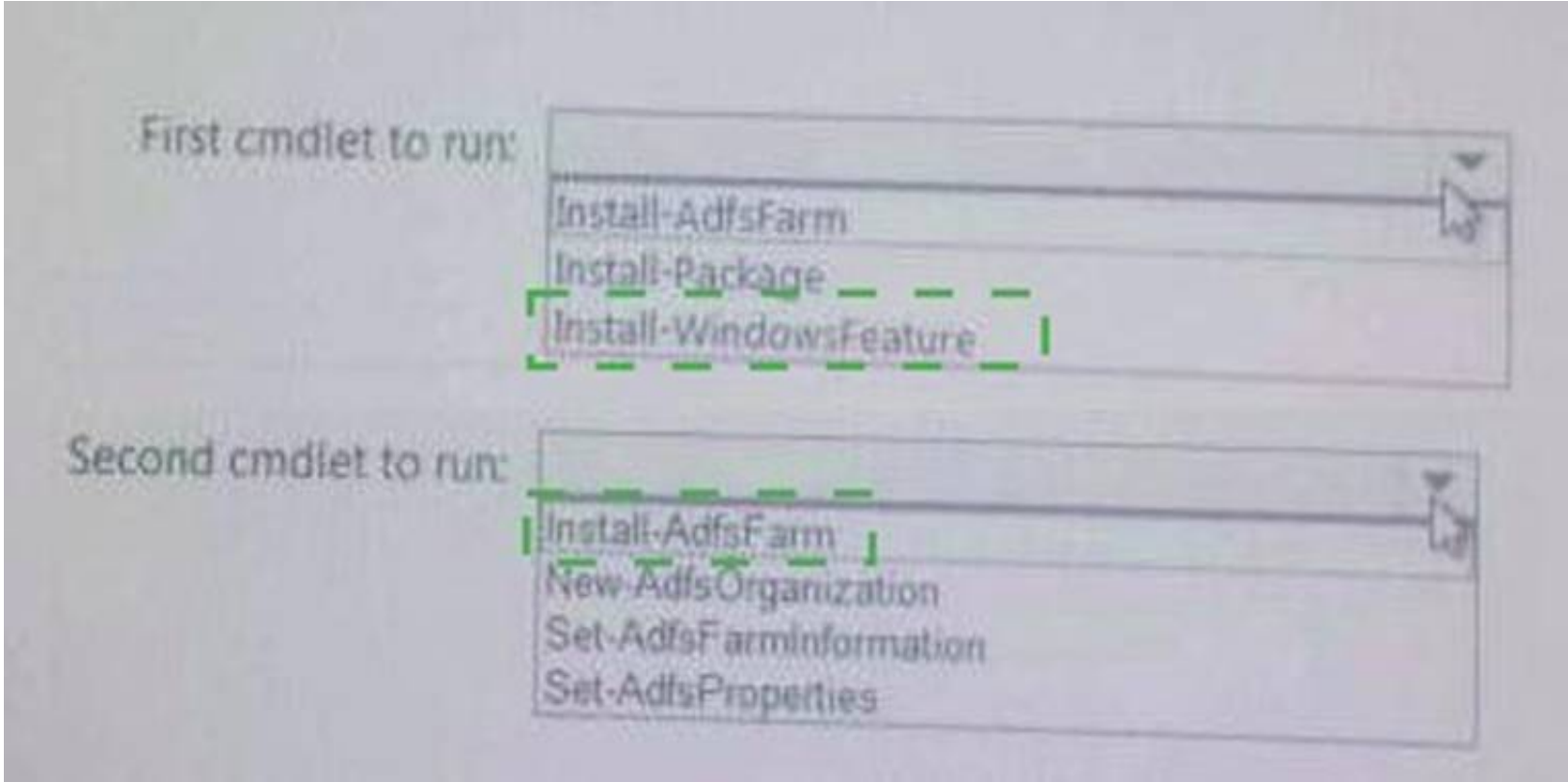
Your network contains an Active Directory forest named contoso.com. The forest contains an Active Directory Federation Services (AD FS) farm. You install Windows Server 2016 on a server named Server2. You need to configure Server2 as a node in the federation server farm. Which cmdlets should you run? To answer, select the appropriate options in the answer area.



- A. Mastered
- B. Not Mastered

Answer: A

Explanation:



NEW QUESTION 246

Your network contains an Active Directory domain named contoso.com. The domain contains a server named Server1 that runs Windows Server 2016. You install IP Address Management (IPAM) on Server1. You select the automatic provisioning method, and then you specify a prefix of IPAM1. You need to configure the environment for automatic IPAM provisioning. Which cmdlet should you run? To answer, select the appropriate options in the answer area.

Answer Area

▼

Add-IpamDiscoveryDomain

Enable-IpamCapability

Invoke-IpamGpoProvisioning

Set-IpamConfiguration

-Domain "Contoso.com"

▼

-AssetTag

-DiscoverDns

-GpoPrefixName

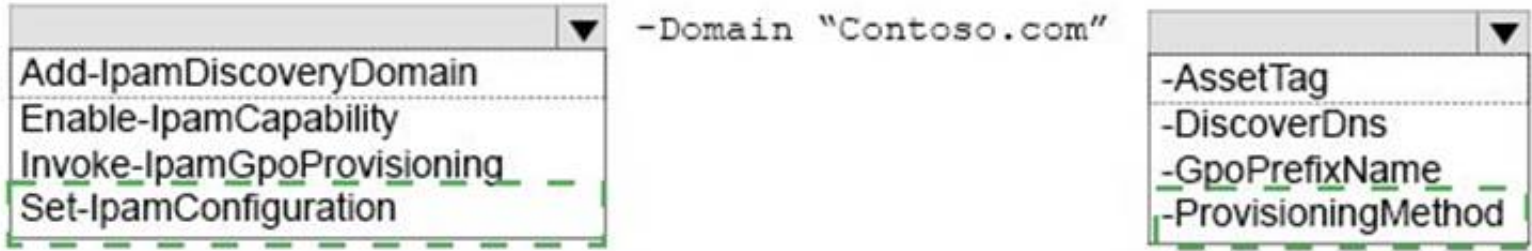
-ProvisioningMethod

- A. Mastered
- B. Not Mastered

Answer: A

Explanation:

Answer Area



NEW QUESTION 249

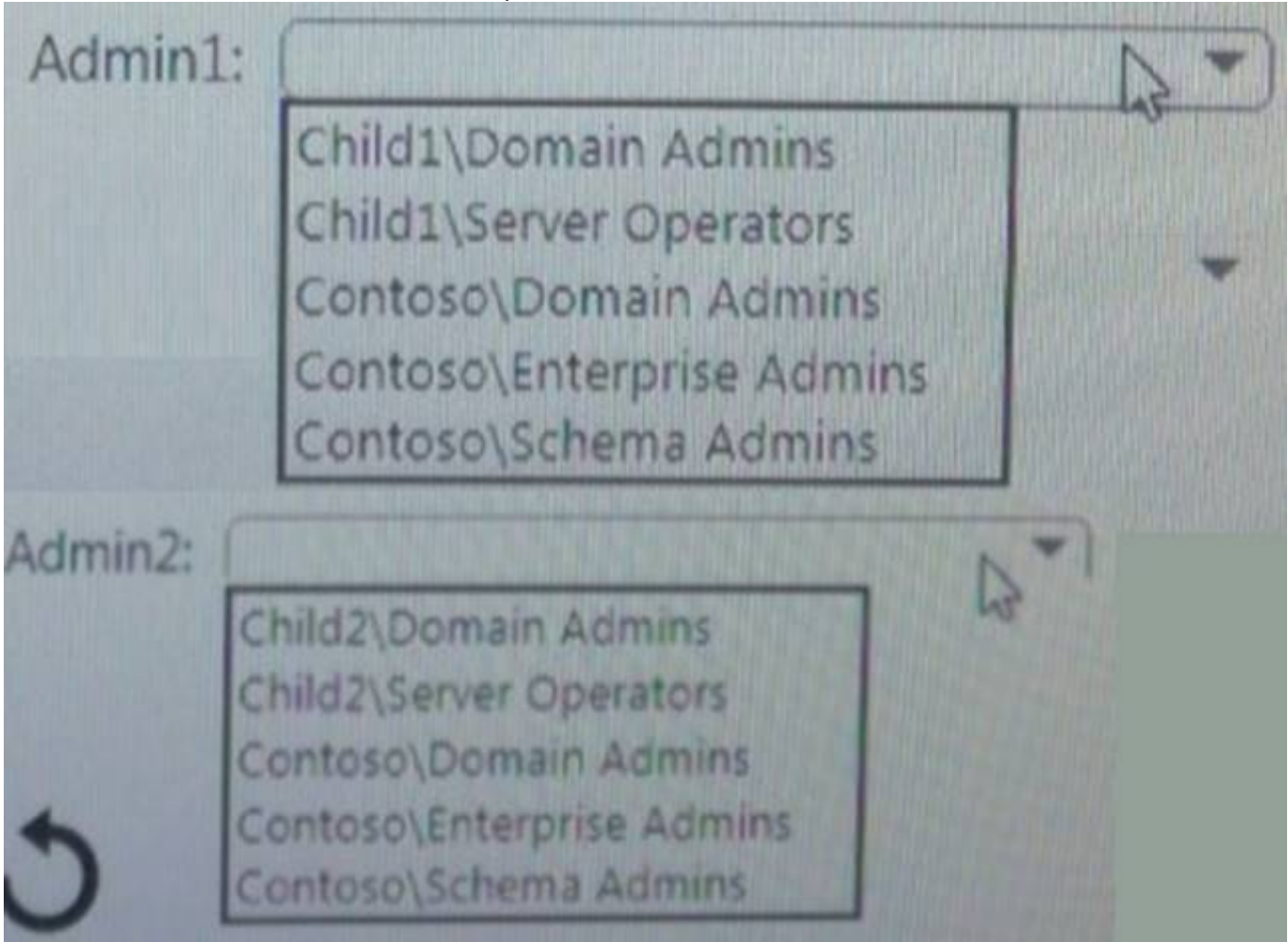
Your network contains an Active Directory domain named contoso.com. The domain contains an enterprise certification authority (CA) named CA1. You duplicate the Computer certificate template, and you name the template Cont_Computers. You need to ensure that all of the certificates issued based on Cont_Computers have a key size of 4,096 bits. What should you do?

- A. From the properties of CA1, modify the Security settings.
- B. From the properties of CA1, modify the Request Handling settings.
- C. From the properties of the Computer template, modify the Key Attestation settings.
- D. From the properties of Cont_Computers, modify the Cryptography settings.

Answer: C

NEW QUESTION 251

Your network contains an Active Directory forest named contoso.com. The forest contains the root domain and two child domains named child1.contoso.com and child2.contoso.com. Child1 contains three domain controllers named DC1, DC2, and DC3. Child2 contains one domain controller named DC4. You have two accounts named Child1\Admin1 and Child2\Admin2 that you use to perform administrative tasks. Currently, the accounts can manage only the member servers in their respective domain. You plan to demote DC3 and to remove the Child2 domain. You need to ensure that Admin1 can demote DC3 and that Admin2 can demote DC4. The solution must use the principle of least privilege. To which groups should you add Admin1 and Admin2? To answer, select the appropriate options in the answer area. NOTE: Each correct selection is worth one point.



- A. Mastered
- B. Not Mastered

Answer: A

Explanation:

Admin1: Contoso\Domain Admins Admin2: Child2\Server Operators

NEW QUESTION 255

Note: This question is part of a series of questions that present the same scenario. Each question in the series contains a unique solution that might meet the stated goals. Some question sets might have more than one correct solution, while others might not have a correct solution.

After you answer a question in this section, you will NOT be able to return to it. As a result, these questions will not appear in the review screen.

Your network contains an Active Directory forest named contoso.com. The forest contains a member server named Server1 that runs Windows Server 2016. All domain controllers run Windows Server 2012 R2.

Contoso.com has the following configuration. PS C:\> (Get-ADForest).ForestMode Windows2008R2Forest

PS C:\> (Get-ADDomain).DomainMode Windows2008R2Domain

PS C:\>

You plan to deploy an Active Directory Federation Services (AD FS) farm on Server1 and to configure device registration.

You need to configure Active Directory to support the planned deployment. Solution: You run adprep.exe from the Windows Server 2016 installation media. Does this meet the goal?

- A. Yes
- B. No

Answer: A

Explanation:
Device Registration requires Windows Server 2012 R2 forest schema.

NEW QUESTION 258

Your network contains an Active Directory domain named contoso.com. The domain contains a server named Server1 that runs Windows Server 2016.

You install IP Address Management (IPAM) on Server1.

You need to manually start discovery of servers that IPAM can manage in contoso.com.

Which three cmdlets should you run in sequence? To answer, move the appropriate cmdlets from the list of cmdlets to the answer area and arrange them in the correct order.

Actions

Start-ScheduledTask

Invoke-IpamServerProvisioning

Update-IpamServer

Add-IpamSubnet

Add-IpamAddress

Add-IpamDiscoveryDomain

Answer Area

⬅

➡

⬆

⬇

- A. Mastered
- B. Not Mastered

Answer: A

Explanation:

Step 1: Invoke-IpamServerProvisioning Choose a provisioning method

The Invoke-IpamGpoProvisioning cmdlet creates and links three group policies specified in the Domain parameter for provisioningrequired access settings on the server roles managed by the computer running the IP Address Management (IPAM) server.

Step 2: Add-IpamDiscoveryDomain Configure the scope of discovery

The Add-IpamDiscoveryDomain cmdlet adds an Active Directory discovery domain for an IP AddressManagement (IPAM) server. A discovery domain is a domain that IPAM searches to find infrastructure servers. An IPAM server uses the list of discovery domains to determine what type of servers to add. By default, IPAM discovers all domain controllers, Dynamic Host Configuration Protocol (DHCP) servers, and Domain Name System (DNS) servers.

Step 3: Start-ScheduledTask Start server discovery

To begin discovering servers on the network, click Start server discovery to launch the IPAM ServerDiscovery task or use the Start-ScheduledTask command.

NEW QUESTION 261

Note: This question is part of a series of questions that use the same or similar answer choices. An answer choice may be correct for more than one question in the series. Each question is independent of the other questions in this series.

Information and details provided in a question apply only to that question.

Your network contains an Active Directory domain named contoso.com. The domain contains 5,000 user accounts.

You have a Group Policy object (GPO) named DomainPolicy that is linked to the domain and a GPO named DCPolicy that is linked to the Domain Controllers organizational unit (OU).

You need to use the application control policy settings to prevent several applications from running on the network.

What should you do?

- A. From the Computer Configuration node of DCPolicy, modify Security Settings.
- B. From the Computer Configuration node of DomainPolicy, modify Security Settings.
- C. From the Computer Configuration node of DomainPolicy, modify Administrative Templates.
- D. From the User Configuration node of DCPolicy, modify Security Settings.
- E. From the User Configuration node of DomainPolicy, modify Folder Redirection.
- F. From user Configuration node of DomainPolicy, modify Administrative Templates.
- G. From Preferences in the User Configuration node of DomainPolicy, modify Windows Settings.
- H. From Preferences in the Computer Configuration node of DomainPolicy, modify Windows Settings.

Answer: B

NEW QUESTION 266

.....

Thank You for Trying Our Product

* 100% Pass or Money Back

All our products come with a 90-day Money Back Guarantee.

* One year free update

You can enjoy free update one year. 24x7 online support.

* Trusted by Millions

We currently serve more than 30,000,000 customers.

* Shop Securely

All transactions are protected by VeriSign!

100% Pass Your 70-742 Exam with Our Prep Materials Via below:

<https://www.certleader.com/70-742-dumps.html>