

## Exam Questions 1Z0-632

PeopleSoft PeopleTools 8.5x Implementation Essentials

<https://www.2passeasy.com/dumps/1Z0-632/>



### NEW QUESTION 1

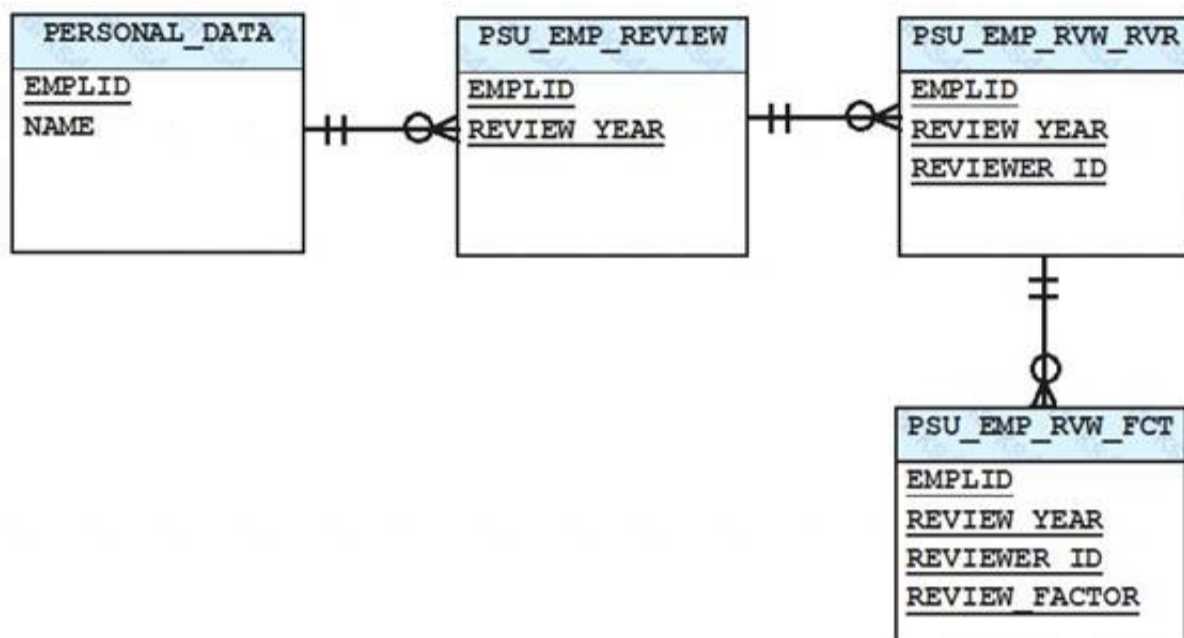
You created a new component and registered it in the portal registry. However, when you test it, the content reference is not shown in the menu navigation. To troubleshoot this issue, examine .

- A. the component structure
- B. the portal registry for component parameters
- C. the portal registry for content reference security
- D. the menu definition for the associated component
- E. the component definition for assigned actions

Answer: D

### NEW QUESTION 2

If you were to create a page displaying information from each of the tables listed in the exhibit, at what occurs level would the fields of the PSU\_EMP\_RVW\_FCT table be on?



- A. 3
- B. 2
- C. 1
- D. 4

Answer: D

### NEW QUESTION 3

View the exhibits.

The screenshot shows a web application window titled "PSU\_CUST\_PROD (Page)". It has two tabs: "Question" and "Exhibit 1". The "Exhibit 1" tab is active, showing a form with the following fields:

- Customer: NNNNN (text input)
- Products Purchased: A dropdown menu with a value of "AAAAA" and a button labeled "I<< %d of %d >>I".
- PeopleSoft Product: A dropdown menu with a value of "AAAAA".
- Database Platform: A dropdown menu with a value of "AAAAA".
- Kick Off Date: A date picker with a value of "AAAAA".
- Anticipated Production Date: A date picker with a value of "AAAAA".
- Production Status: A dropdown menu with a value of "AAAAA".
- Number of Employees: A text input field.
- Number of Clients: A text input field.

Based on the page layout, what is wrong with the search page and how should you fix it?

- A. The Add actions should not be available; check the component definition for the Item Label
- B. Include History and Correction should be displayed; check the Internet tab of the Component Properties dialog box
- C. The Add action should not be available; check the Internet tab of the Component Properties dialog box
- D. Include History and Correction should be displayed; check the Use tab of the Component Properties dialog box
- E. The Add action should not be available; check the Use tab of the Component Properties dialog box

**Answer: D**

#### NEW QUESTION 4

You have these items selected in the Suppress on Form Factor group box on the Fluid tab for a page control.

How will the system treat this control?

- A. PeopleTools will compress the size of this control to reduce the amount of data sent over the wireless network for smartphones and tablets
- B. The control will display only a laptop and desktop computers
- C. The control will display only on smartphones and tablets
- D. The control will consume less space on the page when rendered on a smartphone or tablet

**Answer: D**

#### NEW QUESTION 5

Which two statements are true about how PeopleCode on the SavePreChange and SavePostChange events is processed? (Choose two.)

- A. When placed at the component record level, such PeopleCode triggers a Save when a row is changed
- B. When placed at the component record level, such PeopleCode runs once per row when the user clicks Save
- C. When placed at the component record level, such PeopleCode runs once when the user clicks Save
- D. When placed at the component level, such PeopleCode triggers a Save when data on the page is changed
- E. When placed at the component level, such PeopleCode runs once when the user clicks Save
- F. When placed at the component level, such PeopleCode runs once per row when the user clicks Save

**Answer: BD**

#### NEW QUESTION 6

Assume that you open a PeopleSoft application record definition using Application Designer. Which two of the following statements are false? (Choose two.)

- A. In Application Designer, with a record definition open, you can insert additional fields
- B. Any changes made to the record definition in Application Designer are stored in a PeopleTools table as application metadata
- C. In Application Designer, with a record definition open, you can view transactional application data, such as inventory items provided by a vendor
- D. In Application Designer, with a record definition open, you can add or update transactional application data, such as adding a new inventory item
- E. In Application Designer, with a record definition open, you can modify the key structure of the record definition
- F. In Application Designer, with a record definition open, you can set a record field to be a required field for which an end user must specify a value when adding a new row of transactional data

**Answer: BF**

#### NEW QUESTION 7

You configure embedded pop-up help for a scroll area header or a grid header by .

- A. using the Insert menu to insert a Popup help button on the grid header or scroll area header in place of the Navigation bar
- B. adding a hyperlink or push button to the header linking to the delivered online help
- C. adding a hyperlink or push button to the header linking to your custom online help
- D. selecting Message Catalog Popup on the Label tab of the Grid Properties Dialog box or the Scroll Area Properties dialog box

**Answer: D**

### NEW QUESTION 8

Instructors have complained that they do not have access to a newly registered component and page. The Instructor role that includes the Instructor permission list already exists; both are available for your use. Select the two correct methods that add access for just this user group. (Choose two.)

- A. Modify the content reference (CREF) definition in the portal registry and enable the Author Access option
- B. Re-run the Registration Wizard
- C. Select the option to modify only a permission list, and add the Instructor permission list to this component
- D. Modify the CREF definition in the portal registry and add the Instructor role
- E. Modify the Instructor permission list definition and add access to the new component and page
- F. Modify the CREF definition in the portal registry and add the Instructor permission list
- G. Modify the CREF definition in the portal registry and enable the Public Access option

**Answer: BD**

### NEW QUESTION 9

You have a record definition open in Application Designer, and when you select the Build menu, you notice that the Current Definition option is disabled. (greyed out.)

Why did this happen?

- A. You have already build the table
- B. The record definition Record Type is set to Dynamic View
- C. You saved the record definition using a non-standard SQL table name
- D. You are not connected to the database

**Answer: C**

### NEW QUESTION 10

In this exhibit, identify two settings on the Internet tab of the Component Properties dialog box that apply to fluid components. (Choose two.)



- A. In the Search Page group box: Primary Action
- B. In the Search Page group box: Instructional Text
- C. In the Pagebar group box: Help Link
- D. In the Toolbar group box: Notify
- E. In the Toolbar group box: Save
- F. In the Multi-Page Navigation group box: Display Folder Tabs (top)

**Answer: AF**

### NEW QUESTION 10

When registering fluid components, assume you usually create the content references so that they reside in the My Fluid Applications folder as shown in the exhibit.



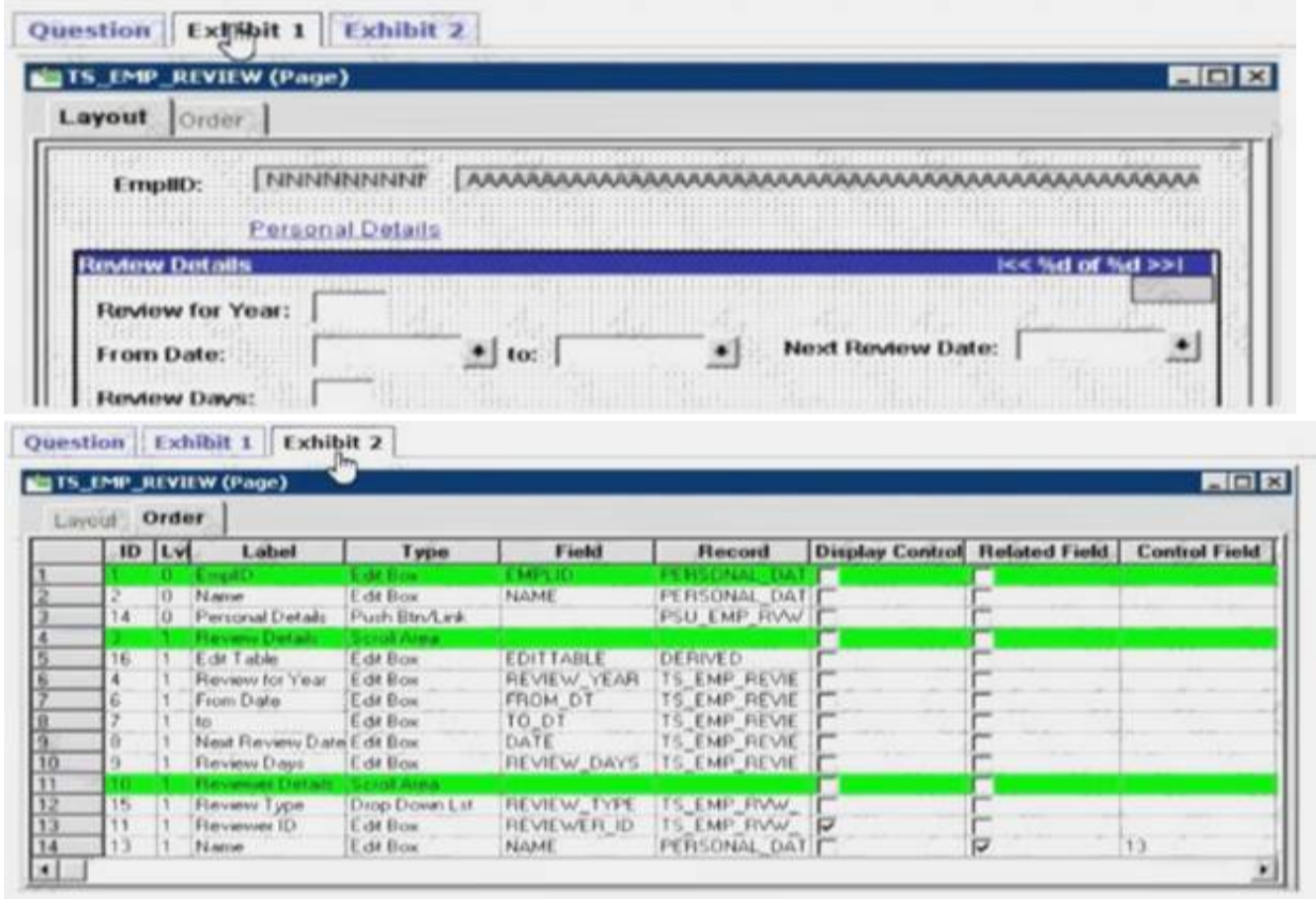
However, for your Fluid Billing component, you register the component so the content reference resides in a folder outside the Fluid Pages folder in the Billing folder (Root>Billing).  
What effect does this have on users accessing this component?

- A. A tile for this fluid component cannot be added to a fluid homepage using the Add Tile button on the Personalize Homepage page
- B. Users will not be able to add this component to their Favorites list
- C. There is no effect on the user accessing the componen
- D. The component can be accessed the same ways as any fluid component
- E. Users will not be able to access this component using a smartphone or tablet
- F. Users will not be able to navigate to the component using the NavBar, Navigator option

Answer: A

NEW QUESTION 15

View the exhibits. Based on this page layout and page order, select two true statements about this page definition.

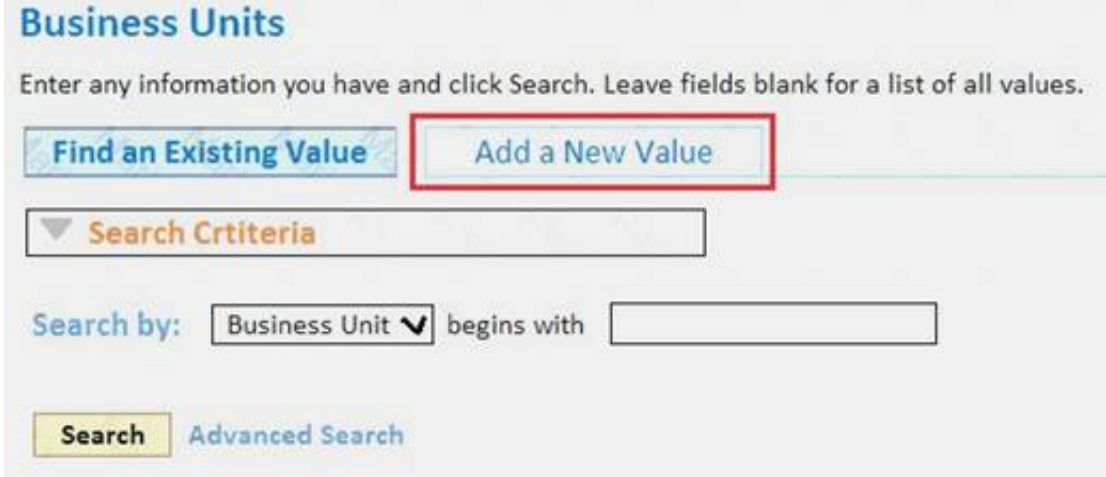


- A. The TS\_EMP\_REVIEW page is saved without error
- B. The TS\_EMP\_REVIEW page contains a parent/child design error
- C. The TS\_EMP\_REVIEW page is saved with a related field error
- D. The TS\_EMP\_REVIEW page is saved with a duplicate record field warning

Answer: A

NEW QUESTION 20

What do you need to do to display the Add a New Value search page as shown in this exhibit?



- A. Select the Add check box in the Toolbar group box on the Internet tab of the Component Properties dialog box
- B. Select a Primary Action of New in the Search Page group box on the Internet tab of the Component Properties dialog box
- C. Select a Default Search Action of Add in the Search Page group box on the Internet tab of the Component Properties dialog box
- D. Select the Add check box in the Actions group box on the Use tab of the Component Properties dialog box.
- E. Select a record from the Add search record drop-down list on the Use tab of the Component Properties dialog box

**Answer:** B

#### NEW QUESTION 25

Identify three true statements describing PeopleTools tables. (Choose three.)

- A. PeopleTools tables can be updated equally using PeopleTools, such as Application Designer, or the SQL editing tool for your database platform
- B. PeopleTools tables use the naming convention of having the prefix PD\*, as in PSRECDEFN
- C. PeopleTools tables store metadata that defines the elements of a PeopleSoft application
- D. PeopleTools tables contain the same content, regardless of the PeopleSoft application installed on the database
- E. PeopleTools tables have a consistent structure, regardless of the PeopleSoft application installed on the database
- F. PeopleTools tables are empty until the implementation team has loaded the application's transactional data

**Answer:** ABC

#### NEW QUESTION 28

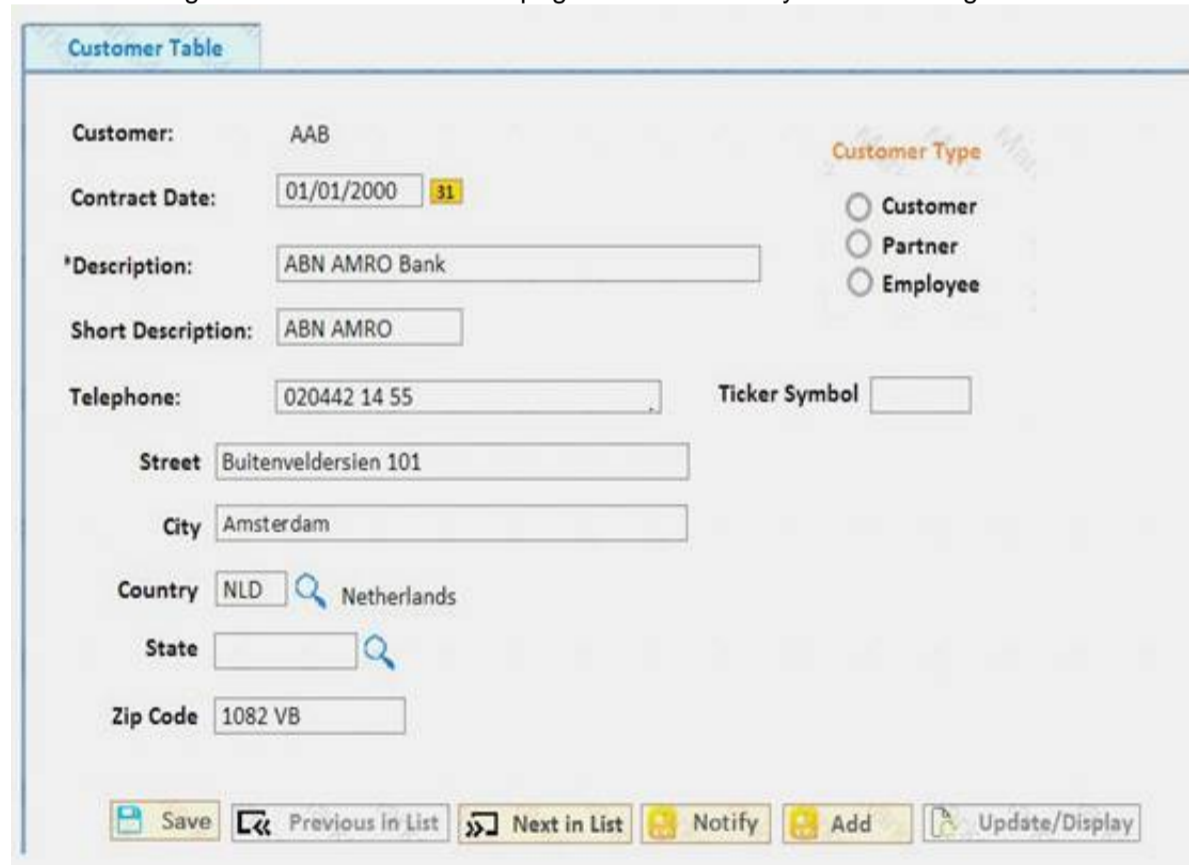
You surround a set of page controls with a group box on a fluid page. When rendered in HTML, what tag will those page controls be within?

- A. <div>
- B. <embed>
- C. <iframe>
- D. <datalist>
- E. <frame>
- F. <area>

**Answer:** E

#### NEW QUESTION 33

You are testing the new Customer Table page and notice that you are missing a Return to Search button on the page.



To add this button in Application Designer, open the Component Properties dialog box and .

- A. On the Internet tab, select Return to Search
- B. On the Internet tab, select Page Navigation in History
- C. On the Use tab, select Update/Display
- D. On the Internet tab, select Return to List
- E. On the Use tab, select Return to Search

**Answer:** D

#### NEW QUESTION 36

At what occurs level is the Reviewer Details scroll area?

Empl ID 00001Aguilar, Cornelia

Personal Details

Review DetailsFind | View allFirst1 of 3Last+ -

Review for Year 2007

Reviewer DetailsFind | View allFirst1 of 2Last+ -

Review TypeEmployee SelfAssessment

Reviewer ID 00001Aguilar, Cornelia

Review FactorsPersonalize | Find | [icon] | [icon]First1 of 1Last

*review Factor	Description	Factor Weight (%)	*Rating
1		25.0	Too new to rate

- A. 1
- B. 3
- C. 2
- D. 4

Answer: A

NEW QUESTION 40

.....

## THANKS FOR TRYING THE DEMO OF OUR PRODUCT

Visit Our Site to Purchase the Full Set of Actual 1Z0-632 Exam Questions With Answers.

We Also Provide Practice Exam Software That Simulates Real Exam Environment And Has Many Self-Assessment Features. Order the 1Z0-632 Product From:

<https://www.2passeasy.com/dumps/1Z0-632/>

## Money Back Guarantee

### 1Z0-632 Practice Exam Features:

- \* 1Z0-632 Questions and Answers Updated Frequently
- \* 1Z0-632 Practice Questions Verified by Expert Senior Certified Staff
- \* 1Z0-632 Most Realistic Questions that Guarantee you a Pass on Your FirstTry
- \* 1Z0-632 Practice Test Questions in Multiple Choice Formats and Updatesfor 1 Year