

Exam Questions 300-510

Implementing Cisco Service Provider Advanced Routing Solutions (SPRI)

<https://www.2passeasy.com/dumps/300-510/>



NEW QUESTION 1

```
RP/0/0/CPU0:XR1#show run

route-policy AGGRO
  if destination in (10.0.0.0/8 ge 8 le 25) then
    set community (10:825)
  endif
  if destination in (10.2.0.0/24) then
    drop
  endif
  if destination in (10.1.0.0/24) then
    suppress-route
  endif
end-policy
!
!
router bgp 1
  bgp router-id 192.168.0.7
  address-family ipv4 unicast
    aggregate-address 10.0.0.0/8 route-policy AGGRO
  
```

RP/0/0/CPU0:XR1#

Refer to the exhibit. A network operator is working to filter routes from being advertised that are covered under an aggregate announcement. The receiving router of the aggregate announcement block is still getting some of the more specific routes plus the aggregate. Which configuration change ensures that only the aggregate is announced now and in the future if other networks are to be added?

- A. Configure the summary-only keyword on the aggregate command
- B. Set each specific route in the AGGRO policy to drop instead of suppress-route
- C. Filter the routes on the receiving router
- D. Set each specific route in the AGGRO policy to remove instead of suppress-route

Answer: A

NEW QUESTION 2

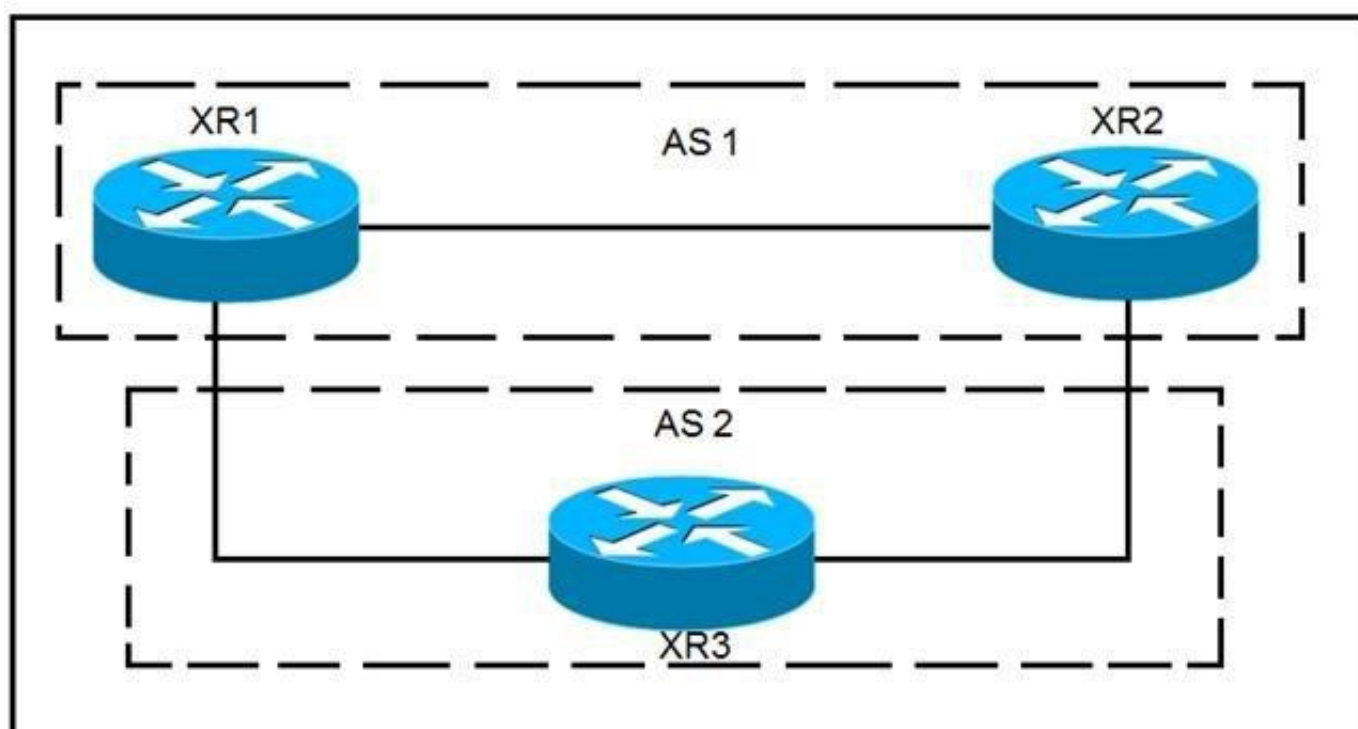
DRAG DROP

Compare different features between OSPFv2 and OSPFv3. Drag and drop the descriptions of OSPF from the left onto the correct OSPF versions on the right. Select and Place:

- A. Mastered
- B. Not Mastered

Answer: A

NEW QUESTION 3

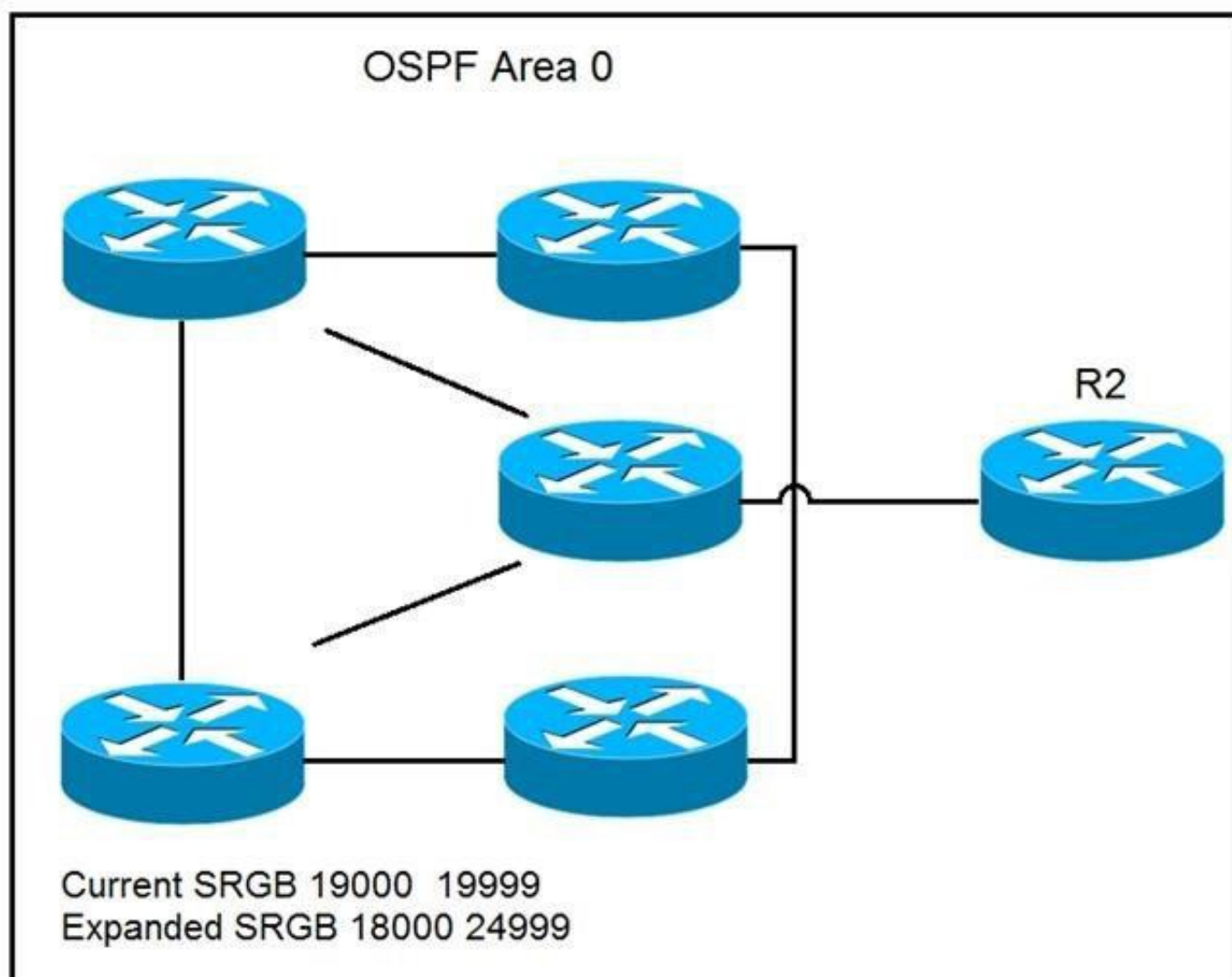


Refer to the exhibit. XR1 and XR2 are sending the prefix 10.11.11.0/24 to XR3. A configured policy on XR1 is incorrectly prepending AS path 11 11 12 12 onto this prefix. A network operator wants to add a policy onto XR3 that will not allow the falsely prepending prefix from being installed. Which policy configuration applied to the XR3 neighbor configuration for XR1 can accomplish this requirement without impact to other or future received routes?

- A. route-policy NO_PREPEND
 if as-path passes-through '11' then
 pass
 else
 drop
 endif
 end-policy
- B. route-policy NO_PREPEND
 if as-path prepends
 drop
 else
 pass
 endif
 end-policy
- C. route-policy NO_PREPEND
 if as-path passes-through '1' then
 pass
 else
 drop
 endif
 end-policy
- C. route-policy NO_PREPEND
 if as-path passes-through '11' then
 drop
 else
 pass
 endif
 end-policy

Answer: D

NEW QUESTION 4



Refer to the exhibit. A network operator wants to expand the segment routing global block in upcoming maintenance. The operator must ensure that the changes to the segment routing global block have no adverse impacts on the prefix-sid associated with the loopback0 interface used within the OSPF domain. Which command can the operator use to enforce R2 to have a strict prefix-sid assignment to loopback0? A.

- A. A. router ospf 1
 area 0
 interface Loopback0
 prefix-sid index 19002 explicit-null
- B. router ospf 1
 area 0
 interface Loopback0
 prefix-sid absolute 13002
- B. router ospf 1
 area 0
 interface Loopback0
 prefix-sid absolute 19002
- C. router ospf 1
 area 0
 interface Loopback0
 prefix-sid index 19002

Answer: C

NEW QUESTION 5

| | | | | |
|--|------------|-----|---------------|----------|
| R1#sh ip int bri | | | | |
| Interface | IP-Address | OK? | Method Status | Protocol |
| FastEthernet0/0 | 10.1.12.1 | YES | manual up | up |
| FastEthernet0/1 | 10.1.13.1 | YES | manual up | up |
| R1#sh run s router bgp | | | | |
| ! | | | | |
| router bgp 123 | | | | |
| bgp log-neighbor-changes | | | | |
| neighbor TEST peer-group | | | | |
| neighbor TEST remote-as 2 alternate-as 3 | | | | |
| neighbor 10.1.12.2 peer-group TEST | | | | |
| neighbor 10.1.13.3 peer-group TEST | | | | |
| R2#sh ip int bri | | | | |
| Interface | IP-Address | OK? | Method Status | Protocol |
| FastEthernet0/0 | 10.1.12.2 | YES | manual up | up |
| R2#sh run s router bgp | | | | |
| ! | | | | |
| router bgp 2 | | | | |
| bgp log-neighbor-changes | | | | |
| neighbor 10.1.12.1 remote-as 123 | | | | |
| R3#sh ip int bri | | | | |
| Interface | IP-Address | OK? | Method Status | Protocol |
| FastEthernet0/1 | 10.1.13.3 | YES | manual up | up |
| R3#sh run s router bgp | | | | |
| router bgp 3 | | | | |
| bgp log-neighbor-changes | | | | |
| neighbor 10.1.13.1 remote-as 123 | | | | |

Refer to the exhibit. R1 is directly connected to R2 and R3. R1 is in BGP AS 123, R2 is in BGP AS 2, and R3 is in BGP AS 3. Assume that there is no connectivity issue between R1, R2 and R1, R3. Which result between BGP peers R1, R2 and R1, R3 is true?

- A. The BGP session does not come up between R1 and R2 and between R1 and R3.
- B. The BGP session comes up between R1 and R2 and between R1 and R3.
- C. The BGP session comes up between R1 and R3, but not between R1 and R2.
- D. The BGP session comes up between R1 and R2, but not between R1 and R3.

Answer: B

NEW QUESTION 6


```
"PE#show ip msdp peer
MSDP Peer 10.10.10.10 (?), AS ?
  Connection status:
    State: Listen, Resets: 0, Connection source: none configured
    Uptime (Downtime): 00:00:07, Messages sent/received: 0/0
    Output messages discarded: 0
    Connection and counters cleared 00:00:7 ago
  SA Filtering:
    Input (S, G) filter: none, route-map: none
    Input RP filter: none, route-map: none
    Output (S, G) filter: none, route-map: none
    Output RP filter: none, route-map: none
  SA-Requests:
    Input filter: none
  Peer ttl threshold: 0
  SAs learned from this peer: 0
  Input queue size: 0, Output queue size: 0"
```

Refer to the exhibit. A service provider technician is working on a multicast issue for a customer. While checking the multicast table, the technician notices that no flags are present for the (1.1.1.1, 239.1.1.1) entry, yet flags are present for the (1.1.1.1, 232.1.1.1) entry. Which factor might explain this issue?

- A. Only the administratively scoped range is permitted
- B. Only ASM is permitted
- C. Only the default SSM range is permitted
- D. Only GLOP is permitted

Answer: C

NEW QUESTION 7

You have configured routing policies on a Cisco IOS XR device with routing policy language. Which two statements about the routing policies are true? (Choose two.)

- A. The routing policies affect BGP-related routes only.
- B. If you make edits to an existing routing policy without pasting the full policy into the CLI, the previous policy is overwritten.
- C. You can change an existing routing policy by editing individual statements.
- D. The routing policies are implemented in a sequential manner.
- E. The routing policies are implemented using route maps.

Answer: CD

NEW QUESTION 8

```
Router 1:

router bgp 65530
  address-family ipv4 unicast
    bgp additional-paths select all
  neighbor 192.168.1.1 additional-paths send
  neighbor 192.168.1.1 advertise additional-paths all
```

Refer to the exhibit. Which statement about this configuration is true?

- A. Router 1 sends and receives multiple best paths from neighbor 192.168.1.1
- B. Router 1 sends up to two paths to neighbor 192.168.1.1 for all routes
- C. Router 1 receives up to two paths from neighbor 192.168.1.1 for all routes in the same AS
- D. Router 1 receives only the best path from neighbor 192.168.1.1

Answer: A

NEW QUESTION 9

Which cost is the default when redistributing routes from BGP to OSPF?

- A. 20
- B. 1
- C. infinite
- D. automatic

Answer: B

NEW QUESTION 10

Refer to the exhibit. CE1 and CE2 cannot communicate through the service provider BGP peering is established between PE1 and PE2. IS-IS is the only routing protocol running in the service provider core. What step can be done to troubleshoot the issue?

- A. Switch the IGPs running in the core from IS-IS to OSPF to support a Cisco MPLS TE tunnel from PE1 to PE2.
- B. Configure BGP between CE and PE routers.
- C. Confirm that IS-IS is running with metric-style narrow.
- D. Verify the MPLS LSPs.

Answer: C

NEW QUESTION 10

Refer to the exhibit. Routers R1 and R2 cannot form a neighbor relationship, but the network is otherwise configured correctly and operating normally. Which two statements describe the problem? (Choose two.)

- A. The two routers are in the same area
- B. The two routers are in different subnets
- C. The two routers have password mismatch issues
- D. The two routers have the same network ID
- E. The two routers are in different areas

Answer: BE

NEW QUESTION 14

In a PIM-SM environment, which mechanism determines the traffic that a receiver receives?

- A. The receiver explicitly requests its desired traffic from the RP on the shared tree.
- B. The receiver explicitly requests traffic from a single source, which responds by forwarding all traffic.
- C. The RP on the shared tree floods traffic out of all PIM configured interfaces.
- D. The receiver explicitly requests traffic from each desired source, which responds by sending all traffic.

Answer: D

NEW QUESTION 17

Which statement about BFD on Cisco IOS XR Software is true?

- A. Cisco IOS XR router must use LDP to route back to the Cisco IOS router to establish the peer relationship.
- B. Cisco IOS XR Software does not support BFD multihop for IPv4.
- C. Cisco IOS XR router must use dynamic routing or a static route back to the Cisco IOS router to establish the peer relationship.
- D. BFD is not compatible between Cisco IOS XR and Cisco IOS Software.

Answer: C

NEW QUESTION 20

```
RP/0/0/CPU0:iosxr# show run segment-routing

segment-routing
  global-block 18000 24999
!

RP/0/0/CPU0:iosxr#
```

Refer to the exhibit. A network engineer implemented this segment routing configuration. Which statement about the output is true?

- A. This range conflicts with the segment routing local block range.
- B. The device must be reloaded for these ranges to be allocated and used.
- C. The default segment routing global block range is being used on this device.
- D. A nondefault segment routing global block range is being used on this device.

Answer: D

NEW QUESTION 21

.....

THANKS FOR TRYING THE DEMO OF OUR PRODUCT

Visit Our Site to Purchase the Full Set of Actual 300-510 Exam Questions With Answers.

We Also Provide Practice Exam Software That Simulates Real Exam Environment And Has Many Self-Assessment Features. Order the 300-510 Product From:

<https://www.2passeasy.com/dumps/300-510/>

Money Back Guarantee

300-510 Practice Exam Features:

- * 300-510 Questions and Answers Updated Frequently
- * 300-510 Practice Questions Verified by Expert Senior Certified Staff
- * 300-510 Most Realistic Questions that Guarantee you a Pass on Your FirstTry
- * 300-510 Practice Test Questions in Multiple Choice Formats and Updatesfor 1 Year