

az-500 Dumps

Microsoft Azure Security Technologies

<https://www.certleader.com/az-500-dumps.html>



NEW QUESTION 1

You need to ensure that User2 can implement PIM.
What should you do first?

- A. Assign User2 the Global administrator role.
- B. Configure authentication methods for contoso.com.
- C. Configure the identity secure score for contoso.com.
- D. Enable multi-factor authentication (MFA) for User2.

Answer: A

Explanation:

To start using PIM in your directory, you must first enable PIM.

1. Sign in to the Azure portal as a Global Administrator of your directory.

You must be a Global Administrator with an organizational account (for example, @yourdomain.com), not a Microsoft account (for example, @outlook.com), to enable PIM for a directory.

Scenario: Technical requirements include: Enable Azure AD Privileged Identity Management (PIM) for contoso.com References:

<https://docs.microsoft.com/bs-latn-ba/azure/active-directory/privileged-identity-management/pim-getting-started>

NEW QUESTION 2

HOTSPOT

You have an Azure Active Directory (Azure AD) tenant named contoso.com that contains the users shown in the following table.

Name	Member of	Mobile phone	Multi-factor authentication (MFA) status
User1	Group1	123 555 7890	Disabled
User2	Group1, Group2	None	Enabled
User3	Group1	123 555 7891	Required

You create and enforce an Azure AD Identity Protection user risk policy that has the following settings:

▪ Assignment: Include Group1, Exclude Group2 Conditions: Sign-in risk of Medium and above Access: Allow access, Require password change

For each of the following statements, select Yes if the statement is true. Otherwise, select No.

NOTE: Each correct selection is worth one point.

Hot Area:

Answer Area

Statements	Yes	No
If User1 signs in from an unfamiliar location, he must change his password.	<input type="radio"/>	<input type="radio"/>
If User2 signs in from an anonymous IP address, she must change her password.	<input type="radio"/>	<input type="radio"/>
If User3 signs in from a computer containing malware that is communicating with known bot servers, he must change his password.	<input type="radio"/>	<input type="radio"/>

- A. Mastered
- B. Not Mastered

Answer: A

Explanation:

Box 1: Yes

User1 is member of Group1. Sign in from unfamiliar location is risk level Medium.

Box 2: Yes

User2 is member of Group1. Sign in from anonymous IP address is risk level Medium.

Box 3: No

Sign-ins from IP addresses with suspicious activity is low.

Note:

Sign-in Activity	Risk Level
Users with leaked credentials	High
Sign-ins from anonymous IP addresses	Medium
Impossible travel to atypical locations	Medium
Sign-ins from infected devices	Medium
Sign-ins from IP addresses with suspicious activity	Low
Sign-ins from unfamiliar locations	Medium

- Azure AD Identity protection can detect six types of suspicious sign-in activities: Users with leaked credentials
- Sign-ins from anonymous IP addresses Impossible travel to atypical locations Sign-ins from infected devices
- Sign-ins from IP addresses with suspicious activity Sign-ins from unfamiliar locations

These six types of events are categorized in to 3 levels of risks – High, Medium & Low: References:

<http://www.rebeladmin.com/2018/09/step-step-guide-configure-risk-based-azure-conditional-access-policies/>

NEW QUESTION 3

HOTSPOT

You have an Azure Container Registry named Registry1.

You add role assignment for Registry1 as shown in the following table.

User	Role
User1	AcrPush
User2	AcrPull
User3	AcrImageSigner
User4	Contributor

Which users can upload images to Registry1 and download images from Registry1? To answer, select the appropriate options in the answer area.

NOTE: Each correct selection is worth one point.

Hot Area:

Answer Area

Upload images:

▼

User1 only
User1 and User4 only
User1, User3, and User4
User1, User2, User3, and User4

Download images:

▼

User2 only
User1 and User2 only
User2 ad User4 only
User1, User2, and User4
User1, User2, User3, and User4

- A. Mastered
B. Not Mastered

Answer: A

Explanation:

Box 1: User1 and User4 only

Owner, Contributor and AcrPush can push images.

Box 2: User1, User2, and User4

All, except AcrImageSigner, can download/pull images.

Role/Permission	Access Resource Manager	Create/delete registry	Push image	Pull image	Delete image data	Change policies	Sign images
Owner	X	X	X	X	X	X	
Contributor	X	X	X	X	X	X	
Reader	X			X			
AcrPush			X	X			
AcrPull				X			
AcrDelete					X		
AcrImageSigner							X

References:

<https://docs.microsoft.com/bs-latn-ba/azure/container-registry/container-registry-roles>

NEW QUESTION 4

HOTSPOT

What is the membership of Group1 and Group2? To answer, select the appropriate options in the answer area.

NOTE: Each correct selection is worth one point.

Hot Area:

Answer Area

Group1:

No members
Only User2
Only User2 and User4
User1, User2, User3, and User4

Group2:

No members
Only User3
Only User1 and User3
User1, User2, User3, and User4

- A. Mastered
- B. Not Mastered

Answer: A

Explanation:

Box 1: User1, User2, User3, User4

Contains "ON" is true for Montreal (User1), MONTREAL (User2), London (User 3), and Ontario (User4) as string and regex operations are not case sensitive.

Box 2: Only User3

Match "*on" is only true for London (User3).

Scenario:

Contoso.com contains the users shown in the following table.

Name	City	Role
User1	Montreal	Global administrator
User2	MONTREAL	Security administrator
User3	London	Privileged role administrator
User4	Ontario	Application administrator
User5	Seattle	Cloud application administrator
User6	Seattle	User administrator
User7	Sydney	Reports reader
User8	Sydney	None

Contoso.com contains the security groups shown in the following table.

Name	Membership type	Dynamic membership rule
Group1	Dynamic user	user.city -contains "ON"
Group2	Dynamic user	user.city -match "*on"

References:

<https://docs.microsoft.com/en-us/azure/active-directory/users-groups-roles/groups-dynamic-membership>

NEW QUESTION 5

HOTSPOT

You are evaluating the security of the network communication between the virtual machines in Sub2. For each of the following statements, select Yes if the statement is true. Otherwise, select No. NOTE: Each correct selection is worth one point.

Hot Area:

Answer Area

Statements	Yes	No
From VM1, you can successfully ping the public IP address of VM2.	<input type="radio"/>	<input type="radio"/>
From VM1, you can successfully ping the private IP address of VM3.	<input type="radio"/>	<input type="radio"/>
From VM1, you can successfully ping the public IP address of VM5.	<input type="radio"/>	<input type="radio"/>

- A. Mastered
- B. Not Mastered

Answer: A

Explanation:

Box 1: Yes

NSG1 has the inbound security rules shown in the following table.

Priority	Port	Protocol	Source	Destination	Action
65000	Any	Any	VirtualNetwork	VirtualNetwork	Allow
65001	Any	Any	AzureLoadBalancer	Any	Allow
65500	Any	Any	Any	Any	Deny

NSG2 has the inbound security rules shown in the following table.

Priority	Port	Protocol	Source	Destination	Action
100	80	TCP	Internet	VirtualNetwork	Allow
65000	Any	Any	VirtualNetwork	VirtualNetwork	Allow
65001	Any	Any	AzureLoadBalancer	Any	Allow
65500	Any	Any	Any	Any	Deny

Box 2: Yes

Box 3: No Note:

Sub2 contains the virtual machines shown in the following table.

Name	Network interface	Application security group	Connected to
VM1	NIC1	ASG1	Subnet1.1
VM2	NIC2	ASG2	Subnet1.1
VM3	NIC3	None	Subnet1.2
VM4	NIC4	ASG1	Subnet1.3
VM5	NIC5	None	Subnet2.1

Name	Subnet
VNetwork1	Subnet1.1, Subnet1.2 and Subent1.3
VNetwork2	Subnet2.1

Sub2 contains the network security groups (NSGs) shown in the following table.

Name	Associated to
NSG1	NIC2
NSG2	Subnet1.1
NSG3	Subnet1.3
NSG4	Subnet2.1

Question Set 3

NEW QUESTION 6

You have an Azure subscription named Sub1. Sub1 contains a virtual network named VNet1 that contains one subnet named Subnet1.

You create a service endpoint for Subnet1.

Subnet1 contains an Azure virtual machine named VM1 that runs Ubuntu Server 18.04.

You need to deploy Docker containers to VM1. The containers must be able to access Azure Storage resources and Azure SQL databases by using the service endpoint.

A. Create an application security group and a network security group (NSG).

B. Edit the docker-compose.yml file.

C. Install the container network interface (CNI) plug-in.

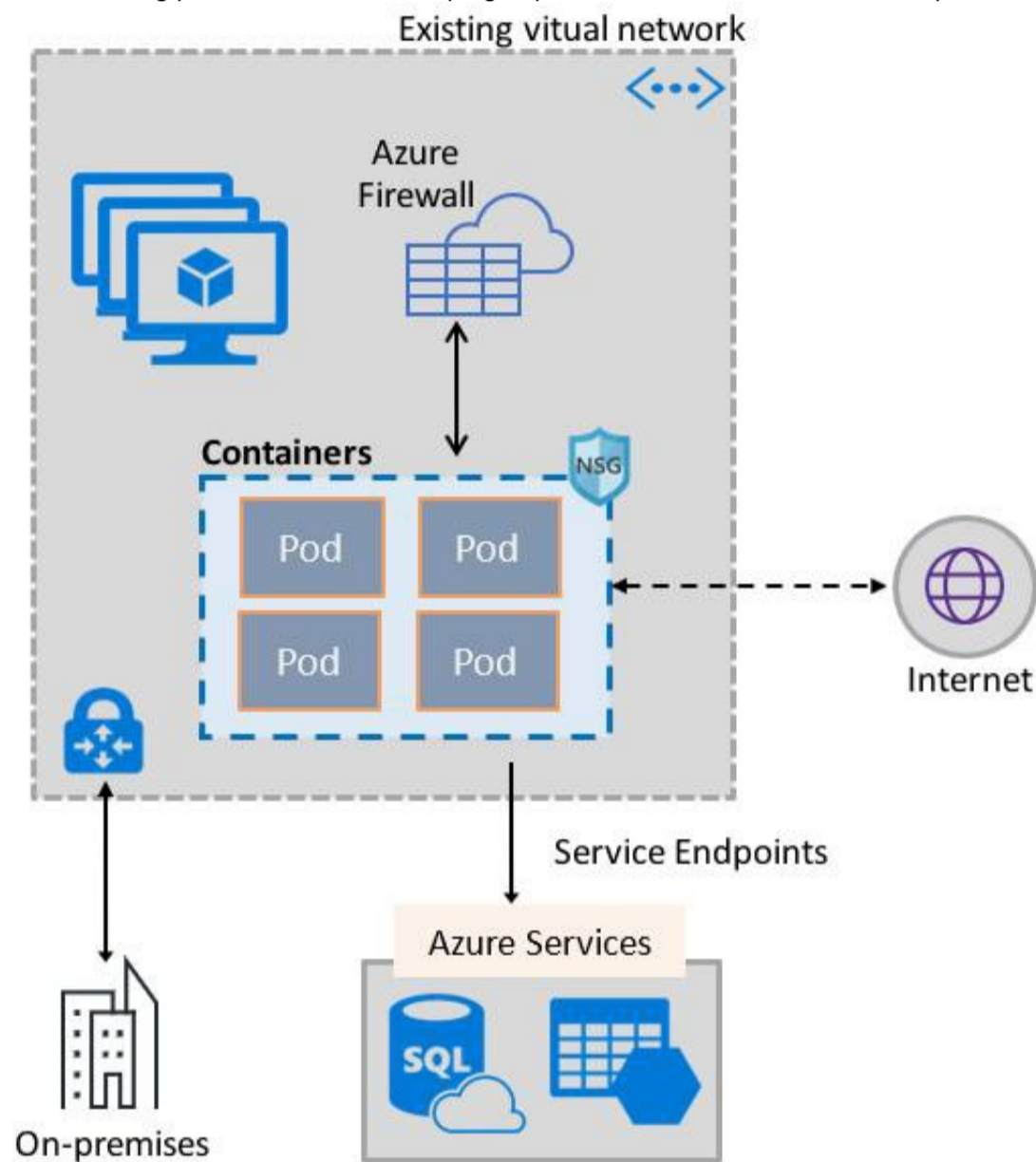
Answer: C

Explanation:

The Azure Virtual Network container network interface (CNI) plug-in installs in an Azure Virtual Machine. The plug-in supports both Linux and Windows platform.

The plug-in assigns IP addresses from a virtual network to containers brought up in the virtual machine, attaching them to the virtual network, and connecting them directly to other containers and virtual network resources. The plug-in doesn't rely on overlay networks, or routes, for connectivity, and provides the same performance as virtual machines.

The following picture shows how the plug-in provides Azure Virtual Network capabilities to Pods:



References:

<https://docs.microsoft.com/en-us/azure/virtual-network/container-networking-overview>

NEW QUESTION 7

HOTSPOT

You plan to use Azure Log Analytics to collect logs from 200 servers that run Windows Server 2016.

You need to automate the deployment of the Microsoft Monitoring Agent to all the servers by using an Azure Resource Manager template. How should you complete the template? To answer, select the appropriate options in the answer area.

NOTE: Each correct selection is worth one point.

Hot Area:

Answer Area

```
{
  "type": "Microsoft.Compute/virtualMachines/extensions",
  "name": "[concat(parameter('vmname'), /OMSExtension)]",
  "apiVersion": "[variables('apiVersion')]",
  "location": "[resourceGroup().location]",
  "dependsOn": [
    "[concat('Microsoft.Compute/virtualMachines/', parameters('vmName'))]"
  ],
  "properties": {
    "publisher": "Microsoft.EnterpriseCloud.Monitoring",
    "type": "MicrosoftMonitoringAgent",
    "typeHandlerVersion": "1.0",
    "autoUpgradeMinorVersion": true,
    "settings": {
      "[variable('var1')]"
      "AzureADApplicationID"
      "WorkspaceID"
      "WorkspaceName"
      "WorkspaceURL"
    },
    "protectedSettings": {
      "[variable('var2')]"
      "AzureADApplicationSecret"
      "StorageAccountKey"
      "WorkspaceID"
      "WorkspaceKey"
    }
  }
}
```

- A. Mastered
B. Not Mastered

Answer: A

Explanation:

Answer Area

```
{
  "type": "Microsoft.Compute/virtualMachines/extensions",
  "name": "[concat(parameter('vmname'), /OMSExtension)]",
  "apiVersion": "[variables('apiVersion')]",
  "location": "[resourceGroup().location]",
  "dependsOn": [
    "[concat('Microsoft.Compute/virtualMachines/', parameters('vmName'))]"
  ],
  "properties": {
    "publisher": "Microsoft.EnterpriseCloud.Monitoring",
    "type": "MicrosoftMonitoringAgent",
    "typeHandlerVersion": "1.0",
    "autoUpgradeMinorVersion": true,
    "settings": {
      "[variable('var1')]"
      "AzureADApplicationID"
      "WorkspaceID"
      "WorkspaceName"
      "WorkspaceURL"
    },
    "protectedSettings": {
      "[variable('var2')]"
      "AzureADApplicationSecret"
      "StorageAccountKey"
      "WorkspaceID"
      "WorkspaceKey"
    }
  }
}
```

References:

<https://blogs.technet.microsoft.com/manageabilityguys/2015/11/19/enabling-the-microsoft-monitoring-agent-in-windows-json-templates/>

NEW QUESTION 8

You have an Azure subscription named Sub1 that is associated to an Azure Active Directory (Azure AD) tenant named contoso.com. You are assigned the Global administrator role for the tenant. You are responsible for managing Azure Security Center settings. You need to create a custom sensitivity label. What should you do first?

- A. Create a custom sensitive information type.
B. Elevate access for global administrators in Azure AD.
C. Upgrade the pricing tier of the Security Center to Standard.
D. Enable integration with Microsoft Cloud App Security.

Answer: A

Explanation:

First, you need to create a new sensitive information type because you can't directly modify the default rules.
References:
<https://docs.microsoft.com/en-us/office365/securitycompliance/customize-a-built-in-sensitive-information-type>

NEW QUESTION 9

You create a new Azure subscription.

You need to ensure that you can create custom alert rules in Azure Security Center. Which two actions should you perform? Each correct answer presents part of the solution. NOTE: Each correct selection is worth one point.

- A. Onboard Azure Active Directory (Azure AD) Identity Protection.
- B. Create an Azure Storage account.
- C. Implement Azure Advisor recommendations.
- D. Create an Azure Log Analytics workspace.
- E. Upgrade the pricing tier of Security Center to Standard.

Answer: BD

Explanation:

D: You need write permission in the workspace that you select to store your custom alert.

References:

<https://docs.microsoft.com/en-us/azure/security-center/security-center-custom-alert>

NEW QUESTION 10

DRAG DROP

You have an Azure subscription that contains 100 virtual machines. Azure Diagnostics is enabled on all the virtual machines. You are planning the monitoring of Azure services in the subscription.

You need to retrieve the following details:

- _ Identify the user who deleted a virtual machine three weeks ago.
- _ Query the security events of a virtual machine that runs Windows Server 2016.

What should you use in Azure Monitor? To answer, drag the appropriate configuration settings to the correct details. Each configuration setting may be used once, more than once, or not at all. You may need to drag the split bar between panes or scroll to view content.

NOTE: Each correct selection is worth one point.

Select and Place:

Settings	Answer Area
Activity log	
Logs	Identify the user who deleted a virtual machine three weeks ago: <input type="text"/>
Metrics	Query the security events of a virtual machine that runs Windows Server 2016: <input type="text"/>
Service Health	

- A. Mastered
- B. Not Mastered

Answer: A

Explanation:

Box1: Activity log

Azure activity logs provide insight into the operations that were performed on resources in your subscription. Activity logs were previously known as “audit logs” or “operational logs,” because they report control-plane events for your subscriptions.

Activity logs help you determine the “what, who, and when” for write operations (that is, PUT, POST, or DELETE). Box 2: Logs

Log Integration collects Azure diagnostics from your Windows virtual machines, Azure activity logs, Azure Security Center alerts, and Azure resource provider logs. This integration provides a unified dashboard for all your assets, whether they're on-premises or in the cloud, so that you can aggregate, correlate, analyze, and alert for security events.

References:

<https://docs.microsoft.com/en-us/azure/security/azure-log-audit>

Testlet 1

This is a case study. Case studies are not timed separately. You can use as much exam time as you would like to complete each case. However, there may be additional case studies and sections on this exam. You must manage your time to ensure that you are able to complete all questions included on this exam in the time provided.

To answer the questions included in a case study, you will need to reference information that is provided in the case study. Case studies might contain exhibits and other resources that provide more information about the scenario that is described in the case study. Each question is independent of the other question on this case study.

At the end of this case study, a review screen will appear. This screen allows you to review your answers and to make changes before you move to the next sections of the exam. After you begin a new section, you cannot return to this section.

To start the case study

To display the first question on this case study, click the Next button. Use the buttons in the left pane to explore the content of the case study before you answer the questions. Clicking these buttons displays information such as business requirements, existing environment, and problem statements. If the case study has an All Information tab, note that the information displayed is identical to the information displayed on the subsequent tabs. When you are ready to answer a question, click the Question button to return to the question.

Overview

Litware, Inc. is a digital media company that has 500 employees in the Chicago area and 20 employees in the San Francisco area.

Existing Environment

Litware has an Azure subscription named Sub1 that has a subscription ID of 43894a43-17c2-4a39-8cfc-3540c2653ef4.

Sub1 is associated to an Azure Active Directory (Azure AD) tenant named litwareinc.com. The tenant contains the user objects and the device objects of all the

Litware employees and their devices. Each user is assigned an Azure AD Premium P2 license. Azure AD Privileged Identity Management (PIM) is activated. The tenant contains the groups shown in the following table.

Name	Type	Description
Group1	Security group	A group that has the Dynamic User membership type, contains all the San Francisco users, and provides access to many Azure AD applications and Azure resources.
Group2	Security group	A group that has the Dynamic User membership type and contains the Chicago IT team

The Azure subscription contains the objects shown in the following table.

Name	Type	Description
VNet1	Virtual network	VNet1 is a virtual network that contains security-sensitive IT resources. VNet1 contains three subnets named Subnet0, Subnet1, and AzureFirewallSubnet.
VM0	Virtual machine	VM0 is an Azure virtual machine that runs Windows Server 2016, connects to Subnet0, and has just in time (JIT) VM access configured.
VM1	Virtual machine	VM1 is an Azure virtual machine that runs Windows Server 2016 and connects to Subnet0.
SQLDB1	Azure SQL Database	SQLDB1 is an Azure SQL database on a SQL Database server named LitwareSQLServer1.
WebApp1	Web app	WebApp1 is an Azure web app that is accessible by using https://litwareinc.com and http://www.litwareinc.com .
Resource Group1	Resource group	Resource Group1 is a resource group that contains VNet1, VM0, and VM1.
Resource Group2	Resource group	Resource Group2 is a resource group that contains shared IT resources.

Azure Security Center is set to the Free tier.

Planned changes

Litware plans to deploy the Azure resources shown in the following table.

Name	Type	Description
Firewall1	Azure Firewall	An Azure firewall on VNet1.
RT1	Route table	A route table that will contain a route pointing to Firewall1 as the default gateway and will be assigned to Subnet0.
AKS1	Azure Kubernetes Service (AKS)	A managed AKS cluster

Litware identifies the following identity and access requirements:

- _ All San Francisco users and their devices must be members of Group1.
- _ The members of Group2 must be assigned the Contributor role to Resource Group2 by using a permanent eligible assignment.
- _ Users must be prevented from registering applications in Azure AD and from consenting to applications that access company information on the users' behalf.

Platform Protection Requirements

Litware identifies the following platform protection requirements:

- _ Microsoft Antimalware must be installed on the virtual machines in Resource Group1.
- _ The members of Group2 must be assigned the Azure Kubernetes Service Cluster Admin Role. Azure AD users must be able to authenticate to AKS1 by using their Azure AD credentials.
- _ Following the implementation of the planned changes, the IT team must be able to connect to VM0 by using JIT VM access.
- _ A new custom RBAC role named Role1 must be used to delegate the administration of the managed disks in Resource Group1. Role1 must be available only for Resource Group1.

Security Operations Requirements

Litware must be able to customize the operating system security configurations in Azure Security Center.

NEW QUESTION 10

You have a hybrid configuration of Azure Active Directory (Azure AD).

All users have computers that run Windows 10 and are hybrid Azure AD joined.

You have an Azure SQL database that is configured to support Azure AD authentication.

Database developers must connect to the SQL database by using Microsoft SQL Server Management Studio (SSMS) and authenticate by using their on-premises Active Directory account.

You need to tell the developers which authentication method to use to connect to the SQL database from SSMS. The solution must minimize authentication prompts.

Which authentication method should you instruct the developers to use?

- A. SQL Login
- B. Active Directory – Universal with MFA support
- C. Active Directory – Integrated
- D. Active Directory – Password

Answer: C

Explanation:

Azure AD can be the initial Azure AD managed domain. Azure AD can also be an on-premises Active Directory Domain Services that is federated with the Azure AD.

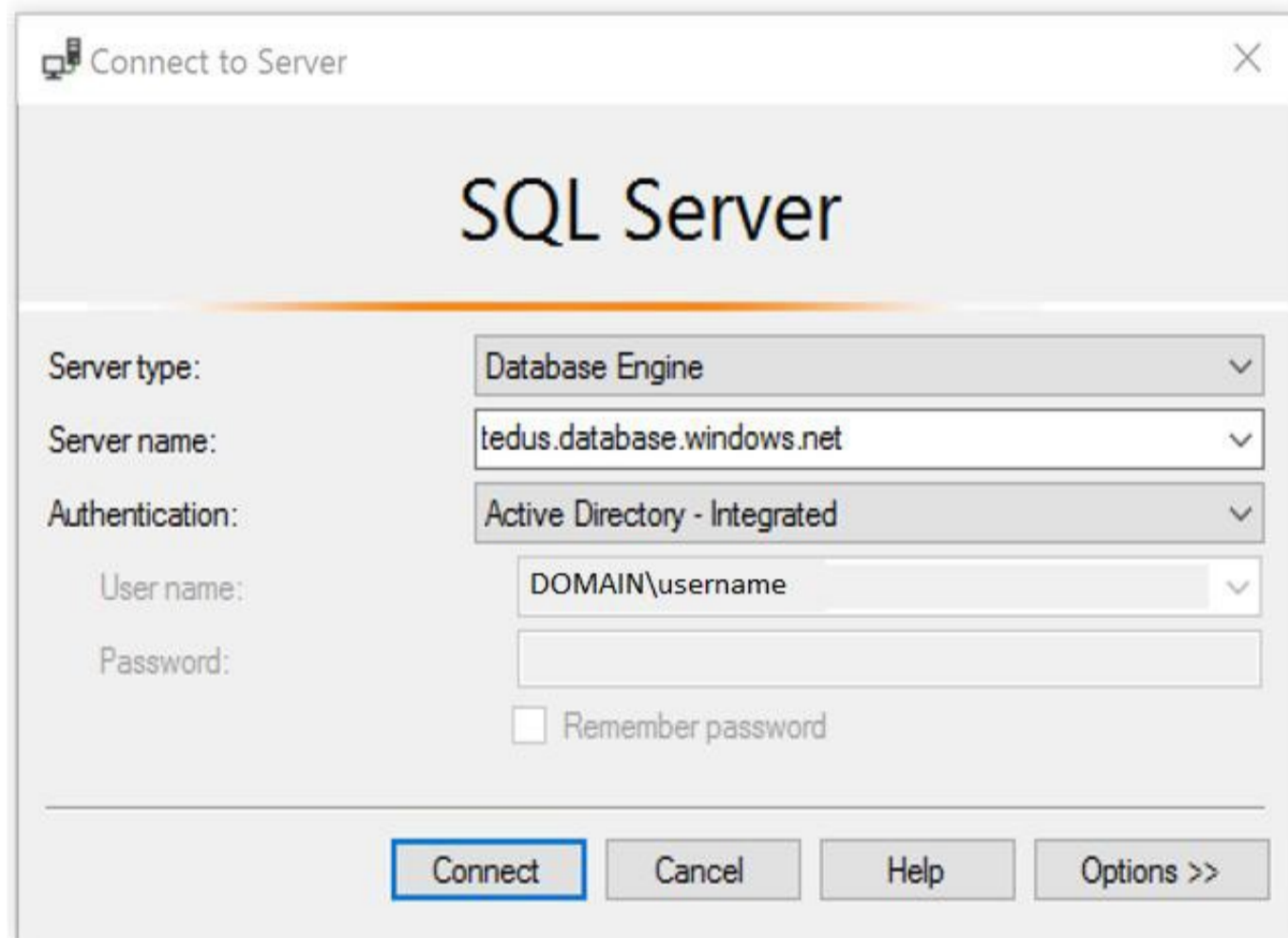
Using an Azure AD identity to connect using SSMS or SSDT

The following procedures show you how to connect to a SQL database with an Azure AD identity using SQL Server Management Studio or SQL Server Database Tools.

Active Directory integrated authentication

Use this method if you are logged in to Windows using your Azure Active Directory credentials from a federated domain.

1. Start Management Studio or Data Tools and in the Connect to Server (or Connect to Database Engine) dialog box, in the Authentication box, select Active Directory - Integrated. No password is needed or can be entered because your existing credentials will be presented for the connection.



2. Select the Options button, and on the Connection Properties page, in the Connect to database box, type the name of the user database you want to connect to. (The AD domain name or tenant ID” option is only supported for Universal with MFA connection options, otherwise it is greyed out.)

References:

<https://github.com/MicrosoftDocs/azure-docs/blob/master/articles/sql-database/sql-database-aad-authentication-configure.md>

NEW QUESTION 13

You have an Azure SQL Database server named SQL1.

You plan to turn on Advanced Threat Protection for SQL1 to detect all threat detection types. Which action will Advanced Threat Protection detect as a threat?

- A. A user updates more than 50 percent of the records in a table.
- B. A user attempts to sign as select * from table1.
- C. A user is added to the db_owner database role.
- D. A user deletes more than 100 records from the same table.

Answer: B

Explanation:

Advanced Threat Protection can detect potential SQL injections: This alert is triggered when an active exploit happens against an identified application vulnerability to SQL injection. This means the attacker is trying to inject malicious SQL statements using the vulnerable application code or stored procedures.

References:

<https://docs.microsoft.com/en-us/azure/sql-database/sql-database-threat-detection-overview>

NEW QUESTION 15

Your company uses Azure DevOps.

You need to recommend a method to validate whether the code meets the company’s quality standards and code review standards. What should you recommend implementing in Azure DevOps?

- A. branch folders
- B. branch permissions
- C. branch policies
- D. branch locking

Answer: C

Explanation:

Branch policies help teams protect their important branches of development. Policies enforce your team's code quality and change management standards.

References:

<https://docs.microsoft.com/en-us/azure/devops/repos/git/branch-policies?view=azure-devops&viewFallbackFrom=vsts>

NEW QUESTION 19

.....

Thank You for Trying Our Product

* 100% Pass or Money Back

All our products come with a 90-day Money Back Guarantee.

* One year free update

You can enjoy free update one year. 24x7 online support.

* Trusted by Millions

We currently serve more than 30,000,000 customers.

* Shop Securely

All transactions are protected by VeriSign!

100% Pass Your az-500 Exam with Our Prep Materials Via below:

<https://www.certleader.com/az-500-dumps.html>