



**Microsoft**

**Exam Questions PL-900**

Microsoft Power Platform Fundamentals

### NEW QUESTION 1

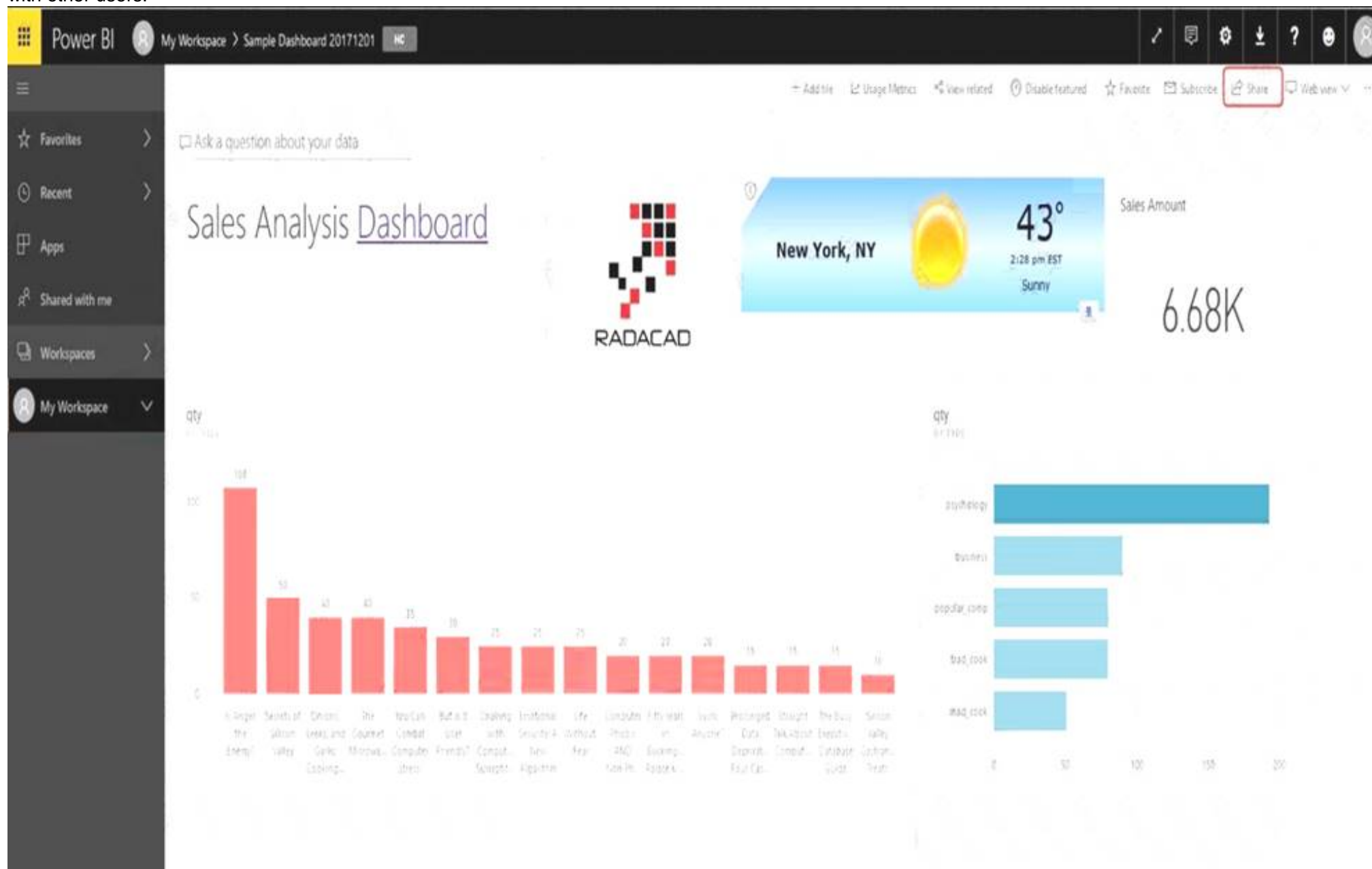
You create a Power BI dashboard that displays data from Dynamics 365 Customer Engagement. You need to share the Power BI dashboard with coworkers. What are three possible ways to achieve the goal? Each correct answer presents a complete solution.  
 NOTE: Each correct selection is worth one point.

- A. Create a Power BI workspace and grant coworkers permissions.
- B. Publish the dashboard as an app to your coworkers.
- C. Export the data into Common Data Service for others to manipulate in Power BI.
- D. Export the data to Microsoft Excel for coworkers to import and view in Power BI.
- E. Embed reports in your company's internal web portal.

**Answer:** ABE

#### Explanation:

A: Basic Sharing for Dashboards and Reports through a workspace is the most common way of sharing the Power BI content. Basic Sharing is very simple and easy to use method. You can simply click on the Share button in the dashboard or report, and then share it with other users.



B: Apps are great sharing method for multiple environment, and best way of sharing for users in production environment. Power BI App is the solution for multiple environment approach. With Power BI App, your development environment (workspace), and user environment (App) are isolated from each other.  
 Note: If you are using SharePoint online as a portal for document management and some other reasons already, then consider using Embed in SharePoint Online feature of Power BI reports. This method is secure and you can share the report only with Power BI users you want.  
 E: Sometimes, you don't need a secure way of sharing, you may search for an easy and free way of sharing, and your content is not confidential or sensitive. Publish to web is your friend in such situation. This is the only free way of sharing in Power BI, but be aware that this method is not secure. Publish to web method, gives you an embed code, which you can use in any web pages to embed the Power BI report in it

### NEW QUESTION 2

Your company has an on premises Microsoft SQL Server database that contains legacy sales data. You must display information from the database in a new Power Apps app. You need to establish a secure connection between the database and the app. What should you use?

- A. Data source
- B. App
- C. Gateway
- D. Flow

**Answer:** C

#### Explanation:

For an on-premises database, identify a data gateway that was shared with you (or create one). Specify Connect using on-premises data gateway, type or paste the server name, the database name, the user name, and the password for the database that you want to use, and specify the authentication type and the gateway.

NEW QUESTION 3

A toy company creates a text classification model in AI Builder to monitor customer feedback for specific key words. When negative feedback is received for a toy, the company wants to proactively perform engineering reviews for the toy and schedule additional training sessions for workers who produce the toy. What are two possible ways to achieve the goal? Each correct answer presents a complete solution. NOTE: Each correct selection is worth one point.

- A. Create a canvas app.
- B. Implement the Virtual Agent.
- C. Build a Microsoft Flow.
- D. Use the Common Data Model.

Answer: AC

Explanation:

A (not D): AI Builder comes with:  
A ready-to-use business card reader available in canvas as well as in model-driven apps. Business card reader (Canvas)  
Business card reader (Model-driven)  
Additional canvas components to leverage your AI Builder form processing or object detection models canvas apps.  
C: Use the results from your AI model across Power Platform to create end-to-end solutions that meet your business needs, even if you have no coding skills. For example, create a flow that automates document processing in Power Automate, or an app created with PowerApps that predicts whether a supplier will be out of compliance.

NEW QUESTION 4

A large retail company implements Power Apps, Microsoft Flow, and the Common Data Service. The board of directors is asking whether users are finding value in the technology. The company would like to measure and report usage of the software. You need to recommend a tool to determine software usage. What should you recommend?

- A. Microsoft Intune
- B. Azure Stream Analytics
- C. Power Platform Analytics
- D. Dynamics 365 Product Insights

Answer: C

Explanation:

The Power Platform Analytics Usage report is the default reports seen by the logged in environment admin. It provides total app launches and daily active users across all apps in the environment. Admins can filter the view with attributes like device platform, player version, country, state, and city.

NEW QUESTION 5

A company plans to implement solutions that use Common Data Service as a data storage. You need to recommend features to meet the company's needs. Which features should you recommend? To answer, drag the appropriate features to the correct requirements. Each feature may be used once, more than once, or not at all. You may need to drag the split bar between panes or scroll to view content. NOTE: Each correct selection is worth one point.

Features	Requirement	Feature
business rules		
business process flows	Validate data across multiple fields and entities regardless of the app used to create data.	Feature
Common Data Model	Create visual guides to ensure that users enter data and perform tasks in a consistent manner.	Feature
	Accelerate development by using a standard set of entities for the most common scenarios.	Feature

- A. Mastered
- B. Not Mastered

Answer: A

Explanation:

Box 1: business rules  
You can create business rules and recommendations to apply logic and validations without writing code or creating plug-ins. Business rules provide a simple interface to implement and maintain fast-changing and commonly used rules.

Box 2: business process flows

Flows Power Automate includes several types of processes, each designed for a different purpose:

- Automated flows. Create a flow that performs one or more tasks automatically after it's triggered by an event.
- Button flows. Perform repetitive tasks simply by tapping a button on your mobile device.
- Scheduled flows. Create a flow that performs one or more tasks on a schedule such as once a day, on a specific date, or after a certain time.
- Business process flows. Ensure that people enter data consistently and follow the same steps every time they work in an app by creating a business process flow.
- Workflows and actions. Dynamics 365 customizers may be familiar with the classic Common Data Service processes, which are workflows and actions.

Box 3: Common Data Model

Model-driven app design is a component-focused approach to app development. Model-driven app design doesn't require code and the apps you make can be simple or very complex. Unlike canvas app development where the designer has complete control over app layout, with model-driven apps much of the layout is determined for you and largely designated by the components you add to the app.

NEW QUESTION 6

A company plans to use Microsoft Flow to automate tasks.

Match each flow type to its function. To answer, drag the appropriate flow type from the column on the left to its description on the right. Each option may be used once, more than once, or not at all.

NOTE: Each correct match is worth one point.

Flow types

automated

business process

scheduled

instant

Answer Area

Description

a flow that runs after it is triggered by an event

a flow that guides a user through a set of tasks

a flow that runs after a specified number of days

a flow that allows you to start tasks on-demand

Flow type

Flow type

Flow type

Flow type

Flow type

- A. Mastered
- B. Not Mastered

Answer: A

Explanation:

Box 1: automated

Automated flows start with an event or trigger, such as an email being received. These also support a multitude of actions in the 200+ Flow connectors.

Box 2: business process

The business process flow that creates stages or screens that enforce a certain sequence of steps. It collects data from users for each step in the stage and can kick off automated workflows.

Box 3: scheduled

Scheduled flows run regular reports that are sent out to a team and summarize everything that's happened in the past week. This includes everything from simple daily scheduling to more complex scheduling like "every 3rd Monday."

Box 4: instant

An instant flow is triggered when you click a button inside of the Flow mobile app, SharePoint, Dynamics, PowerApps, or Excel that passes context directly into your flow.

Note: There are four different Flow types that you can choose from when starting out. You can create a scheduled flow, automated flow, instant flow, or a business process flow.

NEW QUESTION 7

You need to implement Microsoft Business Applications along with the Microsoft Power platform. Which three Microsoft products are part of the Power platform?

Each correct answer presents a complete solution.

NOTE: Each correct selection is worth one point.

- A. Microsoft Power Apps
- B. Azure Active Directory
- C. Microsoft Flow
- D. Azure Machine Learning
- E. Microsoft Power BI

Answer: ACE

Explanation:

The Power Platform uses PowerApps, Power BI, and Power Automate (previously named Flow) to customize, extend, and build all the apps you need for your business and unlock the potential of Office 365 and Dynamics 365.



#### NEW QUESTION 8

Users within a company use Flow for personal productivity.  
 Users often overwrite their working flows by editing the definitions and are unable to undo changes after saving a flow.  
 You need to ensure that users can revert a flow to the current state.  
 Which two options can you use? Each correct answer presents a complete solution.  
 NOTE: Each correct selection is worth one point.

- A. Export
- B. Rename
- C. Save As
- D. Share

**Answer:** AC

#### Explanation:

A: You can export a flow as a package and import it into a different environment, or use it to restore the in the same environment at a later point in time.  
 C: The ability to make a copy of your flow is often useful when you want to create a flow similar to something you've already created. Or, if you want to maintain a draft of your working flow as you work on adding more functionality.  
 Here's how:  
 Go to your My flows page. Click on the More (...) menu item next to the flow that you want to create a copy of. Click on the Save As command.

#### NEW QUESTION 9

You are designing a Power Apps solution that allows users to upload a status report directly to the company Microsoft SharePoint project management site from their mobile device.  
 For each of the following statements, select Yes if the statement is true. Otherwise, select No.  
 NOTE: Each correct selection is worth one point.

Statement	Yes	No
You should build a model-driven app in Power Apps.	<input type="radio"/>	<input type="radio"/>
You should build a canvas app in Power Apps.	<input type="radio"/>	<input type="radio"/>
Users must download and run the Power Apps mobile application to use the solution.	<input type="radio"/>	<input type="radio"/>

- A. Mastered
- B. Not Mastered

**Answer:** A

#### Explanation:

Box 1: No  
 Box 2: Yes  
 Box 3: Yes  
 When you create an app, or someone shares an app with you, you can run that app on Windows, iOS, Android, or in a web browser.  
 References:  
<https://docs.microsoft.com/en-us/powerapps/maker/canvas-apps/app-from-sharepoint> <https://docs.microsoft.com/en-us/powerapps/user/run-app-client>

#### NEW QUESTION 10

A company uses Dynamics 365 Supply Chain Management.  
 When a sales order is created for one of the customers that a specific user manages, a Microsoft Outlook task must be created to remind the user to perform any follow up activities that are required.  
 You need to implement the functionality to create Outlook tasks.  
 Which two features should you use? Each correct answer presents part of the solution.  
 NOTE: Each correct selection is worth one point.

- A. AI Builder
- B. Power Apps
- C. Business Events
- D. Microsoft Flow
- E. Common Data Service

**Answer:** CD

Explanation:

Business events in Microsoft Power Automate  
Business events can be consumed in Microsoft Power Automate via the application connector. The connector has a trigger that is named when a business event occurs. This trigger can be used to subscribe to any of the business events that are available in the target instance of the application.

NEW QUESTION 10

You are new to working with Microsoft Flow. You create a flow that extracts birth dates for users and then sends a birthday greeting email to users on their birthday.  
The flow does not properly extract birth dates. Where should you make changes?

- A. Connectors
- B. Expression
- C. Templates

Answer: A

Explanation:

Select the new Date Time connector. There you will see all of the actions, which help you to convert time zones to format them for local time in an email, add or subtract times, or just get the current time.

NEW QUESTION 13

A company plans to use Power Apps to connect to a series of custom services. There are no connectors available for the custom services.  
For each of the following statements, select Yes if the statement is true. Otherwise, select No.  
NOTE: Each correct selection is worth one point.

Statement	Yes	No
Custom connectors for customer-specific services do not require review and certification by Microsoft.	<input type="radio"/>	<input type="radio"/>
You can build a custom connector once and reuse the connector for Power Apps and Microsoft Flow.	<input type="radio"/>	<input type="radio"/>
You can make custom connectors publicly available for all Power Platform users without having Microsoft certify the connector.	<input type="radio"/>	<input type="radio"/>

- A. Mastered
- B. Not Mastered

Answer: A

Explanation:

Box 1: Yes  
Only if you would like to share your connector with all users of Logic Apps, Microsoft Flow, and PowerApps, you can submit your connector for Microsoft certification. Microsoft will review your connector.  
Box 2: Yes  
Connectors created in Microsoft Flow are available in PowerApps. Likewise, connectors created in PowerApps are available in Microsoft Flow.  
Box 3: No  
If you would like to share your connector with all users of Logic Apps, Microsoft Flow, and PowerApps, you can submit your connector for Microsoft certification. Microsoft will review your connector.

NEW QUESTION 18

A company uses Power Apps.  
You need to perform administrative tasks for the company.  
Which admin centers should you use? To answer, drag the appropriate admin centers to the correct requirements. Each admin center may be used once, more than once, or not at all. You may need to drag the split bar between panes or scroll to view content.  
NOTE: Each correct selection is worth one point.

Admin centers	Answer Area	Requirement	Admin center
<div>Azure Active Directory</div>			
<div>Dynamics 365 Admin center</div>		Create user accounts for Power Apps.	<div>Admin center</div>
<div>Power Apps Admin center</div>		Assign the Environment Maker role to a user.	<div>Admin center</div>
<div>Power BI Admin portal</div>			

- A. Mastered
- B. Not Mastered

Answer: A

Explanation:

Box 1: Azure Active Directory  
Create the company users in the Azure Active Directory. Box 2: Power Apps admin center  
In the Power Apps Admin center, manage environments that you've created and those for which you have been added to the Environment Admin or System Administrator role. From the admin center, you can perform these administrative actions:  
Create environments. Rename environments.  
Add or remove a user or group from either the Environment Admin or Environment Maker role. Etc.

NEW QUESTION 22

You have a Power BI report.  
For each of the following statements, select Yes if the statement is true. Otherwise, select No. NOTE: Each correct selection is worth one point.

Statement	Yes	No
You can export data from a visualization in a Power BI report.	<div></div>	<div></div>
You can show the data behind a visual report on your screen without exporting the data.	<div></div>	<div></div>
You must export data to view supporting data for a KPI.	<div></div>	<div></div>

- A. Mastered
- B. Not Mastered

Answer: A

Explanation:

Box 1: Yes  
If you'd like to see the data that Power BI uses to create a visualization, you can display that data in Power BI. You can also export that data to Excel as an .xlsx or .csv file. The option to export the data requires a Pro or Premium license and edit permissions to the dataset and report.  
Note: Export data from a Power BI dashboard

- > Choose the Export data icon.
- > Power BI exports the data to a .csv file. If you've filtered the visualization, then the app will filter the downloaded data.
- > Your browser will prompt you to save the file. Once saved, open the .csv file in Excel.

Box 2: No  
Underlying data: Select this option if you want to see the data in the visual and additional data from the model (see chart below for details). If your visualization has



an aggregate, selecting Underlying data removes the aggregate. When you select Export, Power BI exports the data to an .xlsx file and your browser prompts you to save the file. Once saved, open the file in Excel.

Box 3: Yes

A KPI dataset needs to contain goal values for a KPI. If your dataset doesn't contain goal values, you can create them by adding an Excel sheet with goals to your data model or PBIX file.

Note: A Key Performance Indicator (KPI) is a visual cue that communicates the amount of progress made toward a measurable goal.

NEW QUESTION 23

A company needs to create a series of mobile applications to empower their field engineers to accomplish several tasks with varying degrees of complexity. Match each option to its answer.

Instructions: To answer, drag the appropriate app type from the column on the left to its definition on the right. Each app type may be used once, more than once, or not at all.

NOTE: Each correct match is worth one point.

App types	Answer Area
	Definition
model-driven	
dashboard	Quickly create apps for very complex business processes with very little or no code.
dataset	Create simple apps with a highly customizable user interface layouts.
canvas	

App type

App type

App type

- A. Mastered
- B. Not Mastered

Answer: A

Explanation:

Box 1: canvas

Both model-driven and canvas apps allow you to easily build business apps. They both share access to the Common Data Service providing standard and custom entities. Canvas apps start with your user experience, crafting a highly tailored interface with the power of a blank canvas and connecting it to 200 data sources. Canvas apps can be built for web, mobile, and tablet applications. Model-driven apps start with your data model – building up from the shape of your core business data and processes in the Common Data Service to model forms, views, and other components. Model-driven apps automatically generate great UI that is responsive across devices.

Box 2: model-driven

NEW QUESTION 25

.....



## Thank You for Trying Our Product

### We offer two products:

1st - We have Practice Tests Software with Actual Exam Questions

2nd - Questons and Answers in PDF Format

### PL-900 Practice Exam Features:

- \* PL-900 Questions and Answers Updated Frequently
- \* PL-900 Practice Questions Verified by Expert Senior Certified Staff
- \* PL-900 Most Realistic Questions that Guarantee you a Pass on Your FirstTry
- \* PL-900 Practice Test Questions in Multiple Choice Formats and Updatesfor 1 Year

**100% Actual & Verified — Instant Download, Please Click**  
**[Order The PL-900 Practice Test Here](#)**