

Exam Questions mb-300

Microsoft Dynamics 365 Unified Operations Core

<https://www.2passeasy.com/dumps/mb-300/>



NEW QUESTION 1

- (Exam Topic 1)

You need to configure check printing for Munson's.

Which four actions should you perform in sequence? To answer, move the appropriate actions from the list of actions to the answer area and arrange them in the correct order.

Actions	Answer Area
Install the Document Routing Agent on the client machines where users will be printing the checks.	
Navigate to the legal entity and enable the printer.	
Select the legal entities for the printer to be available.	
Discover and add the check printer from the Document Routing Agent.	
Enter the Dynamics 365 Finance and Operations configurations in the Document Routing Agent.	
Discover and add the check printer to the system from Dynamics 365 Finance and Operations.	
Install the Document Routing Agent on the corporate print server.	
Register the Document Routing Agent with Dynamics 365 Finance and Operations.	

- A. Mastered
- B. Not Mastered

Answer: A

Explanation:

Reference:

<https://docs.microsoft.com/en-us/dynamics365/unified-operations/dev-itpro/analytics/install-document-routing-a>

NEW QUESTION 2

- (Exam Topic 1)

You need to connect the Excel instance to the Relecloud production instance. What should you do?

- A. Set the server URL to Microsoft.Dynamics.Platform.Integration.Office.UrlViewerApplet.
- B. Set the server URL to <https://relecloud-prod.operations.dynamics.com>.
- C. Set the App Correlation ID to <https://relecloud-prod.operations.dynamics.com>.
- D. Set the App Correlation ID to the App Id in the Dynamics 365 Office App Parameters.

Answer: B

Explanation:

Reference:

<https://docs.microsoft.com/en-us/dynamics365/unified-operations/dev-itpro/office-integration/use-excel-add-in>

NEW QUESTION 3

- (Exam Topic 1)

You need to determine why the sales associate is not able to see Munson's in the search results. What is the cause of the issue?

- A. The search criteria is searching for only names that are exactly 'pickles'.
- B. The search criteria is only able to search by the shortened search name of the customer.
- C. The search criteria is searching for all customer names that start with 'pickles'.
- D. The search criteria is case sensitive.

Answer: C

Explanation:

Reference:

<https://docs.microsoft.com/en-us/dynamics365/customer-engagement/basics/search-records>

NEW QUESTION 4

- (Exam Topic 2)

You plan the migration from Dynamics AX 2012 R3 to a Dynamics 365 for Finance and Operations environment. You will be using Lifecycle Services (LCS) and the tools provided with it.

You need to clean up data, review and configure SQL optimizations, and identify deprecated features in your code. What tool should you use?

- A. Microsoft Azure DevOps
- B. Upgrade analyzer
- C. Data Import/Export Framework (DIXF)
- D. Code upgrade estimation tools

Answer: B

NEW QUESTION 5

- (Exam Topic 2)

You are a Dynamics 365 for Finance and Operations system administrator.

Users have been creating advanced queries for filter data on forms. They want to be able to save the filter data for later use and access those views when they log in.

You need to instruct them in how to do this.

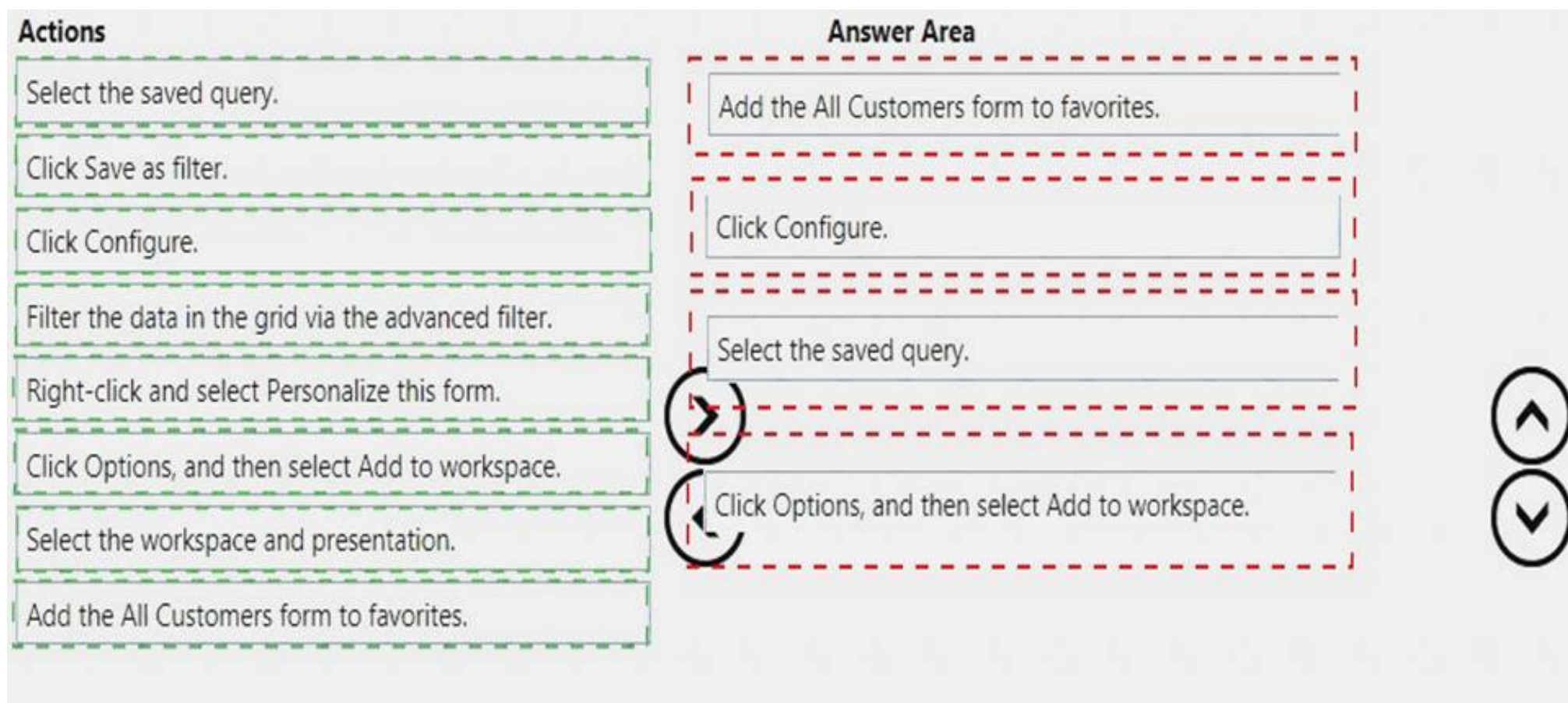
Which four actions should end users perform in sequence? To answer, move the appropriate actions from the list of actions to the answer area and arrange them in the correct order.

Actions		Answer Area
Select the saved query.		
Click Save as filter.		
Click Configure.		
Filter the data in the grid via the advanced filter.		
Right-click and select Personalize this form.	➤	⬆
Click Options, and then select Add to workspace.	⬅	⬇
Select the workspace and presentation.		
Add the All Customers form to favorites.		

- A. Mastered
- B. Not Mastered

Answer: A

Explanation:



NEW QUESTION 6

- (Exam Topic 2)

You develop a new purchasing solution for a Dynamics 365 for Finance and Operations environment. You must provide functional test passes for the purchasing solution.

You need to plan a production environment test flow for the purchasing solution. What three steps should you verify in the functional passes of the purchasing solution?

- A. Purchase orders are generated
- B. Item requirements are present
- C. Production order processing occurs
- D. Production orders are generated
- E. The item master is designed and released to a legal entity

Answer: ABE

NEW QUESTION 7

- (Exam Topic 2)

You plan the migration from a Dynamics AX 2012 to a Dynamics 365 for Finance and Operations environment.

You are tasked with overseeing and planning a cutover to guarantee a smooth experience for end users during the cutover. You perform a basic data upgrade validation.

You need to perform a cutover.

Which three tasks must you perform? Each correct answer presents part of the solution. NOTE: Each correct selection is worth one point.

- A. Perform a smoke test.
- B. Copy the upgraded database from the sandbox environment into the production environment.
- C. Complete application setup tasks.
- D. Ensure that Synchronous transfer mode is enabled
- E. Enable the Microsoft Power BI AppSource content packs for Cost management, Financial performance, and Retail channel performance.

Answer: BCE

NEW QUESTION 8

- (Exam Topic 2)

Note: This question is part of a series of questions that present the same scenario. Each question in the series contains a unique solution that might meet the stated goals. Some question sets might have more than one correct solution, while others might not have a correct solution.

After you answer a question in this section, you will NOT be able to return to it. As a result, these questions will not appear in the review screen.

You are a functional consultant who is deploying Dynamics 365 for Finance and Operations. The implementation must:

- ☒ Use an iterative approach
- ☒ Integrate with real-world data
- ☒ Enforce standards and governance
- ☒ Implement multiple rounds of feedback

You need to deploy and validate the implementation.

Solution: Use the XPPBP tool to export customizations and scenarios from a development sandbox. Make changes to the sandbox containing users. Deploy from the sandbox to the production environment.

Does the solution meet the goal?

- A. Yes
- B. No

Answer: B

NEW QUESTION 9

- (Exam Topic 2)

You are responsible for regulatory compliance for a Dynamics 365 for Finance and Operations environment. You need to be able to search for the regulatory features of Dynamics 365 for Finance and Operations.

What should you use?

- A. Intelligent Data Management Framework (IDMF)
- B. System diagnostics
- C. Application Object Tree (AOT)
- D. Issue search

Answer: D

Explanation:

References:

<https://docs.microsoft.com/en-us/dynamics365/unified-operations/dev-itpro/lifecycle-services/issue-search-lcs>

NEW QUESTION 10

- (Exam Topic 2)

You are a Dynamics 365 for Finance and Operations systems administrator.

Your company needs to document and test all possible scenarios for a given implementation. Implementation gaps need to be documented using the tool available for tracking and linking to delivered extensions.

You need to identify the correct tool to accomplish this. What should you use?

- A. APQC Unified Libraries
- B. Shared asset library
- C. Business process modeler (BPM)
- D. Microsoft Azure DevOps

Answer: C

NEW QUESTION 10

- (Exam Topic 2)

You are a Dynamics 365 for Finance and Operations system administrator.

The expense department relies heavily on properly operating workflows. If there is a failure in the workflow, the issue needs to get resolved quickly.

You need to make sure that the system actively tracks the status, so the support team can monitor and take actions against any failures.

What should you do? Each correct answer presents a complete solution.

NOTE: Each correct selection is worth one point.

- A. Set the monitoring category of the Workflow message processing batch job to Workflow.
- B. Set the critical job flag of the Workflow message processing batch job to True.
- C. Set the Ignore task failure flag of the Workflow message processing batch job to False.
- D. Set the batch job named Workflow message processing to send an email when the status of the batch job is Error.
- E. Set the priority field of the Workflow message processing batch job to 1.

Answer: BCD

NEW QUESTION 11

- (Exam Topic 2)

During the implementation planning process, a company decides to migrate various functional data from its legacy systems. These include accounting data, sales data, and purchasing data.

Some functional data elements reference data stored in other tables.

You need to ensure that data types and data elements are imported in the correct order.

In what order should you perform the data migration? To answer, select the appropriate configuration in the answer area.

NOTE: Each correct selection is worth one point.

Answer Area

Sequential order

Data category

Order options

Master, reference, transaction
 Reference, master, transaction
 Transaction, reference, master
 Transaction, master, reference

Data entity

Ledger journals, chart of accounts, account structures
 Chart of accounts, account structures, ledger journals
 Account structures, chart of accounts, ledger journals
 Ledger journals, account structures, chart of accounts

- A. Mastered
- B. Not Mastered

Answer: A

Explanation:

Answer Area

Sequential order	Order options
Data category	<div>Master, reference, transaction</div> <div>Reference, master, transaction</div> <div>Transaction, reference, master</div> <div>Transaction, master, reference</div>
Data entity	<div>Ledger journals, chart of accounts, account structures</div> <div>Chart of accounts, account structures, ledger journals</div> <div>Account structures, chart of accounts, ledger journals</div> <div>Ledger journals, account structures, chart of accounts</div>

NEW QUESTION 12

- (Exam Topic 2)

A multinational company plans to implement centralized procurement using purchase requisition workflows. Multiple workflows must be of the same type. Each region must use its own purchase requisition workflow. You need to implement the workflows. What should you do?

- A. Configure Instructions for users
- B. Configure the workflow owner
- C. Configure automated tasks
- D. Configure manual tasks
- E. Add a condition for running the workflow

Answer: E

NEW QUESTION 14

- (Exam Topic 2)

You are a Dynamics 365 for Finance and Operations system administrator.

You manage a system that imports a large volume of sales orders from multiple systems daily. The system encounters a performance problem due to the amount of data.

You need to improve performance for the import. What should you do?

- A. Create an ODBC-type source data format and import directly from the database.
- B. Enable data import in recurrence.
- C. Configure entity execution parameters to make the data import multi-threaded.
- D. Enable change for the data entities.

Answer: C

NEW QUESTION 16

- (Exam Topic 2)

A company implements Dynamics 365 for Finance and Operations.

You are responsible for creating a custom feature within a solution by using Microsoft Azure DevOps. Testers have found a bug while running one of the User Acceptance Testing (UAT) scripts. However, it is not a high-severity bug and has been found to not have interconnected dependencies to other branches within the process flow.

You need to deploy the passed functionality features. What should you do?

- A. Exclude the specific package from the Business process modeler (BPM).
- B. Exclude the specific package from the data package in the Data management tool.
- C. Exclude the specific package from the deployable package in Microsoft Azure DevOps.
- D. Exclude the specific package from the deployable package in Configuration data manager.

Answer: C

NEW QUESTION 19

- (Exam Topic 2)

Note: This question is part of a series of questions that present the same scenario. Each question in the series contains a unique solution that might meet the stated goals. Some question sets might have more than one correct solution, while others might not have a correct solution.

After you answer a question in this section, you will NOT be able to return to it. As a result, these questions will not appear in the review screen.

You are configuring a Dynamics 365 for Finance and Operations environment. You must set up Microsoft Excel data exports.

You need to verify that the solution will result in a successful export of data to Excel.

Solution: Use Workbook Designer to build an editable custom export of customer data that includes only postal code, city, and state.

Does the solution meet the goal?

- A. Yes
- B. No

Answer: A

NEW QUESTION 23

- (Exam Topic 2)

You are a Dynamics 365 for Finance and Operations implementation consultant. You plan to use automated regression testing in a company's environment, as the system will be updated frequently until automatic updates can be applied. You need to identify when and what key business object should be used during the implementation. Which business objects should you use? To answer, drag the appropriate objects to the correct component actions. Each object may be used once, more than once, or not at all. You may need to drag the split bar between panes or scroll to view content. NOTE: Each correct selection is worth one point.

1234

Objects

Test scripts

Business requirements

Answer Area

Component actions

Generate from the analysis meetings

Use for regression testing

Generate use cases

Use in a gap analysis process

Object

Object

Object

Object

Object

- A. Mastered
- B. Not Mastered

Answer: A

Explanation:

1234

Objects

Test scripts

Business requirements

Answer Area

Component actions

Generate from the analysis meetings

Use for regression testing

Generate use cases

Use in a gap analysis process

Object

Test scripts

Test scripts

Business requirements

Business requirements

NEW QUESTION 25

- (Exam Topic 2)

You manage a Dynamics 365 for Finance and Operations environment. Users report slow queries, deadlocks, and crashes. You need identify which tool to use to troubleshoot. What should you use?

- A. System diagnostics
- B. Environment monitoring
- C. DirectQuery
- D. Microsoft Azure Active Directory Connect Health Agent

Answer: B

Explanation:

Reference:
<https://blogs.msdn.microsoft.com/axsa/2018/06/05/how-to-use-environment-monitoring-view-raw-logs/>

NEW QUESTION 30

- (Exam Topic 2)

You are working as a functional consultant in a new Dynamics 365 for Finance and Operations environment. Your organization conducts business within the United States, with offices in several states. The organization has legal entities defined for each state and must share common tables between entities. Each legal entity has the following setup:

- Users
- Products
- Customers
- Tax authorities

Passing Certification Exams Made Easy

visit - <https://www.2PassEasy.com>

- ▶ Payment terms
- ▶ Human Resources data
- ▶ Site-specific stock ordering

You need to consolidate reports used for financial-consolidation reporting in a new legal entity. What should you do?

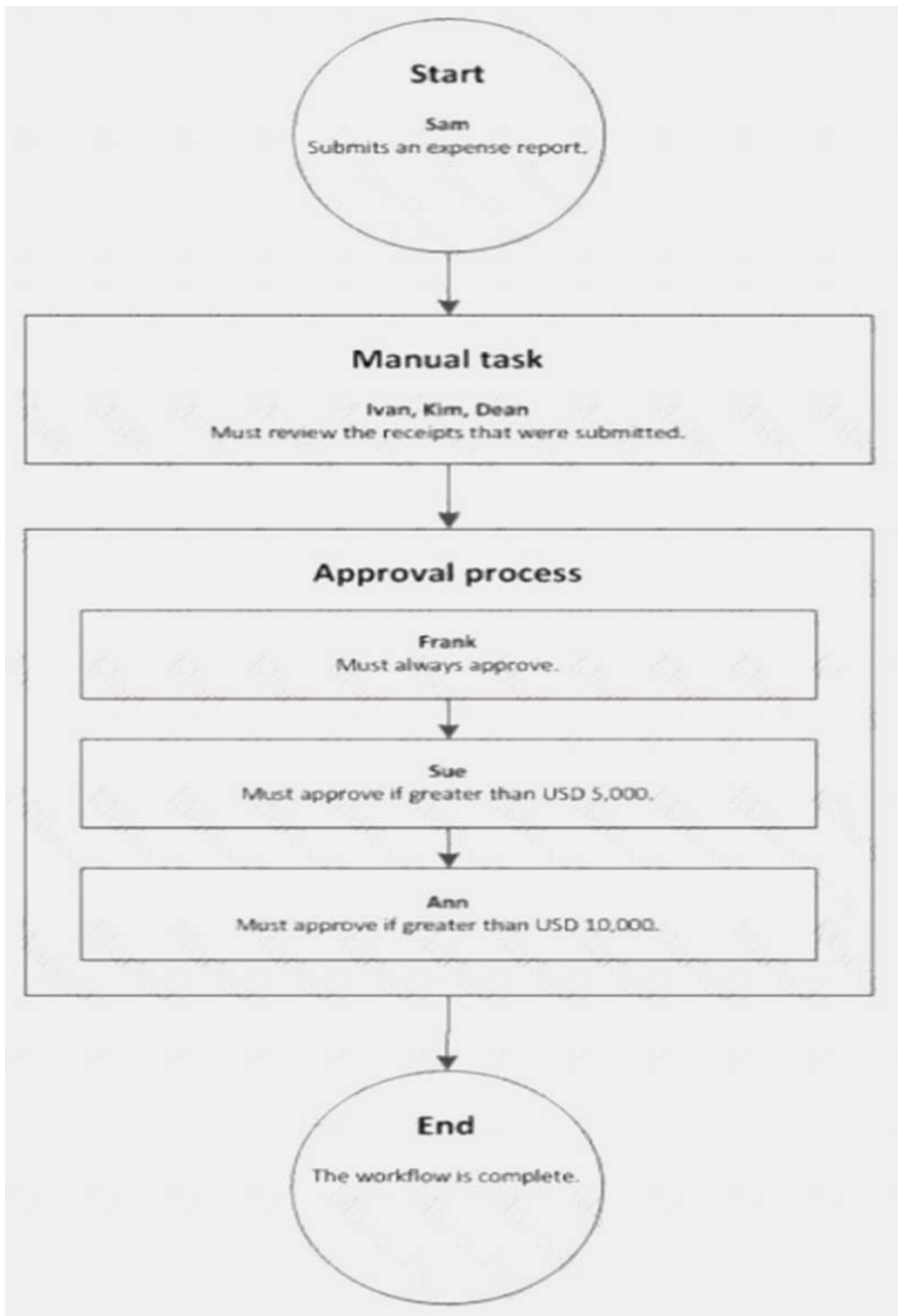
- A. Define the consolidation period
- B. Specify the range of product for consolidation
- C. Define Human Resources data
- D. Create users

Answer: A

NEW QUESTION 35

- (Exam Topic 2)

A company sets up a workflow for expense reports. An employee named Sam submits an expense report totaling USD 7,000 to go through the workflow.



Use the drop-down menus to select the answer choice that answers each question based on the information presented in the graphic.

NOTE: Each correct selection is worth one point.

Questions	Answer choice
What statement about the workflow is correct?	Ann can reject the expense report. Ivan, Kim, and Dean must all complete the manual task. The workflow ends after Sue approves the expense report. The expense report will go through Frank, Sue, and Ann for approval.
What type of workflow is this?	Workflow with roles Workflow with a manual decision Workflow with multiple users in a task Workflow with a line-item workflow element

- A. Mastered
- B. Not Mastered

Answer: A

Explanation:

Reference:
https://docs.microsoft.com/en-us/dynamicsax-2012/appuser-itpro/workflow-with-multiple-users-in-a-task

NEW QUESTION 38

- (Exam Topic 2)
Your company is using a highly customized version of Dynamics 365 for Finance and Operations. You have identified a new hotfix that will correct several important issues that have caused many user complaints.
You need to determine whether the hotfix will break any customizations.
Which four actions should you perform in sequence? To answer, move the appropriate actions from the list of actions to the answer area and arrange them in the correct order.

Actions

Upload the hotfix to Lifecycle Services

Download the hotfix from Lifecycle Services

Check in the entire hotfix as pending change and schedule and deploy it to the production environment

Build the hotfix in the development environment and accept changes

Install the hotfix in your Microsoft Azure DevOps application development environment in an Active state

Install the hotfix in your Microsoft Azure DevOps application development environment in a Pending state

Answer Area

- A. Mastered
- B. Not Mastered

Answer: A

Explanation:

References:
https://docs.microsoft.com/en-us/dynamics365/unified-operations/dev-itpro/migration-upgrade/install-metadata-

NEW QUESTION 42

- (Exam Topic 2)
You are a Dynamics 365 for Finance and Operations system administrator.
The finance department is experiencing electronic reporting submittal issues. You must use all available sources to troubleshoot those issues.
You need to identify potential hotfixes.
Which four actions should you perform in sequence? To answer, move the appropriate actions from the list of actions to the answer area and arrange them in the correct order.

Actions

Log in to Lifecycle Services (LCS).

Use the Issue search tile.

Select a project to work in.

Enter the issue case number.

Enter search terms.

Create a new case.

>

<

Answer area

^

v

- A. Mastered
- B. Not Mastered

Answer: A

Explanation:

Reference:
<https://docs.microsoft.com/en-us/dynamics365/unified-operations/dev-itpro/lifecycle-services/issue-search-lcs>

NEW QUESTION 47

- (Exam Topic 2)
Note: This question is part of a series of questions that present the same scenario. Each question in the series contains a unique solution that might meet the stated goals. Some question sets might have more than one correct solution, while others might not have a correct solution.
After you answer a question in this section, you will NOT be able to return to it. As a result, these questions will not appear in the review screen.
You are a Dynamics 365 for Finance and Operations security administrator.
When testing security setups, users report that certain roles are gaining access to sensitive information via a form in the system.
You must investigate which user roles have what visibility and access level to system objects, and then send a report to the implementation team to address security compliance concerns.
You need to report the information from the system. Solution: Generate the User role assignments report. Does the solution meet the goal?

- A. Yes
- B. No

Answer: B

NEW QUESTION 52

- (Exam Topic 2)
Your company acquires hundreds of partnerships after it purchases a separate company. The separate company stores the partnership records in a legacy system.
You export Partnership and PartnershipGroup files from the legacy system into Microsoft Word format. You create Partnership and PartnershipGroup entities.
You need to import the partnerships into Dynamics 365 for Finance and Operations.
Which four actions should you perform in order? To answer, move four actions from the list of actions to the answer area and arrange them in the correct order.

Actions

Perform the data import.

Convert the Word files to OData format. In the Dynamics 365 client Data management workspace, create a new data project.

In SQL Server Management Studio, use the SQL Server Integration Services import wizard.

In the Visual Studio Finance and Operations project, use the Data entity wizard.

Convert the Word files to CSV format. In the Dynamics 365 client Data management workspace, create a new data project.

For each file, select the entities and upload the files.

Validate all entity data mapping.



Answer Area



- A. Mastered
- B. Not Mastered

Answer: A

Explanation:

Actions

Perform the data import.

Convert the Word files to OData format. In the Dynamics 365 client Data management workspace, create a new data project.

In SQL Server Management Studio, use the SQL Server Integration Services import wizard.

In the Visual Studio Finance and Operations project, use the Data entity wizard.

Convert the Word files to CSV format. In the Dynamics 365 client Data management workspace, create a new data project.

For each file, select the entities and upload the files.

Validate all entity data mapping.



Answer Area

Convert the Word files to CSV format. In the Dynamics 365 client Data management workspace, create a new data project.

Perform the data import.

In SQL Server Management Studio, use the SQL Server Integration Services import wizard.

Validate all entity data mapping.



NEW QUESTION 57

- (Exam Topic 2)

A company plans to create a global address book and additional address books for each line of business. You need to help add parties to the address books. What party types can you use for both the global address book and the additional address books? NOTE: Each correct selection is worth one point.

- A. Customer
- B. Vendor

- C. Person
- D. Competitor
- E. Organization

Answer: ABD

Explanation:

<https://docs.microsoft.com/en-sg/dynamics365/unified-operations/fin-and-ops/organization-administration/overv>

NEW QUESTION 62

- (Exam Topic 2)

You implement Dynamics 365 for Finance and Operations. The implementation will undergo User Acceptance Testing (UAT).

You create test case recordings. To coordinate testing across multiple environments, UAT must be integrated with Microsoft Azure DevOps.

You need to configure Business process modeler (BPM) and Azure DevOps to complete user acceptance testing.

Which three actions should you perform? Each correct answer presents a complete solution.

NOTE: Each correct selection is worth one point.

- A. Synchronize the BPM library with Azure DevOps
- B. Create a test pass and test case in Azure DevOps
- C. Upload saved Task recorder files to BPM
- D. Create a test plan and test suites in Azure DevOps
- E. Synchronize the BPM library with a Git repo
- F. Upload saved Task recorder files to Azure DevOps

Answer: ACD

Explanation:

References:

<https://docs.microsoft.com/en-us/dynamics365/unified-operations/dev-itpro/lifecycle-services/using-taskguides-and-bpm-to-create-user-acceptance-tests>

NEW QUESTION 64

- (Exam Topic 2)

You assign security roles to users in your company. The security roles contain one or more duty assignments. The purchasing manager role must be able to view payment journals. You need to edit the security configuration to meet the requirement. What should you do?

- A. Create a new security rol
- B. Create a purchasing manager duty and assign it to that rol
- C. Then assign the duty to the user.
- D. Create a new privileg
- E. Assign the View only permission to the privileg
- F. Then assign the privilege to the user.
- G. Edit the existing role and assign the View payment journal transactions permission level.
- H. Edit the duty to view only on the payment journa
- I. The duty is assigned to the purchasing manager role.

Answer: C

NEW QUESTION 66

- (Exam Topic 2)

A company plans to implement the case management feature of Dynamics 365 for Finance and Operations. You need to describe the scenarios in which you should use the case management tool. Which three scenarios should be used? Each correct answer presents a complete solution. NOTE: Each correct selection is worth one point.

- A. Since case activities can be assigned to different people, a case can use workflow.
- B. Although the sales module already has return-order functionality, case management is still used for customer returns and claims.
- C. Knowledge articles used by case management are associated with specific functional modules.
- D. A human resources generalist can use the case management tool to track employee interactions, even though the department stores confidential information about employees.
- E. A case can be used to track both external and internal issues.

Answer: CDE

Explanation:

References:

<https://docs.microsoft.com/en-us/dynamics365/unified-operations/fin-and-ops/organization-administration/cases>

NEW QUESTION 71

- (Exam Topic 2)

Note: This question is part of a series of questions that present the same scenario. Each question in the series contains a unique solution that might meet the stated goals. Some question sets might have more than one correct solution, while others might not have a correct solution.

After you answer a question in this section, you will NOT be able to return to it. As a result, these questions will not appear in the review screen.

You are a Dynamics 365 for Finance and Operations system administrator. You have a test environment that is used by several people at any given time.

You create a new data entity in your development and migrate the code to the test environment. In the test environment, you are unable to find the data entity in the list.

You need to locate the data entity.

Solution: In the Data management framework parameter screen, refresh the Entity list. Does the solution meet the goal?

- A. Yes
- B. No

Answer: A

NEW QUESTION 75

- (Exam Topic 2)

You are a Dynamics 365 for Finance and Operations implementation team lead.

A series of test plans need to be created and tracked during a company's development phase. Multiple users will be testing multiple aspects as code is released.

Issues and remediations to bugs will also need to be tracked.

You need to identify Microsoft solutions that offer these capabilities. What should you use?

- A. Microsoft Azure DevOps
- B. Dynamics 365 for Finance and Operations
- C. Solution management
- D. Lifecycle Services (LCS)

Answer: A

NEW QUESTION 80

- (Exam Topic 2)

Note: This question is part of a series of questions that present the same scenario. Each question in the series contains a unique solution that might meet the stated goals. Some question sets might have more than one correct solution, while others might not have a correct solution.

After you answer a question in this section, you will NOT be able to return to it. As a result, these questions will not appear in the review screen.

You are configuring a Dynamics 365 for Finance and Operations environment. You must set up Microsoft Excel data exports.

You need to verify that the solution will result in a successful export of data to Excel. Solution: Use OAuth authentication.

Does the solution meet the goal?

- A. Yes
- B. No

Answer: B

NEW QUESTION 82

- (Exam Topic 2)

You are a systems administrator at a company that has implemented Dynamics 365 for Finance and Operations.

New employees are starting at the company.

You need to extend the electronic signatures functionality to them.

Which two actions should you perform? Each answer presents part of the solution.

NOTE: Each correct selection is worth one point.

- A. On the Email parameters page, specify that SSL is required
- B. Specify the user's email address
- C. In License configuration, enable Maintenance mode
- D. Select the Electronic signature check box

Answer: CD

Explanation:

Reference:

<https://docs.microsoft.com/en-us/dynamics365/unified-operations/fin-and-ops/organization-administration/tasks>

NEW QUESTION 85

- (Exam Topic 2)

Note: This question is part of a series of questions that present the same scenario. Each question in the series contains a unique solution that might meet the stated goals. Some question sets might have more than one correct solution, while others might not have a correct solution.

After you answer a question in this section, you will NOT be able to return to it. As a result, these questions will not appear in the review screen.

You are a Dynamics 365 for Finance and Operations system administrator. You have a test environment that is used by several people at any given time.

You create a new data entity in your development and migrate the code to the test environment. In the test environment, you are unable to find the data entity in the list.

You need to locate the data entity. Solution: Reopen the client browser. Does the solution meet the goal?

- A. Yes
- B. No

Answer: B

NEW QUESTION 87

- (Exam Topic 2)

A company implements Dynamics 365 for Finance and Operations.

You are the primary approver for purchase requisitions that are greater than \$500,000. You are going on vacation for two weeks.

You need to assign another user as the approver only for purchase requisitions greater than \$500,000. What should you do?

- A. Under User Options, add a user and assign the scope of Module
- B. Under User Options, add a user and assign the scope of All
- C. Under User Options, add a user and assign the scope of Workflow

Answer: C

NEW QUESTION 91

- (Exam Topic 2)

Note: This question is part of a series of questions that present the same scenario. Each question in the series contains a unique solution that might meet the stated goals. Some question sets might have more than one correct solution, while others might not have a correct solution.

After you answer a question in this section, you will NOT be able to return to it. As a result, these questions will not appear in the review screen.

You are developing a file-based integration to Dynamics 365 for Finance and Operations.

Microsoft Excel files with 15,000 or more records need to be imported into the system periodically by individual users. The records need to be imported in full within a 5-minute approved window.

You need to determine how to accomplish the import into the system. Solution: Import the data by using the Excel Add-in.

Does the solution meet the goal?

- A. Yes
- B. No

Answer: A

NEW QUESTION 94

- (Exam Topic 2)

You are a Dynamics 365 for Finance and Operations system administrator. You create different workflows for Canada and the Unites States.

You must create a workflow that sends a notification to the North American workflow administrator with workflow comments in the notification.

You need to configure the workflows.

What option should you select for each scenario? To answer, select the appropriate options in the answer area. NOTE: Each correct selection is worth one point.

Scenario	Option
Include a notification with workflow-specific data.	Notification texts Work item instructions Placeholders Line-item workflows
Run a different workflow for each region.	Condition Automatic action Parallel activity Automated task
Send an email to a group of users by role when a workflow task is rejected.	Workflow user Participant Queue

- A. Mastered
- B. Not Mastered

Answer: A

Explanation:

Scenario	Option
Include a notification with workflow-specific data.	Notification texts Work item instructions Placeholders Line-item workflows
Run a different workflow for each region.	Condition Automatic action Parallel activity Automated task
Send an email to a group of users by role when a workflow task is rejected.	Workflow user Participant Queue

NEW QUESTION 95

- (Exam Topic 2)

A company implements Dynamics 365 for Finance and Operations.

The company wants to utilize Case management to track project issues and risks and associate them to the projects. Project managers will be responsible for managing the new cases.

You need to configure the system. What should you do?

- A. Create case subcategories named Issue and Risk.
- B. Create parent case categories named Issue and Risk.
- C. Create case activities for Issue and Risk.
- D. Create case category security roles named Issue and Risk and assign them to the Project managers duty.

Answer: A

NEW QUESTION 96

- (Exam Topic 2)

You are a Dynamics 365 for Finance and Operations systems administrator.

An issue has been reported that appears to be a base Dynamics 365 bug. The system was last updated three weeks ago. Searching for the issue by description in Lifecycle Services is not working.

You need to determine other ways to search for similar issues to help narrow down the search before opening a Microsoft ticket.

What are two ways to search for a released hotfix? Each correct answer presents a complete solution.

NOTE: Each correct selection is worth one point.

- A. By industry
- B. By Microsoft support ticket number
- C. By AOT object name
- D. Date range for release

Answer: BC

Explanation:

References:

<https://docs.microsoft.com/en-us/dynamics365/unified-operations/dev-itpro/lifecycle-services/issue-search-lcs>

NEW QUESTION 98

- (Exam Topic 2)

Note: This question is part of a series of questions that present the same scenario. Each question in the series contains a unique solution that might meet the stated goals. Some question sets might have more than one correct solution, while others might not have a correct solution.

After you answer a question in this section, you will NOT be able to return to it. As a result, these questions will not appear in the review screen.

You are developing a file-based integration to Dynamics 365 for Finance and Operations.

Microsoft Excel files with 15,000 or more records need to be imported into the system periodically by individual users. The records need to be imported in full within a 5-minute approved window.

You need to determine how to accomplish the import into the system. Solution: Import the data by using the recurring data integrations API. Does the solution meet the goal?

A. Yes

B. No

Answer: B

NEW QUESTION 102

.....

THANKS FOR TRYING THE DEMO OF OUR PRODUCT

Visit Our Site to Purchase the Full Set of Actual mb-300 Exam Questions With Answers.

We Also Provide Practice Exam Software That Simulates Real Exam Environment And Has Many Self-Assessment Features. Order the mb-300 Product From:

<https://www.2passeasy.com/dumps/mb-300/>

Money Back Guarantee

mb-300 Practice Exam Features:

- * mb-300 Questions and Answers Updated Frequently
- * mb-300 Practice Questions Verified by Expert Senior Certified Staff
- * mb-300 Most Realistic Questions that Guarantee you a Pass on Your FirstTry
- * mb-300 Practice Test Questions in Multiple Choice Formats and Updatesfor 1 Year