

Microsoft

Exam Questions MS-100

Microsoft 365 Identity and Services



NEW QUESTION 1

- (Exam Topic 1)

Your network contains an Active Directory forest named contoso.local. You purchase a Microsoft 365 subscription. You plan to move to Microsoft and to implement a hybrid deployment solution for the next 12 months. You need to prepare for the planned move to Microsoft 365. What is the best action to perform before you implement directory synchronization? More than one answer choice may achieve the goal. Select the BEST answer.

- A. Purchase a third-party X.509 certificate.
- B. Rename the Active Directory forest.
- C. Purchase a custom domain name.
- D. Create an external forest trust.

Answer: C

NEW QUESTION 2

- (Exam Topic 1)

Your network contains a single Active Directory domain and two Microsoft Azure Active Directory (Azure AD) tenants. You plan to implement directory synchronization for both Azure AD tenants. Each tenant will contain some of the Active Directory users. You need to recommend a solution for the planned directory synchronization. What should you include in the recommendation?

- A. Deploy two servers that run Azure AD Connect, and then filter the users for each tenant by using organizational unit (OU)-based filtering.
- B. Deploy one server that runs Azure AD Connect, and then specify two sync groups.
- C. Deploy one server that runs Azure AD Connect, and then filter the users for each tenant by using organizational unit (OU)-based filtering.
- D. Deploy one server that runs Azure AD Connect, and then filter the users for each tenant by using domainbased filtering.

Answer: A

Explanation:

References:
<https://docs.microsoft.com/en-us/azure/active-directory/hybrid/plan-connect-topologies#multiple-azure-adtenant>

NEW QUESTION 3

- (Exam Topic 1)

Your company has a Microsoft Azure Active Directory (Azure AD) tenant named contoso.com that includes the users shown in the following table.

Name	Usage location	Membership
User1	<i>Not applicable</i>	Group1
User2	United States	Group2
User3	United States	<i>Not applicable</i>

Group2 is a member of Group1.
You assign a Microsoft Office 365 Enterprise E3 license to User2 as shown in the following exhibit.

License options

Office 365 Enterprise E3

Azure Rights Management	<input checked="" type="checkbox"/> Off	<input type="checkbox"/> On
Exchange Online (Plan 2)	<input checked="" type="checkbox"/> Off	<input type="checkbox"/> On
Flow for Office 365	<input checked="" type="checkbox"/> Off	<input type="checkbox"/> On
Microsoft Forms (Plan E3)	<input checked="" type="checkbox"/> Off	<input type="checkbox"/> On
Microsoft Planner	<input checked="" type="checkbox"/> Off	<input type="checkbox"/> On
Microsoft StaffHub	<input checked="" type="checkbox"/> Off	<input type="checkbox"/> On
Microsoft Teams	<input checked="" type="checkbox"/> Off	<input type="checkbox"/> On
Office 365 ProPlus	<input checked="" type="checkbox"/> Off	<input type="checkbox"/> On
Office Online	<input checked="" type="checkbox"/> Off	<input type="checkbox"/> On
PowerApps for Office 365	<input checked="" type="checkbox"/> Off	<input type="checkbox"/> On
SharePoint Online (Plan 2)	<input type="checkbox"/> Off	<input checked="" type="checkbox"/> On
Skype for Business Online (Plan 2)	<input checked="" type="checkbox"/> Off	<input type="checkbox"/> On
Stream for Office 365	<input checked="" type="checkbox"/> Off	<input type="checkbox"/> On
Sway	<input checked="" type="checkbox"/> Off	<input type="checkbox"/> On
To-Do (Plan 2)	<input checked="" type="checkbox"/> Off	<input type="checkbox"/> On
Yammer Enterprise	<input checked="" type="checkbox"/> Off	<input type="checkbox"/> On

You assign Office 365 Enterprise E3 licenses to Group1 as shown in the following exhibit.

License options

Office 365 Enterprise E3

Azure Rights Management	<input checked="" type="checkbox"/> Off	<input type="checkbox"/> On
Exchange Online (Plan 2)	<input type="checkbox"/> Off	<input checked="" type="checkbox"/> On
Flow for Office 365	<input checked="" type="checkbox"/> Off	<input type="checkbox"/> On
Microsoft Forms (Plan E3)	<input checked="" type="checkbox"/> Off	<input type="checkbox"/> On
Microsoft Planner	<input checked="" type="checkbox"/> Off	<input type="checkbox"/> On
Microsoft StaffHub	<input checked="" type="checkbox"/> Off	<input type="checkbox"/> On
Microsoft Teams	<input checked="" type="checkbox"/> Off	<input type="checkbox"/> On
Office 365 ProPlus	<input checked="" type="checkbox"/> Off	<input type="checkbox"/> On
Office Online	<input checked="" type="checkbox"/> Off	<input type="checkbox"/> On
PowerApps for Office 365	<input checked="" type="checkbox"/> Off	<input type="checkbox"/> On
SharePoint Online (Plan 2)	<input checked="" type="checkbox"/> Off	<input type="checkbox"/> On
Skype for Business Online (Plan 2)	<input checked="" type="checkbox"/> Off	<input type="checkbox"/> On
Stream for Office 365	<input checked="" type="checkbox"/> Off	<input type="checkbox"/> On
Sway	<input checked="" type="checkbox"/> Off	<input type="checkbox"/> On
To-Do (Plan 2)	<input checked="" type="checkbox"/> Off	<input type="checkbox"/> On
Yammer Enterprise	<input checked="" type="checkbox"/> Off	<input type="checkbox"/> On

For each of the following statements, select Yes if the statement is true. Otherwise, select No. NOTE: Each correct selection is worth one point.

Statements	Yes	No
User1 is licensed to use Microsoft Exchange Online.	<input type="radio"/>	<input type="radio"/>
User1 is licensed to use Microsoft Exchange Online and Microsoft Share Point Online.	<input type="radio"/>	<input type="radio"/>
If you add User3 to Group2, the user will be licensed to use Microsoft Exchange Online.	<input type="radio"/>	<input type="radio"/>

- A. Mastered
- B. Not Mastered

Answer: A

Explanation:

Group-based licensing currently does not support groups that contain other groups (nested groups). If you apply a license to a nested group, only the immediate first-level user members of the group have the licenses applied.

References:

<https://docs.microsoft.com/en-us/azure/active-directory/users-groups-roles/licensing-group-advanced>

NEW QUESTION 4

- (Exam Topic 1)

You have a Microsoft 365 tenant that contains Microsoft Exchange Online.

You plan to enable calendar sharing with a partner organization named adatum.com. The partner organization also has a Microsoft 365 tenant.

You need to ensure that the calendar of every user is available to the users in adatum.com immediately. What should you do?

- A. From the Exchange admin center, create a sharing policy.
- B. From the Exchange admin center, create a new organization relationship
- C. From the Microsoft 365 admin center, modify the Organization profile settings.
- D. From the Microsoft 365 admin center, configure external site sharing.

Answer: B

Explanation:

References:

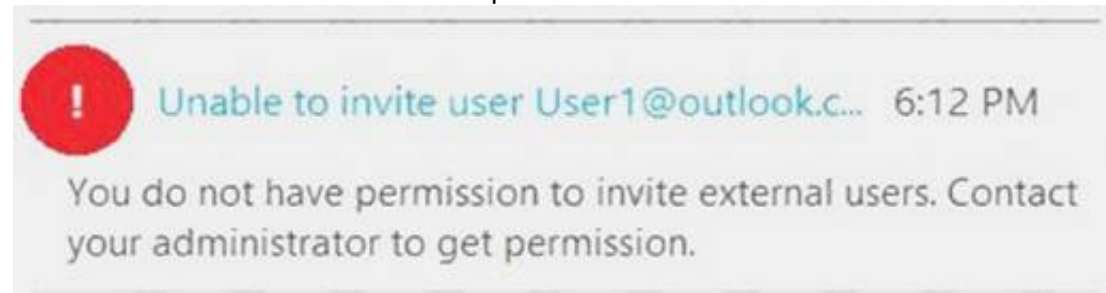
<https://docs.microsoft.com/en-us/exchange/sharing/organization-relationships/create-an-organization-relationshi>

NEW QUESTION 5

- (Exam Topic 1)

You have a Microsoft Azure Active Directory (Azure AD) tenant named contoso.onmicrosoft.com. An external user has a Microsoft account that uses an email address of user1@outlook.com.

An administrator named Admin1 attempts to create a user account for the external user and receives the error message shown in the following exhibit.



You need to ensure that Admin1 can add the user.

What should you do from the Azure Active Directory admin center?

- A. Add a custom domain name named outlook.com.
- B. Modify the Authentication methods.
- C. Modify the External collaboration settings.
- D. Assign Admin1 the Security administrator role.

Answer: C

NEW QUESTION 6

- (Exam Topic 1)

Your organization has an on-premises Microsoft Exchange Server 2016 organization. The organization is in the company's main office in Melbourne. The main office has a low-bandwidth connection to the Internet.

The organization contains 250 mailboxes.

You purchase a Microsoft 365 subscription and plan to migrate to Exchange Online next month. In 12 months, you plan to increase the bandwidth available for the Internet connection.

You need to recommend the best migration strategy for the organization. The solution must minimize administrative effort.

What is the best recommendation to achieve the goal? More than one answer choice may achieve the goal. Select the BEST answer.

- A. network upload
- B. cutover migration
- C. hybrid migration
- D. staged migration

Answer: C

NEW QUESTION 7

- (Exam Topic 1)

You have a Microsoft 365 subscription.

You suspect that several Microsoft Office 365 applications or services were recently updated. You need to identify which applications or services were recently updated.

What are two possible ways to achieve the goal? Each correct answer presents a complete solution.

NOTE: Each correct selection is worth one point.

- A. From the Microsoft 365 admin center, review the Message center blade.
- B. From the Office 365 Admin mobile app, review the messages.
- C. From the Microsoft 365 admin center, review the Products blade.
- D. From the Microsoft 365 admin center, review the Service health blade.

Answer: AB

NEW QUESTION 8

- (Exam Topic 1)

Your company has a Microsoft Office 365 subscription that contains the groups shown in the following table.

Name	Members
Group1	User1, User2
Group2	User3

You have the licenses shown in the following table.

License	Included service	Assigned to
Microsoft 365	Microsoft Exchange Online	Group1
Microsoft 365	Microsoft SharePoint Online	User1, User2, User3

Another administrator removes User1 from Group1 and adds Group2 to Group1.
For each of the following statements, select Yes if the statement is true. Otherwise, select No. NOTE: Each correct selection is worth one point.

Statements	Yes	No
User1 is licensed for SharePoint Online.	<input type="radio"/>	<input type="radio"/>
User2 is licensed for SharePoint Online.	<input type="radio"/>	<input type="radio"/>
User3 is licensed for SharePoint Online.	<input type="radio"/>	<input type="radio"/>

- A. Mastered
- B. Not Mastered

Answer: A

Explanation:
The users are assigned SharePoint licenses directly. Their group memberships have no effect on licenses directly assigned to the user accounts.

NEW QUESTION 9

- (Exam Topic 1)
Note: This question is part of a series of questions that present the same scenario. Each question in the series contains a unique solution that might meet the stated goals. Some question sets might have more than one correct solution, while others might not have a correct solution.
After you answer a question in this section, you will NOT be able to return to it. As a result, these questions will not appear in the review screen.
Your company has a Microsoft Office 365 tenant.
You suspect that several Office 365 features were recently updated.
You need to view a list of the features that were recently updated in the tenant.
Solution: You review the Security & Compliance report in the Microsoft 365 admin center. Does this meet the goal?

- A. Yes
- B. No

Answer: B

NEW QUESTION 10

- (Exam Topic 1)
You have a Microsoft 365 subscription.
You use the Microsoft Office Deployment tool to install Office 365 ProPlus. You create a configuration file that contains the following settings.

```
<Configuration>
  <Add SourcePath="\\Server1\Office"
    OfficeClientEdition="32"
    Channel="Broad"
    AllowCdnFallback="False">
    <Product ID="0365ProPlusRetail">
      <Language ID="en-us" />
      <Language ID="ja-jp" />
    </Product>
    <Product ID="VisioProRetail">
      <Language ID="en-us" />
      <Language ID="ja-jp" />
    </Product>
  </Add>
  <Remove All="TRUE">
    <Product ID="0365ProPlusRetail">
      <Language ID="en-us" />
    </Product>
    <Product ID="VisioProRetail">
      <Language ID="en-us" />
    </Product>
  </Remove>
  <Updates Enabled="TRUE"
    UpdatePath="\\Server1\Office"
    Channel="Broad" />
  <Display Level="None" AcceptEULA="TRUE" />
  <Logging Level="Standard" Path="%temp%" />
</Configuration>
```

Use the drop-down menus to select the answer choice that completes each statement based on the information presented in the graphic.
NOTE: Each correct selection is worth one point.

The [answer choice] will be uninstalled from the computers.

	▼
MSI version of Microsoft Visio only	
C2R version of Microsoft Visio only	
MSI and C2R versions of Microsoft Visio	

If the Office share on Server1 is missing the Japanese language pack, Office 365 ProPlus will [answer choice].

	▼
be installed in English only	
be installed in a randomly selected language	
NOT be installed	

- A. Mastered
- B. Not Mastered

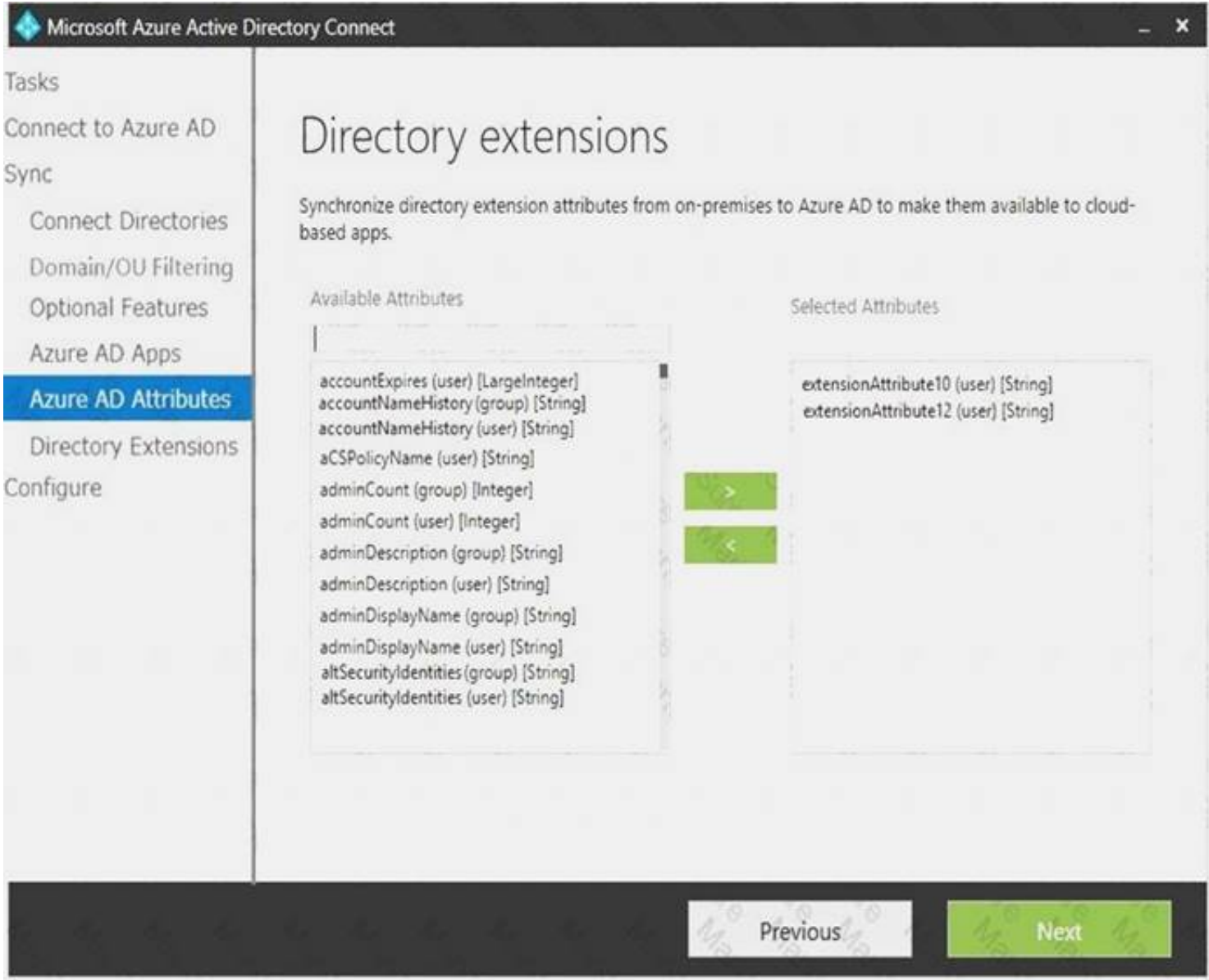
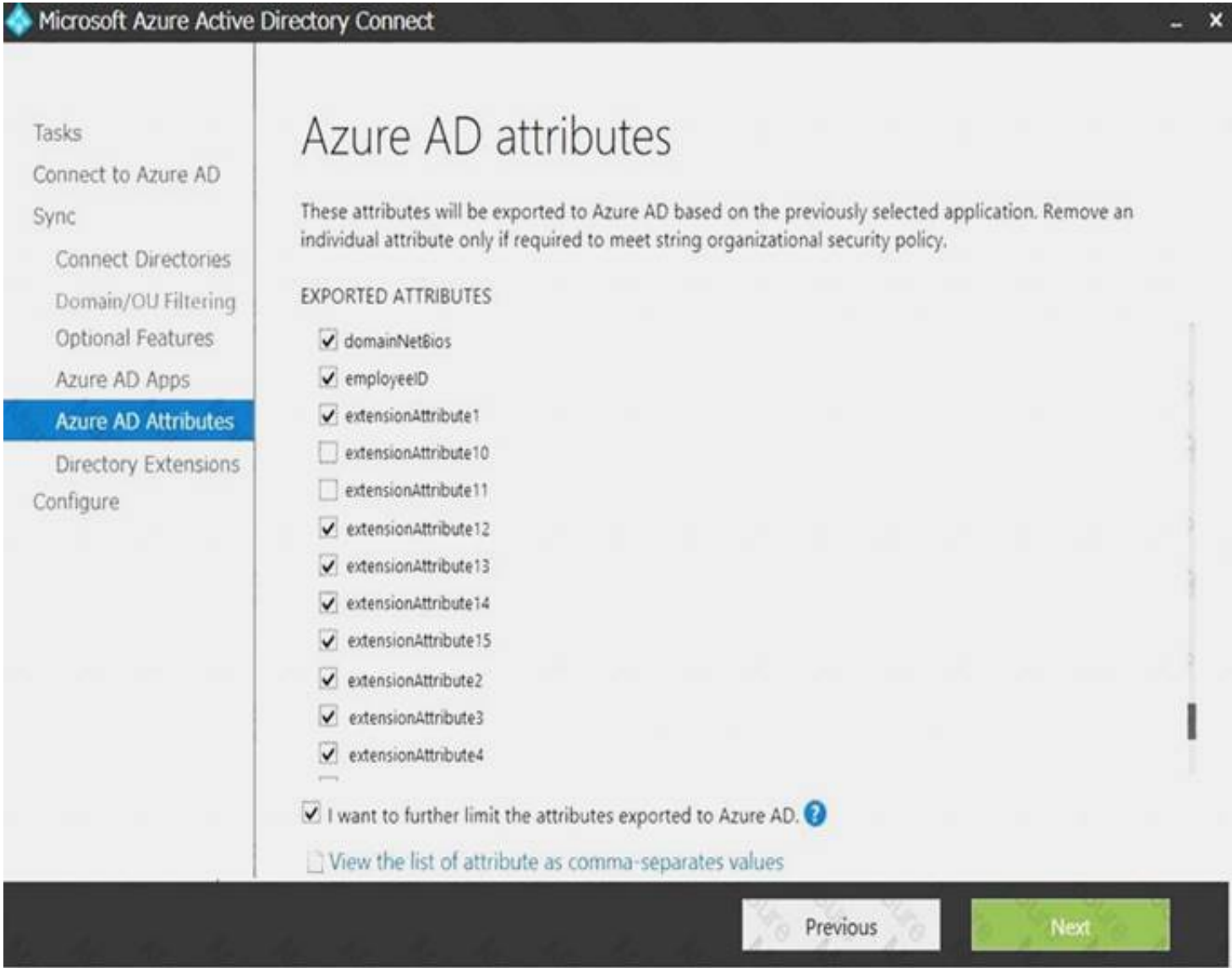
Answer: A

Explanation:

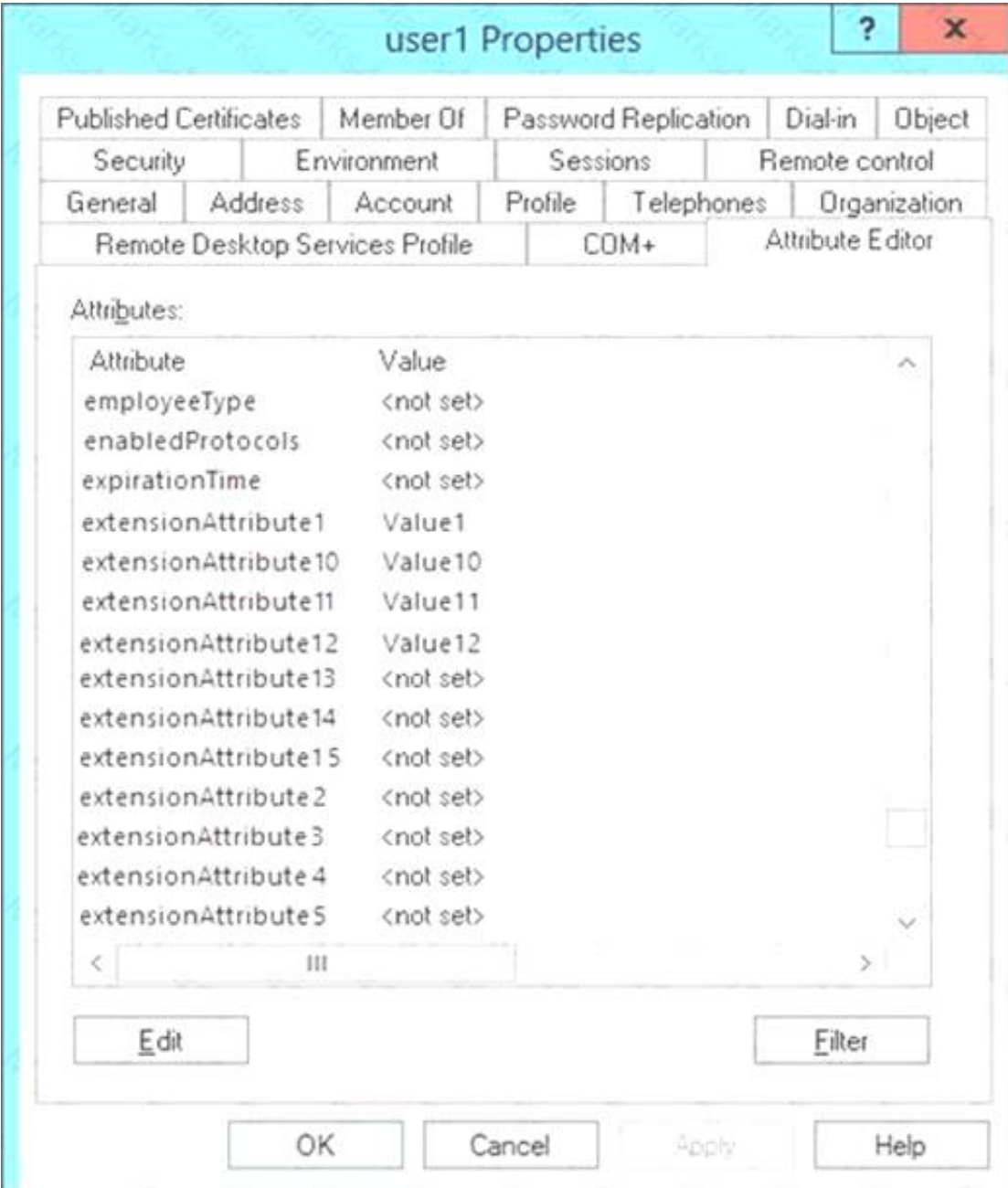
References:
https://docs.microsoft.com/en-us/deployoffice/configuration-options-for-the-office-2016-deployment-tool

NEW QUESTION 10

- (Exam Topic 1)
Your network contains an on-premises Active Directory domain that is synced to Microsoft Azure Active Directory (Azure AD) as shown in the following two exhibits.



You create a user named User1 in Active Directory as shown in the following exhibit.



For each of the following statements, select Yes if the statement is true. Otherwise, select No. NOTE: Each correct selection is worth one point.

Statements	Yes	No
The value of extensionAttribute1 is synchronized to Azure AD.	<input type="radio"/>	<input type="radio"/>
The value of extensionAttribute10 is synchronized to Azure AD.	<input type="radio"/>	<input type="radio"/>
The value of extensionAttribute11 is synchronized to Azure AD.	<input type="radio"/>	<input type="radio"/>
The value of extensionAttribute12 is synchronized to Azure AD.	<input type="radio"/>	<input type="radio"/>

- A. Mastered
- B. Not Mastered

Answer: A

Explanation:

Statements	Yes	No
The value of extensionAttribute1 is synchronized to Azure AD.	<input checked="" type="radio"/>	<input type="radio"/>
The value of extensionAttribute10 is synchronized to Azure AD.	<input checked="" type="radio"/>	<input type="radio"/>
The value of extensionAttribute11 is synchronized to Azure AD.	<input type="radio"/>	<input checked="" type="radio"/>
The value of extensionAttribute12 is synchronized to Azure AD.	<input checked="" type="radio"/>	<input type="radio"/>

NEW QUESTION 11

- (Exam Topic 1)

Your network contains an Active Directory forest. The forest contains two domains named contoso.com and adatum.com. Your company recently purchased a Microsoft 365 subscription. You deploy a federated identity solution to the environment. You use the following command to configure contoso.com for federation. Convert-MSolDomainToFederated –DomainName contoso.com In the Microsoft 365 tenant, an administrator adds and verifies the adatum.com domain name. You need to configure the adatum.com Active Directory domain for federated authentication. Which two actions should you perform before you run the Azure AD Connect wizard? Each correct answer presents part of the solution. NOTE: Each correct selection is worth one point.

- A. From Windows PowerShell, run the Convert-MSolDomainToFederated–DomainName contoso.com –SupportMultipleDomain command.

- B. From Windows PowerShell, run the New-MsolFederatedDomain-SupportMultipleDomain -DomainName contoso.com command.
- C. From Windows PowerShell, run the New-MsolFederatedDomain-DomainName adatum.com command.
- D. From Windows PowerShell, run the Update-MSOLFederatedDomain-DomainName contoso.com -SupportMultipleDomain command.
- E. From the federation server, remove the Microsoft Office 365 relying party trust.

Answer: AE

NEW QUESTION 13

- (Exam Topic 1)

You create a Microsoft 365 subscription.

You plan to deploy Microsoft Office 365 ProPlus applications to all the client computers at your company. You prepare the following XML file for the planned deployment.

```
<Configuration>
  <Add OfficeClientEdition="32"
    Channel="Broad">
    <Product ID="0365ProPlusRetail">
      <Language ID="en-us" />
    </Product>
  </Add>
  <Updates Enabled="TRUE"
    UpdatePath=""
    Channel="Targeted" />
  <Display Level="None"
    AcceptEULA="TRUE" />
</Configuration>
```

Use the drop-down menus to select the answer choice that completes each statement based on the information presented in the graphic.

NOTE: Each correct selection is worth one point.

Office 365 ProPlus feature updates will be installed [answer choice].

▼
once a month
once every six months
once a year

Office 365 ProPlus security updates will be installed [answer choice].

▼
once a month
every six months in January and July
every six months in March and September

- A. Mastered
- B. Not Mastered

Answer: A

Explanation:

References:

<https://docs.microsoft.com/en-us/deployoffice/configuration-options-for-the-office-2016-deployment-tool#update> <https://docs.microsoft.com/en-us/deployoffice/overview-of-update-channels-for-office-365-proplus>

NEW QUESTION 15

- (Exam Topic 1)

Your company has a Microsoft 365 subscription.

You plan to move several archived PST files to Microsoft Exchange Online mailboxes. You need to create an import job for the PST files.

Which three actions should you perform before you create the import job? Each correct answer presents part of the solution.

NOTE: Each correct selection is worth one point.

- A. Create a Microsoft Azure Storage account.
- B. From Security & Compliance, retrieve the SAS key.
- C. Run azcopy.exe to copy the PST files to Microsoft Azure Storage
- D. Use Microsoft Azure Storage Explorer to copy the PST files to Azure Storage.
- E. Create a PST import mapping file.

Answer: BCE

Explanation:

References:

<https://docs.microsoft.com/en-us/office365/securitycompliance/use-network-upload-to-import-pst-files>

NEW QUESTION 16

- (Exam Topic 1)

Your company has an on-premises Microsoft Exchange Server 2013 organization. The company has 100 users.

The company purchases Microsoft 365 and plans to move its entire.- infrastructure to the cloud.

The company does NOT plan to sync the on-premises Active Directory domain to Microsoft Azure Active Directory (Azure AD).

You need to recommend which type of migration to use to move all email messages, contacts, and calendar items to Exchange Online. What should you recommend?

- A. cutover migration
- B. IMAP migration
- C. remote move migration
- D. staged migration

Answer: A

Explanation:

References:
<https://docs.microsoft.com/en-us/exchange/mailbox-migration/cutover-migration-to-office-365>

NEW QUESTION 20

- (Exam Topic 1)

Note: This question is part of a series of questions that present the same scenario. Each question in the series contains a unique solution that might meet the stated goals. Some question sets might have more than one correct solution, while others might not have a correct solution.

After you answer a question in this section, you will NOT be able to return to it. As a result these questions will not appear in the review screen.

Your company has a main office and three branch offices. All the branch offices connect to the main office by using a WAN link. The main office has a high-speed Internet connection. All the branch offices connect to the Internet by using the main office connection.

Users use Microsoft Outlook 2016 to connect to 4 Microsoft Exchange Server mailbox hosted in the main office.

The users report that when the WAN link in their office becomes unavailable, they cannot access their mailbox.

You create a Microsoft 365 subscription, and then migrate all the user data to Microsoft 365.

You need to ensure that all the users can continue to use Outlook to receive email messages if a WAN link fails.

Solution: For each device, you configure an additional Outlook profile that uses IMAP. Does this meet the goal?

- A. Yes
- B. NO

Answer: B

NEW QUESTION 25

- (Exam Topic 1)

You have a Microsoft 365 subscription.

You need to prevent phishing email messages from being delivered to your organization. What should you do?

- A. From the Exchange admin center, create an anti-malware policy.
- B. From Security & Compliance, create a DLP policy.
- C. From Security & Compliance, create a new threat management policy.
- D. From the Exchange admin center, create a spam filter policy.

Answer: C

Explanation:

References:
<https://docs.microsoft.com/en-us/office365/securitycompliance/set-up-anti-phishing-policies>

NEW QUESTION 29

- (Exam Topic 1)

Your company has a Microsoft Azure Active Directory (Azure AD) tenant named contoso.onmicrosoft.com that contains a user named User1.

You suspect that an imposter is signing in to Azure AD by using the credentials of User1.

You need to ensure that an administrator named Admin1 can view all the sign in details of User 1 from the past 24 hours.

To which three roles should you add Admin1? Each correct answer presents a complete solution. NOTE: Each correct selection is worth one point.


- A. Security administrator
- B. Password administrator
- C. User administrator
- D. Compliance administrator

Answer: ABC

NEW QUESTION 31

- (Exam Topic 1)

You have a Microsoft Azure Active Directory (Azure AD) tenant named contoso.com that includes a user named User1.

You enable multi-factor authentication for contoso.com and configure the following two fraud alert settings:  Set Allow users to submit fraud alerts: On

 Automatically block users who report fraud: On

You need to instruct the users in your organization to use the fraud reporting features correctly. What should you tell the users to do? To answer, select the appropriate options in the answer area. NOTE: Each correct selection is worth one point.

A user can report fraud on her account by:

▼
Typing a special code after receiving an alert call
Sending an email message to an administrator
Using the Microsoft Authenticator app

If User1 reports fraud on his account, the account will be blocked automatically for:

▼
6 hours
1 day
7 days
90 days

- A. Mastered
B. Not Mastered

Answer: A

Explanation:

References:

<https://docs.microsoft.com/en-us/azure/active-directory/authentication/howto-mfa-mfasettings#fraud-alert>

NEW QUESTION 35

- (Exam Topic 1)

You have an on premises web application that is published by using a URL of <https://app.contoso.local>. You purchase a Microsoft 365 subscription.

Several external users must be able to connect to the web application

You need to recommend a solution for external access to the application. The solution must support multi-factor authentication.

Which two actions should you recommend? Each correct answer presents part of the solution. NOTE: Each correct selection is worth one point.

- A. From an on-premises server, install a connector, and then publish the app.
B. From the Azure Active Directory admin center, enable an Application Proxy.
C. From the Azure Active Directory admin center, create a conditional access policy.
D. From an on premises server, install an Authentication Agent.
E. Republish the web-application by using <http://app.contoso.com>

Answer: AB

Explanation:

References:

<https://docs.microsoft.com/en-us/azure/active-directory/manage-apps/application-proxy-add-on-premises-applic>

NEW QUESTION 36

- (Exam Topic 1)

Your company has a Microsoft 365 subscription.

You need to identify all the users in the subscription who are licensed for Microsoft Office 365 through a group membership. The solution must include the name of the group used to assign the license.

What should you use?

- A. the Licenses blade in the Azure portal
B. Reports in the Microsoft 365 admin center
C. Active users in the Microsoft 365 admin center
D. Report in Security & Compliance

Answer: A

NEW QUESTION 38

- (Exam Topic 1)

Your network contains an Active Directory domain named contoso.com. You have a Microsoft 365 subscription.

You have a Microsoft Azure Active Directory (Azure AD) tenant named contoso.onmicrosoft.com. You implement directory synchronization.

The developers at your company plan to build an app named App1. App1 will connect to the Microsoft Graph API to provide access to several Microsoft Office 365 services.

You need to provide the URI for the authorization endpoint that App1 must use. What should you provide?

- A. <https://login.microsoftonline.com/>
B. <https://contoso.com/contoso.onmicrosoft.com/app1>
C. <https://login.microsoftonline.com/contoso.onmicrosoft.com/>
D. <https://myapps.microsoft.com>

Answer: C

NEW QUESTION 40

- (Exam Topic 1)

Your company has a Microsoft Azure Active Directory (Azure AD) tenant named contoso.com that includes the users shown in the following table.

Name	Usage location	Membership
User1	United States	Group1, Group2
User2	<i>Not applicable</i>	Group2
User3	<i>Not applicable</i>	Group1
User4	Canada	Group1

Group2 is a member of Group1.

You assign a Microsoft Office 365 Enterprise E3 license to Group1. You need to identify how many Office 365 E3 licenses are assigned. What should you identify?

- A. 1
- B. 2
- C. 3
- D. 4

Answer: C

NEW QUESTION 41

- (Exam Topic 1)

You have an on-premises Microsoft SharePoint Server 2016 environment. You create a Microsoft 365 tenant.

You need to migrate some of the SharePoint sites to SharePoint Online. The solution must meet the following requirements:

- ☒ Microsoft OneDrive sites must redirect users to online content.
- ☒ Users must be able to follow both on-premises and cloud-based sites.
- ☒ Users must have a single SharePoint profile for both on-premises and on the cloud.

When users search for a document by using keywords, the results must include online and on-premises results. From the SharePoint Hybrid Configuration Wizard, you select the following features:

- ☒ Hybrid business to business (B2B) sites
- ☒ Hybrid OneDrive
- ☒ Hybrid Search

Which two requirements are met by using the SharePoint Hybrid Configuration Wizard features? Each correct answer presents a complete solution.

NOTE: Each correct selection is worth one point.

- A. Users must have a single SharePoint profile for both on-premises and on the cloud.
- B. OneDrive sites must redirect users to online content.
- C. Users must be able to follow both on-premises and cloud-based sites.
- D. When users search for a document by using keywords, the results must include online and on-premises results.

Answer: BD

NEW QUESTION 43

- (Exam Topic 1)

You have a Microsoft 365 subscription and a Microsoft Azure Active Directory (Azure AD) tenant named contoso.com. Contoso.com contains the users shown in the following table.

Name	Type	Role
User1	Member	<i>None</i>
User2	Member	Security administrator, Guest inviter
User3	Member	User administrator
User4	Guest	<i>None</i>

Contoso.com is configured as shown in the following exhibit.

External collaboration settings

Save Discard

Guest users permissions are limited ⓘ

Yes No

Admins and users in the guest inviter role can invite ⓘ

Yes No

Members can invite ⓘ

Yes No

Guests can invite ⓘ

Yes No

Collaboration restrictions

☒ Allow invitations to be sent to any domain (most inclusive)

☐ Deny invitations to the specified domains

☐ Allow invitations only to the specified domains (most restrictive)

You need to ensure that guest users can be created in the tenant. Which setting should you modify?

- A. Guests can invite.
- B. Guest users permissions are limited.
- C. Members can invite.
- D. Admins and users in the guest inviter role can invite.
- E. Deny invitations to the specified domains

Answer: D

Explanation:

References:

<https://docs.microsoft.com/en-us/azure/active-directory/b2b/delegate-invitations> <https://docs.microsoft.com/en-us/azure/active-directory/fundamentals/users-default-permissions>

NEW QUESTION 45

- (Exam Topic 1)

Your on-premises network contains five file servers. The file servers host shares that contain user data. You plan to migrate the user data to a Microsoft 365 subscription.

You need to recommend a solution to import the user data into Microsoft OneDrive. What should you include in the recommendation?

- A. Configure the Migrate of the OneDrive client on your Windows 10 dew
- B. Configure the Sync settings in the OneDrive admin center.
- C. Run the SharePoint Hybrid Configuration Wizard.
- D. Run the SharePoint Migration Tool.

Answer: D

Explanation:

References:

<https://docs.microsoft.com/en-us/sharepointmigration/introducing-the-sharepoint-migration-tool>

NEW QUESTION 50

- (Exam Topic 1)

Note: This question it part of a series of questions that present the same scenario. Cacti question in the series contains a unique solution that might meet the stated goals. Some question sets might have more than one correct solution, while others might not have a correct solution.

After you answer a question in this section, you will NOT be able to return to it. As a result, these questions will not appear in the review screen.

Your company has a Microsoft Office 365 tenant.

You suspect that several Office 365 features were recently updated.

You need to view a last of the features that were recently updated in the tenant. Solution: You use Message center in the Microsoft 365 admin center.

Does this meet the goal?

- A. Yes
- B. NO

Answer: A

NEW QUESTION 52

- (Exam Topic 1)

Your Network contains an on-premises Active Directory domain named contoso.local. The domain contains five domain controllers.

Your company purchases Microsoft 365 and creates a Microsoft Anne Active Directory (Azure AD) tenant named .contoso.onmicrosoft.com.

You plan to implement pass-through authentication.

You need to prepare the environment for the planned implementation of pass-through authentication. Which three actions should you perform? Each correct answer presents part of the solution.

NOTE: Each correct selection is worth one point.

- A. Modify the email address attribute for each user account.
- B. From the Azure portal, add a custom domain name.
- C. From Active Directory Domains and Trusts, add a UPN suffix.
- D. Modify the User logon name for each user account.
- E. From the Azure portal, configure an authentication method.
- F. From a domain controller, install an authentication Agent.

Answer: BCD

NEW QUESTION 54

- (Exam Topic 1)

Your company has 10,000 users who access all applications from an on-premises data center. You plan to create a Microsoft 365 subscription and to migrate data to the cloud.

You plan to implement directory synchronization.

User account and group accounts must sync to Microsoft Azure Directory (Azure AD) successfully. You discover that several user accounts fail to sync to Azure AD.

You need to identify which user accounts failed to sync. You must resolve the issue as quickly as possible. What should you do?

- A. From Active Directory Administrative Center, search for all the users, and then modify the properties of the user accounts.
- B. Run idfix.exe, and then click Complete.
- C. From Windows PowerShell, run the Start-AdSyncSyncCycle –PolicyType Delta command.
- D. Run idfix.exe, and then click Edit.

Answer: D

NEW QUESTION 59

- (Exam Topic 1)

You have a Microsoft 365 subscription that contains several Microsoft SharePoint Online sites. You discover that users from your company can invite external users to access files on the SharePoint sites. You need to ensure that the company users can invite only authenticated guest users to the sites. What should you do?

- A. From the Microsoft 365 admin center, configure a partner relationship.
- B. From SharePoint Online Management Shell, run the set-SPOSite cmdlet.
- C. From the Azure Active Directory admin center, configure a conditional access policy.
- D. From the SharePoint admin center, configure the sharing settings.

Answer: D

NEW QUESTION 64

- (Exam Topic 1)

Your company has an on-premises Microsoft Exchange Server 2016 organization and a Microsoft 365 Enterprise subscription. You plan to migrate mailboxes and groups to Exchange Online.

You start a new migration batch.

Users report low performance when they use the on-premises Exchange Server organization. You discover that the migration is causing the slow performance.

You need to reduce the impact of the mailbox migration on the end-users. What should you do?

- A. Create a mail flow rule.
- B. Configure back pressure.
- C. Modify the migration endpoint setting.
- D. Create a throttling policy.

Answer: C

Explanation:

You can reduce the maximum number of concurrent mailbox migrations.

NEW QUESTION 65

- (Exam Topic 1)

You have a Microsoft 365 subscription that contains a Microsoft Azure Active Directory (Azure AD) tenant named contoso.com. The tenant includes a user named User1.

You enable Azure AD Identity Protection.

You need to ensure that User1 can review the list in Azure AD Identity Protection of users flagged for risk. The solution must use the principle of least privilege.

To which role should you add User1?

- A. Security reader
- B. Compliance administrator
- C. Reports reader
- D. Global administrator

Answer: A

NEW QUESTION 68

- (Exam Topic 1)

You have a Microsoft 365 subscription.

A new corporate security policy states that you must automatically send DLP incident reports to the users in the legal department.

You need to schedule the email delivery of the reports. The solution must ensure that the reports are sent as frequently as possible.

How frequently can you share the reports?

- A. hourly
- B. monthly
- C. weekly
- D. daily

Answer: C

NEW QUESTION 72

- (Exam Topic 1)

Your company has a Microsoft 365 subscription.

You upload several archive PST files to Microsoft 365 by using the Security & Compliance admin center. A month later, you attempt to run an import job for the PST files.

You discover that the PST files were deleted from Microsoft 365.

What is the most likely cause of the files being deleted? More than one answer choice may achieve the goal. Select the BEST answer.

- A. The PST files were corrupted and deleted by Microsoft 365 security features.
- B. PST files are deleted automatically from Microsoft 365 after 30 days.
- C. The size of the PST files exceeded a storage quota and caused the files to be deleted.
- D. Another administrator deleted the PST files.

Answer: B

Explanation:

References:

<https://docs.microsoft.com/en-us/office365/securitycompliance/faqimporting-pst-files-to-office-365>

NEW QUESTION 74

- (Exam Topic 1)

Your network contains an Active Directory domain named .Ki.ituin.com that is synced to Microsoft Azure Active Directory (Azure AD).

The domain contains 100 user accounts.

The city attribute for all the users is set to the city where the user resides.

You need to modify the value of the city attribute to the three letter airport code of each city. What should you do?

- A. from Active Directory Administrative Center, select the Active Directory users, and then modify the Property settings.
- B. From the Microsoft 365 admin center, select the users, and then use the Bulk actions option.
- C. From Azure Cloud Shell, run the Get-AzureADUsers, and then use the Bulk actions option.
- D. From Azure Cloud Shell, run the Get-AzureADUser and set-AzureADUser cmdlets.
- E. From Windows PowerShell on a domain controller, run the Get-AzureADUser and Set-AzureADUser cmdlets.

Answer: A

NEW QUESTION 79

- (Exam Topic 1)

Note: This question is part of a series of questions that present the same scenario. Each question in the series contains a unique solution that might meet the stated goals. Some question sets might have more than one correct solution, while others might not have a correct solution.

After you answer a question in this section, you will NOT be able to return to it. As a result, these questions will not appear in the review screen.

Your company has a Microsoft Office 365 tenant.

You suspect that several Office 365 features were recently updated.

You need to view a list of the features that were recently updated in the tenant. Solution: You use Dashboard in Security & Compliance.

Does this meet the goal?

- A. Yes
- B. NO

Answer: B

NEW QUESTION 80

- (Exam Topic 2)

Note: This question is part of a series of questions that present the same scenario. Each question in the series contains a unique solution that might meet the stated goals. Some question sets might have more than one correct solution, while others might not have a correct solution.

After you answer a question in this section, you will NOT be able to return to it. As a result, these questions will not appear in the review screen.

You need to assign User2 the required roles to meet the security requirements. Solution: From the Office 365 admin center, you assign User2 the Security Reader role. From the Exchange admin center, you assign User2 the Help Desk role.

Does this meet the goal?

- A. Yes
- B. NO

Answer: B

NEW QUESTION 81

- (Exam Topic 2)

You need to Add the custom domain name* to Office 365 K> support the planned changes as quickly as possible.
What should you create to verify the domain names successfully?

- A. three alias (CNAME) record
- B. one text (TXT) record
- C. one alias (CNAME) record
- D. three text (TXT) record

Answer: D

NEW QUESTION 86

- (Exam Topic 2)

You need to meet the security requirement for the vendors. What should you do?

- A. From the Azure portal, add an identity provider.
- B. From Azure Cloud Shell, run the New-AzureADUser cmdlet and specify the –UserPrincipalName parameter.
- C. From the Azure portal, create guest accounts.
- D. From Azure Cloud Shell, run the New-AzureADUser cmdlet and specify the –UserType parameter.

Answer: C

NEW QUESTION 90

- (Exam Topic 2)

Note: This question is part of a series of questions that present the same scenario. Each question in the series contains a unique solution that might meet the stated goals. Some question sets might have more than one correct solution, while others might not have a correct solution.

After you answer a question in this section, you will NOT be able to return to it. As a result, these questions will not appear in the review screen.

You need to assign User2 the required roles to meet the security requirements.

Solution: From the Office 365 admin center, you assign User2 the Security Reader role. From the Exchange admin center, you assign User2 the Compliance Management role.

Does this meet the goal?

- A. Yes
- B. NO

Answer: A

NEW QUESTION 94

- (Exam Topic 2)

You need to meet the security requirement for Group1. What should you do?

- A. Configure all users to sign in by using multi-factor authentication.
- B. Modify the properties of Group1.
- C. Assign Group1 a management role.
- D. Modify the Password reset properties of the Azure AD tenant.

Answer: D

Explanation:

References:

<https://docs.microsoft.com/en-us/azure/active-directory/authentication/concept-sspr-howitworks>

NEW QUESTION 96

- (Exam Topic 2)

Note: This question is part of a series of questions that present the same scenario. Each question in the series contains a unique solution that might meet the stated goals- Some question sets might have more than one correct solution, while others might not have a correct solution.

After you answer a question in this section, you will NOT be able to return to it. As a result, these questions will not appear in the review screen.

You need to assign User2 the required roles to meet the security requirement.

Solution: From the Office 365 admin center, you assign User2 the Records Management role. From the Exchange 3dmm center, you assign User2 the Help Desk role.

Does that meet the goal?

- A. Yes
- B. NO

Answer: B

NEW QUESTION 98

- (Exam Topic 3)

You need to create the UserLicenses group. The solution must meet the security requirements.

Which group type and control method should you use? To answer, select the appropriate options in the answer area.

NOTE: Each correct selection is worth one point.

Answer Area

Group type:

▼
Distribution list
Office 365 group
Security group

Control method:

▼
a conditional access policy
a retention policy
an access review
an alert policy

- A. Mastered
- B. Not Mastered

Answer: A

Explanation:

Answer Area

Group type:

▼
Distribution list
Office 365 group
Security group

Control method:

▼
a conditional access policy
a retention policy
an access review
an alert policy

NEW QUESTION 101

- (Exam Topic 3)
Which role should you assign to User1?

- A. Security Administrator
- B. Records Management
- C. Security Reader
- D. Hygiene Management

Answer: C

NEW QUESTION 103

- (Exam Topic 3)
Which migration solution should you recommend for Project1?

- A. From Exchange Online PowerShell, run the New-MailboxImportRequest cmdlet.
- B. From Exchange Online PowerShell, run the New-MailboxExportRequest cmdlet.
- C. From the Microsoft 365 admin center, start a data migration and click Upload PSST as the data service.
- D. From the Exchange admin center, start a migration and select Remote move migration

Answer: D

NEW QUESTION 107

.....

Thank You for Trying Our Product

We offer two products:

1st - We have Practice Tests Software with Actual Exam Questions

2nd - Questions and Answers in PDF Format

MS-100 Practice Exam Features:

- * MS-100 Questions and Answers Updated Frequently
- * MS-100 Practice Questions Verified by Expert Senior Certified Staff
- * MS-100 Most Realistic Questions that Guarantee you a Pass on Your FirstTry
- * MS-100 Practice Test Questions in Multiple Choice Formats and Updatesfor 1 Year

100% Actual & Verified — Instant Download, Please Click
[Order The MS-100 Practice Test Here](#)