

MS-300 Dumps

Deploying Microsoft 365 Teamwork

<https://www.certleader.com/MS-300-dumps.html>



NEW QUESTION 1

- (Exam Topic 1)

You have a Microsoft 365 tenant that uses a Microsoft Azure Active Directory (Azure AD) tenant named contoso.com. You need to allow users to sync Microsoft OneDrive for business only from the computers in contoso.com.

Which Power Shell cmdlet should you run?

- A. Add-SPProfileSyncConnection
- B. Set-SPOUser
- C. Set-MSOLDirSyncEnabled+
- D. Set-SPOTenant
- E. Set-SPOTenantSyncClientRestriction

Answer: E

Explanation:

References:

<https://docs.microsoft.com/en-us/powershell/module/sharepoint-online/set-spotenantsyncclientrestriction?view=>

NEW QUESTION 2

- (Exam Topic 1)

You have a Microsoft 56S subscription.

You need to ensure that mm can sync files only by using the Microsoft OneDrive Next Generation Sync Client. How should you complete the command? To answer, select the appropriate options in the answer area.

NOTE: Each correct selection is worth one point.

<div><div></div><div>Set-SPOSite</div><div>Set-SPOTenant</div><div>Set-SPOTenantSyncClientRestriction</div></div>	<div><div></div><div>-BlockMacSync</div><div>-Enable</div><div>-GrooveBlockOption</div></div>	<div><div></div><div>HardOptin</div><div>OptOut</div><div>SoftOptin</div></div>
---	---	---

- A. Mastered
- B. Not Mastered

Answer: A

Explanation:

Set-SPOTenantSyncClientRestriction -GrooveBlockOption "HardOptIn"

<https://docs.microsoft.com/en-us/powershell/module/sharepoint-online/set-spotenantsyncclientrestriction?view=>

NEW QUESTION 3

- (Exam Topic 1)

You manage multiple Microsoft SharePoint Online sites.

You have a CSV file named Groups.csv that contains the following data. Site, Group, Permissions

<https://contoso1.sharepoint.com/sites/sitea>, Project Leads, Full Control <https://contoso1.sharepoint.com/sites/siteb>, Auditors, View Only

You have a CSV file named Users.csv that contains the following data. Group, LoginName, Site

Project Leads, Lead1, <https://contoso1.sharepoint.com/sites/sitea> Auditors, Auditor1, <https://contoso1.sharepoint.com/sites/siteb>

You need to create multiple SharePoint groups and add the users to the groups.

How should you complete the command? To answer, select the appropriate options in the answer area. NOTE: Each correct selection is worth one point.

```
Import-Csv Groups.csv | ForEach-Object {  


Get-SPOSiteGroup



New-SPGroup



New-SPOSiteGroup

 -Site $_.Site)  
  
    $_.Group .PermissionLevels 

$_Permissions



(Get-SPOSiteGroup -Group $_Permissions)



[Microsoft.SharePoint.Client.PermissionKind]: $_Permissions

 -Site $_.Site)  
  
    Import-Csv Users.csv | foreach-Object {  


Add-SPOUser



Get-SPOUser



New-SPUser

 -Group  
  
        $_.Group -loginName $_.LoginName -Site $_.Site)  
    }
```

- A. Mastered
- B. Not Mastered

Answer: A

Explanation:

References:

<https://docs.microsoft.com/en-us/office365/enterprise/powershell/create-sharepoint-sites-and-add-users-with-po>

NEW QUESTION 4

- (Exam Topic 1)
Your company creates a custom Microsoft SharePoint list named List1. List1 is exposed by using a web part named WebPart1 in a site named Company Portal. All users at the company have read access to Company Portal.
You need to configure SharePoint Online to meet the following requirements:

- Managers must see List 1 when they open Company Portal
- All other users must not see List1 from Company Portal but must be able to navigate to List1.

Which three actions should you perform in sequence? To answer, move the appropriate actions from the list of actions to the answer area and arrange them in the correct order.

Actions	Answer Area
Configure audience targeting for List1.	
Create a user profile property and set the property for the managers.	
Configure audience targeting for WebPart1.	
Create an audience that uses a rule.	
Assign the managers the Contributors role for Company Portal.	

- A. Mastered
- B. Not Mastered

Answer: A

Explanation:

Actions	Answer Area
Configure audience targeting for List1.	Create a user profile property and set the property for the managers.
Create a user profile property and set the property for the managers.	Create an audience that uses a rule.
Configure audience targeting for WebPart1.	Configure audience targeting for WebPart1.
Create an audience that uses a rule.	
Assign the managers the Contributors role for Company Portal.	

NEW QUESTION 5

- (Exam Topic 1)
You work for a company named Contoso,Ltd. Contoso has a Microsoft 365 subscription.
You need to prevent the word Contoso from affecting the ranking of search results.
What should you select from the search administration page, in the SharePoint admin center?

- A. Manage Result Souk.
- B. Manage Search Dictionaries
- C. Manage Search Schema
- D. Manage Query Rules

Answer: D

Explanation:

References:
<https://docs.microsoft.com/en-us/sharepoint/manage-query-rules>

NEW QUESTION 6

- (Exam Topic 1)
You have a Microsoft SharePoint Online subscription. The subscription has a modern site collection named Corporate that contains company data and a modern site collection named App Catalog for managing third-party apps.
You have the following requirements for the installation and customization of apps:

- Users in an Active Directory group named Group1 must be able to approve the installation of SharePoint apps in the Corporate site collection
- Users in an Active Directory group named Group2 must be able to change the stylesheet of the sites in the Corporate site collection

You need to configure the site collection permissions to meet the requirements. The solution must use the principle of least privilege.
To which SharePoint group should you add Group1 and Group2? To answer, drag the appropriate SharePoint groups to the correct groups. Each SharePoint

group may be used once, more than once, or not at all. You may need to drag the split bat between panes or scroll to view content.

NOTE: Each correct selection is worth one point.

SharePoint Groups	Answer Area
Approves in App Catalog	Group1: <input type="text"/>
Approvers in Corporate	Group2: <input type="text"/>
Designers in App Catalog	
Designers in Corporate	
Site collection administrators in App Catalog	
Site collection administrators in Corporate	

- A. Mastered
- B. Not Mastered

Answer: A

Explanation:

References:

<https://docs.microsoft.com/en-us/sharepoint/request-app-installation-permissions> <https://docs.microsoft.com/en-us/sharepoint/default-sharepoint-groups>

NEW QUESTION 7

- (Exam Topic 1)

You have a Microsoft 365 subscription.

A user experiences issues accessing Microsoft Teams from Internet Explorer. When the user attempts to sign in from Internet Explorer, the web browser enters a loop and the user is unable to sign in.

You need to resolve the issue. What should you do?

- A. To Internet Explorer, add the following sites as trusted sites: <https://admin.microsoft.com> and https://*.teams.microsoft.com
- B. To Internet Explorer, add the following sites as trusted sites: <https://login.microsoftonline.com> and https://*.teams.microsoft.com
- C. Start Internet Explorer by using InPrivate Browsing.
- D. Clear the browsing history and restart Internet Explorer.

Answer: B

NEW QUESTION 8

- (Exam Topic 1)

Your company has a Microsoft 365 subscription.

The company plans to use Office 365 groups and Microsoft Yammer. However, there might be users who do not have a corresponding Yammer identity.

You need to verify which users are only Yammer users. The solution must minimize administrative effort. What should you do?

- A. Export the users from Yammer
- B. Export the active users from Microsoft 365. Compare the user names.
- C. Run the Get-TeamsUser cmdlet and filter the results by GroupId.
- D. Run the Get-MSOLUser cmdlet and filter the results by License.
- E. From the Microsoft 365 admin center, view the usage reports.

Answer: D

NEW QUESTION 9

- (Exam Topic 1)

Your company has a Microsoft SharePoint Online subscription.

You use a Document Type term set to tag documents. All existing terms were created in English. The company opens a new office in Mexico.

You need to ensure that the tags are available in Spanish automatically.

Which three actions should you perform in sequence from the term Store management tool? To answer, move the appropriate actions from the answer area and arrange them in the correct order.

Actions	Answer Area
Select Translate from English to Spanish.	
Create a translation package.	
Change the default language to Spanish.	
Change the web browser language from English to Spanish.	
Add Spanish to the Working languages section.	
Enable Machine translation for the term set.	

- A. Mastered
- B. Not Mastered

Answer: A

Explanation:

Actions	Answer Area
Select Translate from English to Spanish.	Create a translation package.
Create a translation package.	
Change the default language to Spanish.	Add Spanish to the Working languages section.
Change the web browser language from English to Spanish.	
Add Spanish to the Working languages section.	
Enable Machine translation for the term set.	Enable Machine translation for the term set.

NEW QUESTION 10

- (Exam Topic 1)

You have a Microsoft SharePoint Online site collection named Sales. You have an external user named GuestUser1 who has guest access to the Sales site collection.

You need to ensure that GuestUser1 can create additional subsites. The solution must use the principle of least privilege.

What is the best way to achieve the goal? More than one answer choice may achieve the goal. Select the BEST answer.

- A. Add GuestUser1 to the Members group of the Sales site collection
- B. Assign a SharePoint Online Plan1 license to GuestUser1
- C. Assign GuestUser1 the SharePoint administrator role
- D. Add GuestUser1 to the Owners group of the Sales site collection

Answer: D

NEW QUESTION 10

- (Exam Topic 1)

You have a Microsoft 365 subscription.

You need to ensure that users accessing files in Microsoft SharePoint Online from an unmanaged device can only view the files in a browser.

How should you complete the command? To answer, select the appropriate options in the answer area. NOTE: Each correct selection is worth one point.

Set-SPOSite	-ConditionalAccessPolicy	AllowFullAccess
Set-SPOTenant	-PermissiveBrowserFileHandlingOverride	AllowLimitedAccess
Set-SPOTenantCdnPolicy	-SharingDomainRestrictionMode	BlockAccess

- A. Mastered
- B. Not Mastered

Answer: A

Explanation:

References:

<https://docs.microsoft.com/en-us/sharepoint/control-access-from-unmanaged-devices#limit-access-using-powers>

NEW QUESTION 15

- (Exam Topic 1)

Note: This question is part of a series of questions that present the same scenario. Each Question In the series central is a unique solution that might meet the stated goals. Some question sets might have more than one correct solution, while others might not have a correct solution.

After you answer a Question in there section, you will NOT be able to return to it- As a result, these Questions will not appear m the review screen.

The company has 1,000 users.

You recently asked all the users to store content m Microsoft OneDrive for Business. You need to identify how many users are activity using OnlineDrive for Business. Solution: From the Microsoft 365 admin center, you view the usage reports.

Does this meet the goal?

A. Yes

B. No

Answer: A

Explanation:

References:

<https://docs.microsoft.com/en-us/graph/api/resources/onedrive-usage-reports>

NEW QUESTION 16

- (Exam Topic 1)

You have a Microsoft 365 subscription.

You need to ensure that users can use a fingerprint instead of a passcode on IOS devices to access data in Microsoft OneDrive for Business.

Which four actions should you perform in sequence? To answer, move the appropriate actions from the list of actions to the answer area and arrange them in the correct order.

Actions	Answer Area
Select Require app passcode.	
Select Require complex passcode.	
Open the OneDrive admin center.	
Configure the Device access settings.	
Select the Encrypt app data when device is locked.	
Open the Azure Active Directory admin center.	
Select Allow fingerprint instead of passcode.	
Open the Microsoft 365 admin center.	

A. Mastered

B. Not Mastered

Answer: A

Explanation:

Actions	Answer Area
Select Require app passcode.	Open the OneDrive admin center.
Select Require complex passcode.	Configure the Device access settings.
Open the OneDrive admin center.	Select Require app passcode.
Configure the Device access settings.	Select Allow fingerprint instead of passcode.
Select the Encrypt app data when device is locked.	
Open the Azure Active Directory admin center.	
Select Allow fingerprint instead of passcode.	
Open the Microsoft 365 admin center.	

NEW QUESTION 20

- (Exam Topic 1)

You need to preserve data that is stored in Microsoft OneDrive for Business and contains Personally Identifiable Information (PII). The data must be deleted after seven years.

What should you create?

- A. an Azure Information Protection policy
- B. a data loss prevention (DLP) policy
- C. A data governance retention policy
- D. an Information Rights Management (IRM) policy

Answer: C

Explanation:

References:

<https://docs.microsoft.com/en-us/office365/securitycompliance/retention-policies>

NEW QUESTION 21

- (Exam Topic 1)

Note: This question is part of a series of questions that present the same scenario. Each Question In the series central is a unique solution that might meet the stated goals. Some question sets might have more than one correct solution, while others might not have a correct solution.

After you answer a Question in there section, you will NOT be able to return to it- As a result, these Questions will not appear m the review screen.

You have a Microsoft 365 subscription. You have a distribution list named Finance.

You need to ensure that you can use finance to create a team in Microsoft Teams. Solution: From the Exchange admin center, you create a new migration batch. Does this meet the goal?

- A. Yes
- B. No

Answer: B

NEW QUESTION 26

- (Exam Topic 1)

You work for a Canadian company named Contoso.Ltd. Contoso has a Microsoft 36S subscription.

Contoso discovers that some users share Canadian Personally Identifiable Information (PII) data with external users.

You need to notify users and administrators when sensitive information is shared with internal or external users.

What should you create?

- A. a Microsoft Azure Information Protection policy
- B. a data loss prevention (DLP) policy
- C. a data governance policy
- D. a sensitivity label policy

Answer: B

NEW QUESTION 30

- (Exam Topic 1)

Your company has a Microsoft 365 subscription. The company plans to implement Microsoft Teams.

You need to ensure that users can add only specific external apps to Teams.

How should you area.

How should you configure each setting? To answer, select the appropriate options, in the answer area. NOTE: Each correct selections is worth one point.

The screenshot shows three settings in the Microsoft Teams admin center:

- Allow external apps in Microsoft Teams:** A dropdown menu with 'On' and 'Off' options. 'On' is selected.
- Allow sideloading of external apps:** A dropdown menu with 'On' and 'Off' options. 'Off' is selected.
- Enable new external apps by default:** A dropdown menu with 'On' and 'Off' options. 'Off' is selected.

- A. Mastered
- B. Not Mastered

Answer: A

Explanation:

References:

<https://docs.microsoft.com/en-us/microsoftteams/admin-settings>

NEW QUESTION 35

- (Exam Topic 1)

Note: This question is a part of a series of questions that presents the same scenario. Each question in the series contains a unique solution that might meet the stated goals. Some question sets might have more than one correct solution, while others might not have a correct solution.

After you answer a question in this section, you will NOT be able to return to it. As a result, these questions will not appear in the review screen.

Your company has a Microsoft SharePoint Online subscription. The company purchases a new add-in for Microsoft Excel. You need to deploy the add-in to all users.

Solution: From the App Catalog, you upload the add-in to the Microsoft Office Add-ins. Does this meet the goal?

- A. Yes
- B. NO

Answer: B

NEW QUESTION 37

- (Exam Topic 1)

You have a Microsoft 365 subscription for cootoso.com.

You need to prevent users from using Microsoft Skype for Business to communicate with users in litewareinc.com.

What should you do from the Microsoft Teams & Skype for Business Admin Center?

- A. Create a new meeting policy
- B. Modify the External access settings.
- C. Create a new messaging policy
- D. Turn off Guest access.

Answer: B

Explanation:

<https://docs.microsoft.com/en-us/microsoftteams/manage-external-access>

NEW QUESTION 41

- (Exam Topic 1)

Your company is moving an on premises Microsoft SharePoint deployment to SharePoint Online.

The on-premises SharePoint deployment uses structural navigation with security trimming. After testing the same navigation approach in SharePoint Online, the company identifies the following requirements for the SharePoint Online deployment:

- Display an access denied page when users lack permissions to see a given page.
- Populate the navigation links based on a prede fined company taxonomy.
- Display the same set of links to all users.

Which navigation approach should you recommend?

- A. search-driven navigation with security trimming.
- B. structural navigation without security trimming.
- C. a Custom navigation provider with security trimming.
- D. managed navigation without security trimming.

Answer: D

NEW QUESTION 46

- (Exam Topic 1)

Your company has 200 remote users have laptops that run Windows 10. The users store files in Microsoft OneDrive for Business. You are configuring new Laptops that will be- deployed to the users. The new laptops have smaller hard than the current laptops. You need to minimize the amount of disk space used b by One Drive on the new laptops. Which Group Policy setting should you configure?

- A. Set the default location for the OneDrive folder.
- B. Prevent users from synchronizing personal OneDrive accounts
- C. Enable OnDrive Files On-demand
- D. Set the maximum percentage of uploading bandwidth that OneDrive.exe uses.

Answer: C

NEW QUESTION 49

- (Exam Topic 1)

You have a Microsoft 365 subscription.

You need to prevent users from using third-party cloud storage in Microsoft Teams.

Which settings should you configure from the Microsoft Teams & Skype for Business Admin Center?

- A. Teams settings
- B. Messaging policies
- C. Meeting policies
- D. Services & add-ins
- E. Manage teams

Answer: A

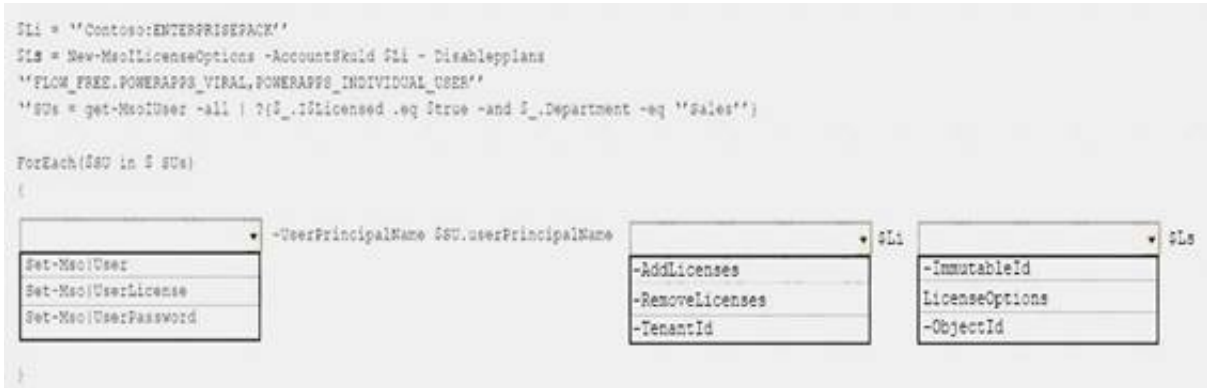
NEW QUESTION 50

- (Exam Topic 1)

You haw d Microsoft 365 subscription

You need to remove the Microsoft Flow license and the Microsoft PowerApps license for the users in the sales department

How should you complete the PowerShell script? To answer, select the appropate options in the answer area. NOTE: Each correct selection is worth one point



- A. Mastered
- B. Not Mastered

Answer: A

Explanation:

References:

<https://docs.microsoft.com/en-us/office365/enterprise/powershell/disable-access-to-services-with-office-365-po>

NEW QUESTION 55

- (Exam Topic 1)

Your company plans to deploy Microsoft SharePoint Online.

You create 15 modern team sites based on the organizational structure of the company. You need to ensure that the site collections share common navigation and branding. Which PowerShell cmdlet should you run?

- A. Set-SPOHubSite
- B. Upgrade-SPOSite
- C. Set-SPOSiteGroup
- D. Register-SPOHubSite

Answer: D

NEW QUESTION 56

- (Exam Topic 1)

Note: This question is a part of a series of questions that presents the same scenario. Each question in the series contains a unique solution that might meet the stated goals. Some question sets might have more than one correct solution, while others might not have a correct solution.

After you answer a question in this section, you will NOT be able to return to it. As a result, these questions will not appear in the review screen.

You have a Microsoft 365 subscription that uses an Azure Active Directory (Azure AD) tenant named contoso.com.

You need to prevent guest users in the tenant from using cameras during Microsoft Teams meetings. Solution: From the Microsoft Teams admin center, you modify the External sharing settings.

Does this meet the goal?

- A. Yes
- B. No

Answer: B

Explanation:

References:

<https://docs.microsoft.com/en-us/MicrosoftTeams/set-up-guests>

NEW QUESTION 59

- (Exam Topic 1)

Your company has a Microsoft Office 365 subscription. The company uses Microsoft Stream. You need to embed a video created in Stream into a Microsoft SharePoint communication site.

Which three actions should you perform in sequence? To answer, move the appropriate actions from the list of actions to the answer area and arrange them in the correct order.

Actions

Answer Area

Add a Microsoft Stream web part to a page.

Set Source to Video.

Add a Link web part.

Paste the URL in the address box.

Set Source to Channel.

- A. Mastered
B. Not Mastered

Answer: A

Explanation:

References:

<https://docs.microsoft.com/en-us/stream/embed-video-sharepoint>

NEW QUESTION 64

- (Exam Topic 1)

Your network contains an Active Directory domain named contoso.com. You plan to implement Microsoft OneDrive for Business for all the users in your company. The domain administrator needs to manage the OneDrive settings centrally.

Which three actions should you instruct the administrator to perform in sequence? To answer, move the appropriate actions from the list of actions to the answer area and arrange them in the correct order.

Actions	Answer Area
Configure settings by using a Group Policy object (GPO).	
Copy OneDrive.adml and OneDrive.admx from the Installation folder to the \\Contoso.com\\sysvol\\domain\\Policies\\PolicyDefinitions folder	
Go to %localappdata\\Microsoft\\OneDrive\\{BuildNumber}\\adm	
Go to %ProgramFiles%\\Microsoft\\OneDrive\\.	
Create a registry file and distribute the file to all the users.	

- A. Mastered
B. Not Mastered

Answer: A

Explanation:

Actions	Answer Area
Configure settings by using a Group Policy object (GPO).	Go to %localappdata\\Microsoft\\OneDrive\\{BuildNumber}\\adm
Copy OneDrive.adml and OneDrive.admx from the Installation folder to the \\Contoso.com\\sysvol\\domain\\Policies\\PolicyDefinitions folder	Copy OneDrive.adml and OneDrive.admx from the Installation folder to the \\Contoso.com\\sysvol\\domain\\Policies\\PolicyDefinitions folder
Go to %localappdata\\Microsoft\\OneDrive\\{BuildNumber}\\adm	
Go to %ProgramFiles%\\Microsoft\\OneDrive\\.	Configure settings by using a Group Policy object (GPO).
Create a registry file and distribute the file to all the users.	

NEW QUESTION 65

- (Exam Topic 1)

You have a Microsoft 365 subscription.

You need to prevent all users except for a user named User 1 from uploading video to Microsoft Stream channels and creating stream channels. User 1 must be able to create a channel and upload video to the created channel.

Which two actions should you perform? Each correct answer presents part of the solution. NOTE: Each correct selection is worth one point.

- A. Add User1 to the Office 365 group associated to tin- channel.
B. Turn on Restrict video uploads and add the Office 365 group associated to the channel as an unrestricted user.
C. Turn on Restrict companywide channel creation and add the Office 365 group associate to the channel as an unrestricted user.
D. Turn on Restrict companywide channel creation and add User1 as add unrestricted user.
E. Turn on Restrict video uploads and add User1 as an unrestricted.

Answer: DE

Explanation:

References:

<https://docs.microsoft.com/en-us/stream/restrict-companywide-channels> <https://docs.microsoft.com/en-us/stream/restrict-uploaders>

NEW QUESTION 69

- (Exam Topic 1)

You have a Microsoft 365 subscription.

You use Microsoft Stream to upload internal videos.

You need to add the videos to a Microsoft Teams channel.

Which three actions should you perform in sequence? To answer, move the appropriate actions from the list of actions to the answer area and arrange them in the correct order.

Actions	Answer Area
From the Stream video page, open the Share tab, and then copy the direct link to the video.	
From the Stream tab, select Channel . Paste the URL and select Save .	
From the Stream video page, open the Share tab, select the Embed tab, and copy the embed code.	
Add a new tab in teams and select Website . Paste the URL of the video and select Save .	
Add a new tab in Teams and select Stream .	
From the Stream tab, select Video . Paste the URL and select Save .	

A. Mastered

B. Not Mastered

Answer: A

Explanation:

Actions	Answer Area
From the Stream video page, open the Share tab, and then copy the direct link to the video.	From the Stream video page, open the Share tab, and then copy the direct link to the video.
From the Stream tab, select Channel . Paste the URL and select Save .	
From the Stream video page, open the Share tab, select the Embed tab, and copy the embed code.	Add a new tab in Teams and select Stream .
Add a new tab in teams and select Website . Paste the URL of the video and select Save .	
Add a new tab in Teams and select Stream .	
From the Stream tab, select Video . Paste the URL and select Save .	From the Stream tab, select Channel . Paste the URL and select Save .

NEW QUESTION 70

- (Exam Topic 1)

Note: This question is part of a series of questions that present the same scenario. Each Question In the series central is a unique solution that might meet the stated goals. Some question sets might have more than one correct solution, while others might not have a correct solution.

After you answer a Question in there section, you will NOT be able to return to it- As a result, these Questions will not appear in the review screen.

Your company has a Microsoft 365 subscription. The company has 1.000 users.

You recently asked all the users to store content in Microsoft OneDrive for Business. You need to identify how many users are activity using OnlineDrive for Business. Solution: from the Microsoft 365 admin center, you view the service health.

Does this meet the goal?

A. Yes

B. No

Answer: A

NEW QUESTION 73

- (Exam Topic 1)

Note: This question is a part of a series of questions that presents the same scenario. Each question in the series contains a unique solution that might meet the stated goals. Some question sets might have more than one correct solution, while others might not have a correct solution.

After you answer a question in this section, you will NOT be able to return to it. As a result, these questions will not appear in the review screen.

You have a Microsoft 365 subscription that uses an Azure Active Directory (Azure AD) tenant named contoso.com.

You need to prevent guest users in the tenant from using cameras during Microsoft Teams meetings. Solution: From the Azure Active Directory admin center, you modify the External collaboration settings. Does this meet the goal?

A. Yes

B. No

Answer: B

Explanation:

References:

<https://www.petri.com/azure-active-directory-external-collaboration-policy>

NEW QUESTION 75

- (Exam Topic 1)

Note: This question is a part of a series of questions that presents the same scenario. Each question in the series contains a unique solution that might meet the stated goals. Some question sets might have more than one correct solution, while others might not have a correct solution.

After you answer a question in this section, you will NOT be able to return to it. As a result, these questions will not appear in the review screen.

You have a Microsoft 365 subscription that uses an Azure Active Directory (Azure AD) tenant named contoso.com.

You need to prevent guest users in the tenant from using cameras during Microsoft Teams meetings. Solution: From the Microsoft Teams admin center, you modify the Guest access settings.

Does this meet the goal?

A. Yes

B. No

Answer: A

Explanation:

References:

<https://docs.microsoft.com/en-us/MicrosoftTeams/set-up-guests>

NEW QUESTION 80

- (Exam Topic 1)

You have a Microsoft 365 subscription.

You configure an App Catalog. You add several apps to the App Catalog.

Users report that when they attempt to add apps to sites, the new apps fail to appear. You need to ensure that the users can add the apps to the sites.

Which three actions should you perform in sequence? To answer, move the appropriate actions from the list of actions to the answer area and arrange them in the correct order.

Actions	Answer Area
Run the New-Filecatalog cmdlet.	
Select the app.and then select Open .	
Select the Featured check box in the App settings.	
Open the App catalog site, select the Apps for SharePoint list, and then select new item .	
Run the Install-SPApp cmdlet.	
Select the Enabled check box in the app settings.	

A. Mastered

B. Not Mastered

Answer: A

Explanation:

Actions	Answer Area
Run the New-Filecatalog cmdlet.	Open the App catalog site, select the Apps for SharePoint list, and then select new item .
Select the app.and then select Open .	Select the app.and then select Open .
Select the Featured check box in the App settings.	
Open the App catalog site, select the Apps for SharePoint list, and then select new item .	Select the Enabled check box in the app settings.
Run the Install-SPApp cmdlet.	
Select the Enabled check box in the app settings.	

NEW QUESTION 81

- (Exam Topic 1)

You have a Microsoft 365 subscription that uses Microsoft Teams. You purchase an app named App1 from the Teams store. You need to add App1 to the Teams client for several users.

Which two actions should you perform in the Microsoft Teams admin center? Each correct answer presents part of the solution.
NOTE: Each correct selection is worth one point.

- A. From App Setup policies, create a new app setup policy
- B. From Org-wide settings, modify the Devices settings
- C. From App Setup policies, modify the global app setup policy
- D. From the properties of the users, edit the assigned policies
- E. From Meetings, modify the Network settings

Answer: AD

Explanation:

References:
<https://docs.microsoft.com/en-us/microsoftteams/teams-app-setup-policies>

NEW QUESTION 86

- (Exam Topic 1)

Your company has a Microsoft SharePoint Online subscription. The company develops a new SharePoint app.

You need to ensure that the app is available automatically to users in a specific site collection without requiring the users to install the app.

You create an App Catalog site collection.

Which three actions should you perform in sequence next? To answer, move the appropriate actions from the list of actions to the answer area and arrange them in the correct order.

Actions	Answer Area
Upload the app to the App Catalog site.	
On the Manage App Deployments page, configure the site collection.	
In the managed Paths section, configure the site collection.	
Add the app to the App Catalog site.	
Create a subsite in the App Catalog site collection.	

- A. Mastered
- B. Not Mastered

Answer: A

Explanation:

References:
https://docs.microsoft.com/en-us/sharepoint/use-app-catalog#deploy_a_custom

NEW QUESTION 88

- (Exam Topic 1)

You have a Microsoft SharePoint Online subscription. You need to ensure that Microsoft PowerPoint files appear at the top of search results.

Which two actions should you perform? Each correct answer presents part of the solution.

NOTE: Each correct selection is worth one point.

- A. Set a query transform of {SearchBoxQuery}Filetype=pptx contentclass:STS_Web
- B. Set a query transform of {SearchTerms}Filetype=pptx
- C. Create a new result source
- D. Create a new query rule
- E. Create a new Search dictionary

Answer: BD

NEW QUESTION 92

- (Exam Topic 1)

You have a Microsoft 365 subscription.

You have the following requirements for Microsoft OneDrive for Business and Microsoft SharePoint Online:

- When content is shared with external user, the users must sign in before they can access the content.
- When OneDrive for Business content is shared with external users, the users must have a guest account in Microsoft Azure Directory (Azure AD).

You need to configure external sharing to meet the requirements.

Which option should you configure for each setting? To answer, drag the appropriate options to the correct settings. Each option may be used once, more than once, or not at all. You may need to drag the split bar between panes or scroll to view content.

NOTE: correct selection is worth one point.

Option	Answer Area
Anyone	External Sharing setting for SharePoint: <input type="text" value="Option"/>
Existing external users	External sharing setting for OneDrive: <input type="text" value="Option"/>
New and existing external users	
Only people in your organization	

- A. Mastered
B. Not Mastered

Answer: A

Explanation:

References:

<https://docs.microsoft.com/en-us/onedrive/manage-sharing>

NEW QUESTION 95

- (Exam Topic 1)

You have a Microsoft 365 subscription.

All users have computers that run Windows 10 and have Microsoft Teams installed. A user reports the following issues:

- The user selection process takes too long to complete.
- The Teams client crashes and restarts automatically.
- Users lose connections during screen sharing.

You need to view the Teams debug logs to troubleshoot the issues. What should you do?

- A. Right-click the Microsoft Teams icon in the application tray, and then select Get log
B. Open Logs.txt in the %Appdata%\Microsoft\Teams\folder.
C. From the Teams client, select Ctrl + Alt + Shift + 1. Open the ETL files in the %Appdata%\Microsoft\Teams\folder.
D. Right-click the Teams icon in the application tray, and then select Get log
E. Open the log files in the % Userprofile%\Downloads\folder.
F. From Event Viewer, open the System log and filter the log for a keyword of MSTeams.

Answer: B

Explanation:

References:

<https://docs.microsoft.com/en-us/microsoftteams/log-files>

NEW QUESTION 97

- (Exam Topic 1)

You have a Microsoft SharePoint Online subscription.

You need to create a PowerShell script to retrieve planned changes and service information from Microsoft 365.

How should you complete the PowerShell script? To answer, select the appropriate options in the answer area. NOTE: Each correct selection is worth one point.

```
Install-Module -Name
```

AzureAD
Microsoft.Online.Sharepoint.PowerShell
O365ServiceCommunications

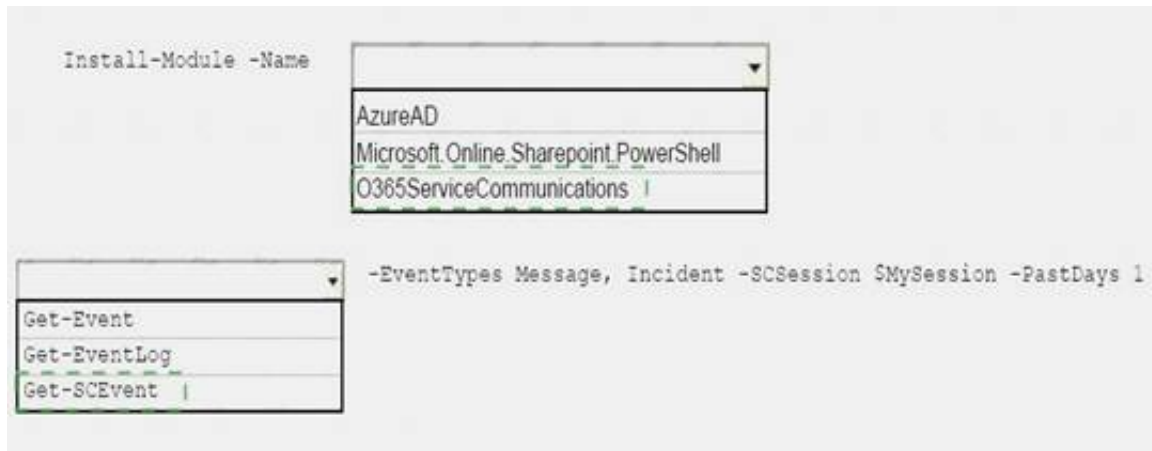
```
-EventTypes Message, Incident -SCSession $MySession -PastDays 1
```

Get-Event
Get-EventLog
Get-SCEvent

- A. Mastered
B. Not Mastered

Answer: A

Explanation:



NEW QUESTION 98

- (Exam Topic 1)

Your company is switching from Microsoft Skype for Business to Microsoft Teams.

You need to verify how many users in Teams are active this month, and how many Teams users were active the previous month.

Which report should you use?

- A. Active users(%)
- B. Active users
- C. MOMReturningUsers(%)
- D. MOMReturingUsers

Answer: D

Explanation:

References:

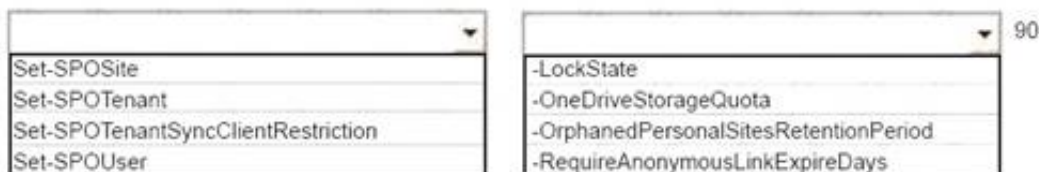
<https://docs.microsoft.com/en-us/office365/admin/usage-analytics/usage-analytics-data-model?view=o365-worl>

NEW QUESTION 100

- (Exam Topic 2)

You need to configure retention for OneDrive. The solution must meet the technical requirements. How should you complete the command? To answer, select the appropriate options in the answer area.

NOTE: Each correct selection is worth one point.



- A. Mastered
- B. Not Mastered

Answer: A

Explanation:

References:

<https://docs.microsoft.com/en-us/powershell/module/sharepoint-online/set-spotenant?view=sharepoint-ps>

NEW QUESTION 101

- (Exam Topic 2)

You need to confirm whether the performance issues experienced by the HR department site collection are due to the large images.

What should you do?

- A. From Site Settings for the site collection, select Storage Metrics
- B. From Site Settings for the site collection, select Site collection health checks
- C. From the Microsoft 365 admin center, view the service status of SharePoint Online
- D. From Microsoft Edge, open the sit
- E. Run the developer tools

Answer: D

Explanation:

Scenario: Users in the HR department report performance issues affecting their site collection. You suspect that the issues are due to large images on the home page.

You can diagnose common issues with your SharePoint Online site using Internet Explorer developer tools. There are three different ways that you can identify that a page on a SharePoint Online site has a performance problem with the customizations.

- ▶ The F12 tool bar network monitor
- ▶ Comparison to a non-customized baseline
- ▶ SharePoint Online response header metrics

References:

<https://docs.microsoft.com/en-us/office365/enterprise/diagnosing-performance-issues-with-sharepoint-online>

NEW QUESTION 105

- (Exam Topic 2)

You need to meet the technical requirements for the managers of the marketing department.

Which three actions should you perform in sequence? To answer, move the appropriate actions from the list of actions to the answer area and arrange them in the correct order.

Actions	Answer Area
Select Sharing	
Open Site Settings	
Navigate to the marketing department site collection	
Configure the owners	
Select the marketing department site collections	
Open the SharePoint admin center	

- A. Mastered
- B. Not Mastered

Answer: A

Explanation:

Scenario: Ensure that the managers in the marketing department can view the storage metrics of the marketing department sites.

NEW QUESTION 106

- (Exam Topic 2)

You need to meet the technical requirements for the finance department site collection. What should you do?

- A. From the Security & Compliance admin center, create a classification label policy.
- B. From the SharePoint admin center, select the finance department site collection, and then configure the Sharing settings.
- C. From the Security & Compliance admin center, create a permission policy.
- D. From the SharePoint admin center, select Sharing, and then select Limit external sharing using domains

Answer: B

Explanation:

References:

<https://docs.microsoft.com/en-us/sharepoint/restricted-domains-sharing?redirectSourcePath=%252fen-us%252fa>

NEW QUESTION 107

- (Exam Topic 2)

You need to configure the Yammer feed to meet the technical requirements.

What is the best way to achieve the goal? More than one answer choice may achieve the goal.

- A. Add a Contact Editor web part
- B. Embed a Yammer feed
- C. Add a Yammer web part
- D. Add a Yammer link

Answer: C

Explanation:

References:

<https://docs.microsoft.com/en-us/yammer/integrate-yammer-with-other-apps/embed-a-feed-into-a-sharepointsite>

NEW QUESTION 112

- (Exam Topic 3)

You need to grant an external user, guest access to the SharePoint of the design department. What should you do?

- A. From Microsoft Outlook, add a member to a group.
- B. From the SharePoint team site, modify the Members group.
- C. From the SharePoint team site, modify the Visitors group.

Answer: A

NEW QUESTION 114

.....

Thank You for Trying Our Product

* 100% Pass or Money Back

All our products come with a 90-day Money Back Guarantee.

* One year free update

You can enjoy free update one year. 24x7 online support.

* Trusted by Millions

We currently serve more than 30,000,000 customers.

* Shop Securely

All transactions are protected by VeriSign!

100% Pass Your MS-300 Exam with Our Prep Materials Via below:

<https://www.certleader.com/MS-300-dumps.html>