

N10-007 Dumps

CompTIA Network+ N10-007

<https://www.certleader.com/N10-007-dumps.html>



NEW QUESTION 1

- (Exam Topic 1)

A device operating at Layer 3 of the OSI model uses which of the following protocols to determine the path to a different network?

- A. STP
- B. RTP
- C. RIP
- D. NTP
- E. SIP

Answer: C

NEW QUESTION 2

- (Exam Topic 1)

A network administrator has been given a network of 172.16.85.0/21 and wants to know the usable range of IP addresses on that subnet. Which of the following indicates the correct IP address range?

- A. 172.16.80.0-172.16.85.254
- B. 172.16.80.0-172.16.88.255
- C. 172.16.80.1-172.16.87.254
- D. 172.16.80.1-172.16.85.255

Answer: C

NEW QUESTION 3

- (Exam Topic 1)

Which of the following DNS record types is an alias?

- A. CNAME
- B. PTR
- C. NS
- D. SRV

Answer: A

NEW QUESTION 4

- (Exam Topic 1)

A technician is troubleshooting a workstation's network connectivity and wants to confirm which switchport corresponds to the wall jack the PC is using. Which of the following concepts would BEST jack the technician?

- A. Consistent labeling
- B. Change management
- C. Standard work instruction
- D. Inventory management
- D. Network baseline

Answer: A

NEW QUESTION 5

- (Exam Topic 1)

A company has just refreshed the hardware in its datacenter with new 10G Ethernet switches wishes to set up a new storage area network but must use existing infrastructure. Which of the following storage standards should the technician use?

- A. iSCSI
- B. Fibre Channel
- C. NAS
- D. InfinBand

Answer: C

NEW QUESTION 6

- (Exam Topic 1)

A technician is configuring a default route with IPv6. Which of the following is the correct setting for an IPV6 default rout?

- A. :: 1
- B. :: /0
- C. 2001: :0/64
- D. FE80 : :0/64

Answer: C

NEW QUESTION 7

- (Exam Topic 1)

ACHief Information Officer (CIO) is concentrated about an attacker gaining administrative access to the company's network devices. Which of the following is the MOST secure way to prevent this?

- A. ACL allowing only HTTP
- B. ACL allowing only Telnet
- C. Out-of-band modem
- D. Out-of-band console router

Answer: D

NEW QUESTION 8

- (Exam Topic 1)

A penetration tester has been tasked with reconnaissance to determine which ports are open on the network. Which of the following tasks should be done FIRST? (Choose two.)

- A. Network scan
- B. Banner grab
- C. Tracert
- D. DHCP server check
- E. Brute-force attack

Answer: AC

NEW QUESTION 9

- (Exam Topic 1)

A network administrator is redesigning network security after an attack. During the attack, an attacker used open cubicle location to attach devices to the network. The administrator wants to be able to monitor future attack in a safe environment and determine the method of attack. Which of the following should the administrator do to Best meet this requirement?

- A. Create a VLAN for the unused ports and create a honeypot on the VLAN.
- B. Install a BPDU guard on switchports and enable STP
- C. Create a DMZ for public server and secure a segment for the internal network
- D. Install antivirus software and set an ACL on the servers.

Answer: A

NEW QUESTION 10

- (Exam Topic 1)

A technician is assigned to secure a basic wireless network. Which of the following authentication protocol should the technician use to performed this task (select TWO).

- A. RDP
- B. SNMP
- C. WPA2
- D. EAP SSL

Answer: CD

NEW QUESTION 10

- (Exam Topic 1)

A technician is troubleshooting a point-to-point fiber-optic connection. The technician is at a remote site and has no connectivity to the main site. The technician confirms the switch and the send-and-receive light levels are within acceptable range. Both fiber SFPs are confirmed as working. Which of the following should the technician use to reveal the location of the fault?

- A. OTDR
- B. Light meter
- C. Tone generator
- D. CSU/DSU

Answer: A

NEW QUESTION 12

- (Exam Topic 1)

A technician is troubleshooting network connectivity issue with a remote host. Which of the following tools would BEST between the client and the remote host?

- A. tracer
- B. ping
- C. tcpdump
- D. pathping
- E. netstate
- F. nslookup
- G. route

Answer: EF

NEW QUESTION 17

- (Exam Topic 1)

A technician is troubleshooting network connectivity issues with a remote host. Which of the following tools would BEST inform the technician of nodes between the client and the remote host? (Choose two.)

- A. tracert
- B. ping
- C. tcpdump
- D. pathping
- E. netstat
- F. nslookup
- G. route

Answer: AD

NEW QUESTION 22

- (Exam Topic 1)

Which of the following provides the ability to deploy consistent access point configurations from a central location?

- A. Wireless controller
- B. AAA server
- C. WiFi-protected setup
- D. Proxy server
- E. VPN concentrator

Answer: A

NEW QUESTION 23

- (Exam Topic 1)

A network technician has unable to make a from a datacenter. The technician attempts to use the cables to connect desktops to the network without success.

Which of the following is MOST likely the issue?

- A. The cables have an incorrect pin out
- B. The cables UTP instead of STP.
- C. The cables are 6 instead of Cat 5.
- D. The cables plenum rated.

Answer: D

NEW QUESTION 28

- (Exam Topic 1)

A company recently upgraded all of its printers to networked multifunction devices. Users can print to the new devices, but they would also like the ability to scan and fax files from their computers. Which of the following should the technician update to allow this functionality?

- A. Device software
- B. Printer drivers
- C. Printer firmware
- D. NIC drivers

Answer: C

NEW QUESTION 32

- (Exam Topic 1)

A technician is allocating the IP address space needed for a remote office. This office will contain the engineering staff with six employees and the digital marketing staff with 55 employees. The technician has decided to allocate the 192.1.0/24 block to the remote office. The engineering staff has been allocated the 192.168./29 subnet. Using the LEAST amount of space possible, which of the following would be the last usable IP address in the engineering subnet?

- A. 192.168.1.62
- B. 192.168.1.63
- C. 192.168.1.70
- D. 192.168.1.71

Answer: A

NEW QUESTION 33

- (Exam Topic 1)

Which of the following storage network technologies inherently leverages block-level storage?

- A. NAS
- B. SAN
- C. FCoE
- D. iSCSI
- E. FTP

Answer: A

NEW QUESTION 36

- (Exam Topic 1)

Which of the following datacenter security methodologies is MOST likely to remain usable during a network outage?

- A. biometric scanners
- B. door locks

- C. video surveillance
- D. motion detectors

Answer: B

NEW QUESTION 40

- (Exam Topic 1)

A typical cell tower will have microwave and cellular antennas. Which of the following network topologies do these represent? (Choose two.)

- A. Point-to-multipoint
- B. Bus
- C. Point-to-point
- D. Mesh
- E. Peer-peer
- F. Ring

Answer: CD

NEW QUESTION 44

- (Exam Topic 1)

At which of the following OSI model layers would a router operate?

- A. Physical
- B. Network
- C. Transport
- D. Data link

Answer: B

NEW QUESTION 46

- (Exam Topic 1)

A technician is configuring a printer for a client. The which of the following types to the network, But is unsure how to determine its switch port. Which of the following should the technician do FIRST to locate switch port?

- A. perform a DNS lookup on the server.
- B. Set up a SSH session to the desktop
- C. Reference the ARP table in the router
- D. Configure port security on the switch.

Answer: D

NEW QUESTION 51

- (Exam Topic 1)

A network technician is working on a new switch implementation to expand the network. Which of the following is the BEST option to ensure the implementation goes according to business requirements?

- A. AUP
- B. NDA
- C. SOP
- D. SLA

Answer: C

NEW QUESTION 54

- (Exam Topic 1)

A system administrator receives report from users of odd behavior in regard to recently installed server. While reviewing the server network configuration, the systems administrator does both a forward and a reverse DNS lookup on the host, along with the network adapter configuration.

```
$ host server.company.com
server.company.com has address 129.168.0.100
server.company.com is handled by 100 mail.company.com
$ host 192.168.0.100
100.0.168.192.in-addr.arpa domain name pointer web.company.com
$ host web.company.com
server.company.com has address 129.168.0.50
server.company.com is handled by 100 mail.company.com
$ ifconfig -a
eth0Link encap:Ethernet HWaddr 00:30:48:9D:06:73
Inet addr:192.168.0.100 Bcast:192.168.0.255 Mask:255.255.255.0
UP BROADCAST RUNNING MULTICAST MTU:1500 Metric:1
lo0Link encap:Local Loopback
inet addr:127.0.0.1 Mask:255.0.0.0
UP LOOPBACK RUNNING MTU:16436 Metric:1
```

Which of the following is the problem identified in the output above?

- A. There is no reverse DNS entry for this host.

- B. The server IP address is incorrectly configured.
- C. The DNS lookup entry is incorrectly configured.
- D. The reverse DNS entry is pointing to a different host.

Answer: C

NEW QUESTION 56

- (Exam Topic 1)

A network technician is troubleshooting wireless network issues in a crowded office complex and suspects there is interference from nearby wireless networks. Which of the following should the technician perform to discover possible interference?

- A. Site survey
- B. Vulnerability scanning
- C. Wardriving
- D. Checking logical diagram
- E. Bandwidth test

Answer: A

NEW QUESTION 58

- (Exam Topic 1)

A firewall log reports unencrypted console commands coming in on the WAN interface on the router. Inspection, port 23 is found to berouter. Which of the following should be done to the router?

- A. Block all traffic coming in on that interface.
- B. Use Base64 to obfuscate the console traffic.
- C. Implement a pki to authenticate clients.
- D. Disable the Telnet service on the device.

Answer: A

NEW QUESTION 63

- (Exam Topic 1)

A network technician is deploying mobile phones for a company's sales staff. Salespeople frequently travel nationally and internationally to meet with clients, and often have to roam or switch cellular providers. Which of the following standards is the BEST option to fit the requirements?

- A. GSM
- B. TDM
- C. CDMA
- D. PSTN
- E. MIMO

Answer: A

NEW QUESTION 66

- (Exam Topic 1)

Which of the following BEST describes the BGP routing protocol?

- A. distance vector
- B. hybrid
- C. static
- D. link state

Answer: B

NEW QUESTION 67

- (Exam Topic 1)

A technician is setting up a direct connection between two older PCs so they can communicate but not be on the corporate network. The technician does not have access to a spare switch but does have spare Cat 6 cables, RJ-45 plugs, and a crimping tool. The technician cuts off one end of the cable. Which of the following should the technician do to make a crossover cable before crimping the new plug?

- A. Reverse the wires leading to pins 1 and 2
- B. Reverse the wires leading to pins 1 and 3
- C. Reverse the wires leading to pins 2 and 3
- D. Reverse the wires leading to pins 2 and 4

Answer: D

NEW QUESTION 69

- (Exam Topic 1)

Which of the following can be done to implement network device hardening (Select TWO).

- A. Implement spanning tree
- B. Perform VLAN hopping
- C. Patch and update
- D. Perform backups
- E. Enable port mirroring

F. Change default admin password

Answer: CF

Explanation:

Network devices come with default credentials, the username and password that enables you to log into the device for configuration. Changing default credentials should be the first step in hardening a new device. As with any other system, avoiding common passwords adds security.

Keep network devices up to date. That means upgrading firmware, patching and updating as necessary to close any security gaps exposed over time.

Services on network devices like routers include common things, like Telnet and HTTP access; and also things you don't normally see, like TCP and UDP small services, debugging and testing tools that primarily use ports 20 and lower. If enabled, these services can be used to launch DoS and other attacks. All modern Cisco devices have these disabled; Cisco's hardening rules insist on disabling unnecessary services.

Using secure protocols hardens network devices. Don't use Telnet to access a managed switch or router, for example, but use SSH so that the communication is encrypted.

Disabling unused ports on network devices enhances port security for access control. This includes standard IP ports and device ports, both physical and virtual for the latter.

NEW QUESTION 70

- (Exam Topic 1)

A technician needs to order cable that meets 10GBaseT and safety requirements for an installation between a drop ceiling and a standard ceiling.

Which of the following should the technician order to ensure compliance with the requirements?

- A. PVC Cat 5
- B. Plenum Cat 5e
- C. Plenum Cat 6a
- D. PVC Cat 7

Answer: C

Explanation:

10GBaseT A 10 GbE standard designed to run on Cat 6a UTP cabling. Maximum cable length of 100 m.

NEW QUESTION 75

- (Exam Topic 1)

Under which of the following layers of the OSI do ATM cells operate?

- A. Data link
- B. Network
- C. Session
- D. Transport
- E. Presentation

Answer: A

NEW QUESTION 77

- (Exam Topic 1)

A technician has installed a Linux server in the tax office. The server can access most of the resources on the network, but it cannot connect to another server that has a share for backup. The technician learns that the target server is on a different subnet. Which of the following tools should the technician use to ensure the Linux server can reach the backup location?

- A. netstat
- B. traceroute
- C. route
- D. dig
- E. ifconfig

Answer: B

NEW QUESTION 80

- (Exam Topic 1)

A technician is setting up a wireless access point in a coffee shop. The shop is not concerned with security but only wants to allow customers to have access.

Which of the following configurations should the technician deploy?

- A. Use a pre-shared key.
- B. Set up EAP.
- C. Configure RADIUS.
- D. Configure MAC filtering.

Answer: A

NEW QUESTION 83

- (Exam Topic 1)

Which of the following protocols authenticates a PC to the server using a ticket issued to it by the authentication service?

- A. Kerberos
- B. RADIUS
- C. TACACS+
- D. LDAP

Answer: A

NEW QUESTION 84

- (Exam Topic 1)

A network administrator gets a call regarding intermittent network outages across the country. Which of the following should be used to connect to the network so the administrator can troubleshoot this issue from home? (Choose two.)

- A. FTP
- B. SMTP
- C. VPN
- D. SSH
- E. SNMP

Answer: CD

NEW QUESTION 87

- (Exam Topic 1)

A network technician notices the site-to-site VPN and Internet connection have not come back up at a branch office after a recent power outage. Which of the following is an out-of-band method the technician would MOST likely utilize to check the branch office's router status?

- A. Use a modem to console into the router
- B. Walk a user through troubleshooting the connection
- C. Travel to the branch office
- D. Hire a contractor to go on-site

Answer: A

NEW QUESTION 91

- (Exam Topic 1)

A company finds that many desktops are being reported as missing or lost. Which of the following would BEST assist in recovering these devices?

- A. Asset tracking tags
- B. Motion detectors
- C. Security guards
- D. Computer locks

Answer: D

NEW QUESTION 93

- (Exam Topic 1)

A junior technician is setting up a voice control device so the Chief Executive Officer (CEO) will be able to control various things in the office. Of which of the following types of IoT technologies is this an example?

- A. LAN
- B. WAN
- C. SAN
- D. PAN

Answer: D

NEW QUESTION 96

- (Exam Topic 1)

A junior network technician receives a help desk ticket from an end user who is having trouble accessing a web application that was working the previous day. After talking with the end user and gathering information about the issue, which of the following would be the most likely course of action for the technician to perform next?

- A. Establish a theory of probable cause.
- B. Escalate the ticket to a senior technician.
- C. Implement the solution.
- D. Document the findings and outcomes.

Answer: A

NEW QUESTION 97

- (Exam Topic 1)

A network technician is diagnosing a time-out issue generated from an end user's web browser. The web browser issues standard HTTP GET and POST commands to interact with the website. Given this information, the technician would like to analyze the entire TCP handshake of the HTTP requests offline. Which of the following tools would allow the technician to view the handshake?

- A. Packet analyzer
- B. Port analyzer
- C. SNMP traps
- D. Spectrum analyzer

Answer: A

NEW QUESTION 100

- (Exam Topic 1)

Which of the following ports should a network technician open on a firewall to back up the configuration and operating system files of a router to a remote server using the FASTES method possible?

- A. UDP port 22
- B. TCP port 22
- C. TCP port 25
- D. UDP port 53
- E. UDP port 69

Answer: E

NEW QUESTION 104

- (Exam Topic 1)

Which of the following security mechanisms dynamically assigns a Layer 2 address and restricts traffic only to that Layer 2 address?

- A. Sticky MAC
- B. 802.1x
- C. ACL
- D. NAC

Answer: A

NEW QUESTION 105

- (Exam Topic 1)

A junior network technician is setting up a new email server on the company network. Which of the following default ports should the technician ensure is open on the firewall so the new email server can relay email?

- A. 23
- B. 25
- C. 110
- D. 143

Answer: B

NEW QUESTION 108

- (Exam Topic 1)

Which of the following DNS records needs to be configured for SMTP traffic?

- A. MX
- B. CNAME
- C. AAAA
- D. PTR

Answer: A

NEW QUESTION 109

- (Exam Topic 1)

A firewall administrator is implementing a rule that directs HTTP traffic to an internal server listening on a non-standard socket. Which of the following types of rules is the administrator implementing?

- A. NAT
- B. PAT
- C. STP
- D. SNAT
- E. ARP

Answer: B

NEW QUESTION 114

- (Exam Topic 1)

A contractor is setting up and configuring conference rooms for a convention. The contractor sets up each room in the conference center to allow wired Internet access going to individual tables. The contractor measured the distance between the hotel's patch panel to the jack, and the distance is within Cat 5e specifications. The contractor is concerned that the room will be out of specification if cables are run in each room from the wall jacks. Which of the following actions should the contractor take to ensure the cable runs meet specifications and the network functions properly?

- A. Place a switch at the hotel's patch panel for connecting each room's cables
- B. Place a switch on each table to ensure strong connectivity
- C. Place repeaters between the patch panel and the rooms
- D. place a switch at the wall jack and run the cables in the room from there

Answer: A

NEW QUESTION 116

- (Exam Topic 1)

Which of the following should a technician investigate when using a network baseline to troubleshoot?

- A. Tracing a network wire connectivity issue from the datacenter to a host.
- B. Determining if the server performance is degraded.
- C. Changes that have been made to the network configuration.
- D. Location of networking equipment in a rack.

Answer: B

NEW QUESTION 117

- (Exam Topic 1)

Which of the following provides two factor authentication?

- A. Username+ password
- B. Smartcard +PIN
- C. Fingerprint +retina scan
- D. Key fob +ID card

Answer: B

NEW QUESTION 120

- (Exam Topic 1)

A network security technician observes multiple attempts to scan network hosts and devices. All the attempts originate from a single host on the network. Which of the following threats is MOST likely involved?

- A. Smurf attack
- B. Rogue AP
- C. Compromised system
- D. Unintentional DoS

Answer: C

NEW QUESTION 121

- (Exam Topic 1)

Ann, a network technician, has just installed a fiber switch in a datacenter. To run the fiber cabling, Ann plans the cable route over the top of the rack using the cable trays, down to the switch, coiling up any excess cable. As Ann configures the switch, she notices several messages in the logging buffer stating the receive signal of the SFP is too weak. Which of the following is MOST likely the cause of the errors in the logging buffer?

- A. Bend radius exceeded
- B. Fiber cable mismatch
- C. Fiber type mismatch
- D. Bad fiber switch

Answer: A

NEW QUESTION 122

- (Exam Topic 1)

An office user cannot access local network drives but has full access to the Internet. A technician troubleshoots the issue and observes the following output of the ipconfig command:

```
Windows IP Configuration

Ethernet LAN Adapter: 980GTS
Connection-specific DNS Suffix: ...comptia.net
IPv4 Address: .....10.0.5.99
Subnet Mask: .....255.255.255.0
Default Gateway: ...10.0.5.1

Wireless LAN Adapter: FastWifi 99
Connection-specific DNS Suffix: ...guestwireless.local
IPv4 Address: .....172.16.0.5
Subnet Mask: .....255.255.255.0
Default Gateway: ...172.16.0.254
```

Which of the following would MOST likely allow the network drives to be accessed?

- A. Update the WLAN adapter driver
- B. Disable the WLAN adapter
- C. Check the wireless DHCP configuration
- D. Disable the LAN adapter

Answer: B

NEW QUESTION 124

- (Exam Topic 1)

A network administrator wants to employ a username and password authentication system for guest WiFi. Which of the following is the BEST option to provide this type of authentication?

- A. port security
- B. MAC filtering

- C. Network access control
- D. Captive portal

Answer: D

NEW QUESTION 128

- (Exam Topic 1)

A small town is attempting to attract tourists who visit larger nearby cities. A network engineer is asked to implement a network encompassing the five-block town center and nearby businesses. The inclusion of smartphones and portable devices is crucial to the plan. Which of the following is the network engineer being asked to implement?

- A. LAN
- B. PAN
- C. MAN
- D. WAN

Answer: C

NEW QUESTION 131

- (Exam Topic 1)

A network technician is able to connect the switches between to offices, but the offices cannot communicate with each other, as each office uses a different IP addressing scheme. Which of the following devices needs to be installed between the switches to allow communication?

- A. Bridge
- B. Access point
- C. Router
- D. Range extender

Answer: C

NEW QUESTION 136

- (Exam Topic 1)

A technician is investigating a server performance issue. The technician has gathered the server utilization statistics. Which of the following should the technician use to determine which statistics are not in the normal range?

- A. Baseline review
- B. Vulnerability scan
- C. System life-cycle report
- D. Archiving logs

Answer: A

NEW QUESTION 137

- (Exam Topic 1)

A technician wants to prevent an unauthorized host from connecting to the network via Ethernet. Which of the following is a Layer 2 access control the technician should implement?

- A. Access control lists
- B. Captive portal
- C. WPA2
- D. Port security

Answer: D

NEW QUESTION 140

- (Exam Topic 1)

A network technician needs to install a new access switch. After installing the new switch, the technician begins to move connections from the old switch to the new switch. The old switch used a GBIC connectors, and the new switch uses an SFP LC with LC connectors. After connecting the SC connector to the SC-to-LC adapter and plugging it to the switch, the link does not come up as expected. Which of the following should a network technician perform NEXT?

- A. Replace SFP with a new one.
- B. Fall back to the switch.
- C. Transpose the fiber pairs.
- D. Replace multimode with single-mode cable

Answer: C

NEW QUESTION 145

- (Exam Topic 1)

A technician is replacing a switch at a branch office and discovers the existing backbone cable does not fit in the new switch. The fiber patch panel has circular connections. The new switch has a transceiver that accepts a smaller square adapter of two strands. Which of the following patch cables would the technician need to complete the installation?

- A. LC to SC
- B. SC to ST
- C. LC to ST
- D. ST to ST

E. SC to SC

Answer: C

NEW QUESTION 147

- (Exam Topic 1)

Which of the following are DNS record type? (Select THREE).

- A. CNAME
- B. NTP
- C. PTR
- D. LDAP
- E. DHCP
- F. TTL
- G. SRV
- H. SSH

Answer: ACG

NEW QUESTION 149

- (Exam Topic 1)

Which of the following VPN protocols establishes a secure session that can be initiated using a browser?

- A. IPSec
- B. SSL VPN
- C. PTP
- D. PPTP

Answer: B

NEW QUESTION 150

- (Exam Topic 1)

Users are reporting issues with slow connection speeds and a loss of connectivity on the newly installed wireless network. The issues are intermittent but seem to occur most often around midday. Which of the following is the MOST likely cause?

- A. There is interference from small appliances
- B. The signal coverage area is too small
- C. Not enough DHCP addresses have been allotted
- D. The DNS cache on the users' computers has become corrupt

Answer: C

NEW QUESTION 151

- (Exam Topic 1)

A network technician is configuring a wireless network at a branch office. Users at this office work with large files and must be able to access their files on the server quickly. Which of the following 802.11 standards provides the MOST bandwidth?

- A. a
- B. ac
- C. g
- D. n

Answer: B

NEW QUESTION 153

- (Exam Topic 1)

A network technician is installing a new SOHO branch office that requires the use of a DOCSIS-compatible. The modem needs to be connected to the ISP's network at the demark. Which of the following cable type should be used?

- A. UTP
- B. Multimode
- C. Coaxial
- D. Serial

Answer: C

NEW QUESTION 157

- (Exam Topic 1)

A network engineer is configuring wireless access for guests at an organization. Access to other areas in the organization should not be accessible to guests. Which of the following represents the MOST secure method to configure guest access to the wireless network?

- A. Guests should log into a separate wireless network using a captive portal
- B. Guests should log into the current wireless network using credentials obtained upon entering the facility
- C. The existing wireless network should be configured to allow guest access
- D. An additional wireless network should be configured to allow guest access

Answer: A

NEW QUESTION 159

- (Exam Topic 1)

A switch has detected duplicate broadcast messages sourced from a second port. The broadcasts continue to be transmitted and duplicated until the amount of traffic causes severe performance issues. Which of the following should be configured to prevent this behavior?

- A. BPDU guard
- B. DHCP snooping
- C. ARP protection
- D. Spanning tree

Answer: D

NEW QUESTION 163

- (Exam Topic 1)

A technician is connecting a PC to a switchport. At the wiring closet, the technician is identify which cable goes from patch panel a connected to the switch to patch panel B connected to the PC. Which of the following tools should the technician use to resolve the issue?

- A. Cable tester
- B. Multimeter
- C. Tone generator
- D. OTDR

Answer: C

NEW QUESTION 168

- (Exam Topic 1)

Which of the following would be the MOST efficient subnet mask for a point-to-point link?

- A. /28
- B. /29
- C. /31
- D. /32

Answer: C

NEW QUESTION 169

- (Exam Topic 1)

ACHief Information Officer (CIO) wants to move some IT services to a cloud service offering. However, the network administrator still wants to be able to control some parts of the cloud service's networking components. Which of the following should be leveraged to complete this task?

- A. IaaS
- B. PaaS
- C. SaaS
- D. DaaS

Answer: B

NEW QUESTION 171

- (Exam Topic 1)

A technician has been alerted of incoming HTTP traffic on the LAN segment that should not contain any web server's The technician has the IP address of the destination host and wants to determine if the socket for HTTP is open. Which of the following should the technician perform?

- A. Baseline assessment
- B. packet analysis
- C. portscan
- D. Patch-level assessment.

Answer: C

NEW QUESTION 175

- (Exam Topic 1)

A technician logs onto a system using Telnet because SSH is unavailable. SSH is enabled on the target device, and access is allowed from all subnets. The technician discovers a critical step was missed. Which of the following would allow SSH to function properly?

- A. Perform file hashing
- B. Generate new keys
- C. Update firmware
- D. Change default credentials

Answer: B

NEW QUESTION 176

- (Exam Topic 1)

A network technician has created a network that consists of a router, a firewall, a switch, and several PCs. Which of the following physical network topologies was created?

- A. Star
- B. Mesh
- C. Ring
- D. Bus

Answer: D

NEW QUESTION 181

- (Exam Topic 1)

The backups server connects to a NAS device using block-level storage over Ethernet. The performance is very slow, however, and the network technician suspects the performance issues are network related. Which of the following should the technician do to improve performance?

- A. Utilize UDP to eliminate packet overhead
- B. Turn off MDIX settings on the NAS and server switchports
- C. Enable jumbo frames on the NAS and server
- D. Encapsulate the storage traffic in a GRE tunnel

Answer: C

NEW QUESTION 184

- (Exam Topic 1)

A network technician is troubleshooting an end-user connectivity problem. The network technician goes to the appropriate IDF but is unable to identify the appropriate cable due to poor labeling. Which of the following should the network technician use to help identify the appropriate cable?

- A. Tone generator
- B. Multimeter
- C. OTDR
- D. Loopback adapter

Answer: A

NEW QUESTION 186

- (Exam Topic 1)

A technician is connecting a router directly to a PC using the G1/0/1 interface. Without the use of auto-sensing ports, which of the following cables should be used?

- A. Straight-through
- B. Console
- C. Rollover
- D. Crossover

Answer: D

NEW QUESTION 188

- (Exam Topic 1)

A company is allowing its employees to use their personal computers, tables, and IoT devices while at work. However, there are rules and guidelines to which employees must adhere. Which of the following documents applies to these employees?

- A. NDA
- B. SOP
- C. BYOD
- D. SLA

Answer: C

NEW QUESTION 193

- (Exam Topic 1)

A security guard notices an unauthorized individual, who is dressed like technician, has entered a secure area of the hospital with a large group. Which of the following security attacks is taking place?

- A. Evil twin
- B. Social engineering
- C. Insider threat
- D. Phishing

Answer: B

Explanation:

Social engineering attacks aren't considered hacking—at least in the classic sense of the word—although the goals are the same. Social engineering is where people attack an organization through the people in the organization or physically access the organization to get the information they need.

NEW QUESTION 197

- (Exam Topic 1)

Users have been experiencing slow network response times, and management has asked the network technician to provide evidence of network improvement. After optimizing the network, which of the following would be required?

- A. IDF/MDF documentation
- B. Change management

- C. Performance baseline
- D. Physical diagram

Answer: C

NEW QUESTION 202

- (Exam Topic 1)

A network technician needs to connect to a remote router to modify the configuration, Which of the following method should the technician use to connected to the device security? (Select TWO)

- A. Telnet
- B. VNC
- C. SSH
- D. RDP
- E. HTTPS
- F. TFTP

Answer: BC

NEW QUESTION 203

- (Exam Topic 1)

A customer cannot access a company's secure website. The company's network security is reviewing the firewall for the server and finds the following output:

Time	Action	Src IP	Src Port	Dst IP	Dst Port
0902	Allow	12.73.15.5	31865	10.5.0.10	80
1005	Deny	12.73.15.5	31866	10.5.0.10	443
1006	Deny	12.73.15.5	31890	10.5.0.10	443

Which of the following changes should be made to allow all customers to access the company's secure website?

- A. Allow any any 10.5.0.10 443
- B. Allow any any 12.73.15.5 443
- C. Allow 10.5.0.10 443 any any
- D. Allow 10.5.0.10 any 10.5.0.10 80

Answer: C

NEW QUESTION 206

- (Exam Topic 1)

A user reports that a laptop cannot connect to the Internet despite the fact the wireless Internet was functioning on it yesterday. The user did not modify the laptop in any way, and the wireless Internet is functional on other users' laptops. Which of the following issues should be reviewed to help the user to connect to the wireless network?

- A. Wireless switch toggled off
- B. WAP settings
- C. WLAN IP address out of scope
- D. Wireless controller misconfiguration

Answer: A

NEW QUESTION 208

- (Exam Topic 1)

Users in a school lab are reporting slow connections to the servers and the Internet. Other users in the school have no issues. The lab has 25 computers and is connected with a single 1Gb Ethernet connection on Cat 5e wiring to an unmanaged switch. There are also three spare Cat 5e cable runs, which are not in use. The school wants to double the connection speed between the lab and the servers without running new cables. Which of the following would be the BEST solution?

- A. Plug in a second spare cable at each end to double the speed.
- B. Replace the switches with ones that utilize port bonding and use the spare cables.
- C. Replace the switches with 10Gb switches and utilize the existing cabling.
- D. Plug in a second cable and set one port to TX and one port to RX.

Answer: B

NEW QUESTION 210

- (Exam Topic 1)

Which of the following WAN technologies is MOST preferred when developing a VoIP system with 23 concurrent channels?

- A. DSL
- B. POTS
- C. T1
- D. DOCSIS

Answer: C

NEW QUESTION 213

- (Exam Topic 1)

The Chief Executive Officer's (CEO's) tablet cannot connect to the wireless network from the corner office. A network technician verified the tablet can connect to

the wireless network in other areas of the building. The distance between the office and the 802.11ac WAP is 150ft (46m), and there are a few cubicles in between. Which of the following is the MOST likely cause of the tablet not connecting?

- A. Absorption
- B. Reflection
- C. Distance
- D. Refraction
- E. Attenuation

Answer: C

NEW QUESTION 216

- (Exam Topic 1)

A network technician needs to separate a web server listening on port 80 from the internal LAN and secure the server from the public Internet. The web server should be accessible to the public Internet over port 80 but not the private LAN. Currently, the network is segmented with a network-based firewall using the following IP addressing scheme on each interface:

Zone	Interface	IP Address
Public	eth0	10.0.0.1/24
DMZ	eth1	10.0.1.1/24
Private	eth2	10.0.2.1/24

Which of the following ones should the technician use to place the web server and which of the following firewall rules should the technician configure?

- A. Place the web server in the public zone with an inbound rule from eth0 interface to accept traffic over port 80 designated to the web server
- B. Place the web server in the DMZ with an inbound rule from eth0 interface to eth1 to accept traffic over port 80 designated to the web server
- C. Place the web server in the private zone with an inbound rule from eth2 interface to eth1 to accept traffic over port 80 designated to the web server
- D. Place the web server in the DMZ with an inbound rule from eth1 interface to eth0 to accept traffic over port 80 designated to the web server

Answer: B

NEW QUESTION 218

- (Exam Topic 1)

A network engineer wants to segment the network into multiple broadcast domains. Which of the following devices would allow for communication between the segments?

- A. Layer 2 switch
- B. Layer 3 switch
- C. Bridge
- D. Load balancer

Answer: B

NEW QUESTION 219

- (Exam Topic 1)

A technician has racked a new access switch and has run multimode fiber to a new location. After installing an extended-range 10Gb SFP in the core switch, the technician installed a 10Gb SFP in the access switch and connected the port to the new extension with a fiber jumper. However, the link does not display, and the technician cannot see light emitting from the core switch. Which of the following solutions is MOST likely to resolve the problem?

- A. Swap the fiber pairs in one of the SFPs
- B. Replace the jumpers with single-mode fiber
- C. Set the correct MTU on the new interface
- D. Install an optic that matches the fiber type

Answer: B

NEW QUESTION 223

- (Exam Topic 1)

A network administrator has had difficulty keeping track of IP address assignments on networking devices and clients recently. Which of the following is the BEST technology to aid in this scenario?

- A. DNS
- B. DHCP
- C. IPAM
- D. NTP

Answer: C

NEW QUESTION 225

- (Exam Topic 1)

An administrator is moving to a new office. There will be several network runs through the ceiling area of the office. Which of the following is the BEST to utilize in these areas?

- A. Single-mode fiber-optic cabling
- B. Cat 5e-rated cabling

- C. Cat 6-rated cabling
- D. Plenum-rated cabling

Answer: D

NEW QUESTION 226

- (Exam Topic 1)

Which of the following concepts would BEST describe when a company chooses to use a third-party vendor to host and administer critical application?

- A. SaaS
- B. IaaS
- C. PaaS
- D. CASB

Answer: C

NEW QUESTION 230

- (Exam Topic 1)

Which of the following physical security controls is MOST likely to be susceptible to a false positive?

- A. Identification card
- B. Biometric device
- C. Proximity reader
- D. Video camera

Answer: C

NEW QUESTION 234

- (Exam Topic 1)

A single PRI can deliver multiple voice calls simultaneously using which of the following Layer 1 technologies?

- A. Time division multiplexing
- B. Analog circuit switching
- C. CSMA/CD
- D. Time division spread spectrum

Answer: A

NEW QUESTION 237

- (Exam Topic 2)

Zach, a technician, is installing an 802.11n network. Which of the following should he disable to stop broadcasting the network name?

- A. Channel
- B. WEP
- C. SSID
- D. WPA

Answer: C

NEW QUESTION 242

- (Exam Topic 2)

Which of the following uses port 53 by default?

- A. RDP
- B. QoS
- C. DHCP
- D. DNS

Answer: D

NEW QUESTION 243

- (Exam Topic 2)

Which of the following is an IPv6 address?

- A. 00:14:38:05:7B:E5
- B. 10.10.1.1
- C. 192.168.1.1
- D. 2001:cdba::3257:9652

Answer: D

NEW QUESTION 248

- (Exam Topic 2)

Which of the following connector types would Sandy, a network technician, use to connect a serial cable?

- A. RJ-11
- B. BNC
- C. LC
- D. DB-9

Answer: D

NEW QUESTION 250

- (Exam Topic 2)

Which of the following has a maximum transfer rate of 54Mbps and operates at the 5GHz frequency?

- A. 802.11a
- B. 802.11b
- C. 802.11g
- D. 802.11n

Answer: A

NEW QUESTION 255

- (Exam Topic 2)

A company has installed an access point and configured it to broadcast at 802.11n only. Some users are stating that they cannot connect to this access point.

Which of the following is the MOST likely reason some users cannot connect?

- A. Incorrect channel
- B. Weak encryption
- C. Incompatible NICs
- D. Incorrect SSID

Answer: C

NEW QUESTION 260

- (Exam Topic 2)

Which of the following ports would have to be allowed through a firewall to allow SNMP traffic to pass on its default port? (Select TWO).

- A. 22
- B. 23
- C. 143
- D. 161
- E. 162
- F. 8080

Answer: DE

NEW QUESTION 263

- (Exam Topic 2)

Jeff, a network engineer, is troubleshooting an issue where clients are not receiving IP addresses from a new, properly configured DHCP server on another subnet. Statically addressed clients can get onto the same network with no issues. Which of the following is causing the issue?

- A. Incorrect VLAN tagging
- B. Missing helper addresses
- C. Wrong default gateway
- D. Improper routing protocols

Answer: B

NEW QUESTION 266

- (Exam Topic 2)

Which of the following uses eight groups of characters for addressing?

- A. MAC
- B. IPv4
- C. IPv6
- D. DHCP

Answer: C

NEW QUESTION 269

- (Exam Topic 2)

Which of the following defines an IP address that is NOT routed on the Internet?

- A. Multicast
- B. Public
- C. Private
- D. Classful

Answer: C

NEW QUESTION 272

- (Exam Topic 2)

Which of the following protocols would Kurt, a technician, use to synchronize local date and time of a client workstation to that of a server?

- A. RTP
- B. NTP
- C. TFTP
- D. ARP

Answer: B

NEW QUESTION 274

- (Exam Topic 2)

Which of the following protocols are used to connect devices in a secure manner? (Select TWO).

- A. TELNET
- B. SSH
- C. RDP
- D. HTTP
- E. DNS
- F. FTP

Answer: BC

NEW QUESTION 277

- (Exam Topic 2)

Which of the following is characterized by an attacker attempting to map out an organization's staff hierarchy in order to send targeted emails?

- A. Whaling
- B. Impersonation
- C. Privilege escalation
- D. Spear phishing

Answer: A

NEW QUESTION 278

- (Exam Topic 2)

Which of the following will allow multiple frequencies to be combined?

- A. WiMAX
- B. MPLS
- C. MIMO
- D. Channel bonding

Answer: D

NEW QUESTION 281

- (Exam Topic 2)

Which of the following defines when Pete, an attacker, attempts to monitor wireless traffic in order to perform malicious activities?

- A. XSS
- B. SQL injection
- C. Directory traversal
- D. Packet sniffing

Answer: D

NEW QUESTION 285

- (Exam Topic 2)

Which of the following routing protocols relies on hop count as its ONLY metric?

- A. BGP
- B. EIGRP
- C. OSPF
- D. RIP

Answer: D

NEW QUESTION 290

- (Exam Topic 2)

Which of the following is the network topology in which computers connect in a closed circle?

- A. Bus
- B. Mesh
- C. Ring
- D. Star

Answer: C

NEW QUESTION 294

- (Exam Topic 2)

A company has a large number of employees that need VPN access from home. Which of the following is the BEST solution for deploying and managing the remote access?

- A. Site-to-site VPN
- B. Network-based firewall
- C. SSL VPN
- D. Host-based firewall

Answer: C

NEW QUESTION 296

- (Exam Topic 2)

Which of the following cables is MOST likely to be terminated into a patch panel?

- A. Serial
- B. RG-6
- C. RG-59
- D. CAT6

Answer: D

NEW QUESTION 298

- (Exam Topic 2)

A technician discovers that a malware infection has damaged part of the Windows TCP/IP stack. Which of the following commands can help repair the damage?

- A. netsh lan
- B. netsh interface
- C. netsh wlan
- D. netsh winsock

Answer: D

NEW QUESTION 300

- (Exam Topic 2)

An administrator is receiving reports from an executive that the executive's wireless access point loses the signal frequently, even though the WAP is on the executive's desk. The office contains four other 802.11n access points. Which of the following would MOST likely correct interference problems in the executive's office?

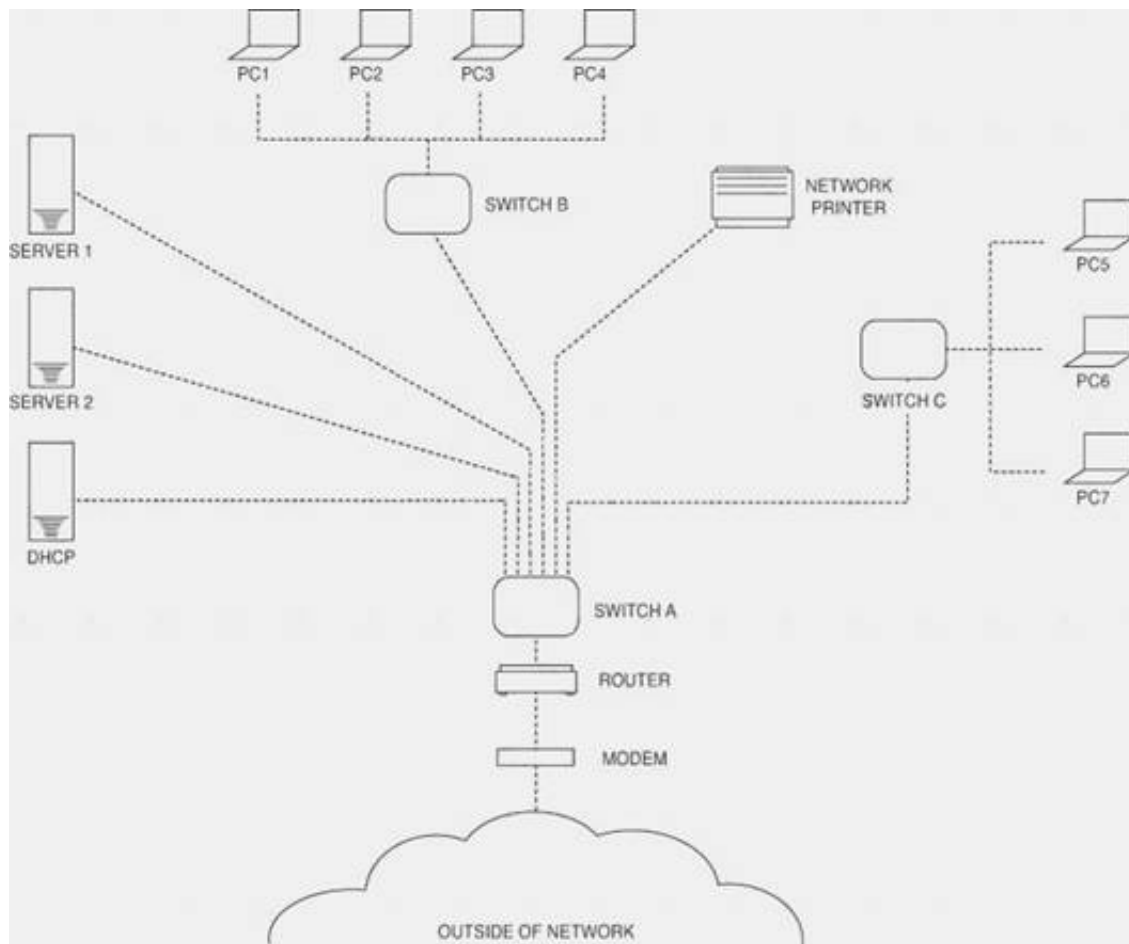
- A. Turn off SSID broadcasting for the executive's access point
- B. Replace the 802.11n access point in the office with an 802.11a access point.
- C. Change the channel on the access point to channel 11.
- D. Turn off as many lights in the executive's office as possible to reduce interference.

Answer: C

NEW QUESTION 302

- (Exam Topic 2)

Please refer to the attached exhibit. Which of the following types of configuration management documentation is represented?



- A. Network security policy
- B. Network baseline
- C. Logical network diagram
- D. Wiring schematic

Answer: C

NEW QUESTION 306

- (Exam Topic 2)

Which of the following default services uses TCP/UDP port 88?

- A. LDAP
- B. IGMP
- C. HTTP
- D. Kerberos

Answer: D

NEW QUESTION 309

- (Exam Topic 2)

Which of the following MUST be kept synchronized in order for Kerberos to work?

- A. Certificate
- B. Ticket
- C. Time
- D. Token

Answer: C

NEW QUESTION 313

- (Exam Topic 2)

A user is unable to print to a network printer. Which of following is the FIRST step that a technician should take to troubleshoot the issue?

- A. Identify the problem.
- B. Establish a plan of action to resolve the problem.
- C. Establish a theory of probable cause.
- D. Implement preventative measures.

Answer: A

NEW QUESTION 316

- (Exam Topic 2)

Which of the following ports does DHCP use? (Select TWO).

- A. 22
- B. 23
- C. 67
- D. 68
- E. 69

Answer: CD

NEW QUESTION 318

- (Exam Topic 2)

Which of the following network topologies allows only communication to take place from one node at a time by passing a token around the network?

- A. Star
- B. Mesh
- C. Bus
- D. Ring

Answer: D

NEW QUESTION 322

- (Exam Topic 2)

Which of the following is true about an IP address if the first bit is a one and the second bit is a zero?

- A. The address is a Class A address.
- B. The address is a Class B address.
- C. The address is a Class C address.
- D. The address is a Class D address.

Answer: B

NEW QUESTION 327

- (Exam Topic 2)

Which of the following ports are MOST commonly used to interactively configure a networking device? (Select TWO).

- A. 21
- B. 22
- C. 23
- D. 53
- E. 67

Answer: BC

NEW QUESTION 330

- (Exam Topic 2)

The Transport Layer of the TCP/IP model corresponds to which of the following layers of the OSI model?

- A. 1
- B. 3
- C. 4
- D. 5

Answer: C

NEW QUESTION 335

- (Exam Topic 2)

A technician has replaced the Internet gateway router, and now no users can reach the Internet. The technician can ping the router Ethernet port but not the ISP's router IP address. Which of the following is the MOST likely problem?

- A. Faulty crossover cable
- B. DNS server is down
- C. Switching loop
- D. Outside interface shutdown

Answer: D

NEW QUESTION 338

- (Exam Topic 2)

Which of the following describes a DNS server?

- A. Translates an IP address to a name
- B. Caches commonly viewed web pages
- C. Assigns IP addresses to network devices
- D. Provides port security for a network

Answer: A

NEW QUESTION 341

- (Exam Topic 2)

Which of the following protocols uses port 3389?

- A. IMAP

- B. DHCP
- C. SSH
- D. RDP

Answer: D

NEW QUESTION 346

- (Exam Topic 2)

Which of the following commands will display the associated IP address of a network adapter in Windows and Linux environments? (Select TWO).

- A. dig
- B. nslookup
- C. nbstat
- D. ifconfig
- E. ipconfig

Answer: DE

NEW QUESTION 350

- (Exam Topic 2)

A network technician needs to address bandwidth issues on the wireless network. There are currently four 802.11n access points. The technician would like to increase the bandwidth. Which of the following would be the BEST solution?

- A. Disable SSID
- B. Channel bonding
- C. MIMO
- D. Increase the signal

Answer: B

NEW QUESTION 353

- (Exam Topic 3)

When configuring a wireless access point, Zach, a network administrator, needs to determine the MAC address of a local printer. Which of the following commands would be MOST helpful in determining the MAC address?

- A. ping
- B. arp
- C. route
- D. dig

Answer: B

NEW QUESTION 356

- (Exam Topic 3)

Zach, a technician, suspects a duplicate IP address assignment on the network. Which of the following resources can be used to verify this problem?

- A. Network map
- B. Environmental monitor
- C. Placement map
- D. Syslog

Answer: D

NEW QUESTION 360

- (Exam Topic 3)

A network administrator is troubleshooting an intermittent network issue between devices that have a particularly long cable run. The issue was escalated to a network designer who alluded to potential attenuation issues. Which of the following BEST describes what the network designer was referring to?

- A. Bad connectors
- B. Cross-talk
- C. EMI / Interference
- D. dB loss

Answer: D

NEW QUESTION 364

- (Exam Topic 3)

Kim, a technician, needs to locate a cable in an unorganized wiring closet. Which of the following tools will help her locate the cable?

- A. Protocol analyzer
- B. Cable tester
- C. Toner probe
- D. Punch down tool

Answer: C

NEW QUESTION 365

- (Exam Topic 3)

A company only wants preapproved laptops to be able to connect to a wireless access point. Which of the following should be configured?

- A. SSID disable
- B. ACL rules
- C. WPA encryption
- D. MAC filtering

Answer: D

NEW QUESTION 369

- (Exam Topic 3)

A customer has not been using security on a wireless network and has recently received many attacks through this vector. Which of the following would be the MOST secure way to harden this wireless network?

- A. Disable the SSID
- B. WPA encryption
- C. VLAN implementation
- D. WEP encryption

Answer: B

NEW QUESTION 373

- (Exam Topic 3)

When Jeff, a technician, is troubleshooting a problem, which of the following is the NEXT step after verifying full system functionality?

- A. Establish a plan of action to resolve the problem and identify potential effects.
- B. Implement the solution.
- C. Establish a theory of probable cause.
- D. Document findings, actions, and outcomes.

Answer: D

NEW QUESTION 378

- (Exam Topic 3)

A network technician is installing a simple SOHO router with wireless functionality. Which of the following wireless encryption standards would be BEST suited for the HIGHEST level of security?

- A. WPA2
- B. WPA
- C. WEP64
- D. WEP128

Answer: A

NEW QUESTION 383

- (Exam Topic 3)

Which of the following tools can the technician use to analyze TCP/IP packets when trying to determine a connection problem within a subnet?

- A. Wire mapper
- B. Protocol analyzer
- C. Cable tester
- D. SYSLOG server

Answer: B

NEW QUESTION 385

- (Exam Topic 3)

Which of the following is the correct representation of an IPv6 address?

- A. ::
- B. 0:0:0:0:0:0:0:1
- C. 1:2:3:4:AB:CD:EF
- D. 2001::4860:800f::

Answer: A

NEW QUESTION 387

- (Exam Topic 3)

Zach, a technician, needs to terminate a CAT5e Ethernet cable to a 110 block. Which of the following tools should he use?

- A. Toner probe
- B. Punch down
- C. Wire tester
- D. Crimper

Answer: B

NEW QUESTION 389

- (Exam Topic 3)

Lisa, a network technician, needs to introduce a few more cables to the existing patch panel. Which of the following tools would she use?

- A. OTDR
- B. Multimeter
- C. Punch down tool
- D. Temperature monitor

Answer: C

NEW QUESTION 390

- (Exam Topic 3)

Which of the following 802.11n features allows for the use of multiple simultaneous frequencies in order to increase usable bandwidth?

- A. Channel bonding
- B. MIMO
- C. Spatial reuse
- D. 20MHz channel spacing

Answer: A

NEW QUESTION 393

- (Exam Topic 3)

A user is unable to connect to a server in another building. A technician is troubleshooting the issue and determines the following:

- 1) Client PC 1 has an IP address of 192.168.10.25/25
- 2) PC 1 can successfully ping its gateway of 192.168.10.1/25 which is an interface of router A
- 3) Server A is named 'BLDGBFILESVR01' and has an IP address of 192.168.10.145/25
- 4) PC 2 with an IP address of 192.168.10.200/25 can successfully ping server A

However, when PC 1 pings server A, it receives a destination host unreachable response. Which of the following is the MOST likely cause?

- A. Link from router A to PC 1 are on different subnets
- B. Link from router A to server A is down
- C. Link from PC 1 to router A has duplex issues
- D. Link from server A to PC 2 is down

Answer: A

NEW QUESTION 397

- (Exam Topic 3)

An administrator is setting up a secure wireless network. The administrator decides to support 802.11n and 802.11g with a WPA2 pre-shared key. Users are given the SSID with the pre-shared key, but the administrator has disabled the SSID broadcast and MAC filtering. Some users have reported connection issues. Which of the following would MOST likely resolve the users' connection issues?

- A. Limit the devices to 802.11n only.
- B. Enable the SSID broadcast.
- C. Enable MAC filtering.
- D. Use a WEP 128-bit key.

Answer: B

NEW QUESTION 398

- (Exam Topic 3)

169.254.1.100 is an IP address which would MOST likely come from which of the following?

- A. CIDR
- B. DHCP
- C. APIPA
- D. DNS

Answer: C

NEW QUESTION 399

- (Exam Topic 3)

Zach, a network technician, is unable to remotely manage or ping certain layer 2 switches. To manage those devices remotely, which of the following will MOST likely need to be configured?

- A. IP address on the native VLAN interface
- B. Port security
- C. Port forwarding
- D. IP address on the fiber interface

Answer: A

NEW QUESTION 402

- (Exam Topic 3)

A SOHO with ten Wi-Fi equipped laptops needs a new network installed. Which of the following items would be used to setup the office using a new DSL line? (Select TWO).

- A. Router
- B. Wi-Fi Access point
- C. Cable modem
- D. Ten WiMAX adapters
- E. Ten CAT6 patch cables

Answer: AB

NEW QUESTION 406

- (Exam Topic 3)

An analog POTS voice line is no longer working and Kim, the technician, is tasked to verify if a dial tone is present at the IDF. Which of the following tools would be used?

- A. Protocol analyzer
- B. Butt set
- C. OTDR
- D. Toner probe

Answer: B

NEW QUESTION 411

- (Exam Topic 3)

Zach, a technician, wants to test a laptop's NIC for functionality but has no other networking equipment to attach it to. Which of the following would allow him to test basic functionality of the NIC?

- A. Loopback plug
- B. Protocol analyzer
- C. Smart jack
- D. Coupler

Answer: A

NEW QUESTION 413

- (Exam Topic 3)

Kim, the client, has requested a cost-effective network solution to accommodate the ability to reconfigure the office space as needed. Which networking solution would provide the BEST solution?

- A. Private IP Addressing
- B. Wireless Access Points
- C. Wide Area Networking
- D. Virtual Local Area Networks

Answer: B

NEW QUESTION 417

- (Exam Topic 3)

A technician looks at an ARP table in an attempt to resolve a connectivity issue. After table of the switch is a cleared, a different MAC in the output, Which of the following does this indicate?

- A. ARP flooding
- B. VLAN mismatch
- C. Duplicate IP address
- D. Faulty NIC

Answer: A

NEW QUESTION 419

- (Exam Topic 3)

When using high bandwidth applications over multiple WAN connections, which of the following should be used?

- A. Static IP addressing
- B. Half-duplex
- C. PoE devices
- D. Load balancing

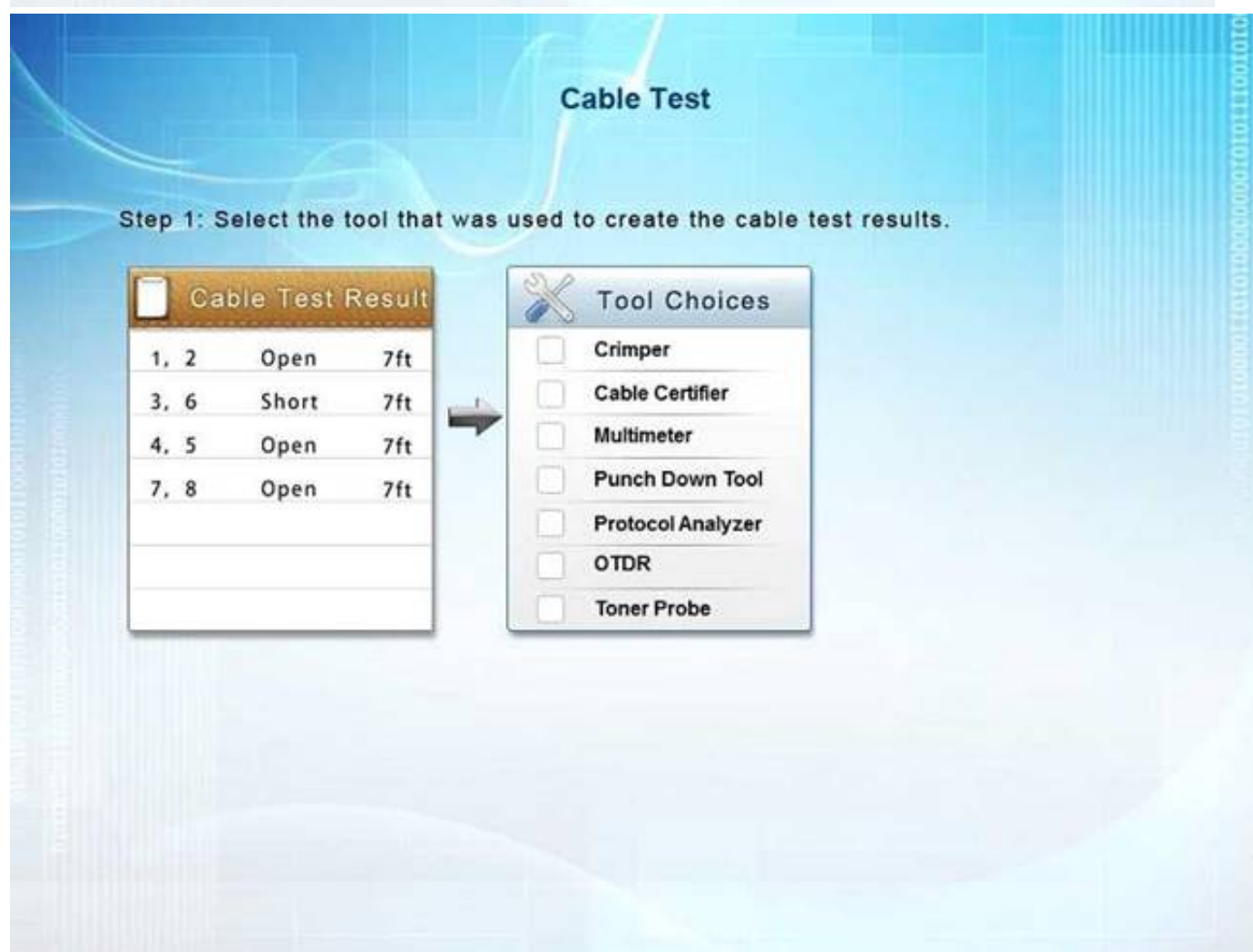
Answer: D

NEW QUESTION 422

- (Exam Topic 3)

You have been tasked with testing a CAT5e cable. A summary of the test results can be found on the screen. Step 1: Select the tool that was used to create the cable test results.

Step 2: Interpret the test results and select the option that explains the results. After you are done with your analysis, click the 'Submit Cable Test Analysis' button.



- A. Mastered
- B. Not Mastered

Answer: A

Explanation:

A Cable Certifier provides “Pass” or “Fail” information in accordance with industry standards but can also show detailed information when a “Fail” occurs. This includes shorts, the wire pairs involved and the distance to the short. When a short is identified, at the full length of the cable it means the cable has not been crimped correctly.

NEW QUESTION 423

- (Exam Topic 3)

A network administrator wants to monitor traffic by deploying MIBs. Which of the follow network monitoring resources would be used?

- A. SCTP
- B. Packet sniffer
- C. DCCP
- D. SNMP

Answer: D

NEW QUESTION 427

- (Exam Topic 3)

Which of the following devices can be used to offload outbound web server SSL encryption overhead?

- A. NIPS
- B. Proxy server
- C. Content filter
- D. VPN connectator

Answer: B

NEW QUESTION 431

- (Exam Topic 3)

A user snapped the retention tab off of a network cable. Which of the following tools would Jeff, a technician, use to replace the RJ-45 connector?

- A. Wire tester
- B. Punch down
- C. Crimper
- D. Multimeter

Answer: C

NEW QUESTION 432

- (Exam Topic 3)

Jeff, a customer, has a wireless network and has reported that the network traffic from the wireless access points seems high compared to the limited number of wireless devices used. Jeff believes that other non-employees are using the wireless network to access the Internet. Which of the following could be used to limit the access to the wireless network? (Select TWO).

- A. WPA encryption
- B. Changing wireless channels
- C. MAC filtering
- D. Changing wireless speed standards
- E. SSID disable

Answer: AC

NEW QUESTION 434

- (Exam Topic 3)

Which of the following protocols is used for remote management of devices?

- A. SNMP
- B. TFTP
- C. Syslog
- D. SMTP

Answer: A

NEW QUESTION 438

- (Exam Topic 3)

A network administrator has created a virtual machine in the cloud. The technician would like to connect to the server remotely using RDP.

Which of the following default ports needs to be opened?

- A. 445
- B. 3389
- C. 5004
- D. 5060

Answer: B

NEW QUESTION 440

- (Exam Topic 3)

Which of the following is used to create a secure connection between a client and a host?

- A. VLAN
- B. Proxy server
- C. IIS server
- D. VPN

Answer: D

NEW QUESTION 444

- (Exam Topic 3)

A network technician configures a firewall to block only certain IP addresses from accessing the Internet. All users are reporting that they are unable to access the Internet.

Which of the following is the MOST likely reason?

- A. Incorrectly configured ACL
- B. Implicit allow statement
- C. SMTP requests are being denied
- D. All protocols are being allowed in

Answer: A

NEW QUESTION 446

- (Exam Topic 3)

The software in a virtualized environment that controls resource allocation and allows multiple operating system guests to run on the same physical platform is known as the:

- A. hypervisor.
- B. LPAR.
- C. broker.
- D. VDI.

Answer: A

NEW QUESTION 450

- (Exam Topic 3)

An administrator is troubleshooting analog telephony issues on the punch down block. Which of the following tools would be MOST useful in this scenario?

- A. T1 loopback
- B. Butt set
- C. Multimeter
- D. Protocol analyzer

Answer: B

NEW QUESTION 452

- (Exam Topic 3)

A junior technician is settings up a voice control device so the Chief Executive Officer (CEO) will able to control various things in the office. Of which of the following types of the IoT technologies is this an example?

- A. LAN
- B. WAN
- C. SAN
- D. PAN

Answer: B

NEW QUESTION 456

- (Exam Topic 3)

Kim, a network administrator, is seeing workstations in building C authenticate to the building A wireless access point. Which of the following would resolve this issue?

- A. Change the security method
- B. Reduce the transmission power
- C. Change the SSID
- D. Change the frequency

Answer: B

NEW QUESTION 461

- (Exam Topic 3)

Which of the following technologies allows for redundant links within a Layer 2 segment?

- A. OSPF
- B. RIP
- C. Port Mirroring
- D. Spanning Tree

Answer: D

NEW QUESTION 464

- (Exam Topic 3)

Jeff, a user, is having a problem with a POTS line. Which of the following tools would Jeff use to make sure the phone lines have a dial tone?

- A. Loopback plugs
- B. Butt set
- C. Cable certifier
- D. Toner probe

Answer: B

NEW QUESTION 466

- (Exam Topic 3)

ADSL modem connects to the provider's network using which of the following authentication techniques?

- A. PoE
- B. MS-CHAP
- C. PPPoE
- D. EAP

Answer: C

NEW QUESTION 468

- (Exam Topic 3)

A network technician at a small office upgrades the VLAN switch. After the upgrade, a user reports being unable to access network resources. When the technician checks the switchport, the LED light is not lit. Which of the following should technician check FIRST?

- A. The device is using the correct cable type.
- B. The switchport is functioning properly.
- C. The device is connected to the switch.
- D. The switch is connected to the router.

Answer: C

NEW QUESTION 472

- (Exam Topic 3)

Which of the following devices is used to distribute network traffic equally over multiple links?

- A. Content filter
- B. DNS server
- C. Load balancer
- D. Proxy server

Answer: C

NEW QUESTION 477

- (Exam Topic 3)

A technician needs to test the length of a newly installed cable run because it is believed that it exceeds the maximum specification length. Which of the following tools should be used?

- A. Cable certifier
- B. Toner probe
- C. Cable tester
- D. Protocol analyzer

Answer: A

NEW QUESTION 479

.....

Thank You for Trying Our Product

* 100% Pass or Money Back

All our products come with a 90-day Money Back Guarantee.

* One year free update

You can enjoy free update one year. 24x7 online support.

* Trusted by Millions

We currently serve more than 30,000,000 customers.

* Shop Securely

All transactions are protected by VeriSign!

100% Pass Your N10-007 Exam with Our Prep Materials Via below:

<https://www.certleader.com/N10-007-dumps.html>