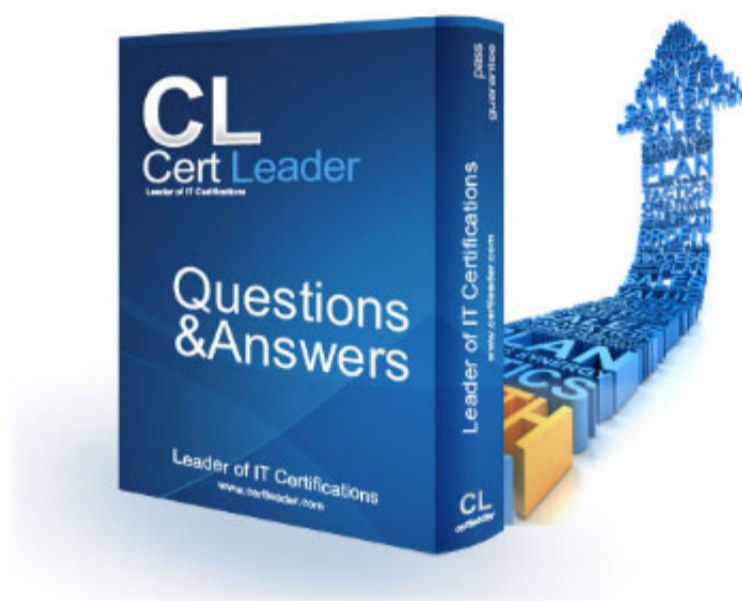


70-537 Dumps

Configuring and Operating a Hybrid Cloud with Microsoft Azure Stack Exam

<https://www.certleader.com/70-537-dumps.html>



NEW QUESTION 1

You deploy a new Azure Stack integrated system.

You plan to add several Marketplace items from Microsoft Azure to the Azure Stack Marketplace. You need to ensure that you can download the Marketplace items from Azure.

Solution: You run the MarketplaceToolkit.ps1 script. Does this meet the goal?

- A. YES
- B. NO

Answer: B

NEW QUESTION 2

You have an Azure Stack integrated system that uses a Microsoft Azure Active Directory (Azure AD) domain named contoso.com as the identity provider. The system has a tenant subscription that contains several resources.

In contoso.com, you create a new user named User1.

User 1 reports that when signed in to the Azure Stack user portal, no resources are displayed. You need to ensure that User1 can view the resources on the portal.

Solution: On the tenant Subscription, you assign the Reader role to User1. Does this meet the goal?

- A. Yes
- B. No

Answer: A

Explanation: A user needs at least the reader role to be able to view resources in a tenant subscription.

NEW QUESTION 3

You have an Azure Stack integrated system that uses a Microsoft Azure Active Directory (Azure AD) domain named contoso.com as the identity provider. The system has a tenant subscription that contains several resources.

In contoso.com, you create a new user named User1.

User 1 reports that when signed in to the Azure Stack user portal, no resources are displayed. You need to ensure that User1 can view the resources on the portal.

Solution: On the Default Provider Subscription, you assign a role to User1. Does this meet the goal?

- A. Yes
- B. No

Answer: B

Explanation: There are two portals in Azure Stack; the administrator portal and the user portal (sometimes referred to as the tenant portal.)

The Default Provider Subscription is the administrator portal. The user needs to be assigned a role in the tenant (user) subscription, not the Default Provider (admin) subscription.

References:

<https://docs.microsoft.com/en-us/azure/azure-stack/azure-stack-manage-portals>

NEW QUESTION 4

You plan to create a Linux virtual machine on an Azure Stack integrated system.

You download an Ubuntu Server image.

Which authentication method can use to access the Linux virtual machine by using SSH?

- A. a service principal
- B. Microsoft Hello for Business
- C. a password
- D. OAuth

Answer: C

NEW QUESTION 5

HOTSPOT

You have an Azure Stack integrated system that uses a namespace of fabrikam.onnncrosoft.com. A company named

Answer:

Explanation: References: <https://docs.microsoft.com/en-us/azure/azure-stack/azure-stack-enable-multitenancy>

NEW QUESTION 6

You have an Azure Stack integrated system that has a SQL Server resource provider. You have an Azure Resource Manager template named Template1.

You need to validate whether Template1 can be deployed to the system. Which cmdlet should you run before you run Test-AzureRMTemplate?

- A. Get-AzureDeployment
- B. Get-AzsResourceProviderManifest
- C. Get-RmsTemplates
- D. Get-AzureRMCloudCapability

Answer: D

Explanation: <https://docs.microsoft.com/en-us/azure/azure-stack/user/azure-stack-validate-templates>

NEW QUESTION 7

You plan to automate the deployment of Azure Stack resources by using a script. The script will run by using a security principal named ScriptUser1. The script will run daily and will be used to assign users the ability to create resources within newly created resource groups. You need to assign an RBAC role to ScriptUser1. The solution must minimize administrative privileges. Which RBAC role should you assign?

- A. subscription Owner
- B. resource group Contributor
- C. subscription Contributor
- D. resource group Owner

Answer: D

NEW QUESTION 8

Your network contains an Active Directory forest named adatum.com. You deploy an Azure Stack integrated system. You implement federation between adatum.com and Azure Slack. You need to ensure that a user named admin01@adatum.com can manage all aspects of Azure Stack from administrator portal. Which cmdlet should you run?

- A. New-CloudAdminUser
- B. Set-ServiceAdminOwner
- C. Set-AzsUserSubscription
- D. Set-CloudAdminPassword

Answer: B

Explanation: References:
<https://docs.microsoft.com/en-us/azure/azure-stack/azure-stack-integrate-identity>

NEW QUESTION 9

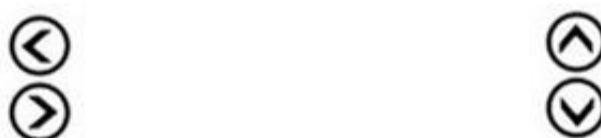
DRAG DROP

A developer uses an offline Azure Stack Development Kit to develop Azure Marketplace items. After the developer makes several modifications, the development kit becomes unavailable. You need to redeploy the development kit to the same physical hosts. Which four actions should you perform in sequence? To answer, move the appropriate actions from the list of actions to the answer area and arrange them in the correct order.

Actions

- Run the `InstallAzureStackPOC.ps1` script and specify the `-Rerun` parameter.
- Replace the `CloudBuilder.vhdx` file.
- Start the computer from `CloudBuilder.vhdx`.
- Run the `asdk-installer.ps1` script.
- Run the `Add-AzsRegistration` cmdlet.
- Start the host from the base operating system.

Answer Area



Answer:

Explanation: Run the `asdk-installer.ps1` script
Run the host from base operating system
Replace the `C:\CloudBuilder.vhdx` file
Start the computer from `CloudBuilder.vhdx` <https://docs.microsoft.com/en-us/azure/azure-stack/asdk/asdk-redeploy>

NEW QUESTION 10

You have an Azure Stack integrated system.

What are three possible types of records that you can create in Azure Stack DNS? Each correct answer presents a complete solution.

NOTE: Each correct selection is worth one point.

- A. NSEC
- B. PTR
- C. SRV
- D. MX
- E. AAA

Answer: BCD

Explanation: <https://docs.microsoft.com/en-us/azure/dns/dns-zones-records> <https://docs.microsoft.com/en-us/azure/azure-stack/user/azure-stack-dns>

NEW QUESTION 10

Your company has a Microsoft Azure subscription that contains that tenants configured as shown in the following table.

| Tenant name | IP address range | Internal namespace | Number of virtual machines | Number of virtual networks |
|-------------|------------------|--------------------|----------------------------|----------------------------|
| Tenant 1 | 192.168.1.0/24 | Contoso.com | 24 | 5 |
| Tenant 2 | 192.168.1.0/24 | Contoso.com | 30 | 4 |

You plan to recreate both tenants in an Azure Stack integrated system. The tenants will be configured to use the DNS service provided by Azure Stack. Which tenant configuration should you modify to ensure that the tenants can be deployed to Azure Stack?

- A. the number of virtual machines
- B. the number of virtual workers
- C. the internal namespace
- D. the IP address range

Answer: A

NEW QUESTION 11

You implement an Azure Stack integrated system.

You receive the following service Fabric warning alert: "The infrastructure role FabricResourceProvider is experiencing issues."

You contact Microsoft support and are instructed to modify the configuration of the Azure Stack integrated system.

You successfully modify the configuration. You need to restart the Azure Stack integrated system. What should you do first?

- A. Connect to the Azure Resource Manager administrative endpoint.
- B. Connect to the privileged endpoint.
- C. From the Azure Stack administrator portal, stop the infrastructure role.
- D. From the Azure Stack administrator portal, restart the infrastructure role.

Answer: D

NEW QUESTION 13

You have an Azure Stack integrated system.

You receive a Storage Resource Provider alert indicating that a file share named SUI_ObjStore_4 on a volume named ObjStore_4 is more than 90 percent utilized.

You verify that none of the storage accounts were recently deleted. You need to remediate the storage usage issue as quickly as possible.

What should you do first?

- A. From the Azure Resource Manager user endpoint, run start-AzsReclaimStorageCapacity.
- B. From the Azure Stack administrator portal, modify the retention period.
- C. From the Azure Stack administrator portal, restart the storage controller infrastructure role.
- D. Contact Microsoft Support.

Answer: A

Explanation: <https://docs.microsoft.com/en-us/azure/azure-stack/azure-stack-manage-storage-accounts#reclaim>

NEW QUESTION 18

You implement an Azure Stack integrated system.

You need to identify the lowest amount of file share usage that will trigger a file capacity alert. Which amount should you identify?

- A. 70%
- B. 80%
- C. 90%
- D. 95%

Answer: C

NEW QUESTION 21

Note: This question is part of a series of questions that use the same scenario. For your convenience,

the scenario is repeated in each question. Each question presents a different goal and answer choices, but the text of the scenario is exactly the same in each question in this series.

Start of repeated scenario.

Your network contains an Active Directory forest named contoso.com

You deploy an Azure Stack integrated system named Prod to a production environment. You also deploy an Azure Stack integrated system named Dev to a development environment. The developers who access Dev change frequently.

The Azure Stack integrated systems and the contoso.com forest are federated.

The on-premises network contains a Hyper-V host that hosts a Red Hat Enterprise Linux virtual machine named Linux1. Linux1 has the following characteristics:

A 2-TB disk Generation 1

10 virtual cores 128 GB of RAM

A disk named LinuxVhd.vhdx

You plan to deploy infrastructure as a service (IaaS) to Dev for developer projects. The Marketplace on Dev is configured and ready to publish items. Dev contains one plan named Dev_Plan1 and one offer named Dev_Offer1.

Prod contains two plans and two offers. One of the offers is named Offer1.

All the IaaS and platform as a service (PaaS) tenant data must be backed up to an external location. The solution must ensure that the data can be restored if the datacenter that hosts Prod becomes unavailable.

End of repeated scenario.

You discovered that the developers of Dev have been testing the application on prod. You need to remove all the resource on prod consumed by Dev developers. Which cmdlet should you run?

- A. Remove-AztenantSubscription
- B. remove-AzsSubscription
- C. Remove-AzsLocation D.Remove-Azsoffer

Answer: A

NEW QUESTION 23

You deploy an Azure Stack integrated system. The system contains several tenants that use infrastructure as a service (IaaS) virtual machines. You need to recommend a solution to ensure that if a datacenter fails, you can start the virtual machines as quickly as possible. What should you include in the recommendation?

- A. Microsoft Azure Backup
- B. Microsoft Azure Site Recovery
- C. blob snapshots
- D. file-snapshot backups

Answer: B

NEW QUESTION 26

You have an Azure Stack Development Kit deployment.

You receive a Storage Resource Provider alert indicating that a file share named SUI_ObjStore_4 on a volume named ObjStore_4 is more than 80 percent utilized. You verify that none of the storage accounts were recently deleted. You need to remediate the alert as quickly as possible.

Which two actions should you perform?

- A. From the Azure Stack administrator portal, restart the infrastructure role.
- B. From the Azure Stack Resource Manager user endpoint, run Start-AzsReclaimStorageCapacity.
- C. From the Azure Stack Resource Manager administrator endpoint, migrate a container from the SUI_ObjStore_4 file share to a file share on a different volume.
- D. From the Azure Stack user portal, delete a storage account.
- E. From the Azure stack administrator portal modify the retention period.

Answer: AB

NEW QUESTION 27

You have an Azure Stack integrated system.

You receive a storage alert that a tenant share is at 80 percent capacity. There are multiple container in the tenant share.

You verify that there are no delete storage accounts.

You need to increase the amount of space available on the tenant share. Which cmdlet Should run?

- A. start-AzsStorageContainerMigration
- B. Set-AzsStorageQuota
- C. Remove-AzsStorageQuota D.Start-AzsReclaimStoragecapacity

Answer: B

NEW QUESTION 28

You manage an Azure Stack integrated system.

You plan to query the usage data of Azure Stack.

Which three parameters can you use in the query? Each correct answer presents a complete solution.

Note: select: Each correct selection is worth one point.

- A. usageEndtime
- B. meterId
- C. reportedStarttime
- D. usageStarttime
- E. aggregationGranularity
- F. reportedEndtime

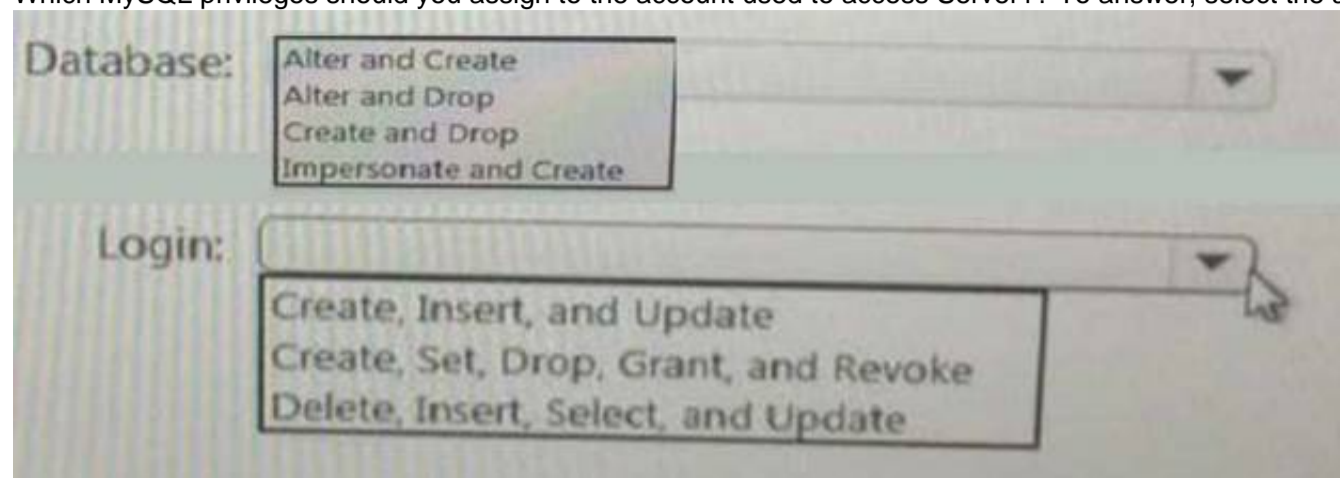
Answer: ACF

NEW QUESTION 31

HOTSPOT

You implement a MySQL resource provider on an Azure Stack integrated system. You install a new server named Server1 that hosts MySQL. You need to add Server1 as a hosting server to the resource provider.

Which MySQL privileges should you assign to the account used to access Server1? To answer, select the appropriate options in the answer area.



Answer:

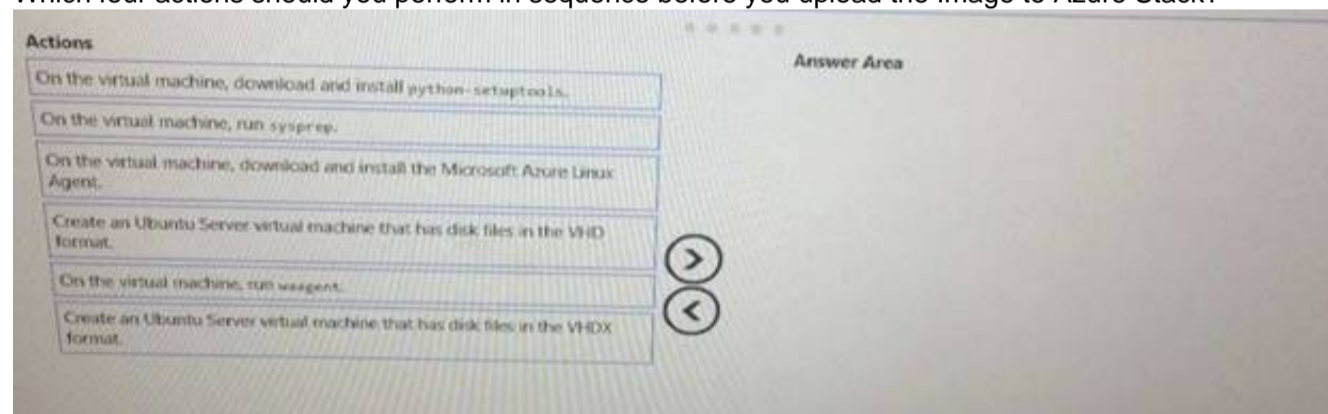
Explanation: Database: create, drop
Login: create, set, drop, grant, revoke

NEW QUESTION 34

DRAG DROP

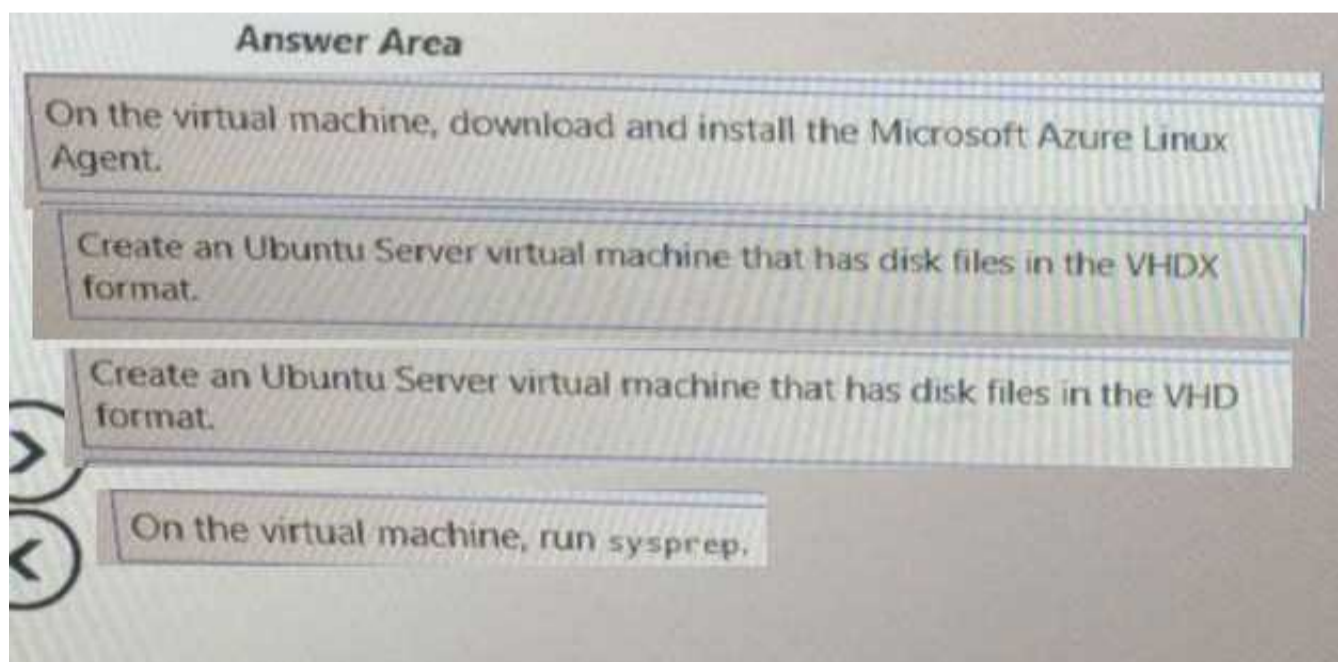
You manage an Azure Stack integrated system. You plan to make an Ubuntu Server image available to the Azure Stack tenants. You need to prepare the custom Ubuntu Server image.

Which four actions should you perform in sequence before you upload the Image to Azure Stack?



Answer:

Explanation:



NEW QUESTION 35

You manage an Azure Stack integrated system that is accessed by using the URLs of <https://adminportal.east.azurestackfabrikam.com> and <https://portal.east.azurestack.fabrikam.com>. The fabrikam.com domain contains a Linux server named Server1 that has MySQL installed. You implement a MySQL resource provider on the system.

You need to ensure that tenants can provision MySQL database. What should you do next?

- A. From <https://portal.east.azurestack.fabrikam.com>, download the MySQL connector binary.
- B. From <https://adminportal.east.azurestack.fabrikam.com>, add a MySQL hosting server.
- C. From <https://portal.east.azurestack.fabrikam.com>, add a MySQL hosting server.
- D. From <https://adminportal.east.azurestack.fabrikam.com>, download the MySQL connector binary

Answer: C

Explanation: Hosting servers that are installed on Azure Stack integrated systems must be created from a tenant subscription. They cannot be created from the default provider subscription.

References: <https://docs.microsoft.com/en-us/azure/azure-stack/azure-stack-mysql-resource-provider-deploy>

NEW QUESTION 38

You have an Azure Stack integrated system that has a file server running on a virtual machine used by the App Service resource provider. You need to increase the amount of memory on the file server. Which command should you run?

- A. az vm resize
- B. az apservice plan update
- C. az vm update
- D. az apservice plan create

Answer: A

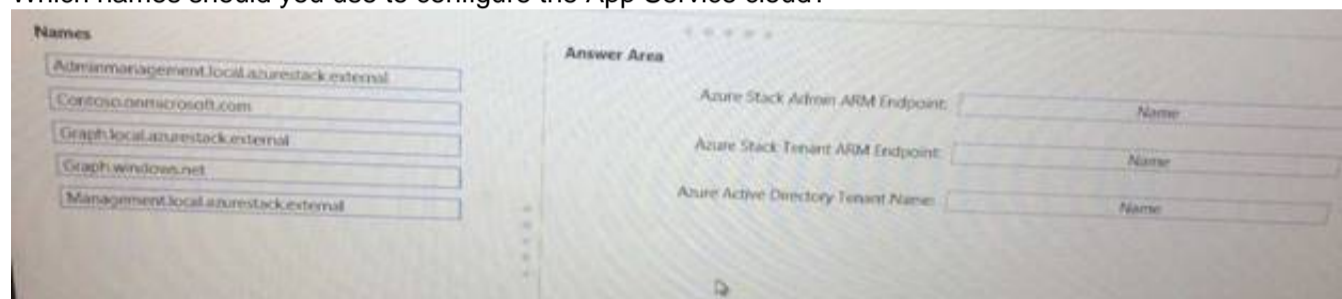
NEW QUESTION 43

DRAG DROP

You have an Azure Stack Development Kit deployment that uses a Microsoft Azure Active Directory (Azure AD) domain named contoso.onmicrosoft.com for authentication.

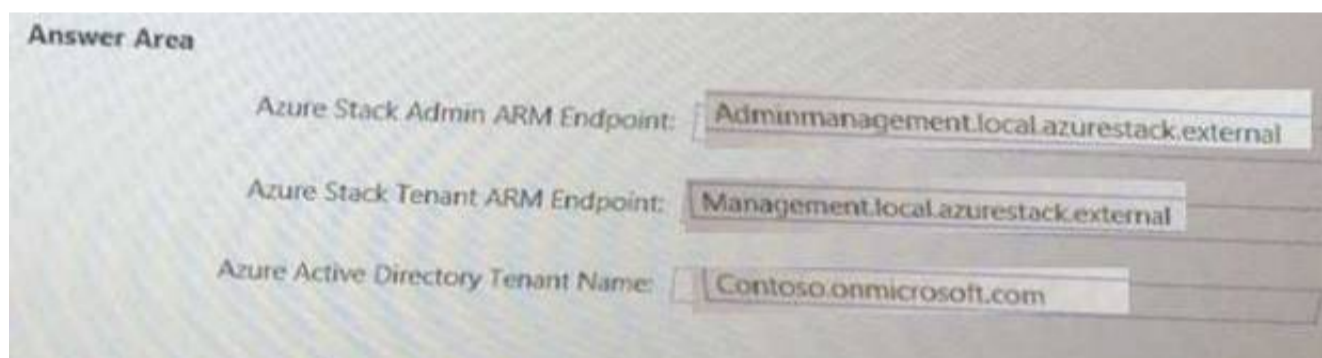
You need to install the App Service resource provider.

Which names should you use to configure the App Service cloud?



Answer:

Explanation:



NEW QUESTION 45

NOTE: This question is part of a series of questions that present the same scenario. Each question in the series contains a unique solution that might meet the stated goals. Some question sets might have more than one correct solution, while others might not have a correct solution.

After you answer a question in this section, you will NOT be able to return to it. As a result, these questions will not appear in the review screen.

You have an Azure Stack integrated system that runs in a connected environment.

You need to recommend an interval for installing Microsoft software update packages to Azure Stack. The solution must ensure that you can receive Microsoft support.

Solution: You recommend that Microsoft software updates be installed every 12 months. Does this meet the goal?

- A. Yes
- B. No

Answer: B

Explanation: For your Azure Stack deployment to remain in support, it must run the most recently released update version or run either of the two preceding update versions.

Microsoft will release update packages for Azure Stack integrated systems on a regular cadence that will typically fall on the fourth Tuesday of every month. Thus to remain in support you must be running one of the last three update versions and, as an update version is released every month, you need to install updates at least every three months. References:

<https://docs.microsoft.com/en-us/azure/azure-stack/azure-stack-servicing-policy> <https://docs.microsoft.com/en-us/azure/azure-stack/azure-stack-updates>

NEW QUESTION 47

NOTE: This question is part of a series of questions that present the same scenario. Each question in the series contains a unique solution that might meet the stated goals. Some question sets might have more than one correct solution, while others might not have a correct solution.

After you answer a question in this section, you will NOT be able to return to it. As a result, these questions will not appear in the review screen.

You have an Azure Stack integrated system that runs in a connected environment.

You need to recommend an interval for installing Microsoft software update packages to Azure Stack. The solution must ensure that you can receive Microsoft support.

Solution: You recommend that Microsoft software updates be installed every three months. Does this meet the goal?

- A. Yes
- B. No

Answer: A

Explanation: For your Azure Stack deployment to remain in support, it must run the most recently released update version or run either of the two preceding update versions.

Microsoft will release update packages for Azure Stack integrated systems on a regular cadence that will typically fall on the fourth Tuesday of every month. Thus to remain in support you must be running one of the last three update versions and, as an update version is released every month, you need to install updates at least every three months. References:

<https://docs.microsoft.com/en-us/azure/azure-stack/azure-stack-servicing-policy> <https://docs.microsoft.com/en-us/azure/azure-stack/azure-stack-updates>

NEW QUESTION 49

You have an Azure Stack integrated system that has 100 tenants. You create a new offer that is Private. You need to provide the offer to a tenant. What should you do?

- A. Delegate rights to the tenant user, and then instruct the tenant user to create a new subscription.
- B. Create a new subscription, and then assign the subscription to the tenant.
- C. Run the New-AzsOffer cmdlet, and then specify the tenant user account.
- D. Run the Set-AzsUserSubscription cmdlet, and then specify the subscription of the tenant user.

Answer: B

Explanation: When you create an offer, you must include at least one base plan, but you can also create add-on plans that users can add to their subscription. A subscription is how users access your offers.

After you create an offer, users need a subscription to that offer before they can use it.

You can create subscriptions for both public and private offers. If do not want your tenants to create their own subscriptions, make all of your offers private, and then create subscriptions on behalf of your tenants. This approach is common when integrating Azure Stack with external billing or service catalog systems.

After you create a subscription for a user, that user can log into the user portal and will find that they are subscribed to the offer.

Incorrect Answers:

A: As the Azure Stack operator, you can delegate the creation of offers and users to other users by using the delegation functionality.

C: The New-AzsOffer cmdlet creates an offer composing of the specified base plans and add-on plans.

D: The Set-AzsSubscription cmdlet modifies the current logged-in user's tenant subscription. References:

<https://docs.microsoft.com/en-us/azure/azure-stack/azure-stack-delegated-provider> <https://docs.microsoft.com/en-us/azure/azure-stack/azure-stack-delegated-provider>

<https://docs.microsoft.com/en-us/azure/azure-stack/azure-stack-delegated-provider>

<https://docs.microsoft.com/en-us/azure/azure-stack/azure-stack-delegated-provider>

<https://docs.microsoft.com/en-us/azure/azure-stack/azure-stack-delegated-provider>

NEW QUESTION 50

You have an Azure Stack integrated system.

A tenant requires assistance managing a subscription.

The tenant needs to create a custom RBAC role definition. What should you instruct the tenant to do?

- A. Establish a PowerShell session to the Azure Resource Manager (user) endpoint. Run the New-AzureRmPolicySetDefinition cmdlet and the New-AzureRoleTemplate cmdlet.
- B. Establish a PowerShell session to the Azure Resource Manager (user) endpoint. Create a JSON file that contains the permission definition
- C. Run the New-AzureRmRoleDefinition cmdlet.
- D. Establish a PowerShell session to the Azure Resource Manager (administrator) endpoint. Create an XML file that contains the permission definition
- E. Run the New-AzureRmRoleDefinition cmdlet
- F. Establish a PowerShell session to the Azure Resource Manager (administrator) endpoint
- G. Run the New-AzureRmPolicySetDefinition cmdlet and the New-AzureRoleTemplate cmdlet.

Answer: B

Explanation: The New-AzureRmRoleDefinition cmdlet creates a custom role in Azure Role-Based Access Control. Provide a role definition as an input to the command as a JSON file or a PSRoleDefinition object. Incorrect Answers:

A: New-AzureRoleTemplate creates web and worker role templates. This has nothing to do with RBAC.

C: The permission definitions should be contained in a JSON file, not an XML file.

D: New-AzureRoleTemplate creates web and worker role templates. This has nothing to do with RBAC.

References:

<https://docs.microsoft.com/en-us/powershell/module/azurerms/resources/new-azurermroledescription?view=azurermps-6.2.0>

NEW QUESTION 53

You have an Azure Stack integrated system.

You plan to use the Marketplace publishing tool.

Which two parameters should you specify when you run the tool? Each correct answer presents part of the solution.

NOTE: Each correct selection is worth one point.

- A. the Service Admin credentials
- B. the Azure Resource Manager endpoint
- C. the privileged endpoint
- D. a backup location for AzureDeploy.json
- E. the cloud administrator credentials

Answer: AB

Explanation: References: <https://docs.microsoft.com/en-us/azure/azure-stack/azure-stack-marketplace-publisher#publish-marketplace-items>

NEW QUESTION 55

Note: This question is part of a series of questions that use the same scenario. For your convenience, the scenario is repeated in each question. Each question presents a different goal and answer choices, but the text of the scenario is exactly the same in each question in this series.

Start of repeated scenario.

Your company has a main office in New York and a branch office in Toronto. Each office has a dedicated connection to the Internet. Each office has a firewall that uses inbound and outbound rules.

The company has an on-premises network that contains several datacenters. The datacenters contain multiple hypervisor deployments, including Windows Server 2016 Hyper-V. The network uses Microsoft System Center for monitoring and Windows Azure Pack for self-service.

The company has a Microsoft Azure subscription that contains several workloads. You use Azure Resource Manager templates and other automated processes to create and manage the resources in Azure.

You have an Azure Stack integrated system in the New York office. The company has a deployment team in the Toronto office and a development team in the New York office. The system has an offer named Offer1. Several tenants have subscriptions based on Offer1.

You have a Hyper-V host named Server1 that runs Windows Server 2012 R2. Server1 is used for testing. The hardware on Server1 can support the deployment of the Azure Stack Development Kit. You have a Generation 1 virtual machine named VM1 that runs Windows Server 2012 R2. VM1 is deployed to a Hyper-V host that runs Windows Server 2016. VM1 has a fixed size disk named VM1.vhdx that is 200 GB.

End of repeated scenario.

You need to ensure that you can import VM1 to Azure Stack.

What should you do?

- A. Recreate VM1 as a Generation 2 virtual machine.
- B. Convert the disk to a VHD.
- C. Convert the disk to a dynamically expanding disk.
- D. Upgrade VM1 to Windows Server 2016.

Answer: B

Explanation: Azure supports only generation 1 VMs that are in the VHD file format and have a fixed sized disk. The maximum size allowed for the VHD is 1,023 GB. You can convert a generation 1 VM from the VHDX file system to VHD and from a dynamically expanding disk to fixed-sized. But you can't change a VM's generation.

Incorrect Answers:

A: Azure supports only generation 1 VMs that are in the VHD file format.

C: Azure Stack does not support dynamic VHDXs. Resizing a virtual machine (VM) with a dynamic disk attached to it leaves the VM in a failed state.

References:

<https://docs.microsoft.com/en-za/azure/virtual-machines/windows/prepare-for-upload-vhd-image> <https://docs.microsoft.com/en-us/azure/azure-stack/azure-stack-update-1802>

NEW QUESTION 59

Note: This question is part of a series of questions that use the same scenario. For your convenience, the scenario is repeated in each question. Each question presents a different goal and answer choices, but the text of the scenario is exactly the same in each question in this series.

Start of repeated scenario.

Your company has a main office in New York and a branch office in Toronto. Each office has a dedicated connection to the Internet. Each office has a firewall that uses inbound and outbound rules.

The company has an on-premises network that contains several datacenters. The datacenters contain multiple hypervisor deployments, including Windows Server 2016 Hyper-V. The network uses Microsoft System Center for monitoring and Windows Azure Pack for self-service.

The company has a Microsoft Azure subscription that contains several workloads. You use Azure Resource Manager templates and other automated processes to create and manage the resources in Azure.

You have an Azure Stack integrated system in the New York office. The company has a deployment team in the Toronto office and a development team in the New York office. The system has an offer named Offer1. Several tenants have subscriptions based on Offer1.

You have a Hyper-V host named Server1 that runs Windows Server 2012 R2. Server1 is used for testing. The hardware on Server1 can support the deployment of the Azure Stack Development Kit. You have a Generation 1 virtual machine named VM1 that runs Windows Server 2012 R2. VM1 is deployed to a Hyper-V host that runs Windows Server 2016. VM1 has a fixed size disk named VM1.vhdx that is 200 GB.

End of repeated scenario.

You implement a SQL Server resource provider that uses D14v2 virtual machines.

A tenant creates a SQL database that runs several heavy workloads. The tenant reports that SQL queries are slow to complete.

You need to recommend changes to the Azure Stack integrated system to reduce the amount of time required to complete the SQL queries.

What should you recommend?

- A. Resize the virtual machine that provides the Microsoft SQL Server service.
- B. Instruct the tenant to install Microsoft SQL Server on a virtual machine in its subscription.
- C. In the Azure Stack integrated system, cluster the D14v2 virtual machines.
- D. Deploy a physical server that has more resources than the D14v2 virtual machine.
- E. Install Microsoft SQL Server on the server.
- F. Add the server to the SQL Server resource provider.

Answer: D

NEW QUESTION 60

You have an Azure Stack integrated system that uses Microsoft Azure Active Directory (Azure AD) for authentication. The system uses an external domain named cloud.contoso.com.

You plan to provide tenant users with the ability to provision App Services and to use Kudu to develop the App Services.

You need to create the Azure AD application for the planned deployment. What should you do?

- A. Run the Add-AzsRegistration cmdlet.
- B. From <https://portal.cloud.contoso.com>, create an App Service offer.
- C. Run the Create-AADIdentityApp.ps1 script.

- D. From <https://portal.azure.com>, modify the permissions of the Azure AD application.
- E. Run the Add-AzsRegistration cmdle
- F. From <https://portal.azure.com>, create a new App Service Environment.
- G. Run the Create-AADIdentityApp.ps1 scrip
- H. From <https://portal.cloud.contoso.com>, create an App Service offer.

Answer: D

NEW QUESTION 63

You have an Azure Stack integrated system.

You need to view the public IP address used by tenants. The solution must include the list of dynamically and statically assigned IP addresses.

Which blade should you review from the Azure Stack administrator portal?

- A. Offers
- B. Resource providers > Health
- C. Virtual networks
- D. Resource providers > Network

Answer: D

Explanation: References: <https://docs.microsoft.com/en-us/azure/azure-stack/azure-stack-viewing-public-ip-address-consumption>

NEW QUESTION 66

You have an Azure Stack integrated system.

What are three source control providers that you can use for App Services? Each correct answer presents a complete solution.

NOTE: Each correct selection is worth one point.

- A. Mercurial
- B. DropBox
- C. software version control (SVC)
- D. BitBucket
- E. OneDrive

Answer: BDE

Explanation: In addition to local Git, the following Source Control Providers are supported: GitHub

BitBucket OneDrive DropBox

References: <https://docs.microsoft.com/en-us/azure/azure-stack/azure-stack-app-service-configure-deployment-sources>

NEW QUESTION 71

You have an Azure Stack integrated system.

You implement an App Service resource provider. Your network contains a load balancer.

You plan to use the load balancer to load balance SSL traffic to web apps that are provisioned based on the App Services.

You need to configure the IP SSL settings of the App Service resource provider. Which configuration should you use for the internal HTTPS port?

- A.
 - VIP address 192.168.100.100 and TCP 443
 - VIP address 192.168.100.101 and TCP 443
- B.
 - VIP address 192.168.100.100 and TCP 443
 - VIP address 192.168.100.101 and TCP 444
- C.
 - VIP address 192.168.100.100 and TCP 443
 - VIP address 192.168.100.100 and TCP 444
- D.
 - VIP address 192.168.100.100 and TCP 443
 - VIP address 192.168.100.101 and TCP 4444

- A. Option A
- B. Option B
- C. Option C
- D. Option D

Answer: A

NEW QUESTION 76

You have an Azure Stack integrated system.

You establish a PowerShell session to a privileged endpoint, and you run several commands. You need to ensure that logs of the session activity are exported to a file share.

Which cmdlet should you run?

- A. Exit
- B. Clear-Host
- C. Out-Default

- D. Close-PrivilegedEndpoint
- E. Exit-PSSession

Answer: D

Explanation: The privileged endpoint logs every action (and its corresponding output) that you perform in the PowerShell session. You must close the session by using the Close-PrivilegedEndpoint cmdlet. This cmdlet correctly closes the endpoint, and transfers the log files to an external file share for retention. Incorrect Answers:

A, E: If you close the privileged endpoint session by using the cmdlets Exit-PSSession or Exit, or you just close the PowerShell console, the transcript logs do not transfer to a file share. They remain in the privileged endpoint. The next time you run Close-PrivilegedEndpoint and include a file share, the transcript logs from the previous session(s) will also transfer.

References: <https://docs.microsoft.com/en-us/azure/azure-stack/azure-stack-privileged-endpoint#close-the-privileged-endpoint-session>

NEW QUESTION 78

You have an Azure Stack integrated system that has the following deployment details:

Region: East Naming prefix: azs

External domain name: cloud.fabrikam.com

Which URL should you direct tenants to use based on the deployment details?

- A. <https://adminportal.cloud.fabrikam.com>
- B. <https://portal.east.cloud.fabrikam.com>
- C. <https://portal.azs.cloud.fabrikam.com>
- D. <https://adminportal.azs.cloud.fabrikam.com>
- E. <https://portal.cloud.fabrikam.com>
- F. <https://adminportal.east.cloud.fabrikam.com>

Answer: B

NEW QUESTION 82

You plan to deploy an Azure Stack integrated system to host applications on the Internet.

Which network from the Azure Stack deployment should be routed beyond the border device?

- A. the switch network
- B. the private VIP network
- C. the storage network
- D. the public VIP network

Answer: D

Explanation: References:

<https://docs.microsoft.com/en-us/azure/azure-stack/azure-stack-network>

NEW QUESTION 87

You have an Azure Stack integrated system that has several tenants. You back up the tenant data.

You need to provide a backup solution for the Azure Stack infrastructure. What should you do first?

- A. From Microsoft Azure Backup, create a backup.
- B. On a file server, create an SMB share.
- C. Replicate the virtual machines in the infrastructure by using Microsoft Azure Site recovery.
- D. From Microsoft System Center Data Protection Manager, create a backup job.

Answer: B

Explanation: References:

<https://docs.microsoft.com/en-us/azure/azure-stack/azure-stack-backup-infrastructure-backup#verify-requirements-for-the-infrastructure-backup-service>

NEW QUESTION 91

You have an Azure Stack integrated system.

You discover that a hardware failure occurred on a node named Node1. You need to power off Node1.

Which cmdlet should you run?

- A. Stop-HpcAzureNode
- B. Disable-AzsScaleUnitNode
- C. Shutdown-HpcNode
- D. Stop-AzsScaleUnitNode

Answer: D

Explanation: References: <https://docs.microsoft.com/en-us/azure/azure-stack/azure-stack-node-actions>

NEW QUESTION 92

You have an Azure integrated system.

You receive a storage alert that a tenant share is at 80 percent capacity. There are multiple containers

in the tenant's share.

You verify that there are no deleted storage accounts.

You need to increase the amount of space availability on the tenant share. Which cmdlet should you run?

- A. Start-AzsReclaimStorageCapacity
- B. Start-AzsStorageContainerMigration
- C. Set-AzsStorageQuota
- D. Remove-AzsStorageQuota

Answer: C

NEW QUESTION 95

DRAG DROP

You have an Azure Stack integrated system that uses the external domain name of fabrikam.com. You need to publish an Azure Marketplace Package (.azpkg) file to the Marketplace.

Which three actions should you perform in sequence? To answer, move the appropriate actions from the list of actions to the answer area and arrange them in the correct order.

| Actions | Answer Area |
|--|--|
| From https://portal.fabrikam.com, create a blob container that has a Private access policy. | <div style="display: flex; align-items: center; justify-content: center;"> <div style="border-left: 1px solid black; height: 100px; margin-right: 10px;"></div> <div style="display: flex; flex-direction: column; align-items: center; gap: 10px;"> <div style="border: 1px solid gray; border-radius: 50%; width: 30px; height: 30px; display: flex; align-items: center; justify-content: center;">⬅</div> <div style="border: 1px solid gray; border-radius: 50%; width: 30px; height: 30px; display: flex; align-items: center; justify-content: center;">➡</div> </div> <div style="border: 1px solid gray; border-radius: 50%; width: 30px; height: 30px; display: flex; align-items: center; justify-content: center;">⬆</div> <div style="border: 1px solid gray; border-radius: 50%; width: 30px; height: 30px; display: flex; align-items: center; justify-content: center;">⬇</div> </div> |
| From https://adminportal.fabrikam.com, upload the Azure Marketplace Package. | |
| From a PowerShell session, connect to https://adminmanagement.fabrikam.com and run Add-AzureRMGalleryItem. | |
| From a PowerShell session, connect to https://adminportal.fabrikam.com and run New-AzureRmOffer. | |
| From https://adminportal.fabrikam.com, create a blob container that has a Blob access policy. | |
| From https://portal.fabrikam.com, upload the Azure Marketplace Package. | |

Answer:

Explanation:

Answer Area

From https://adminportal.fabrikam.com, create a blob container that has a Blob access policy.

From https://adminportal.fabrikam.com, upload the Azure Marketplace Package.

From a PowerShell session, connect to https://adminmanagement.fabrikam.com and run Add-AzureRMGalleryItem.

NEW QUESTION 100

DRAG DROP

You have an application that runs on Microsoft Azure.

You need to implement the application on an Azure Stack integrated system.

You verify that all the services used by the application are available in Azure Stack.

Which three actions should you perform in sequence? To answer, move the appropriate actions from the list of actions to the answer area and arrange them in the correct order.

| Actions | Answer Area |
|---|-------------|
| Export the automation script for the application to an XML file. | |
| Create a solution package. | |
| Set the target location of the application to null and set the API version. | |
| Export the automation script for the application to a JSON file. | |
| Set the target location of the application to local and set the API version. | |

Answer:

Explanation:

Answer Area

| |
|---|
| Create a solution package. |
| Set the target location of the application to local and set the API version. |
| Export the automation script for the application to a JSON file. |

NEW QUESTION 103

HOTSPOT

Note: This question is part of a series of questions that use the same scenario. For your convenience, the scenario is repeated in each question. Each question presents a different goal and answer choices, but the text of the scenario is exactly the same in each question in this series.

Start of repeated scenario.

Your company has a main office in New York and a branch office in Toronto. Each office has a dedicated connection to the Internet. Each office has a firewall that uses inbound and outbound rules.

The company has an on-premises network that contains several datacenters. The datacenters contain multiple hypervisor deployments, including Windows Server 2016 Hyper-V. The network uses Microsoft System Center for monitoring and Windows Azure Pack for self-service.

The company has a Microsoft Azure subscription that contains several workloads. You use Azure Resource Manager templates and other automated processes to create and manage the resources in Azure.

You have an Azure Stack integrated system in the New York office. The company has a deployment team in the Toronto office and a development team in the New York office. The system has an offer named Offer1. Several tenants have subscriptions based on Offer1.

You have a Hyper-V host named Server1 that runs Windows Server 2012 R2. Server1 is used for testing. The hardware on Server1 can support the deployment of the Azure Stack Development Kit. You have a Generation 1 virtual machine named VM1 that runs Windows Server 2012 R2. VM1 is deployed to a Hyper-V host that runs Windows Server 2016. VM1 has a fixed size disk named VM1.vhdx that is 200 GB.

End of repeated scenario.

You need to provide a new user with the ability to generate support session tokens when troubleshooting Azure Stack issues with Microsoft Support.

What should you do? To answer, select the appropriate options in the answer area. NOTE: Each correct selection is worth one point.

Answer Area

Establish a PowerShell remoting session to :

| |
|---|
| ▼ |
| A hardware lifecycle host |
| A network controller |
| A privileged endpoint |
| An infrastructure management controller |

Run the following cmdlet:

| |
|---------------------------------|
| ▼ |
| New-ADServiceAccount |
| New-AzureBridgeServicePrincipal |
| New-CloudAdminUsers |
| New-LocalUser |

Answer:

Explanation:

Establish a PowerShell remoting session to :

| |
|---|
| ▼ |
| A hardware lifecycle host |
| A network controller |
| A privileged endpoint |
| An infrastructure management controller |

Run the following cmdlet:

| |
|--|
| ▼ |
| New-ADServiceAccount |
| New-AzureBridgeServicePrincipal |
| New-CloudAdminUsers |
| New-LocalUser |

NEW QUESTION 104

DRAG DROP

Note: This question is part of a series of questions that use the same scenario. For your convenience, the scenario is repeated in each question. Each question presents a different goal and answer choices, but the text of the scenario is exactly the same in each question in this series.

Start of repeated scenario.

Your company has a main office in New York and a branch office in Toronto. Each office has a dedicated connection to the Internet. Each office has a firewall that uses inbound and outbound rules.

The company has an on-premises network that contains several datacenters. The datacenters contain multiple hypervisor deployments, including Windows Server 2016 Hyper-V. The network uses Microsoft System Center for monitoring and Windows Azure Pack for self-service.

The company has a Microsoft Azure subscription that contains several workloads. You use Azure Resource Manager templates and other automated processes to create and manage the resources in Azure.

You have an Azure Stack integrated system in the New York office. The company has a deployment team in the Toronto office and a development team in the New York office. The system has an offer named Offer1. Several tenants have subscriptions based on Offer1.

You have a Hyper-V host named Server1 that runs Windows Server 2012 R2. Server1 is used for testing. The hardware on Server1 can support the deployment of the Azure Stack Development Kit. You have a Generation 1 virtual machine named VM1 that runs Windows Server 2012 R2. VM1 is deployed to a Hyper-V host that runs Windows Server 2016. VM1 has a fixed size disk named VM1.vhdx that is 200 GB.

End of repeated scenario.

You need to deploy the Azure Stack Deployment Kit to Server1 to meet the following requirements: Implement the solution as quickly as possible.

Enable the syndication of Azure Marketplace items.

Ensure that the deployment is isolated from the existing environment.

Which four actions should you perform in sequence? To answer, move the appropriate actions from the list of actions to the answer area and arrange them in the correct order.

NOTE: More than one order of answer choices is correct. You will receive credit for any of the correct orders you select.

Actions

Answer area

Configure the development kit to use the Azure Active Directory (Azure AD) tenant from the Azure subscription of the company.

Run the `Add-AzsRegistration` cmdlet.

On Server1, install Windows Server 2016 and the latest updates.

Prepare a VHDX named `Cloudbuilder.vhdx`, and then deploy the development kit.

Create a trial Azure subscription, and then use the new Azure Active Directory (Azure AD) tenant to register Azure Stack.

On Server1, download the deployment package for the development kit.

Answer:

Explanation:

Answer area

On Server1, install Windows Server 2016 and the latest updates.

On Server1, download the deployment package for the development kit.

Prepare a VHDX named `Cloudbuilder.vhdx`, and then deploy the development kit.

Create a trial Azure subscription, and then use the new Azure Active Directory (Azure AD) tenant to register Azure Stack.

NEW QUESTION 107

HOTSPOT

You are preparing a Linux image for upload to Azure Stack. You need to install the Microsoft Azure Linux Agent manually. You install the `python-setuptools`. Which command should you run next? To answer, select the appropriate options in the answer area. NOTE: Each correct selection is worth one point.

Answer Area

| | | |
|--|---|-------------------------------|
| <pre>sudo</pre> <div style="border: 1px solid gray; padding: 2px; width: 150px;"> <p>▼</p> <p>apt-get</p> <p>python3</p> <p>yum</p> </div> | <pre>setup.py</pre> <div style="border: 1px solid gray; padding: 2px; width: 150px;"> <p>▼</p> <p>install</p> <p>python-setuptools</p> <p>update</p> </div> | <pre>--register-service</pre> |
|--|---|-------------------------------|

Answer:

Explanation: References: <https://docs.microsoft.com/en-us/azure/azure-stack/azure-stack-linux#prepare-your-own-image>

NEW QUESTION 112

HOTSPOT

Your company has a DNS domain named contoso.com.

You have a new Azure Stack integrated system that has the following deployment details: Region: West

Naming prefix: as1

Internal domain name: azurestack.local External domain name: cloud.contoso.com

You need to create a DNS delegation for the system.

How should you configure the delegation? To answer, select the appropriate options in the answer area.

NOTE: Each correct selection is worth one point.

Zone to delegate:

| |
|-----------------------|
| ▼ |
| As1.cloud.contoso.com |
| Azurestack.local |
| Cloud.contoso.com |
| West.azurestack.local |
| West.contoso.com |

FQDN of a name server:

| |
|---------------------------------|
| ▼ |
| As1.azurestack.local |
| As1-ns01.west.cloud.contoso.com |
| Dns1.contoso.com |
| Ns01.cloud.contoso.com |

Answer:

Explanation: References:

<https://docs.microsoft.com/en-us/azure/azure-stack/azure-stack-integrate-dns#>

NEW QUESTION 115

You have an Azure Stack integrated system that uses the external domain name of west.fabrikam.com.

You plan to create an Azure Marketplace package.

Which API endpoint must you use to publish the package?

- A. management.west.fabrikam.com
- B. <https://graph.windows.net/>
- C. <https://graph.west.fabrikam.com/>
- D. mydomain.onmicrosoft.com

Answer: A

Explanation: References:

<https://docs.microsoft.com/en-us/azure/azure-stack/azure-stack-marketplace-publisher>

NEW QUESTION 117

Note: This question is part of a series of questions that use the same scenario. For your convenience, the scenario is repeated in each question. Each question presents a different goal and answer choices, but the text of the scenario is exactly the same in each question in this series.

Start of repeated scenario.

Your company has a network that contains an Active Directory forest named fabrikam.com. The forest is synchronized to a Microsoft Azure Active Directory (Azure AD) tenant and has an Azure subscription.

The company also has an Azure AD tenant named contoso.com. Contoso.com has an Azure subscription. Contoso.com includes foreign principals.

The network contains the computers configured as shown in the following table.

| Computer name | Operating system | Configuration |
|---------------|--------------------------------|---|
| Server1 | Windows Server 2016 Datacenter | Hyper-V host that hosts two test virtual machines |
| Server2 | Windows Server 2016 Datacenter | Microsoft SQL Server 2016 server primary replica of an Always On availability group in a cluster named Cluster1 |
| Server3 | Windows Server 2016 Datacenter | Microsoft SQL Server 2016 server, secondary replica of an Always On availability group in Cluster1 |
| Server4 | Windows Server 2016 Datacenter | Member of Cluster1 |
| Server5 | Windows Server 2016 Datacenter | File server |
| Client1 | Windows 10 Enterprise | Privileged access workstation |

Fabrikam.com contains a user named User1.
 For operating system deployment, the company uses a custom operating system image of Windows Server 2016 Datacenter named Image1.
 You have an Azure Stack integrated system that is accessed by using the following endpoints: <https://portal.fabrikam.com>
<https://adminportal.fabrikam.com>
<https://management.fabrikam.com> Privileged endpoint: 192.168.100.100 Hardware lifecycle host: 192.168.101.101 <https://adminmanagement.fabrikam.com>
 You onboard contoso.com as a guest directory tenant on the Azure Stack integrated system. You implement in the following Azure Stack providers:
 SQL Server App Service
 End of repeated scenario.
 You need to ensure that all the services hosted in Azure Stack can resolve the names configured in contoso.com.
 Which cmdlet should you run?

- A. Add-DnsServerConditionalForwarderZone
- B. New-AzureRmDnsZone
- C. Register-CustomDnsServer
- D. Set-AzureRmDnsRecordSet

Answer: C

Explanation: References:
<https://docs.microsoft.com/en-us/azure/azure-stack/azure-stack-integrate-dns>

NEW QUESTION 120

DRAG DROP

Note: This question is part of a series of questions that use the same scenario. For your convenience, the scenario is repeated in each question. Each question presents a different goal and answer choices, but the text of the scenario is exactly the same in each question in this series.

Start of repeated scenario.

Your company has a network that contains an Active Directory forest named fabrikam.com. The forest is synchronized to a Microsoft Azure Active Directory (Azure AD) tenant and has an Azure subscription.

The company also has an Azure AD tenant named contoso.com. Contoso.com has an Azure subscription. Contoso.com includes foreign principals.

The network contains the computers configured as shown in the following table.

| Computer name | Operating system | Configuration |
|---------------|--------------------------------|---|
| Server1 | Windows Server 2016 Datacenter | Hyper-V host that hosts two test virtual machines |
| Server2 | Windows Server 2016 Datacenter | Microsoft SQL Server 2016 server primary replica of an Always On availability group in a cluster named Cluster1 |
| Server3 | Windows Server 2016 Datacenter | Microsoft SQL Server 2016 server, secondary replica of an Always On availability group in Cluster1 |
| Server4 | Windows Server 2016 Datacenter | Member of Cluster1 |
| Server5 | Windows Server 2016 Datacenter | File server |
| Client1 | Windows 10 Enterprise | Privileged access workstation |

Fabrikam.com contains a user named User1.
 For operating system deployment, the company uses a custom operating system image of Windows Server 2016 Datacenter named Image1.
 You have an Azure Stack integrated system that is accessed by using the following endpoints: <https://portal.fabrikam.com>
<https://adminportal.fabrikam.com> <https://management.fabrikam.com> Privileged endpoint: 192.168.100.100 Hardware lifecycle host: 192.168.101.101
<https://adminmanagement.fabrikam.com>
 You onboard contoso.com as a guest directory tenant on the Azure Stack integrated system. You implement in the following Azure Stack providers:
 SQL Server App Service
 End of repeated scenario.
 You need to ensure that tenants can use Image1 to deploy virtual machines.
 Which three actions should you perform from <https://adminportal.fabrikam.com> in sequence? To answer, move the appropriate actions from the list of actions to the answer area and arrange them in the correct order.

Actions

Delegate the Subscription resource provider.

Create an offer.

Create a Marketplace item.

Add the image to the Compute resource provider.

Upload the image to a blob container.

Answer Area

⬅
➡

⬆
⬇

Answer:

Explanation:

Answer Area

Upload the image to a blob container.

Add the image to the Compute resource provider.

Create a Marketplace item.

⬅
➡

⬆
⬇

NEW QUESTION 121

Note: This question is part of a series of questions that use the same scenario. For your convenience, the scenario is repeated in each question. Each question presents a different goal and answer choices, but the text of the scenario is exactly the same in each question in this series.

Start of repeated scenario.

Your company has a network that contains an Active Directory forest named fabrikam.com. The forest is synchronized to a Microsoft Azure Active Directory (Azure AD) tenant and has an Azure subscription.

The company also has an Azure AD tenant named contoso.com. Contoso.com has an Azure subscription. Contoso.com includes foreign principals.

The network contains the computers configured as shown in the following table.

| Computer name | Operating system | Configuration |
|---------------|--------------------------------|---|
| Server1 | Windows Server 2016 Datacenter | Hyper-V host that hosts two test virtual machines |
| Server2 | Windows Server 2016 Datacenter | Microsoft SQL Server 2016 server primary replica of an Always On availability group in a cluster named Cluster1 |
| Server3 | Windows Server 2016 Datacenter | Microsoft SQL Server 2016 server, secondary replica of an Always On availability group in Cluster1 |
| Server4 | Windows Server 2016 Datacenter | Member of Cluster1 |
| Server5 | Windows Server 2016 Datacenter | File server |
| Client1 | Windows 10 Enterprise | Privileged access workstation |

Fabrikam.com contains a user named User1.

For operating system deployment, the company uses a custom operating system image of Windows Server 2016 Datacenter named Image1.

You have an Azure Stack integrated system that is accessed by using the following endpoints: <https://portal.fabrikam.com>

https://adminportal.fabrikam.com https://management.fabrikam.com Privileged endpoint: 192.168.100.100 Hardware lifecycle host: 192.168.101.101
https://adminmanagement.fabrikam.com

You onboard contoso.com as a guest directory tenant on the Azure Stack integrated system. You implement in the following Azure Stack providers:
SQL Server App Service
End of repeated scenario.

You need to ensure that the foreign principals for contoso.com can access Azure Stack services. Which URL should the foreign principals use to sign in to Azure Stack?

- A. https://portal.fabrikam.com
- B. https://ads.fabrikam.com/contoso.com
- C. https://portal.fabrikam.com/contoso.com
- D. https://adminportal.fabrikam.com/contoso.com

Answer: C

NEW QUESTION 124

HOTSPOT

Note: This question is part of a series of questions that use the same scenario. For your convenience, the scenario is repeated in each question. Each question presents a different goal and answer choices, but the text of the scenario is exactly the same in each question in this series.

Start of repeated scenario.

Your company has a network that contains an Active Directory forest named fabrikam.com. The forest is synchronized to a Microsoft Azure Active Directory (Azure AD) tenant and has an Azure subscription.

The company also has an Azure AD tenant named contoso.com. Contoso.com has an Azure subscription. Contoso.com includes foreign principals.

The network contains the computers configured as shown in the following table.

| Computer name | Operating system | Configuration |
|---------------|--------------------------------|---|
| Server1 | Windows Server 2016 Datacenter | Hyper-V host that hosts two test virtual machines |
| Server2 | Windows Server 2016 Datacenter | Microsoft SQL Server 2016 server primary replica of an Always On availability group in a cluster named Cluster1 |
| Server3 | Windows Server 2016 Datacenter | Microsoft SQL Server 2016 server, secondary replica of an Always On availability group in Cluster1 |
| Server4 | Windows Server 2016 Datacenter | Member of Cluster1 |
| Server5 | Windows Server 2016 Datacenter | File server |
| Client1 | Windows 10 Enterprise | Privileged access workstation |

Fabrikam.com contains a user named User1.

For operating system deployment, the company uses a custom operating system image of Windows Server 2016 Datacenter named Image1.

You have an Azure Stack integrated system that is accessed by using the following endpoints: https://portal.fabrikam.com

https://adminportal.fabrikam.com https://management.fabrikam.com Privileged endpoint: 192.168.100.100 Hardware lifecycle host: 192.168.101.101

https://adminmanagement.fabrikam.com

You onboard contoso.com as a guest directory tenant on the Azure Stack integrated system. You implement in the following Azure Stack providers:

SQL Server App Service

End of repeated scenario.

You need to configure the App Service resource provider to offer the Small worker tier to tenants. What should you do? To answer, select the appropriate options in the answer area.

NOTE: Each correct selection is worth one point.

Answer Area

Connect to a URL of:

| |
|----------------------------------|
| ▼ |
| https://192.168.100.100 |
| https://adminportal.fabrikam.com |
| https://portal.fabrikam.com |

Create an instance of:

| |
|----------------------------|
| ▼ |
| The Controller role |
| The Front End role |
| The Management Server role |
| The Publisher role |
| The Web Worker role |

Answer:

Explanation:

Answer Area

Connect to a URL of:

| | |
|---|---|
| | ▼ |
| https://192.168.100.100 | |
| https://adminportal.fabrikam.com | |
| https://portal.fabrikam.com | |

Create an instance of:

| | |
|-----------------------------------|---|
| | ▼ |
| The Controller role | |
| The Front End role | |
| The Management Server role | |
| The Publisher role | |
| The Web Worker role | |

NEW QUESTION 126

.....

Thank You for Trying Our Product

* 100% Pass or Money Back

All our products come with a 90-day Money Back Guarantee.

* One year free update

You can enjoy free update one year. 24x7 online support.

* Trusted by Millions

We currently serve more than 30,000,000 customers.

* Shop Securely

All transactions are protected by VeriSign!

100% Pass Your 70-537 Exam with Our Prep Materials Via below:

<https://www.certleader.com/70-537-dumps.html>