

70-740 Dumps

Installation, Storage, and Compute with Windows Server 2016

<https://www.certleader.com/70-740-dumps.html>



NEW QUESTION 1

You have a Windows Server 2016 failover Cluster named Cluster 1 that contains four nodes named Server1, Server2, Server3, and Server4.

You need to configure Cluster to use directly attached storage to store several virtual machines. You run the Enable-ClusterStorageSpacesDirect cmdlet on Server1.

What should you do next?

- A. Run the Enable-ClusterStorageSpacesDirect cmdlet on the other three nodes.
- B. Create volumes.
- C. Create storage pool.
- D. Add-ClusterResource cmdlet on all of the nodes.

Answer: B

Explanation:

References:

<https://medium.com/beyond-the-helpdesk/setting-up-and-configuring-storage-spaces-direct-in-windows-server-2016-4d2be85a8f7d>

NEW QUESTION 2

You have a Hyper-V host named Server1 that runs Windows Server 2016. Server1 hosts a virtual machine named VM1 that runs Windows Server 2016.

On VM1, Dynamic Memory is disabled, MAC spoofing is enabled for the virtual network adapter, and checkpoints are disabled. You need to ensure that you can install the Hyper-V server role on VM1. What should you do?

- A. Shut down VM1, enable Dynamic Memory on VM1 and then start VM1.
- B. Configure VM1 to use standard checkpoints.
- C. Disable Hyper-V integration services for VM1 and then restart VM1.
- D. Shut down VM1, run the Set-VMProcessor cmdlet and then start VM1.

Answer: D

Explanation:

References:

<https://docs.microsoft.com/en-us/virtualization/hyper-v-on-windows/user-guide/nested-virtualization>

NEW QUESTION 3

You have a server named Server1 that runs Windows Server 2016. Windows Defender is enabled on Server1.

Server1 runs an application named App1 that stores various types of files in Microsoft OneDrive for Business, Microsoft OneDrive, and Microsoft SharePoint Online. App1 also interacts with several local services.

You need to prevent Windows Defender from scanning any files opened by App1. What should you do on Server1?

- A. From the Windows Defender settings, configure a file exclusion.
- B. Run the New-ClPolicy cmdlet.
- C. Modify the real-time protection settings in Windows Defender.
- D. From the Windows Defender settings, configure a process exclusion.

Answer: A

NEW QUESTION 4

You have a Hyper-V server named Server1 that runs Windows Server 2012 R2.

Server1 hosts a virtual machine named VM1 that runs Windows Server 2016. VM1 connects to an external virtual switch named Switch1.

You can ping VM1 from Server1.

You upgrade Server1 to Windows Server 2016.

You need to ensure that you can connect to VM1 by using PowerShell Direct. What should you do?

- A. Configure the firewall rules on Server1.
- B. Enable the Hyper-V extensible switch extensions on Server1.
- C. Upgrade the configuration version of VM1.
- D. Configure the firewall rules on VM1.

Answer: C

NEW QUESTION 5

You have a Nano Server named Nano1.

Which cmdlet should you use to identify whether the DNS Server role is installed on Nano1?

- A. Find-NanoServerPackage
- B. Get-Package
- C. Find-Package
- D. Get-WindowsOptionalFeature

Answer: B

NEW QUESTION 6

DRAG DROP

You are deploying DirectAccess to a server named DA1. DA1 will be located behind a firewall and will have a single network adapter. The intermediary network will be IPv4.

You need to configure firewall to support DirectAccess.

Which firewall rules should you create for each type of traffic? To answer, drag the appropriate ports and protocols to the correct traffic types. Each port and protocol may be used once, more than once, or not at all. You may need to drag the split bar between panes or scroll to view content

Ports and Protocols		Answer Area	
IP protocol ID 1	IP Protocol ID 41	Teredo traffic:	
TCP 443	UDP 3544	6to4 traffic:	
		IP-HTTPS:	

- A. Mastered
- B. Not Mastered

Answer: A

Explanation:

Ports and Protocols		Answer Area	
IP protocol ID 1	IP Protocol ID 41	Teredo traffic:	UDP 3544
TCP 443	UDP 3544	6to4 traffic:	IP Protocol ID 41
		IP-HTTPS:	TCP 443

NEW QUESTION 7

You have a Nano Server named Nano1.
You deploy several containers to Nano1 that use an image named Image1. You need to deploy a new container to Nano1 that uses Image1.
What should you run?

- A. the Install-NanoServerPackage cmdlet
- B. theInstall-WindowsFeaturecmdlet
- C. the docker load command
- D. the docker run command

Answer: D

NEW QUESTION 8

You have a Hyper-V host named Served That runs Windows Server 2016
Server1 has a virtual machine named VM1 VM1 is configured to run the Docker daemon. On VM1 you have a container network that uses transparent mode
You need to ensure that containers that run on VM1 can obtain IP addresses from DHCP. What should you do?

- A. On VM1, rundocker network connect
- B. On Server1 runGet-VMNetworkAdapter-VMName VM1| Set-VMNetworkAdapter- MacAddressSpoofing On
- C. On Server1, rundocker network connect
- D. On VM1, runGet-VMNetworkAdapter-VMName VM1| Set-VMNetworkAdapter- MacAddressSpoofing On.

Answer: D

NEW QUESTION 9

DRAG DROP

You have a server that runs Windows Server 2016 You install three additional physical disks named Disk1. Disk2. and Disk3 You plan to use these physical disks to store data

You need to create a volume to store data The solution must prevent data loss in the event of a single disk failure

Which three actions should you perform in sequence'? To answer, move the appropriate actions from the list of actions to the answer area and arrange them in the correct order

Create a Virtual Disk.

Create a Storage Pool.

Create a new Storage Tier.

Create a Volume.

Assign a Storage Tier to a virtual disk.

Create a Virtual Disk Clone.

>

<

- A. Mastered
- B. Not Mastered

Answer: A

Explanation:

Create a Storage Pool.

Create a Virtual Disk.

Create a Volume.

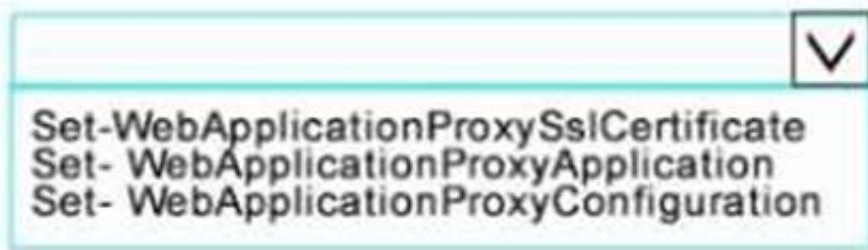
NEW QUESTION 10

HOTSPOT

You have a server named Server1 that runs Windows Server 2016 Server1 has the Web Application Proxy role service installed

You publish an application named App1 by using the Web Application Proxy.

You need to change the URL that users use to connect to App1 when they work remotely. Which command should you run? To answer, select the appropriate options in the answer area



-ID 874A4543-7983-77A3-1E6D-1163E7419AC1

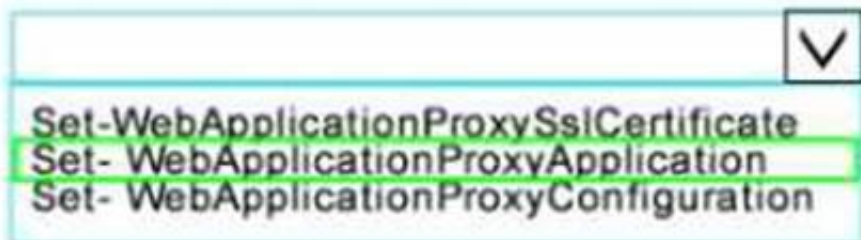


https://SP.Contoso.com

- A. Mastered
- B. Not Mastered

Answer: A

Explanation:



-ID 874A4543-7983-77A3-1E6D-1163E7419AC1



https://SP.Contoso.com

NEW QUESTION 10

You have a failover cluster named Cluster1.

A virtual machine named VM1 is a highly available virtual machine that runs on Cluster1. A custom application named App1 runs on VM1.

You need to configure monitoring of VM1. If App1 adds an error entry to the Application event log, VM1 should be automatically rebooted and moved to another cluster node.

Which tool should you use?

- A. Hyper-V Manager
- B. Failover Cluster Manager
- C. Server Manager
- D. Resource Monitor

Answer: B

NEW QUESTION 12

You are configuring a Windows Server 2016 failover cluster in a workgroup.

Before installing one of the nodes, you run the `ipconfig /all` command and receive the following output:


```
Windows IP Configuration

Host Name . . . . . : Server1
Primary Dns Suffix . . . . . :
Node Type . . . . . : Hybrid
IP Routing Enabled. . . . . : No
WINS Proxy Enabled. . . . . : No
DNS Suffix Search List. . . . . :

Ethernet adapter Ethernet:

Connection-specific DNS Suffix . :
Description . . . . . : Microsoft Hyper-V Network Adapter
Physical Address. . . . . : 00-15-5D-01-62-17
DHCP Enabled. . . . . : Yes
Autoconfiguration Enabled . . . . : Yes
Link-local IPv6 Address . . . . . : fe80::7548:46d8:8ffc:d5ab%17(Preferred)
IPv4 Address. . . . . : 192.168.1.154(Preferred)
Subnet Mask . . . . . : 255.255.255.0
Default Gateway . . . . . : 192.168.1.10
DHCPv6 Iaid . . . . . : 369099429
DHCPv6 Client DUID. . . . . : 00-01-00-01-1A-1D-5D-60-00-02-A5-4E-F4-85
DNS Servers . . . . . : 192.168.1.32
NetBIOS over Tcpip. . . . . : Disabled
```

You need to ensure that Server 1 can be added as a node in the cluster What should you do?

- A. Assign a static IP address
- B. Change the Node Type to Broadcast
- C. Configure a DNS suffix
- D. Enable NetBIOS over TCP/IP

Answer: C

NEW QUESTION 14

HOTSPOT

Your network contains an Active Directory forest named contoso.com. The forest contains an Active Directory Federation Services (AD FS) farm.

You install Windows Server 2016 on a server named Server2

You need to configure Server2 as a node in the federation server farm

Which cmdlets should you run? To answer, select the appropriate options in the answer area

First cmdlet to run:

Install-AdfsFarm
Install-Package
Install-WindowsFeature

Second cmdlet to run:

Install-AdfsFarm
New-AdfsOrganization
Set-AdfsFarmInformation
Set-AdfsProperties

- A. Mastered
- B. Not Mastered

Answer: A

Explanation:

First cmdlet to run:

▼

Install-AdfsFarm

Install-Package

Install-WindowsFeature

Second cmdlet to run:

▼

Install-AdfsFarm

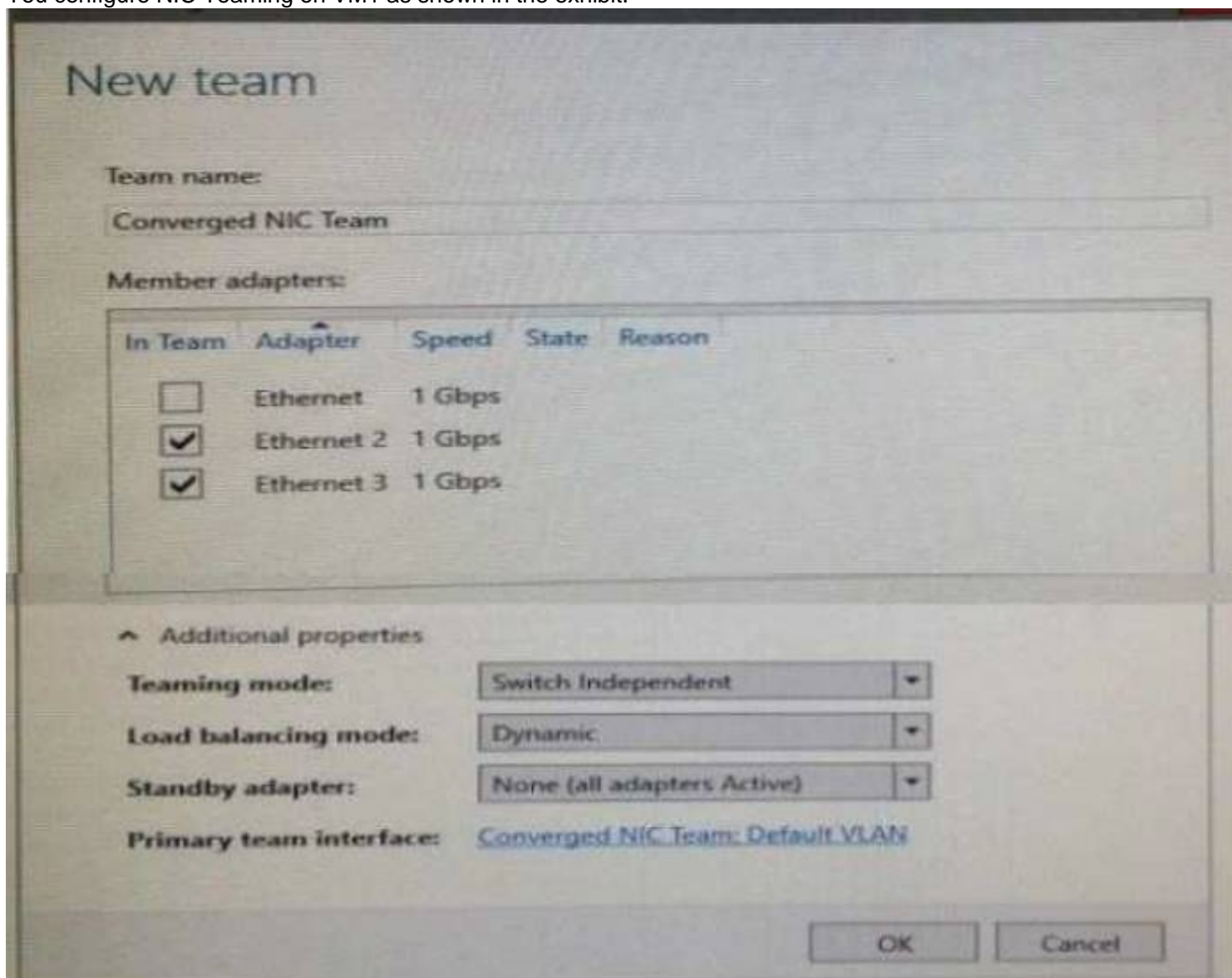
New-AdfsOrganization

Set-AdfsFarmInformation

Set-AdfsProperties

NEW QUESTION 15

You have a server named Server1 that runs Windows Server 2016. Server1 is a Hyper-V host that hosts a virtual machine named VM1. Server1 has three network adapter cards That connect to a virtual switch named vSwitch1. You configure NIC Teaming on VM1 as shown in the exhibit.



You need to ensure that VM1 will retain access to the network if a physical adapter card fails on Server1. What should you do?

- A. From Hyper-V Manager on Server1, modify the settings of VM1.
- B. From Windows PowerShell on Server1, run the Set-VmSwitchcmdlet.
- C. From the properties of the NIC team on VM1, add the adapter named Ethernet to the NIC team.
- D. From the properties of the NIC team on VM1, change the load balancing of the NIC team.

Answer: A

NEW QUESTION 18

HOTSPOT

You have a machine named VM1 that runs Windows Server 2016. VM1 is a Remote Desktop Services (RDS) server. You need to ensure that only TCP port 3389 can be used to connect to VM1 over the network. Which command should you run on the Hyper-V host? To answer, select the appropriate options in the answer area.

▼

Add-VmNetworkAdapterAcl
Add-VmNetworkAdapterExtendedAcl
Set-VmNetworkAdapter
Set-VmNetworkAdapterRoutingDomain
Mapping

-VMName VM1 -Direction

▼

Inbound
Outbound

- A. Mastered
B. Not Mastered

Answer: A

Explanation:

▼

Add-VmNetworkAdapterAcl
Add-VmNetworkAdapterExtendedAcl
Set-VmNetworkAdapter
Set-VmNetworkAdapterRoutingDomain
Mapping

-VMName VM1 -Direction

▼

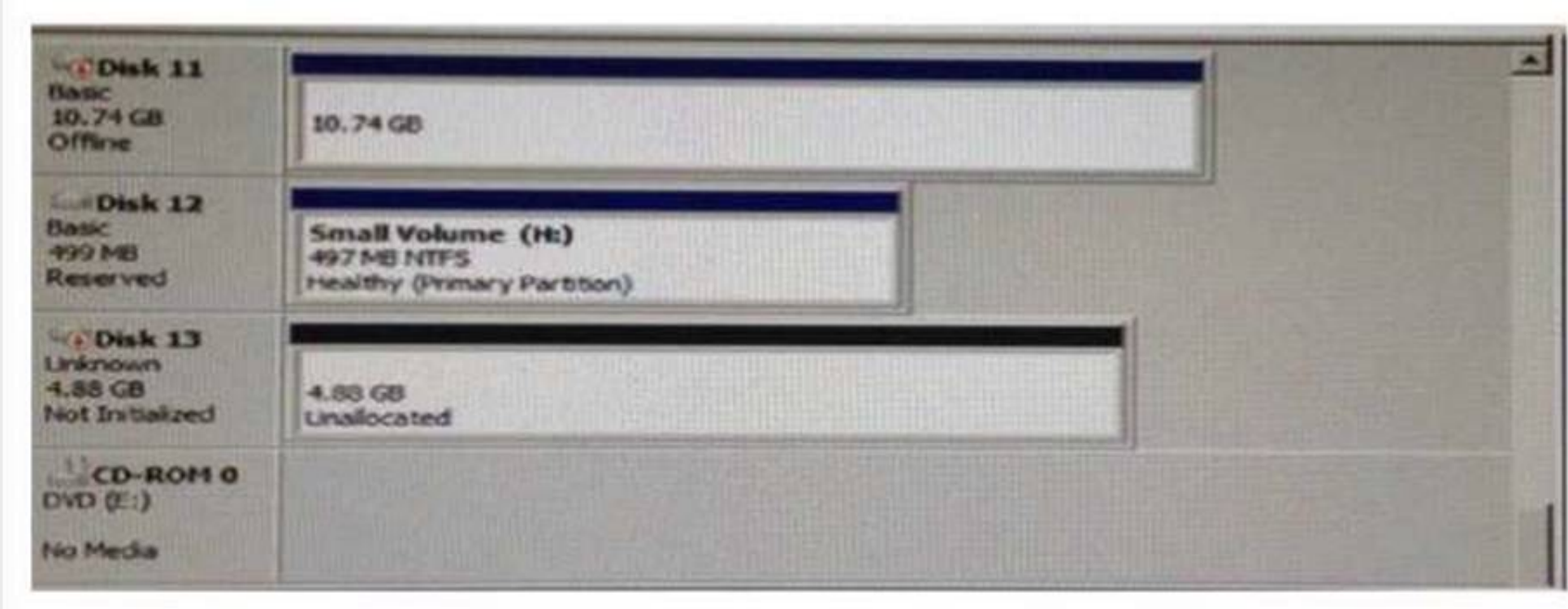
Inbound
Outbound

-Action Allow -LocalPort 3389 -Protocol TCP -Weight 10

NEW QUESTION 23

HOTSPOT

You have a server named Server1 that runs Windows Server 2016 and has the Hyper-V server role installed You open Disk Management on Server1 as shown in the following graphic



You plan to configure Disk13 as a pass-through disk for a generation 1 virtual machine
Use the drop-down menus to select the answer choice that completes each statement based on the information presented in the graphic

The status of Disk 13 must be set to [answer choice.]



If the virtual machine uses Disk 13 as the system partition, Disk 13 must be attached to [answer choice] in Hyper-V Manager.

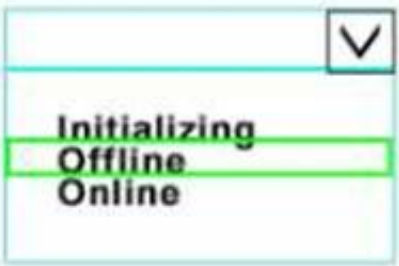


- A. Mastered
- B. Not Mastered

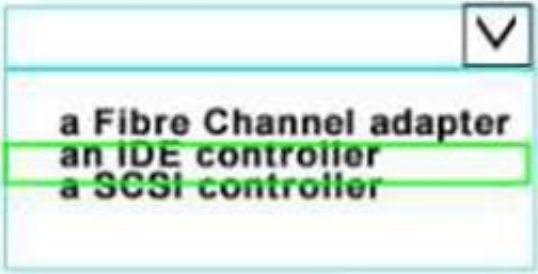
Answer: A

Explanation:

The status of Disk 13 must be set to [answer choice.]



If the virtual machine uses Disk 13 as the system partition, Disk 13 must be attached to [answer choice] in Hyper-V Manager.



NEW QUESTION 26

You need to modify the GPO prefix by IPAM. What should you do?

- A. Run theSet-IpamConfigurationcmdlet
- B. ClickProvision the IPAM serverin Server Manager.
- C. ClickConfigure server discoveryin Server Manage
- D. Run theInvoke-IpamGpoProvisioningcmdlet

Answer: A

NEW QUESTION 31

HOTSPOT

You have a Hyper-V host that runs Windows Server 2016 The Hyper-V host has a virtual machine named VM1

You have a VHD named VHD1 vhdx that has a generalized image of Windows Server 2016. You plan to create multiple virtual machines that will use the generalized image

You need to create differencing disks based on VHD1 vhdx

What command should you run? To answer, select the appropriate options in the answer area

▼

Add-VMHardDiskDrive
New-VHD
Set-VHD
Set-VMHardDiskDrive

-Path "C:\VHDs\VHD1Diff.VHDX"

▼

-ParentPath
-SourceDisk

"C:\VHDs\VHD1.VHDX" -Differencing

- A. Mastered
B. Not Mastered

Answer: A

Explanation:

▼

Add-VMHardDiskDrive
New-VHD
Set-VHD
Set-VMHardDiskDrive

-Path "C:\VHDs\VHD1Diff.VHDX"

▼

-ParentPath
-SourceDisk

"C:\VHDs\VHD1.VHDX" -Differencing

NEW QUESTION 35

HOTSPOT

Your network contains an Active Directory domain named contoso.com. The domain contains a member server named Server1 that runs Windows Server 2016. You install IP Address Management (IPAM) on Server1. You select the automatic provisioning method, and then you specify a prefix of IPAM1. You need to configure the environment for automatic IPAM provisioning. Which cmdlet should you run? To answer, select the appropriate options in the answer area.

▼

Add-IpamDiscoveryDomain
Enable-IpamCapability
Invoke-IpamGpoProvisioning
Set-IpamConfiguration

-Domain "Contoso.com"

▼

-AssetTag
-DisciverDns
-GpoPrefixName
-ProvisioningMethod

"IPAM1"

- A. Mastered
B. Not Mastered

Answer: A

Explanation:

▼

Add-IpamDiscoveryDomain
Enable-IpamCapability
Invoke-IpamGpoProvisioning
Set-IpamConfiguration

-Domain "Contoso.com"

▼

-AssetTag
-DisciverDns
-GpoPrefixName
-ProvisioningMethod

"IPAM1"

NEW QUESTION 36

DRAG DROP

Your network contains an Active Directory domain named contoso.com. The domain contains two servers named Server1 and Server2 that run Windows Server 2016.

Server1 has IP Address Management (IPAM) installed. Server2 has Microsoft System Center 2016 Virtual Machine Manager (VMM) installed.

You need to integrate IPAM and VMM.

Which types of objects should you create on each server? To answer, drag the appropriate object types to the correct servers. Each object type may be used once, more than once, or not at all. You may need to drag the split bar between panes or scroll to view content.

The screenshot shows a drag-and-drop interface. On the left, there are five object types in green boxes: Access policy, Network Service, Run As Account, Service Template, and User Role. On the right, there are two servers: Server1 and Server2. Server1 has one red box labeled 'Object'. Server2 has two red boxes, both labeled 'Object'.

- A. Mastered
- B. Not Mastered

Answer: A

Explanation:

Object Type	Server
Access policy	Server1
Run As Account	Server2
Network Service	Server2

NEW QUESTION 38

HOTSPOT

Your network contains an Active Directory domain named contoso.com. The domain contains four servers named Server1, Server2, Server3, and Server4 that run Windows Server 2016.

Server1 has IP Address Management (IPAM) installed. Server2, Server3, and Server4 have the DHCP Server role installed. IPAM manages Server2, Server3, and Server4.

A domain user named User1 is a member of the groups shown in the following table.

Server name	Group
Server1	IPAM Users
Server2	DHCP Administrators
Server3	DHCP Users
Server4	Users

Which actions can User1 perform? To answer, select the appropriate options in the answer area.

Actions	Yes	No
Use the DHCP console on Server1 to create a DHCP scope on Server2.	<input type="radio"/>	<input type="radio"/>
Use the DHCP console on Server1 to create a DHCP scope on Server3.	<input type="radio"/>	<input type="radio"/>
Use the IPAM node of Server Manager on Server1 to create a DHCP scope on Server4.	<input type="radio"/>	<input type="radio"/>

- A. Mastered
- B. Not Mastered

Answer: A

Explanation:

Actions	Yes	No
Use the DHCP console on Server1 to create a DHCP scope on Server2.	<input checked="" type="radio"/>	<input type="radio"/>
Use the DHCP console on Server1 to create a DHCP scope on Server3.	<input type="radio"/>	<input checked="" type="radio"/>
Use the IPAM node of Server Manager on Server1 to create a DHCP scope on Server4.	<input type="radio"/>	<input checked="" type="radio"/>

NEW QUESTION 39

Note: This question is part of a series of questions that use the same similar answer choices. An answer choice may be correct for more than one question in the series. Each question is independent of the other questions in this series. Information and details provided in a question apply only to that question.

You have three servers named Server1, Server2, and Server3 that run Windows Server 2016. Server1 and Server2 have the Hyper-V server role installed. Server3 has the iSCSI Target Server role service installed.

Server name	Components installed
Server1	Hyper-V server role
Server2	Hyper-V server role
Server3	iSCSI Target Server role service

You need to create a Hyper-V cluster Which tool should you use first?

- A. the clussvc.exe command
- B. the cluster.exe command
- C. the Computer Management console
- D. the configurehyperv.exe command
- E. the Disk Management console
- F. the Failover Cluster Manager console
- G. the Hyper-V Manager console
- H. the Server Manager Desktop app

Answer: H

NEW QUESTION 42

Note: This question is part of a series of questions that use the same similar answer choices An answer choice may be correct for more than one question in the series Each question is independent of the other questions in this series. Information and details provided in a question apply only to that question

You have a two-node Hyper-V cluster named Cluster1 at a primary location and a stand-alone Hyper- V host named Server1 at a secondary location

A virtual machine named VM1 runs on Cluster1 You configure a Hyper-V Replica of VM1 to Server1 You need to perform a Test Failover of VM1. Which tool should you use?

- A. the clussvc.exe command
- B. the cluster.exe command
- C. the Computer Management console
- D. the configurehyperv.exe command
- E. the Disk Management console
- F. the Failover Cluster Manager console
- G. the Hyper-V Manager console
- H. the Server Manager Desktop app

Answer: G

NEW QUESTION 44

Note: This question is part of a series of questions that use the same similar answer choices. An answer choice may be correct for more than one question in the series. Each question is independent of the other questions in this series. Information and details provided in a question apply only to that question.

You have a Hyper-V host named Server1 that runs Windows Server 2016. Server1 contains a virtual machine named VM1.

You need to ensure that you can use nested virtualization on VM1. What should you run on Server1?

- A. the Mount-VHD cmdlet
- B. the Diskpart command
- C. the Set-VHD cmdlet
- D. the Set-VM cmdlet
- E. the Set-VMHost cmdlet
- F. the Set-VMProcessor cmdlet
- G. the Install-WindowsFeature cmdlet
- H. the Optimize-VHD cmdlet

Answer: F

NEW QUESTION 46

Note: This question is part of a series of questions that use the same similar answer choices An answer choice may be correct for more than one question in the series Each question is independent of the other questions in this series. Information and details provided in a question apply only to that question

You have a Hyper-V host named Server1 that runs Windows Server 2016 Server1 has a dynamically expanding virtual hard disk (VHD) file that is 900 GB The VHD contains 400 GB of free space.

You need to reduce the amount of disk space used by the VHD. What should you run?

- A. the Mount-VHD cmdlet
- B. the Diskpart command
- C. the Set-VHD cmdlet
- D. the Set-VM cmdlet
- E. the Set-VMHost cmdlet
- F. the Set-VMProcessor cmdlet
- G. the Install-WindowsFeature cmdlet
- H. the Optimize-VHD cmdlet

Answer: H

NEW QUESTION 50

In this section, you'll see one or more sets of questions with the same scenario and problem Each question presents a unique solution to the problem, and you must determine whether the solution meets the stated goals Any of the solutions might solve the problem. It is also possible that none of the solutions solve the problem.
Once you answer a question in this section, you will NOT be able to return to it As a result. these questions will not appear in the review screen
Note This question is part of a series of questions that present the same scenario Each question in the series contains a unique solution Determine whether the solution meets the stated goals.
Your network contains an Active Directory forest named contoso.com. The forest contains a member server named Server1 that runs Windows Server 2016 All domain controllers run Windows Server 2012 R2
Contoso com has the following configuration

```
PS C:\> (Get-ADForest). ForestMode
Windows2008R2Forest

PS C:\> (Get-ADDomain). DomainMode
Windows2008R2Domain
PS C:\>
```

You plan to deploy an Active Directory Federation Services (AD FS) farm on Server1 and to configure device registration You need to configure Active Directory to support the planned deployment. Solution You raise the domain functional level to Windows Server 2012R2.
Does this meet the goal?

- A. Yes
- B. No

Answer: B

NEW QUESTION 51

In this section, you'll see one or more sets of questions with the same scenario and problem Each question presents a unique solution to the problem, and you must determine whether the solution meets the stated goals. Any of the solutions might solve the problem. It is also possible that none of the solutions solve the problem.
Once you answer a question in this section, you will NOT be able to return to it. As a result, these questions will not appear in the review screen
Note: This question is part of a series of questions that present the same scenario. Each question in the series contains a unique solution. Determine whether the solution meets the stated goals.
Your network contains an Active Directory domain named contoso.com. The domain contains a DNS server named Server1. All client computers run Windows 10. On Server1, you have the following zone configuration

ZoneName	ZoneType	IsAutoCreated	IsDsIntegrated	IsReverseLookupZone	IsSign
-----	-----	-----	-----	-----	-----
_msdcs.contoso.com	Primary	False	True	False	False
adatum.com	Forwarder	False	False	False	
contoso.com	Primary	False	True	False	False
fabrikam.com	Primary	False	False	False	True
TrustAnchors	Primary	False	True	False	False

You have the following subnets defined on Server1.

Name	IPv4Subnet	IPv6Subnet
----	-----	-----
Subnet1	{10.0.0.0/24}	
Subnet2	{10.0.1.0/24}	
Subnet3	{192.168.15.0/24}	
Subnet4	{172.16.1.0/24}	

You need to prevent Server1 from resolving queries from DNS clients located on Subnet4 Server1 must resolve queries from all other DNS clients
Solution From a Group Policy object (GPO) in the domain, you modify the Network List Manager Policies
Does this meet the goal?

- A. Yes
- B. No

Answer: B

NEW QUESTION 56

In this section, you'll see one or more sets of questions with the same scenario and problem Each question presents a unique solution to the problem, and you must determine whether the solution meets the stated goals Any of the solutions might solve the problem. It is also possible that none of the solutions solve the problem.
Once you answer a question in this section, you will NOT be able to return to it As a result. these questions will not appear in the review screen
Note This question is part of a series of questions that present the same scenario Each question in the series contains a unique solution Determine whether the solution meets the stated goals.
Your network contains an Active Directory forest named contoso.com. The forest contains a member server named Server1 that runs Windows Server 2016 All

domain controllers run Windows Server 2012 R2
Contoso.com has the following configuration

```
PS C:\> (Get-ADForest). ForestMode
Windows2008R2Forest

PS C:\> (Get-ADDomain). DomainMode
Windows2008R2Domain
PS C:\>
```

You plan to deploy an Active Directory Federation Services (AD FS) farm on Server1 and to configure device registration. You need to configure Active Directory to support the planned deployment. Solution: You raise the forest functional level to Windows Server 2012R2. Does this meet the goal?

- A. Yes
- B. No

Answer: A

NEW QUESTION 60

Note: This question is part of a series of questions that present the same scenario. Each question in the series contains a unique solution that might meet the stated goals. Some question sets might have more than one correct solution, while others might not have a correct solution.

After you answer a question in this section, you will NOT be able to return to it. As a result, these questions will not appear in the review screen.

You have two servers that run Windows Server 2016.

You plan to create a Network load Balancing (NLB) cluster that will contain both servers. You need to configure the network cards on the servers for the planned NLB configuration.

Solution: You configure the network cards to be on the same subnet and to have dynamic IP addresses. You configure the cluster to use multicast.

Does this meet the goal?

- A. Yes
- B. No

Answer: B

Explanation:

References:

<https://technet.microsoft.com/en-us/windows-server-docs/networking/technologies/network-load-balancing>

NEW QUESTION 64

Note: This question is part of a series of questions that present the same scenario. Each question in the series contains a unique solution that might meet the stated goals. Some question sets might have more than one correct solution, while others might not have a correct solution.

After you answer a question in this section, you will NOT be able to return to it. As a result, these questions will not appear in the review screen.

You have two servers that run Windows Server 2016.

You plan to create a Network Load Balancing (NLB) cluster that will contain both servers. You need to configure the network cards on the servers for the planned NLB configuration.

Solution: You configure the network cards to be on the same subnet and to have static IP addresses. You configure the cluster to use unicast.

Does this meet the goal?

- A. Yes
- B. No

Answer: A

Explanation:

References:

<https://technet.microsoft.com/en-us/windows-server-docs/networking/technologies/network-load-balancing>

NEW QUESTION 66

Note: This question is part of a series of questions that present the same scenario. Each question in the series contains a unique solution that might meet the stated goals. Some question sets might have more than one correct solution, while others might not have a correct solution.

Your network contains an Active Directory forest.

You install Windows Server 2016 on 10 virtual machines.

You need to deploy the Web Server (IIS) server role identically to the virtual machines.

Solution: You create a software installation package, and then you publish the package to the virtual machines by using a Group Policy object (GPO).

Does this meet the goal?

- A. Yes
- B. No

Answer: B

NEW QUESTION 68

Note: This question is part of a series of questions that present the same scenario. Each question in the series contains a unique solution that might meet the stated goals. Some question sets might have more than one correct solution, while others might not have a correct solution.

You have a server named Server1 that runs Windows Server 2016. Server1 hosts a line-of-business application named App1. App1 has a memory leak that occasionally causes the application to consume an excessive amount of memory.

You need to log an event in the Application event log whenever App1 consume more than 4 GB of memory.

Solution: You create a system configuration information data collector. Does this meet the goal?

- A. Yes
- B. No

Answer: B

NEW QUESTION 71

Note This question is part of a series of questions that use the same scenario. For your convenience, the scenario is repeated in each question. Each question presents a different goal and answer choices, but the text of the scenario is exactly the same in each question in this series.

Start of Repeated Scenario:

A company named Contoso, Ltd. has several servers that run Windows Server 2016. Contoso has a Hyper V environment that uses failover clustering and Windows Server Update Services (WSUS). The environment contains several Windows containers and several virtual machines.

The WSUS deployment contains one upstream server that is located on the company's perimeter network and several downstream servers located on the internal network. A firewall separates the upstream server from the downstream servers.

You plan to deploy a human resources application to a new server named HRServer5. HRServer5 contains a FAT32-formatted data volume.

The CIO of Contoso identifies the following requirements for the company's IT department:

- Deploy failover cluster to two new virtual machines.
- Store all application databases by using Encrypted File System (EFS).
- Ensure that each Windows container has a dedicated IP address assigned by a DHCP server
- Produce a report that lists the processor time used by all of the processes on a server named Server 1 for five hour.

Encrypt all communication between the internal network and the perimeter network, including all WSUS communications.

- Automatically load balance the virtual machines hosted in the Hyper-V cluster when processor utilization exceeds 70 percent.

End of Repeated Scenario.

What should you do to prepare the data volume on HRServer5 to store the databases required for the human resources application?

- A. Format the data volume by using ReFS.
- B. Enable Trusted Platform Module (TPM) on HRServer5.
- C. Format the data volume by using NTFS.
- D. Enable BitLocker Drive Encryption (BitLocker) on the data volume.

Answer: C

NEW QUESTION 76

You have a server named Server1 that runs Windows Server 2016.

The Windows Server 2016 installation media is mounted as drive D.

You copy the NanoServerImageGenerator folder from the D:\NanoServer folder to the C:\NanoServer folder.

You need to create a custom Nano Server image that includes the Hyper-V server role. The image will be used to deploy Nano Servers to physical servers.

Which two commands should you run? Each correct answer presents part of the solution.

- A. New-NanoServerImage –Edition Standard –DeploymentType Guest –MediaPath D:\ -TargetPath.\NanoServerImage\NanoServer.wim –Compute
- B. Install-PackageProvider NanoServerPackage
- C. Import-PackageProvider NanoServerPackage
- D. New-NanoServerImage –Edition Standard –DeploymentType Host –MediaPath D:\ -TargetPath.\NanoServerImage\NanoServer.wim–Compute
- E. Import-Module C:\NanoServer\NanoServerImageGenerator

Answer: DE

NEW QUESTION 80

You have a server named Server1 that runs Windows Server 2016. You need to install the DNS Server role on Server1. What should you run?

- A. the dns.exe command
- B. the optionalfeature.exe command
- C. the Install-Package cmdlet
- D. the Enable-WindowsOptionalFeature cmdlet

Answer: D

NEW QUESTION 81

You have a server named Server 1 that runs Windows Server 2016 and has the Hyper-V server role installed.

On Server1, you plan to create a virtual machine named VM1. You need to ensure that you can start VM1 from the network.

What are two possible ways to achieve the goal? Each correct answer presents a complete solution.

- A. Create a generation 2 virtual machine.
- B. Create a generation 1 virtual machine and run theEnable-NetAdapterPackageDirectcmdlet.
- C. Create a generation 1 virtual machine that has a legacy network adapter.
- D. Create a generation 1 virtual machine and configure a single root I/O virtualization (SRV-IO) interface for the network adapter.

Answer: AC

NEW QUESTION 84

You have a Hyper-V host named Server1 that runs Windows Server 2016. Server1 contains four virtual machines that are configured as shown in the following table.

Virtual machine name	Configuration
VM1	A shielded virtual machine that runs Windows Server 2012 R2
VM2	A shielded virtual machine that runs Windows Server 2016
VM3	A virtual machine that runs Windows Server 2012 R2 and has Secure Boot enabled
VM4	A virtual machine that runs Windows Server 2016 and has all of its drivers protected by using BitLocker Drive Encryption (BitLocker)

To which machine or machines can you connect by using Virtual Machine Connection from Hyper-V Manager?

- A. VM1, VM2, VM3 and VM4
- B. VM4 only
- C. VM1 and VM2 only
- D. VM3 and VM4 only
- E. VM2 only

Answer: D

NEW QUESTION 87

After you answer a question in this section, you will NOT be able to return to it. As a result, these questions will not appear in the review screen.

You have a server named Server1 that runs Windows Server 2016.

You plan to use Windows Server Backup to back up all of the data on Server1. You create a new volume on Server1.

You need to ensure that the new volume can be used as a backup target. The backup target must support incremental backups.

Solution: You mount the volume to C:\Backup, and you format the volume by using NTFS. Does this meet the goal?

- A. Yes
- B. No

Answer: A

NEW QUESTION 89

Your network contains an Active Directory domain. The domain contains a new file server named

Server1 that runs a Server Core installation of Windows Server 2016.

Server1 has an ReFS-formatted volume D: and NTFS-formatted volume E: The volumes do not contain any data.

You install the Data Deduplication role service on Server1.

You need to implement Data Deduplication for volumes on D: and E:.

Solution: From Windows PowerShell, you run Format-Volume E: -FileSystem ReFS and Enable- DeDupVolume -Volume D:,E:.

Does this meet the goal?

- A. Yes
- B. No

Answer: A

Explanation:

References: <https://docs.microsoft.com/en-us/windows-server/storage/data-deduplication/understand>

NEW QUESTION 94

DRAG DROP

You have a Hyper-V host named Server1 that runs Windows Server 2016. Server 1 hosts a virtual machine named VM1 that runs Windows Server 2016. Server1 has a USB 3.0 device attached to a PCI Express (PCIe) bus.

You need to provide VM1 with pass-through access to the USB 3.0 device.

Which three actions should you perform in sequence? To answer, move the appropriate actions from the list of actions to the answer area and arrange them in the correct order.

Actions

On Server1, run the **Dismount-VMHostAssignableDevice** cmdlet.

On Server1, run the **Add-VMAssignableDevice** cmdlet

On Server1, run the **Disable-PnPDevice** cmdlet

On VM1, run the **Enable-PnPDevice** cmdlet

On VM1, ran the **Mount-VMHostAssignable Device** cmdlet

Answer Area

1

2

3

- A. Mastered
B. Not Mastered

Answer: A

Explanation:

Actions

On Server1, run the **Dismount-VMHostAssignableDevice** cmdlet.

On Server1, run the **Add-VMAssignableDevice** cmdlet

Answer Area

1

On VM1, ran the **Mount-VMHostAssignable Device** cmdlet

2

On VM1, run the **Enable-PnPDevice** cmdlet

3

On Server1, run the **Disable-PnPDevice** cmdlet

NEW QUESTION 96

You have a Hyper-V host named Server1 that runs Windows Server 2016. Server1 hosts a virtual machine. You need to provide VM1 with direct access to a graphics processing unit (GPU) on Server1. What should you do first?

- A. On VM1, install the QUzility Windows Audio Video Experience (qWave) feature.
B. Dismount the display adapter on Server1.
C. In the settings of VM1, add a RemoteFX 3D Video Adapter.
D. Disable the display adapter device on Server1.

Answer: D

Explanation:

Before the physical device is allowed to be passed through to the VM, the device must be disabled on the host system. The physical device must be accessible/available exclusively to the VM only. References:

Introduction to Windows Server 2016 Hyper-V DiscreteDevice Assignment, page 5 <https://lenovopress.com/lp0088.pdf>

NEW QUESTION 101

DRAG DROP

You are preparing an image of Windows Server 2016.

The image is missing the driver foe a network adapter that is required in your environment. You need to ensure that the image contains the network adapter driver. Which three cmdlets should you use in sequence? To answer, move the appropriate cmdlets from the list of cmdlets to the answer area and arrange them m the

correct order.

Cmdlets

Mount-WindowsImage

Add-WindowsDriver

Get-WindowsImage

Save-WindowsImage

Add-WindowsFeature

Dismount-WindowsImage

Optimize-WindowsImage

Answer Area

1

2

3

- A. Mastered
- B. Not Mastered

Answer: A

Explanation:

Cmdlets

Mount-WindowsImage

Get-WindowsImage

Save-WindowsImage

Add-WindowsFeature

Answer Area

1

Add-WindowsDriver

2

Optimize-WindowsImage

3

Dismount-WindowsImage

NEW QUESTION 105

Your network contains an Active Directory domain named contoso.com. The domain contains two servers, Server1 and Server2 that run Windows Server 2016. Each server has an operating system disk and four data disks. All of the disks are locally attached SATA disks. Data disk1 is initialized as an MBR disk, and has a single NTFS volume.

You plan to implement Storage Spaces Direct by using the data disks on Server1 and Server2. You need to prepare the data disks for the Storage Spaces Direct implementation.

What should you do?

- A. Convert the data disks to dynamic disks.
- B. Format the volumes on the data disks as exFAT.
- C. Initialize the data disks as GPT disks and create an ReFS volume on each disk.
- D. Delete the volumes from the data disks.

Answer: D

NEW QUESTION 106

Your network contains an Active Directory domain. The domain contains two Hyper-V hosts. You plan to perform live migrations between the hosts. You need to ensure that the live migration traffic is authenticated by using Kerberos. What should you do first?

- A. From Server Manager, install the Host Guardian Service server role on a domain controller.
- B. From Active Directory Users and Computers, add the computer accounts for both servers to the Cryptographic Operators group.
- C. From Active Directory Users and Computers, modify the Delegation properties of the computer accounts for both servers.
- D. From Server Manager, install the Host Guardian Service server role on both servers.

Answer: C

Explanation:

If you have decided to use Kerberos to authenticate live migration traffic, configure constrained delegation before you proceed to the rest of the steps. To configure constrained delegation

NEW QUESTION 108

You have two Hyper-V hosts named Server1 and Server2 that run Windows Server 2016. Server1 and Server2 are connected to the same network. On Server1 and Server2, you create an external network switch named Switch1. You have the virtual machines shown in the following table.

Virtual machine name	IP address	Subnet mask	Hyper-V host
VM1	192.168.1.16	255.255.255.0	Server1
VM2	192.168.1.32	255.255.255.0	Server2
VM3	192.168.1.48	255.255.255.0	Server2

All three virtual machines are connected to Switch1.

You need to prevent applications in VM3 from being able to capture network traffic from VM1 or VM2. The solution must ensure that VM1 retains network connectivity.

What should you do?

- A. On Server2, configure the VLAN ID setting of Switch1.
- B. On Server2, create an external switch and connect VM3 to the switch.
- C. Modify the subnet mask of VM1 and VM2.
- D. Configure network virtualization for VM1 and VM2.

Answer: D

NEW QUESTION 111

Note: This question is part of a series of questions that use the same or similar answer choices. An answer choice may be correct for more than one question in the series. Each question is independent of the other questions in this series. Information and details provided in a question apply only to that question.

You have two servers named Server1 and Server2 that run Windows Server 2016. Server1 and Server2 have the Hyper-V server role installed and are nodes in a failover cluster.

On Server1, an administrator creates a virtual machine named VM1. You need to configure VM1 for high availability.

Which tool should you use?

- A. the clussvc.exe command
- B. the cluster.exe command
- C. the Computer Management snap-in
- D. the configurehyperv.exe command
- E. the Disk Management snap-in
- F. the Failover Cluster Manager snap-in
- G. the Hyper-V Manager snap-in
- H. the Server Manager app

Answer: F

Explanation:

References:

<http://windowsitpro.com/hyper-v/make-vm-highly-available-windows-server-2012>

NEW QUESTION 115

HOTSPOT

Your company has a main office and a branch office. The two offices connect to each other by using a WAN link.

Your network contains an Active Directory forest named contoso.com. The forest contains a domain controller named DC1. All of the domain controllers are located in the main office.

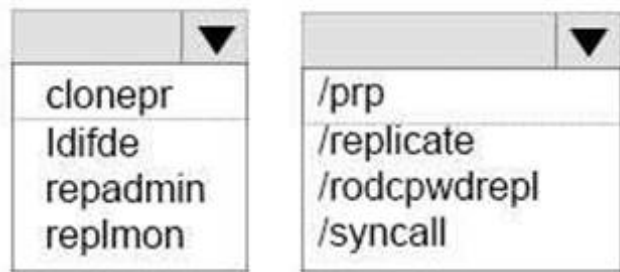
You install a read-only domain controller (RODC) named RODC1 in the branch office.

You create a user account for a new user named User1. You add User1 to the Allowed RODC Password Replication Group. User1 starts work on Monday.

You are notified that the WAN link will be down for maintenance on Monday. You need to ensure that User1 can log on in the branch office site on Monday.

Which command should you run? To answer, select the appropriate options in the answer area.

Answer Area



rodcl.fabrikam.com dcl.fabrikam.com "cn=user1,ou=users,dc=fabrikam,DC=com"

- A. Mastered
- B. Not Mastered

Answer: A

Explanation:

References:
[https://technet.microsoft.com/en-us/library/cc742095\(v=ws.11\).aspx](https://technet.microsoft.com/en-us/library/cc742095(v=ws.11).aspx)

NEW QUESTION 118

HOTSPOT

Your network contains an Active Directory forest. The forest contains one domain named contoso.com. The domain contains two domain controllers named DC1 and DC2. DC1 holds all of the operations master roles. During normal network operations, you run the following commands on DC2:

```
Move-ADDirectoryServerOperationMasterRole -Identity "DC2" - OperationMasterRole PDCEmulator
```

```
Move-ADDirectoryServerOperationMasterRole -Identity "DC2" - OperationMasterRole RIDMaster
```

DC1 fails.
You remove DC1 from the network, and then you run the following command:

```
Move-ADDirectoryServerOperationMasterRole -Identity "DC2" - OperationMasterRole SchemaMaster
```

For each of the following statements, select Yes if the statement if true. Otherwise, select No.

Answer Area

Statements	Yes	No
DC2 holds the schema master operations role.	<input type="radio"/>	<input type="radio"/>
DC2 holds the PDC emulator master operations role.	<input type="radio"/>	<input type="radio"/>
Currently, you can add additional domains to the forest.	<input type="radio"/>	<input type="radio"/>

- A. Mastered
- B. Not Mastered

Answer: A

Explanation:

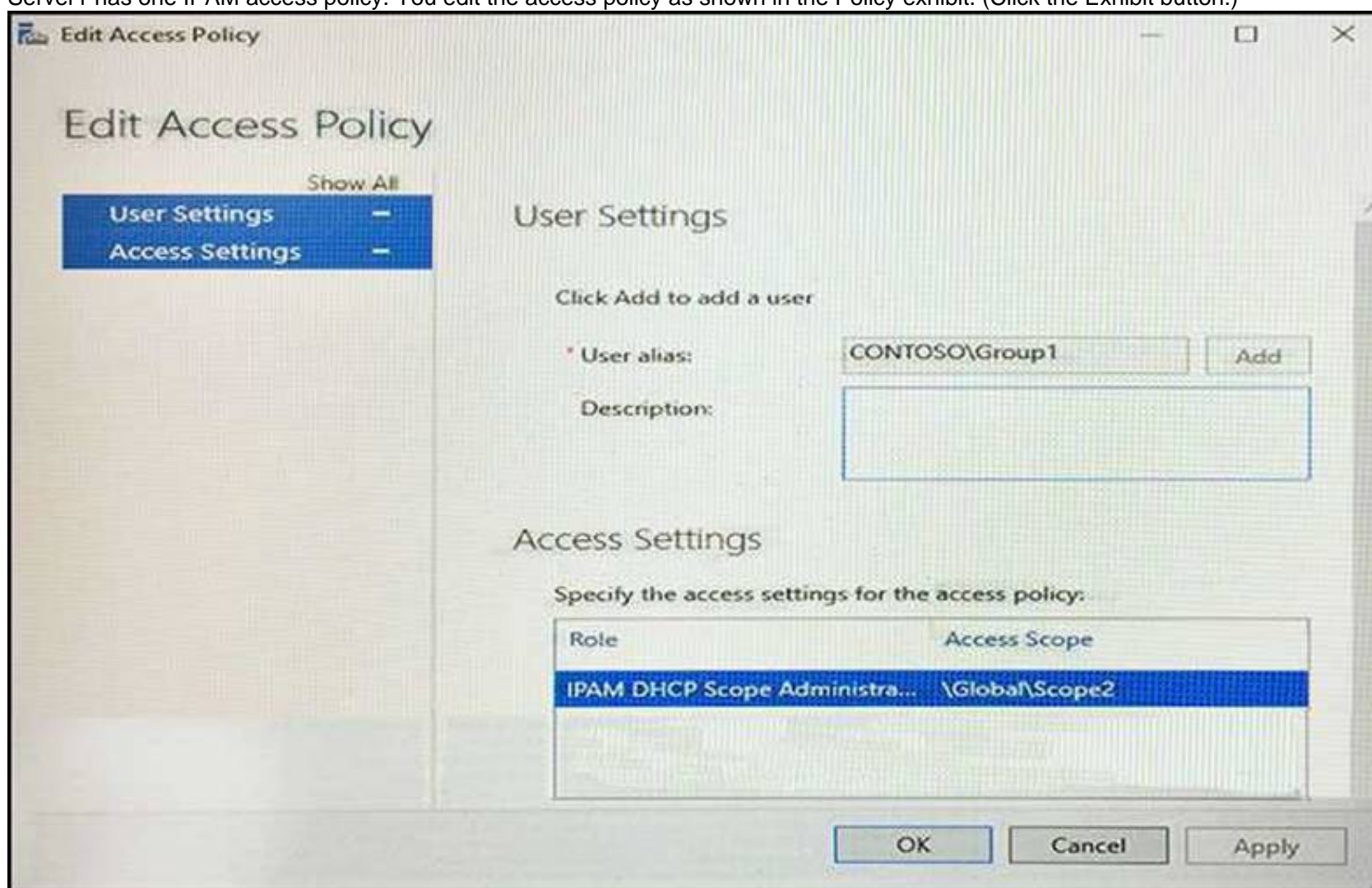
Answer Area

Statements	Yes	No
DC2 holds the schema master operations role.	<input type="radio"/>	<input checked="" type="radio"/>
DC2 holds the PDC emulator master operations role.	<input checked="" type="radio"/>	<input type="radio"/>
Currently, you can add additional domains to the forest.	<input type="radio"/>	<input checked="" type="radio"/>

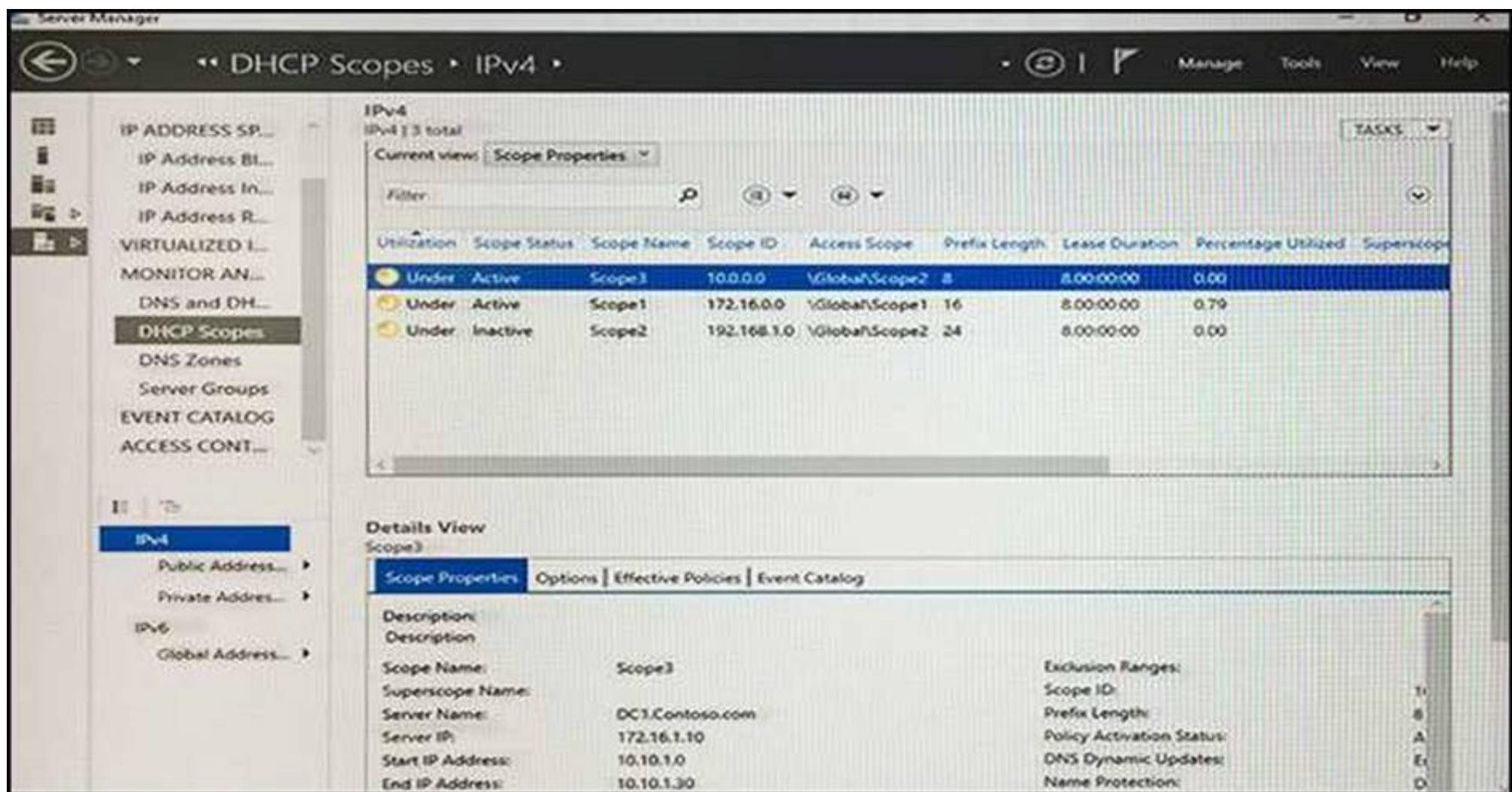
NEW QUESTION 120

HOTSPOT

You network contains an Active Directory named contoso.com. The domain contains two servers named Server1 and Server2 that run Windows Server 2016. Server1 has IP Address Management (IPAM) installed. Server2 has the DHCP Server role installed. The IPAM server retrieves data from Server2. The domain has two users named User1 and User2 and a group named Group1. User1 is the only member of Group1. Server1 has one IPAM access policy. You edit the access policy as shown in the Policy exhibit. (Click the Exhibit button.)



The DHCP scopes are configured as shown in the Scopes Exhibit. (Click the Exhibit button.)



For each of the following statements, select Yes if the statement is true. Otherwise, select No.

Answer Area

Statements

Yes

No

User1 can modify the description of Scope1.

☐☐

User2 can modify the description of Scope1.

☐☐

User1 can modify the description of Scope2.

☐☐

- A. Mastered
B. Not Mastered

Answer: A

Explanation:

[https://technet.microsoft.com/en-us/library/dn268500\(v=ws.11\).aspx](https://technet.microsoft.com/en-us/library/dn268500(v=ws.11).aspx)

NEW QUESTION 121

You have a server named Server1 that runs Windows Server 2016. Server1 is a Hyper-V host that hosts a virtual machine named VM1. Server1 has three network adapter cards that are connected to virtual switches named vSwitch1, vSwitch2 and vSwitch3. You configure NIC Teaming on VM1 as shown in the exhibit. (Click the Exhibit button.)

NIC Teaming

New team

Team name:

Member adapters:

In Team	Adapter	Speed	State	Reason
<input type="checkbox"/>	Ethernet	10 Gbps		
<input checked="" type="checkbox"/>	Ethernet 2	10 Gbps		
<input checked="" type="checkbox"/>	Ethernet 3	10 Gbps		

Additional properties

Teaming mode:

You need to ensure that VM1 will retain access to the network if a physical network adapter card fails on Server1. What should you do?

- A. From Windows PowerShell on VM1, run the Set-VmNetworkAdapterTeamMapping cmdlet.
- B. From Hyper-V Manager on Server1, modify the settings on VM1.
- C. From Windows PowerShell on Server1, run the Set-VmNetworkAdapterFailoverConfiguration cmdlet.
- D. From the properties of the NIC team on VM1, add the adapter named Ethernet to the NIC team.

Answer: D

Explanation:

<https://technet.microsoft.com/en-us/windows-server-docs/networking/technologies/nic-teaming/nic-teaming>

NEW QUESTION 123

Note: This question is part of a series of questions that use the same scenario. For your convenience, the scenario is repeated in each question. Each question presents a different goal and answer choices, but the text of the scenario is exactly the same in each question in this series.

Start of repeated scenario

Your network contains an Active Directory domain named contoso.com. The functional level of the forest and the domain is Windows Server 2008 R2. All servers in the domain run Windows Server 2016 Standard. The domain contains 300 client computers that run either Windows 8.1 or Windows 10.

The domain contains nine servers that are configured as shown in the following table.

Server name	Configuration	Planned changes
Server1	Domain controller	None
Server2	File server	Run Failover Clustering and Storage Spaces Direct
Server3	File server	Run Failover Clustering and Storage Spaces Direct
Server4	Hyper-V host	Run shielded virtual machines
Server5	Hyper-V host	None
Server6	Member server	Run Active Directory Federation Services (AD FS)
VM1	Virtual machine hosted on Server 5	None
VM2	Virtual machine hosted on Server 5	None
VM3	Virtual machine hosted on Server 5	None

The virtual machines are configured as follows:

- Each virtual machine has one virtual network adapter.
- VM1 and VM2 are part of a Network Load Balancing (NLB) cluster.

- All of the servers on the network can communicate with all of the virtual machines. End of repeated scenario. You create a new NLB cluster that contains VM3. You need to ensure that VM2 can remain in the original cluster and be added to the new cluster. What should you do first?
- A. Add a new virtual network adapter to VM2.
B. Install the Web Application Proxy server role on VM2 and VM3.
C. Modify the default port rule.
D. Change the cluster operation mode.

Answer: A

NEW QUESTION 128

HOTSPOT

You have a Windows Server 2016 failover cluster that contains two servers named Server1 and Server2. You need to apply patches to Server1. Which two commands should you run before you apply the patches? To answer, select the appropriate options in the answer area.

Answer Area

First command:

Invoke-Command Server2 { Start-ClusterGroup }
Invoke-Command Server2 { Start-ClusterResource }
Move-ClusterGroup -Node Server2
Set-ClusterOwnerNode -Owner Server2
Set-ClusterParameter -Name Owner -Value Server2

Second command:

Stop-ClusterGroup
Stop-ClusterResource
Suspend-ClusterNode
Suspend-ClusterResource

- A. Mastered
B. Not Mastered

Answer: A

Explanation:

Answer Area

First command:

Invoke-Command Server2 { Start-ClusterGroup }
Invoke-Command Server2 { Start-ClusterResource }
Move-ClusterGroup -Node Server2
Set-ClusterOwnerNode -Owner Server2
Set-ClusterParameter -Name Owner -Value Server2

Second command:

Stop-ClusterGroup
Stop-ClusterResource
Suspend-ClusterNode
Suspend-ClusterResource

NEW QUESTION 131

HOTSPOT

You have four Hyper-V hosts named Server1, Server2, Server3 and Server4 that run Windows Server 2016. The hosts are nodes in a failover cluster. A virtual machine named VM1 is running in the failover cluster. The role for VM1 is configured as shown in the following exhibit.

```

Administrator: Windows PowerShell
PS C:\> Get-ClusterGroup vm1 | fl

AntiAffinityClassNames : {}
AutoFailbackType       : 1
ColdStartSetting       : 0
Cluster                : Cluster1
DefaultOwner           : 1
Description             :
GroupType              : VirtualMachine
FailoverPeriod         : 1
FailoverThreshold      : 2
FailbackWindowEnd      : 6
FailbackWindowStart    : 20
IsCoreGroup            : False
Name                   : vm1
OwnerNode              : Server1
PersistentState        : 1
PreferredSite          : {}
Priority                : 2000
ResiliencyPeriod       : 4294967295
State                  : Online
StatusInformation      : 0
Id                     : 5304f522-4fbf-4d06-8fb6-c6b0e2c289e7

PS C:\>
  
```

Use the drop-down menus to select the answer choice that completes each statement based on the information presented in the graphic.

Answer Area

If VM1 fails three time in one hour, VM1 will [answer choice].

	▼
fail over to a different node	
remain in a failed state	
restart on the same node	

If VM1 fails over to a different node at 14:00, VM1 will fail back to the preferred node [answer choice].

	▼
as soon as possible	
automatically at 20:00	
if the current node is highly loaded	
only when triggered manually	

- A. Mastered
- B. Not Mastered

Answer: A

Explanation:

References:
[https://msdn.microsoft.com/en-us/library/aa369665\(v=vs.85\).aspx](https://msdn.microsoft.com/en-us/library/aa369665(v=vs.85).aspx)

NEW QUESTION 132

Which container type is described below:
Provides application isolation through process and namespace isolation technology.
This container shares a kernel with the container host and all containers running on the host.

- A. Hyper-V Container
- B. Windows Server Container

Answer: B

NEW QUESTION 134

With Nano Server some packages are installed directly with their own Windows PowerShell switches (such as -Compute); others you install by passing package names to the -Packages parameter, which you can combine in a comma-separated list.
You want to add IIS to your Nano Server, which command should you use?

- A. -Compute
- B. -Packages
- C. -Containers
- D. -Storage

Answer: B

Explanation:

IIS is added by using -Packages Microsoft-NanoServer-IIS-Package.

NEW QUESTION 137

The Host Guardian Service supports two different deployments of a Guarded fabric (attestation modes). The statement below describes which mode?

Guarded hosts that can run Shielded VMs are approved based on their identity, measured boot sequence and code integrity policies so that you can ensure that these hosts are only running approved code.

- A. Admin-trusted attestation
- B. TPM-trusted attestation

Answer: B

Explanation:

TPM-trusted attestation offers the strongest possible protections but also requires more configuration steps. Host hardware and firmware must include TPM 2.0 and UEFI 2.3.1 with secure boot enabled.

TPM trusted attestation is the mode Microsoft recommend that you use because it offers stronger assurances but it requires that your Hyper-V hosts have TPM 2.0.

NEW QUESTION 139

Which terminology is being described below?

Time synchronization is critical for the proper operation of many Windows services and line- ofbusiness applications. The uses the Network Time Protocol (NTP) to synchronize computer clocks on the network so that an accurate clock value, or time stamp, can be assigned to network validation requests and resource access requests.

- A. Network Services Shell (Netsh)
- B. Listsvc
- C. Fixmbr
- D. Windows Time service (W32time)

Answer: D

Explanation:

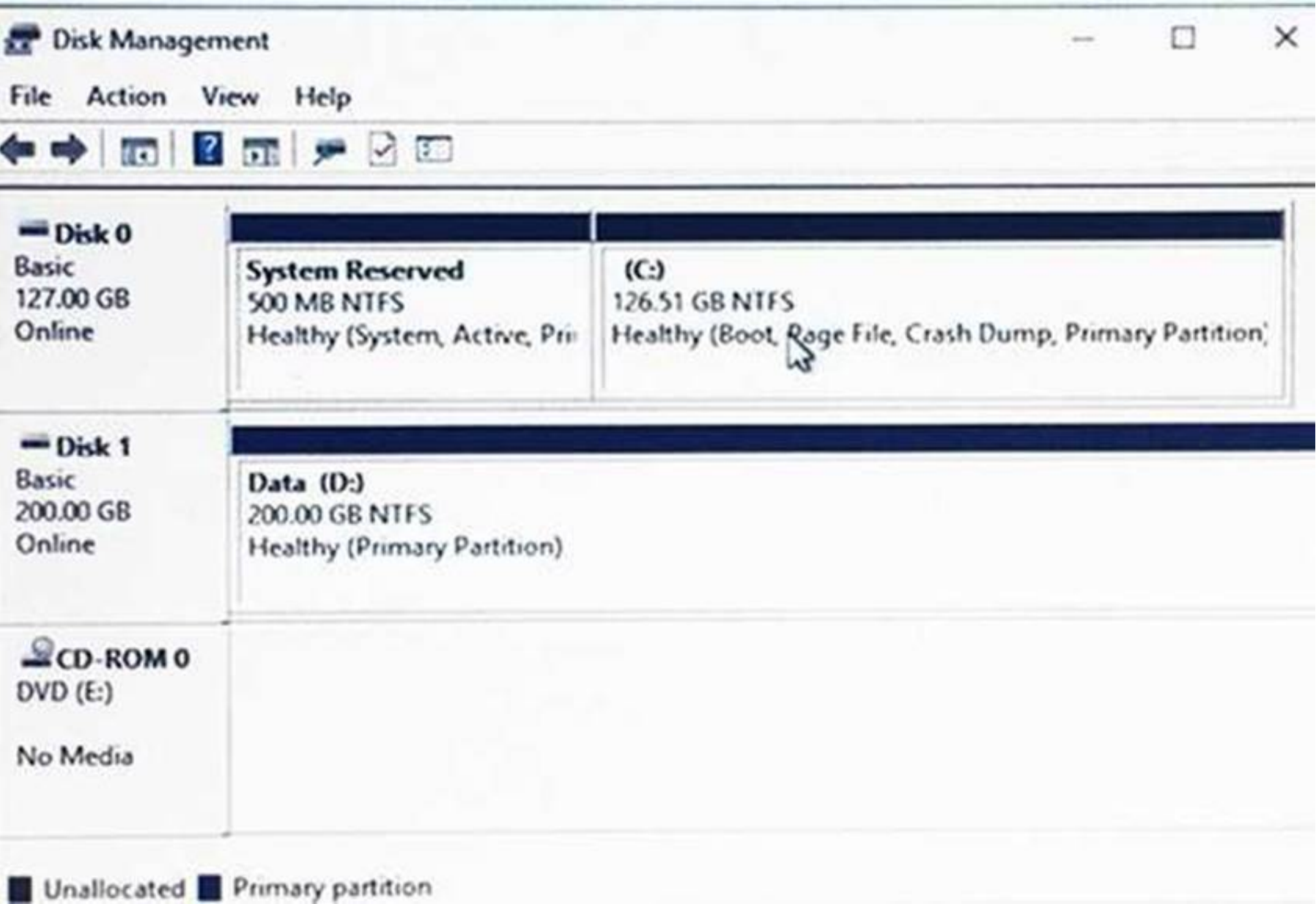
The correct answer is Windows Time service (W32time)

NEW QUESTION 144

DRAG DROP

You have a Hyper-V host named Server1 that runs Windows Server 2016. Server1 hosts a virtual machine named VM1. VM1 runs Windows Server 2016. VM1 uses a VHD for storage.

The disk configuration of VM1 is shown in the exhibit. (Click the Exhibit button.)



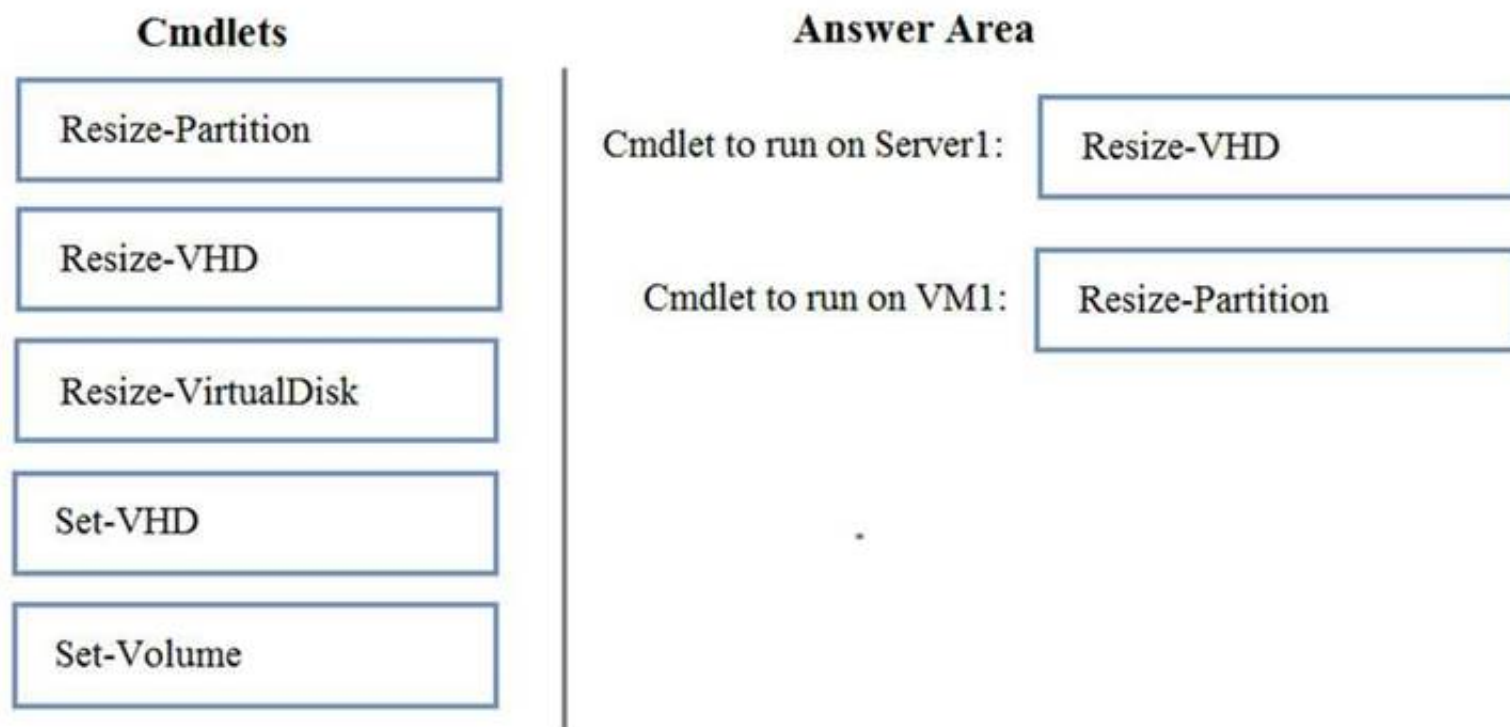
You need to increase the size of volume D to 400 GB.
Which cmdlets should you run on Server1 and VM1? To answer, drag the appropriate cmdlets to the correct servers. Each cmdlet may be used once, more than once, or not at all. You may need to drag the split bar between panes or scroll to view content.
NOTE: Each correct selection is worth one point.

Cmdlets	Answer Area
Resize-Partition	Cmdlet to run on Server1: <div>Cmdlet</div>
Resize-VHD	Cmdlet to run on VM1: <div>Cmdlet</div>
Resize-VirtualDisk	
Set-VHD	
Set-Volume	

- A. Mastered
- B. Not Mastered

Answer: A

Explanation:

**NEW QUESTION 148**

You have a server named Server1 that runs Windows Server 2016. Server1 has the Containers feature installed. You create a text file that contains the commands that will be used to automate the creation of new containers. You need to ensure that the commands in the text file are used when you create new containers. What should you name the file?

- A. Bootstrap.ini
- B. Config.ini
- C. Dockerfile
- D. Unattend.txt

Answer: C

NEW QUESTION 150

You have a server named Server1 that runs Windows Server 2016. On Server1, you use the Basic template to create a new Data Collector Set named CollectorSet1. You need to configure CollectorSet1 to generate performance alerts. What should you do before you start CollectorSet1?

- A. Modify the performance counter data collector of CollectorSet1.
- B. Add a new data collector to CollectorSet1.
- C. Modify the configuration data collector of CollectorSet1.
- D. Add a new task to CollectorSet1.

Answer: A

Explanation:

[https://technet.microsoft.com/en-us/library/cc722414\(v=ws.11\).aspx](https://technet.microsoft.com/en-us/library/cc722414(v=ws.11).aspx)

NEW QUESTION 155

You have a server named Server1 that runs Windows Server 2016. Server1 is a member of contoso.com. Server1 has the Hyper-V role installed. Virtual machines on Server1 are connected to an external switch named Switch1. You create a virtual machine named VM1 on Server1 by running the following cmdlets.

```
Add-VM VM1
Add-VMHardDiskDrive -VMName VM1 -ControllerType IDE -Path c:\VMs\Disk1.vhd
Add-VMNetworkAdapter -VMName VM1
```

You need to ensure that you can install the operating system on VM1 by using Windows Deployment Services. What should you do?

- A. Modify the SwitchType parameter of Switch1.
- B. Modify the DefaultFlowMinimumBandwidthWeight parameter of Switch1.
- C. Add a SCSI controller to VM1.
- D. Add a legacy network adapter to VM1.

Answer: D

NEW QUESTION 158

You have two Hyper-V hosts named Server1 and Server2 that run Windows Server 2016. Server1 hosts a virtual machine named VM1 that is in a Running state. On Server1, you export VM1 and then you import VM1 on Server2. What is the current state of VM1 on Server2?

- A. Off

- B. Running
- C. Paused
- D. Saved

Answer: B

NEW QUESTION 161

HOTSPOT

You plan to deploy three servers named Server1, Server2, and Server3 that will run Windows Server 2016. The servers will have the following disk configurations:

Server1 will have a C: drive of 2 TB.

Server2 will have two disks. The C: drive will be 2 TB. The D: drive will be 1TB. D: must support file system-based compression.

Server3 will have two disks. The C: drive will be 2 TB. The D: drive will be 1TB and must support file- system based quotas.

Which file system can you use for each drive? To answer, select the appropriate options in the answer area.

Answer Area

C: on all servers:

	▼
NTFS only	
ReFS only	
Either NTFS or ReFS	

D: on Server2:

	▼
NTFS only	
ReFS only	
Either NTFS or ReFS	

D: on Server3:

	▼
NTFS only	
ReFS only	
Either NTFS or ReFS	

- A. Mastered
- B. Not Mastered

Answer: A

Explanation:

Answer Area

C: on all servers:

	▼
NTFS only	
ReFS only	
Either NTFS or ReFS	

D: on Server2:

	▼
NTFS only	
ReFS only	
Either NTFS or ReFS	

D: on Server3:

	▼
NTFS only	
ReFS only	
Either NTFS or ReFS	

NEW QUESTION 163

You have two servers named Server1 and Server2 that run Windows Server 2016. Server1 contains a volume named Volume1. You implement a Storage Replica that replicates the contents of Volume1 from Server1 to Server2. Server1 fails. From Server2, you need to ensure that you can access the contents of Volume1. What should you run?

- A. Update-StoragePool
- B. Set-SRPartnership
- C. vssadmin revert shadow
- D. Clear-FileStorageTier

Answer: B

Explanation:

References:

<https://docs.microsoft.com/en-us/windows-server/storage/storage-replica/server-to-server-storage-replication>

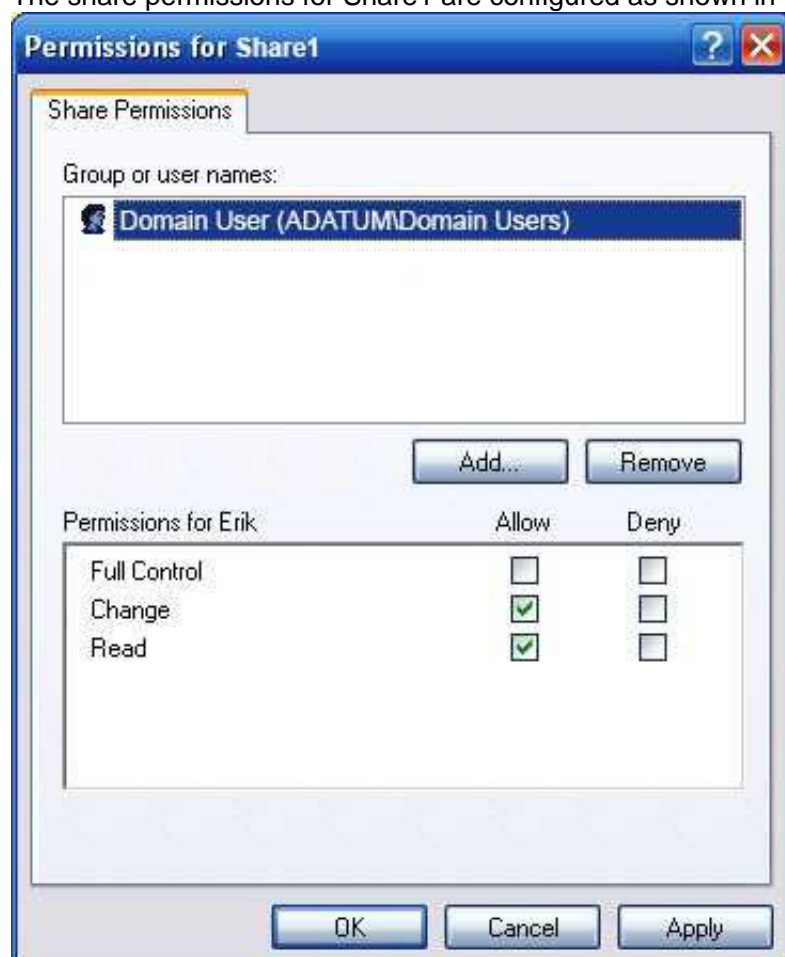
NEW QUESTION 167

HOTSPOT

Your network contains an Active Directory domain named Adatum.com. The domain contains two servers named Server1 and Server2 that run Windows Server 2016. The domain contains three users named User1, User2, and User3. Server1 has a share named Share1 that has the following configurations.

```
PresetPathAcl          : System.Security.AccessControl.DirectorySecurity
ShareState              : Online
AvailabilityType        : NonClustered
ShareType               : FileSystemDirectory
FolderEnumerationMode   : AccessBased
CachingMode             : Manual
SmbInstance             : Default
CATimeout              : 0
ConcurrentUserLimit     : 0
ContinuouslyAvailable   : False
CurrentUsers            : 0
Description             :
EncryptData             : False
Name                   : Share1
Path                   : C:\Shares\Share1
Scoped                  : False
ScopeName               : *
SecurityDescriptor      : O:BAG:DUD:(A;OICI;FA;;;WD)
ShadowCopy              : False
Special                 : False
Temporary              : False
Volume                 : \\?\Volume{d80578cf-0000-0000-0000-501f00000000}\
PSComputerName          :
CimClass                : ROOT\Microsoft\Windows\SMB:MSFT_SmsShare
CimInstanceProperties   : {AvailabilityType, CachingMode, CATimeout, ConcurrentUserLimit...}
CimSystemProperties     : Microsoft.Management.Infrastructure.CimSystemProperties
```

The share permissions for Share1 are configured as shown in the Share1 exhibit. (Click the Exhibit button.)



Share1 contains a file named File1.txt. The Advanced Security Settings for File1.txt are configured as shown in the File1.txt exhibit. (Click the Exhibit button.)

Advanced Security Settings for File1.txt

Name: C:\Shares\Share1\File1.txt

Owner: Administrators (SERVER1\Administrators)

Permissions

Share

Auditing

Effective Access

For additional information, double-click a permission entry. To modify a permission entry, select the entry and click Edit (if available).

Permission entries:

	Type	Principal	Access	Inherited from
	Allow	Domain Admins (ADATUM\Domain Admins)	Full control	None
	Allow	User1 (User1@Adatum.com)	Full control	None
	Allow	User2 (User2@Adatum.com)	Read	None
	Allow	User3 (User3@Adatum.com)	Write	None

Add

Remove

View

Disable inheritance

OK

Cancel

Apply

For each of the following statement, select Yes if the statement is true. Otherwise, select No.

Answer Area

Statement	Yes	No
When User1 navigates to \\Server1\Share1\, the user can take ownership of File1.txt.	<input type="radio"/>	<input type="radio"/>
When User2 navigates to \\Server1\Share1\, the user will see File1.txt	<input type="radio"/>	<input type="radio"/>
When User3 navigates to \\Server1\Share1\, the user will see File1.txt	<input type="radio"/>	<input type="radio"/>

- A. Mastered
- B. Not Mastered

Answer: A

Explanation:

Answer Area

Statement	Yes	No
When User1 navigates to \\Server1\Share1\, the user can take ownership of File1.txt.	<input type="radio"/>	<input checked="" type="radio"/>
When User2 navigates to \\Server1\Share1\, the user will see File1.txt	<input checked="" type="radio"/>	<input type="radio"/>
When User3 navigates to \\Server1\Share1\, the user will see File1.txt	<input checked="" type="radio"/>	<input type="radio"/>

NEW QUESTION 172

You have a server named Server1 that runs Windows Server 2016. The Docker daemon runs on Server1. You need to ensure that members of a security group named Docker Administrators can administer Docker. What should you do?

- A. Run the sc privsc ommand.
- B. Edit the Daemon.json file.
- C. Add Docker Administrators to the local Administrators group.
- D. Edit the Configuration.json file.

Answer: C

NEW QUESTION 176

HOTSPOT

Note: This question is part of a series of questions that use the same scenario. For your convenience, the scenario is repeated in each question. Each question presents a different goal and answer choices, but the text of the scenario is exactly the same in each question in this series.

Your network contains an Active Directory domain named contoso.com. The functional level of the forest and the domain is Windows Server 2008 R2. All servers in the domain run Windows Server 2016 Standard. The domain contains 300 client computers that run either Windows 8.1 or Windows 10.

The domain contains nine servers that are configured as shown in the following table.

Name	Configuration	Planned changes
Server1	Domain controller	None
Server2	File server	Run Failover Clustering and Storage Spaces Direct
Server3	File server	Run Failover Clustering and Storage Spaces Direct
Server4	Hyper-V host	Run shielded virtual machines
Server5	Hyper-V host	None
Server6	Member server	Run Active Directory Federation Services (AD FS)
VM1	Virtual machine hosted on Server5	None
VM2	Virtual machine hosted on Server5	None
VM3	Virtual machine hosted on Server5	None

The virtual machines are configured as follows:

Each virtual machine has one virtual network adapter.

VM1 and VM2 are part of a Network Load Balancing (NLB) cluster.

All of the servers on the network can communicate with all of the virtual machines. For VM1 and VM2, you plan to use live migration between Server4 and Server5. You need to ensure that when the virtual machines migrate, they maintain connectivity to the network.

Which virtual switch names and connection types should you use on each server? To answer, select the appropriate options in the answer area.

Answer Area

Virtual switch connection type on Server4:

▼
External network
Internal network
Private network

Virtual switch connection type on Server5:

▼
External network
Internal network
Private network

Virtual switch name on Server4:

▼
External on Server4
Network switch
Server4

Virtual switch name on Server5:

▼
External on Server5
Network switch
Server5

- A. Mastered
- B. Not Mastered

Answer: A

Explanation:

Answer Area

Virtual switch connection type on Server4:

▼
External network
Internal network
Private network

Virtual switch connection type on Server5:

▼
External network
Internal network
Private network

Virtual switch name on Server4:

▼
External on Server4
Network switch
Server4

Virtual switch name on Server5:

▼
External on Server5
Network switch
Server5

Note: This question is part of a series of questions that present the same scenario. Each question in the series contains a unique solution that might meet the stated goals. Some question sets might have more than one correct solution, while others might not have a correct solution.
After you answer a question in this section, you will NOT be able to return to it. As a result, these questions will not appear in the review screen.
You network contains an Active Directory domain named contoso.com.
You need to create a Nano Server image named Nano1 that will be used as a virtualization host. The Windows Server 2016 source files are located in drive D.
Solution: You run the following cmdlet.

```
New-NanoServerImage -Edition Datacenter -DeploymentType Host -Compute
-MediaPath 'D:\' -TargetPath C:\Nano1\Nano1.wim -ComputerName Nano1
-DomainName Contoso.com
```

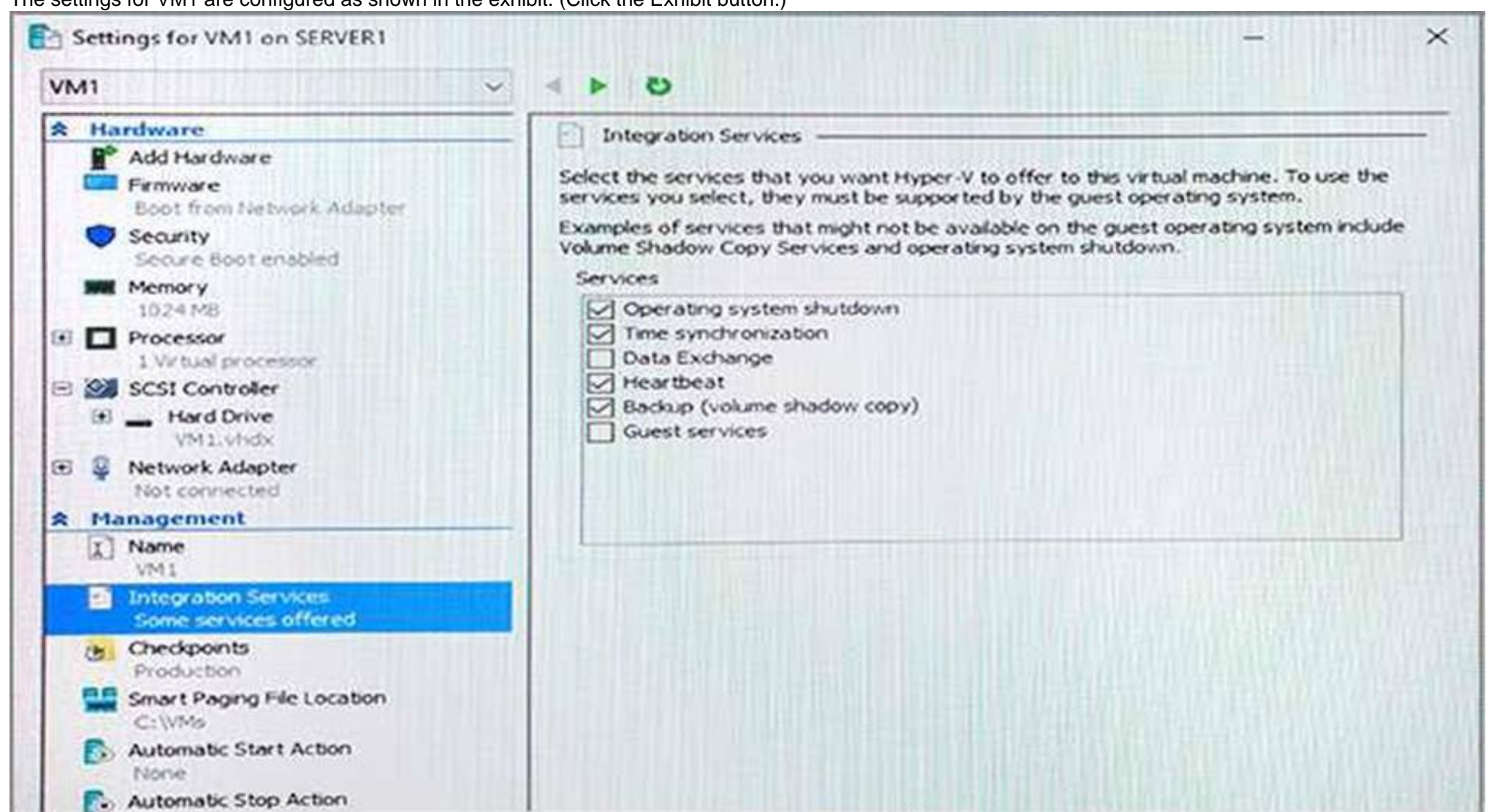
Does this meet the goal?

- A. Yes
- B. No

Answer: A

NEW QUESTION 183

Note: This question is part of a series of questions that present the same scenario. Each question in the series contains a unique solution that might meet the stated goals. Some question sets might have more than one correct solution, while others might not have a correct solution.
After you answer a question in this section, you will NOT be able to return to it. As a result, these questions will not appear in the review screen.
You have a Hyper-V host named Server1 that hosts a virtual machine named VM1. Server1 and VM1 run Windows Server 2016.
The settings for VM1 are configured as shown in the exhibit. (Click the Exhibit button.)



You need to ensure that you can use the Copy-VMFile cmdlet on Server1 to copy files from VM1. Solution: You enable the Data Exchange integration service for VM1.

Does this meet the goal?

- A. Yes
- B. No

Answer: B

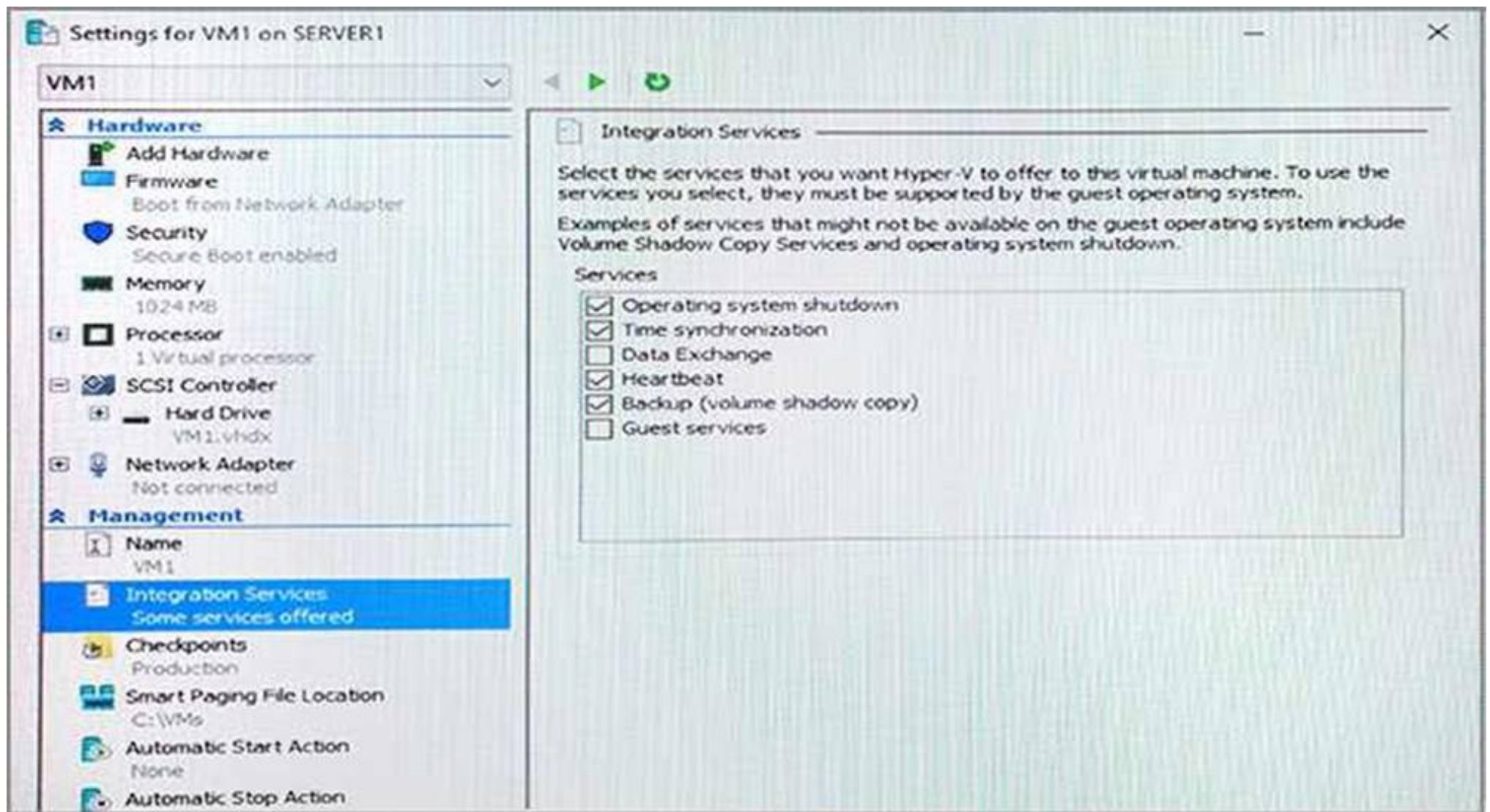
Explanation:

References:

[https://technet.microsoft.com/en-us/library/dn798297\(v=ws.11\).aspx](https://technet.microsoft.com/en-us/library/dn798297(v=ws.11).aspx)

NEW QUESTION 184

Note: This question is part of a series of questions that present the same scenario. Each question in the series contains a unique solution that might meet the stated goals. Some question sets might have more than one correct solution, while others might not have a correct solution.
After you answer a question in this section, you will NOT be able to return to it. As a result, these questions will not appear in the review screen.
You have a Hyper-V host named Server1 that hosts a virtual machine named VM1. Server1 and VM1 run Windows Server 2016.
The settings for VM1 are configured as shown in the exhibit. (Click the Exhibit button.)



You need to ensure that you can use the Copy-VMFile cmdlet on Server1 to copy files from VM1. Solution: You connect VM1 to an internal virtual switch. Does this meet the goal?

- A. Yes
- B. No

Answer: B

NEW QUESTION 188

Note: This question is part of a series of questions that present the same scenario. Each question in the series contains a unique solution that might meet the stated goals. Some question sets might have more than one correct solution, while others might not have a correct solution.

After you answer a question in this section, you will NOT be able to return to it. As a result, these questions will not appear in the review screen.

You have a server named Server1 that runs Windows Server 2016.

You plan to use Windows Server Backup to back up all of the data on Server1. You create a new volume on Server1.

You need to ensure that the new volume can be used as a backup target. The backup target must support incremental backups.

Solution: You mount the volume to C:\backup. and you format the volume by using FAT32. Does this meet the goal?

- A. Yes
- B. No

Answer: B

NEW QUESTION 189

DRAG DROP

Note: This question is part of a series of questions that use the same scenario. For your convenience, the scenario is repeated in each question. Each question presents a different goal and answer choices, but the text of the scenario is exactly the same in each question in this series.

A company named Contoso, Ltd. has several servers that run Windows Server 2016. Contoso has a Hyper-V environment that uses failover clustering and Windows Server Update Services (WSUS). The environment contains several Windows containers and several virtual machines.

The WSUS deployment contains one upstream server that is located on the company's perimeter network and several downstream servers located on the internal network. A firewall separates the upstream server from the downstream servers.

You plan to deploy a human resources application to a new server named HRServer5. HRServer5 contains a FAT32-formatted data volume.

The CIO of Contoso identifies the following requirements for the company's IT department: Deploy a failover cluster to two new virtual machines.

Store all application databases by using Encrypted File System (EFS).

Ensure that each Windows container has a dedicated IP address assigned by a DHCP server.

Produce a report that lists the processor time used by all of the processes on a server named Server1 for five hours.

Encrypt all communication between the internal network and the perimeter network, including all WSUS communications.

Automatically load balance the virtual machines hosted in the Hyper-V cluster when processor utilization exceeds 70 percent.

You need to configure the storage solution for the planned failover cluster.

You create two new generations 2 virtual machines on two separate Hyper-V hosts named VM11 and VM12.

Which three actions should you perform in sequence next? To answer, move the appropriate actions from the list of actions to the answer area and arrange them in the correct order.

Actions	Answer Area
For each virtual machine, create a new system disk that uses the VNDX format and store the disks in Share1.	
Create a VHDX file and store the file in the Clustered Shared Volume (CSV).	1 <input type="text"/>
For each virtual machine, create a new system disk that uses the VHDX format and store the virtual machines on the Cluster Shared Volume (CSV).	2 <input type="text"/>
Create a network share named Share1.	3 <input type="text"/>
Create a Clustered Shared Volume (CSV).	
To each virtual machine, add the VHDX file as a shared drive.	

- A. Mastered
- B. Not Mastered

Answer: A

Explanation:

Actions	Answer Area
For each virtual machine, create a new system disk that uses the VNDX format and store the disks in Share1.	
	1 Create a Clustered Shared Volume (CSV).
	2 For each virtual machine, create a new system disk that uses the VHDX format and store the virtual machines on the Cluster Shared Volume (CSV).
Create a network share named Share1.	3 Create a VHDX file and store the file in the Clustered Shared Volume (CSV).
To each virtual machine, add the VHDX file as a shared drive.	

NEW QUESTION 190

Note This question is part of a series of questions that use the same scenario. For your convenience, the scenario is repeated in each question. Each question

presents a different goal and answer choices, but the text of the scenario is exactly the same in each question in this series.

Start of Repeated Scenario:

A company named Contoso, Ltd. has several servers that run Windows Server 2016. Contoso has a Hyper-V environment that uses failover clustering and Windows Server Update Services (WSUS). The environment contains several Windows containers and several virtual machines.

The WSUS deployment contains one upstream server that is located on the company's perimeter network and several downstream servers located on the internal network. A firewall separates the upstream server from the downstream servers.

You plan to deploy a human resources application to a new server named HRServer5. HRServer5 contains a FAT32-formatted data volume.

The CIO of Contoso identifies the following requirements for the company's IT department:

- Deploy failover cluster to two new virtual machines.
- Store all application databases by using Encrypted File System (EFS).
- Ensure that each Windows container has a dedicated IP address assigned by a DHCP server.
- Produce a report that lists the processor time used by all of the processes on a server named Server 1 for five hours.

Encrypt all communication between the internal network and the perimeter network, including all WSUS communications.

- Automatically load balance the virtual machines hosted in the Hyper-V cluster when processor utilization exceeds 70 percent.

End of Repeated Scenario.

You need to modify the Hyper-V cluster to meet the load balancing requirement for the virtual machine. Which command should you run?

- A. Create a firewall rule 10 allow TCP port 443.
- B. Create a firewall rule to allow TCP port 8531.
- C. Require-SSl on the Client WebService virtual directory.
- D. Require SSI on the Inventory virtual directory.

Answer: D

NEW QUESTION 192

Note: This question is part of a series of questions that present the same scenario. Each question in the series contains a unique solution that might meet the stated goals. Some question sets might have more than one correct solution, while others might not have a correct solution.

After you answer a question in this section, you will NOT be able to return to it. As a result, these questions will not appear in the review screen.

You have a server named Server1 that runs Windows Server 2016. Server1 is a Docker Host.

You are creating a Dockerfile to build 3 Docker images.

You need to add a file named File1.txt from Server1 to C:\folder1\ in the Docker image.

What are two possible commands that you can use to achieve the goal? Each correct answer presents a complete solution.

NOTE: Each correct selection is worth one point.

- A. COPY file1.txt c:/folder1/
- B. copy-item file1.txt folder1\file1.txt
- C. ROBOCOPY file.txt \folder1\
- D. XCOPY file1.txt c:\folder1\
- E. ADD file1.txt /folder1/

Answer: AE

NEW QUESTION 195

You have a Windows Server 2016 failover cluster named Cluster1 that contains four nodes named Server1, Server2, Server3, and Server4. Cluster1 hosts 40 virtual machines that are distributed evenly across the nodes.

Server1 and Server2 are located in a data center in Madrid. Server3 and Server4 are located in a data center in Barcelona.

You need to ensure that when you pause a node, the clustered virtual machines will always attempt to move automatically to another node in the same data center before attempting to move to a node in the other data center.

Which two actions should you perform?

Each correct answer presents part of the solution.

- A. Run the New-ClusterFaultDomain cmdlet.
- B. Configure a file share witness for each data center.
- C. Create an Active Directory site for each data center.
- D. Run the Set-Cluster FaultDomain cmdlet.
- E. Run the Add-ClusterGroup cmdlet.
- F. Change the quorum configuration of the cluster to Node Majority.

Answer: CE

NEW QUESTION 200

You have two servers named Server1 and Server2 that run Windows Server 2016.

Server1 and Server2 are nodes in a Network Load Balancing (NLB) cluster. The Web Server (IIS) role is installed on each node.

Users report that when they submit web form data, sometimes the data is not stored, and they must fill in the form again.

You need to resolve the issue. The solution must ensure that connections are load balanced between Server1 and Server2.

What should you do in the NLB cluster?

- A. Modify the existing port rules.
- B. Modify the Cluster operation mode.
- C. Add the Microsoft Load Balancing/Failover Provider service to all of the network adapters.
- D. Add an IP address.

Answer: B

NEW QUESTION 201

You have two Hyper-V hosts named Server1 and Server2 that run Windows Server 2016. The hosts are nodes in a failover cluster.

A highly available virtual machine named VM1 is running on Server1. You need to move VM1 to Server2 while minimizing downtime.

What should you do?

- A. From Windows PowerShell, run Move-ClusterGroup
- B. From Hyper-V Manager, use the Move action.
- C. From Failover Cluster Manager, use the Move Virtual Machine Storage option.
- D. From Windows PowerShell, run Move-VM.

Answer: A

NEW QUESTION 203

HOTSPOT

You deploy a new Hyper-V host named Server1 that runs Windows Server 2016. You implement receive side scaling (RSS) on Server1.

The chipset on Server1 does not support NetDMA.

All of the equipment on your network supports 10-Gbps connectivity. On Server1, you deploy a virtual machine named VM1.

You configure VM1 to aggregate all of the Windows and non-Windows log files for all of the servers on the network.

VM1 has four virtual processors.

You discover that VM1 drops packets.

Which two options should you run? To answer, select the appropriate options in the answer area.

Answer Area

First action:

Enable TCP Chimney Offload on Server1.
Enable single root I/O virtualization (SR-IOV) on VM1.
Enable virtual machine queue (VMQ) on Server1 and VM1.

Second action:

Enable virtual TCP Chimney Offload on VM1.
Enable virtual Receive-side Scalling (vRSS) on VM1.
Enable single root I/O virtualization (SR-IOV) on Server1.

- A. Mastered
- B. Not Mastered

Answer: A

Explanation:

Answer Area

First action:

Enable TCP Chimney Offload on Server1.
Enable single root I/O virtualization (SR-IOV) on VM1.
Enable virtual machine queue (VMQ) on Server1 and VM1.

Second action:

Enable virtual TCP Chimney Offload on VM1.
Enable virtual Receive-side Scalling (vRSS) on VM1.
Enable single root I/O virtualization (SR-IOV) on Server1.

NEW QUESTION 208

You have a server named Server1 that runs Windows Server 2016. The Docker daemon run on Server1.

You need to ensure that members of a security group named Docker Administrators administer Docker.

What should you do?

- A. Run the Set-Service cmdlet.
- B. Run the sc config command.
- C. Modify the Security settings of Docker
- D. Modify the Security settings of Docker.exe.

Answer: B

Explanation:

<https://docs.microsoft.com/en-us/virtualization/windowscontainers/manage-docker/configure-docker-daemon>

NEW QUESTION 209

HOTSPOT

You have a server named Server1 that runs Windows Server 2016. You mount an image of Windows Server 2016 to C:\Folder1\.

You need to disable support for SMB 1.0 in the image.

Which command should you run? To answer, select the appropriate options in the answer area. NOTE: Each correct selection is worth one point.

Answer Area

<div>▼</div> <div>/Image:</div> <div> <div>dism.exe</div> <div>msconfig.exe</div> <div>sconfig.cmd</div> <div>setup.exe</div> </div>	<div>▼</div> <div>/Image:</div> <div> <div>C:\Folder1</div> <div>C:\Folder1\Windows</div> <div>C:\Folder1\Windows\WinSxS</div> <div>C:\Windows</div> <div>C:\Windows\WinSxs</div> </div>	<div>▼</div> <div>/Disable-Feature /FeatureName:SMB1Protocol</div>
--	--	--

- A. Mastered
- B. Not Mastered

Answer: A

Explanation:

References: <https://docs.microsoft.com/en-us/windows-hardware/manufacture/desktop/enable-or-disable-windows-features-using-dism>

NEW QUESTION 211

HOTSPOT

You have a server named Server1 that runs Windows Server 2016. You create a storage pool named Pool1. Pool1 contains three disks.

You need to create a two-way mirror storage space from the disks in Pool1.

Which command should you run? To answer, select the appropriate options in the answer area. NOTE: Each correct selection is worth one point.

Answer Area

<div>▼</div> <div>New-StorageSunnySystemVirtualDisk</div> <div>New-VHD</div> <div>New-VirtualDisk</div> <div>New-Volume</div>	<div>▼</div> <div>-StoragePoolFirendlyName Pool1 -FirendlyName Space1-</div> <div>-UseMaximumSize -ResiliencySettingName Mirror</div>
<div>-NumberOfDataCopies</div> <div> <div>▼</div> <div>1</div> <div>2</div> <div>3</div> </div>	<div>-NumberOfColumns-</div> <div> <div>▼</div> <div>1</div> <div>2</div> <div>3</div> </div>

- A. Mastered
- B. Not Mastered

Answer: A

Explanation:

References: <https://charbelnemnom.com/2014/09/step-by-step-how-to-create-a-two-way-mirrored-storage-space-via-powershell-storagespaces-powershell/>

NEW QUESTION 212

You have a Windows Server 2016 failover cluster 1 that contains four nodes named Server1, Server2, Server3, Server4, Cluster1 hosts 40 virtual machines that

are distributed evenly across the nodes. Server1 and Server2 are located in a data center in Madrid. Server3 and Server4 are located in a data center in Barcelona.

You need to ensure that when you pause a node in the other data center.

Which two actions should you perform? Each correct answer present part of the solution.

- A. Run the New-Cluster Fault Domain cmdlet.
- B. Run the Add-Cluster Group cmdlet.
- C. Configure a file share witness for each data center.
- D. Run the Set-Cluster Fault Domain cmdlet.
- E. Create an Active Directory site for each data center.
- F. Change the quorum configuration of the cluster to Node Majority.

Answer: BD

NEW QUESTION 216

DRAG DROP

Your network contains an Active Directory domain named contoso.com. The domain has two clusters named FC1 and FC2.

The domain contains servers that run Windows Server 2016. The Servers are configured as shown in the following table.

Server name	Processor	Memory	Cluster
Server1	Intel Xeon E3	128 GB	FC1
Server2	Intel Xeon E3	128 GB	FC1
Server3	Intel Xeon E3	256 GB	FC2
Server4	Intel Xeon E3	256 GB	FC2

Server1 hosts a highly available virtual machine named VM1.

You need to move VM1 from Server1 to Server3 by using live migration.

Which three actions should you perform in sequence? To answer, move the appropriate actions from the list of actions to the answer area and arrange them in the correct order.

Actions

Answer Area

- Add the Virtual Machine role
- Add the Hyper-V Replica Broker role to FC1 and FC2
- Remove VM1 from FC1
- Perform live migration from Failover Cluster Manager
- Perform live migration from Hyper-V Manager



- A. Mastered
- B. Not Mastered

Answer: A

Explanation:

References: <http://www.checkyourlogs.net/?p=16401>

NEW QUESTION 218

NOTE: This Question is a part of a series of questions that use the same or similar answer choices. An answer choice may be correct for more than one question in the series Each question is independent of the other questions in this series. Information and details provided in a question apply only to that question.

You have a Hyper –V host named server 1 that runs Windows Server 2016 and a two-node scale-out file server cluster named Cluster1.

You need to migrate the storage on VM1 to Cluster1. Which tool should you use?

- A. the clussvc.exe command
- B. the Cluster.exe command
- C. the Computer Management snap-in
- D. the configure hyperv.exe command
- E. the Disk Management snap-in
- F. the Failover Cluster Manager snap-in

G. the Hyper-V Manager snap-in
H. the Server Manager app

Answer: G

NEW QUESTION 221

NOTE: This Question is a part of a series of questions that use the same or similar answer choices. An answer choice may be correct for more than one question in the series. Each question is independent of the other questions in this series. Information and details provided in a question apply only to that question.

You have two- node Hyper-V cluster named Cluster1. A virtual machine named VM1 runs on Cluster1.

You need to configure monitoring of VM1. The solution must move VM1 to a different node if the Print Spooler service on VM1 stops unexpectedly.

Which tool should you use?

- A. the clussvc.exe command
- B. the cluster.exe command
- C. the computer Management snap-in
- D. the configurehyper.exe command
- E. the Disk Management snap-in
- F. the Failover Cluster Manager snap-in
- G. the Hyper-V Manager snap-in
- H. the Server Manager app

Answer: F

NEW QUESTION 226

You have a server named Server1 that runs Windows Server 2016.

Server1 has four SCSI disks and a storage pool named Pool1 that contains three disks. You create a virtual disk named Disk 1 that uses a mirrored layout.

You create a partition named Partition1 that uses all of the available space on Disk 1. You need to extend Partition1.

What should you do first?

- A. From Windows PowerShell, run the Resize-Partition cmdlet.
- B. From Disk Management, modify the properties of Partition1.
- C. From the Storage Pools page in Server Manager, extend a virtual disk.
- D. From Disk Management, extend a volume.

Answer: C

Explanation:

References: <https://charbelnemnom.com/2015/03/step-by-step-how-to-extend-and-resize-a-two- way-mirrored-storage-tiered-space-storagespaces-ws2012r2/>

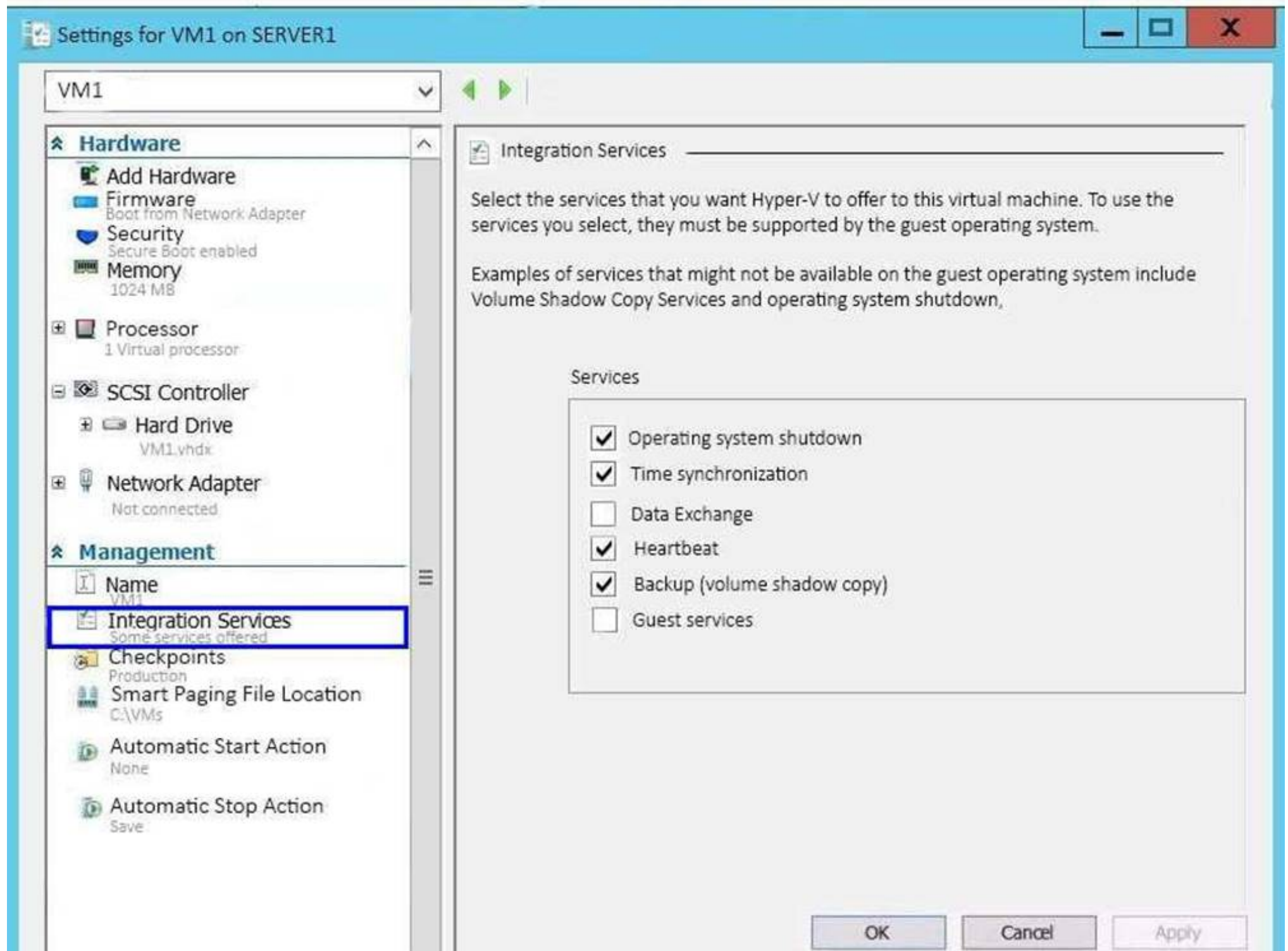
NEW QUESTION 228

Note: This question is part of a series of questions that present the same scenario. Each question in the series contains a unique solution that might meet the stated goals. Some question sets might have more than one correct solution, while others might not have a correct solution.

After you answer a question in this section, you will NOT be able to return to it. As a result, these questions will not appear in the review screen.

You have a Hyper-V host named Server1 that hosts a virtual machine named VM1. Server1 and VM1 run Windows Server 2016.

The settings for VM1 are configured as shown in the exhibit. (Click the Exhibit button.)



You need to ensure that you can use the Copy-VMFile cmdlet on Server1 to copy files from VM1. Solution: You enable the Guest services integration service for VM1.

Does this meet the goal?

- A. Yes
- B. No

Answer: A

Explanation:

References: [https://technet.microsoft.com/en-us/library/dn798297\(v=ws.11\).aspx](https://technet.microsoft.com/en-us/library/dn798297(v=ws.11).aspx)

NEW QUESTION 229

You have a file server named Server1 that runs Windows Server 2016. Object access auditing is configured on Server1. You need to filter the Security event log to show all log entries that relate to a user named User1. What should you do?

- A. Right-click the Security log, and then click Filter Current Log... On the Filter tab, type a value in the User box.
- B. Right-click the Security log, and then click Filter Current Log... On the Filter tab, select a value from the Event sources box.
- C. Right-click the Security log, and then click Create Custom View... On the Filter tab, type a value in the User box.
- D. Right-click the Security log, and then click Filter Current Log... On the XML tab, modify the QueryList entry and set an EventData tag.

Answer: A

Explanation:

Right clicking the event log name and selecting the "Filter Current Log" will display various options for filtering the event log.

These options are:

References: <https://blogs.technet.microsoft.com/rmilne/2014/08/06/quick-tip-event-viewer-filtering/>

NEW QUESTION 233

Note: This question is part of a series of questions that present the same scenario. Each question in the series contains a unique solution that might meet the stated goals. Some question sets might have more than one correct solution, while others might not have a correct solution.

After you answer a question in this section, you will NOT be able to return to it. As a result, these questions will not appear in the review screen.

Your network contains an Active Directory forest.

You install Windows Server 2016 on 10 virtual machines.

You need to deploy the Web Server (IIS) server role identically to the virtual machines.

Solution: You use Windows PowerShell Desired State Configuration (DSC) to create a default configuration, and then you apply the configuration to the virtual machines.

Does this meet the goal?

- A. Yes
- B. No

Answer: A

Explanation:

References:

<https://www.simple-talk.com/sysadmin/powershell/powershell-desired-state-configuration-the-basics/>

NEW QUESTION 237

You have Nano Server image named Disk1.vhdx. You mount Disk1.vhdx.

You need to add a folder that contains several files to the image. Which tool or cmdlet you should use?

- A. File Explore.
- B. Add-Windows Image
- C. Nano Server Image Builder
- D. Dism

Answer: D

NEW QUESTION 239

You have a server named Server1 that runs Windows Server 2016 You install the Docker daemon on

Server1 You need to configure the Docker daemon to accept connections only on TCP port 64500. What should you do?

- A. Run theNew-NetFirewallRulecmdlet
- B. Run theSet-ServiceWindows PowerShell cmdlet.
- C. Run the sc config command.
- D. Run the sc control command.

Answer: C

NEW QUESTION 240

HOTSPOT

You have a Hyper-V host named Server1 that runs Windows Server 2016 datacenter. Server1 is activated.

On Server1, you deploy a virtual machine named VM1 that has a Server Core installation of Windows Server 2016 Standard.

You need to activate VM1 by using Automatic Virtual Machine Activation (AVMA).

Which command should you run? To answer, select the appropriate options in the answer area. NOTE: Each correct selection is worth one point.

Answer Area

reg.exe

regsvr32.exe

setup.exe

Set-VM

Set-WindowsProductKey

slmgr.vbs

/ipk

/pkey

/rearm

/unattend:PID=

-ProductKey

C3RCX-M6NRP-6CXC9-TW2F2-4RHYD

- A. Mastered
- B. Not Mastered

Answer: A

Explanation:

References: <https://blogs.technet.microsoft.com/askcore/2013/11/13/activating-virtual-machines-via-automatic-virtual-machine-activation-in-windows-server-2012-r2/>

NEW QUESTION 245

You have a server named Server1 that runs Windows Server 2016. Server1 has two network adapters that support single root I/O virtualization (SR-IOV). The network adapters are from two different vendors.

You plan to install the Hyper-V server role on Server1, and then to create a virtual machine named VM1 that runs Windows Server 2016. VM1 will use SR-IOV.

You need to ensure that VM1 can use both network adapters for load balancing and failover. What should you do?

- A. On Server1, create two virtual switches without embedded teamin
- B. On VM1, create one NIC team.
- C. On Server1, create one virtual switch without embedded teamin

- D. On VM1, create one NIC team.
- E. On Server1, create one NIC tea
- F. On VM1, create one NIC team.
- G. On Server1, create one virtual switch that has embedded teamin
- H. On VM1, create two NIC teams.

Answer: A

NEW QUESTION 246

You have a server named VM1. VM1 is a virtual machine on a Hyper-V host that runs Windows Server 2016. You need to create a checkpoint that includes the virtual machine memory state of VM1.

What command should you run? To answer, select the appropriate options in the answer area.

<div><div>▼</div><div>Checkpoint-VM</div><div>Get-VMSnapshot</div><div>Set-VM</div></div>	<code>-Name VM1 -CheckpointType</code>	<div><div>▼</div><div>Production</div><div>ProductionOnly</div><div>Standard</div></div>
<div><div>▼</div><div>Checkpoint-VM</div><div>Export-VMSnapshot</div><div>Get-VHDSnapshot</div></div>	<code>-Name VM1 -SnapshotName Snapshot1</code>	

- A. Mastered
- B. Not Mastered

Answer: A

Explanation:

References:

<https://docs.microsoft.com/en-us/virtualization/hyper-v-on-windows/user-guide/checkpoints>

NEW QUESTION 247

Your network contains an Active Directory domain named contoso.com. The domain contains two servers named Server1 and Server2 that run Windows Server 2016. Server1 and Server2 have multiple local disks attached.

You need to create a storage pool by using Storage Spaces Direct.

Which three actions should you perform in sequence? To answer, move the appropriate actions from the list of actions to the answer area and arrange them in the correct order.

Actions	Answer Area
From Server1, run the New-SpacesPool cmdlet.	
On Server1 and Server2, install the Failover Clustering feature.	
From Server1, run the New-StorageFileServer cmdlet.	
From Server1, run the New-Cluster cmdlet.	
On Server1 and Server2, install the Storage Replica feature.	
From Server1, run the Enable-ClusterStorageSpacesDirect cmdlet.	
On Server1 and Server2, install the File Server role service.	

- A. Mastered
- B. Not Mastered

Answer: A

Explanation:

References:

<https://docs.microsoft.com/en-us/windows-server/storage/storage-spaces/deploy-storage-spaces-direct>

NEW QUESTION 249

You have a server named Server1 that runs Windows Server 2016. Windows Defender is enabled on Server1.

Server1 runs an application named App1 that stores various types of files in Microsoft OneDrive for Business, MicrosoftOneDrive, and Microsoft SharePoint Online. App1 also interacts with several local services.

You need to prevent Windows Defender from scanning any files opened by App1. What should you do on Server1?

- A. Run the Set-ExecutionPolicy cmdlet.
- B. Run the New-AppLockerPolicy cmdlet.
- C. Modify the real-time protection settings in Windows Defender.
- D. Run the Add-MpPreference cmdlet.

Answer: D

Explanation:

References:

<https://docs.microsoft.com/en-us/windows/security/threat-protection/windows-defender-antivirus/configure-proc>

NEW QUESTION 251

.....

Thank You for Trying Our Product

* 100% Pass or Money Back

All our products come with a 90-day Money Back Guarantee.

* One year free update

You can enjoy free update one year. 24x7 online support.

* Trusted by Millions

We currently serve more than 30,000,000 customers.

* Shop Securely

All transactions are protected by VeriSign!

100% Pass Your 70-740 Exam with Our Prep Materials Via below:

<https://www.certleader.com/70-740-dumps.html>