

98-349 Dumps

Windows Operating System Fundamentals

<https://www.certleader.com/98-349-dumps.html>



NEW QUESTION 1

- (Exam Topic 1)

Which describes the purpose of Power Saver mode for a portable computer?

- A. To lock the computer when it is idle
- B. To prevent unauthorized programs from consuming resources
- C. To protect the display from burned-in images
- D. To shut down idle devices to conserve battery charge

Answer: D

NEW QUESTION 2

- (Exam Topic 1)

Which is the fastest way to ensure that new desktop icons align into straight columns and rows?

- A. Right-click Desktop, select Properties, and then click Appearance.
- B. Right-click Desktop, select View, and then click Auto arrange icons.
- C. Right-click Taskbar, select Tile Vertically, and then click Tile Horizontally.
- D. Right-click Desktop and select Refresh.

Answer: B

NEW QUESTION 3

- (Exam Topic 1)

Every time you insert a music CD, you receive a dialog box that asks which action you want Windows to perform.

Which should you configure so that your personal computer automatically identifies an audio CD and starts playing music?

- A. The Autoplay settings
- B. The Ease of Access settings
- C. A desktop gadget
- D. The Personalization settings

Answer: A

NEW QUESTION 4

- (Exam Topic 1)

The Remote Desktop Connection is used to:

- A. search the Internet.
- B. attend a webinar.
- C. access another personal computer.
- D. conduct a Lync Online Meeting.

Answer: C

NEW QUESTION 5

- (Exam Topic 1)

Windows hides some files by default to:

- A. Avoid accidental modification or deletion of system files.
- B. Protect the confidentiality of the contents of files.
- C. Improve access to system files.
- D. Save disk space.

Answer: A

NEW QUESTION 6

- (Exam Topic 1)

Which feature allows you to create a new virtual application?

- A. Application Virtualization Sequencer
- B. Windows Installer
- C. Remote Desktop Connection
- D. Windows Virtual PC

Answer: A

NEW QUESTION 7

- (Exam Topic 1)

Which is the largest single file that you can store on a FAT32 file system?

- A. 4GB
- B. 8GB
- C. 16GB
- D. 32GB

Answer: A

NEW QUESTION 8

- (Exam Topic 1)

Which two descriptions of Windows PowerShell are accurate? (Choose two.)

- A. A utility for upgrading your Windows operating system
- B. Designed to synchronize files between a computer and a network location
- C. Allows you to run scripts to perform various administrative tasks
- D. An interface that is an enhancement of the capabilities of the Windows Command window

Answer: CD

NEW QUESTION 9

- (Exam Topic 1)

Which prevents you from establishing a Remote Desktop connection to a remote computer?

- A. Incorrect monitor settings in Device Manager.
- B. Incorrect screen resolution in the Display Properties dialog box.
- C. Incorrect port settings in Windows Firewall.
- D. Incorrect security settings in Internet Explorer.

Answer: C

NEW QUESTION 10

- (Exam Topic 1)

Which Windows component should you use to make a copy of all files on your computer?

- A. Disk Cleanup
- B. System Image Backup
- C. System Restore
- D. Disk Management

Answer: B

NEW QUESTION 10

- (Exam Topic 1)

Which feature should you use to install the most recent definitions for Windows Defender?

- A. Windows Update
- B. Sync Center
- C. Windows Installer
- D. Programs and Features

Answer: A

NEW QUESTION 12

- (Exam Topic 1)

Which feature allows you to transfer information from your computer to your mobile phone?

- A. Windows Mobility Center
- B. Device Manager
- C. Sync Center
- D. Windows Easy Transfer

Answer: B

Explanation:

Ref:

<http://windows.microsoft.com/en-us/windows7/sync-music-pictures-contacts-and-calendars-with-a-mobile-devic>

NEW QUESTION 15

- (Exam Topic 1)

Which feature allows you to change the display resolution of a computer monitor?

- A. Computer Management Console
- B. System Configuration Tool
- C. Appearance and Personalization
- D. Device Manager

Answer: C

NEW QUESTION 19

- (Exam Topic 1)

Which Windows feature allows you to roll back your computer's settings to a previous date and time?

- A. System Restore
- B. Safe Mode
- C. Disk Cloning
- D. Disk Mirroring

Answer: A

NEW QUESTION 22

- (Exam Topic 1)

Which two features are supported by the Infrared Data Association (IrDA) protocol? (Each correct answer presents a complete solution. Choose two.)

- A. Data can be transferred across short distances.
- B. One computer can control another computer through a wireless connection.
- C. Some features of another computer can be controlled by using a remote control unit.
- D. The computer can identify Bluetooth devices.

Answer: AC

NEW QUESTION 27

- (Exam Topic 1)

You need to enable connection to a Bluetooth device.

What should you do? (To answer, move the four appropriate actions from the list of actions to the answer area and arrange them in the correct order.)

Find and pair the device.

Add a Bluetooth adapter to your computer.

Set up a new partnership in Sync Center.

Use the Add Bluetooth Device feature in Control Panel.

Turn on the Bluetooth device and make it discoverable.

Enable **Network Discovery** in Network and Sharing Center.

- A. Mastered
- B. Not Mastered

Answer: A

Explanation:

Box 1: Add a Bluetooth adapter to your computer.

Box 2: Turn on the Bluetooth device and make it discoverable. Box 3: Use the Add Bluetooth Device feature in Control Panel. Box 4: Find and pair the device

Note:

Step 1: Add a Bluetooth adapter to your computer if it doesn't already have one. You can do this by plugging the adapter into a USB port.

Step 2: Set up the Bluetooth enabled device so that your computer can find it. To do this, you must first:

Turn the device on. Make it discoverable.

Step 3 – step 4: To add a Bluetooth enabled device

Once you've verified that a Bluetooth adapter is installed on your computer, and the device you want to connect with is discoverable, you can add most Bluetooth enabled devices to your computer. Here's how:

Open Devices and Printers by clicking the Start button Picture of the Start button, and then, on the Start menu, clicking Devices and Printers.

Click Add a device, and then follow the instructions.

Click the Bluetooth enabled device you want to add to your computer, and then click Next. If you don't see the device you want to add, make sure the device is turned on and discoverable. If you just turned on the device, it may take Windows several seconds to detect it.

Windows might ask you to enter a pairing code (sometimes called a PIN or passcode). Most Bluetooth enabled devices need to be paired with your computer before they can exchange information with each other. To do this, they must exchange protected pairing codes. This means that only the wireless devices you authorize can connect with your computer.

NEW QUESTION 31

- (Exam Topic 1)

You need to be able to access a file stored in a shared folder on your network even when you are disconnected from the network. What should you do?

- A. Configure the folder permissions as Read/Write.
- B. Make the folder available offline.
- C. From Control Panel, use Network and Internet.
- D. Type the IP address of the network computer in the Address field of Internet Explorer.

Answer: B

NEW QUESTION 36

- (Exam Topic 1)

You need a script to run at a specific time. Which Windows component should you use?

- A. Task Manager
- B. Device Manager
- C. Task Scheduler
- D. Event Viewer

Answer: C

NEW QUESTION 38

- (Exam Topic 1)

You want to upgrade your computer from Windows Vista to Windows 7.

What is the minimum processor speed required to run a 64-bit version of Windows 7?

- A. 800 MHz
- B. 1.0 GHz
- C. 1.2 GHz
- D. 1.8 GHz

Answer: B

NEW QUESTION 43

- (Exam Topic 1)

Windows Aero is a:

- A. Pointing device
- B. Device driver
- C. Desktop theme
- D. Windows application

Answer: C

NEW QUESTION 46

- (Exam Topic 1)

You need to upgrade your computer from the FAT file system to an NTFS file system. What should you do?

- A. Use the Backup and Restore tool.
- B. Clear the hard disk drive by using the Format tool.
- C. Use the Convert C:/fs:ntfs command.
- D. Run the Windows Easy Transfer tool.

Answer: C

NEW QUESTION 51

- (Exam Topic 1)

Where should you view the list of services on your Windows 7 computer?

- A. From the Windows Task Manager dialog box
- B. From the Windows Registry
- C. From the System Properties dialog box
- D. From the Windows Action Center

Answer: A

NEW QUESTION 54

- (Exam Topic 1)

You want to view a folder of pictures from an external hard disk drive in your Windows 7 Pictures library. What should you do?

- A. Use the Include in Library menu to add the folder in Windows Explorer.
- B. Create a connection to the folders by using the Network and Sharing Center.
- C. Access the pictures by using a shared folder.
- D. Enable password-protected sharing.

Answer: C

NEW QUESTION 57

- (Exam Topic 1)

You want to repair Windows by using the Windows 7 System Recovery Disc. Before you begin, which files should you back up to protect your personal data?

- A. All files in the Program Files directory.
- B. All files in the Windows directory.
- C. All files in drive C.
- D. Everything in My Documents.

Answer: D

NEW QUESTION 60

- (Exam Topic 1)

Which Windows technology increases system performance by using flash memory?

- A. Direct Memory Access
- B. File compression
- C. Connect Now
- D. ReadyBoost

Answer: D

NEW QUESTION 62

- (Exam Topic 1)

You want to change the default printer used by the Quick Print feature in some applications. Where should you change the Windows default printer?

- A. In the printer's Properties window
- B. In the print queue
- C. Within the Print Setup page
- D. Within the Devices and Printers user interface

Answer: D

NEW QUESTION 63

- (Exam Topic 1)

Which file system is designed for transfer of large files between a personal computer and flash devices?

- A. FAT16 file system
- B. FAT32 file system
- C. exFAT file system
- D. NTFS file system

Answer: C

NEW QUESTION 66

- (Exam Topic 1)

BitLocker prevents:

- A. The operating system from overwriting protected sectors on the hard disk drive.
- B. Unauthorized users from accessing the Internet.
- C. Unauthorized access to files.
- D. Programs from accessing the memory of other programs.

Answer: C

NEW QUESTION 69

- (Exam Topic 1)

Which Windows feature allows you to run a program on your computer that is installed on another computer?

- A. Windows Virtual PC
- B. Microsoft Application Virtualization
- C. Remote Desktop Connection
- D. System Center Service Manager

Answer: B

NEW QUESTION 70

- (Exam Topic 1)

Which Windows feature allows secure printing over the Internet?

- A. Secure Transfer Protocol (STP)
- B. Internet Printing Protocol (IPP) by using HTTPS
- C. Voce over Internet Protocol (VoIP)
- D. Web2Print

Answer: B

NEW QUESTION 71

- (Exam Topic 1)

The Windows Action Center allows you to:

- A. Choose options during system startup.
- B. View alerts and take appropriate actions to keep Windows running smoothly.
- C. View and modify settings of installed programs.

D. Manage the documents in the print queue.

Answer: B

NEW QUESTION 75

- (Exam Topic 1)

You plan to upgrade your computer to Windows 7.

Which tool should you use to find out whether your current applications will run on Windows 7?

- A. Application Compatibility Toolkit
- B. Windows Anytime Upgrade
- C. Windows Update
- D. Windows Service Pack

Answer: A

NEW QUESTION 78

- (Exam Topic 1)

You need to allow others to access your Windows 7 computer by using the Remote Desktop connection. What should you do?

- A. Click Turn on network discovery in Network and Sharing Center.
- B. Enable Remote Desktop Connections in System Properties.
- C. Start the Remote Desktop Connection client in Accessories.
- D. Set the security level to medium in Internet Options.

Answer: B

NEW QUESTION 83

- (Exam Topic 1)

Which Windows feature should you use to find patches for Internet Explorer?

- A. Sync Center
- B. System Information
- C. Internet Properties
- D. Windows Update

Answer: D

NEW QUESTION 88

- (Exam Topic 1)

Where will you find information about removing computer viruses?

- A. Help and Support
- B. System Restore
- C. Disk Cleanup
- D. System Information

Answer: A

NEW QUESTION 89

- (Exam Topic 1)

You need to find out whether your computer has received the most recent critical Windows updates. What should you do?

- A. From the Computer Management console, view Services and Applications.
- B. From Windows Update, select View Update History.
- C. From Administration Tools, view Event Logs.
- D. From Control Panel, use Programs.

Answer: B

NEW QUESTION 93

- (Exam Topic 1)

What is the maximum size of a virtual hard disk?

- A. 2 terabytes
- B. 5 terabytes
- C. 16 terabytes
- D. 500GB

Answer: A

NEW QUESTION 95

- (Exam Topic 1)

Which feature should you use to restrict certain actions only to an administrator account on a Windows 7 computer?

- A. Windows Experience Index
- B. User Account Control
- C. BitLocker
- D. Computer Management

Answer: B

NEW QUESTION 99

- (Exam Topic 1)

You need to install a new webcam on your personal computer.

What should you do? (To answer, move the four appropriate actions from the list of actions to the answer area and arrange them in the correct order.)

Configure the COM ports.		
Configure the Display properties.		
Plug the webcam into a USB port.)	(
Run the setup program provided by the manufacturer.)	(
Use Windows Update to configure the updated driver.		
Allow Windows to locate and add the new hardware.		

- A. Mastered
- B. Not Mastered

Answer: A

Explanation:

Box 1: Plug the webcam into a USB port.

Box 2: Allow Windows to locate and add the new hardware Box 3: Use Windows Update to configure the update driver. Box 4: Run the setup program provided by the manufacturer. Note:

* When you connect an external webcam to your computer for the first time, Windows will recognize it and automatically install a driver for it.

* After installation is complete, check the information that came with your webcam to see if you need to install any additional software.

NEW QUESTION 102

- (Exam Topic 1)

You have several active jobs in the print queue. You need to view the print queue.

What should you do?

- A. Use the Printer icon on the system tray.
- B. Use the Windows Task Manager.
- C. Click the Print button in the application that is printing.
- D. Use the Computer Management console.

Answer: A

NEW QUESTION 104

- (Exam Topic 1)

You need to modify the time displayed in the system tray. Which Control Panel feature should you use?

- A. Appearance and Personalization
- B. Display Properties
- C. Administrative Tools
- D. Clock, Language, and Region

Answer: D

NEW QUESTION 105

- (Exam Topic 1)

You want to connect to a wireless access point. You need to view a list of available networks.

Which two actions should you perform? (Each correct answer presents a complete solution. Choose two.)

- A. Click the network icon in the notification area.

- B. From Control Panel, use Windows Mobility Center.
- C. From Control Panel, use Network and Sharing Center.
- D. From Control Panel, use Sync Center.
- E. From Control Panel, use Ease of Access.

Answer: AC

NEW QUESTION 108

- (Exam Topic 2)

Which name is a default library name in Windows 7?

- A. Music
- B. Downloads
- C. Desktop
- D. Favorites

Answer: A

NEW QUESTION 113

- (Exam Topic 2)

Match the Device Manager icon description to its meaning.

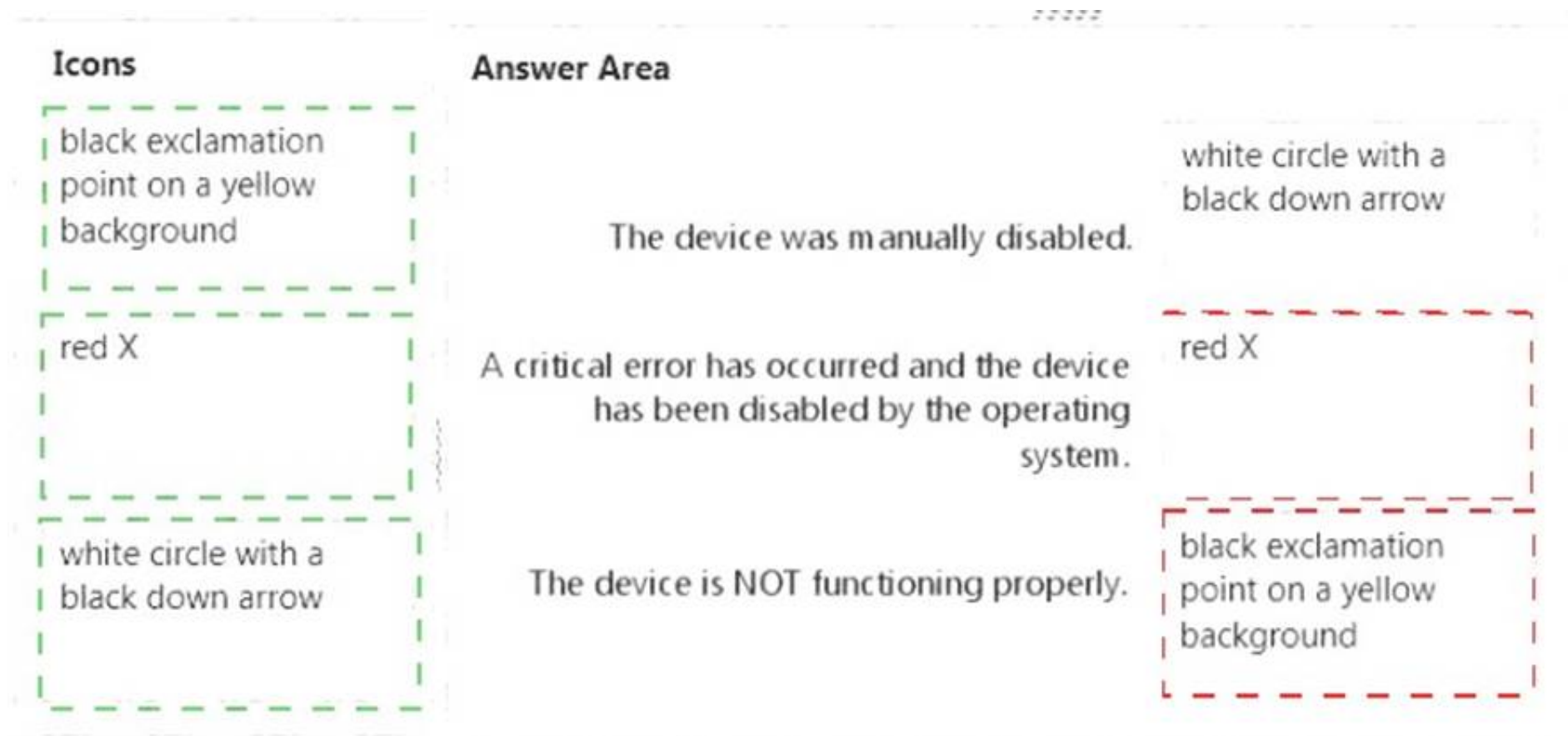
To answer, drag the appropriate icon description from the column on the left to its meaning on the right. Each icon description may be used once, more than once, or not at all. Each correct match is worth one point.

Icons	Answer Area
black exclamation point on a yellow background	The device was manually disabled.
red X	A critical error has occurred and the device has been disabled by the operating system.
white circle with a black down arrow	The device is NOT functioning properly.

- A. Mastered
- B. Not Mastered

Answer: A

Explanation:



NEW QUESTION 118

- (Exam Topic 2)

Which two versions of Windows 7 support the Windows Anytime Upgrade functionality? (Choose two.)

- A. Professional
- B. Ultimate
- C. Enterprise
- D. Starter

Answer: AD

NEW QUESTION 119

- (Exam Topic 2)

You want to use your home computer to access your work computer.

Which two actions should you perform before connecting the computers? (Each correct answer presents part of the solution. Choose two.)

- A. Obtain the IP address of the work computer.
- B. Obtain the IP address of the home computer.
- C. Obtain the MAC address of the home computer.
- D. Allow Remote Desktop on the home computer.
- E. Allow Remote Desktop on the work computer.
- F. Obtain the MAC address of the work computer.

Answer: DE

NEW QUESTION 123

- (Exam Topic 2)

Your roommate has a laptop with Windows 7. Updates install automatically.

Several months ago, your roommate accidentally hid several Windows updates. Now your roommate wants to install them.

You need to unhide these updates in Windows Update so the computer can install them. What should you do?

- A. Unhide the updates from the Change Settings window.
- B. Restore hidden updates from the View Update History window.
- C. Check for new updates and include hidden updates.
- D. Unhide the updates from the Restore Hidden Updates window.

Answer: B

NEW QUESTION 126

- (Exam Topic 2)

You want to upgrade your computer from Windows 8.1 to Windows 10.

What is the minimum processor speed required to run a 64-bit version of Windows 10?

- A. 1.2 GHz
- B. 1.8 GHz
- C. 800 MHz
- D. 1.0 GHz

Answer: D

Explanation:

References:

<https://www.microsoft.com/en-gb/windows/windows-10-specifications>

NEW QUESTION 131

- (Exam Topic 2)

For each of the following statements, select Yes if the statement is true. Otherwise, select No. Each correct selection is worth one point.

Answer Area

	Yes	No
Users logged in to Windows 7 as administrators are given a standard user token in addition to their administrator token.	<input type="radio"/>	<input type="radio"/>
A standard user account is able to make changes to services or drivers that affect other users of the computer.	<input type="radio"/>	<input type="radio"/>
To make changes to how UAC operates, you must be logged in as an administrator.	<input type="radio"/>	<input type="radio"/>

- A. Mastered
B. Not Mastered

Answer: A

Explanation:

Answer Area

	Yes	No
Users logged in to Windows 7 as administrators are given a standard user token in addition to their administrator token.	<input checked="" type="radio"/>	<input type="radio"/>
A standard user account is able to make changes to services or drivers that affect other users of the computer.	<input type="radio"/>	<input checked="" type="radio"/>
To make changes to how UAC operates, you must be logged in as an administrator.	<input checked="" type="radio"/>	<input type="radio"/>

NEW QUESTION 132

- (Exam Topic 2)

In which location of Control Panel will you find the shortcut to manage the services on your Windows 7 computer?

- A. The Hardware and Sound group under Devices and Printers
B. The Programs group under Programs and Features
C. The System and Security group under Administrative Tools
D. The Network and Internet group under Network and Sharing Center

Answer: C

NEW QUESTION 135

- (Exam Topic 2)

This question requires that you evaluate the underlined text to determine if it is correct.

To actively scan for spyware and viruses, you should ensure Action Center is installed and running. Select the correct answer if the underlined text does not make the statement correct. Select "No change is needed" if the underlined text makes the statement correct.

- A. Windows Defender
B. The Malicious Software Removal Tool
C. Microsoft Security Essentials
D. No change is needed.

Answer: C

NEW QUESTION 139

- (Exam Topic 2)

Match the Windows feature to its corresponding usage.

To answer, drag the appropriate Windows feature from the column on the left to its corresponding usage on the right Each Windows feature may be used once, more than once, or not at all. Each correct match is worth one point.

Windows features

- Windows Media Player
- Windows Media Center
- IPCONFIG
- Snipping Tool
- MSCONFIG

Answer Area

- enables screen capture and editing of the captured image

Windows feature
- troubleshoots, enables, and disables startup services

Windows feature
- requires use of the command prompt

Windows feature
- enables media playback, DVR functionality, HDTV capability, and watching live TV

Windows feature

- A. Mastered
B. Not Mastered

Answer: A

Explanation:

Windows features

- Windows Media Player
- Windows Media Center
- IPCONFIG
- Snipping Tool
- MSCONFIG

Answer Area

- enables screen capture and editing of the captured image

Snipping Tool
- troubleshoots, enables, and disables startup services

Windows feature
MSCONFIG
- requires use of the command prompt

IPCONFIG
- enables media playback, DVR functionality, HDTV capability, and watching live TV

Windows Media Center

NEW QUESTION 141

- (Exam Topic 2)

How can you create a connection to a network share without having to type its network address each time you need to connect?

- A. Add the computer to the shared workgroup.
B. Add a Network Location.
C. Map a network drive.
D. Create a HomeGroup.

Answer: C

NEW QUESTION 142

- (Exam Topic 2)

This question requires that you evaluate the underlined text to determine if it is correct. Public folders are located in the My Documents directory. Select the correct answer if the underlined text does not make the statement correct. Select "No change is needed" if the underlined text makes the statement correct.

- A. Documents Library
B. Windows Di rectory
C. Downloads Directory
D. No change is needed

E. User Directory

Answer: E

NEW QUESTION 146

- (Exam Topic 2)

You want to configure Windows to periodically and automatically check for the most recent driver for your video card Which Windows feature should you use?

- A. Windows Update
- B. Device Manager
- C. Windows Installer
- D. Programs and Features

Answer: A

NEW QUESTION 151

- (Exam Topic 2)

You want to share a document with everyone on your school network. Which Windows 7 feature should you use?

- A. Map Network Drive
- B. Public Folder
- C. Computer Management Console
- D. Documents Library

Answer: B

NEW QUESTION 156

- (Exam Topic 2)

Which two versions of Windows 7 support the Encrypting File System (EFS) functionality? (Each correct answer presents a complete solution. Choose two.)

- A. Professional Edition
- B. Ultimate Edition
- C. Home Premium Edition
- D. Starter Edition

Answer: BD

NEW QUESTION 160

- (Exam Topic 2)

You are working as a technical intern for Tailspin Toys. A product developer plans to attend a convention in France and wants to bring a company-owned Windows 7 Ultimate laptop. Your manager is concerned about the security of the information contained on the laptop and asks you to turn on BitLocker.

You receive the error message shown in the following image:



Use the drop-down menus to select the answer choice that completes each statement. Each correct selection is worth one point

Answer Area

You check [answer choice] on the system to see if a TPM was disabled.

If it is determined that the system does not have a TPM, you should use [answer choice] to allow you to enable BitLocker on the computer.

Answer Area

You check [answer choice] on the system to see if a TPM was disabled.

System Bios
Disk Management
Devices and Printers

If it is determined that the system does not have a TPM, you should use [answer choice] to allow you to enable BitLocker on the computer.

Local Security Policy
Disk Management
BitLocker Administration

- A. Mastered
- B. Not Mastered

Answer: A

Explanation:

You check [answer choice] on the system to see if a TPM was disabled.

System Bios

If it is determined that the system does not have a TPM, you should use [answer choice] to allow you to enable BitLocker on the computer.

Local Security Policy

NEW QUESTION 164

- (Exam Topic 2)

You are setting up accounts on your computer so your roommates can log on to your computer and browse the web.

You decide to use the graphical Local Users and Groups tool to configure the user account on your computer. What does the Action display when you select a user name?

- A. A history of all actions you have performed on that user
- B. All pending actions the computer will execute
- C. Buttons to record the action you take on that user
- D. Available actions based on that user

Answer: D

NEW QUESTION 169

- (Exam Topic 2)

The School of Fine Art has a lounge with five computers for visitors to use. You need to configure the computers to improve accessibility.

You open Control Panel and see what is shown in the following image:



Use the drop-down menus to select the answer choice that completes each statement. Each correct selection is worth one point.

Answer Area

Configure [answer choice] to adjust the default volume for the hearing impaired.

Configure [answer choice] to enhance the display to be optimized for the vision impaired.

Answer Area

Configure [answer choice] to adjust the default volume for the hearing impaired.

Appearance and Personalization
Hardware and Sound
System and Security

Configure [answer choice] to enhance the display to be optimized for the vision impaired.

Ease of Access
Programs
System and Security

- A. Mastered
- B. Not Mastered

Answer: A

Explanation:

Configure [answer choice] to adjust the default volume for the hearing impaired.

Hardware and Sound

Configure [answer choice] to enhance the display to be optimized for the visually impaired.

Ease of Access

NEW QUESTION 174

- (Exam Topic 2)

You are an intern at a large company that has various versions of Windows installed on desktops throughout the company.

The Chief Information Officer (CIO) asks you to upgrade as many desktops as possible to Windows 10 Enterprise.

Which two versions of Windows can be upgraded to Windows 10 Enterprise? (Choose two.)

- A. Windows 7 Ultimate
- B. Windows 8.1 Professional Windows Media Center edition
- C. Windows 8.1 Connected
- D. Windows 8 Core
- E. Windows 8.1 RT

Answer: AB

Explanation:

References:<https://docs.microsoft.com/en-us/windows/deployment/upgrade/windows-10-upgrade-paths>

NEW QUESTION 177

- (Exam Topic 2)

You need to find out the speed of the processor that your Windows 7 computer is running. What should you do?

- A. From Hardware and Sound, select Devices and Printers
- B. From System and Security, select System.
- C. From Administrative Tools, select Event Viewer.
- D. From Administrative Tools, select Services.

Answer: B

NEW QUESTION 182

- (Exam Topic 2)

Where should you configure settings to allow Workgroup users to use a printer connected to your computer?

- A. In the System Configuration Utility
- B. In the Computer Management console
- C. In the Network and Sharing Center
- D. In the Local Security Policy editor

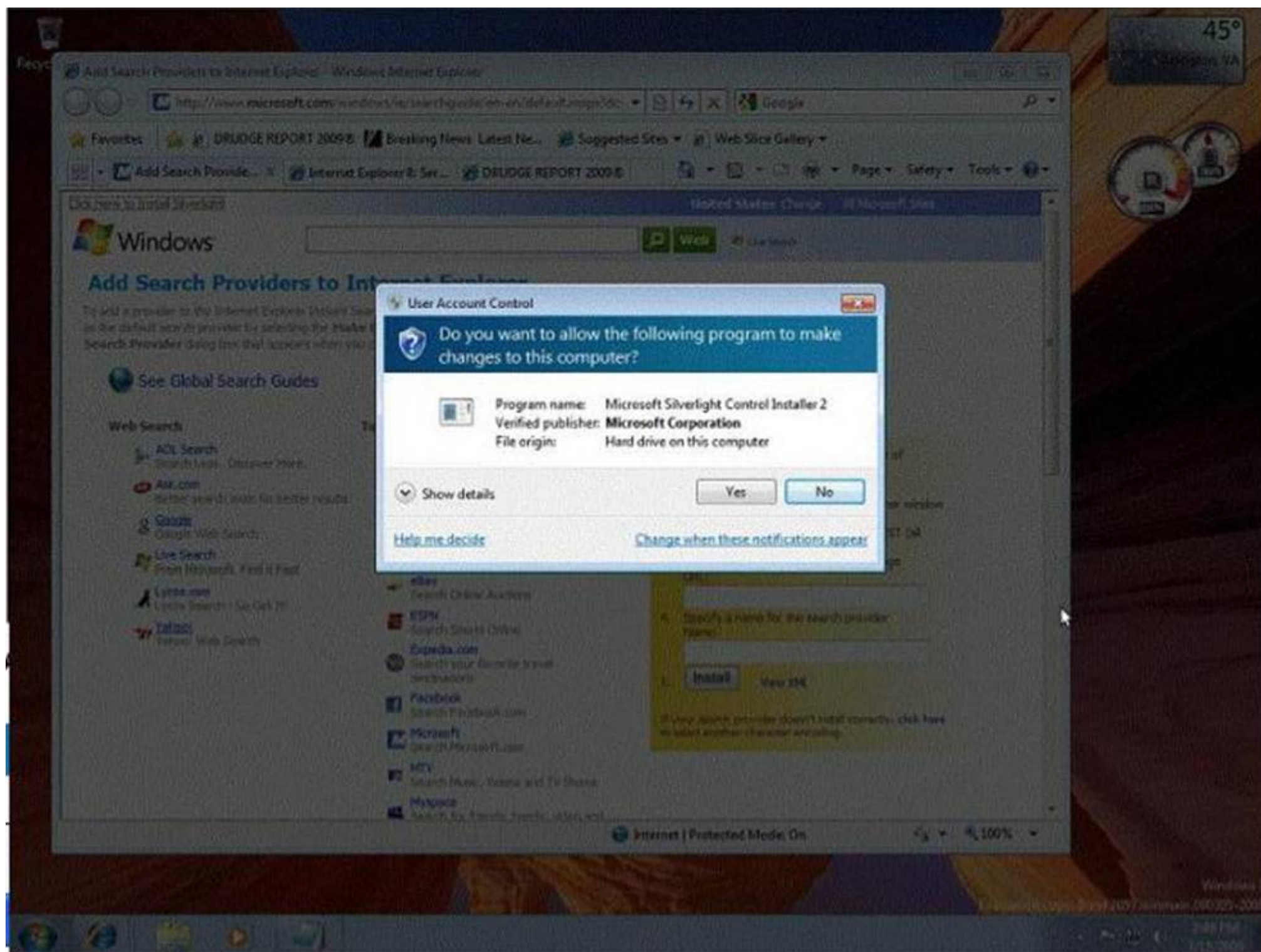
Answer: C

NEW QUESTION 184

- (Exam Topic 2)

You are an IT intern for a nonprofit organization.

A user in the accounting department receives the message shown in the following image:



You need to explain the message to the user.

Use the drop-down menus to select the answer choice that completes each statement. Each correct selection is worth one point

Answer Area

The dimming of the background behind the dialog box indicates that the message is **[answer choice]**

The question mark icon in the dialog box means Windows believes there is a **[answer choice]** trying to install.

Answer Area

The dimming of the background behind the dialog box indicates that the message is **[answer choice]**

The question mark icon in the dialog box means Windows believes there is a **[answer choice]** trying to install.

A. Mastered
B. Not Mastered

Answer: A

Explanation:

Answer Area

The dimming of the background behind the dialog box indicates that the message is **[answer choice]**

The question mark icon in the dialog box means Windows believes there is a **[answer choice]** trying to install.

	▼
a virus trying to take over, on the secure desktop.	
initiated by a Windows component.	
	▼
malware application	
digitally-signed application	
digitally-unsigned application	

NEW QUESTION 186

- (Exam Topic 2)

You turn on your computer. You receive the following message: "System Disk Not Found." Which Windows feature should you use to restore your computer?

- A. Check Disk (Chkdsk)
- B. Last Known Good Configuration
- C. safe Mode
- D. Automated System Recovery

Answer: C

NEW QUESTION 191

- (Exam Topic 2)

Last time you turned on your computer, Windows started correctly. Now Windows starts but fails before the login prompt. What is the first step you should try to troubleshoot this problem?

- A. Restore a system image to the drive.
- B. Restart the computer, press F8, and select Last Known Good Configuration.
- C. Restart the computer, press F8, and select Safe Mode with Command Prompt.
- D. Restart the computer, press F8, and select Start Windows Normally.

Answer: D

NEW QUESTION 193

- (Exam Topic 2)

Which three methods can be used to unlock files on a BitLocker-protected drive? (Each correct answer presents a complete solution. Choose three.)

- A. Automatically unlocking by logging in as the authorized user
- B. Decompressing the files
- C. Using a Smartcard and a PIN
- D. Copying the files into another folder
- E. Unhiding the files
- F. Using a password

Answer: BCF

NEW QUESTION 194

- (Exam Topic 2)

You need to print a paper to give to your professor. A classmate says you can print to a USB printer, which is connected to another computer.

You try to add to your printer list and get prompted for a password that you do not know. Why does adding the printer to your computer require a password?

- A. Your User ID is not part of the local Administrators group.
- B. Your computer is not part of a domain.
- C. Your computer is not on the same network as the printer.
- D. Password Protected Sharing is enabled.

Answer: D

Explanation:

References:<https://www.recoverlostpassword.com/windows-10/how-to-turn-off-password-protected-sharing-inw>

NEW QUESTION 196

- (Exam Topic 2)

Match the Windows feature to its corresponding usage.

To answer, drag the appropriate Windows feature from the column on the left to its corresponding usage on the right. Each Windows feature may be used once, more than once, or not at all. Each correct match is worth one point.

Windows features	Answer Area	
Windows Media Player	enables screen capture and editing of the captured image	Windows feature
Windows Media Center	troubleshoots, enables, and disables startup services	Windows feature
IPCONFIG	requires use of the command prompt	Windows feature
Snipping Tool	enables media playback, DVR functionality, HDTV capability, and watching live TV	Windows feature
MSCONFIG		

- A. Mastered
B. Not Mastered

Answer: A

Explanation:

Windows features	Answer Area	
Windows Media Player	enables screen capture and editing of the captured image	Snipping Tool
Windows Media Center	troubleshoots, enables, and disables startup services	MSCONFIG
IPCONFIG	requires use of the command prompt	IPCONFIG
Snipping Tool	enables media playback, DVR functionality, HDTV capability, and watching live TV	Windows Media Center
MSCONFIG		

NEW QUESTION 199

- (Exam Topic 2)

This question requires that you evaluate the underlined text to determine if it is correct. ReadyBoost increases system performance by using flash memory. Select the correct answer if the underlined text does not make the statement correct. Select "No change is needed" if the underlined text makes the statement correct.

- A. BitLocker
B. The page file
C. Disk Compression
D. No change is needed

Answer: D

NEW QUESTION 202

- (Exam Topic 2)

Which three tasks can you perform by using Microsoft Management Console (MMC)? (Choose three.)

- A. Add new snap-ins to Windows administrative tools.
B. View a remote user's desktop to troubleshoot and resolve problems.
C. Create Taskpads to provide a custom view of available options.

- D. Create custom consoles containing assortments of administrative tools.
- E. Run cmdlets to run various system operations.
- F. Run a remote server application to perform a function.

Answer: ACD

NEW QUESTION 207

- (Exam Topic 2)

For each of the following statements, select Yes if the statement is true. Otherwise, select No. Each correct selection is worth one point.

Answer Area

	Yes	No
Use MSINFO32.exe to obtain information about your computer system.	<input type="radio"/>	<input type="radio"/>
Use System Information to obtain details about a computer's hardware resources.	<input type="radio"/>	<input type="radio"/>
Use System Information to obtain details about a computer's software environment.	<input type="radio"/>	<input type="radio"/>

- A. Mastered
- B. Not Mastered

Answer: A

Explanation:

Answer Area

	Yes	No
Use MSINFO32.exe to obtain information about your computer system.	<input checked="" type="radio"/>	<input type="radio"/>
Use System Information to obtain details about a computer's hardware resources.	<input checked="" type="radio"/>	<input type="radio"/>
Use System Information to obtain details about a computer's software environment.	<input checked="" type="radio"/>	<input type="radio"/>

NEW QUESTION 210

- (Exam Topic 2)

The owner of a bookstore asks you to help her set up a printer in exchange for a discount on purchases. She has three Windows 7 computers networked through a wireless router and connected through a HomeGroup. She also has a new USB printer and wants to be able to print from any of the three computers.

First, you install the printer on one of the three computers.

What should you do next to share this printer with the HomeGroup?

- A. Connect the printer directly to the network and share it with the HomeGroup.
- B. From Control Panel, select the HomeGroup featur
- C. Make sure that the Printers checkbox is enabled.
- D. Connect to the printer over TCP/IP and then share it with the HomeGroup.
- E. Configure each computer's firewall to allow port 631 because HomeGroup's printer sharing feature uses the IPP protocol.

Answer: B

NEW QUESTION 212

- (Exam Topic 2)

This question requires that you evaluate the underlined text to determine if it is correct.

FAT32 is the preferred file system for Windows 7.

Select the correct answer if the underlined text does not make the statement correct. Select "No change is needed" if the underlined text makes the statement correct.

- A. NTFS
- B. FAT16
- C. EFS
- D. No change is needed

Answer: A

NEW QUESTION 214

- (Exam Topic 2)

For each of the following statements, select Yes if the statement is true. Otherwise, select No. Each correct selection is worth one point.

Answer Area

	Yes	No
Users logged in to Windows 7 as administrators are given a standard user token in addition to their administrator token.	<input type="radio"/>	<input type="radio"/>
A standard user account is able to make changes to services or drivers that affect other users of the computer.	<input type="radio"/>	<input type="radio"/>
To make changes to how UAC operates, you must be logged in as an administrator.	<input type="radio"/>	<input type="radio"/>

- A. Mastered
B. Not Mastered

Answer: A

Explanation:

Answer Area

	Yes	No
Users logged in to Windows 7 as administrators are given a standard user token in addition to their administrator token.	<input checked="" type="radio"/>	<input type="radio"/>
A standard user account is able to make changes to services or drivers that affect other users of the computer.	<input type="radio"/>	<input checked="" type="radio"/>
To make changes to how UAC operates, you must be logged in as an administrator.	<input checked="" type="radio"/>	<input type="radio"/>

NEW QUESTION 216

- (Exam Topic 2)

You need to be able to view multiple time zones on your desktop. What should you do?

- A. Add multiple clock gadgets.
B. Modify the System and Security settings.
C. Configure dual-display.
D. Modify the Date and Time properties of the computer.

Answer: B

NEW QUESTION 220

- (Exam Topic 2)

You attach a second Plug and Play monitor to your computer. You need to configure the computer to use both monitors. What should you do?

- A. Configure the USB port.
B. Use Control Panel to modify settings in the Change display settings dialog box.
C. Use Control Panel to modify settings in Administrative Tools.
D. Access Device Manager and select Update Driver Software.

Answer: B

NEW QUESTION 224

- (Exam Topic 2)

For each of the following statements, select Yes if the statement is true. Otherwise, select No. Each correct selection is worth one point.

Answer Area

	Yes	No
NTFS and FAT32 both support a file size of over 4 GB.	<input type="radio"/>	<input type="radio"/>
NTFS and FAT32 can both use permissions and encryption.	<input type="radio"/>	<input type="radio"/>
NTFS and FAT32 can both be used as the format for Windows 7.	<input type="radio"/>	<input type="radio"/>

- A. Mastered
B. Not Mastered

Answer: A

Explanation:

Answer Area

	Yes	No
NTFS and FAT32 both support a file size of over 4 GB.	<input type="radio"/>	<input checked="" type="radio"/>
NTFS and FAT32 can both use permissions and encryption.	<input type="radio"/>	<input checked="" type="radio"/>
NTFS and FAT32 can both be used as the format for Windows 7.	<input checked="" type="radio"/>	<input type="radio"/>

NEW QUESTION 225

- (Exam Topic 2)

You turn on your computer. You receive the following message: "System Disk Not Found." Which Windows feature should you use to restore your computer?

- A. Automated System Recovery
B. Last Known Good Configuration
C. Check Disk (Chkdsk)
D. Safe Mode

Answer: C

NEW QUESTION 229

- (Exam Topic 2)

Which three of these may be included in a service pack? (Choose three.)

- A. A remote servicing of the operating system
B. A reinstallation of the operating system
C. All previously released important and recommended Windows Updates
D. New functionality
E. Fixes for security issues

Answer: CDE

NEW QUESTION 232

- (Exam Topic 2)

Instructions: For each of the following statements, select Yes if the statement is true. Otherwise, select No. NOTE: Each correct selection is worth one point.

Answer Area

	Yes	No
Launch Action Center from the System Tray to troubleshoot the system problems.	<input type="radio"/>	<input type="radio"/>
Use the System option in the Control Panel System and Security area to defragment.	<input type="radio"/>	<input type="radio"/>
Use the Folder Options selection in the Control Panel Appearance and personalization area to have file extensions appear in Windows Explorer.	<input type="radio"/>	<input type="radio"/>

- A. Mastered
B. Not Mastered

Answer: A

Explanation:

Answer Area

	Yes	No
Launch Action Center from the System Tray to troubleshoot the system problems.	<input checked="" type="radio"/>	<input type="radio"/>
Use the System option in the Control Panel System and Security area to defragment.	<input checked="" type="radio"/>	<input type="radio"/>
Use the Folder Options selection in the Control Panel Appearance and personalization area to have file extensions appear in Windows Explorer.	<input checked="" type="radio"/>	<input type="radio"/>

NEW QUESTION 237

- (Exam Topic 2)

Which folder permission setting will allow users to view and change but not delete files?

- A. Full control
B. Modify
C. Read and Execute
D. Read and Write

Answer: B

NEW QUESTION 240

- (Exam Topic 2)

This question requires that you evaluate the underlined text to determine if it is correct.

To change a file system from FAT32 to NTFS, you should run the fdisk command at the command prompt. Select the correct answer if the underlined text does not make the statement correct. Select "No change is needed" if the underlined text makes the statement correct.

- A. convert
B. diskpart
C. change
D. No change is needed.

Answer: A

NEW QUESTION 241

- (Exam Topic 2)

Which folder permission allows users to view, change, and delete files?

- A. Full Control
- B. Read and Execute
- C. Modify
- D. Read and Write

Answer: A

NEW QUESTION 244

- (Exam Topic 2)

A classmate upgraded her laptop from Windows 8.1 to Windows 10. She wants more information about customizing the Start Menu.

Instructions: For each of the following statements, select Yes if the statement is true?

NOTE: Each correct selection is worth one point.

	Yes	No
The Windows 10 Start Menu can be made larger or smaller by dragging the edges of the menu.	<input type="radio"/>	<input type="radio"/>
Pressing the Windows logo key + G creates a new group on the Windows 10 Start Menu.	<input type="radio"/>	<input type="radio"/>
Selecting a group name in the Windows 10 Start Menu allows you to change its name.	<input type="radio"/>	<input type="radio"/>

- A. Mastered
- B. Not Mastered

Answer: A

Explanation:

	Yes	No
The Windows 10 Start Menu can be made larger or smaller by dragging the edges of the menu.	<input checked="" type="radio"/>	<input type="radio"/>
Pressing the Windows logo key + G creates a new group on the Windows 10 Start Menu.	<input type="radio"/>	<input checked="" type="radio"/>
Selecting a group name in the Windows 10 Start Menu allows you to change its name.	<input type="radio"/>	<input checked="" type="radio"/>

NEW QUESTION 245

- (Exam Topic 2)

For each of the following statements, select Yes if the statement is true. Otherwise, select No. Each correct selection is worth one point.

	Yes	No
An application that is installed by using Group Policy may be uninstalled by using Group Policy.	<input type="radio"/>	<input type="radio"/>
An application that is installed by using Group Policy may be uninstalled by using a script.	<input type="radio"/>	<input type="radio"/>
An application that is installed by using Group Policy may be uninstalled manually.	<input type="radio"/>	<input type="radio"/>

- A. Mastered
- B. Not Mastered

Answer: A

Explanation:

	Yes	No
An application that is installed by using Group Policy may be uninstalled by using Group Policy.	<input checked="" type="radio"/>	<input type="radio"/>
An application that is installed by using Group Policy may be uninstalled by using a script.	<input checked="" type="radio"/>	<input type="radio"/>
An application that is installed by using Group Policy may be uninstalled manually.	<input checked="" type="radio"/>	<input type="radio"/>

NEW QUESTION 247

- (Exam Topic 2)

You need to find out if your Windows XP computer is capable of running Windows 7. Which tool should you use?

- A. Windows Easy Transfer
- B. Windows Upgrade Advisor
- C. Application Compatibility Toolkit
- D. Windows 7 Compatibility Checker

Answer: B

NEW QUESTION 251

- (Exam Topic 2)

Instructions: For each of the following statements, select Yes if the statement is true. Otherwise, select No. NOTE: Each correct selection is worth one point.

	Yes	No
A printer attached to a Windows 10 computer can be shared with other computers running different versions of Windows.	<input type="radio"/>	<input type="radio"/>
If you are only sharing a printer, file and print sharing does not need to be turned on.	<input type="radio"/>	<input type="radio"/>
You can only share one printer that is connected to your computer.	<input type="radio"/>	<input type="radio"/>

- A. Mastered
- B. Not Mastered

Answer: A

Explanation:

	Yes	No
A printer attached to a Windows 10 computer can be shared with other computers running different versions of Windows.	<input checked="" type="radio"/>	<input type="radio"/>
If you are only sharing a printer, file and print sharing does not need to be turned on.	<input type="radio"/>	<input checked="" type="radio"/>
You can only share one printer that is connected to your computer.	<input type="radio"/>	<input checked="" type="radio"/>

NEW QUESTION 253

- (Exam Topic 2)

Your roommate has a Windows 8.1 32-bit laptop and wants to upgrade it to Windows 10 64-bit. What should you tell her about such upgrade?

- A. You need to upgrade the existing operating system, preserving the files, applications, and settings.
- B. You need to perform a new installatio
- C. Files, applications, and settings will be deleted.

- D. You cannot upgrade Windows 8.1 32-bit to Windows 10 64-bit.
E. You need to upgrade to Windows 8.1 64-bit and then upgrade to Windows 10 64-bit.

Answer: B

Explanation:

References:<http://www.intowindows.com/upgrade-to-windows-10-64-bit-from-windows-78-1-32/>

NEW QUESTION 254

- (Exam Topic 2)

This QUESTION NO: requires that you evaluate the underlined text to determine if it is correct.

You can set Windows to automatically install updates for other Microsoft products through Windows Update. Instructions: Review the underlined text. If it makes the statement correct, select "No change is needed." If the statement is incorrect, select the answer choice that makes the statement correct.

- A. No change is needed.
B. Critical updates only
C. Third-party updates
D. Optional updates only

Answer: A

NEW QUESTION 259

- (Exam Topic 2)

This question requires that you evaluate the underlined text to determine if it is correct.

To actively scan for spyware and viruses, you should ensure Action Center is installed and running. Select the correct answer if the underlined text does not make the statement correct. Select "No change is needed" if the underlined text makes the statement correct.

- A. Windows Defender
B. The Malicious Software Removal Tool
C. Microsoft Security Essentials
D. No change is needed.

Answer: C

NEW QUESTION 260

- (Exam Topic 2)

You are preparing to install Windows 7 on a new computer. You need to enable BitLocker for encryption. What is required in order to enable BitLocker?

- A. FAT32 system drive
B. Smart card
C. NTFS system drive
D. Trusted Platform Module (TPM)

Answer: C

NEW QUESTION 262

- (Exam Topic 2)

Instructions: For each of the following statements, select Yes if the statement is true. Otherwise, select No. NOTE: Each correct selection is worth one point.

	Yes	No
The Hyper-V role can be installed on Windows 10 Home.	<input type="radio"/>	<input type="radio"/>
Hyper-V virtual machines can only run Microsoft operating systems.	<input type="radio"/>	<input type="radio"/>
A private, virtual network can be created among virtual machines.	<input type="radio"/>	<input type="radio"/>

- A. Mastered
B. Not Mastered

Answer: A

Explanation:

References: <https://docs.microsoft.com/en-us/virtualization/hyper-v-on-windows/quick-start/enable-hyper-v> [https://docs.microsoft.com/en-us/windows-server/virtualization/hyper-v/Supported-Linux-and-FreeBSD-virtual for-Hyper-V-on-Windows](https://docs.microsoft.com/en-us/windows-server/virtualization/hyper-v/Supported-Linux-and-FreeBSD-virtual-for-Hyper-V-on-Windows)
<https://docs.microsoft.com/en-us/virtualization/hyper-v-on-windows/quick-start/connect-to-network>

NEW QUESTION 265

- (Exam Topic 2)

For each of the following statements, select Yes if the statement is true. Otherwise, select No. Each correct selection is worth one point.

Answer Area	Yes	No
Installing Windows XP Mode requires a separate license for Windows XP.	<input type="radio"/>	<input type="radio"/>
Programs from an XP Mode installation display in both the Windows 7 list of programs and the XP Mode list of programs.	<input type="radio"/>	<input type="radio"/>
Windows XP Mode is available for Windows 7 Home.	<input type="radio"/>	<input type="radio"/>

- A. Mastered
B. Not Mastered

Answer: A

Explanation:

Answer Area	Yes	No
Installing Windows XP Mode requires a separate license for Windows XP.	<input type="radio"/>	<input checked="" type="radio"/>
Programs from an XP Mode installation display in both the Windows 7 list of programs and the XP Mode list of programs.	<input checked="" type="radio"/>	<input type="radio"/>
Windows XP Mode is available for Windows 7 Home.	<input type="radio"/>	<input checked="" type="radio"/>

NEW QUESTION 268

- (Exam Topic 2)

Which two system requirements allow Windows 7 to take advantage of 64-bit processing? (Choose two.)

- A. A minimum of 2 GB of RAM
B. A minimum of 4 GB of RAM
C. A minimum of 16 GB of available hard disk space
D. A minimum of 20 GB of available hard disk space

Answer: AD

NEW QUESTION 273

- (Exam Topic 2)

Last time you turned on your computer, Windows started correctly. Now Windows starts but fails before the login prompt. What is the first step you should try to troubleshoot this problem?

- A. Restart the computer, press F8, and select Safe Mode with Command Prompt.
B. Restore a system image to the drive.
C. Restart the computer, press F8, and select Start Windows Normally.
D. Restart the computer, press F8, and select Last Known Good Configuration.

Answer: D

NEW QUESTION 275

- (Exam Topic 2)

What are two characteristics of Windows Mobility Center? (Choose two.)

- A. Allows you to adjust the brightness of your display
B. Allows your computer to connect to a remote server
C. Allows you to configure power options
D. Provides you with a virtual desktop interface
E. Allows you to access another computer on a network

Answer: AC

NEW QUESTION 278

- (Exam Topic 2)

Two students in your class want to work together on a project over the summer break- Courtney is staying on campus, and Ty is taking an internship in Japan. They want to know how to share files in order to work remotely. You suggest Microsoft OneDrive.

Which three features of OneDrive can help Ty and Courtney? (Choose three.)

- A. OneDrive automatically keeps track of the previous 25 versions of all documents.
- B. OneDrive provides the ability to view and control someone's computer desktop to allow for easier collaboration.
- C. When the OneDrive desktop application is installed on a Windows 7 computer, Microsoft Office applications can save directly to OneDrive folders.
- D. OneDrive provides automatic BitLocker encryption of the files stored in the local OneDrive folder and the OneDrive.com folders.
- E. OneDrive allows access to files from any networked device by using OneDrive.com or a OneDrive application on their mobile device.

Answer: ACE

NEW QUESTION 281

- (Exam Topic 2)

You need to return your Windows system files and settings to an earlier point in time without affecting personal files. What should you do?

- A. Restore a system image to the drive.
- B. Restart the computer, press F8, and select Last Known Good Configuration.
- C. Use the System Restore Wizard.
- D. Restart the computer in Safe Mode.

Answer: C

NEW QUESTION 285

- (Exam Topic 2)

Which two tools should you use to gather basic real-time performance information about the computer's system settings? (Choose two.)

- A. System Properties
- B. Task Manager
- C. System Information
- D. Resource Monitor
- E. Computer Management

Answer: BD

NEW QUESTION 286

- (Exam Topic 2)

A Windows 10 library:

- A. Organizes user files from disparate locations.
- B. Encrypts files by using the Encrypting File System (EFS).
- C. Makes copies of user files in a central location.
- D. Restores files from system backup.

Answer: A

Explanation:

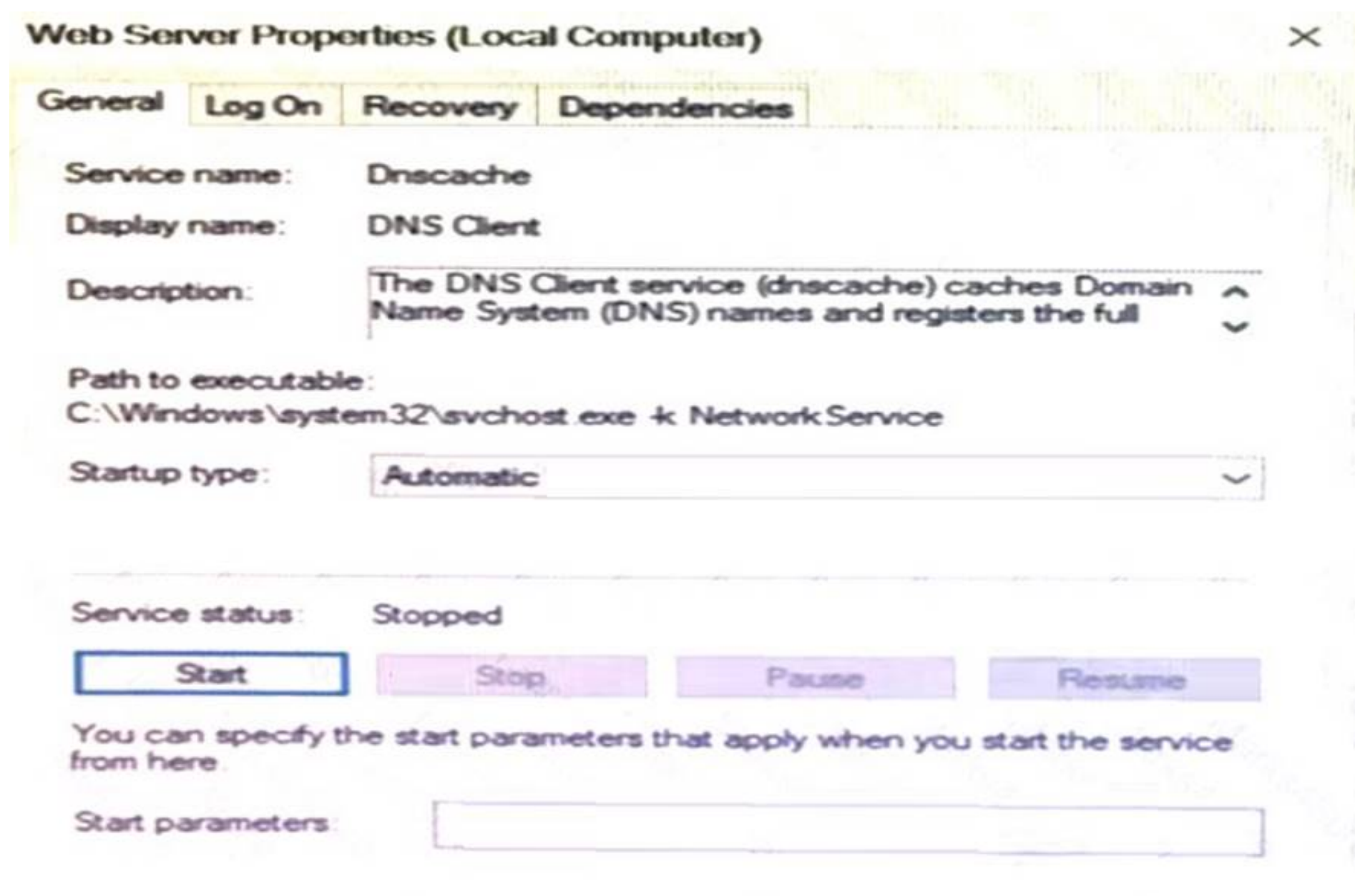
References: <https://docs.microsoft.com/en-us/windows/client-management/windows-libraries>

NEW QUESTION 289

- (Exam Topic 2)

You set up a Web Server for your group project for a Web Development class. You install the Web Server service on your Windows 10 machine. The Web Server service fails to start even though it is set to automatic.

You need to view other services that may have caused the failure. Which area on the graphic should you select to accomplish this goal? Instructions: To answer select the appropriate object in the answer area.



- A. Mastered
- B. Not Mastered

Answer: A

Explanation:

References:<https://www.howtogeek.com/school/using-windows-admin-tools-like-a-pro/lesson8/>

NEW QUESTION 291

- (Exam Topic 2)

What is the largest single file that you can store on an NTFS file system?

- A. 4 TB
- B. 8 TB
- C. 16 TB
- D. 32 GB

Answer: C

NEW QUESTION 292

.....

Thank You for Trying Our Product

* 100% Pass or Money Back

All our products come with a 90-day Money Back Guarantee.

* One year free update

You can enjoy free update one year. 24x7 online support.

* Trusted by Millions

We currently serve more than 30,000,000 customers.

* Shop Securely

All transactions are protected by VeriSign!

100% Pass Your 98-349 Exam with Our Prep Materials Via below:

<https://www.certleader.com/98-349-dumps.html>