



Microsoft

Exam Questions 98-349

Windows Operating System Fundamentals

NEW QUESTION 1

- (Exam Topic 1)

Every time you insert a music CD, you receive a dialog box that asks which action you want Windows to perform.

Which should you configure so that your personal computer automatically identifies an audio CD and starts playing music?

- A. The Autoplay settings
- B. The Ease of Access settings
- C. A desktop gadget
- D. The Personalization settings

Answer: A

NEW QUESTION 2

- (Exam Topic 1)

You need to configure a folder that allows everyone in your group to view and modify files. Which item in the Share With menu should you use?

- A. Specific People
- B. Nobody
- C. Homegroup (Read/Write)
- D. Homegroup (Read)

Answer: C

NEW QUESTION 3

- (Exam Topic 1)

Your computer is running slower than usual.

Where should you look to find out which applications are consuming the maximum number of resources?

- A. Administrative Tools
- B. Device Manager
- C. System Tray
- D. Task Manager
- E. Network and Sharing Center

Answer: D

NEW QUESTION 4

- (Exam Topic 1)

You attempt to update your video driver. Your screen stops responding. You need to be able to restore the previous video driver.

Which Windows feature should you use?

- A. Disk Defragmenter
- B. Disk Cleanup
- C. Check Disk (Chkdsk)
- D. Safe Mode

Answer: D

NEW QUESTION 5

- (Exam Topic 1)

Which feature should you use to install the most recent definitions for Windows Defender?

- A. Windows Update
- B. Sync Center
- C. Windows Installer
- D. Programs and Features

Answer: A

NEW QUESTION 6

- (Exam Topic 1)

Which feature ensures that your personal computer always has the latest patches and fixes for the operating system?

- A. Reliability and Performance Monitor
- B. Programs and Features
- C. System Configuration Utility
- D. Windows Update

Answer: D

NEW QUESTION 7

- (Exam Topic 1)

Which feature allows you to transfer information from your computer to your mobile phone?

- A. Windows Mobility Center

- B. Device Manager
- C. Sync Center
- D. Windows Easy Transfer

Answer: B

Explanation:

Ref:

<http://windows.microsoft.com/en-us/windows7/sync-music-pictures-contacts-and-calendars-with-a-mobile-devic>

NEW QUESTION 8

- (Exam Topic 1)

Which action will trigger a user account control (UAC) prompt in Windows?

- A. Accessing the Internet
- B. Changing the time zone
- C. Installing a new program
- D. Restarting Windows
- E. Changing settings in the Display Properties dialog box

Answer: C

NEW QUESTION 9

- (Exam Topic 1)

You need to upgrade your computer from the FAT file system to an NTFS file system. What should you do?

- A. Use the Backup and Restore tool.
- B. Clear the hard disk drive by using the Format tool.
- C. Use the Convert C:/fs:ntfs command.
- D. Run the Windows Easy Transfer tool.

Answer: C

NEW QUESTION 10

- (Exam Topic 1)

Where should you view the list of services on your Windows 7 computer?

- A. From the Windows Task Manager dialog box
- B. From the Windows Registry
- C. From the System Properties dialog box
- D. From the Windows Action Center

Answer: A

NEW QUESTION 10

- (Exam Topic 1)

What should you do to secure and protect the connection to a Bluetooth device?

- A. Turn off make device discoverable after connecting your devices.
- B. Reset the Bluetooth device to factory default settings after making a connection.
- C. Turn off the Bluetooth device when not in use.
- D. Use unique pairing codes when connecting your devices.

Answer: D

NEW QUESTION 14

- (Exam Topic 1)

Which file system is designed for transfer of large files between a personal computer and flash devices?

- A. FAT16 file system
- B. FAT32 file system
- C. exFAT file system
- D. NTFS file system

Answer: C

NEW QUESTION 15

- (Exam Topic 1)

Which Windows feature allows you to request that someone else control your computer from their computer?

- A. Remote Assistance
- B. Action Center
- C. Sync Center
- D. Connect Now

Answer: A

NEW QUESTION 17

- (Exam Topic 1)

Which Windows feature allows secure printing over the Internet?

- A. Secure Transfer Protocol (STP)
- B. Internet Printing Protocol (IPP) by using HTTPS
- C. Voce over Internet Protocol (VoIP)
- D. Web2Print

Answer: B

NEW QUESTION 22

- (Exam Topic 1)

You plan to upgrade your computer to Windows 7.

Which tool should you use to find out whether your current applications will run on Windows 7?

- A. Application Compatibility Toolkit
- B. Windows Anytime Upgrade
- C. Windows Update
- D. Windows Service Pack

Answer: A

NEW QUESTION 26

- (Exam Topic 1)

Which feature allows you to run applications hosted on network file servers or web servers?

- A. Windows Virtual PC
- B. Remote Desktop Connection
- C. Windows Installer
- D. Application Virtualization Client

Answer: D

NEW QUESTION 28

- (Exam Topic 1)

Which Windows feature should you use to find patches for Internet Explorer?

- A. Sync Center
- B. System Information
- C. Internet Properties
- D. Windows Update

Answer: D

NEW QUESTION 30

- (Exam Topic 1)

Which feature should you use to restrict certain actions only to an administrator account on a Windows 7 computer?

- A. Windows Experience Index
- B. User Account Control
- C. BitLocker
- D. Computer Management

Answer: B

NEW QUESTION 32

- (Exam Topic 1)

You need to manage service dependencies on your Windows 7 computer. Which feature should you use?

- A. Action Center
- B. Event Viewer
- C. Task Scheduler
- D. Computer Management Console

Answer: D

NEW QUESTION 35

- (Exam Topic 1)

You need to install a new webcam on your personal computer.

What should you do? (To answer, move the four appropriate actions from the list of actions to the answer area and arrange them in the correct order.)

Configure the COM ports.		
Configure the Display properties.		
Plug the webcam into a USB port.)	(
Run the setup program provided by the manufacturer.)	(
Use Windows Update to configure the updated driver.		
Allow Windows to locate and add the new hardware.		

- A. Mastered
B. Not Mastered

Answer: A

Explanation:

Box 1: Plug the webcam into a USB port.

Box 2: Allow Windows to locate and add the new hardware Box 3: Use Windows Update to configure the update driver. Box 4: Run the setup program provided by the manufacturer. Note:

* When you connect an external webcam to your computer for the first time, Windows will recognize it and automatically install a driver for it.

* After installation is complete, check the information that came with your webcam to see if you need to install any additional software.

NEW QUESTION 39

- (Exam Topic 1)

Which Windows feature allows you to manually control another Windows computer?

- A. Remote Control Monitor
B. Remote Desktop Connection
C. Remote Power Management
D. Remote Procedure Call

Answer: B

NEW QUESTION 40

- (Exam Topic 2)

You need to find out whether a computer is running a 32-bit or 64-bit version of the Windows operating system. What should you do?

- A. From the Start menu, type 64-bit in the Search programs and files field.
B. From Control Panel, select System.
C. Open Device Manager and select Processors.
D. From the Windows Help and Support feature, type 64-bit system in the Search field.

Answer: B

NEW QUESTION 41

- (Exam Topic 2)

For each of the following statements, select Yes if the statement is true. Otherwise, select No. Each correct selection is worth one point.

Answer Area

	Yes	No
Users logged in to Windows 7 as administrators are given a standard user token in addition to their administrator token.	<input type="radio"/>	<input type="radio"/>
A standard user account is able to make changes to services or drivers that affect other users of the computer.	<input type="radio"/>	<input type="radio"/>
To make changes to how UAC operates, you must be logged in as an administrator.	<input type="radio"/>	<input type="radio"/>

- A. Mastered
- B. Not Mastered

Answer: A

Explanation:

Answer Area

	Yes	No
Users logged in to Windows 7 as administrators are given a standard user token in addition to their administrator token.	<input checked="" type="radio"/>	<input type="radio"/>
A standard user account is able to make changes to services or drivers that affect other users of the computer.	<input type="radio"/>	<input checked="" type="radio"/>
To make changes to how UAC operates, you must be logged in as an administrator.	<input checked="" type="radio"/>	<input type="radio"/>

NEW QUESTION 42

- (Exam Topic 2)

This question requires that you evaluate the underlined text to determine if it is correct.

To actively scan for spyware and viruses, you should ensure Action Center is installed and running. Select the correct answer if the underlined text does not make the statement correct. Select "No change is needed" if the underlined text makes the statement correct.

- A. Windows Defender
- B. The Malicious Software Removal Tool
- C. Microsoft Security Essentials
- D. No change is needed.

Answer: C

NEW QUESTION 44

- (Exam Topic 2)

How can you create a connection to a network share without having to type its network address each time you need to connect?

- A. Add the computer to the shared workgroup.
- B. Add a Network Location.
- C. Map a network drive.
- D. Create a HomeGroup.

Answer: C

NEW QUESTION 48

- (Exam Topic 2)

Which task can be accomplished by a standard user, regardless of the system security settings?

- A. Installing a program
- B. Changing an account name or type
- C. Changing their own password
- D. Adding a driver for new hardware

Answer: D

NEW QUESTION 52

- (Exam Topic 2)

Windows presents a UAC prompt when you configure:

- A. Battery power options
- B. The desktop background
- C. Automatic updates
- D. Accessibility options

Answer: C

NEW QUESTION 55

- (Exam Topic 2)

You want to share a document with everyone on your school network. Which Windows 7 feature should you use?

- A. Map Network Drive
- B. Public Folder
- C. Computer Management Console
- D. Documents Library

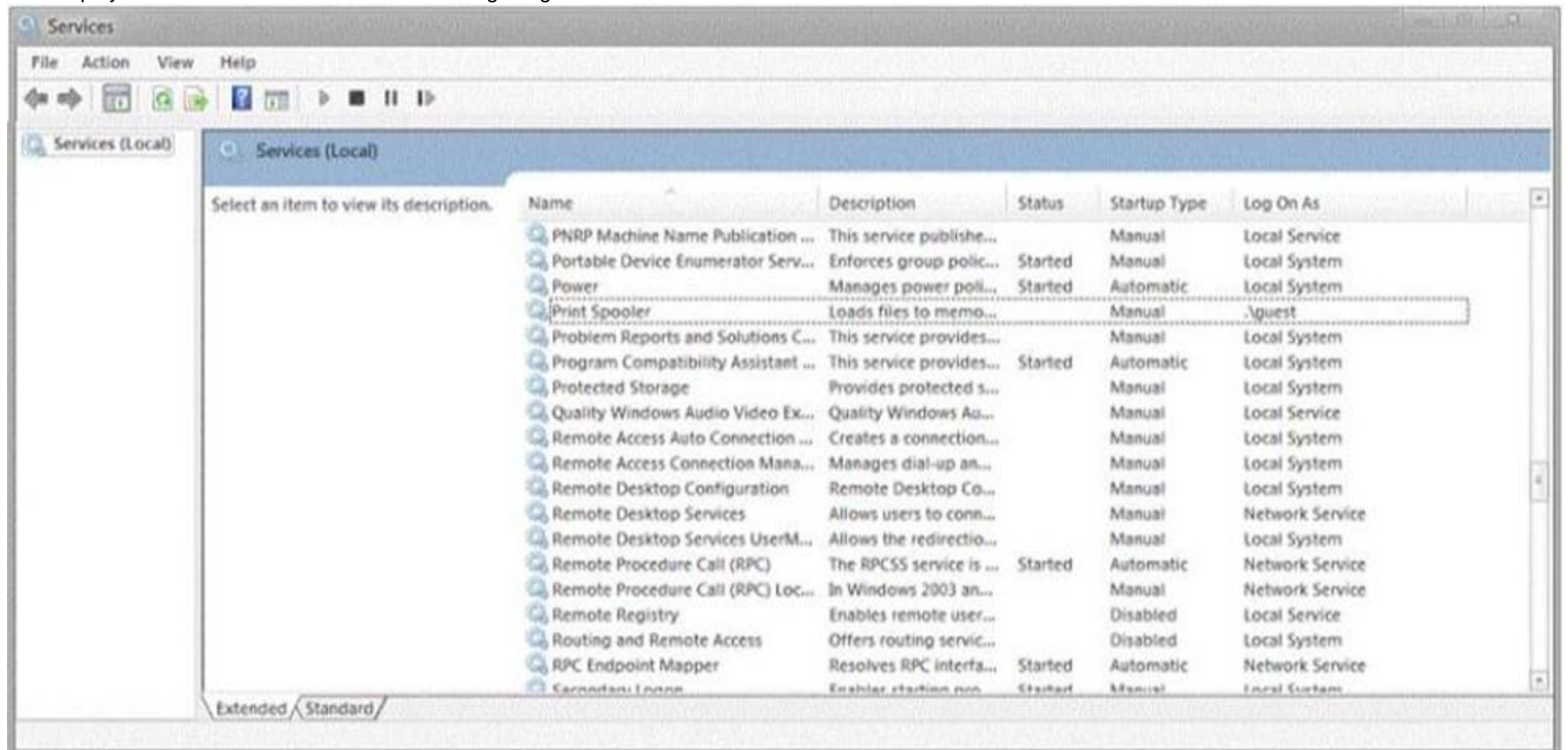
Answer: B

NEW QUESTION 56

- (Exam Topic 2)

During your summer job at Lucerne Publishing, an employee's computer is infected by a virus, which is then removed. However, this virus made changes to a service on the computer, and now the employee is unable to print or even see networked printers.

The employee's services are shown in the following image:



Use the drop-down menus to select the answer choice that completes each statement. Each correct selection is worth one point.

Answer Area

Set the Print Spooler service to a startup type of [answer choice]

Set the Print Spooler service to the [answer choice] level of privileges.

Answer Area

Set the Print Spooler service to a startup type of [answer choice]

Set the Print Spooler service to the [answer choice] level of privileges.

- A. Mastered
- B. Not Mastered

Answer: A

Explanation:

Answer Area

Set the Print Spooler service to a startup type of **[answer choice]**

Automatic.
Manual.
Disabled.

Set the Print Spooler service to the **[answer choice]** level of privileges.

Local System
Local Service
Network Service

NEW QUESTION 59

- (Exam Topic 2)

This question requires that you evaluate the underlined text to determine if it is correct. ReadyBoost increases system performance by using flash memory. Select the correct answer if the underlined text does not make the statement correct. Select "No change is needed" if the underlined text makes the statement correct.

- A. BitLocker
- B. The page file
- C. Disk Compression
- D. No change is needed

Answer: D

NEW QUESTION 64

- (Exam Topic 2)

For each of the following statements, select Yes if the statement is true. Otherwise, select No. Each correct selection is worth one point.

Answer Area

	Yes	No
Use MSINFO32.exe to obtain information about your computer system.	<input type="radio"/>	<input type="radio"/>
Use System Information to obtain details about a computer's hardware resources.	<input type="radio"/>	<input type="radio"/>
Use System Information to obtain details about a computer's software environment.	<input type="radio"/>	<input type="radio"/>

- A. Mastered
- B. Not Mastered

Answer: A

Explanation:

Answer Area

	Yes	No
Use MSINFO32.exe to obtain information about your computer system.	<input checked="" type="radio"/>	<input type="radio"/>
Use System Information to obtain details about a computer's hardware resources.	<input checked="" type="radio"/>	<input type="radio"/>
Use System Information to obtain details about a computer's software environment.	<input checked="" type="radio"/>	<input type="radio"/>

NEW QUESTION 67

- (Exam Topic 2)

This question requires that you evaluate the underlined text to determine if it is correct.

You can export information to a text file by using the msconfig command from a command prompt. Select the correct answer if the underlined text does not make the statement correct. Select "No change is needed" if the underlined text makes the statement correct.

- A. msinfo32
- B. perfmon
- C. taskmgr
- D. No change is needed

Answer: A

NEW QUESTION 72

- (Exam Topic 2)

Your brother asks you for help installing Windows 10 on this laptop. His laptop does not have a DVD drive on it. Which software should you use to create a bootable USB memory stick that can be used to install Windows?

- A. Media creation tool
- B. Windows Update
- C. Windows Easy transfer
- D. PCmover Express

Answer: A

NEW QUESTION 76

- (Exam Topic 2)

For each of the following statements, select Yes if the statement is true. Otherwise, select No. Each correct selection is worth one point.

Answer Area

	Yes	No
Users logged in to Windows 7 as administrators are given a standard user token in addition to their administrator token.	<input type="radio"/>	<input type="radio"/>
A standard user account is able to make changes to services or drivers that affect other users of the computer.	<input type="radio"/>	<input type="radio"/>
To make changes to how UAC operates, you must be logged in as an administrator.	<input type="radio"/>	<input type="radio"/>

- A. Mastered
- B. Not Mastered

Answer: A

Explanation:

Answer Area

	Yes	No
Users logged in to Windows 7 as administrators are given a standard user token in addition to their administrator token.	<input checked="" type="radio"/>	<input type="radio"/>
A standard user account is able to make changes to services or drivers that affect other users of the computer.	<input type="radio"/>	<input checked="" type="radio"/>
To make changes to how UAC operates, you must be logged in as an administrator.	<input checked="" type="radio"/>	<input type="radio"/>

NEW QUESTION 77

- (Exam Topic 2)

Instructions: For each of the following statements, select Yes if the statement is true. Otherwise, select No. NOTE: Each correct selection is worth one point.

Answer Area		Yes	No
Launch Action Center from the System Tray to troubleshoot the system problems.		<input type="radio"/>	<input type="radio"/>
Use the System option in the Control Panel System and Security area to defragment.		<input type="radio"/>	<input type="radio"/>
Use the Folder Options selection in the Control Panel Appearance and personalization area to have file extensions appear in Windows Explorer.		<input type="radio"/>	<input type="radio"/>

A. Mastered
B. Not Mastered

Answer: A

Explanation:

Answer Area		Yes	No
Launch Action Center from the System Tray to troubleshoot the system problems.		<input checked="" type="radio"/>	<input type="radio"/>
Use the System option in the Control Panel System and Security area to defragment.		<input checked="" type="radio"/>	<input type="radio"/>
Use the Folder Options selection in the Control Panel Appearance and personalization area to have file extensions appear in Windows Explorer.		<input checked="" type="radio"/>	<input type="radio"/>

NEW QUESTION 80

- (Exam Topic 2)

You are an IT intern for Contoso, Ltd., which has five regional offices, all networked separately. Glen works in the marketing department and has a Windows 7 Professional laptop computer. He has access to numerous network printers at each regional office. He also routinely brings his computer home and prints to his home printer. In total, he has 20 printers in his list of printers, and he is frustrated that he has to change printers for each location. What should you do to help Glen?

- A. Instruct Glen that he must set the default printer when he visits each location for the first time.
- B. Under Devices and Printers, select a printer
- C. Set the Manage default printers option to Change my default printer when I change networks.
- D. Upgrade Glen's laptop to Windows 7 Enterprise to enable location-aware printing.
- E. Under Devices and Printers, right-click the default printer and select the Set as default printer option.

Answer: B

NEW QUESTION 84

- (Exam Topic 2)

You are an intern at Lucerne Publishing. The company needs to use multiple versions of Microsoft Office on each machine in the editing department. Which virtualization strategy should the company use?

- A. RDP
- B. App-V
- C. Windows XP Mode
- D. VDI

Answer: B

NEW QUESTION 85

- (Exam Topic 2)

The Disk Cleanup tool:

- A. Allows free space by deleting temporary files from the hard disk drive.
- B. Rearranges the files on the hard disk to speed up performance.
- C. Moves files so that they are logically stored on the hard disk drive.
- D. Looks the surface of the disk for errors.

Answer: A

NEW QUESTION 87

- (Exam Topic 2)

You need to find out if your Windows XP computer is capable of running Windows 7. Which tool should you use?

- A. Windows Easy Transfer
- B. Windows Upgrade Advisor
- C. Application Compatibility Toolkit
- D. Windows 7 Compatibility Checker

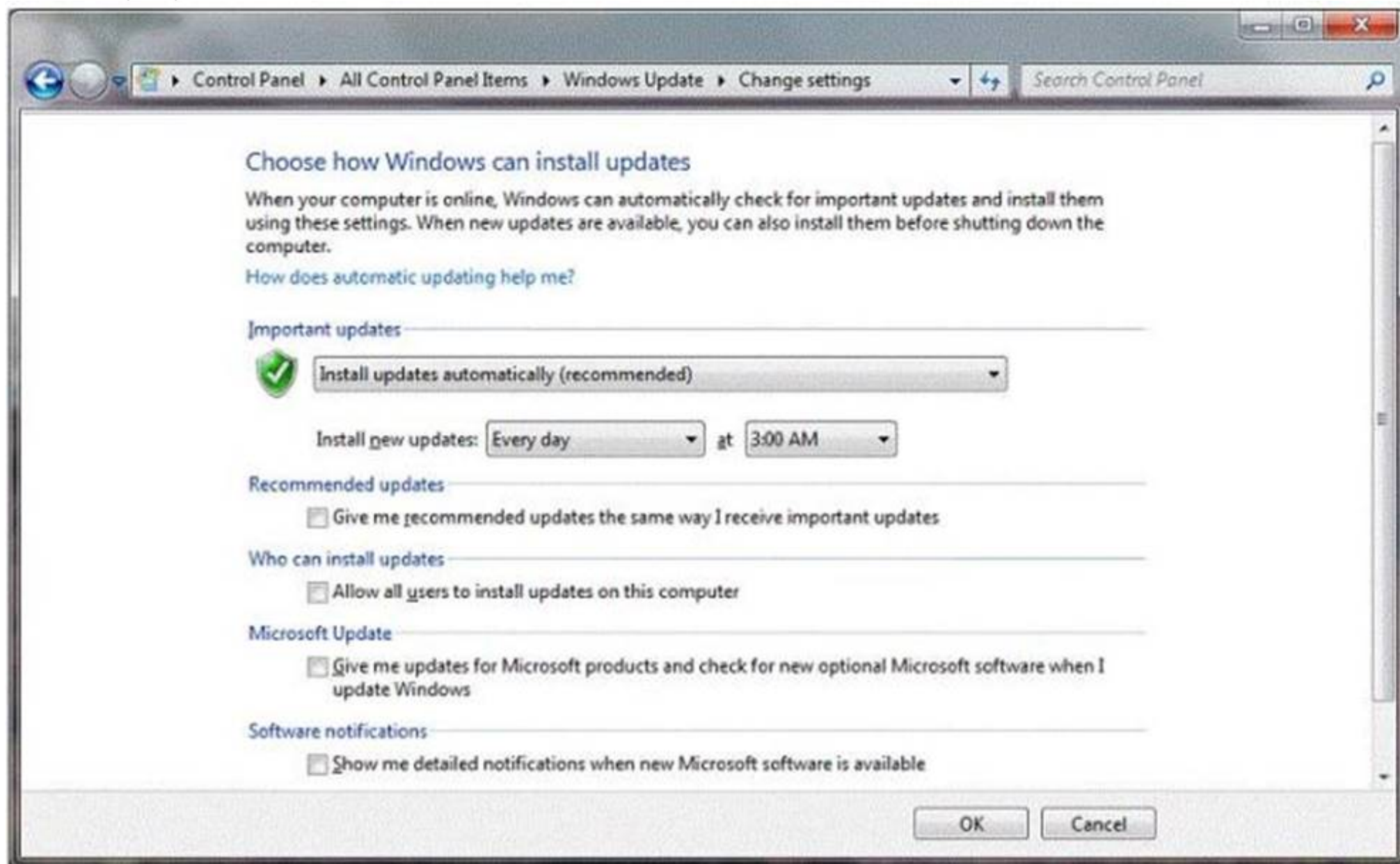
Answer: B

NEW QUESTION 91

- (Exam Topic 2)

You have an administrator account on your computer. You set up standard user accounts for each of your roommates.

You want to ensure that your computer automatically receives the latest updates, even when your roommates are using the computer. You review the information in the following image:



Use the drop-down menus to select the answer choice that completes each statement. Each correct selection is worth one point.

Answer Area

To allow updates to install when your roommates are using the computer, select the **[Answer choice]**

To allow one of your roommates to install Driver Updates, select the **[Answer choice]**

Answer Area

To allow updates to install when your roommates are using the computer, select the **[Answer choice]**

▼

"Allow all users to install updates on this computer" box.
"Give me recommended updates the same way I receive important updates" box.
"Give me updates for Microsoft products and check for new optional Microsoft Software when I update Windows" box.

To allow one of your roommates to install Driver Updates, select the **[Answer choice]**

▼

"Give me recommended updates the same way I receive important updates" box.
"Allow all users to install updates on this computer" box.
"Give me updates for Microsoft products and check for new optional Microsoft Software when I update Windows" box.

- A. Mastered
B. Not Mastered

Answer: A

Explanation:

Answer Area

To allow updates to install when your roommates are using the computer, select the **[Answer choice]**

▼

"Allow all users to install updates on this computer" box.
"Give me recommended updates the same way I receive important updates" box.
"Give me updates for Microsoft products and check for new optional Microsoft Software when I update Windows" box.

To allow one of your roommates to install Driver Updates, select the **[Answer choice]**

▼

"Give me recommended updates the same way I receive important updates" box.
"Allow all users to install updates on this computer" box.
"Give me updates for Microsoft products and check for new optional Microsoft Software when I update Windows" box.

NEW QUESTION 96

- (Exam Topic 2)

You have a computer with Windows Vista Home Premium installed.

Which two versions of Windows 7 are you able to upgrade to? (Choose two.)

- A. Home Basic
B. Home Premium
C. Professional
D. Ultimate

Answer: BD

NEW QUESTION 101

- (Exam Topic 2)

Which is the preferred file system for Windows computers?

- A. NTFS file system
B. FAT file system
C. FAT32 file system
D. CDFS

Answer: A

NEW QUESTION 103

- (Exam Topic 2)

For each of the following statements, select Yes if the statement is true. Otherwise, select No. Each correct selection is worth one point.

Answer Area	Yes	No
Installing Windows XP Mode requires a separate license for Windows XP.	<input type="radio"/>	<input type="radio"/>
Programs from an XP Mode installation display in both the Windows 7 list of programs and the XP Mode list of programs.	<input type="radio"/>	<input type="radio"/>
Windows XP Mode is available for Windows 7 Home.	<input type="radio"/>	<input type="radio"/>

- A. Mastered
B. Not Mastered

Answer: A

Explanation:

Answer Area	Yes	No
Installing Windows XP Mode requires a separate license for Windows XP.	<input type="radio"/>	<input checked="" type="radio"/>
Programs from an XP Mode installation display in both the Windows 7 list of programs and the XP Mode list of programs.	<input checked="" type="radio"/>	<input type="radio"/>
Windows XP Mode is available for Windows 7 Home.	<input type="radio"/>	<input checked="" type="radio"/>

NEW QUESTION 108

- (Exam Topic 2)

For each of the following statements, select Yes if the statement is true. Otherwise, select No. Each correct selection is worth one point.

Answer Area

	Yes	No
Restore deleted data files by using the System Restore Wizard.	<input type="radio"/>	<input type="radio"/>
Restore registry settings by using the System Restore Wizard.	<input type="radio"/>	<input type="radio"/>
Restore data files from a system image backup.	<input type="radio"/>	<input type="radio"/>

- A. Mastered
- B. Not Mastered

Answer: A

Explanation:

Answer Area

	Yes	No
Restore deleted data files by using the System Restore Wizard.	<input type="radio"/>	<input checked="" type="radio"/>
Restore registry settings by using the System Restore Wizard.	<input checked="" type="radio"/>	<input type="radio"/>
Restore data files from a system image backup.	<input checked="" type="radio"/>	<input type="radio"/>

NEW QUESTION 113

- (Exam Topic 2)

For each of the following statements, select Yes if the statement is true. Otherwise, select No. Each correct selection is worth one point.

Answer Area		
	Yes	No
In Windows 7 Home Premium Edition it is only possible to have one default printer.	<input type="radio"/>	<input type="radio"/>
It is possible to configure a network printer as a local printer without directly attaching the printer to the computer.	<input type="radio"/>	<input type="radio"/>
Printing to an XPS file allows the end user to modify the document from any computer by using an XPS application.	<input type="radio"/>	<input type="radio"/>

- A. Mastered
B. Not Mastered

Answer: A

Explanation:

Answer Area		
	Yes	No
In Windows 7 Home Premium Edition it is only possible to have one default printer.	<input checked="" type="radio"/>	<input type="radio"/>
It is possible to configure a network printer as a local printer without directly attaching the printer to the computer.	<input checked="" type="radio"/>	<input type="radio"/>
Printing to an XPS file allows the end user to modify the document from any computer by using an XPS application.	<input type="radio"/>	<input checked="" type="radio"/>

NEW QUESTION 117

- (Exam Topic 2)

For each of the following statements, select Yes if the statement is true. Otherwise, select No. Each correct selection is worth one point.

Answer Area	Yes	No
You can perform an in-place upgrade to Windows 7 from both Windows XP and Windows Vista.	<input type="radio"/>	<input type="radio"/>
It is possible to upgrade to a 32-bit version of Windows 7 only from a 32-bit previous version of Windows.	<input type="radio"/>	<input type="radio"/>
All upgrades to Windows 7 must be performed as clean installs.	<input type="radio"/>	<input type="radio"/>

- A. Mastered
B. Not Mastered

Answer: A

Explanation:

Answer Area

	Yes	No
You can perform an in-place upgrade to Windows 7 from both Windows XP and Windows Vista.	<input type="radio"/>	<input checked="" type="radio"/>
It is possible to upgrade to a 32-bit version of Windows 7 only from a 32-bit previous version of Windows.	<input checked="" type="radio"/>	<input type="radio"/>
All upgrades to Windows 7 must be performed as clean installs.	<input type="radio"/>	<input checked="" type="radio"/>

NEW QUESTION 122

- (Exam Topic 2)

You are an IT intern for Contoso, Ltd. You are responsible for deploying Windows 7 to a staff of more than 100 users.

The IT department plans to execute the upgrades by using the network. You start the deployment on each computer. You guide the installs through the initial steps.

Which deployment method are you using?

- A. MSI
- B. LTI
- C. WMI
- D. ZTI

Answer: B

NEW QUESTION 125

.....

About Exambible

Your Partner of IT Exam

Found in 1998

Exambible is a company specialized on providing high quality IT exam practice study materials, especially Cisco CCNA, CCDA, CCNP, CCIE, Checkpoint CCSE, CompTIA A+, Network+ certification practice exams and so on. We guarantee that the candidates will not only pass any IT exam at the first attempt but also get profound understanding about the certificates they have got. There are so many alike companies in this industry, however, Exambible has its unique advantages that other companies could not achieve.

Our Advances

* 99.9% Uptime

All examinations will be up to date.

* 24/7 Quality Support

We will provide service round the clock.

* 100% Pass Rate

Our guarantee that you will pass the exam.

* Unique Gurantee

If you do not pass the exam at the first time, we will not only arrange FULL REFUND for you, but also provide you another exam of your claim, ABSOLUTELY FREE!

NEW QUESTION 1

- (Exam Topic 1)

Every time you insert a music CD, you receive a dialog box that asks which action you want Windows to perform.

Which should you configure so that your personal computer automatically identifies an audio CD and starts playing music?

- A. The Autoplay settings
- B. The Ease of Access settings
- C. A desktop gadget
- D. The Personalization settings

Answer: A

NEW QUESTION 2

- (Exam Topic 1)

You need to configure a folder that allows everyone in your group to view and modify files. Which item in the Share With menu should you use?

- A. Specific People
- B. Nobody
- C. Homegroup (Read/Write)
- D. Homegroup (Read)

Answer: C

NEW QUESTION 3

- (Exam Topic 1)

Your computer is running slower than usual.

Where should you look to find out which applications are consuming the maximum number of resources?

- A. Administrative Tools
- B. Device Manager
- C. System Tray
- D. Task Manager
- E. Network and Sharing Center

Answer: D

NEW QUESTION 4

- (Exam Topic 1)

You attempt to update your video driver. Your screen stops responding. You need to be able to restore the previous video driver.

Which Windows feature should you use?

- A. Disk Defragmenter
- B. Disk Cleanup
- C. Check Disk (Chkdsk)
- D. Safe Mode

Answer: D

NEW QUESTION 5

- (Exam Topic 1)

Which feature should you use to install the most recent definitions for Windows Defender?

- A. Windows Update
- B. Sync Center
- C. Windows Installer
- D. Programs and Features

Answer: A

NEW QUESTION 6

- (Exam Topic 1)

Which feature ensures that your personal computer always has the latest patches and fixes for the operating system?

- A. Reliability and Performance Monitor
- B. Programs and Features
- C. System Configuration Utility
- D. Windows Update

Answer: D

NEW QUESTION 7

- (Exam Topic 1)

Which feature allows you to transfer information from your computer to your mobile phone?

- A. Windows Mobility Center

- B. Device Manager
- C. Sync Center
- D. Windows Easy Transfer

Answer: B

Explanation:

Ref:

<http://windows.microsoft.com/en-us/windows7/sync-music-pictures-contacts-and-calendars-with-a-mobile-devic>

NEW QUESTION 8

- (Exam Topic 1)

Which action will trigger a user account control (UAC) prompt in Windows?

- A. Accessing the Internet
- B. Changing the time zone
- C. Installing a new program
- D. Restarting Windows
- E. Changing settings in the Display Properties dialog box

Answer: C

NEW QUESTION 9

- (Exam Topic 1)

You need to upgrade your computer from the FAT file system to an NTFS file system. What should you do?

- A. Use the Backup and Restore tool.
- B. Clear the hard disk drive by using the Format tool.
- C. Use the Convert C:/fs:ntfs command.
- D. Run the Windows Easy Transfer tool.

Answer: C

NEW QUESTION 10

- (Exam Topic 1)

Where should you view the list of services on your Windows 7 computer?

- A. From the Windows Task Manager dialog box
- B. From the Windows Registry
- C. From the System Properties dialog box
- D. From the Windows Action Center

Answer: A

NEW QUESTION 10

- (Exam Topic 1)

What should you do to secure and protect the connection to a Bluetooth device?

- A. Turn off make device discoverable after connecting your devices.
- B. Reset the Bluetooth device to factory default settings after making a connection.
- C. Turn off the Bluetooth device when not in use.
- D. Use unique pairing codes when connecting your devices.

Answer: D

NEW QUESTION 14

- (Exam Topic 1)

Which file system is designed for transfer of large files between a personal computer and flash devices?

- A. FAT16 file system
- B. FAT32 file system
- C. exFAT file system
- D. NTFS file system

Answer: C

NEW QUESTION 15

- (Exam Topic 1)

Which Windows feature allows you to request that someone else control your computer from their computer?

- A. Remote Assistance
- B. Action Center
- C. Sync Center
- D. Connect Now

Answer: A

NEW QUESTION 17

- (Exam Topic 1)

Which Windows feature allows secure printing over the Internet?

- A. Secure Transfer Protocol (STP)
- B. Internet Printing Protocol (IPP) by using HTTPS
- C. Voce over Internet Protocol (VoIP)
- D. Web2Print

Answer: B

NEW QUESTION 22

- (Exam Topic 1)

You plan to upgrade your computer to Windows 7.

Which tool should you use to find out whether your current applications will run on Windows 7?

- A. Application Compatibility Toolkit
- B. Windows Anytime Upgrade
- C. Windows Update
- D. Windows Service Pack

Answer: A

NEW QUESTION 26

- (Exam Topic 1)

Which feature allows you to run applications hosted on network file servers or web servers?

- A. Windows Virtual PC
- B. Remote Desktop Connection
- C. Windows Installer
- D. Application Virtualization Client

Answer: D

NEW QUESTION 28

- (Exam Topic 1)

Which Windows feature should you use to find patches for Internet Explorer?

- A. Sync Center
- B. System Information
- C. Internet Properties
- D. Windows Update

Answer: D

NEW QUESTION 30

- (Exam Topic 1)

Which feature should you use to restrict certain actions only to an administrator account on a Windows 7 computer?

- A. Windows Experience Index
- B. User Account Control
- C. BitLocker
- D. Computer Management

Answer: B

NEW QUESTION 32

- (Exam Topic 1)

You need to manage service dependencies on your Windows 7 computer. Which feature should you use?

- A. Action Center
- B. Event Viewer
- C. Task Scheduler
- D. Computer Management Console

Answer: D

NEW QUESTION 35

- (Exam Topic 1)

You need to install a new webcam on your personal computer.

What should you do? (To answer, move the four appropriate actions from the list of actions to the answer area and arrange them in the correct order.)

Configure the COM ports.		
Configure the Display properties.		
Plug the webcam into a USB port.)	(
Run the setup program provided by the manufacturer.)	(
Use Windows Update to configure the updated driver.		
Allow Windows to locate and add the new hardware.		

- A. Mastered
B. Not Mastered

Answer: A

Explanation:

Box 1: Plug the webcam into a USB port.

Box 2: Allow Windows to locate and add the new hardware Box 3: Use Windows Update to configure the update driver. Box 4: Run the setup program provided by the manufacturer. Note:

* When you connect an external webcam to your computer for the first time, Windows will recognize it and automatically install a driver for it.

* After installation is complete, check the information that came with your webcam to see if you need to install any additional software.

NEW QUESTION 39

- (Exam Topic 1)

Which Windows feature allows you to manually control another Windows computer?

- A. Remote Control Monitor
B. Remote Desktop Connection
C. Remote Power Management
D. Remote Procedure Call

Answer: B

NEW QUESTION 40

- (Exam Topic 2)

You need to find out whether a computer is running a 32-bit or 64-bit version of the Windows operating system. What should you do?

- A. From the Start menu, type 64-bit in the Search programs and files field.
B. From Control Panel, select System.
C. Open Device Manager and select Processors.
D. From the Windows Help and Support feature, type 64-bit system in the Search field.

Answer: B

NEW QUESTION 41

- (Exam Topic 2)

For each of the following statements, select Yes if the statement is true. Otherwise, select No. Each correct selection is worth one point.

Answer Area

	Yes	No
Users logged in to Windows 7 as administrators are given a standard user token in addition to their administrator token.	<input type="radio"/>	<input type="radio"/>
A standard user account is able to make changes to services or drivers that affect other users of the computer.	<input type="radio"/>	<input type="radio"/>
To make changes to how UAC operates, you must be logged in as an administrator.	<input type="radio"/>	<input type="radio"/>

- A. Mastered
- B. Not Mastered

Answer: A

Explanation:

Answer Area

	Yes	No
Users logged in to Windows 7 as administrators are given a standard user token in addition to their administrator token.	<input checked="" type="radio"/>	<input type="radio"/>
A standard user account is able to make changes to services or drivers that affect other users of the computer.	<input type="radio"/>	<input checked="" type="radio"/>
To make changes to how UAC operates, you must be logged in as an administrator.	<input checked="" type="radio"/>	<input type="radio"/>

NEW QUESTION 42

- (Exam Topic 2)

This question requires that you evaluate the underlined text to determine if it is correct.

To actively scan for spyware and viruses, you should ensure Action Center is installed and running. Select the correct answer if the underlined text does not make the statement correct. Select "No change is needed" if the underlined text makes the statement correct.

- A. Windows Defender
- B. The Malicious Software Removal Tool
- C. Microsoft Security Essentials
- D. No change is needed.

Answer: C

NEW QUESTION 44

- (Exam Topic 2)

How can you create a connection to a network share without having to type its network address each time you need to connect?

- A. Add the computer to the shared workgroup.
- B. Add a Network Location.
- C. Map a network drive.
- D. Create a HomeGroup.

Answer: C

NEW QUESTION 48

- (Exam Topic 2)

Which task can be accomplished by a standard user, regardless of the system security settings?

- A. Installing a program
- B. Changing an account name or type
- C. Changing their own password
- D. Adding a driver for new hardware

Answer: D

NEW QUESTION 52

- (Exam Topic 2)

Windows presents a UAC prompt when you configure:

- A. Battery power options
- B. The desktop background
- C. Automatic updates
- D. Accessibility options

Answer: C

NEW QUESTION 55

- (Exam Topic 2)

You want to share a document with everyone on your school network. Which Windows 7 feature should you use?

- A. Map Network Drive
- B. Public Folder
- C. Computer Management Console
- D. Documents Library

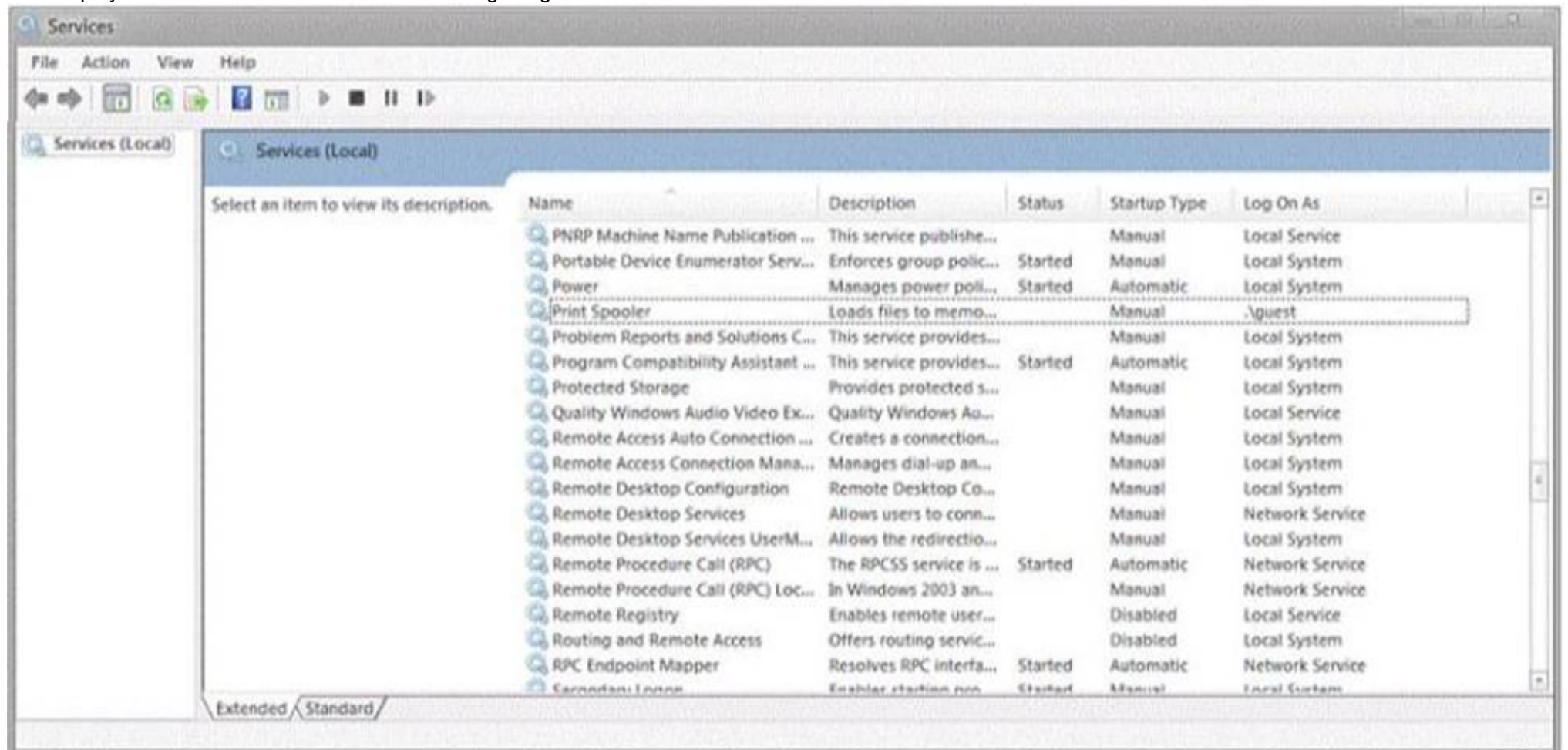
Answer: B

NEW QUESTION 56

- (Exam Topic 2)

During your summer job at Lucerne Publishing, an employee's computer is infected by a virus, which is then removed. However, this virus made changes to a service on the computer, and now the employee is unable to print or even see networked printers.

The employee's services are shown in the following image:



Use the drop-down menus to select the answer choice that completes each statement. Each correct selection is worth one point.

Answer Area

Set the Print Spooler service to a startup type of [answer choice]

Set the Print Spooler service to the [answer choice] level of privileges.

Answer Area

Set the Print Spooler service to a startup type of [answer choice]

Set the Print Spooler service to the [answer choice] level of privileges.

- A. Mastered
- B. Not Mastered

Answer: A

Explanation:

Answer Area

Set the Print Spooler service to a startup type of **[answer choice]**

Automatic.
Manual.
Disabled.

Set the Print Spooler service to the **[answer choice]** level of privileges.

Local System
Local Service
Network Service

NEW QUESTION 59

- (Exam Topic 2)

This question requires that you evaluate the underlined text to determine if it is correct. ReadyBoost increases system performance by using flash memory. Select the correct answer if the underlined text does not make the statement correct. Select "No change is needed" if the underlined text makes the statement correct.

- A. BitLocker
- B. The page file
- C. Disk Compression
- D. No change is needed

Answer: D

NEW QUESTION 64

- (Exam Topic 2)

For each of the following statements, select Yes if the statement is true. Otherwise, select No. Each correct selection is worth one point.

Answer Area

	Yes	No
Use MSINFO32.exe to obtain information about your computer system.	<input type="radio"/>	<input type="radio"/>
Use System Information to obtain details about a computer's hardware resources.	<input type="radio"/>	<input type="radio"/>
Use System Information to obtain details about a computer's software environment.	<input type="radio"/>	<input type="radio"/>

- A. Mastered
- B. Not Mastered

Answer: A

Explanation:

Answer Area

	Yes	No
Use MSINFO32.exe to obtain information about your computer system.	<input checked="" type="radio"/>	<input type="radio"/>
Use System Information to obtain details about a computer's hardware resources.	<input checked="" type="radio"/>	<input type="radio"/>
Use System Information to obtain details about a computer's software environment.	<input checked="" type="radio"/>	<input type="radio"/>

NEW QUESTION 67

- (Exam Topic 2)

This question requires that you evaluate the underlined text to determine if it is correct.

You can export information to a text file by using the msconfig command from a command prompt. Select the correct answer if the underlined text does not make the statement correct. Select "No change is needed" if the underlined text makes the statement correct.

- A. msinfo32
- B. perfmon
- C. taskmgr
- D. No change is needed

Answer: A

NEW QUESTION 72

- (Exam Topic 2)

Your brother asks you for help installing Windows 10 on this laptop. His laptop does not have a DVD drive on it. Which software should you use to create a bootable USB memory stick that can be used to install Windows?

- A. Media creation tool
- B. Windows Update
- C. Windows Easy transfer
- D. PCmover Express

Answer: A

NEW QUESTION 76

- (Exam Topic 2)

For each of the following statements, select Yes if the statement is true. Otherwise, select No. Each correct selection is worth one point.

Answer Area

	Yes	No
Users logged in to Windows 7 as administrators are given a standard user token in addition to their administrator token.	<input type="radio"/>	<input type="radio"/>
A standard user account is able to make changes to services or drivers that affect other users of the computer.	<input type="radio"/>	<input type="radio"/>
To make changes to how UAC operates, you must be logged in as an administrator.	<input type="radio"/>	<input type="radio"/>

- A. Mastered
- B. Not Mastered

Answer: A

Explanation:

Answer Area

	Yes	No
Users logged in to Windows 7 as administrators are given a standard user token in addition to their administrator token.	<input checked="" type="radio"/>	<input type="radio"/>
A standard user account is able to make changes to services or drivers that affect other users of the computer.	<input type="radio"/>	<input checked="" type="radio"/>
To make changes to how UAC operates, you must be logged in as an administrator.	<input checked="" type="radio"/>	<input type="radio"/>

NEW QUESTION 77

- (Exam Topic 2)

Instructions: For each of the following statements, select Yes if the statement is true. Otherwise, select No. NOTE: Each correct selection is worth one point.

Answer Area			Yes	No
Launch Action Center from the System Tray to troubleshoot the system problems.			<input type="radio"/>	<input type="radio"/>
Use the System option in the Control Panel System and Security area to defragment.			<input type="radio"/>	<input type="radio"/>
Use the Folder Options selection in the Control Panel Appearance and personalization area to have file extensions appear in Windows Explorer.			<input type="radio"/>	<input type="radio"/>

A. Mastered
B. Not Mastered

Answer: A

Explanation:

Answer Area			Yes	No
Launch Action Center from the System Tray to troubleshoot the system problems.			<input checked="" type="radio"/>	<input type="radio"/>
Use the System option in the Control Panel System and Security area to defragment.			<input checked="" type="radio"/>	<input type="radio"/>
Use the Folder Options selection in the Control Panel Appearance and personalization area to have file extensions appear in Windows Explorer.			<input checked="" type="radio"/>	<input type="radio"/>

NEW QUESTION 80

- (Exam Topic 2)

You are an IT intern for Contoso, Ltd., which has five regional offices, all networked separately. Glen works in the marketing department and has a Windows 7 Professional laptop computer. He has access to numerous network printers at each regional office. He also routinely brings his computer home and prints to his home printer. In total, he has 20 printers in his list of printers, and he is frustrated that he has to change printers for each location. What should you do to help Glen?

- A. Instruct Glen that he must set the default printer when he visits each location for the first time.
- B. Under Devices and Printers, select a printer
- C. Set the Manage default printers option to Change my default printer when I change networks.
- D. Upgrade Glen's laptop to Windows 7 Enterprise to enable location-aware printing.
- E. Under Devices and Printers, right-click the default printer and select the Set as default printer option.

Answer: B

NEW QUESTION 84

- (Exam Topic 2)

You are an intern at Lucerne Publishing. The company needs to use multiple versions of Microsoft Office on each machine in the editing department. Which virtualization strategy should the company use?

- A. RDP
- B. App-V
- C. Windows XP Mode
- D. VDI

Answer: B

NEW QUESTION 85

- (Exam Topic 2)

The Disk Cleanup tool:

- A. Allows free space by deleting temporary files from the hard disk drive.
- B. Rearranges the files on the hard disk to speed up performance.
- C. Moves files so that they are logically stored on the hard disk drive.
- D. Looks the surface of the disk for errors.

Answer: A

NEW QUESTION 87

- (Exam Topic 2)

You need to find out if your Windows XP computer is capable of running Windows 7. Which tool should you use?

- A. Windows Easy Transfer
- B. Windows Upgrade Advisor
- C. Application Compatibility Toolkit
- D. Windows 7 Compatibility Checker

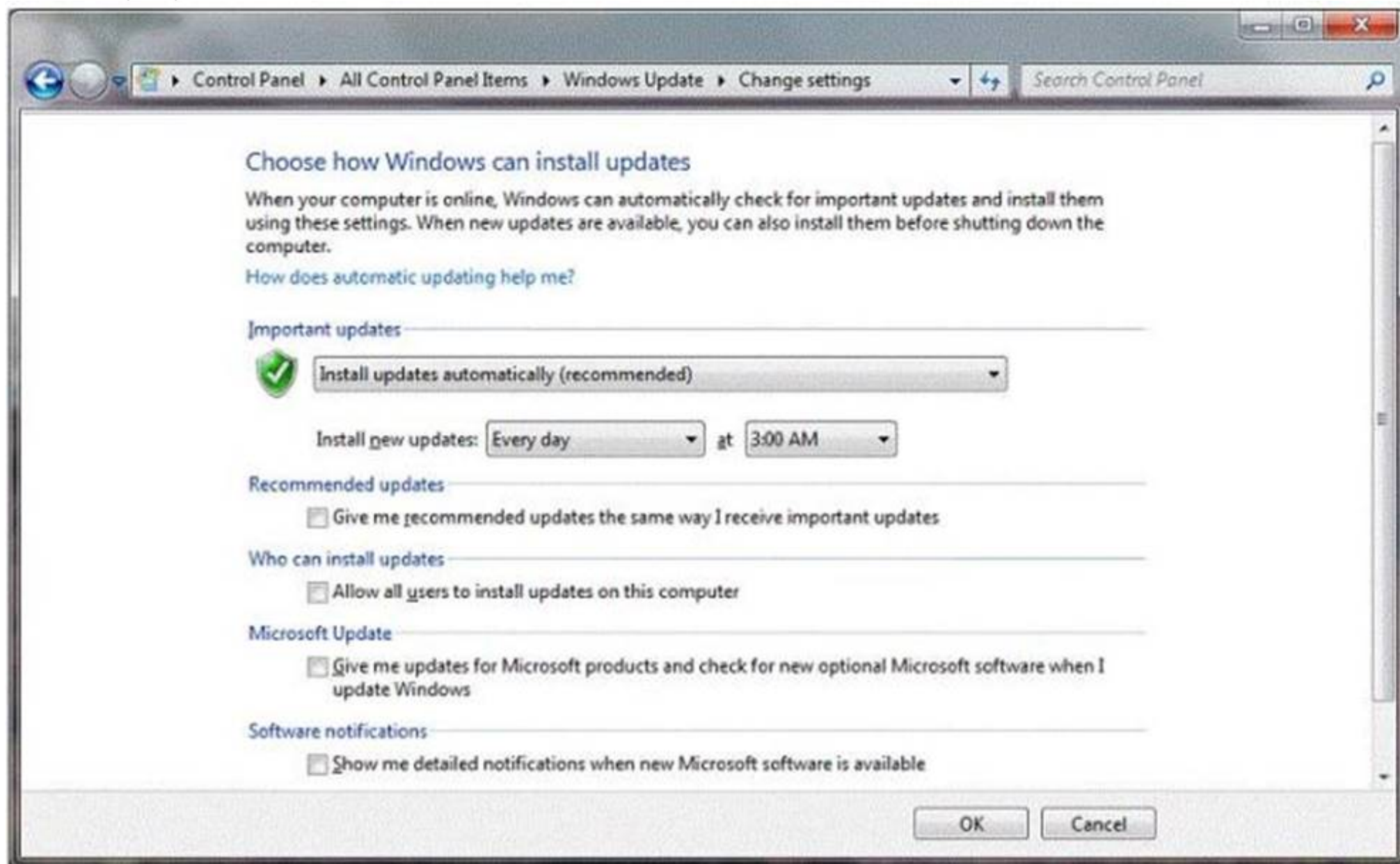
Answer: B

NEW QUESTION 91

- (Exam Topic 2)

You have an administrator account on your computer. You set up standard user accounts for each of your roommates.

You want to ensure that your computer automatically receives the latest updates, even when your roommates are using the computer. You review the information in the following image:



Use the drop-down menus to select the answer choice that completes each statement. Each correct selection is worth one point.

Answer Area

To allow updates to install when your roommates are using the computer, select the [Answer choice]

To allow one of your roommates to install Driver Updates, select the [Answer choice]

Answer Area

To allow updates to install when your roommates are using the computer, select the **[Answer choice]**

▼

"Allow all users to install updates on this computer" box.
"Give me recommended updates the same way I receive important updates" box.
"Give me updates for Microsoft products and check for new optional Microsoft Software when I update Windows" box.

To allow one of your roommates to install Driver Updates, select the **[Answer choice]**

▼

"Give me recommended updates the same way I receive important updates" box.
"Allow all users to install updates on this computer" box.
"Give me updates for Microsoft products and check for new optional Microsoft Software when I update Windows" box.

- A. Mastered
B. Not Mastered

Answer: A

Explanation:

Answer Area

To allow updates to install when your roommates are using the computer, select the **[Answer choice]**

▼

"Allow all users to install updates on this computer" box.
"Give me recommended updates the same way I receive important updates" box.
"Give me updates for Microsoft products and check for new optional Microsoft Software when I update Windows" box.

To allow one of your roommates to install Driver Updates, select the **[Answer choice]**

▼

"Give me recommended updates the same way I receive important updates" box.
"Allow all users to install updates on this computer" box.
"Give me updates for Microsoft products and check for new optional Microsoft Software when I update Windows" box.

NEW QUESTION 96

- (Exam Topic 2)

You have a computer with Windows Vista Home Premium installed.

Which two versions of Windows 7 are you able to upgrade to? (Choose two.)

- A. Home Basic
B. Home Premium
C. Professional
D. Ultimate

Answer: BD

NEW QUESTION 101

- (Exam Topic 2)

Which is the preferred file system for Windows computers?

- A. NTFS file system
B. FAT file system
C. FAT32 file system
D. CDFS

Answer: A

NEW QUESTION 103

- (Exam Topic 2)

For each of the following statements, select Yes if the statement is true. Otherwise, select No. Each correct selection is worth one point.

Answer Area	Yes	No
Installing Windows XP Mode requires a separate license for Windows XP.	<input type="radio"/>	<input type="radio"/>
Programs from an XP Mode installation display in both the Windows 7 list of programs and the XP Mode list of programs.	<input type="radio"/>	<input type="radio"/>
Windows XP Mode is available for Windows 7 Home.	<input type="radio"/>	<input type="radio"/>

- A. Mastered
B. Not Mastered

Answer: A

Explanation:

Answer Area	Yes	No
Installing Windows XP Mode requires a separate license for Windows XP.	<input type="radio"/>	<input checked="" type="radio"/>
Programs from an XP Mode installation display in both the Windows 7 list of programs and the XP Mode list of programs.	<input checked="" type="radio"/>	<input type="radio"/>
Windows XP Mode is available for Windows 7 Home.	<input type="radio"/>	<input checked="" type="radio"/>

NEW QUESTION 108

- (Exam Topic 2)

For each of the following statements, select Yes if the statement is true. Otherwise, select No. Each correct selection is worth one point.

Answer Area

	Yes	No
Restore deleted data files by using the System Restore Wizard.	<input type="radio"/>	<input type="radio"/>
Restore registry settings by using the System Restore Wizard.	<input type="radio"/>	<input type="radio"/>
Restore data files from a system image backup.	<input type="radio"/>	<input type="radio"/>

- A. Mastered
- B. Not Mastered

Answer: A

Explanation:

Answer Area

	Yes	No
Restore deleted data files by using the System Restore Wizard.	<input type="radio"/>	<input checked="" type="radio"/>
Restore registry settings by using the System Restore Wizard.	<input checked="" type="radio"/>	<input type="radio"/>
Restore data files from a system image backup.	<input checked="" type="radio"/>	<input type="radio"/>

NEW QUESTION 113

- (Exam Topic 2)

For each of the following statements, select Yes if the statement is true. Otherwise, select No. Each correct selection is worth one point.

Answer Area

	Yes	No
In Windows 7 Home Premium Edition it is only possible to have one default printer.	<input type="radio"/>	<input type="radio"/>
It is possible to configure a network printer as a local printer without directly attaching the printer to the computer.	<input type="radio"/>	<input type="radio"/>
Printing to an XPS file allows the end user to modify the document from any computer by using an XPS application.	<input type="radio"/>	<input type="radio"/>

- A. Mastered
- B. Not Mastered

Answer: A

Explanation:

Answer Area

	Yes	No
In Windows 7 Home Premium Edition it is only possible to have one default printer.	<input checked="" type="radio"/>	<input type="radio"/>
It is possible to configure a network printer as a local printer without directly attaching the printer to the computer.	<input checked="" type="radio"/>	<input type="radio"/>
Printing to an XPS file allows the end user to modify the document from any computer by using an XPS application.	<input type="radio"/>	<input checked="" type="radio"/>

NEW QUESTION 117

- (Exam Topic 2)

For each of the following statements, select Yes if the statement is true. Otherwise, select No. Each correct selection is worth one point.

Answer Area

	Yes	No
You can perform an in-place upgrade to Windows 7 from both Windows XP and Windows Vista.	<input type="radio"/>	<input type="radio"/>
It is possible to upgrade to a 32-bit version of Windows 7 only from a 32-bit previous version of Windows.	<input type="radio"/>	<input type="radio"/>
All upgrades to Windows 7 must be performed as clean installs.	<input type="radio"/>	<input type="radio"/>

- A. Mastered
- B. Not Mastered

Answer: A

Explanation:

Answer Area

Yes

No

You can perform an in-place upgrade to Windows 7 from both Windows XP and Windows Vista.

☐

It is possible to upgrade to a 32-bit version of Windows 7 only from a 32-bit previous version of Windows.

☐

All upgrades to Windows 7 must be performed as clean installs.

☐

NEW QUESTION 122

- (Exam Topic 2)

You are an IT intern for Contoso, Ltd. You are responsible for deploying Windows 7 to a staff of more than 100 users.

The IT department plans to execute the upgrades by using the network. You start the deployment on each computer. You guide the installs through the initial steps.

Which deployment method are you using?

- A. MSI
- B. LTI
- C. WMI
- D. ZTI

Answer: B

NEW QUESTION 125

.....

Relate Links

100% Pass Your 98-349 Exam with ExamBible Prep Materials

<https://www.exambible.com/98-349-exam/>

Contact us

We are proud of our high-quality customer service, which serves you around the clock 24/7.

Viste - <https://www.exambible.com/>