

Exam Questions 1Z0-071

Oracle Database 12c SQL

<https://www.2passeasy.com/dumps/1Z0-071/>



NEW QUESTION 1

In which normal form is a table, if it has no multi-valued attributes and no partial dependencies?

- A. second normal form
- B. first normal form
- C. third normal form
- D. fourth normal form

Answer: A

Explanation:

References:

<https://blog.udemy.com/database-normal-forms/>

NEW QUESTION 2

You must write a query that prompts users for column names and conditions every time it is executed. (Choose the best answer.)
The user must be prompted only once for the table name. Which statement achieves those objectives?

- A. `SELECT &col1, '&col2'FROM &tableWHERE &&condition = '&cond';`
- B. `SELECT &col1, &col2 FROM "&table"WHERE &condition =&cond;`
- C. `SELECT &col1, &col2 FROM &&tableWHERE &condition = &cond;`
- D. `SELECT &col1, &col2 FROM &&tableWHERE &condition = &&cond`

Answer: C

NEW QUESTION 3

You issue this command which succeeds: `SQL> DROP TABLE products;`
Which three statements are true?

- A. All existing views and synonyms that refer to the table are invalidated but retained.
- B. Any uncommitted transaction in the session is committed.
- C. Table data and the table structure are deleted.
- D. All the table's indexes if any exist, are invalidated but retained.
- E. Table data is deleted but the table structure is retained.

Answer: BCD

NEW QUESTION 4

Which three statements are true regarding subqueries?

- A. Multiple columns or expressions can be compared between the main query and subquery.
- B. Subqueries can contain ORDER BY but not the GROUP BY clause.
- C. Main query and subquery can get data from different tables.
- D. Subqueries can contain GROUP BY and ORDER BY clauses.
- E. Main query and subquery must get data from the same tables.
- F. Only one column or expression can be compared between the main query and subquery.

Answer: ACD

Explanation:

References:

<http://docs.oracle.com/javadb/10.6.2.1/ref/rrefsqlj13658.html>

NEW QUESTION 5

You are designing the structure of a table in which two columns have the specifications:

COMPONENT_ID – must be able to contain a maximum of 12 alphanumeric characters and uniquely identify the row

EXECUTION_DATETIME – contains Century, Year, Month, Day, Hour, Minute, Second to the maximum precision and is used for calculations and comparisons between components.

Which two options define the data types that satisfy these requirements most efficiently?

- A. The EXECUTION_DATETIME must be of INTERVAL DAY TO SECOND data type.
- B. The EXECUTION_DATETIME must be of TIMESTAMP data type.
- C. The EXECUTION_DATETIME must be of DATE data type.
- D. The COMPONENT_ID must be of ROWID data type.
- E. The COMPONENT_ID must be of VARCHAR2 data type.
- F. The COMPONENT_ID column must be of CHAR data type.

Answer: CF

NEW QUESTION 6

View the exhibit and examine the structure of the CUSTOMERS table.

Table CUSTOMERS		
Name	Null?	Type
CUST_ID	NOT NULL	NUMBER
CUST_FIRST_NAME	NOT NULL	VARCHAR2 (20)
CUST_LAST_NAME	NOT NULL	VARCHAR2 (40)
CUST_GENDER	NOT NULL	CHAR (1)
CUST_YEAR_OF_BIRTH	NOT NULL	NUMBER (4)
CUST_MARITAL_STATUS		VARCHAR2 (20)
CUST_STREET_ADDRESS	NOT NULL	VARCHAR2 (40)
CUST_POSTAL_CODE	NOT NULL	VARCHAR2 (10)
CUST_CITY	NOT NULL	VARCHAR2 (30)
CUST_STATE_PROVINCE	NOT NULL	VARCHAR2 (40)
COUNTRY_ID	NOT NULL	NUMBER
CUST_INCOME_LEVEL		VARCHAR2 (30)
CUST_CREDIT_LIMIT		NUMBER
CUST_EMAIL		VARCHAR2 (30)

Which two tasks would require subqueries or joins to be executed in a single statement?

- A. finding the number of customers, in each city, whose credit limit is more than the average credit limit of all the customers
- B. finding the average credit limit of male customers residing in 'Tokyo' or 'Sydney'
- C. listing of customers who do not have a credit limit and were born before 1980
- D. finding the number of customers, in each city, who's marital status is 'married'.
- E. listing of those customers, whose credit limit is the same as the credit limit of customers residing in the city 'Tokyo'.

Answer: AE

NEW QUESTION 7

Which statement is true regarding the UNION operator?

- A. By default, the output is not sorted.
- B. Null values are not ignored during duplicate checking.
- C. Names of all columns must be identical across all select statements.
- D. The number of columns selected in all select statements need not be the same.

Answer: B

NEW QUESTION 8

Which two tasks can be performed by using Oracle SQL statements?

- A. changing the password for an existing database user
- B. connecting to a database instance
- C. querying data from tables across databases
- D. starting up a database instance
- E. executing operating system (OS) commands in a session

Answer: AC

Explanation:

References:

<http://www.techonthenet.com/oracle/password.php>

https://docs.oracle.com/cd/B28359_01/server.111/b28324/tdpii_distdbs.htm

NEW QUESTION 9

Examine the create table statements for the stores and sales tables.

SQL> CREATE TABLE stores(store_id NUMBER(4) CONSTRAINT store_id_pk PRIMARY KEY, store_name VARCHAR2(12), store_address VARCHAR2(20), start_date DATE);

SQL> CREATE TABLE sales(sales_id NUMBER(4) CONSTRAINT sales_id_pk PRIMARY KEY, item_id NUMBER(4), quantity NUMBER(10), sales_date DATE, store_id NUMBER(4), CONSTRAINT store_id_fk FOREIGN KEY(store_id) REFERENCES stores(store_id));

You executed the following statement: SQL> DELETE from stores

WHERE store_id=900;

The statement fails due to the integrity constraint error:

ORA-02292: integrity constraint (HR.STORE_ID_FK) violated

Which three options ensure that the statement will execute successfully?

- A. Disable the primary key in the STORES table.
- B. Use CASCADE keyword with DELETE statement.
- C. DELETE the rows with STORE_ID = 900 from the SALES table and then delete rows from STORES table.
- D. Disable the FOREIGN KEY in SALES table and then delete the rows.
- E. Create the foreign key in the SALES table on SALES_ID column with on DELETE CASCADE option.

Answer: CDE

NEW QUESTION 10

Which three arithmetic operations can be performed on a column by using a SQL function that is built into Oracle database? (Choose three.)

- A. Finding the lowest value
- B. Finding the quotient
- C. Raising to a power
- D. Subtraction
- E. Addition

Answer: ACE

NEW QUESTION 10

On your Oracle 12c database, you invoked SQL *Loader to load data into the EMPLOYEES table in the HR schema by issuing the following command:

```
$> sqlldr hr/hr@pdb table=employees
```

Which two statements are true regarding the command?

- A. It succeeds with default settings if the EMPLOYEES table belonging to HR is already defined in the database.
- B. It fails because no SQL *Loader data file location is specified.
- C. It fails if the HR user does not have the CREATE ANY DIRECTORY privilege.
- D. It fails because no SQL *Loader control file location is specified.

Answer: AC

NEW QUESTION 11

Which two statements are true regarding savepoints? (Choose two.)

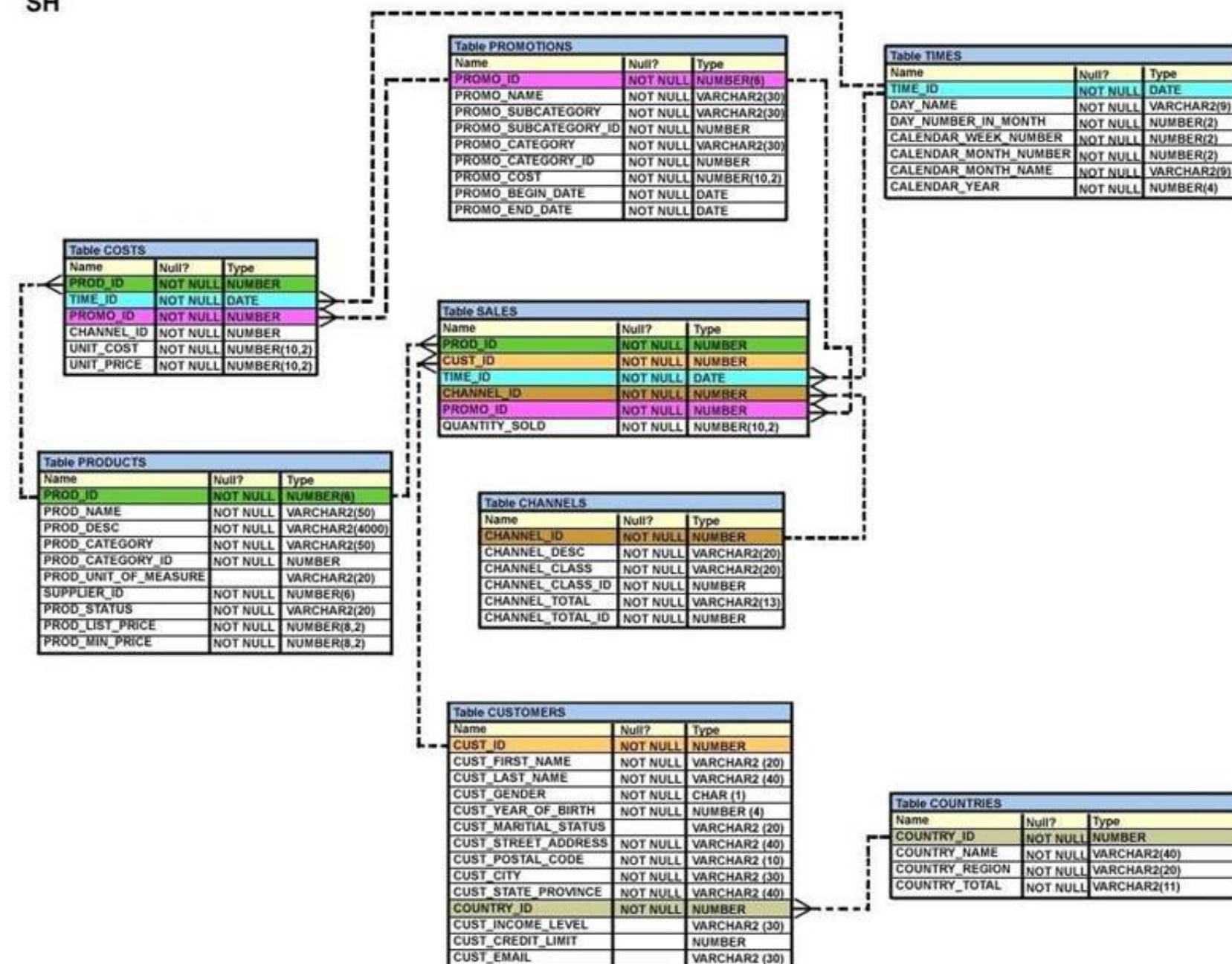
- A. Savepoints may be used to ROLLBACK.
- B. Savepoints can be used for only DML statements.
- C. Savepoints are effective only for COMMIT.
- D. Savepoints are effective for both COMMIT and ROLLBACK.
- E. Savepoints can be used for both DML and DDL statements.

Answer: AB

NEW QUESTION 14

View the Exhibit and examine, the description for the SALES and CHANNELS tables. (Choose the best answer.)

SH



You issued this SQL statement:

```
INSERT INTO SALES VALUES (23, 2300, SYSDATE, (SELECT CAHNNEL_ID
FROM CHANNELS
WHERE CHANNEL_DESC='DIRECT SALES'), 12, 1, 500);
```

Which statement is true regarding the result?

- A. The statement will fail because the sub-query in the VALUES clause is not enclosed within single quotation marks.
- B. The statement will fail because a subquery cannot be used in a VALUES clause.
- C. The statement will execute and a new row will be inserted in the SALES table.
- D. The statement will fail because the VALUES clause is not required with the subquery.

Answer: C

NEW QUESTION 15

Which two statements are true regarding the EXISTS operator used in the correlated subqueries? (Choose two.)

- A. The outer query stops evaluating the result set of the inner query when the first value is found.
- B. It is used to test whether the values retrieved by the inner query exist in the result of the outer query.
- C. It is used to test whether the values retrieved by the outer query exist in the result set of the inner query.
- D. The outer query continues evaluating the result set of the inner query until all the values in the result set are processed.

Answer: AC

Explanation:

References:

<http://www.techonthenet.com/oracle/exists.php>

NEW QUESTION 18

Examine the business rule:

Each student can work on multiple projects and each project can have multiple students.

You need to design an Entity Relationship Model (ERD) for optimal data storage and allow for generating reports in this format:

STUDENT_ID FIRST_NAME LAST_NAME PROJECT_ID PROJECT_NAME PROJECT_TASK

Which two statements are true in this scenario?

- A. The ERD must have a 1:M relationship between the STUDENTS and PROJECTS entities.
- B. The ERD must have a M:M relationship between the STUDENTS and PROJECTS entities that must be resolved into 1:M relationships.
- C. STUDENT_ID must be the primary key in the STUDENTS entity and foreign key in the PROJECTS entity.
- D. PROJECT_ID must be the primary key in the PROJECTS entity and foreign key in the STUDENTS entity.
- E. An associative table must be created with a composite key of STUDENT_ID and PROJECT_ID, which is the foreign key linked to the STUDENTS and PROJECTS entities.

Answer: BE

Explanation:

References:

<http://www.oracle.com/technetwork/issue-archive/2011/11-nov/o61sql-512018.html>

NEW QUESTION 21

Examine the structure proposed for the TRANSACTIONS table:

Name	Null?	Type
-----	-----	-----
TRANS_ID	NOT NULL	NUMBER (6)
CUST_NAME	NOT NULL	VARCHAR2 (20)
CUST_STATUS	NOT NULL	VARCHAR2
TRANS_DATE	NOT NULL	DATE
TRANS_VALIDITY		INTERVAL DAY TO SECOND
CUST_CREDIT_VALUE		NUMBER (10)

Which two statements are true regarding the storage of data in the above table structure? (Choose two.)

- A. The CUST_CREDIT_VALUE column would allow storage of positive and negative integers.
- B. The TRANS_VALIDITY column would allow storage of a time interval in days, hours, minutes, and seconds.
- C. The CUST_STATUS column would allow storage of data up to the maximum VARCHAR2 size of 4,000 characters.
- D. The TRANS_DATE column would allow storage of dates only in the dd-mon-yyyy format.

Answer: AB

NEW QUESTION 25

Evaluate the following statement. INSERT ALL

WHEN order_total < 10000 THEN INTO small_orders

WHEN order_total > 10000 AND order_total < 20000 THEN INTO medium_orders

WHEN order_total > 200000 AND order_total < 20000 THEN INTO large_orders

SELECT order_id, order_total, customer_id FROM orders;

Which statement is true regarding the evaluation of rows returned by the subquery in the INSERT statement?

- A. They are evaluated by all the three WHEN clauses regardless of the results of the evaluation of any other WHEN clause.
- B. They are evaluated by the first WHEN clause
- C. If the condition is true, then the row would be evaluated by the subsequent WHEN clauses.
- D. They are evaluated by the first WHEN clause
- E. If the condition is false, then the row would be evaluated by the subsequent WHEN clauses.
- F. The insert statement would give an error because the ELSE clause is not present for support in case none of WHEN clauses are true.

Answer: A

Explanation:

References:

http://psoug.org/definition/WHEN.htm

NEW QUESTION 30

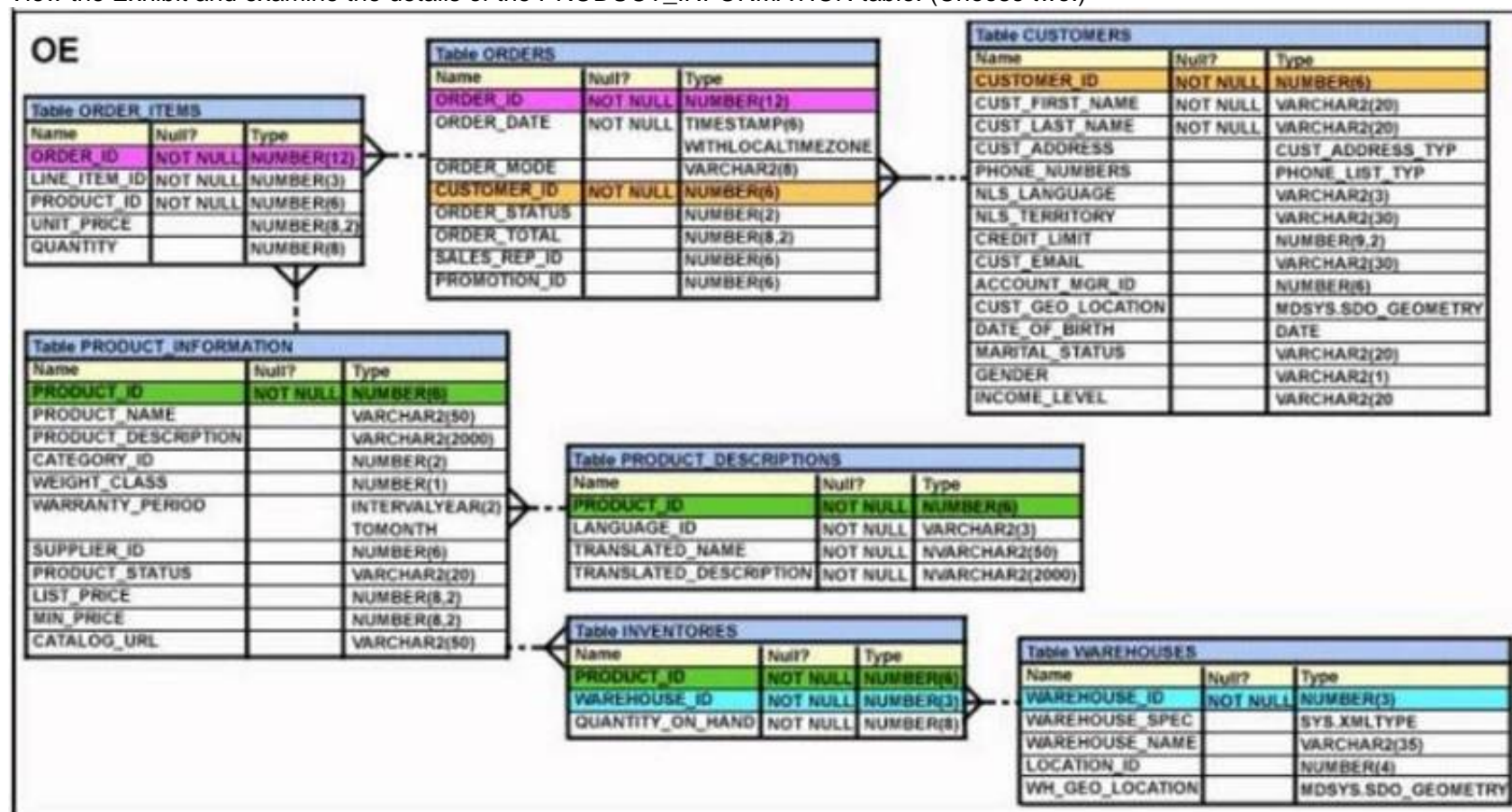
When does a transaction complete? (Choose all that apply.)

- A. When a PL/SQL anonymous block is executed
- B. When a DELETE statement is executed
- C. When a data definition language statement is executed
- D. When a TRUNCATE statement is executed after the pending transaction
- E. When a ROLLBACK command is executed

Answer: CDE

NEW QUESTION 34

View the Exhibit and examine the details of the PRODUCT_INFORMATION table. (Choose two.)



Evaluate this SQL statement:

SELECT TO_CHAR(list_price, '\$9,999') FROM product_information;

Which two statements are true regarding the output?

- A. A row whose LIST_PRICE column contains value 11235.90 would be displayed as #####.
- B. A row whose LIST_PRICE column contains value 1123.90 would be displayed as \$1,123.
- C. A row whose LIST_PRICE column contains value 1123.90 would be displayed as \$1,124.
- D. A row whose LIST_PRICE column contains value 11235.90 would be displayed as \$1,123.

Answer: AC

NEW QUESTION 39

View the exhibit and examine the descriptions of the DEPT and LOCATIONS tables.

DEPT		
Name	Null?	Type
DEPARTMENT_ID		NUMBER(4)
DEPARTMENT_NAME	NOT NULL	VARCHAR2(30)
MANAGER_ID		NUMBER(6)
LOCATION_ID		NUMBER(4)
CITY		VARCHAR2(30)

LOCATIONS		
Name	Null?	Type
LOCATION_ID	NOT NULL	NUMBER(4)
STREET_ADDRESS		VARCHAR2(40)
POSTAL_CODE		VARCHAR2(12)
CITY	NOT NULL	VARCHAR2(30)
STATE_PROVINCE		VARCHAR2(25)
COUNTRY_ID		CHAR(2)

You want to update the CITY column of the DEPT table for all the rows with the corresponding value in the CITY column of the LOCATIONS table for each department.

Which SQL statement would you execute to accomplish the task?

- A. UPDATE dept d SET city = ALL (SELECT city FROM locations l WHERE d.location_id = l.location_id);
- B. UPDATE dept d SET city = (SELECT city FROM locations l) WHERE d.location_id = l.location_id;
- C. UPDATE dept d SET city = ANY (SELECT city FROM locations l)
- D. UPDATE dept d SET city = (SELECT city FROM locations l WHERE d.location_id = l.location_id);

Answer: D

NEW QUESTION 42

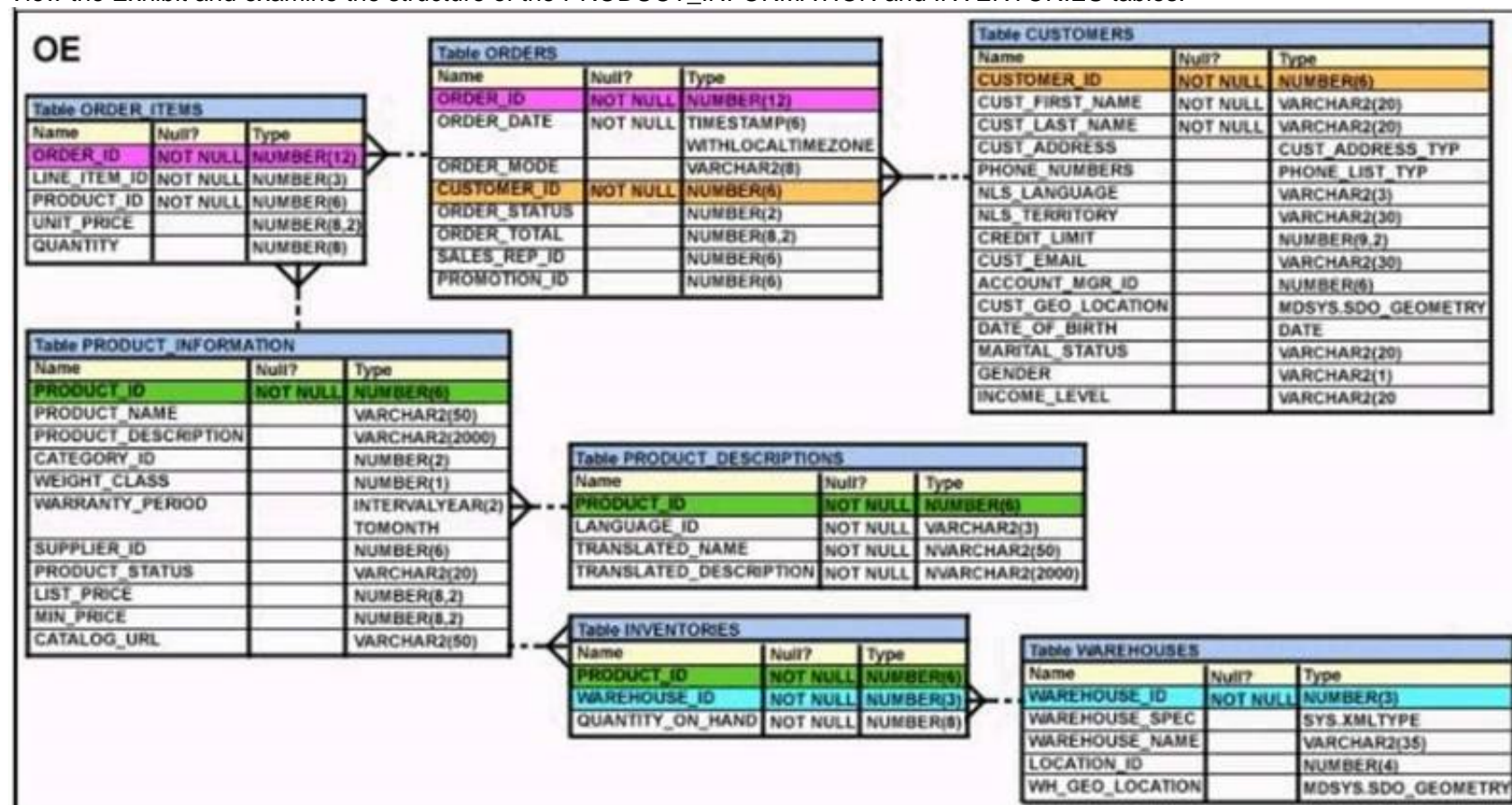
Which task can be performed by using a single Data Manipulation Language (DML) statement?

- A. adding a column constraint when inserting a row into a table
- B. adding a column with a default value when inserting a row into a table
- C. removing all data only from one single column on which a unique constraint is defined
- D. removing all data only from one single column on which a primary key constraint is defined

Answer: C

NEW QUESTION 45

View the Exhibit and examine the structure of the PRODUCT_INFORMATION and INVENTORIES tables.



You have a requirement from the supplies department to give a list containing PRODUCT_ID, SUPPLIER_ID, and QUANTITY_ON_HAND for all the products wherein QUANTITY_ON_HAND is less than five.

Which two SQL statements can accomplish the task? (Choose two.)

- A. SELECT i.product_id, i.quantity_on_hand, pi.supplier_id FROM product_information pi JOIN inventories i ON (pi.product_id=i.product_id) WHERE quantity_on_hand < 5;
- B. SELECT product_id, quantity_on_hand, supplier_id FROM product_information NATURAL JOIN inventories AND quantity_on_hand < 5;
- C. SELECT i.product_id, i.quantity_on_hand, pi.supplier_id FROM product_information pi JOIN inventories i ON (pi.product_id=i.product_id) AND quantity_on_hand < 5;
- D. SELECT i.product_id, i.quantity_on_hand, pi.supplier_id FROM product_information pi JOIN inventories i ON (pi.product_id=i.product_id) USING (product_id) AND quantity_on_hand < 5;

Answer: AC

NEW QUESTION 46

Which two are the minimal requirements for a self-join? (Choose two.)

- A. Only equijoin conditions may be used in the query.
- B. Outer joins must not be used in the query.
- C. There must be a condition on which the self-join is performed.
- D. No other condition except the self-join may be specified.
- E. The table used for the self-join must have two different alias names in the query.

Answer: CE

NEW QUESTION 49

You need to produce a report where each customer's credit limit has been incremented by \$1000. In the output, the customer's last name should have the heading Name and the incremented credit limit should be labeled New Credit Limit. The column headings should have only the first letter of each word in uppercase.

Which statement would accomplish this requirement?

- A. SELECT cust_last_name AS "Name", cust_credit_limit + 1000 AS "New Credit Limit" FROM customers;
- B. SELECT cust_last_name AS Name, cust_credit_limit + 1000 AS New Credit Limit FROM customers;
- C. SELECT cust_last_name AS Name, cust_credit_limit + 1000 "New Credit Limit" FROM customers;
- D. SELECT INITCAP (cust_last_name) "Name", cust_credit_limit + 1000 INITCAP ("NEW CREDIT LIMIT") FROM customers;

Answer: A

NEW QUESTION 53

Examine the structure of the MEMBERS table. Name Null? Type

----- MEMBER_ID NOT NULL VARCHAR2 (6)

FIRST_NAME VARCHAR2 (50)

LAST_NAME NOT NULL VARCHAR2 (50)

ADDRESS VARCHAR2 (50)

CITY VARCHAR2 (25)

STATE NOT NULL VARCHAR2 (3)

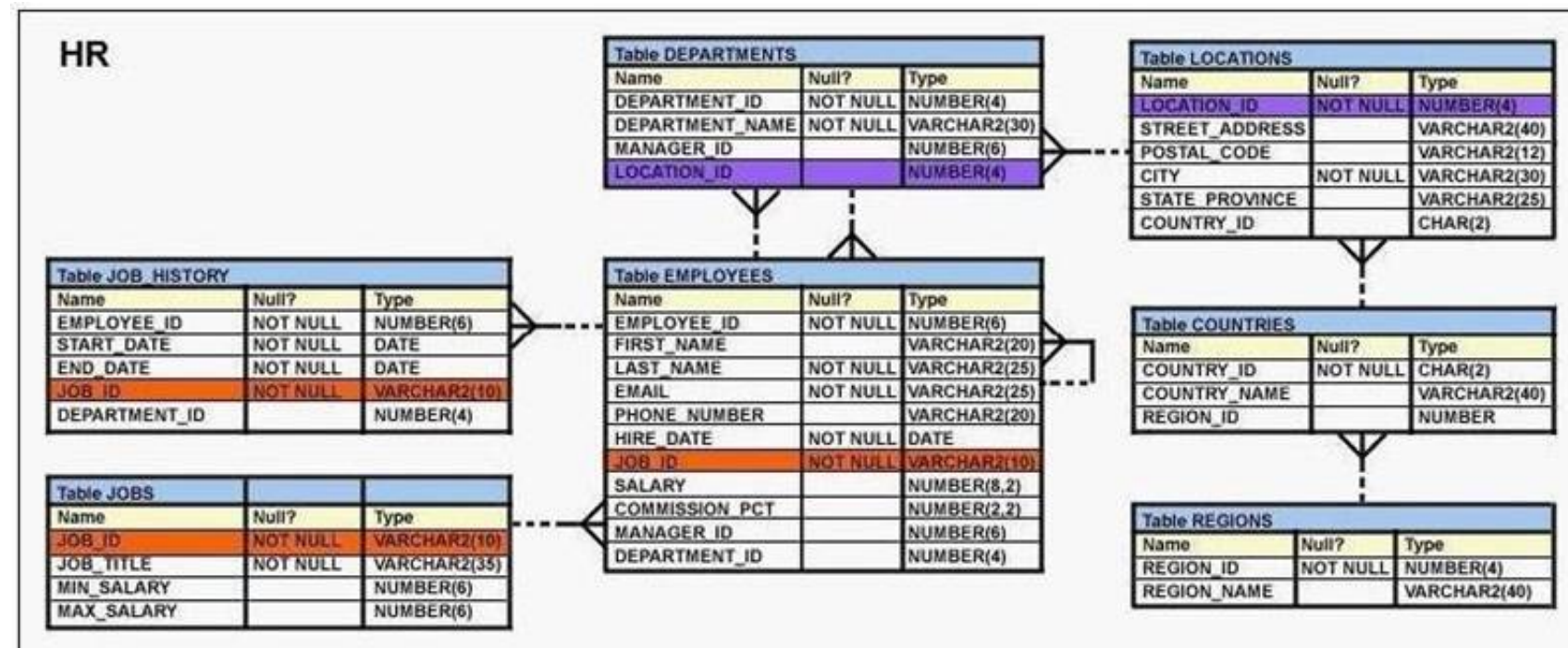
Which query can be used to display the last names and city names only for members from the states MO and MI?

- A. SELECT last_name, city FROM members WHERE state = 'MO' AND state = 'MI';
- B. SELECT last_name, city FROM members WHERE state LIKE 'M%';
- C. SELECT last_name, city FROM members WHERE state IN ('MO', 'MI');
- D. SELECT DISTINCT last_name, city FROM members WHERE state = 'MO' OR state = 'MI';

Answer: C

NEW QUESTION 57

View the Exhibit and examine the description of the EMPLOYEES table.



You want to calculate the total remuneration for each employee. Total remuneration is the sum of the annual salary and the percentage commission earned for a year. Only a few employees earn commission.

Which SQL statement would you execute to get the desired output?

- A. SELECT first_name, salary, salary*12+(salary*NVL2 (commission_pct, salary,salary+commission_pct))"Total"FROM EMPLOYEES;
- B. SELECT first_name, salary, salary*12+salary*commission_pct "Total"FROM EMPLOYEES;
- C. SELECT first_name, salary (salary + NVL (commission_pct, 0)*salary)*12 "Total"FROM EMPLOYEES;
- D. SELECT first_name, salary*12 + NVL(salary,0)*commission_pct, "Total"FROM EMPLOYEES;

Answer: A

NEW QUESTION 59

Which two statements are true regarding constraints? (Choose two.)

- A. All constraints can be defined at the column level and at the table level.
- B. A constraint can be disabled even if the constraint column contains data.
- C. A column with the UNIQUE constraint can contain NULLS.
- D. A foreign key column cannot contain NULLS.
- E. A constraint is enforced only for INSERT operations.

Answer: BC

NEW QUESTION 63

You issue the following command to drop the PRODUCTS table: (Choose all that apply.) SQL > DROP TABLE products;

Which three statements are true about the implication of this command?

- A. All data along with the table structure is deleted.
- B. A pending transaction in the session is committed.
- C. All indexes on the table remain but they are invalidated.
- D. All views and synonyms on the table remain but they are invalidated.
- E. All data in the table is deleted but the table structure remains.

Answer: ABD

NEW QUESTION 67

Which two statements are true about Data Manipulation Language (DML) statements?

- A. An INSERT INTO...VALUES.. statement can add multiple rows per execution to a table.
- B. An UPDATE... SET... statement can modify multiple rows based on multiple conditions on a table.
- C. A DELETE FROM..... statement can remove rows based on only a single condition on a table.
- D. An INSERT INTO... VALUES..... statement can add a single row based on multiple conditions on a table.

- E. A DELETE FROM..... statement can remove multiple rows based on multiple conditions on a table.
- F. An UPDATE.....SET..... statement can modify multiple rows based on only a single condition on a table.

Answer: BE

Explanation:

References:
http://www.techonthenet.com/sql/and_or.php

NEW QUESTION 69

In which three situations does a transaction complete?

- A. when a PL/SQL anonymous block is executed
- B. when a DELETE statement is executed
- C. when a ROLLBACK command is executed
- D. when a data definition language (DDL) statement is executed
- E. when a TRUNCATE statement is executed after the pending transaction

Answer: CDE

Explanation:

References:
https://docs.oracle.com/cd/B19306_01/server.102/b14220/transact.htm

NEW QUESTION 70

Which two statements are true about sequences created in a single instance Oracle database?

- A. The numbers generated by an explicitly defined sequence can only be used to insert data in one table.
- B. DELETE <sequencename> would remove a sequence from the database.
- C. CURRVAL is used to refer to the most recent sequence number that has been generated for a particular sequence.
- D. When the MAXVALUE limit for a sequence is reached, it can be increased by using the ALTER SEQUENCE statement.
- E. When the database instance shuts down abnormally, sequence numbers that have been cached but not used are available again when the instance is restarted.

Answer: CD

NEW QUESTION 71

Which statement is true about an inner join specified in the WHERE clause of a query?

- A. It must have primary-key and foreign-key constraints defined on the columns used in the join condition.
- B. It requires the column names to be the same in all tables used for the join conditions.
- C. It is applicable for equijoin and nonequijoin conditions.
- D. It is applicable for only equijoin conditions.

Answer: C

NEW QUESTION 76

The first DROP operation is performed on PRODUCTS table using the following command: DROP TABLE products PURGE;
Then you performed the FLASHBACK operation by using the following command: FLASHBACK TABLE products TO BEFORE DROP;
Which statement describes the outcome of the FLASHBACK command?

- A. It recovers only the table structure.
- B. It recovers the table structure, data, and the indexes.
- C. It recovers the table structure and data but not the related indexes.
- D. It is not possible to recover the table structure, data, or the related indexes.

Answer: D

Explanation:

References:
https://docs.oracle.com/cd/B19306_01/server.102/b14200/statements_9003.htm

NEW QUESTION 78

Examine the structure of the EMPLOYEES table. (Choose two.)

Name	Null?	Type
EMPLOYEE_ID	NOT NULL	NUMBER (6)
FIRST_NAME		VARCHAR2 (20)
LAST_NAME	NOT NULL	VARCHAR2 (25)
EMAIL	NOT NULL	VARCHAR2 (25)
PHONE_NUMBER		VARCHAR2 (20)
HIRE_DATE	NOT NULL	DATE
JOB_ID	NOT NULL	VARCHAR2 (10)
SALARY		NUMBER (8, 2)
COMMISSION_PCT		NUMBER (2, 2)
MANAGER_ID		NUMBER (6)
DEPARTMENT_ID		NUMBER (4)

You must display the maximum and minimum salaries of employees hired 1 year ago. Which two statements would provide the correct output?

- A. SELECT MIN(Salary) minsal, MAX(salary) maxsalFROM employeesWHERE hire_date < SYSDATE-365GROUP BY MIN(salary), MAX(salary);
- B. SELECT minsal, maxsalFROM (SELECT MIN(salary) minsal, MAX(salary) maxsal FROM employeesWHERE hire_date < SYSDATE-365)GROUP BY maxsal, minsal;
- C. SELECT minsal, maxsalFROM (SELECT MIN(salary) minsal, MAX(salary) maxsal FROM employeesWHERE hire_date < SYSDATE-365GROUP BY MIN(salary), MAX(salary);
- D. SELECT MIN(Salary), MAX(salary)FROM (SELECT salary FROM employeesWHERE hire_date < SYSDATE-365);

Answer: BD

NEW QUESTION 79

View the Exhibit and examine the data in the PRODUCT_INFORMATION table.

PRODUCT_INFORMATION				
PDT_ID	SUP_ID	PDT_STATUS	LIST_PRICE	MIN_PRICE
1797	102094	orderable	349	288
2254	102071	obsolete	453	371
2382	102050	under development	850	731
2459	102099	under development	699	568
3127	102087	orderable	498	444
3353	102071	obsolete	489	413
3354	102066	orderable	543	478

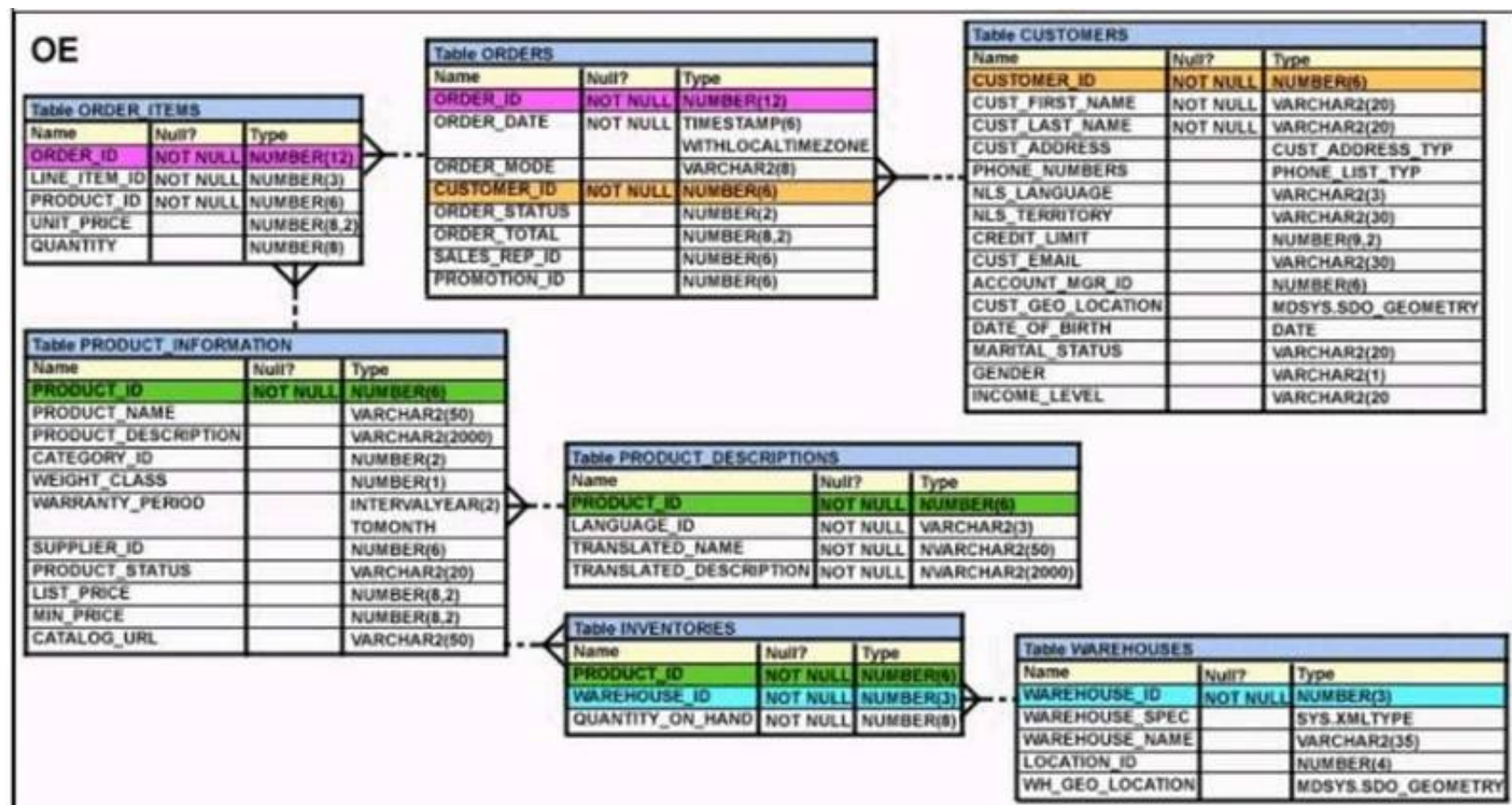
Which two tasks would require subqueries? (Choose two.)

- A. displaying all the products whose minimum list prices are more than average list price of products having the status orderable
- B. displaying the total number of products supplied by supplier 102071 and having product status OBSOLETE
- C. displaying the number of products whose list prices are more than the average list price
- D. displaying all supplier IDs whose average list price is more than 500
- E. displaying the minimum list price for each product status

Answer: AC

NEW QUESTION 81

View the Exhibit and examine the description of the ORDERS table. (Choose two.)



Which two WHERE clause conditions demonstrate the correct usage of conversion functions?

- A. WHERE Order_date IN (TO_DATE('OCT 21 2003', 'MON DD YYYY'), TO_CHAR('NOV 21 2003', 'MON DD YYYY'))
- B. WHERE Order_date > TO_CHAR(ADD_MONTHS(SYSDATE, 6), 'MON DD YYYY')
- C. WHERE TO_CHAR(Order_date, 'MON DD YYYY') = 'JAN 20 2003'
- D. WHERE Order_date > (TO_DATE('JUL 10 2006', 'MON DD YYYY')

Answer: CD

NEW QUESTION 84

Which statement is true regarding external tables?

- A. The CREATE TABLE AS SELECT statement can be used to upload data into regular table in the database from an external table.
- B. The data and metadata for an external table are stored outside the database.
- C. The default REJECT LIMIT for external tables is UNLIMITED.
- D. ORACLE_LOADER and ORACLE_DATAPUMP have exactly the same functionality when used with an external table.

Answer: A

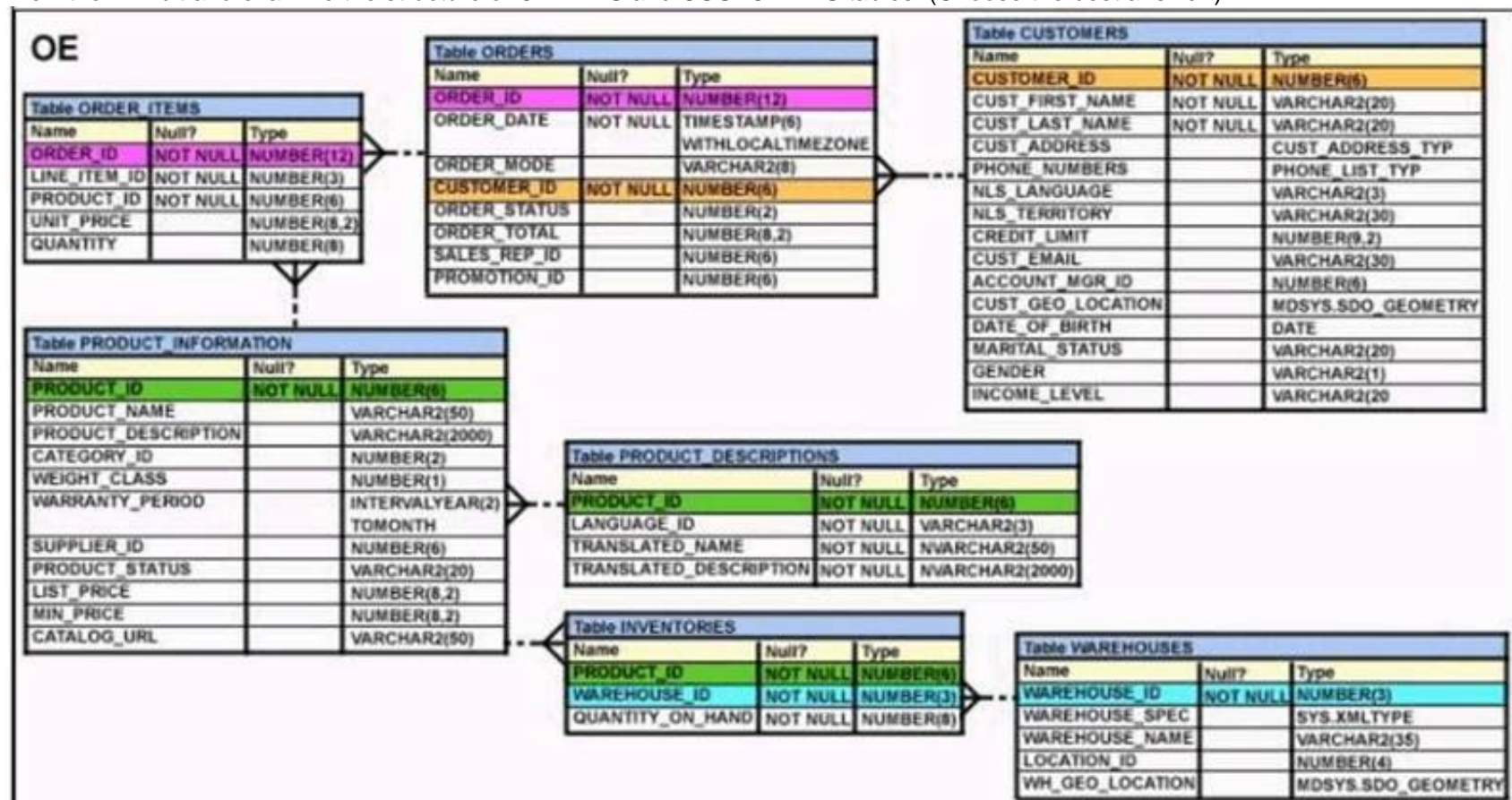
Explanation:

References:

https://docs.oracle.com/cd/B28359_01/server.111/b28310/tables013.htm

NEW QUESTION 85

View the Exhibit and examine the structure of ORDERS and CUSTOMERS tables. (Choose the best answer.)



You executed this UPDATE statement: UPDATE

(SELECT order_date, order_total, customer_id FROM orders) Set order_date = '22-mar-2007'

WHERE customer_id IN

(SELECT customer_id FROM customers

WHERE cust_last_name = 'Roberts' AND credit_limit = 600); Which statement is true regarding the execution?

- A. It would not execute because a subquery cannot be used in the WHERE clause of an UPDATE statement.
- B. It would not execute because two tables cannot be referenced in a single UPDATE statement.
- C. It would execute and restrict modifications to the columns specified in the SELECT statement.
- D. It would not execute because a SELECT statement cannot be used in place of a table name.

Answer: C

NEW QUESTION 86

Which two statements are true regarding working with dates? (Choose two.)

- A. The RR date format automatically calculates the century from the SYSDATE function but allows the session user to enter the century.
- B. The RR date format automatically calculates the century from the SYSDATE function and does not allow a session user to enter the century.
- C. The default internal storage of dates is in character format.
- D. The default internal storage of dates is in numeric format.

Answer: AD

NEW QUESTION 87

Examine the structure of the MEMBERS table: NameNull?Type

----- MEMBER_IDNOT NULLVARCHAR2 (6)

FIRST_NAMEVARCHAR2 (50)

LAST_NAMENOT NULLVARCHAR2 (50)

ADDRESSVARCHAR2 (50)

You execute the SQL statement:

SQL > SELECT member_id, ' ', first_name, ' ', last_name "ID FIRSTNAME LASTNAME " FROM members;

What is the outcome?

- A. It fails because the alias name specified after the column names is invalid.
- B. It fails because the space specified in single quotation marks after the first two column names is invalid.
- C. It executes successfully and displays the column details in a single column with only the alias column heading.
- D. It executes successfully and displays the column details in three separate columns and replaces only the last column heading with the alias.

Answer: D

NEW QUESTION 91

Examine the structure of the PROGRAMS table:

Name	Null?	Type
-----	-----	-----
PROG_ID	NOT NULL	NUMBER (3)
PROG_COST		NUMBER (8, 2)
START_DATE	NOT NULL	DATE
END_DATE		DATE

Which two SQL statements would execute successfully?

- A. SELECT NVL (ADD_MONTHS (END_DATE,1) SYSDATE) FROM programs;
- B. SELECT TO_DATE (NVL (SYSDATE-END_DATE, SYSDATE)) FROM programs;
- C. SELECT NVL (MONTHS_BETWEEN (start_date, end_date), 'Ongoing') FROM programs;
- D. SELECT NVL (TO_CHAR (MONTHS_BETWEEN (start-date, end_date)), 'Ongoing') FROMprograms

Answer: AD

NEW QUESTION 92

Which two statements are true regarding the execution of the correlated subqueries? (Choose two.)

- A. The nested query executes after the outer query returns the row.
- B. The nested query executes first and then the outer query executes.
- C. The outer query executes only once for the result returned by the inner query.
- D. Each row returned by the outer query is evaluated for the results returned by the inner query.

Answer: AD

NEW QUESTION 94

.....

THANKS FOR TRYING THE DEMO OF OUR PRODUCT

Visit Our Site to Purchase the Full Set of Actual 1Z0-071 Exam Questions With Answers.

We Also Provide Practice Exam Software That Simulates Real Exam Environment And Has Many Self-Assessment Features. Order the 1Z0-071 Product From:

<https://www.2passeasy.com/dumps/1Z0-071/>

Money Back Guarantee

1Z0-071 Practice Exam Features:

- * 1Z0-071 Questions and Answers Updated Frequently
- * 1Z0-071 Practice Questions Verified by Expert Senior Certified Staff
- * 1Z0-071 Most Realistic Questions that Guarantee you a Pass on Your FirstTry
- * 1Z0-071 Practice Test Questions in Multiple Choice Formats and Updatesfor 1 Year